

---

**IMPORTANT**  
Keep manual  
on file at all  
times.

**stryker<sup>®</sup>**  
**Medical**



**Model 6080-202**

---

**▲RUGGED<sup>™</sup> Ambulance Cot**

---

**WHEEL BRAKE RETROFIT INSTRUCTION MANUAL**

**For Parts or Technical Assistance**  
**1-800-327-0770**

---

# Table of Contents

---

Introduction ..... 2

Safety Precautions ..... 3, 4

Warranty

    Obtaining Parts and Service ..... 5

    Supplemental Warranty Coverage ..... 5

    Return Authorization ..... 6

    Freight Damage Claims ..... 6

Mounting Instructions ..... 7, 8

Operation ..... 9

Wheel Brake Assembly and Parts List ..... 10

Cleaning ..... 11

Preventive Maintenance Checklist ..... 12

# Introduction

---

## INTRODUCTION

This manual is designed to provide instructions for the installation, usage and maintenance of the Stryker Rugged™ Cot wheel brake.

## WARNING / CAUTION / NOTE DEFINITION

The words WARNING, CAUTION and NOTE carry special meanings and should be carefully reviewed.

---

### WARNING

The personal safety of the patient or user may be involved. Disregarding this information could result in injury to the patient or user.

---

---

### CAUTION

These instructions point out special procedures or precautions that must be followed to avoid damaging the equipment.

---

### NOTE

This provides special information to make maintenance easier or important instructions clearer.

# Summary of Safety Precautions

---

The following is a list of safety precautions that must be observed when operating or servicing this unit. Carefully read this list before using or servicing the unit.

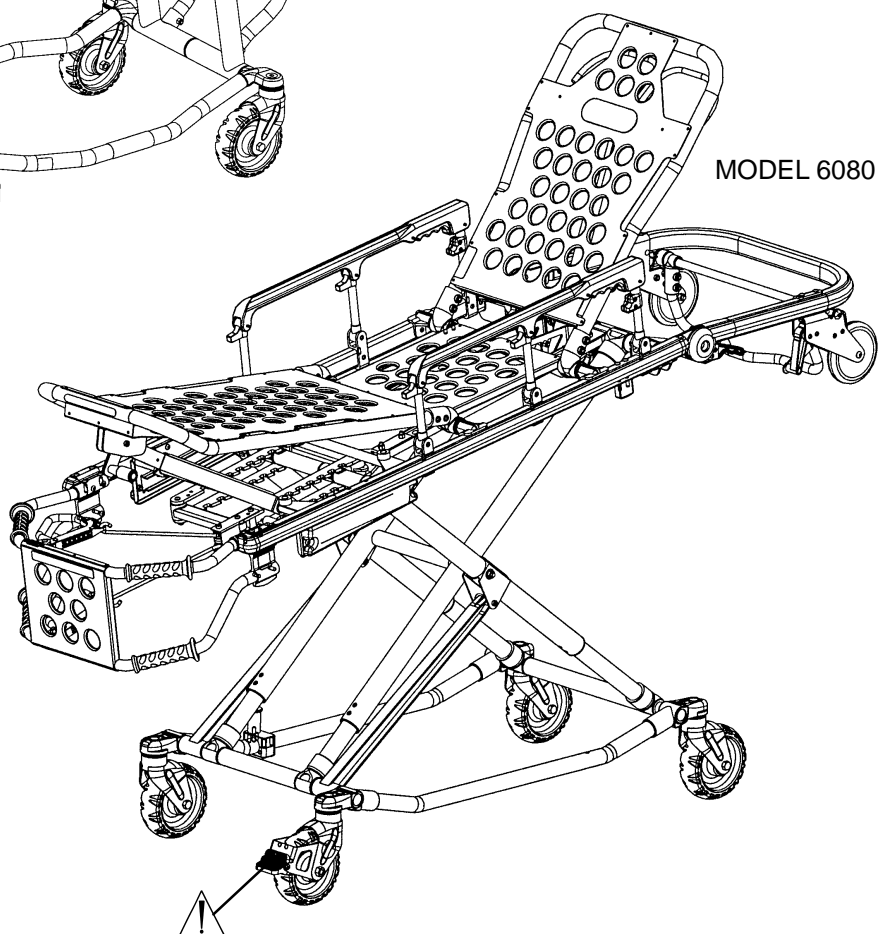
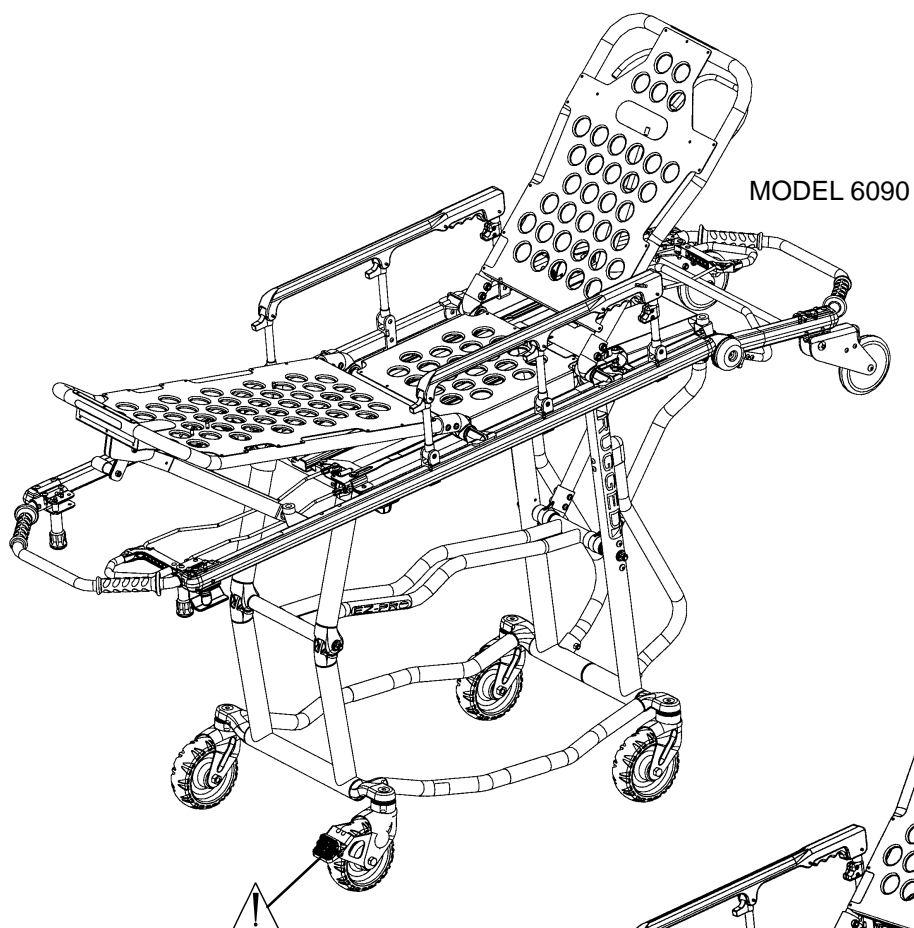
---

## WARNING

- Improper usage of the **▲RUGGED▲** Cot can cause injury to the patient or operator. Operate the cot only as described in this manual.
  - Always use all restraint straps to secure the patient on the cot. An unrestrained patient may fall from the cot and be injured.
  - Never leave a patient unattended on the cot or injury could result. Hold the cot securely while a patient is on the cot.
  - Never install the wheel brake on a cot with excessively worn wheels. Installing the brake on a wheel with less than a 6" diameter could compromise the holding ability of the brake.
  - Never apply the optional wheel brake while a patient is on the cot. Tipping could occur if the cot is moved while the brake is applied, resulting in injury to the patient or operator and/or damage to the cot.
  - The wheel brake is only intended to help prevent the cot from rolling while unattended. The brake may not provide sufficient resistance on all surfaces or under loads.
  - Be sure the undercarriage has engaged and locked before removing the loading wheels from the patient compartment floor of the vehicle. An unlocked undercarriage will not support the cot and injury to the patient and/or operator could result.
  - Loading, unloading and changing the position of the cot requires a minimum of two trained operators working together. The operator(s) must be able to lift the total weight of the patient, cot and any other items on the cot.
  - Do not allow untrained helpers to assist in the operation of the cot. Untrained technicians/helpers can cause injury to the patient or themselves.
  - Grasping the **▲RUGGED▲** Cot improperly can cause injury or damage to the cot. Grasp only the lifting bars to lift the cot. Keep hands/fingers away from moving parts.
  - Do not modify the **▲RUGGED▲** Cot. Modifying the cot can cause unpredictable operation resulting in injury to the patient or operator. Modifying the cot will also void its warranty.
  - Improper maintenance can cause injury or damage to the unit. Maintain the cot as described in this manual. Use only Stryker approved parts and maintenance procedures. Using unapproved parts and procedures could cause unpredictable operation and/or injury and will void the product warranty.
  - Do not step or ride on the base of the **▲RUGGED▲** cot. Damage to the cot could occur, resulting in injury to the patient or operator.
  - Failure to properly clean or dispose of contaminated mattress or cot components will increase the risk of exposure to bloodborne pathogens and may cause injury to the patient or the operator.
-

# Summary of Safety Precautions

---



Never apply the optional wheel brake while a patient is on the cot. Tipping could occur if the cot is moved while the brake is applied, resulting in injury to the patient or operator and/or damage to the cot.

# Warranty

---

## Limited Warranty:

Stryker Medical Division, a division of Stryker Corporation, warrants to the original purchaser that its products should be free from defects in material and workmanship for a period of one (1) year after date of delivery. Stryker's obligation under this warranty is expressly limited to supplying replacement parts and labor for, or replacing, at its option, any product which is, in the sole discretion of Stryker, found to be defective. Stryker warrants to the original purchaser that the frame and welds on its beds will be free from structural defects for as long as the original purchaser owns the bed. If requested by Stryker, products or parts for which a warranty claim is made shall be returned prepaid to Stryker's factory. Any improper use or any alteration or repair by others in such manner as in Stryker's judgement affects the product materially and adversely shall void this warranty. No employee or representative of Stryker is authorized to change this warranty in any way.

This statement constitutes Stryker's entire warranty with respect to the aforesaid equipment. STRYKER MAKES NO OTHER WARRANTY OR REPRESENTATION, EITHER EXPRESSED OR IMPLIED, EXCEPT AS SET FORTH HEREIN. THERE IS NO WARRANTY OF MERCHANTABILITY AND THERE ARE NO WARRANTIES OF FITNESS FOR ANY PARTICULAR PURPOSE. IN NO EVENT SHALL STRYKER BE LIABLE HEREUNDER FOR INCIDENTAL OR CONSEQUENTIAL DAMAGES ARISING FROM OR IN ANY MANNER RELATED TO SALES OR USE OF ANY SUCH EQUIPMENT.

## To Obtain Parts and Service:

Stryker products are supported by a nationwide network of dedicated Stryker Field Service Representatives. These representatives are factory trained, available locally, and carry a substantial spare parts inventory to minimize repair time. Simply call your local representative, or call Stryker Customer Service at (800) 327-0770.

## Supplemental Warranty Coverage:

Stryker has developed a comprehensive program of extended warranty options designed to keep your equipment operating at peak performance at the same time it eliminates unexpected costs. We recommend that these programs be activated *before* the expiration of the new product warranty to eliminate the potential of additional equipment upgrade charges. Stryker offers the following Supplemental Warranties:

### **Extended (Parts and Labor)**

- All replacement parts (excluding mattresses and consumable items)
- Labor and travel for *all* scheduled and unscheduled calls
- Annual Preventive Maintenance Inspections and repairs
- JCAHO paperwork for preventive maintenance
- Priority Emergency Service

### **Standard (Labor Only):**

- Labor and travel for *all* scheduled and unscheduled calls
- Annual Preventive Maintenance Inspections and repairs
- JCAHO paperwork for preventive maintenance
- Priority Emergency Service

### **Basic (Parts Only):**

- All replacement parts (excluding mattresses and consumable items)
- Priority Emergency Service

***Please call your local representative, or call (800) 327-0770 for further information***

# Warranty

---

## **Return Authorization:**

Merchandise cannot be returned without approval from the Stryker Customer Service Department. An authorization number will be provided which must be printed on the returned merchandise. Stryker reserves the right to charge shipping and restocking fees on returned items.

SPECIAL, MODIFIED, OR DISCONTINUED ITEMS NOT SUBJECT TO RETURN.

## **Damaged Merchandise:**

ICC Regulations require that claims for damaged merchandise must be made with the carrier within fifteen (15) days of receipt of merchandise. **DO NOT ACCEPT DAMAGED SHIPMENTS UNLESS SUCH DAMAGE IS NOTED ON THE DELIVERY RECEIPT AT THE TIME OF RECEIPT.** Upon prompt notification, Stryker will file a freight claim with the appropriate carrier for damages incurred. Claim will be limited in amount to the actual replacement cost. In the event that this information is not received by Stryker within the fifteen (15) day period following the delivery of the merchandise, or the damage was not noted on the delivery receipt at the time of receipt, the customer will be responsible for payment of the original invoice in full.

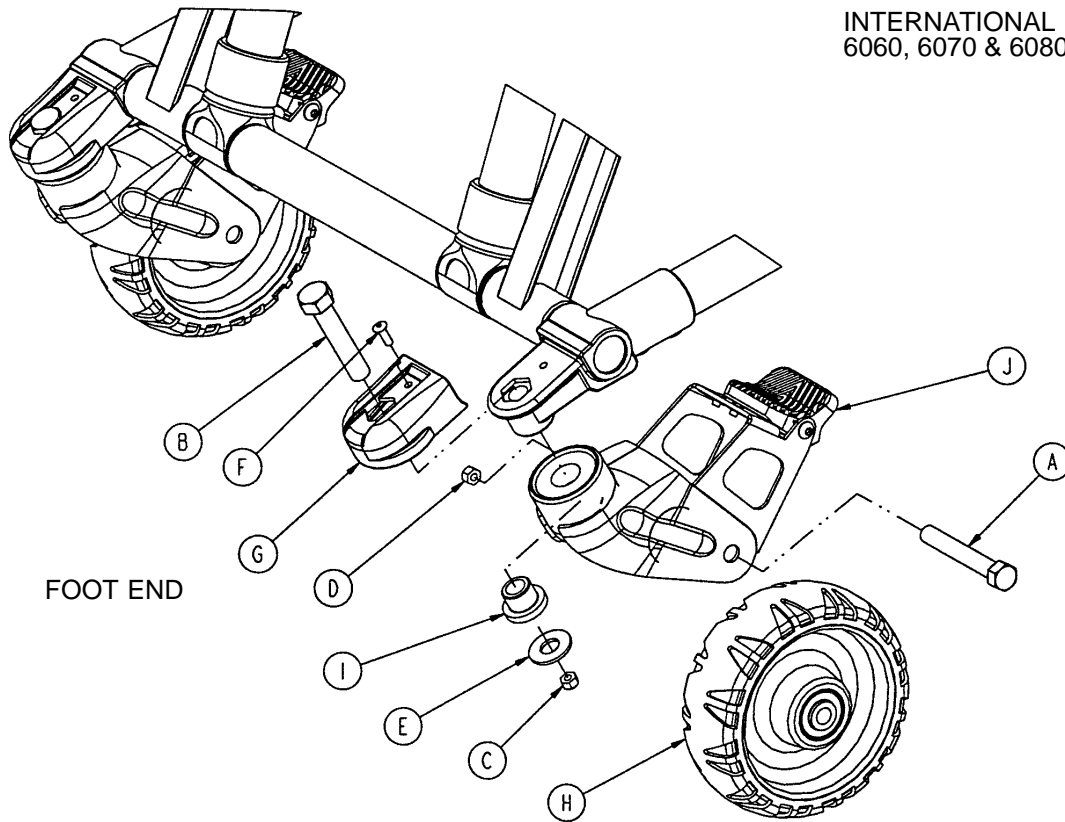
Claims for any short shipment must be made within thirty (30) days of invoice.

## **International Warranty Clause:**

This warranty reflects U.S. domestic policy. Warranty outside the U.S. may vary by country. Please contact your local Stryker Medical representative for additional information.

# Mounting Instructions

INTERNATIONAL  
6060, 6070 & 6080



## Required Tools

Electric Drill  
5/8" Wrench

Pop Rivet Tool  
11/16" Wrench

#8 or 5/16" Drill Bit  
3/4" Wrench

## Mounting Procedure

1. Using a #8 drill bit and electric drill, drill out the pop rivet (F) from the caster mount cover (G) and remove the cover.
2. Using a 5/8" wrench and an 11/16" wrench, remove the axle bolt (A) and nut (D) from the caster wheel and remove the wheel.
3. Using a 3/4" wrench, remove the bolt (B) and nut (C) holding the caster horn to the base frame.
4. Reverse steps 1–3 to install the new brake caster horn.
5. Repeat for the caster wheel on the opposite side of the cot.



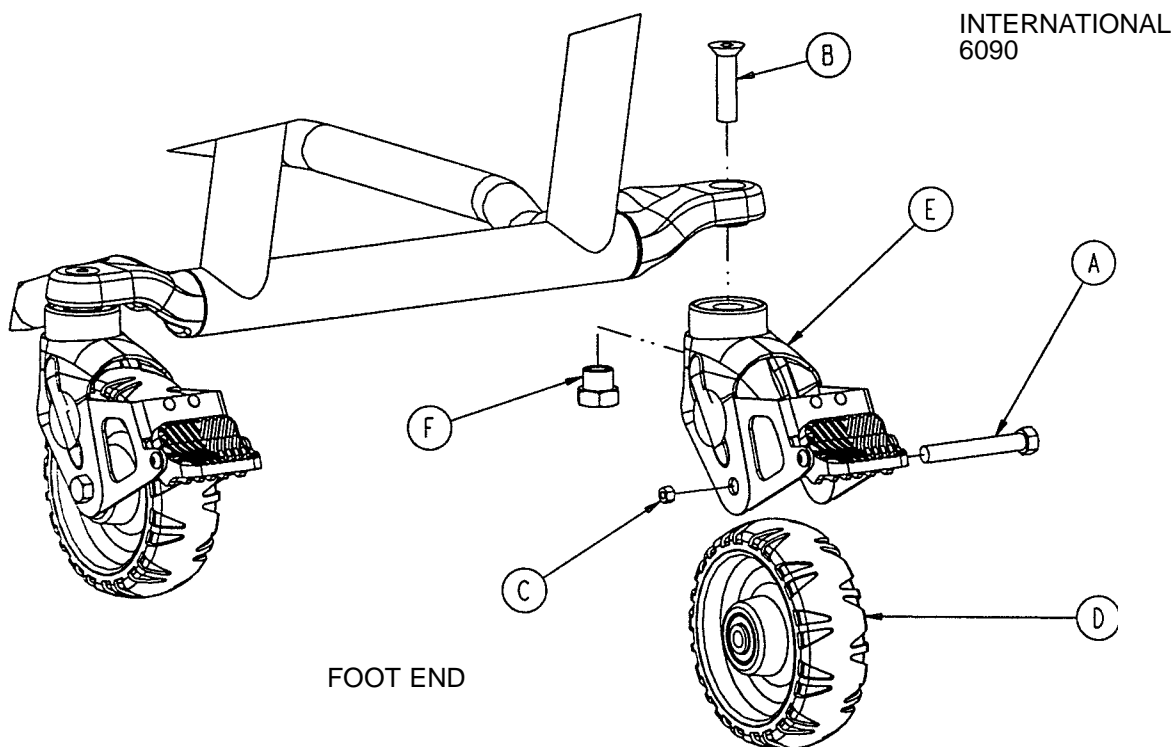
## WARNING

Never install the wheel brake on a cot with excessively worn wheels. Installing the brake on a wheel with less than a 6" diameter could compromise the holding ability of the brake.



# Mounting Instructions

---



## Required Tools

5/8" Wrench

11/16" Wrench

3/4" Wrench

5/16" Hex Allen Wrench

1" Socket and Ratchet

## Mounting Procedure

1. Using a 5/8" wrench and an 11/16" wrench, remove the axle bolt (A) and nut (C) from the caster wheel and remove the wheel.
2. Using a 5/16" hex Allen wrench and 1" socket and ratchet, remove the bolt (B) and nut (F) holding the caster horn to the base frame.
3. Reverse steps 1 and 2 to install the new brake caster horn.
4. Repeat for the caster wheel on the opposite side of the cot.



## WARNING

Never install the wheel brake on a cot with excessively worn wheels. Installing the brake on a wheel with less than a 6" diameter could compromise the holding ability of the brake.

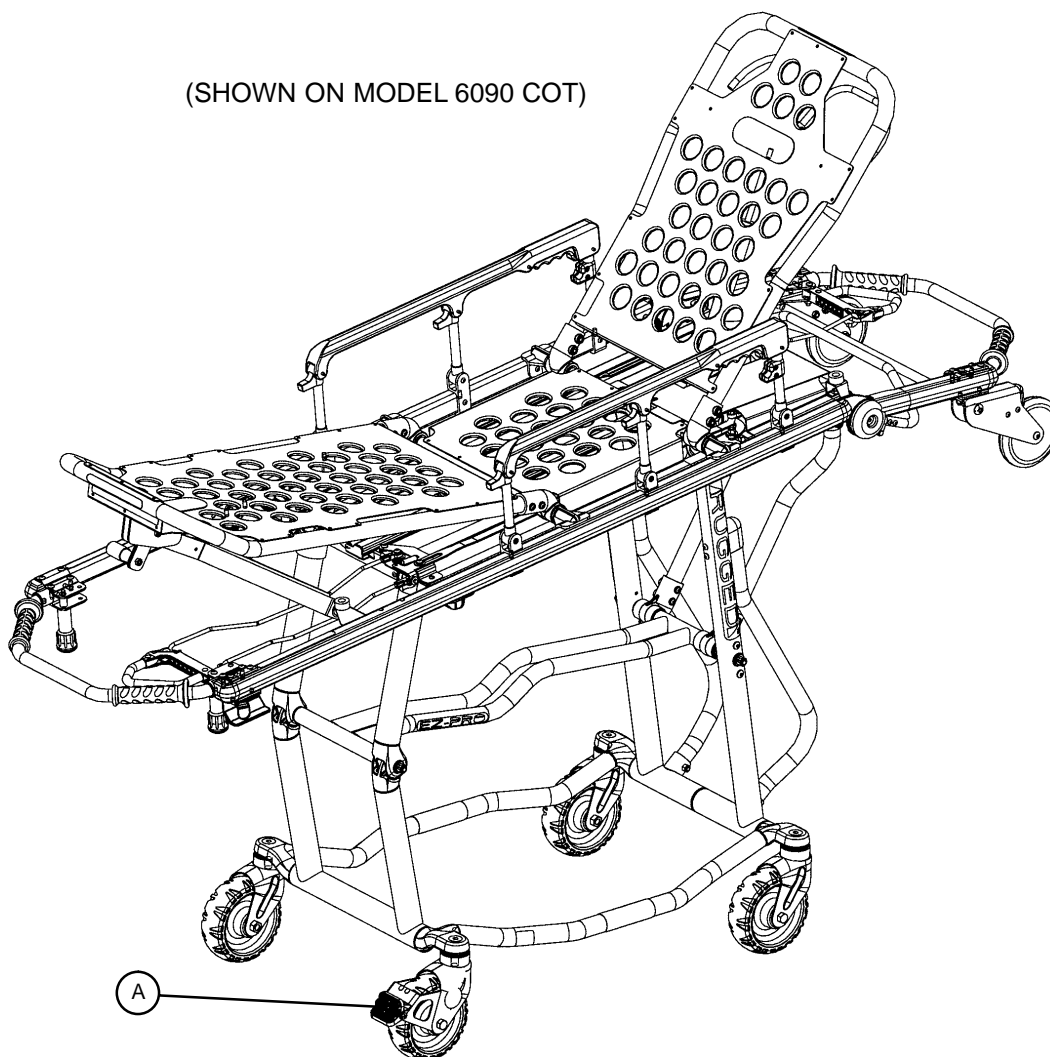
---

# Operation

---

## OPERATING WHEEL BRAKE

(SHOWN ON MODEL 6090 COT)



1. To activate the optional wheel brake, press fully down on the pedal (A) until it stops.
2. To release the optional wheel brake, depress the upper face of the brake pedal with your foot or lift up with your toe under the pedal. The upper portion of the pedal will rest against the caster frame when the wheel brake is released.

---

### WARNING

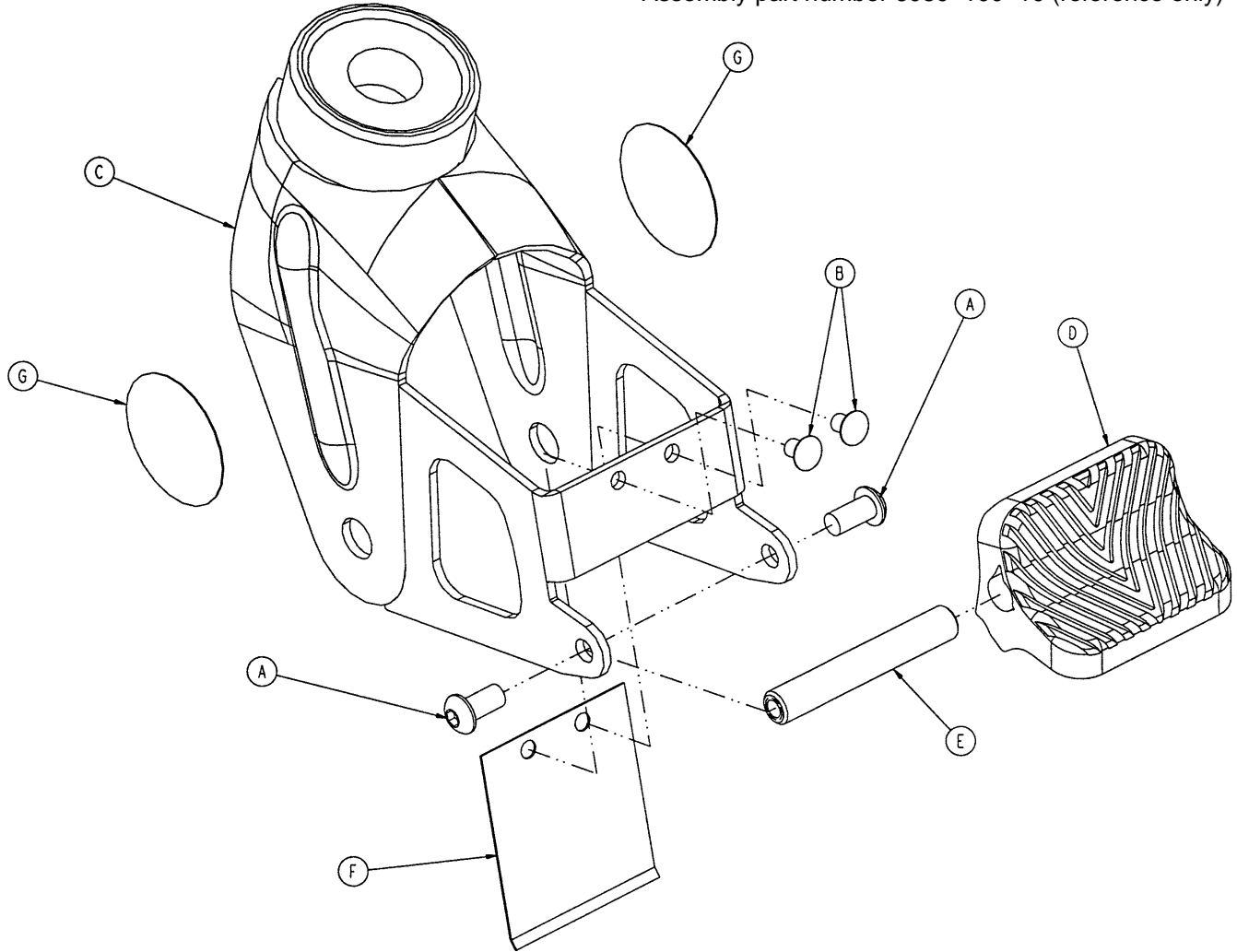
Never apply the optional wheel brake while a patient is on the cot. Tipping could occur if the cot is moved while the brake is applied, resulting in injury to the patient or operator and/or damage to the cot. Never leave a patient unattended on the cot or injury could result. Hold the cot securely while a patient is on the cot.

The wheel brake is only intended to help prevent the cot from rolling while unattended. The brake may not provide sufficient resistance on all surfaces or under loads.

---

# Wheel Brake Assembly

Assembly part number 6080-100-10 (reference only)



Item	Part No.	Part Name	Qty.
A	4-325	Hex Soc. But. Hd. Screw	2
B	25-153	Rivet	2
C	6080-100-12	Brake Caster Horn Ass'y	1
D	6080-100-30	Pedal	1
E	6080-100-31	Sleeve	1
F	6080-100-32	Brake Spring	1
G	6080-90-101	Brake Warning Label	2

# Cleaning

Hand wash all surfaces of the cot with warm water and mild detergent. Dry thoroughly. **DO NOT STEAM CLEAN, PRESSURE WASH, HOSE OFF OR ULTRASONICALLY CLEAN.** Using these methods of cleaning is **not** recommended and may void this product's warranty.

Clean Velcro **AFTER EACH USE**. Saturate Velcro with disinfectant and allow disinfectant to evaporate. (Appropriate disinfectant for nylon Velcro should be determined by the hospital.)

In general, when used in those concentrations recommended by the manufacturer, either phenolic type or quaternary type disinfectants can be used. Iodophor type disinfectants are not recommended for use because staining may result. The following products have been tested and have been found not to have a harmful effect **WHEN USED IN ACCORDANCE WITH MANUFACTURERS RECOMMENDED DILUTION.\***

TRADE NAME	DISINFECTANT TYPE	MANUFACTURER	*MANUFACTURER'S RECOMMENDED DILUTION
A33	Quaternary	Airwick (Professional Products Division)	2 ounces/gallon
A33 (dry)	Quaternary	Airwick (Professional Products Division)	1/2 ounce/gallon
Beaucoup	Phenolic	Huntington Laboratories	1 ounce/gallon
Blue Chip	Quaternary	S.C. Johnson	2 ounces/gallon
Elimstaph	Quaternary	Walter G. Legge	1 ounce/gallon
Franklin Phenomysan F2500	Phenolic	Purex Corporation	1 1/4 ounce/gallon
Franklin Sentinel	Quaternary	Purex Corporation	2 ounces/gallon
Galahad	Phenolic	Puritan Churchill Chemical Company	1 ounce/gallon
Hi-Tor	Quaternary	Huntington Laboratories	1/2 ounce/gallon
LPH	Phenolic	Vestal Laboratories	1/2 ounce/gallon
Matar	Phenolic	Huntington Laboratories	1/2 ounce/gallon
Omega	Quaternary	Airwick (Professional Products Division)	1/2 ounce/gallon
Quanto	Quaternary	Huntington Laboratories	1 ounce/gallon
Sanikleen	Quaternary	West Chemical Products	2 ounces/ gallon
Sanimaster II	Quaternary	Service Master	1 ounce/gallon
Vesphene	Phenolic	Vestal Laboratories	1 1/4 ounce/ gallon

Quaternary Germicidal Disinfectants, used as directed, and/or Chlorine Bleach products, typically 5.25% Sodium Hypochlorite in **dilutions ranging between 1 part bleach to 100 parts water, and 2 parts bleach to 100 parts water are not considered mild detergents. These products are corrosive in nature and may cause damage to your stretcher if used improperly.** If these types of products are used to clean Stryker patient handling equipment, measures must be taken to insure the stretchers are rinsed with clean water and thoroughly dried following cleaning. Failure to properly rinse and dry the stretchers will leave a corrosive residue on the surface of the stretcher, possibly causing premature corrosion of critical components.

## NOTE

Failure to follow the above directions when using these types of cleaners may void this product's warranty.

## REMOVAL OF IODINE COMPOUNDS

1. Use a solution of 1–2 tablespoons Sodium Thiosulfate in a pint of warm water to clean the stained area. Clean as soon as possible after staining occurs. If stains are not immediately removed, allow solution to soak or stand on the surface. Rinse surfaces which have been exposed to the solution in clear water before returning unit to service.

## WARNING

Failure to properly clean or dispose of contaminated mattress or cot components will increase the risk of exposure to bloodborne pathogens and may cause injury to the patient or the operator.

# Preventative Maintenance

Operation	Schedule	Procedure
Cleaning & Disinfecting	Each use.	See page 11.
Inspection	<p>For 1–25 calls per month, inspect cot every 6 months.</p> <p>For 26–200 calls per month, inspect cot every 3 months.</p> <p>For 201+ calls per month, inspect cot monthly.</p>	See below for checklist.

## Parts, Service or Technical Assistance:

Contact Stryker Customer Service at 1–800–327–0770 or

Stryker Medical  
6300 Sprinkle Road  
Kalamazoo, MI 49001  
ATTN: Customer Service

## CHECKLIST

- \_\_\_\_\_ All fasteners secure
- \_\_\_\_\_ All welds intact, not cracked or broken
- \_\_\_\_\_ No bent or broken tubing or sheet metal
- \_\_\_\_\_ No debris in wheels
- \_\_\_\_\_ All wheels secure, rolling and swivelling properly
- \_\_\_\_\_ Optional wheel brake holds wheel securely when on and clears wheel when off
- \_\_\_\_\_ Siderails move and latch properly
- \_\_\_\_\_ Backrest operating properly
- \_\_\_\_\_ Optional accessories intact and operating properly
- \_\_\_\_\_ Height positioning latch functioning properly
- \_\_\_\_\_ Cot secure in each height position
- \_\_\_\_\_ Undercarriage folds properly
- \_\_\_\_\_ Breakaway head section operating properly
- \_\_\_\_\_ Safety bar operating properly
- \_\_\_\_\_ Foot rest operating properly
- \_\_\_\_\_ No rips or cracks in mattress cover
- \_\_\_\_\_ Body restraints intact and working properly

Serial No. \_\_\_\_\_

Completed By: \_\_\_\_\_

Date: \_\_\_\_\_



### **European Representative**

Stryker France  
BP 50040-95946 Roissy Ch. de Gaulle  
Cedex-France

Phone: 33148632290  
Fax: 33148632175

**stryker<sup>®</sup>**  
**Medical**

6300 Sprinkle Road, Kalamazoo, MI 49001-9799

(800) 327-0770



---

DH 4/99 6080-100-91 REV\_\_