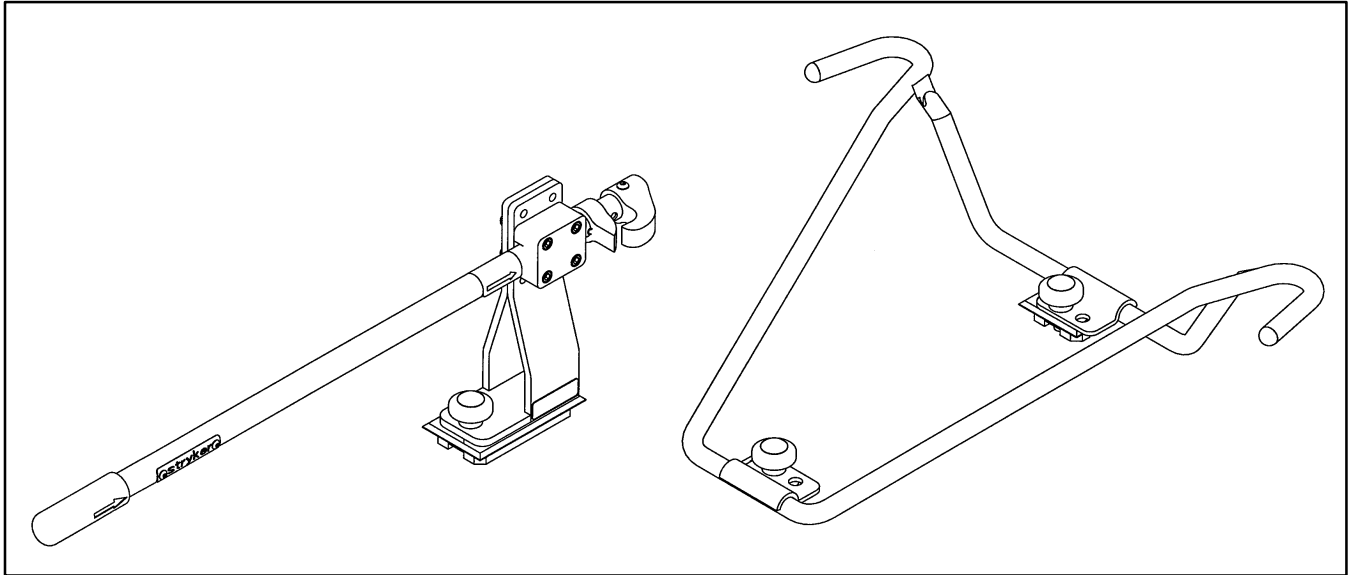


---

**IMPORTANT**  
Keep manual  
on file at all  
times.



# Model 6360/6361

---

**▲RUGGED™** Ambulance Cot Fastener

---

## INSTALLATION/OPERATION INSTRUCTIONS

For Parts or Technical Assistance  
1-800-784-4336

---

# Table of Contents

---

Introduction .....	2
Warning / Caution / Note Definition .....	2
Warranty	
Obtaining Parts and Service .....	3
Supplemental Warranty Coverage .....	3
Return Authorization .....	4
Freight Damage Claims .....	4
Installing Floor Mounted Cot Fastener	
Positioning of the Antler Floor Mounting Plates .....	5, 6
Positioning of the Rail Floor Mounting Plates .....	6
Fastener Attachment .....	7
Installing Wall Mounted Cot Fastener	
Positioning of the Antler Floor Mounting Plates .....	8, 9
Positioning of the Rail Wall Mounting Plate .....	9
Fastener Attachment .....	10
Cot Fastener Operation .....	11, 12
Assembly Drawings and Parts Lists	
Wall Mounted Cot Fastener Assembly .....	13
Floor Mounted Cot Fastener Assembly .....	14

# Introduction

---

## INTRODUCTION

This manual is designed to provide instructions for the installation, usage and maintenance of the Stryker 6360 Floor Mounted Cot Fastener and the 6361 Wall Mounted Cot Fastener. The Stryker 6360 and 6361 cot fasteners are not designed for any purpose other than to restrict movement of an ambulance cot being transported in the patient compartment of an ambulance under normal conditions. Usage of these products in any other way becomes the complete responsibility of the owner/user. An independant test lab has determined that the 6360 and 6361 will hold an ambulance cot secure in the event of an accident as defined in AMD specification 004. Caution must be used at all times during placement of the cot into the ambulance.

## WARNING / CAUTION / NOTE DEFINITION

The words WARNING, CAUTION and NOTE carry special meanings and should be carefully reviewed.

---

### WARNING

The personal safety of the patient or user may be involved. Disregarding this information could result in injury to the patient or user.

---

---

### CAUTION

These instructions point out special procedures or precautions that must be followed to avoid damaging the equipment.

---

### NOTE

This provides special information to make maintenance easier or important instructions clearer.

# Warranty

---

## Limited Warranty:

Stryker Medical Division, a division of Stryker Corporation, warrants to the original purchaser that its products should be free from defects in material and workmanship for a period of one (1) year after date of delivery. Stryker's obligation under this warranty is expressly limited to supplying replacement parts and labor for, or replacing, at its option, any product which is, in the sole discretion of Stryker, found to be defective. Stryker warrants to the original purchaser that the frame and welds on its products will be free from structural defects for as long as the original purchaser owns the product. If requested by Stryker, products or parts for which a warranty claim is made shall be returned prepaid to Stryker's factory. Any improper use or any alteration or repair by others in such manner as in Stryker's judgement affects the product materially and adversely shall void this warranty. No employee or representative of Stryker is authorized to change this warranty in any way.

This statement constitutes Stryker's entire warranty with respect to the aforesaid equipment. STRYKER MAKES NO OTHER WARRANTY OR REPRESENTATION, EITHER EXPRESSED OR IMPLIED, EXCEPT AS SET FORTH HEREIN. THERE IS NO WARRANTY OF MERCHANTABILITY AND THERE ARE NO WARRANTIES OF FITNESS FOR ANY PARTICULAR PURPOSE. IN NO EVENT SHALL STRYKER BE LIABLE HEREUNDER FOR INCIDENTAL OR CONSEQUENTIAL DAMAGES ARISING FROM OR IN ANY MANNER RELATED TO SALES OR USE OF ANY SUCH EQUIPMENT.

## To Obtain Parts and Service:

Stryker products are supported by a nationwide network of dedicated Stryker Field Service Representatives. These representatives are factory trained, available locally, and carry a substantial spare parts inventory to minimize repair time. Simply call your local representative, or call Stryker Customer Service at (800) 327-0770.

## Supplemental Warranty Coverage:

Stryker has developed a comprehensive program of extended warranty options designed to keep your equipment operating at peak performance at the same time it eliminates unexpected costs. We recommend that these programs be activated *before* the expiration of the new product warranty to eliminate the potential of additional equipment upgrade charges. Stryker offers the following Supplemental Warranties:

### **Extended (Parts and Labor)**

- All replacement parts (excluding mattresses and consumable items)
- Labor and travel for *all* scheduled and unscheduled calls
- Biannual Preventive Maintenance Inspections and repairs
- JCAHO paperwork for preventive maintenance
- Priority Emergency Service

### **Standard (Labor Only):**

- Labor and travel for *all* scheduled and unscheduled calls
- Biannual Preventive Maintenance Inspections and repairs
- JCAHO paperwork for preventive maintenance
- Priority Emergency Service

### **Basic (Parts Only):**

- All replacement parts (excluding mattresses and consumable items)
- Priority Emergency Service

***Please call your local representative, or call (800) 327-0770 for further information***

# Warranty

---

## **Return Authorization:**

Merchandise cannot be returned without approval from the Stryker Customer Service Department. An authorization number will be provided which must be printed on the returned merchandise. Stryker reserves the right to charge shipping and restocking fees on returned items.

SPECIAL, MODIFIED, OR DISCONTINUED ITEMS NOT SUBJECT TO RETURN.

## **Damaged Merchandise:**

ICC Regulations require that claims for damaged merchandise must be made with the carrier within fifteen (15) days of receipt of merchandise. **DO NOT ACCEPT DAMAGED SHIPMENTS UNLESS SUCH DAMAGE IS NOTED ON THE DELIVERY RECEIPT AT THE TIME OF RECEIPT.** Upon prompt notification, Stryker will file a freight claim with the appropriate carrier for damages incurred. Claim will be limited in amount to the actual replacement cost. In the event that this information is not received by Stryker within the fifteen (15) day period following the delivery of the merchandise, or the damage was not noted on the delivery receipt at the time of receipt, the customer will be responsible for payment of the original invoice in full.

Claims for any short shipment must be made within thirty (30) days of invoice.

# Installing Floor Mounted Cot Fastener

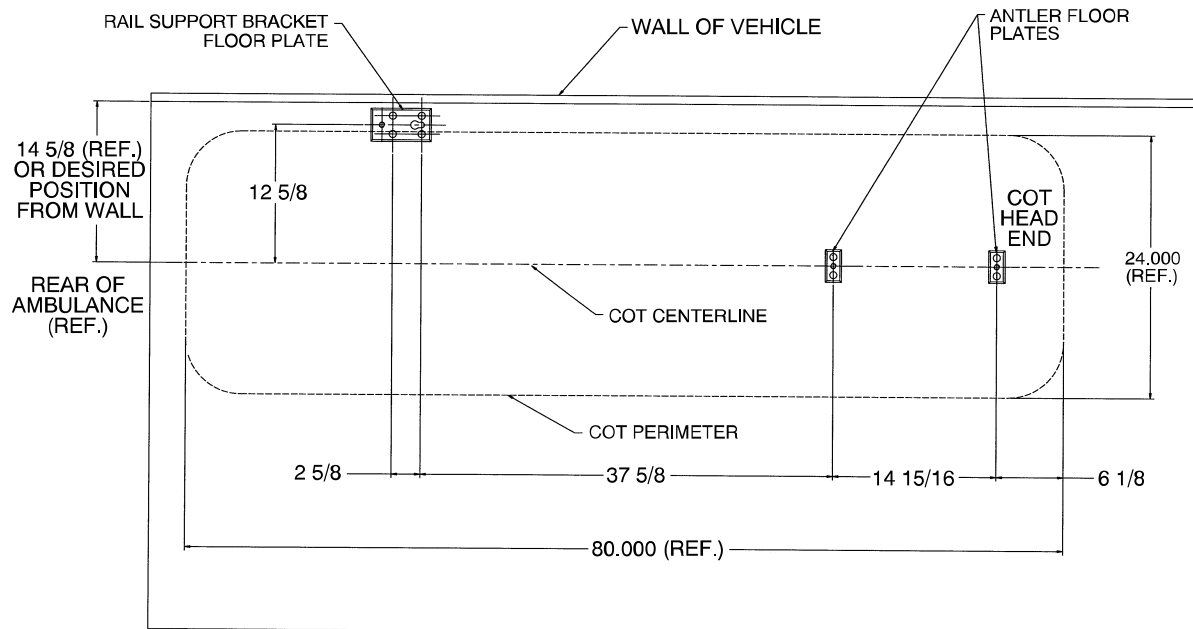
## Positioning of the Antler Floor Mounting Plates

1. Determine the desired position of the cot inside the vehicle allowing for proper clearance around the cot.

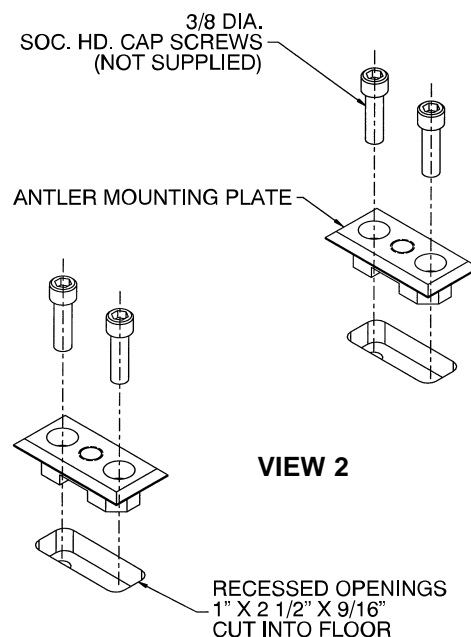
### NOTE

Federal ambulance specifications regarding aisle width and attendant seating may affect positioning of the mounting brackets. If specifications do not apply, the installer should be certain there is adequate clearance for proper patient access, traction splint projection, rear door closure, etc.

2. Using the dimensions shown in View 1 below, locate and drill the two points where the antler floor plates will attach. Recess two 1" x 2 1/2" x 9/16" deep openings into the floor centered over the plate locating points as shown in View 2 below.



**VIEW 1**



**VIEW 2**

# Installing Floor Mounted Cot Fastener

## Positioning of the Antler Floor Mounting Plates (Continued)

- Using two 3/8" diameter socket head cap screws (not supplied), anchor each antler floor plate into the recessed openings with the counter-bored holes facing up as shown in View 2 on page 5. Steel backing plates (4" x 6" x 3/8") are required for added support as shown in View 3 below (not supplied).

### CAUTION

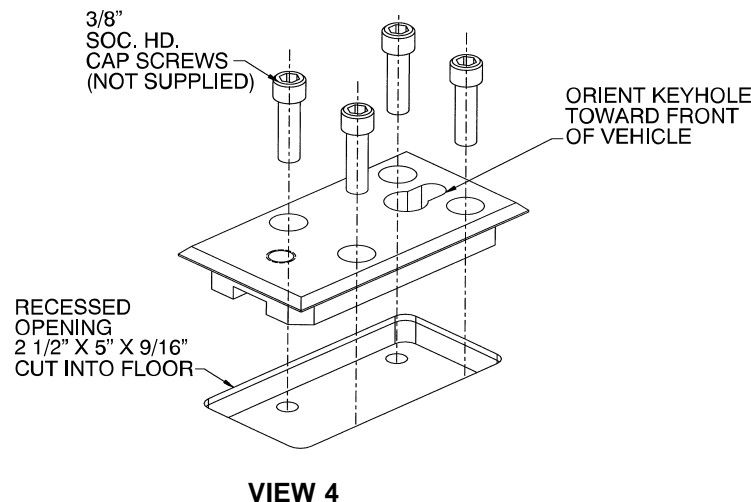
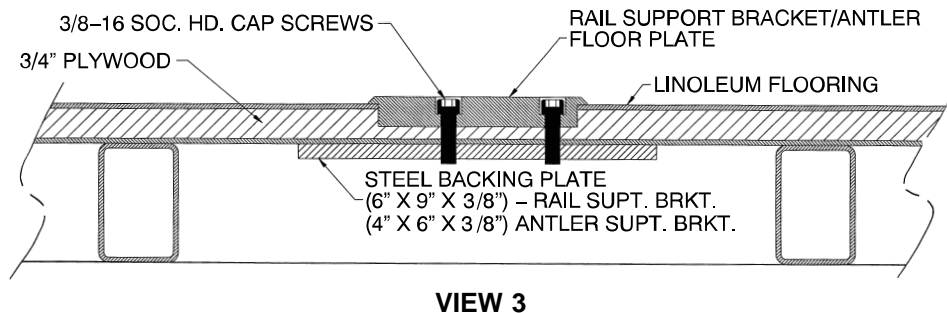
Do not use screws smaller than the 3/8" diameter specified to anchor any of the floor plates.

## Positioning of the Rail Floor Mounting Plates

- Using the dimensions shown in View 1 on page 5, locate and drill the four points where the rail support bracket floor plate will attach. Recess one 2 1/2" x 5" x 9/16" deep opening into the floor centered over the locating points as shown in View 4 below.
- Using four 3/8" diameter socket head cap screws (not supplied), anchor the floor plate into the recessed opening with the counter-bored holes facing up as shown in View 4 below. The keyhole should be towards the front of the vehicle. A steel backing plate (6" x 9" x 3/8") is required for added support as shown in View 3 below (not supplied).

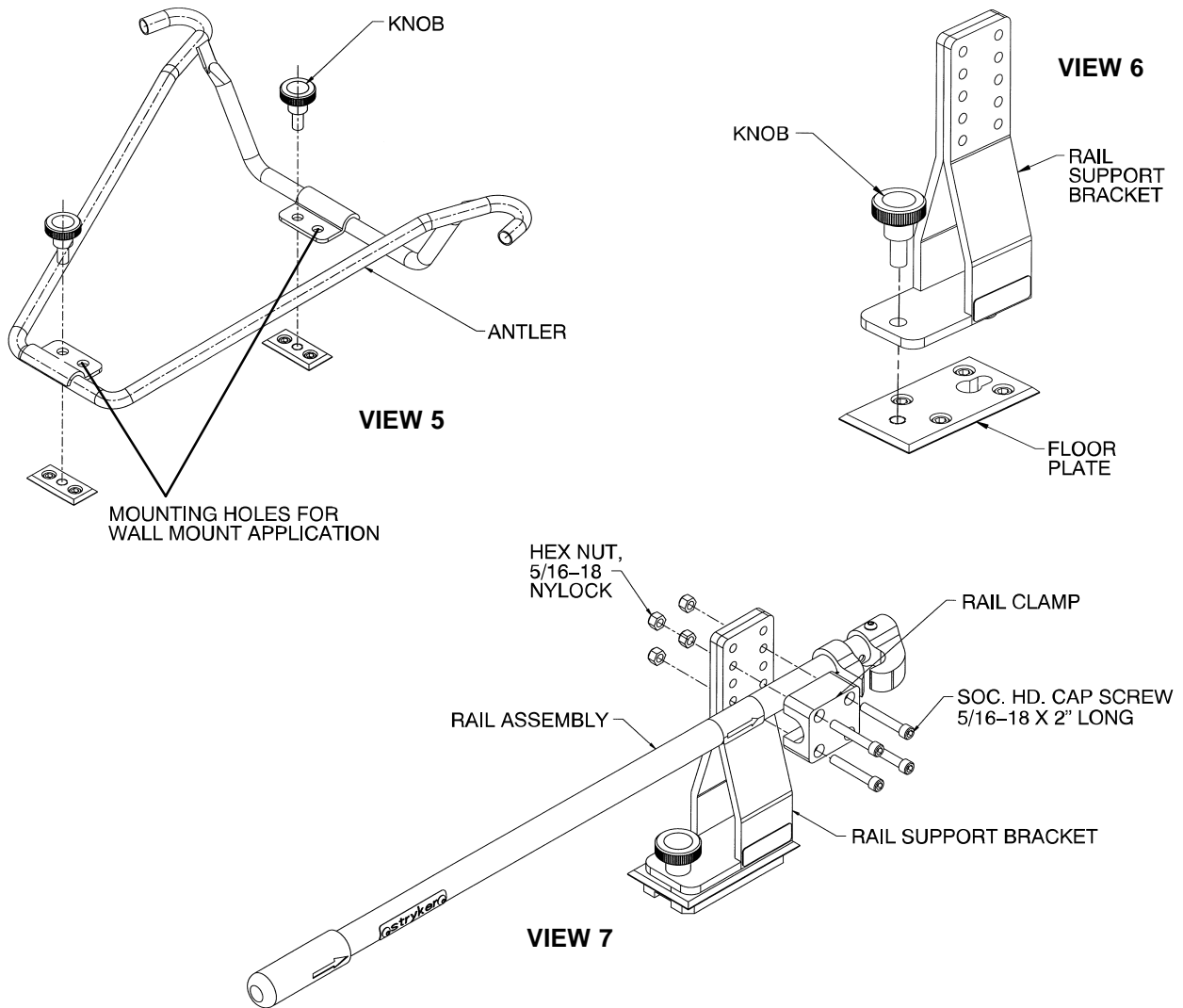
### NOTE

One set of additional floor plates is supplied to allow alternate positioning anywhere on the patient compartment floor. Cot space requirements are the same as shown in View 1 on page 5. Repeat the above procedure to install the alternate position floor plates.



# Installing Floor Mounted Cot Fastener

## Fastener Attachment



6. Position the antler over the floor plates and fasten with the red knobs as shown in View 5. The additional mounting holes in the antler bracket are used to position the antler for the model 6361 wall mounted cot fastener system.
7. Position the rail support bracket over the floor mounting plate. Insert the socket head screw into the key-hole and slide the assembly forward until the hole in the bracket lines up with the tapped hole in the floor plate. Fasten securely using one of the red knobs as shown in View 6.
8. Position the rail assembly on the support bracket and attach the rail using the rail clamp and four 5/16-18 x 2" socket head cap screws provided as shown in View 7.

### NOTE

The strength of any fastener mounting installation should be confirmed by the installer's own test procedure before placing in service.



# Installing Wall Mounted Cot Fastener

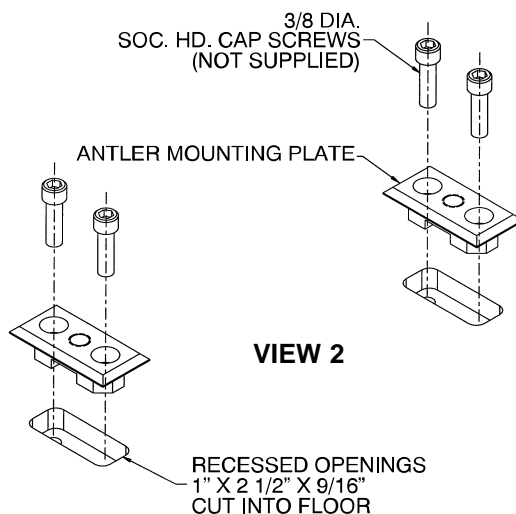
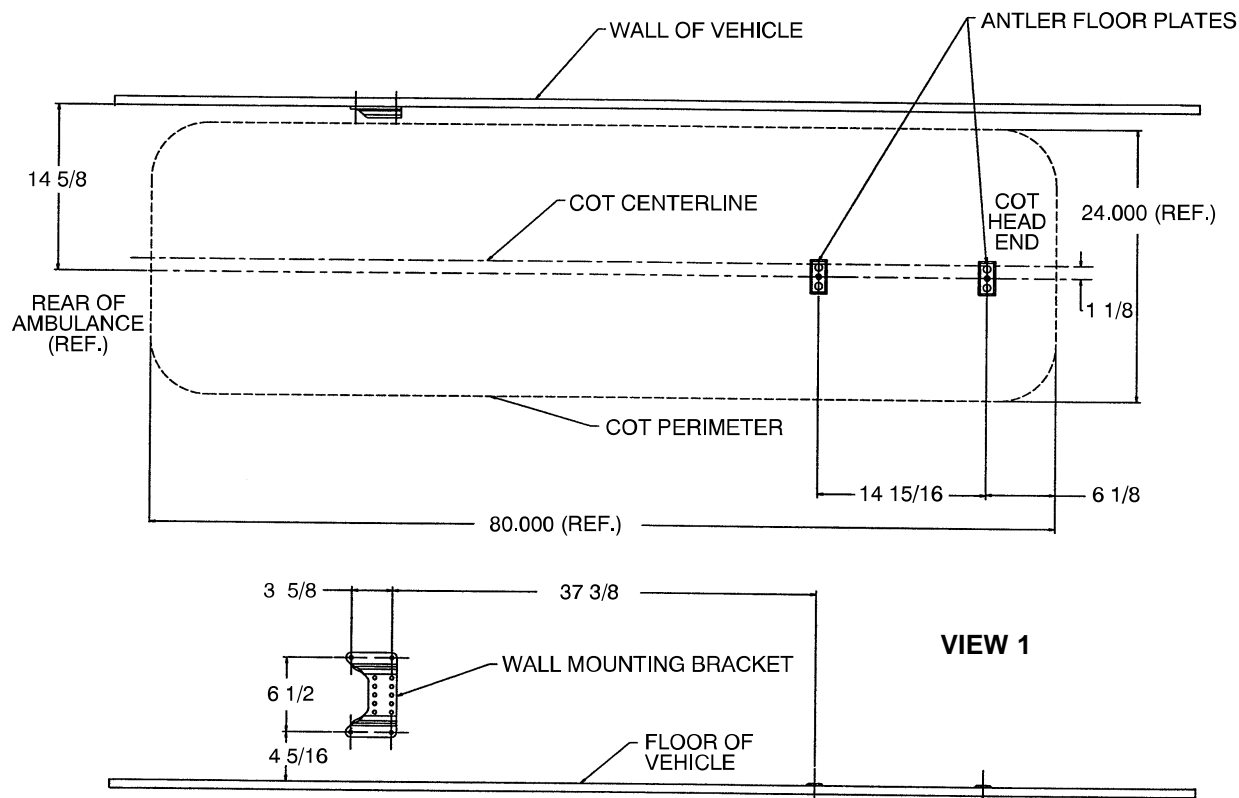
## Positioning of the Antler Floor Mounting Plates

1. Determine the desired position of the cot inside the vehicle allowing for proper clearance around the cot.

### NOTE

Federal ambulance specifications regarding aisle width and attendant seating may affect positioning of the mounting brackets. If specifications do not apply, the installer should be certain there is adequate clearance for proper patient access, traction splint projection, rear door closure, etc.

2. Using the dimensions shown in View 1, locate and drill two holes to attach the antler floor plates. Recess two 1" x 2 1/2" x 9/16" deep openings into the floor centered over the locating holes as shown in View 2.



# Installing Wall Mounted Cot Fastener

## Positioning of the Antler Floor Mounting Plates (Continued)

- Using two 3/8" diameter socket head cap screws (not supplied), anchor the floor plates into the recessed openings with the counter-bored holes facing up as shown in View 2 on page 8. Steel backing plates (4" x 6" x 3/8") are required for added support as shown in View 3 below (not supplied).

### CAUTION

Do not use screws smaller than the 3/8" diameter specified to anchor the floor plates.

### NOTE

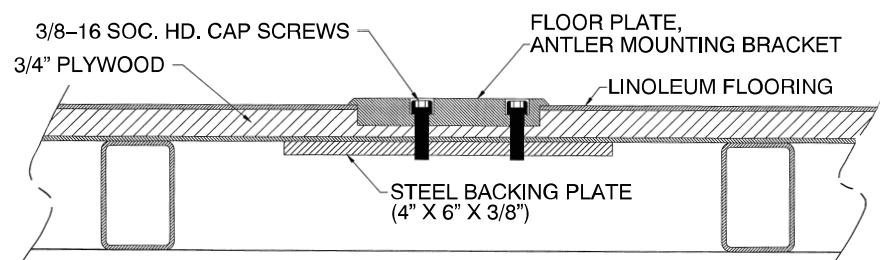
One set of additional floor plates is supplied to allow alternate positioning anywhere on the patient compartment floor. Cot space requirements are the same as shown in View 1. Repeat the above procedure to install the alternate position floor plates.

## Positioning of the Rail Wall Mounting Plate

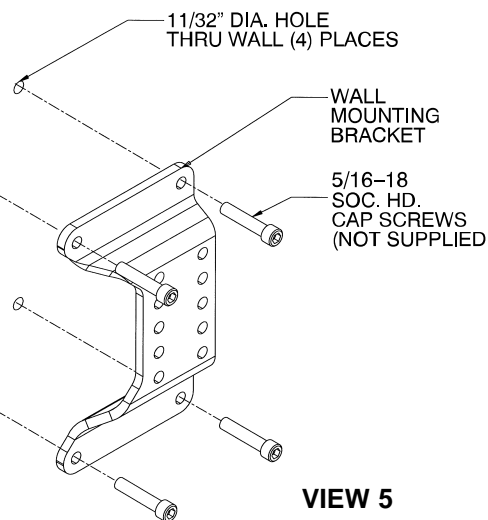
- Using the dimensions shown in View 1 on page 8, locate and drill the four points where the rail wall mounting bracket will attach.
- Using four 5/16" diameter socket head cap screws (not supplied), anchor the wall bracket as shown in Views 4 and 5 below. A steel backing plate (6" x 9" x 3/8") is required for added support as shown in View 4 (not supplied).

### CAUTION

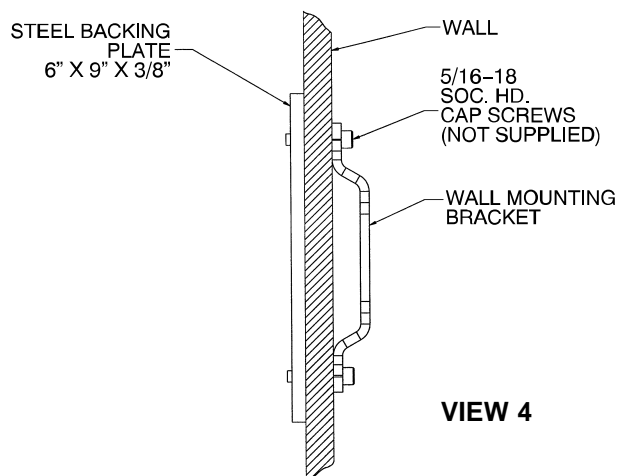
Do not use a screw smaller than the 5/16" diameter specified to anchor the wall plate.



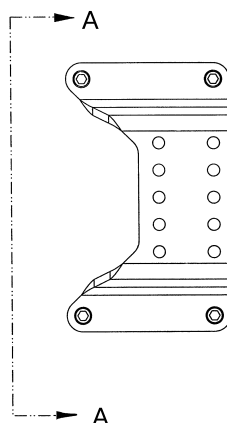
VIEW 3



VIEW 5

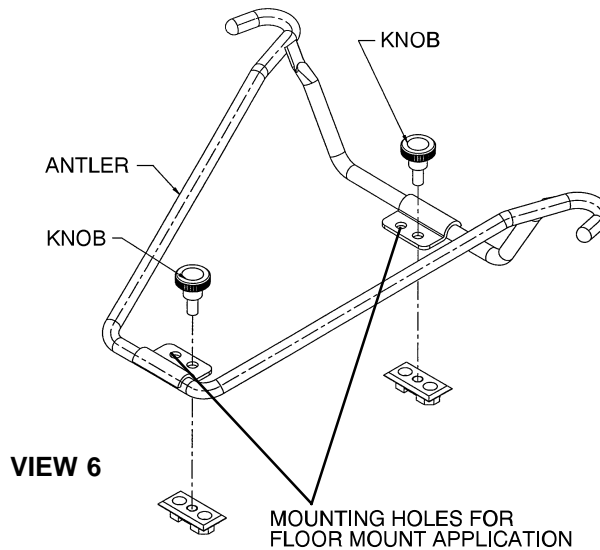


VIEW 4

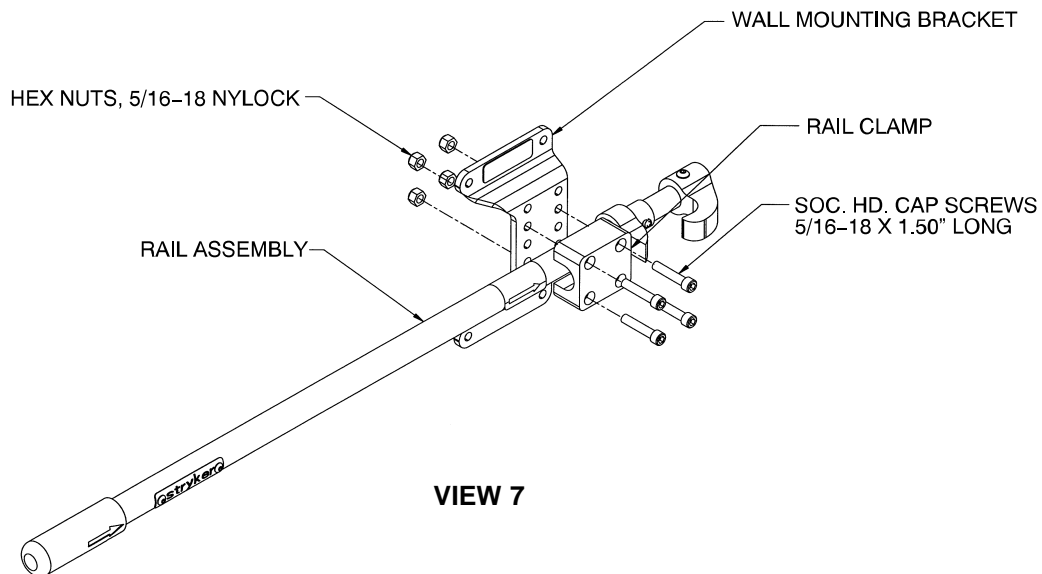


# Installing Wall Mounted Cot Fastener

## Fastener Attachment



6. Position the antler over the floor plates and fasten with the red knobs as shown in View 6. The additional mounting holes in the antler bracket are used to position the antler for the model 6360 floor mounted cot fastener system.



7. Position the rail assembly on the wall mounting bracket as shown in View 7. Attach the rail using the rail clamp and four 5/16-18 x 2" socket head cap screws and nuts provided.

### NOTE

The strength of any fastener mounting installation should be confirmed by the installer's own test procedure before placing in service.

# Cot Fastener Operation

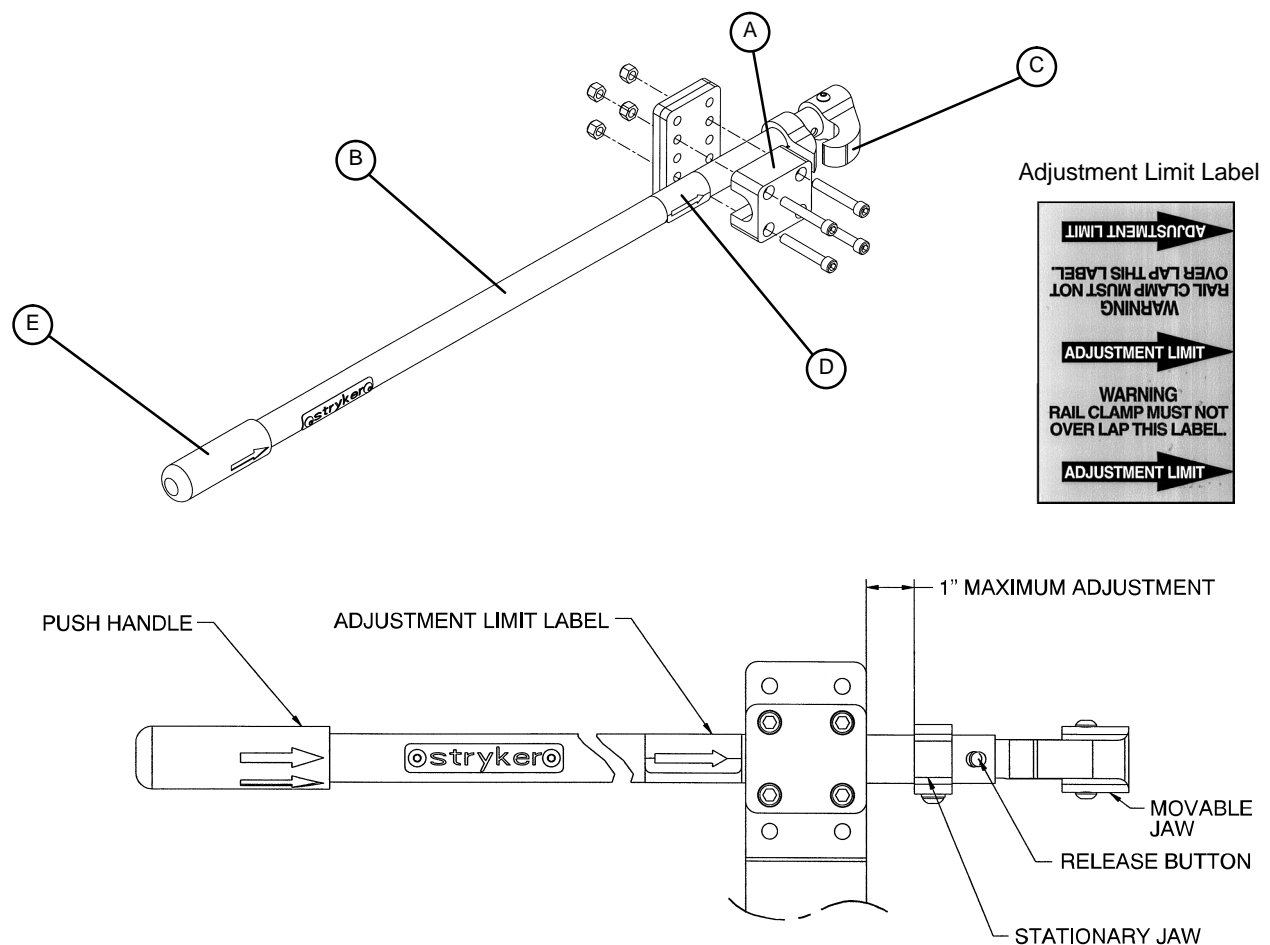
## Adjustment And Operation

1. Adjustment of the rail assembly may be required to compensate for slight variation in the position of the cot post.

Adjustment is made vertically by removing the rail clamp (A) and rail assembly (B) from the existing mounting holes and moving it to the set of holes that will align the clamp jaws (C) with the post on the cot. Position the rail assembly front/back. Adjustment is limited to 1/2" front/back or 1" total movement. Do not overlap the adjustment limit label (D) on the rail assembly. When adjustment is complete, rotate the rail assembly so the jaws are parallel with the floor and tighten the mounting screws until the rail clamp is drawn firmly against the support bracket.

### WARNING

To prevent the cot frame from coming out of the rail jaws, the space between the rail clamp and the rail stationary jaw must NEVER exceed 1". To prevent the cot from coming out of the rail jaws and causing possible injury to the patient or user, the rail clamp must not overlap the red adjustment limit label on the rail tube.



2. To operate the fastener, push the rail handle (E) forward until the release button engages and the jaws lock in the open position.

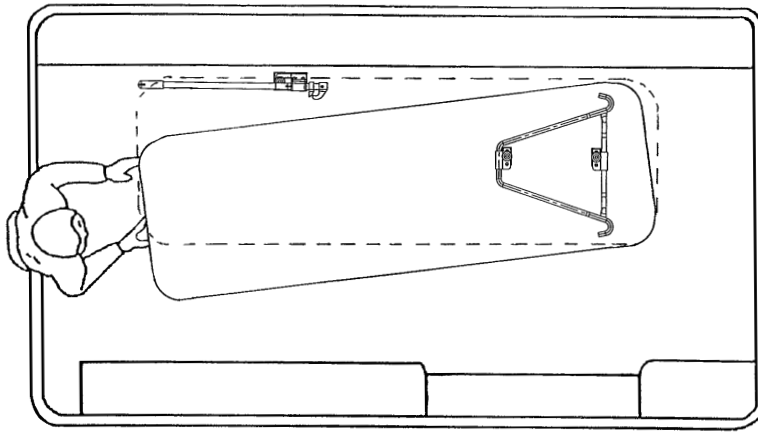
### WARNING

The fastener closes with a strong spring action. To avoid injury, DO NOT use hand or fingers to depress the release button when the rail jaws are open.

# Cot Fastener Operation

---

## Adjustment And Operation (Continued)



3. Guide the cot into the fastener at a slight angle, as shown above, engaging the loading wheels with the antler. Move the foot end of the cot sideways until the cot post enters the rail jaws and presses the release button. The rail jaws will close, locking the cot securely in position.
4. Cot bedding may prevent the attendants from seeing the rail jaws close around the cot post. The properly installed and adjusted fastener closes with a "positive" sound and feel that serves as a good indicator of proper engagement. Check for positive engagement by grasping the cot frame and pushing/pulling with sufficient force to disengage the cot if the fastener jaws are not completely closed.
5. To remove the cot, use one hand to actuate the push handle forward, far enough for the jaws to release the cot post. With the other hand, grasp the cot and roll it away from the rail.

---

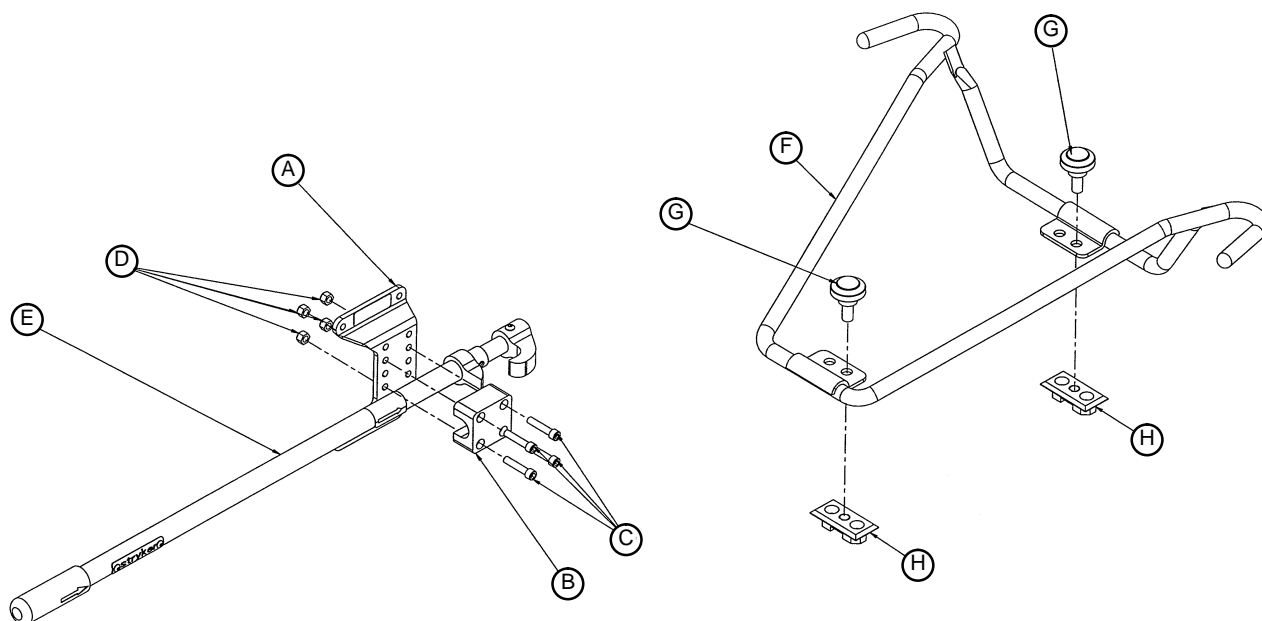
### **WARNING**

The fastener closes with a strong spring action. To avoid injury, DO NOT use hand or fingers to depress the release button when the rail jaws are open.

---

# Wall Mounted Cot Fastener Assembly

Assembly part number 6361-30-10

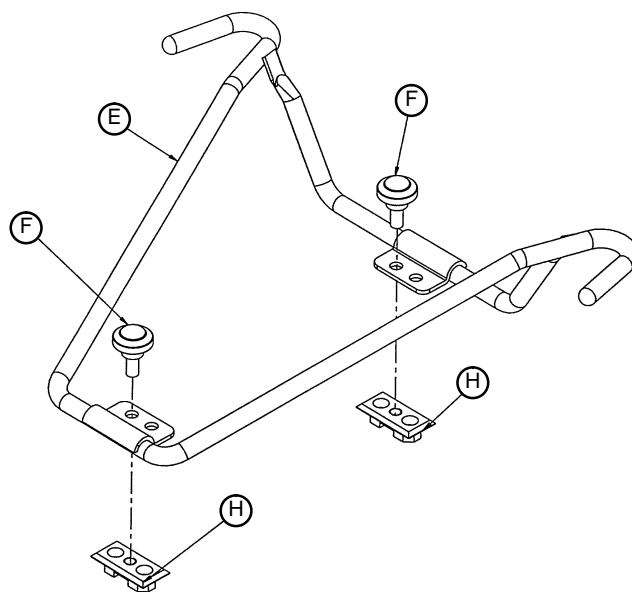
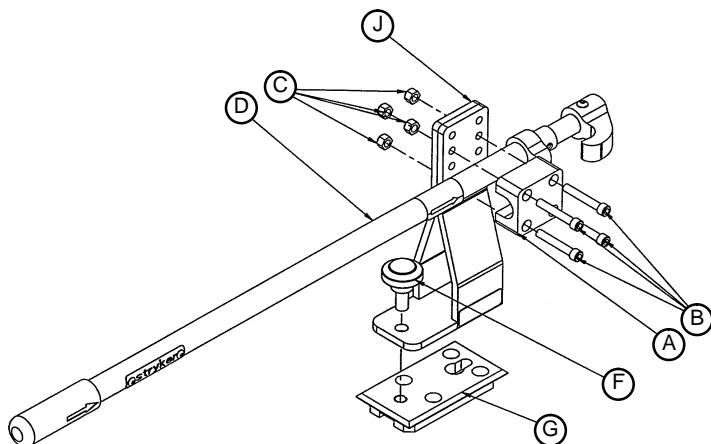


Item	Part No.	Part Name	Qty.
A	6361-30-12	Wall Mounting Bracket	1
B	6360-30-18	Rail Clamp	1
C	4-71	Soc. Hd. Cap Screw	4
D	16-36	Hex Nut	4
E	6360-20-10	Rail Assembly	1*
F	6360-30-23	Antler Weldment	1
G	6360-30-31	Knob Assembly	2
H	6360-30-12	Small Floor Plate	2

\* The rail assembly is not designed to be a repairable item. It must be purchased as a complete assembly. Individual components are not available for order.

# Floor Mounted Cot Fastener Assembly

Assembly part number 6360-30-10



Item	Part No.	Part Name	Qty.
A	6360-30-18	Rail Clamp	1
B	4-250	Soc. Hd. Cap Screw	4
C	16-36	Hex Nut	4
D	6360-20-10	Rail Assembly	1*
E	6360-30-23	Antler Weldment	1
F	6360-30-31	Knob Assembly	3
G	6360-30-11	Large Floor Plate	2
H	6360-30-12	Small Floor Plate	4
J	6360-30-24	Rail Support Bracket	1

\* The rail assembly is not designed to be a repairable item. It must be purchased as a complete assembly. Individual components are not available for order.



6300 Sprinkle Road, Kalamazoo, MI 49001-9799

(800) 327-0770

---

DH 6/95 6360-90-10 REV A