

Ambulance Cot Fastener

Operations Manual

REF	6370
REF	6371
REF	6377
REF	6378
REF	6391
REF	6393



Symbols











	Consult instructions for use
	General warning
	Caution
	Catalogue number
	Lot (batch) code
	Serial number
	For US patents see www.stryker.com/patents
	Manufacturer
	Date of manufacturer
	Safe working load

Table of Contents

Warning/Caution/Note Definition	2
Summary of safety precautions	2
Introduction	4
Product description	4
Indications for use	4
Expected service life	4
Contraindications	4
Specifications	4
Product illustration	5
Contact information	5
Serial number location	6
Cot compatibility	6
Installation	8
Installing the cot fastener	8
Selecting the vehicle safety hook	8
Vehicle configuration	9
Positioning of the vehicle safety hook, front to back	10
Positioning of the vehicle safety hook, side to side	11
Installing the vehicle safety hook	12
Installing the floor plate	13
Installing the wall plate	16
Installation checklist	20
Operation	21
Mass casualty incident planning	21
Adjusting the rail assembly	21
Testing the cot fastener	23
Accessories and parts	23
Cleaning	24
Suggested cleaners	24
Preventive maintenance	25

Warning/Caution/Note Definition

The words **WARNING**, **CAUTION**, and **NOTE** carry special meanings and should be carefully reviewed.

WARNING

Alerts the reader about a situation which, if not avoided, could result in death or serious injury. It may also describe potential serious adverse reactions and safety hazards.

CAUTION

Alerts the reader of a potentially hazardous situation which, if not avoided, may result in minor or moderate injury to the user or patient or damage to the product or other property. This includes special care necessary for the safe and effective use of the device and the care necessary to avoid damage to a device that may occur as a result of use or misuse.

Note - Provides special information to make maintenance easier or important instructions clearer.

Summary of safety precautions

Always read and strictly follow the warnings and cautions listed on this page. Service only by qualified personnel.

WARNING

- Always replace the cot fastener if it has been involved in an accident.
- A height limit kit is recommended for vehicle deck heights less than 30 in. (67 cm).
- Always install the cot fastener by qualified personnel only. Improper installation could result in injury to the patient or operator.
- Always make sure that all cots meet the installation specifications for the Stryker cot fastener system.
- Always adjust the rail clamp assembly to match the cot retaining post position for the cot manufacturer and model number.
- Always adjust the mounting location to maintain the proper position of the vehicle safety hook face when you replace an existing vehicle safety hook with a new style.
- Always have a certified mechanic, familiar with ambulance vehicle construction, install the vehicle safety hook to avoid injury to the patient or operator.
- Always consult the vehicle manufacturer before you install the vehicle safety hook. Make sure that the installation of the vehicle safety hook does not damage or interfere with the brake lines, oxygen lines, fuel lines, fuel tank, or electrical wiring of the vehicle.
- Do not modify the cot or the vehicle safety hook. If the cot safety bar does not connect with the vehicle safety hook in any of these positions (left, center, or right), modify the vehicle.
- Always make sure that the cot safety bar connects with the vehicle safety hook every time before you install the vehicle safety hook.
- Always make sure that the cot safety bar connects with the vehicle safety hook before you remove the cot from the vehicle patient compartment to avoid the risk of injury.
- Always use screws that are long enough to go through the vehicle patient compartment floor, washer, and nut, with at least two full threads in the nut. The socket head cap screw length depends on the thickness of the vehicle floor.
- Do not use screws smaller than the 3/8 in. diameter specified to anchor the floor plates.
- Do not use a screw smaller than the 5/16 in. diameter specified to anchor the wall plate.
- Do not allow the rail clamp to overlap the red adjustment limit label on the rail tube. To prevent the rail jaws from releasing the cot frame, the space between the rail clamp and the rail stationary jaw must never exceed 1 in. (2.5 cm).
- Do not use hand or fingers to press the release button when the rail jaws are open. The rail clamp fastener closes with a strong spring action.
- Always test the fastener using AMD Standard 004 as a minimum. Improper testing can result in injury.

CAUTION

- Improper usage of the product can cause injury to the patient or operator. Operate the product only as described in this manual.

- Do not modify the product or any components of the product. Modifying the product can cause unpredictable operation resulting in injury to patient or operator. Modifying the product also voids its warranty.
 - Always set the cot load height before you place the cot into service.
-

Introduction

This manual assists you with the operation or maintenance of your Stryker product. Read this manual before operating or maintaining this product. Set methods and procedures to educate and train your staff on the safe operation or maintenance of this product.

CAUTION

- Improper usage of the product can cause injury to the patient or operator. Operate the product only as described in this manual.
 - Do not modify the product or any components of the product. Modifying the product can cause unpredictable operation resulting in injury to patient or operator. Modifying the product also voids its warranty.
-

Note

- This manual is a permanent part of the product and should remain with the product even if the product is sold.
- Stryker continually seeks advancements in product design and quality. This manual contains the most current product information available at the time of printing. There may be minor discrepancies between your product and this manual. If you have any questions, contact Stryker Customer Service or Technical Support at 1-800-327-0770.

Product description

The Stryker ambulance cot fastener is designed to hold a compatible ambulance cot in an emergency vehicle for patient transport purposes. The ambulance cot fastener performs this function after the user manually loads the compatible cot into the emergency vehicle and guides it into the fastener.

Indications for use

The Stryker Model 6370/6371/6377/6378/6391/6393 cot fasteners are not designed for any purpose other than to restrict movement of an ambulance cot being transported in the patient compartment of an ambulance under normal conditions.

Note - Usage of these products in any other way becomes the complete responsibility of the owner or user. The Model 6370/6371/6377/6378/6391/6393 cot fasteners comply to the Ambulance Manufacturers Division specification 004. Caution must be used at all times during placement of the cot into the ambulance.

Expected service life

Cot fasteners have a seven year expected service life under normal use conditions and with appropriate periodic maintenance.

Contraindications

None known.

Specifications

Model	Type	Part number
6371	Wall mounted	6371-000-000
6370	Floor mounted	6370-000-000
6377	Floor mounted	6377-000-000
6378	Floor mounted (reduced length)	6378-000-000

Model	Type	Part number
6391	Wall mounted mass casualty Power-LOAD	6391-001-001
6391	Floor mounted mass casualty Power-LOAD	6391-001-002
6393	Wall mounted mass casualty Performance-LOAD	6393-001-001
6393	Floor mounted mass casualty Performance-LOAD	6393-001-002

WARNING

- Always replace the cot fastener if it has been involved in an accident.
- A height limit kit is recommended for vehicle deck heights less than 30 in. (67 cm).

Product illustration

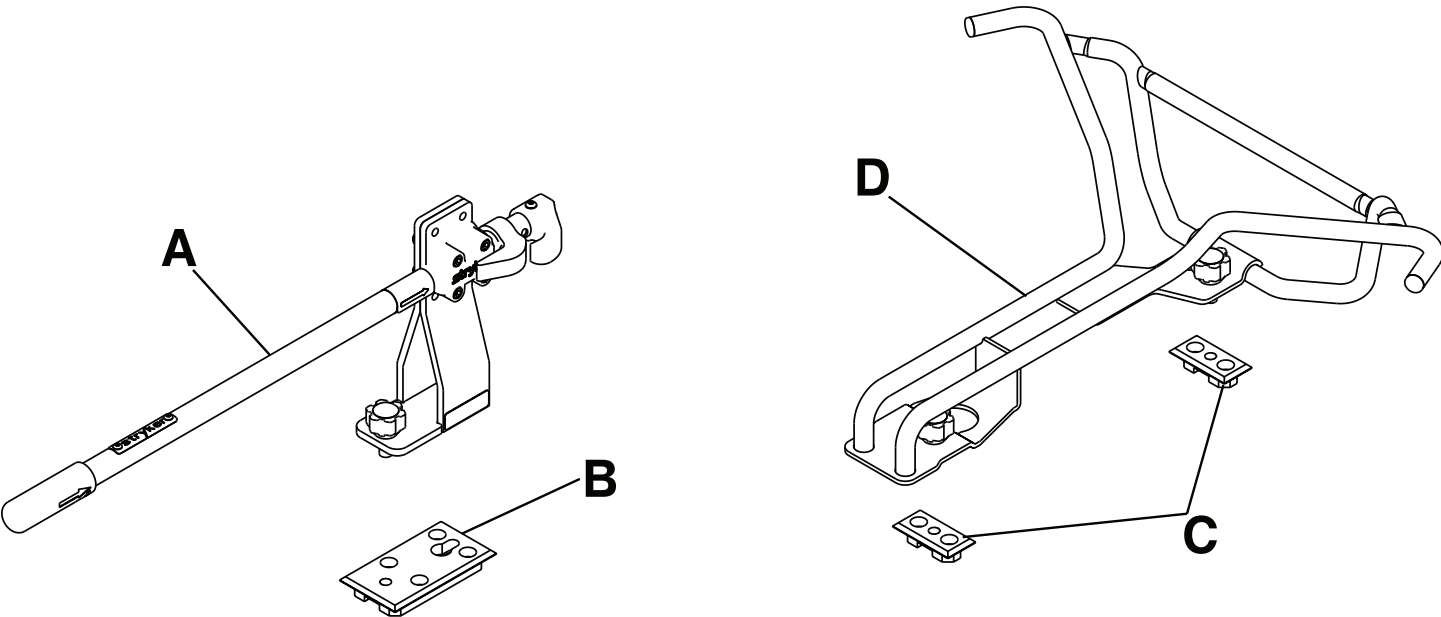


Figure 1 – Product illustration

A	Rail assembly
B	Floor plate
C	Floor plates
D	Antler assembly

Contact information

Contact Stryker Customer Service or Technical Support at: 1-800-327-0770.

Stryker Medical
3800 E. Centre Avenue

To view your operations or maintenance manual online, see <https://techweb.stryker.com/>.

Have the serial number (A) of your Stryker product available when calling Stryker Customer Service or Technical Support. Include the serial number in all written communication.

Serial number location

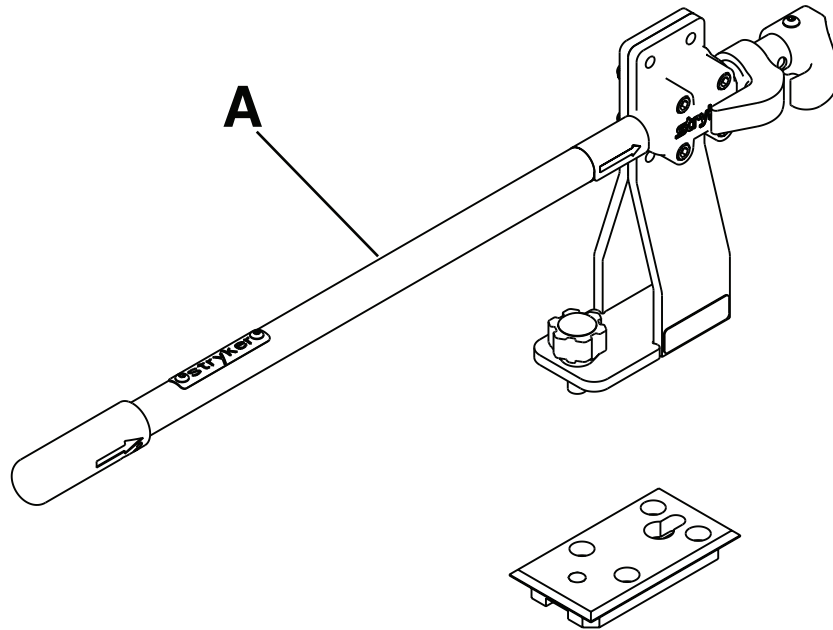


Figure 2 – Serial number location

Cot compatibility

The Stryker 6370/6371/6377/6378/6391/6393 cot fastener systems are compatible only with cots that conform to the installation specifications.

WARNING

- Always install the cot fastener by qualified personnel only. Improper installation could result in injury to the patient or operator.
 - Always make sure that all cots meet the installation specifications for the Stryker cot fastener system.
 - Always adjust the rail clamp assembly to match the cot retaining post position for the cot manufacturer and model number.
-

Ambulance cots that meet these specifications include:

Stryker

- Model 6060 DX Emergency Transport
- Model 6070 LX Emergency Transport
- Model 6080 **MX-PRO**
- Model 6081 **MX-PRO** Incubator Transporter
- Model 6082 **MX-PRO**
- Model 6083 **MX-PRO** Bariatric Transport

- Model 6085 **Performance-PRO XT**
- Model 6086 **Performance-PRO XT**
- Model 6090 **EZ-PRO**
- Model 6091 **EZ-PRO 2**
- Model 6092 **EZ-PRO R3**
- Model 6092 **EZ-PRO R4**
- Model 6500 **Power-PRO XT**
- Model 6506 **Power-PRO XT**
- Model 6507 **Power-PRO 2**
- Model 6510 **Power-PRO IT**
- Model 6516 **Power-PRO IT**

Ferno-Washington®

- Model 29-M Three Level Roll-In Cot*
- Model 93 ES **Squadmate™***
- Model 93 EX **Squadmate™***
- Model 35-A **Mobile Transporter™***
- Model 35-A+ **Mobile Transporter Plus™***
- Model 35-IT Incubator Transporter*
- Model 93P **PROFlexx®**
- Model 35X **PROFlexx®**
- Model 28Z **PROFlexx®**
- **PowerFlexx®**

Note - *1999 model year or earlier. Stryker is not responsible for changes in specifications to other manufacturer's cots.

Installation

Installing the cot fastener

The Stryker cot fastener systems are compatible only with cots that conform to the installation specifications.

WARNING

- Always install the cot fastener by qualified personnel only. Improper installation could result in injury to the patient or operator.
 - Always make sure that all cots meet the installation specifications for the Stryker cot fastener system.
 - Always adjust the rail clamp assembly to match the cot retaining post position for the cot manufacturer and model number.
-

These instructions are intended for cots with antler style cot fastener systems. For crash-rated cot fasteners, see the appropriate Operations Manual for installation instructions.

Selecting the vehicle safety hook

The vehicle safety hook is a device that ships with the cot. The cot safety bar and vehicle safety hook keep the cot from being accidentally removed from the vehicle and provide increased operator assurance and confidence when loading and unloading.

WARNING - Always adjust the mounting location to maintain the proper position of the vehicle safety hook face when you replace an existing vehicle safety hook with a new style.

Note - These instructions are intended for cots with antler style cot fastener systems. For crash-rated cot fasteners, see the appropriate Operations Manual for installation instructions. Crash-rated cot fasteners are shipped and installed with a vehicle safety hook, so no additional hook is needed.

The vehicle safety hook was designed for compatibility and proper operation when loading and unloading the cot from a vehicle that is compliant with Federal Regulation KKK-A-1822. Stryker offers three different types of vehicle safety hooks that are ordered and shipped with your cot. These vehicle safety hook types meet the needs of various emergency vehicle configurations, specifically the length and location of the floor structure support that is located in the rear of the vehicle.

To select which vehicle safety hook is appropriate for your vehicle configuration:

- Consider the location of the floor structure support where there is adequate room to mount the vehicle safety hook.
- Mount the vehicle safety hook into the back of the vehicle. Provide bumper clearance to allow the operators to load and unload the cot from the vehicle.
- Note the differences in vehicle design. Each vehicle safety hook provides a different mounting location option to maintain the appropriate distance between the face of the vehicle safety hook and the edge of the door sill.

Due to the differences in vehicle dimensions and the floor structure support locations, each vehicle safety hook allows for a different mounting location. Select the correct position for your vehicle safety hook installation.

- *Positioning of the vehicle safety hook, front to back* (page 10)
- *Positioning of the vehicle safety hook, side to side* (page 11)

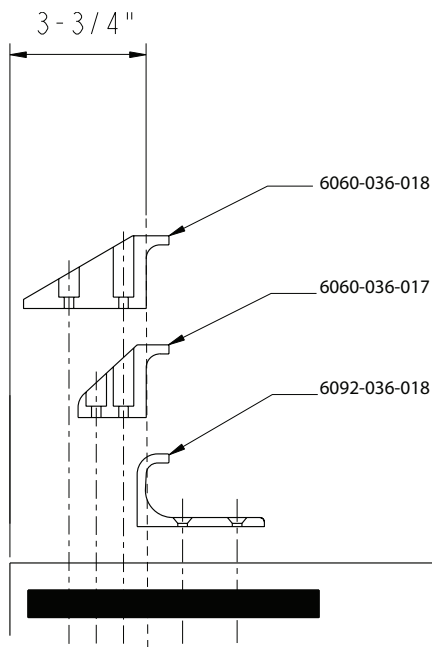


Figure 3 – Vehicle safety hook types

Vehicle configuration

WARNING

- Always have a certified mechanic, familiar with ambulance vehicle construction, install the vehicle safety hook to avoid injury to the patient or operator.
- Always consult the vehicle manufacturer before you install the vehicle safety hook. Make sure that the installation of the vehicle safety hook does not damage or interfere with the brake lines, oxygen lines, fuel lines, fuel tank, or electrical wiring of the vehicle.

CAUTION - Always set the cot load height before you place the cot into service.

The cot is compatible with all vehicle deck heights that meet the Federal Specification for the Star-of-Life Ambulance KKK-A-1822. See specifications for maximum load height.

According to Federal Specification for the Star-of-Life Ambulance KKK-A-1822:

- The rear of the ambulance shall be furnished with a sturdy, full-width, rear bumper, with a step secured to the vehicle's chassis frame.
- The tread of the step shall have a minimum depth of 5 in. (13 cm) and a maximum depth of 10 in. (25 cm).
- If the step protrudes more than 7 in. (18 cm) from the rear of the vehicle, a fold-up step shall be furnished.

According to federal regulations (reference KKK-A-1822), the bumper height of the vehicle shall be installed equidistant ± 2 in. (± 5 cm) from the vehicle floor to the ground level, which is defined as the vehicle deck height. Installation of the vehicle safety hook into any vehicle compliant with this federal specification provides adequate clearance for the cot base to lower to its fully extended position.

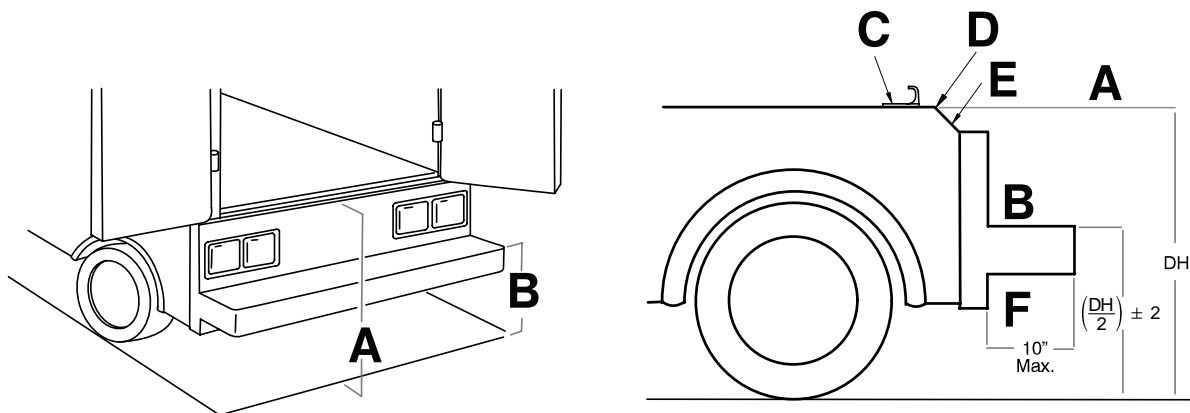


Figure 4 – Deck and bumper height

A	Deck height (DH)
B	Bumper height
C	Vehicle safety hook
D	Sill edge
E	Sill
F	Bumper depth

Positioning of the vehicle safety hook, front to back

Before vehicle safety hook installation, check the front to back and side to side positioning when you unload and load the cot.

To check the front to back positioning:

1. Select the appropriate vehicle safety hook (*Selecting the vehicle safety hook* (page 8)).
2. Position the vehicle safety hook at least 3-3/4 in. from the leading edge of the door sill (A). The recommended distance from the face of the safety hook is no less than 3-3/4 in.
3. Check that you can secure the vehicle safety hook to the mount in the back of the vehicle.
4. Check that you have adequate bumper clearance to allow the cot to be loaded and unloaded from the vehicle.
5. Confirm the side to side placement of the vehicle safety hook (*Positioning of the vehicle safety hook, side to side* (page 11)).

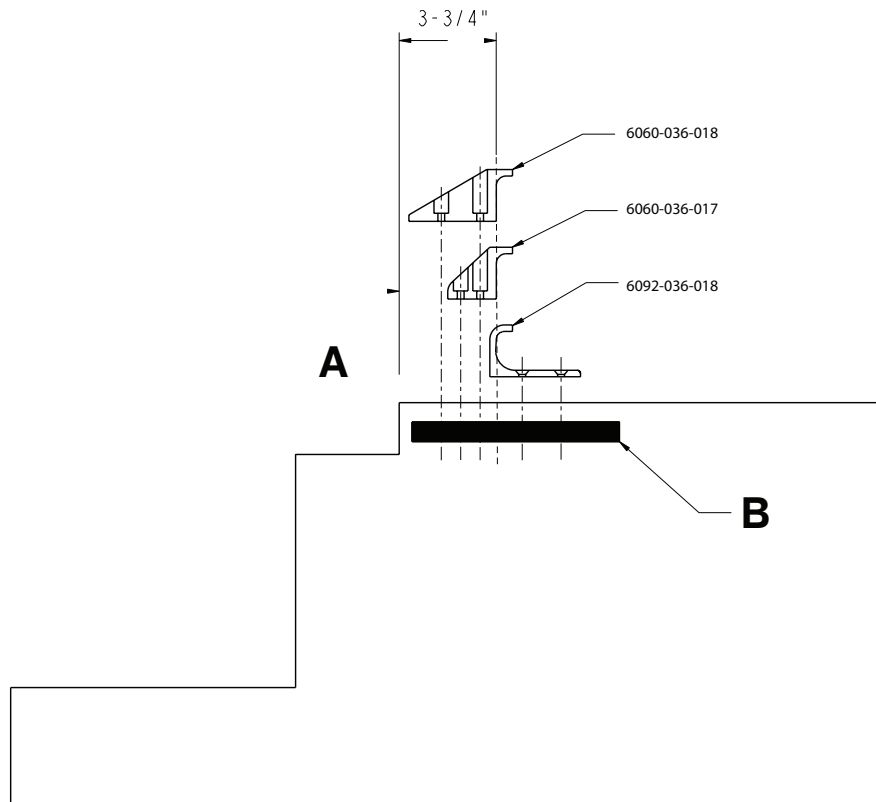


Figure 5 – Vehicle safety hook placement

A	Sill
B	Floor structure support

Positioning of the vehicle safety hook, side to side

Before vehicle safety hook installation, check the front to back and side to side positioning when you unload and load the cot.

WARNING

- Do not modify the cot or the vehicle safety hook. If the cot safety bar does not connect with the vehicle safety hook in any of these positions (left, center, or right), modify the vehicle.
- Always make sure that the cot safety bar connects with the vehicle safety hook every time before you install the vehicle safety hook.

To check the side to side positioning:

1. Remove the cot from the cot fastener and unload it from the vehicle.

Note - Pay attention to the position of the cot load wheels and the cot safety bar when you remove the cot.

2. Mark the center of the cot safety bar on the vehicle floor.
3. Check that the position marked in step 2 is where the cot safety bar connects with the vehicle safety hook every time when you unload the cot in a variety of positions (such as all the way to the left and all the way to the right).

Installing the vehicle safety hook

Before vehicle safety hook installation, the certified mechanic should plan for the placement of the vehicle safety hook in the rear of the vehicle patient compartment.

WARNING

- Always have a certified mechanic, familiar with ambulance vehicle construction, install the vehicle safety hook to avoid injury to the patient or operator.
 - Always consult the vehicle manufacturer before you install the vehicle safety hook. Make sure that the installation of the vehicle safety hook does not damage or interfere with the brake lines, oxygen lines, fuel lines, fuel tank, or electrical wiring of the vehicle.
 - Always make sure that the cot safety bar connects with the vehicle safety hook before you remove the cot from the vehicle patient compartment to avoid the risk of injury.
 - Always use screws that are long enough to go through the vehicle patient compartment floor, washer, and nut, with at least two full threads in the nut. The socket head cap screw length depends on the thickness of the vehicle floor.
-

Hardware required (not supplied):

- (2) Grade 5, minimum 1/4"-20 socket head cap screws * for the short vehicle safety hook or long vehicle safety hook
 - (2) Grade 5, minimum 1/4"-20 flat socket head cap screws * for the J vehicle safety hook
 - (2) Flat washers
 - (2) Lock washers
 - (2) 1/4"-20 nuts
1. Determine the correct vehicle safety hook front to back and side to side positioning, so the cot safety bar connects to the vehicle safety hook every time.
 - *Positioning of the vehicle safety hook, front to back* (page 10)
 - *Positioning of the vehicle safety hook, side to side* (page 11)
 2. Drill the holes for the screws.
 3. Fasten the vehicle safety hook to the vehicle patient compartment floor.
 4. Check that the cot safety bar connects with the vehicle safety hook before you remove the cot from the vehicle patient compartment.

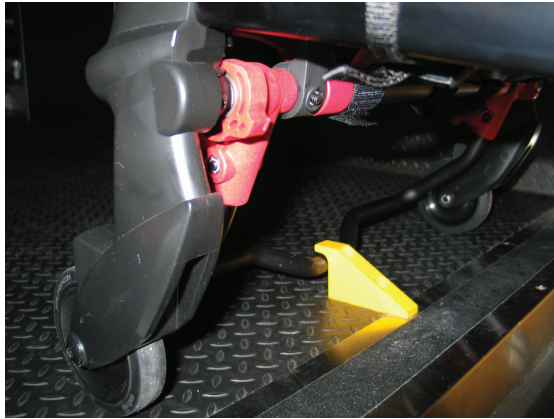


Figure 6 – Safety bar secured in the vehicle safety hook

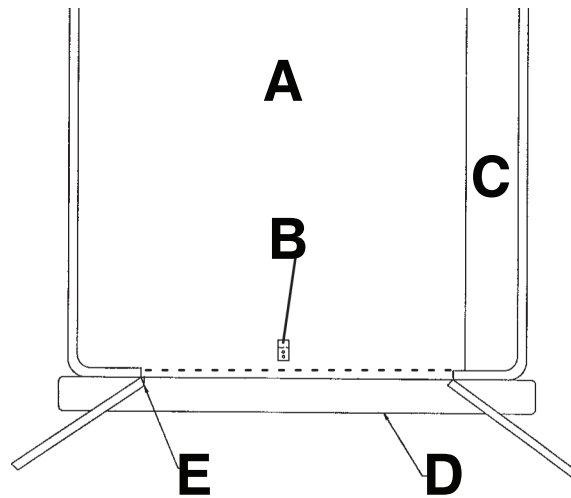


Figure 7 – Vehicle safety hook placement

A	Top view of vehicle
B	Vehicle safety hook
C	Squad bench
D	Bumper
E	Door frame

After installation, check that the cot legs lock into the load position without contacting the vehicle bumper.

Installing the floor plate

The Stryker cot fastener system for the floor plate mounting model is compatible only with cots that conform to the floor plate mounting installation specifications.

To position the antler floor mounting plates:

1. Determine the desired position of the cot inside the vehicle to allow for proper clearance around the cot.

Note - Federal ambulance specifications regarding aisle width and attendant seating may affect positioning of the mounting brackets. If specifications do not apply, the installer should be certain that there is adequate clearance for proper patient access, traction splint projection, rear door closure, etc.

2. Using the dimensions shown in Figure 8, locate and drill the points where the floor plates will attach.

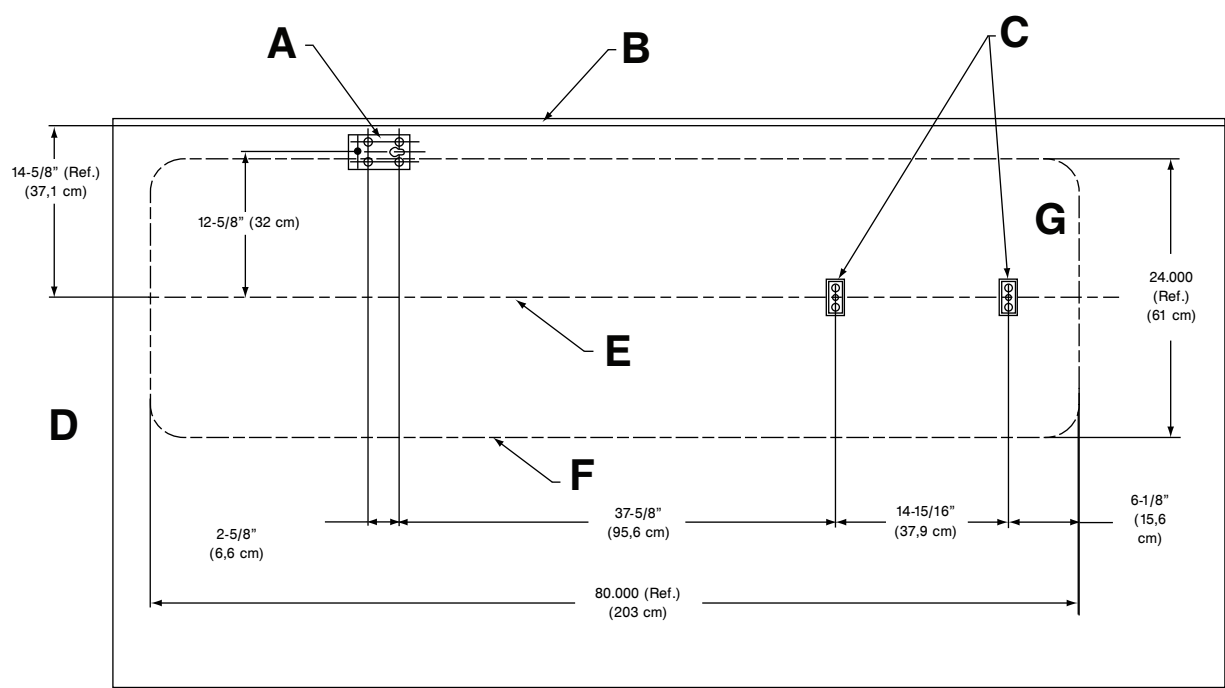


Figure 8 – Floor plate installation locations

A	Rail support bracket floor plate	E	Cot center line
B	Wall of vehicle	F	Cot perimeter
C	Antler floor plates	G	Cot head end
D	Rear of ambulance		

3. Cut 1 in. x 2-1/2 in. x 9/16 in. deep recessed openings (A) into the floor centered over the locating holes (Figure 9).
4. Using two 3/8 in. diameter socket head cap screws (B), preferably grade 8, anchor each floor plate (C) into the recessed openings with the counter-bored holes facing up (Figure 10).

Note - Steel backing plates (or equivalent) (D) (not supplied) are required for added support (Figure 10).

WARNING - Do not use screws smaller than the 3/8 in. diameter specified to anchor the floor plates.

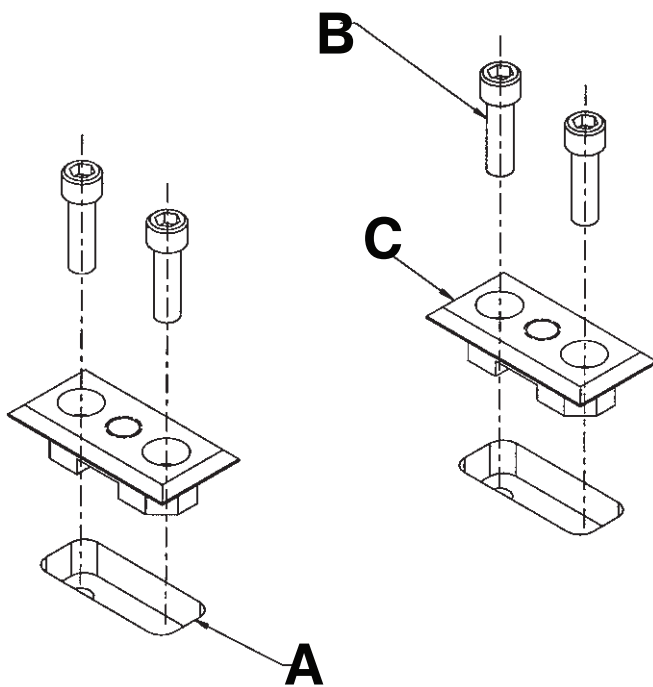


Figure 9 – Cut recessed openings over locating holes

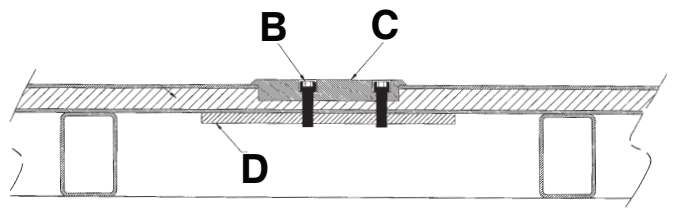


Figure 10 – Anchor floor plate into recessed openings

5. Using the dimensions shown in Figure 8, locate and drill the four points where the rail support bracket floor plate will attach. Cut one 2 1/2 in. x 5 in. x 9/16 in. deep opening (E) into the floor centered over the locating points (Figure 11).
6. Using four 3/8 in. diameter socket head cap screws (F), anchor the floor plate into the recessed opening with the counter-bored holes facing up (G) (Figure 11). The keyhole should face toward the front of the vehicle.
 - A steel backing plate (or equivalent) is required for added support (not supplied).
 - One set of additional floor plates is supplied with the Model 6377 fastener to allow alternate positioning anywhere on the patient compartment floor. Cot space requirements are the same as shown in Figure 8. Repeat the above procedure to install the alternate position floor plates.

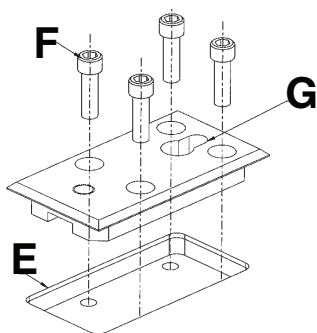


Figure 11 – Floor plate anchor and locating points

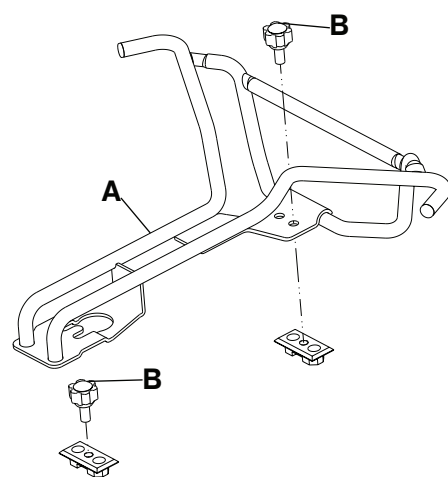


Figure 12 – Position and fasten antler over the floor plates

7. Position the antler over the floor plates and fasten the antler (A) with the red knobs (B) (Figure 12).

Note

- Use the additional mounting holes in the antler bracket to position the antler for the Model 6371 wall mounted cot fastener system.
 - The red knobs that fasten the antler assembly to the patient compartment floor plate are not compatible with the universal floor plate. See the Universal Floor Plate Installation Instructions for floor plate installation.
8. Position the rail support bracket (C) over the floor mounting plate (D) (Figure 13).
 9. Insert the socket head screw into the keyhole and slide the assembly forward until the hole in the bracket lines up with the tapped hole in the floor plate.
 10. Fasten securely by tightening one of the red knobs (E) (Figure 13).
 11. Position the rail assembly (F) on the support bracket (G) (Figure 14).
 12. Install the four Nylock hex nuts (H) and four 5/16–18 x 2 in. socket head cap screws (J) to attach the rail clamp (K) to the rail assembly (Figure 14).

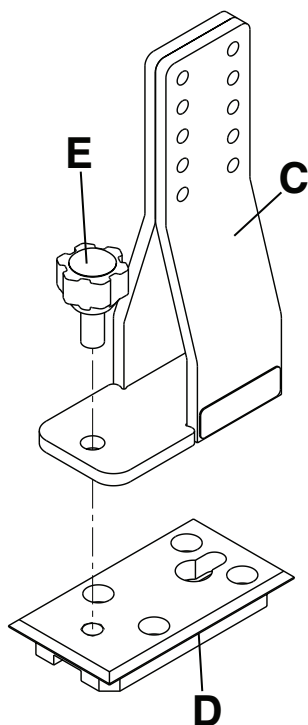


Figure 13 – Fasten the rail support bracket

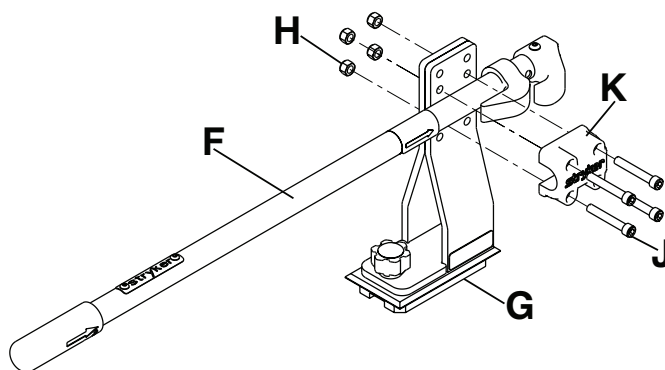


Figure 14 – Attach rail clamp to rail assembly

Installing the wall plate

The Stryker cot fastener system for the wall plate mounting model is compatible only with cots which conform to the wall plate mounting installation specifications.

To position the antler floor mounting plates:

1. Determine the desired position of the cot inside the vehicle to allow for proper clearance around the cot.

Note - Federal ambulance specifications regarding that aisle width and attendant seating may affect positioning of the mounting brackets. If specifications do not apply, the installer should be certain that there is adequate clearance for proper patient access, traction splint projection, rear door closure, etc.

- Using the dimensions shown in Figure 15, locate and drill the points where the floor plates will attach.

Note - When installing the wall plate for the Stryker Model 6371 cot fastener with the long rail assembly option (6362-021-000), measure 33 in. for the horizontal dimension and 4 1/16 in. for the vertical dimension. The Stryker Model 6371 cot fastener with the long rail assembly option is only compatible with the extended head section assembly (9996-390-200).

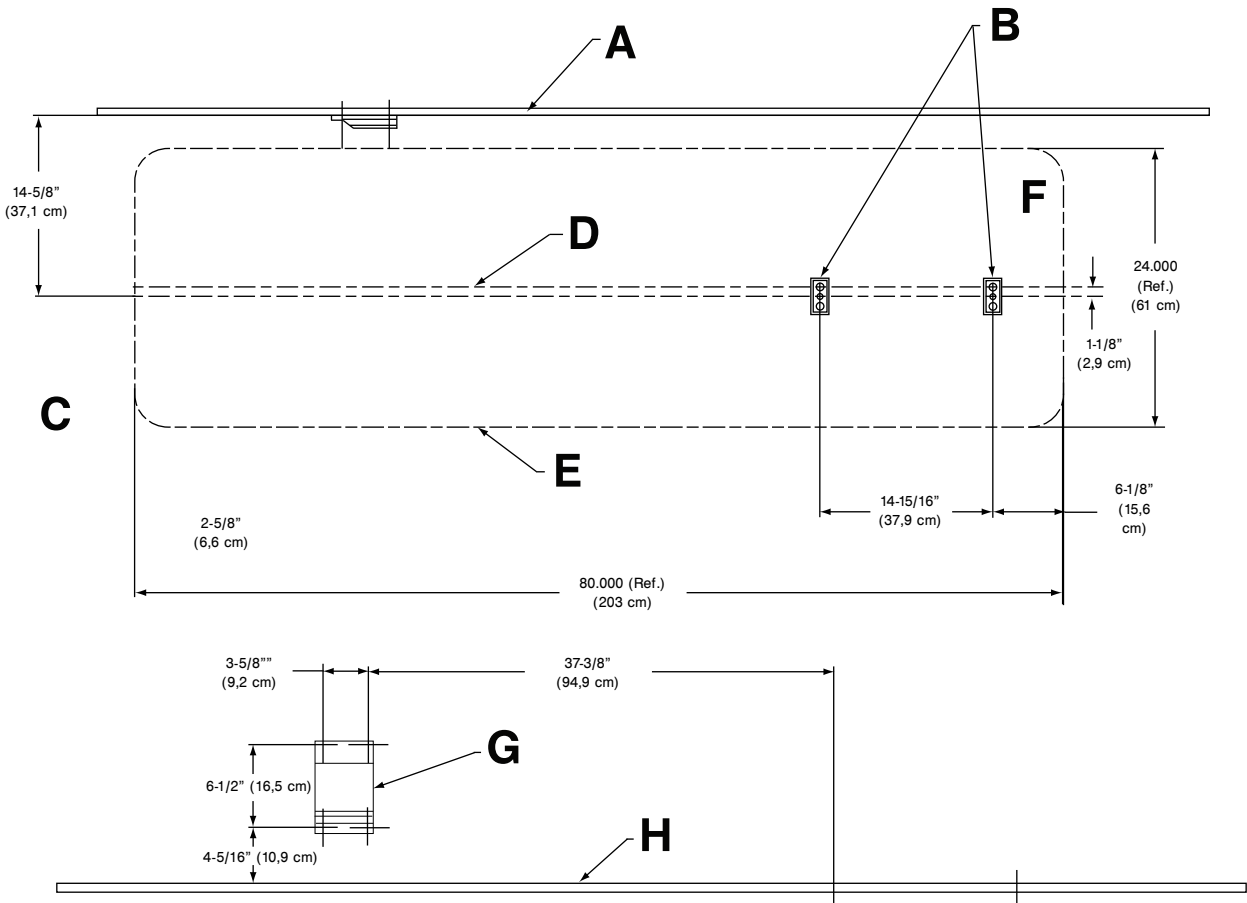


Figure 15 – Wall plate installation locations

A	Wall of vehicle	E	Cot perimeter
B	Antler floor plates	F	Cot head end
C	Rear of ambulance	G	Wall mounting bracket
D	Cot center line	H	Floor of vehicle

- Cut two 1 in. x 2-1/2 in. x 9/16 in. deep recessed openings (A) into the floor centered over the locating holes (Figure 16).
- Using two 3/8 in. diameter socket head cap screws (B) (not supplied), preferably grade 8, anchor each floor plate (C) into the recessed openings with the counter-bored holes facing up (Figure 17).

Note - A steel backing plate (or equivalent) (D) (not supplied) is required for added support (Figure 17).

WARNING - Do not use screws smaller than the 3/8 in. diameter specified to anchor the floor plates.

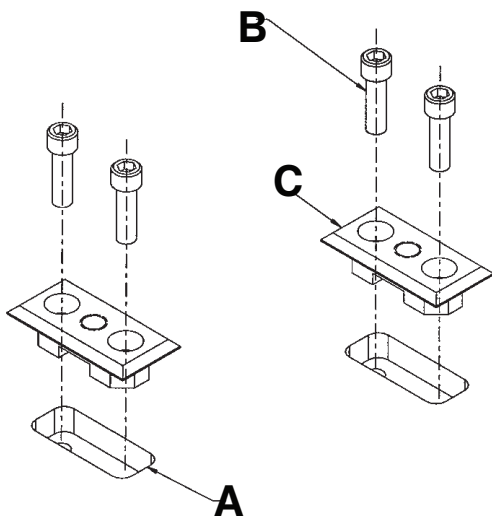


Figure 16 – Cut recessed openings over locating holes

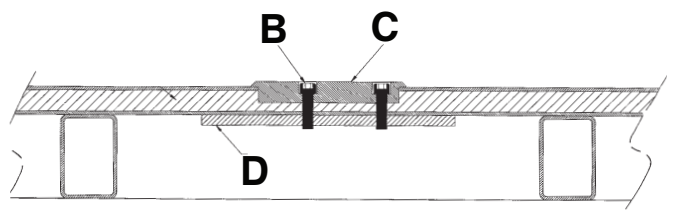


Figure 17 – Anchor wall plate into recessed openings

5. Using the dimensions shown in Figure 15, locate and drill the four points where the rail wall mounting bracket will attach.
6. Using four 5/16 in. diameter socket head cap screws (E) (not supplied), anchor the wall bracket (F) through the 11/32 in. diameter holes (G) to the wall (H) (Figure 18 and Figure 19).

Note - A steel backing plate (or equivalent) (J) (not supplied) is required for added support (Figure 18).

WARNING - Do not use a screw smaller than the 5/16 in. diameter specified to anchor the wall plate.

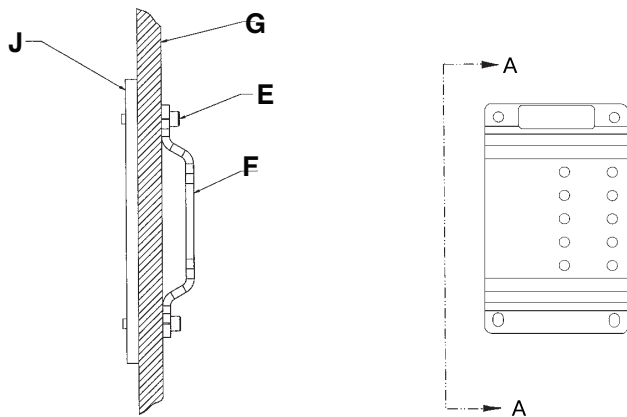


Figure 18 – Wall plate bracket and steel backing

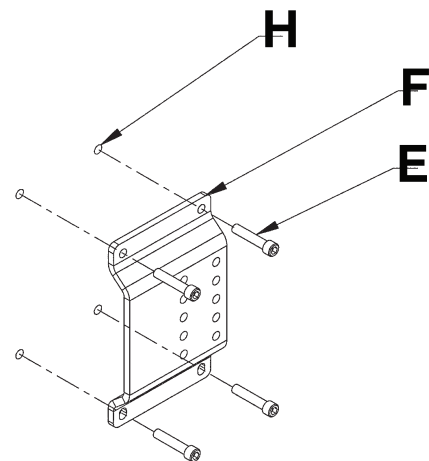


Figure 19 – Wall plate bracket and locating points

7. Position the antler over the floor plates and fasten the antler (A) with the red knobs (B) (Figure 20).

Note

- Use the additional mounting holes in the antler bracket to position the antler for the Model 6370/6377/6378 floor mounted cot fastener systems.
- The red knobs that fasten the antler assembly to the patient compartment floor plate are not compatible with the universal floor plate. See the Universal Floor Plate Installation Instructions for floor plate installation.

8. Position the rail assembly (C) on the wall mounting bracket (D) (Figure 21).

9. Install the four Nylock hex nuts (E) and four 5/16-18 x 2 in. socket head cap screws (F) to attach the rail clamp (G) to the rail assembly (Figure 21).

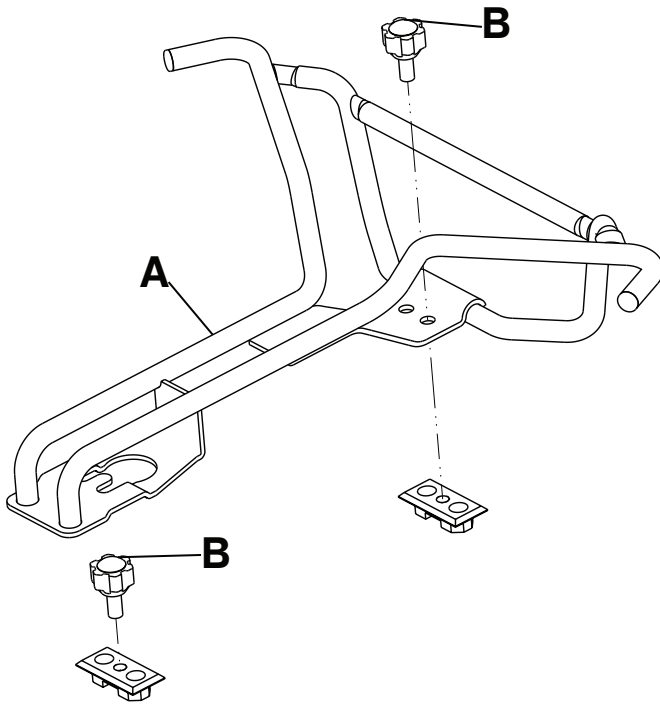


Figure 20 – Position and fasten antler over the floor plates

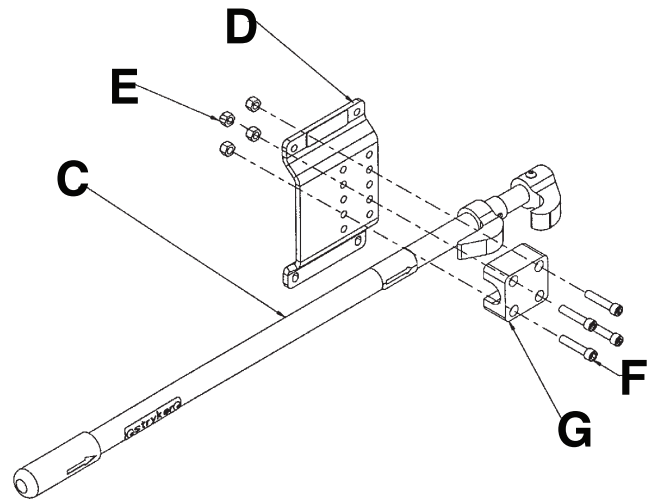


Figure 21 – Attach the rail clamp to rail assembly

Installation checklist

Follow this checklist with a Stryker Ambulance Cot Fastener Model 6370/6371/6377/6378/6391/6393 compatible cot.

- _____ Make sure that you do not have any unused components after installation. Your Stryker Ambulance Cot Fastener does not ship with any extra components. If you have any unused components after installation, call Stryker service.
- _____ Visually check that all bolts and screws are properly tightened with no signs of protruding or missing fasteners.
- _____ Lift the vehicle bumper to the raised position, if equipped.
- _____ Load the compatible cot into the cot fastener (see *Cot compatibility* (page 6)).
- _____ Pull to remove the cot from the vehicle patient compartment. Make sure that the cot safety bar connects with the vehicle safety hook before you remove the cot from the vehicle patient compartment.
- _____ Make sure that the cot is locked into the cot fastener by pulling in and out and side to side on the foot end of the cot.
- _____ Test the cot for proper operation (see *Testing the cot fastener* (page 23)).

Product serial number:			
Installed by:		Date:	
Inspected by:		Date:	

Note - Maintain a copy of this record for at least seven years.

Operation

Mass casualty incident planning

You must use the **Power-LOAD** system, 6370 antler assembly (6370-230-038), or 6378 antler assembly (6378-030-038) for mass casualty incidents.

WARNING

- Do not allow the rail clamp to overlap the red adjustment limit label on the rail tube. To prevent the rail jaws from releasing the cot frame, the space between the rail clamp and the rail stationary jaw must never exceed 1 in. (2.5 cm).
 - Do not use hand or fingers to press the release button when the rail jaws are open. The rail clamp fastener closes with a strong spring action.
-

The mass casualty cot fasteners include a rail assembly for wall or floor mount. You should store this rail assembly in a cabinet in case of emergency for quick attachment in the vehicle patient compartment.

See Figure 22.

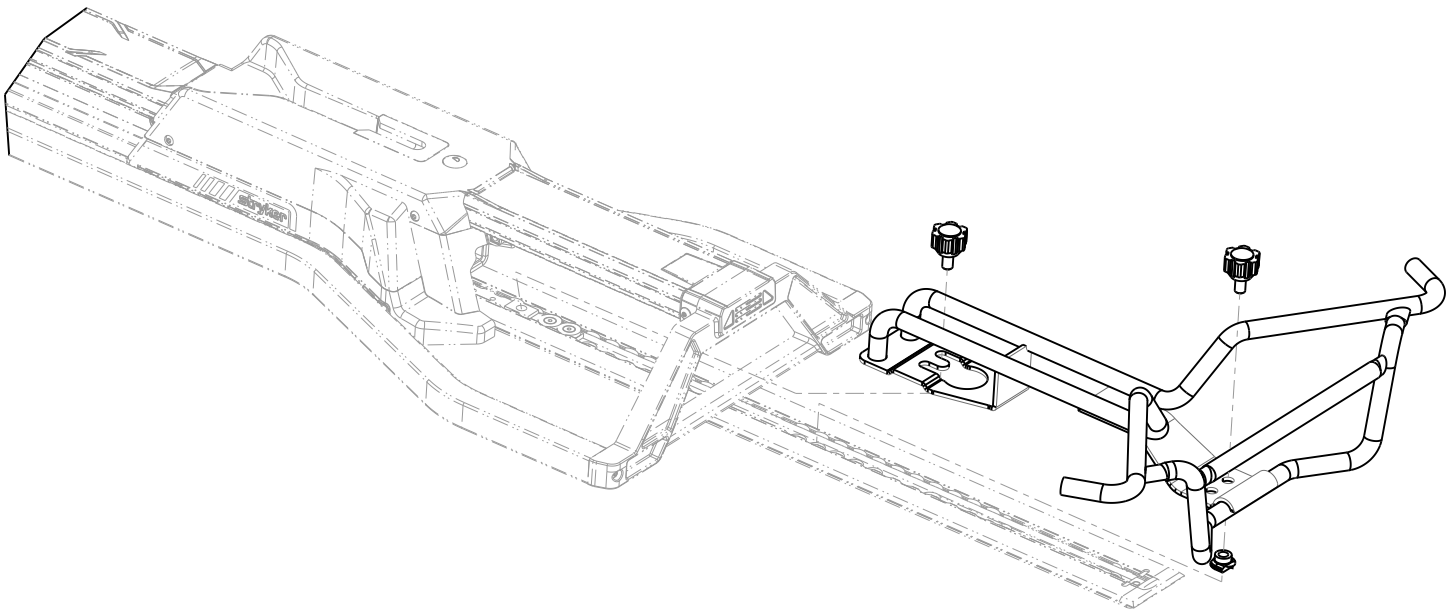


Figure 22 – Performance-LOAD installation

Adjusting the rail assembly

Adjustment of the rail assembly may be required to compensate for slight variation in the position of the cot post.

WARNING - Do not allow the rail clamp to overlap the red adjustment limit label on the rail tube. To prevent the rail jaws from releasing the cot frame, the space between the rail clamp and the rail stationary jaw must never exceed 1 in. (2.5 cm).

To vertically adjust the rail assembly (Figure 23):

1. Remove the rail clamp (A) and rail assembly (B) from the existing mounting holes.
2. Move the rail clamp and rail assembly to the set of holes that align the clamp jaws (C) with the cot post.
3. Position the rail assembly front to back. Adjustment is limited to 1/2 in. front to back or 1 in. total movement.

Note - Do not overlap the adjustment limit label (D) on the rail assembly.

4. When adjustment is complete, rotate the rail assembly so the jaws are parallel with the floor.
5. Tighten the mounting screws until the rail clamp is drawn firmly against the support bracket.

6. Push the rail handle (E) forward until the release button engages and the jaws lock in the open position.
7. Guide the cot into the fastener at a slight angle by connecting the loading wheels with the antler one at a time (Figure 24).

WARNING - Do not use hand or fingers to press the release button when the rail jaws are open. The rail clamp fastener closes with a strong spring action.

8. Move the foot end of the cot sideways until the cot post enters the rail jaws and presses the release button. The rail jaws will close, locking the cot securely in position.

Note - Cot bedding may prevent attendants from seeing the rail jaws close around the cot post. Make sure that the cot is locked into the fastener by firmly pulling side to side on the foot end of the cot.

9. Use one hand to push the rail handle forward far enough for the jaws to release the cot post. With the other hand, grasp the cot and roll it away from the rail.

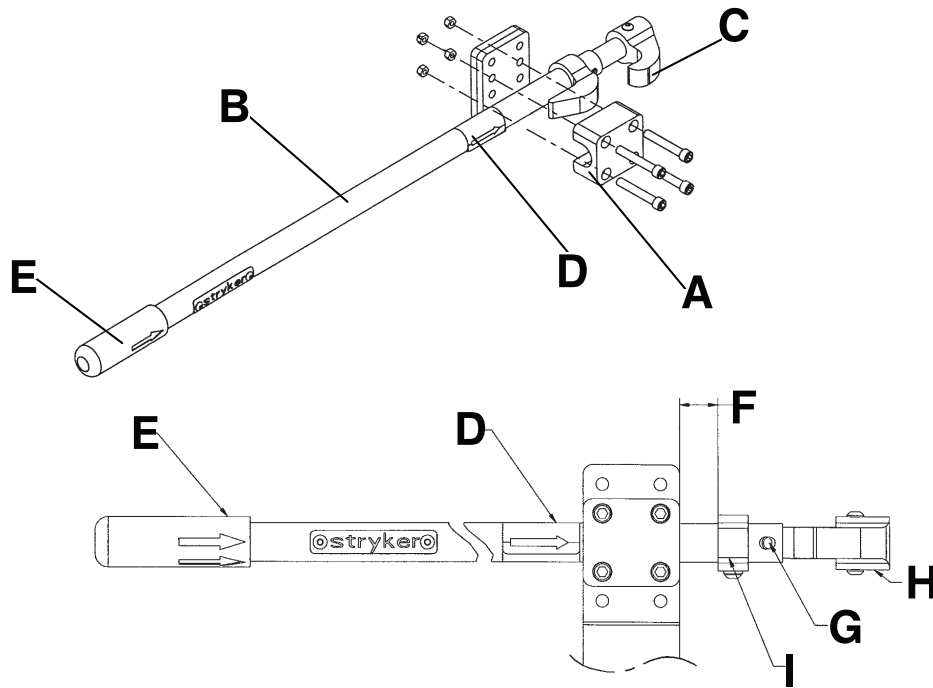


Figure 23 – Adjusting the rail assembly

A	Rail clamp
B	Rail assembly
C	Clamp jaws
D	Adjustment limit label
E	Rail handle
F	1" maximum adjustment
G	Release button
H	Moveable jaw
I	Stationary jaw

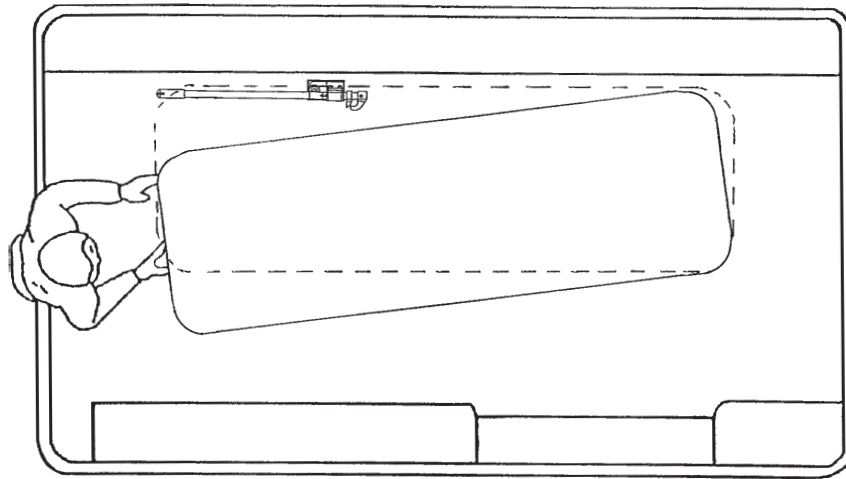


Figure 24 – Guiding the cot into the fastener

Testing the cot fastener

WARNING - Always test the fastener using AMD Standard 004 as a minimum. Improper testing can result in injury.

To test the fastener:

1. Guide the cot into the cot fastener.
2. Make sure that the antler connects with the head end loading wheels of the cot.
3. Make sure that the rail clamp jaws are secure to the center of the cot post.

Note - The fastener may be put into service after successfully passing steps two and three.

Accessories and parts

These parts are currently available for purchase. Call Stryker Customer Service: 1-800-327-0770 for availability and pricing.

Name	Number
Rail assembly	6360-020-000
Rail assembly, short	6362-020-000
Rail assembly, long **	6362-021-000

Note - The Stryker Model 6371 cot fastener with the long rail assembly option (6362-021-000) is only compatible with the extended head section assembly (9996-390-200).

Cleaning

Suggested cleaners

In general, when used in concentrations recommended by the manufacturer, either phenolic type or quaternary (excluding **Virex® TB**) type disinfectants can be used. Iodophor type disinfectants are not recommended for use because staining may occur.

Suggested cleaners include:

- Quaternary cleaners (active ingredient - ammonium chloride)
- Phenolic cleaners (active ingredient - o-phenylphenol)
- Chlorinated bleach solution (5.25% - less than 1 part bleach to 100 parts water)

Avoid oversaturation. Do not allow the product to stay wet longer than the chemical manufacturer's guidelines for proper disinfecting.

Note

- Failure to follow the above directions when using these types of cleaners may void this product's warranty.
- Always wipe the product with clean water and dry after cleaning. Some cleaning products are corrosive in nature and may cause damage to the product. Failure to properly rinse and dry the product leaves a corrosive residue on the surface of the product and may cause premature corrosion of critical components.

Preventive maintenance

The following schedule is a general guide to maintenance. Factors such as weather, terrain, geographical location, and individual usage will alter the required maintenance schedule. If you are unsure how to perform these checks, contact your Stryker Service Technician. If you are in doubt as to what intervals to follow in maintaining your product, consult your Stryker Service Technician. Check each routine and replace worn parts if necessary.

Routine	Every			
	1 month	3 months	6 months	12 months
Cot and cot fastener fit and function				X
All fasteners are secure		X		



Stryker Medical
3800 E. Centre Avenue
Portage, MI 49002
USA