

HARD

The nations #1 manufacturer of hospital cribs

SPRINGFIELD CRIB SERVICE MANUAL



MODELS 1935, 1943, 1955 & 1975



FDA



HARD

1-800-873-4273 ~ parts@hardmfg.com

TABLE OF CONTENTS

General Information.....	4
Side Rail Operation & Safety.....	5
Curtain Lift Bar Operation & Safety.....	6
Crank Handle Usage.....	7
Mattress Platform Diagram & Parts List.....	8
Gatch Extender Parts Identification.....	10
Gatch Extender Parts List.....	11
Gatch Extender Installation Instructions.....	12
Side Rail Assembly Diagram.....	13
Side Rail Assembly Parts List.....	14
Side Curtain Assembly & Parts List.....	15
Head End Assembly Diagram.....	16
Head End Assembly Parts List.....	17
Foot End Assembly Diagram & Parts List.....	18
Slide Rod Assembly Diagram & Parts List.....	19
Slide Rod or Side Rail Replacement Instructions.....	20
Trigger Assembly for Rails or Johns Hopkins Handle Replacement.....	22
Lift Bar Trigger Replacement Instructions.....	24
Crank Handle Assembly Replacement.....	25
Vinyl Top Cover Parts List & Hardware Identification.....	27
Vinyl Top Cover Installation Instructions.....	28
*1906 IV Pole Diagram.....	30
*1906 IV Pole Parts List.....	31
*1906 IV Pole Installation Instructions.....	32

TABLE OF CONTENTS CONTINUED

Shelf & Bumpers Parts List.....	34
Shelf & Bumpers Installation or Replacement Instructions.....	35
Casters & Misc Parts List.....	38
Caution Sheet.....	39
Cleaning Instructions for Cribs/Beds & Mattresses.....	40
Preventative Maintenance Guide & Checklist.....	41
Warranty.....	46

GENERAL INFORMATION

- ◆ HARD Manufacturing cribs and youth beds are intended for use by patients up to 150lbs. It is strongly recommended to discourage parents or caregivers from getting into the crib or bed with the patient as it may cause premature wear or damage to various components.
- ◆ The expected service life of all cribs and beds made by Hard Manufacturing is 9 years when preventative maintenance guidelines are followed.
- ◆ HARD Manufacturing recommends the preventative maintenance checklist found at the end of this manual be performed at least once per year on each crib or bed in your facility. Cribs not meeting the criteria listed on the preventative maintenance checklist should be removed from service until they can be repaired as per the recommended guidelines.
- ◆ HARD Manufacturing will support parts on our cribs and beds for up to 12 years from the date of manufacture as long as we still make the part or can obtain it from our vendors.
- ◆ Cleaning instructions for all HARD Manufacturing cribs and beds can be found at the end of this manual. ***Failure to follow the proper cleaning instructions can result in premature rust and corrosion of the parts on your cribs.***

To request a quote on replacement parts- please have either the serial # from the silver sticker located on the mattress platform, or the crib or bed model # and date of manufacture from the sticker on the bottom left side of the foot end available. Contact info is as follows:

Parts Manager
800-873-4273 x216
parts@hardmfg.com

Please email or fax all parts orders to 716-896-2579 or parts@hardmfg.com. If you do not receive an order confirmation within one (1) business day, please resend the order until a confirmation is received.

Confidential document- For customer/end user only.

SIDE RAIL OPERATION & SAFETY

Crib rails are raised and lowered with a Johns Hopkins Handle.



The side rail or end rails have “trigger” mechanisms that must lock into place to hold up the rail safely. The red tips of the triggers must be securely seated in the notches of the slide rods on both ends, and you should barely be able to see the red tip if at all. Grasp the rail and tug to be certain the rail is in place firmly and properly.

To prolong the life of the trigger assembly in the side rail, continue to squeeze the trigger mechanism as you lower the rail to the desired height and not release until that time. Letting the red tips of the trigger mechanism drag up and down the slide rods by releasing the trigger mechanism too early will cause the trigger assembly to wear prematurely and break.

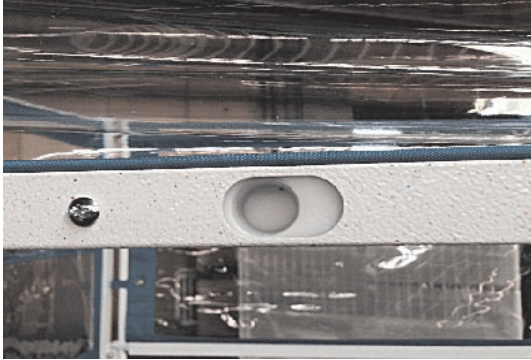


*****If the trigger mechanism for the side rail fails to lock into place properly, remove the crib from service until the mechanism can be replaced.*****

CURTAIN LIFT BAR OPERATION & SAFETY

****To avoid risk of injury when operating either a crib or bed with vinyl curtains, it is essential that both the curtain lift bars or the side/end rails be securely locked in place when raising or lowering either of those parts.****

Side Curtain Lift Bar



The curtain lift bars are raised using 2 finger tip releases which are on each side of the lift bar.

When raising and lowering the lift bar, make sure that the red tips of the trigger mechanisms securely lock into place in the notches on both sides of the slide rods. You should barely be able to see any of the red tip of the trigger mechanism. There should also be an audible click on both ends, and if you grasp the lift bar and tug, it should not move if it is correctly and securely latched.



*****If one of the trigger mechanisms for the lift bar fails to lock into place properly, remove the crib or bed from service until the mechanism can be replaced.*****

CRANK HANDLE USAGE

The Head Crank Handle

Springfield Cribs are equipped with a crank handle for head elevation and it is located on the **left side** of the foot end. The head crank handle should be tucked in when not in use to help avoid damage from it hitting or getting caught on other objects when the crib is being moved.

To use the head crank handle, pull it out from its tucked position and turn clockwise to elevate the head section of the crib. The head section on the Springfield Crib will articulate to approximately 35 degrees, or **17 turns** of the crank handle.

NOTE: The head section of the crib will not articulate higher than the stated 30 degrees. The crank handle will continue to turn after 14 revolutions, however it will become noticeably more difficult. Continued cranking will not raise the head of the crib any further, it will only put stress on the crank handle components and eventually cause them to break.

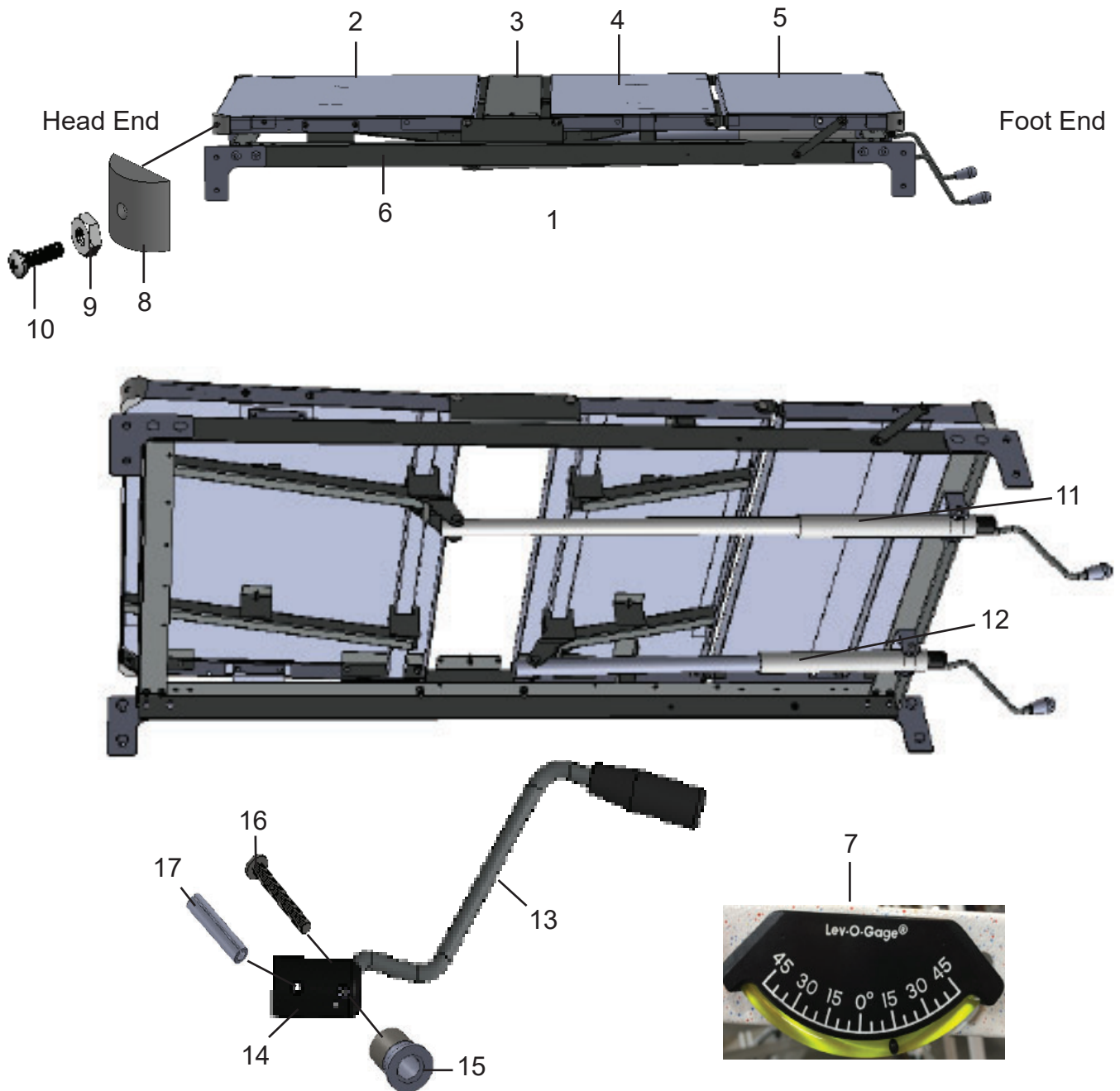
The Foot Crank Handle

The foot crank handle is located on the **right side** of the foot end of the crib. The foot crank handle should be tucked in when not in use to help avoid damage from it hitting or getting caught on other objects when the crib is being moved

To use the foot crank handle, pull it out from its tucked position and turn clockwise to elevate the foot/knee section of the crib. The foot section on the Springfield Cribs will articulate to approximately 15 degrees, or **7 turns** of the crank handle.

NOTE: The foot section of the crib will not articulate higher than the stated 15 degrees. The crank handle will continue to turn after 7 revolutions, however it will become noticeably more difficult. Continued cranking will not raise the foot/knee section of the crib any further, it will only put stress on the crank handle components and eventually cause them to break.

MATTRESS PLATFORM DIAGRAM & PARTS LIST



#	Part Description	Part #	Notes
1	Mattress Platform Assembly-1935	91175	Complete mattress platform with all elevating assemblies and Gatch Extender.
	Mattress Platform Assembly-1943	91273	
	Mattress Platform Assembly-1955	91269	
	Mattress Platform Assembly-1975	91268	

Note: Platform Assemblies listed are for Gatch platforms only. If your crib has a Gatch/Trendelenburg platform please contact us for part numbers.

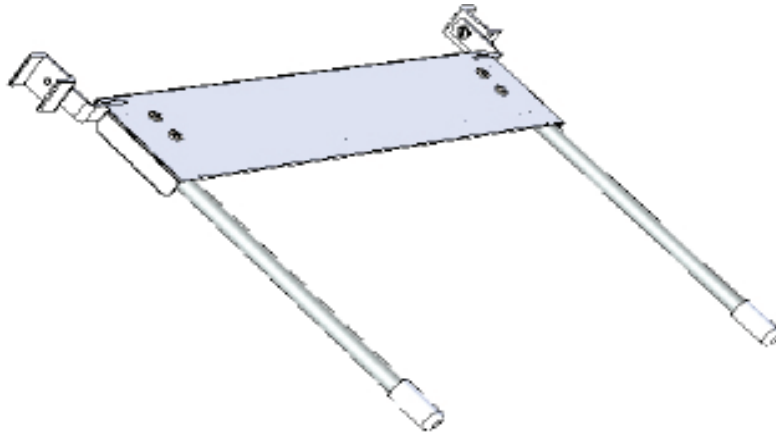
Parts list continues on the next page....

MATTRESS PLATFORM PARTS LIST CONTINUED

#	Part Description	Part #	Notes
1	Head Pan Assembly- 1935	89715	
	Head Pan Assembly- 1943	89715	
	Head Pan Assembly- 1955	89705	
	Head Pan Assembly- 1975	89712	
2	Support Plate- 1935 (not shown)	12150	
3	Center Seat Pan- 1943	12335	
	Center Seat Pan- 1955, 1975	12334	
4	Thigh Pan Assembly- 1935	89717	
	Thigh Pan Assembly- 1943	89717	
	Thigh Pan Assembly- 1955	89706	
	Thigh Pan Assembly- 1975	89706	
5	Foot Pan Assembly- 1935	89716	
	Foot Pan Assembly- 1943	89716	
	Foot Pan Assembly- 1955	89707	
	Foot Pan Assembly- 1975	89713	
6	Bottom Frame Assembly- 1935	81469	
	Bottom Frame Assembly- 1943	81042	
	Bottom Frame Assembly- 1955	81404	
	Bottom Frame Assembly- 1975	81765	
7	Tilt Indicator	63237	Indicates degree of elevation
8	Corner Cover	11558	
9	Hex Nut 10-32	63402	For Corner Covers
10	Screw 10-32x3/4"	62048	
11	Head Elevating Assembly- 1935	81395	Entire shaft for head lift mechanism including the crank handle.
	Head Elevating Assembly- 1943	81096	
	Head Elevating Assembly- 1955	81096	
	Head Elevating Assembly- 1975	81133	
12	Foot Elevating Assembly- 1935	89854	Entire shaft for foot lift mechanism including the crank handle.
	Foot Elevating Assembly- 1943	89886	
	Foot Elevating Assembly- 1955	89886	
	Foot Elevating Assembly- 1975	89848	
13	Crank Handle Assembly	72113	Complete assembly for head or foot
14	Black Knob for Crank Handle	22208	Crank handle components available in hardware bag 72116
15	Brass Insert	60359	
16	Screw 8-32x1-1/4"	63885	
17	Spring Pin 1/4x1-1/8"	60323	

GATCH EXTENDER PARTS IDENTIFICATION

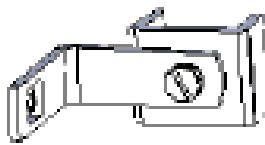
The Gatch Extender is a metal plate that extends outwards as the head of the crib is raised to close the gap on the head end and help prevent potential entrapment hazards.



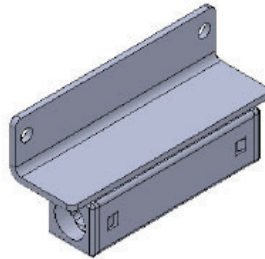
Components of the Gatch Extender:



#3- Extender Plate



#5- Bracket Assembly



#4- Sleeve Assembly



#11- Extender Caplug



#9- 1/4-20x5/8" Screw



#11- Washer



#10- 1/4-20x5/8" Screw



#6- 1/4-20x1/2 Lock Nut



#8- 1/4-20x1/2" Bolt

#2- Left
Gatch Weld
Assy

#2- Right
Gatch Weld
Assy



GATCH EXTENDER PARTS LIST

#	Part Description	Part #	Qty#	Notes
1	Gatch Extender Assembly- 30" wide crib	93260	1	Complete assembly with all hardware. Specify color when ordering
	Gatch Extender Assembly- 36" wide crib	93261	1	
2	Gatch Weld Assembly- Left	89803	1	Newer version- Specify color when ordering
	Gatch Weld Assembly- Right	89804	1	
3	Extender Plate- 30" wide crib	12290	1	Specify color when ordering
	Extender Plate- 36" wide crib	12291	1	
4	Sleeve Assembly	81367	2	The left and right Gatch weld assemblies slide into this part which is mounted on the underside of the head pan.
5	Bracket Assembly Hardware Bag	72045	1 pair	Brackets which glide up and down head end corner posts. Includes #7 & 8 to attach to weld assemblies
6	1/4-20 Lock Nut	63413	8	4 used on sleeve assemblies, 4 used to attach extender plate to Gatch weld assemblies
7	Washer	63443	2	Used to attach the bracket assembly to the Gatch weld assemblies
8	1/4-20x1/2" Bolt	60128	2	
9	1/4-20x5/8" Screw	60157	4	Used to attach extender plate to weld assemblies
10	1/4-20x5/8" Screw	63392	4	Used to fasten sleeve assemblies to the head pan
11	Extender Caplug	63236	2	Cover for the open end of the Gatch weld assemblies

****Note- On older Springfield Crib models, the Extender Plate was larger and the tabs on the left and right weld assemblies were longer than the current version pictured in this document. Please call or email for pricing on those older components.***

GATCH EXTENDER INSTALLATION INSTRUCTIONS

1. To begin installation of a complete Gatch Extender Assembly or replace parts on an existing crib, lower the gate on the head end (for new cribs, install the Gatch Extender Assembly prior to installing the gate) and use the head crank handle to elevate the head section to its maximum height.

2. Insert the left and right Gatch weld assemblies (#2) into the sleeve assemblies (#4) facing each other as shown. The smooth side of the weld assemblies should be facing upwards.

Sleeve Assembly
attached to
underside of head
pan



Left and right
Gatch weld
assemblies
facing each
other

3. Add bracket assemblies (#5) to the crib posts, and line them up with the tops of the left and right Gatch weld assemblies as shown, and fasten the two parts together using a bolt (#8) and washer (#7).



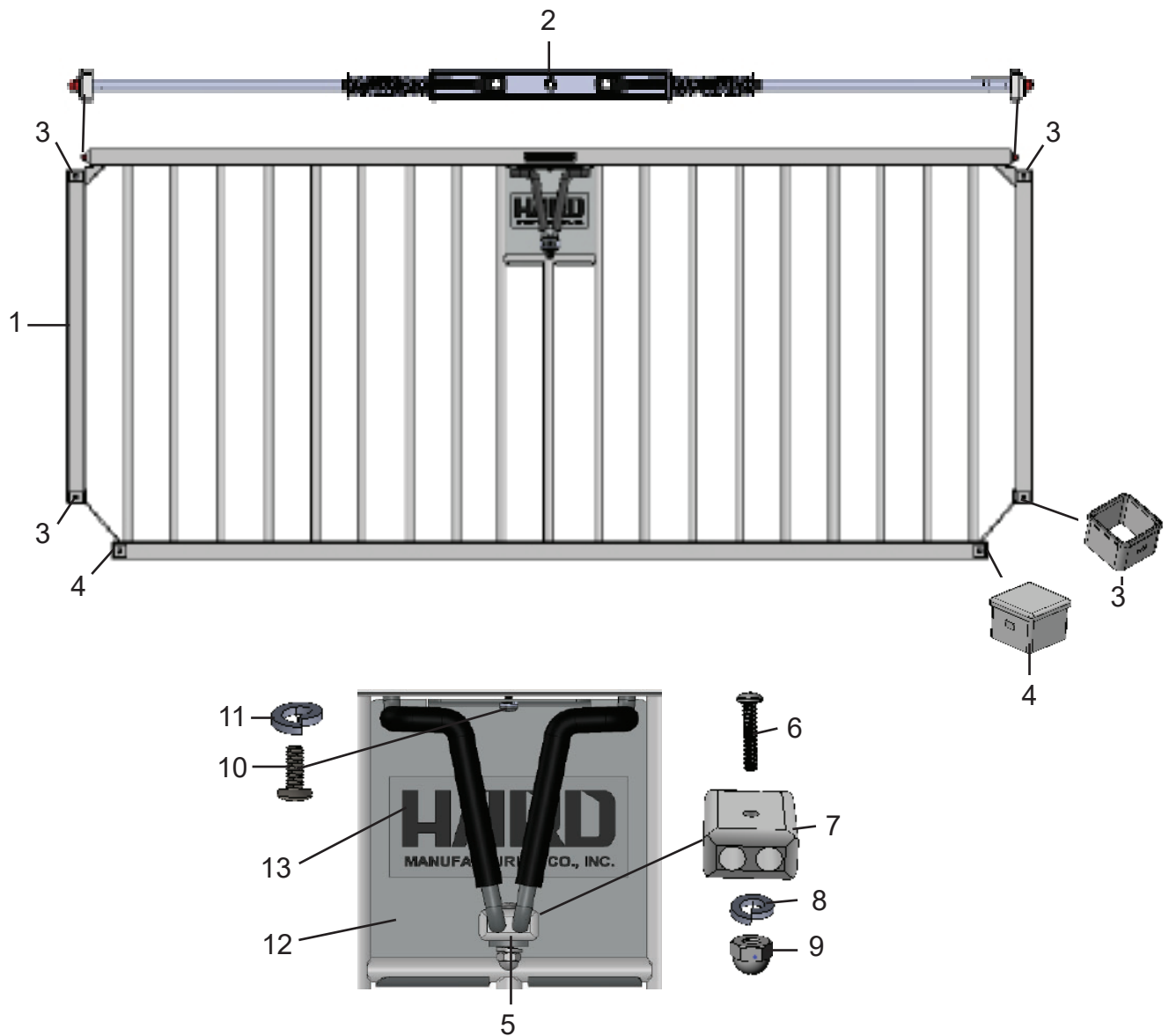
4. Set extender plate on the weld assemblies as shown and line up holes in the extender plate (#3) with the holes in the Gatch weld assemblies. Clamp the bracket assemblies to the crib posts to align the plate prior to adding the hardware. Using 4 screws (#9) and 4 nuts (#6), fasten the extender plate to the Gatch weld assemblies.



5. Use the head crank handle to lower the head section 2 turns. Add capplugs (#2) to the end of the left and right Gatch weld assemblies under the pan deck as shown. Installation is complete.



SIDE RAIL ASSEMBLY DIAGRAM



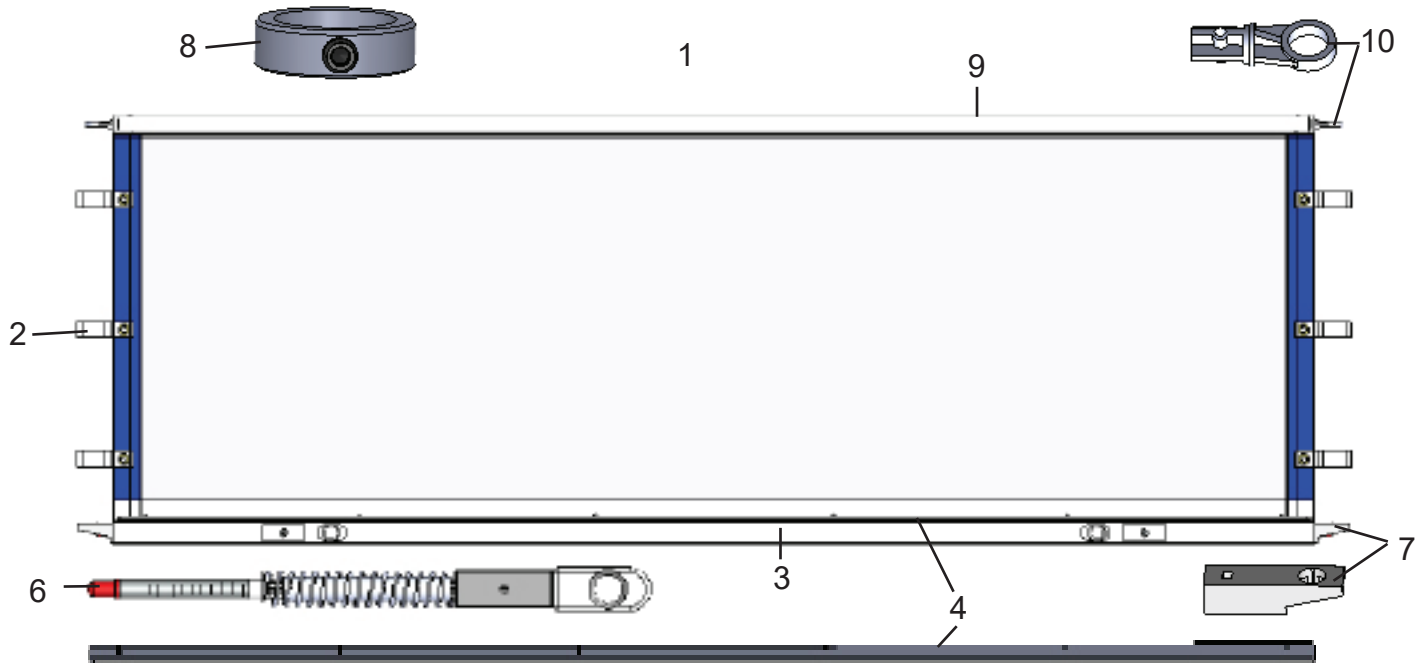
**TO RAISE SIDE
USE TWO HANDS** 15

**TO LOWER SIDE
LIFT THEN SQUEEZE HANDLE** 14

SIDE RAIL ASSEMBLY PARTS LIST

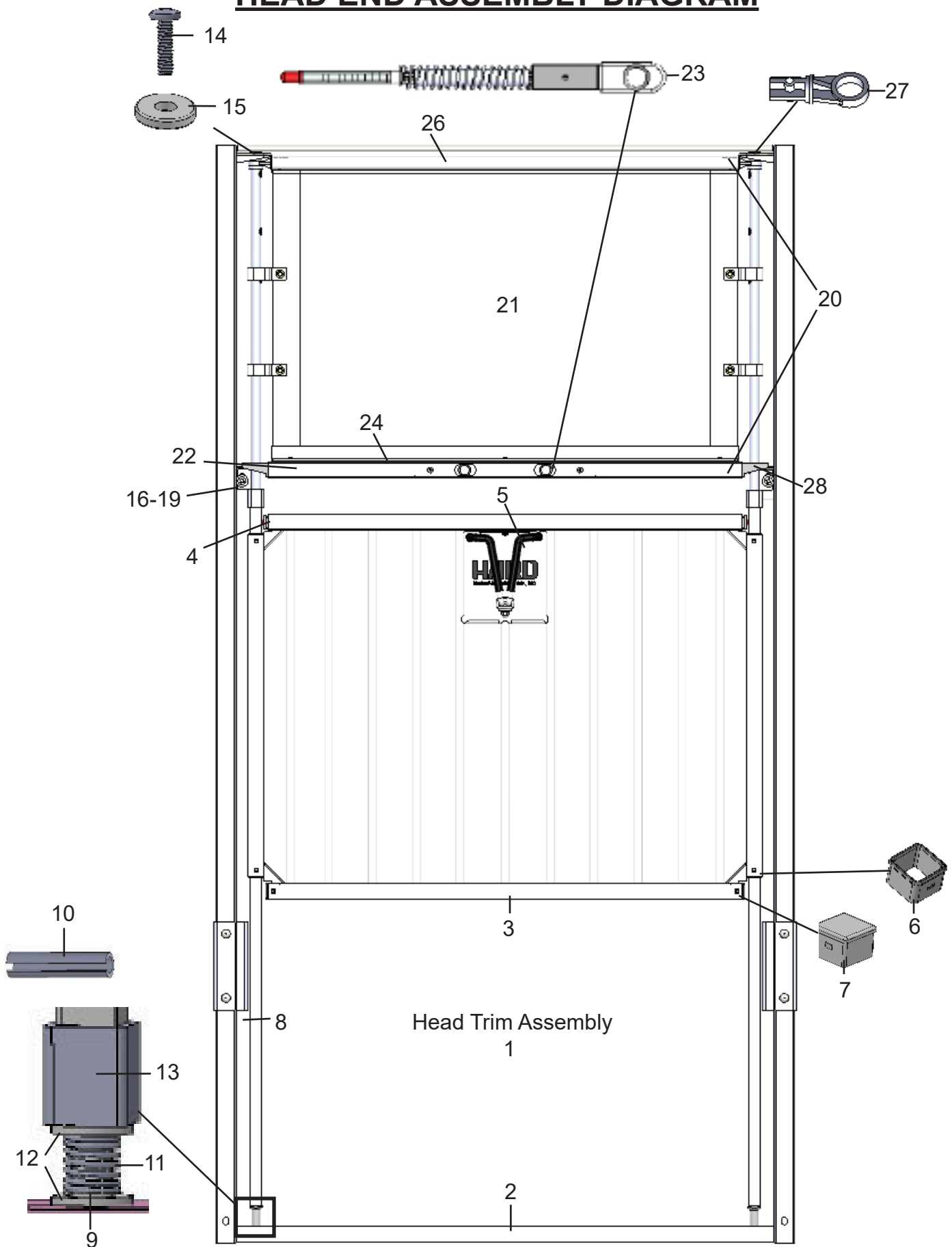
#	Part Description	Part #	Notes
1	Side Trim Assembly- 1935	90451	Complete Side Rail Assembly
	Side Trim Assembly- 1943 & 1955	90222	
	Side Trim Assembly- 1975	90456	
2	Side Trigger Assembly- 1935	89115	One trigger per rail
	Side Trigger Assembly- 1943 & 1955	89117	
	Side Trigger Assembly- 1975	89119	
	Teething Bars- 1935	*1935 TB	Not shown. Set of 3- Protective covering for the tops of the rails.
	Teething Bars- 1943	*1943 TB	
	Teething Bars- 1955	*1955 TB	
	Teething Bars- 1975	*1975 TB	
3	Glide Slide Bushing	11571	Nylon bushing with cutout
4	Bushing	11518	Solid nylon bushing
5	Johns Hopkins Handle Assembly	72115	Complete Handle Assembly (Does not include Shield Plate)
6	Screw 10-32x1 RH PH MS	63375	Components at the bottom of the Johns Hopkins Handle
7	Retainer Block	11525	
8	Split Lockwasher	63453	
9	Acorn Nut C/P 10-32	63411	
10	Screw	60148	Top of Shield Plate
11	Split Washer	63457	
12	Shield Plate Assembly	81216	Plate behind JH Handle (Does not include handle)
13	HARD Sticker	62177	Sticker behind JH Handle Assembly
14	"To Lower Side Lift Then Squeeze" Sticker	63651	Placed above JH Handle
15	"To Raise Side Use Two Hands" Sticker	63650	Placed on either end of the side rail

SIDE CURTAIN ASSEMBLY DIAGRAM & PARTS LIST



#	Part Description	Part #	Notes
1	Side Curtain Assembly- 1935	90381	Includes curtain, lift bar, top curtain rod & all hardware.
	Side Curtain Assembly- 1943, 1955	90531	
	Side Curtain Assembly- 1975	90532	
2	Side Curtain 1935- curtain only	63290	
	Side Curtain 1943, 1955- curtain only	63334	
	Side Curtain 1975- curtain only	63771	
3	Lift Bar- 1935	11413	
	Lift Bar- 1943, 1955	11171	
	Lift Bar- 1975	11176	
4	Lift Bar Retainer-1935	11511	Thin metal bar than pins the curtain to the lift bar.
	Lift Bar Retainer-1943, 1955	11172	
	Lift Bar Retainer-1975	11179	
5	Screw- for lift bar retainer- (Not shown)	62185	For the retainer
6	Lift Bar Trigger 1935	89126	2 triggers needed for each lift bar
	Lift Bar Trigger 1943, 1955	89126	
	Lift Bar Trigger 1975	89127	
7	Lift Bar Glide	11514	White nylon guide for lift bar
8	Stop Ring	81080	Holds up top of curtain
9	Top Curtain Rod Assembly-1935	89201	Curtain rod with end pieces.
	Top Curtain Rod Assembly-1943, 1955	89202	
	Top Curtain Rod Assembly- 1975	89204	
10	End Piece- Curtain Rod	11585	Set of 2 sold in hardware bag 72094
11	Pin- Curtain Rod (Not shown)	11586	

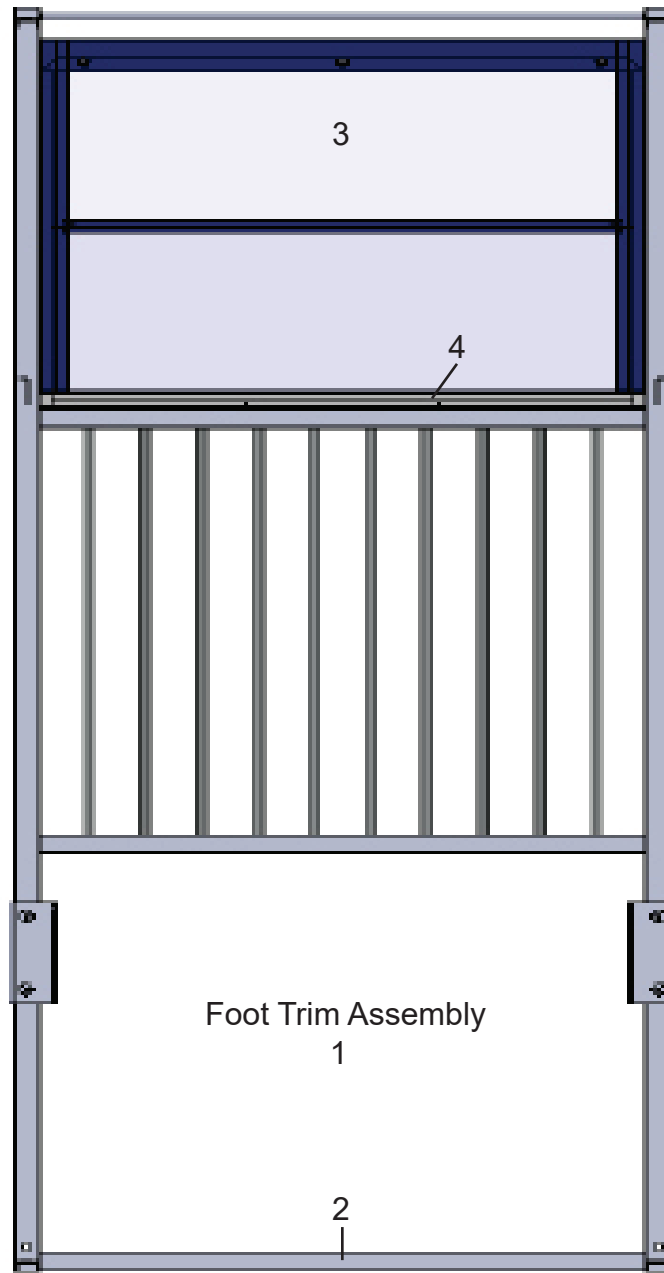
HEAD END ASSEMBLY DIAGRAM



HEAD END ASSEMBLY PARTS LIST

#	Part Description	Part #	Notes
1	Head Trim Assembly- 1935, 1943	90719	Complete Head Assembly
	Head Trim Assembly- 1955, 1975	90727	
2	Head Weld Assembly- 1935, 1943	90254	Outside head end frame only, no slide rods, gate or curtain assembly
	Head Weld Assembly- 1955, 1975	82916	
3	Head Gate Assembly- 1935, 1943	90224	Gate with trigger assembly and bushings
	Head Gate Assembly- 1955, 1975	90221	
4	Trigger Assembly for Gate- 1935, 1943	89267	One per side with Johns Hopkins Handle. See Side Rail Assembly page for diagram
	Trigger Assembly for Gate- 1955, 1975	89132	
5	Johns Hopkins Handle	72115	See Side Rail Assembly for more detail
6	Glide Slide Bushing	11571	
7	Solid Bushing	11518	
8	Slide Rod Assembly	89998	
9	Slide Rod Adaptor	11576	Parts are also available in hardware bag 72080
10	1/8" x 3/4" Spring Pin	63834	
11	Bumper Spring- Crib Ends	63845	
12	Nylon Washer	11545	
13	Plastic spacer	11593	
14	Screw	63392	Parts are for the top of the slide rods.
15	Nylon washer	11556	
16	Screw	63392	Parts are for the lug in the middle of the slide rods. Available in hardware bag 72108
17	Nylon Washer	11556	
18	Lockwasher	63453	
19	Acorn Nut	62068	
20	Head Curtain Assembly- 1935, 1943	90549	Complete curtain assembly including #21-28
	Head Curtain Assembly- 1955, 1975	90551	
21	Head Curtain Only- 1935, 1943	63344	
	Head Curtain Only- 1955, 1975	63286	
22	Lift Bar Head End- 1935, 1943	11323	Lift bar only- lift bar glides, trigger assembly and retaining bar not included.
	Lift Bar Head End- 1955, 1975	11321	
23	Trigger Assembly for Lift Bar- 1935, 1943	89126	Need 2 per side
	Trigger Assembly for Lift Bar	89125	
24	End Curtain Retainer- 1935, 1943	11325	Metal bar that holds the curtain to the lift bar. Screws not included.
	End Curtain Retainer- 1955, 1975	11327	
25	Screw for Retainer (Not shown)	62185	
26	Top Curtain Rod Assembly- 1935, 1943	89198	Includes plastic end pieces
	Top Curtain Rod Assembly- 1955, 1975	89199	
27	Plastic Curtain End Piece- set of 2	72094	
28	Lift Bar Glide	11514	White nylon guide for lift bar

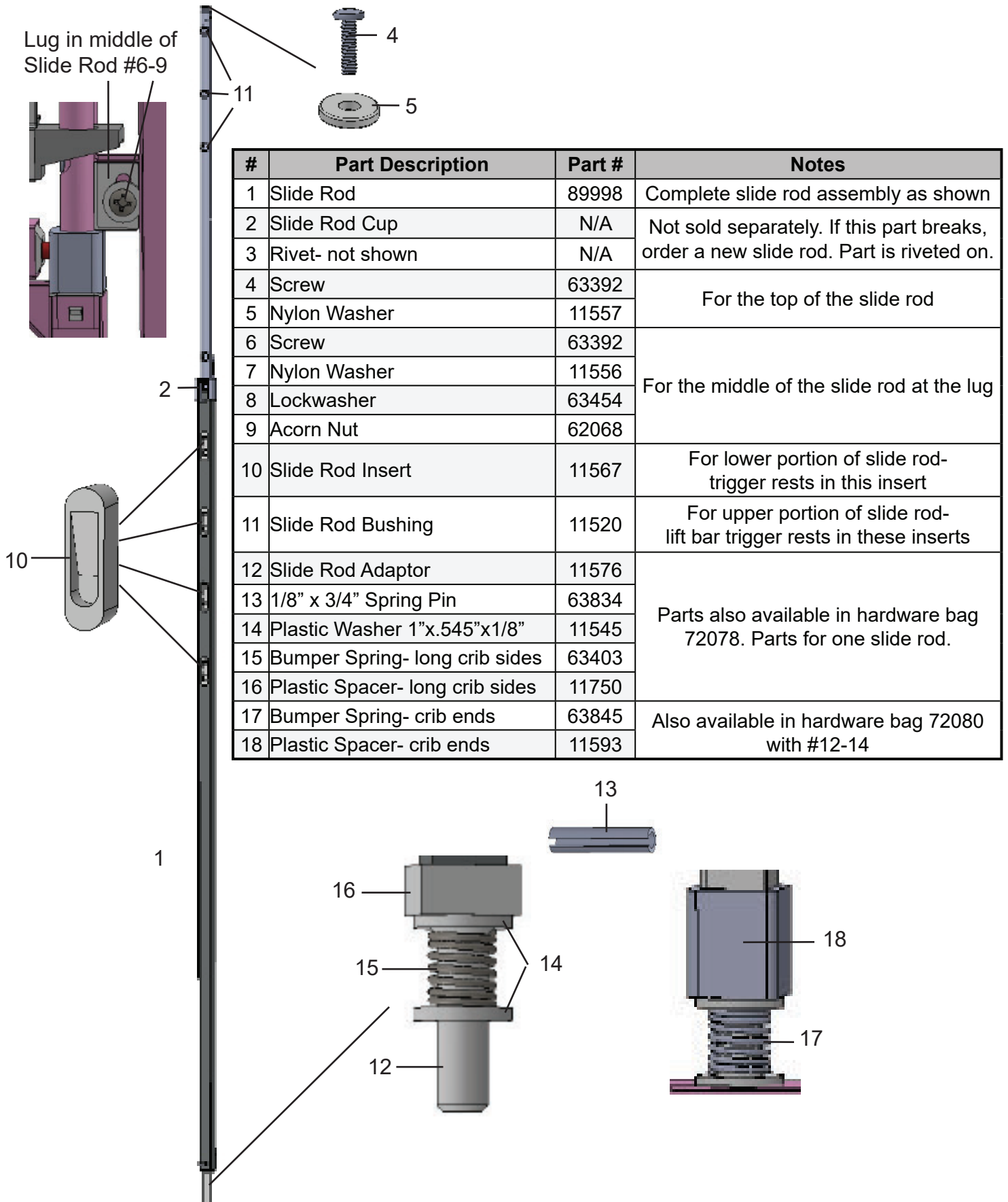
FOOT END ASSEMBLY DIAGRAM & PARTS LIST



#	Part Description	Part #	Notes
1	Foot Trim Assembly- 1915, 1935, 1943	90352	Complete Foot Assembly
	Foot Trim Assembly- 1955 & 1975	90353	
2	Foot Weld Assembly- 1915, 1935, 1943	82914	Outside head end frame only, no curtain assembly
	Foot Weld Assembly- 1955, 1975	82917	
3	Foot Curtain Only- 1915, 1935 & 1943	63340	*Curtain has a chart pocket as a standard feature.
	Foot Curtain Only- 1955 & 1975	63770	
4	End Curtain Retainer- 1915, 1935 & 1943	11173	Metal bar that holds the bottom of the curtain to the crib frame. Screws not included.
	End Curtain Retainer- 1955 & 1975	11132	
5	Screw for Retainer (Not shown)	63386	Not shown

****Note- If your crib was made prior to 2015 or of your foot end curtain does not have a chart pocket, the Foot End Assembly parts listed above do not apply. Please contact us for the correct part numbers.***

SLIDE ROD ASSEMBLY DIAGRAM & PARTS LIST

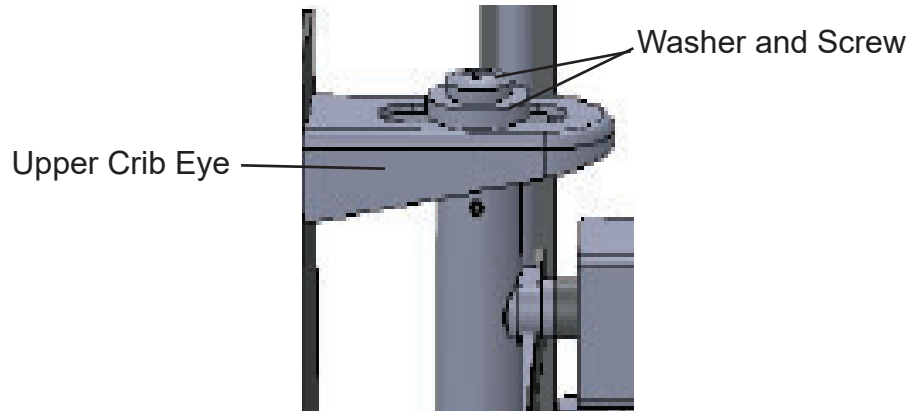


SLIDE ROD OR SIDE RAIL REPLACEMENT

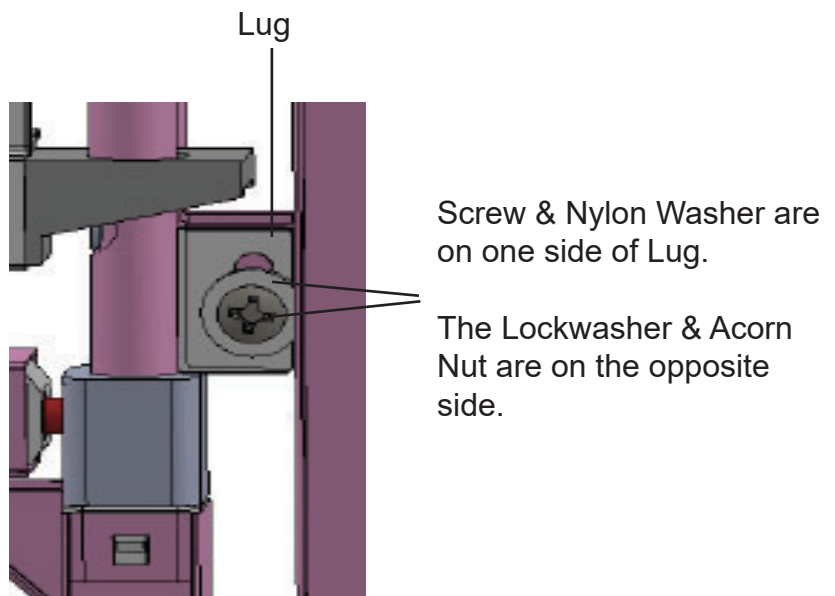
To disassemble the crib and replace a side rail or a slide rod:

****We recommend this be done with 2 people****

1. At the top of one of the Slide Rods, first loosen and remove the screw and washer. Repeat at the opposite side of the rail.



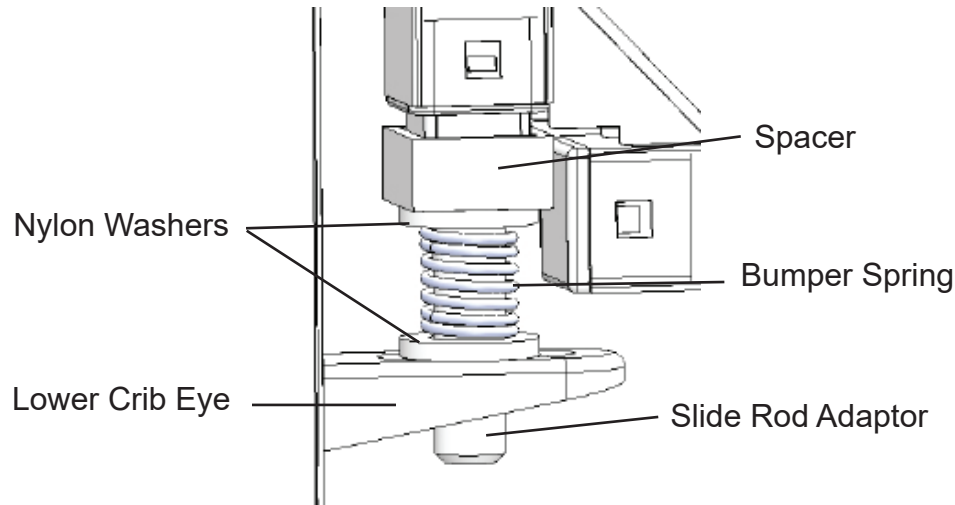
2. Halfway down each slide rod at the metal tab called the lug, remove the screw, nylon washer, lockwasher & acorn nut.



Instructions continued on next page...

SLIDE ROD OR SIDE RAIL REPLACEMENT CONT.

3. Push down on both slide rods until they are clear of the upper crib eye, then lean the entire side assembly outwards. Lift the assembly up and off of the lower crib eyes being careful not to lose any of the small parts at the bottom of the slide rods as the spring, washers and spacer will fall off.



3. Lastly, squeeze the Johns Hopkins handle or the Fingertip Release mechanisms on the rail to disengage the trigger mechanisms while lifting the slide rod(s) up and out of the rail.

Disassembly is now complete.

To reassemble the crib or bed with the new rail or slide rod:

1. Take the rail making sure the Johns Hopkins handle or the Fingertip Release mechanisms are facing outwards and at the top of the rail. Insert the slide rod(s) down into each end of the side rail. Again be sure that one person is squeezing the Johns Hopkins handle or the Fingertip Release mechanism of the new rail to disengage the trigger mechanisms as you do this. Raise the rail up until it is at the highest position and then release the Johns Hopkins handle or Fingertip Release to lock the rail in place.

2. At the bottom of both of the slide rods, put the spacer back on first, then a washer, the bumper spring, and the other washer as shown on the previous page. While holding those parts in place, lift the side assembly up and position it on the lower crib eye.

3. Lean the side assembly in towards the crib and then press down at both ends to get the assembly under upper crib eyes and then release. Reinstall the hardware back on the top of the slide rods. Do not overtighten the screw.

Reassembly is now complete.

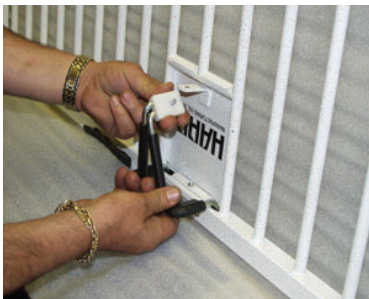
Please be sure all hardware is securely fastened prior to putting the crib or bed back in service.

TRIGGER ASSEMBLY FOR SIDE RAILS OR JOHNS HOPKINS HANDLE REPLACEMENT

It is necessary to remove the rail from the crib prior to the steps listed below. Please follow the instructions on the prior pages to remove the rail and the slide rods prior to beginning the repair. Reference the page for Side Rail Assembly Diagram if needed to identify parts.



1. Turn rail upside down and remove acorn nut and lock washer from the retainer block.



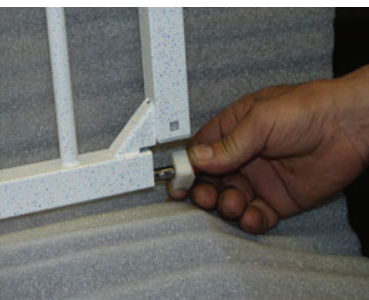
2. Push retainer block down and twist to one side as shown to disengage the screw from the metal bracket on the shield plate.



3. Lift to remove handles from the trigger bracket inside the rail tube. ***If only the Johns Hopkins Handle assembly is being replaced, skip to Step #9 next.***

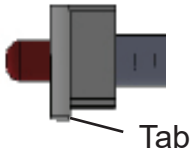


4. Remove screw holding the shield plate and center trigger bracket. Remove the shield plate.



5. Remove the entire trigger assembly by pulling it out one side of the rail. ***If you are unfamiliar with changing a trigger on one of our cribs or beds, note how the components lock together for reassembly.***

SIDE TRIGGER ASSEMBLY OR JOHNS HOPKINS HANDLE REPLACEMENT CONTINUED



6. Slide one half of the trigger assembly barrel 3/4 of the way into the rail making sure the red tip goes in first. The white plastic bushing attached to the red trigger tip has a tab on one edge, be sure it faces downwards as shown. The opposite end of the trigger should be in the upright position as shown to the left.

Opposite end in upright position

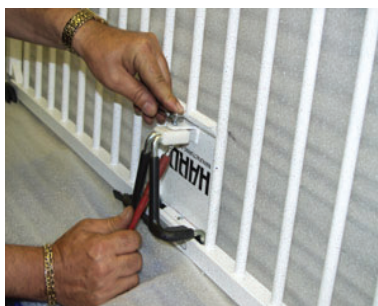
7. Take the black plastic center trigger bracket, and hook it onto the trigger barrel making sure the tabs on the bracket face downwards. Push the completed portion into the rail tube leaving half the bracket exposed for the other trigger barrel. With the red trigger tip now facing the opposite direction, hook the second trigger barrel into the bracket again making sure the tab on the white bushing at the tip is facing downwards. Push the completed assembly fully into the side rail.



8. Prior to putting the shield plate back on, be sure the holes in the black bracket for the triggers line up with the openings in the side rail as well as the hole for the screw. Reinstall the shield plate, and insert the screw to fasten the shield plate and bracket.



9. The trigger barrels are spring loaded, so to line up the hole in the trigger barrel with the hole in the bracket and opening in the rail, push in on the white plastic bushing on the end of the trigger until the holes line up on one side, then insert one half of the handle. Repeat on the other side and insert the second half of the handle.

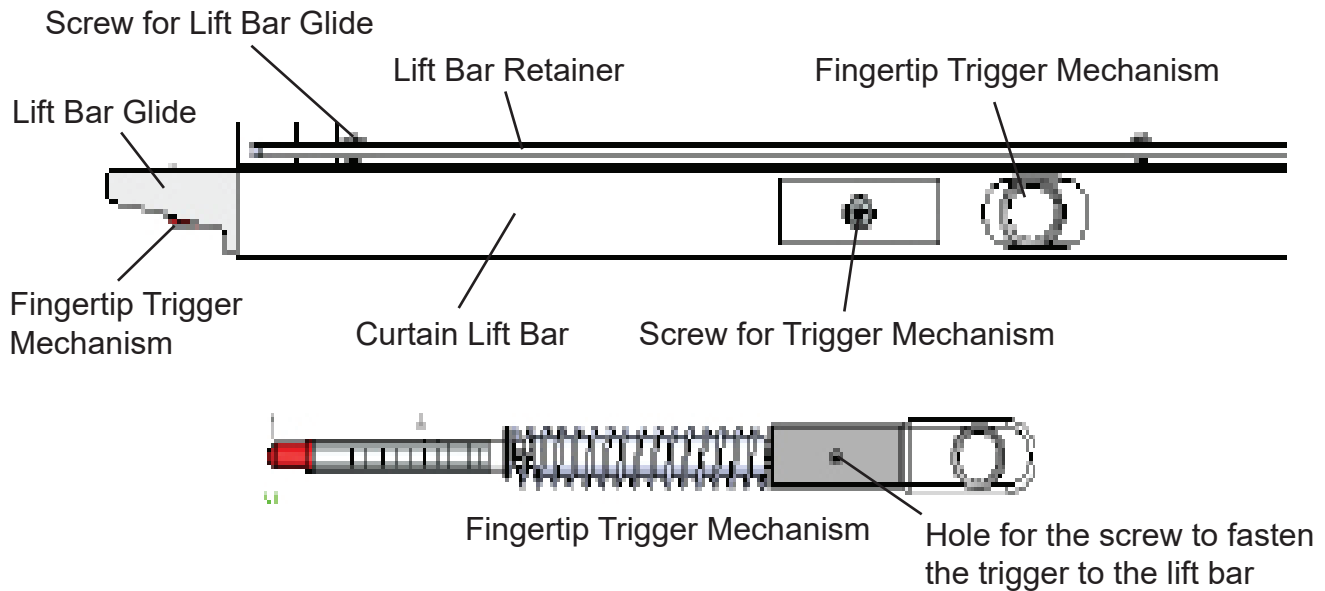


10. To insert screw in the retaining block through the metal bracket in the shield plate, twist the retaining block and screw up into the hole from an angle and secure with lock washer and acorn nut.

Reassembly is now complete.

LIFT BAR TRIGGER REPLACEMENT

It is necessary to remove the side(s) from the crib to change the trigger assembly for the lift bar. Please follow the instructions on pages 23-24 to do so.



Once the curtain assembly has been removed from the crib and the slide rods have been removed from the curtain assembly:

1. Remove the screw that holds in the trigger assembly, as well as the smaller screw for the lift bar glide as illustrated above using a Philips screwdriver.
2. Pull the trigger assembly out of the lift bar along with the lift bar glide.
3. Insert the replacement trigger assembly into the opening at the end of the lift bar glide.
4. Insert both the lift bar glide and the new trigger assembly into the lift bar, making sure that the hole for the screw on the black plastic portion of the trigger assembly is facing outwards (or towards the hole in the lift bar).
5. Refasten the screw for the trigger mechanism as well as the screw for the lift bar glide.

Installation is complete

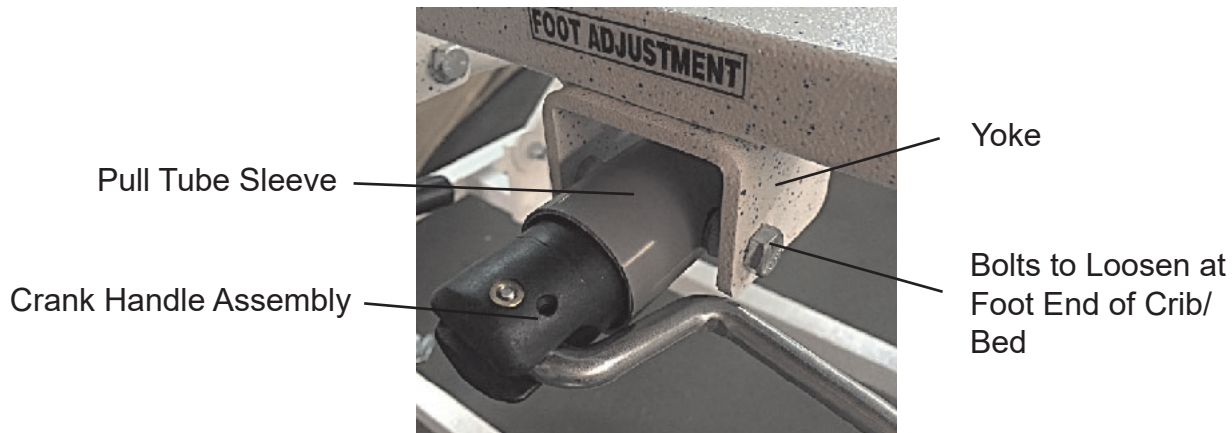
**Never use a screw larger than the original equipment on the crib for either the lift bar glide or the trigger mechanism. Both are sized to allow for movement of the trigger, and anything larger will impede the ability of the trigger mechanism to move.*

Lift bar trigger mechanisms are independent of each other, so it is not necessary to replace both if only one has broken.

CRANK HANDLE REPLACEMENT

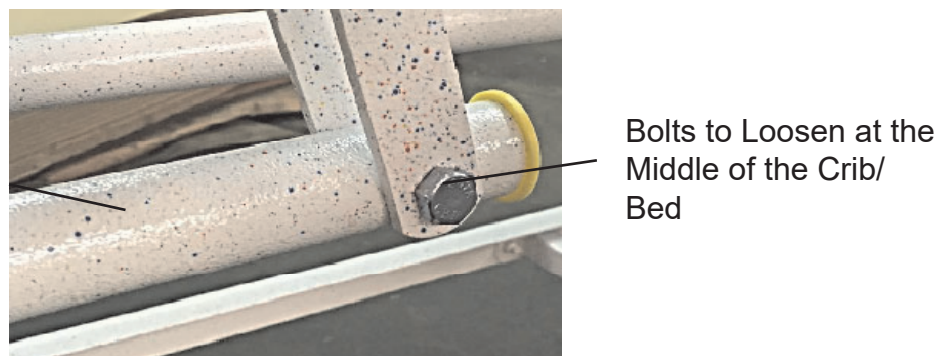
****Prior to beginning the replacement of the crank handle assembly- for safety reasons be sure the head, foot and the entire mattress platform (using the Hi-Lo System for beds & cribs that have this feature) of the bed/crib are all in the lowest position.****

To replace a crank handle assembly, it is recommended to remove the entire elevating assembly that needs the crank handle from the bed/crib first.



First, remove the two bolts on either side of the Yoke at the foot end of the crib/bed for the elevating assembly in need of a new crank handle.

The Elevating Assembly is made up of the Crank Handle, Grey Sleeve and Painted Pull Tube.



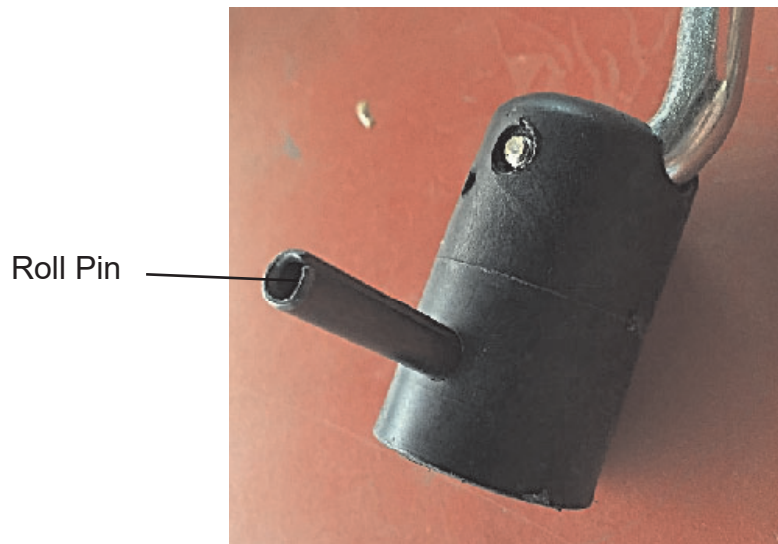
Next, remove the bolts on the other end of the elevating assembly near the middle of the crib/bed. This will allow the elevating assembly to be taken to a workbench or place where the handle can be changed.

CRANK HANDLE REPLACEMENT

Third, slide back the grey sleeve on the pull tube away from the crank handle, tap out the roll pin if it is still intact, and pull the broken crank handle or remains of the black plastic cap if it was broken off the elevating assembly.

Dissassembly is now complete, and to attach the new crank handle follow the steps in reverse order.

The new crank handle assembly can now be attached to the elevating assembly by tapping in the new roll pin.

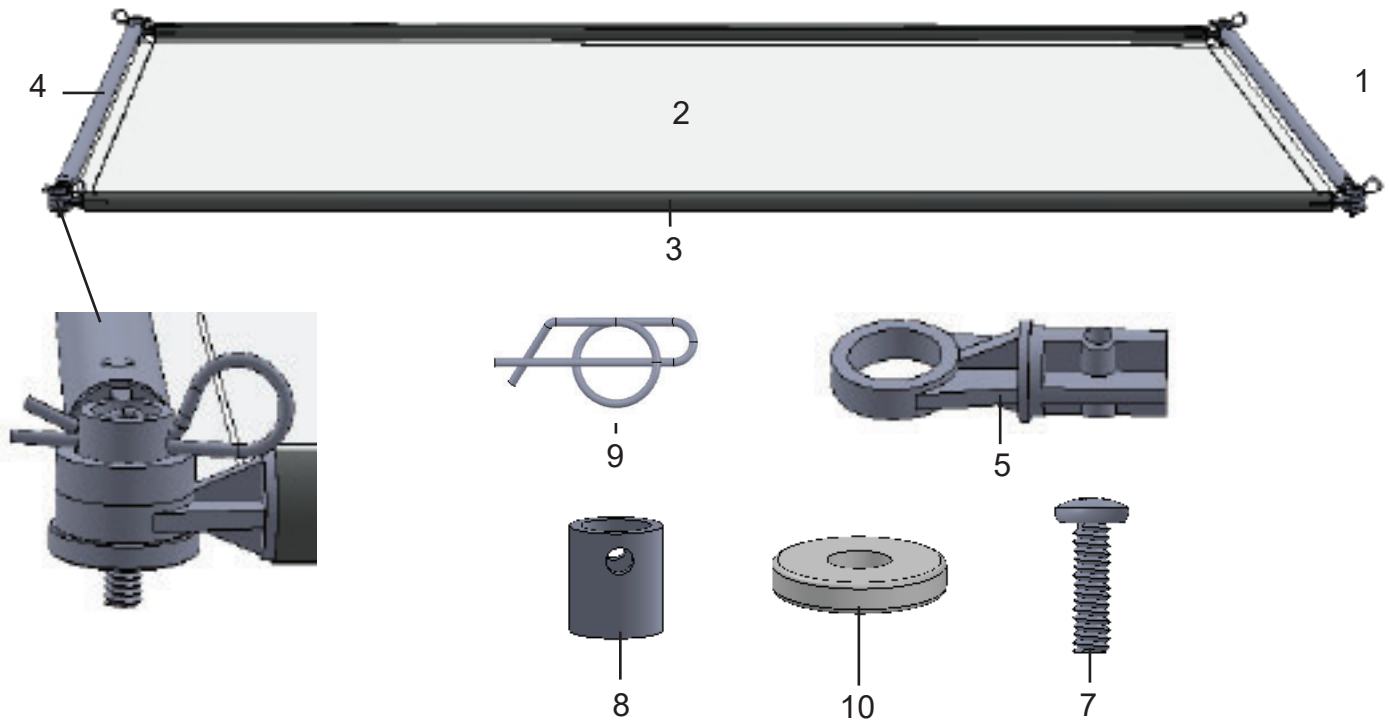


Slide the grey sleeve back down in place and line up the elevating assembly within the Yokes of the spring assembly.

Replace the bolts at both the foot end of the elevating assembly and near the middle of the crib/bed. **Be sure they are tightly and securely fastened before putting the crib or bed back in service.**

Reassembly is now complete.

VINYL TOP COVER PARTS LIST AND HARDWARE IDENTIFICATION



#	Part Description	Part #	Notes
1	30x54" Crib Vinyl Top Cover Assembly	*1936	Complete Vinyl Top Cover assembly including all hardware.
	30x60" Crib Vinyl Top Cover Assembly	*1944	
	36x60" Crib Vinyl Top Cover Assembly	*1956	
	36x72" Crib/Bed Vinyl Top Cover Assembly	*1976	
	36x83" Bed Vinyl Top Cover Assembly	*2071	
2	30x54" Crib Vinyl Top Panel Only	63878	Hardware not included
	30x60" Crib Vinyl Top Panel Only	63339	
	36x60" Crib Vinyl Top Panel Only	63879	
	36x72" Crib/Bed Vinyl Top Panel Only	60746	
	36x83" Bed Vinyl Top Panel Only	63827	
3	54" Side Curtain Rod Assembly	89201	Includes the plastic end pieces
	60" Side Curtain Rod Assembly	89202	
	72" Side Curtain Rod Assembly	89204	
	83" Side Curtain Rod Assembly	89207	
4	30" End Curtain Rod Assembly	89203	
	36" End Curtain Rod Assembly	89205	
5	End Piece- Curtain Rod	11585	Set of 2 sold in hardware bag 72094
6	Pin- for End Piece(Not shown)	11586	
7	1/4-20x7/8" Screw	63838	Parts used at the 4 corners of the crib to attach the top cover
8	Connector (white plastic)	11587	
9	Vinyl Top Ring Cotter Pin	60301	
10	Nylon Washer	11531	
11	Vinyl Top Hardware Bag	72072	One complete set of parts to install one top cover

VINYL TOP COVER INSTALLATION INSTRUCTIONS

****Please read through all instructions prior to starting assembly of the top cover.**

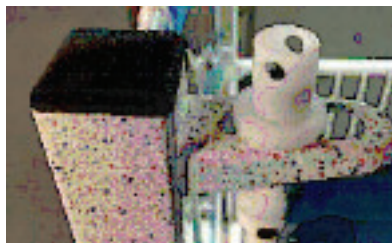
First, remove the screws and washers from the top of the 4 slide rods on the crib or bed.



Locate the plastic connectors, screws & nylon washers in the vinyl top cover assembly hardware kit. Insert the screw into the connector as shown with the nylon washer.



Next- install connectors into the 4 corner posts at the top of the slide rod. Be sure the holes in the top of the connector are at a 45 degree angle from the sides of the crib as shown below.



If one person is completing this installation- it is helpful to add a support of some kind across the opposite end of the crib to hold up the other end of the cover as the install is being completed.



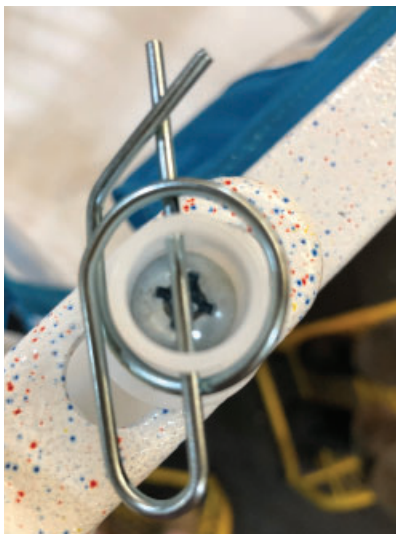
VINYL TOP COVER INSTALLATION INSTRUCTIONS CONT.

Next, find a clean flat surface to lay out the vinyl top cover and slide the 4 curtain rods into the appropriate pockets in the cover.

Be sure the short end curtain rods are resting on top of the longer side curtain rods for support when it is lifted up to be put it on the crib.



Put the top cover carefully on the crib over the plastic connectors in all 4 corners.



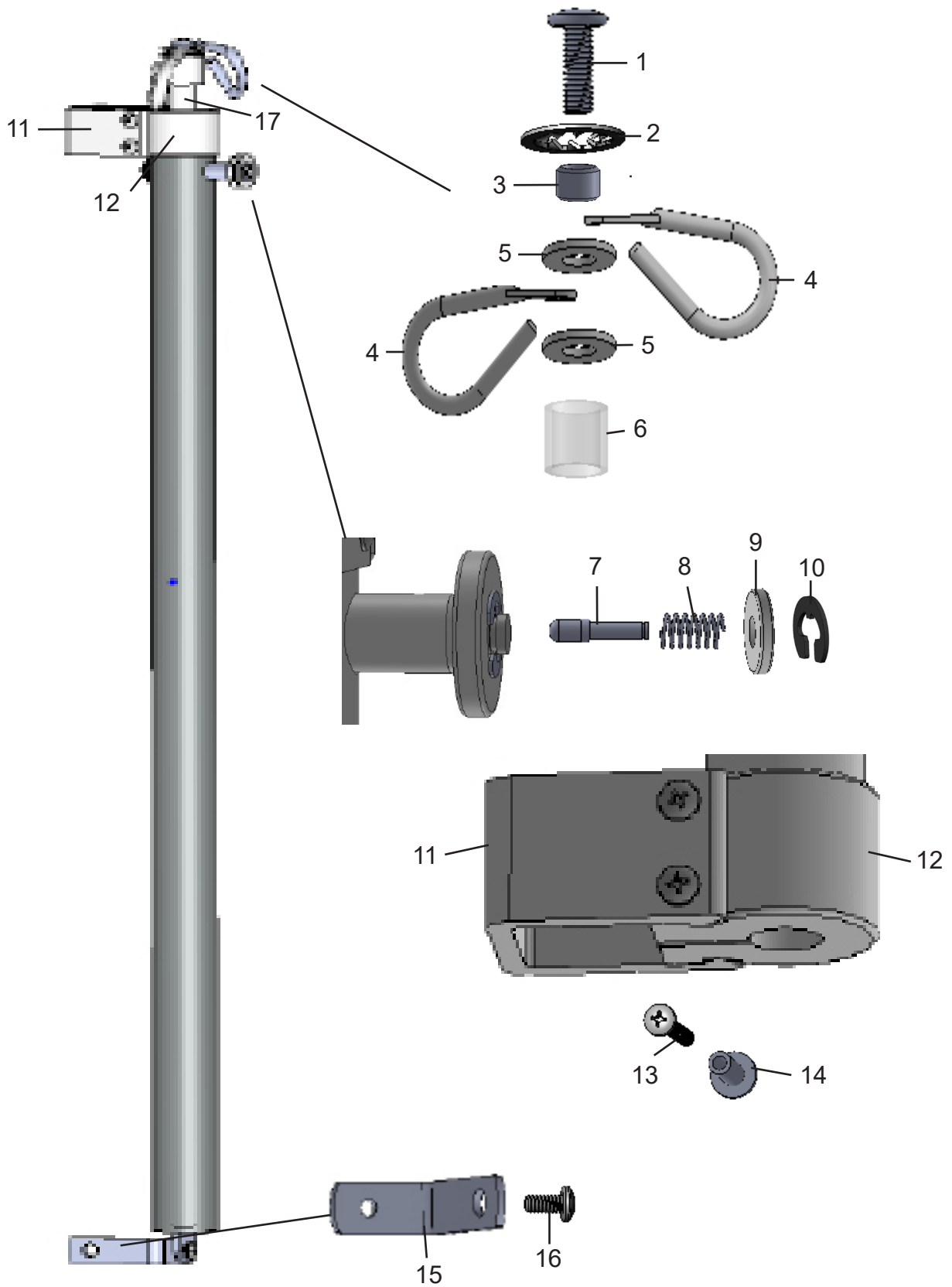
Insert the ring cotter pin into the plastic connector as shown to the left. It may be helpful to insert it at a slightly upwards angle so the ring can clear the edge of the connector.

Push the pin through both holes. The ring and the bent end of the pin will go up and over the connector. The ring and bent end help to create the “lock” that will prevent the pin from being pulled out or falling out.

Note- if the connector breaks and the pin needs to be removed, it will be necessary to use pliers to remove it.

Assembly is complete.

***1906 IV POLE ASSEMBLY DIAGRAM**



**Corresponding parts list is on the following page.*

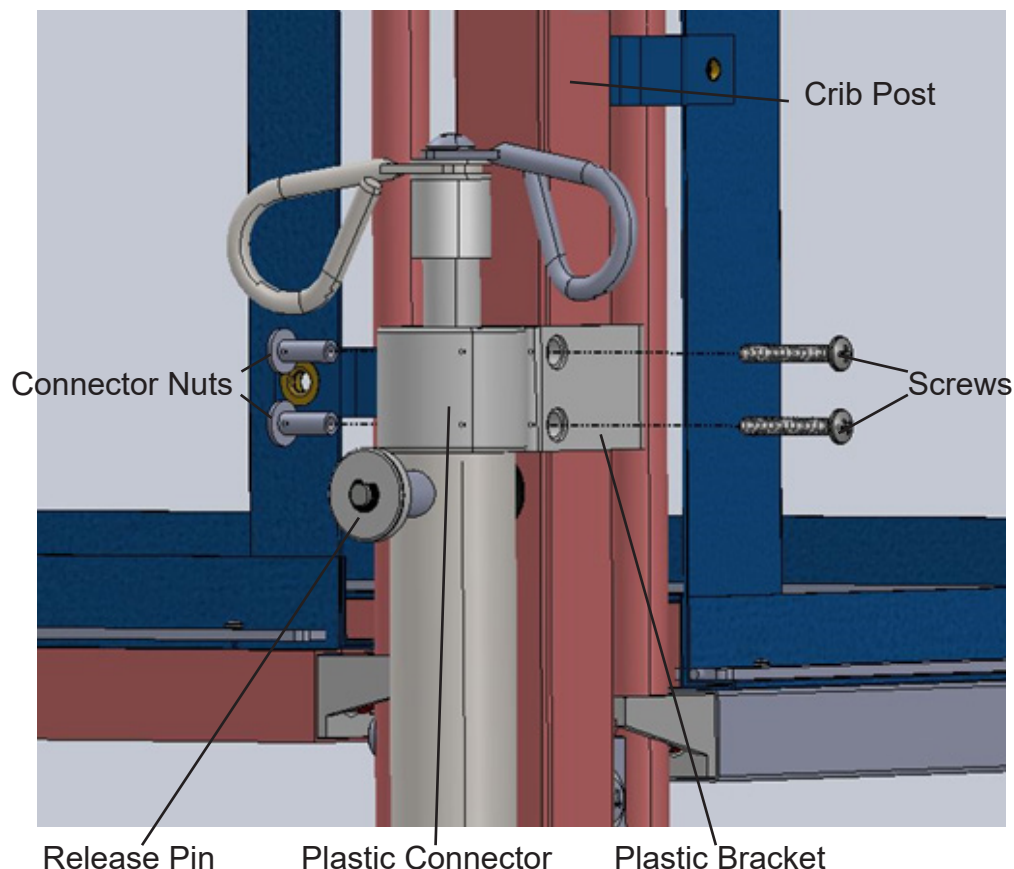
***1906 IV POLE PARTS LIST**

#	Part Description	Qty.	Part #	Notes
	*1906 IV Pole	1	*1906	Complete IV Pole Assembly
1	Screw	1	63392	
2	Lock Washer	1	63458	
3	Spacer	1	11628	
4	Hook	2	11627	Specify color when ordering
5	Washer	2	11555	
6	Plastic Spacer	1	62083	
7	Release Pin	1	11852	
8	Compression Spring	1	63006	
9	Plastic Washer	1	11531	Used as release knob
10	Retaining Ring	1	63034	
11	Plastic Bracket	1	11553	Available also as a set in hardware bag 72079
12	Plastic Connector	1	11552	
13	Screw	2	62047	
14	Connector Nut	2	60319	
15	Bracket Support-*1906 IV	1	11673	For bottom of IV Pole. Specify color when ordering
16	Screw 1/4-20x1/2"	1	60164	For bracket support
17	Inside Tube ass'y	1	81550	Inside tube- no hardware included
	Plug (Not shown)	1	63452	On back side of IV pole
	Stop Ring (Not shown)	1	81080	Internal component
	Hardware Bag	1	72082	Includes everything listed above excluding #17

The *1906 IV Pole is a standard feature on all HARD Manufacturing manual Springfield Cribs with a safety top.

ASSEMBLY INSTRUCTIONS

1. Remove all parts from packaging. Note- To install this IV pole, it is necessary to remove the side rail from the crib.
2. Place plastic brackets (11) on the inside of the desired crib corner post at the top and press end of brackets outward around the post.
3. Place a plastic connector (12) around the IV pole tube at the top just above the release pin (7).
4. Holding the IV pole assembly with the release pin (7) facing outwards away from the crib, turn the plastic connectors (12) to face the open ends of the plastic brackets (11), then press plastic connectors into the plastic brackets until they lock together.
5. Align the holes in the bracket and connector, then tap in the two connector nuts (14) into the holes in both the top and bottom brackets/connectors.
6. Insert the two screws (13) into the two connector nuts in the top bracket/connector and begin to fasten but do not completely tighten them at this time.

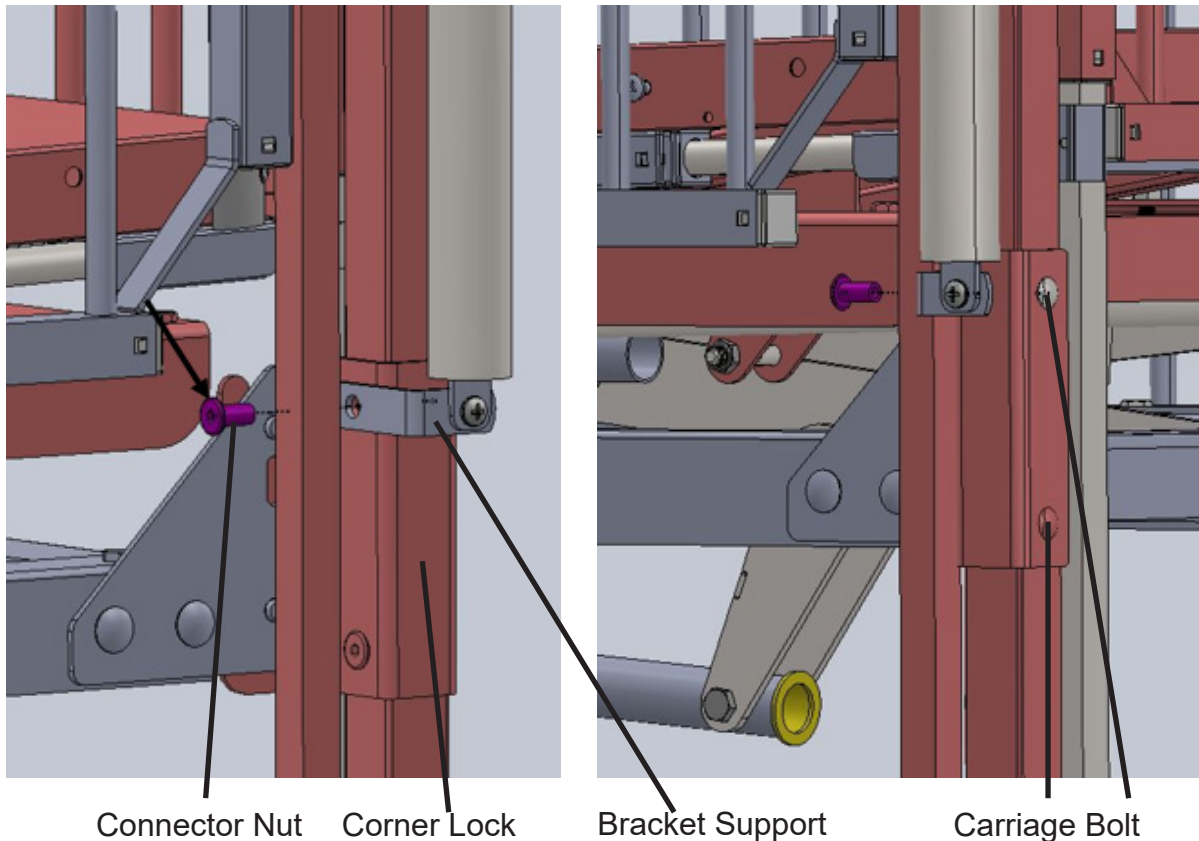


ASSEMBLY INSTRUCTIONS, CONTINUED

7. At the bottom of the IV pole, remove the connector nut from the top of the corner lock. The Carriage Bolt on the opposite side of the crib post can remain in place.

8. Position the bottom bracket support (15) as shown and refasten the connector nut to the carriage bolt.

*At this step, it may be necessary to slide the top plastic bracket and connector down with the IV pole assembly so the lower bracket support lines up with the hole in the corner lock.



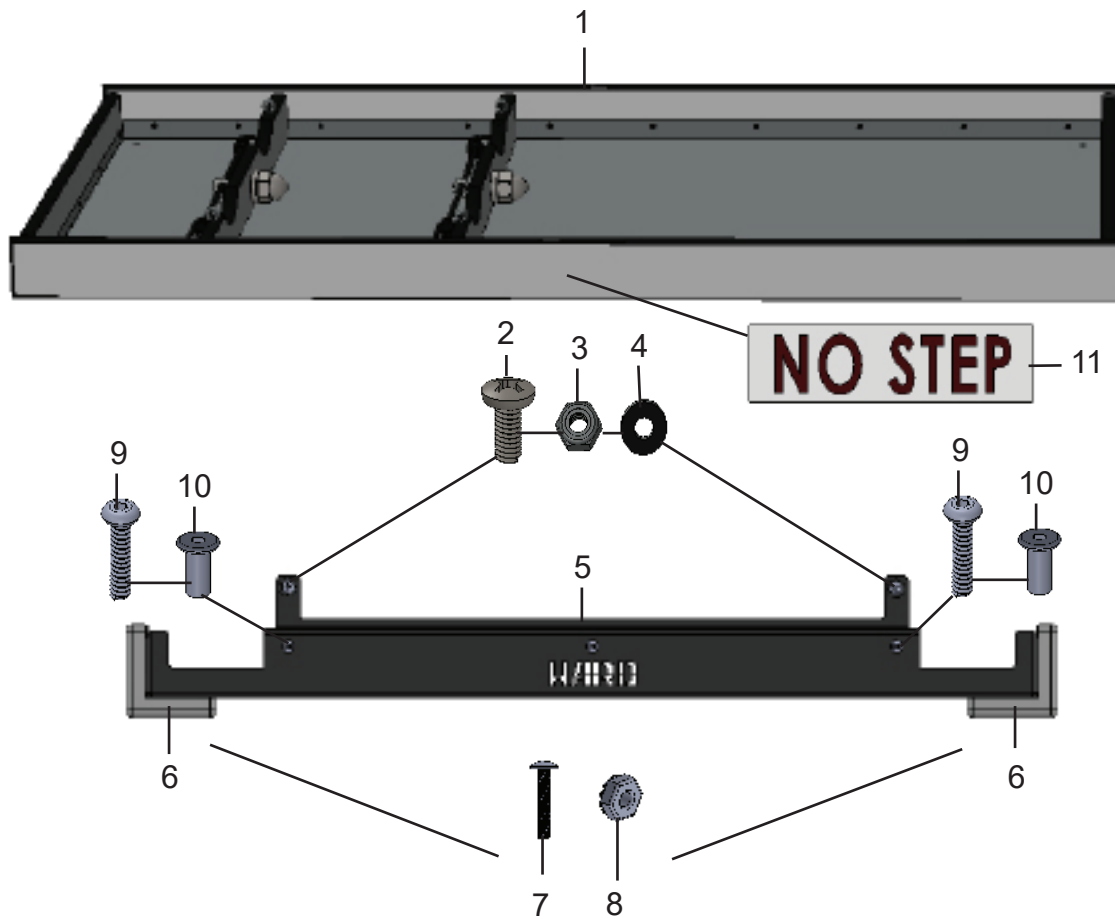
9. Return to the top plastic bracket and connector and tighten both screws in the connector nuts. Reinstall the side rail on the crib.

****Do not overtighten the bracket/connector or the plastic may break prematurely as a result.***

Check the inside tube assembly to be sure it raises and lowers freely when release pin is pulled back and should lock in several positions when released.

Assembly is complete.

SHELF & BUMPERS PARTS LIST



#	Part Description	Part #	Qty	Notes
1	Under Crib Shelf with O2 cut outs- 1935	88163	1	Complete shelf with hardware. Does not include bumpers or hardware for bumpers.
	Under Crib Shelf with O2 cut outs- 1943	88164	1	
	Under Crib Shelf with O2 cut outs- 1955	88165	1	
	Under Crib Shelf with O2 cut outs- 1975	88166	1	
2	Screw 1/4-20x5/8	63392	4	Used to attach shelf to bumper
3	Jam Nylon Locknut 1/4-20	63413	4	
4	Washer 1/4	63443	4	
5	Bumper Assembly- 1935, 1943	84128	2	Assembly includes #6, 7 & 8 only with bumper plate
	Bumper Assembly- 1955, 1975	84126	2	
6	Grey Corner Bumpers	63896	4	
7	Screw 8-32x7/8	60129	8	For grey corner bumper
8	K-Nut 8-32	60139	8	
9	Button Socket Cap Screw 1/4-20x7/8	60242	6	Used to attach bumper to the crib
10	Connector Nut 1/4-20	60245	6	
11	"NO STEP" Sticker	62180	2	Position: middle of both of the long sides of the shelf

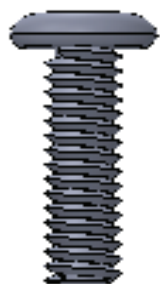
REPLACING OR INSTALLING AN UNDER CRIB SHELF OR BUMPER SYSTEM

HARDWARE IDENTIFICATION

Note: If the crib or bed does not have a bumper system, the under crib shelf will attach in a different manner. Please contact us for instructions in that situation.

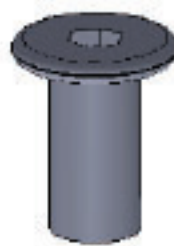
Suggested Tools:

1. 5/32" Allen Wrench
2. 3/16" Allen Wrench
3. #2 Phillips Screwdriver
4. 7/16 Wrench



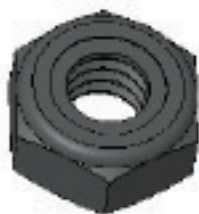
#60242 x 6

1/4 - 20 x 7/8 button socket cap screw



#60245 x 6

1/4 - 20 connector nut



#63413 x 4

Jam Nylon Locknut



#63443 x 4

Washer 1/4



#63392 x 4

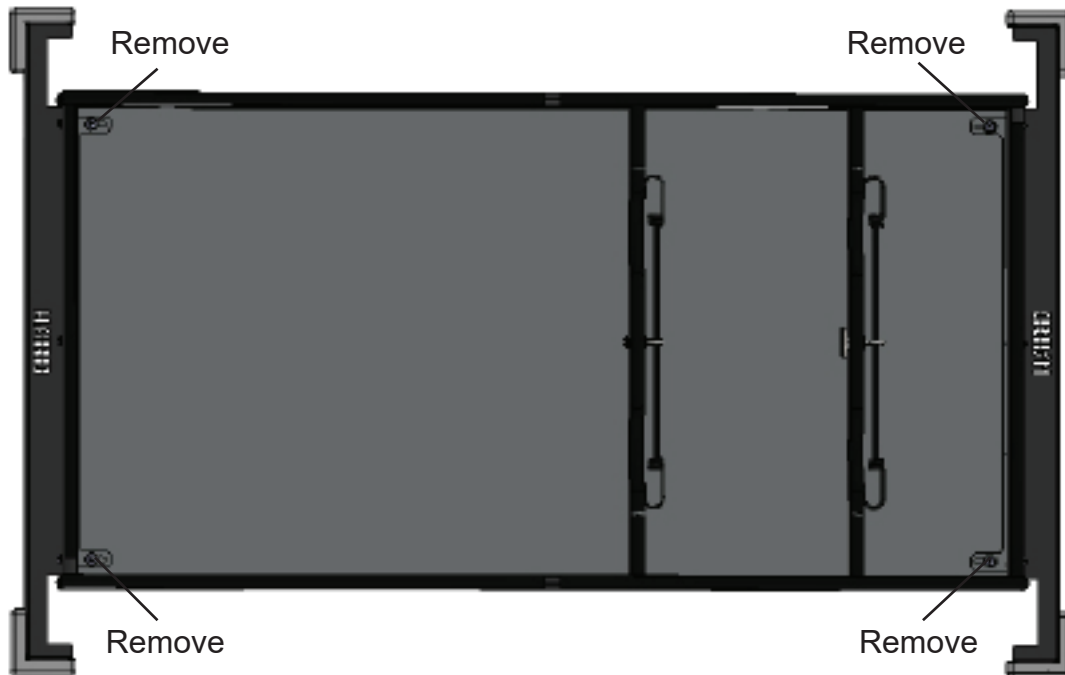
Screw 1/4-20x5/8



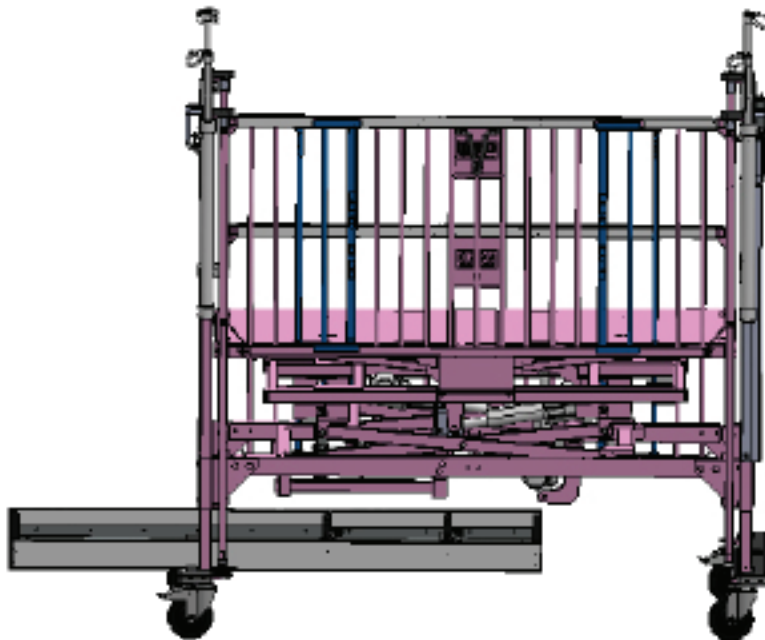
Bumper Assembly- Part numbers vary based on crib size. Consult parts list for the correct part#.

REPLACING OR INSTALLING AN UNDER CRIB SHELF OR BUMPER SYSTEM

1. To begin removal of a damaged shelf or bumpers, first remove the 4 screws #63392, 4 locknuts 63413 and washers 63443 located in the 4 corners of the shelf as shown.



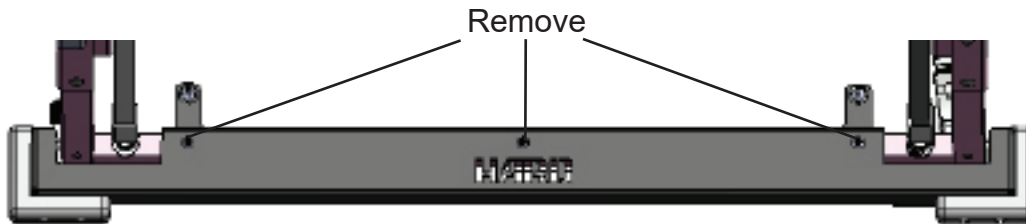
2. Slide the shelf out of the crib through one of the ends as shown.



REPLACING OR INSTALLING AN UNDER CRIB SHELF OR BUMPER SYSTEM

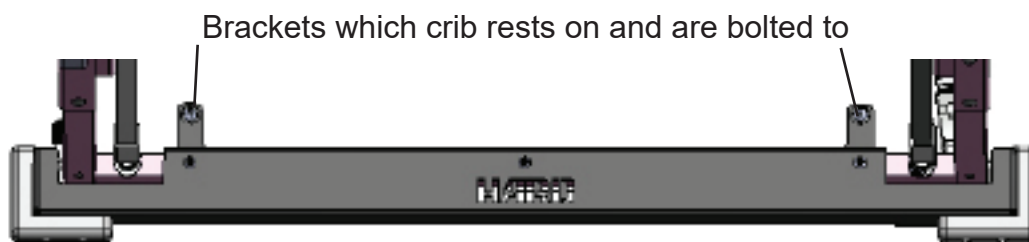
If only the shelf is being replaced, simply slide the new shelf through one of the crib ends. Line up the holes in the 4 corners of the shelf with the holes in the brackets on the bumper plates as shown below, and reinstall the 4 screws #63392, the 4 locknuts #63413 and the 4 washers #63443 and re-assembly will be complete.

3. To remove a damaged bumper, remove the 3 cap screws 60242 and 3 connector nuts 60245 as shown, then remove the damaged bumper. Disassembly is complete.



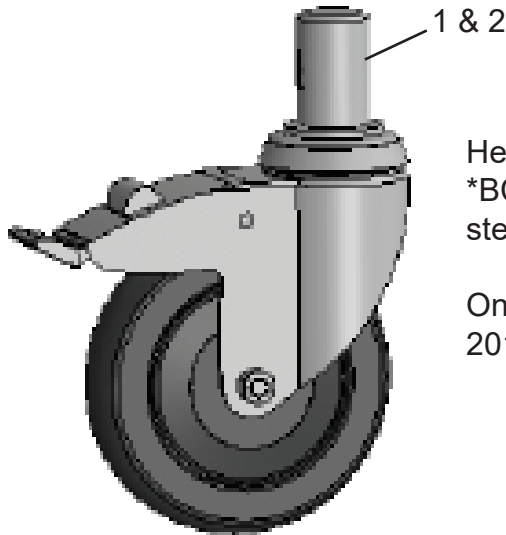
4. Install the new bumper plate(s) by aligning the holes in the plate with the holes in the crib cross bar, and install 3 cap screws 60242 and the 3 connector nuts 60245 in each bumper plate.

5. If a new shelf is being installed as well, there will be brackets on which the shelf rests on and is bolted to as shown below. Slide the shelf through one of the ends of the crib as shown in Step #2. Align the holes in the shelf with the holes in the bumper plate brackets and install the 4 screws #63392 from the top, and the 4 locknuts #63413 and 4 washers #63443 from the bottom.



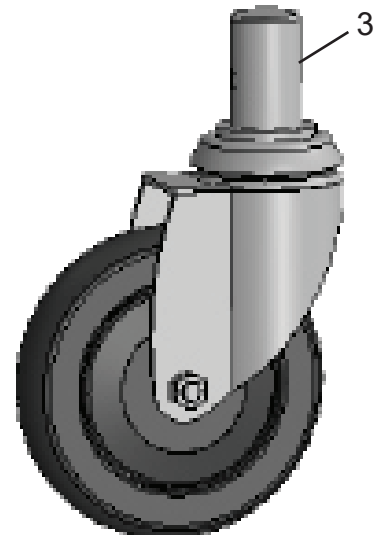
Assembly is complete.

CASTERS & MISC



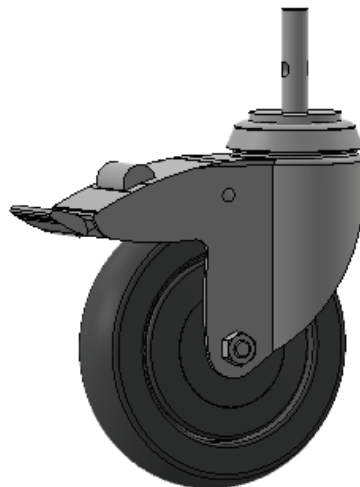
Heavy duty casters
*BC-65 with large bolt in stem.

On cribs and beds made 2015 to present.



#	Part Description	Part #	Notes
	5" Heavy Duty Casters- 2015 to present	*BC-65	Full set with hardware- 1 Steer, 2 Brake, 1 Swivel & Hardware
1	Steer Caster	72100	Located at head end right side
2	Brake Caster	72101	Located at head end left side and foot end right side
3	Swivel Caster	72102	Located at foot end left side
4	Bolt- 8-8x10mm	61007	2 per caster
	5" Casters- Full set includes: 2 Brake, 2 Swivel & 3 Caster Sockets	*BC-15	See below. This set of casters is on hospital cribs manufactured prior to 2015
	Brake Caster	72104	
	Swivel Caster	72105	
	Caster Socket	60606	
	Bright White Touch Up Paint- 1/4 pint	00564	Enamel based paint
	Antique White Touch Up Paint- 1/4 pint	00562	

Position of the casters is determined by standing at the foot end of the crib.



Old style brake caster
72104 with narrow stem
used with a black plastic
caster socket.

On cribs and beds made
prior to 2015.



The nations #1 manufacturer of hospital cribs










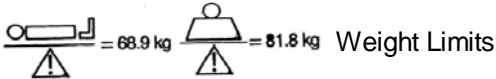
CAUTION SHEET

All bolts and other fasteners must be securely tightened and maintained when crib is put into service.

Before each usage or assembly, inspect crib for damaged hardware, loose joints, missing parts or sharp edges.

Symbology Definitions / Technical Labels

The following designations of symbols which are found on various labels on the bed and discussed in the Manual.

 Consult Accompanying Documents	 Alternating Current, Single Phase
 Attention, Consult Accompanying Documents	 Type B Applied Part
 Warning Dangerous: Voltage	 Protective Earth (Ground)
 Atmospheric Pressure Limits	 Humidity Limits
 Temperature Transportation Conditions	 Weight Limits

Technical parameters of these beds place them in the following categories:

- a) Class 1 equipment
- b) Type B equipment
- c) IPX4 ingress of water (ordinary equipment)
- d) Equipment not suitable for use in the presence of flammable anaesthetic mixture with air or oxygen or nitrous oxide
- e) Mode of operations continuous with intermittent loading

To avoid overheating the motor after raising and lowering the bed three full times in successions, HARD Manufacturing Company requires a fifteen minute break before repeating the same



The nations #1 manufacturer of hospital cribs

CLEANING INSTRUCTIONS FOR HARD MANUFACTURING CRIBS, BEDS & MATTRESSES

CRIBS OR BEDS

- ◆ HARD Manufacturing recommends the cribs and beds be washed by hand with a non-abrasive cleaner of your facility's choice and then thoroughly dried with a soft cloth or towel. Our equipment should never be placed in a machine for cleaning or subject to steam guns or pressure washers of any kind. Do not allow the crib or bed to air dry as pools of water left on the mattress pan surface or near bolt holes may eventually lead to premature corrosion.
- ◆ We suggest the use of a cleaner such as one that contains Quaternary Ammonium Chloride (Quats). Quats will both clean the crib or bed as well as disinfect it without oxidizing the epoxy coating.
- ◆ Any type of cleaner containing ammonia, alcohol, bleach or any other chemical that is abrasive should never be used on our cribs or beds for any reason.

MATTRESSES

- ◆ For mattresses, HARD Manufacturing recommends they be wiped down with a cleaner/disinfectant of the facility's choice. Our mattresses should not be subjected to any type of power washing. Bleach should never be used on our mattress as it may discolor the fabric.
- ◆ Mattresses should never be put back on the crib if the cover is not thoroughly dry. Failure to do so may cause premature corrosion on the pan mattress surface.
- ◆ Mattresses should always be allowed to dry in a flat position, never in an upright position. Failure to keep the mattress flat during the drying process could lead to the foam inside the cover to shift, creating permanent damage/lumps in the mattress.

VINYL CURTAINS

- ◆ Vinyl curtains and the vinyl top/ceiling covers on Springfield Cribs, Critical Care II Cribs and Monroe Beds can be cleaned with a non-caustic, non-alkaline emulsified detergent to remove oil, dirt, grease, etc. The detergent should be sprayed on or applied with a rag and immediately wiped off. Be sure to dilute the detergent as per the manufacturer's instructions prior to use.

Please note failure to follow the recommended cleaning guidelines stated by HARD Manufacturing can cause permanent damage to the crib/bed and/or mattress which will not be covered under warranty.





PREVENTATIVE MAINTENANCE GUIDE **FOR MANUAL HOSPITAL CRIBS**

The intent of this document is to provide health care facility engineers, maintenance personnel and other health care professionals involved in the operation and maintenance of manual cribs made by Hard Manufacturing the comprehensive information needed to achieve their expected 9 year service life.

We recommend the preventative maintenance checklist provided be performed once per year per crib at minimum.

If a crib is damaged in any way that poses a safety issue to either the patient or staff utilizing it, we recommend that it be removed from service and subjected to a complete preventative maintenance inspection. A checklist of suggested items can be found below and the following pages.

1.0 General Operation

CAUTION

1.1 Please refer to the caution pages earlier in this manual for information on the safe operation of one of our electric cribs.

1.2 If a crib is damaged in any way that poses a safety issue to either the patient or staff utilizing it, we recommend that it be removed from service and subjected to a complete preventive maintenance inspection. A checklist of suggested items to review is on the following pages of this document.

1.3 General overall cleaning with mild non-abrasive detergent should be applied at least once (1) per year or at the discretion of your facility. See more detailed cleaning instructions on a separate page of this manual.

2.0 Crib Safety Audit

2.1 Filler Bar Spacing – Examine the spacing between bars of all cribs in service. If a crib has railing spaces that exceed 2-3/8", remove it from service.

2.2 Entrapment in cribs – Examine the spaces between the mattress support and head, foot and side rails, with the mattress both flat and in a raised position. If the opening exceeds 4", remove the crib from service.

2.3 Mattress Fit – Inspect your crib mattresses to determine whether they are of adequate size. The mattress should fit snug within the rails and there should not be any sizeable gaps between the mattress and the rails.

2.4 Crib Weld Assemblies– Thoroughly inspect head and foot ends, side rails, the mattress platform and any other metal components of the crib frame for bent components, cracks or breaks. Remove from service immediately if any of this type of damage is found.



PREVENTATIVE MAINTENANCE GUIDE **FOR MANUAL HOSPITAL CRIBS**

HARD Serial # of Inspected Unit: _____ Facility Serial # of Inspected Unit _____

3.0 Physical Inspection of Crib Components

YES	NO	Side Rails, End Assemblies & Slide Rods
_____	_____	3.1 Do Any of the rails on the crib have bent filler bars, or damaged or broken welds?
_____	_____	3.2 On both the head and foot ends, check the weld assemblies paying special attention to the upper and lower crib eyes. Are the welds free of damage or breaks?
_____	_____	3.3 Do all trigger assemblies firmly latch in place to secure the rails, and retract & release properly when the Johns Hopkins handle is utilized?
_____	_____	3.4 Does the Johns Hopkins handle operate properly on all rails?
_____	_____	3.5 Raise and lower the side rails and end rails to verify they operate in a smooth motion.
_____	_____	3.6 Are the bushings present in the rail openings at the top and bottom? These are the plastic bushings that help the rail glide up and down on the slide rods.
_____	_____	3.7 Are the components at the top and bottom of the slide rods intact and free of damage?
_____	_____	3.9 Are the protective teething bar covers present on the top of the side rails?
_____	_____	3.10 If the crib has Portland or Dialysis Gates in the side rails, do the trigger assemblies retract and release? Do the gates remain securely closed when tugged on?
_____	_____	3.11 Are all of the components of the Gatch Extender present and in working order? See the service manual for a list of components.

IV Pole(s)

_____	_____	3.12 Are the brackets and connectors present and free of damage on all IV poles?
_____	_____	3.13 At the top of the IV pole, are all the components present, free of damage and securely fastened?
_____	_____	3.14 On the upper portion of the IV pole, are the components present that are used as the release knob?
_____	_____	3.15 Raise and lower the IV pole to be sure it operates in a smooth, east manner and locks in place properly when raised.



PREVENTATIVE MAINTENANCE GUIDE **FOR MANUAL HOSPITAL CRIBS**

3.0 Physical Inspection of Crib Components, Continued

YES NO

Mattress & Mattress Platform Assembly

- ____ 3.16 Do any of the components of the scissor lift or remainder of the mattress platform have any breaks in the welds or any bent or damaged parts?

- ____ 3.17 Are the mattress pans showing any signs of rust? If so, refer to the cleaning instructions on the prior pages of this manual. Replacement of those rusted components will be necessary.

- ____ 3.18 Are all nuts and bolts on the mattress platform securely fastened? *Note- nuts and bolts at the center of the scissor brackets and at the ends of the motors should not be over-tightened or it may impede the smooth movement of the crib functions.*

- ____ 3.19 Do the crank handles on the foot end all work properly to raise the head, foot & Hi-Lo System on the bed smoothly? Are the components of the crank handles present and intact/unbroken?

- ____ 3.20 Is the mattress cover completely intact with no tears in the fabric or the trim?

Casters, Under Crib Shelf and Bumper System

- ____ 3.21 Is the crib able to be moved easily/do the wheels roll smoothly.

- ____ 3.22 Do the casters show any sign of being bent or not in proper alignment?

- ____ 3.23 Do the wheels have any flat spots indicating they may have been pushed with brakes on?

- ____ 3.24 If the crib has heavy duty casters, are the bolts present in all 4 casters and securely fastened? If the crib has the black plastic caster sockets, do they appear to be intact/unbroken?

- ____ 3.25 Do the locking mechanisms on the steer and brake casters function properly?

- ____ 3.26 Check the under crib shelf thoroughly. Is it free from any cracks or other damage?

- ____ 3.27 Is the under crib shelf securely fastened to the bumper system?

- ____ 3.28 Inspect the bumpers on both ends of the crib. Are the grey corner bumpers present? Are the other portions of the bumpers free of breaks, bends or other damage?

- ____ 3.29 Are the bumpers both securely fastened to the ends of the crib?



PREVENTATIVE MAINTENANCE GUIDE **FOR MANUAL HOSPITAL CRIBS**

3.0 Physical Inspection of Crib Components, Continued

YES	NO	Curtains, Curtain Assemblies & Vinyl Top Covers
------------	-----------	--

- | | | |
|-------|-------|---|
| _____ | _____ | 3.29 Inspect all vinyl curtains. Are the fabric loops, curtain trim and the vinyl itself clean and free of tears or other damage? Is the vinyl top (if present) free of damage? |
| _____ | _____ | 3.30 Inspect all curtain lift bars. Do the fingertip trigger mechanisms squeeze and retract properly? |
| _____ | _____ | 3.31 Are the plastic lift bar glides at either end of each lift bar present and free of damage? |
| _____ | _____ | 3.32 Are the curtain rods at both the top of the curtains and on the vinyl top cover (if one is present) intact and unbent? Are the plastic end pieces present and unbroken? |
| _____ | _____ | 3.33 Check the stop rings that hold the curtains up to be sure they are tight and secure. |
| _____ | _____ | 3.34 If a vinyl top cover is installed, are all 4 hitch pins to secure the cover present? |
| _____ | _____ | 3.35 Raise and lower all curtain lift bars to be sure they operate in a smooth, easy manner. |

Inspection completed by _____ Date of Inspection _____



PREVENTATIVE MAINTENANCE GUIDE **FOR ELECTRIC HOSPITAL CRIBS**

4.0 Performance Testing

Staff Control, Transformer, Scale and Motors

Plug the crib into an electrical outlet if unplugged.

YES NO

- | | | |
|-------|-------|---|
| _____ | _____ | 4.1 Is the green light on the under crib control box lit showing it is getting power? |
| _____ | _____ | 4.2 Press the head up/down buttons allowing the head to travel to the top of its range prior to pressing the down button. Is it functioning correctly and getting full range of motion? |
| _____ | _____ | 4.3 Press the foot up/down buttons allowing the foot/knee section to travel to the top of its range prior to pressing the down button. Is it functioning correctly and getting full range of motion? |
| _____ | _____ | 4.4 Press the Hi-Lo up/down buttons allowing the mattress platform to travel to the top of its range prior to pressing the down button. Is it functioning correctly and getting full range of motion? |

Scale Control if present

- | | | |
|-------|-------|---|
| _____ | _____ | 4.5 Does the scale power up and display the current weight (which may be zero)? |
| _____ | _____ | 4.6 When a certified 10kg weight is placed on the crib, does the scale appear to weigh correctly? <i>Note- this is the only unit of measure that can be used to calibrate or test a scale.</i> |



The nations #1 manufacturer of hospital cribs
Domestic Hospital Warranty

Five (5) year warranty

HARD Manufacturing will replace at no cost to the purchaser any non-expendable component such as the head and foot end assemblies, side assemblies, mattress platform or any electrical component with the exception of battery backup units, found to have a defect in materials or workmanship within five (5) years from the date of purchase at our discretion.

One (1) year warranty

HARD Manufacturing will replace at no cost to the purchaser any expendable component such as, but not limited to, mattresses, trigger assemblies, slide rods or slide rod components, crank handles, Johns Hopkins handles, battery backup units, vinyl curtains, curtain rods, or IV components found to have a defect in materials or workmanship within one (1) year from the date of purchase at our discretion.

Terms and Conditions of the Warranty Period

The warranty covers normal use of our cribs or youth beds. It does not cover damage or defects that occur due to any of the following:

1. Abuse, misuse, mishandling and excessive wear by staff, patients or parents/caregivers.
2. Modifications of the equipment including the electrical equipment. The covers should never be removed on the motors, transformers, control boxes, scale or staff controls. Doing any type of modification to our cribs or youth beds will void the warranty.

Replacement of any part under warranty is contingent upon the following:

1. The customer is to provide the serial number of the crib or bed as well as the serial number of the defective or damaged part(s) if one exists. If the part is a mattress, the customer must supply the serial number of the mattress as well as photos of both tags on the mattress.
2. The customer is to provide photos of the defective or damaged part.
3. The customer must, if requested by HARD Manufacturing, return the defective or damaged item for inspection prepaid within 30 days of reporting the issue.

Return Policy

Acceptance of returns on all new and unused equipment and parts is at the discretion of HARD Manufacturing. The purchaser will be responsible for a restocking fee and the freight costs associated with returning the equipment or item.

Maintenance

Placing cribs and youth beds in cart washers and/or the use of steam spray guns for disinfecting is not recommended. Use a non-abrasive cleaning solution such as a mild detergent and thoroughly dry all components of crib or bed prior to replacing the mattress on the unit. Solvents containing alcohol, ammonia or other abrasives should be avoided. Failure to follow the suggested cleaning/drying instructions could lead to premature corrosion and require replacement of the mattress.

Expected Service Life of HARD Manufacturing Cribs or Beds is 9 years.

