

stryker[®]

LY57335/3300-000-050

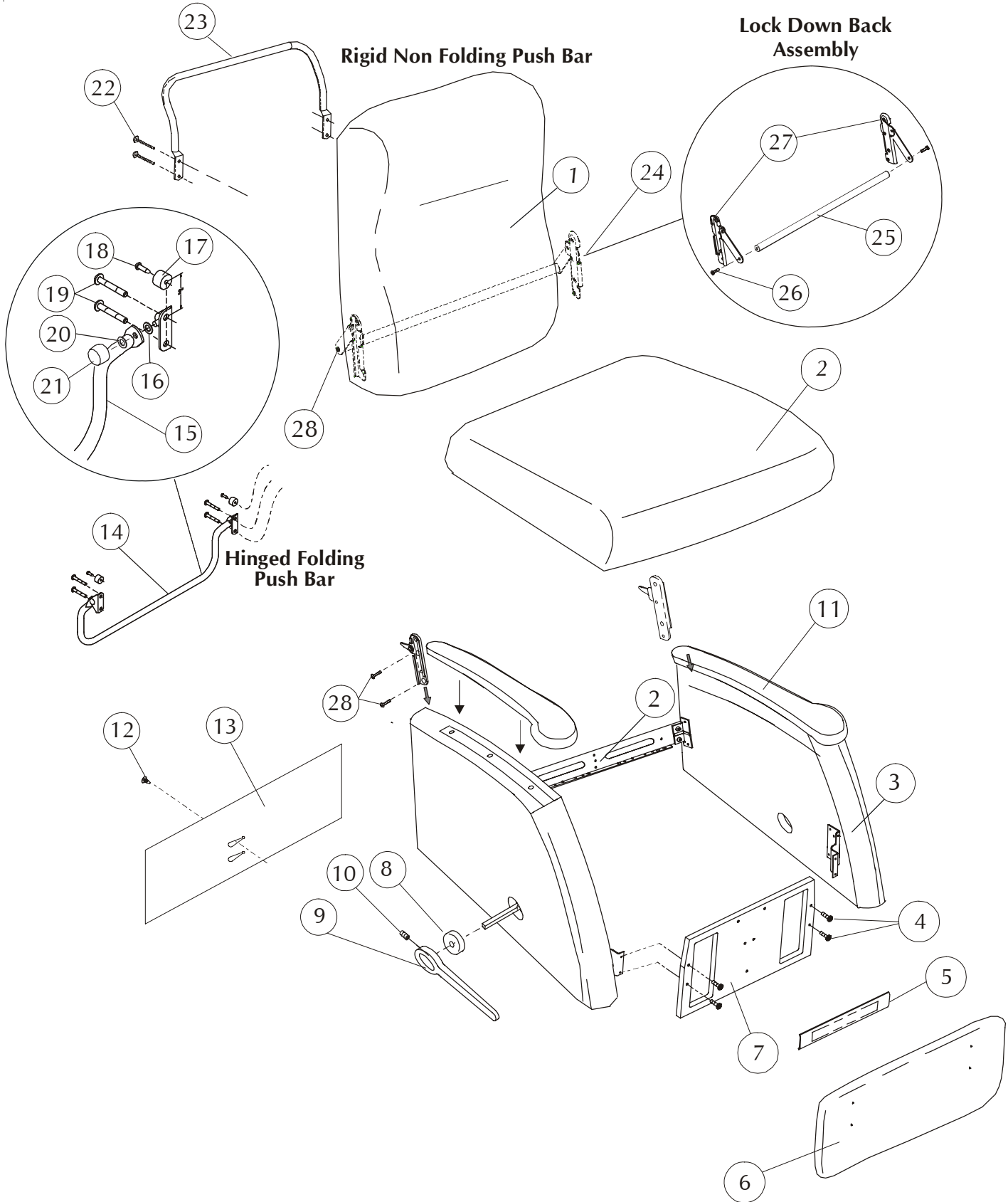
Operation/Maintenance Manual

*For Parts or Technical Assistance
800-327-0770*

Table of Contents

Style LY57335/3300-000-050	2-3
Drive Rod Assembly	4-5
Support Shaft/Drive Rod Assembly	6-7
Body Assembly	8-9
Specification	10
General Information	11
Rigid Locking Caster Option	
Lock Down Back Assembly Instructions	
Push Bar Assembly Instructions	
Repair Instructions	

LY57335/3300-000-050 RECLINA-ROCKER



LY57335
STRYKER MEDICAL SYMMETRY 2 SERIES

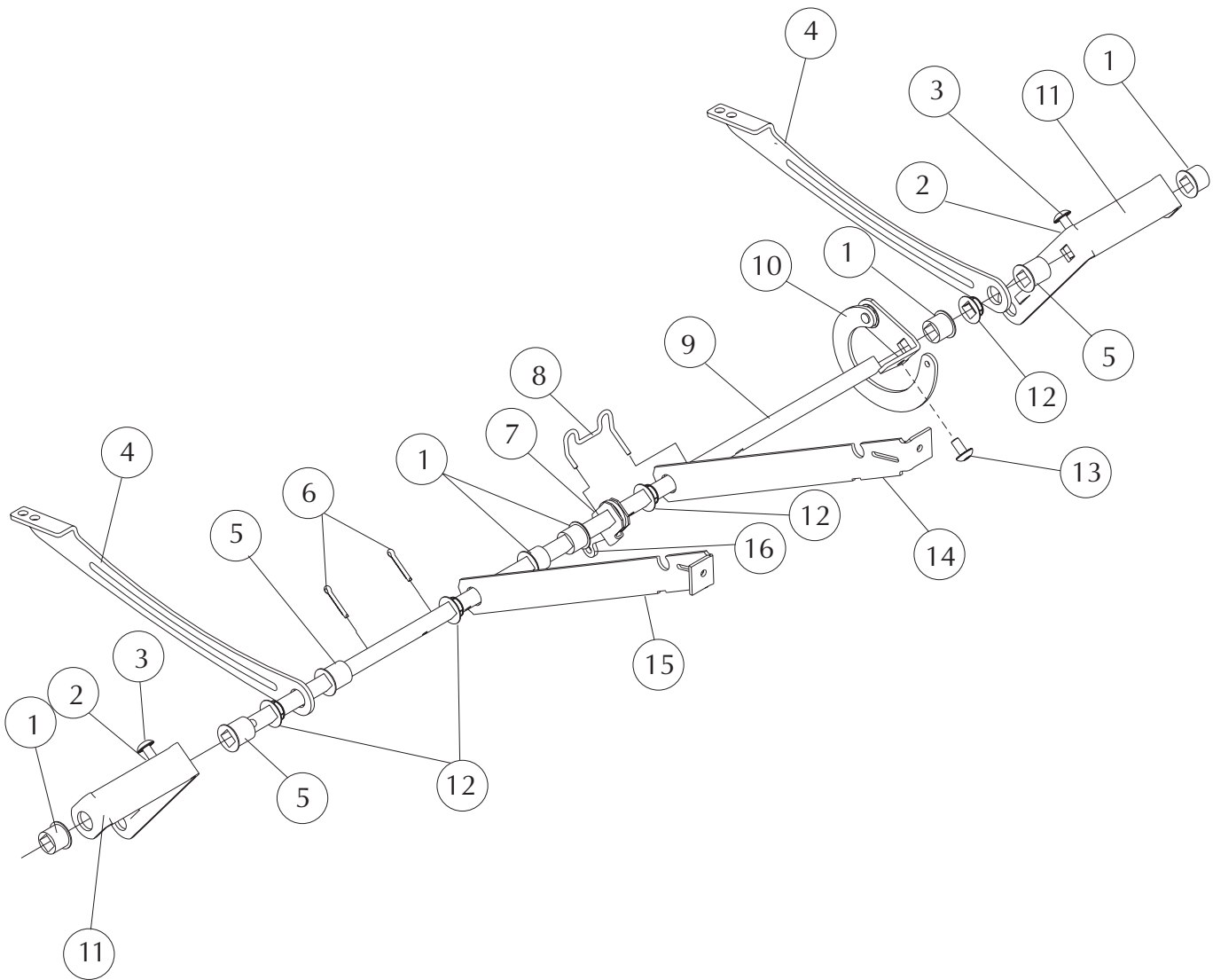
* Indicate finish or color when ordering, **Indicate fabric cover number when ordering, ***Add charge for yardage to cost of kit - - - -

Note: When replacing parts, specify style and acknowledgment numbers.

DETAIL	SYK P/N	LELAND P/N	DESCRIPTION	QTY.
1	3309-010-010	64990100-10**	Back Upholstered plus 2.0 yd cover required (LY55/56/57335)	1
2	3309-138-917	11991389-17**	Seat Upholstered plus 1.5 yd cover required	1
3	3309-709-000	64990090-00L/R*	Arm Upholstered plus 1.5 yd cover required; Closed Arm	1 ea
	3309-909-000			
	3309-709-001	64990090-01L/R*	Arm Upholstered plus 1.5 yd cover required; Open Arm	1 ea
	3309-909-001			
4	3300-035-702	96000357-02	¼ -20 x 1" Modified Flat Head Screw	4
5	3309-000-101	94990001-01**	Mid Ottoman Upholstered plus 0.5 yd cover required	1
6	3309-056-900	11990569-00**	Legrest Upholstered plus 1.0 yd cover required	1
7	3309-042-900	61990429-00**	Front Rail Upholstered plus 1.0 yd cover required (LY57335)	1
8	3309-001-600	95990016-00*	Escutcheon Finished	1
9	3309-900-102	95990001-02R*	Long Handle Finished, Right (Standard)	1
	3309-700-102	95990001-02L*	Long Handle Finished, Left (Option)	1
10	3300-036-200	96000362-00	¾-16 x ½ " Set Screw	1
11	3309-709-500	65050095-00L/R	Top Arm, Polyurethane Black; Standard	1 ea
	3309-909-500			
	3309-082-000	96000820-00	Compression Dowel (pt. of det. 11)	10
	3309-103-400	96001034-00	#10-32 Phillips Head Screw (pt. of det. 11)	10
12	3300-040-900	95000409-00	Christmas Tree Fastener	1
13	3308-000-328	10980003-28**	Tailgate Sewn plus 1.0 yd cover required	1
14	3307-050-403	62970504-03	Push Bar/Hinge Subassembly, Standard	1
15	3307-001-604	62000654-03	Hinged Folding Push Bar, Standard (pt. of det. 14)	1
16	3300-007-100	96000071-00	Nylon Washer, Standard (pt. of det. 14)	2
17	3300-027-300	65000273-00	Recessed Bumper, Standard (pt. of det. 14)	2
18	3300-020-001	96000200-01	#10-18 x ¾" Phillips Head Screw, Standard (pt. of det. 14)	2
19	3300-002-413	96000024-13	¼-20 x 2" Torx Head Screw, Standard (pt. of det. 14)	4
20	3300-029-200	65000292-00	Rubber Washer, Standard (pt. of det. 14)	2
21	3300-029-000	65000290-00	Decorative Cap Nut, Standard (pt. of det. 14)	2
22	3300-001-301	96000013-01	¼-20 x ¾" Torx Flat head screw	2
23	3300-018-201	62000182-01	Rigid Non Folding Push Bar, Option	1
24	3309-042-200	62970422-00	Lock Down Back Assembly Kit, Standard	1
25	3300-048-800	62000488-00	Lock Bar, Standard, (pt. of det. 24)	1
26	3300-001-301	96000013-01	¼-20 x ¾" Torx Flat head screw (pt. of det. 24)	2
27	3307-907-900	692970079-00L/R	Back Lock Subassembly, Standard, (pt. of det. 24)	1 ea
	3307-707-900			
28	3300-001-303	96000013-03	¼ -20 X 1¼ " Torx Flat Head Screw (pt. of det. 24)	4
	3303-000-501	94000005-01`	Black Elastic Straps (not shown) (pt. of det. 24)	2
Features:				
UB10		Black Urethane Open Arm		
	3309-709-500	65050095-00L/R	Top Arm	1 ea
	3309-909-500			
	3309-082-000	96000820-00	Compression Dowel	8
	3309-103-400	96001034-00	#10-32 Phillips Head Screw	8
Options:				
WA1		Wood Closed Arm		
	3309-719-400	61050194-00L/R*	Top Arm Finished	1 ea
	3309-919-400			
	3309-082-000	96000820-00	Compression Dowel	10
	3309-000-802	96000008-02	#10-12 x 7/8" Screw	4
	3309-000-801	96000008-01	#10-12 x 1/2" Screw	6
WA2		Wood Open Arm		
	3309-719-400	65050095-00L/R*	Top Arm Finished	1 ea
	3309-919-400			
	3309-082-000	96000820-00	Compression Dowel	8
	3309-000-802	96000008-02	#10-12 x 7/8" Screw	4
	3309-000-801	96000008-01	#10-12 x 1/2" Screw	4

LY57335 / 3300 - 000 - 050

DRIVE ROD ASSEMBLY



LY57335

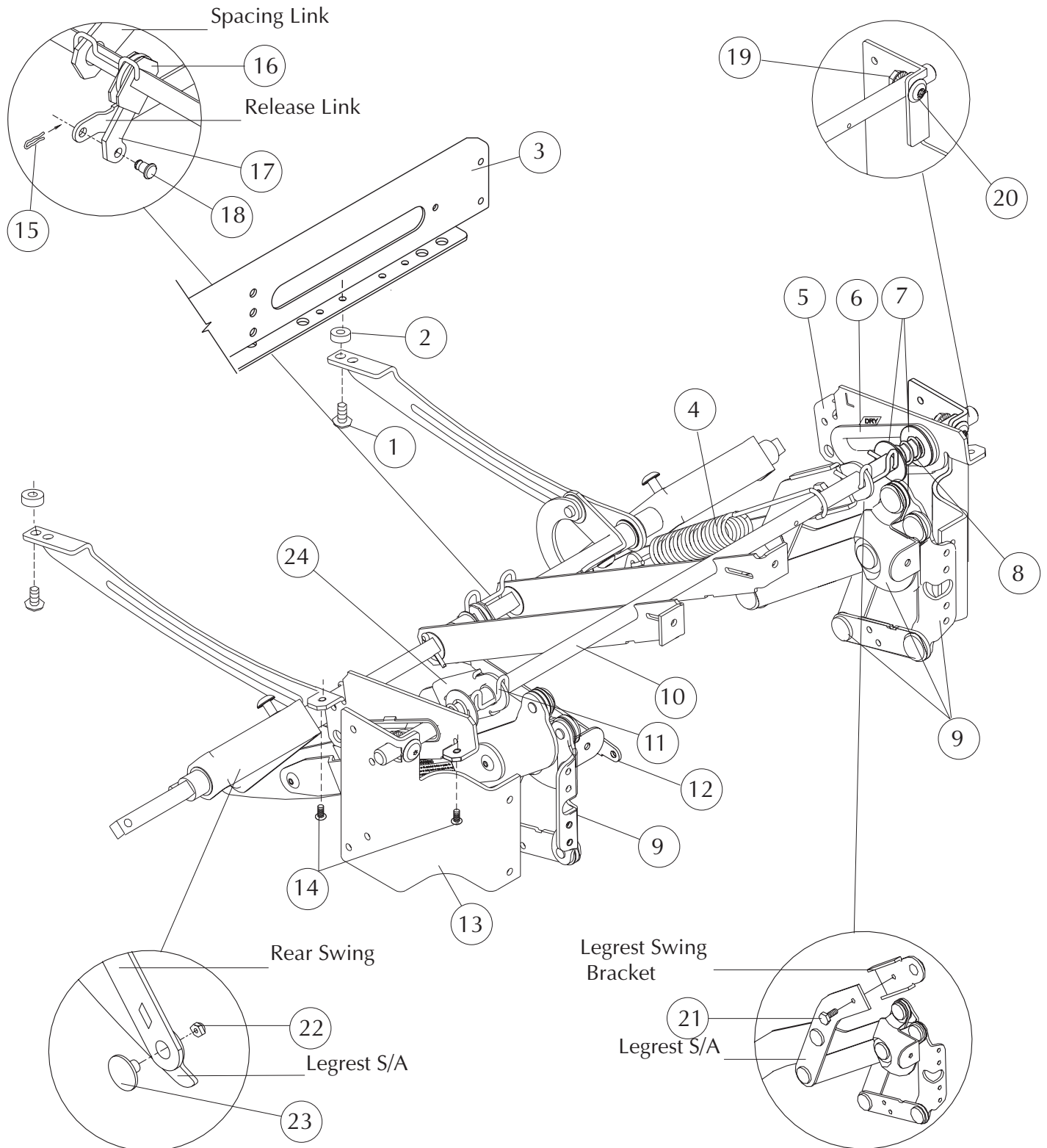
STRYKER MEDICAL SYMMETRY 2 SERIES

Note: When replacing parts, specify style and acknowledgment numbers.

DETAIL	SYK P/N	LELAND P/N	DESCRIPTION	QTY.
1	3300-012-301	95000123-01	Bearing, Medium	5
2	3300-031-900	96000319-00	Flange Nut	4
3	3300-007-607	96000076-07	1/4-20 x 3/4" Serrated Truss Head Screw	4
4	3300-027-800	72000278-00	Drive Shaft Support, Rear	2
5	3300-012-300	95000123-00	Bearing, Large	3
6	3300-004-102	96000041-02	Cotter Pin	2
7	3300-014-400	12000144-00	Trip Lever	1
8	3300-012-600	12000126-00	Retaining Ring Spacer	1
9	3307-072-505	12000725-05	Drive Rod	1
10	3307-041-600	12970416-00R	Toggle Link Subassembly	1
11	3307-029-100	12970291-00	Rear Swing Subassembly	2
12	3300-105-800	15001058-00	Nylon Bearing	4
13	3300-007-606	96000076-06	1/4-20 x 1/2" Serrated Truss Head Screw	1
14	3300-727-900	12000279-00L	Spacing Link	1
15	3300-927-900	12000279-00R	Spacing Link	1
16	3300-015-500	12000155-00	Swivel Lever	1

LY57335 / 3300-000-050

SUPPORT SHAFT/DRIVE ROD ASSEMBLY



LY57335

STRYKER MEDICAL SYMMETRY 2 SERIES

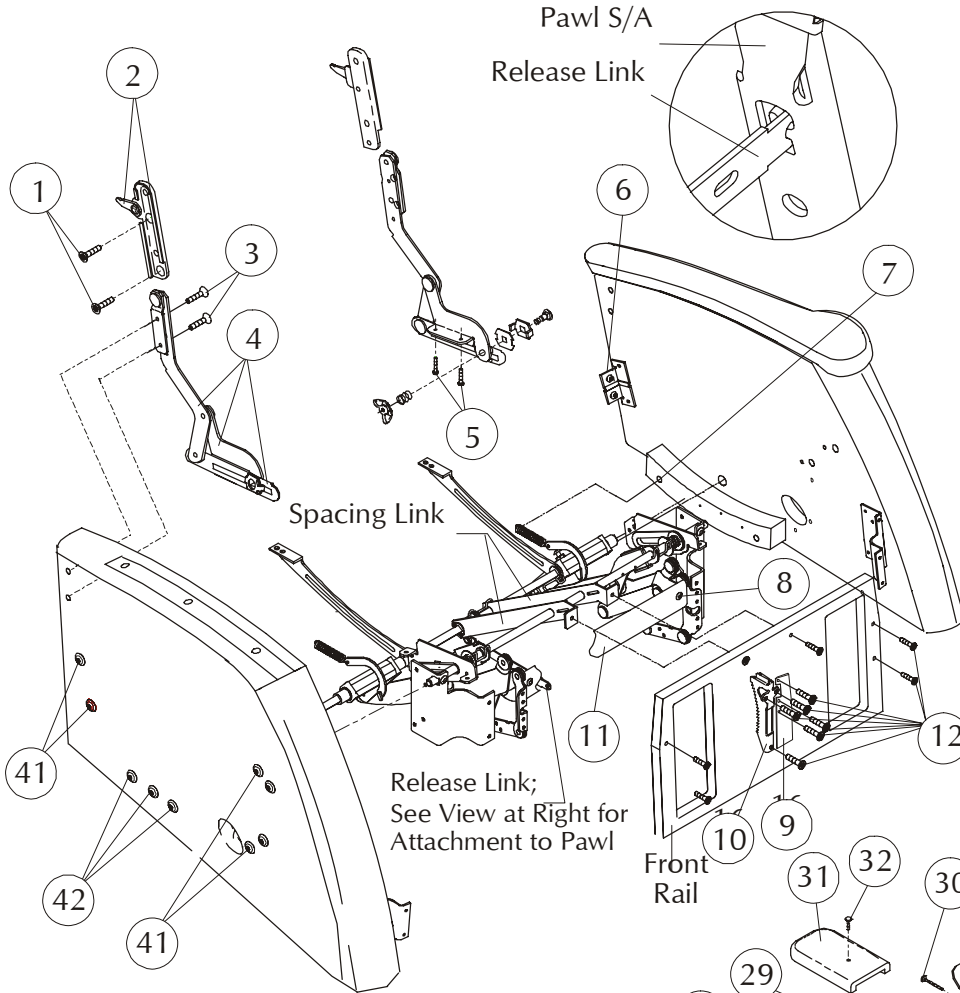
Note: When replacing parts, specify style and acknowledgment numbers.

DETAIL	SYK P/N	LELAND P/N	DESCRIPTION	QTY.
1	3300-007-606	96000076-06	1/4-20 x 1/2" Serrated Truss Head Screw	2
	3300-007-604	96000076-04	1/4-20 x 1" Serrated Truss Head Screw	2
2	3300-046-803	96000468-03	Spacer	2
3	3307-034-401	12970344-01	Metal Rear Rail Subassembly	1
4	3300-069-100	92000691-00	Extension Spring	1
5	3300-713-001	12000130-01L	Front Seat Slide	1
	3300-913-001	12000130-01R	Front Seat Slide	1
6	3300-003-100	5000031-00	Slide Insert	2
7	3300-035-001	96000350-01	Friction Washer	4
8	3300-018-600	92000186-00	Spring	2
9	3307-726-301	622970263-01L/R	Legrest Subassembly, Reinforced	1 ea
	3307-926-301			
10	3309-071-700	12000717-00	Support Shaft	1
11	3300-015-800	12000158-00	Spacing Clip	2
12	3300-022-800	12000228-00	Release Link	1
13	3309-722-900	12000234-00L/R	Offset Front Rail Mount	1 ea
	3309-922-900			
14	3300-000-803	96000008-03	#10-12 x 1 1/4" Pan Head Screw	4
15	3300-015-900	22000159-00	Hair Pin Clip	1
16	3300-014-400	12000144-00	Trip Lever	1
17	3300-015-500	12000155-00	Swivel Lever	1
18	3300-016-100	12000161-00	Connecting Rivet	1
19	3300-031-900	96000319-00	Flange Nut	2
20	3300-039-800	96000398-00	1/4-20 x 15/16" Torx Truss Head Screw (Washer Head)	2
21	3300-048-900	96000489-00	1/4-20 x 1/2" Serrated Hex Head Screw	2
22	3300-028-000	96000280-00	5/16-24 Locknut	2
23	3300-005-401	16000054-01	Shoulder Bolt	2
24	3300-023-001	12000230-01	Legrest Swing Bracket	2

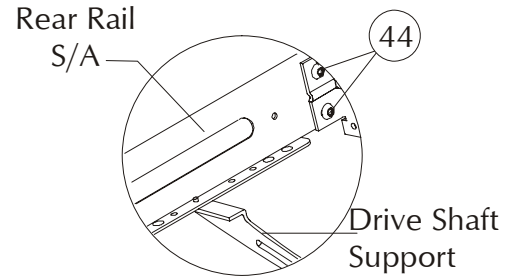
LY57335 / 3300 - 000 - 050

BODY ASSEMBLY

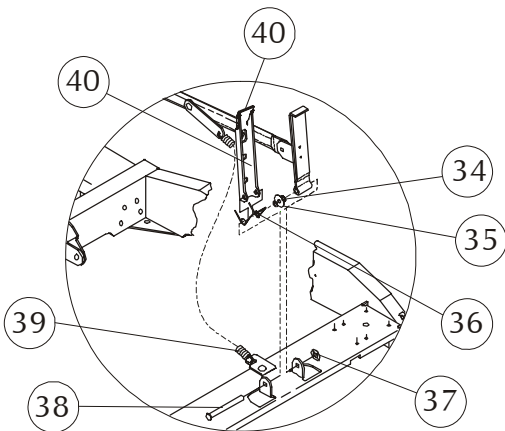
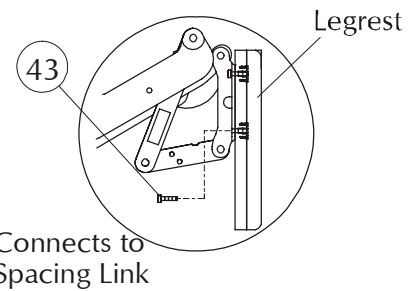
Release Link Attachment View



Rear Rail View

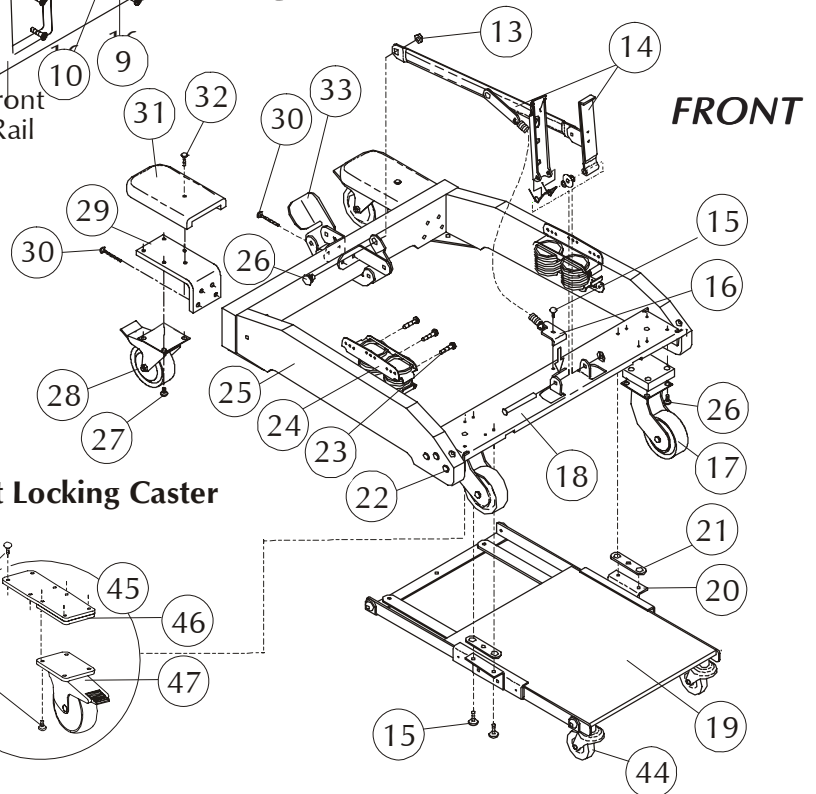
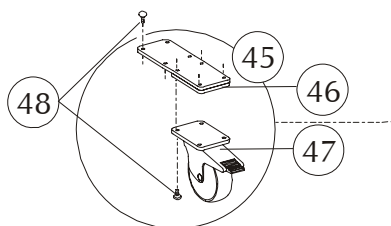


Legrest Side View



Pawl Attachment View

Front Locking Caster



LY57335
**STRYKER MEDICAL SYMMETRY 2 SERIES
BODY ASSEMBLY**

Note: When replacing parts, specify style and acknowledgment numbers.

DETAIL	SYK P/N	LELAND P/N	DESCRIPTION	QTY.
1	3300-001-303	96000013-03	¼ -20 x 1¼ " Torx Flat Head Screw	4
2	3309-707-900	92970079-00L/R	Back Bracket Subassembly	1 ea
	3309-907-900			
3	3300-001-302	96000013-02	¼ -20 x 1" Torx Flat Head Screw	4
4	3307-709-002	12970090-02L/R	Seat Swing Subassembly	1 ea
	3307-909-002			
5	3300-000-803	96000008-03	#10-12 x 1¼ " Torx Pan Head Screw	4
6	3300-027-301	12000273-01	Rear Rail Bracket	2
7	3300-048-901	96000489-01	¼ -20 x 1 ³ / ₁₆ " Serrated Hex Head Screw	4
8	3300-026-100	96000261-00	¼ -20 x 3 ³ / ₈ " Torx Truss Head Screw	2
9	3300-021-200	62000212-00	Locking Bracket	1
10	3300-010-601	12000106-01	Center Ottoman	1
11	3300-102-600	12001026-00	Pawl Rack	1
12	3300-035-702	96000357-02	¼ -20 x 1" Modified Torx Flat Head Screw	12
13	3300-028-000	96000280-00	Lock Nut	1
14	3307-012-200	62970122-00	Upper Connecting Link Subassembly	1
15	3300-007-606	96000076-06	1/4-20 x 1/2 " Serrated Truss Head Screw	5
16	3300-004-800	42000048-00	Spring Attaching Bracket	1
17	3307-051-300	62970513-00	3" Wheel w/Bracket Assembly	2
18	3300-021-500	62000215-00	Base Front Rail	1
19	3307-025-300	62970253-00	Foot Tray Subassembly	1
20	3307-012-400	62970124-00L/R	Footboard Support Bracket Subassembly	1 ea
	3307-912-400			
21	3300-013-400	42000134-00	Spring Connection Link	2
22	3300-039-802	96000398-02	1/4-20 x 1 1/4 " Truss Head Screw (Washer Head)	6
23	3300-000-802	96000008-02	#10-12 x 7/8" Torx Pan Head Screw	12
24	3300-020-800	92000208-00	Rocker Spring; Dual Restricted	2
25	3300-005-401	16000054-01	Shoulder Bolt	1
26	3300-007-607	96000076-07	1/4-20 x 3/4" Serrated Truss Head Screw	16
27	3300-018-401	62000184-01	Lock-Type Swivel Caster	2
28	3300-022-300	62000223-00	Rear Caster Attachment Bracket	2
29	3300-002-408	96000024-03	1/4-20 x 1 3/4 " Torx Serrated Truss Head Screw	10
30	3309-029-301	61990293-01*	Base Caster Trim, Finished	2
31	3300-016-803	96000168-03	1/4-20 Joint Connection Bolt	2
32	3307-012-300	62970123-00	Foot Latch Subassembly	1
33	3300-007-100	96000071-00	Nylon Washer	2
34	3300-000-700	96000007-00	Spacer Washer	1
35	3300-014-100	12000141-00	Dual Torsion Spring	1
36	3300-027-101	96000271-01	Speed Nut	1
37	3300-004-103	16000041-03	3 1/8" Clevis Pin	1
38	3300-105-901	92001059-01	3 11/16" Extension Spring-Black	1
39	3300-039-801	96000398-01	1/4-20 x 1 1/16" Torx Truss Head Screw	12
40	3300-003-306	96000033-02	#10-12 x 1 1/2" Torx Truss Head Screw	6
41	3300-001-702	96000017-02	#10-24 x 3/4" Torx Pan Head Screw	4
42	3300-027-301	12000273-01	Rear Rail Bracket	2
43	3300-048-901	96000489-01	1/4-20 x 1 3/16" Ser. Hex Head Screw See General Information	4
44	3300-042-700	62000427-00	Foot Tray Caster	2
45	3309-045-300	62970453-00	Front Locking Caster Kit (Option) See General Information	1
46	3300-064-300	62000643-00	Caster Mounting Plate (Option (pt. of det. 45))	2
47	3300-064-100	62000641-00	Rigid Locking Caster (Option (pt. of det. 45))	2
48	3300-039-800	96000076-06	1/4 -20 x 1/2" Ser. Hex Head Screw (Option) (pt. of det. 45)	16

* Indicate finish or color when ordering.

LY57335

Dimensions:	Back Height from Floor	43.50"																												
	Back Height from Seat	29.50"																												
	Seat Width	22.00"																												
	Seat Height from Floor	19.88"																												
	Seat Depth	19.75"																												
	Arm Height from Floor	26.75"																												
	Overall Width	32.00"																												
	Overall Depth	39.00"																												
	Reclined Depth	52.00"																												
	Reclined Depth, legrest extended	68.00"																												
	Weight	115 lbs.																												
Finish:	Type of Finish	High Solids Catalyzed Lacquer																												
	Available Colors	<table border="0"> <tr> <td>150</td> <td>Hard Rock Maple</td> <td>051</td> <td>Natural</td> </tr> <tr> <td>154</td> <td>Fine Oak</td> <td>431</td> <td>Dark Cherry</td> </tr> <tr> <td>151</td> <td>Port Maple</td> <td>143</td> <td>White Blush</td> </tr> <tr> <td>152</td> <td>Wild Cherry</td> <td>435</td> <td>Classic Cherry</td> </tr> <tr> <td>447</td> <td>Cayenne Maple</td> <td></td> <td></td> </tr> <tr> <td>448</td> <td>Honey Maple</td> <td></td> <td></td> </tr> <tr> <td>449</td> <td>Select Cherry</td> <td></td> <td></td> </tr> </table>	150	Hard Rock Maple	051	Natural	154	Fine Oak	431	Dark Cherry	151	Port Maple	143	White Blush	152	Wild Cherry	435	Classic Cherry	447	Cayenne Maple			448	Honey Maple			449	Select Cherry		
150	Hard Rock Maple	051	Natural																											
154	Fine Oak	431	Dark Cherry																											
151	Port Maple	143	White Blush																											
152	Wild Cherry	435	Classic Cherry																											
447	Cayenne Maple																													
448	Honey Maple																													
449	Select Cherry																													
Frame Construction:	Frame Material	Furniture grade plywood and hardwood																												
	Frame Construction	Double doweled and glued																												
	Arm Material	Molded Maple innerplies with Northern Red Oak face and back																												
Seat Construction:	Frame Material	Hardwood																												
	Frame Construction	Double doweled and glued																												
	Suspension	Sinuuous wire springs, crossbrace wire and composition pad																												
	Seat Foam	Polyurethane foam MFG-30-24-1.80, 24 lb ILD, 1.80-1.90 density																												
Back Construction:	Frame Material	Hardwood																												
	Frame Construction	Double doweled and glued																												
	Suspension	Sinuuous wire springs, crossbrace wire and composition pad																												
	Foam Type	Polyurethane foam MFG-7-20, 20 lb ILD, 1.0-1.25 density																												
Upholstery Details:	Patterns Available	Fabric, vinyl, C.O.M.																												
Test Data:	Fabric Tests	Consult specific fabric card																												
	BIFMA Tests	Meets ANSI/BIFMA X5.4 - 1990 American National Standard for Office Furnishings -Lounge Seating. Tests conducted in accredited test facility.																												
	Flammability Tests	Meets BIFMA First Generation Voluntary Upholstered Furniture Flammability Standard for Business and Institutional Markets, F1-1978-revised 1980. California Bureau of Home Furnishings - Technical Bulletin 117. Meets Flammability Requirements of California Bureau of Home Furnishings Technical Bulletin 133 when ordered with La-Z-Boy Code Red Fabrics and Vinyl's. Consult a La-Z-Boy Customer Service Representative for further information.																												
		Upholstered Furniture Action Council Class 1.																												

Three Piece Rear Rail:

Four Hex Head Screws are used to attach the Metal Rear Rail to the Rear Rail Brackets. The screws are installed in a counterclockwise direction starting with the upper slot in the left (when sitting). Do not tighten this screw completely until the other three screws are installed and fastened firmly. The upper right, lower right and lower left screws are tightened when they are installed.

Rigid Locking Caster Option

62970453-00 includes:

- | | |
|-----------------------------------|-------------|
| (2) Rigid Locking Caster | 62000641-00 |
| (2) Caster Mounting Plate | 62000643-00 |
| (16) 1/4-20x1/2"TorxFatHeadScrews | 96000076-06 |

Lock Down Back Service Kit

62970422-00 includes:

- | | |
|---|--------------|
| (1) Back Bracket Assembly | 92970079-00L |
| (1) Back Bracket Assembly | 92970079-00R |
| (1) Lock Bar | 62000488-00 |
| (2) 1/4-20 x 3/4" Torx Flat Head Screws | 96000013-01 |
| (2) Black Elastic Straps | 94000005-01 |

Hinged Folding Push Bar Kit

WB1 /WB4 includes:

- | | |
|--|-------------|
| (1) Push Bar/Hinge S/A | 62970504-03 |
| (2) Nylon Washer | 96000071-00 |
| (2) Recessed Bumper | 65000273-00 |
| (2) #10-18 x 3/4" Phillips Head Screws | 96000200-01 |
| (4) 1/4-20 x 2 1/2" Torx Head Screws | 96000016-05 |
| (2) Decorative Cap Nut | 65000290-00 |
| (2) Rubber Washer | 65000292-00 |

Repair Instructions, part #63000585-01

If the dealer complains that the unit is making a loud "squeaking" noise when the chair rocks, order:

- | | |
|-------------------|-------------|
| (1) Speed Nut | 96000271-01 |
| (1) Nylon Washer | 96000071-00 |
| (1) Spacer Washer | 96000007-00 |