

## Nära® Hospital Bassinet

### Maintenance Manual

**REF** 4402-000-001

**REF** 4402-000-002





# Table of Contents

Warning/Caution/Note Definition .....	2
Pinch points.....	2
Introduction for service .....	3
Expected device life .....	3
Contact information.....	3
Serial number location.....	3
Unit number.....	4
Preventive maintenance .....	5
Service .....	6
Cradle top cover removal/replacement .....	6
Cradle bottom cover replacement.....	7
Push bar replacement .....	10
Caster replacement.....	13
Drawer slide replacement .....	14
Gas cylinder replacement .....	15
Base cover replacement.....	18
Top level assembly - 4402-100-001 .....	20
Bassinet assembly - 4402-010-001 .....	21
Base assembly - 4402-001-001.....	23
International top level assembly - 4402-100-002 .....	26
International bassinet assembly - 4402-010-009 .....	27
International base assembly - 4402-001-007 .....	29
Cabinet-drawer assembly - 4402-050-001 .....	32
Drawer assembly - 4402-050-002 .....	33
Document holder assembly - 4402-050-007 .....	34
Cradle assembly - 4402-010-002 .....	35

# Warning/Caution/Note Definition

The words **WARNING**, **CAUTION**, and **NOTE** carry special meanings and should be carefully reviewed.

## WARNING

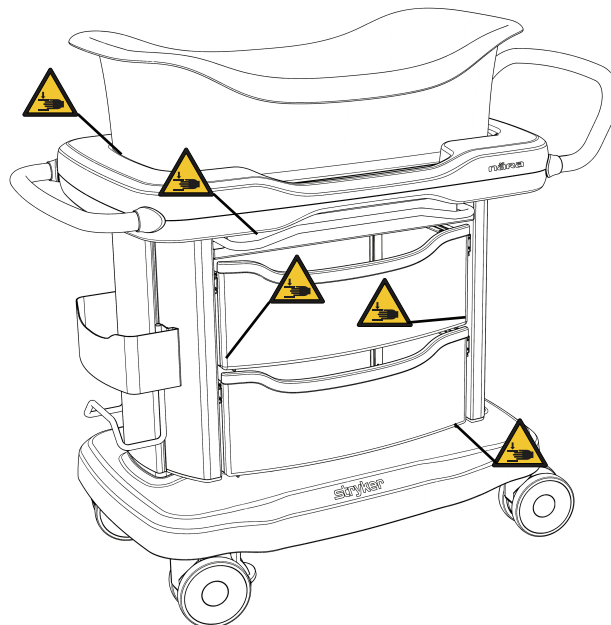
Alerts the reader about a situation which, if not avoided, could result in death or serious injury. It may also describe potential serious adverse reactions and safety hazards.

## CAUTION

Alerts the reader of a potentially hazardous situation which, if not avoided, may result in minor or moderate injury to the user or patient or damage to the product or other property. This includes special care necessary for the safe and effective use of the device and the care necessary to avoid damage to a device that may occur as a result of use or misuse.

**Note** - Provides special information to make maintenance easier or important instructions clearer.

## Pinch points



## Introduction for service

This manual assists you with the service of your Stryker product. Read this manual to service this product. This manual does not address the operation of this product. See the Operations Manual for operating and use instructions. To view your Operations Manual online, see <https://techweb.stryker.com/>.

## Expected device life

The **Nära** Hospital Bassinet has a five year expected service life under normal use conditions and with appropriate periodic maintenance.

## Contact information

Contact Stryker Customer Service or Technical Support at: 1-800-327-0770.

Stryker Medical  
3800 E. Centre Avenue  
Portage, MI 49002  
USA

To view your operations or maintenance manual online, see <https://techweb.stryker.com/>.

Have the serial number (A) of your Stryker product available when calling Stryker Customer Service or Technical Support. Include the serial number in all written communication.

## Serial number location

You can find the serial number inside the cabinet (A), opposite the chart holder (Figure 1).

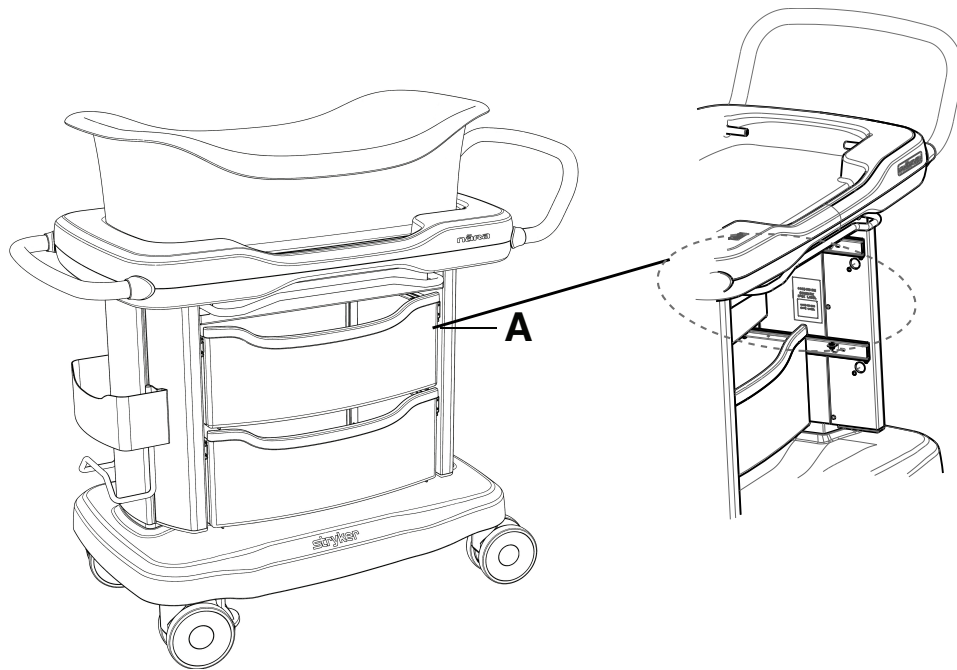
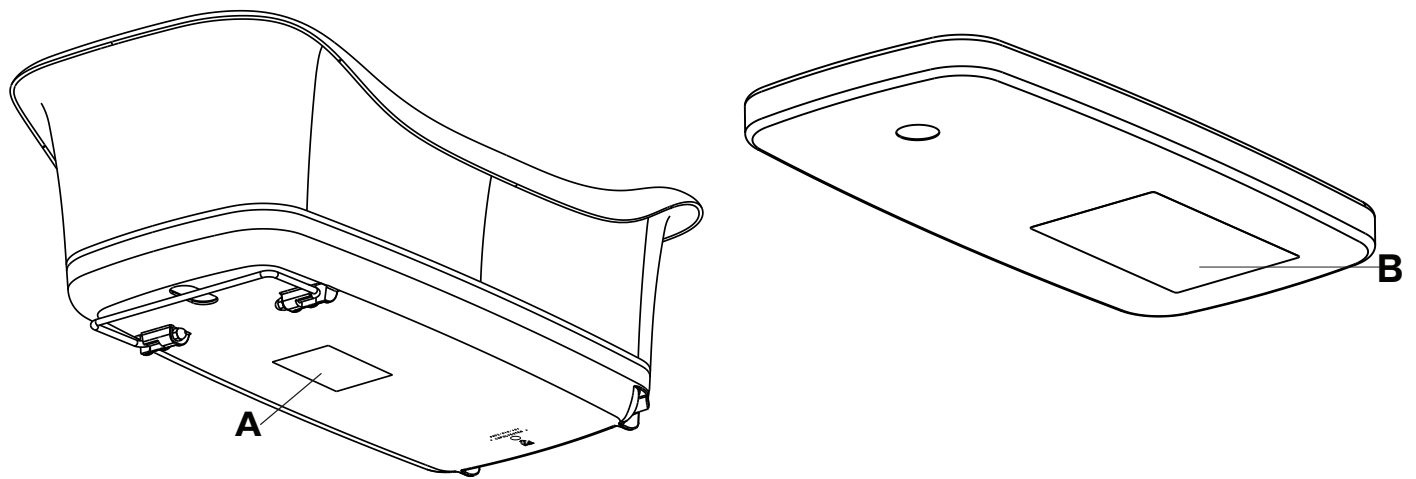


Figure 1 – Serial number location

## Unit number

Have the unit number of your basket (A) or mattress (B) available when calling Stryker Customer Service or Technical Support. Include the unit number in all written communication.



# Preventive maintenance

Remove product from service before you perform the preventive maintenance inspection. Check all items listed during annual preventive maintenance for all Stryker Medical products. You may need to perform preventive maintenance checks more often based on your level of product usage. Service only by qualified personnel.

Inspect the following items:

- \_\_\_\_\_ All fasteners are secure
- \_\_\_\_\_ Chart holder for damage
- \_\_\_\_\_ All four casters swivel
- \_\_\_\_\_ All four casters are free of wax and debris
- \_\_\_\_\_ All mechanisms operate
- \_\_\_\_\_ Two basket retention pins and tilt bar retainer are intact and secure
- \_\_\_\_\_ Retractable work surface is intact and secure
- \_\_\_\_\_ Basket tilt bar is intact
- \_\_\_\_\_ Drawers are intact and slide
- \_\_\_\_\_ Push handles
- \_\_\_\_\_ Height adjustment bars
- \_\_\_\_\_ Bassinet raises and lowers
- \_\_\_\_\_ Mattress for rips, tears, punctures, wear
- \_\_\_\_\_ Base cabinet for cracks or damage
- \_\_\_\_\_ Labels for legibility, proper adherence, and integrity

Product serial number:
Completed by:
Date:

# Service

## Cradle top cover removal/replacement

### Tools required:

- 3/16" Hex wrench
- 3/8" Nut driver

### Procedure:

1. Apply the brakes.
2. Remove the basket from the product.
3. Using a 3/16" hex wrench, remove the two yellow basket pivot pins (W and Y) (Figure 2) from the top cover. Save the pivot pins.

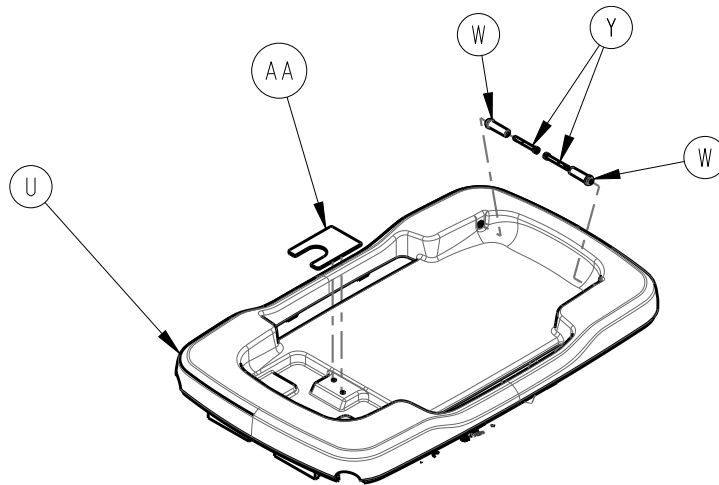
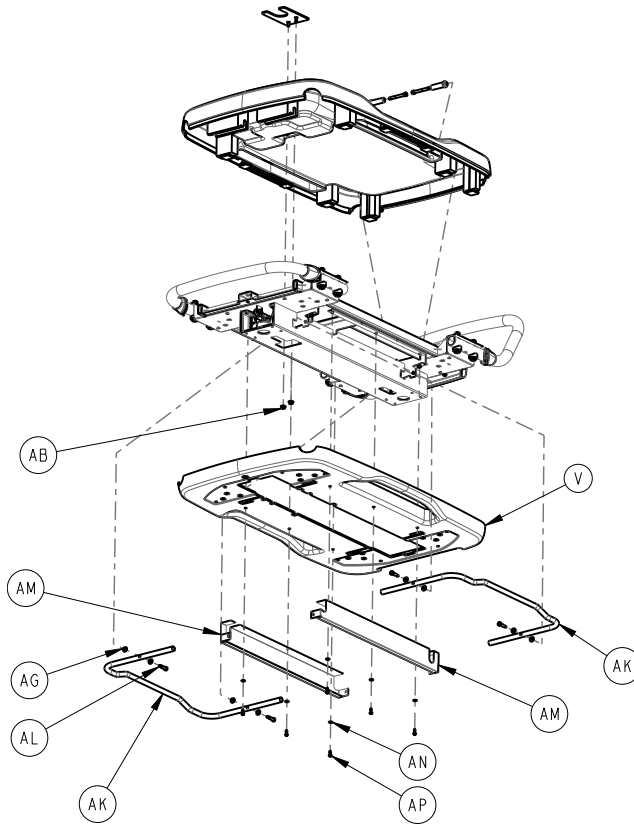


Figure 2 – Cradle top

4. Access the nuts (AB) (Figure 3) that secure the basket trend catch (AA) to the top cover. Open the top and bottom drawer and look through the cutout directly underneath the trend catch (AA).





**Figure 3 – Basket trend catch**

5. Using a 3/8" nut driver, remove the two nuts (AB) that secure the trend catch (AA). Save the nuts.
6. Grasp both sides of the top cover cradle (U) and pull up until the bottom and the top cover **Velcro®** separate.
7. Remove and discard the cradle top cover.
8. Reverse to install.

**Note** - Once the top cover is in place, firmly press on the top cover to secure the **Velcro®**.

9. Verify proper operation before you return the product to service.

## Cradle bottom cover replacement

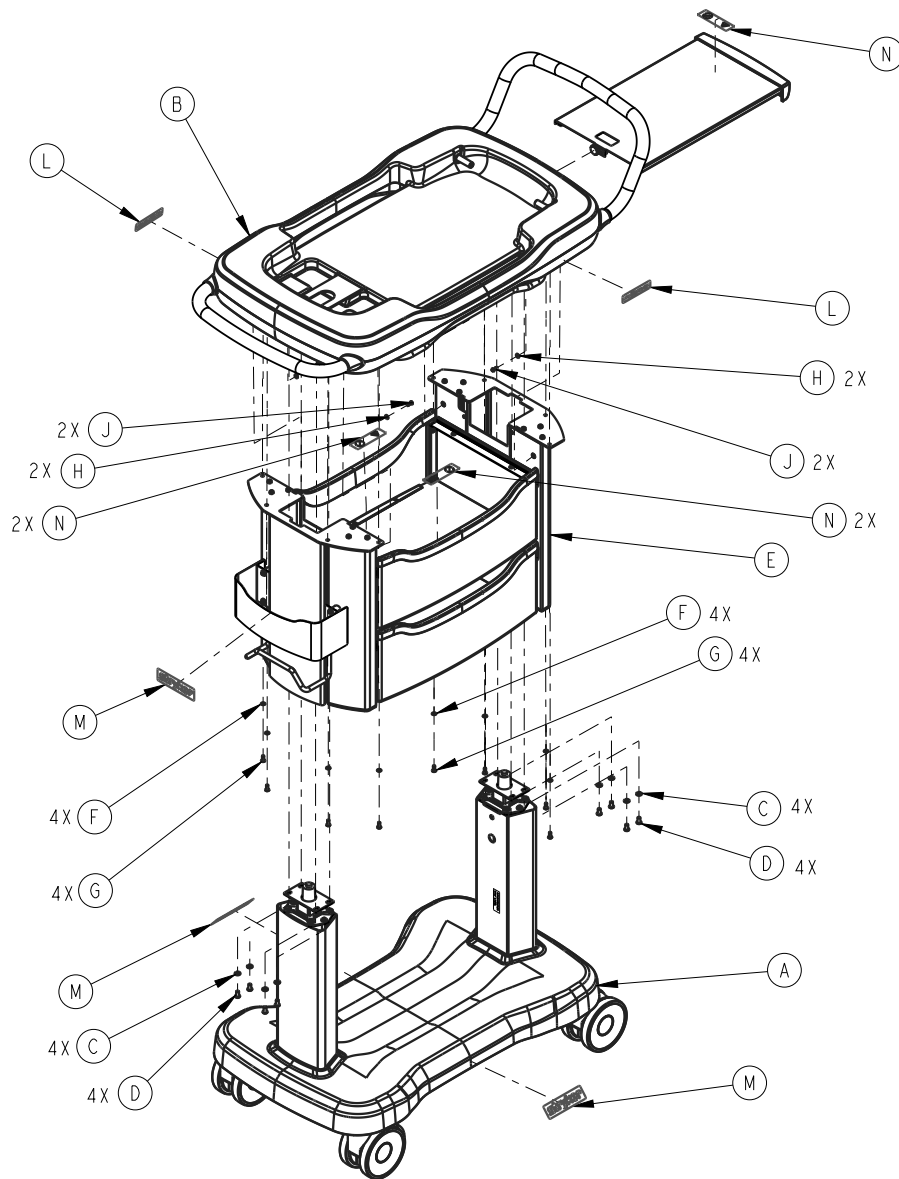
### Tools required:

- 1/8" Hex wrench
- 5/32" Hex wrench
- T15 Torx driver
- Rubber hammer

### Procedure:

1. Apply the brakes.
2. Remove cradle top cover. See *Cradle top cover removal/replacement* (page 6).

- Using a 1/8" hex wrench, remove the eight screws (F and G) that secure the column and drawer assembly to the top cradle bracket (Figure 4).



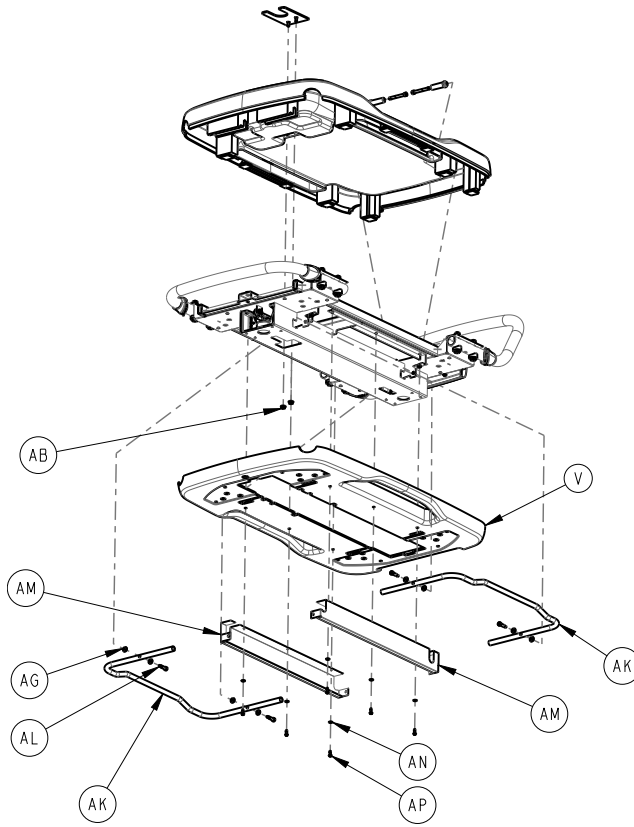
**Figure 4 – Column and drawer assembly**

**Note** - Lower the unit to the lowest height to help minimize the column dropping.

- Using a T15 Torx driver, remove the four screws that secure both columns to each valance bracket.

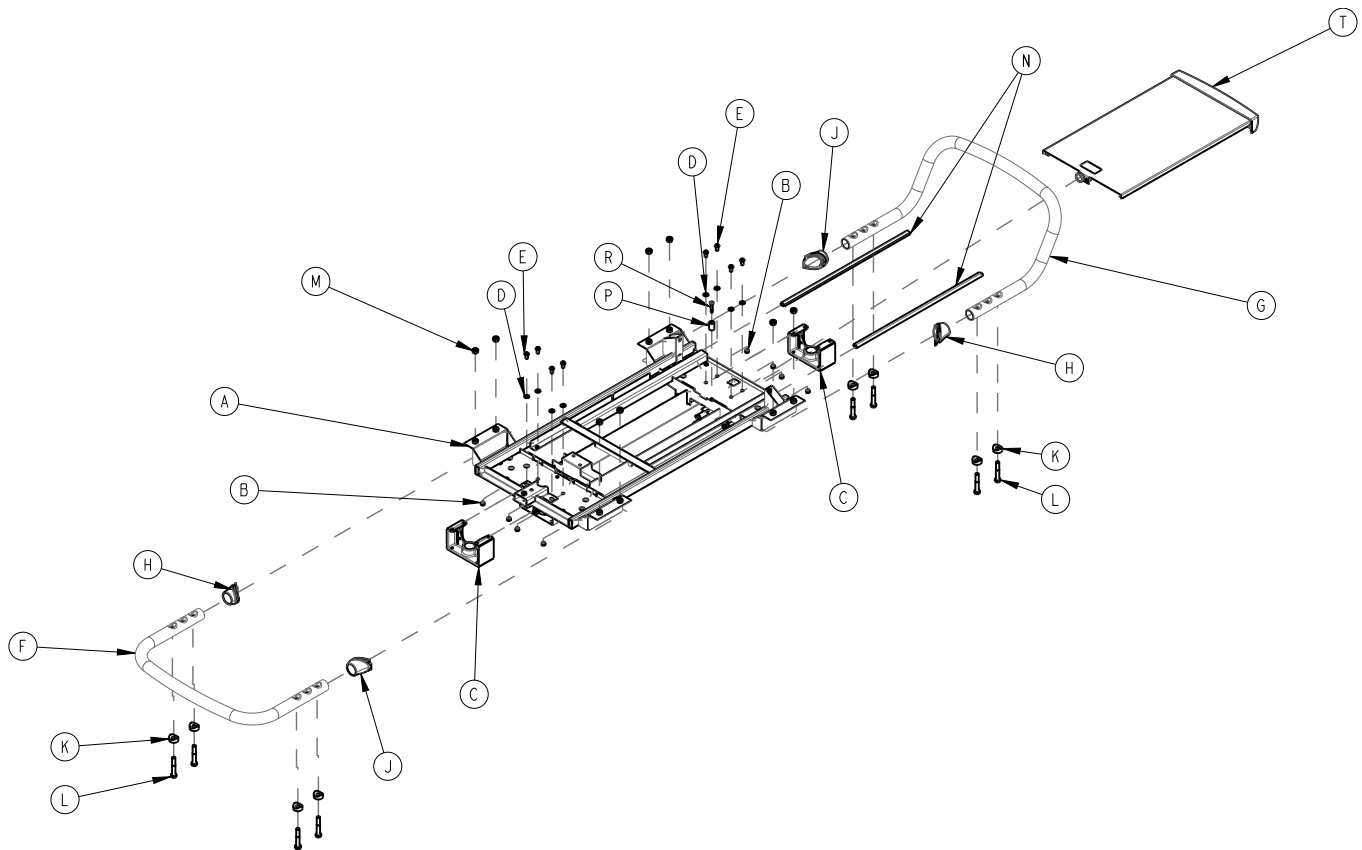
**Note** - The entire column and drawer assembly should now rest on top of the base cover.

- Using a 1/8" hex wrench, remove the two screws (AL) (Figure 5) that secure each release handle to the top cradle bracket. Save the handle and screws.



**Figure 5 – Release handle**

- Using 5/32" hex wrench, remove the four screws (E) and washers (D) (Figure 6) from each cylinder bracket that secure the cylinder to the top cradle bracket. Save the screws and washers.



**Figure 6 – Cylinder bracket**

**Note** - Add loctite blue threadlocker to a minimum of three threads on item L.

7. Using a rubber hammer, strike the top cradle bracket, near the cylinder to disengage the bracket from the cylinder top. Repeat on opposite side.
8. Using a workbench or table, flip the top assembly upside down.
9. Using a T15 Torx driver remove the six screws (AP) and washers (AN) that secure the two valance brackets. Save the screws and washers.
10. Working from one side of the assembly, firmly pull up on the cradle bottom cover.
11. Remove and discard the cradle bottom cover.
12. Reverse to install.
13. Verify proper operation before you return the product to service.

## Push bar replacement

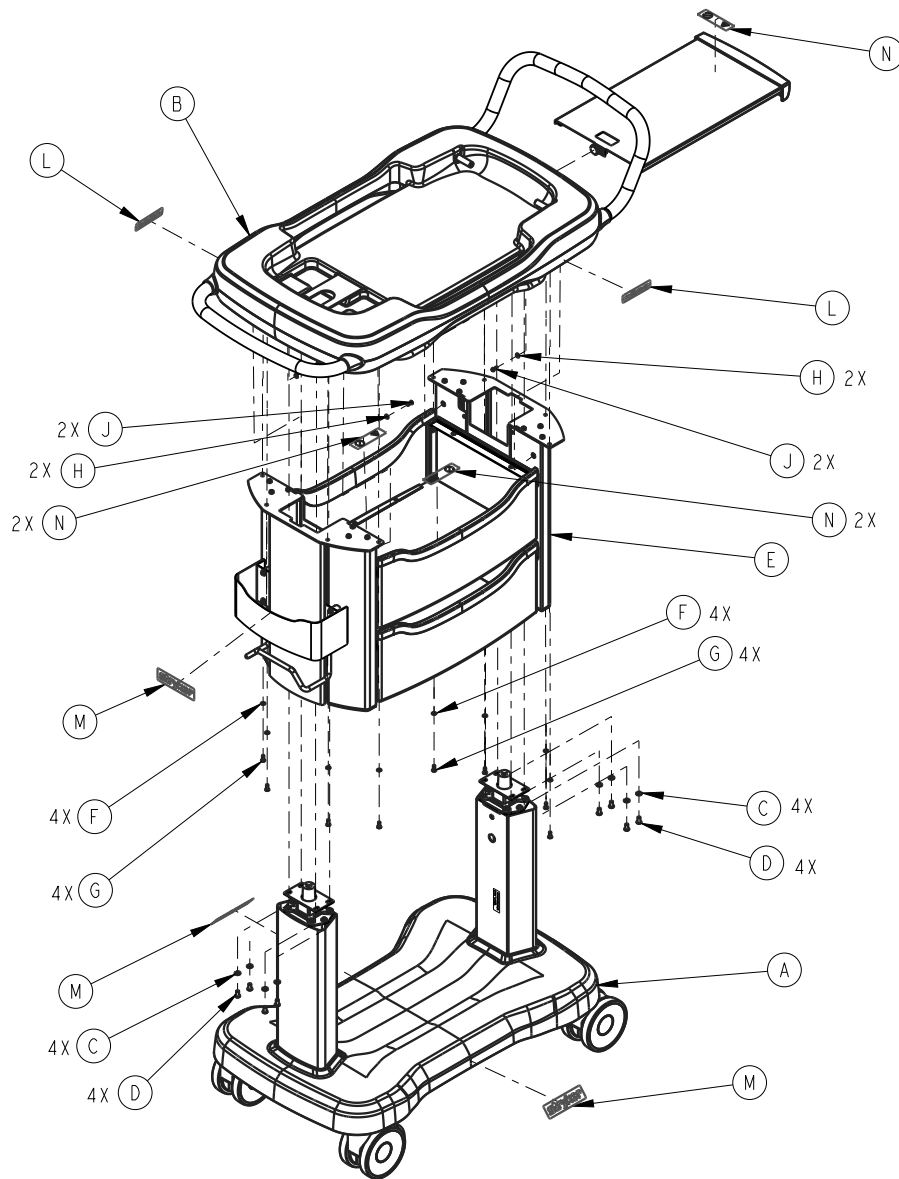
### Tools required:

- 1/8" Hex wrench
- T15 Torx driver
- 1/2" Speed ratchet
- Loctite blue threadlocker

### Procedure:

1. Apply the brakes.
2. Remove the cradle top cover. See *Cradle top cover removal/replacement* (page 6).

- Using a 1/8" hex wrench, remove the eight screws (F and G) (Figure 7) that secure the column and drawer assembly to the top cradle bracket. Save the screws.



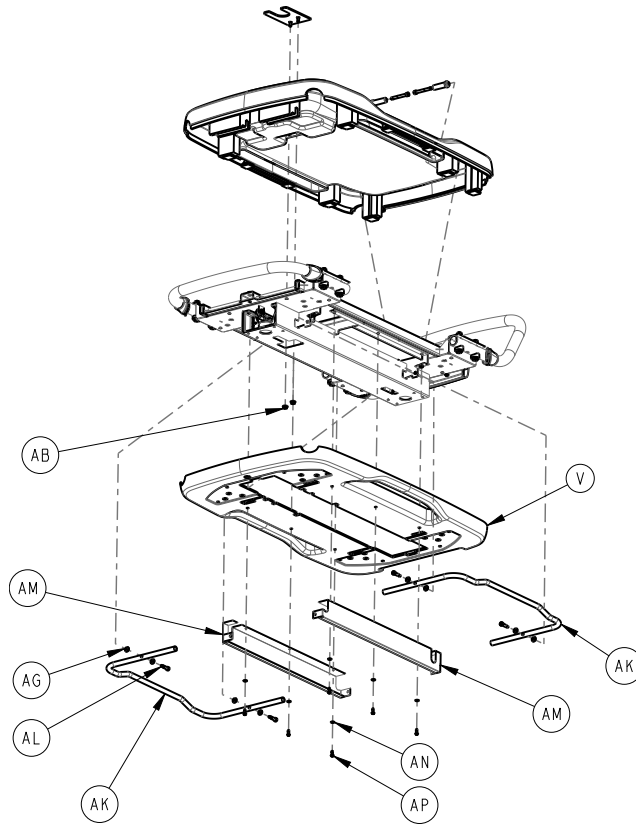
**Figure 7 – Column and drawer assembly**

**Note** - Lower the unit to the lowest height to help minimize the column dropping.

- Using a T15 Torx driver, remove the four screws that secure both columns to each valance bracket. Save the screws.

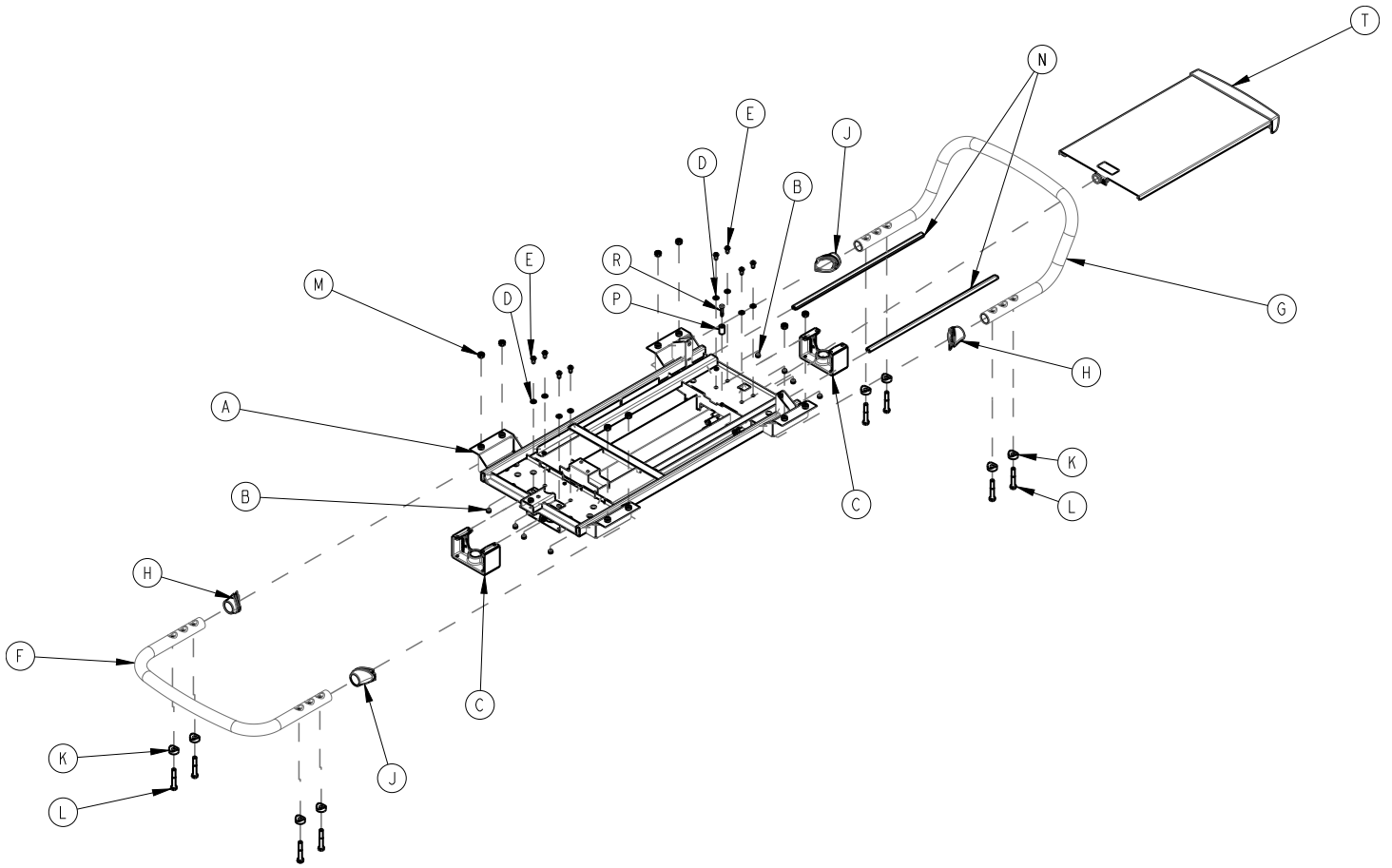
**Note** - The entire column and drawer assembly should now rest on top of the base cover.

5. Using a T15 Torx driver, remove the six screws (AP) and washers (AN) (Figure 8) that secure two valance brackets. Save the screws and washers.



**Figure 8 – Valance brackets**

6. Using a 1/2" speed ratchet remove the four screws (L) and washers (K) (Figure 9) that secure the push bar to the cradle bracket. Save the screws and washers.



**Figure 9 – Push bar**

**Note**

- Carefully pull down on the corner of the cradle bottom cover to gain access to the screws.
- During reinstall, add loctite blue threadlocker to a minimum of three threads on item L.

7. Remove and discard the push bar.

**Note** - Remove and save the two rubber sleeves from the push bar.

8. Reverse to install.

9. Verify proper operation before you return the product to service.

## Caster replacement

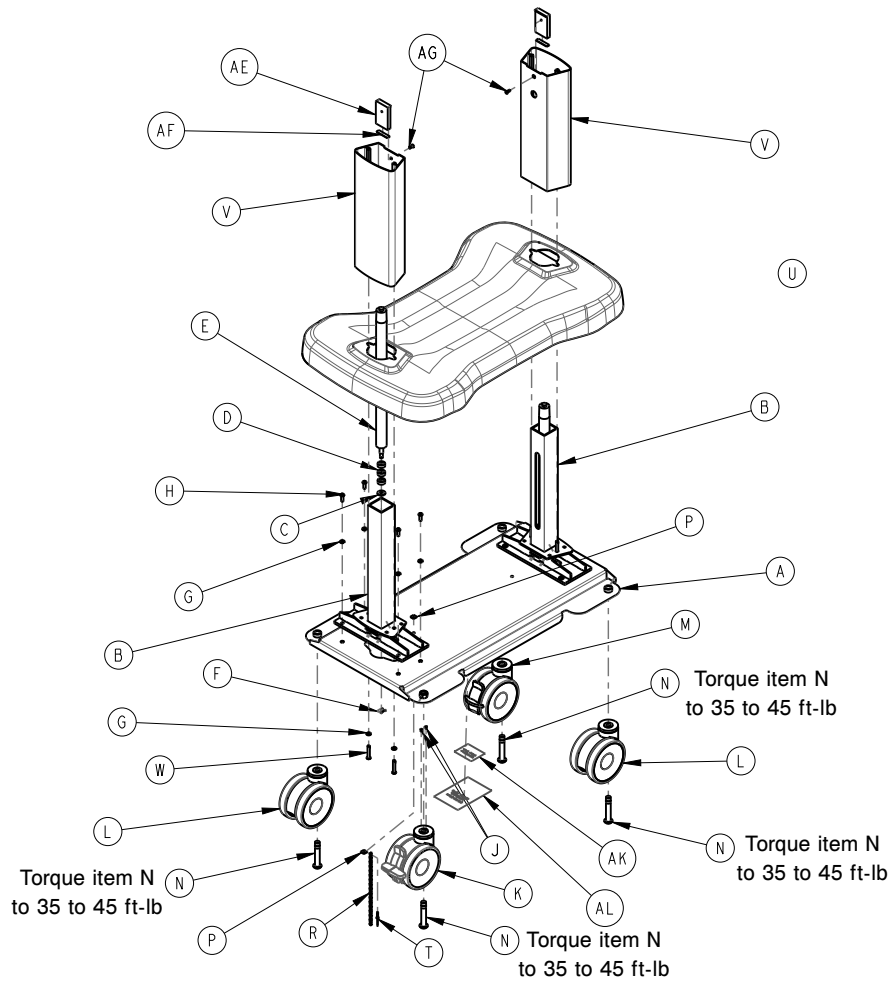
**Tools required:**

- 5/16" Hex driver
- 3/8" Drive ratchet
- Jack
- Torque wrench

**Procedure:**

1. Apply the brakes.
2. Use a small jack, near the caster to be replaced.

- Using a 3/8" drive ratchet and 5/16" hex driver, remove the bolt (N) and caster (K, L, M) (Figure 10) assembly from the base weldment. Discard the caster assembly.



**Figure 10 – Base weldment**

- Reverse to install.
- Verify proper operation before you return the product to service.

## Drawer slide replacement

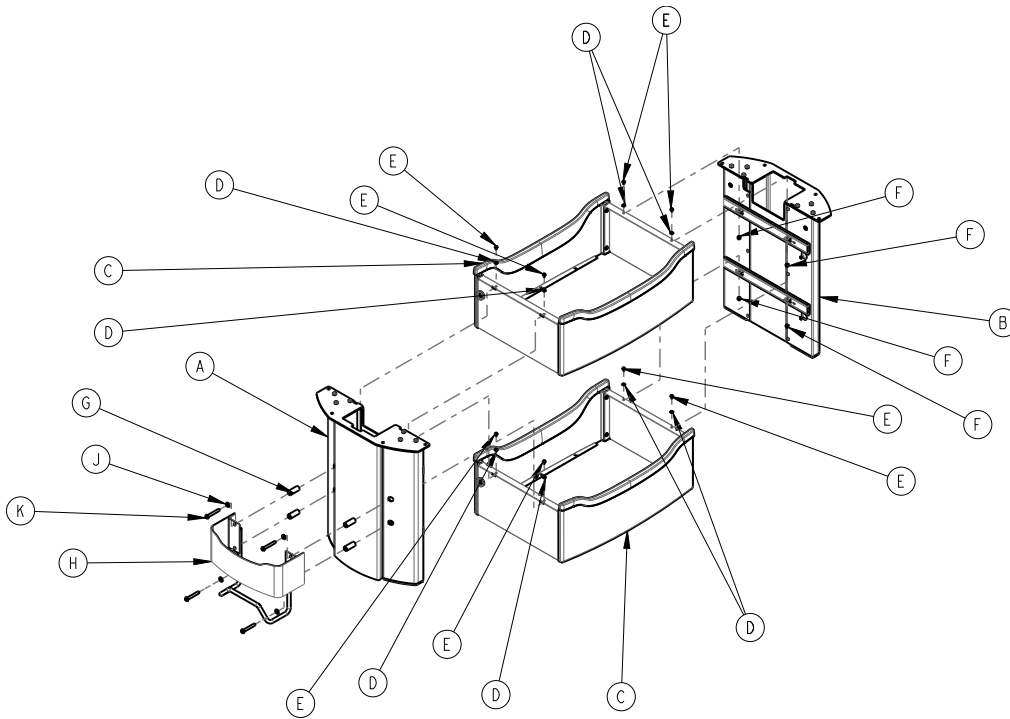
### Tools required:

- T15 Torx driver
- T10 Torx driver
- 5/16" Wrench

### Procedure:

- Apply the brakes.
- Pull open the drawer.
- Using a T10 Torx driver and 5/16" wrench, remove the two screws that secure the drawer slide to the drawer. Save the screws.
- Using a T15 Torx driver, remove the screw (E) and washer (F) (Figure 11) that secure the drawer slide to the column. Save the screw and washer.





**Figure 11 – Drawer slide and columns**

5. Open the same drawer from the opposite side and repeat step 4.
6. From the open drawer, pull the drawer slide tab out of the drawer.
7. Open the same drawer from the opposite side and repeat step 6.
8. Remove and discard the entire drawer slide assembly.
9. Reverse to install.
10. Verify proper operation before you return the product to service.

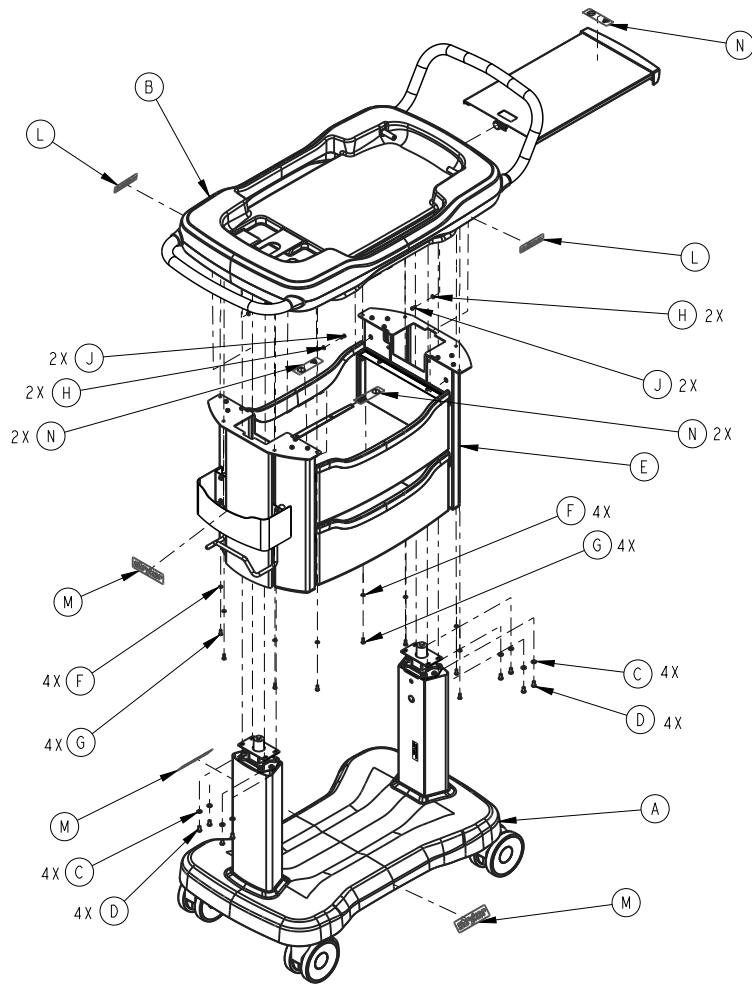
## Gas cylinder replacement

### Tools required:

- 1/8" Hex wrench
- 3/16" Hex wrench
- 5/32" Hex wrench
- T15 Torx driver
- Rubber hammer
- Needle nose pliers

### Procedure:

1. Using a 1/8" hex wrench, remove the eight screws (F and G) (Figure 12) that secure the column and drawer assembly to the top cradle bracket.



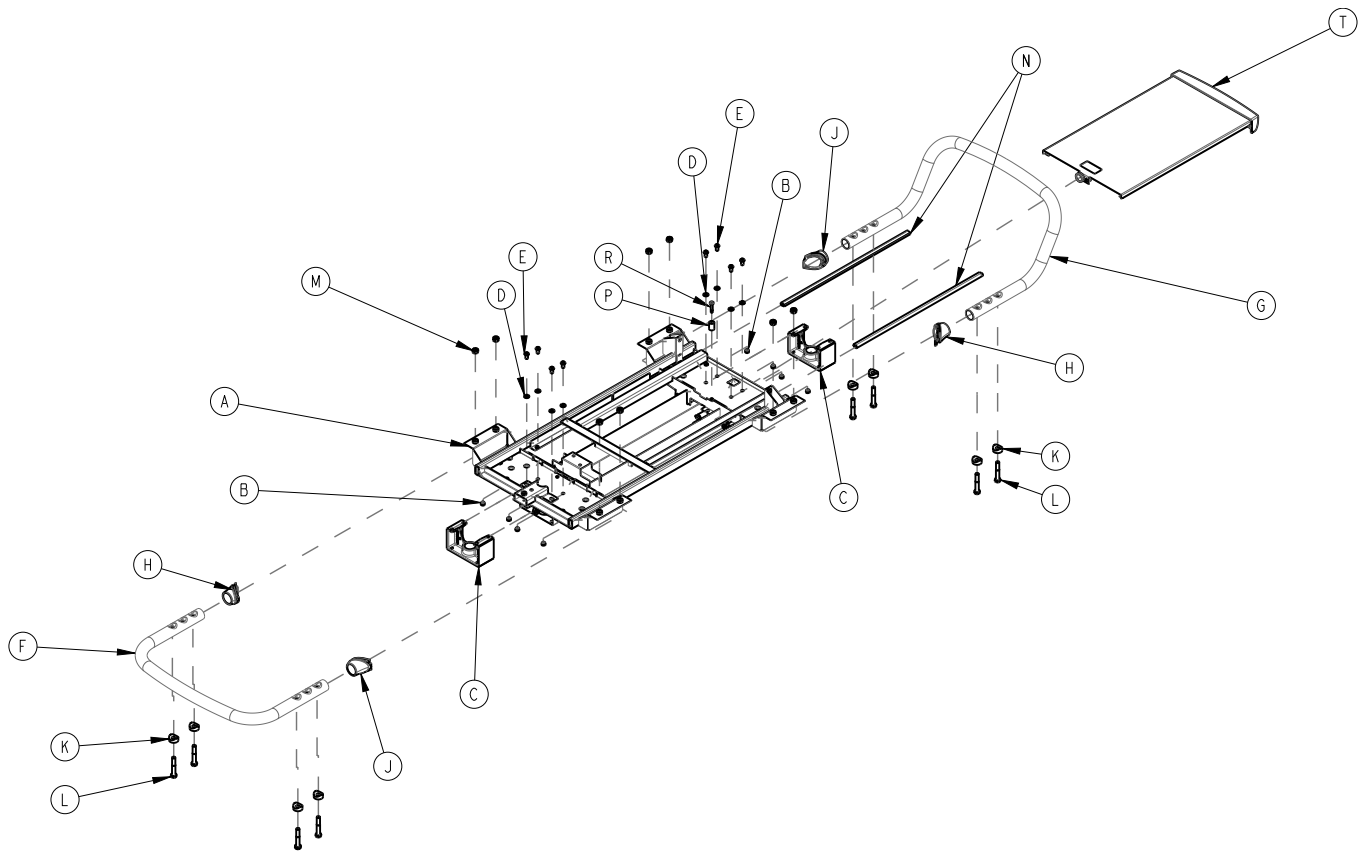
**Figure 12 – Column and drawer assembly**

**Note** - Lower the unit to the lowest height to help minimize the column dropping.

- Using a T15 Torx driver, remove the four screws (E) and washers (D) (Figure 13) that secure both columns to each valance bracket. Save the screws and washers.

**Note** - The entire column and drawer assembly should now rest on top of the base cover.

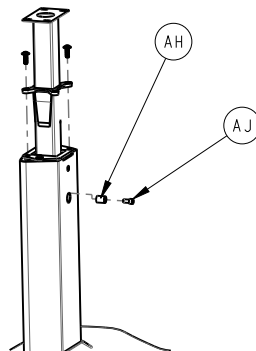
- Using 5/32" hex wrench, remove the eight screws (D) and washers (C) that secure the cylinder bracket to the top cradle bracket for the gas cylinder. Remove both sides. Save the screws and washers.



**Figure 13 – Top cradle bracket**

**Note** - Add loctite blue threadlocker to a minimum of three threads on item L.

4. Using a rubber hammer, strike the top cradle bracket, near the gas cylinder to remove the cradle bracket from the gas cylinder.
5. Remove the cradle assembly and supports to gain access to the gas cylinder. Set aside the cradle assembly.
6. Lift up and remove the cabinet/drawer assembly. Set aside the cabinet/drawer assembly.
7. Using a 5/32" hex wrench, remove the two screws that secure the column support bracket. Save the screws.
8. Using a 3/16: hex wrench, remove the screw (AJ) and spacer (AH) from the lower guide tube (Figure 14). Save the screw and spacer.



**Figure 14 – Column support bracket**

9. Using the needle nose pliers, remove the gas cylinder clip. Save the clip.
10. Grab the shaft of the gas cylinder and pull up to remove the gas cylinder from the base support bracket. Save the washers (D), bumpers (C) and clip (F) for reinstall (Figure 15). Discard the gas cylinder.

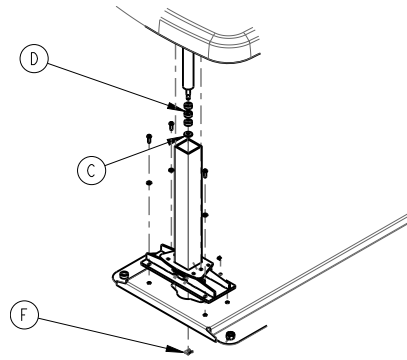


Figure 15 – Gas cylinder shaft

11. Reverse to install.
12. Verify proper operation before you return the product to service.

## Base cover replacement

### Tools required:

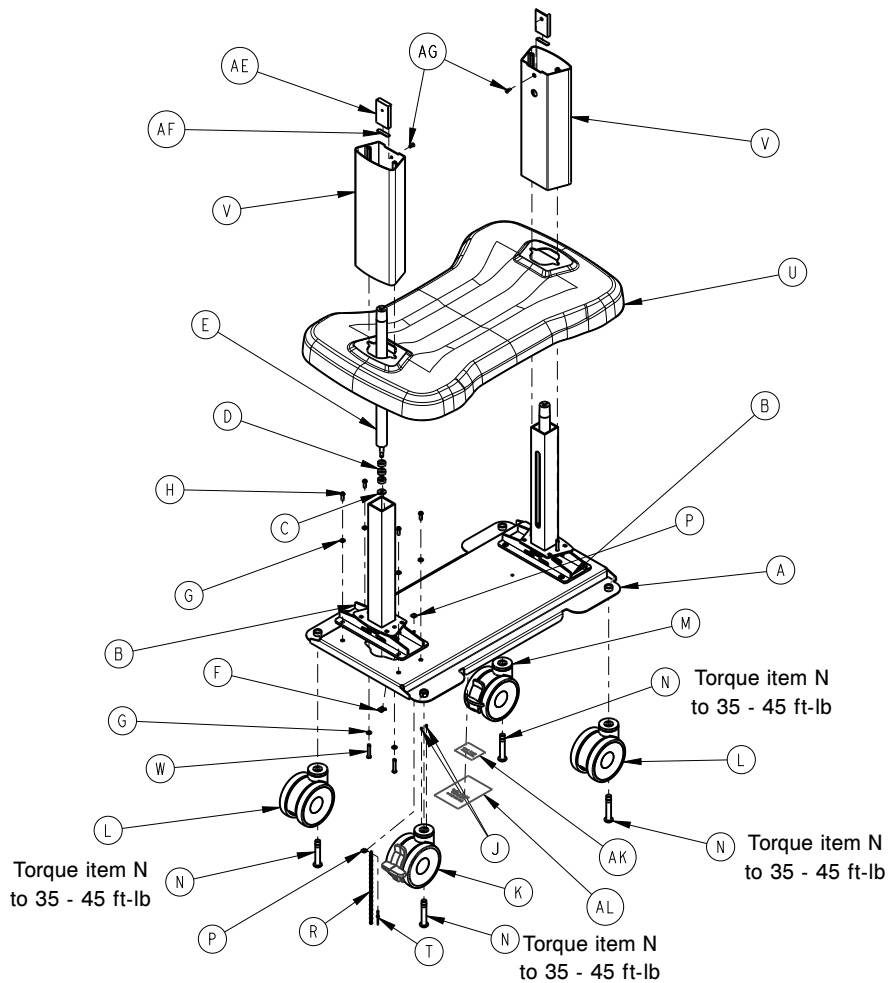
- Small jack
- 5/32 Hex t-handle

### Procedure:

1. Apply the brakes.
2. Using a small jack, at one end of the product, raise the product a few inches off the floor.

**Note** - You can push the product up against a wall for added precaution.

3. Using a 5/32" hex t-handle, remove the two screws (W) and two washers (G) that secure the column to the base weldment. Save the screws and washers (Figure 16).



**Figure 16 – Base weldment**

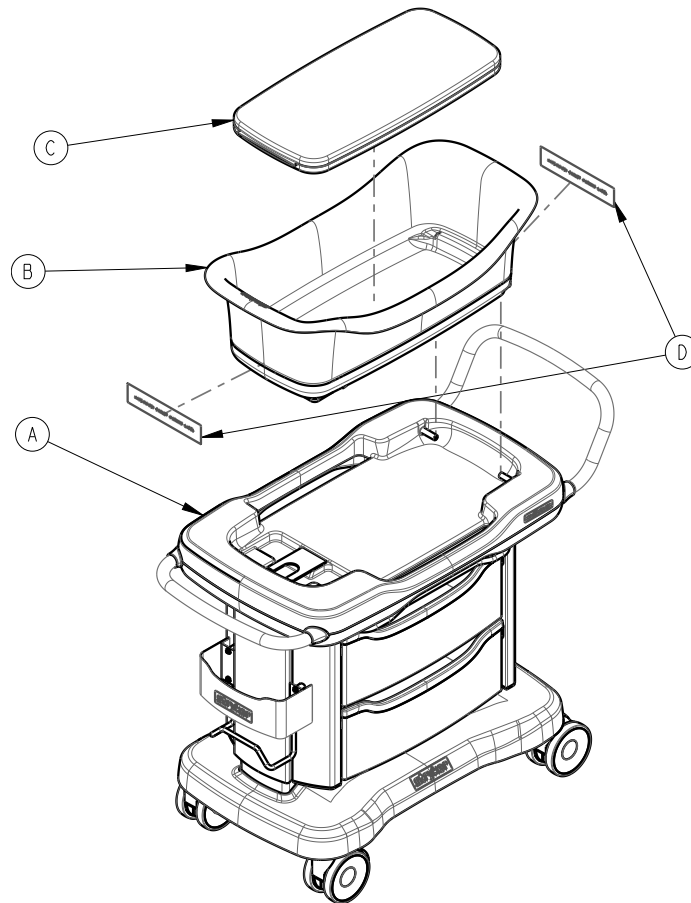
4. Repeat step 1 and step 2 on the opposite end of the product.
5. Remove the jack.
6. With the help of a second person, grasp both pull handles and raise the entire column assembly off of the base assembly.

**Note** - Use one foot to firmly step on top of the base cover while you pull up on the assembly.

7. Set assembly securely out of the way.
8. Remove and discard the base cover (U).
9. Reverse to install.
10. Verify proper operation before you return the product to service.

# Top level assembly - 4402-100-001

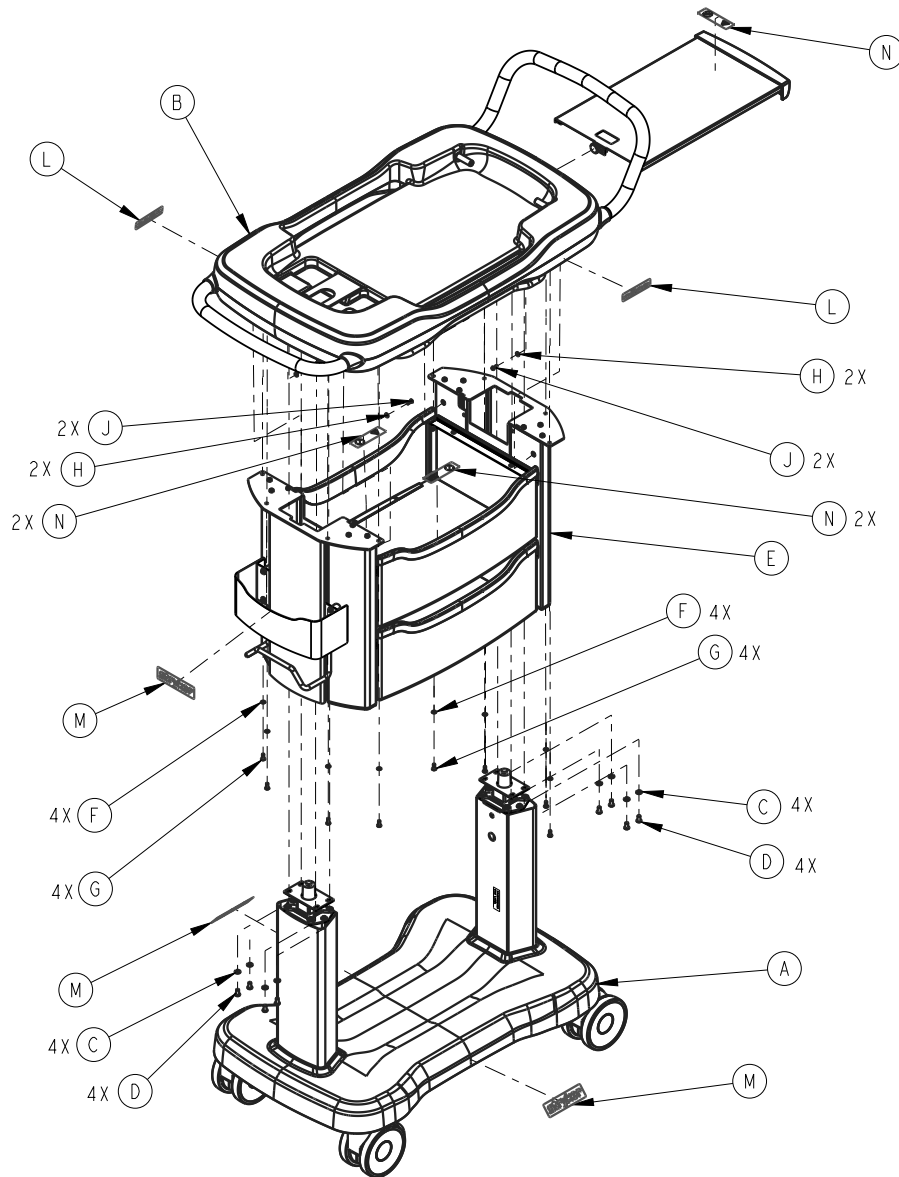
Rev C (Reference only)

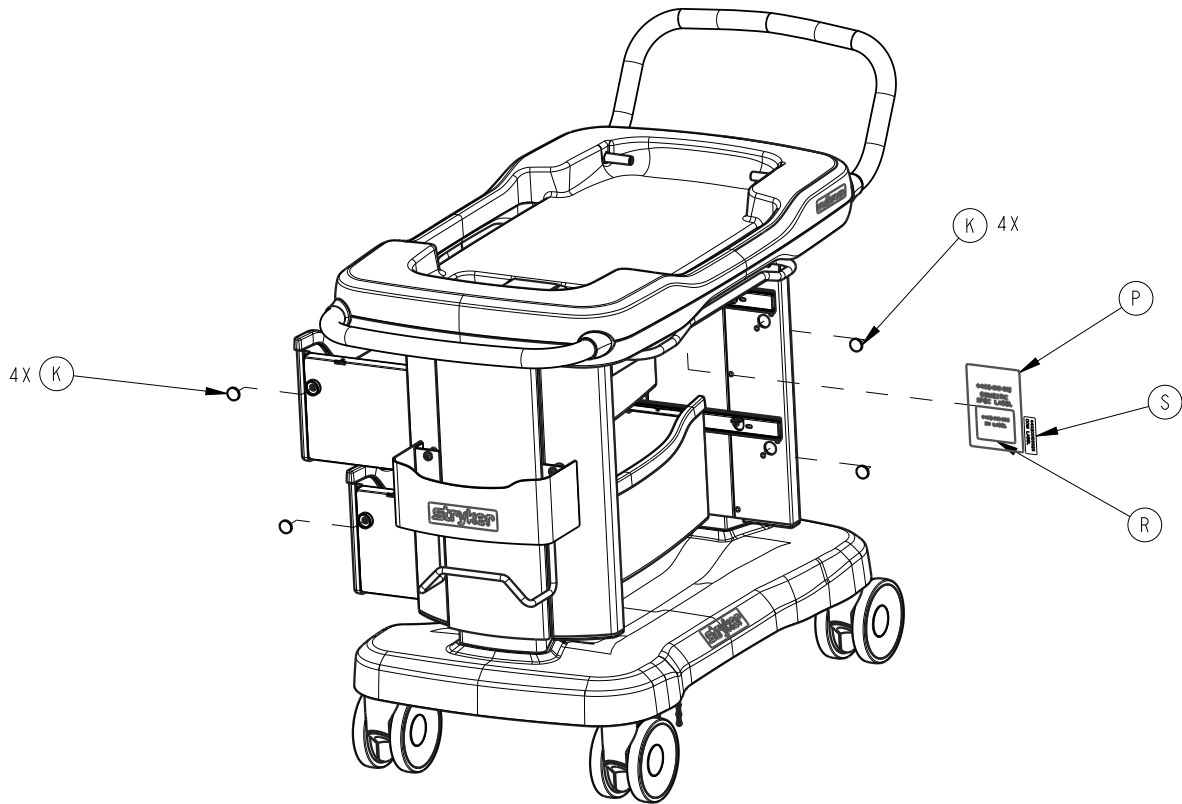


Item	Number	Name	Quantity
A	4402-010-001	Bassinet assembly - 4402-010-001 (page 21)	1
B	4402-010-003	Basket assembly	1
C	4402-031-001	Mattress assembly	1
D	4402-010-921	Warning label, USA only	1

# Bassinet assembly - 4402-010-001

Rev AB (Reference only)



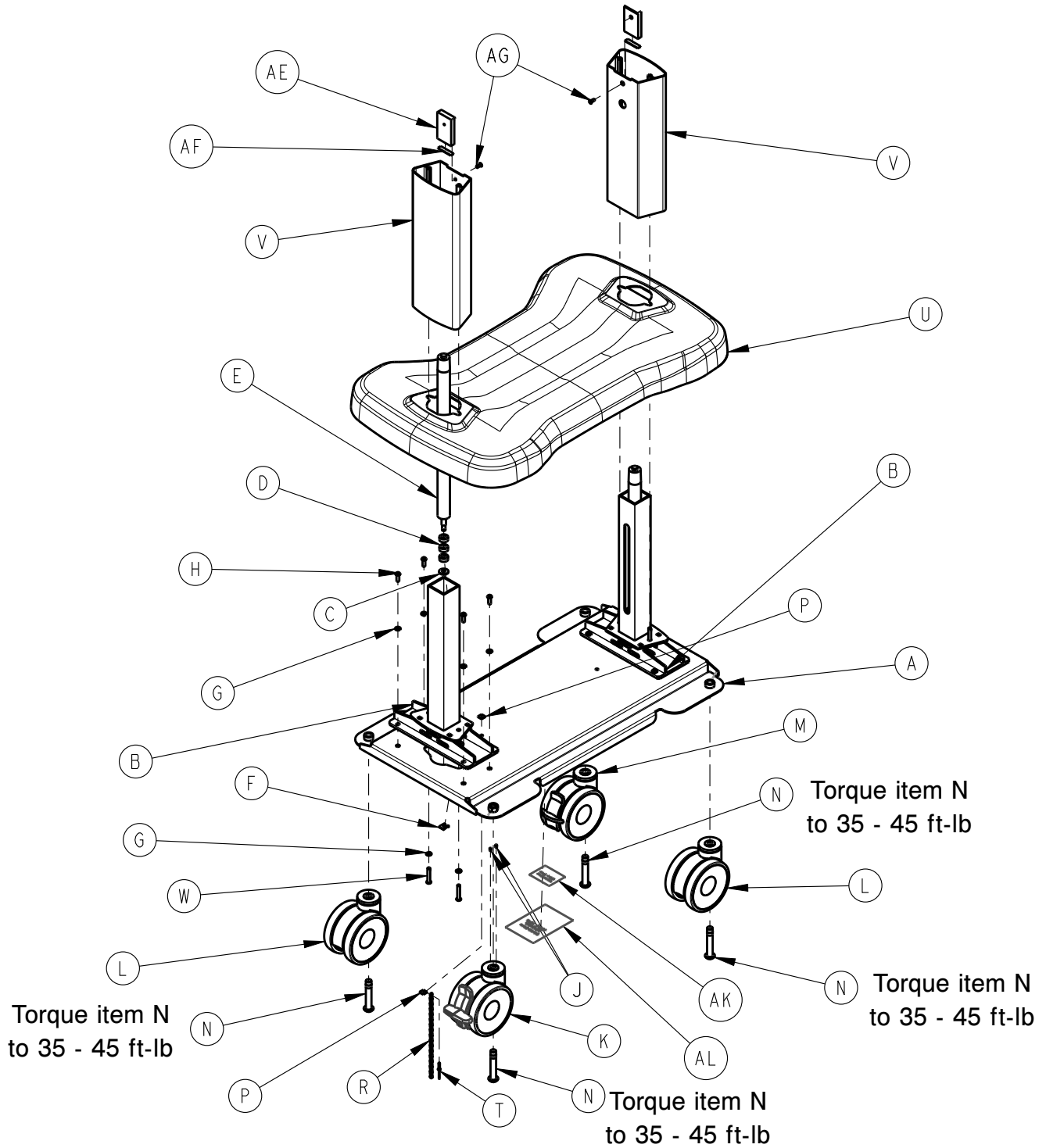


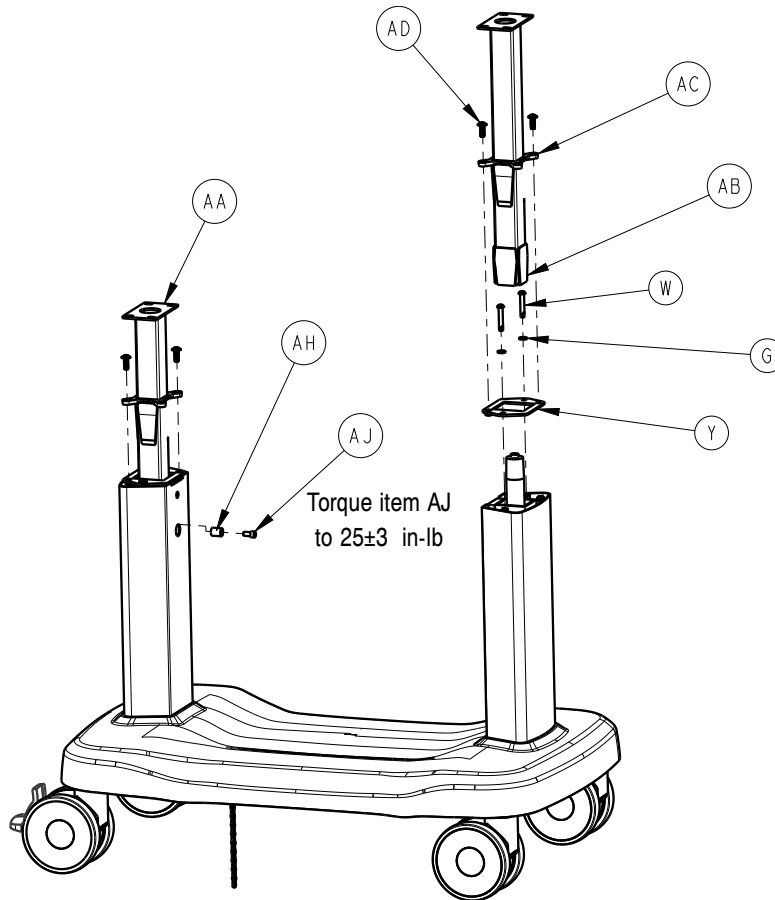
Item	Number	Name	Quantity
A	4402-001-001	Base assembly - 4402-001-001 (page 23)	1
B	4402-010-002	Cradle assembly - 4402-010-002 (page 35)	1
C	0012-131-000	Lock washer	8
D	0002-121-000	Button head cap screw	8
E	4402-050-001	Cabinet-drawer assembly - 4402-050-001 (page 32)	1
F	0013-055-000	Internal tooth lock washer	8
G	0004-913-000	Button head cap screw	8
H	0011-641-000	Washer	4
J	0002-123-000	Button head cap screw	4
K	4402-050-118	Magnet	8
L	4402-010-917	Nära logo label	2
M	4402-010-918	Stryker logo label	3
N	4402-010-914	Load / no baby label	5
P	4402-010-912	Domestic specification label	1
R	4402-010-906	Domestic serial number label	2
S	440200100928	Date of manufacture label	1



# Base assembly - 4402-001-001

Rev AA (Reference only)





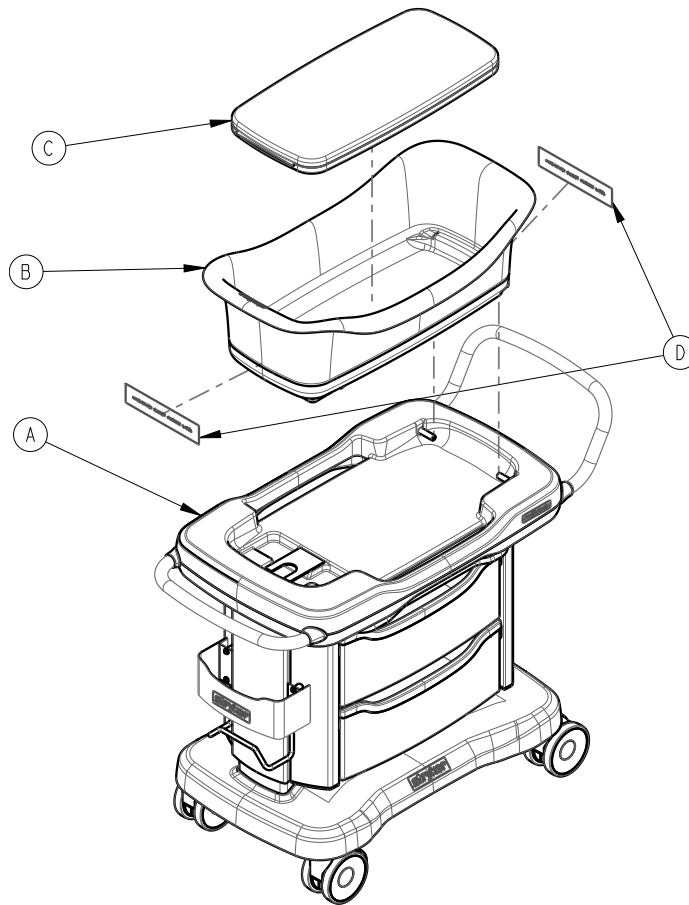
**Note** - Add loctite blue threadlocker to a minimum of 3 threads on item AJ.

Item	Number	Name	Quantity
A	4402-001-101	Base	1
B	4402-001-003	Lower guide tube assembly	2
C	4402-002-107	Washer	2
D	4402-002-108	Gas cylinder bumper	6
E	4402-002-111	Gas spring	2
F	4402-002-109	Cylinder gas clip	2
G	0012-131-000	Lock washer	16
H	0002-118-000	Button head cap screw	8
J	0026-679-000	Dowel pin	2
K	4402-001-106	5" swivel, brake, directional caster	1
L	4402-001-104	5" swivel caster	2
M	4402-001-107	5" swivel, brake caster	1
N	0002-119-000	Button head cap screw	4
P	0011-639-000	Washer	2
R	3001-200-052	Grounding chain	1
T	0025-653-000	Domed blind rivet	1

Item	Number	Name	Quantity
U	4402-001-002	Base cover assembly	1
V	4402-001-111	Finished inner extrusion	1
W	0002-125-000	Button head cap screw	2
Y	4402-001-126	Extrusion bushing mount plate	8
AA	4402-001-004	Upper guide tube assembly	2
AB	3150-002-405	Lower bushing	2
AC	3150-002-410	Upper bushing	2
AD	0002-117-000	Button head cap screw	2
AE	4402-001-132	Lift stop	4
AF	4402-001-134	Rubber bumper	2
AG	0001-214-000	Flat head machine screw	2
AH	4402-001-133	Spacer	2
AJ	0004-901-000	Socket head cap screw	2
AK	4402-010-906	Domestic serial number label	1
AL	4402-010-912	Domestic specification label	1

# International top level assembly - 4402-100-002

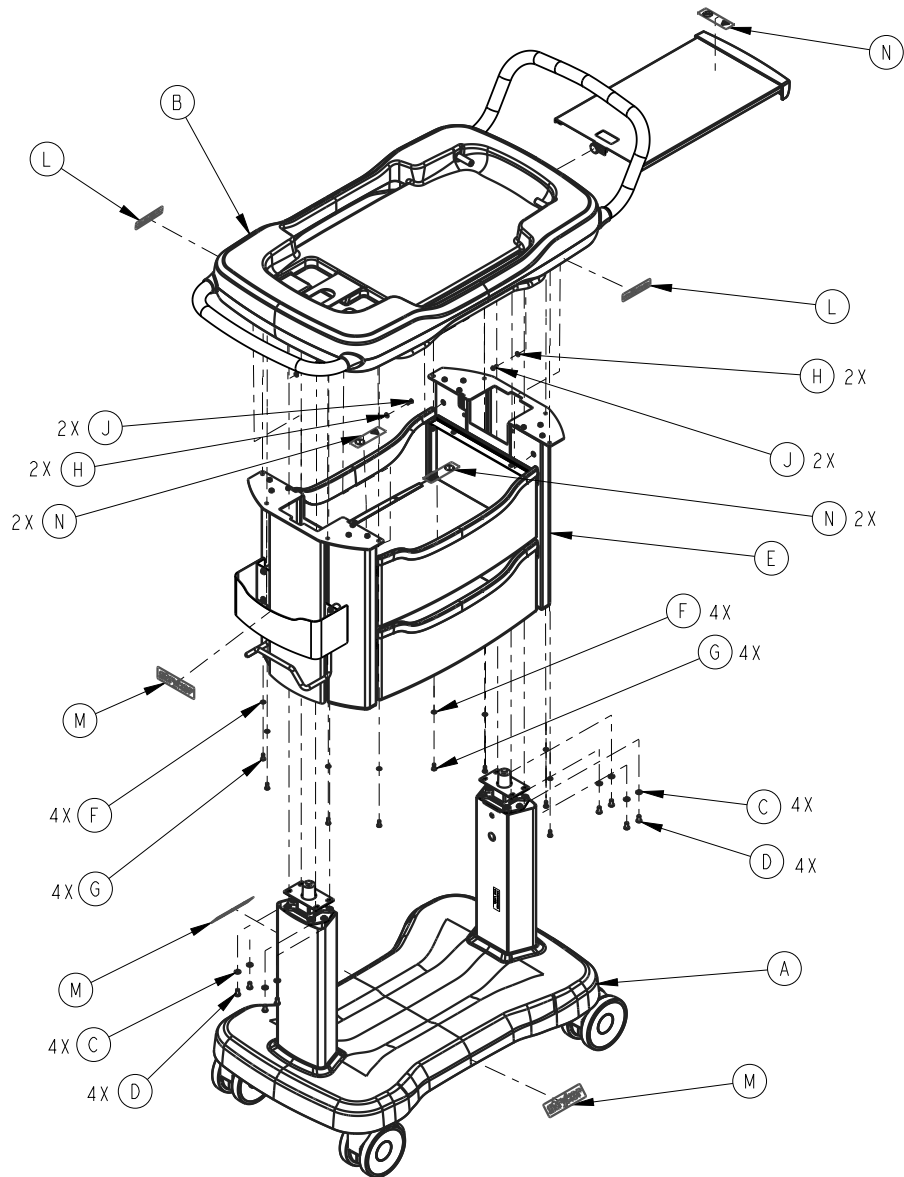
Rev AA (Reference only)

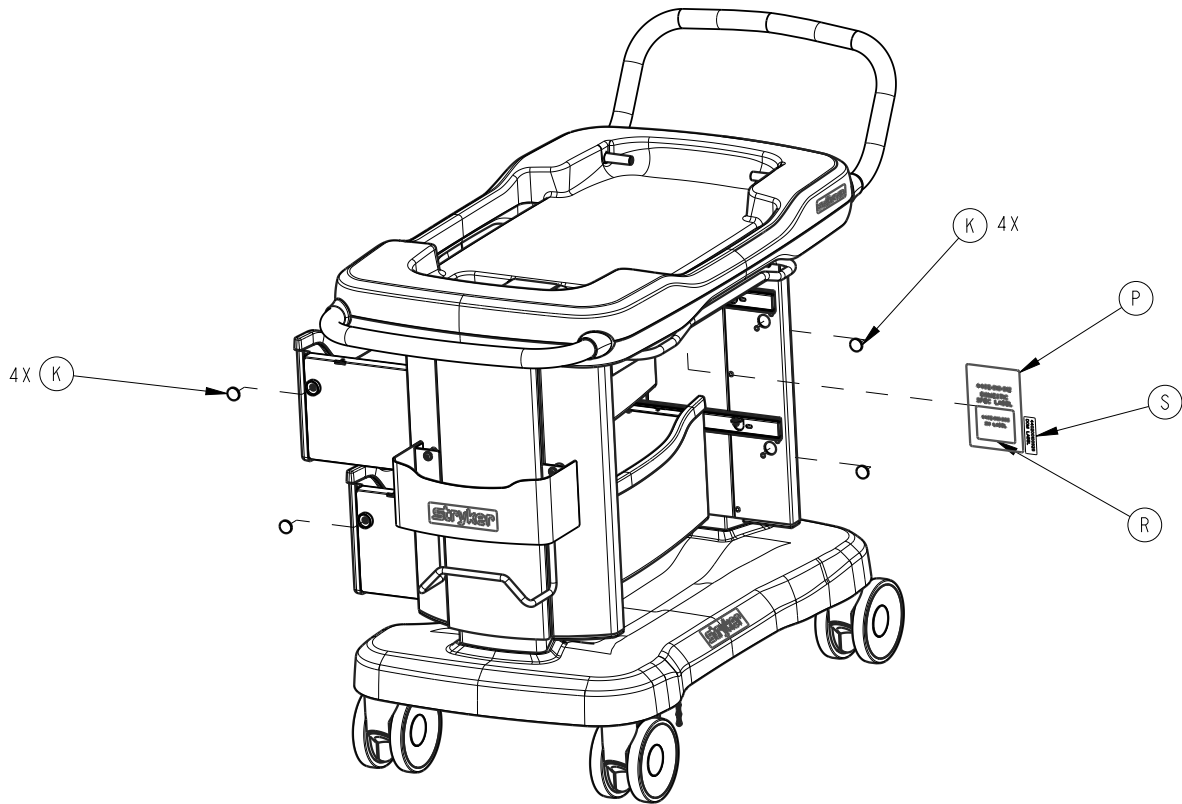


Item	Number	Name	Quantity
A	4402-010-009	International bassinet assembly - 4402-010-009 (page 27)	1
B	4402-010-003	Basket assembly	1
C	4402-031-004	Mattress assembly	1

# International bassinet assembly - 4402-010-009

Rev AB (Reference only)

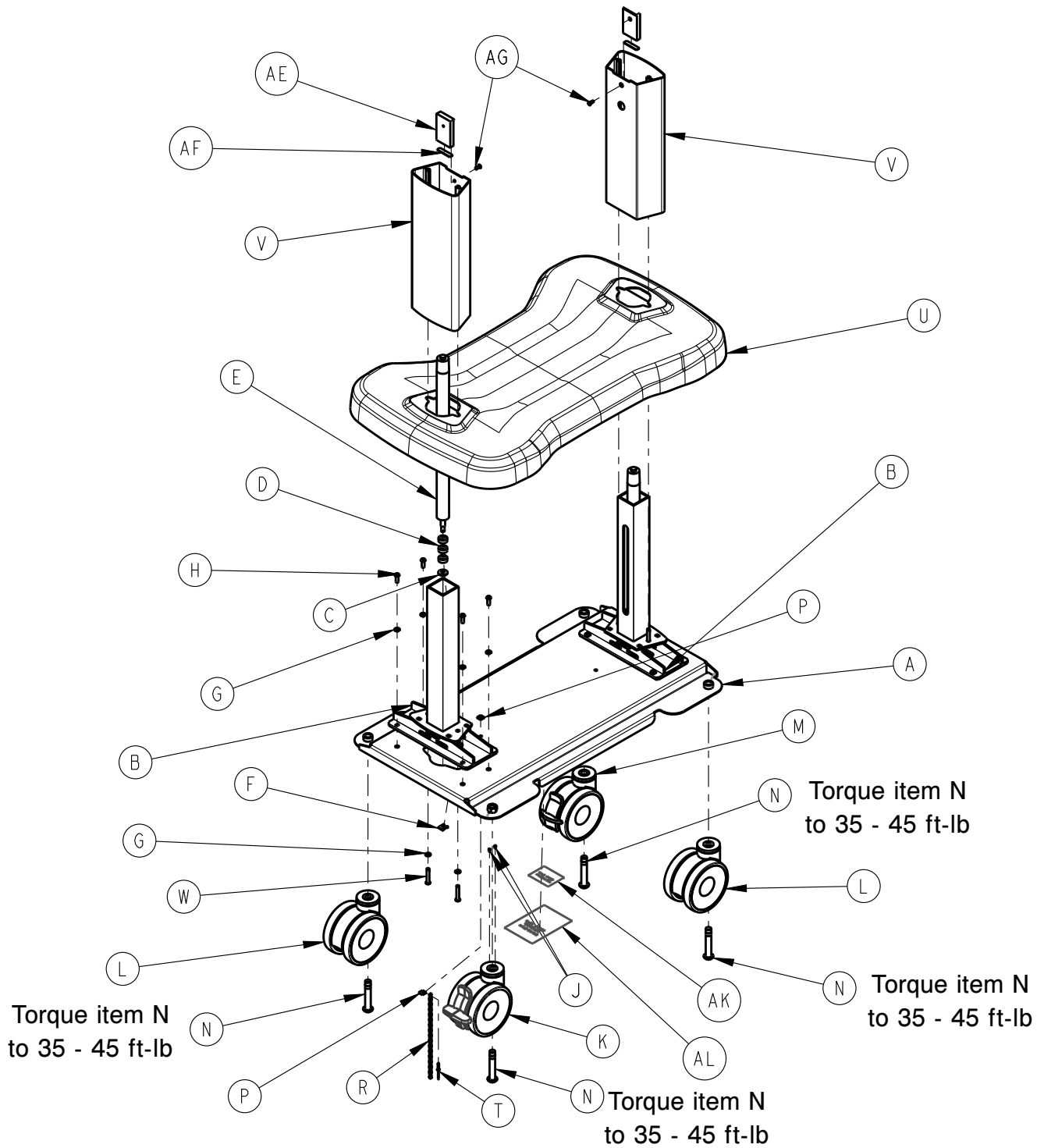


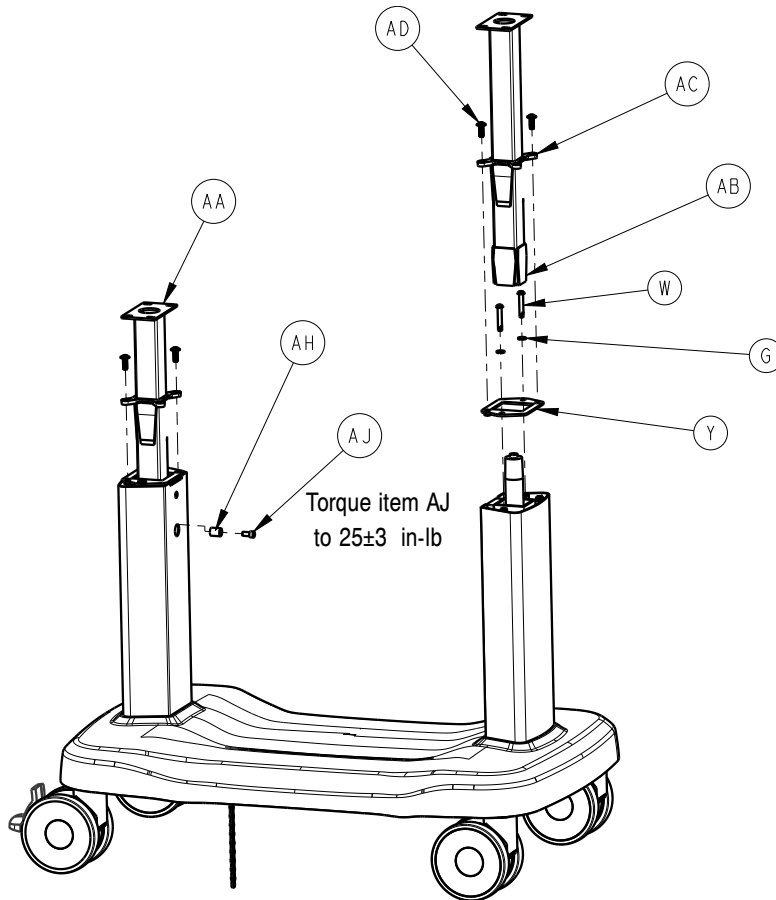


Item	Number	Name	Quantity
A	4402-001-007	International base assembly - 4402-001-007 (page 29)	1
B	4402-010-002	Cradle assembly - 4402-010-002 (page 35)	1
C	0012-131-000	Lock washer	8
D	0002-121-000	Button head cap screw	8
E	4402-050-001	Cabinet-drawer assembly - 4402-050-001 (page 32)	1
F	0013-055-000	Internal tooth lock washer	8
G	0004-913-000	Button head cap screw	8
H	0011-641-000	Washer	4
J	0002-123-000	Button head cap screw	4
K	4402-050-118	Magnet	8
L	4402-010-917	Nära logo label	2
M	4402-010-918	Stryker logo label	3
N	4402-010-914	Load/no baby label	5
P	4402-010-919	International specification label	1
R	4402-010-922	International serial number label	2
S	440200100928	Date of manufacture label	1

# International base assembly - 4402-001-007

Rev AB (Reference only)





**Note** - Add loctite blue threadlocker to a minimum of 3 threads on item AJ.

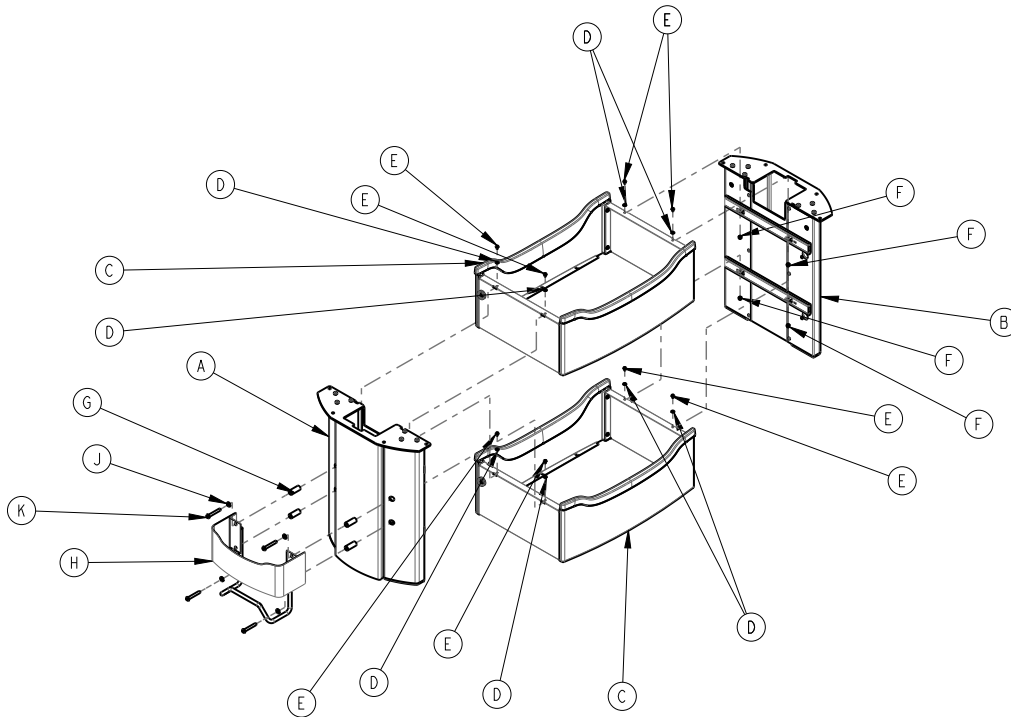
Item	Number	Name	Quantity
A	4402-001-101	Base	1
B	4402-001-003	Lower guide tube assembly	2
C	4402-002-107	Washer	2
D	4402-002-108	Gas cylinder bumper	6
E	4402-002-111	Gas spring	2
F	4402-002-109	Cylinder gas clip	2
G	0012-131-000	Lock washer	16
H	0002-118-000	Button head cap screw	8
J	0026-679-000	Dowel pin	2
K	4402-001-106	5" swivel, brake, directional caster	1
L	4402-001-104	5" swivel caster	2
M	4402-001-107	5" swivel, brake caster	1
N	0002-119-000	Button head cap screw	4
P	0011-639-000	Washer	2
R	3001-200-052	Grounding chain	1
T	0025-653-000	Domed blind rivet	1



Item	Number	Name	Quantity
U	4402-001-002	Base cover assembly	1
V	4402-001-111	Finished inner extrusion	2
W	0002-125-000	Button head cap screw	2
Y	4402-001-126	Extrusion bushing mount plate	8
AA	4402-001-004	Upper guide tube assembly	2
AB	3150-002-405	Lower bushing	2
AC	3150-002-410	Upper bushing	2
AD	0002-117-000	Button head cap screw	2
AE	4402-001-132	Lift stop	4
AF	4402-001-134	Rubber bumper	2
AG	0001-214-000	Flat head machine screw	2
AH	4402-001-133	Spacer	2
AJ	0004-901-000	Socket head cap screw	2
AK	4402-010-919	International specification label	1
AL	4402-010-922	International serial number label	1

# Cabinet-drawer assembly - 4402-050-001

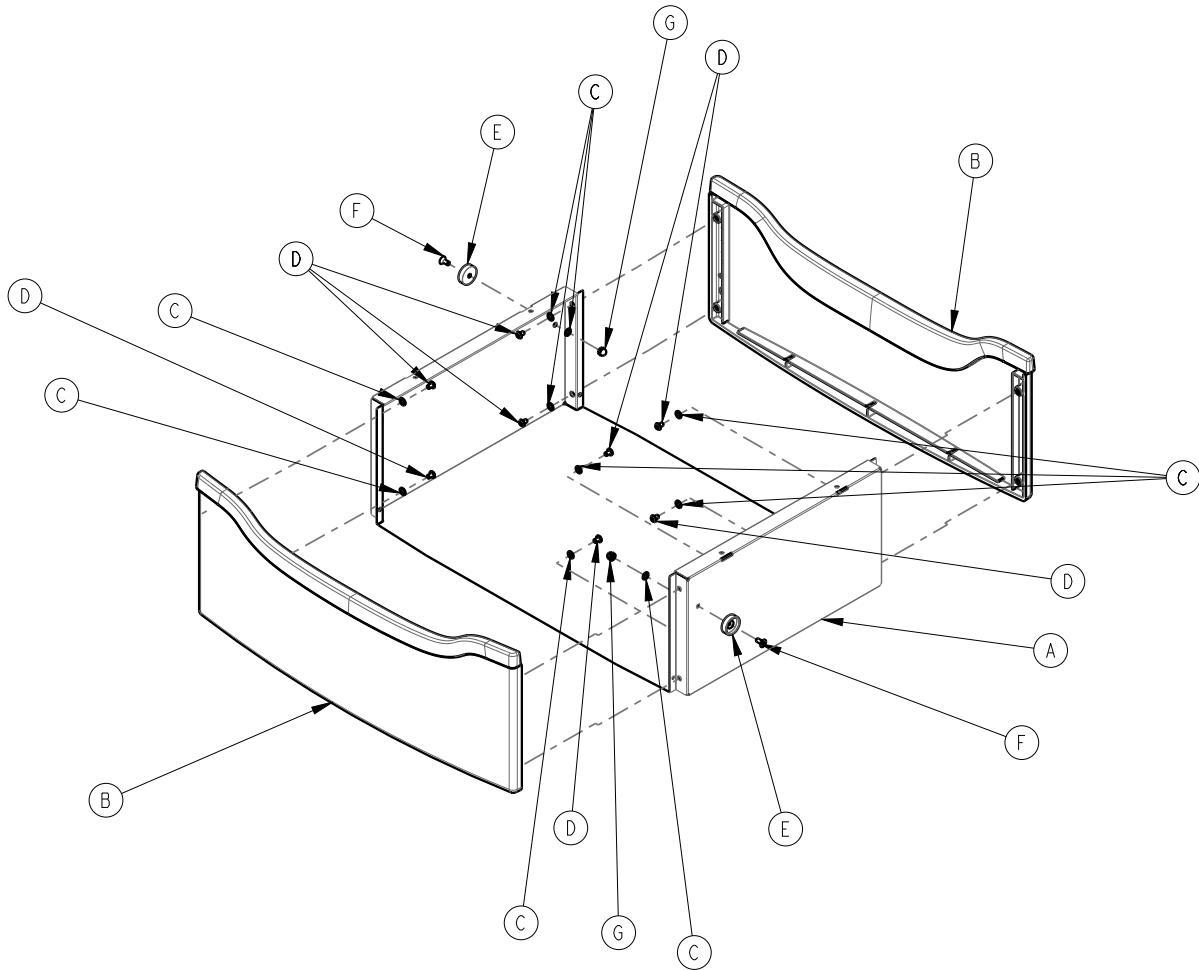
Rev C (Reference only)



Item	Number	Name	Quantity
A	4402-050-003	Document holder column assembly	1
B	4402-050-004	Column assembly	1
C	4402-050-002	<i>Drawer assembly - 4402-050-002</i> (page 33)	2
D	0013-054-000	Internal tooth lock washer	8
E	0004-299-000	Button head cap screw	8
F	0017-032-000	Acorn nut	8
G	4402-050-127	Document holder spacer	4
H	4402-050-007	<i>Document holder assembly - 4402-050-007</i> (page 34)	1
J	0012-131-000	Lock washer	4
K	0002-120-000	Button head cap screw	4

# Drawer assembly - 4402-050-002

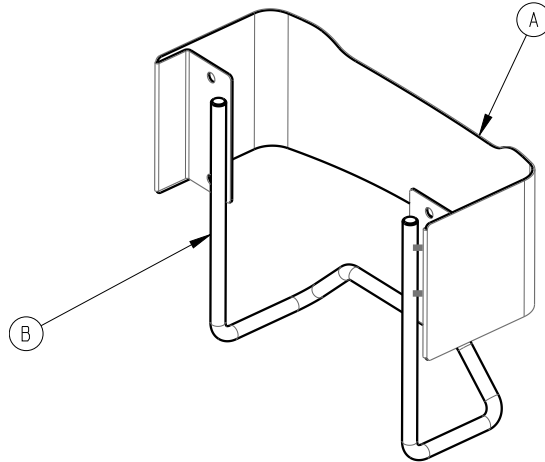
Rev A (Reference only)



Item	Number	Name	Quantity
A	4402-050-101	Drawer body	1
B	4402-050-005	Drawer face assembly	2
C	0013-054-000	Internal tooth lock washer	10
D	0004-299-000	Button head cap screw	8
E	4402-050-117	Magnet cup	2
F	0001-213-000	Flat head machine screw	2
G	0017-032-000	Acorn nut	2

# Document holder assembly - 4402-050-007

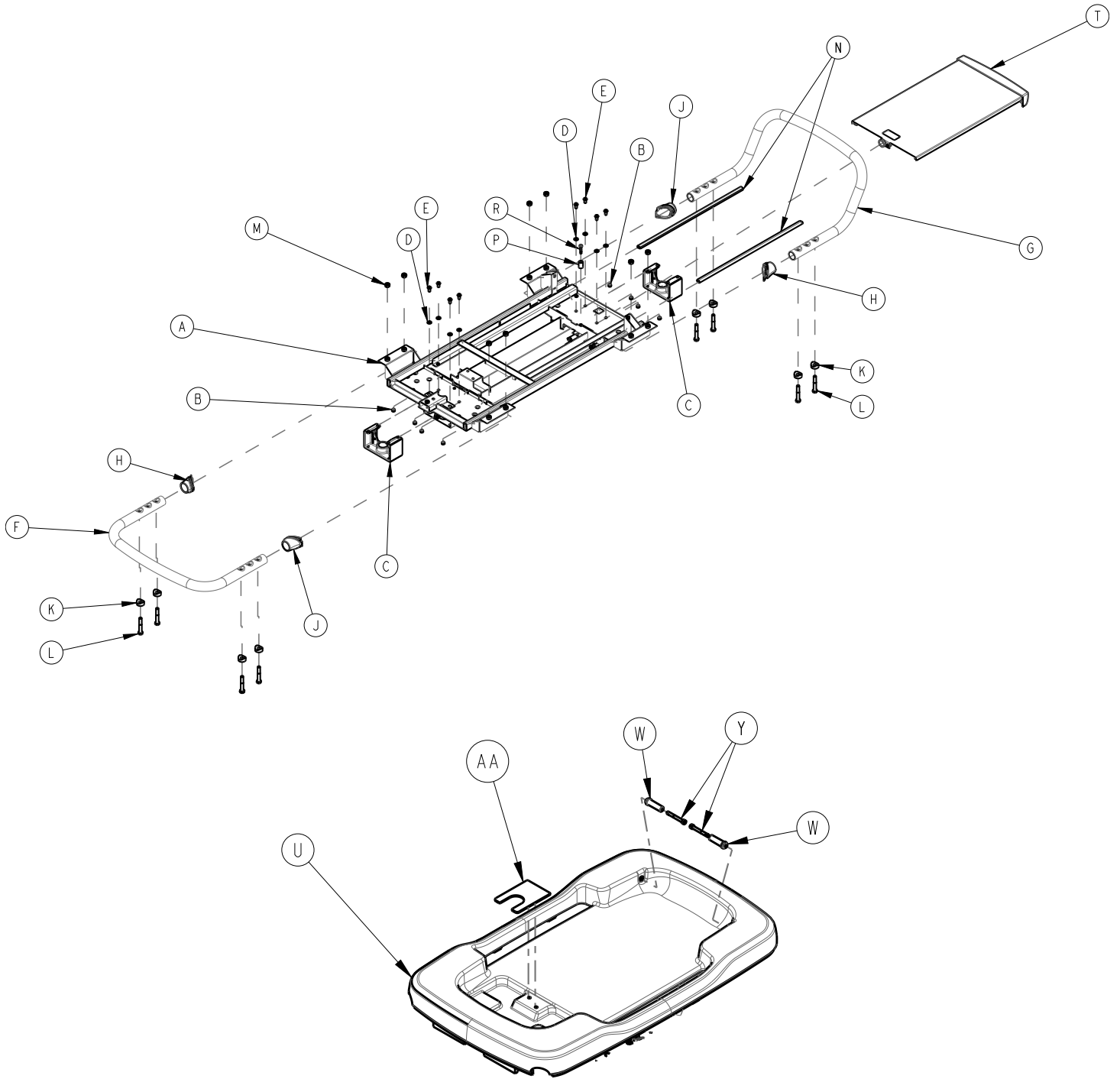
Rev E (Reference only)

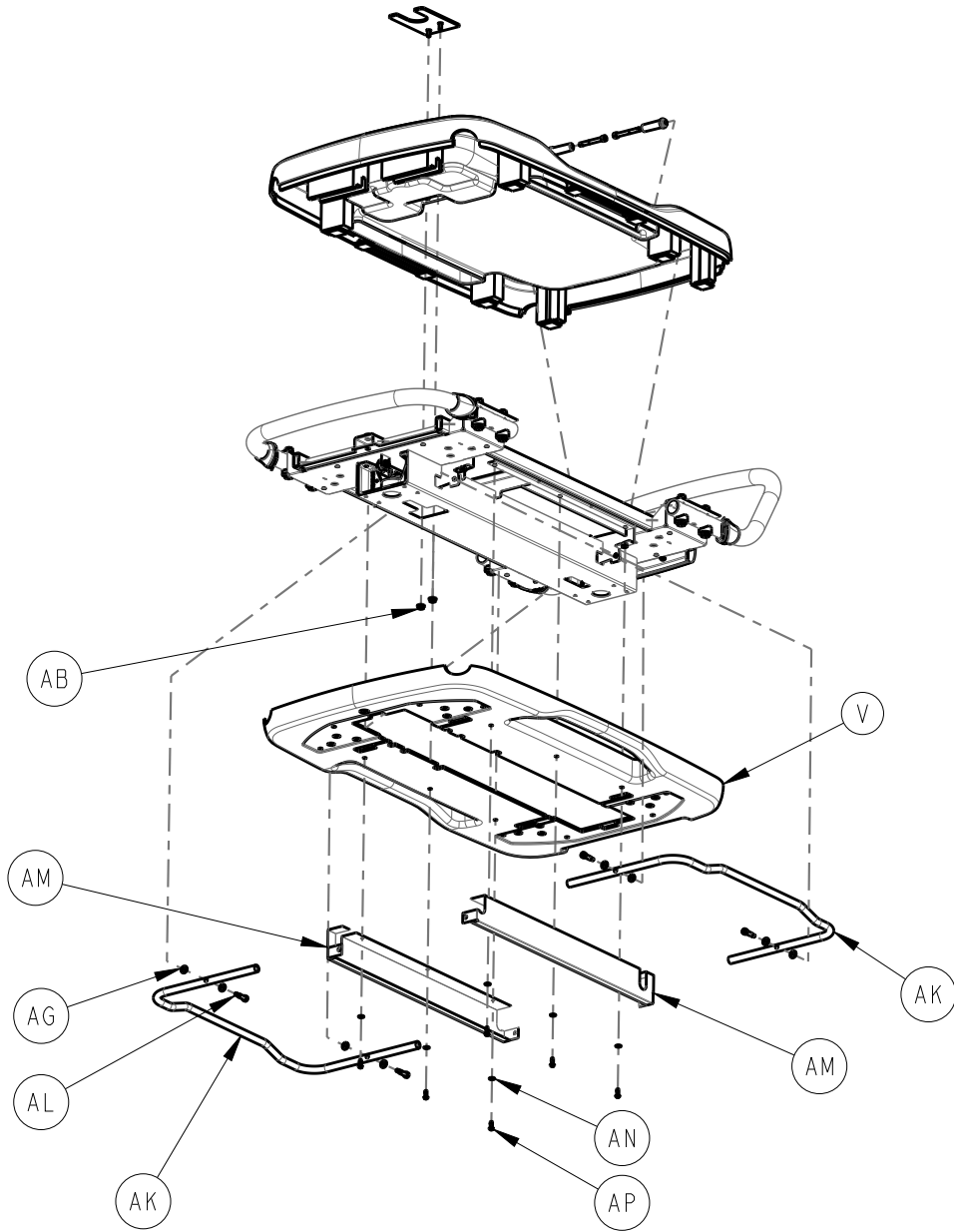


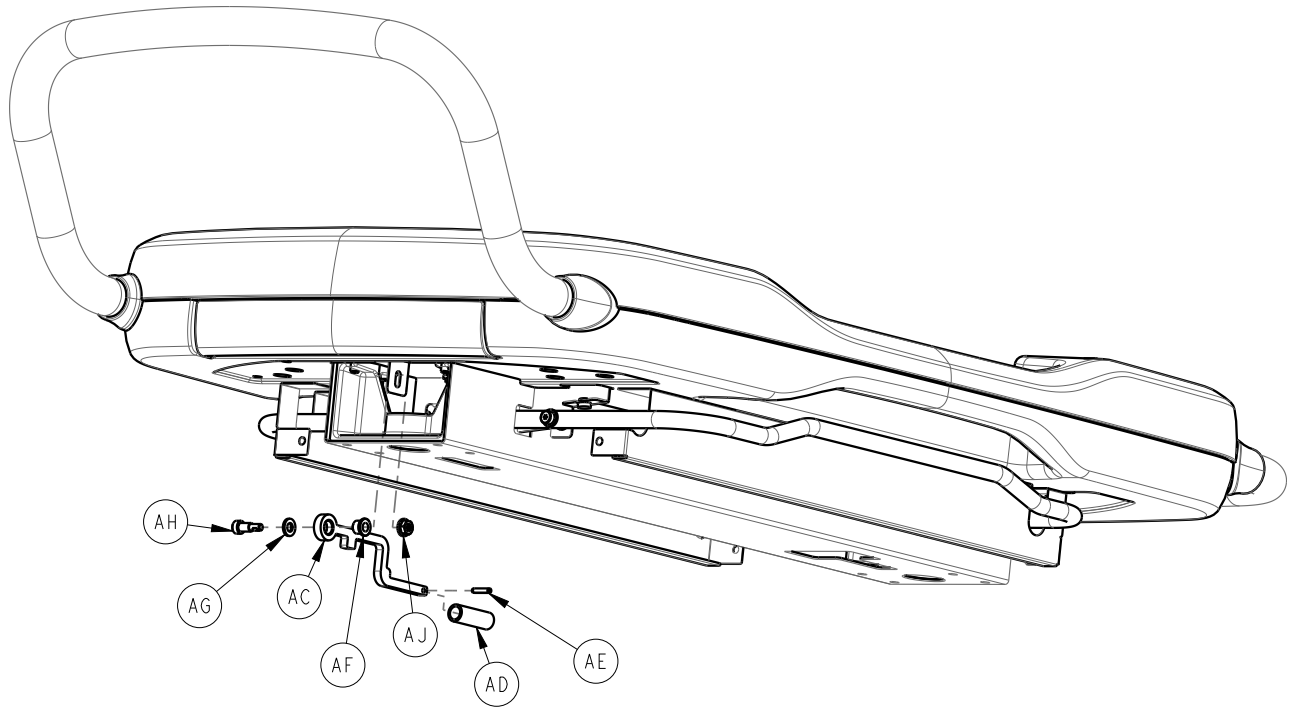
Item	Number	Name	Quantity
A	4402-050-124	Document holder body	1
B	4402-050-126	Document holder wire form	1

# Cradle assembly - 4402-010-002

Rev E (Reference only)







**Note** - Add loctite blue threadlocker to a minimum of three threads on item L.

Item	Number	Name	Quantity
A	4402-010-004	Cradle internal frame assembly	1
B	0056-042-000	Rubber bumper	8
C	4402-010-108	Machined gas cylinder top	2
D	0012-131-000	Lock washer	8
E	0002-121-000	Button head cap screw	8
F	4402-010-124	Bumper bar	1
G	4402-010-126	Push bar	1
H	4402-010-137	Grommet, bumper / push bar, left	2
J	4402-010-127	Grommet, bumper / push bar, right	2
K	4402-010-161	Saddle washer	8
L	0003-401-000	Hex head cap screw	8
M	0015-050-000	Nut	8
N	4402-010-122	Sliding tray extrusion	2
P	4402-010-131	Sliding tray stop spacer	1
R	0050-093-000	Pan head machine screw	1
T	4402-010-005	Sliding tray assembly	1
U	4402-010-006	Upper cradle assembly	1
V	4402-010-104	Lower cradle	1
W	4402-010-123	Tilt pin	2

Item	Number	Name	Quantity
Y	0004-904-000	Socket head cap screw	2
AA	4402-010-149	Support retainer	1
AB	0016-404-000	Serrated flange hex nut	2
AC	4402-010-141	Activation rod	2
AD	4402-010-143	Activation spacer	2
AE	0026-681-000	Roll pin	2
AF	4402-010-153	Flanged bronze bearing	2
AG	0011-640-000	Washer	10
AH	0008-093-000	Shoulder bolt	2
AJ	0016-403-000	Serrated flange hex nut	2
AK	4402-010-128	Lift bar	2
AL	0008-092-000	Shoulder bolt	4
AM	4402-010-129	Side valance	2
AN	0011-641-000	Washer	6
AP	0002-123-000	Button head cap screw	6





# stryker



Stryker Medical  
3800 E. Centre Avenue  
Portage, MI 49002  
USA