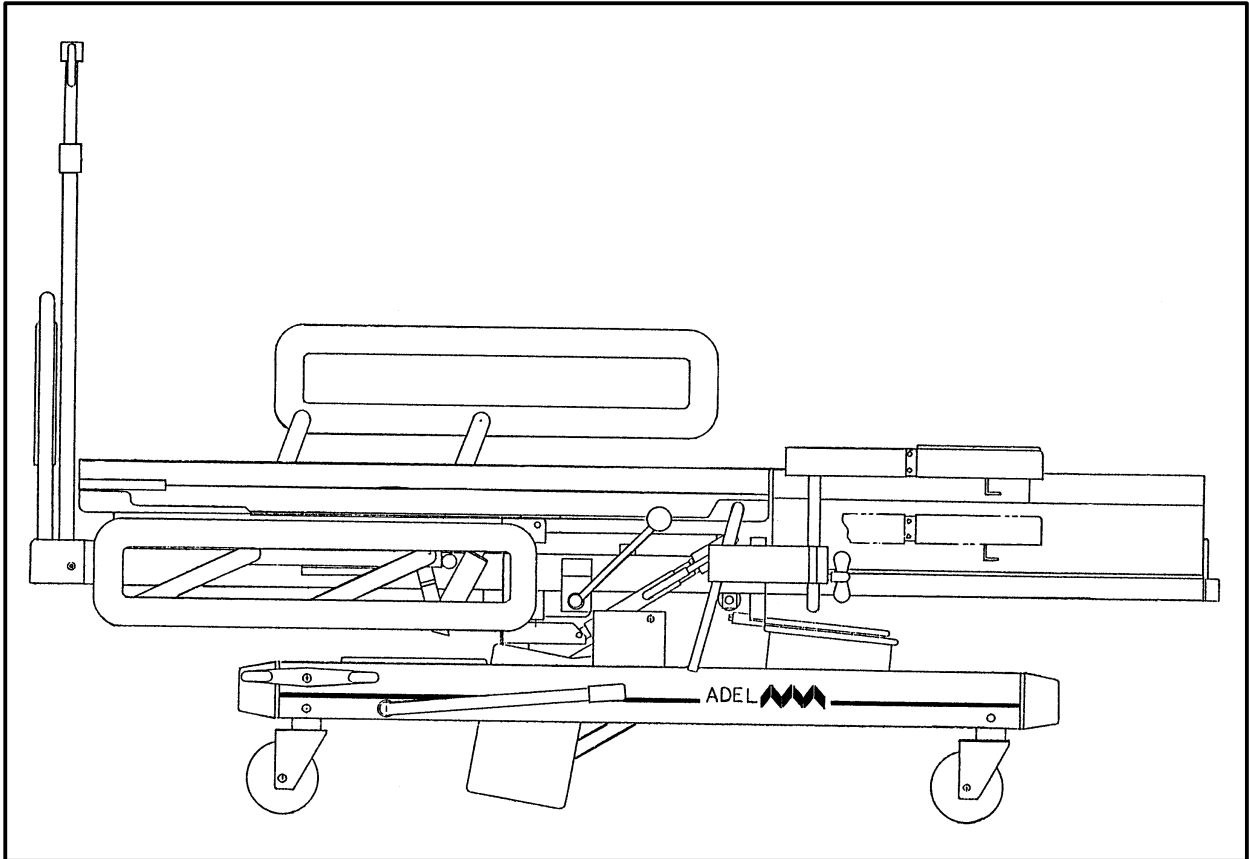


---

**IMPORTANT**  
File in your  
maintenance  
records

**stryker**<sup>®</sup>  
**Adel**



---

## **300 Childbearing Stretcher–Bed**

---

# **MAINTENANCE MANUAL**

**For Parts or Technical Assistance**  
**1–800–327–0770**

---

# Table of Contents

---

<b>Introduction</b>	
Specifications .....	2
Warning / Caution / Note Definition .....	2
<b>Unpacking And Initial Set-up Instructions</b> .....	3
<b>Preventative Maintenance</b> .....	4
<b>Troubleshooting Guide</b> .....	5
Schematic Diagrams	
Bed Pump .....	6
Head Panel Pump .....	6
Tilt Spring .....	6
<b>Service Information</b>	
Bed Pump Replacement .....	7
Head Pump Replacement .....	8
Counterbalance Replacement .....	8
Tilt Spring Replacement .....	9
<b>Field Replacement Parts</b> .....	10
<b>Cleaning</b>	
General Cleaning .....	11
Removal Of Iodine Compounds .....	11
<b>Assembly Drawings and Parts Lists</b>	
Bed Assembly .....	13
Frame/Brake Assembly .....	14, 15
Pedal Assembly, Left & Right .....	16
Pump Lever Assembly .....	17
Lift Assembly .....	18
Siderail Assembly, Left & Right .....	19
Foot Pan Assembly, Left & Right .....	20
Seat Panel Assembly .....	21
Head Panel Assembly .....	22
Foot Extension Assembly .....	23
Litter Assembly .....	24, 25
Head Pump Assembly, Left .....	26
Head Pump Handle, Left .....	27
Head Pump Handle, Right .....	27
Transfer Bar Assembly, Right .....	28
Basin Ring Assembly .....	29
Gas Spring Assembly .....	30
Tilt Handle Assembly .....	31
Hand Grip Assembly .....	32
Head Board Assembly .....	33
Counterbalance Spring Assembly .....	34
<b>Warranty</b>	
Obtaining Parts and Service .....	35
Supplemental Warranty Coverage .....	35
Return Authorization .....	36
Freight Damage Claims .....	36

# Introduction

---

## INTRODUCTION

This manual is designed to assist you with the maintenance of the Adel 300 Childbearing Stretcher–Bed. Read it thoroughly before using the equipment or beginning any maintenance on it.

## SPECIFICATIONS

Overall Length/Width	85"/35 1/2" (216 cm/90 cm)
Mattress Length/Width/Thickness	78"/30"/3 1/2" (Bed)/7" (Foot) (198 cm/76 cm/9 cm/18 cm)
Bed Height Range	24" to 37" (61 cm to 94 cm) (Hydraulic lift, foot operated)
Tilt/Trendelenberg/Head Panel Angle	Flat to 15° head down (Gas spring)/Flat to 74° head up/ seat tilt to 6° (Hydraulic lift)
Central Locking	2–wheel brake/1–wheel brake/steer
Patient Weight Capacity	300 pounds (135 kilograms)

Dimensions and specifications are subject to change.

## WARNING / CAUTION / NOTE DEFINITION

The words WARNING, CAUTION and NOTE carry special meanings and should be carefully reviewed.

---

### WARNING

The personal safety of the patient or user may be involved. Disregarding this information could result in injury to the patient or user.

---

---

### CAUTION

These instructions point out special procedures or precautions that must be followed to avoid damaging the equipment.

---

### NOTE

This provides special information to make maintenance easier or important instructions clearer.

# Unpacking and Initial Set-Up Instructions

---

## UNPACKING INSTRUCTIONS

1. Visually inspect crate for shipping damage. Report damage to delivery carrier. They are responsible for damage incurred during transit.
2. Remove the top and sides of the crate using standard tools and techniques.
3. Inspect for hidden freight/transit damage and report to carrier.
4. Remove all retainer banding, tape and protective material, set aside all loose components and separate boxed items.
5. Remove the 2" x 2" front pallet cleat.
6. The bed can now be raised "wheelbarrow" style from the headboard end and wheeled off the pallet.

## OPERATIONAL CHECK

1. Check operation of BED UP/DOWN lever. Leave in half up position.
2. Pull foot extension to FULL OUT position.
3. Check operation of HEAD UP/DOWN lever.
4. Check operation of tilt mechanism: TILT DOWN and UP. (Push down on foot extension while releasing tilt lever to level bed.)
5. Push foot extension to FULL IN.

# Preventative Maintenance

## PREVENTATIVE MAINTENANCE PROGRAM

Observation of the following scheduled maintenance and inspection program will help assure continuous trouble-free operation of your 300 Childbearing Stretcher-Bed.

ACTIVITY	MONTHLY INTERVAL	TOOLS REQUIRED	SUPPLIES REQUIRED
Lubricate screw threads on leg support clamping knobs.	6	N/A	Lubricant
Inspect and adjust wheel brake shoes on central locking casters by removing side screw and rotating bearing ring. Replace screw with Loctite 242 after adjusting.	24	Phillips screwdriver	N/A
Inspect exposed metal surfaces and apply touch-up paint where required.	12	N/A	Touch-up paint*
Scratched wood components. Remove loose dust; spray a light coat of Varathane over the area. Apply a second coat in approximately six hours.	N/A	N/A	Satin Varathane #91
Remove stains from mattress covers.	Each occurrence		See page 11.
Lubricate bearing surfaces between steel bushings and arms of bed lift mechanism. (The steel bushings are mounted over eight 3/8" dia. socket screws.)	12**	N/A	Lubricant

### \*Touch-up paint

Tan Brown (spray) p/n 0064-06-00

Tan Brown (touch-up) p/n 0064-08-00

Camel (spray) p/n 0064-07-00

Camel (touch-up) p/n 0064-09-00

\*\* Lubrication is required each time a bed chassis is hot washed or cleaned with oil soluble cleaners. The lubricant should be applied only when the parts are dry.

# Troubleshooting Guide

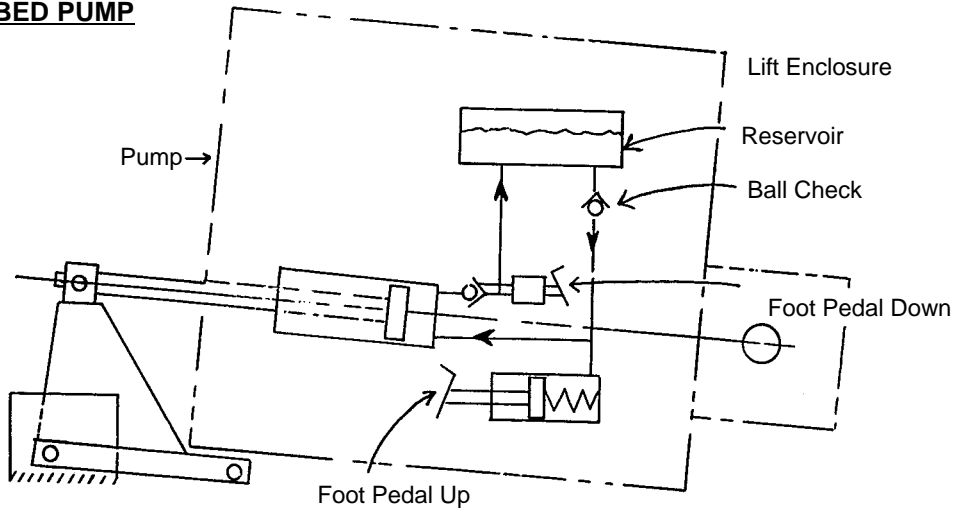
## TROUBLESHOOTING GUIDE

The following chart is intended to assist qualified service personnel with identifying and correcting problems associated with the hydraulic/pneumatic systems. The schematic diagrams on the following page should be used for reference. Whenever corrective action is being taken, remove the patient from the bed.

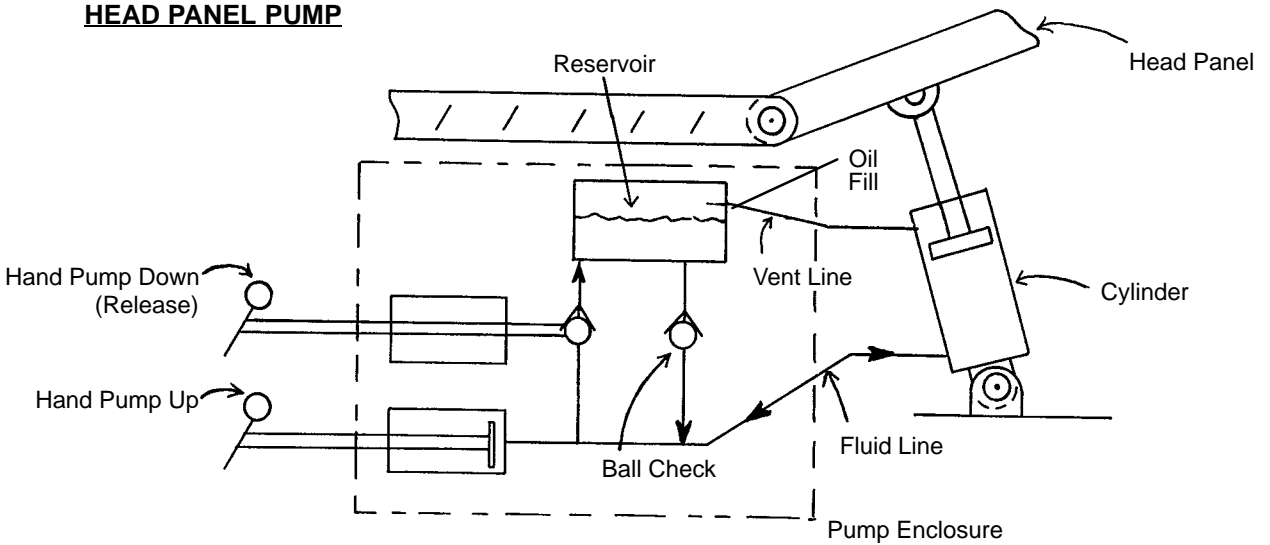
PROBLEM/SYMPTOM	POSSIBLE CAUSE	RECOMMENDED ACTION
Bed does not raise. Bed does not lower. Bed lowers by itself. Bed High/Low lever loose.	Ball checks staying open or reservoir ball jammed closed – line blockage. Return ball jammed closed – line blockage. Leaking piston seal. Broken drive pin (internal).	Replace pump cylinder assembly (page 7). Replace pump cylinder assembly (page 7). Replace pump cylinder assembly (page 7). Replace pin.
Head panel does not raise or hold. Head panel does not lower. Head panel lowers by itself. Head panel partially lowers after being lifted by hand.	Cross shaft binding. Low oil level. Ball checks staying open or reservoir ball jammed closed – line blockage. Return ball jammed closed – line blockage. Leaking cylinder seal. Binding in cross shaft. Low oil level. Air drawn into cylinder from oil reservoir.	Lube and realign shaft. Check oil reservoir level. Replace pump cylinder assembly (page 7). Replace pump cylinder assembly (page 7). Replace pump cylinder assembly (page 7). Disconnect cross shaft and test with left side handle only. Check oil reservoir level. Use release lever to lower, or continue pumping until desired position is achieved.
Bed does not tilt when lever is lifted and weight is applied to head end or foot end. Bed tilts back or forward without use of lever.	Out of adjustment. Out of adjustment. Broken valve (internal).	Loosen lock nut and turn gas spring (1 turn) into pivot block (clockwise). Loosen lock nut and turn gas spring (1 turn) out of pivot block (counter-clockwise). Replace tilt spring (page 9).

# Schematic Diagrams

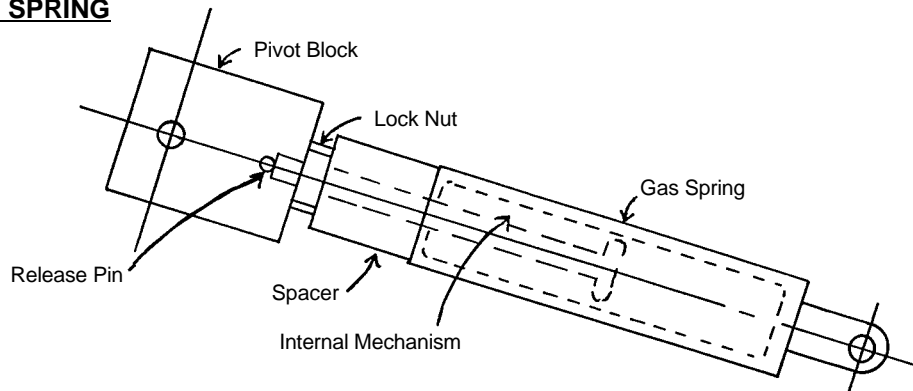
## BED PUMP



## HEAD PANEL PUMP



## TILT SPRING



## BED PUMP REPLACEMENT

BED PUMP KIT #88-0602-14-00

### Required Tools:

Pliers

Flat Screwdriver

7/16 Hex and Drive

Hammer and 3/16 Punch

### Replacement Procedure:

1. Remove foot end mattress, foot pans and headboard.
2. Slide foot extension panel IN and lower siderails. Position bed with head end casters 3' 10" from the wall. Lock the brakes.
3. Lift the foot end of the bed to a vertical position and lean the bed against the wall. Collapse the bed to the LOW position by lifting the pump lever UP and pushing the frame in.
4. Remove the retaining ring from the pin at the top end of the pump shaft and pull pin out.
5. Remove drive pins (drive out from bottom side only) in foot pedal shafts at pump.
6. Remove the four lock nuts from the pump mount.
7. Lift off the two top clamp pieces.
8. Remove the defective pump.
9. Install the replacement pump into the lower bracket cradle and U-bolts, noting that the larger section of the pump base should be facing the top of the bed.
10. Replace the two top clamp pieces, fitting the edge between the lower clamp and the pump housing.
11. Replace the four lock nuts, tightening only until all clamp faces touch the pump mount trunnion. PUMP MUST ROTATE FREELY.
12. Install foot levers using nuts and bolts provided.
13. Pump with lever until pump shaft reaches lift crank. Install pin and retaining ring.
14. Replace foot mattress, headboard and foot pans.
15. Test bed before returning it to service: lift HI/LOW bed lever to lower bed\* and pump hi/lo bed lever to raise bed\*.

\* Bed motion that is not smooth may be caused by air bubbles in the piston area. Repeat the lowering and raising until bubbles are cleared and bed motion is smooth.



# Service Information

---

## HEAD PUMP REPLACEMENT

HEAD PUMP AND CYLINDER KIT #88-0604-03-00

### Required Tools:

Flat Screwdriver	7/32 Allen Wrench
Hammer and Small Drift Punch	9/16 End Wrench

### Replacement Procedure:

1. The head panel should be in the FLAT (horizontal) position.

---

### CAUTION

If pump fails when the head panel is in the up position and the head panel cannot be lowered, be prepared to catch the cylinder oil when breaking the hydraulic line in step 3.

2. Use hammer and punch to remove handle transfer bar – pump pin.
3. Break vent line at top of cylinder by removing the clamp.
4. Remove the two button head socket screws from the pump.
5. Remove the two retaining rings and two pins from the hydraulic cylinder. Remove the defective pump.
6. Position the replacement pump and install the two button head screws.
7. Feed cylinder and hydraulic line over lift mechanism and install hydraulic cylinder\*. Disconnect vent line.
8. Attach vent line to replacement cylinder and replace clamp.
9. Install transfer bar on pump using the pin removed in step 2. Install the cylinder with the pins and retaining rings.
10. Test bed before returning it to service: activate head adjustment handle to raise and lower head panel. Sit on the bed and press back on the head panel. Check for fluid leakage at fitting. If "drift" or "fade" is noticed, refer to Troubleshooting section (page 5).

\* If hydraulic oil is needed, use ISO VG Grade 32.

## COUNTERBALANCE REPLACEMENT

COUNTERBALANCE SPRING KIT #88-0604-05-00

---

### WARNING

Do not remove the counterbalance spring. Contents under load. Instructions and special tool for servicing are provided with the replacement unit

---

## TILT SPRING REPLACEMENT

TILT SPRING KIT #88-0603-15-00

### Required Tools:

Flat Screwdriver  
Hammer and Punch

Crescent Wrench

### Replacement Procedure:

1. Loosen lock nut on spring housing.
2. Remove retaining rings and pivot pins from *both* tilt springs.
3. Tilt bed back, freeing both springs. Unscrew the defective spring.
4. Remove lock nut and spacer from defective spring and add to replacement spring.
5. Screw spring into upper pivot block, approximately 1/4 inch.
6. Tilt bed back flat to install pivot pins and retaining rings. Tighten lock nut.
7. Test bed before returning it to service: sit on the head panel – the bed should stay flat. Tilt bed and add weight to foot extension. Bed should stay tilted (up to 150 pounds of weight).
8. Adjustment of spring to "release" or "lock" can be made by repeating steps 1–3, 5 and 6. Turn the spring farther *in* to improve the *release* function, or turn it *out* to improve the *locking* function.

# Field Replacement Parts

---

<b><u>PART NAME</u></b>	<b><u>PART NUMBER</u></b>
10 Liter Fluid Basin .....	88-0608-25-00
Basin Liners, Package of 250 .....	88-1332-00-00
Bed Pump Kit .....	88-0602-14-00
Counterbalance Spring Kit .....	88-0604-05-00
Head Pump and Cylinder Kit .....	88-0604-03-00
I.V. Pole .....	88-0589-67-00
Mattress, Foot Section Complete .....	88-0608-40-00
Mattress, Head Section Complete .....	88-0608-17-00
Tilt Spring Kit .....	88-0603-15-00

To order a replacement part or obtain factory assistance for service problems, contact Stryker Customer Service at 800-327-0770 (616-329-2100 in Michigan or outside the United States) or your Stryker representative.

Include the following information with your request:

1. Serial and model number of the bed.
2. Date purchased, if available.
3. Part number and description of the replacement part you need.
4. Shipping and billing instructions including complete address.

Please contact the customer service department for return authorization and shipping information prior to returning any parts for exchange or repair.

# Cleaning

## GENERAL CLEANING

In general, when used in those concentrations recommended by the manufacturer, either phenolic type or quaternary type disinfectants can be used with Staph–Chek fabrics. Iodophor type disinfectants are not recommended for use on Staph–Chek fabrics because staining may result. The following products have been tested by the Herculite Laboratory and have been found not to have a harmful effect on Staph–Chek fabrics WHEN USED IN ACCORDANCE WITH MANUFACTURERS RECOMMENDED DILUTION.\*

TRADE NAME	DISINFECTANT TYPE	MANUFACTURER	*MANUFACTURER'S RECOMMENDED DILUTION
A33	Quaternary	Airwick (Professional Products Division)	2 ounces/gallon
A33 (dry)	Quaternary	Airwick (Professional Products Division)	1/2 ounce/gallon
Beaucoup	Phenolic	Huntington Laboratories	1 ounce/gallon
Blue Chip	Quaternary	S.C. Johnson	2 ounces/gallon
Elimstaph	Quaternary	Walter G. Legge	1 ounce/gallon
Franklin Phenomysan F2500	Phenolic	Purex Corporation	1 1/4 ounce/gallon
Franklin Sentinel	Quaternary	Purex Corporation	2 ounces/gallon
Galahad	Phenolic	Puritan Churchill Chemical Company	1 ounce/gallon
Hi–Tor	Quaternary	Huntington Laboratories	1/2 ounce/gallon
LPH	Phenolic	Vestal Laboratories	1/2 ounce/gallon
Matar	Phenolic	Huntington Laboratories	1/2 ounce/gallon
Omega	Quaternary	Airwick (Professional Products Division)	1/2 ounce/gallon
Quanto	Quaternary	Huntington Laboratories	1 ounce/gallon
Sanikleen	Quaternary	West Chemical Products	2 ounces/ gallon
Sanimaster II	Quaternary	Service Master	1 ounce/gallon
Vesphene	Phenolic	Vestal Laboratories	1 1/4 ounce/ gallon

## REMOVAL OF IODINE COMPOUNDS

### NOTE

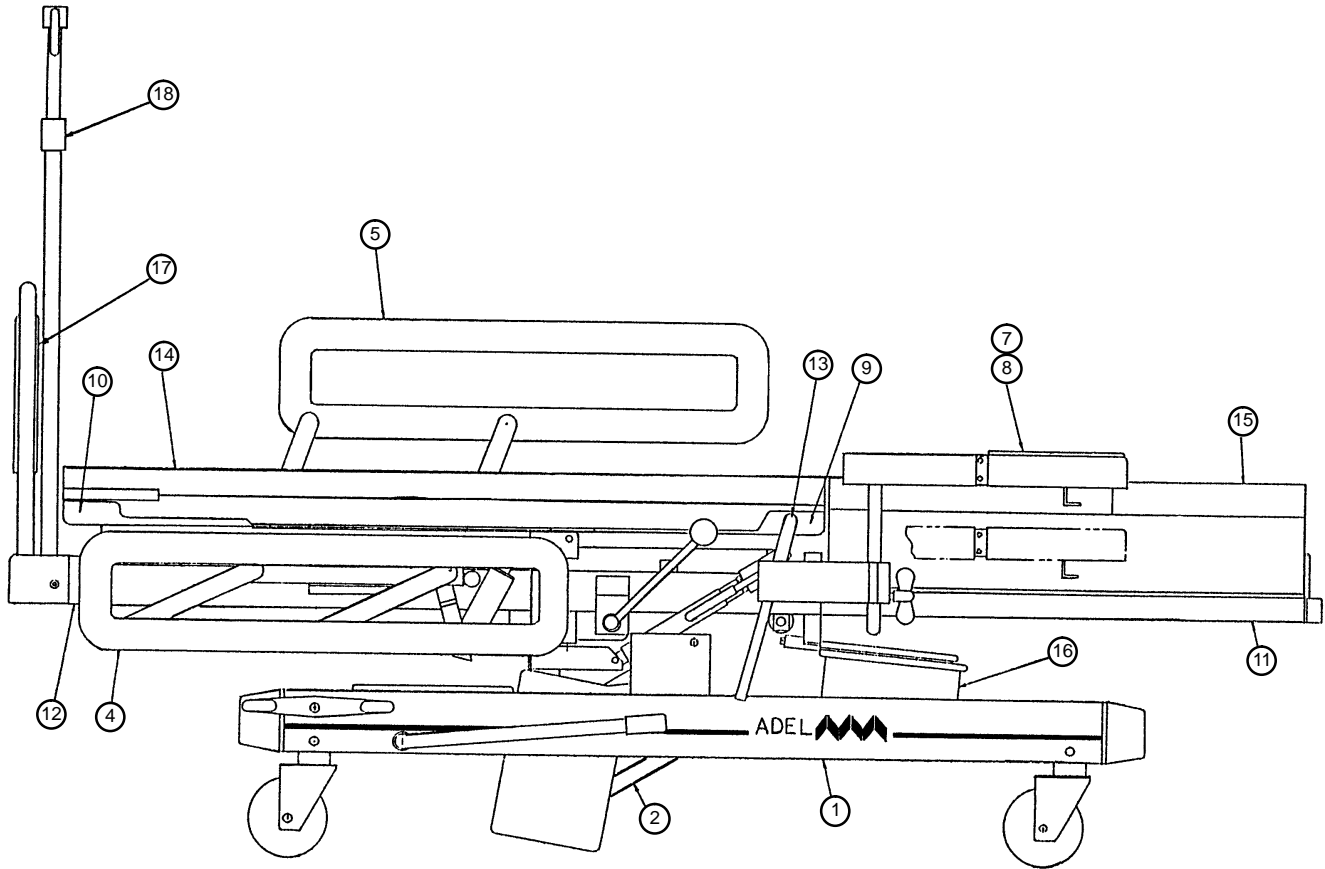
This solution may be used to remove iodine stains from mattress cover and foam footrest pad surfaces.

1. Use a solution of 1–2 tablespoons Sodium Thiosulfate in a pint of warm water to clean the stained area. Clean as soon as possible after staining occurs. If stains are not immediately removed, allow solution to soak or stand on the surface.
2. Rinse surfaces which have been exposed to the solution in clear water before returning bed to service.

# Notes

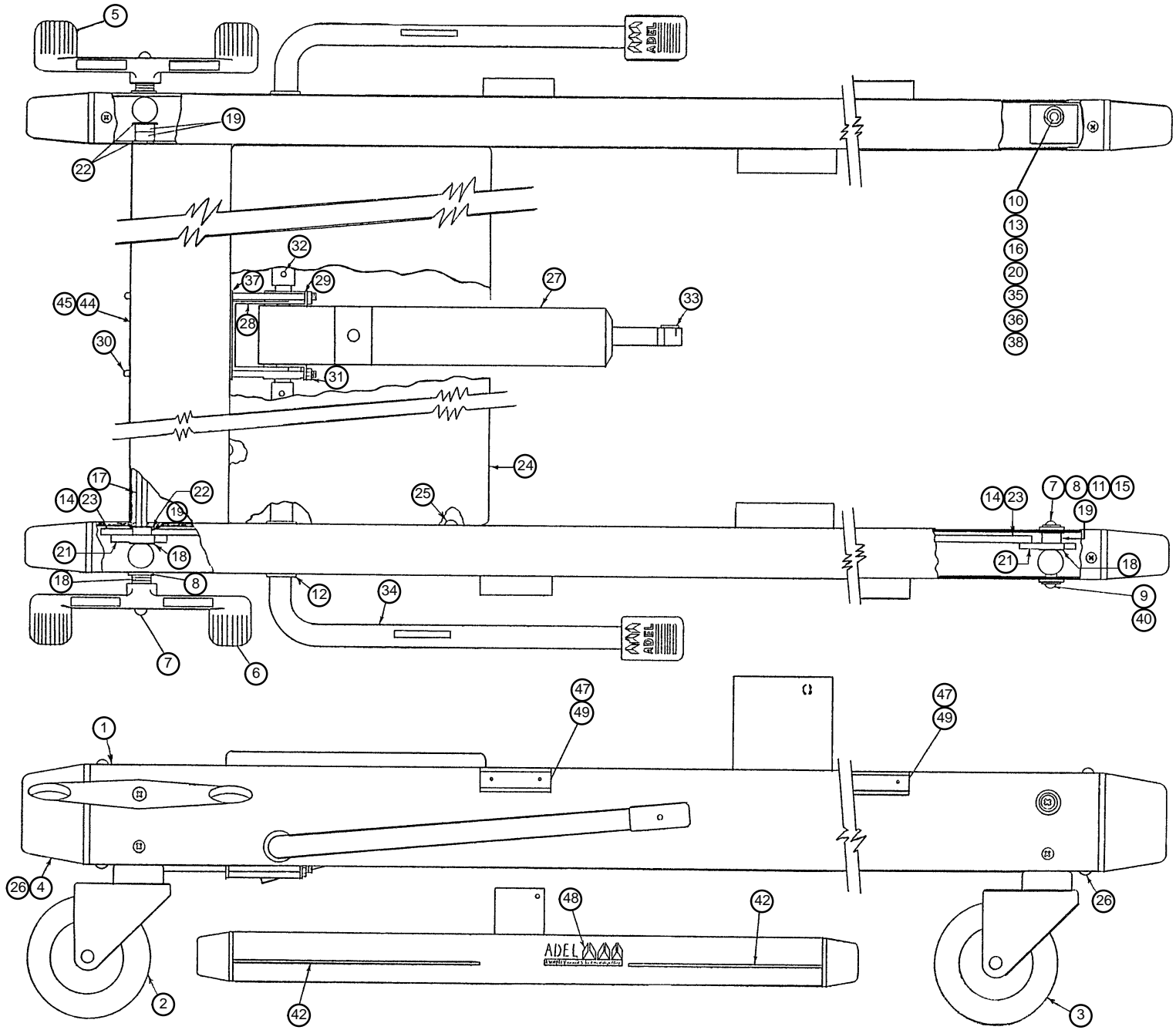
---

# 0600-01-00 Bed Assembly



Item	Part No.	Part Name	Qty.
1	(page 14 & 15)	Frame & Brake Ass'y	1
2	(page 18)	Lift Assembly	1
3	(page 19)	Siderail Ass'y, Left	1
4	(page 19)	Siderail Ass'y, Right	1
7	(page 20)	Foot Pan Ass'y, Left	1
8	(page 20)	Foot Pan Ass'y, Right	1
9	(page 21)	Seat Panel Assembly	1
10	(page 22)	Head Panel Assembly	1
11	(page 23)	Foot Extension Ass'y	1
12	(page 24 & 25)	Litter Assembly	1
13	(page 32)	Hand Grip Assembly	2
14	0608-17-00	Head Mattress Ass'y	1
15	0608-40-00	Foot Mattress Ass'y	1
16	0608-25-00	Basin	1
17	(page 33)	Headboard Assembly	1
18	0589-67-00	I.V. Pole Assembly	1

# 0600-07-00 Frame/Brake Assembly



# 0600-07-00 Frame/Brake Assembly

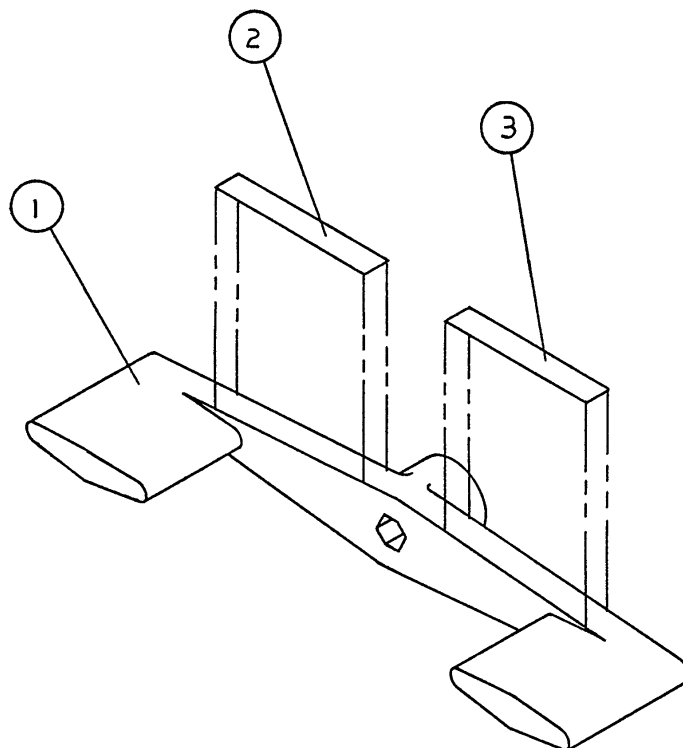
---

Item	Part No.	Part Name	Qty.
1	0600-21-00	Chassis	1
2	0301-23-00	Caster, Brake/Steer	1
3	0301-22-00	Caster, Brake	2
4	0601-18-00	Cap Plug	4
5	(page 16)	Pedal Assembly, Rt.	1
6	(page 16)	Pedal Assembly, Left	1
7	0022-24-00	Truss Hd. Screw	4
8	0601-16-00	Frame Bushing	4
9	0022-18-00	Screw	3
10	0024-03-00	Nut	1
11	0601-20-00	Wheel Shaft	1
12	0602-17-00	Flip Lock Bushing	11
13	0025-00-00	Flat Washer	1
14	0600-09-00	Brake Link	1
15	0601-24-00	Flat Washer	4
16	0600-19-00	5" Caster Plate	1
17	0600-08-00	Hex Shaft	1
18	0025-10-00	Nylon Flat Washer	9
19	0601-21-00	Spacer	4
20	0600-18-00	5" Caster Spacer	1
21	0601-19-00	Brake Lever Link	2
22	0602-43-00	Washer	4
23	0063-01-00	Stryker Tape	A/R
24	0601-23-00	Chassis Cover	1
25	0831-18-00	Truss Hd. Screw	4
26	0087-02-00	Screw	8
27	0602-01-00	Jack Lift Cylinder	1
28	0602-39-00	Pump Clamp Base	1
29	0602-40-00	Pump Clamp Top	2
30	0602-46-00	U-Bolt	2
31	0024-01-00	Nut	4
32	0610-10-00	Groove Pin	2
33	0021-03-00	Bronze Flange Bushing	1
34	(page 17)	Pump Lever Assembly	2
35	0600-20-00	5" Caster	1
36	0814-07-00	Ext. Tooth Lock Washer	1
37	0602-45-00	Pump Clamp Guide	1
38	0600-17-00	Hex Hd. Cap Screw	1
40	0177-00-00	Lock Washer	3
42	0305-03-00	Long Stripe Label	2
44	0608-11-00	Serial No. Label	1
45	0084-07-00	Numerical Label	1
47	0173-08-00	Rivet	8
48	0310-01-00	Adel 2100 Label	2
49	0573-02-00	Clip	4



# 0597-11-00 & 0597-12-00 Pedal Ass'y, Left & Right

---



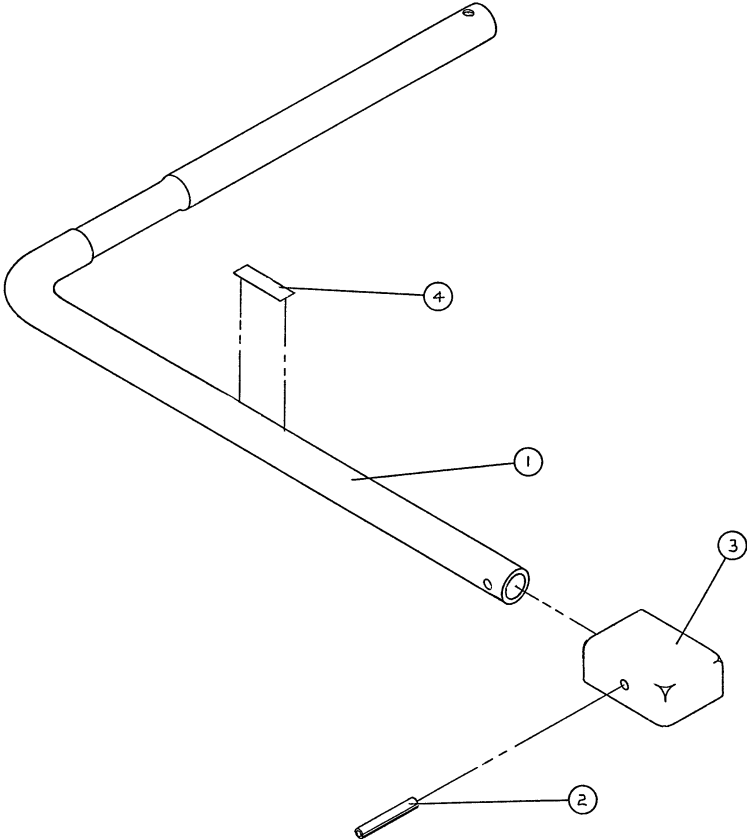
## 0597-11-00 (Left)

Item	Part No.	Part Name	Qty.
1	0007-01-00	Brake Lock Lever, Rt.	1
2	1076-09-00	"Brake" Label	1
3	1076-10-00	"Steer" Label	1

## 0597-12-00 (Right)

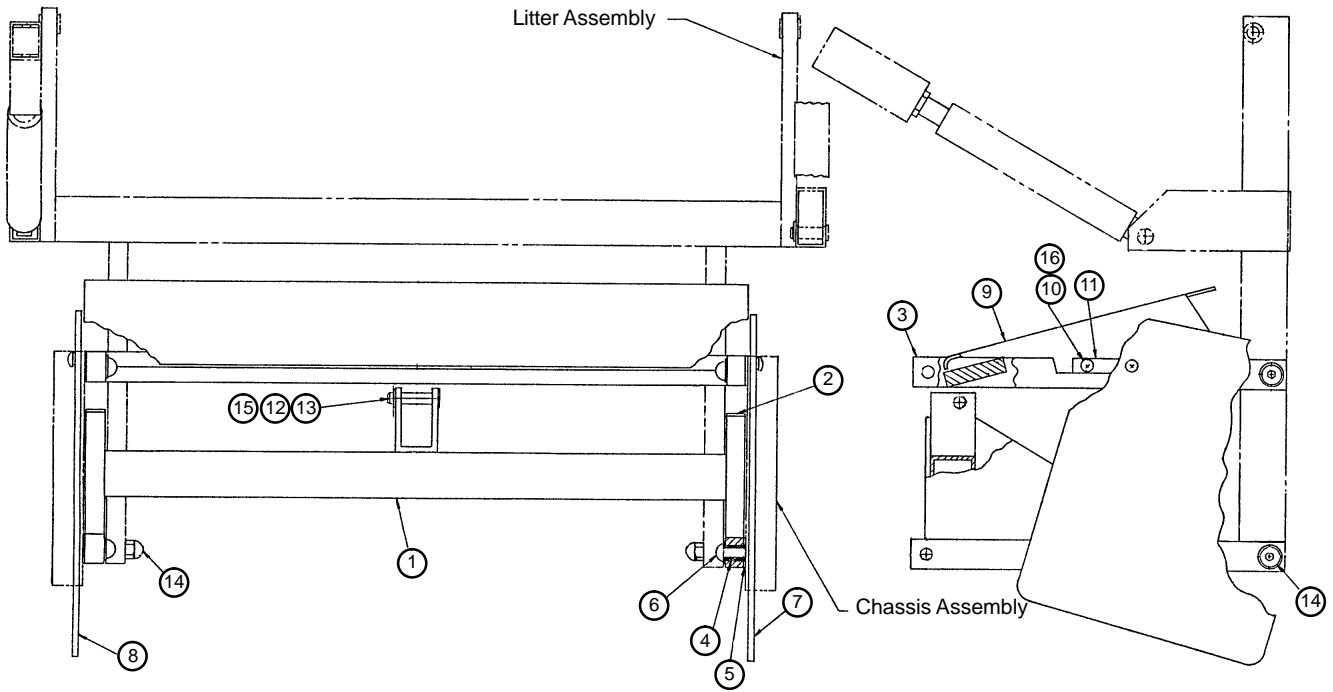
Item	Part No.	Part Name	Qty.
1	0007-00-00	Brake Lock Lever, Lt.	1
2	1076-10-00	"Steer" Label	1
3	1076-09-00	"Brake" Label	1

# 0610-36-00 Pump Lever Assembly



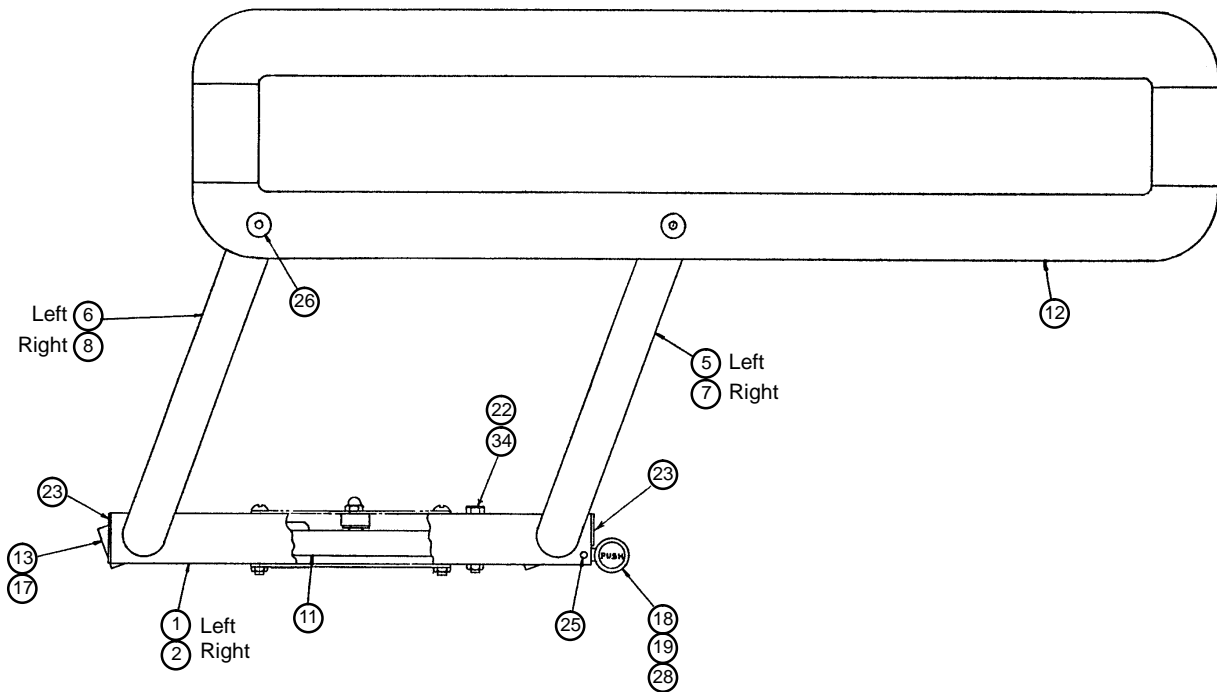
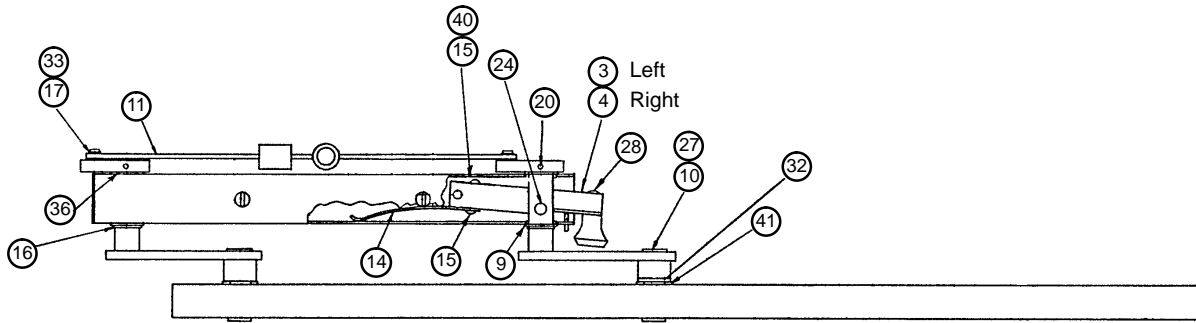
Item	Part No.	Part Name	Qty.
1	0602-18-00	Pump Lever	1
2	0610-22-00	Spring Pin	1
3	0602-49-00	Bed Lift Pedal	1
4	0608-21-00	"Bed" Label	1

# 0602-00-00 Lift Assembly



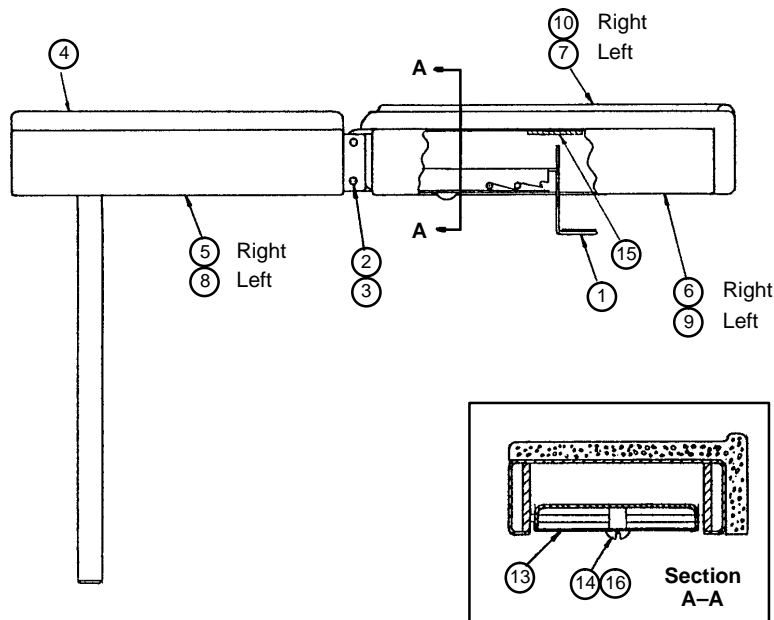
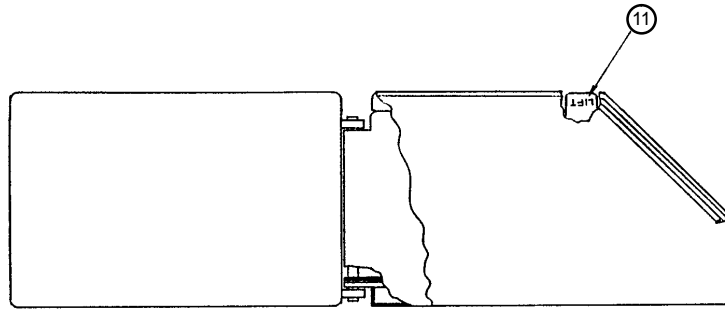
Item	Part No.	Part Name	Qty.
1	0602-35-00	Lift Crank	1
2	0589-86-00	Bumper Strip	2
3	0602-36-00	Idle Crank	1
4	0602-53-00	Flange Bushing	8
5	0602-54-00	Washer	8
6	0606-18-00	Button Hd. Screw	8
7	0602-58-00	Shield, Left	1
8	0602-59-00	Shield, Right	1
9	0602-51-00	Cover	1
10	0022-00-00	Pan Hd. Screw	6
11	0602-57-00	Shield Post	2
12	1366-00-00	Pin	1
13	0020-06-00	Snap Ring	1
14	0606-16-00	Acorn Nut	4
15	0025-11-00	Flat Washer	4
16	0025-02-00	Int. Tooth Lock Washer	4

# 0613-15-00 & 0613-16-00 Siderail Ass'y, Left & Right



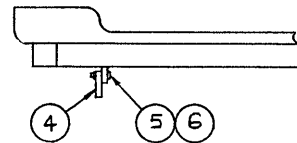
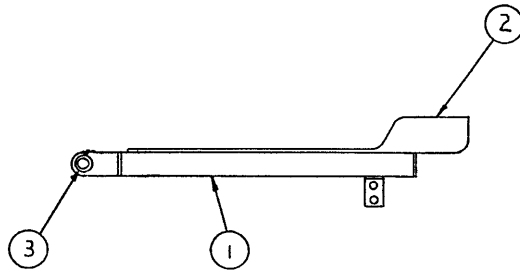
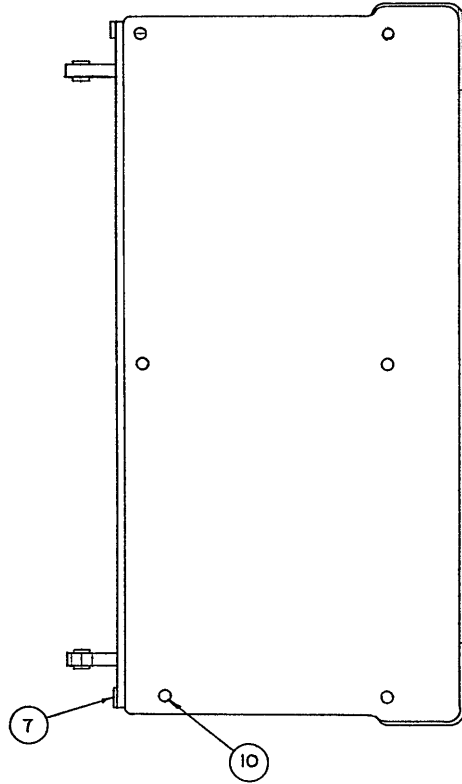
Item	Part No.	Part Name	Qty.	Item	Part No.	Part Name	Qty.
1	0613-60-00	Siderail Tube, Left	1	18	0041-06-00	Knob	1
2	0613-61-00	Siderail Tube, Right	1	19	0610-35-00	Push Label	1
3	0613-03-00	Siderail Latch, Left	1	20	0161-00-00	Roll Pin	2
4	0613-04-00	Siderail Latch, Right	1	22	0024-01-00	Hex Locknut	1
5	0613-09-00	Front Arm, Left	1	23	0610-34-00	Cap	1.5
6	0613-10-00	Rear Arm, Left	1	24	0613-12-00	Dowel Pin	1
7	0613-02-00	Front Arm, Right	1	25	0613-13-00	Set Screw	1
8	0613-08-00	Rear Arm, Right	1	26	0834-05-00	Cap Nut	2
9	0613-07-00	Bronze Flange Bushing	4	27	0022-45-00	Flat Hd. Socket Screw	2
10	0613-66-00	Arm Bushing	2	28	0610-05-00	Round Hd. Screw	1
11	3978-88-00	Idler Link	1	32	0613-21-00	Flat Washer	2
12	0613-11-00	Siderail Wood	1	33	0613-45-00	Washer	2
13	0610-18-00	Siderail Pivot Lever	2	34	0023-22-00	Hex Hd. Cap Screw	1
14	0613-20-00	Latch Spring	1	36	0304-44-00	Washer	2
15	1501-27-00	Pan Hd. Screw	2	40	1500-56-00	Int. Tooth Lock Washer	1
16	0610-24-00	Retaining Ring	2	41	0613-67-00	Flat Washer	2
17	0020-00-00	Retaining Ring	2				

# 0612-14-00 & 0612-15-00 Foot Pan Ass'y, Lt. & Rt.



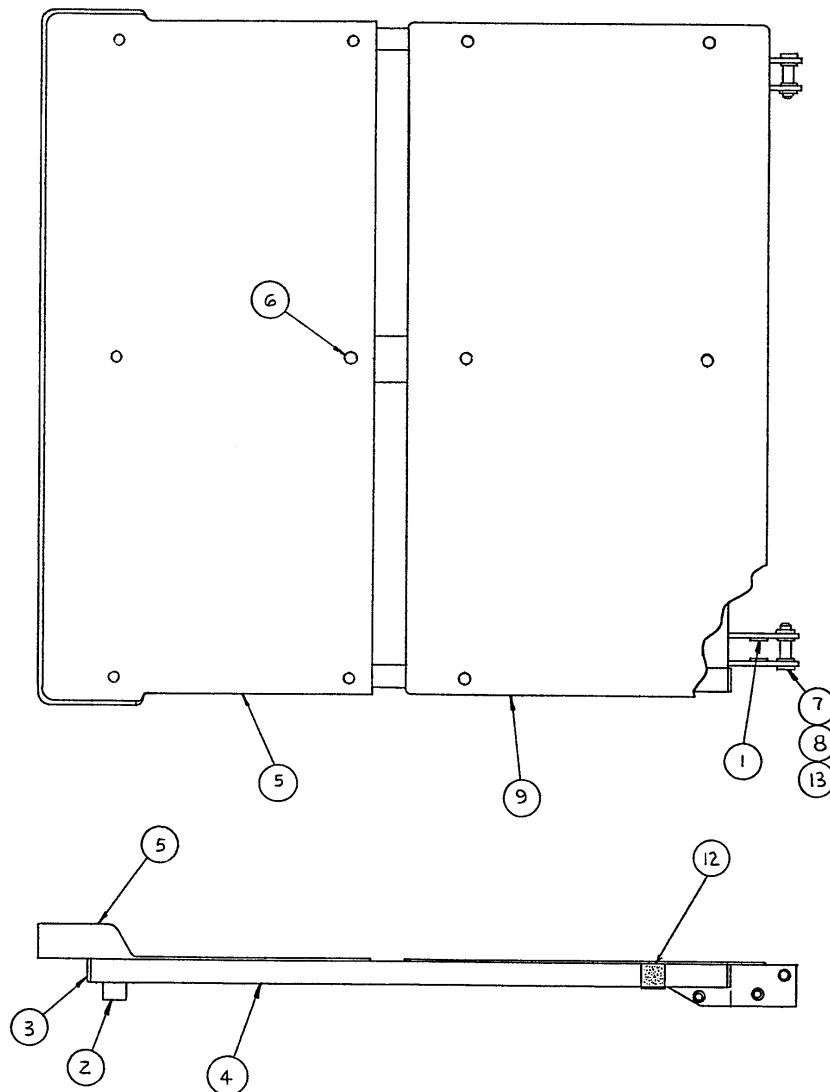
Item	Part No.	Part Name	Qty.
1	0612-09-00	Foot Rest Latch	1
2	0612-08-00	Pivot Pin	2
3	0020-00-00	Retaining Ring	4
4	0612-05-00	Foot Pan Pad	1
5	0612-45-00	Foot Pan, Left	1
6	0612-03-00	Foot Rest, Left	1
7	0612-06-00	Foot Rest Pad, Left	1
8	0612-46-00	Foot Pan, Right	1
9	0612-04-00	Foot Rest, Right	1
10	0612-07-00	Foot Rest Pad, Right	1
11	0804-10-00	Lift Label	2
13	0612-30-00	Cover	1
14	0022-00-00	Screw	1
15	0063-01-00	Stryker Tape	2
16	0025-02-00	Int. Tooth Lock Washer	1
17	0063-02-00	Adhesive Transfer Tape	1.05 yd.
18	0063-03-00	Adhesive Transfer Tape	1.25 yd.

# 0604-31-00 Seat Panel Assembly



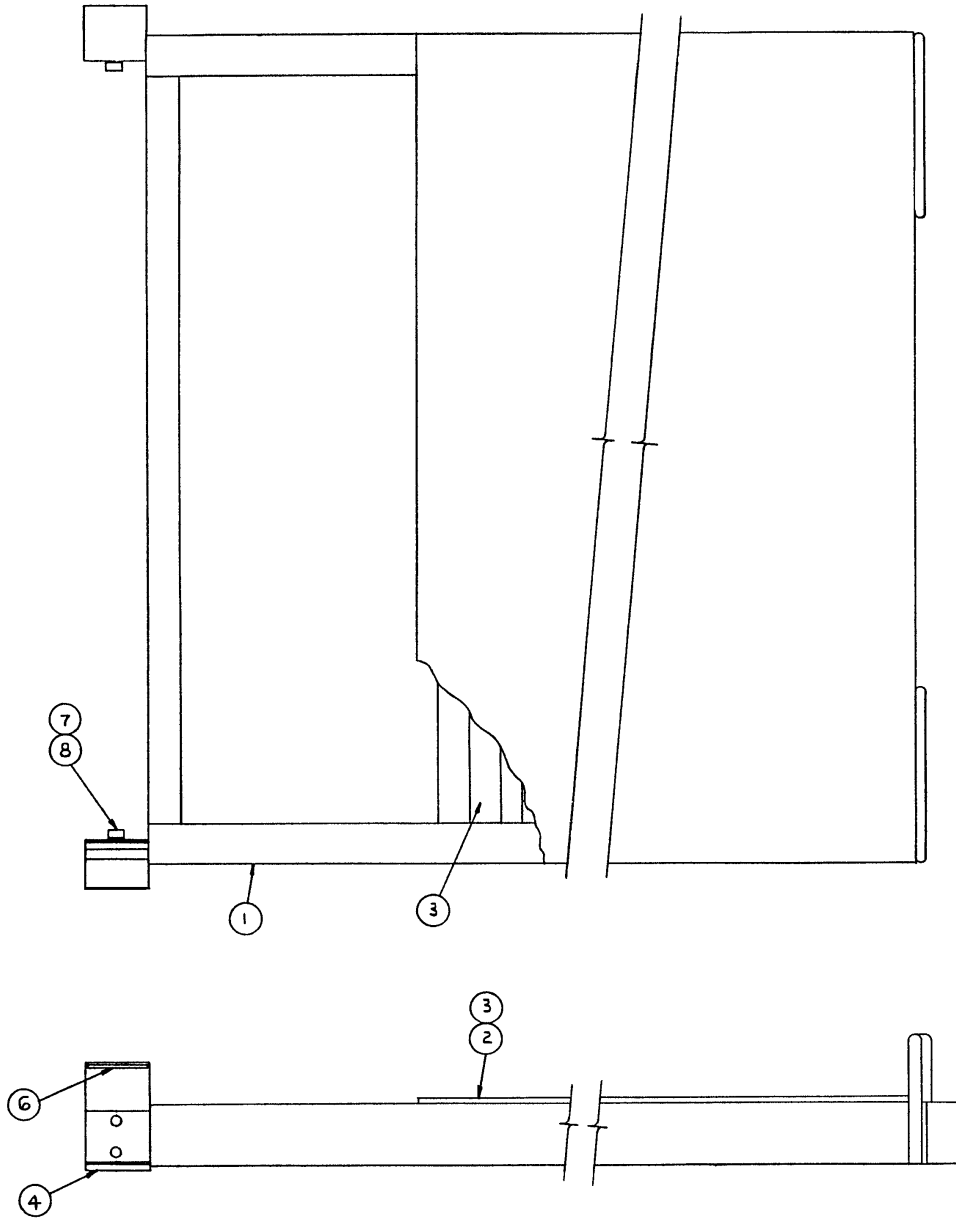
Item	Part No.	Part Name	Qty.
1	0609-10-00	Frame	1
2	0604-18-00	Seat Panel	1
3	0602-47-00	Bushing	4
4	0605-13-00	Link	2
5	0593-16-00	Clevis Pin	2
6	0020-16-00	Bridge Pin	2
7	0612-18-00	Cap	4
9	0608-01-00	Adhesive	A/R
10	3978-87-00	Drive Rivet	6

# 0604-29-00 Head Panel Assembly



Item	Part No.	Part Name	Qty.
1	0602-47-00	Bushing	12
2	0042-07-00	Bumper	2
3	0612-18-00	Cap	4
4	0604-16-00	Head Panel Frame	1
5	0604-18-00	Seat Panel	1
6	3978-87-00	Drive Rivet	12
7	1366-00-00	Pin	2
8	0020-06-00	Retaining Ring	2
9	0604-19-00	Head Panel Lower Top	1
11	0608-01-00	Adhesive	A/R
12	0044-02-00	Hook Fastener Tape	2
13	0025-11-00	Flat Washer	4

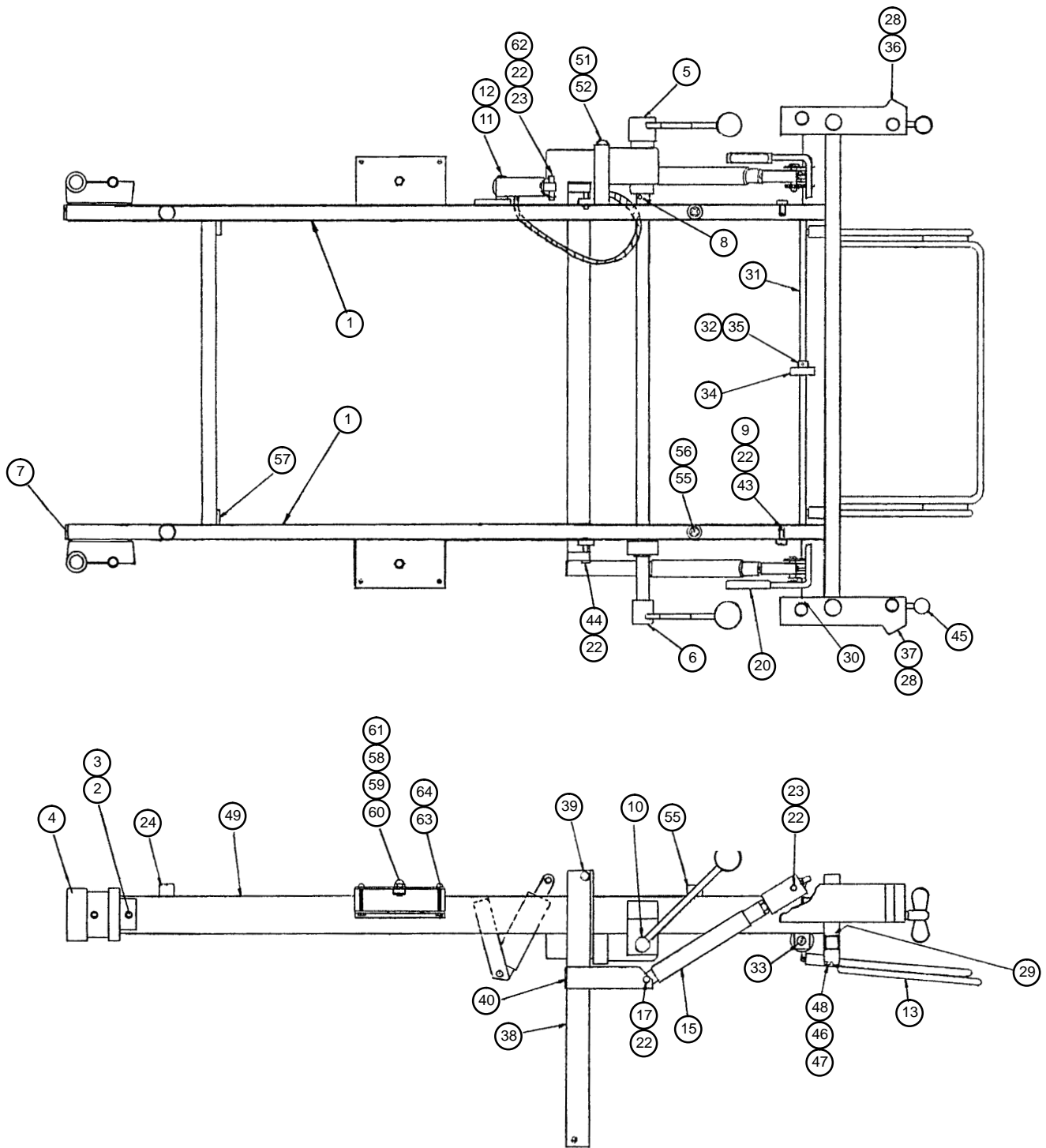
# 0607-16-00 Foot Extension Assembly



Item	Part No.	Part Name	Qty.
1	0607-09-00	Foot Extension Frame	1
2	0607-11-00	Foot Extension Top	1
3	0605-25-00	Tape	5.8 yd.
4	0607-19-00	Foot Extension Cleat	2
6	0063-01-00	Stryker Tape	A/R
7	0025-07-00	Washer	4
8	0023-04-00	Hex Hd. Cap Screw	4



# 0600-23-00 Litter Assembly

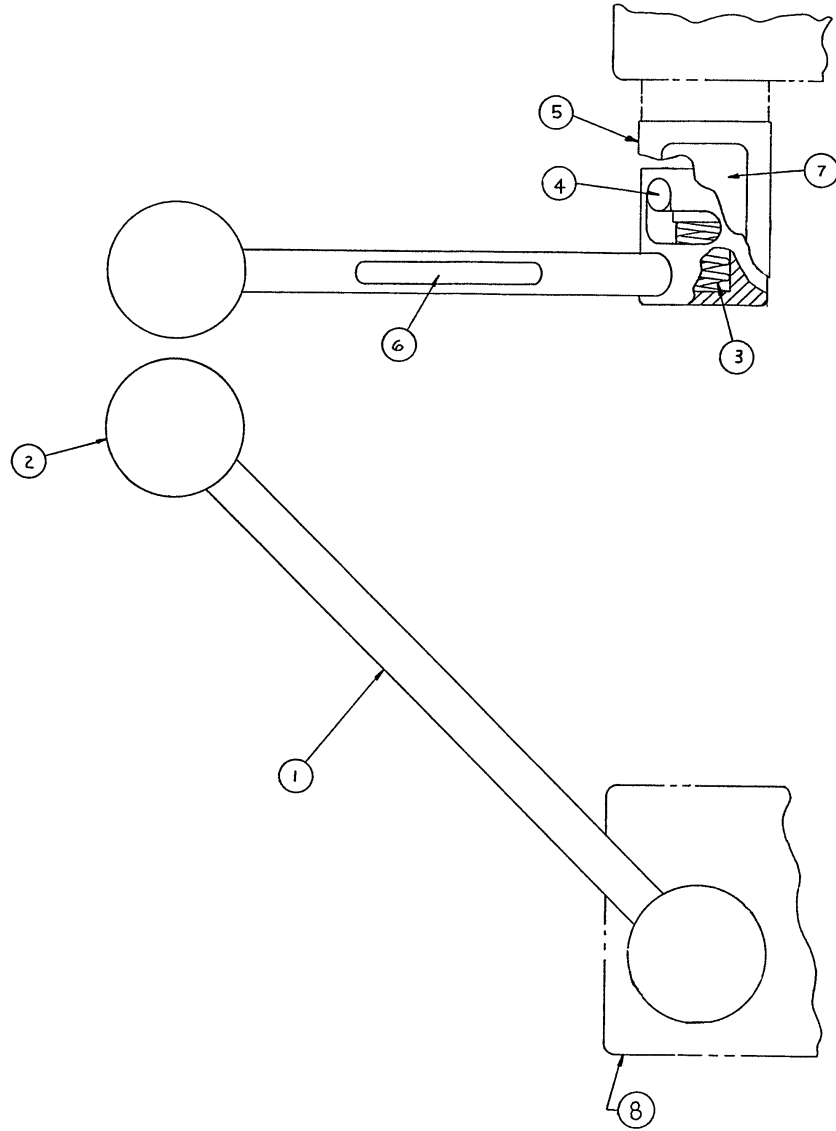


# 0600-23-00 Litter Assembly

---

Item	Part No.	Part Name	Qty.
1	0063-01-00	Stryker Tape	A/R
2	0508-19-00	Soc. Hd. Cap Screw	4
3	0025-30-00	Nylon Flat Washer	4
4	3978-39-00	Headboard Mount	2
5	(page 26)	Head Pump Ass'y, Left	1
6	(page 28)	Transfer Bar Ass'y, Right	1
7	0600-22-00	End Cap	2
8	0161-02-00	Roll Pin	2
9	0020-16-00	Bridge Pin	2
10	0602-17-00	Nylon Fliplock Bushing	1
11	0606-18-00	Screw	1
12	1502-33-00	Hex Nut	1
13	(page 29)	Basin Ring Assembly	1
15	(page 30)	Gas Spring Assembly	2
17	0603-12-00	Pivot Pin	2
20	(page 31)	Tilt Handle Assembly	1
22	0020-06-00	Retaining Ring	7
23	1366-00-00	Pivot Pin	5
24	0042-07-00	Access Cover Bumper	2
28	0063-03-00	Adhesive Transfer Tape	1.4 yd.
29	0042-04-00	Rollstock Rubber	A/R
30	0608-18-00	Short Plunger Spring	2
31	0607-04-00	Roller Lock Shaft	1
32	0607-05-00	Roller Mounting Collar	1
33	0022-24-00	Truss Hd. Screw	2
34	0607-14-00	Ball Bearing	1
35	0610-25-00	Set Screw	1
36	0605-12-00	Litter Bumper Pad, Left	1
37	0605-15-00	Litter Bumper Pad, Right	1
38	0610-09-00	Platform Lift	1
39	0602-47-00	Bronze Flange Bushing	4
40	0612-20-00	End Tube Cap	2
43	0593-16-00	Clevis Pin	2
44	1366-07-00	Pivot Pin	2
45	1141-03-00	T-Knob Assembly	2
46	0023-04-00	Hex Hd. Cap Screw	4
47	0025-05-00	Flat Washer	4
48	0025-07-00	Int. Tooth Lock Washer	4
49	0600-24-00	Litter Frame	1
51	0613-40-00	Button Hd. Screw	2
52	0578-00-00	Int. Tooth Lock Washer	2
55	0608-29-00	Foot Extension Stop	2
56	0608-19-00	Ph. Flat Hd. Screw	2
57	0589-86-00	Bumper Strip	A/R
58	0613-48-00	Stop	2
59	0601-24-00	Washer	2
60	0589-44-00	Flat Hd. Screw	2
61	3978-90-00	Acorn Nut	2
62	0025-11-00	Flat Washer	3
63	0606-17-00	Slotted Rd. Hd. Screw	4
64	0024-01-00	Hex Nut	4

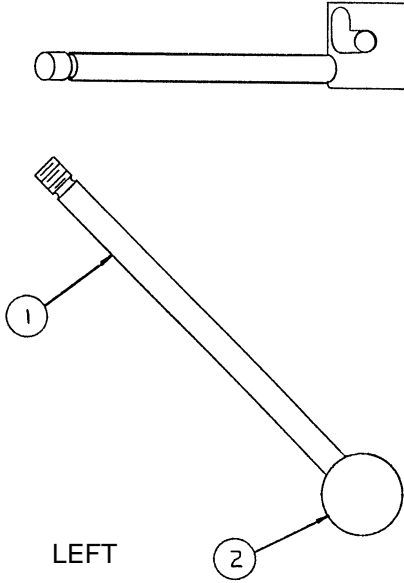
# 0613-37-00 Head Pump Assembly, Left



Item	Part No.	Part Name	Qty.
1	(page 27)	Head Pump Handle, Lt.	1
2	0604-32-00	Pump Handle Knob	1
3	0613-29-00	Spring	1
4	0613-30-00	Groove Pin	1
5	0613-28-00	Cover	1
6	0608-23-00	Head Label	1
7	0615-09-00	Pump Handle Label, Lt.	1
8	0613-39-00	Head Panel Pump Ass'y	1
9	0613-51-00	Hose Guard	1.25'

## 0613-32-00 Head Pump Handle, Left

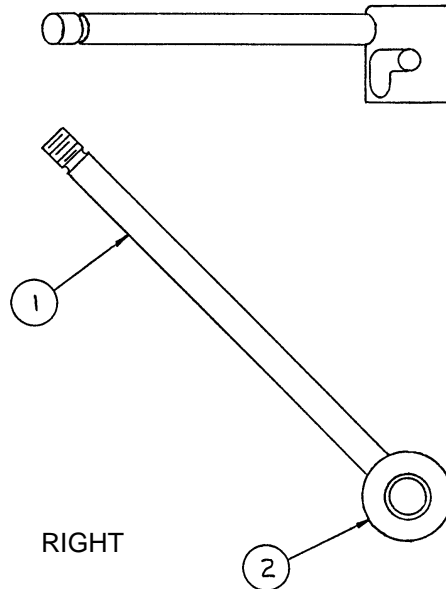
---



Item	Part No.	Part Name	Qty.
1	0613-33-00	Lever	1
2	0613-35-00	Cap	1

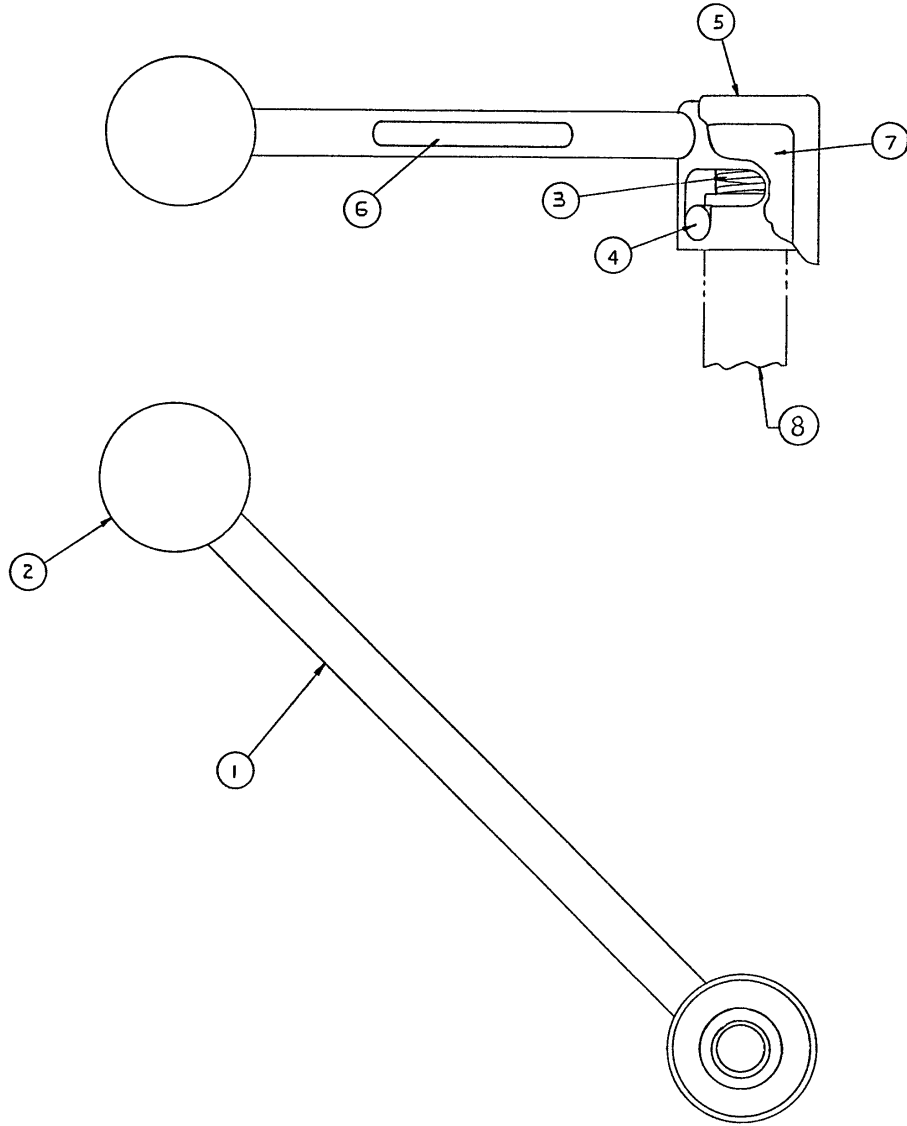
## 0613-31-00 Head Pump Handle, Right

---



Item	Part No.	Part Name	Qty.
1	0613-33-00	Lever	1
2	0613-36-00	Cap	1

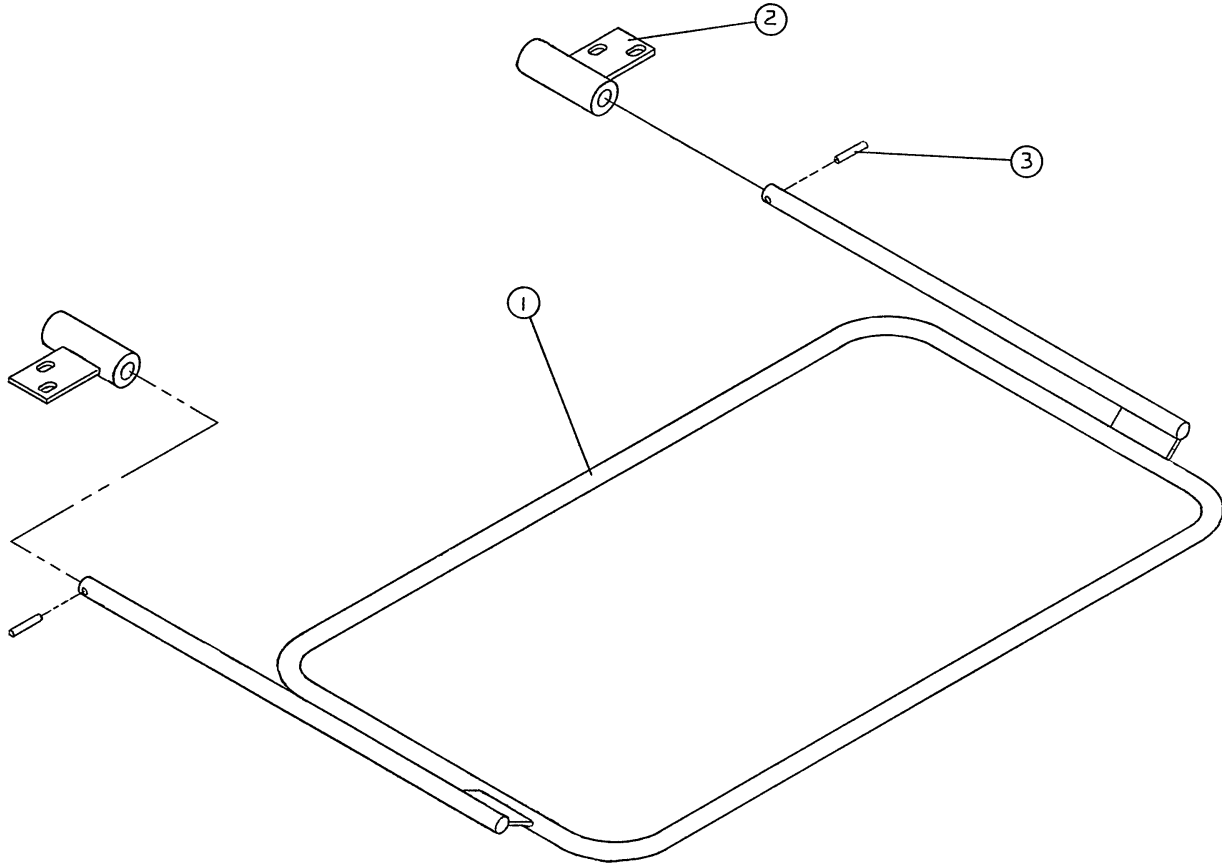
# 0613-38-00 Transfer Bar Assembly, Right



Item	Part No.	Part Name	Qty.
1	(page 27)	Head Pump Handle, Rt.	1
2	0604-32-00	Pump Handle Knob	1
3	0613-29-00	Spring	1
4	0613-30-00	Groove Pin	1
5	0613-28-00	Cover	1
6	0608-23-00	Head Label	1
7	0615-08-00	Pump Handle Label, Rt.	1
8	0613-34-00	Transfer Bar	1

# 0610-37-00 Basin Ring Assembly

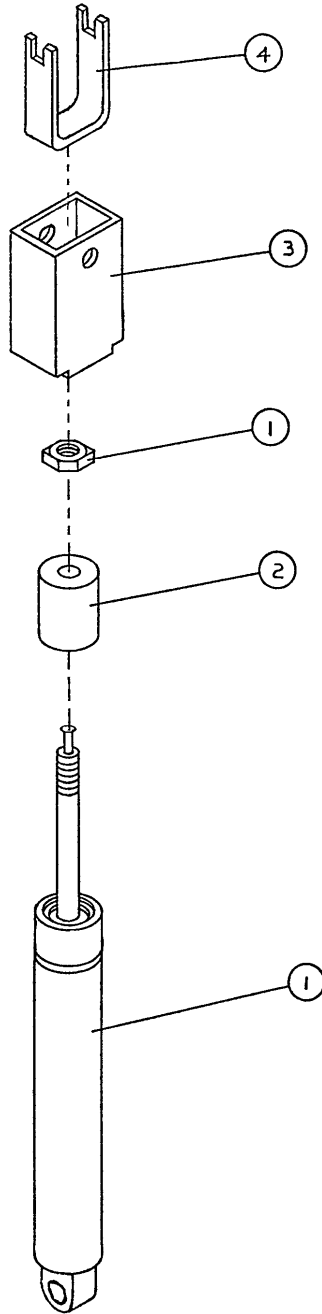
---



Item	Part No.	Part Name	Qty.
1	0612-10-00	Basin Ring	1
2	0612-11-00	Basin Ring Bracket	2
3	0608-20-00	Groove Pin	2

# 0610-42-00 Gas Spring Assembly

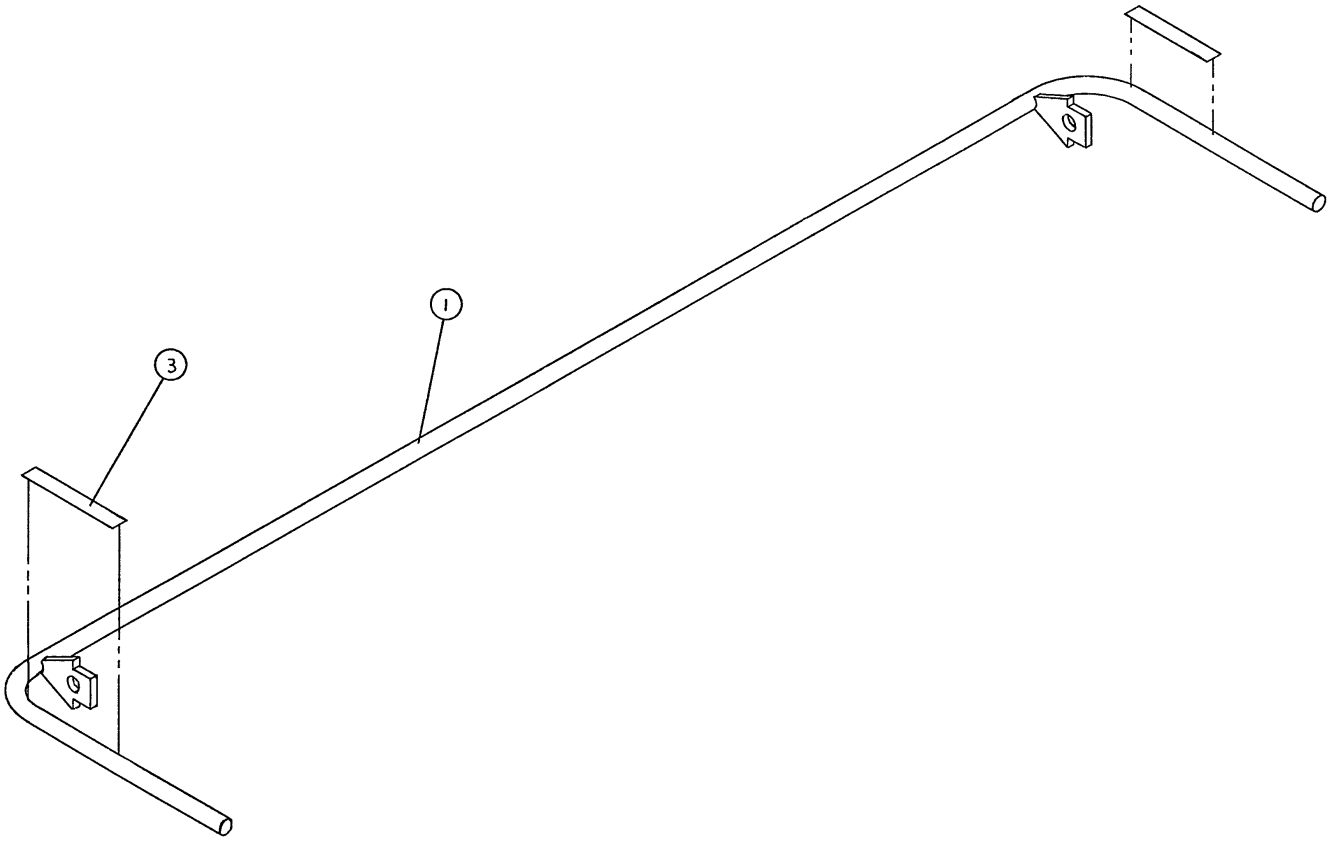
---



Item	Part No.	Part Name	Qty.
1	0603-08-00	Bloc-o-Lift Tilt Spring	1
2	0603-14-00	Tilt Stop Spacer	1
3	0610-07-00	Gas Spring Pivot Mount	1
4	0610-08-00	Gas Spring Cam Slide	1

# 0610-40-00 Tilt Handle Assembly

---

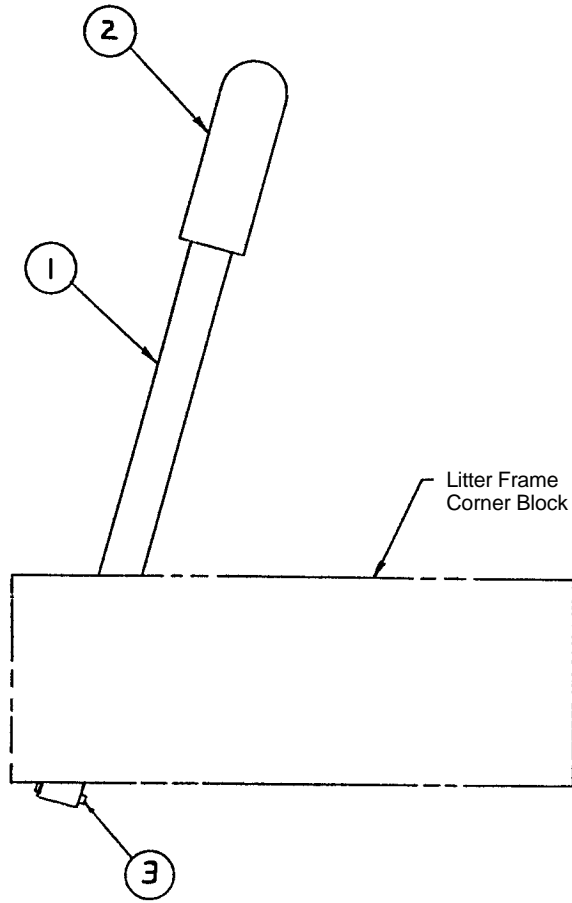


Item	Part No.	Part Name	Qty.
1	0603-09-00	Cam Tilt Handle	1
3	0608-22-00	Tilt Label	2



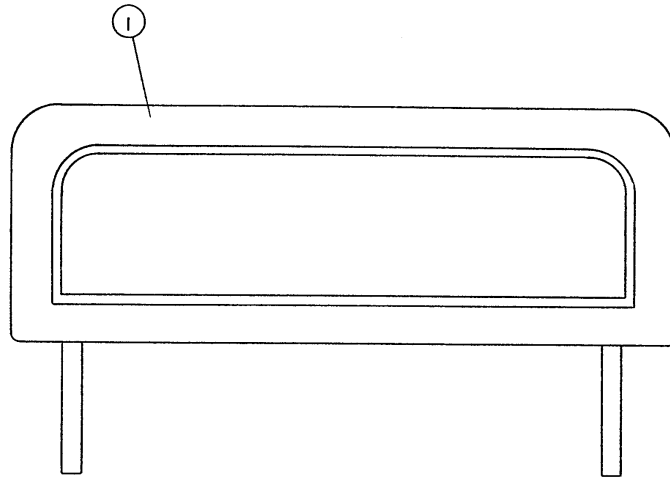
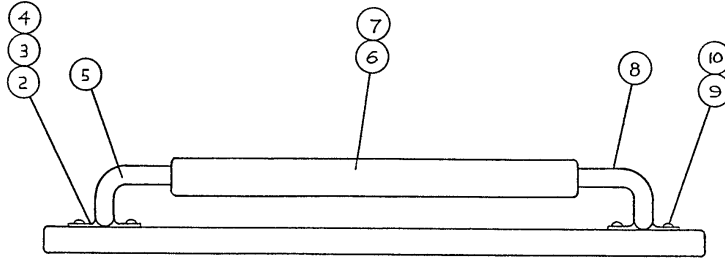
# 0612-32-99 Hand Grip Assembly

---



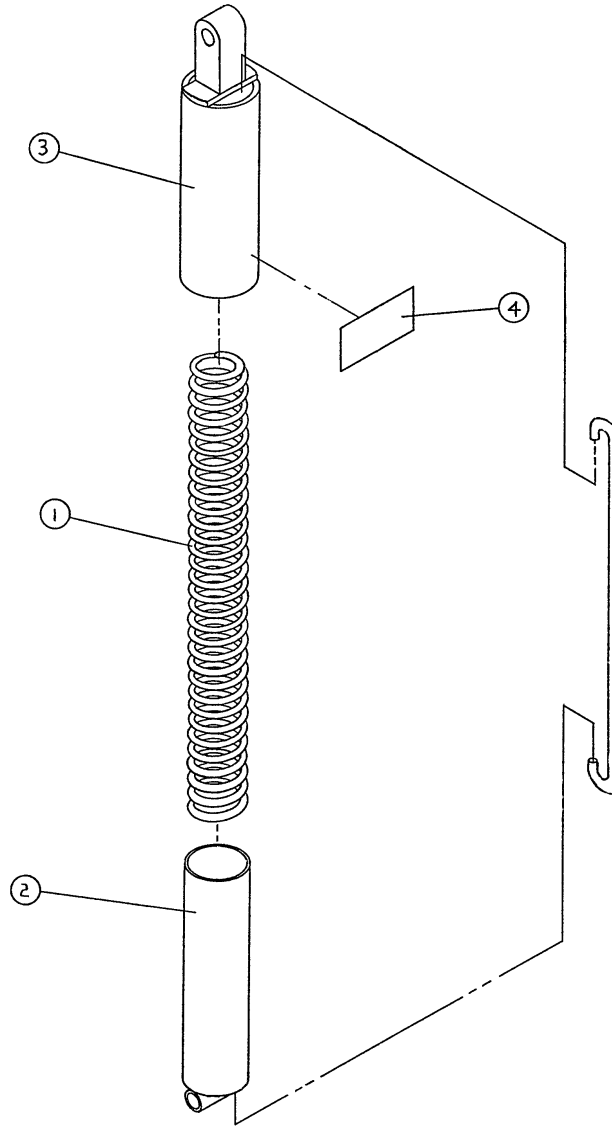
Item	Part No.	Part Name	Qty.
1	0612-13-00	Hand Grip Bar	1
2	0612-22-00	Grip	1
3	0608-20-00	Spring Pin	1

# 0600-13-00 Head Board Assembly



Item	Part No.	Part Name	Qty.
1	0600-12-00	Oak Headboard	1
2	0025-02-00	Int. Tooth Lock Washer	2
3	0022-00-00	Phillips Pan Hd. Screw	2
4	0526-06-00	Headboard Mtg. Bracket	2
5	3978-69-00	Push Bar, Right	1
6	0589-90-00	Foam Cover	1
7	3978-47-00	Push Tube Handle	1
8	3978-70-00	Push Bar, Left	1
9	0690-01-00	Tapping Screw	8
10	0025-05-00	Flat Washer	8

# 0610-41-00 Counterbalance Spring Assembly



Item	Part No.	Part Name	Qty.
1	0604-01-00	Hd. Panel Cntral. Spring	1
2	0604-27-00	Spring Housing, Bottom	1
3	0604-28-00	Spring Housing, Top	1
4	0604-07-00	Warning Label	1

# Warranty

---

## **Limited Warranty:**

Stryker Adel warrants to the original purchaser that its products should be free from defects in material and workmanship for a period of one (1) year after date of delivery. Stryker Adel's obligation under this warranty is expressly limited to supplying replacement parts and labor for, or replacing, at its option, any product which is, in the sole discretion of Stryker Adel, found to be defective. Stryker Adel warrants to the original purchaser that the frame and welds on its beds will be free from structural defects for as long as the original purchaser owns the bed. If requested by Stryker Adel, products or parts for which a warranty claim is made shall be returned prepaid to Stryker Adel's factory. Any improper use or any alteration or repair by others in such manner as in Stryker Adel's judgement affects the product materially and adversely shall void this warranty. No employee or representative of Adel is authorized to change this warranty in any way.

This statement constitutes Stryker Adel's entire warranty with respect to the aforesaid equipment. STRYKER ADEL MAKES NO OTHER WARRANTY OR REPRESENTATION, EITHER EXPRESSED OR IMPLIED, EXCEPT AS SET FORTH HEREIN. THERE IS NO WARRANTY OF MERCHANTABILITY AND THERE ARE NO WARRANTIES OF FITNESS FOR ANY PARTICULAR PURPOSE. IN NO EVENT SHALL STRYKER ADEL BE LIABLE HEREUNDER FOR INCIDENTAL OR CONSEQUENTIAL DAMAGES ARISING FROM OR IN ANY MANNER RELATED TO SALES OR USE OF ANY SUCH EQUIPMENT.

## **To Obtain Parts and Service:**

Stryker Adel products are supported by a nationwide network of dedicated Stryker Adel Field Service Representatives. These representatives are factory trained, available locally, and carry a substantial spare parts inventory to minimize repair time. Simply call your local representative, or call Stryker Adel Customer Service at (800) 327-0770.

## **Supplemental Warranty Coverage:**

Stryker Adel has developed a comprehensive program of extended warranty options designed to keep your equipment operating at peak performance at the same time it eliminates unexpected costs. We recommend that these programs be activated *before* the expiration of the new product warranty to eliminate the potential of additional equipment upgrade charges. Stryker Adel offers the following Supplemental Warranties:

### **Extended (Parts and Labor)**

- All replacement parts (excluding mattresses and consumable items)
- Labor and travel for *all* scheduled and unscheduled calls
- Biannual Preventive Maintenance Inspections and repairs
- JCAHO paperwork for preventive maintenance
- Priority Emergency Service

### **Standard (Labor Only):**

- Labor and travel for *all* scheduled and unscheduled calls
- Biannual Preventive Maintenance Inspections and repairs
- JCAHO paperwork for preventive maintenance
- Priority Emergency Service

### **Basic (Parts Only):**

- All replacement parts (excluding mattresses and consumable items)
- Priority Emergency Service

**Please call your local representative, or call (800) 327-0770 for further information**

# Warranty

---

## **Return Authorization:**

Merchandise cannot be returned without approval from the Stryker Adel Customer Service Department. An authorization number will be provided which must be printed on the returned merchandise. Stryker Adel reserves the right to charge shipping and restocking fees on returned items.

SPECIAL, MODIFIED, OR DISCONTINUED ITEMS NOT SUBJECT TO RETURN.

## **Damaged Merchandise:**

ICC Regulations require that claims for damaged merchandise must be made with the carrier within fifteen (15) days of receipt of merchandise. **DO NOT ACCEPT DAMAGED SHIPMENTS UNLESS SUCH DAMAGE IS NOTED ON THE DELIVERY RECEIPT AT THE TIME OF RECEIPT.** Upon prompt notification, Stryker Adel will file a freight claim with the appropriate carrier for damages incurred. Claim will be limited in amount to the actual replacement cost. In the event that this information is not received by Stryker Adel within the fifteen (15) day period following the delivery of the merchandise, or the damage was not noted on the delivery receipt at the time of receipt, the customer will be responsible for payment of the original invoice in full.

Claims for any short shipment must be made within thirty (30) days of invoice.



6300 Sprinkle Road, Kalamazoo, MI 49001-9799

(800) 327-0770

---

DH 4/95 88-0601-26-00 REV 01 ECN #5154