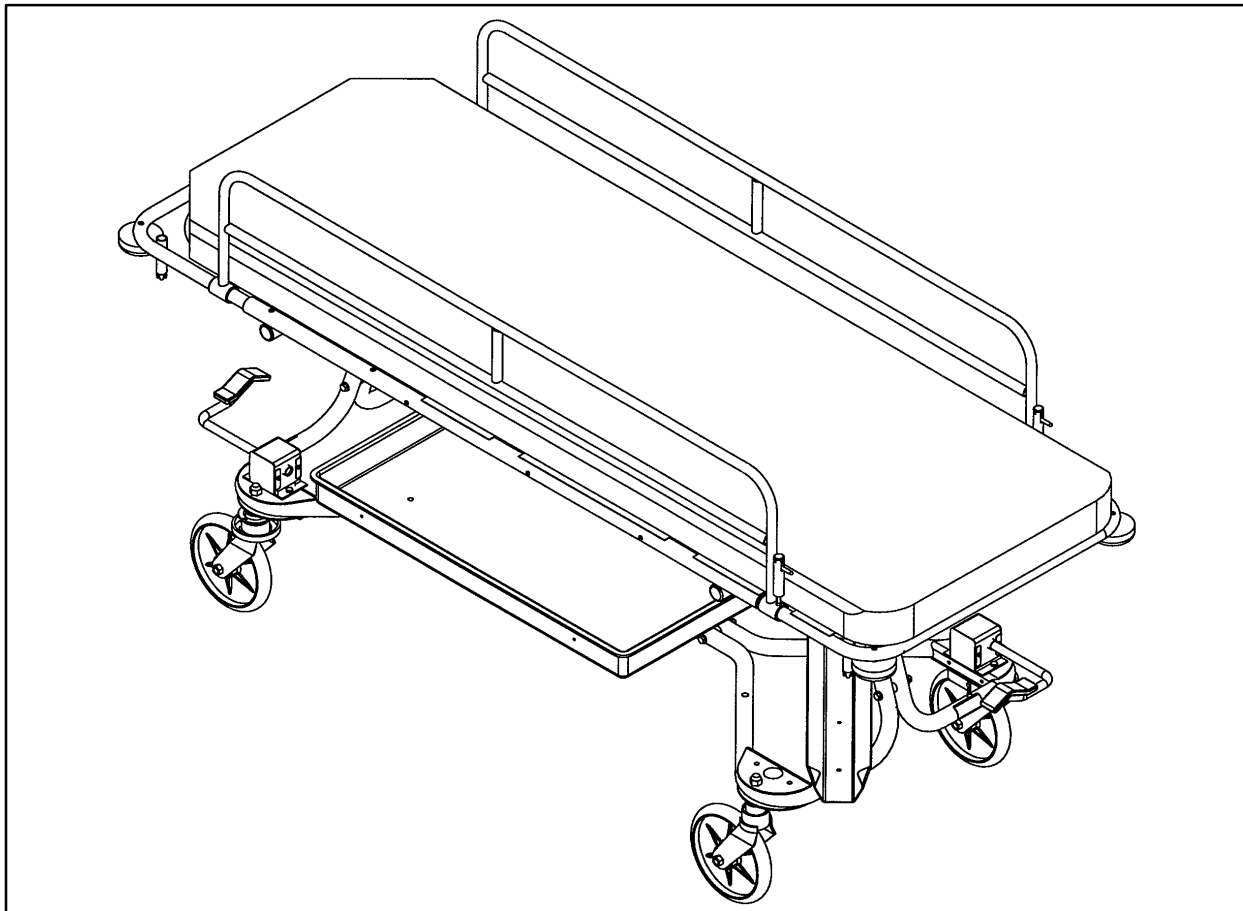


---

**IMPORTANT**  
File in your  
maintenance  
records

**stryker**<sup>®</sup>  
Medical



---

# 700 Transport Gurney

---

## OPERATIONS AND MAINTENANCE MANUAL

For Parts or Technical Assistance:  
1-800-327-0770

---

# Table of Contents

---

## Introduction

Specifications .....	2
Warning / Caution / Note Definition .....	2

## Operation Guide

Operating Brake/Steer Pedals .....	3
Operating Manual Fowler .....	3
Using Folddown Siderails .....	4
Operating Optional Foot Extension/Defibrillator Tray .....	4
Operating Optional Removable I.V. Pole .....	5

## Preventative Maintenance

Cleaning .....	6
Biannual Checklist .....	6

## Service Information

Folddown Siderail Latch Adjustment .....	7
--	---

## Assembly Drawings and Parts Lists

700-1-10 Base Assembly .....	8, 9
700-15-10 Brake Subassembly .....	10
700-12-10 Caster Assembly .....	11
700-10-10 Steerlock Caster Assembly .....	12
700-30-10 Litter Assembly .....	13
700-25-10 Folddown Siderail Assembly .....	14
1010-26-17 Siderail Assembly .....	15
700-20-10 Swingdown Siderail Assembly .....	16
700-120-10 Storage Tray Assembly .....	17
700-140-10 Oxygen Bottle Holder Assembly .....	18
390-25 I.V. Pole Assembly .....	19
700-142-10 I.V. Holder Mounting Kit .....	19
741-34 Foot Board/Chartholder Assembly .....	20
741-48-14 Defibrillator Tray Assembly .....	21
1010-50-10 Foot Extension/Defibrillator Tray Assembly .....	22

## Replacement Parts .....

23

## Warranty

Obtaining Parts and Service .....	24
Supplemental Warranty Coverage .....	24
Return Authorization .....	25
Freight Damage Claims .....	25

# Introduction

---

## INTRODUCTION

This manual is designed to assist you with the operation and maintenance of the 700 Transport Gurney. Read it thoroughly before using the equipment or beginning any maintenance on it.

## SPECIFICATIONS

Maximum Weight Capacity	500 pounds
Overall Length/Width	78"/28"
Patient Surface Length/Width	75"/26"
Fixed Height	30"
Fowler Angle	0° to 90°

## WARNING / CAUTION / NOTE DEFINITION

The words WARNING, CAUTION and NOTE carry special meanings and should be carefully reviewed.

---

### WARNING

The personal safety of the patient or user may be involved. Disregarding this information could result in injury to the patient or user.

---

---

### CAUTION

These instructions point out special procedures or precautions that must be followed to avoid damaging the equipment.

---

### NOTE

This provides special information to make maintenance easier or important instructions clearer.

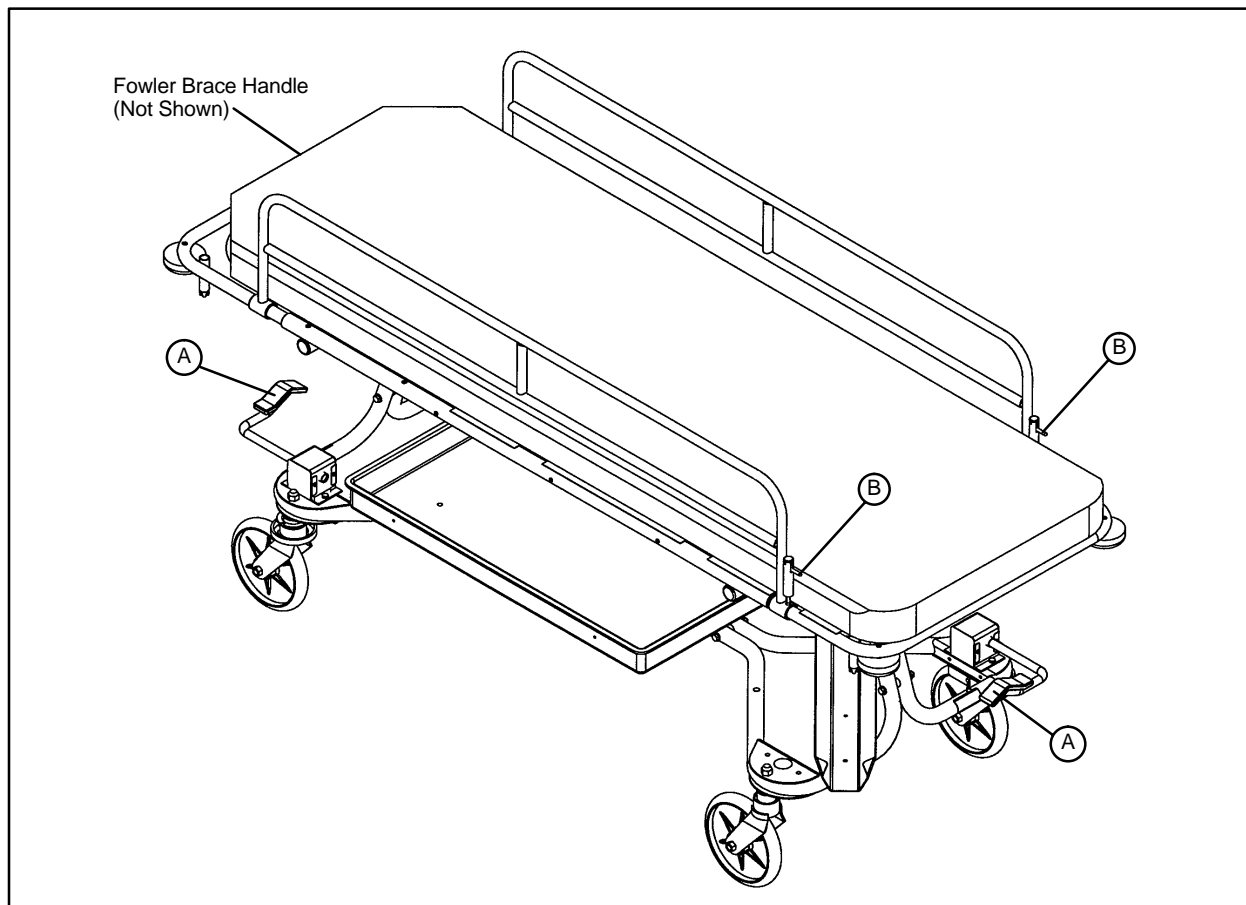
---

### WARNING

Patients should be discouraged from sitting directly on the ends of the stretcher. Excessive weight will cause the litter surface to tip up, possibly causing patient injury.

---

# Operation Guide



## OPERATING BRAKE/STEER PEDALS



The Brake/Steer pedals (A) are located at the patient's head end, right and foot end, left. To engage the brake, push fully down on the pedal. To engage the steer caster, lift fully up on the pedal.

## OPERATING MANUAL FOWLER

To raise the Fowler, use the brace handle to lift the Fowler to the desired angle. While holding onto the corner of the Fowler, lower the brace into the support brackets. Be sure the brace is securely in place before releasing the Fowler.

To lower the Fowler, securely hold the corner of the Fowler and lift the brace using the brace handle. Lower the Fowler and brace to the desired position.

## USING SWINGDOWN SIDERAILS

To lower the siderail, pull up on the locking pin (B) at the foot end of the siderail. Push the siderail toward the head end of the stretcher and swing it down. When raising the siderail, swing it up and be sure the locking pin engages and the siderail is secure.

# Operation Guide

## USING FOLDDOWN SIDERAILS

### CAUTION

Be sure the siderail latching mechanism is working properly at all times. If it is not, refer to page 7 for siderail latch adjustment.

**To engage siderails:** Pull up siderail and raise to full up position so that latch engages.

**To disengage siderails:** Pull up on latch and guide siderail to the full down position.

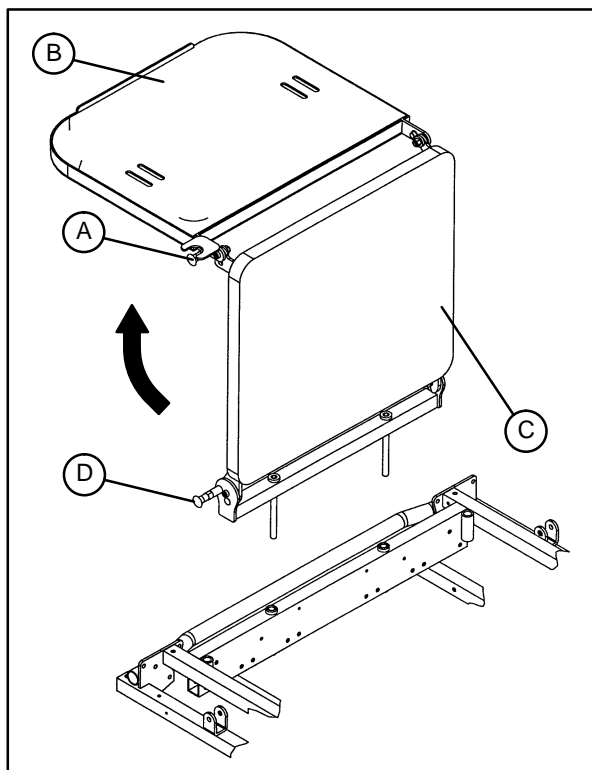
### CAUTION

Do not allow siderail to lower on its own.

## OPERATING OPTIONAL FOOT EXTENSION/DEFIBRILLATOR TRAY

To use as a defibrillator tray, pull out top knob (A) and pivot tray (B) over the foot extension until tray extends flat over foot end of stretcher.

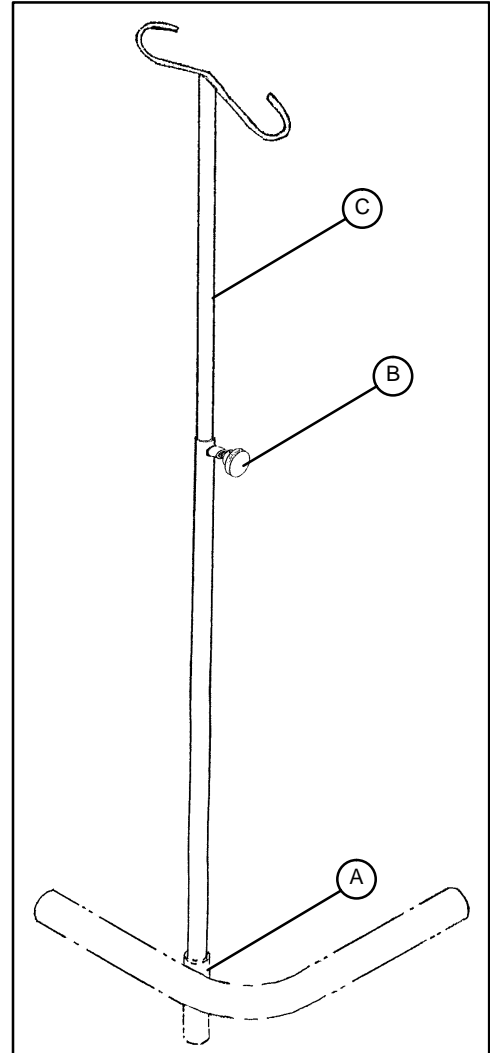
To use as a foot extension, pull out knob (A) and pivot the defibrillator tray back until it locks against the foot extension (C). While holding onto the assembly, pull out bottom knob (D) and lower the foot extension down until it is flat.



# Operation Guide

## OPERATING OPTIONAL REMOVABLE I.V. POLE

Insert the I.V. pole into one of the four receptacles on the corner of the litter frame (A). Turn knob (B) counterclockwise to loosen it. Grasp the top section (C) of the pole and raise or lower it to the desired height. Turn knob (B) clockwise to tighten it until the top section of the pole is held securely in place.



# Preventative Maintenance

---

## CLEANING

1. Hand wash all surfaces of the bed with warm water and mild detergent. Dry thoroughly.
2. Clean Velcro **AFTER EACH USE**. Saturate Velcro with disinfectant and allow disinfectant to evaporate. (Appropriate disinfectant for nylon Velcro should be determined by the hospital.)

## NOTE

Quaternary Germicidal Disinfectants, used as directed, and/or Chlorine Bleach products, typically 5.25% Sodium Hypochlorite in dilutions ranging between 1 part bleach to 100 parts water, and 2 parts bleach to 100 parts water are not considered mild detergents. These products are corrosive in nature and may cause damage to your stretcher if used improperly. If these types of products are used to clean Stryker patient handling equipment, measures must be taken to insure the stretchers are rinsed with clean water and thoroughly dried following cleaning. Failure to properly rinse and dry the stretchers will leave a corrosive residue on the surface of the stretcher, possibly causing premature corrosion of critical components. Failure to follow the above directions when using these types of cleaners may void this product's warranty.

## BIANNUAL CHECKLIST

- \_\_\_\_\_ All fasteners secure (reference all assembly prints)
- \_\_\_\_\_ Siderails move and latch properly
- \_\_\_\_\_ Casters lock with brake pedals engaged
- \_\_\_\_\_ Steer function working properly on both casters
- \_\_\_\_\_ All casters secure and swivel properly
- \_\_\_\_\_ Body restraints working properly
- \_\_\_\_\_ I.V. pole intact and operating properly
- \_\_\_\_\_ Oxygen bottle holder intact and operating properly
- \_\_\_\_\_ Fowler operates and latches properly
- \_\_\_\_\_ No rips or cracks in mattress cover
- \_\_\_\_\_ Adequate grease on brake cam

Serial No. \_\_\_\_\_

\_\_\_\_\_

\_\_\_\_\_

\_\_\_\_\_

\_\_\_\_\_

Completed By: \_\_\_\_\_

Date: \_\_\_\_\_

# Service Information

---

## FOLDDOWN SIDERAIL LATCH ADJUSTMENT

### Required Tools:

1/8 Hex Allen Wrench

---

### WARNING

The siderail latch adjustment is pre-set at the factory, and there should not normally be a need for readjustment. If adjustment must be done it is important to follow the procedure below. If it is not done properly, injury to the patient or user could occur.

---

### Adjustment Procedure:

1. Using a 1/8 hex Allen wrench, adjust the hex Allen screw located on the latch assembly opposite the latch. Turning the Allen screw clockwise will **DECREASE** the amount of "play" in the latching mechanism. Turning counterclockwise will **INCREASE** the amount.

### NOTE

The amount of "play" in the siderail, when in full up engaged position, should be approximately 1/8 to 3/16 inches.

---

### CAUTION

Too much "play" when the siderail is in the full up engaged position will give the siderail the appearance of being unstable and could also cause premature wearing of the latch system.

Too little "play" will obstruct the latch and keep it from engaging completely in the full up position, which may cause damage to the latch and/or injury to the patient or user.



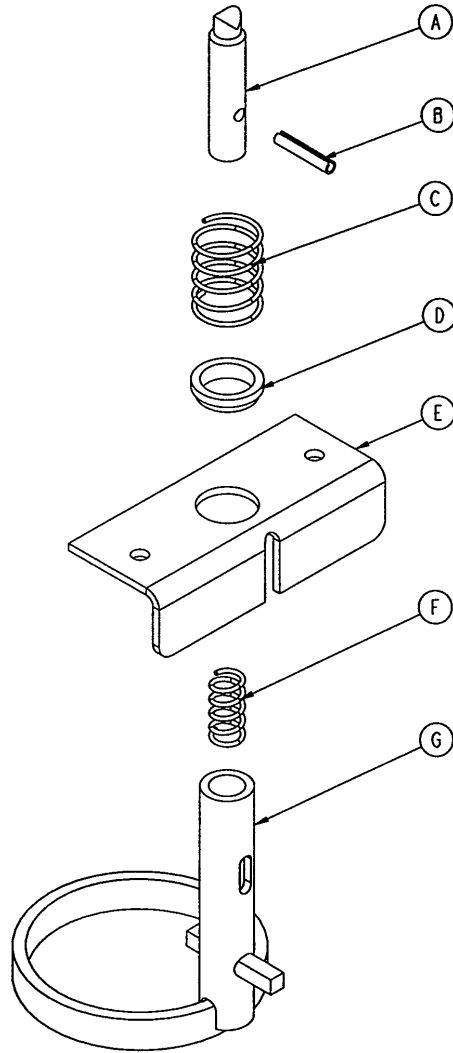


# 700-1-10 Base Assembly

---

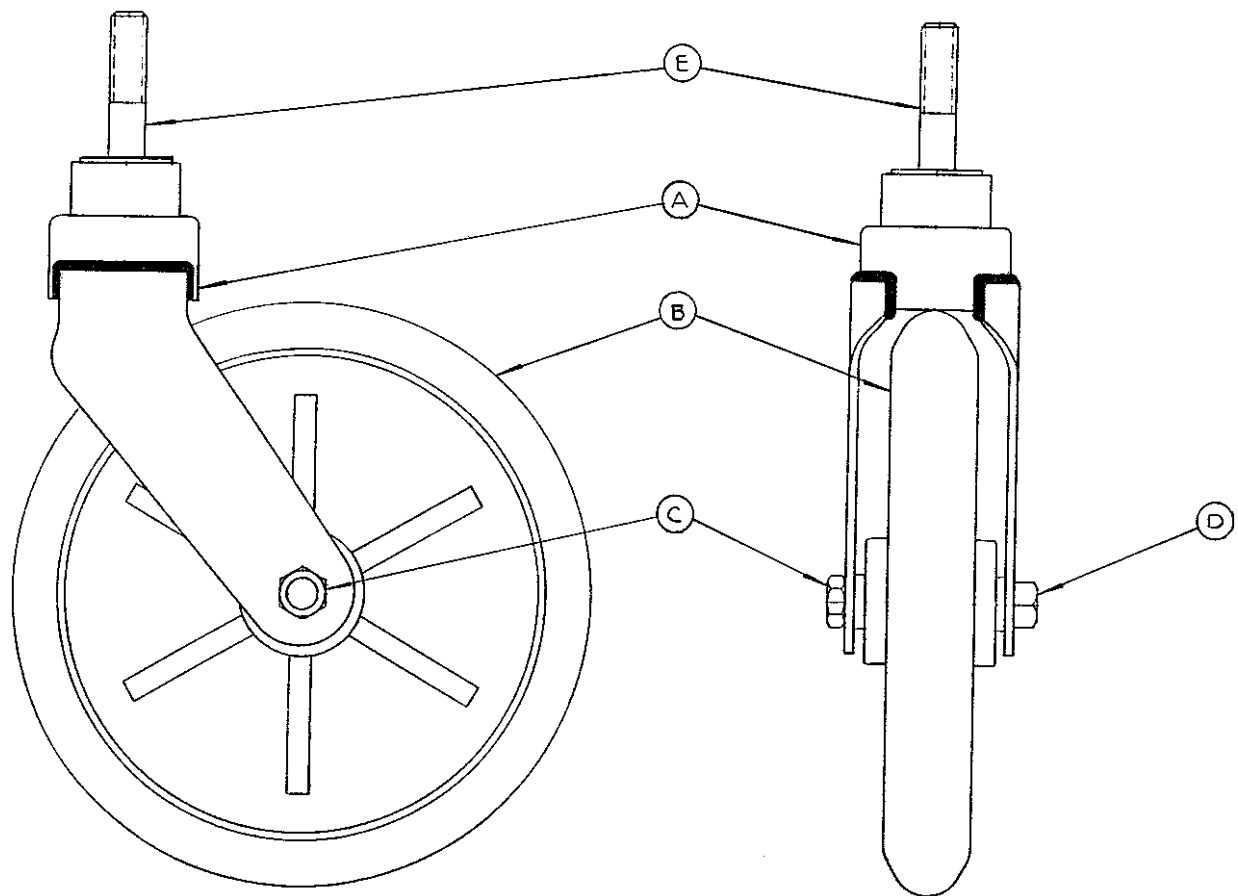
Item	Part No.	Part Name	Qty.
A	700-1-50	Base Tube Weldment	2
B	37-81	Tube Plug	4
C	700-1-4	Base Tube Spacer	6
D	37-59	Hole Plug	2
E	390-38-3	Curved Washer	12
F	3-11	Hex Hd. Cap Screw	6
G	16-36	Fiberlock Nut	6
H	(page 12)	Steer Lock Caster Ass'y	2
J	(page 11)	Caster Assembly	2
K	16-57	Fiberlock Nut	4
L	(page 10)	Brake Subassembly	2
M	700-15-31	Flange Bushing	4
N	700-15-34	Brake Follower Bushing	2
P	25-86	Rivet	4
R	700-15-40	Pedal Rod Bracket	2
S	700-15-57	Pedal Rod Weldment	2
T	26-7	Roll Pin	4
W	716-1-275	Brake Pedal Pad	2
X	16-28	Nylock Nut	6
Y	700-15-39	Brake Cover	4
Z	700-15-32	Brake Cam	2
AA	26-14	Roll Pin	2
AB	700-90-10	Specification Label	1
AC	23-71	Hex Wash. Hd. Tap. Screw	8
AD	3-32	Hex Hd. Cap Screw	4
AE	721-31-65	Hole Plug	4
AF	37-35	Hole Plug	12
AG	946-1-60	Stryker Logo Label	2
AJ	921-1-252	Serial Number Label	1
AK	700-90-11	Brake/Steer Label	2
AL	11-310	Flat Washer	4
AM	52-281	Rubber Bumper	2
AN	4-24	Soc. Hd. Cap Screw	2
AP	700-32-38	Curved Washer	2
AR	700-1-42	Grounding Chain	1
AS	23-25	Hex Wash. Hd. Tap. Screw	1
AT	11-46	Washer	4

# 700-15-10 Brake Subassembly



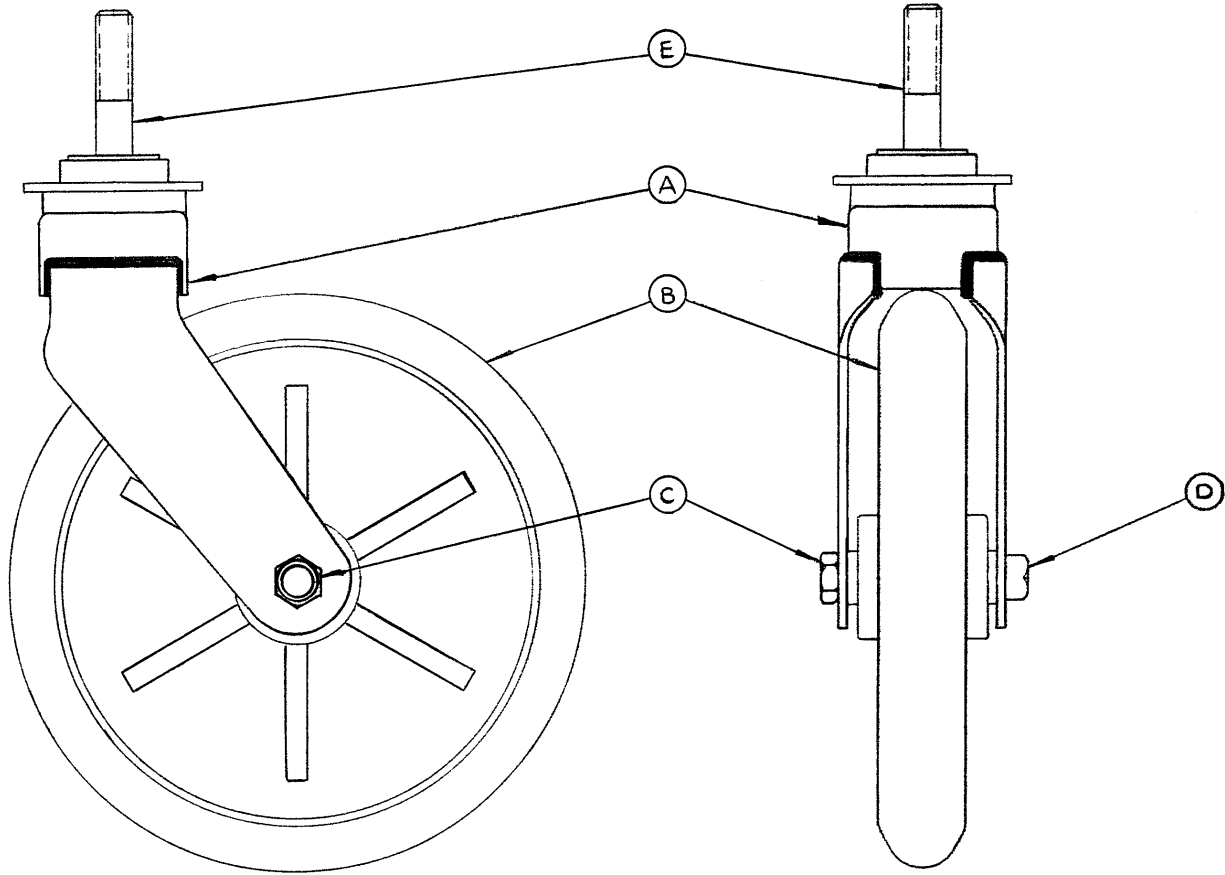
Item	Part No.	Part Name	Qty.
A	700-15-43	Follower Rod	1
B	26-11	Roll Pin	1
C	38-288	Compression Spring	1
D	700-15-29	Flange Bushing	1
E	700-15-38	Anti-Rotation Bracket	1
F	38-293	Compression Spring	1
G	700-15-50	Brake Ring Weldment	1

# 700-12-10 Caster Assembly



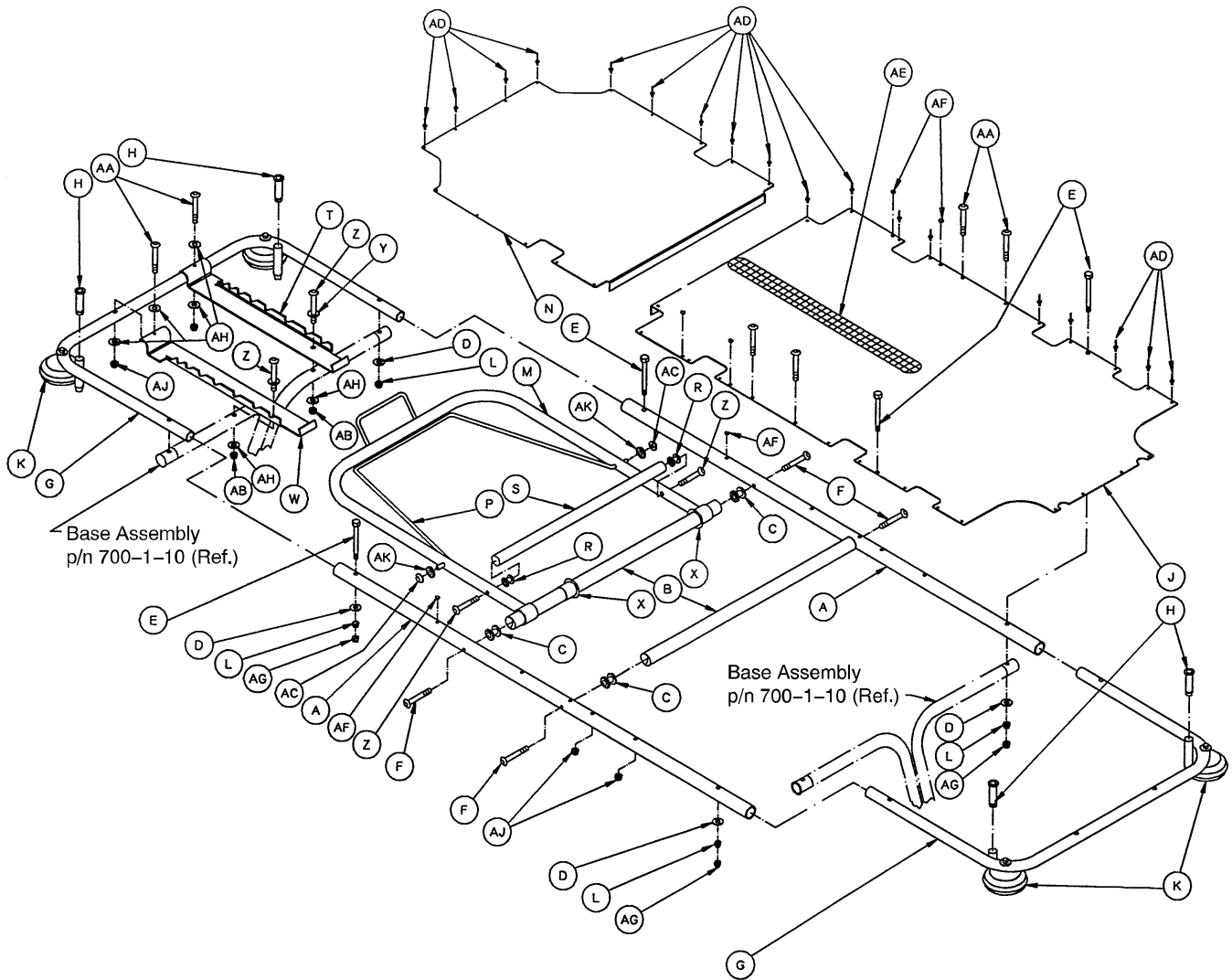
Item	Part No.	Part Name	Qty.
A	715-2-16	Caster Horn w/ Brg. Ass'y	1
B	715-2-25	Caster Wheel	1
C	16-60	Hex Nut	1
D	3-99	Hex Bolt	1
E	3-102	Hex Bolt	1

# 700-10-10 Steerlock Caster Assembly



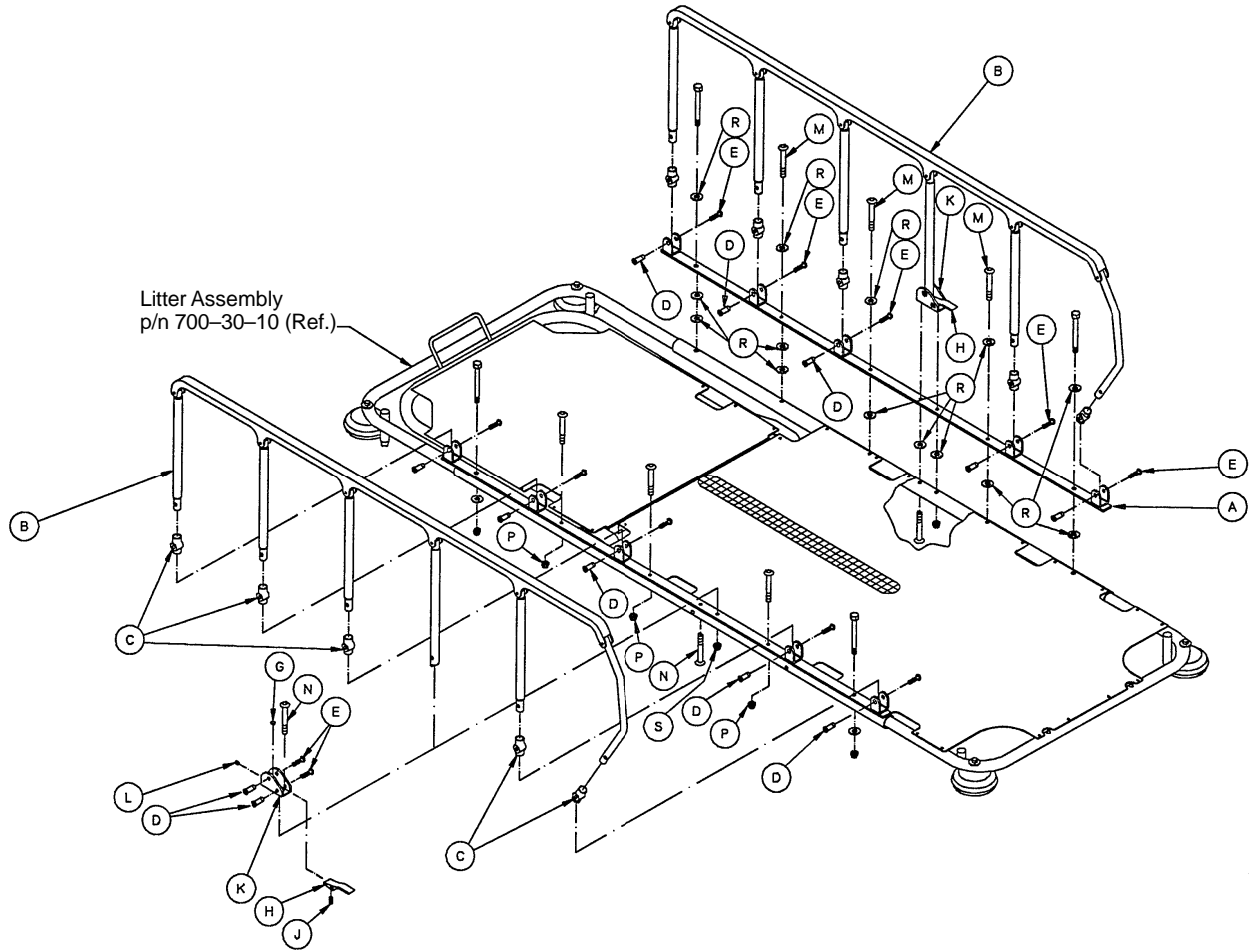
Item	Part No.	Part Name	Qty.
A	700-10-50	Steerlock Weldment	1
B	715-2-25	Caster Wheel	1
C	16-60	Hex Nut	1
D	3-99	Hex Bolt	1
E	3-102	Hex Bolt	1

# 700-30-10 Litter Assembly



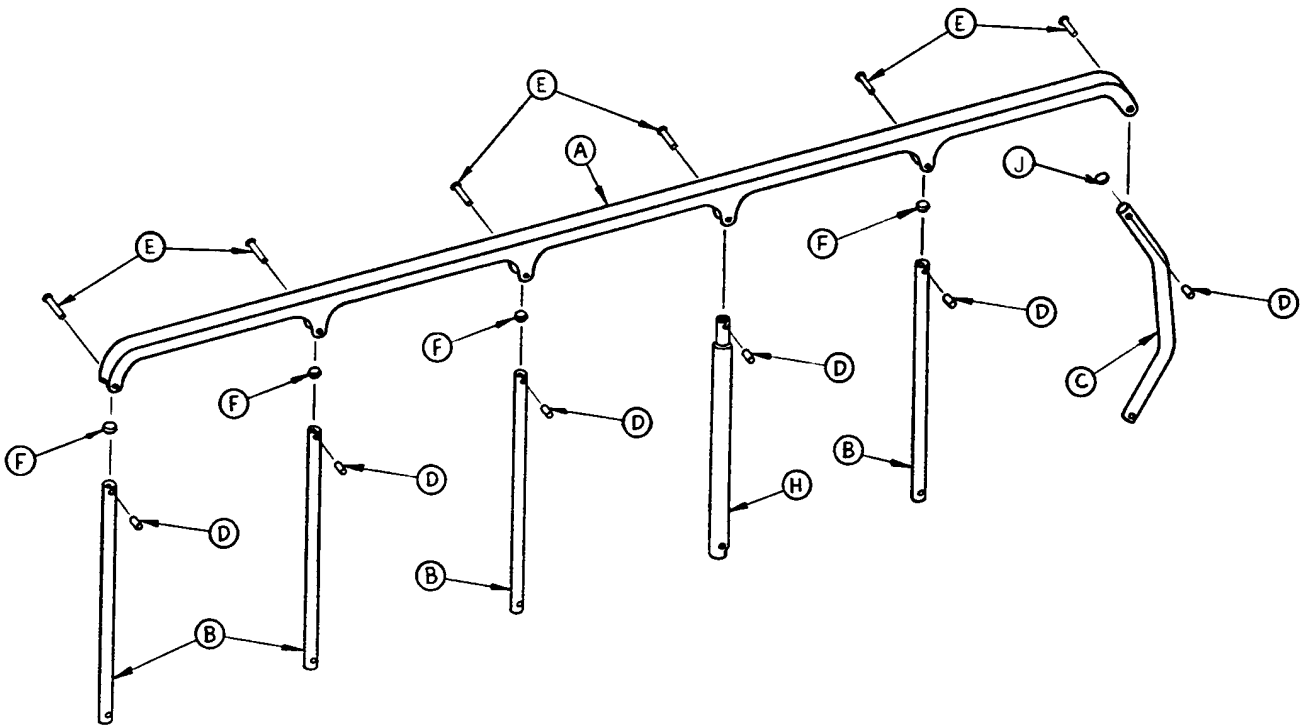
Item	Part No.	Part Name	Qty.	Item	Part No.	Part Name	Qty.
A	700-30-44	Litter Side Tube	2	T	700-32-42	LCT Bracket, Left	1
B	700-32-44	Litter Cross Brace	2	W	700-32-41	LCT Bracket, Right	1
C	18-24	Tube Connector	4	X	81-241	Flange Bushing	2
D	390-38-3	Formed Washer	4	Y	11-2	Flat Washer	2
E	3-11	Hex Hd. Cap Screw	4	Z	3-76	Hex Hd. Cap Screw	4
F	3-100	But. Hd. Cap Screw	4	AA	4-135	But. Hd. Cap Screw	6
G	700-30-50	U-Section Weldment	2	AB	16-28	Fiberlock Nut	2
H	393-3-68	Plastic Insert	4	AC	16-68	Push-On Cap	2
J	700-30-42	Foot End Skin	1	AD	25-79	Rivet	34
K	390-38	Bumper Assembly	1	AE	7900-1-102	Velcro Adhesive Pile	2'
L	16-36	Fiberlock Nut	4	AF	721-31-65	Hole Plug	6
M	700-232-50	Fowler Frame	1	AG	17-15	Acorn Nut	4
N	700-32-40	Fowler Skin	1	AH	700-32-38	Curved Washer	6
P	700-34-50	Fowler Supt. Weldment	1	AJ	17-4	Acorn Nut	6
R	18-6	Tube Connector	2	AK	52-17	Nylon Spacer	2
S	700-32-39	Fowler Cross Brace	1				

# 700-25-10 Folddown Siderail Assembly



Item	Part No.	Part Name	Qty.
A	700-25-50	Folddown Siderail Weldment	2
B	(page 15)	Siderail Assembly	2
C	721-26-69	Upright Sleeve	10
D	721-26-66	Pivot Screw	14
E	4-136	But. Hd. Cap Screw	14
G	37-74	Hole Plug	2
H	721-26-74	Lock Handle, Machined	2
J	38-220	Compression Spring	2
K	1010-26-80	Lock Housing Weldment	2
L	21-104	Set Screw	2
M	4-183	But. Hd. Cap Screw	6
N	3-103	But. Hd. Cap Screw	4
P	16-36	Fiberlock Nut	6
R	11-3	Flat Washer	28
S	17-4	Acorn Nut	2

# 1010-26-17 Siderail Assembly

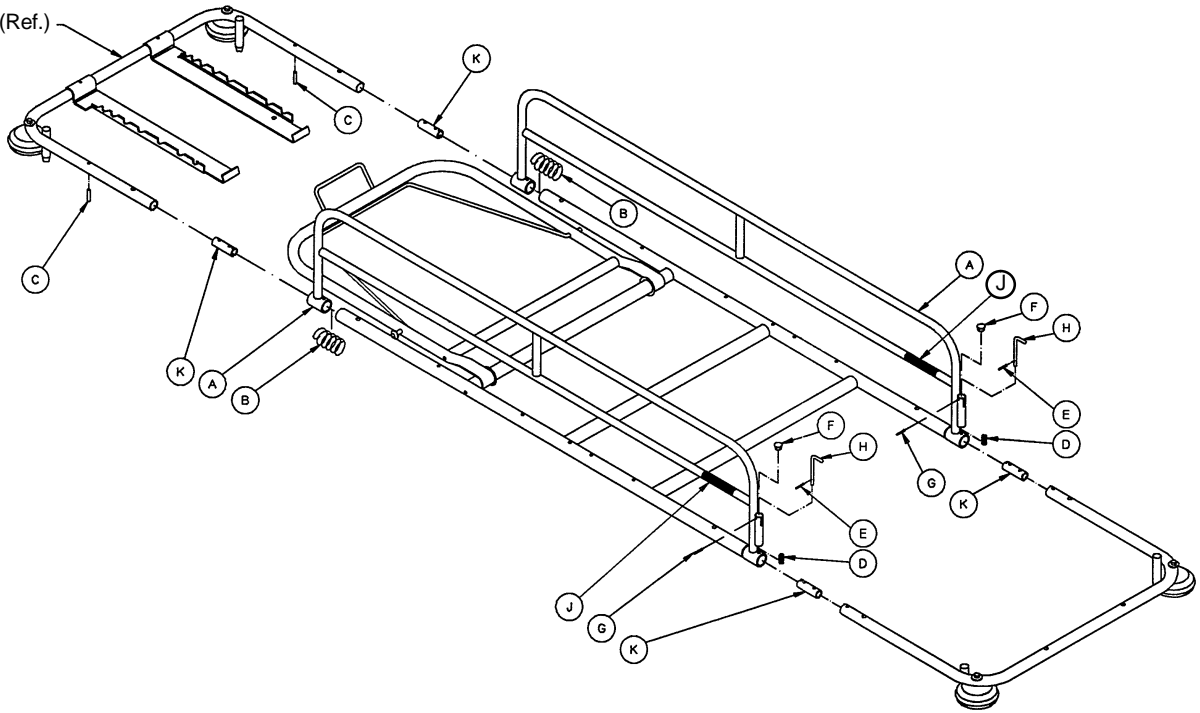


Item	Part No.	Part Name	Qty.
A	1010-26-15	Top Rail	1
B	1010-26-83	Upright	4
C	1010-26-84	Upright, Bent	1
D	1010-26-82	Sleeve Bearing	6
E	25-106	Semi-Tubular Rivet	6
F	1010-26-10	Round Hole Plug	4
H	1010-26-85	Upright, Latch	1
J	1010-26-12	Bent Spindle Rest	1



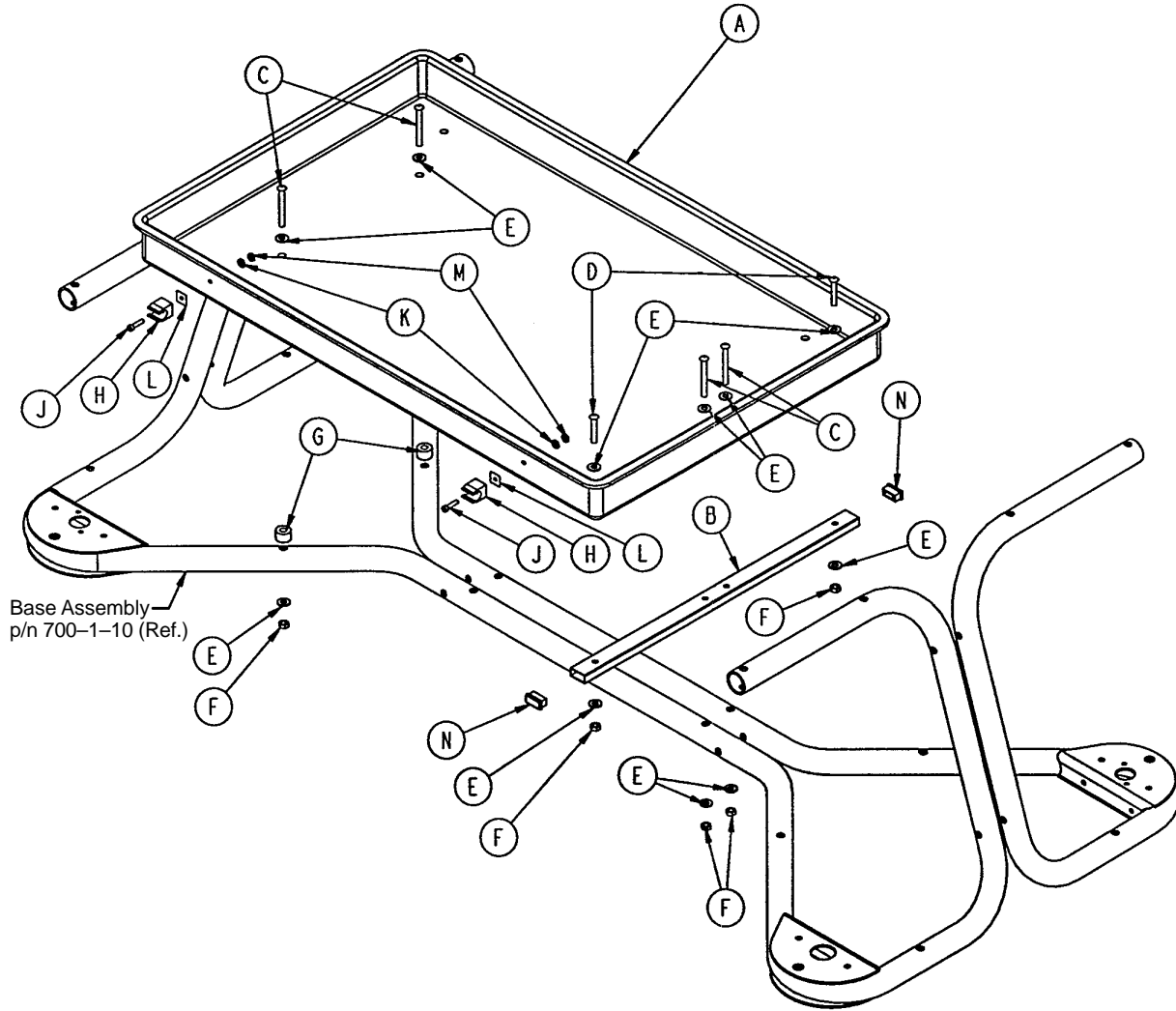
# 700-20-10 Swingdown Siderail Assembly

Litter Assembly  
p/n 700-30-10 (Ref.)



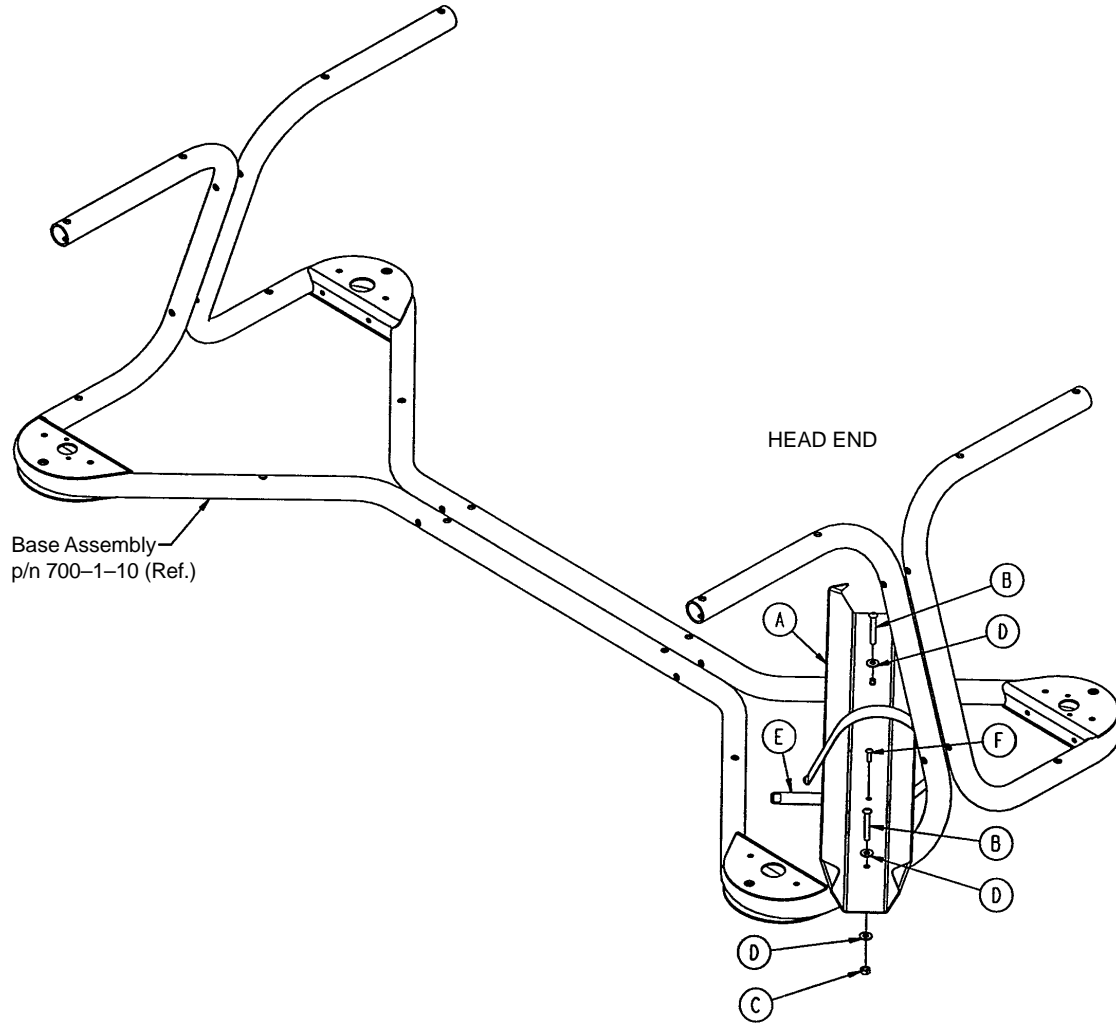
Item	Part No.	Part Name	Qty.
A	700-20-50	Swingdown Siderail Wldmt.	2
B	390-3-33	Compression Spring	2
C	26-14	Roll Pin	4
D	38-110	Compression Spring	2
E	26-216	Roll Pin	2
F	700-20-38	Lock Pin Guide Cap	2
G	26-6	Roll Pin	2
H	700-20-39	Siderail Lock Pin	2
J	700-20-35	Label, Release	2
K	700-20-36	Pin Support Sleeve	4

# 700-120-10 Storage Tray Assembly



Item	Part No.	Part Name	Qty.
A	700-120-45	Storage Tray	1
B	700-120-44	Storage Tray Supt. Tube	1
C	4-163	But. Hd. Cap Screw	4
D	4-135	But. Hd. Cap Screw	2
E	11-2	Flat Washer	12
F	16-28	Fiberlock Nut	6
G	470-2-4	Nylon Spacer	2
H	946-1-108	I.V. Clip	2
J	4-57	Soc. Hd. Cap Screw	2
K	11-16	Flat Washer	2
L	946-1-109	Adhesive Pad	2
M	16-14	Fiberlock Nut	2
N	1010-32-66	Hole Plug	2

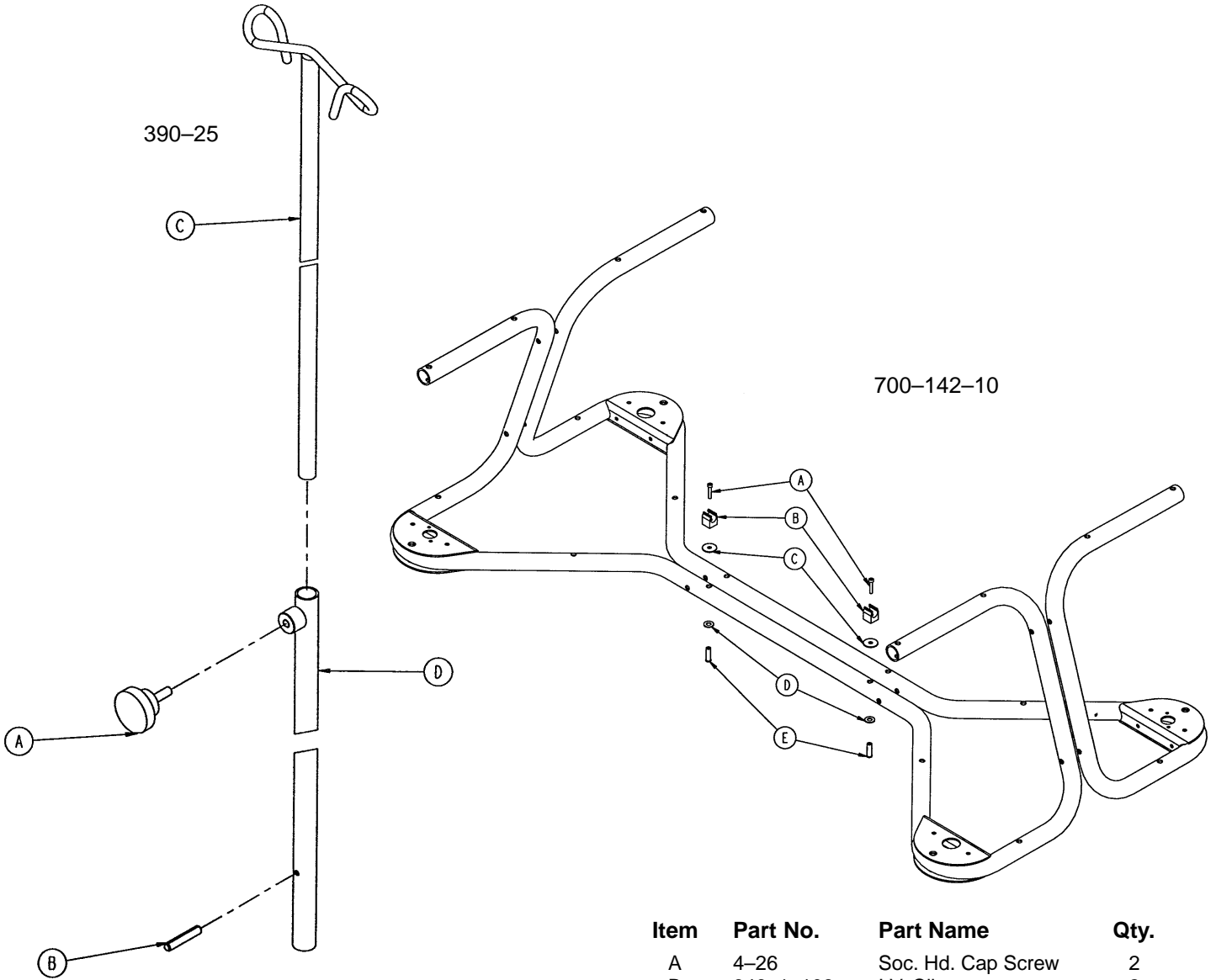
# 700-140-10 Oxygen Bottle Holder Assembly



Item	Part No.	Part Name	Qty.
A	700-140-45	Oxygen Bottle Holder	1
B	4-204	But. Hd. Cap Screw	2
C	16-28	Fiberlock Nut	2
D	11-2	Flat Washer	4
E	700-140-44	Bottle Holder Strap	1
F	4-57	But. Hd. Cap Screw	1
G	16-27	Fiberlock Nut	1
H	11-16	Flat Washer	1

# 390-25 I.V. Pole Assembly

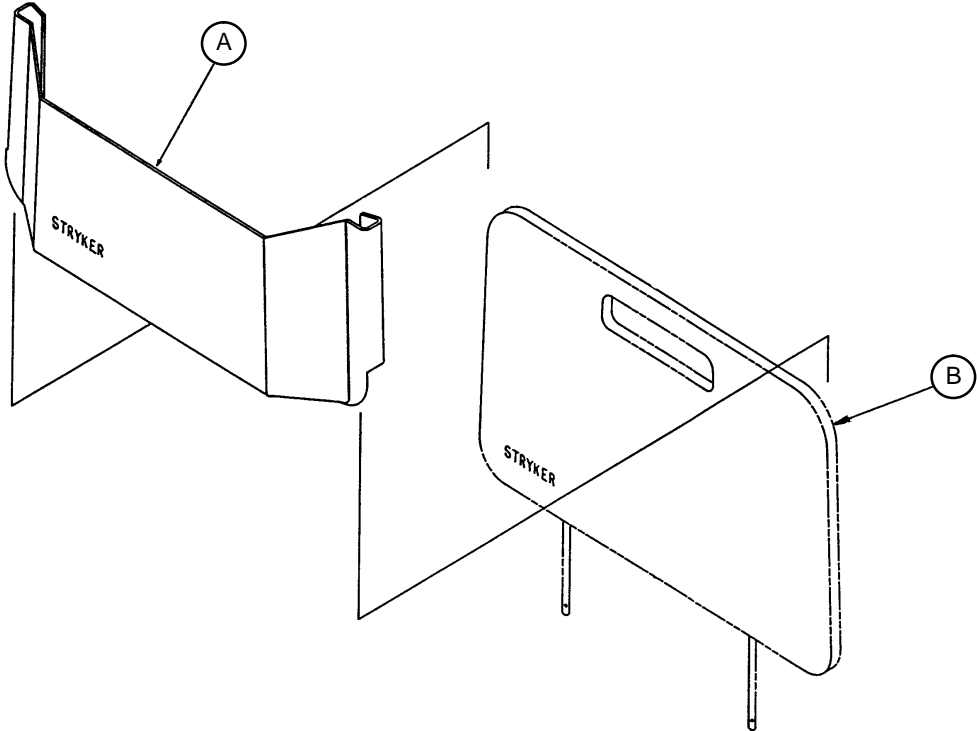
## 700-142-10 I.V. Holder Mounting Kit



Item	Part No.	Part Name	Qty.
A	24-23	Plastic Knob	1
B	26-199	Grooved Pin	1
C	390-3-53	Double I.V. Ass'y	1
D	393-3-43	Tube Assembly	1

Item	Part No.	Part Name	Qty.
A	4-26	Soc. Hd. Cap Screw	2
B	946-1-108	I.V. Clip	2
C	11-53	Flat Washer	2
D	11-3	Flat Washer	2
E	721-26-66	Pivot Screw	2

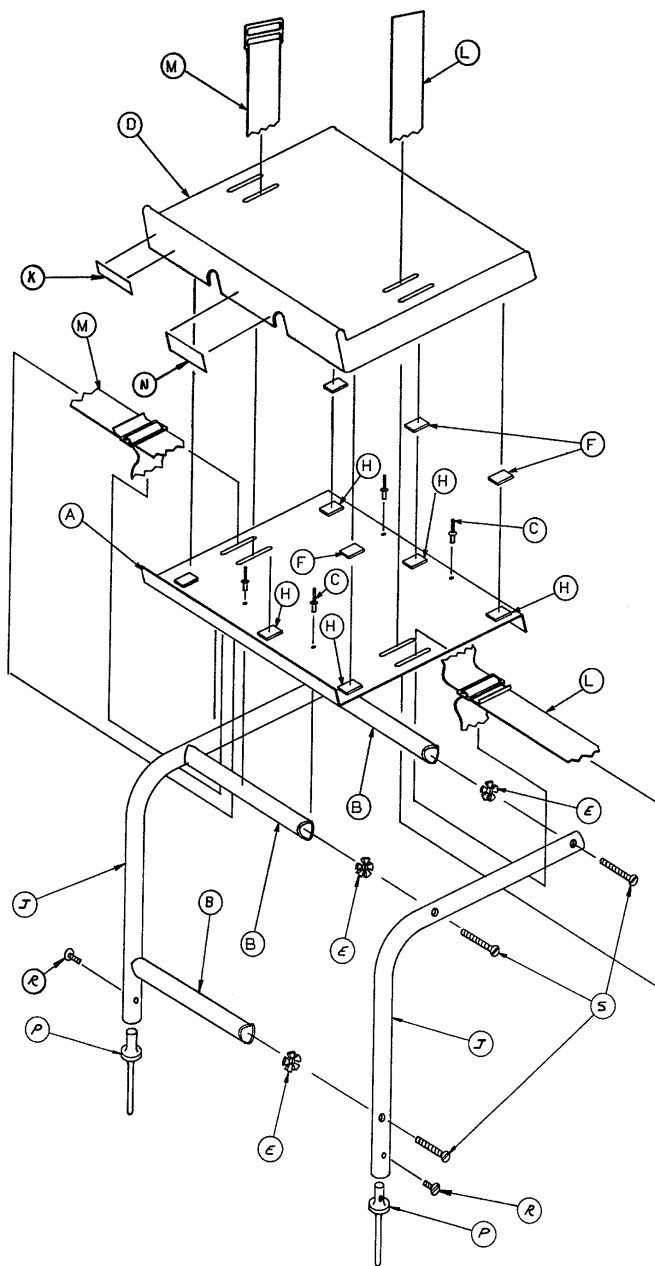
# 741-34 Foot Board/Chartholder Assembly



Item	Part No.	Part Name	Qty.
A	946-28-11	Chart Holder	1
B	741-29-18	Head/Foot Board	1

\* Replacement Part Number 741-34-100

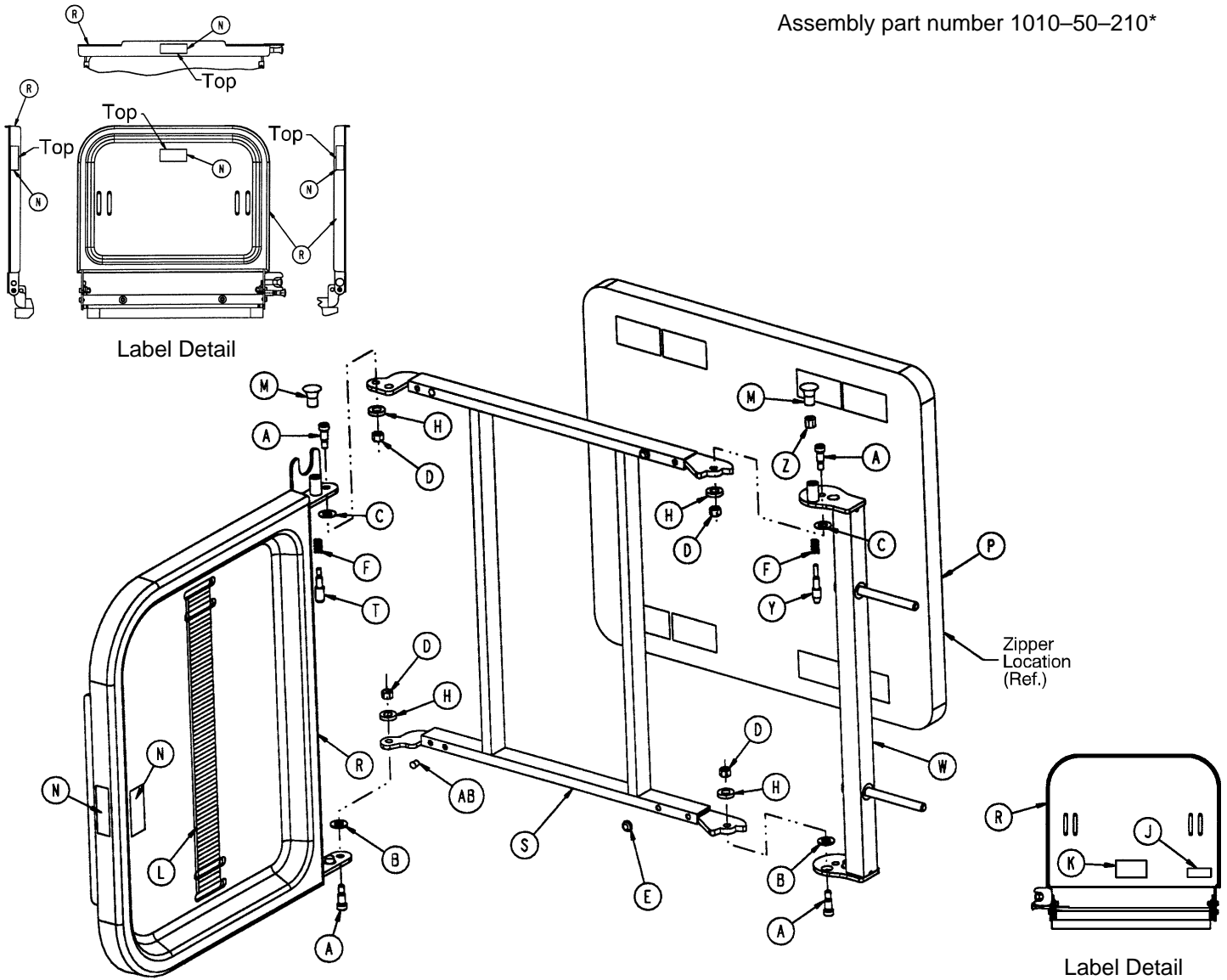
# 741-48-14 Defibrillator Tray Assembly



Item	Part No.	Part Name	Qty.	Item	Part No.	Part Name	Qty.
A	946-39-4	Tray	1	K	741-48-12	Label	1
B	926-39-16	Crosstube	3	L	390-57-12	Long Strap	1
C	25-55	Rivet	4	M	390-57-13	Short Strap	1
D	926-39-9	Cover	1	N	946-1-283	Label	1
E	18-6	Umbrella Nut	6	P	741-48-20	Holder	2
F	29-8	Dual Lock	6	R	2-44	Screw	2
H	29-10	Dual Lock	6	S	2-25	Screw	6
J	946-39-3	Support Tube	2				

# Foot Extension/Defibrillator Tray Assembly

Assembly part number 1010-50-210\*



Item	Part No.	Part Name	Qty.	Item	Part No.	Part Name	Qty.
A	8-49	Socket Hd. Shoulder Bolt	4	M	1010-50-50	Knob	2
B	14-20	Nylon Washer	2	N	1010-50-57	"Max. Weight" Label	4
C	14-21	Nylon Washer	2	P	1010-50-205	Cushion Assembly	1
D	16-28	Fiberlock Nut	4	R	1010-50-218	Foot & Tray Board	1
E	37-52	Rubber Bumper	2	S	1010-50-225	Pivot Frame Weldment	1
F	38-133	Spring	2	T	1010-50-242	Pin Lock	1
H	52-17	Spacer	4	W	1010-50-246	Base Mounting Ass'y	1
J	1010-50-17	Specification Label	1	Y	1010-50-248	Lower Pin Lock	1
K	1010-50-19	"Push/Pull" Label	1	Z	1010-50-250	Pin Adjuster	1
L	1010-50-21	Long Strap	1	AB	721-31-65	Hole Plug	2

\* Replacement part number 1010-50-100.

# Replacement Parts and Kits

---

<b><u>PART NAME</u></b>	<b><u>PART NUMBER</u></b>
Ankle Restraint Straps .....	946-43
Body Restraint Straps .....	390-19
Wrist Restraint Straps .....	946-44
SAFR™ Patient Transfer Board .....	701-41
Long SAFR™ Patient Transfer Board .....	700-130
Removable Standard I.V. Pole .....	390-25
Removable I.V. Pole Mounting Kit .....	700-142-10
Folddown Siderail Pads .....	946-96
2" Low Friction Mattress .....	1059-226-40
3" Enhanced Comfort Mattress .....	1001-48-6
3" Low Friction Mattress .....	1059-326-40
4" Enhanced Comfort Mattress .....	1001-47-6
4" Low Friction Mattress .....	1059-426-40
Defibrillator Tray .....	741-48
Foot Board Extension/Defibrillator Tray .....	1010-50-100
Head/Foot Board .....	741-29-100
Foot Board/Chartholder .....	741-34-100
Instrument/Serving Tray .....	1052-26
Storage Tray Kit .....	700-120-10



# Warranty

---

## Limited Warranty:

Stryker Medical Division, a division of Stryker Corporation, warrants to the original purchaser that its products should be free from defects in material and workmanship for a period of one (1) year after date of delivery. Stryker's obligation under this warranty is expressly limited to supplying replacement parts and labor for, or replacing, at its option, any product which is, in the sole discretion of Stryker, found to be defective. Stryker warrants to the original purchaser that the frame and welds on its beds will be free from structural defects for as long as the original purchaser owns the bed. If requested by Stryker, products or parts for which a warranty claim is made shall be returned prepaid to Stryker's factory. Any improper use or any alteration or repair by others in such manner as in Stryker's judgement affects the product materially and adversely shall void this warranty. No employee or representative of Stryker is authorized to change this warranty in any way.

Stryker Medical stretchers are designed for a 10 year expected life under normal use conditions and appropriate periodic maintenance as described in the maintenance manual for each device.

This statement constitutes Stryker's entire warranty with respect to the aforesaid equipment. STRYKER MAKES NO OTHER WARRANTY OR REPRESENTATION, EITHER EXPRESSED OR IMPLIED, EXCEPT AS SET FORTH HEREIN. THERE IS NO WARRANTY OF MERCHANTABILITY AND THERE ARE NO WARRANTIES OF FITNESS FOR ANY PARTICULAR PURPOSE. IN NO EVENT SHALL STRYKER BE LIABLE HEREUNDER FOR INCIDENTAL OR CONSEQUENTIAL DAMAGES ARISING FROM OR IN ANY MANNER RELATED TO SALES OR USE OF ANY SUCH EQUIPMENT.

## To Obtain Parts and Service:

Stryker products are supported by a nationwide network of dedicated Stryker Field Service Representatives. These representatives are factory trained, available locally, and carry a substantial spare parts inventory to minimize repair time. Simply call your local representative, or call Stryker Customer Service at (800) 327-0770.

## Supplemental Warranty Coverage:

Stryker has developed a comprehensive program of extended warranty options designed to keep your equipment operating at peak performance at the same time it eliminates unexpected costs. We recommend that these programs be activated *before* the expiration of the new product warranty to eliminate the potential of additional equipment upgrade charges. Stryker offers the following Supplemental Warranties:

### **Extended (Parts and Labor)**

- All replacement parts (excluding mattresses and consumable items)
- Labor and travel for *all* scheduled and unscheduled calls
- Biannual Preventive Maintenance Inspections and repairs
- JCAHO paperwork for preventive maintenance
- Priority Emergency Service

### **Standard (Labor Only):**

- Labor and travel for *all* scheduled and unscheduled calls
- Biannual Preventive Maintenance Inspections and repairs
- JCAHO paperwork for preventive maintenance
- Priority Emergency Service

### **Basic (Parts Only):**

- All replacement parts (excluding mattresses and consumable items)
- Priority Emergency Service

**Please call your local representative, or call (800) 327-0770 for further information**

# Warranty

---

## **Return Authorization:**

Merchandise cannot be returned without approval from the Stryker Customer Service Department. An authorization number will be provided which must be printed on the returned merchandise. Stryker reserves the right to charge shipping and restocking fees on returned items.

SPECIAL, MODIFIED, OR DISCONTINUED ITEMS NOT SUBJECT TO RETURN.

## **Damaged Merchandise:**

ICC Regulations require that claims for damaged merchandise must be made with the carrier within fifteen (15) days of receipt of merchandise. **DO NOT ACCEPT DAMAGED SHIPMENTS UNLESS SUCH DAMAGE IS NOTED ON THE DELIVERY RECEIPT AT THE TIME OF RECEIPT.** Upon prompt notification, Stryker will file a freight claim with the appropriate carrier for damages incurred. Claim will be limited in amount to the actual replacement cost. In the event that this information is not received by Stryker within the fifteen (15) day period following the delivery of the merchandise, or the damage was not noted on the delivery receipt at the time of receipt, the customer will be responsible for payment of the original invoice in full.

Claims for any short shipment must be made within thirty (30) days of invoice.



6300 Sprinkle Road, Kalamazoo, MI 49001-9799

(800) 327-0770

---

DH 3/97 700-90-1 REV H