
IMPORTANT
File in your
maintenance
records

stryker[®]
Medical

919 Transport Stretcher

OPERATIONS AND MAINTENANCE MANUAL

**For Parts or Technical Assistance:
1-800-327-0770**

Table Of Contents

Stretcher Operation	2
Preventative Maintenance Checklist	3
Cleaning	4
Assembly Drawings and Replacement Parts Lists	
Final Assembly	6, 7
Base Assembly	8, 9
Base Hood Assembly	10
Litter Frame Assembly	11
Litter Assembly	12, 13
Fowler Assembly	14
Siderail and Bumper Assembly, Left	15
Siderail and Bumper Assembly, Right	16
Left Siderail Assembly	17
Right Siderail Assembly	18
Removable I.V. Holder Assembly	19
Permanent Folding I.V. Holder Assembly	20
Warranty	
Obtaining Parts and Service	21
Supplemental Warranty Coverage	21
Return Authorization	22
Freight Damage Claims	22

Stretcher Operation



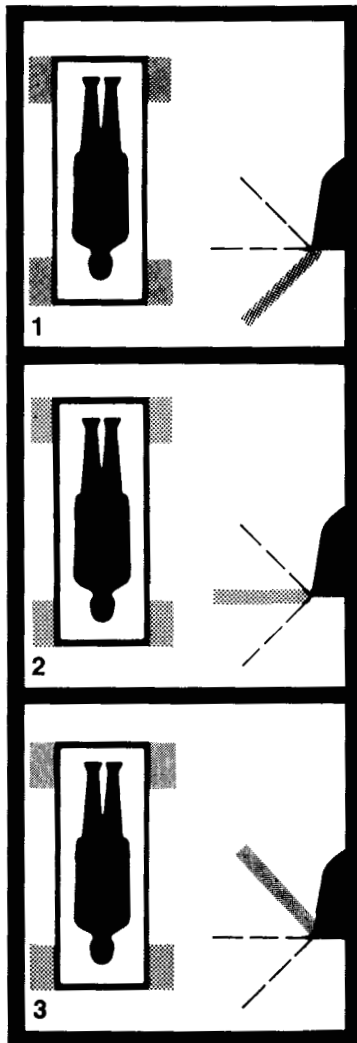
Trendelenburg Symbol

Trendelenburg

1. Press the latch with the Trendelenburg symbol on it and push down on the control end of the litter at the same time. Release the latch to secure when the desired position is reached.

2. Press the latch with the Trendelenburg symbol on it and pull up on the control end of the litter to raise it.

NOTE: The pressure it takes to raise or lower the litter will vary depending on the weight of the patient. If the patient is very heavy, you may not have to press on the litter to lower it. If the patient is very light, you may not have to pull on the litter to raise it.



Foot Pedal

Foot Pedal

1. Push the pedal DOWN to engage the four wheel brakes.

2. Place the pedal in the MIDDLE position to free all four wheels. This enables the stretcher to be pushed sideways.

3. Lift the pedal to the full UP position to engage the directional wheel lock. This allows steering from the control end of the stretcher.

Manual Fowler

1. Raise the Fowler to the desired height (0 to 90°) by grasping the handles on the Fowler and lifting.

2. Lower the Fowler by grasping the handles and releasing the Fowler stand from the bracket on the litter.

WARNING: DO NOT lower the Fowler by reaching under it.

Folddown Siderail

1. Raise the siderails to their full height by pulling them up.

2. Lift the latch under the siderails to push the siderails down.

Service Information

PREVENTATIVE MAINTENANCE CHECKLIST

- Tighten all fasteners regularly.
- Check roll pins for proper positioning.
- Check collars or sleeves for proper positioning. Tighten, if necessary.
- Check lubrication of cranks, pivots, and casters.
- Check brake rack gear bearing for wear. Replace, if necessary.

Serial No. _____

Completed By: _____

Date: _____

Service Information

Hand wash all surfaces of the stretcher with warm water and mild detergent. Dry thoroughly. **DO NOT STEAM CLEAN, PRESSURE WASH, HOSE OFF OR ULTRASONICALLY CLEAN.** Using these methods of cleaning is **not** recommended and may void this product's warranty.

Clean Velcro **AFTER EACH USE**. Saturate Velcro with disinfectant and allow disinfectant to evaporate. (Appropriate disinfectant for nylon Velcro should be determined by the hospital.)

In general, when used in those concentrations recommended by the manufacturer, either phenolic type or quaternary type disinfectants can be used. Iodophor type disinfectants are not recommended for use because staining may result. The following products have been tested and have been found not to have a harmful effect on fabrics WHEN USED IN ACCORDANCE WITH MANUFACTURERS RECOMMENDED DILUTION.*

TRADE NAME	DISINFECTANT TYPE	MANUFACTURER	*MANUFACTURER'S RECOMMENDED DILUTION
A33	Quaternary	Airwick (Professional Products Division)	2 ounces/gallon
A33 (dry)	Quaternary	Airwick (Professional Products Division)	1/2 ounce/gallon
Beaucoup	Phenolic	Huntington Laboratories	1 ounce/gallon
Blue Chip	Quaternary	S.C. Johnson	2 ounces/gallon
Elimstaph	Quaternary	Walter G. Legge	1 ounce/gallon
Franklin Phenomysan F2500	Phenolic	Purex Corporation	1 1/4 ounce/gallon
Franklin Sentinel	Quaternary	Purex Corporation	2 ounces/gallon
Galahad	Phenolic	Puritan Churchill Chemical Company	1 ounce/gallon
Hi-Tor	Quaternary	Huntington Laboratories	1/2 ounce/gallon
LPH	Phenolic	Vestal Laboratories	1/2 ounce/gallon
Matar	Phenolic	Huntington Laboratories	1/2 ounce/gallon
Omega	Quaternary	Airwick (Professional Products Division)	1/2 ounce/gallon
Quanto	Quaternary	Huntington Laboratories	1 ounce/gallon
Sanikleen	Quaternary	West Chemical Products	2 ounces/ gallon
Sanimaster II	Quaternary	Service Master	1 ounce/gallon
Vesphene	Phenolic	Vestal Laboratories	1 1/4 ounce/ gallon

Quaternary Germicidal Disinfectants, used as directed, and/or Chlorine Bleach products, typically 5.25% Sodium Hypochlorite in **dilutions ranging between 1 part bleach to 100 parts water, and 2 parts bleach to 100 parts water are not considered mild detergents. These products are corrosive in nature and may cause damage to your stretcher if used improperly.** If these types of products are used to clean Stryker patient handling equipment, measures must be taken to insure the stretchers are rinsed with clean water and thoroughly dried following cleaning. Failure to properly rinse and dry the stretchers will leave a corrosive residue on the surface of the stretcher, possibly causing premature corrosion of critical components.

NOTE

Failure to follow the above directions when using these types of cleaners may void this product's warranty.

REMOVAL OF IODINE COMPOUNDS

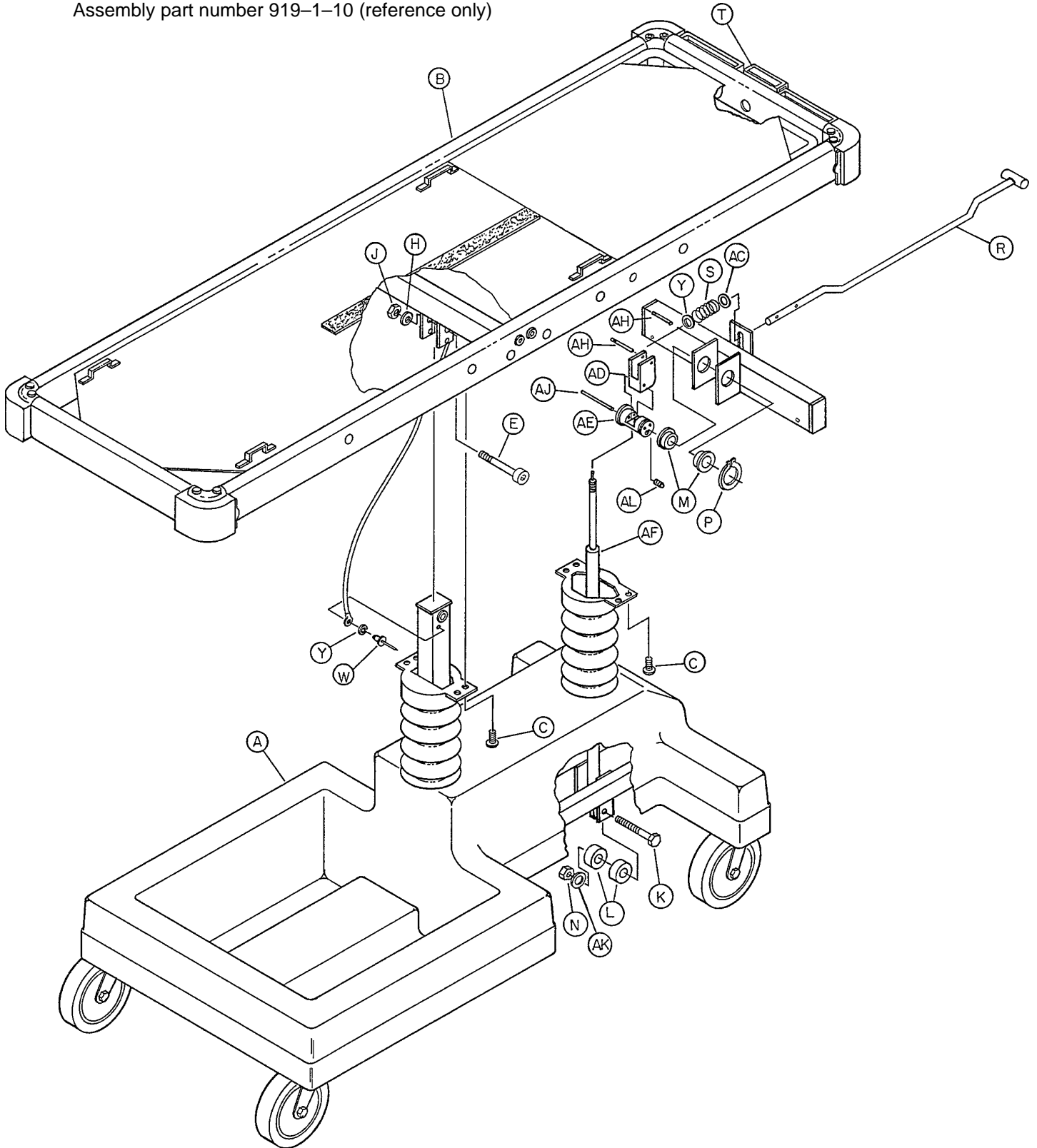
This solution may be used to remove iodine stains from mattress cover and foam footrest pad surfaces.

1. Use a solution of 1–2 tablespoons Sodium Thiosulfate in a pint of warm water to clean the stained area. Clean as soon as possible after staining occurs. If stains are not immediately removed, allow solution to soak or stand on the surface.
2. Rinse surfaces which have been exposed to the solution in clear water before returning bed to service.

Notes

Final Assembly

Assembly part number 919-1-10 (reference only)



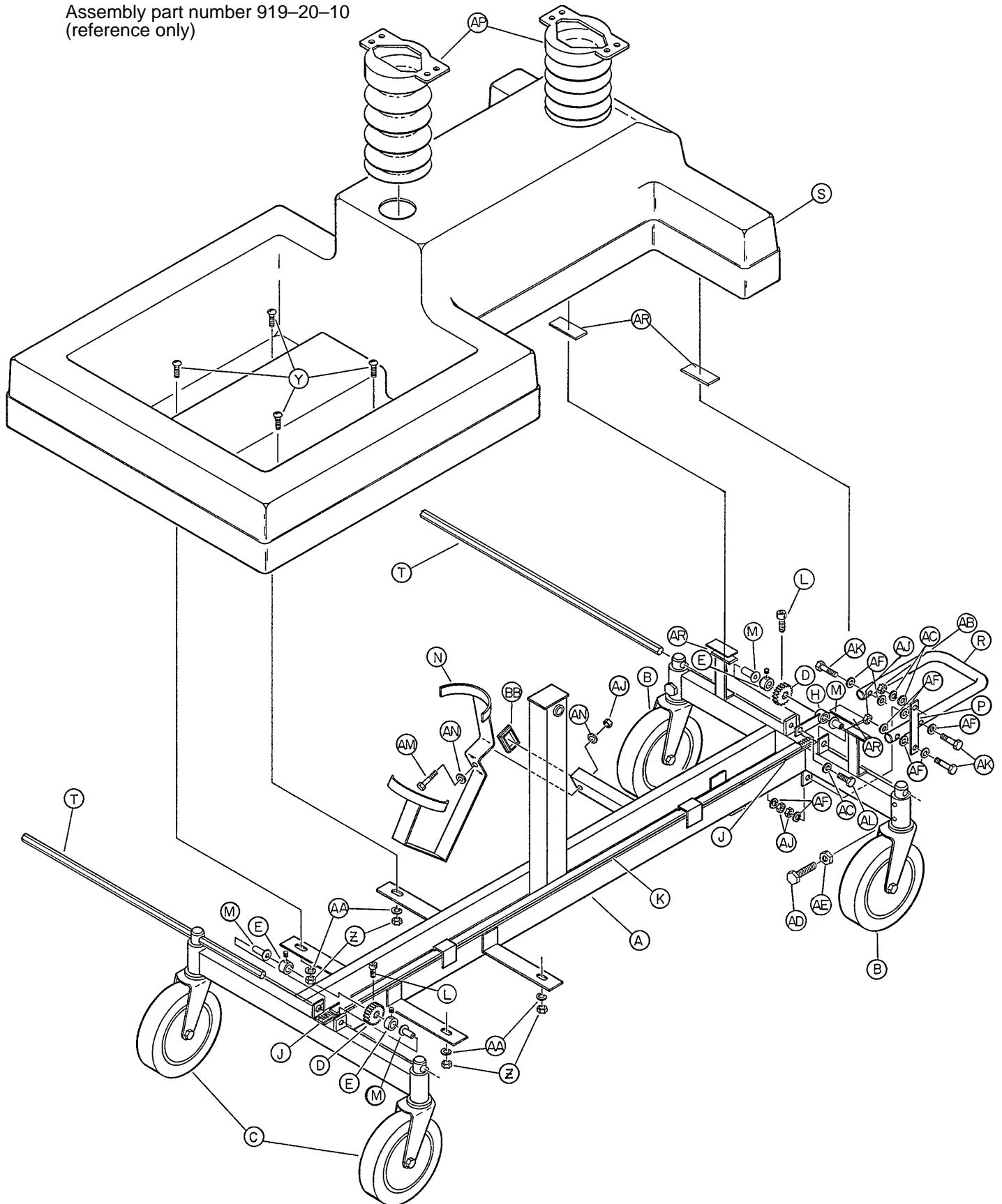
Final Assembly

Item	Part No.	Part Name	Qty.
A	(page 8 & 9)	Base Assembly	1
B	(page 12 & 13)	Litter Assembly	1
C	23-25	Self-Tapping Screw	4
E	8-34	Shoulder Bolt	1
H	11-13	Flat Washer	2
J	16-12	Flex Lock Nut	1
K	3-31	Hex Hd. Cap Screw	1
L	52-16	Spacer	2
M	946-35-25	Liner	2
N	16-12	Flexlock Nut	1
P	28-76	Retention Ring	1
R	919-1-67	Cylinder Cam Rod Ass'y	1
S	38-162	Compression Spring	1
T	919-1-62	Head Down Label	1
W	25-69	Pop Rivet	1
Y	11-64	Flat Washer	2
AC	11-2	Flat Washer	1
AD	919-1-70	Cam	1
AE	946-35-24	Yoke	1
AF	1010-31-77	Gas Cylinder	1
AH	26-63	Groove Pin	2
AJ	26-137	Groove Pin	1
AK	12-7	Lock Washer	1
AL	21-119	Set Screw	1

Litter Attachment Retrofit Kit p/n 919-20-130. (For upgrading loose litter tops).

Base Assembly

Assembly part number 919-20-10
(reference only)

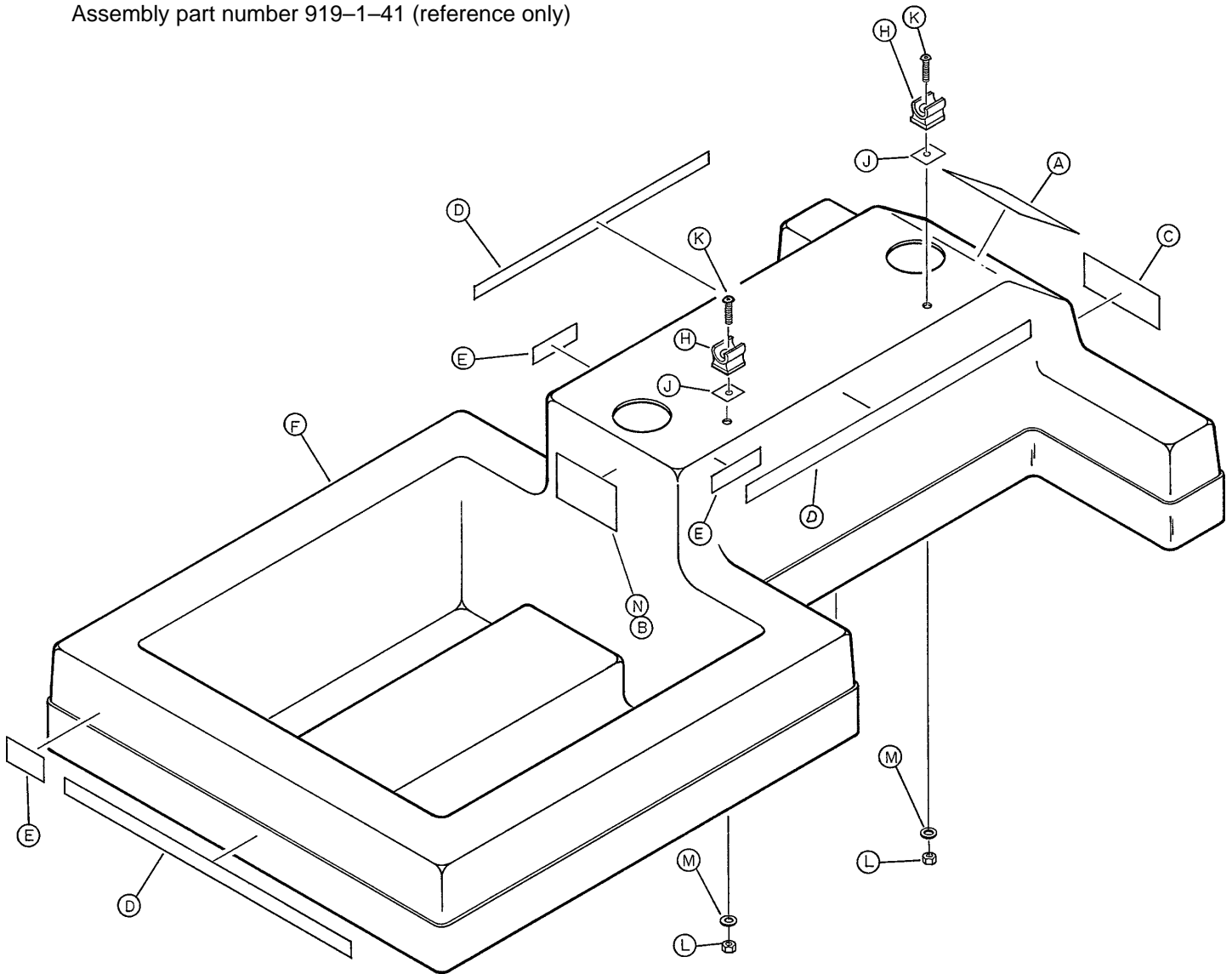


Base Assembly

Item	Part No.	Part Name	Qty.
A	919-20-16	Base Weldment	1
B	919-1-156	Caster (Non-Steering)	2
C	919-1-155	Caster (Steering)	2
D	919-30-31	Spur Gear	2
E	42-1	Collar	3
H	988-1-236	Connecting Lever	1
J	919-30-28	Rack Bearing	2
K	919-30-25	Rack Assembly	1
L	4-32	Soc. Hd. Cap Screw	2
M	946-1-117	Brake Rod Bushing	4
N	390-6-1	Oxygen Bottle Holder	1
P	919-30-30	Brake Actuator	1
R	919-30-20	Brake Pedal	1
S	(page 10)	Base Hood Assembly	1
T	919-30-22	Brake Arm	2
Y	7-17	Ph. Truss Hd. Mach. Screw	4
Z	15-22	Hex Nut	4
AA	12-20	Split Ring Lock Washer	4
AB	16-11	Hex Nut	1
AC	14-3	Flat Washer	3
AD	3-12	Hex Hd. Cap Screw	4
AE	15-13	Hex Jam Nut	4
AF	14-2	Nylon Flat Washer	9
AJ	16-16	Hex Nut	4
AK	3-5	Hex Hd. Cap Screw	3
AL	4-51	Soc. Hd. Cap Screw	1
AM	3-17	Hex Hd. Cap Screw	1
AN	11-2	Flat Washer	2
AP	919-1-48	Bellows	2
AR	29-11	Dual Lock	4
BB	37-34	Hole Plug	1

Base Hood Assembly

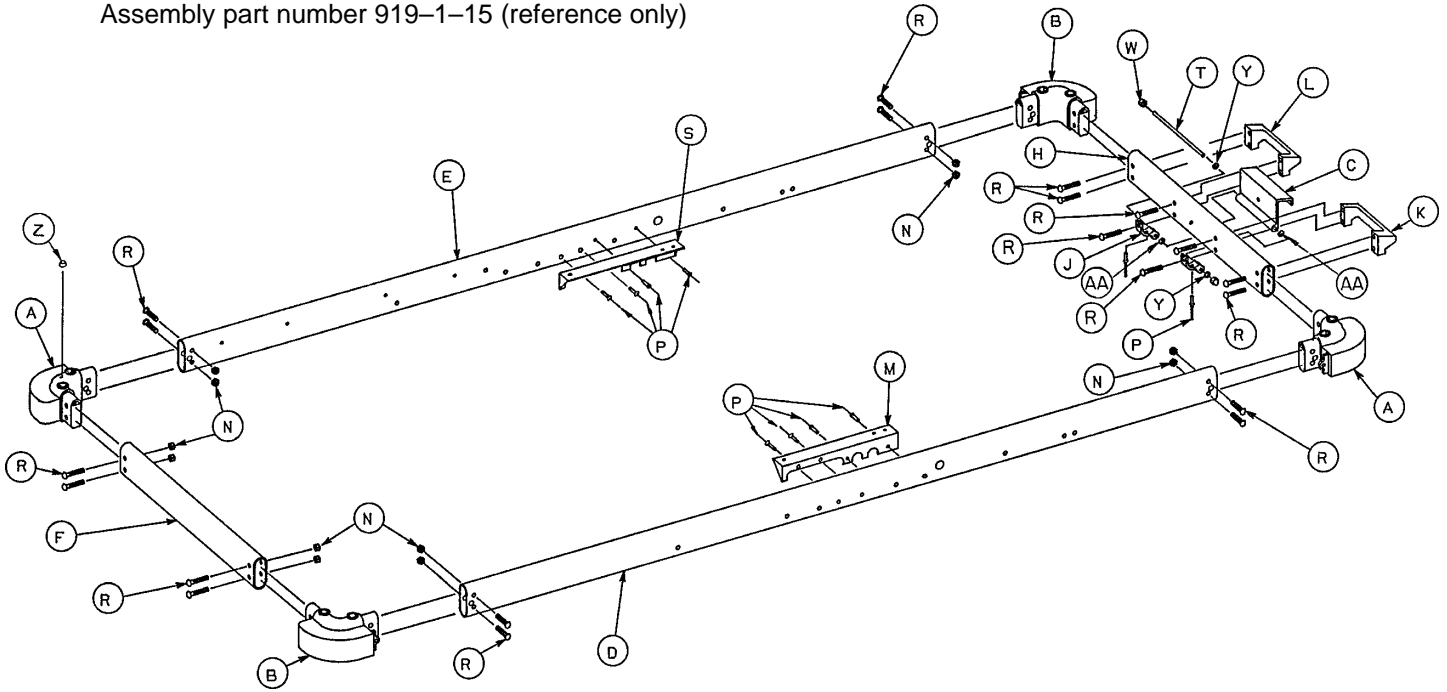
Assembly part number 919-1-41 (reference only)



Item	Part No.	Part Name	Qty.
A	919-1-60	Stretcher Logo Label	1
B	919-1-61	Specification Label	1
C	919-1-63	Brake Operation Label	1
D	919-1-64	Stripe	3
E	946-1-60	Stryker Logo Label	3
F	919-1-40	Hood	1
H	919-1-108	I.V. Clip	2
J	946-1-109	Adhesive Pad	2
K	4-57	Hex Soc. But. Hd. Cap Screw	2
L	16-27	Kep Nut	2
M	11-16	Flat Washer	2
N	921-1-252	Serial Number Label	1

Litter Frame Assembly

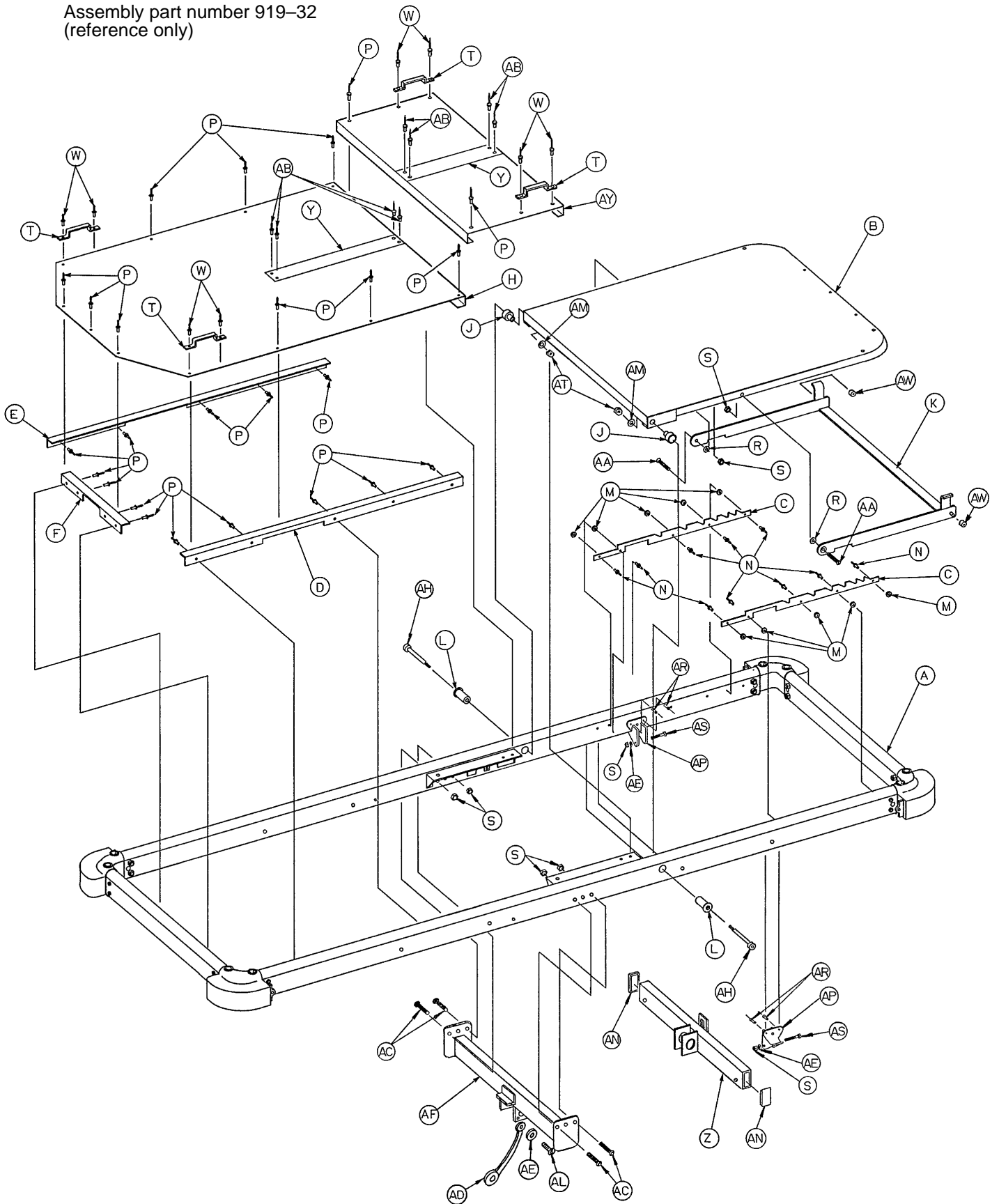
Assembly part number 919-1-15 (reference only)



Item	Part No.	Part Name	Qty.
A	946-1-37	Corner, Head End, Left	2
B	946-1-38	Corner, Head End, Right	2
C	919-1-29	Release Lever	1
D	919-1-43	Side Tube, Left	1
E	919-1-42	Side Tube, Right	1
F	926-1-26	Cross Tube	1
H	919-1-23	Head End Cross Tube	1
J	919-1-30	Handle Pivot	2
K	919-1-27	Left Handle	1
L	919-1-28	Right Handle	1
M	919-1-19	Support Angle, Left	1
N	16-36	Fiberlock Nut	12
P	25-50	Pop Rivet	10
R	4-54	Hex But. Hd. Cap Screw	20
S	919-1-20	Support Angle, Right	1
T	919-1-37	Threaded Shaft	1
W	17-4	Acorn Nut	2
Y	14-2	Nylon Washer	2
Z	30-21	Rubber Cap	4
AA	14-4	Nylon Washer	2
AB	919-1-44	Rubber Bumper	1
AC	919-1-45	Adhesive Pad	1

Litter Assembly

Assembly part number 919-32
(reference only)



Litter Assembly

Item	Part No.	Part Name	Qty.
A	(page 11)	Litter Frame Assembly	1
B	(page 14)	Fowler Assembly	1
C	919-32-12	Fowler Bracket	2
D	946-34-41	Skin Support Angle, Left	1
E	946-34-42	Skin Support Angle, Right	1
F	946-34-40	Skin Support Angle, End	1
H	926-34-31	Footsection Skin	1
J	966-34-40	Pivot Sleeve	2
K	919-32-18	Bracket Assembly	1
L	966-34-41	Pivot	2
M	11-134	Spacer	10
N	25-69	Pop Rivet	10
P	25-55	Pop Rivet	25
R	14-19	Nylon Washer	2
S	16-11	Hex Castle Nut	8
T	393-53-20	Strap Anchor	4
W	25-77	Pop Rivet	8
Y	7900-1-102	Velcro Pile Tape	A/R
Z	919-20-65	Head End Support Ass'y	1
AA	1-49	Flat Hd. Mach. Screw	2
AB	25-40	Pop Rivet	8
AC	4-54	Hex But. Hd. Cap Screw	4
AD	460-2-32	Grounding Cable	1
AE	11-2	Flat Washer	3
AF	919-20-57	Midsection Support Ass'y	1
AH	8-31	Shoulder Bolt	2
AL	2-44	Round Hd. Mach. Screw	1
AM	11-108	Flat Washer	2
AN	37-34	Hole Plug	2
AP	946-1-31	Head End Litter Support	2
AR	25-50	Pop Rivet	4
AS	3-40	Hex Hd. Cap Screw	2
AT	16-36	Nylock Nut	2
AW	926-32-20	Scratch Protector	2
AY	926-33-39	Midsection Skin	1

2" Mattress p/n 1059-224-140

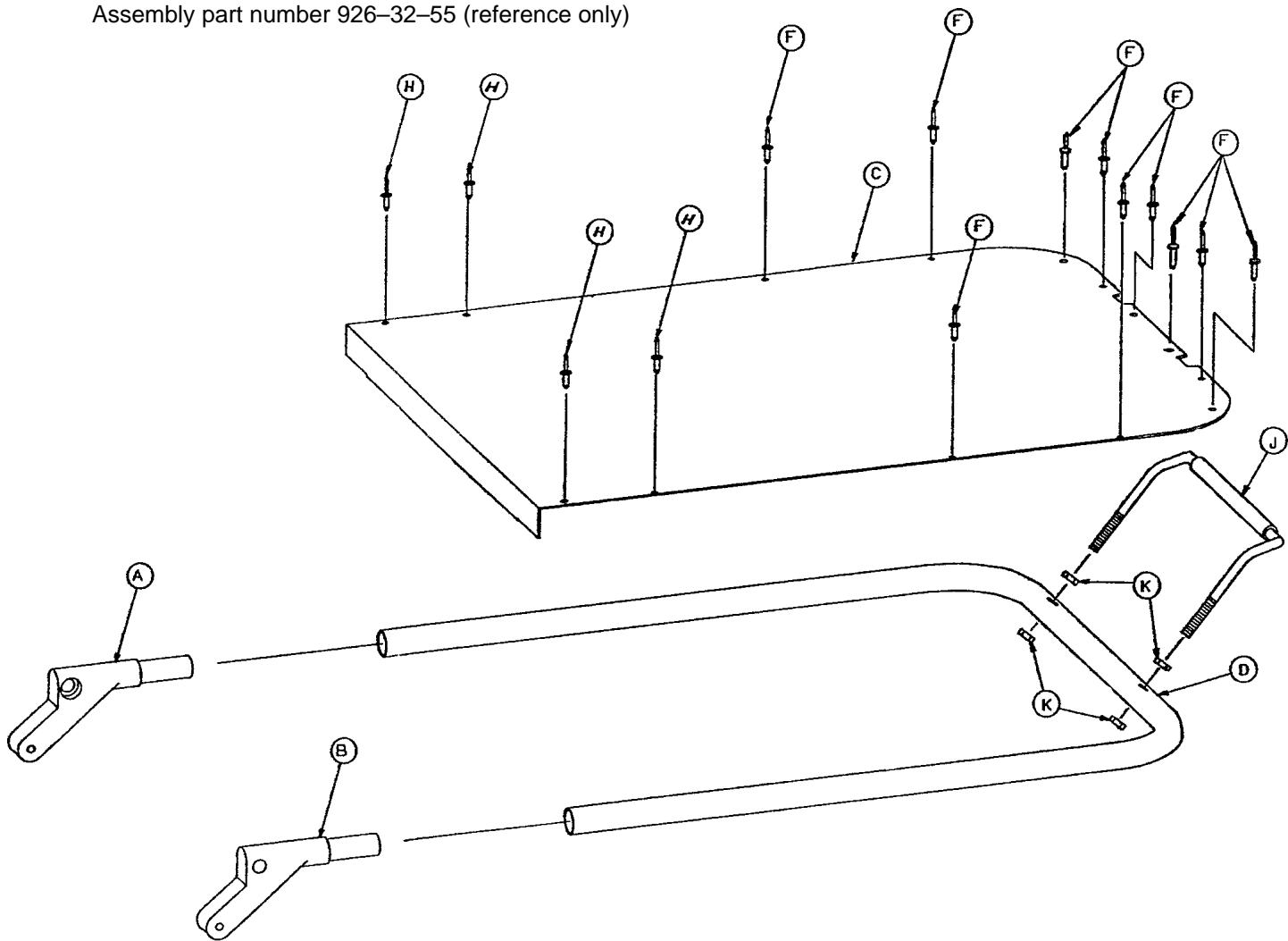
3" Mattress p/n 1059-324-140

4" Mattress p/n 1059-424-140

Foot Skin Retrofit Kit p/n 919-34-35. (To change 1 piece foot skin to 2 piece).

Fowler Assembly

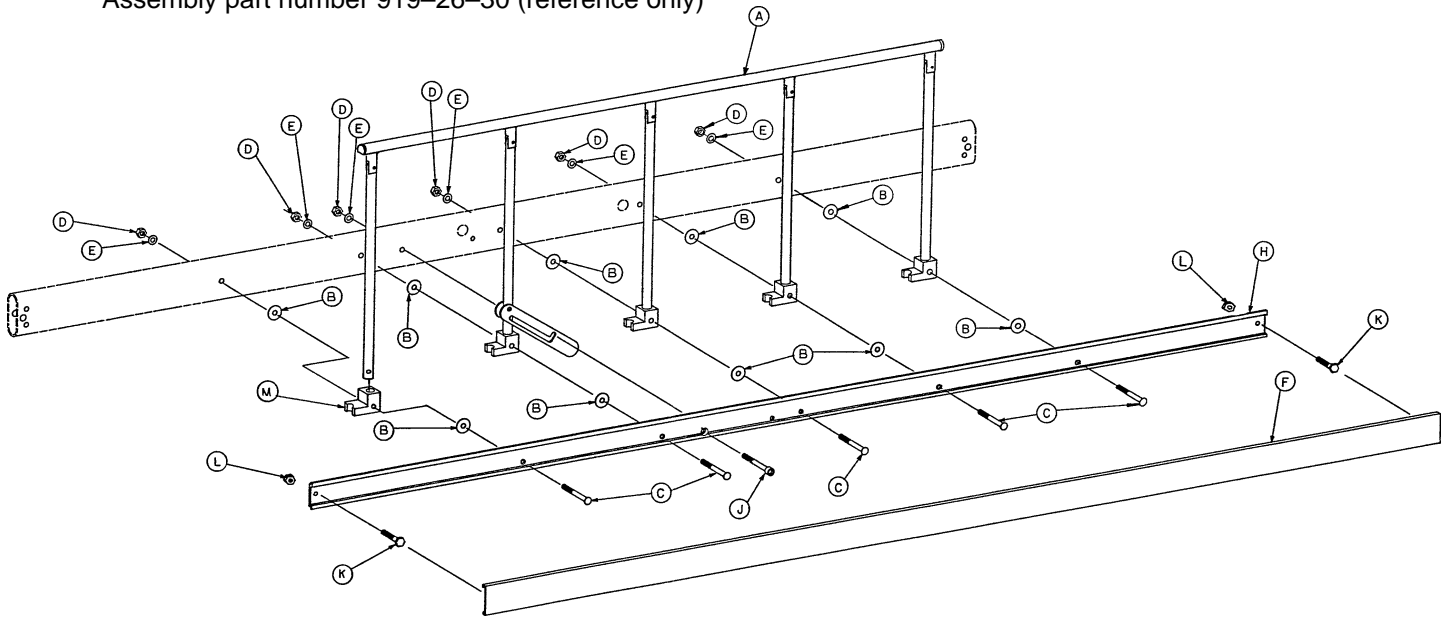
Assembly part number 926-32-55 (reference only)



Item	Part No.	Part Name	Qty.
A	926-32-28	Fowler Plug, Right	1
B	926-32-27	Fowler Plug, Left	1
C	926-33-38	Fowler Skin, Alum.	1
D	926-33-57	Fowler Tube	1
F	25-55	Pop Rivet	10
H	25-77	Pop Rivet	4
J	460-4-39	Handle	1
K	15-12	Jam Nut	4

Siderail and Bumper Assembly, Left

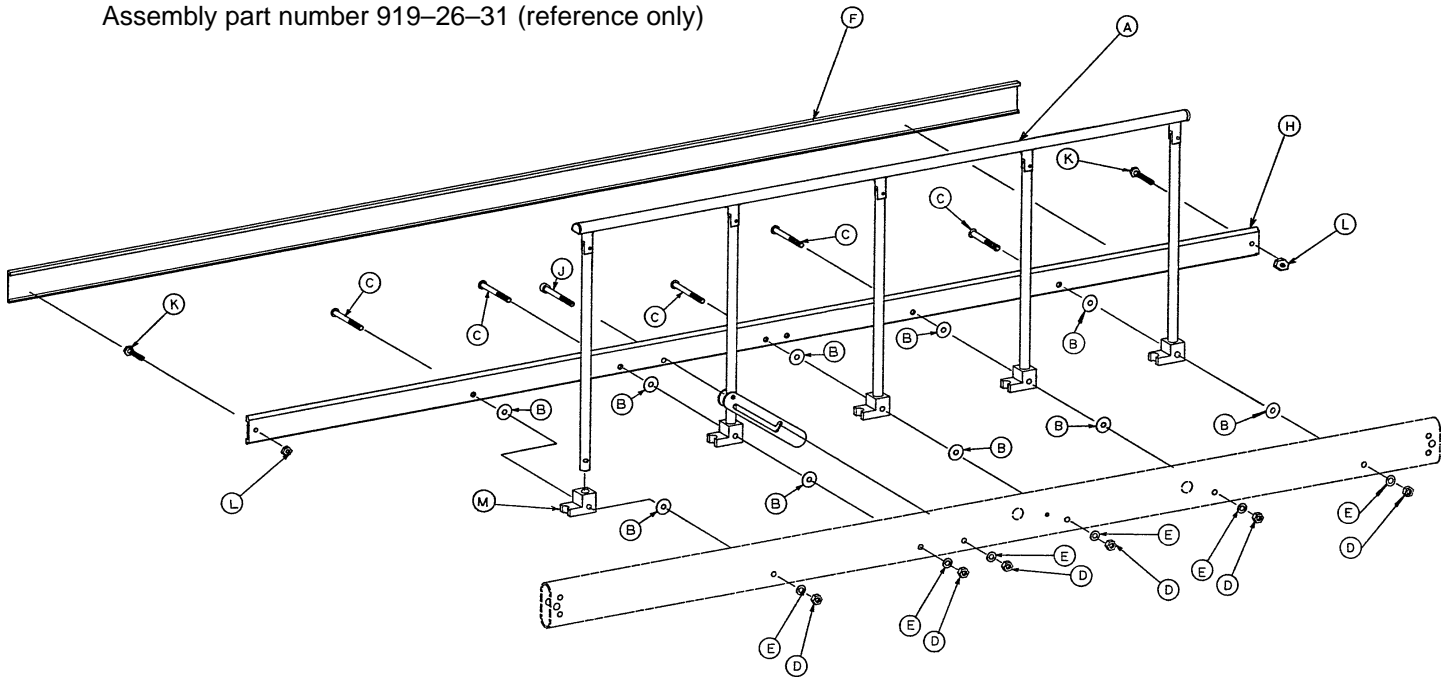
Assembly part number 919-26-30 (reference only)



Item	Part No.	Part Name	Qty.
A	(page 17)	Siderail Assembly, Left	1
B	14-19	Washer	15
C	4-53	But. Hd. Cap Screw	5
D	16-11	Flexlock Nut	6
E	14-17	Washer	6
F	946-1-41	Cap	1
H	919-1-72	Bumper, Left	1
J	4-56	Soc. Hd. Cap Screw	1
K	3-2	Hex Hd. Cap Screw	2
L	16-16	Fiberlock Nut	2
M	946-26-12	Siderail Pivot	5

Siderail and Bumper Assembly, Right

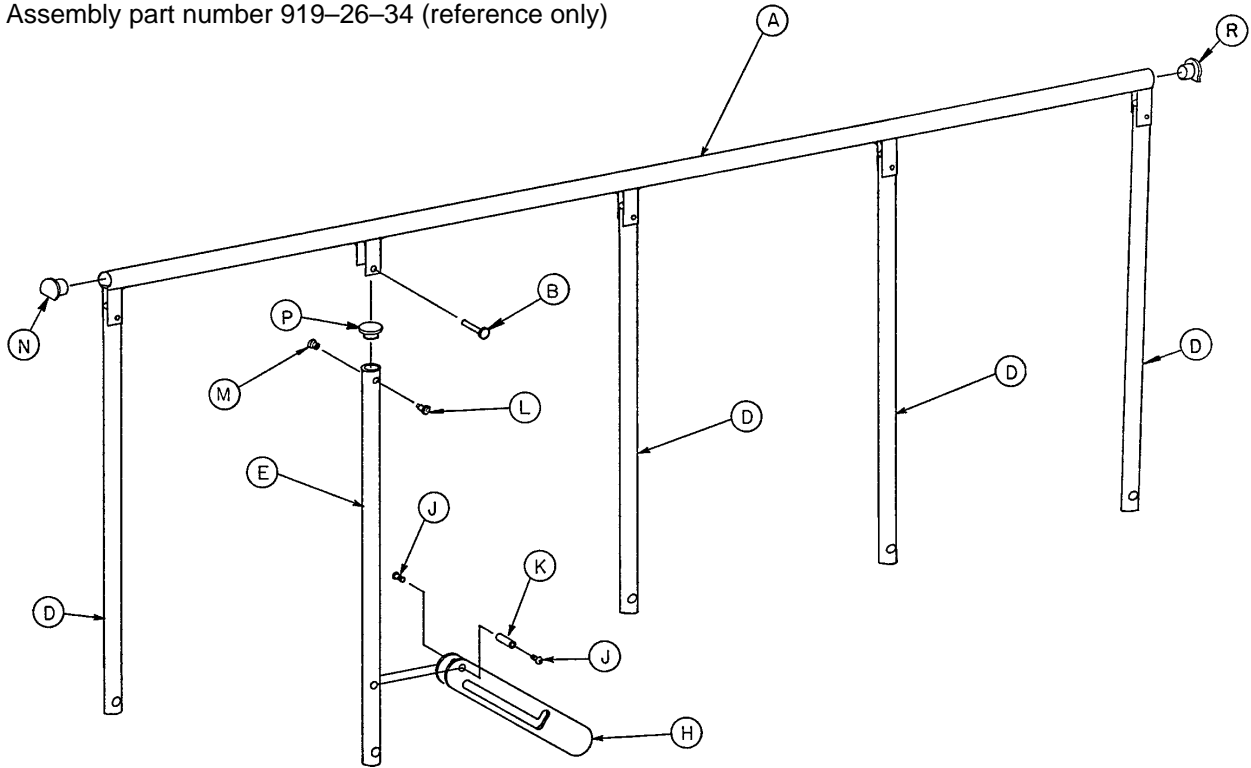
Assembly part number 919-26-31 (reference only)



Item	Part No.	Part Name	Qty.
A	(page 18)	Siderail Assembly, Right	1
B	14-19	Washer	15
C	4-53	But. Hd. Cap Screw	5
D	16-11	Flexlock Nut	6
E	14-17	Washer	6
F	946-1-41	Cap	1
H	919-1-71	Bumper, Right	1
J	4-56	Soc. Hd. Cap Screw	1
K	3-2	Hex Hd. Cap Screw	2
L	16-16	Fiberlock Nut	2
M	946-26-12	Siderail Pivot	5

Left Siderail Assembly

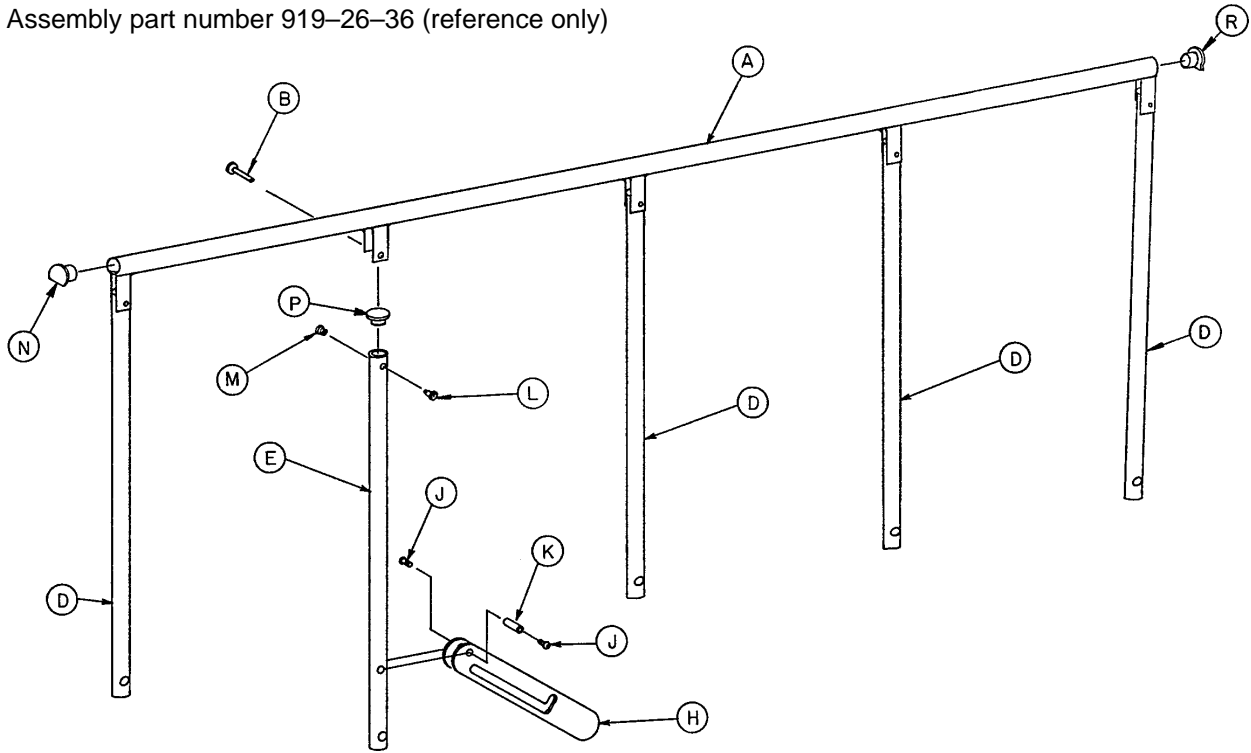
Assembly part number 919-26-34 (reference only)



Item	Part No.	Part Name	Qty.
A	919-26-40	Top Rail	1
B	25-61	Semi-Tubular Rivet	5
D	919-26-37	Upright	4
E	919-26-38	Latch Upright	1
H	919-26-39	Siderail Latch Assembly	1
J	4-49	Hex Soc. But. Hd. Cap Screw	2
K	946-26-35	Pivot Sleeve	1
L	52-13	Spacer	5
M	52-14	Spacer	5
N	37-43	Siderail End Plug	1
P	37-42	Hole Plug	5
R	37-44	Modified Siderail End Plug	1

Right Siderail Assembly

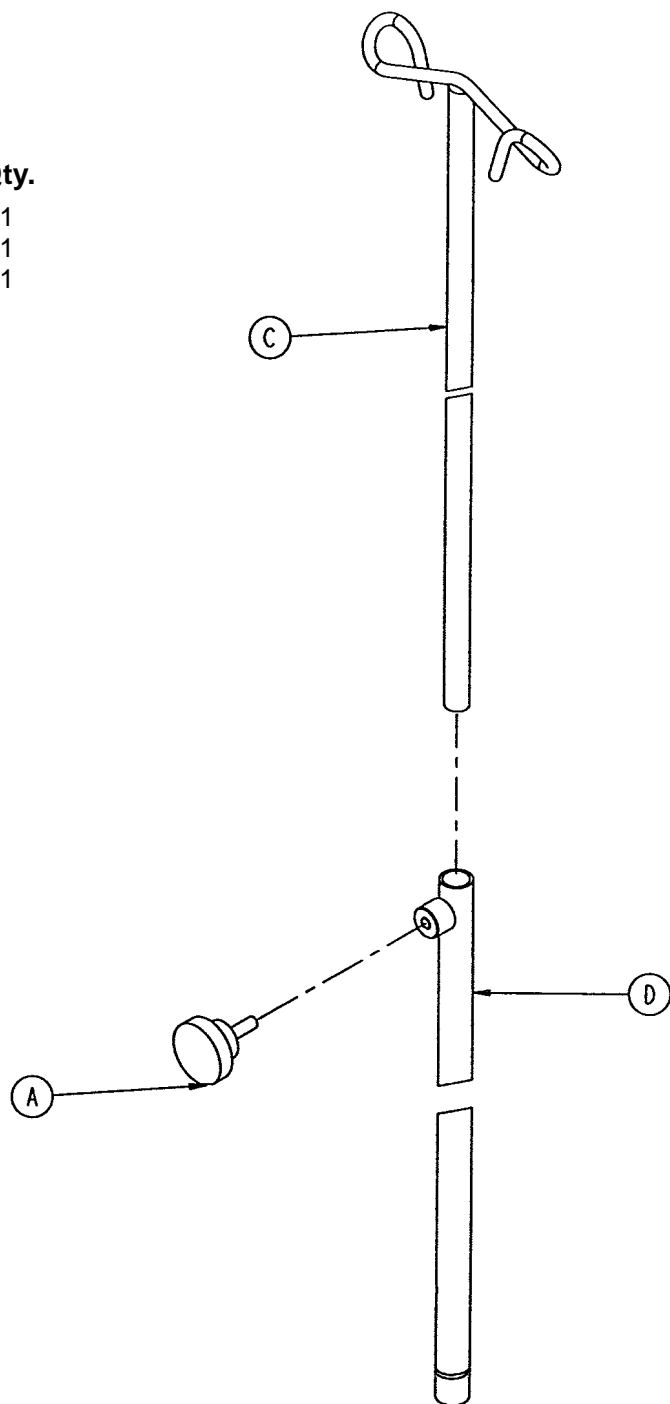
Assembly part number 919-26-36 (reference only)



Item	Part No.	Part Name	Qty.
A	919-26-40	Top Rail	1
B	25-61	Semi-Tubular Rivet	5
D	919-26-37	Upright	4
E	919-26-38	Latch Upright	1
H	919-26-39	Siderail Latch Assembly	1
J	4-49	Hex Soc. But. Hd. Cap Screw	2
K	946-26-35	Pivot Sleeve	1
L	52-13	Spacer	5
M	52-14	Spacer	5
N	37-43	Siderail End Plug	1
P	37-42	Hole Plug	5
R	37-44	Modified Siderail End Plug	1

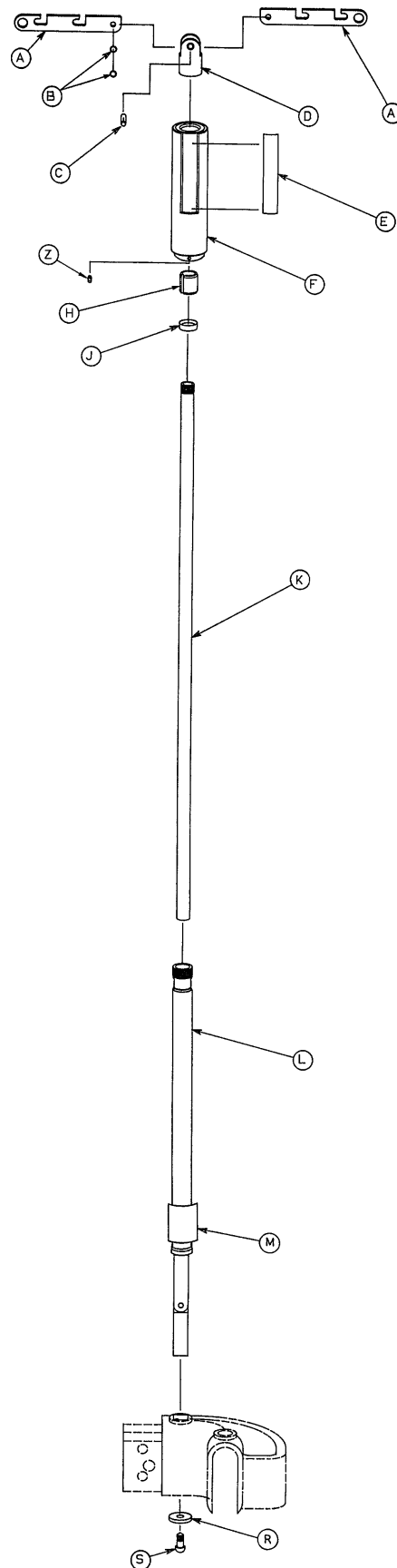
390-25 Standard, Removable I.V. Pole Assembly

Item	Part No.	Part Name	Qty.
A	24-23	Plastic Knob	1
C	390-3-53	Double I.V. Ass'y	1
D	393-3-43	Tube Assembly	1



946-224-10 Folding I.V. Holder Assembly

Item	Part No.	Part Name	Qty.
A	946-224-1	Hanger	2
B	14-16	Washer	2
C	26-147	Groove Pin	1
D	946-224-2	Top Bracket, Mach'd	1
E	946-224-18	Label	2
F	946-224-33	Grip Assembly	1
H	946-224-4	Lock	1
J	946-224-5	Ring	1
K	946-224-3	Inner Tube	1
L	946-224-30	Hinge & Outer Tube Ass'y	1
M	946-224-19	Label	1
R	11-158	Washer	1
S	4-113	But. Hd. Cap Screw	1
T	25-86	Pop Rivet	2
W	946-224-22	Rest	2
Z	21-107	Set Screw	1



Warranty

Limited Warranty:

Stryker Medical Division, a division of Stryker Corporation, warrants to the original purchaser that its products should be free from defects in material and workmanship for a period of one (1) year after date of delivery. Stryker's obligation under this warranty is expressly limited to supplying replacement parts and labor for, or replacing, at its option, any product which is, in the sole discretion of Stryker, found to be defective. Stryker warrants to the original purchaser that the frame and welds on its beds will be free from structural defects for as long as the original purchaser owns the bed. If requested by Stryker, products or parts for which a warranty claim is made shall be returned prepaid to Stryker's factory. Any improper use or any alteration or repair by others in such manner as in Stryker's judgement affects the product materially and adversely shall void this warranty. No employee or representative of Stryker is authorized to change this warranty in any way.

This statement constitutes Stryker's entire warranty with respect to the aforesaid equipment. STRYKER MAKES NO OTHER WARRANTY OR REPRESENTATION, EITHER EXPRESSED OR IMPLIED, EXCEPT AS SET FORTH HEREIN. THERE IS NO WARRANTY OF MERCHANTABILITY AND THERE ARE NO WARRANTIES OF FITNESS FOR ANY PARTICULAR PURPOSE. IN NO EVENT SHALL STRYKER BE LIABLE HEREUNDER FOR INCIDENTAL OR CONSEQUENTIAL DAMAGES ARISING FROM OR IN ANY MANNER RELATED TO SALES OR USE OF ANY SUCH EQUIPMENT.

To Obtain Parts and Service:

Stryker products are supported by a nationwide network of dedicated Stryker Field Service Representatives. These representatives are factory trained, available locally, and carry a substantial spare parts inventory to minimize repair time. Simply call your local representative, or call Stryker Customer Service at (800) 327-0770.

Supplemental Warranty Coverage:

Stryker has developed a comprehensive program of extended warranty options designed to keep your equipment operating at peak performance at the same time it eliminates unexpected costs. We recommend that these programs be activated *before* the expiration of the new product warranty to eliminate the potential of additional equipment upgrade charges. Stryker offers the following Supplemental Warranties:

Extended (Parts and Labor)

- All replacement parts (excluding mattresses and consumable items)
- Labor and travel for *all* scheduled and unscheduled calls
- Annual Preventive Maintenance Inspections and repairs
- JCAHO paperwork for preventive maintenance
- Priority Emergency Service

Standard (Labor Only):

- Labor and travel for *all* scheduled and unscheduled calls
- Annual Preventive Maintenance Inspections and repairs
- JCAHO paperwork for preventive maintenance
- Priority Emergency Service

Basic (Parts Only):

- All replacement parts (excluding mattresses and consumable items)
- Priority Emergency Service

Please call your local representative, or call (800) 327-0770 for further information

Warranty

Return Authorization:

Merchandise cannot be returned without approval from the Stryker Customer Service Department. An authorization number will be provided which must be printed on the returned merchandise. Stryker reserves the right to charge shipping and restocking fees on returned items.

SPECIAL, MODIFIED, OR DISCONTINUED ITEMS NOT SUBJECT TO RETURN.

Damaged Merchandise:

ICC Regulations require that claims for damaged merchandise must be made with the carrier within fifteen (15) days of receipt of merchandise. **DO NOT ACCEPT DAMAGED SHIPMENTS UNLESS SUCH DAMAGE IS NOTED ON THE DELIVERY RECEIPT AT THE TIME OF RECEIPT.** Upon prompt notification, Stryker will file a freight claim with the appropriate carrier for damages incurred. Claim will be limited in amount to the actual replacement cost. In the event that this information is not received by Stryker within the fifteen (15) day period following the delivery of the merchandise, or the damage was not noted on the delivery receipt at the time of receipt, the customer will be responsible for payment of the original invoice in full.

Claims for any short shipment must be made within thirty (30) days of invoice.

stryker[®]
Medical

6300 Sprinkle Road, Kalamazoo, MI 49001-9799

(800) 327-0770

DH 3/00 919-1-282 REV D