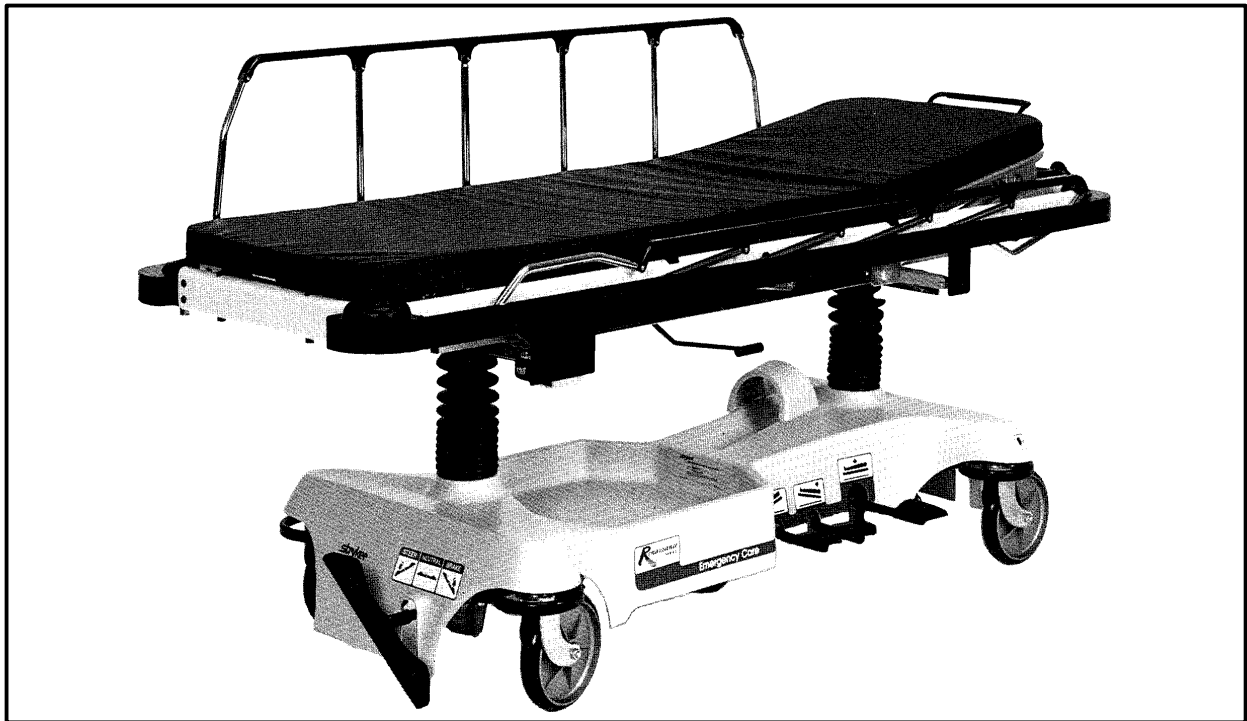

IMPORTANT
File in your
maintenance
records

stryker[®]
Medical



Renaissance Series

1026 Full Length X-Ray Stretcher

MAINTENANCE MANUAL

For Parts or Technical Assistance
1-800-327-0770

Table of Contents

Introduction

Specifications	2
Warning / Caution / Note Definition	2

Preventative Maintenance

Cleaning	3
Biannual Checklist	3

Service Information

Pneumatic Fowler Adjustment	4
Removal Of Excess Air (Vacuum) From The Hydraulic System	4
Pedal Linkage Adjustment – Dual Side Control Base	5
Pedal Linkage Adjustment – Dual End Control Base	6
Caster Assembly Replacement	7
Caster Cover Installation And Removal	8
Hydraulic System Troubleshooting	9
Checking Hydraulic Fluid Level	10
Jack Descent Rate Adjustment	10
Hydraulic Check Valve Replacement	
Replacement Of Valve #1	11
Replacement Of Valve #2	12
Replacement Of Valve (Poppet) #3	12
Brake Adjustment	13
Base Lubrication	13

Assembly Drawings and Parts Lists

<i>Side Control Base Assembly (with Brakes)</i>	14, 15
Brake Adjuster Assembly	16
Brake Cam Assembly	17
Reduced Length Brake/Steer Base Option	19
<i>End Control Base Assembly (with Brakes)</i>	20, 21
End Control Brake Pedal Ass'y, Head & Foot End	22
Caster Assembly with Steerlock	23
Caster and Caster Cover Replacement Kits	24
Fifth Wheel Assembly	25
Side Control Base Hood Labeling Assembly	26
End Control Base Hood Labeling Assembly	27
<i>Side Control Base Assembly (with Jacks)</i>	28, 29
Pedal Base Assembly, Pump	30
Pedal Base Assembly, Head End, Left	31
Pedal Base Assembly, Head End, Right	32
Side Control Base Hood Assembly	33
<i>End Control Base Assembly (with Jacks)</i>	34, 35
End Control Pump Pedal Assembly, Head & Foot	36
End Control Base Hood Assembly	37
Jack Assembly	38
Jack Base Assembly	39
Full Length X-Ray Pneu. Fowler Litter	40
Basic Frame Assembly	41
Pneumatic Fowler Assembly	42
Full Length X-Ray Manual Fowler Litter	43
Basic Frame Assembly	44
Manual Fowler Assembly	45
Trend. Limiter Assembly	46
X-Ray Tray Assembly	47
Siderail Ass'y, Right & Left	48
Folding I.V. Holder Assembly	49

Warranty

Obtaining Parts and Service	50
Supplemental Warranty Coverage	50
Return Authorization	51
Freight Damage Claims	51

Introduction

INTRODUCTION

This manual is designed to assist you with the operation and maintenance of the 1026 Full Length X-Ray Stretcher. Read it thoroughly before using the equipment or beginning any maintenance on it.

SPECIFICATIONS

Maximum Weight Capacity	500 pounds
Overall Bed Length/Width	82"/28.5"
Minimum/Maximum Bed Height	25.5"/34.75"
Bed Weight w/Accessories	250 pounds (average)
Fowler Angle	0 to 90 °
Trendelenberg/Reverse Trendelenberg	-15 ° to +18 °

WARNING / CAUTION / NOTE DEFINITION

The words WARNING, CAUTION and NOTE carry special meanings and should be carefully reviewed.

WARNING

The personal safety of the patient or user may be involved. Disregarding this information could result in injury to the patient or user.

CAUTION

These instructions point out special procedures or precautions that must be followed to avoid damaging the equipment.

NOTE

This provides special information to make maintenance easier or important instructions clearer.

Preventative Maintenance

CLEANING

1. Hand wash all surfaces of the bed with warm water and mild detergent. Dry thoroughly.
2. Clean Velcro **AFTER EACH USE**. Saturate Velcro with disinfectant and allow disinfectant to evaporate. (Appropriate disinfectant for nylon Velcro should be determined by the hospital.)

NOTE

Quaternary Germicidal Disinfectants, used as directed, and/or Chlorine Bleach products, typically 5.25% Sodium Hypochlorite in dilutions ranging between 1 part bleach to 100 parts water, and 2 parts bleach to 100 parts water are not considered mild detergents. These products are corrosive in nature and may cause damage to your stretcher if used improperly. If these types of products are used to clean Stryker patient handling equipment, measures must be taken to insure the stretchers are rinsed with clean water and thoroughly dried following cleaning. Failure to properly rinse and dry the stretchers will leave a corrosive residue on the surface of the stretcher, possibly causing premature corrosion of critical components. Failure to follow the above directions when using these types of cleaners may void this product's warranty.

BIANNUAL CHECKLIST

- _____ All fasteners secure (reference all assembly prints)
- _____ Siderails move and latch properly (page 48)
- _____ All casters lock with brake pedal engaged (page 13)
- _____ Steer function working properly
- _____ All casters secure and swivel properly
- _____ Body restraints working properly
- _____ I.V. pole intact and operating properly (page 49)
- _____ Oxygen bottle holder intact and operating properly (page 33 & 37)
- _____ Fowler operates and latches properly (pneumatic, page 4, manual, page 45)
- _____ Trendelenberg/Reverse Trendelenberg operating properly
- _____ No rips or cracks in mattress cover
- _____ Ground chain intact
- _____ No leaks at hydraulic connections
- _____ Hydraulic jacks holding properly (page 9)
- _____ Hydraulic drop rate set properly (page 10)
- _____ Hydraulic oil level sufficient (page 10)
- _____ Lubricate where required, including the brake adjuster assembly and the brake cam (page 13)
- _____ Full length X-Ray slide track clear of dust and debris

Serial No. _____

Completed By: _____

Date: _____

Service Information

PNEUMATIC FOWLER ADJUSTMENT

Required Tools:

3/32 Hex Allen Wrench	Towel or Cloth
Channel Lock Pliers	Thread "Loctite"

Adjustment Procedure:

1. Refer to drawings 1026–127–31 (Full Length X-Ray Pneumatic Fowler Litter Assembly, page 40) and 926–175–55 (Pneumatic Fowler Assembly, page 42) for parts identification.
2. For easier access, move Fowler to 75 degrees or higher.
3. Using a 3/32 hex Allen wrench, remove set screws "AL" (see drawing 1026–127–31) located in inside center of item "P" (see drawing 926–175–55).
4. Wrap a towel or cloth around the gas cylinder actuator shaft(s) so as not to mark the shaft. Using channel lock pliers, turn the actuator shaft "into" item "P" for more positive contact with the control handle, or "away" from item "P" for less contact with the control handle.

NOTE

More contact is necessary when activation of the cylinders is difficult. Less contact is necessary when the Fowler does not support the weight of the patient.

5. Replace the set screws "AL" using "Loctite" and tighten completely.
6. Be sure that the Fowler activates and holds properly before returning the stretcher to service.

REMOVAL OF EXCESS AIR (VACUUM) FROM THE HYDRAULIC SYSTEM

Procedure:

1. Verify all hydraulic linkages are secure and operating properly (see pedal linkage adjustment procedure page 5 or 6).
2. Using pump pedal, actuate system several times. This will force the air through the system and the jack should now pump up.

Service Information

PEDAL LINKAGE ADJUSTMENT – DUAL SIDE CONTROL BASE

Required Tools:

3/32 Hex Allen Wrench

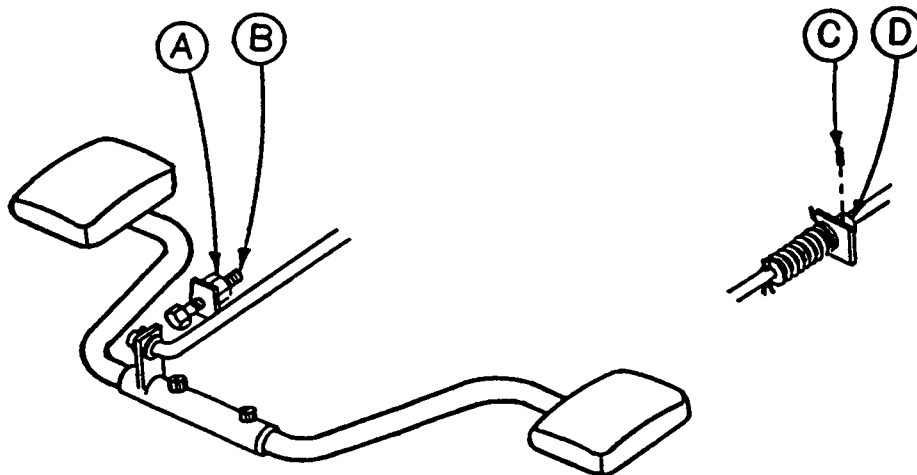
7/16 Open End Wrench

1/2 Open End Wrench

(2) Wooden blocks (10 – 12 inches in length)

Adjustment Procedure:

1. Pump the litter up to full height.
2. Lift the base hood, separating the hood from the base frame. Using the wooden blocks, support the base hood.
3. To adjust the foot end descent pedal, use a 5/32 hex Allen wrench to loosen the set screw (C) in the stop collar (D) on the release rod. Hold the pedal parallel to the floor and slide the collar up to the bracket on the release rod. Tighten the set screw on the stop collar. Be sure the head end and foot end descent pedals are level with each other. Repeat for the head end pedal, if necessary.
4. Once the pedals are level, be sure the paddle on the end of the release rod for the foot end jack is slightly touching the actuating stem on the jack base. If it is not, use a 3/32 hex Allen wrench to loosen the set screw on the paddle hub. Adjust the paddle to **JUST** touch the stem of the jack. Tighten the set screw in the paddle hub. Repeat for the head end jack, if necessary.
5. Depress the pedal for the foot end jack. The jack should start to descend about the same time the paddle on the end of the rod contacts the sleeve on the jack actuating stem. The bracket on the foot pedal body should hit the stop screw (B). Any further movement could cause damage to the stem components inside the jack housing. To adjust the stop screw, use a 1/2 open end wrench to loosen the hex jam nut (A). Turn the screw and re-tighten the hex jam nut. Repeat for the head end jack.
6. Pump the litter up to full height.
7. Step on both descent pedals at the same time. Both ends of the litter should lower with the foot end lowering slightly faster than the head end. If it does not, refer to the procedure for adjusting the jack descent rate.
8. Remove the wooden blocks supporting the base hood. Use the pedal cut-outs on the side of the hood as a guide for proper re-positioning.



Service Information

PEDAL LINKAGE ADJUSTMENT – DUAL END CONTROL BASE

Required Tools:

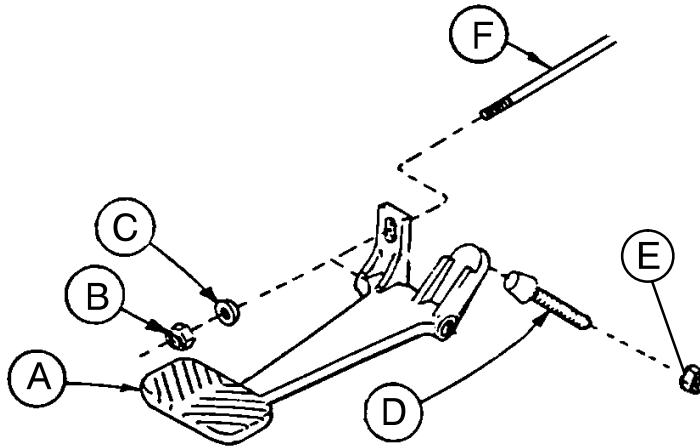
7/16 Open End Wrench

1/2 Open End Wrench

(2) Wooden Blocks (10 – 12 inches in length)

Adjustment Procedure:

1. Pump the litter up to full height.
2. Lift the base hood, separating the hood from the base frame. Using the wooden blocks, support the base hood.
3. The descent pedals should be level with each other and there should be approximately 4 inches between the floor and the bottom of the pedal. To raise the pedal height, use a 1/2 open end wrench to loosen the hex jam nut (E). Using your hand, turn the screw (D) into the bracket. To lower the pedal height, loosen the screw. Tighten the hex jam nut (E) after the correct height is achieved.
4. Once the pedals are level, the release rod can be adjusted. Using a 7/16 wrench, turn nut (B) clockwise to shorten the release length and counterclockwise to increase the length.
5. Depress the pedal and be sure the jack descent is triggered when the pedal is approximately one inch from the floor. The descent should stop when the pedal is released and the jack height should hold. Repeat the above procedures for the descent pedal at the other end of the bed.
6. After adjusting each descent pedal individually, depress both pedals at the same time. Both jacks should start descending when the pedals are approximately one inch from the floor. The foot end should lower slightly faster than the head end. If it does not, see procedure for adjusting the jack descent rate.
7. Remove the wooden blocks supporting the base hood and secure the hood to the base frame.



Service Information

CASTER ASSEMBLY REPLACEMENT*

Required Tools:

1/8 Roll Pin Punch

Flat Punch (any size larger than 1/8)

Needle Nose Pliers

3/4 Inch Wrench

1 Inch Wrench

Drill with 1/8 inch Drill Bit

Hammer

Floor Jack

(2) Wooden Blocks (10 – 12 inches in length)

Torque Wrench (w/ Ft. Lbs. Adjust.)

Replacement Procedure:

1. Pump the litter up to full height.
2. Lift the base hood, separating the hood from the base frame. Using the wooden blocks, support the base hood.
3. Using a 1/8 roll pin punch and hammer, remove roll pin located in center of lug nut holding wheel assembly to base frame.
4. Carefully remove plastic wheel covers.
5. Using a floor jack, lift base frame approximately 4 inches off the ground.
6. While holding cap screw with a 3/4 inch wrench, turn lug nut with a 1 inch wrench to loosen wheel assembly from base frame. Remove wheel.
7. Install the new wheel assembly with new lug nut and tighten down to 60 – 65 foot-pounds torque.

WARNING

Never reuse the old lug nut, cap screw or roll pin once removed from base frame.

8. Lower the floor jack and set aside to be used, if needed, with another wheel.

9. Drill a 1/8 hole in center of lug nut, going completely through the lug nut.

CAUTION

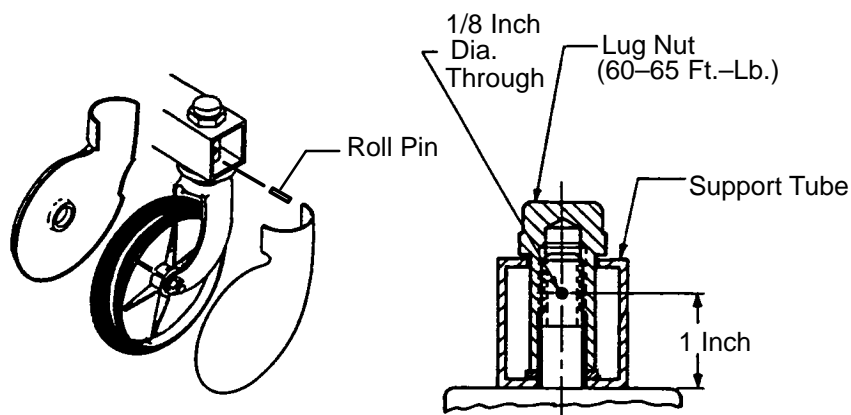
Be careful not to "oblong" the hole in the lug nut when drilling.

10. Using needle nose pliers, hold on to roll pin and tap into place. Finish driving roll pin with a flat head punch and a hammer until flush with the lug nut.

11. Install plastic wheel covers onto wheel.

12. Remove the wooden blocks supporting the base hood and secure the hood to the base frame.

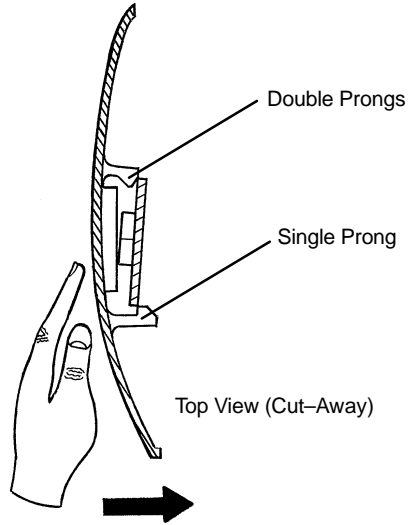
***See page 24 for replacement part numbers (Caster and Cover Assembly).**



Service Information

CASTER COVER INSTALLATION AND REMOVAL

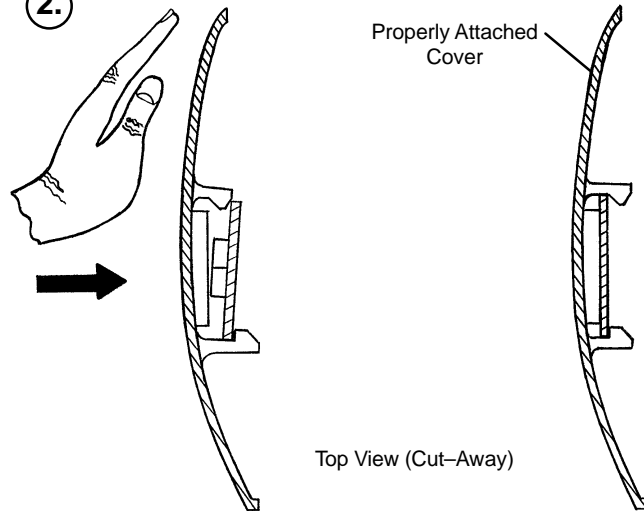
1.



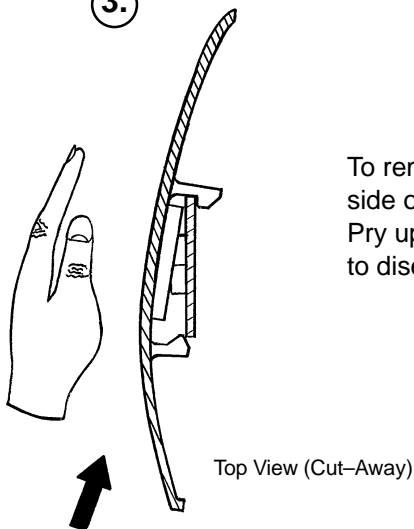
Looking through the larger of the two side cut-outs, align cover with axle nut or bolt head, as shown. Push down on the opposite side of the cover until single prong engages with caster horn.

Push with palm on cover until double prongs engage.

2.



3.



To remove wheel cover, insert large screwdriver into cut-out in side of wheel cover and into the space between the double prongs. Pry up cover to disengage double prongs and push sharply upward to disengage single prong.

Service Information

HYDRAULIC SYSTEM TROUBLESHOOTING

NOTE

Be sure the pedal linkage has been adjusted properly before beginning service on the jacks (see page 5 or page 6).

PROBLEM/SYMPTOM	SOLUTION
Jack will not raise to full height.	Add hydraulic fluid (see p. 10). Check for leaks.
Jack will not hold in raised position.	Close the needle valve completely. If the jack holds, replace valve #1 (see p. 11). If the jack does not hold, replace valve #2 (see p. 12).
Jack will not pump up and the jack actuator rod does not move.	Close the needle valve. If the jack will now pump up, replace valve #1. If the jack still will not pump up after closing the needle valve, replace valve #3 (see p. 12).
Jack will not pump up but the jack actuator rod does move when the pump pedal is activated.	Replace valve #2 (see p. 12).
Jack will not pump up and the jack actuator rod may or may not move.	Remove excess air (vacuum) in system (see p. 10).

Contact Stryker technical service at 1-800-327-0770 for further assistance.

Service Information

CHECKING HYDRAULIC FLUID LEVEL

Required Tools:

3/8 Open End Wrench

3/4 Open End Wrench

Procedure:

WARNING

To avoid personal injury or damage to the stretcher, remove the litter and the base hood before beginning service on the jacks.

1. Using a 3/8 open end wrench, remove square head set screws from both head and foot end jack support tubes. Remove litter top and set aside.
 2. Lift base hood off base frame and set aside.
 3. Be sure there are no hydraulic leaks. If there are, jack replacement will be necessary.
 4. Lower the jack to the full down position.
 5. Using a 3/4 open end wrench, slowly turn the fill plug located on the side of the reservoir counterclockwise to allow excess system pressure to vent. Remove the fill plug.
 6. The hydraulic fluid should be visible at the bottom of the fill hole. If it is not, add Mobil Aero HFA hydraulic fluid (Stryker part number 2020-70-475) until the fluid is visible at the bottom of the fill hole. Replace the fill plug.
-

CAUTION

Use of other types of oil may damage hydraulic units.

7. Replace the hood and the litter.

JACK DESCENT RATE ADJUSTMENT

Required Tools:

Screwdriver

(2) Wooden Blocks (10 – 12 inches in length)

Adjustment Procedure:

1. Pump the litter up to full height.
2. Lift the base hood, separating the hood from the base frame. Using the wooden blocks, support the base hood.
3. The descent rate needle valve is located on the base of the jack. Turning the needle valve clockwise, with a screwdriver, will decrease the rate of descent. Turning it counterclockwise will increase the rate of descent.
4. Adjust the needle valve so that the foot end of the stretcher descends slightly faster than the head end.

NOTE

The larger percentage of a patient's weight is located in the torso area. Adjust descent rate accordingly.

5. Remove the wooden blocks supporting the base hood and secure the hood to the base frame.

NOTE

The jack descent rate was preset at the factory to drop the foot end faster than the head. It is recommended that the foot drop faster to avoid patient disorientation.

HYDRAULIC CHECK VALVE REPLACEMENT

Required Tools:

3/8 Open End Wrench
 3/4 Open End Wrench
 7/32 Hex Allen Wrench

Stiff Wire (with bent, pointed end)
 Torque Wrench (with Ft. Lbs. adjust.)
 1/2 Inch Diameter Rod

Small Needle Nose Pliers

Replacement of Valve #1

WARNING

To avoid personal injury or damage to the stretcher, remove the litter and the base hood before beginning service on the stretcher.

1. Using a 3/8 open end wrench, remove square head set screws from both head and foot end jack support tubes. Remove litter top and set aside.
2. Lift base hood off base frame and set aside.
3. Lower the jack to full down position. The actuator must be manually lowered while depressing the appropriate release pedal.
4. Remove the pin body assembly (4) with a 3/4 open end wrench and discard the housing gasket (5).

NOTE

Although the hydraulic fluid is not under pressure, some fluid loss will occur. The fluid loss should be minimal but covering the floor is advisable.

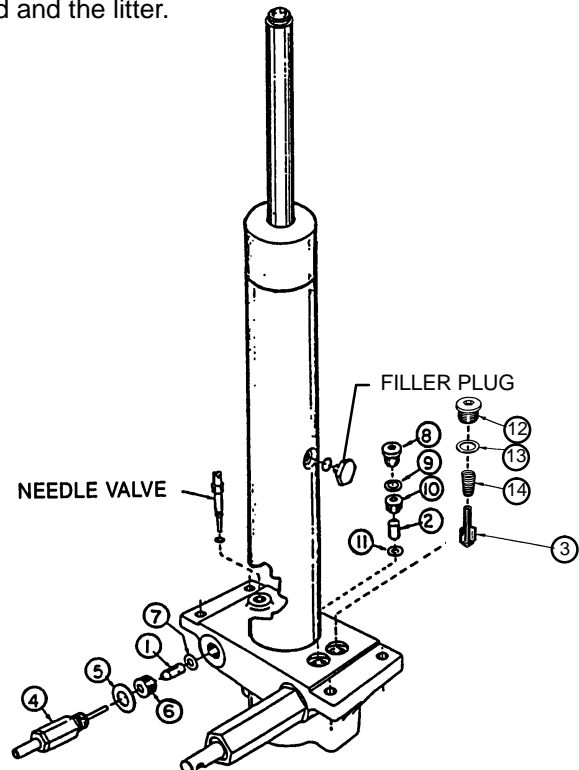
5. Using a 7/32 hex Allen wrench, remove the valve plug (6).
6. Using a stiff wire with a bent, pointed end, remove and discard the valve (1) and the seal (7).
7. Install the new seal (7) flat to the bottom of its hole with a 1/2 inch diameter rod and install the new valve (1) with the beveled end out (as shown in the illustration).
8. Install the valve plug (6) with the countersunk end first and the beveled end out. Tighten to 10 foot pounds torque.
9. Install the pin body assembly (4) with the new housing gasket (5) and tighten to 10 foot pounds torque.
10. Pump up the jack to the maximum height. Apply weight to be sure the jack holds its position and there are no hydraulic leaks before replacing the base hood and the litter.

ITEM	PART NO.	PART NAME
1	926-20-153	Check Valve
2	926-20-153	Check Valve
3	715-1-341	Poppet
4	715-100-312	Pin Housing Assembly*
	715-270-100	Valve Assembly**
5	715-1-330	Housing Gasket
6	715-1-309	Valve Plug
7	926-20-154	Seal
8	715-1-101	Base Plug
9	926-20-156	Seal
10	715-1-309	Valve Plug
11	926-20-154	Seal
12	715-1-301	Base Plug
13	926-20-156	Seal
14	390-2-134	Conical Comp. Spring

* Used on jack part number 715-100-310.

** Used on jack part number 715-270-10.

(see label on side of jack reservoir for jack part number)



Service Information

HYDRAULIC CHECK VALVE REPLACEMENT (CONT'D)

Replacement of Valve #2

WARNING

To avoid personal injury or damage to the stretcher, remove the litter and the base hood before beginning service on the jacks. Lower the jack rod completely to relieve the pressure on the pump piston side of the jack. This will prevent large hydraulic fluid loss and possible damage when the base plugs are removed.

1. Remove the base plug (8) and discard the seal (9).
2. Remove the valve plug (10).
3. Using a stiff wire with a bent, pointed end, remove the valve (2) and the seal (11) and discard the seal.
4. Install the new seal (11) flat to the bottom of its hole with a 1/2" diameter rod.
5. Install the new valve (2) with the beveled end out (as shown in the illustration).
6. Install the valve plug (10) and tighten to 10 foot-pounds torque.
7. Install the new seal (9) with the base plug (8) and tighten to 10 foot-pounds torque.
8. Pump up the jack to the maximum height.
9. Be sure there are no hydraulic leaks before replacing the base hood and the litter.

Replacement of Valve (Poppet) #3

WARNING

To avoid personal injury or damage to the stretcher, remove the litter and the base hood before beginning service on the jacks. Lower the jack rod completely to relieve the pressure on the pump piston side of the jack. This will prevent large hydraulic fluid loss and possible damage when the base plugs are removed.

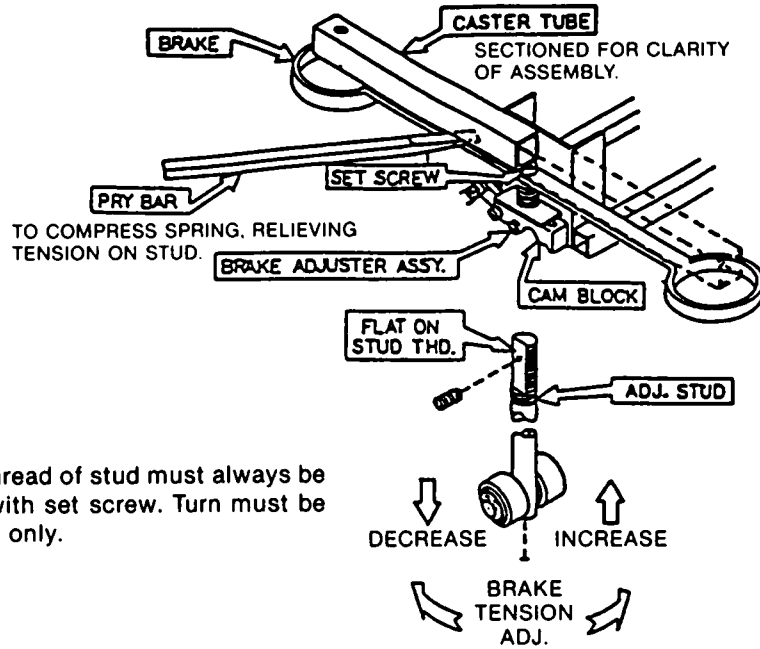
1. Remove the base plug (12) and discard the seal (13).
2. Remove the compression spring (14).
3. Using a small needle nose pliers, remove the poppet (3).
4. Install the new poppet (3).
5. Install the compression spring (14).
6. Install the new seal (13) and the base plug (12) and tighten to 10 foot-pounds torque.
7. Pump up the jack to the maximum height to check its operation.
8. Check for hydraulic leaks before replacing the base hood and the litter.

Service Information

BRAKE ADJUSTMENT

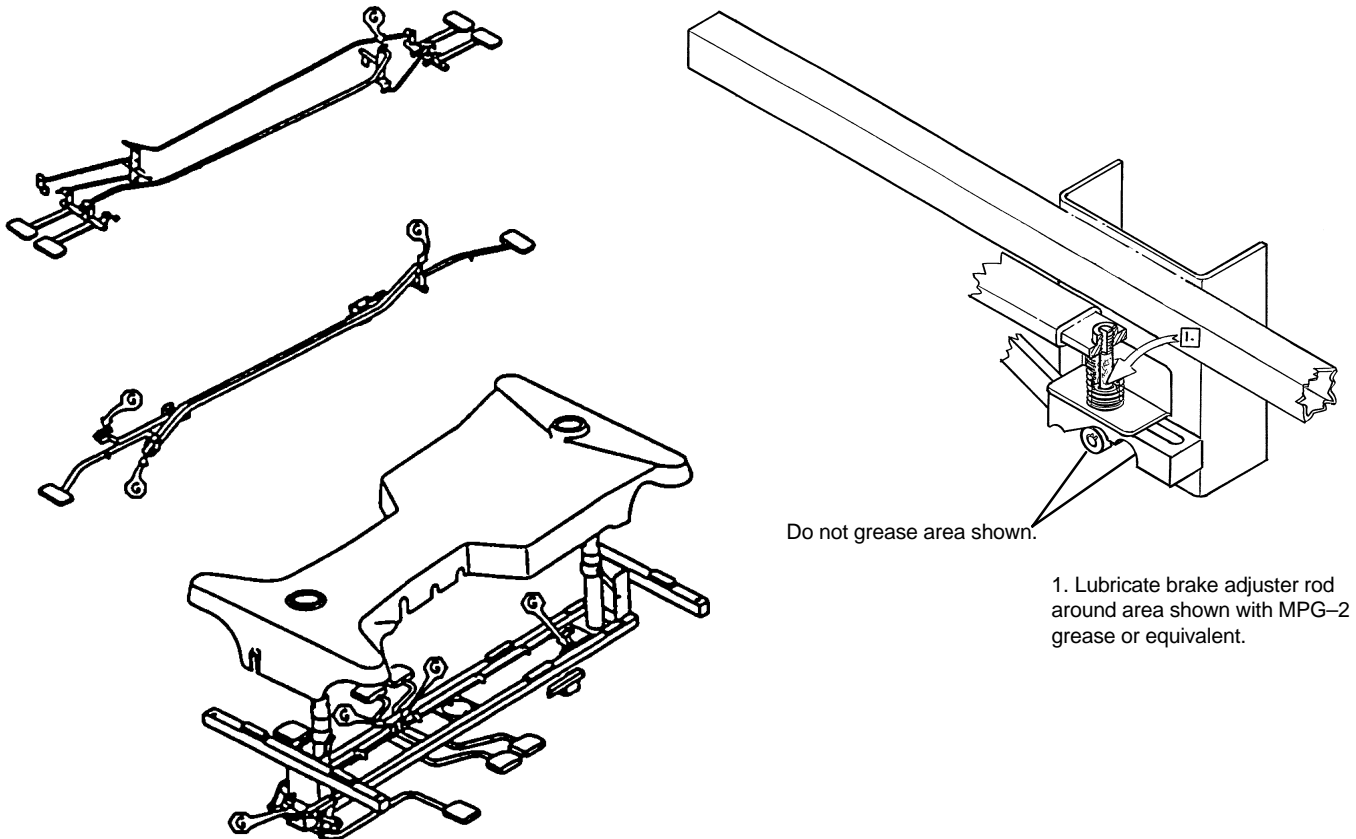
Required Tools:

3/32" Hex Allen Wrench
Pry Bar
Thread "Locktite"

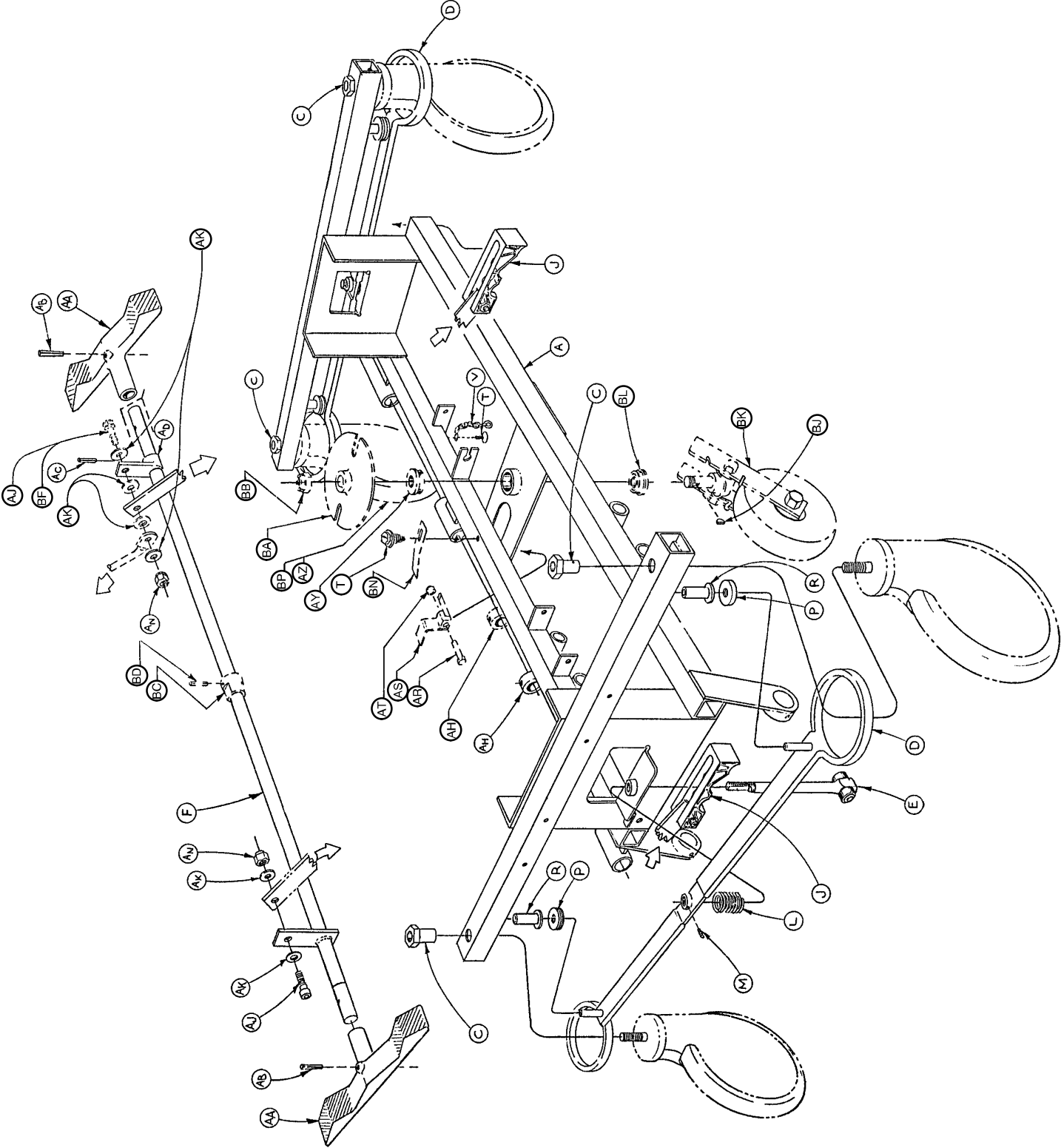


Flat on thread of stud must always be aligned with set screw. Turn must be full circle only.

BASE LUBRICATION



715-1-250 Side Control Base Assembly (with Brakes)



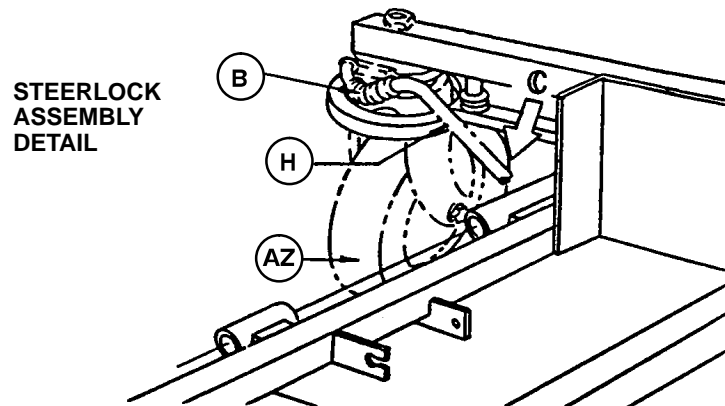
715-1-250 Side Control Base Assembly (with Brakes)

Item	Part No.	Part Name	Qty.
A	715-1-245	Base Weldment Assembly	1
B	38-211	Spring	1
C	715-1-158	Caster Nut	4
D	715-1-61	Caster Brake Assembly	2
E	(Page 16)	Brake Adjuster Assembly	2
F	715-1-231	Brake/Steering Rod Assembly	1
H	1000-10-62	Steering Lock Linkage Bar	1
J	(Page 17)	Brake Cam Assembly	2
L	715-1-94	Compression Spring	2
M	21-50	Set Screw	2
P	715-1-11	Brake Cushion	4
R	946-1-116	Brake Bar Bushing	4
T	23-25	Self-Tapping Screw	2
V	715-1-156	Grounding Chain	1
AA	715-201-201	Brake/Steer Pedal	2
AB	26-261	Groove Pin	2
AC	26-13	Roll Pin	1
AD	715-1-165	Actuator Plate Assembly	1
AH	42-20	Collar w/ Set Screw	2
AJ	8-17	Soc. Hd. Cap Screw	2*
AK	14-2	Nylon Washer	4
AN	16-2	Fiberlock Nut	2
AR	3-20	Hex Hd. Cap Screw	1
AS	715-1-217	Fifth Wheel Latch	1
AT	16-16	Nylock Nut	1
AY	715-1-157	Fifth Wheel Bearing	1
AZ	(Page 23)	Steering Caster Assembly	1**
BA	715-1-337	Fifth Wheel Plate Assembly	1
BB	16-49	Flexlock Nut	1
BC	715-1-161	Fifth Wheel Cam	1
BD	26-8	Roll Pin	1
BF	8-21	Soc. Hd. Cap Screw	1**
BJ	715-1-149	Woodruff Key	1
BK	(Page 25)	Fifth Wheel Assembly	1
BL	81-219	Bearing	1
BN	715-1-136	Fifth Wheel Spring	1
BP	(Page 24)	Caster Wheel Assembly	3***

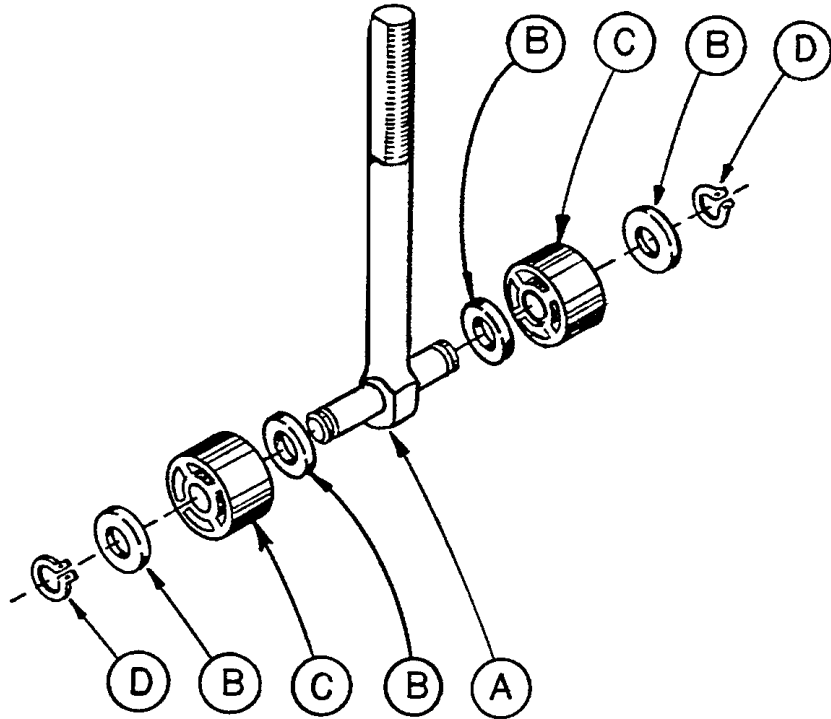
* Item AJ to be used only when fifth wheel is ordered.

** Items AZ and BF to be used only when steerlock caster is ordered.

*** Item BP quantity of four when fifth wheel is ordered.

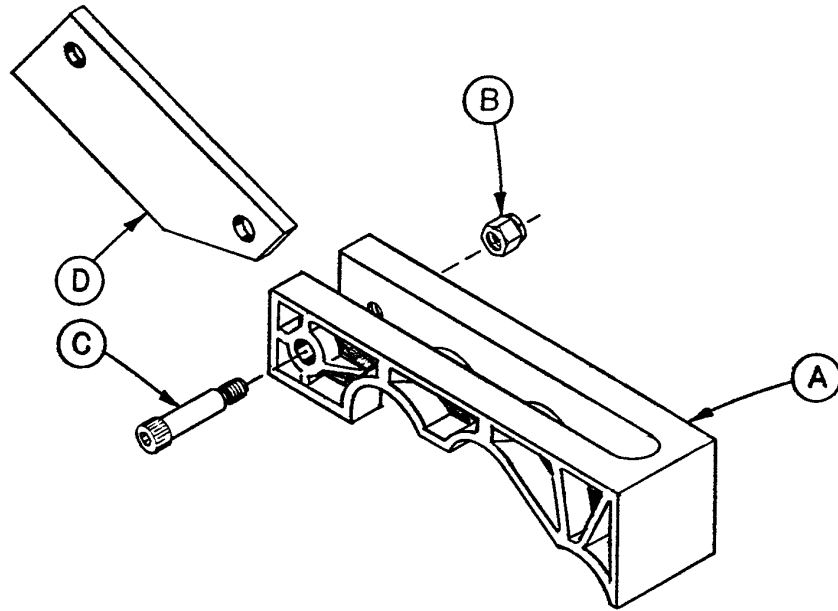


715-1-150 Brake Adjuster Assembly



Item	Part No.	Part Name	Qty.
A	715-1-62	Threaded Stud Assembly	1
B	14-4	Nylon Washer	4
C	715-1-180	Bearing	2
D	28-8	Retaining Ring	2

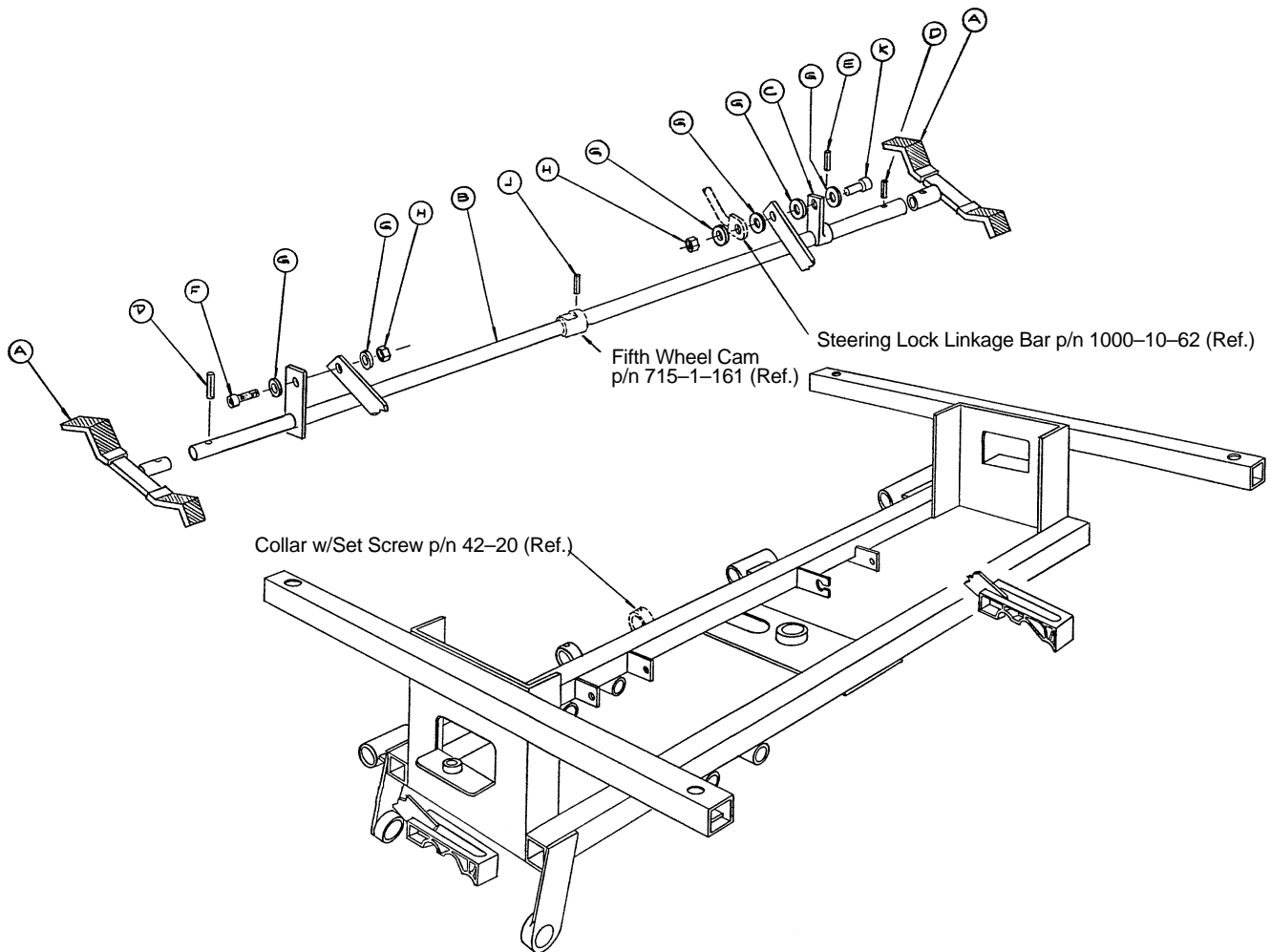
715-1-213 Brake Cam Assembly



Item	Part No.	Part Name	Qty.
A	715-1-221	Brake Cam	1
B	16-59	Fiberlock Nut	1
C	8-21	Soc. Hd. Cap Screw	1
D	715-1-173	Brake Connecting Link	1

Notes

1010-90 Reduced Length Brake/Steer Base Option

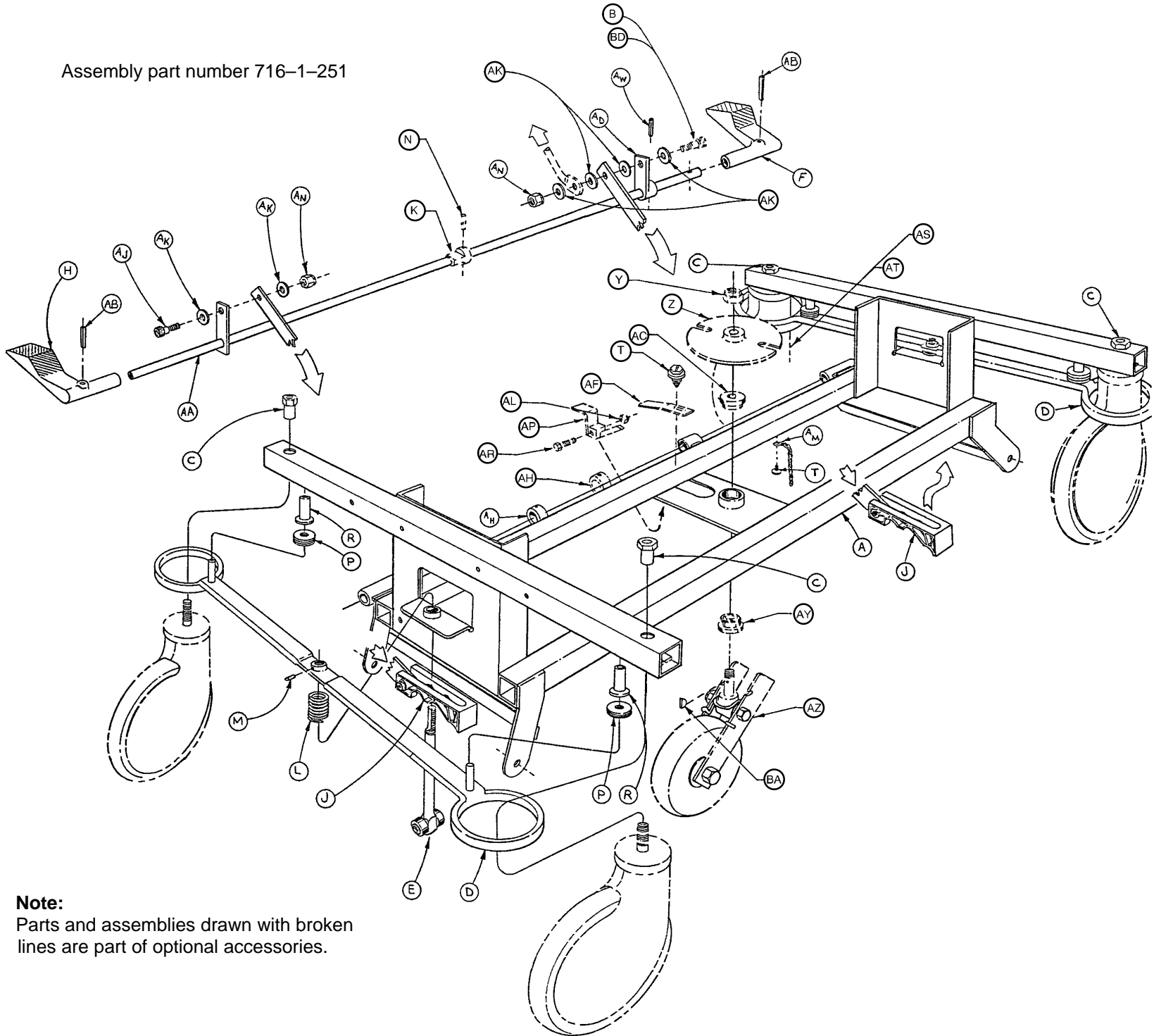


Item	Part No.	Part Name	Qty.
A	1010-90-10	Brake Pedal Assembly	2
B	1010-90-24	Brake Bar	1
C	715-1-165	Actuator Plate Assembly	1
D	26-35	Roll Pin	2
E	26-13	Roll Pin	1
F	8-17	Shoulder Bolt	1
G	14-2	Nylon Washer	6
H	16-2	Fiberlock Nut	2
J	26-8	Roll Pin	1
K	8-21	Shoulder Bolt	1

NOTE

This assembly pertains only to units equipped with the reduced length brake/steer option (for Surgi-lift clearance). The width of the brake/steer pedal will be 11 1/4 inches if the unit is equipped with this option. If the pedal is wider than 11 1/4 inches, base assembly 715-1-250 (page 14 & 15) or 716-1-251 (page NO TAG & NO TAG) should be referenced.

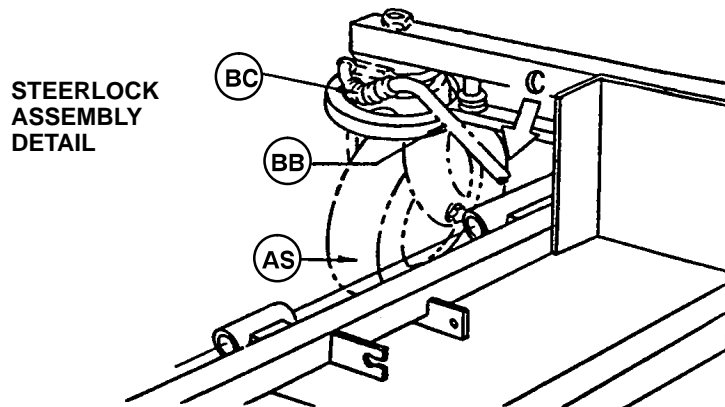
Assembly part number 716-1-251



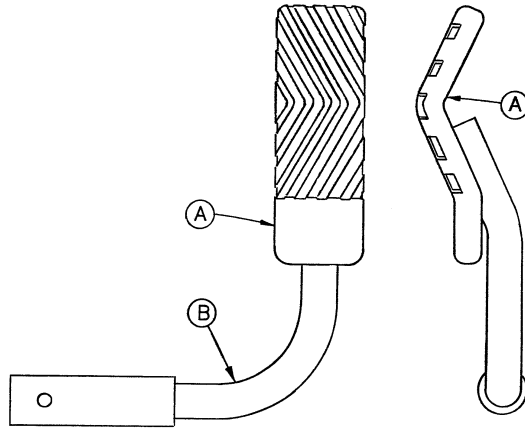
Note:
Parts and assemblies drawn with broken lines are part of optional accessories.

716-1-251 End Control Base Assembly (with Wheels)

Item	Part No.	Part Name	Qty.
A	716-1-246	Base Weldment Ass'y	1
B	8-17	Soc. Hd. Shoulder Bolt	1
C	715-1-158	Caster Nut	4
D	715-1-61	Caster Brake Assembly	2
E	(Page 16)	Brake Adjuster Assembly	2
F	1210-1-345	Brake/Steer Pedal, Ft. End	1
H	1210-1-346	Brake/Steer Pedal, Hd. End	1
J	(Page 17)	Brake Cam Assembly	2
K	26-8	Roll Pin	1
L	715-1-94	Compression Spring	2
M	21-50	Set Screw	2
N	715-1-161	Fifth Wheel Cam	1
P	715-1-11	Brake Cushion	4
R	946-1-116	Brake Bar Bushing	4
T	23-25	Self-Tapping Screw	2
Y	16-49	Flexlock Nut	1
Z	715-1-337	Fifth Wheel Plate Ass'y	1
AA	715-1-231	Brake/Steer Rod Weldment	1
AB	26-261	Clevis Pin	2
AC	715-1-157	Fifth Wheel Bearing	1
AD	715-1-165	Actuator Plate Assembly	1
AF	715-1-136	Fifth Wheel Spring	1
AH	42-20	Collar w/ Set Screw	2
AJ	8-17	Soc. Hd. Shoulder Bolt	1
AK	14-2	Nylon Washer	6
AL	16-16	Nylock Nut	1
AM	715-1-156	Grounding Chain	1
AN	16-2	Fiberlock Nut	2
AP	715-1-217	Fifth Wheel Latch	1
AR	3-20	Hex Hd. Cap Screw	1
AS	(Page 23)	Steering Caster Ass'y	1
AT	(Page 24)	Caster Wheel Ass'y	3
AY	81-219	Bearing	1
AW	26-13	Roll Pin	1
AZ	(Page 25)	Fifth Wheel Ass'y	1
BA	715-1-149	Woodruff Key	1
BB	1000-10-62	Steering Lock Linkage Bar	1
BC	38-211	Spring	1
BD	8-21	Soc. Hd. Shoulder Bolt	1

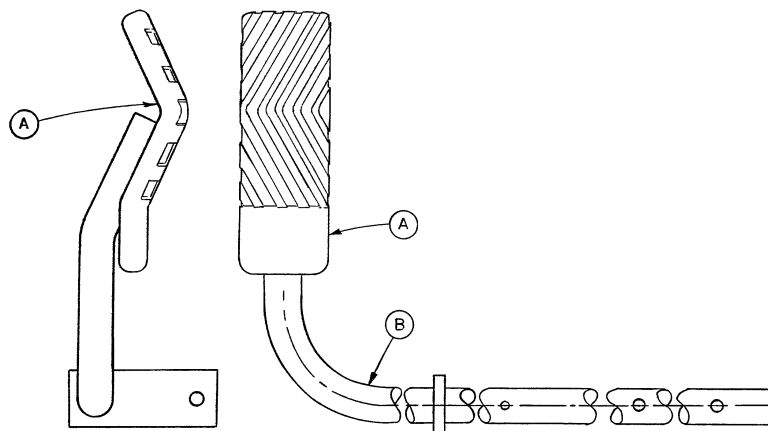


716-1-263 End Control Brake Pedal Ass'y, Foot End



Item	Part No.	Part Name	Qty.
A	716-1-275	Brake Pedal	1
B	716-1-262	Brake Rod Ass'y, Ft. End	1

716-1-269 End Control Brake Pedal Ass'y, Head End

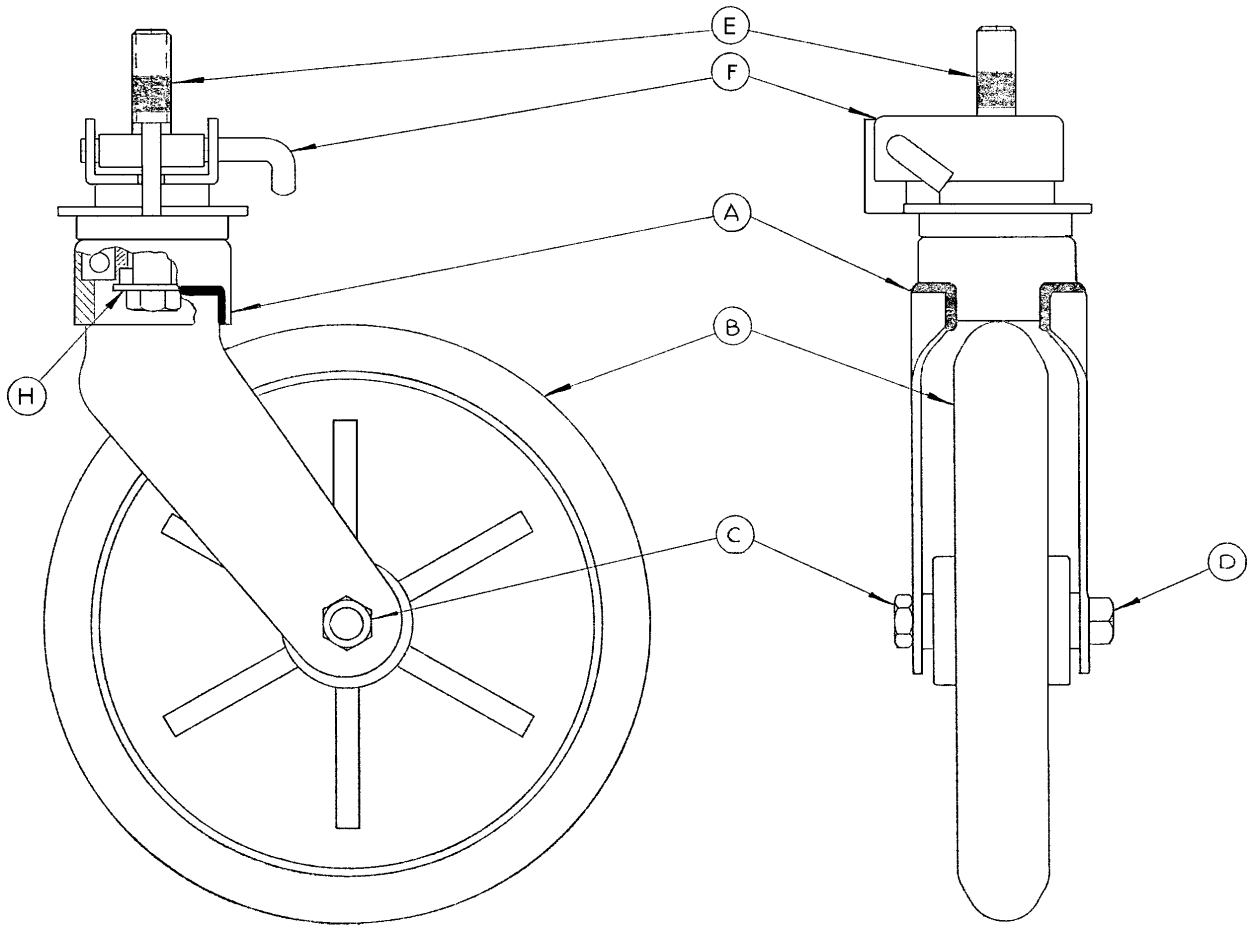


Item	Part No.	Part Name	Qty.
A	716-1-275	Brake Pedal	1
B	716-1-267	Brake Rod Ass'y, Welded	1

NOTE

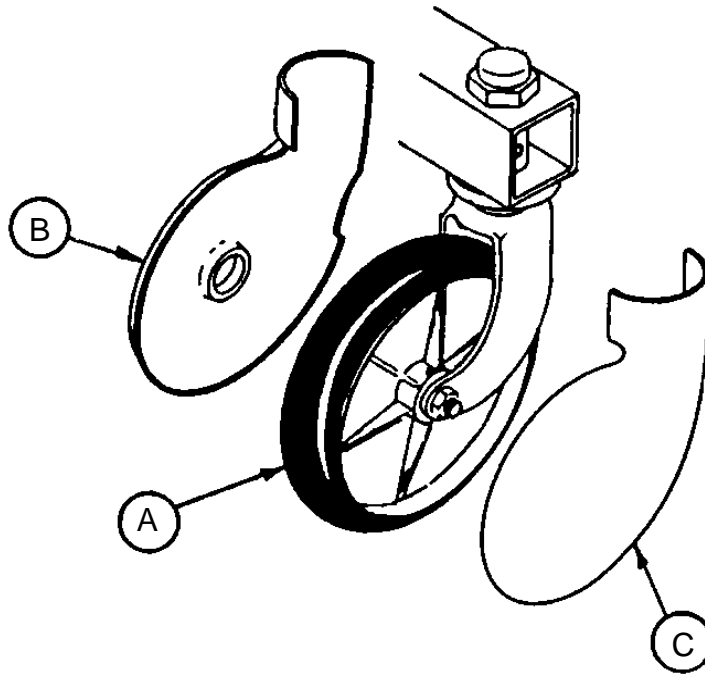
Apply plastic adhesive to the mating surfaces of item A prior to assembly.

715-2-21 Caster Assembly with Steerlock



Item	Part No.	Part Name	Qty.
A	700-10-50	Steer Lock Caster Weldment	1
B	715-2-25	Caster Wheel	1
C	16-60	Hex Nut	1
D	3-99	Hex Bolt	1
E	715-3-96	Hex Bolt	1
F	1000-59-10	Latch Assembly	1
H	11-310	Flat Washer	1

Caster and Caster Cover Replacement Kits



Item	Part No.	Part Name	Qty.
A	715-2-20	Caster Assembly	1
B	715-1-266	Caster Cover, Left	1
C	715-1-265	Caster Cover, Right	1

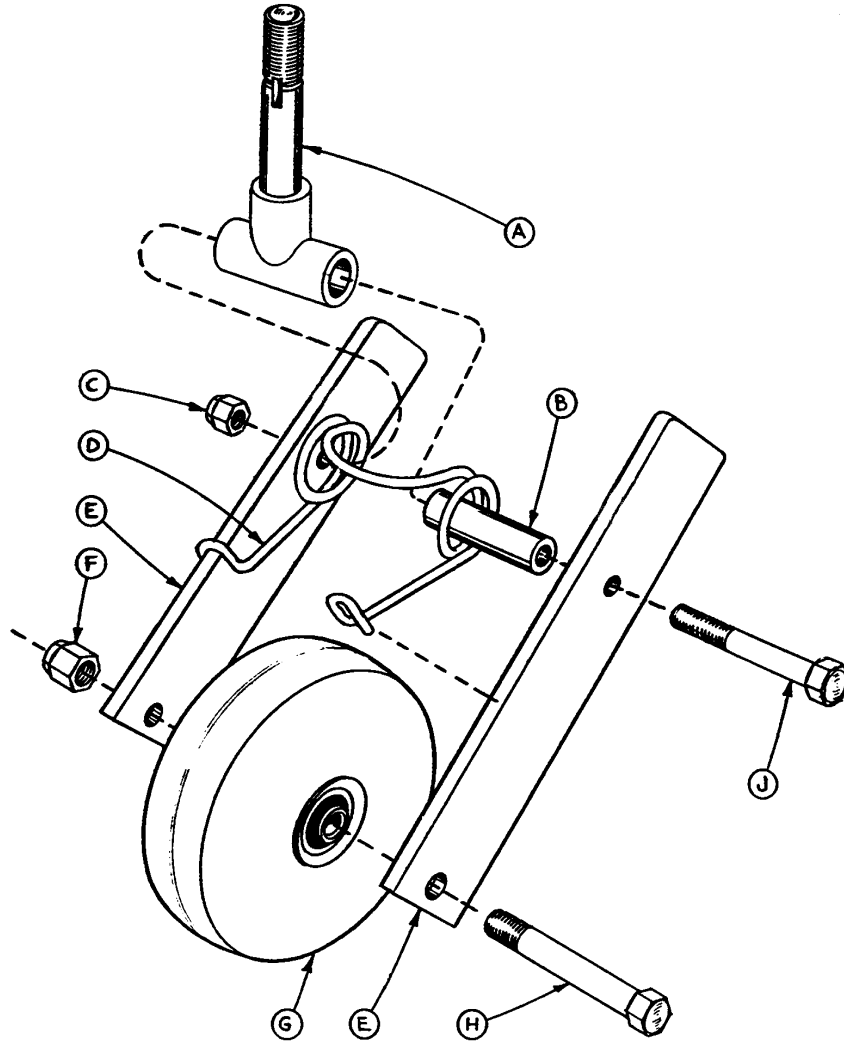
P/N 715-259-400 – Kit to replace 4 standard caster assemblies with necessary hardware – no caster covers.

P/N 715-269-400 – Kit to replace 3 standard caster assemblies and 1 steerlock caster with necessary hardware – no caster covers.

P/N 715-259-100 – Kit to replace 1 standard caster assembly with necessary hardware – no caster covers.

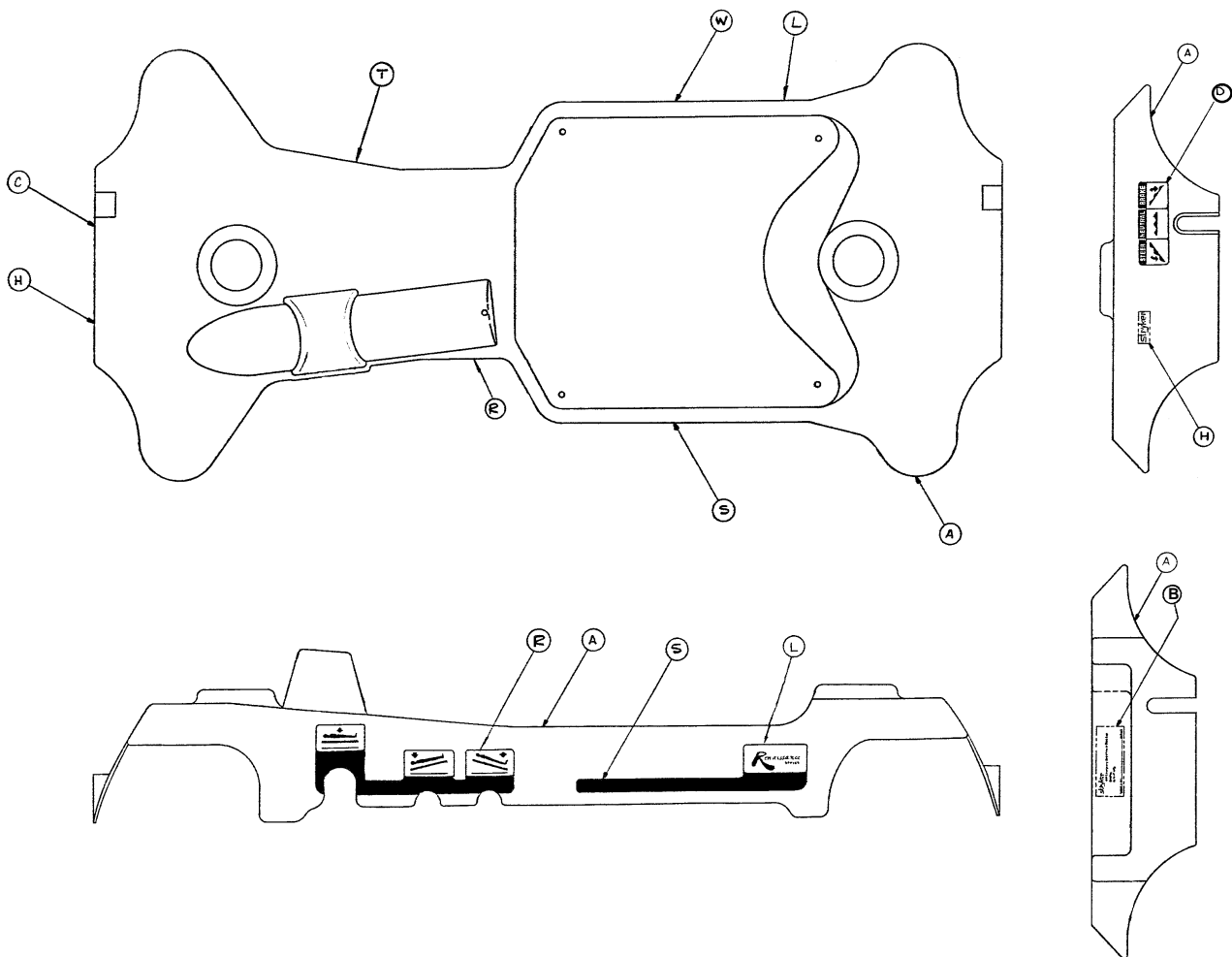
P/N 1010-56-200 – Kit to replace both caster covers on all four wheels.

715-1-25 Fifth Wheel Assembly



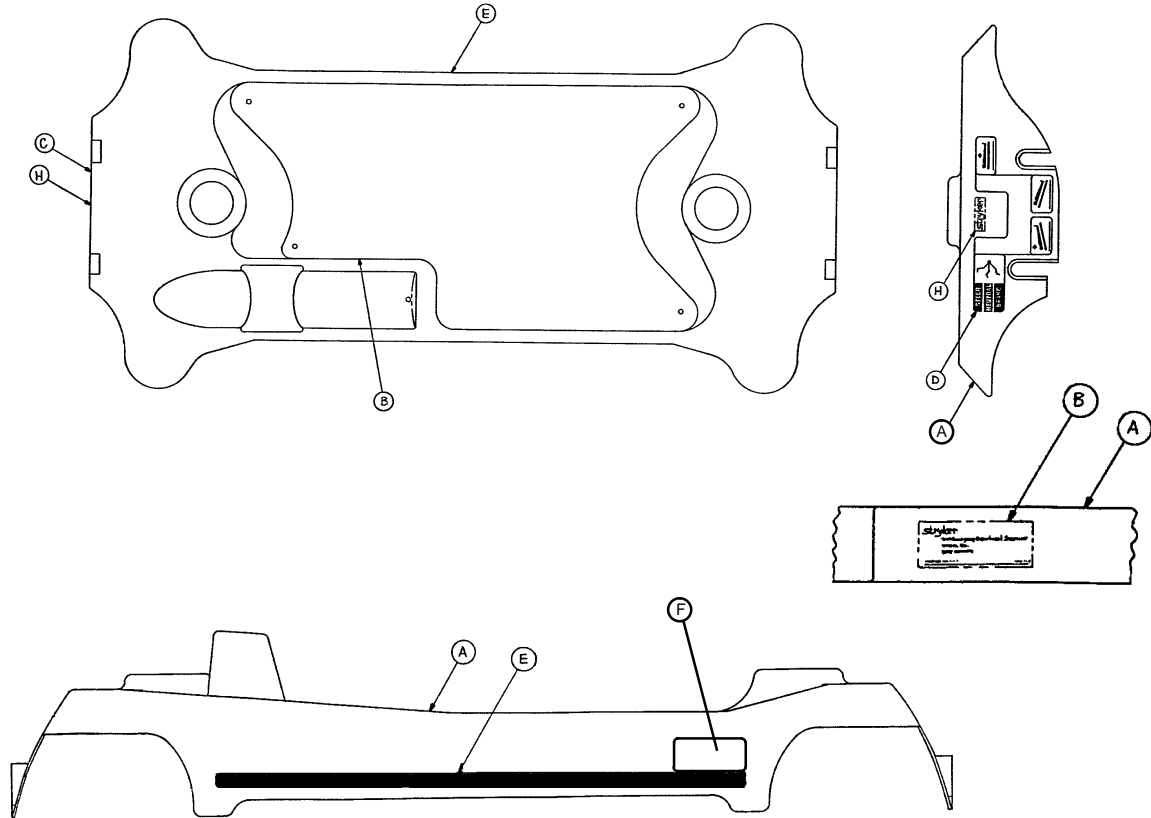
Item	Part No.	Part Name	Qty.
A	715-1-339	Fifth Wheel Pivot Assembly	1
B	715-1-17	Fifth Wheel Bushing	1
C	16-11	Flexlock Nut	1
D	715-1-15	Spring	1
E	715-1-13	Fifth Wheel Bracket	2
F	16-12	Flexlock Nut	1
G	390-1-54	Wheel	1
H	3-31	Hex Head Cap Screw	1
J	3-82	Hex Head Cap Screw	1

Side Control Base Hood Labeling Assembly



Item	Part Number	Part Name	Qty
A	(page 33)	Hood Assembly	1
B	1026-1-17	Specification Label	1
C	741-1-145	Brake/Steer Label, Head	1
D	741-1-146	Brake/Steer Label, Foot	1
H	946-1-60	Stryker Logo Label	2
L	1010-1-50	Renaissance Series Logo Label	2
R	1010-700-11	Right Side Control Label	1
S	1010-700-13	Right Side Strip Label	1
T	1010-700-12	Left Side Control Label	1
W	1010-700-14	Left Side Strip Label	1

End Control Base Hood Labeling Assembly

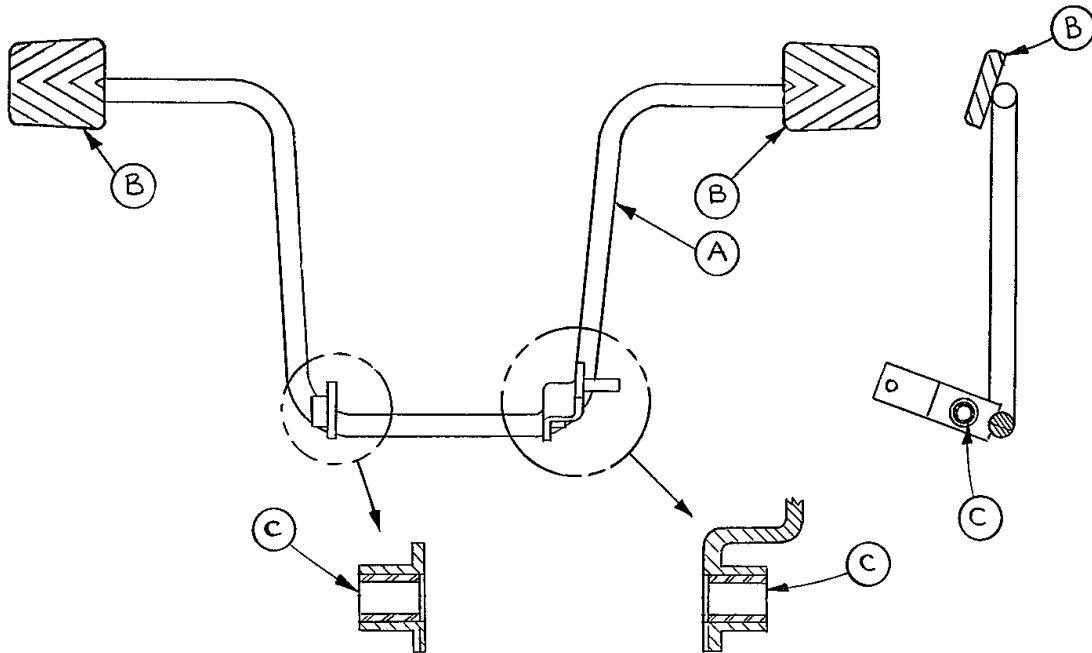


Item	Part No.	Part Name	Qty
A	(page 37)	Hood Assembly	1
B	1026-1-17	Specification Label	1
C	1010-800-11	Brake/Steer Label, Head	1
D	1010-800-12	Brake/Steer Label, Foot	1
E	1010-800-13	Side Strip Label	2
F	1010-1-50	Renaissance Series Logo Label	2
H	946-1-60	Stryker Logo Label	2

715-1-260 Side Control Base Assembly (with Jacks)

Item	Part No.	Part Name	Qty.
A	29-7	Dual Lock	2
B	(Page 39.1)	Jack Assembly	2
C	715-1-55	Jack Base Mounting Plate	4
D	3-62	Hex Hd. Cap Screw	8
E	11-3	Flat Washer	12
F	16-36	Nylock Hex Nut	16
H	715-1-192	Jack Support	2
J	3-85	Hex Hd. Cap Screw	8
L	715-1-193	Jack Support Clamp	2
M	13-38	Ext. Tooth Lock Washer	4
P	29-9	Dual Lock	2
R	763-1-16	Spring Holder	1
S	38-246	Jack Spring	1
T	715-1-133	Collar	1
W	715-1-27	Pump Connect. Rod Ass'y	1
Y	4-146	Hex Socket Hd. Cap Screw	2
Z	16-48	Nylock Hex Nut	2
AA	715-1-333	Release Rod Stop Sleeve	2
AB	715-1-346	Release Paddle	2
AC	21-50	Hex Socket Set Screw	2
AD	715-1-40	Release Rod Ass'y, Ft. End	1
AE	42-13	Shaft Collar w/ Set Screw	2
AF	52-245	Nyliner	2
AH	14-4	Nylon Washer	4
AJ	38-234	Compression Spring	2
AK	(Page 33)	Hood	1
AL	27-4	Cotter Pin	3
AM	715-1-187	Rel. Pedal Sleeve Ass'y	2
AR	4-85	Soc. Hd. Cap Screw	4
AS	16-3	Fiberlock Nut	4
AT	715-1-214	Connector Link, Mach'd	1
AW	(Page 30)	Pedal Base Assembly	1
AY	715-1-92	Pump Pedal Shaft	1
AZ	715-1-134	Bellows	2
BA	715-1-46	Rel. Rod Ass'y, Hd. End	1
BC	14-9	Nylon Washer	8
BD	715-1-140	Raufilam Braid Tubing	1
BF	(Page 31)	Pedal Base Ass'y, Hd. Left	2
BH	(Page 32)	Pedal Base Ass'y, Hd. Right	2
BJ	3-3	Hex Hd. Cap Screw	2
BK	15-11	Fiberlock Nut	2
BL	11-53	Washer	8
BM	21-22	Set Screw	2
BN	27-7	Cotter Pin	2

715-1-108 Pedal Base Assembly, Pump

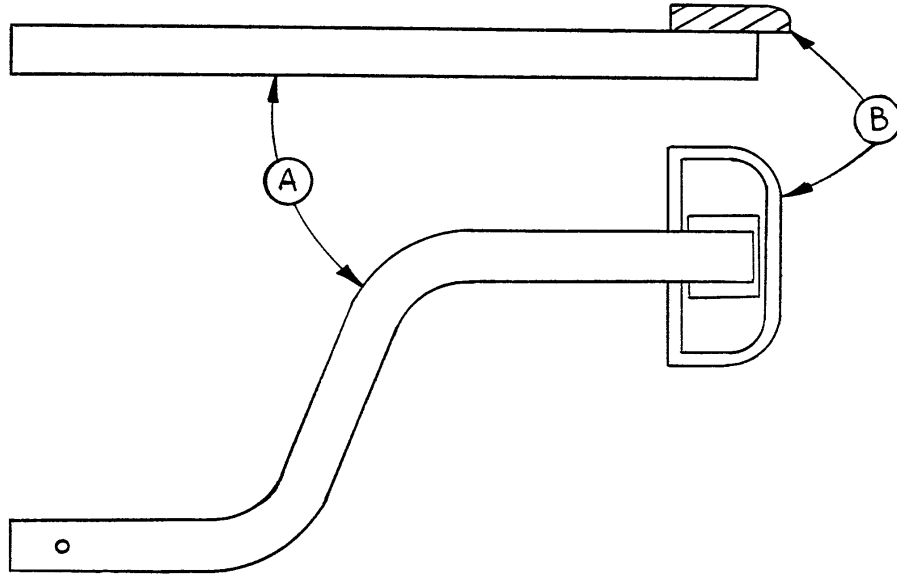


Item	Part No.	Part Name	Qty.
A	715-1-83	Pedal Ass'y Weldm't, Pump	1
B	715-1-126	Side Control Pedal Pad	2
C	81-44	Bearing, Bronze	2

NOTE

Apply plastic adhesive to the mating surfaces of item B prior to assembly.

715-1-109 Pedal Base Assembly, Head End, Left

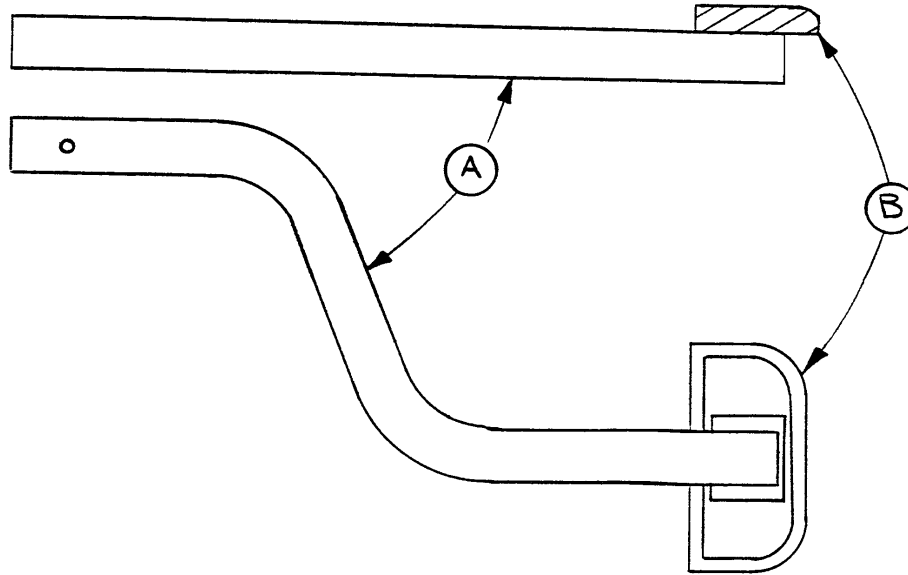


Item	Part No.	Part Name	Qty.
A	715-1-98	Release Ped. Wldmt., Hd. Lt.	1
B	721-40-25	Pedal	1

NOTE

Apply plastic adhesive to the mating surfaces of item B prior to assembly.

715-1-110 Pedal Base Assembly, Head End, Right

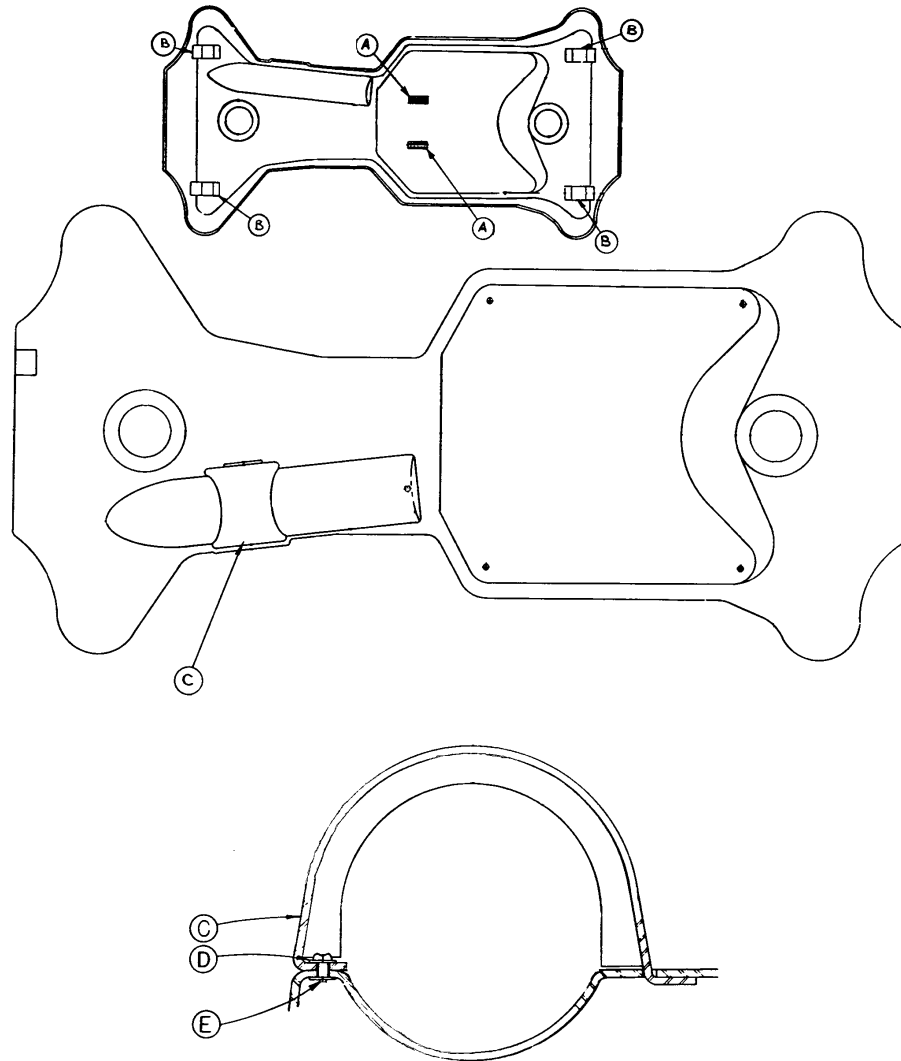


Item	Part No.	Part Name	Qty.
A	715-1-97	Release Pedal Weldment	1
B	721-40-25	Pedal	1

NOTE

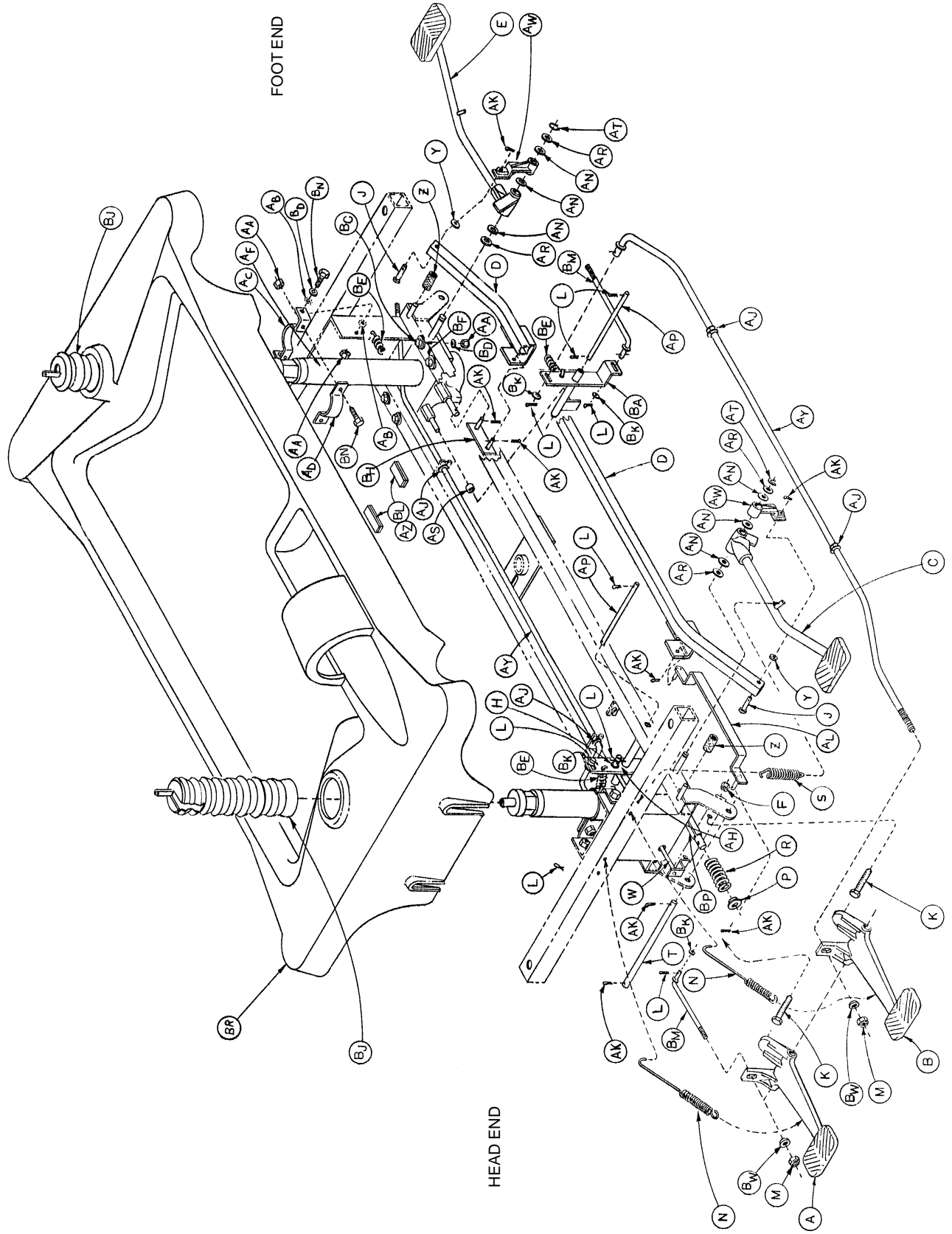
Apply plastic adhesive to the mating surfaces of item B prior to assembly.

715-1-135 Side Control Base Hood Assembly



Item	Part No.	Part Name	Qty.
A	715-1-153	Hood Spacer	2
B	715-1-151	Foam Hood Mount	4
C	715-1-176	Oxygen Bottle Retainer	1
D	11-16	Washer	2
E	25-88	Pop Rivet	2

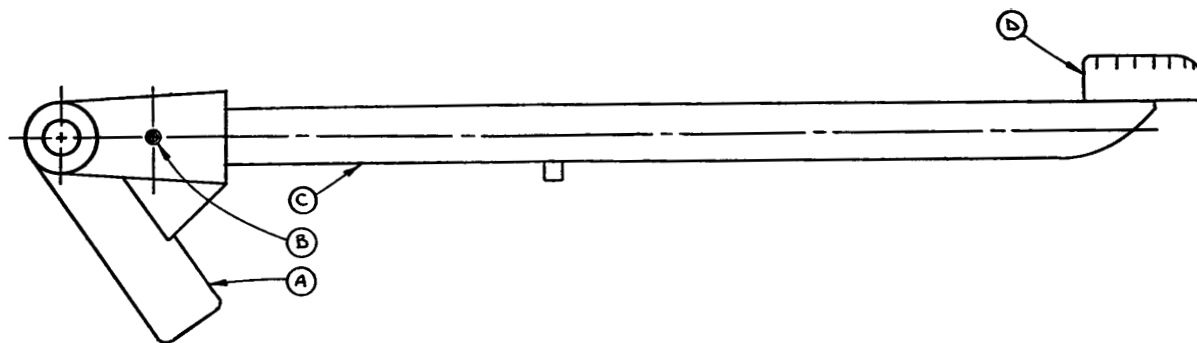
716-1-270 End Control Base Assembly (with Jacks)



716-1-270 End Control Base Assembly (with Jacks)

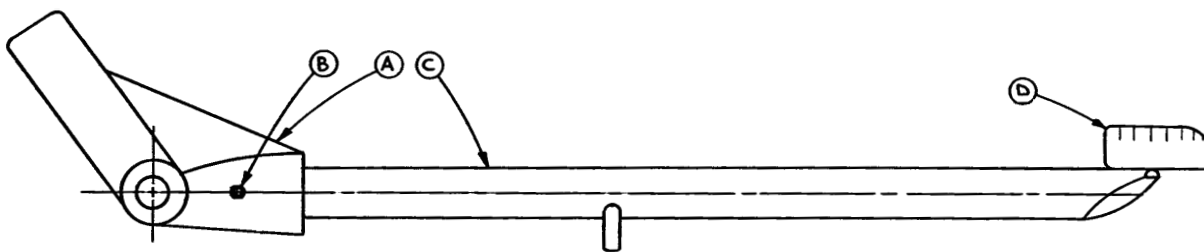
Item	Part No.	Part Name	Qty.
A	716-1-293	Rel. Pedal, Hd. Lt. & Ft. Rt.	2
B	716-1-294	Rel. Pedal, Hd. Rt. & Ft. Lt.	2
C	(Page 36)	Pump Pedal Ass'y, Head	1
D	716-1-115	Pump Conn. Rod Ass'y	1
E	(Page 36)	Pump Pedal Ass'y, Foot	1
F	15-11	Hex Jam Nut	4
H	14-3	Washer	2
J	26-195	Clevis Pin	2
K	3-5	Hex Head Cap Screw	4
L	27-4	Cotter Pin	10
M	16-16	Nylock Nut	4
N	38-235	Spring	4
P	715-1-133	Spring Collar	1
R	763-1-15	Spring	1
S	38-251	Spring	2
T	716-1-61	Pedal Shaft	2
W	716-1-112	Rel. Rod Wldmt., Hd. Lt.	1
Y	14-9	Washer	2
Z	715-1-140	PVC Tubing	2
AA	16-36	Nylock Hex Nut	16
AB	13-38	Ext. Tooth Lock Washer	4
AC	715-1-192	Jack Support	2
AD	715-1-193	Jack Clamp	2
AF	(Page 39.1)	Jack Assembly	2
AH	716-1-119	Pivot Assembly, Head End	1
AJ	52-245	Nyliner	3
AK	27-7	Cotter Pin	10
AL	716-1-109	Pump Link Bar Wldmt., Hd.	1
AN	14-7	Nylon Flat Washer	6
AP	716-1-15	Release Pivot Bar	2
AR	11-13	Flat Washer	4
AS	715-1-333	Release Rod Stop Sleeve	2
AT	28-97	Snap Ring	2
AW	716-1-281	Pump Idler Link	2
AY	716-1-71	Release Rod Ass'y	2
AZ	29-7	Dual Lock	2
BA	716-1-52	Pivot Assembly, Foot	1
BC	3-62	Hex Hd. Cap Screw	8
BD	11-3	Washer	12
BE	38-259	Extension Spring	2
BF	11-262	Flat Washer	8
BH	716-1-102	Pump Link Wldmt. Ass'y, Ft.	1
BJ	715-1-134	Bellows	2
BK	14-2	Washer	4
BL	29-9	Dual Lock	2
BM	716-1-75	Release Rod	2
BN	3-85	Hex Hd. Cap Screw	8
BP	763-1-16	Spring Guide	1
BR	(Page 33)	Hood	1
BW	716-1-286	Cam, Release Pedal	4

716-1-292 End Control Pump Pedal Assembly, Head



Item	Part No.	Part Name	Qty.
A	716-1-285	Pump Pivot, Head End	1
B	26-12	Roll Pin	1
C	716-1-290	Pump Ped. Wldmt., Head	1
D	721-40-25	Pedal	1

716-1-288 End Control Pump Pedal Assembly, Foot

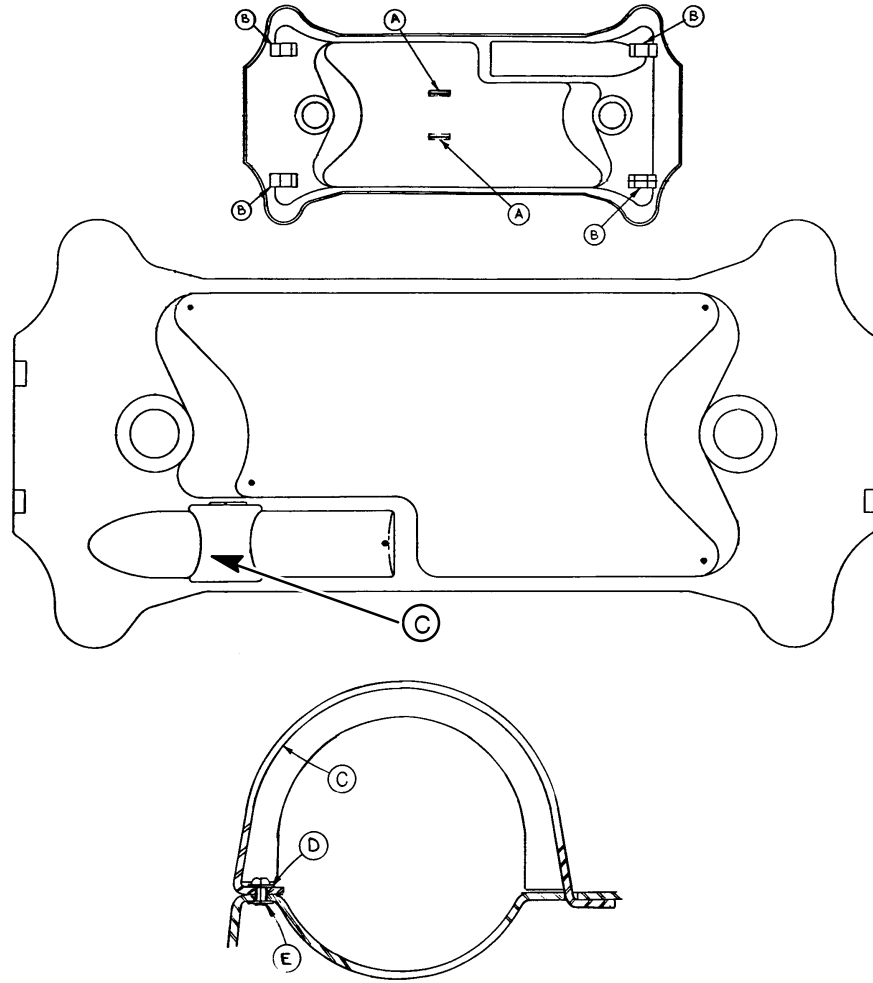


Item	Part No.	Part Name	Qty.
A	716-1-283	Pump Pivot, Foot End	1
B	26-12	Roll Pin	1
C	716-1-289	Pump Ped. Wldmt., Foot	1
D	721-40-25	Pedal	1

NOTE

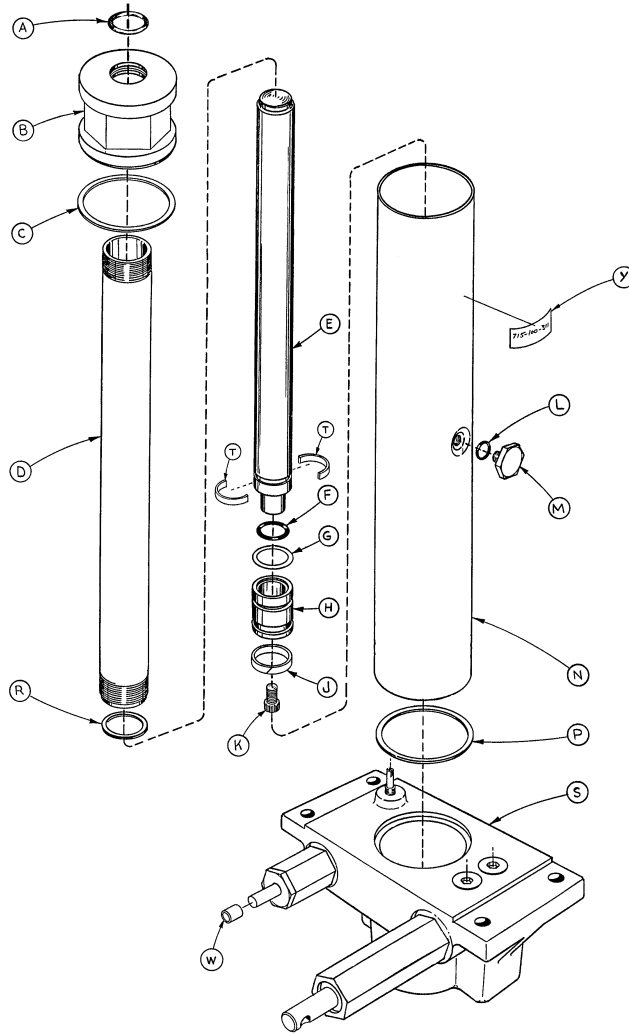
Apply plastic adhesive to the mating surfaces of item D prior to assembly.

716-1-99 End Control Base Hood Assembly



Item	Part No.	Part Name	Qty.
A	716-1-153	Hood Spacer	2
B	715-1-151	Foam Hood Mount	4
C	715-1-176	Oxygen Bottle Retainer	1
D	11-16	Washer	2
E	25-88	Pop Rivet	2

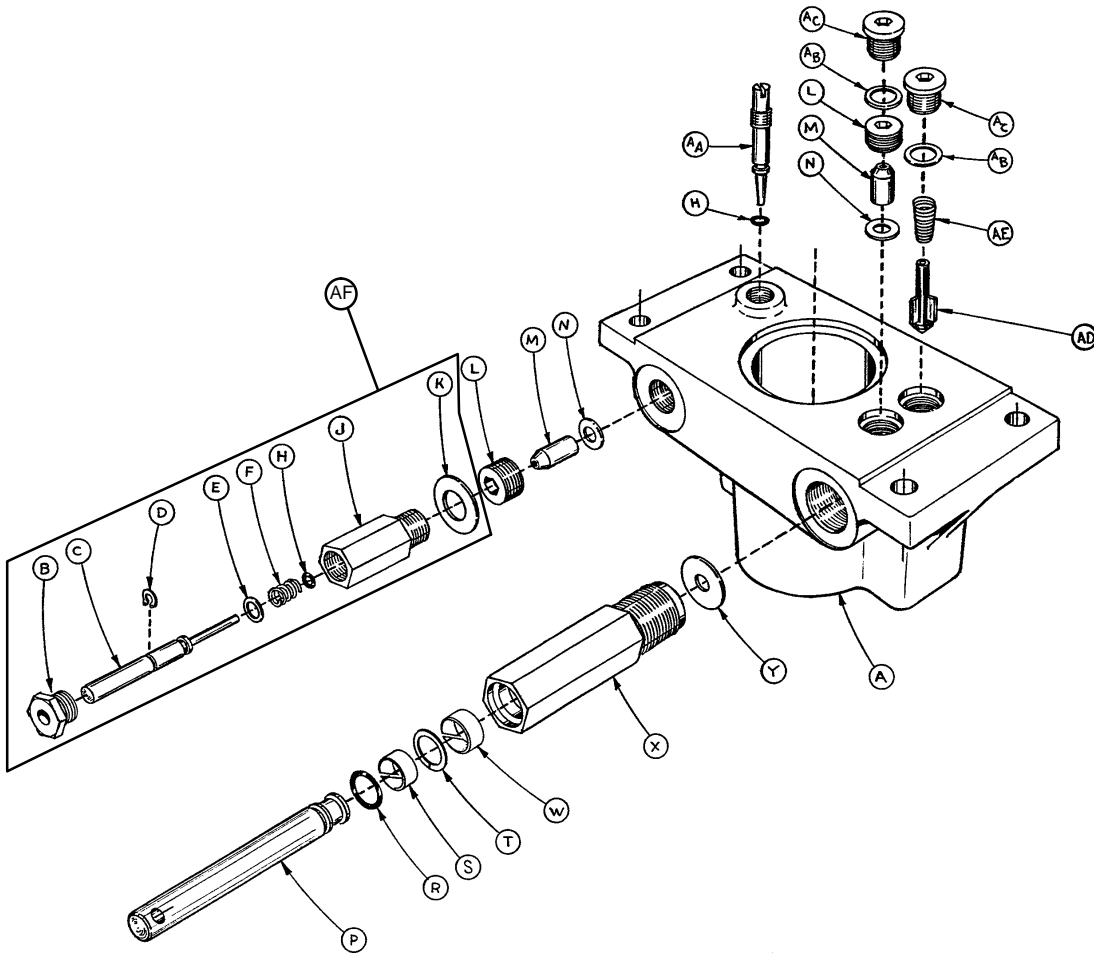
715-1-310* Jack Assembly



Item	Part No.	Part Name	Qty.	Item	Part No.	Part Name	Qty.
A	45-904	O-Ring	1	L	45-110	O-Ring	1
B	715-1-340	Cap Assembly	1	M	388-1-38	Plug	1
C	390-1-243	Gasket	1	N	715-1-322	Reservoir	1
D	715-1-323	Actuator Cylinder	1	P	390-1-244	Gasket	1
E	715-1-325	Actuator	1	R	390-1-238	Gasket, Actuator	1
F	45-14	O-Ring	1	S	(Page 39)	Jack Base Assembly	1
G	926-20-161	Parker Packing	1	T	390-2-139	Retaining Collar	2
H	715-1-331	Piston End	1	W	715-1-333	Rel. Valve Stop Sleeve	1
J	926-20-162	Wear Ring	1	Y	715-100-311	Label	1
K	4-14	Soc. Hd. Cap Screw	1				

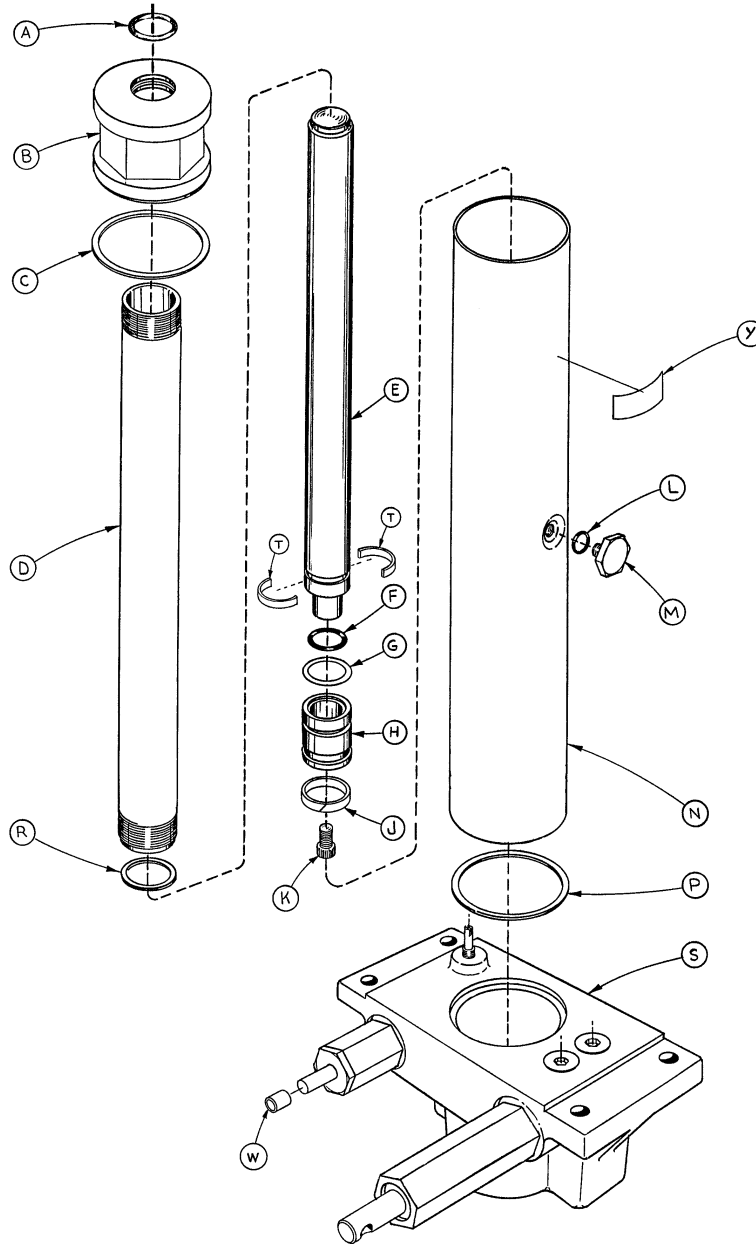
*Replacement Part Number 715-100-310.

715-1-300 Jack Base Assembly



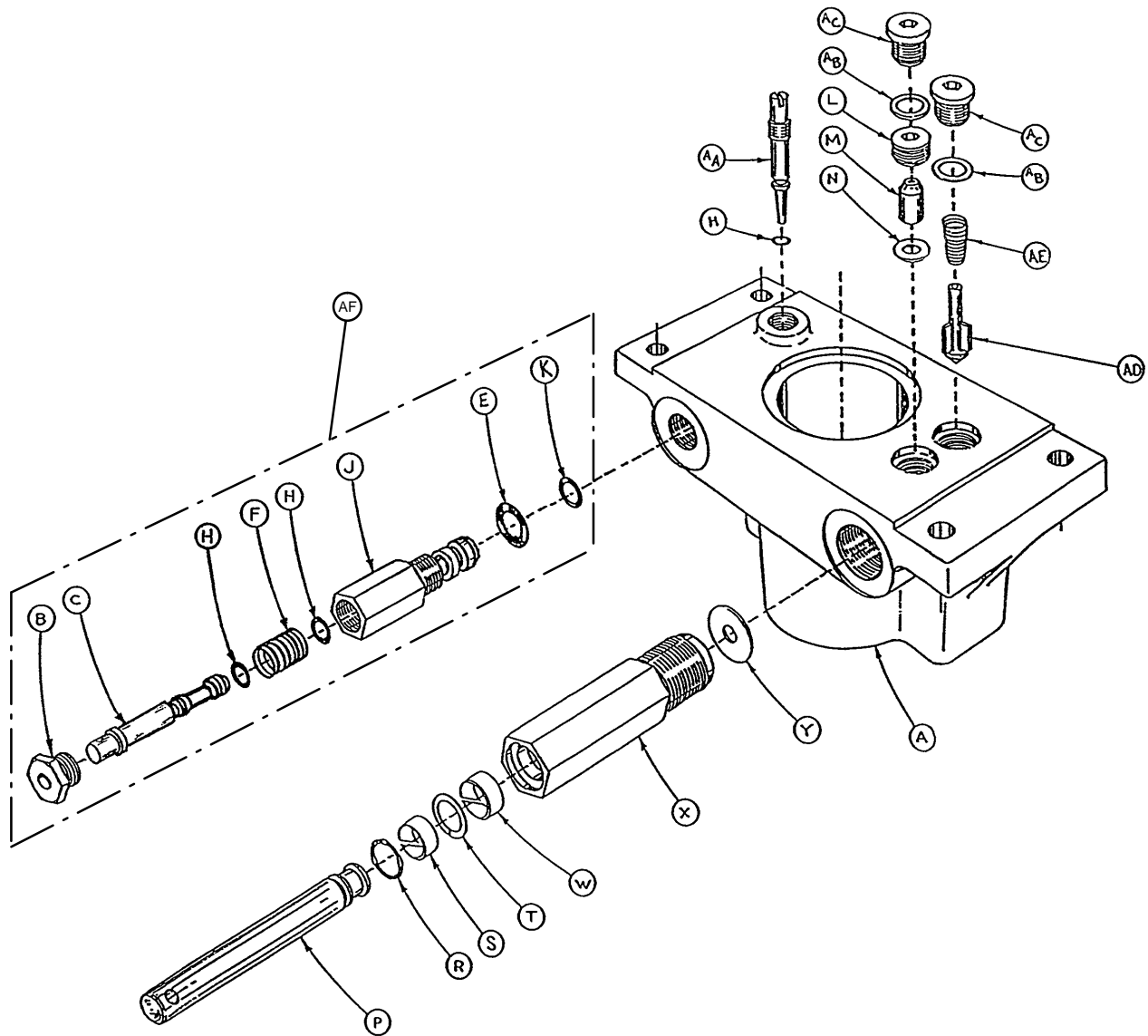
Item	Part No.	Part Name	Qty.
A	715-1-312	Base, Machined	1
B	715-1-308	Base Plug	1
C	715-1-306	Pin	1
D	28-8	Snap Ring	1
E	390-2-176	Washer	1
F	38-231	Compression Spring	1
H	45-6	O-Ring	2
J	715-1-305	Pin Housing	1
K	715-1-330	Housing Gasket	1
L	715-1-309	Valve Plug	2
M	926-20-153	Check Valve	2
N	926-20-154	Seal	2
P	715-1-318	Pump Piston	1
R	45-110	O-Ring	1
S	715-1-328	Piston Wear Ring	1
T	14-50	Bearing Retainer	1
W	715-1-327	Cylinder Wear Ring	1
X	715-1-316	Pump Cylinder	1
Y	715-1-329	Pump Seal	1
AA	715-1-307	Needle Valve	1
AB	926-20-156	Seal	2
AC	715-1-301	Base Plug	2
AD	715-1-341	Poppet	1
AE	390-2-134	Conical Comp. Spring	1
AF	715-100-312	Pin Housing Assembly	1

715-270-10 Jack Assembly



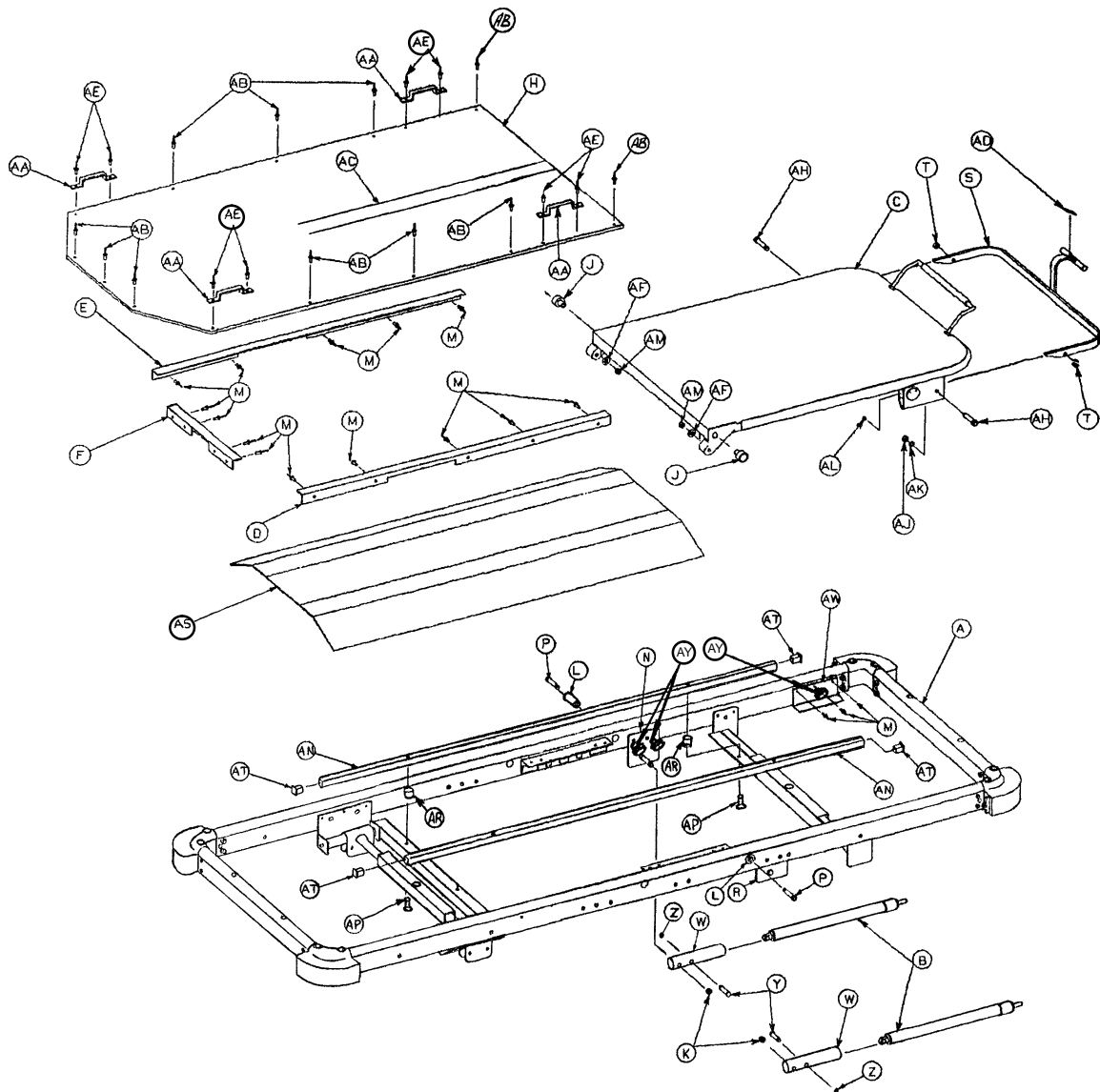
Item	Part No.	Part Name	Qty.	Item	Part No.	Part Name	Qty.
A	45-904	O-Ring	1	L	45-110	O-Ring	1
B	715-1-340	Cap Assembly	1	M	388-1-38	Plug	1
C	390-1-243	Gasket	1	N	715-1-322	Reservoir	1
D	715-1-323	Actuator Cylinder	1	P	390-1-244	Gasket	1
E	715-1-325	Actuator	1	R	390-1-238	Gasket, Actuator	1
F	45-14	O-Ring	1	S	(page 39.2)	Jack Base Assembly	1
G	926-20-161	Parker Packing	1	T	390-2-139	Retaining Collar	2
H	715-1-331	Piston End	1	W	715-1-333	Rel. Valve Stop Sleeve	1
J	926-20-162	Wear Ring	1	Y	715-270-11	Label	1
K	4-14	Soc. Hd. Cap Screw	1				

715-270-5 Jack Base Assembly



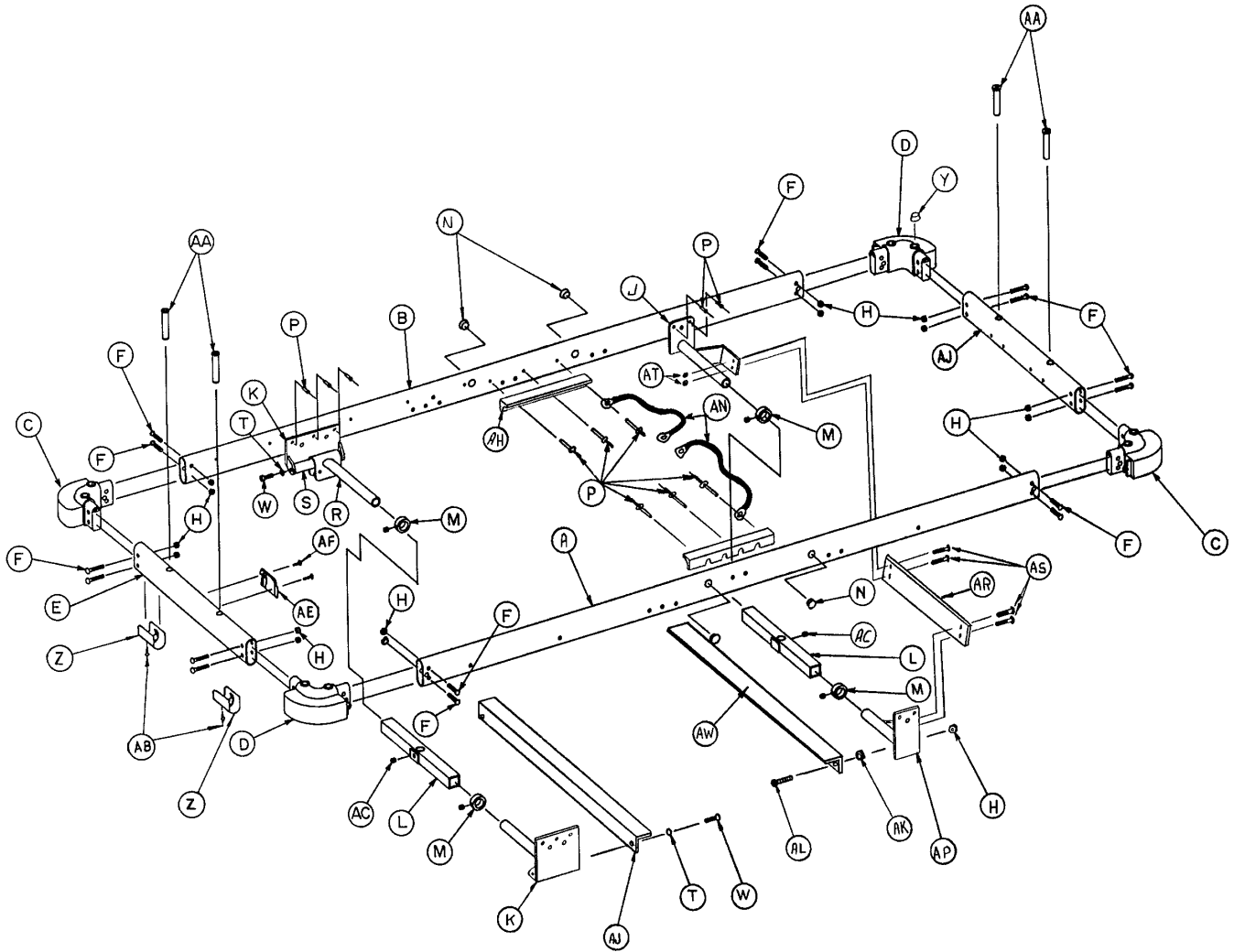
Item	Part No.	Part Name	Qty.	Item	Part No.	Part Name	Qty.
A	1210-70-12	Jack Base	1	R	45-110	O-Ring	1
B	1210-70-13	Base Plug	1	S	715-1-328	Piston Wear Ring	1
C	715-270-1	Pin	1	T	14-50	Bearing Retainer	1
E	45-966	O-Ring	1	W	715-1-327	Cylinder Wear Ring	1
F	38-311	Compression Spring	1	X	715-1-316	Pump Cylinder	1
H	45-006	O-Ring	3	Y	715-1-329	Pump Seal	1
J	715-270-2	Pin Housing	1	AA	715-1-307	Needle Valve	1
K	43-967	O-Ring	1	AB	926-20-156	Seal	2
L	715-1-309	Valve Plug	1	AC	715-1-301	Base Plug	2
M	926-20-153	Check Valve	1	AD	715-1-341	Poppet	1
N	926-20-154	Seal	1	AE	390-2-134	Conical Comp. Spring	1
P	715-1-310	Pump Piston	1	AF	715-270-100	Valve Assembly	1

1026-127-31 Full Length X-Ray Pneu. Fowler Litter



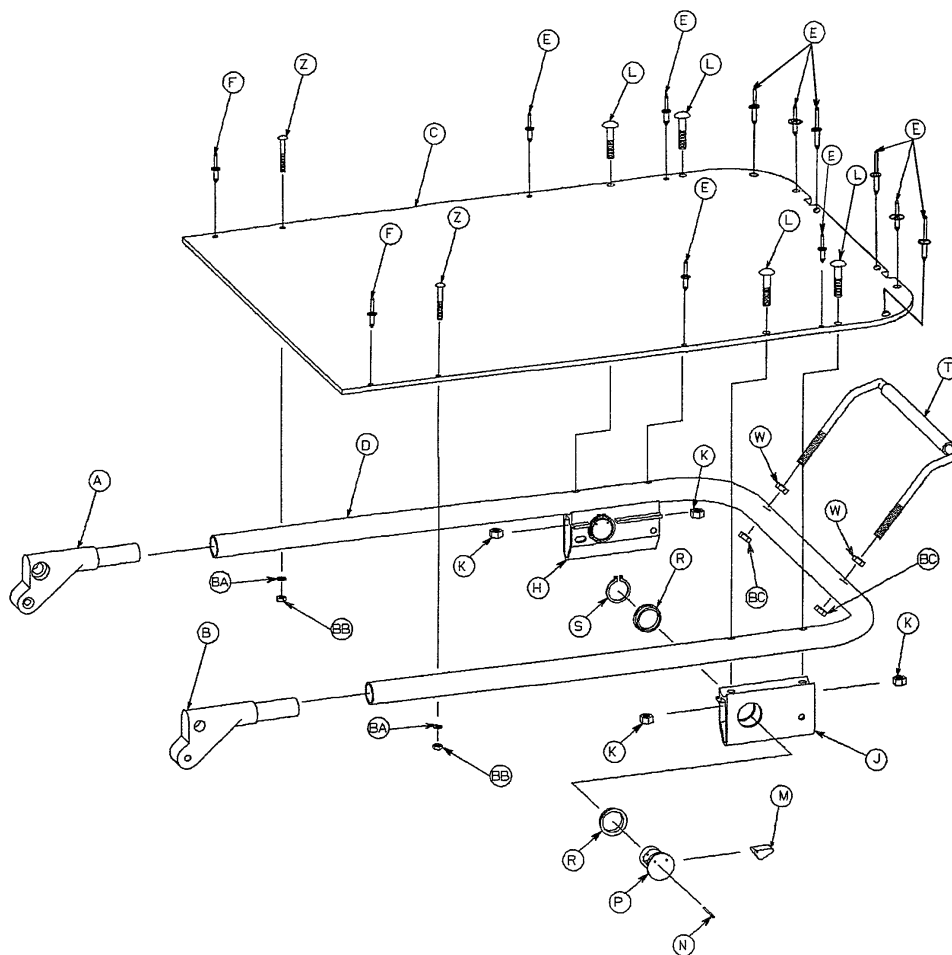
Item	Part No.	Part Name	Qty.	Item	Part No.	Part Name	Qty.
A	(page 41)	Basic Frame Ass'y	1	Z	28-77	Retaining Ring	2
B	1010-31-78	Gas Cylinder	2	AA	393-53-20	Strap Anchor	4
C	(page 42)	Fowler Assembly	1	AB	25-69	Pop Rivet	11
D	946-34-41	Skin Supt. Angle, Lt.	1	AC	7900-1-102	Velcro Pile Tape	25"
E	946-34-42	Skin Supt. Angle, Rt.	1	AD	946-35-50	Label	1
F	946-34-40	Skin Supt. Angle, End	1	AE	25-76	Pop Rivet	8
H	926-128-59	Fiberresin Skin	1	AF	11-108	Flat Washer	2
J	966-34-40	Pivot Sleeve	2	AH	8-30	Shoulder Bolt	2
K	16-35	Nylock Nut	2	AJ	16-2	Nylock Nut	2
L	966-34-41	Pivot Nut	2	AK	11-1	Flat Washer	2
M	25-55	Pop Rivet	20	AL	21-119	Set Screw	2
N	946-35-36	Cyl. Mtg. Ass'y, Rt.	1	AM	16-36	Nylock Nut	2
P	8-31	Shoulder Bolt	2	AN	926-128-50	Roller Rail	2
R	946-35-37	Cyl. Mtg. Ass'y, Lt.	1	AP	3-2	Hex Hd. Cap Screw	4
S	926-35-47	Handle	1	AR	55-8	Threaded Insert	4
T	52-15	Spacer	2	AS	(page 47)	Tray Assembly	1
W	946-35-38	Cylinder Extension	2	AT	37-22	Hole Plug	4
Y	946-35-39	Retention Pin	2	AW	946-35-30	Fowler Supt. Brkt.	2
				AY	946-35-26	Mod. Hex Nut	6

1026-127-15 Basic Frame Assembly



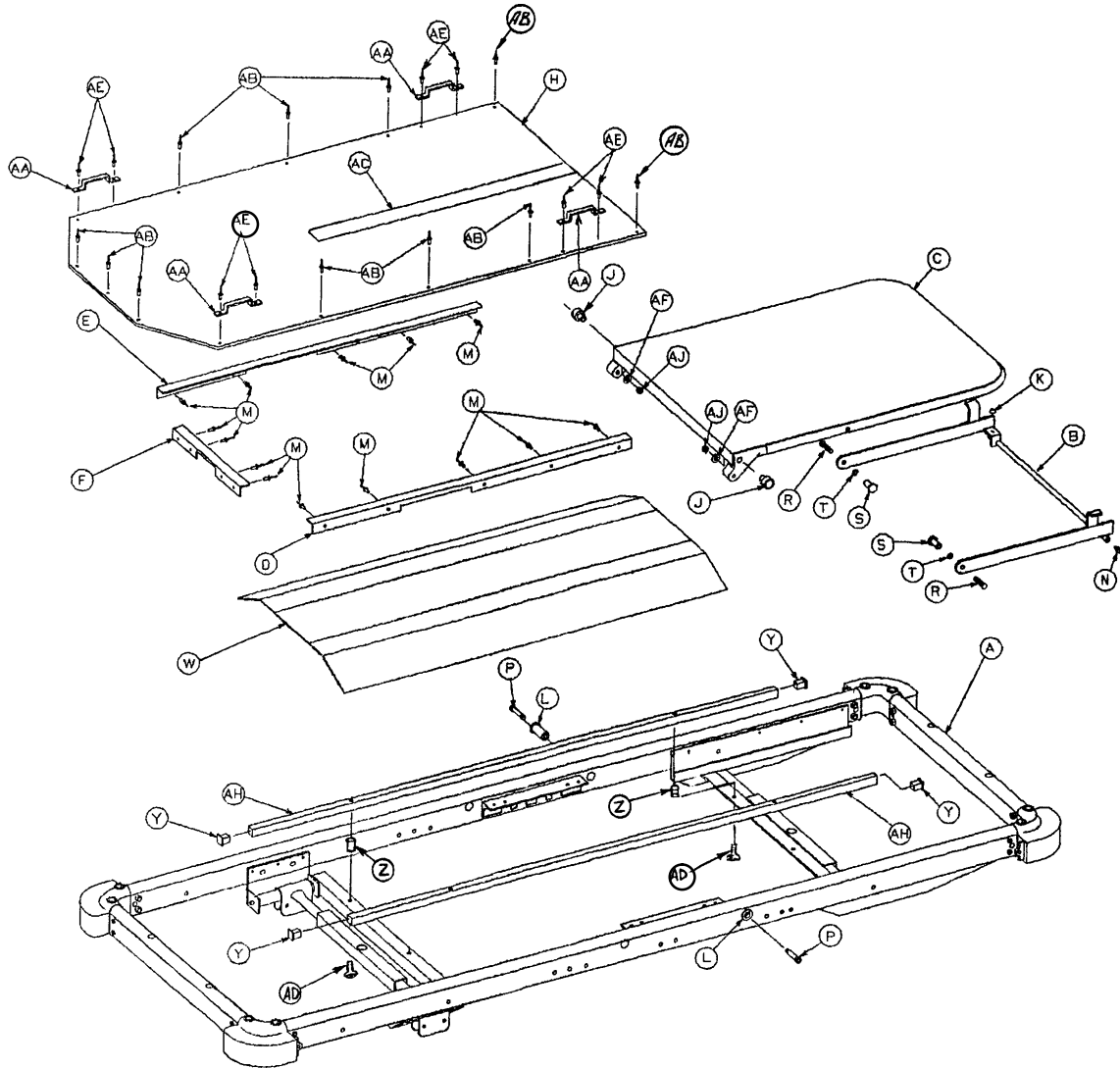
Item	Part No.	Part Name	Qty.	Item	Part No.	Part Name	Qty.
A	946-1-43	Side Tube, Left	1	Z	926-1-162	Oval Insert	2
B	946-1-42	Side Tube, Right	1	AA	946-1-35	Board Support	4
C	946-1-37	Corner, Head End, Left	2	AB	25-55	Pop Rivet	2
D	946-1-38	Corner, Head End, Right	2	AC	46-1	Sq. Hd. Set Screw	2
E	926-1-26	Crosstube	2	AD	926-1-28	Crosstube, Push But.	1
F	4-54	Hex Button Cap Screw	16	AE	946-22-11	Pushbutton Cover	1
H	16-11	Hex Castle Nut	20	AF	23-11	Pan Hd. Mach. Scr.	2
J	1026-127-32	Hd. Standoff Ass'y, Rt.	1	AH	926-1-46	Angle Support	2
K	926-128-42	Foot End Standoff Ass'y	2	AJ	926-128-60	Support Angle	1
L	390-9-13	Top Support Tube Ass'y	2	AK	926-128-43	Spacer	2
M	42-7	Collar Assembly	4	AL	3-9	Hex Hd. Cap Screw	2
N	37-30	Hole Plug	4	AN	946-1-285	Ground Cable	2
P	25-50	Pop Rivet	16	AP	1026-127-33	Hd. Standoff Ass'y, Lt	1
R	946-1-36	Supt. Tube & Roller Ass'y	2	AR	(page 46)	Trend. Limiter Ass'y	1
S	938-1-155	Carrier Tube Support Bar	2	AS	3-15	Hex Hd. Cap Screw	4
T	11-3	Washer	6	AT	16-28	Nylock Nut	4
W	4-51	Soc. Head Cap Screw	4	AW	1026-128-60	Support Angle	1
Y	30-21	Rubber Cap	4				

926-127-55 Pneumatic Fowler Assembly



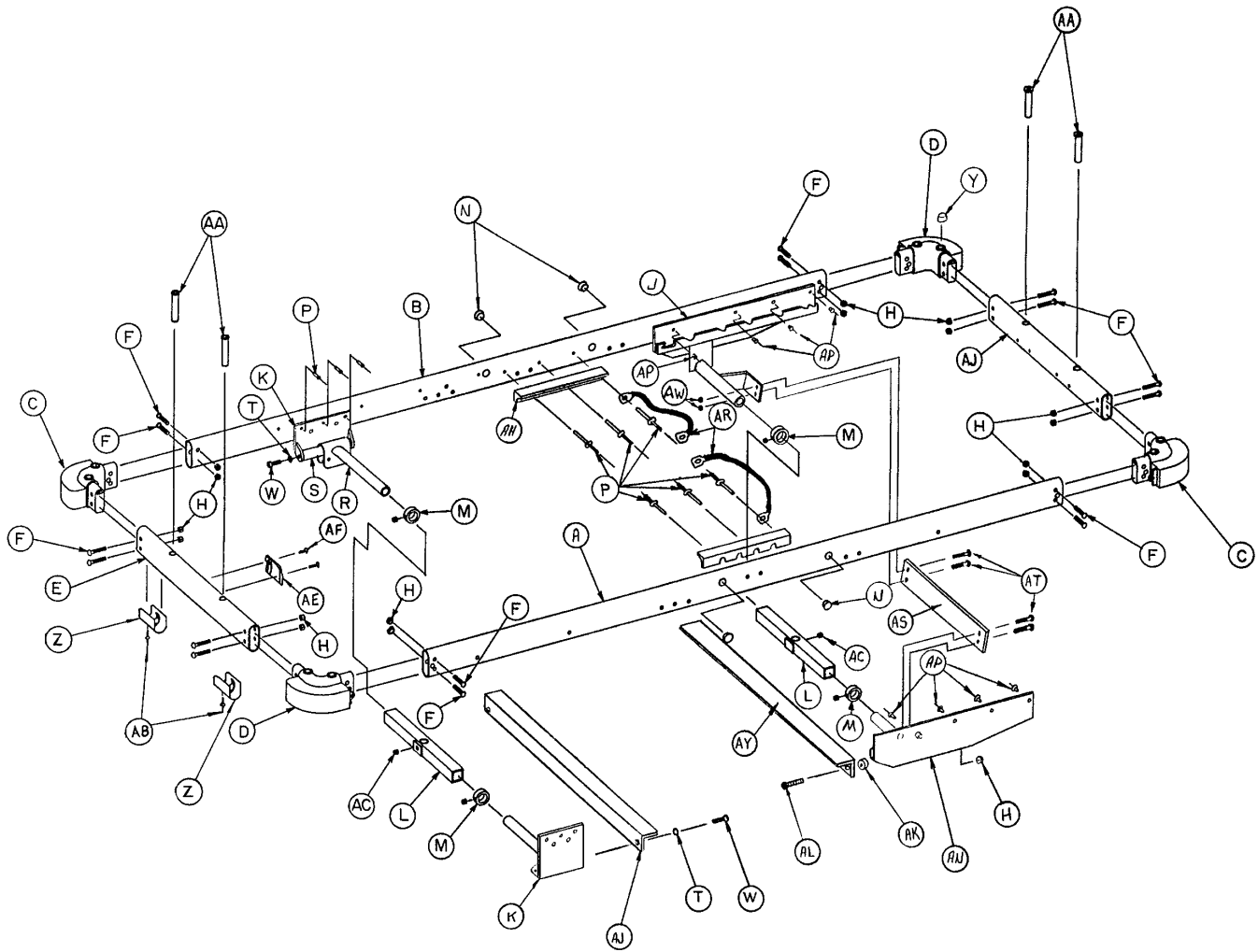
Item	Part No.	Part Name	Qty.
A	926-32-28	Fowler Plug, Right	1
B	926-32-27	Fowler Plug, Left	1
C	926-133-21	Fowler Skin, Aluminum	1
D	926-33-60	Fowler Tube	1
E	25-77	Pop Rivet	10
F	25-69	Pop Rivet	2
H	946-35-21	Yoke Housing, Right	1
J	946-35-22	Yoke Housing, Left	1
K	16-36	Nylock Hex Nut	4
L	7-27	Truss Hd. Mach. Screw	4
M	946-35-23	Cam	2
N	26-137	Groove Pin	2
P	946-35-24	Yoke	2
R	946-35-25	Liner	4
S	28-76	Retaining Ring	2
T	946-35-43	Handle Assembly	1
W	15-27	Hex Jam Nut	2
Z	2-36	Round Hd. Mach. Screw	2
BA	11-1	Flat Washer	2
BB	16-3	Nylock Nut	2
BC	16-35	Nylock Nut	2

1026-128-32 Full Length X-Ray Manual Fowler Litter



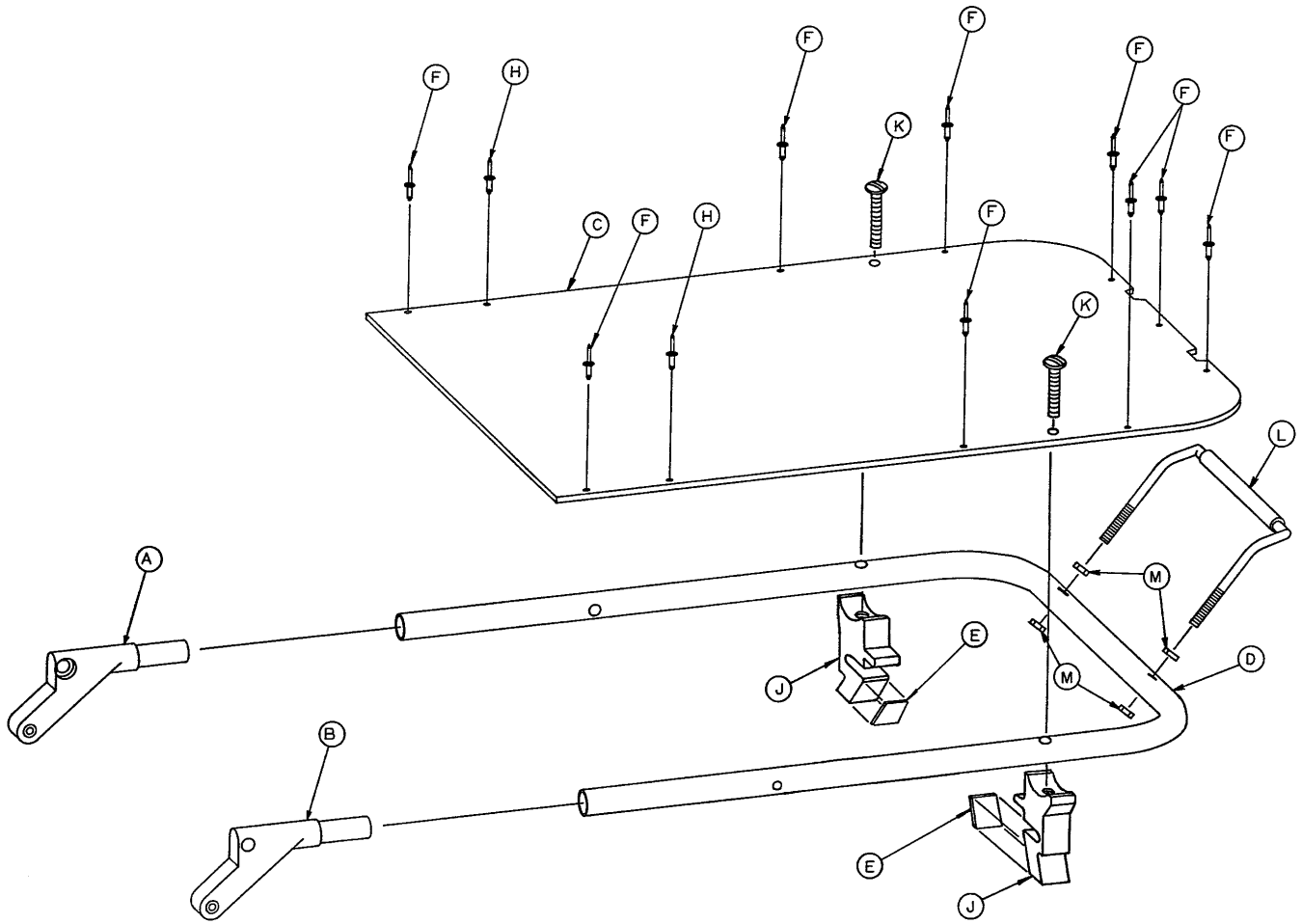
Item	Part No.	Part Name	Qty.	Item	Part No.	Part Name	Qty.
A	(page 44)	Basic Frame Ass'y	1	S	926-32-70	Manual Fowler Nut	2
B	926-332-26	Brace Assembly	1	T	14-19	Flat Washer	2
C	(page 45)	Fowler Assembly	1	W	(page 47)	Tray Assembly	1
D	946-34-41	Skin Supt. Angle, Lt.	1	Y	37-22	Hole Plug	4
E	946-34-42	Skin Supt. Angle, Rt.	1	Z	55-8	Threaded Insert	4
F	946-34-40	Skin Supt. Angle, End	1	AA	393-53-20	Strap Anchor	4
H	926-128-59	Fiberresin Skin	1	AB	25-69	Pop Rivet	11
J	966-34-40	Pivot Sleeve	2	AC	7900-1-102	Velcro Pile Tape	25"
K	650-1-48	Bumper	2	AD	3-2	Hex Hd. Cap Screw	4
L	966-34-41	Pivot Nut	2	AE	25-76	Pop Rivet	8
M	25-55	Pop Rivet	14	AF	11-108	Flat Washer	2
N	946-332-31	Hole Plug	2	AH	926-128-50	Roller Rail	2
P	8-31	Shoulder Bolt	2	AJ	16-36	Nylock Nut	2
R	1-56	Flat Hd. Mach. Screw	2				

1026-128-15 Basic Frame Assembly



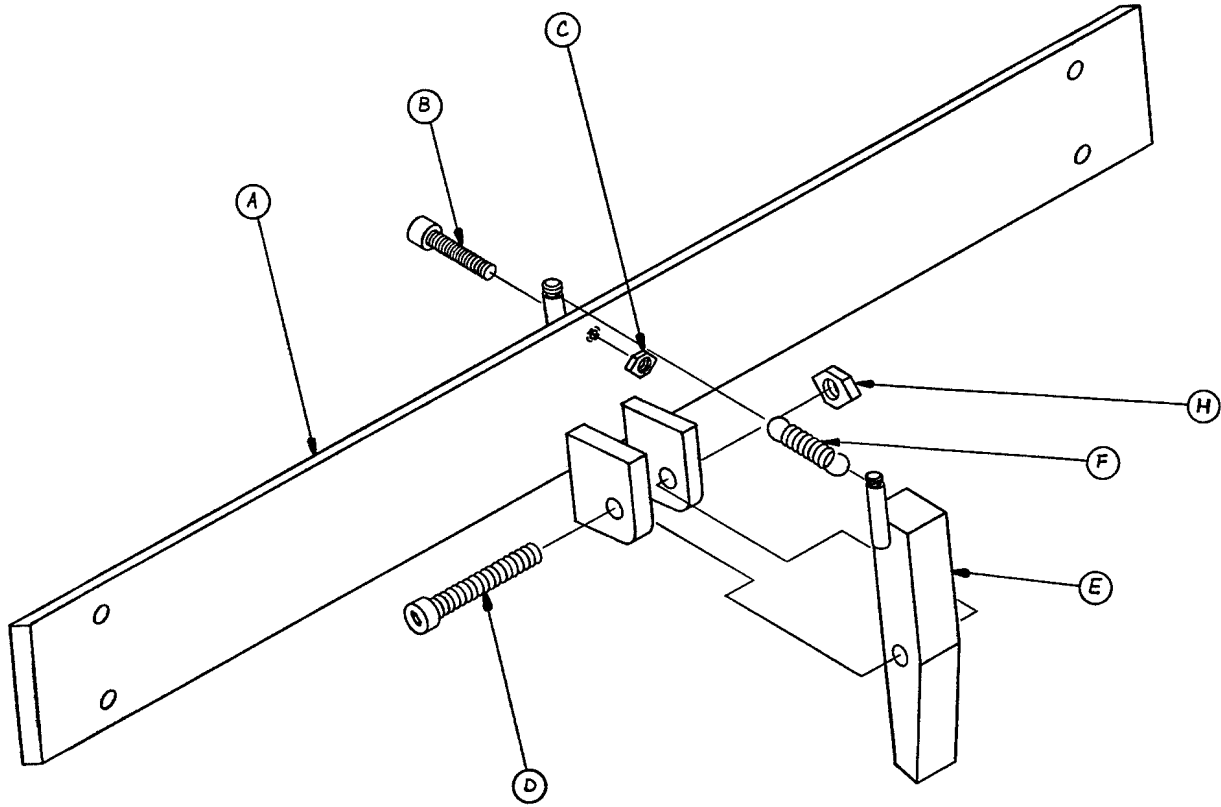
Item	Part No.	Part Name	Qty.	Item	Part No.	Part Name	Qty.
A	946-1-43	Side Tube, Left	1	Z	926-1-162	Oval Insert	2
B	946-1-42	Side Tube, Right	1	AA	946-1-35	Board Support	4
C	946-1-37	Corner, Hd. End, Lt.	2	AB	25-55	Pop Rivet	2
D	946-1-38	Corner, Hd. End, Rt.	2	AC	46-1	Sq. Hd. Set Screw	2
E	926-1-26	Crosstube	2	AD	926-1-28	Crosstube, Push But.	1
F	4-54	Hex But. Cap Screw	16	AE	946-22-11	Push Button Cover	1
H	16-11	Hex Castle Nut	20	AF	23-11	Pan Hd. Mach. Screw	2
J	1026-128-64	Man. Fow. Standoff, Rt.	1	AH	926-1-46	Angle Support	1
K	926-128-42	Foot End Standoff Ass'y	2	AJ	926-128-60	Support Angle	2
L	390-9-13	Top Supt. Tube Ass'y	2	AK	926-128-43	Spacer	2
M	42-7	Collar Assembly	4	AL	3-9	Hex Hd. Cap Screw	2
N	37-30	Hole Plug	4	AN	1026-128-62	Man. Fow. Standoff, Lt.	1
P	25-50	Pop Rivet	16	AP	25-79	Pop Rivet	8
R	946-1-36	Supt. Tube & Roller Ass'y	2	AR	946-1-285	Ground Cable	2
S	938-1-155	Carrier Tube Supt. Bar	2	AS	(page 46)	Trend. Limiter Ass'y	1
T	11-3	Washer	6	AT	3-15	Hex Hd. Cap Screw	4
W	4-71	Soc. Hd. Cap Screw	4	AW	16-28	Nylock Nut	4
Y	30-21	Rubber Cap	4	AY	1026-128-60	Support Angle	1

926-132-55 Manual Fowler Assembly



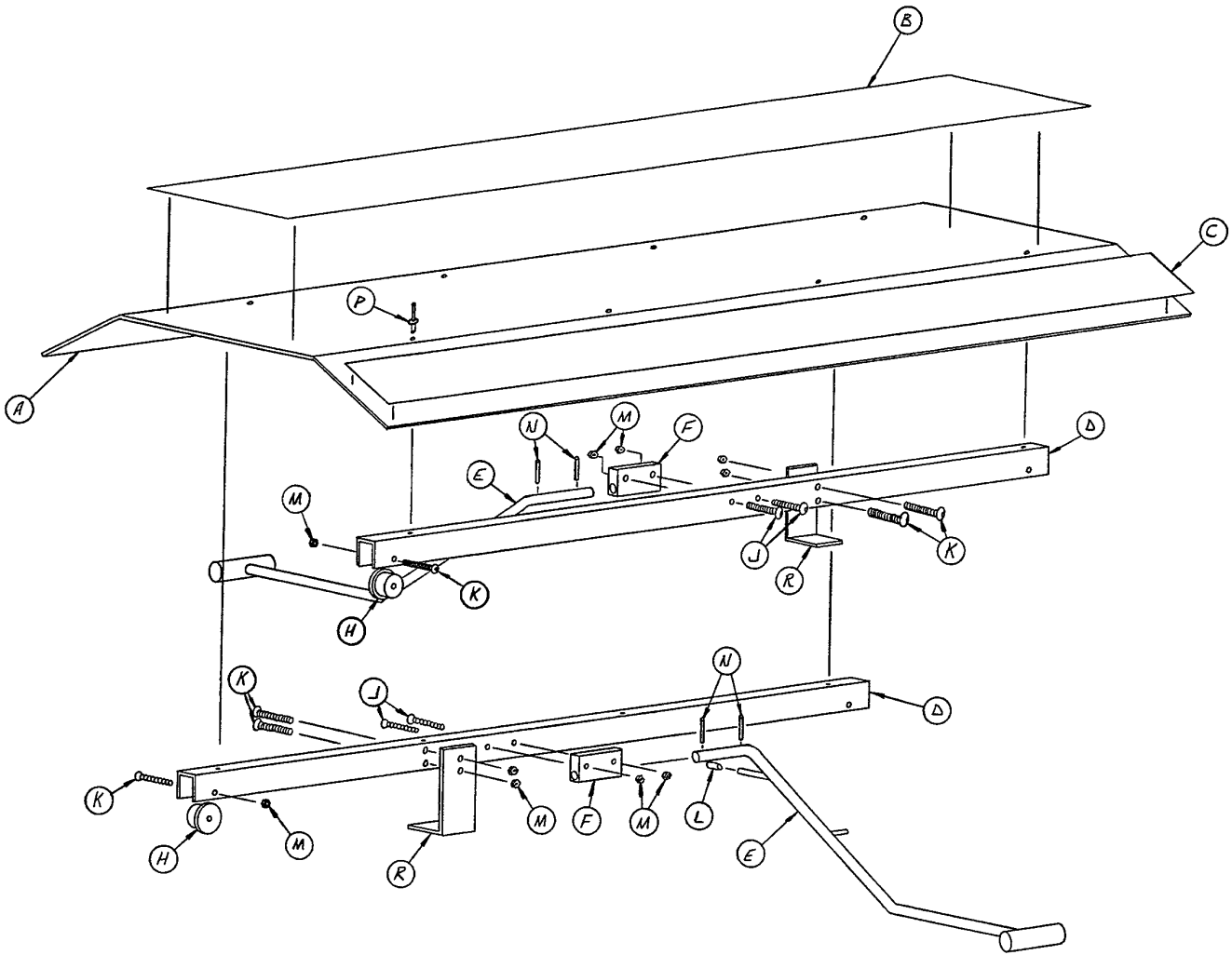
Item	Part No.	Part Name	Qty.
A	926-32-28	Fowler Plug, Right	1
B	926-32-27	Fowler Plug, Left	1
C	926-133-21	Fowler Skin	1
D	926-33-58	Fowler Tube	1
E	926-23-72	Shim	2
F	25-77	Pop Rivet	9
H	25-69	Pop Rivet	2
J	946-332-32	Cassette Hanger	2
K	7-20	Truss Hd. Mach. Screw	2
L	460-4-39	Handle	1
M	15-12	Jam Nut	4

1000-42-49 Trend. Limiter Assembly



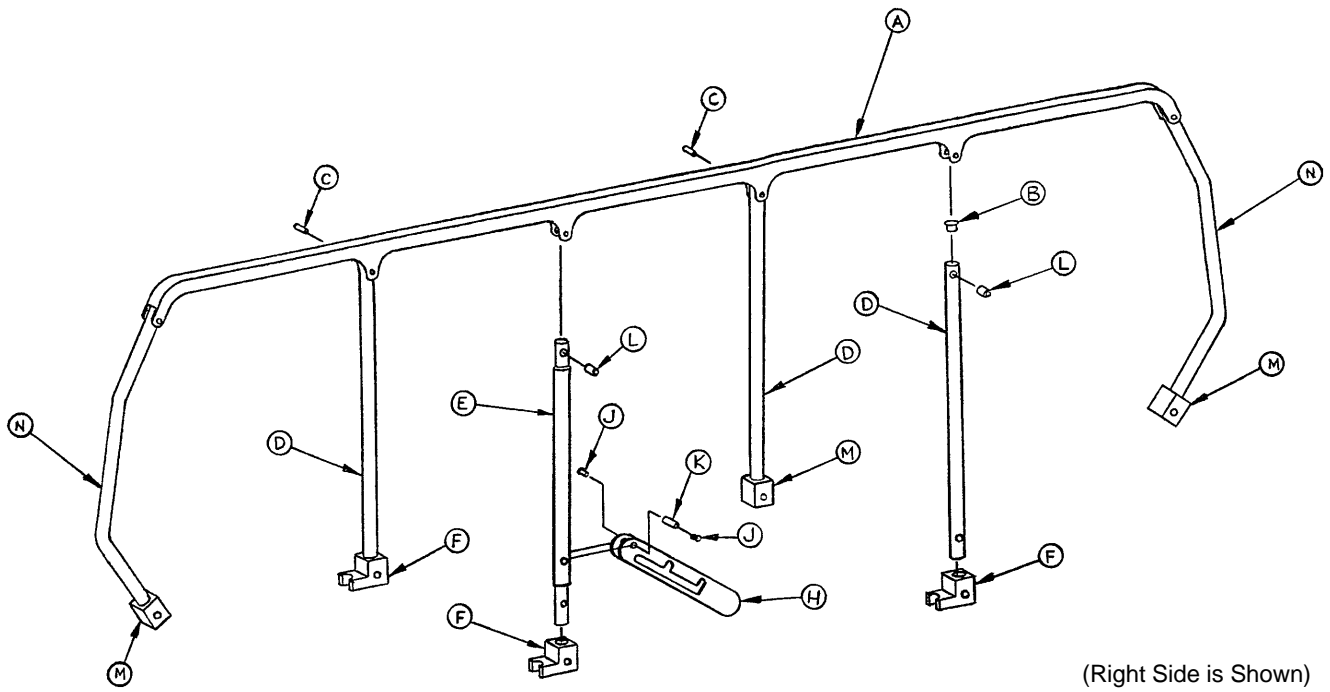
Item	Part No.	Part Name	Qty.
A	1000-42-48	Limiter Plate Assembly	1
B	4-8	Hex Soc. Machine Screw	1
C	15-23	Hex Nut	1
D	4-142	Hex Soc. Machine Screw	1
E	715-1-114	Limiter Pin Assembly	1
F	38-233	Extension Spring	1
H	16-16	Fiberlock Nut	1

926-128-14 X-Ray Tray Assembly



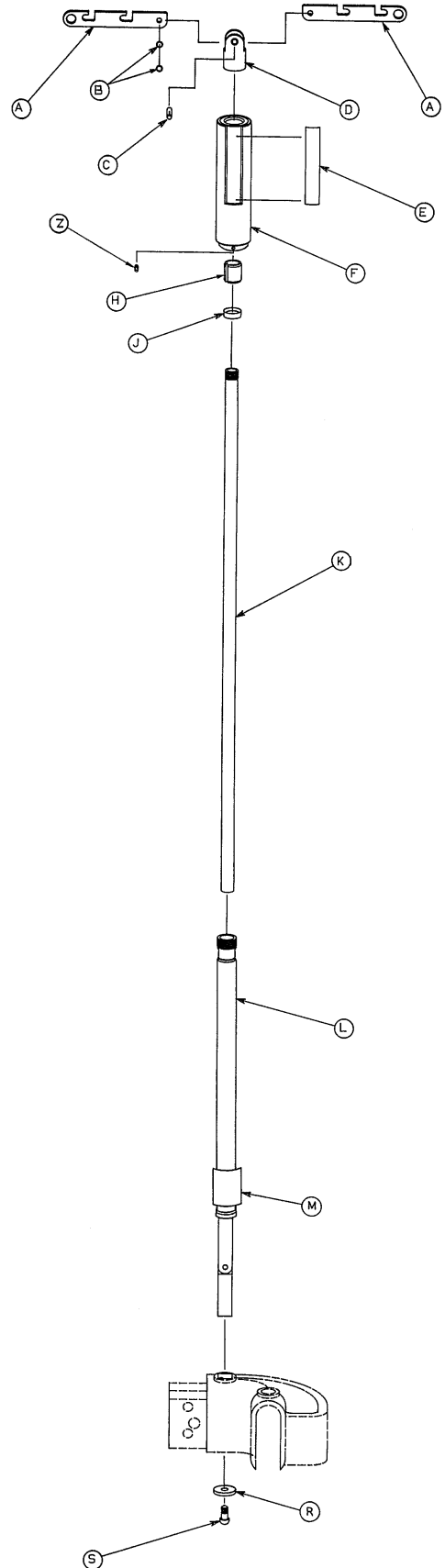
Item	Part No.	Part Name	Qty.
A	926-128-56	Tray	1
B	926-128-61	Adhesive Mat	1
C	926-28-53	Label	2
D	926-128-54	U Channel	2
E	926-128-49	Lever Arm	2
F	926-128-55	Pivot Block	2
H	926-128-57	Roller	4
J	2-85	Rd. Hd. Mach. Screw	4
K	2-36	Rd. Hd. Mach. Screw	8
L	921-20-24	Cap	2
M	16-3	Fiberlock Nut	12
N	26-4	Roll Pin	4
P	25-70	Pop Rivet	8
R	926-128-44	Retaining Tab	2

926-126-42 & 926-126-43 Siderail Ass'y, Right & Left



Item	Part No.	Part Name	Qty.
A	946-26-22	Top Rail	1
B	721-26-84	Round Hole Plug	5
C	25-61	Semi-Tubular Rivet	6
D	946-26-24	Upright	3
E	946-26-25	Lock Upright	1
F	946-26-12	Siderail Pivot	3
H	946-26-29	Siderail Lock Assembly	1
J	1-22	Flat Hd. Mach. Screw	2
K	946-26-35	Pivot Sleeve	1
L	399-31-16	Sleeve Bearing	6
M	946-26-26	Siderail Pivot	3
N	946-26-23	Upright, Curved	2

946-224-10 Folding I.V. Holder Assembly



Item	Part No.	Part Name	Qty.
A	946-224-1	Hanger	2
B	14-16	Washer	2
C	26-147	Groove Pin	1
D	946-224-2	Top Bracket, Mach'd	1
E	946-224-18	Label	2
F	946-224-33	Grip Assembly	1
H	946-224-4	Lock	1
J	946-224-5	Ring	1
K	946-224-3	Inner Tube	1
L	946-224-30	Hinge & Outer Tube Ass'y	1
M	946-224-19	Label	1
R	11-158	Washer	1
S	4-113	But. Hd. Cap Screw	1
T	25-86	Pop Rivet	4
W	946-224-22	Rest	4
Z	21-107	Set Screw	1

Warranty

Limited Warranty:

Stryker Medical Division, a division of Stryker Corporation, warrants to the original purchaser that its products should be free from defects in material and workmanship for a period of one (1) year after date of delivery. Stryker's obligation under this warranty is expressly limited to supplying replacement parts and labor for, or replacing, at its option, any product which is, in the sole discretion of Stryker, found to be defective. Stryker warrants to the original purchaser that the frame and welds on its beds will be free from structural defects for as long as the original purchaser owns the bed. If requested by Stryker, products or parts for which a warranty claim is made shall be returned prepaid to Stryker's factory. Any improper use or any alteration or repair by others in such manner as in Stryker's judgement affects the product materially and adversely shall void this warranty. No employee or representative of Stryker is authorized to change this warranty in any way.

Stryker Medical stretchers are designed for a 10 year expected life under normal use conditions and appropriate periodic maintenance as described in the maintenance manual for each device.

This statement constitutes Stryker's entire warranty with respect to the aforesaid equipment. STRYKER MAKES NO OTHER WARRANTY OR REPRESENTATION, EITHER EXPRESSED OR IMPLIED, EXCEPT AS SET FORTH HEREIN. THERE IS NO WARRANTY OF MERCHANTABILITY AND THERE ARE NO WARRANTIES OF FITNESS FOR ANY PARTICULAR PURPOSE. IN NO EVENT SHALL STRYKER BE LIABLE HEREUNDER FOR INCIDENTAL OR CONSEQUENTIAL DAMAGES ARISING FROM OR IN ANY MANNER RELATED TO SALES OR USE OF ANY SUCH EQUIPMENT.

To Obtain Parts and Service:

Stryker products are supported by a nationwide network of dedicated Stryker Field Service Representatives. These representatives are factory trained, available locally, and carry a substantial spare parts inventory to minimize repair time. Simply call your local representative, or call Stryker Customer Service at (800) 327-0770.

Supplemental Warranty Coverage:

Stryker has developed a comprehensive program of extended warranty options designed to keep your equipment operating at peak performance at the same time it eliminates unexpected costs. We recommend that these programs be activated *before* the expiration of the new product warranty to eliminate the potential of additional equipment upgrade charges. Stryker offers the following Supplemental Warranties:

Extended (Parts and Labor)

- All replacement parts (excluding mattresses and consumable items)
- Labor and travel for *all* scheduled and unscheduled calls
- Biannual Preventive Maintenance Inspections and repairs
- JCAHO paperwork for preventive maintenance
- Priority Emergency Service

Standard (Labor Only):

- Labor and travel for *all* scheduled and unscheduled calls
- Biannual Preventive Maintenance Inspections and repairs
- JCAHO paperwork for preventive maintenance
- Priority Emergency Service

Basic (Parts Only):

- All replacement parts (excluding mattresses and consumable items)
- Priority Emergency Service

Please call your local representative, or call (800) 327-0770 for further information

Warranty

Return Authorization:

Merchandise cannot be returned without approval from the Stryker Customer Service Department. An authorization number will be provided which must be printed on the returned merchandise. Stryker reserves the right to charge shipping and restocking fees on returned items.

SPECIAL, MODIFIED, OR DISCONTINUED ITEMS NOT SUBJECT TO RETURN.

Damaged Merchandise:

ICC Regulations require that claims for damaged merchandise must be made with the carrier within fifteen (15) days of receipt of merchandise. **DO NOT ACCEPT DAMAGED SHIPMENTS UNLESS SUCH DAMAGE IS NOTED ON THE DELIVERY RECEIPT AT THE TIME OF RECEIPT.** Upon prompt notification, Stryker will file a freight claim with the appropriate carrier for damages incurred. Claim will be limited in amount to the actual replacement cost. In the event that this information is not received by Stryker within the fifteen (15) day period following the delivery of the merchandise, or the damage was not noted on the delivery receipt at the time of receipt, the customer will be responsible for payment of the original invoice in full.

Claims for any short shipment must be made within thirty (30) days of invoice.



6300 Sprinkle Road, Kalamazoo, MI 49001-9799

(800) 327-0770

DH 10/93 1026-1-282 REV C