

Gynnie® OB/GYN Stretcher

Maintenance Manual

REF 1061



Table of Contents

Warning/Caution/Note Definition	3
Summary of safety precautions	3
Introduction for service	4
Expected service life	4
Contact information	4
Serial number location	4
Preventive maintenance	5
Service	6
Caster assembly replacement	6
Caster cover replacement	6
Attaching the caster cover	7
Brake cam replacement	7
Brake ring replacement	8
Brake adjustment	9
Base side control pedal linkage adjustment	10
Brake/steer side control gear replacement	10
Uni-lower pedal replacement	11
Jack replacement without compression spring	12
Jack replacement with compression spring	12
Jack assembly torque specification	13
Remove excess air from the hydraulic system	14
Checking the hydraulic fluid level	14
Jack descent rate adjustment - constant flow	14
Hydraulic poppet valve replacement	15
Hydraulic check valve replacement	16
Adjustable pressure compensated (P.C.) valve replacement	17
Base lubrication	18
Pneumatic Fowler backrest adjustment	19
Foot support replacement	20
Foot support pivot assembly removal and replacement	20
Foot support pivot teeth and mount teeth replacement	20
Foot support slide - top/bottom adjustment	20
Foot support slide - side/side adjustment	21
Stretcher assembly	22
Standard caster assembly	24
Base assembly with fifth wheel option	25
Fifth wheel pivot rod assembly	26
Fifth wheel arm assembly - 0715-201-125	27
Base assembly	28
Brake cam assembly	32
Uni-lowering pedal assembly	33
Constant flow jack assembly	34
Constant flow jack base assembly	36
Hood assembly	37
Litter assembly	38
Foot section assembly	42
Foot support pivot assembly - 1061-050-030	45
Foot support assembly, right - 1061-050-010	47
Foot support assembly, left - 1061-050-011	49
Siderail to litter assembly	51

Seat/Fowler backrest assembly - 1061-131-100.....	53
Pneumatic Fowler assembly - 1210-031-120.....	54
Head end steering handles - 1711-151-000.....	55
Push handle assembly.....	56
HAVASU™ IV pole, removable - 0390-025-000	57
Two-stage IV pole assembly - 1061-110-000.....	58
Three-stage IV pole assembly - 1061-110-001	59
Upright oxygen bottle holder assembly - 1020-130-000	60
Waste basin holder assembly - 1061-700-001	61
Hoop assembly - 1061-120-032	62
Calf support mounting brackets - 1061-130-000	63
Calf support mount assembly	64
Free standing calf rest - 1061-040-036	65
Free standing calf rest assembly	66
Serving tray - 0785-045-700	67
Oxygen bottle retainer assembly - 1040-010-090	68
Mattresses and siderail pads	69
Ankle restraint strap - 0946-043-001	71
Wrist restraint strap - 0946-044-000.....	72
Body restraint strap - 0390-019-000.....	73
Chest restraint strap - 1010-058-000.....	74
Full restraint strap package - 1010-077-000	75

Warning/Caution/Note Definition

The words **WARNING**, **CAUTION**, and **NOTE** carry special meanings and should be carefully reviewed.

WARNING

Alerts the reader about a situation which, if not avoided, could result in death or serious injury. It may also describe potential serious adverse reactions and safety hazards.

CAUTION

Alerts the reader of a potentially hazardous situation which, if not avoided, may result in minor or moderate injury to the user or patient or damage to the product or other property. This includes special care necessary for the safe and effective use of the device and the care necessary to avoid damage to a device that may occur as a result of use or misuse.

Note - Provides special information to make maintenance easier or important instructions clearer.

Summary of safety precautions

Always read and strictly follow the warnings and cautions listed on this page. Service only by qualified personnel.

WARNING

- Always use caution when you remove the compressed spring to avoid personal injury.
 - Always remove the litter and the base hood before you begin service on the jacks to avoid personal injury or damage to the product.
 - Always lower the jack rod completely to relieve the pressure on the pump piston side of the jack to prevent hydraulic fluid loss and product damage when the base plugs are removed.
-

CAUTION

- Do not let the pump piston come out of the jack to avoid product damage.
 - Do not use other types of oil. Damage to the hydraulic jacks may occur.
-

Introduction for service

This manual assists you with the service of your Stryker product. Read this manual to service this product. This manual does not address the operation of this product. See the Operations Manual for operating and use instructions. To view your Operations Manual online, see <https://techweb.stryker.com/>.

Expected service life

The **Gynnie** OB/GYN stretcher has a 10 year expected service life under normal use conditions and with appropriate periodic maintenance.

Contact information

Contact Stryker Customer Service or Technical Support at: 1-800-327-0770.

Stryker Medical
3800 E. Centre Avenue
Portage, MI 49002
USA

Note - The user and/or the patient should report any serious product-related incident to both the manufacturer and the Competent authority of the European Member State where the user and/or patient is established.

To view your operations or maintenance manual online, see <https://techweb.stryker.com/>.

Have the serial number (A) of your Stryker product available when calling Stryker Customer Service or Technical Support. Include the serial number in all written communication.

Serial number location

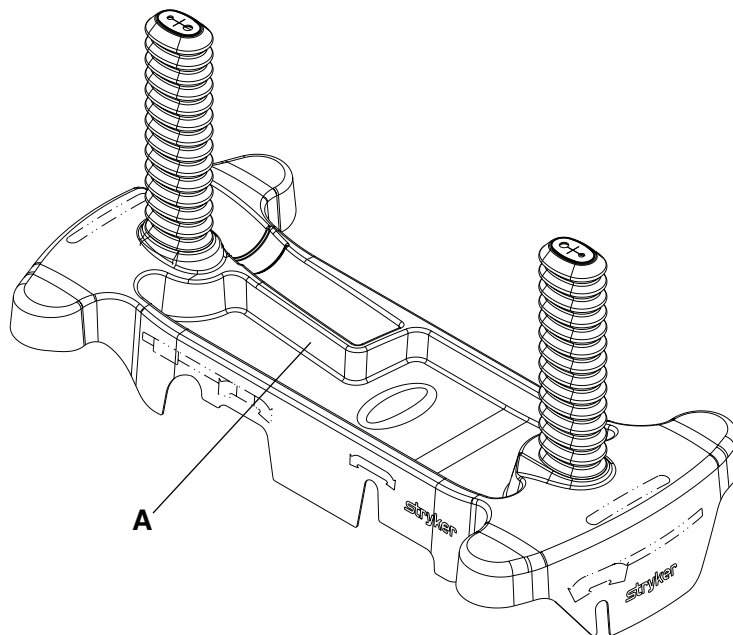


Figure 1 – Serial number location

Preventive maintenance

Remove product from service before you perform the preventive maintenance inspection. Check all items listed during annual preventive maintenance for all Stryker Medical products. You may need to perform preventive maintenance checks more often based on your level of product usage. Service only by qualified personnel.

Note - Clean and disinfect the exterior of the mattress before inspection, if applicable.

Inspect the following items:

- _____ All welds
- _____ All fasteners are secure
- _____ Brake mechanism works
- _____ Steer function works
- _____ Siderails raise, lower, and latch
- _____ Casters lock when you apply the brakes
- _____ Casters secure and swivel
- _____ Casters are free of wax or debris
- _____ Fowler backrest raises, lowers, and latches
- _____ Gatch raises, lowers, and latches
- _____ Skins are not cracked
- _____ Trendelenburg/Reverse Trendelenburg raises and lowers from all locations
- _____ IV pole option is intact and adjusts and latches in all positions
- _____ Oxygen bottle holder option is intact and works
- _____ No rips or cracks in the mattress cover
- _____ Body restraints option work
- _____ Ground chain intact
- _____ No leaks at the hydraulic connections
- _____ Hydraulic jacks hold
- _____ Hydraulic oil level sufficient
- _____ Hydraulic drop rate is correct
- _____ Lubricate where required
- _____ Accessories and mounting hardware are in good condition

Product serial number:
Completed by:
Date:

Service

Caster assembly replacement

Tools required:

- 1/2" torque wrench (ft-lb)
- 3/4" combination wrench
- 3/4" socket
- Bungee cords
- Small jack

Procedure:

1. Raise the litter to the highest position.
2. Raise both siderails to the up and latched position.
3. Raise the base hood and support the base hood with bungee cords.
4. Put the brake/steer pedal in the neutral position.
5. Using a 3/4" combination wrench and a 3/4" socket, remove the caster nut (A) that holds the caster (B) to the base frame (Figure 2).
6. Using a small jack, raise the product until the caster falls out of the frame socket.
7. Install the supplied caster on the base frame and secure in place with the caster nut. When you reinstall the caster, use a 1/2" drive torque wrench to torque the caster nut to 97.5 ± 7.5 ft-lb.
8. Verify proper operation before you return the product to service.

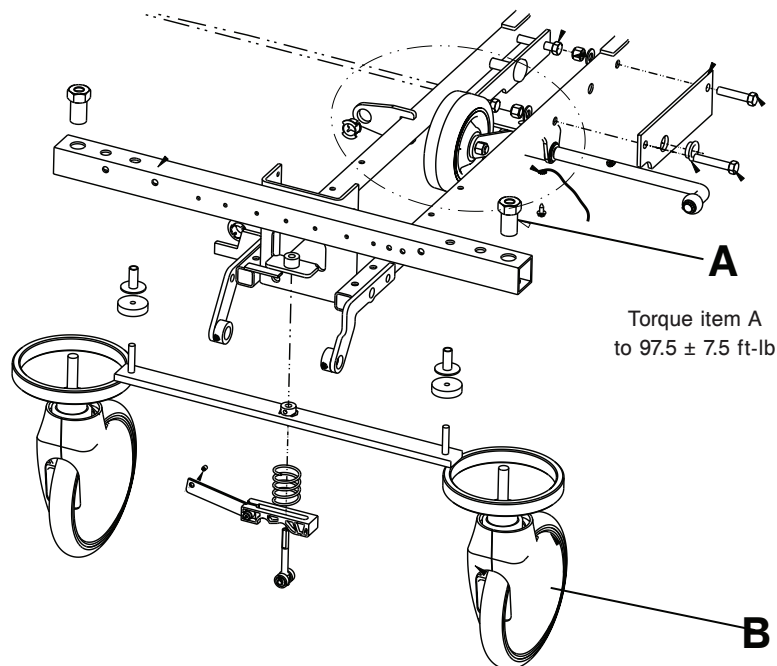


Figure 2 – Caster assembly replacement

Caster cover replacement

Tools required:

- Large slotted screwdriver

Procedure:

1. Insert the large slotted screwdriver into the cut-out inside the wheel cover and into the space between the double prongs.
2. Disconnect the double prongs and push upward to disconnect the single prong.
3. Remove the caster cover.
4. Look through the larger of the two side cut-outs and align the cover with the axle nut or bolt head.
5. Push down on the opposite side of the cover until the single prong links with the caster horn.
6. To attach the caster cover, use the palm of your hand to push until the double prongs link.
7. Verify proper operation before you return the product to service.

Attaching the caster cover

Tools required:

- None
1. Look through the larger of the two side cut-outs and align the cover with the axle nut or bolt head.
 2. Push down on the opposite side of the cover until the single prong links with the caster horn.
 3. Using the palm of your hand, push until the double prongs link.
 4. Verify proper operation before you return the product to service.

Brake cam replacement

Tools required:

- 3/32" hex wrench
- 1/8" hex wrench
- Bungee cords

Procedure:

1. Raise the litter to the highest position.
2. Raise the base hood and support the base hood with bungee cords.
3. Using a 3/32" hex wrench, loosen the set screw (A) that holds the brake adjuster (B) to the brake ring (C). Turn the adjuster (B) clockwise to remove the adjuster (Figure 3).
4. Using a 1/8" hex wrench, remove the shoulder bolt (D) and nut (E) that hold the brake link (F) on the cam (G). Remove the cam (G) (Figure 3).
5. Reverse steps 3 and 4 to install the supplied cam (G).
6. Verify that the brakes lock.
7. Adjust brake as necessary (see *Brake adjustment* (page 9)).
8. Remove bungee cords and lower the base hood.
9. Verify proper operation before you return the product to service.

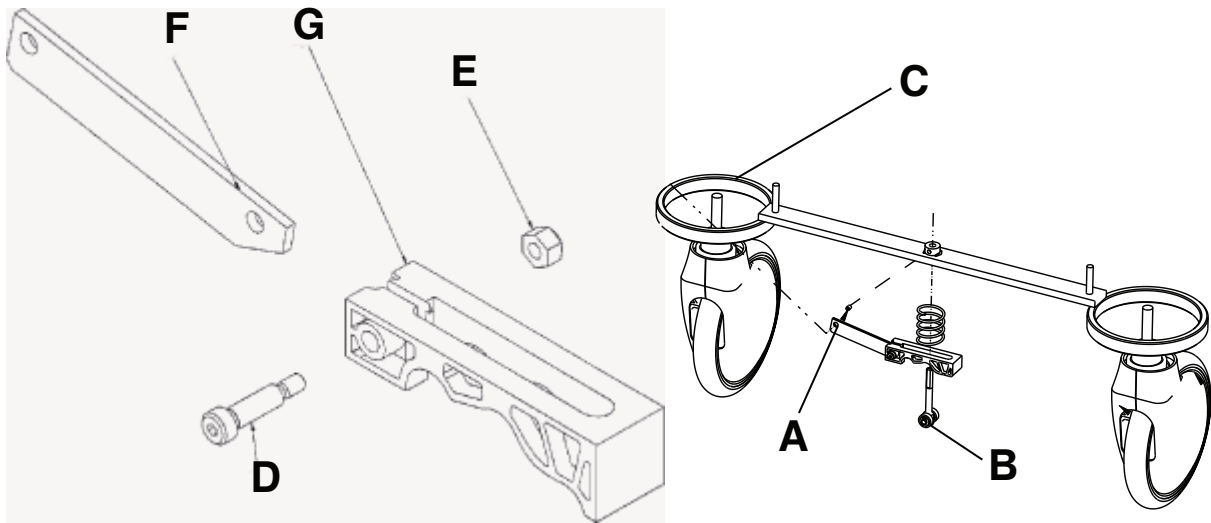


Figure 3 – Replacing the brake cam

Brake ring replacement

Tools required:

- 5/8" combination wrench
- 11/16" socket and ratchet
- 3/32" hex wrench
- Phillips screwdriver
- Large slotted screwdriver
- Small floor jack
- Needle nose pliers
- Bungee cords

Tools required:

1. Raise the litter to the highest position.
2. Raise the base hood and support the base hood with bungee cords.
3. Put the brake/steer pedal in the neutral position.
4. Using the small floor jack, lift the end of the base until the casters are approximately 12" off the floor.
5. Using a 3/32" hex wrench, loosen the set screw (A) that holds the brake adjuster (B) to the brake ring (C) (Figure 4). Turn the adjuster clockwise to remove the adjuster.
6. Remove the caster covers on both casters.
7. Remove one of the casters (see *Caster assembly replacement* (page 6)).
8. On the other caster, use an 11/16" socket and ratchet and a 5/8" combination wrench to remove the nut and bolt that hold the wheel on the caster horn. Remove only the wheel.
9. Using needle nose pliers, squeeze and remove the compressed spring (D) between the brake cam (E) and the brake ring (C) if you are working on the head end or foot end brake control (Figure 4).

WARNING - Always use caution when you remove the compressed spring to avoid personal injury.

10. Lower the brake ring (C) and remove the brake ring from the base (Figure 4).
11. Remove the brake pads (F) and bushings (G) (Figure 4). Install the brake pads and bushings on the supplied brake rings.

12. Reverse steps to install the supplied brake ring, caster, and wheel.
13. Apply and release the brakes to make sure that they work. Adjust as necessary (see *Brake adjustment* (page 9)).
14. Remove the bungee cords and lower the base hood.
15. Verify proper operation before you return the product to service.

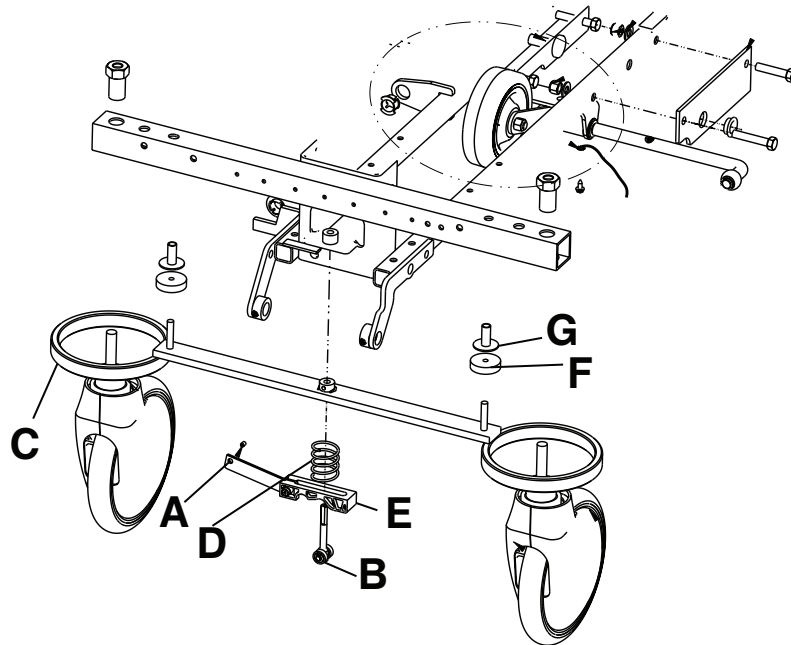


Figure 4 – Brake ring replacement

Brake adjustment

Tools required:

- 3/32" hex wrench
- Pry bar

Procedure:

Note - The flat on the thread of the stud must always be aligned with the set screw. The turn must be a full circle only.

1. Using a pry bar (A), compress the spring to relieve tension on the stud (Figure 5).
2. Using a 3/32" hex wrench, turn the set screw (B) one full turn counterclockwise to tighten the brake.
3. Using a 3/32" hex wrench, turn the set screw (B) one full turn clockwise to loosen the brake.
4. Verify proper operation before you return the product to service.

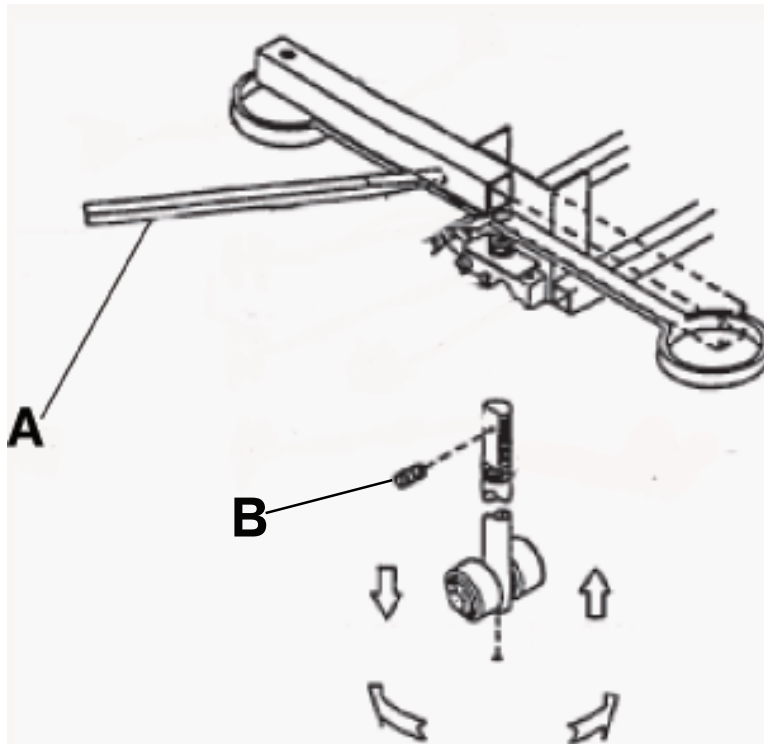


Figure 5 – Brake adjustment

Base side control pedal linkage adjustment

Tools required:

- 3/8" hex wrench
- 7/16" wrench
- 5/32" hex wrench
- Bungee cords

Procedure:

1. Place 150 to 200 lb on the litter.
2. Raise the litter to the highest position.
3. Raise the base hood and support the base hood with bungee cords.
4. Using a 3/8" hex wrench and a 5/32" hex wrench, loosen the pedal linkage adjustment nut until the jack stops drifting.
5. Raise the litter to the highest position.
6. Tighten the pedal linkage adjustment nut until the jack begins to slowly descend.
7. Using a 7/16" wrench, back the pedal linkage adjustment nut out four full turns.
8. Raise the litter to the highest position.
9. Loosen the pedal linkage adjustment nut and make sure that the jack does not drift. If the jack drifts, repeat this procedure.
10. Verify proper operation before you return the product to service.

Brake/steer side control gear replacement

Tools required:

- 1/8" hex wrench

- 5/32" hex wrench
- (2) 9/16" box end wrench
- 3/8" box end wrench
- 3/16" punch
- 1/4" punch
- Pliers
- Hammer
- Floor jack
- Bungee cords

Procedure:

1. Apply the brakes. Push on the product to make sure that the brakes work.
2. Raise the litter to the highest position.
3. Raise the base hood and support the hood with bungee cords.
4. Using pliers, remove the cotter pins from both jack pump pistons and the pump linkage.
5. Using two 9/16" box end wrenches, remove the two bearing plate bolts.
6. Remove the cotter pin on the side brake bar.
7. Remove the bearing plate.
8. Hold on to the gear and pull out the idler gear rod. Lift the gear out.
9. Slide the miter gear away from the rod spacer.
10. Remove the dowel pin.
11. Using the floor jack, raise the side of the base where the brake/steer gear needs to be replaced approximately four inches off of the floor.
12. Rotate the brake bar so that the pedals are upside down.
13. Using a 1/4" punch and a hammer, remove the groove pin from the side brake rod.
14. Using a 3/16" punch and a hammer. remove the 3/16" groove pin from the pedal.
15. Using a 5/32" hex wrench, remove the set screw from the collar inside the gear box.
16. Hold on to the gear on the rod and remove the brake rod.
17. Using a 1/8" hex wrench and a 3/8" box end wrench, remove the nuts and bolts that hold the brake link to the rod.
18. Using a 5/32" hex wrench, remove the set screw from the collar outside of the gear box.
19. Using a 1/4" punch, remove the roll pin from the cam and brake link collar.
20. Reverse steps to install the supplied gear.
21. Inspect each gear for wear. Lubricate with MPG-2 grease or the equivalent, if necessary.
22. Verify proper operation before you return the product to service.

Uni-lower pedal replacement

Tools required:

- Drill
- Small floor jack
- Pop rivet gun
- 3/16" drill bit

Procedure:

1. Apply the brake. Push on the product to make sure that the brakes work.
2. Raise the litter to the highest position.
3. Using a small floor jack, raise the side of the base frame off of the floor approximately four inches.
4. Using a drill with a 3/16" drill bit, drill out the rivets on the bottom of the pedal to be replaced.
5. Using a pop rivet gun and rivets, install the supplied pedal.
6. Lower the product to the floor.
7. Verify the proper operation before you return the product to service.

Jack replacement without compression spring

Tools required:

- 3/8" wrench
- 1/2" socket
- 1/2" wrench
- 3" extension
- Need nose pliers

Procedure:

1. Apply the brakes. Push on the product to make sure that the brakes work.
2. Raise the litter to the highest position.
3. Raise the Fowler backrest.
4. Raise the siderails to the up and latched position.
5. Using a 3/8" wrench, remove the bolt in the litter support tube above the black bellows on both ends of the product.
6. Lift the litter off of the jack shafts and set the litter aside.

Note - Litter top removal requires two people.

7. Lower the jack to the lowest position.
8. Remove the base hood.
9. Using a 1/2" socket and a 1/2" wrench, remove the four bolts, washers, and nuts that hold the jack support straps to the base frame.
10. Using needle nose pliers, remove the two cotter pins on the pump link.
11. Remove the pump link.
12. Using a 1/2" socket, a 1/2" wrench, and a 3" extension, remove the four bolts that hold the jack base to the base frame.
13. Remove the jack from the base frame.
14. Reverse steps to install the supplied jack.
15. Verify proper operation before you return the product to service.

Jack replacement with compression spring

Tools required:

- 3/8" wrench
- Need nose pliers
- Slotted screwdriver

- Spring compression tool
- 1/2" socket
- 1/2" wrench
- 3" extension

Procedure:

1. Apply the brakes. Push on the product to make sure that the brakes work.
2. Raise the litter to the highest position.
3. Raise the Fowler backrest.
4. Raise the siderails to the up and latched position.
5. Using a 3/8" wrench, remove the bolt in the litter support tube above the black bellows on both ends of the product.
6. Lift the litter off of the jack shafts and set the litter aside.

Note - Litter top removal requires two people.

7. Lower the jack to the lowest position.
8. Remove the base hood.
9. Using needle nose pliers, remove the cotter pin from the pump cylinder.
10. With the spring compressed and using a slotted screwdriver, pry the pump link out of the pump cylinder.

CAUTION - Do not let the pump piston come out of the jack to avoid product damage.

11. Using a 1/2" socket and a 1/2" wrench, remove the four bolts, washers, and nuts that hold the jack support straps to the base frame.
12. Using needle nose pliers, remove the two cotter pins on the pump link.
13. Remove the pump link.
14. Using a 1/2" socket, a 1/2" wrench, and a 3" extension, remove the four bolts that hold the jack base to the base frame. Remove the jack.
15. Reverse steps to install the supplied jack.
16. Verify proper operation before you return the product to service.

Jack assembly torque specification

Jack assembly with threads oiled:

Jack cap assembly to jack actuator cylinder	80 ± 5 ft-lb
Jack actuator cylinder to jack base assembly	60 ± 5 ft-lb

Jack base assembly with threads oiled:

Jack pump cylinder to jack base machined	50 ± 5 ft-lb
Jack pin housing to jack base machined	40 ± 5 ft-lb
Jack base plugs to jack base machined	10 ± 2 ft-lb
Jack valve plug to jack base machined	10 ± 2 ft-lb
Flow control valve to jack base machined	18 ± 2 ft-lb

Remove excess air from the hydraulic system

Tools required:

- None

Procedure:

1. Make sure that all hydraulic linkages are secure and work (see *Base side control pedal linkage adjustment* (page 10)).
2. Press down on the pump pedal several times to force the air through the system.

Checking the hydraulic fluid level

Tools required:

- 3/8" open end wrench
- 3/4" open end wrench

Procedure:

WARNING - Always remove the litter and the base hood before you begin service on the jacks to avoid personal injury or damage to the product.

1. Raise the litter to the highest position.
2. Raise the Fowler backrest to the upright position.
3. Raise the siderails to the up and latched position.
4. Using a 3/8" open end wrench, remove the bolt in the litter support tube above the black bellows on both ends of the product.
5. Lift the litter off of the jack shafts and set the litter aside.

Note - Litter top removal requires two people.

6. Lift the base hood off the base frame and set the hood aside.
7. Make sure that there are no hydraulic leaks. If leaks are observed, replace the jack (see *Jack replacement without compression spring* (page 12) or *Jack replacement with compression spring* (page 12)).
8. Lower the jack to the lowest position.
9. Using a 3/4" open end wrench, turn the fill plug located on the side of the reservoir counterclockwise to allow excess system pressure to vent. Remove the fill plug.
10. Check the fill level of the hydraulic fluid (fluid should be visible at the bottom of the fill hole). If necessary, add **Mobil Aero HFA** hydraulic fluid (Stryker pn 2020-070-245) until fluid is visible at the bottom of the fill hole.
11. Install the fill plug.

CAUTION - Do not use other types of oil. Damage to the hydraulic jacks may occur.

12. Reverse steps to install the litter and the base hood.
13. Verify proper operation before you return the product to service.

Jack descent rate adjustment - constant flow

Tools required:

- Bungee cords

Procedure:

1. Raise the litter to the highest position.
2. Raise the base hood and support the hood with bungee cords.

3. Locate the adjustable descent valve on the base of the jack. Turn the silver locking ring counterclockwise to loosen the ring.
4. To decrease the descent rate, turn the blue knob counterclockwise.
5. To increase the descent rate, turn the blue knob clockwise.
6. Adjust the valve so that the foot end jack descends slightly faster than the head end jack.
7. Remove the bungee cords and lower the base hood.
8. Verify proper operation before you return the product to service.

Note - The jack descent rate was preset at the factory to lower the foot end three to seven seconds faster than the head end. It is recommended that the foot end lower faster than the head end to reduce patient disorientation.

Hydraulic poppet valve replacement

Tools required:

- 3/8" open end wrench
- Small needle nose pliers
- Torque wrench (ft-lb)

Procedure:

WARNING

- Always remove the litter and the base hood before you begin service on the jacks to avoid personal injury or damage to the product.
 - Always lower the jack rod completely to relieve the pressure on the pump piston side of the jack to prevent hydraulic fluid loss and product damage when the base plugs are removed.
-

1. Raise the litter to the highest position.
2. Raise the Fowler backrest to the upright position.
3. Raise the siderails to the up and latched position.
4. Using a 3/8" open end wrench, remove the bolt in the litter support tube above the black bellows on both ends of the product.
5. Lift the litter off the jack shafts and set the litter aside.

Note - Litter top removal requires two people.

6. Lift the base hood off the base frame and set the hood aside.
7. Lower the jack to the lowest position.
8. Remove the base plug (D) and the seal (L).
9. Remove the compression spring (C).
10. Using small needle nose pliers, remove the poppet valve (F).
11. Install the supplied poppet (F).
12. Install the compression spring (C).
13. Install the seal (L) and the base plug (D). Using a torque wrench, tighten the plug to 10 ft-lb.

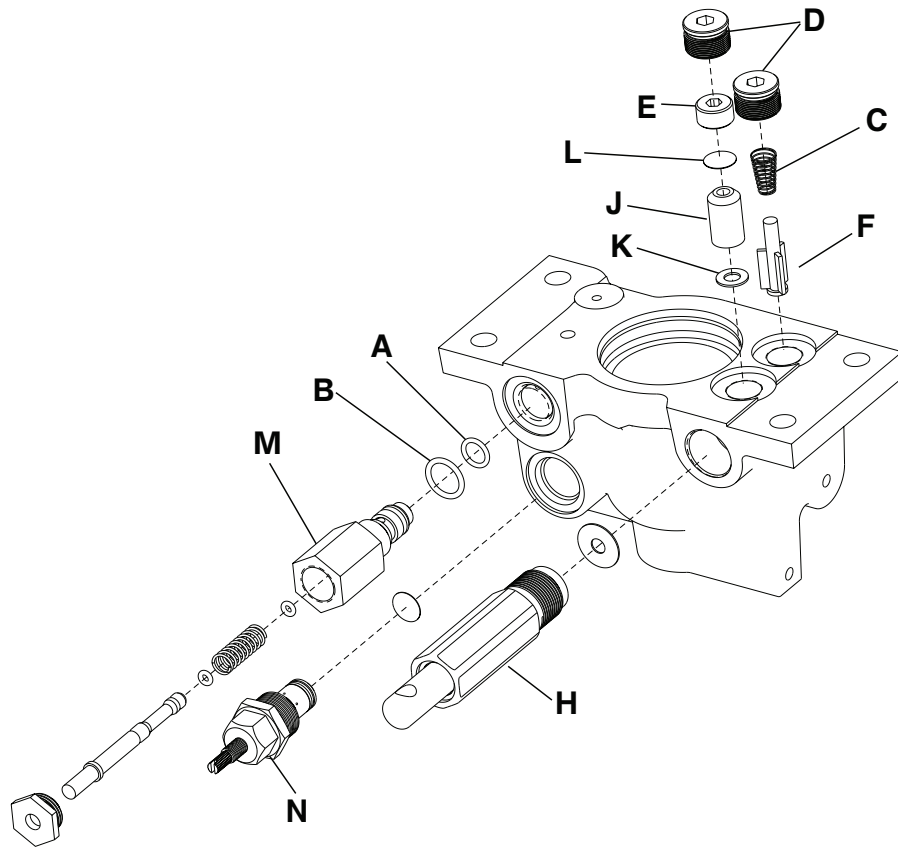


Figure 6 – Poppet valve replacement

14. Raise the jack to the highest position.
15. Apply weight and make sure that the jack holds its position and that there are no hydraulic leaks.
16. Reverse steps to install the hood and the litter.
17. Verify proper operation before you return the product to service.

Hydraulic check valve replacement

Tools required:

- 3/8" open end wrench
- Stiff wire (bent, pointed end)
- 1/2" diameter rod
- Torque wrench (ft-lb)

Procedure:

WARNING

- Always remove the litter and the base hood before you begin service on the jacks to avoid personal injury or damage to the product.
 - Always lower the jack rod completely to relieve the pressure on the pump piston side of the jack to prevent hydraulic fluid loss and product damage when the base plugs are removed.
-

1. Raise the litter to the highest position.
2. Raise the Fowler backrest to the upright position.
3. Raise the siderails to the up and latched position.

4. Using a 3/8" open end wrench, remove the square head set screws from both the head end and foot end jack support tubes.
5. Using a 3/8" open end wrench, remove the bolt in the litter support tube above the black bellows on both ends of the product.
6. Lift the litter off the jack shafts and set the litter aside.

Note - Litter top removal requires two people.

7. Lift the base hood off the base frame and set the base hood aside.
8. Lower the jack to the lowest position.
9. Remove the base plug (D) and the seal (L) (Figure 6).
10. Remove the valve plug (E).
11. Using a stiff wire with a bent, pointed end, remove the check valve (J) and the seal (K).
12. Using a 1/2" diameter rod, install the seal (K) flat to the bottom of the hole.
13. Install the supplied check valve (J) with the beveled end up.
14. Install the valve plug (E). Use a torque wrench to tighten the plug to 10 ft-lb.
15. Install the seal (L) with the base plug (D). Tighten the base plug to 10 ft-lb.
16. Raise the jack to the highest position.
17. Apply weight and make sure that the jack holds its position and that there are no hydraulic leaks.
18. Reverse steps to install the base hood and litter.
19. Verify proper operation before you return the product to service.

Adjustable pressure compensated (P.C.) valve replacement

Tools required:

- 3/8" open end wrench
- 13/16" open end wrench

Procedure:

WARNING

- Always remove the litter and the base hood before you begin service on the jacks to avoid personal injury or damage to the product.
 - Always lower the jack rod completely to relieve the pressure on the pump piston side of the jack to prevent hydraulic fluid loss and product damage when the base plugs are removed.
-

1. Raise the litter to the highest position.
2. Raise the Fowler backrest to the upright position.
3. Raise the siderails to the up and latched position.
4. Using a 3/8" open end wrench, remove the square head set screws from both the head end and foot end jack support tubes.
5. Lift the litter off the jack shafts and set the litter aside.

Note - Litter top removal requires two people.

6. Lift the base hood off the base frame and set the hood aside.
7. Lower the jack to the lowest position.
8. Using a 13/16" open end wrench, remove the adjustable P.C. valve (M) (Figure 6).
9. Check for any contaminants in the valve and jack base.

10. Install the supplied P.C. valve (M). Moisten the O-ring seal (B) with hydraulic fluid to make sure that the O-ring seals tight.
11. Tighten the valve manually, and then use a 13/16" open end wrench to tighten an additional 1/8 to 1/4 turn.
Note - Do not overtighten or damage to the O-ring may occur.
12. Raise the jack to the highest position, and then lower the jack to the lowest position to make sure that the jack works.
13. Check for any hydraulic fluid leaks.
14. Reverse steps to install the base hood and litter.
15. Verify proper operation before you return the product to service.

Base lubrication

Tools required:

- MPG2 grease or equivalent

Procedure:

1. Lubricate the adjuster rod (A) (Figure 7).
2. Lubricate all of the pump links (C), release links (D), pump pedal slides (E), and jack pump springs (F).

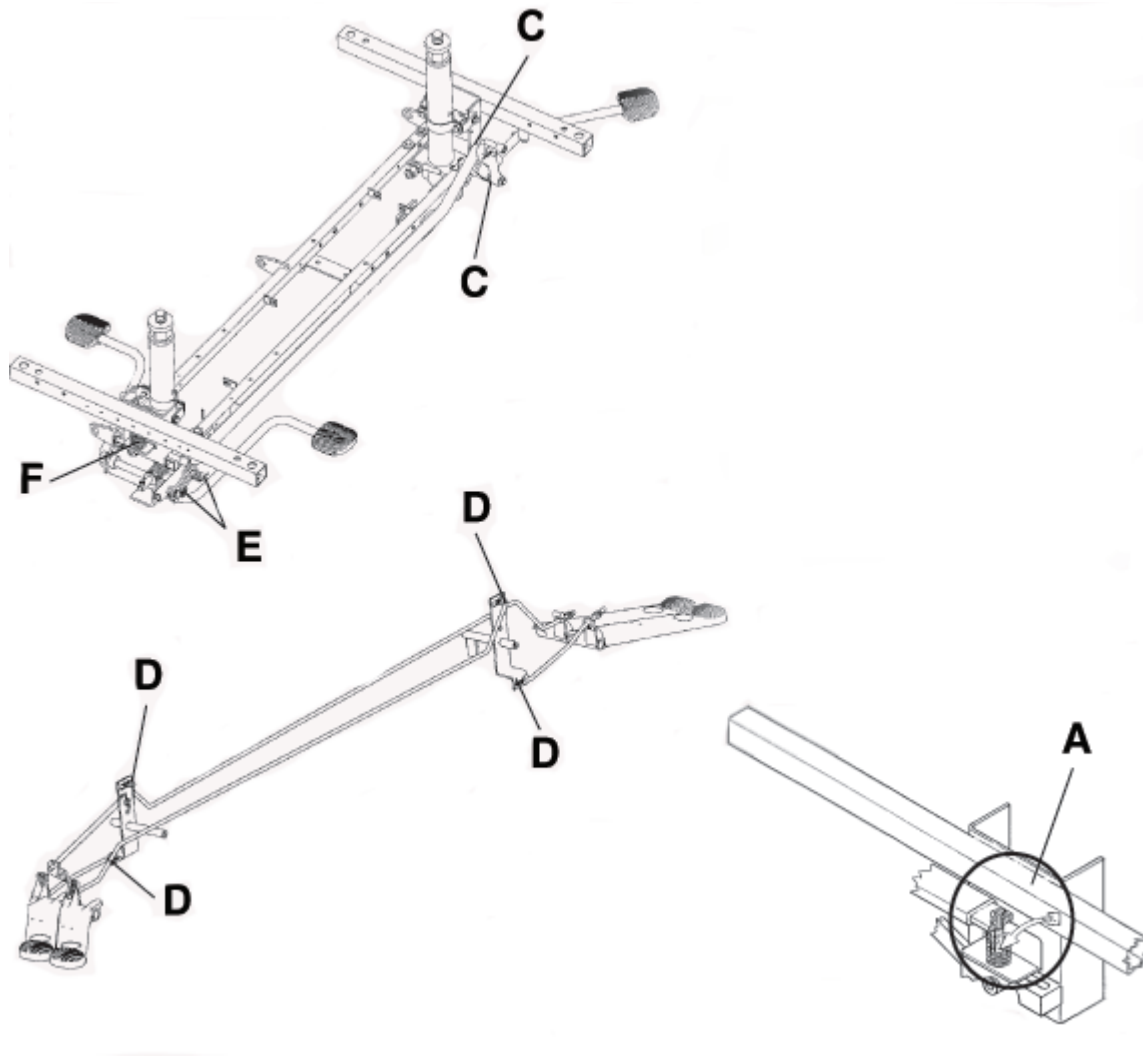


Figure 7 – Base lubrication

Pneumatic Fowler backrest adjustment

Tools required:

- 5/32" hex wrench
- 1/2" open end wrench

Procedure:

1. Raise the Fowler backrest to 75° or higher.
2. Using a 1/2" open end wrench, loosen the nuts in the actuator arms on the end of the trip bar.
3. Use a 5/32" hex wrench to turn the hex screw one to two turns counterclockwise if the Fowler backrest will not move.
4. Use a 5/32" hex wrench to turn the hex screw one to two turns clockwise if the Fowler backrest will not hold its position.
5. Tighten the nuts.
6. Make sure that the Fowler backrest will travel from flat to 90° and down again and that the Fowler backrest holds its position when weight is applied.
7. Verify proper operation before you return the product to service.

Foot support replacement

Tools required:

- Phillips screwdriver

Procedure:

1. Using a Phillips screwdriver, remove the Phillips screw, washer, and plastic insert on the support.
2. Remove the foot support toward the foot end of the product through the pivot assembly.
3. Reverse steps to install the supplied foot support.
4. Verify proper operation before you return the product to service.

Foot support pivot assembly removal and replacement

Tools required:

- 7/16" open end wrench

Procedure:

1. Using a 7/16" open end wrench, remove the two 7/16" Nylock hex nuts and two carriage bolts that hold the pivot assembly to the litter.
2. Remove the two 1/2" Nylock nuts and the two hex head bolts that go through the foot end litter bracket.
3. Tap the hex bolts toward the center of the product to access to the pivot assembly.
4. Reverse steps to install the supplied foot support pivot assembly.
5. Verify proper operation before you return the product to service.

Foot support pivot teeth and mount teeth replacement

Tools required:

- Drill
- Pop rivet gun

Procedure:

1. Raise the litter to the highest position.
2. Remove the foot support (see *Foot support replacement* (page 20)).
3. Remove the foot support pivot assembly (see *Foot support pivot assembly removal and replacement* (page 20)).
4. Remove the pivot mount to access the two pop rivets that hold the mount teeth to the pivot mount.
5. Using a drill, drill out the two pop rivets.
6. Using a pop rivet gun, install the supplied pop rivets to secure the pivot teeth.
7. Remove the two Torx screws that hold the mount teeth plate.
8. Install the supplied mount teeth plate.
9. Reverse steps to reassemble the pivot assembly and foot support.
10. Verify proper operation before you return the product to service.

Foot support slide - top/bottom adjustment

Tools required:

- 3/16" hex wrench

Procedure:

1. Remove the foot support pivot assembly (see *Foot support pivot assembly removal and replacement* (page 20)).
2. Insert the extension tube through the slide opening of the pivot assembly.
3. Using a 3/16" hex wrench, install the set screws into the bosses on the pivot.
4. Using a 3/16" hex wrench, alternately turn each set screw clockwise until the extension tube doesn't slide.
5. Turn the assembly on end with the pivot assembly on top.
6. Using a 3/16" hex wrench, alternately turn each set screw counterclockwise until the pivot assembly slides down the extension tube without any force applied.
7. Verify proper operation before you return the product to service.

Foot support slide - side/side adjustment**Tools required:**

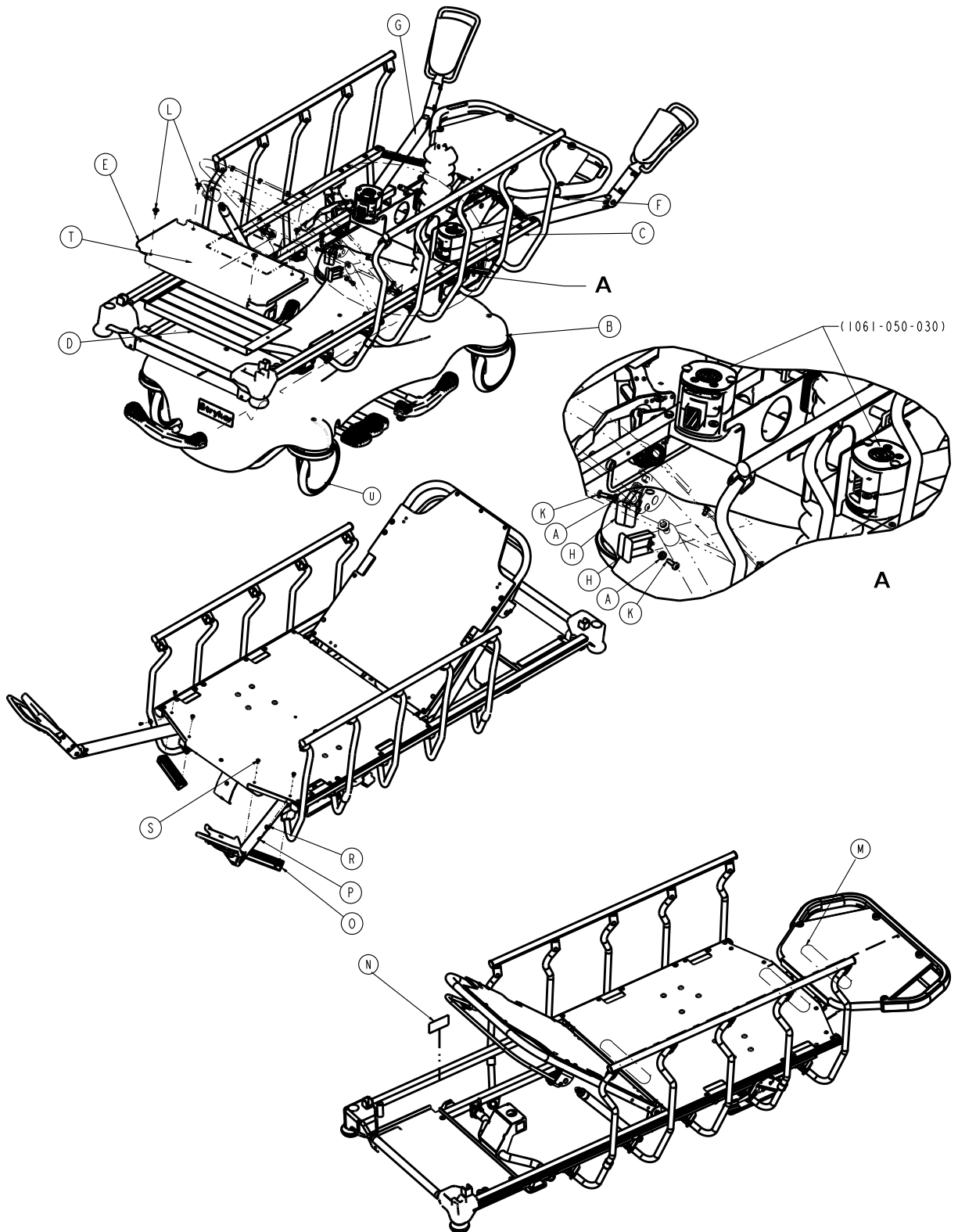
- 3/16" hex wrench

Procedure:

1. Install four set screws in each side of the pivot.
2. Using a 3/16" hex wrench, turn each set screw clockwise until the extension tube is centered on the pivot assembly and does not slide.
3. Turn the assembly on end with the pivot assembly on top.
4. Using a 3/16" hex wrench, alternately turn each set screw counterclockwise until the pivot assembly slides down the extension tube without any force applied.
5. Verify proper operation before you return the product to service.

Stretcher assembly

1061-026-000 Rev AA (Reference only)

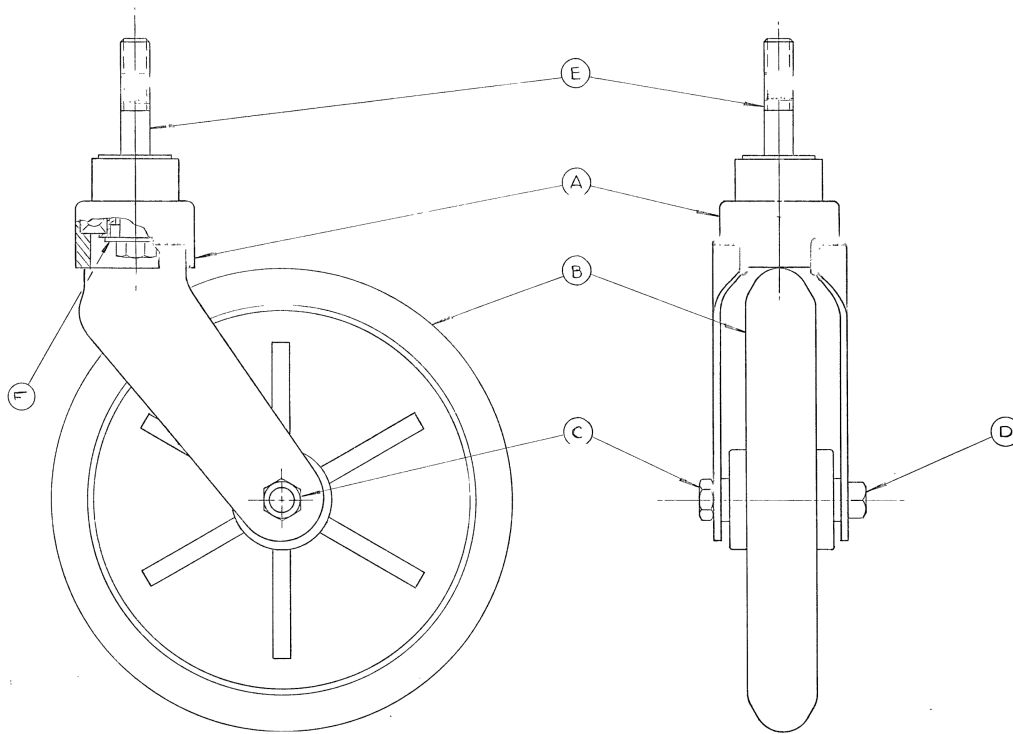


Item	Number	Name	Quantity
A	0716-001-286	Spacer	2
B	1061-001-010	Base assembly (page 28)	1

Item	Number	Name	Quantity
C	1060-030-010	<i>Litter assembly (page 38)</i>	1
D	1061-031-010	Weldment - weight tray	1
E	1061-031-014	Tray	1
F	1061-050-010	<i>Foot support assembly, right - 1061-050-010 (page 47)</i>	1
G	1061-050-011	<i>Foot support assembly, left - 1061-050-011 (page 49)</i>	1
H	1061-050-055	Extrusion end plug	2
K	0023-059-000	Pan head tap screw	2
L	0025-132-000	Flange rivet	4
M	7900-001-102	Velcro® (12")	3
N	1210-800-008	Patent label	1
O	1061-050-162	Foot support ramp	2
P	0025-040-000	Rivet	2
R	0029-003-000	Eyelet	2
S	0025-172-000	Rivet	4
T	1061-200-002	Gynnie label	1
U	1010-056-010	Wheel covers	1

Standard caster assembly

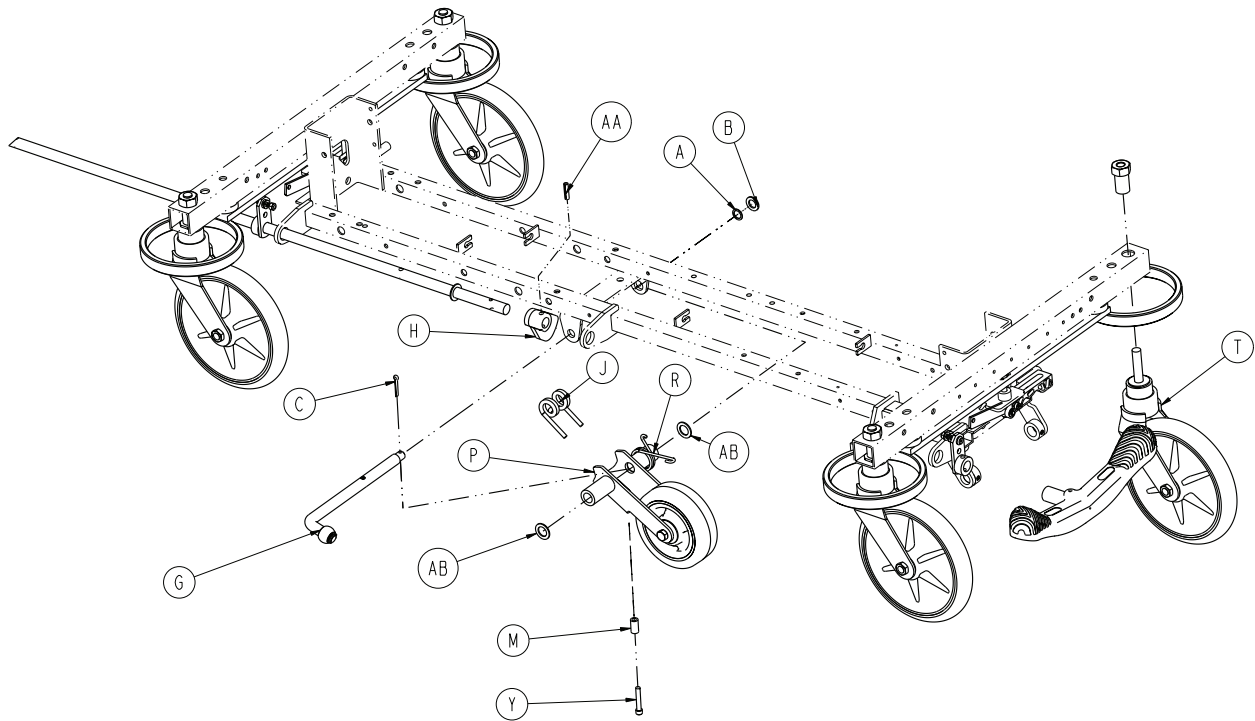
0715-002-020 Rev A (Reference only)



Item	Number	Name	Quantity
A	0715-002-016	Caster horn with bearing assembly	1
B	0715-002-025	Caster wheel	1
C	0016-060-000	Hex nut	1
D	0003-099-000	Hex bolt	1
E	0715-003-096	Hex bolt	1
F	0011-310-000	Flat washer	1

Base assembly with fifth wheel option

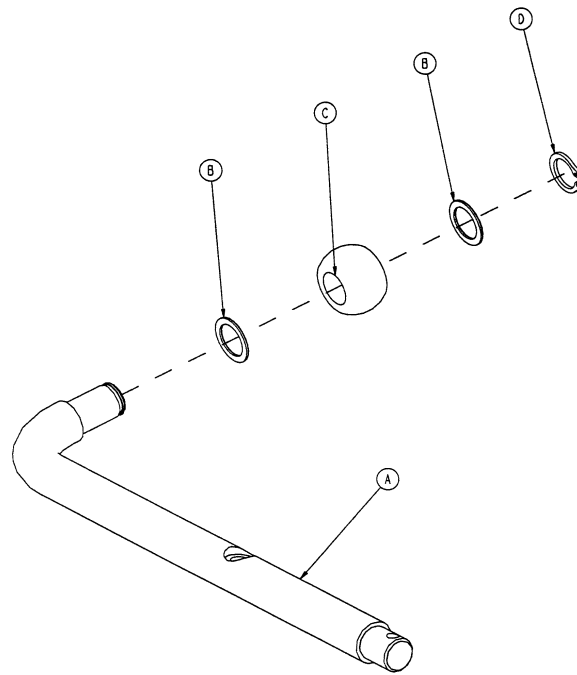
1010-260-010 Rev H (Reference only)



Item	Number	Name	Quantity
A	0014-079-000	Nylon washer	1
B	0011-013-000	Washer	1
C	0027-016-000	Cotter pin	1
G	1210-201-002	<i>Fifth wheel pivot rod assembly (page 26)</i>	1
H	1210-001-145	Cam	1
J	1210-001-148	Torsion spring	1
M	1210-201-149	Spacer spring	1
P	0715-201-125	<i>Fifth wheel arm assembly - 0715-201-125 (page 27)</i>	1
R	1210-001-146	Torsion spring	1
T	0715-002-020	<i>Standard caster assembly (page 24)</i>	4
Y	0004-010-000	Bolt	1
AA	0026-013-000	Roll pin	1
AB	0014-080-000	Nylon washer	2

Fifth wheel pivot rod assembly

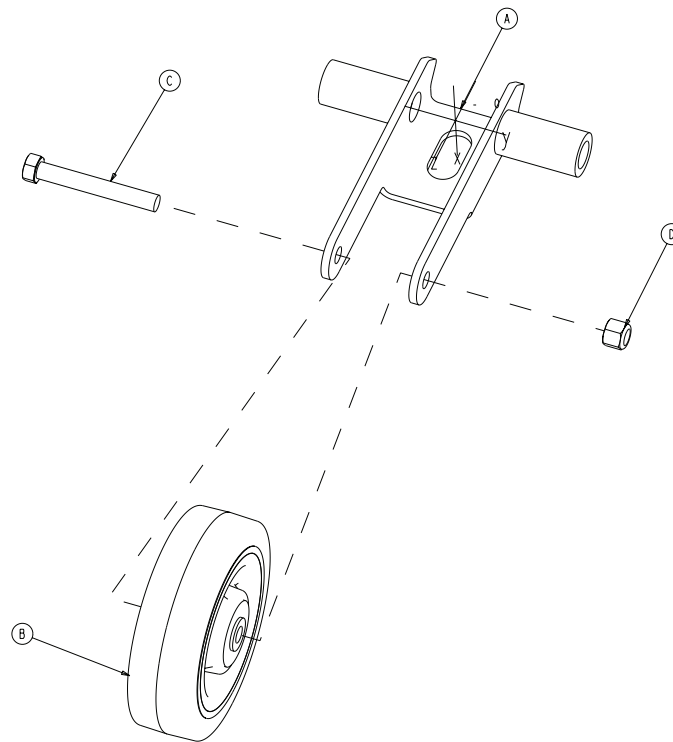
1210-201-002 Rev A (Reference only)



Item	Number	Name	Quantity
A	1210-001-143	Pivot rod	1
B	0014-079-000	Nylon washer	2
C	1210-001-144	Roller	1
D	0028-131-000	Snap ring	1

Fifth wheel arm assembly - 0715-201-125

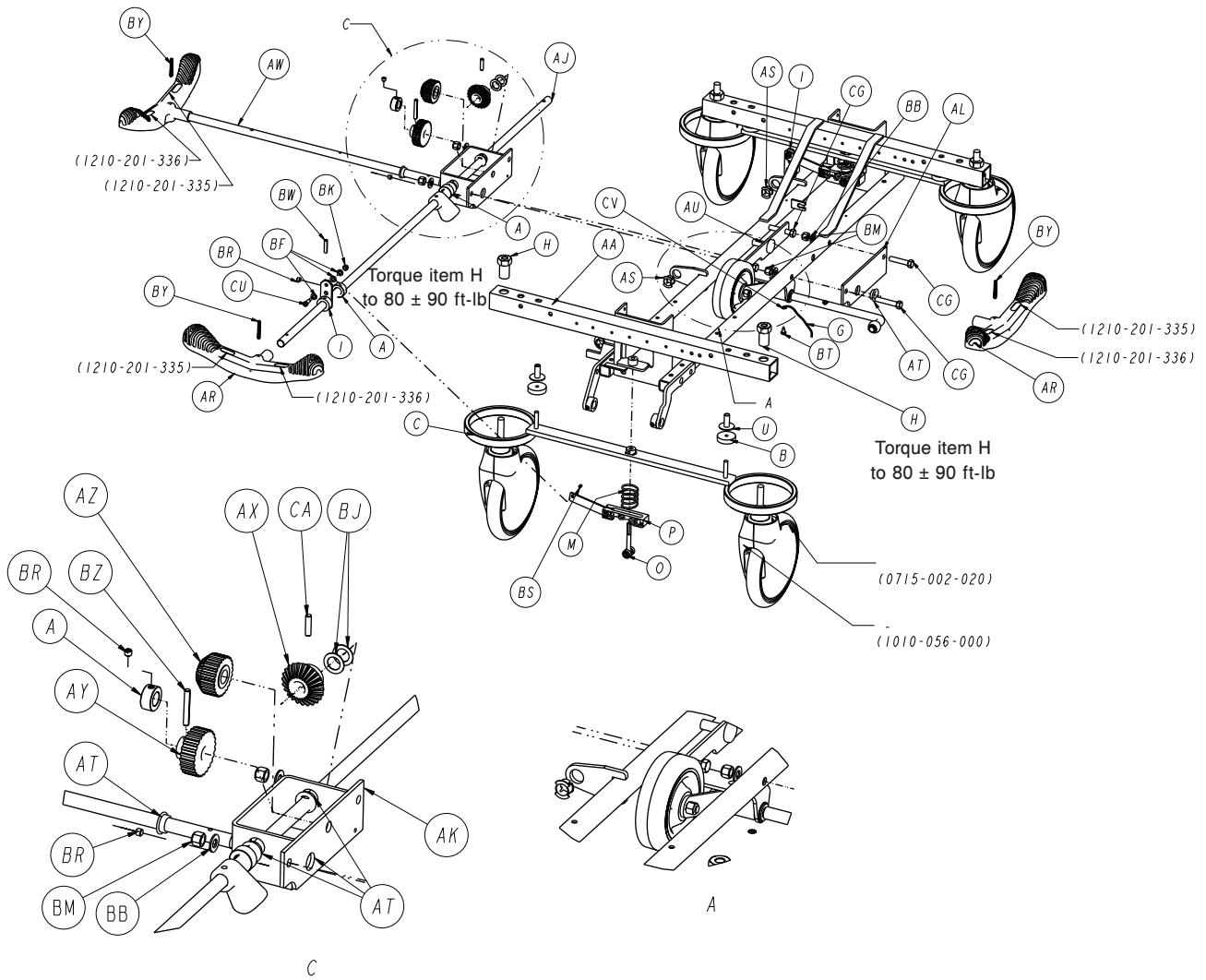
Rev A (Reference only)

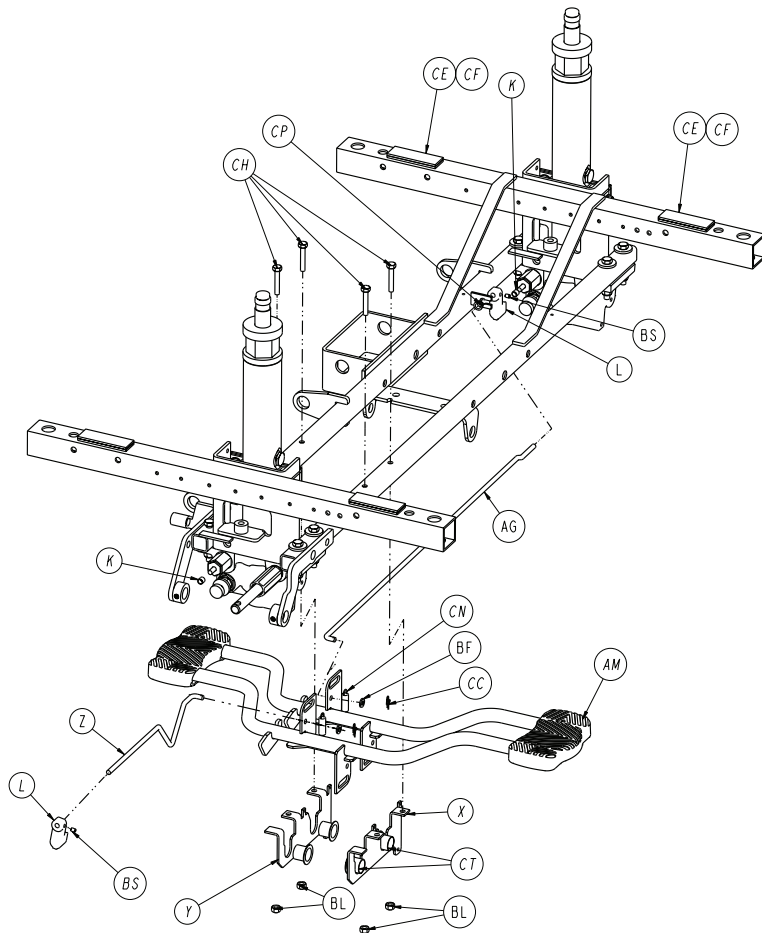
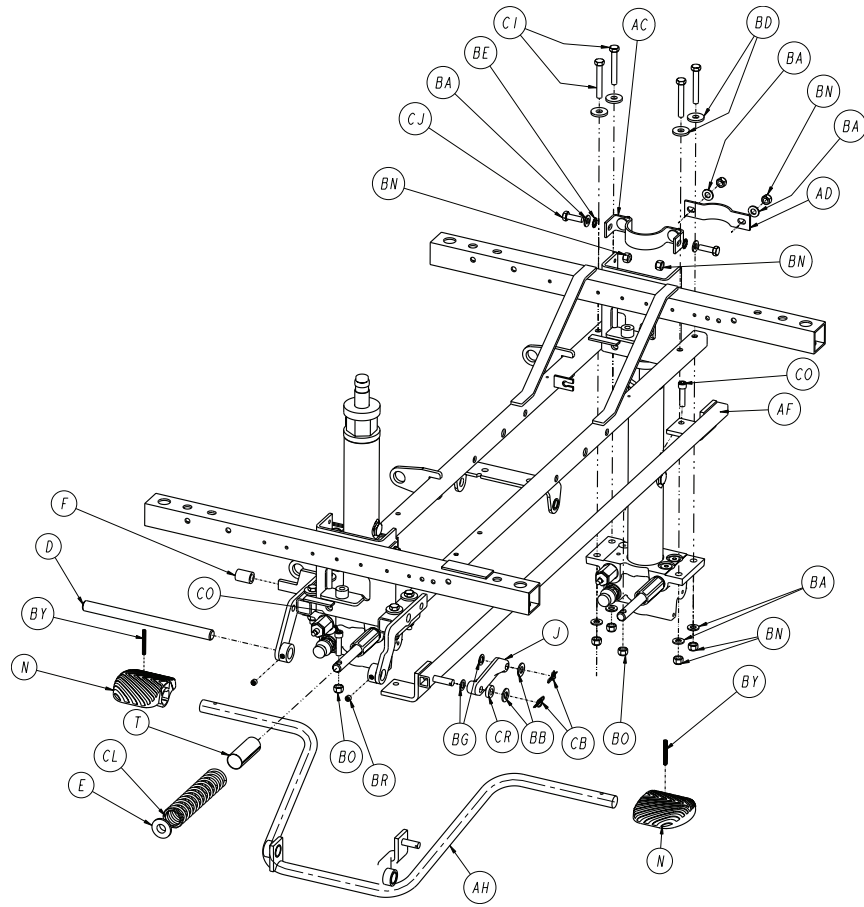


Item	Number	Name	Quantity
A	1210-201-553	Wheel arm	1
B	1210-001-147	Fifth wheel	1
C	0003-031-000	Hex head cap screw	1
D	0016-035-000	Nylock nut	1

Base assembly

1061-001-010 Rev R (Reference only)



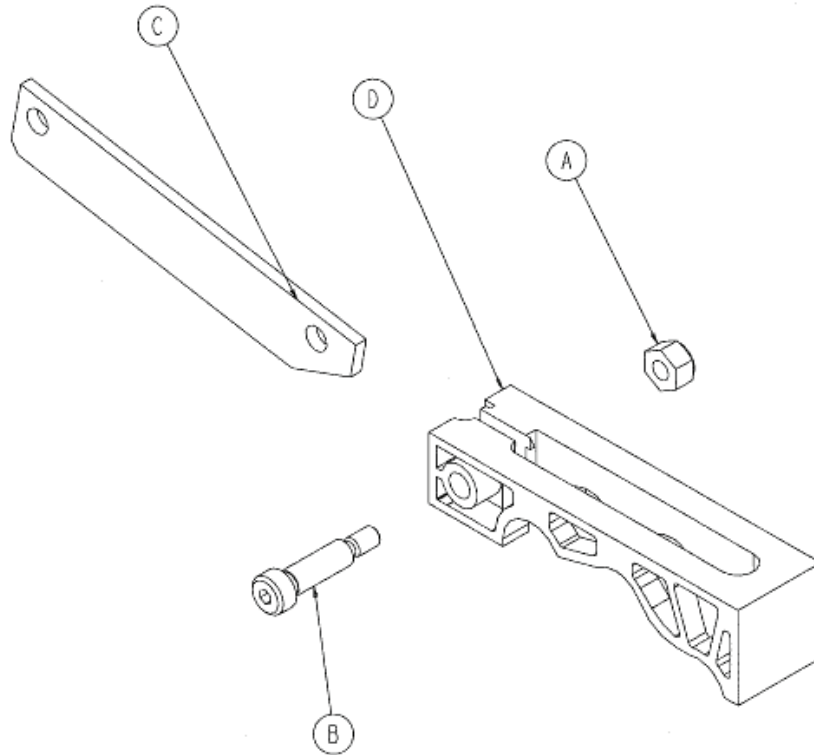


Item	Number	Name	Quantity
A	0042-020-000	Collar	3
B	0715-001-011	Brake cushion	4
C	0715-001-061	Caster brake weldment	2
D	0715-001-092	Pump pedal shaft	1
E	0715-001-133	Collar	1
F	0715-001-140	Vinyl tube	1
G	3001-200-052	Ground chain	1
H	0715-001-158	Caster nut	4
I	0715-001-165	Actuator plate weldment	2
J	0715-001-214	Connecting link	1
K	0715-001-333	Release rod stop sleeve	2
L	0715-001-346	Release paddle	2
M	0715-201-094	Spring	2
N	0715-201-126	Pump pedal	2
O	0715-201-150	Brake adjuster assembly	2
P	0715-201-213	<i>Brake cam assembly (page 32)</i>	2
T	0763-001-016	Spring holder	1
U	0946-001-116	Brake bar bushing	4
X	1061-001-114	Pedal pivot, left	1
Y	1061-001-115	Pedal pivot, right	1
Z	1061-001-139	Pull release rod, head end	1
AA	1061-001-120	Base weldment	1
AC	1061-001-192	Jack support	2
AD	1061-001-193	Jack support clamp	2
AE	1061-700-300	<i>Hood assembly (page 37)</i>	1
AF	1061-201-027	Pump connecting rod weldment	1
AG	1061-201-222	Push release rod, foot end	1
AH	1061-201-108	Pump pedal assembly	1
AJ	1061-201-230	Brake rod	1
AK	1061-301-400	Gear box weldment	1
AL	1061-301-412	Support plate	1
AM	1061-500-000	<i>Uni-lowering pedal assembly (page 33)</i>	1
AR	1210-201-153	Butterfly "v" pedal	3
AS	1210-201-251	Celcon insert	3
AT	1210-201-401	Bushing	5
AU	1061-001-401	Gear support weldment	1
AW	1210-201-409	Side control brake rod brake	1
AX	1210-301-403	Miter gear	1
AY	1210-301-404	Spur gear	1
AZ	1210-301-405	Combination gear	1
BA	0011-003-000	Washer	16
BB	0011-004-000	Washer	6
BD	0011-262-000	Washer	8
BE	0013-038-000	Tooth lock washer	4
BF	0014-002-000	Washer	10
BG	0014-009-000	Washer	2
BJ	0014-080-000	Washer	2
BK	0016-059-000	Hex lock flex nut	2

Item	Number	Name	Quantity
BL	0016-118-000	Lock nut	4
BM	0016-035-000	Hex nut	4
BN	0016-036-000	Hex nut	16
BO	0016-048-000	Hex nut	2
BP	0016-049-000	Hex nut	1
BR	0021-022-000	Set screw	5
BS	0021-050-000	Set screw	4
BT	0003-364-000	Hex washer head tapping screw	1
BW	0026-013-000	Spring pin	2
BY	0026-143-000	Groove pin	5
BZ	0026-166-000	Groove pin	1
CA	0026-265-000	Dowel pin	1
CB	0027-022-000	Rue pin	2
CC	0027-020-000	Rue pin	2
CE	0029-007-000	Dual lock	8
CF	0029-009-000	Dual lock	8
CG	0003-013-000	Hex head cap screw	4
CH	0003-355-000	Hex bolt	4
CI	0003-062-000	Hex head cap screw	8
CJ	0003-085-000	Hex head cap screw	4
CL	0038-246-000	Compression spring	1
CN	0038-355-000	Extension spring	2
CO	0004-146-000	Socket head cap screw	2
CP	0052-245-000	Nyliner	1
CR	0052-284-000	Nylon spacer	1
CT	0052-747-000	Flange bearing	4
CU	0008-010-000	Shoulder bolt	2
CV	0013-018-000	External tooth washer	1

Brake cam assembly

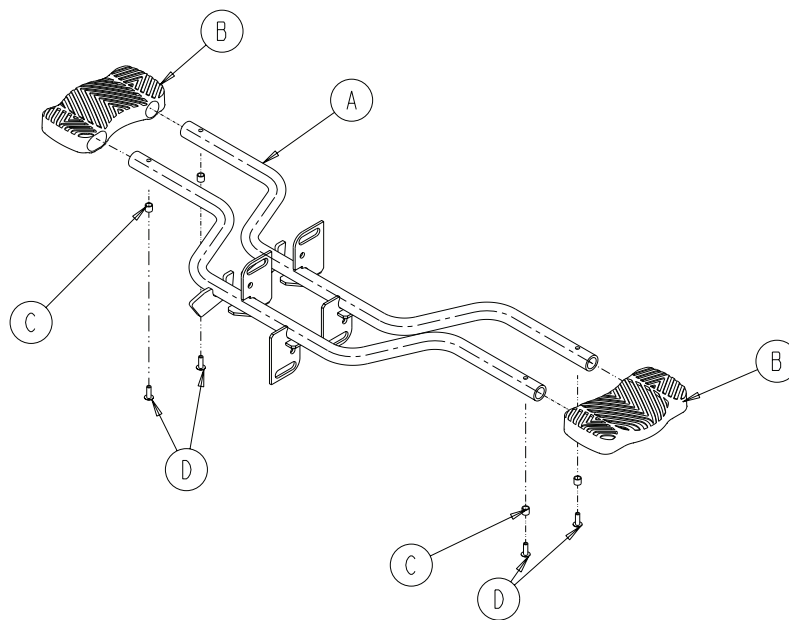
0715-201-213 Rev B (Reference only)



Item	Number	Name	Quantity
A	0016-059-000	Hex nut	1
B	0008-021-000	Socket head shoulder screw	1
C	0715-201-173	Brake connecting link	1
D	0715-301-221	Brake cam	1

Uni-lowering pedal assembly

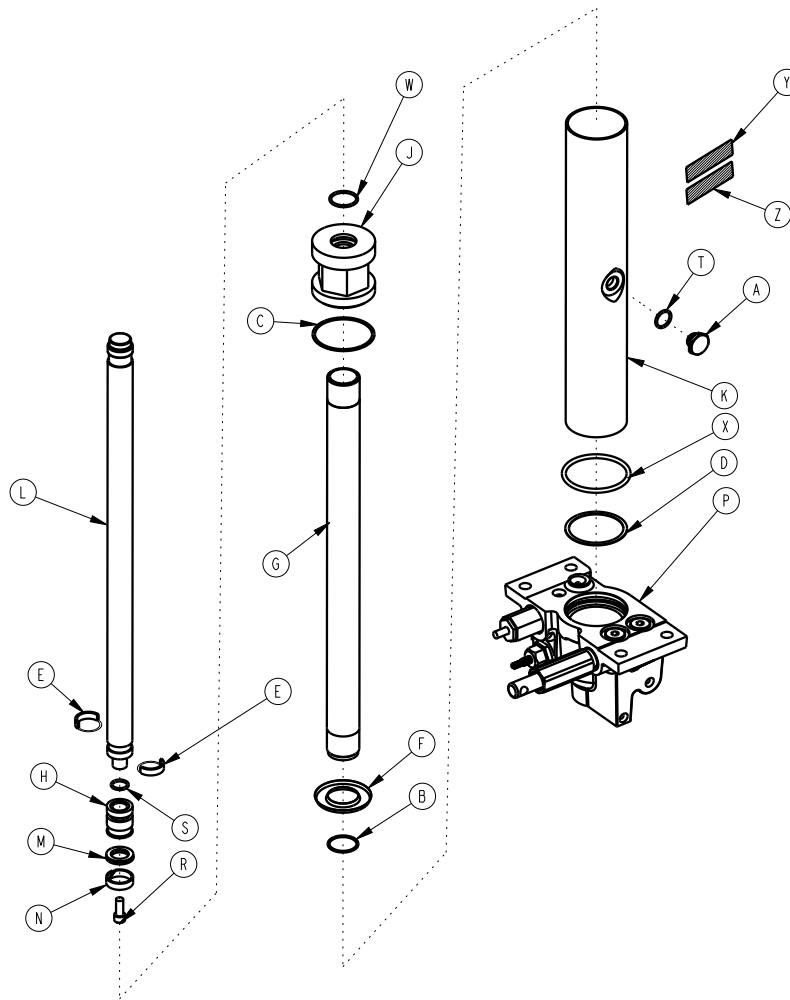
1061-500-000 Rev A (Reference only)



Item	Number	Name	Quantity
A	1210-201-152	Side release pedal weldment	2
B	1016-201-127	Uni-lowering pedal	2
C	0715-001-333	Release rod stop sleeve	4
D	0002-050-000	Blind rivet	4

Constant flow jack assembly

1231-070-210 Rev C (Reference only)

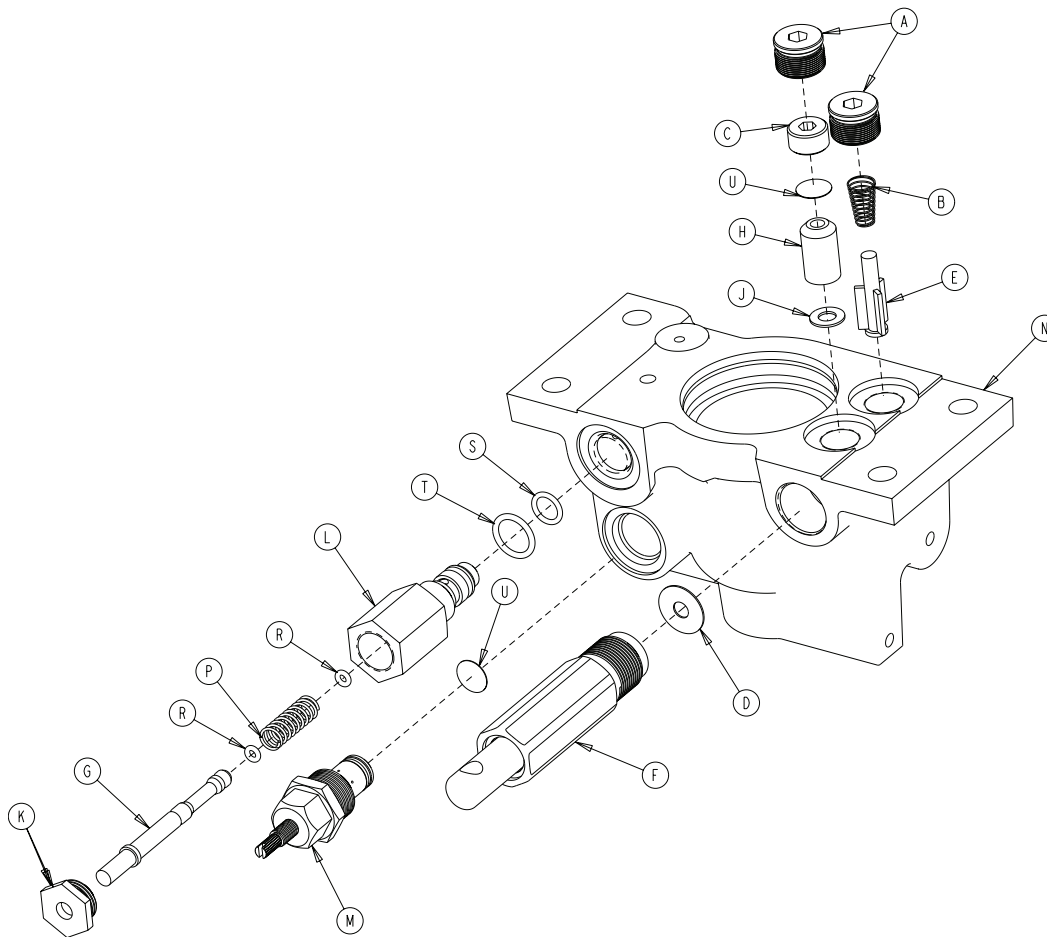


Item	Number	Name	Quantity
A	0388-100-039	Plug	1
B	0390-001-238	Actuator gasket	1
C	0390-001-243	Gasket	1
D	0390-001-244	Base gasket	1
E	0390-002-139	Retaining ring	2
F	0715-001-320	Jack screen	1
G	0715-001-323	Actuator cylinder	1
H	0715-001-331	Piston end	1
J	0715-001-340	Jack cap assembly	1
K	0715-001-422	Reservoir	1
L	0715-101-325	Actuator rod	1
M	0926-020-161	Parker packing	1
N	0926-020-162	Wear ring	1
P	5050-370-100	Constant flow jack base assembly (page 1 36)	1
R	0004-014-000	Socket head cap screw	1
S	0045-014-000	O-ring	1
T	0045-015-001	O-ring	1

Item	Number	Name	Quantity
W	0045-904-000	O-ring	1
X	0045-978-000	O-ring	1
Y	1231-070-211	Jack assembly label	1
Z	0921-001-252	Serial number label	1

Constant flow jack base assembly

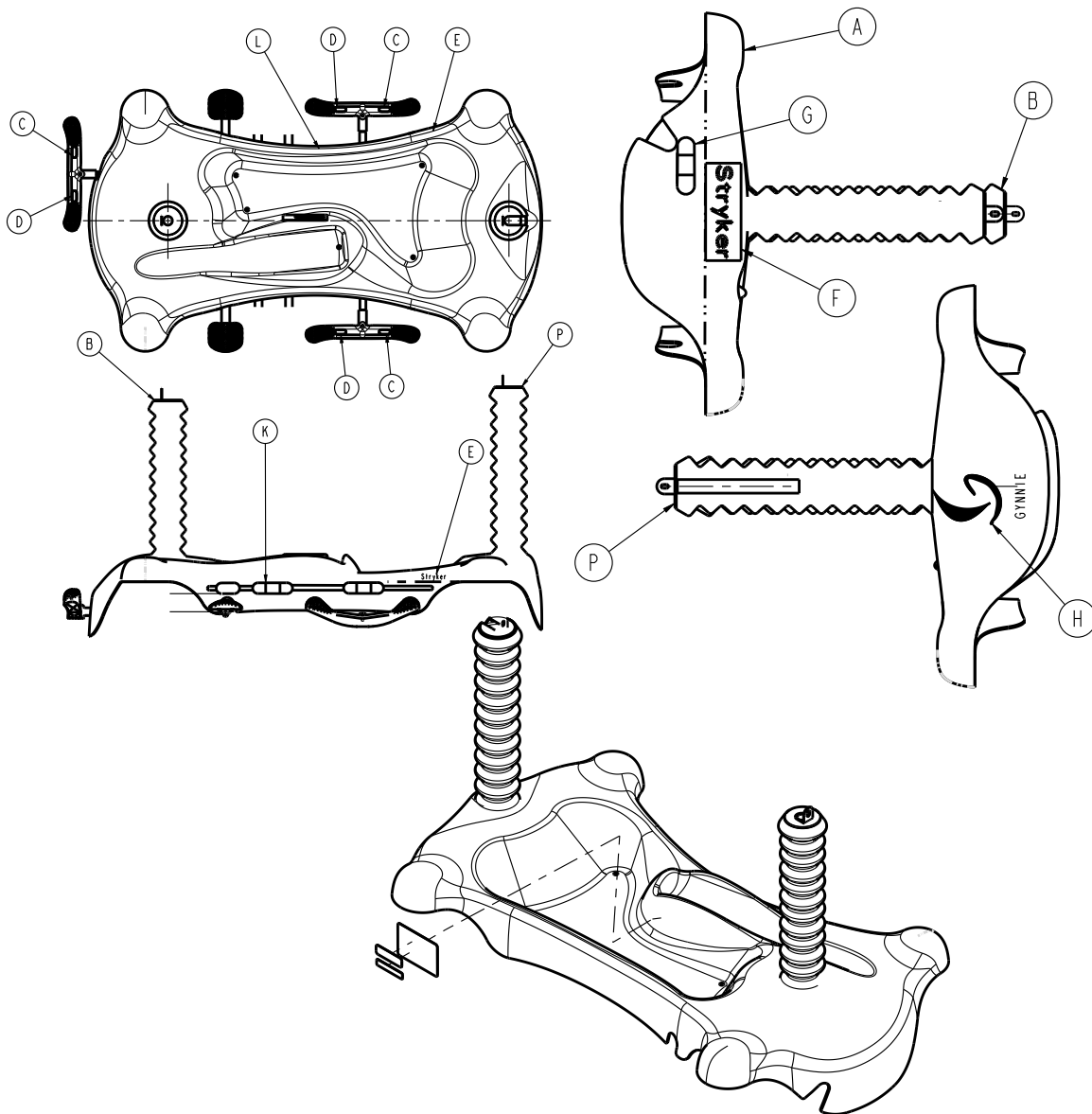
5050-370-100 Rev C (Reference only)



Item	Number	Name	Quantity
A	0048-147-000	Hex head o-ring plug	2
B	0390-002-134	Conical compression spring	1
C	0715-001-309	Valve plug	1
D	0715-001-329	Pump seal	1
E	0715-001-341	Poppet	1
F	0715-201-325	Pump piston assembly	1
G	0715-270-001	Pin	1
H	0926-020-153	Check valve	1
J	0926-020-154	Seal	1
K	1210-170-013	Base plug	1
L	2025-075-087	Pin housing	1
M	5050-170-050	Adjustable PC valve cartridge	1
N	5050-370-110	Jack base	1
P	0038-311-000	Compression spring	1
R	0045-006-000	O-ring	2
S	0045-966-000	O-ring	1
T	0045-967-000	O-ring	1
U	0715-001-321	Check valve screen	2

Hood assembly

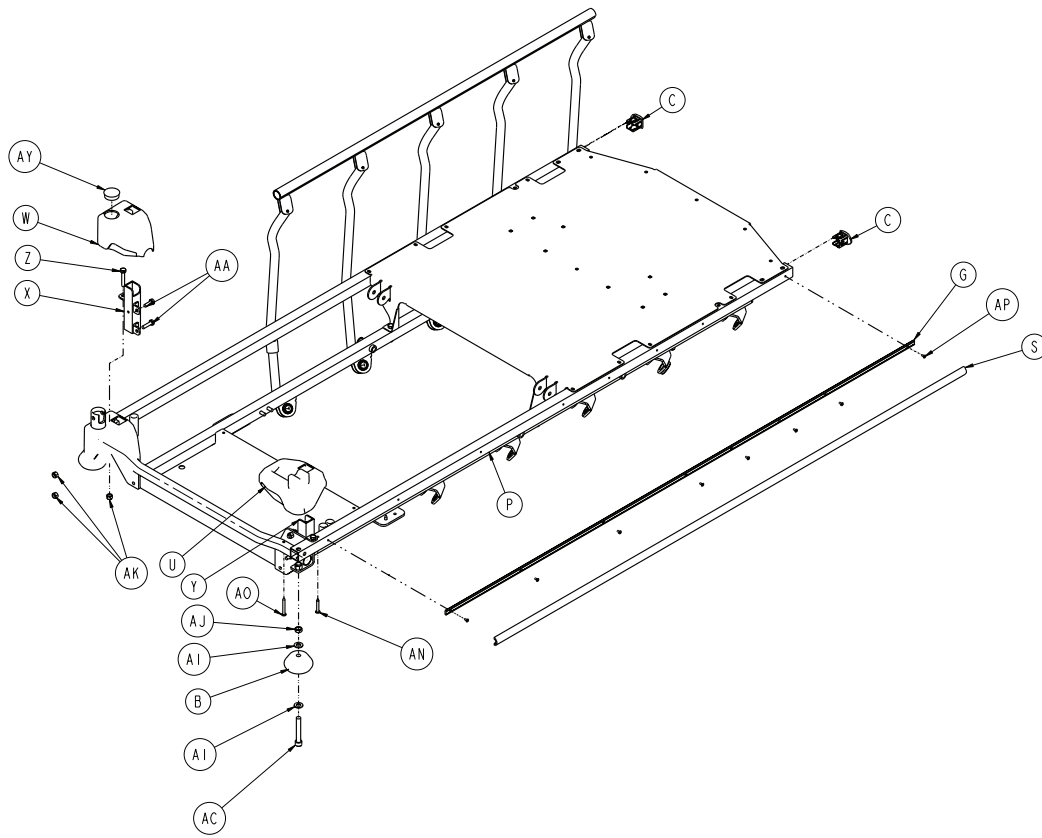
1061-700-300 Rev AA (Reference only)

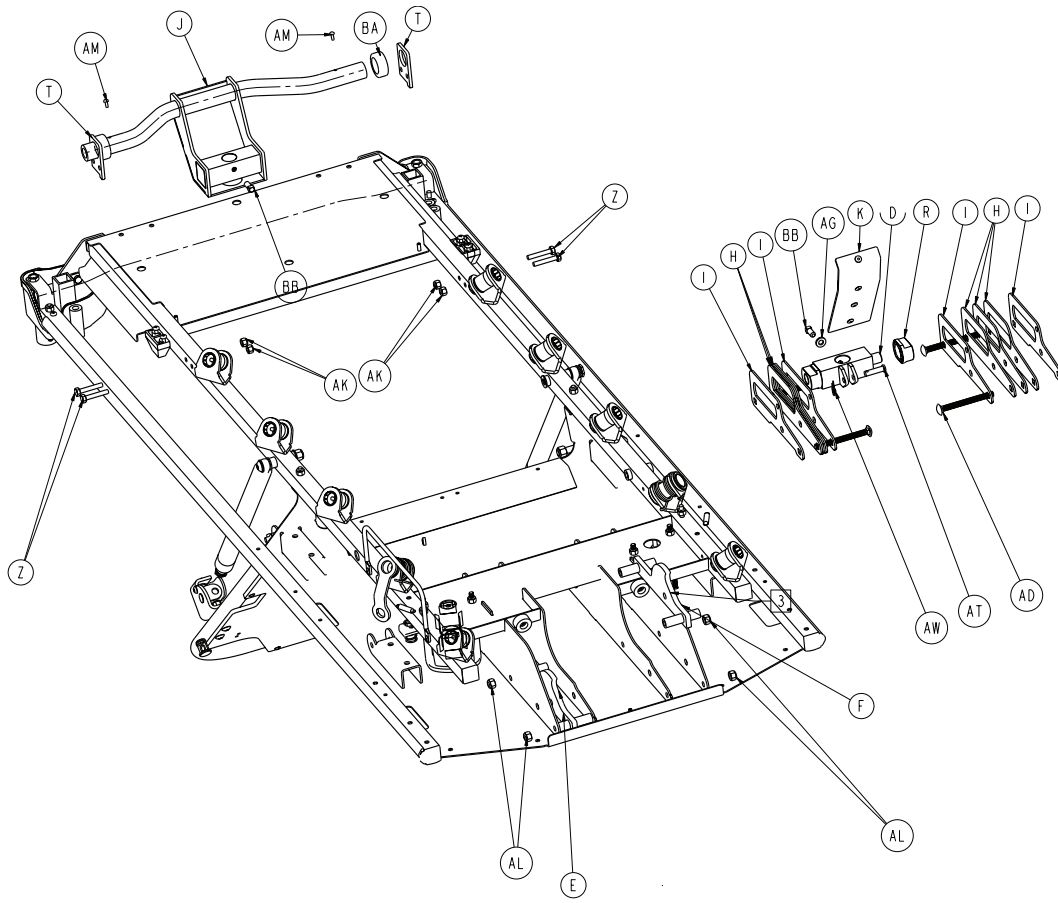


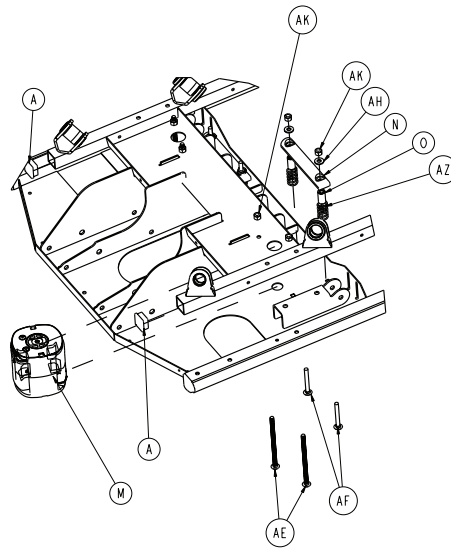
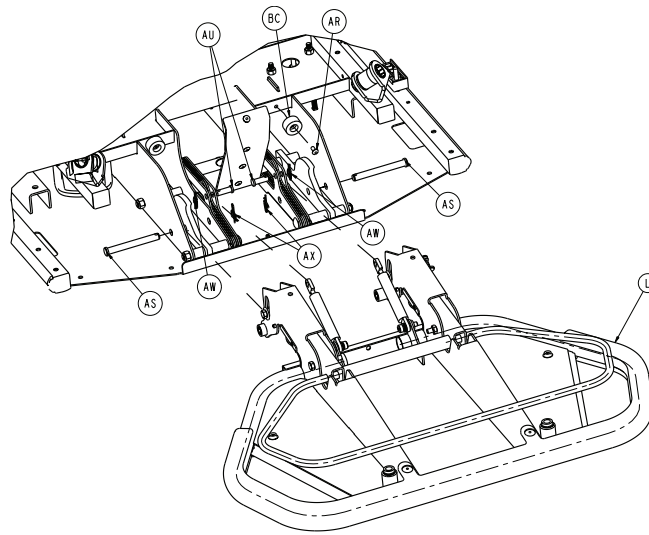
Item	Number	Name	Quantity
A	1061-200-001	Hood	1
B	0715-001-134	Bellows, head end	1
C	1210-201-335	Brake, red	3
D	1210-201-336	Steer, green	3
E	0946-201-060	Stryker logo	2
F	1061-201-060	Stryker logo, large	1
G	1061-700-123	Label, head end brake/steer control	1
H	1061-200-002	Gynnie label	1
K	1061-700-221	Side control, right	1
L	1061-700-222	Side control, left	1
P	1061-001-034	Bellows, foot end	1

Litter assembly

1061-030-010 Rev G (Reference only)





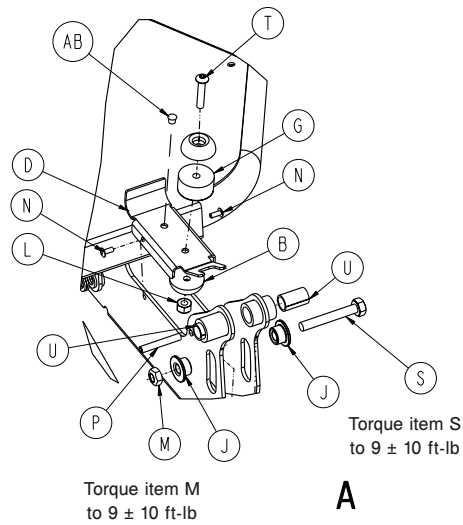
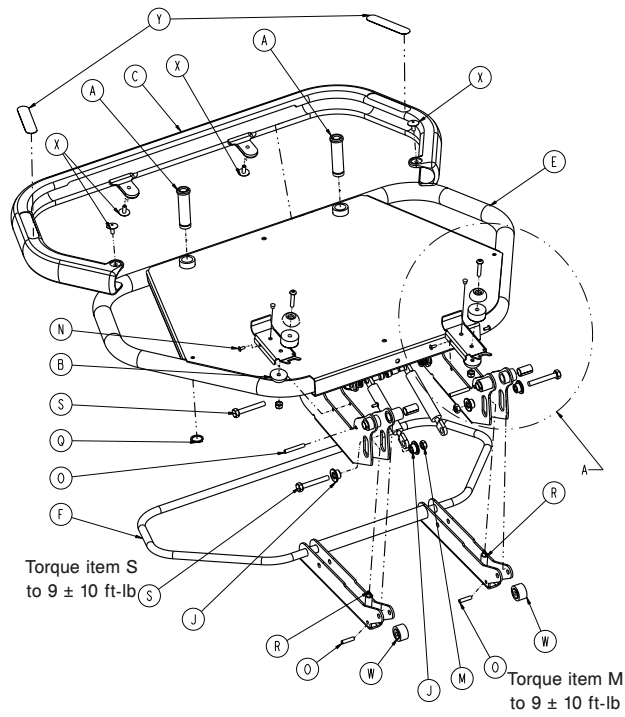


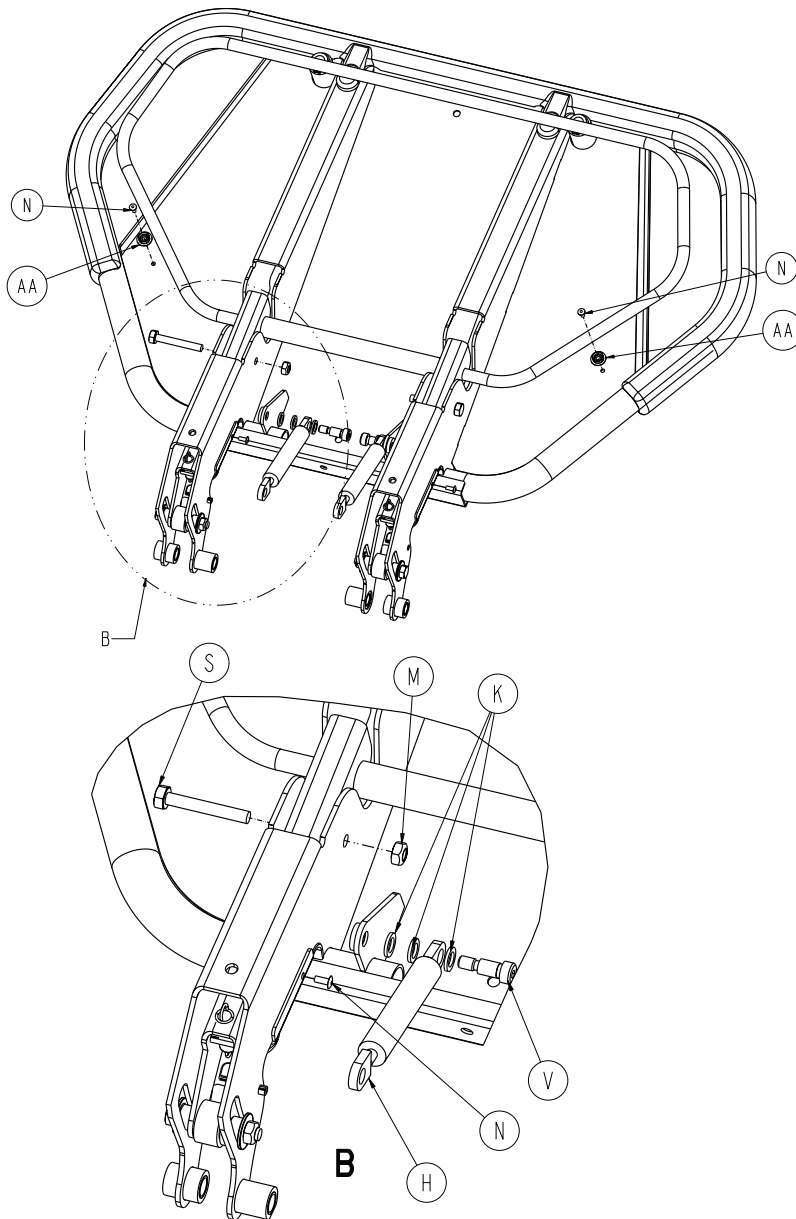
Item	Number	Name	Quantity
A	0037-010-000	Hole plug	2
B	0926-400-142	Bumper	2
C	1001-030-029	End plug	2
D	1061-001-121	Jack support weldment	1
E	1061-030-036	Foot section support weldment, left	1
F	1061-030-039	Foot section support weldment, right	1
G	1061-030-044	Bumper channel	2
H	1061-030-055	Jack support, inner	6
I	1061-030-056	Jack support, outer	4
J	1061-030-130	Jack support weldment	1
K	1061-035-005	Foot section limiter assembly	1
L	1061-040-010	Foot section assembly (page 42)	1
M	1061-050-030	Foot support pivot assembly - 1061-050-030 (page 45)	2
N	1061-050-145	Slide support	2
O	1061-050-146	Slide guide spacer	4
P	1071-120-010	Siderail to litter assembly	1
R	1061-201-129	Insert	2

Item	Number	Name	Quantity
S	1061-700-025	Siderail bumper	2
T	1211-030-018	Jack support bracket	2
U	1211-030-034	Hole/slot cover	1
W	1211-030-037	Hole/slot cover	1
X	1211-351-004	P.U.P handle receptacle, left	1
Y	1211-351-006	P.U.P. handle receptacle, right	1
Z	0003-047-000	Hex head cap screw	8
AA	0003-050-000	Hex head cap screw	4
AC	0004-330-000	Socket head cap screw	2
AD	0005-032-000	Carriage bolt	4
AE	0005-033-000	Carriage bolt	4
AF	0005-024-000	Carriage bolt	4
AG	0011-004-000	Washer	1
AH	0011-077-000	Washer	4
AI	0014-021-000	Washer	10
AJ	0015-027-000	Hex nut	2
AK	0016-028-000	Lock nut	14
AL	0016-036-000	Stover lock nut	6
AM	0022-010-000	Drive screw	2
AN	0023-282-000	Pan head tapping screw	2
AO	0023-283-000	Pan head tapping screw	2
AP	0025-038-000	Blind rivet	16
AR	0025-133-000	Blind rivet	2
AS	0026-279-000	Clevis pin	2
AT	0026-299-000	Clevis pin	1
AU	0026-300-000	Clevis pin	2
AW	0027-019-000	Rue ring cotter	3
AX	0027-022-000	Rue ring cotter	2
AY	0037-059-000	Heyco hole plug	1
AZ	0038-455-000	Compression spring	4
BA	0042-007-000	Collar assembly	2
BB	0046-003-000	Square head set screw	2
BC	0056-016-000	Bumper	2

Foot section assembly

1061-040-010 Rev K (Reference only)



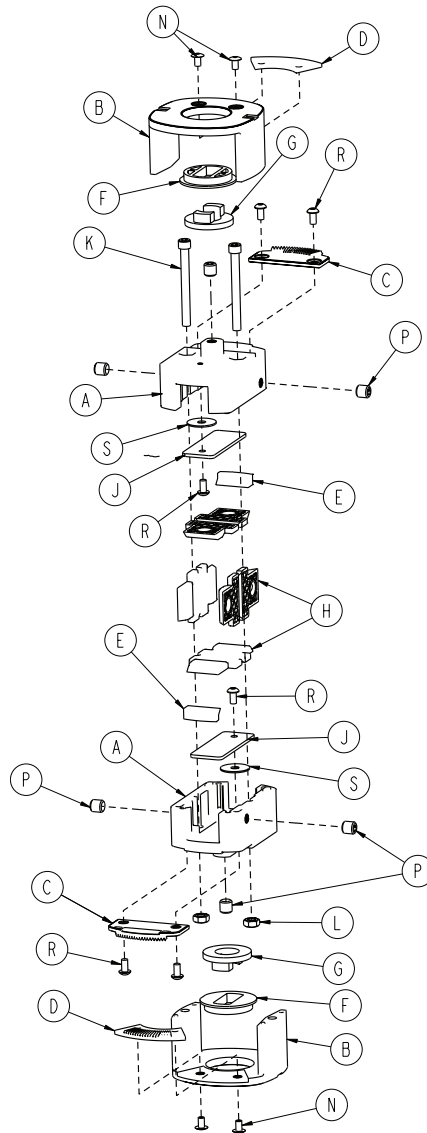


Item	Number	Name	Quantity
A	0721-040-026	Footboard receptacle	2
B	0946-001-155	Bumper	4
C	1061-040-018	Foot section bumper	1
D	1061-040-019	Foot section pivot cap	2
E	1061-040-020	Foot section weldment	1
F	1061-040-030	Foot section release bar weldment	1
G	1210-201-550	Skid	2
H	1210-201-671	Dampener	2
J	3000-300-099	Modified bushing	4
K	0014-003-000	Washer	6
L	0016-003-000	Hex nut	2
M	0016-028-000	Conelock nut	4
N	0025-040-000	Blind rivet	6
O	0026-118-000	Spring pin	2
P	0026-012-000	Spring pin	2

Item	Number	Name	Quantity
Q	0028-023-000	External snap ring	2
R	0038-355-000	Extension spring	2
S	0003-078-000	Hex head cap screw	4
T	0004-222-000	Socket button head cap screw	2
U	0052-312-000	Self-lubricating bearing	4
V	0008-049-000	Socket head shoulder bolt	2
W	0081-305-000	Track roller	2
X	0025-132-000	Flange rivet	4
Y	1061-700-040	Label, "do not sit on end"	2
AA	0029-003-000	Eyelet	2
AB	0037-074-000	Hole plug	2

Foot support pivot assembly - 1061-050-030

Rev G (Reference only)

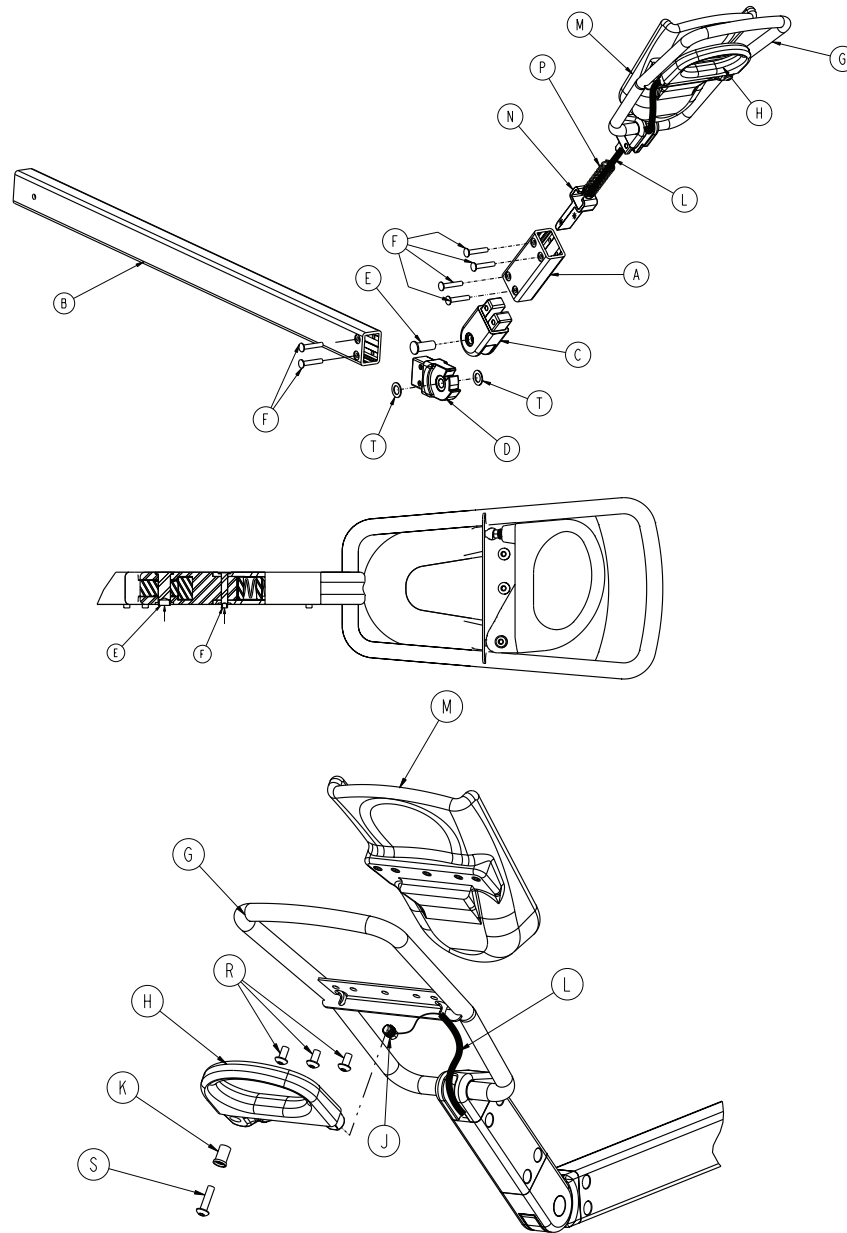


Item	Number	Name	Quantity
A	1061-050-045	Machined pivot	2
B	1061-050-151	Pivot mount	2
C	1061-050-160	Pivot teeth insert	2
D	1061-050-161	Mount teeth insert	2
E	1061-050-031	Slide stop	2
F	1061-050-051	Pivot bushing	2
G	1061-050-052	Rubber bushing	2
H	1061-050-056	Slide	4
J	1061-050-057	Slide plate	2
K	0004-102-000	Socket head cap screw	2
L	0016-118-000	Cone lock nut	2
N	0025-122-000	Rivet	4
P	0021-155-000	Set screw	6

Item	Number	Name	Quantity
R	0004-442-000	Button head Torx screw	6
S	0011-180-000	Washer	2

Foot support assembly, right - 1061-050-010

Rev E (Reference only)

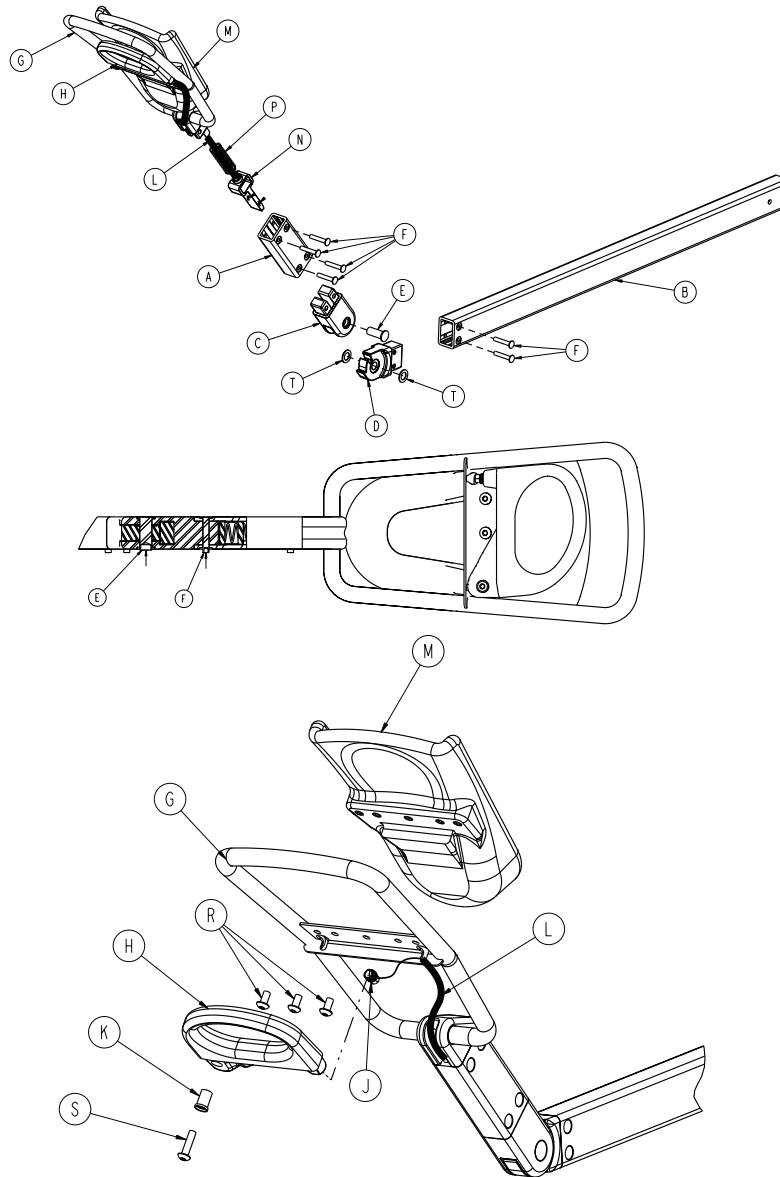


Item	Number	Name	Quantity
A	1061-050-023	Pivot tube	1
B	1061-050-024	Extension tube	1
C	1061-050-020	Outer pivot	1
D	1061-050-040	Inner pivot	1
E	1061-050-038	Pivot pin	1
F	1061-050-039	Flat head rivet	6
G	1061-050-012	Handle weldment	1
H	1061-050-035	Release handle	1
J	1061-050-044	Threaded cable insert	1
K	1061-050-054	Release handle spacer	1
L	1061-050-125	Cable assembly	1

Item	Number	Name	Quantity
M	1061-050-042	Molded cup assembly	1
N	1061-050-037	Key	1
P	0038-454-000	Compression spring	1
R	0004-442-000	Button head Torx screw	3
S	0004-443-000	Button head Torx screw	1
T	0014-009-000	Flat nylon washer	2

Foot support assembly, left - 1061-050-011

Rev E (Reference only)

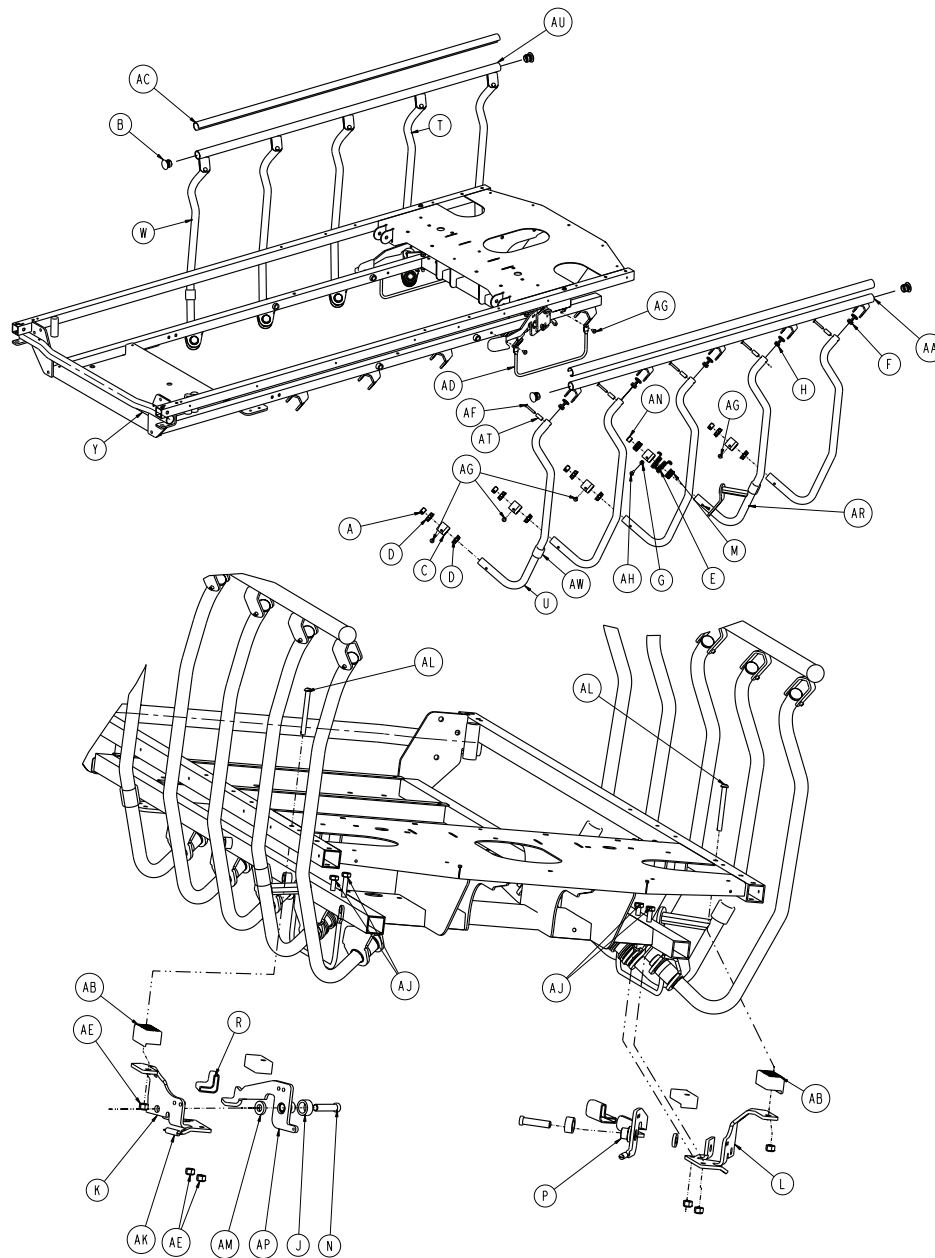


Item	Number	Name	Quantity
A	1061-050-023	Pivot tube	1
B	1061-050-024	Extension tube	1
C	1061-050-02	Outer pivot	1
D	1061-050-040	Inner pivot	1
E	1061-050-038	Pivot pin	1
F	1061-050-039	Flat head rivet	6
G	1061-050-012	Handle weldment	1
H	1061-050-035	Release handle	1
J	1061-050-044	Threaded cable insert	1
K	1061-050-054	Release handle spacer	1
L	1061-050-125	Cable assembly	1
M	1061-050-042	Molded cup assembly	1
N	1061-050-037	Key	1

Item	Number	Name	Quantity
P	0038-454-000	Compression spring	1
R	0004-442-000	Button head Torx screw	3
S	0004-443-000	Button head Torx screw	1
T	0014-009-000	Flat nylon washer	2

Siderail to litter assembly

1061-120-010 Rev H (Reference only)

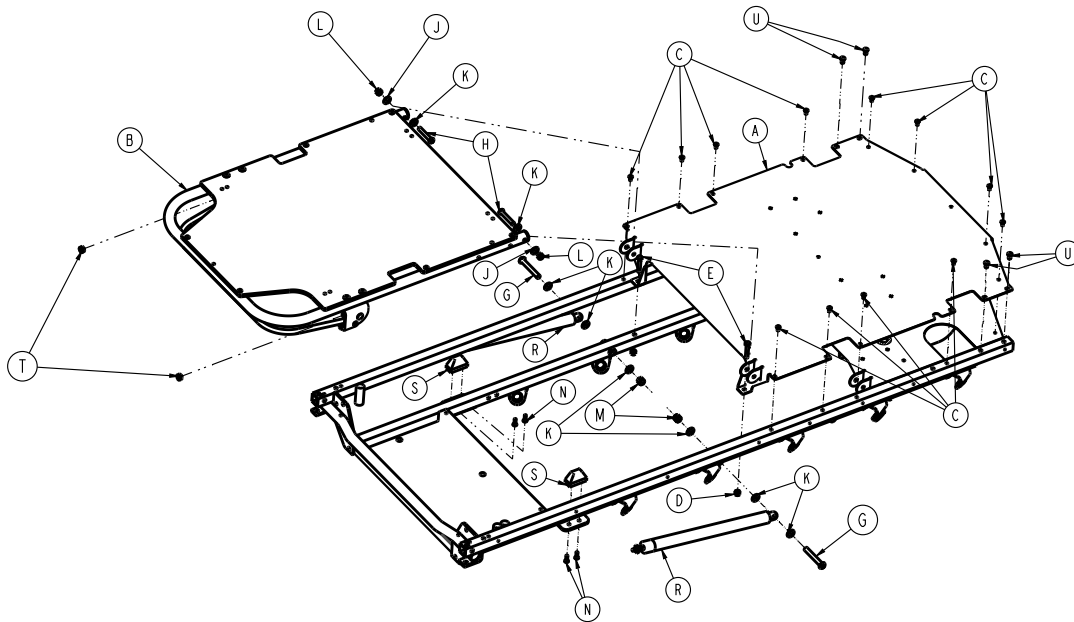


Item	Number	Name	Quantity
A	0037-215-000	Dome plug	8
B	1001-226-100	End cap assembly	4
C	1001-226-015	Pivot sleeve	10
D	1001-226-016	Pivot bearing	16
E	1001-226-017	Siderail spring	2
F	1001-226-101	Top plug assembly	8
G	1001-226-020	Spring spacer	2
H	1001-226-102	Top plug assembly	2
J	1001-226-045	Latch spacer	2
K	1001-226-04	Latch pivot, right	1

Item	Number	Name	Quantity
L	1001-226-047	Latch pivot, left	1
M	1001-226-116	Pivot bearing	4
N	1001-226-142	Latch pin	2
P	1001-226-153	Latch plate weldment, left	1
R	1001-226-158	Latch cover	2
T	1001-326-033	Lock spindle weldment, left	1
U	1001-326-027	Spindle, right	4
W	1001-326-028	Spindle, left	4
Y	1061-030-020	Litter frame weldment	1
AA	1061-226-040	Top rail weldment, right	1
AB	1061-226-050	Bracket spacer	2
AC	1061-226-063	Top rail cap	2
AD	1211-030-046	Foley bag rack	2
AE	0016-028-000	Hex nut	6
AF	0025-033-000	Semi-tubular rivet	10
AG	0025-079-000	Blind rivet	12
AH	0025-086-000	Blind rivet	2
AJ	0003-078-000	Hex head cap screw	4
AK	0038-422-000	Extension spring	2
AL	0004-451-000	Torx button head cap screw	2
AM	0052-017-000	Spacer	2
AN	0059-100-000	Heyco hole plug	2
AP	1001-226-152	Latch plate weldment, right	1
AR	1001-326-031	Lock spindle weldment, right	1
AT	1010-226-082	Top rail bearing	10
AU	1061-226-030	Top rail weldment, left	1
AW	1001-226-019	Rubber stop	4

Seat/Fowler backrest assembly - 1061-131-100

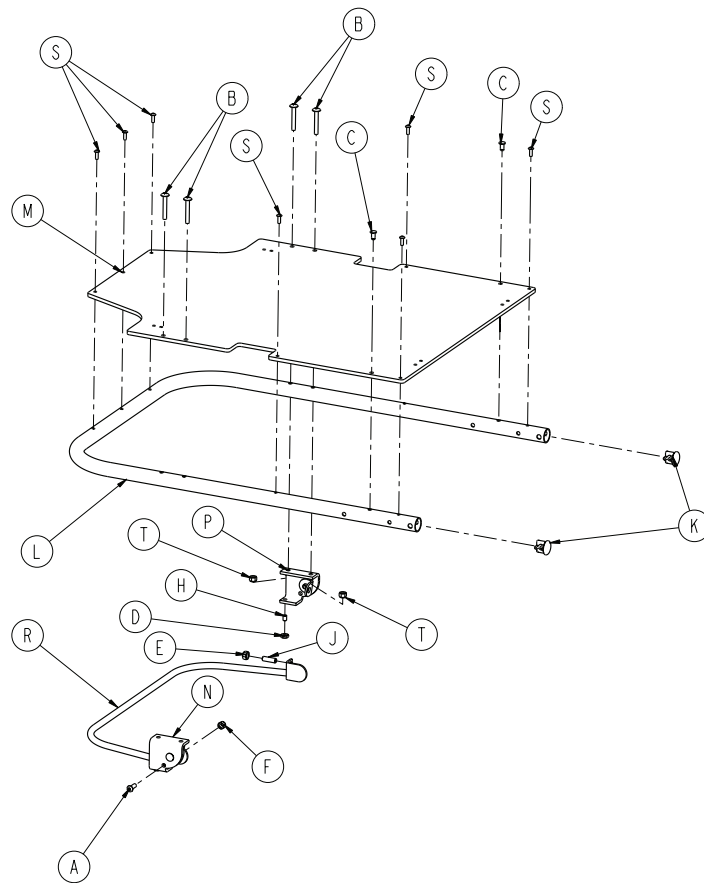
Rev M (Reference only)



Item	Number	Name	Quantity
A	1061-230-120	Ed butt skin weldment	1
B	1210-031-120	<i>Pneumatic Fowler assembly - 1210-031-120 (page 54)</i>	1
C	0025-172-000	Blind rivet	12
D	0016-028-000	Stover lock nut	2
E	0003-047-000	Hex cap screw	2
G	0004-182-000	Button head cap screw	2
H	0004-183-000	Button head cap screw	2
J	0014-020-000	Washer	2
K	0014-021-000	Washer	8
L	0016-036-000	Stover lock nut	2
M	0016-035-000	Stover lock nut	2
N	0023-256-000	Pan head screw	4
R	1010-031-078	Gas cylinder	2
S	1001-031-031	Pneumatic Fowler rest	2
T	0015-060-000	Hex jam nut	2
U	0025-120-000	Rivet	4

Pneumatic Fowler assembly - 1210-031-120

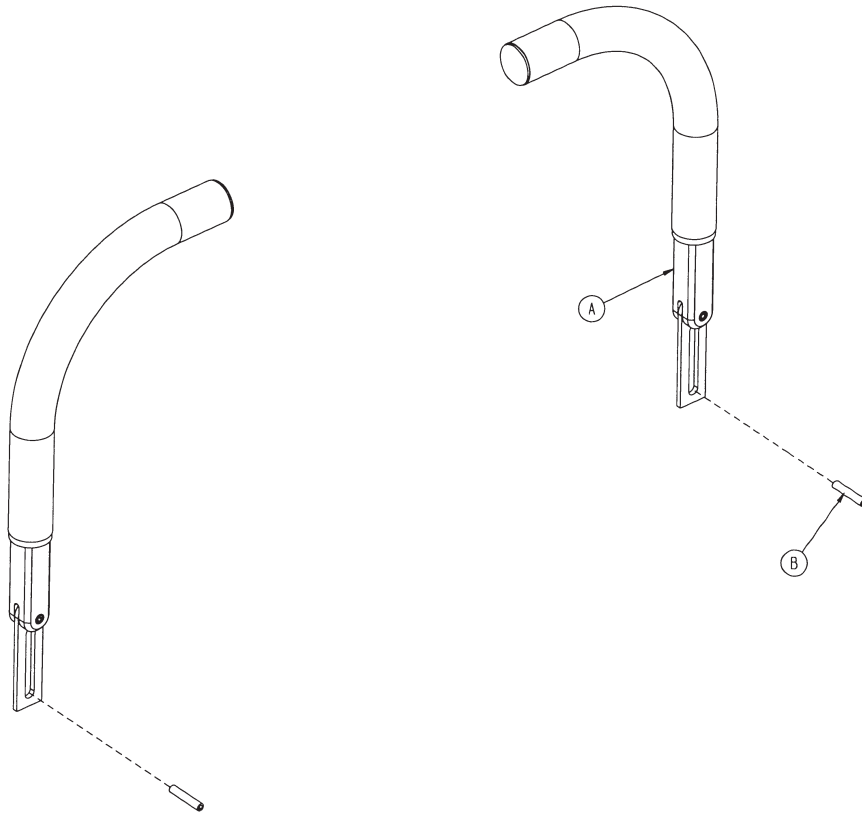
Rev F (Reference only)



Item	Number	Name	Quantity
A	0004-161-000	Button head cap screw	2
B	0007-071-000	Truss head machine screw	4
C	0025-120-000	Pop rivet	2
D	0015-037-000	Hex jam nut	2
E	0015-050-000	Hex nut	2
F	0016-028-000	Fiberlock hex nut	2
H	0021-125-000	Set screw	2
J	0021-126-000	Set screw	2
K	1001-001-036	Hole plug	2
L	1001-031-013	Fowler backrest tube	1
M	1010-231-012	Fowler backrest skin	1
N	1210-031-106	Outer housing assembly, right	1
P	1210-031-107	Outer housing assembly, left	1
R	1210-031-118	Trip bar weldment	1
S	0025-171-000	Mega grip blind rivet	7
T	0016-118-000	Stover locknut	4

Head end steering handles - 1711-151-000

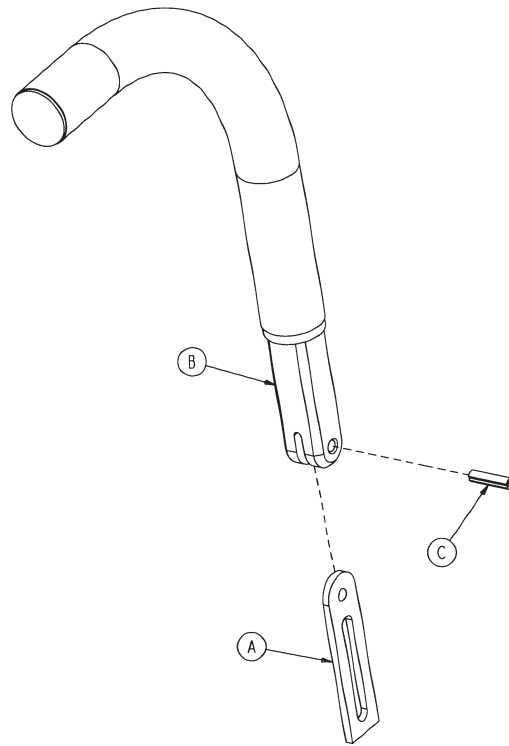
Rev B (Reference only)



Item	Number	Name	Quantity
A	1211-351-010	Push handle assembly (page 56)	2
B	0026-114-000	Spring pin	2

Push handle assembly

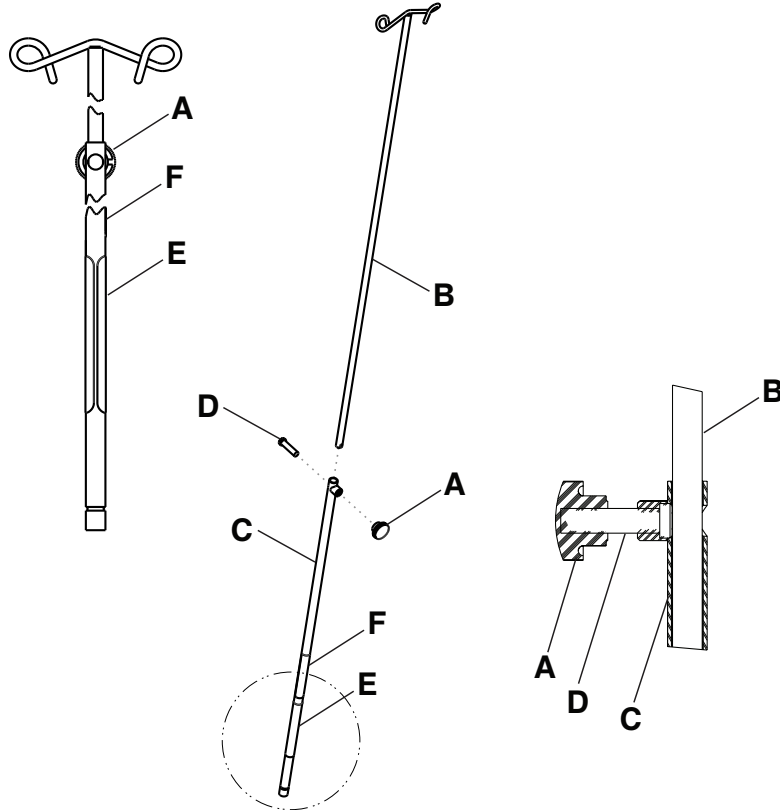
1211-351-010 Rev A (Reference only)



Item	Number	Name	Quantity
A	1010-354-024	P.U.P stop link	1
B	1211-151-018	P.U.P sleeve assembly	1
C	0026-118-000	Spring pin	1

HAVASU™ IV pole, removable - 0390-025-000

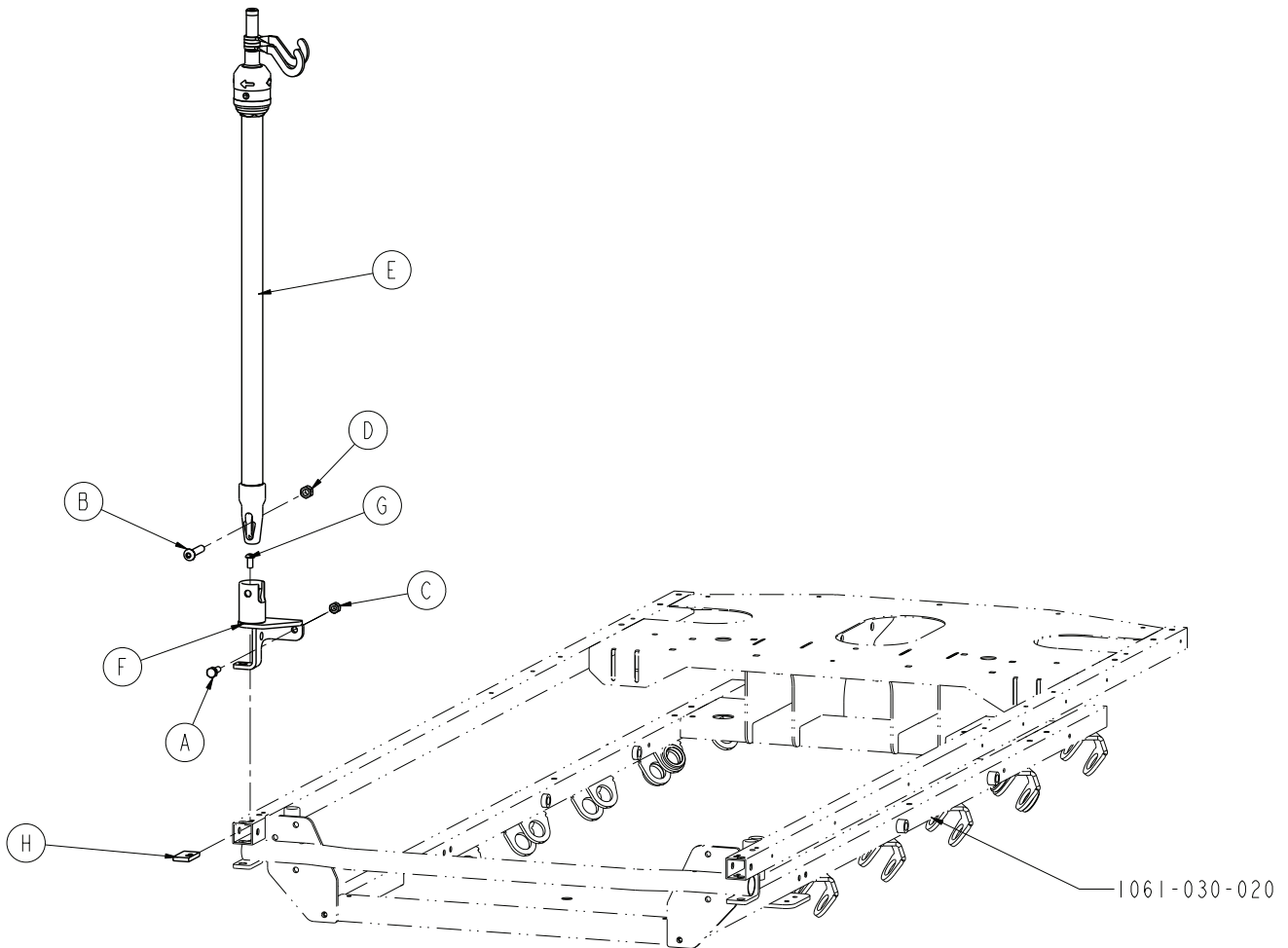
Rev AA (Reference only)



Item	Number	Name	Quantity
A	0390-003-056	Knob	1
B	0390-003-053	Double IV assembly	1
C	0393-003-043	Chrome tube assembly	1
D	0004-496-000	Socket head cap screw	1
E	0390-125-011	Label, IV pole, removable	1
F	108900350901	Label, EAR	1

Two-stage IV pole assembly - 1061-110-000

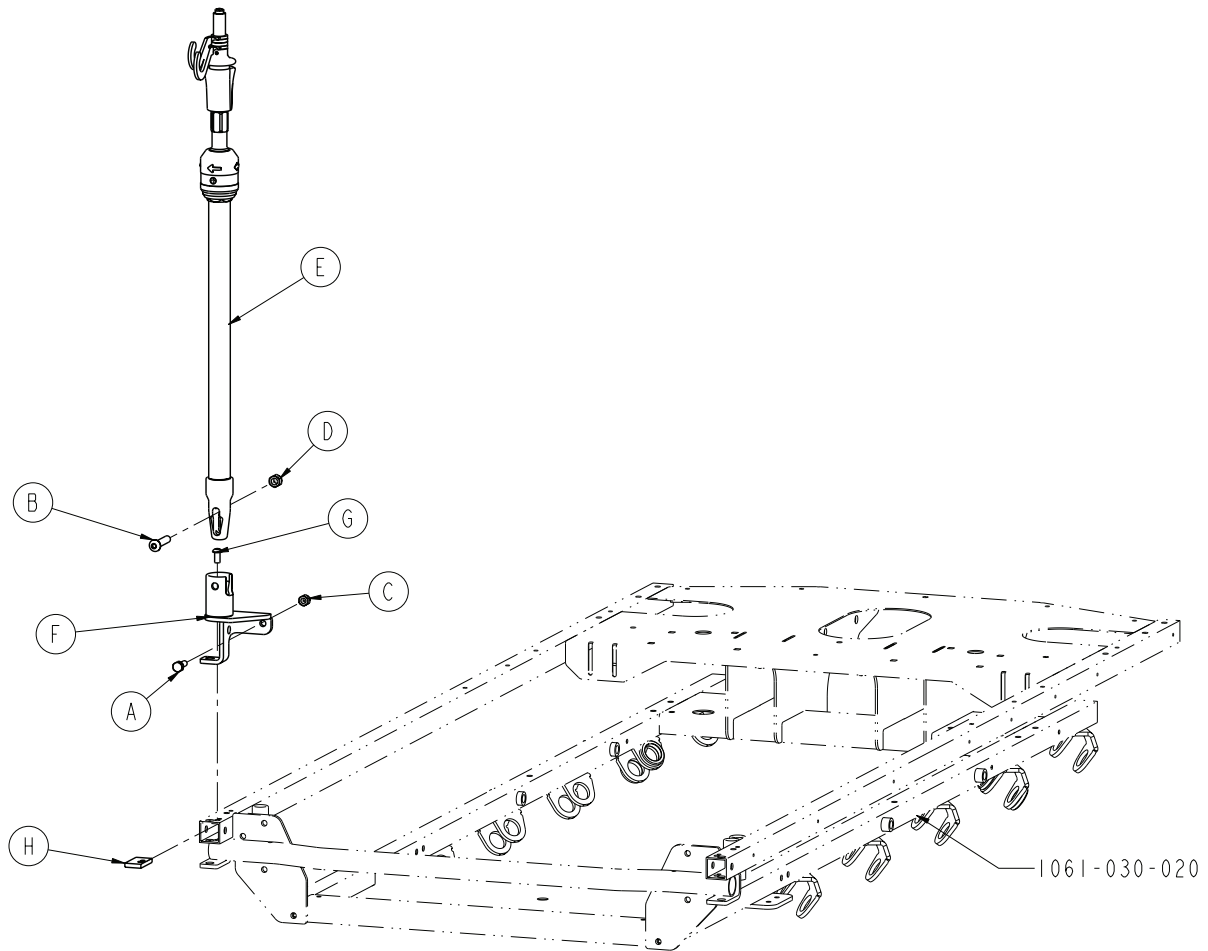
Rev B (Reference only)



Item	Number	Name	Quantity
A	0003-050-000	Hex head cap screw	1
B	0004-199-000	Button head cap screw	1
C	0016-028-000	Hex nut	1
D	0016-036-000	Nylock hex nut	1
E	1211-210-010	Two-stage IV pole assembly	1
F	1211-410-112	IV pivot weldment	1
G	0004-325-000	Socket button head cap screw	1
H	1001-459-017	Support plate	1

Three-stage IV pole assembly - 1061-110-001

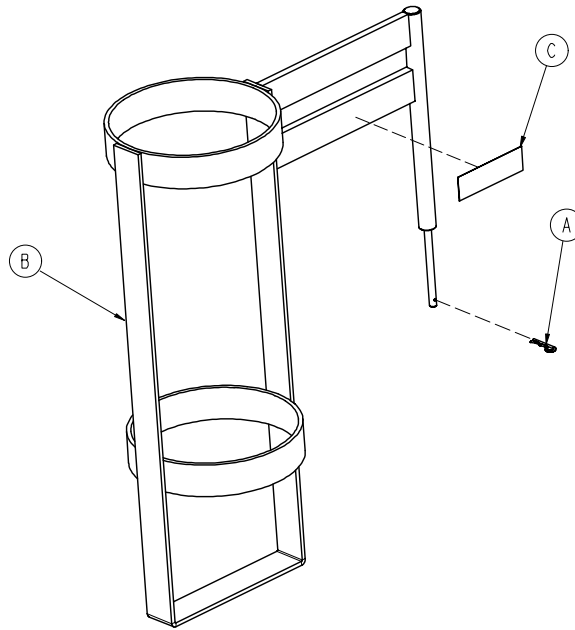
Rev B (Reference only)



Item	Number	Name	Quantity
A	0003-050-000	Hex head cap screw	1
B	0004-199-000	Button head cap screw	1
C	0016-028-000	Hex nut	1
D	0016-036-000	Nylock hex nut	1
E	1211-211-010	Three-stage IV pole assembly	1
F	1211-410-112	IV pivot weldment	1
G	0004-325-000	Socket button head cap screw	1
H	1001-459-017	Support plate	1

Upright oxygen bottle holder assembly - 1020-130-000

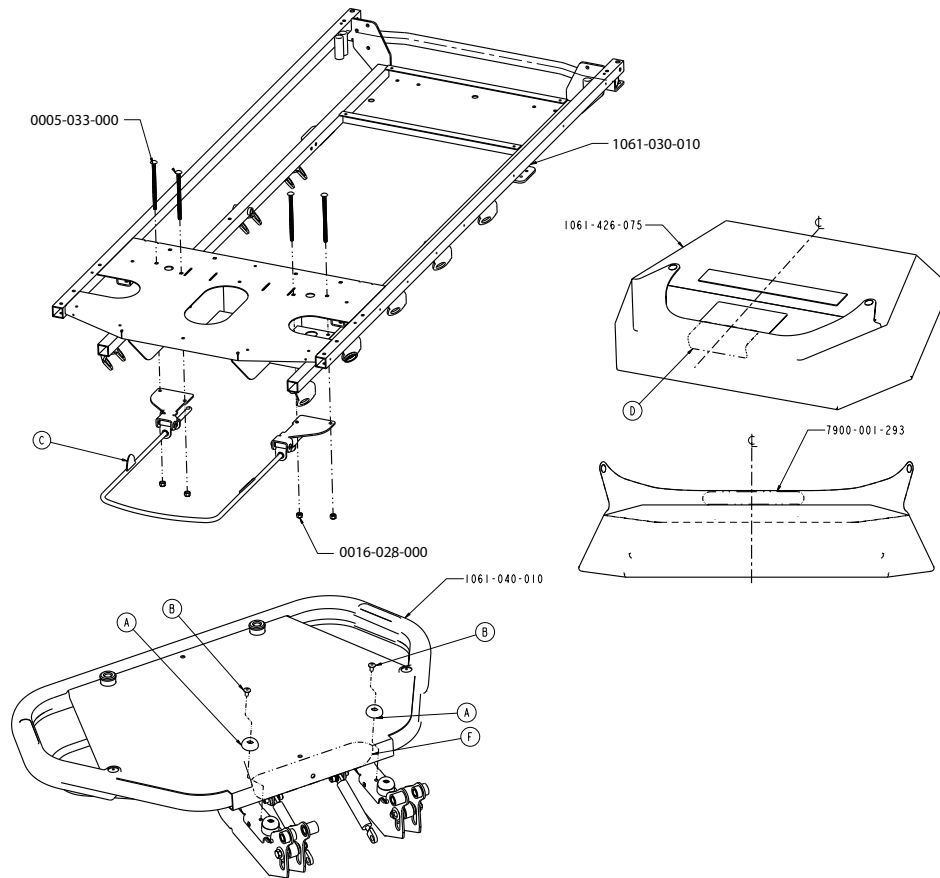
Rev A (Reference only)



Item	Number	Name	Quantity
A	0027-030-000	Hair pin cotter	1
B	1020-030-111	Upright bottle holder	1
C	1020-030-117	Label, oxygen bottle holder	1

Waste basin holder assembly - 1061-700-001

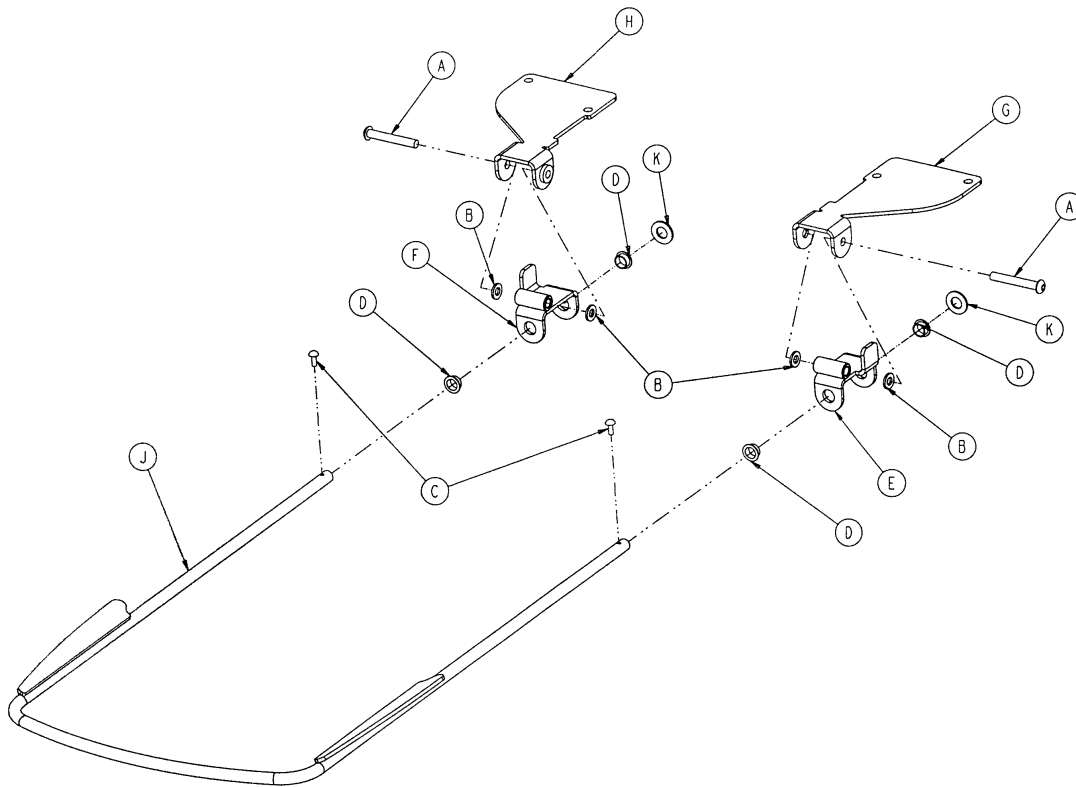
1061-120-000 Rev C (Reference only)



Item	Number	Name	Quantity
A	0946-001-155	Bumper	2
B	0025-079-000	Blind rivet	2
C	1061-120-032	Hoop sub assembly	1
D	1061-120-033	Abrasion resistant pad	1
F	7900-001-102	2" Velcro® pile	6"

Hoop assembly - 1061-120-032

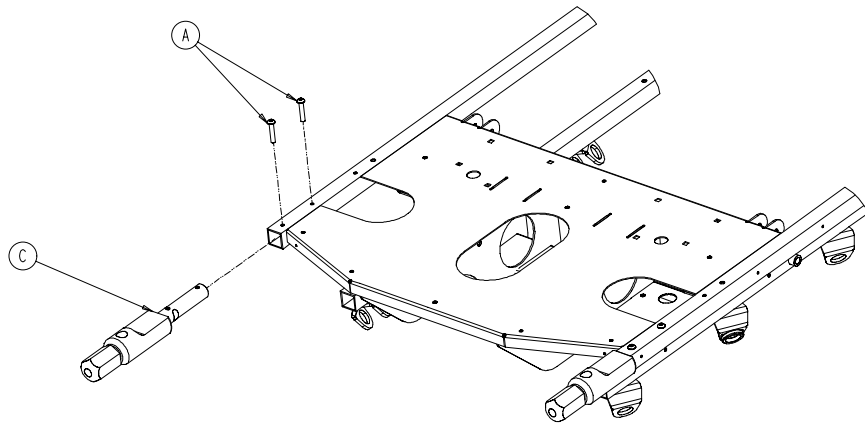
Rev B (Reference only)



Item	Number	Name	Quantity
A	0004-204-000	Button head cap screw	2
B	0014-002-000	Nylon washer	4
C	0022-010-000	Drive pin	2
D	0052-824-000	Nyliner	4
E	1061-120-024	Hoop pivot, left	1
F	1061-120-025	Hoop pivot, right	1
G	1061-120-029	Pivot support, left	1
H	1061-120-030	Pivot support, right	1
J	1061-120-020	Hoop weldment	1
K	0014-021-000	Nylon washer	2

Calf support mounting brackets - 1061-130-000

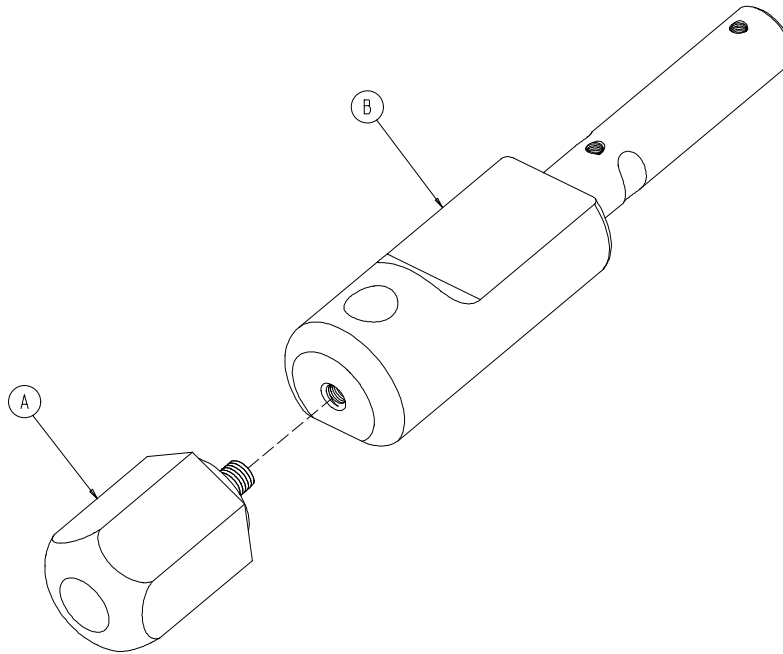
Rev A (Reference only)



Item	Number	Name	Quantity
A	0004-198-000	Button head cap screw	4
C	1061-130-001	Calf support mount assembly (page 64)	2

Calf support mount assembly

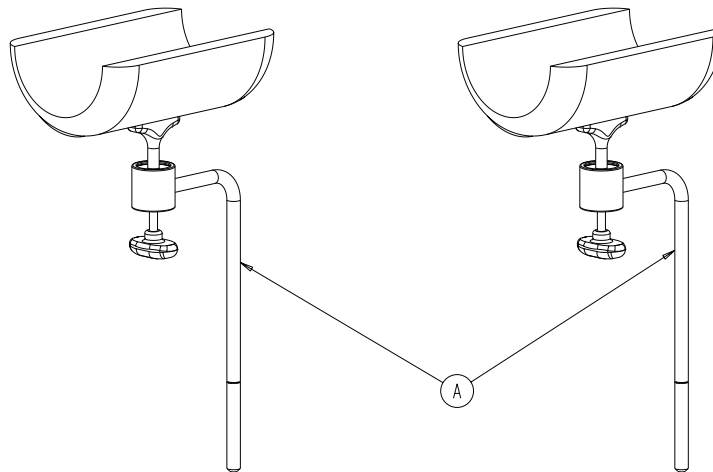
1061-130-001 Rev A (Reference only)



Item	Number	Name	Quantity
A	1061-120-002	Knob assembly	1
B	1061-120-001	Calf support	1

Free standing calf rest - 1061-040-036

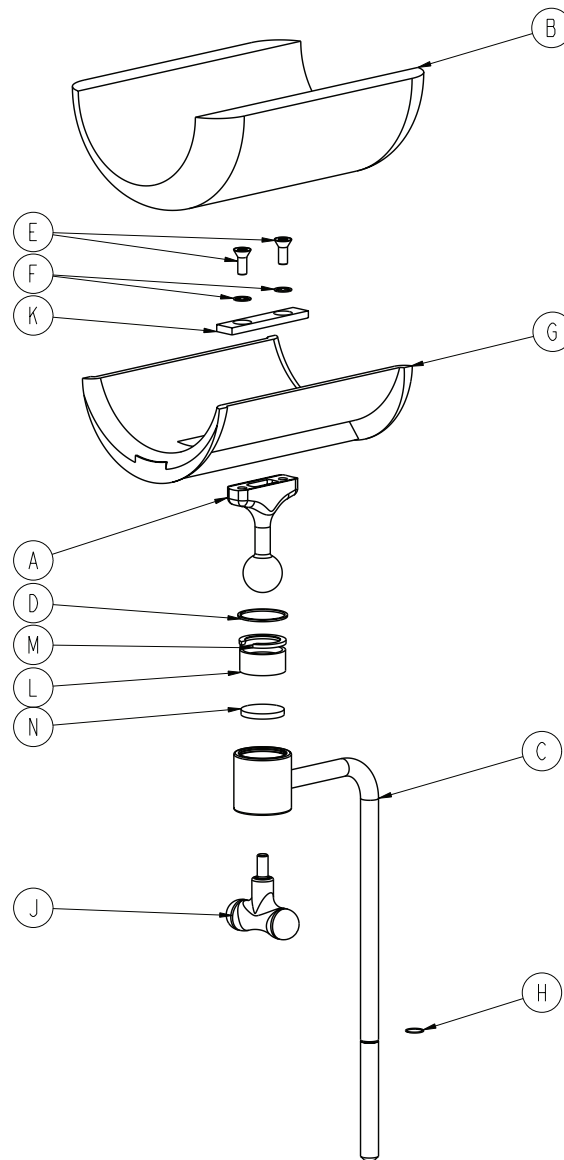
Rev A (Reference only)



Item	Number	Name	Quantity
A	1061-040-035	Free standing calf rest assembly (page 66)	2

Free standing calf rest assembly

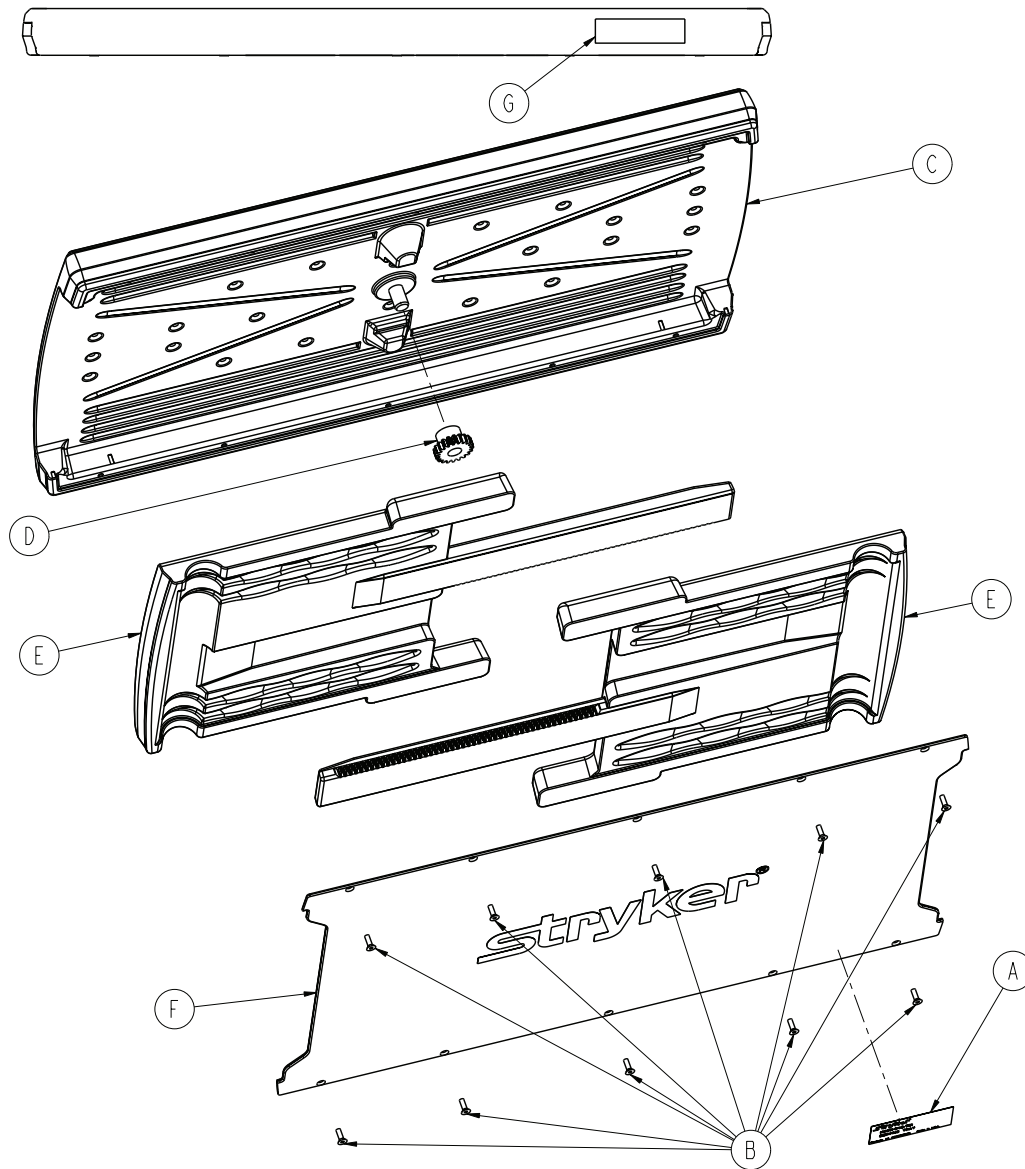
1061-040-035 Rev D (Reference only)



Item	Number	Name	Quantity
A	1060-001-155	Ball post	1
B	4700-041-010	Calf rest cover assembly	1
C	5000-240-171	Calf support weldment	1
D	8800-200-800	Spiral retaining ring	1
E	0001-097-000	Black oxide	2
F	0013-024-000	Internal lock washer	2
G	8805-906-900	Leg rest	1
H	8806-124-800	Leg support ring	1
J	0024-044-000	Knob	1
K	1060-001-157	Leg support mounting plate	1
L	8812-670-000	Leg support jaw	1
M	8812-680-000	Split ring	1
N	8812-690-000	Leg support pressure disc	1

Serving tray - 0785-045-700

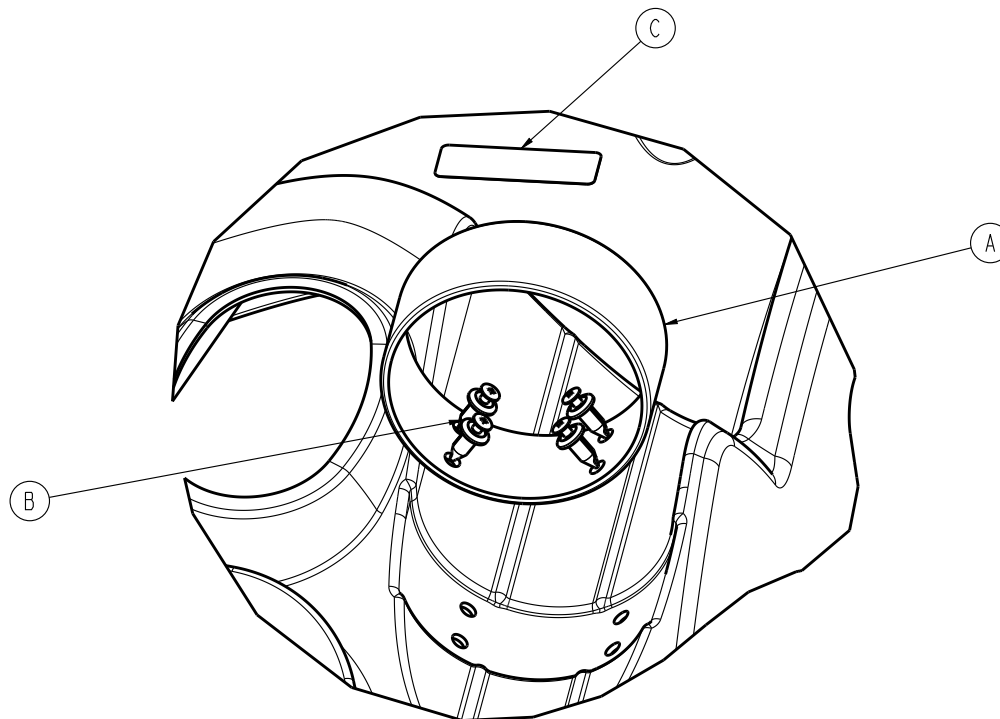
Rev C (Reference only)



Item	Number	Name	Quantity
A	0785-045-701	Serving tray label	1
B	0785-045-704	Flat head Torx screw	10
C	0785-045-705	Serving tray top	1
D	0785-045-706	Serving tray pinion	1
E	0785-045-710	Serving tray slider	2
F	0785-045-715	Serving tray cover	1
G	0785-045-403	Label, weight capacity	1

Oxygen bottle retainer assembly - 1040-010-090

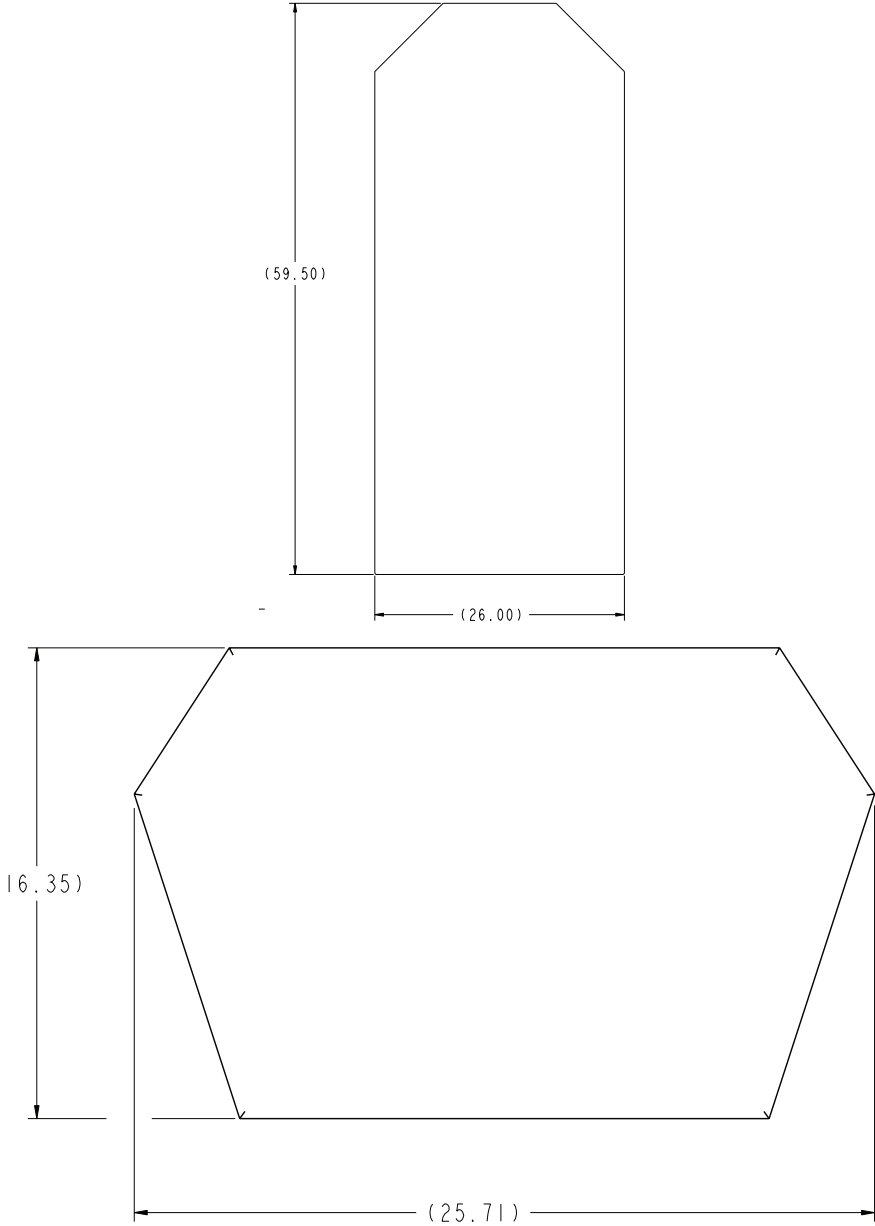
1040-010-095 Rev B (Reference only)



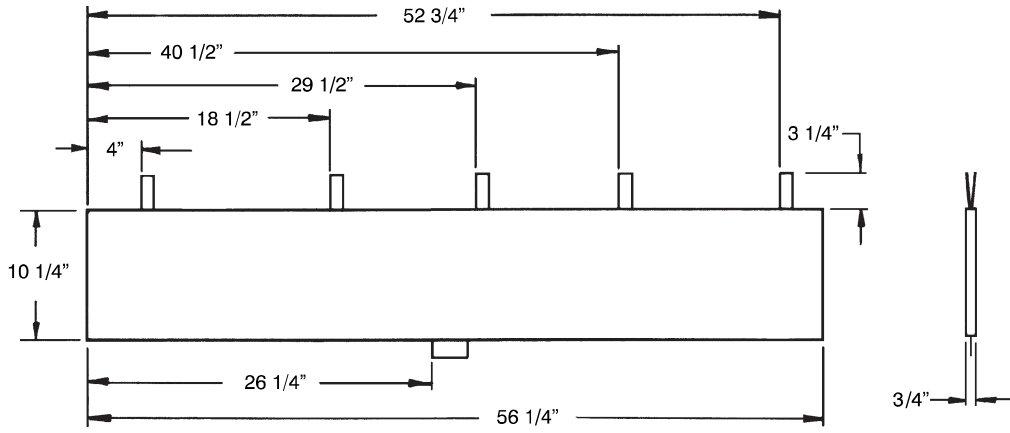
Item	Number	Name	Quantity
A	1040-010-091	Oxygen bottle retainer hoop	1
B	1040-010-092	Scrnut assembly	4
C	0747-610-901	Label, specification, oxygen bottle retaining ring	1

Mattresses and siderail pads

(Reference only)



Foot pad	1061-426-075
----------	--------------

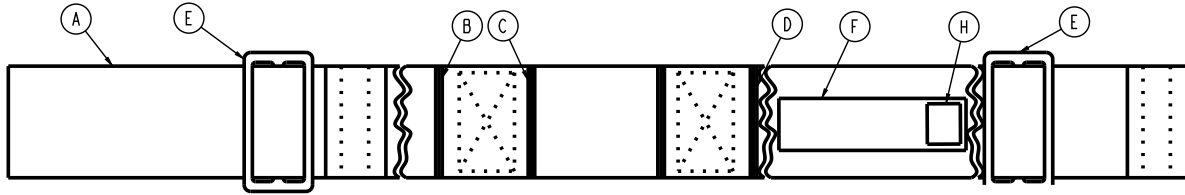


Siderail pad set

1001-052-000

Ankle restraint strap - 0946-043-001

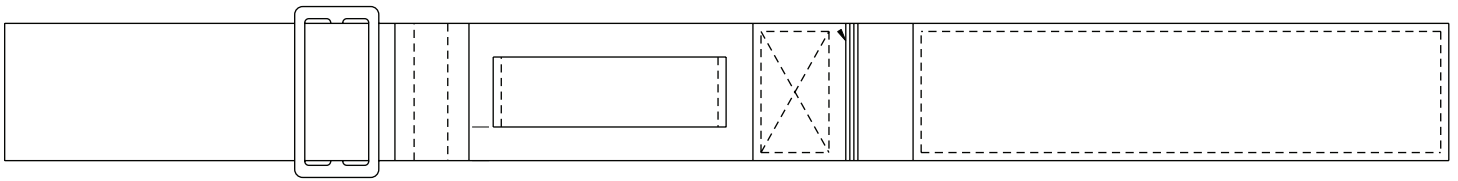
Rev AC (Reference only)



Item	Number	Name	Quantity
A	7900-001-011	Nylon webbing	1
B	7900-001-011	Nylon webbing	2
C	7900-001-101	Velcro® pile	2
D	7900-001-100	Velcro® hook	2
E	0390-057-014	Buckle	2
F	0946-001-085	Label, ankle restraint	1
H	0036-019-968	Label, JAC restraint symbols	1

Wrist restraint strap - 0946-044-000

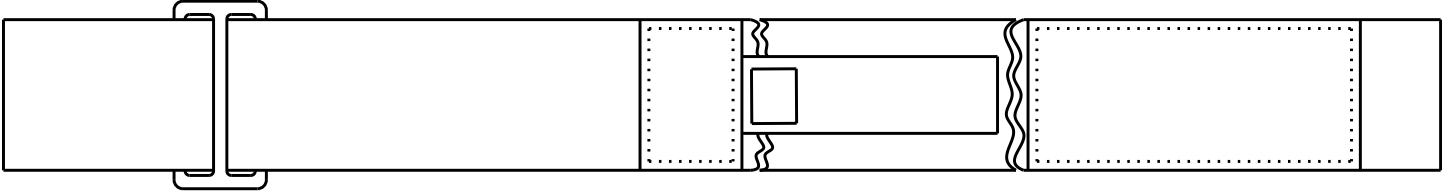
Rev C (Reference only)



Number	Name
0946-044-001	Wrist restraining strap

Body restraint strap - 0390-019-000

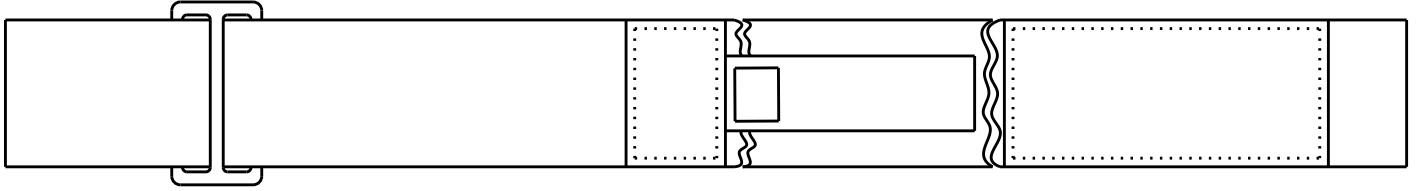
Rev AC (Reference only)



Number	Name
0390-019-001	Restraining strap, long
0390-019-002	Restraining strap, short

Chest restraint strap - 1010-058-000

Rev AC (Reference only)



Number	Name
0390-019-001	Restraining strap, long
0390-019-002	Restraining strap, short

Full restraint strap package - 1010-077-000

Rev C (Reference only)

Number	Name
0390-019-000	Body restraint
0946-043-001	Ankle restraint strap assembly
0946-044-001	Wrist restraint
1010-058-000	Chest restraint

stryker



Stryker Medical
3800 E. Centre Avenue
Portage, MI 49002
USA