

Fluoroscopy Stretcher

Maintenance Manual

REF 1080



Table of Contents

Warning/Caution/Note Definition	3
Summary of safety precautions	3
Introduction for service	4
Expected service life	4
Contact information	4
Serial number location	4
Preventive maintenance	5
Service	6
Caster maintenance	6
Brake cam replacement	6
Brake ring replacement	7
Brake/steer pedal replacement	7
Brake adjustment	8
Jack replacement	9
Siderail latch adjustment	11
Remove excess air from the hydraulic system	11
Pneumatic backrest adjustment	11
Prime the pump	12
Check hydraulic fluid level	12
Base lubrication	12
Troubleshooting	14
“C” base assembly	15
Jack/control assembly	23
Jack base assembly	24
Caster wheel assembly	25
Steer caster wheel assembly	26
5.75 in. molded wheel assembly	27
Brake adjuster assembly	28
Litter assembly	29
Litter assembly, high height option	33
Pneumatic Fowler assembly	35
Outer housing assembly, right - 1210-031-106	36
Outer housing assembly, left - 1210-031-107	37
Siderail assembly to litter	38
Siderail assembly	40
Accessory rail to litter assembly	41
Footboard/chart holder	43
Havasu IV pole, removable - 0390-025-000	44
IV pole assembly, permanent	45
Two-stage IV pole assembly - 1211-210-010	46
IV pole latch assembly	47
Footboard/chart holder - 0785-045-500	48
Upright oxygen bottle holder assembly - 1020-130-000	49
Ankle restraint strap - 0946-043-001	50
Wrist restraint strap - 0946-044-000	51
Body restraint strap - 0390-019-000	52
Chest restraint strap - 1010-058-000	53

Warning/Caution/Note Definition

The words **WARNING**, **CAUTION**, and **NOTE** carry special meanings and should be carefully reviewed.

WARNING

Alerts the reader about a situation which, if not avoided, could result in death or serious injury. It may also describe potential serious adverse reactions and safety hazards.

CAUTION

Alerts the reader of a potentially hazardous situation which, if not avoided, may result in minor or moderate injury to the user or patient or damage to the product or other property. This includes special care necessary for the safe and effective use of the device and the care necessary to avoid damage to a device that may occur as a result of use or misuse.

Note - Provides special information to make maintenance easier or important instructions clearer.

Summary of safety precautions

Always read and strictly follow the warnings and cautions listed on this page. Service only by qualified personnel.

WARNING

- Always use caution when you remove the spring to avoid personal injury. The spring is tightly compressed.
 - Always follow the siderail latch adjustment procedure if you need to adjust the siderail latches. The siderail latches are preset at the factory and do not need adjustment. Incorrect siderail adjustment could result in injury to the patient or operator.
-

Introduction for service

This manual assists you with the service of your Stryker product. Read this manual to service this product. This manual does not address the operation of this product. See the Operations Manual for operating and use instructions. To view your Operations Manual online, see <https://techweb.stryker.com/>.

Expected service life

The Fluoroscopy Stretcher has a 10 year expected service life under normal use conditions and with appropriate periodic maintenance.

Contact information

Contact Stryker Customer Service or Technical Support at: 1-800-327-0770.

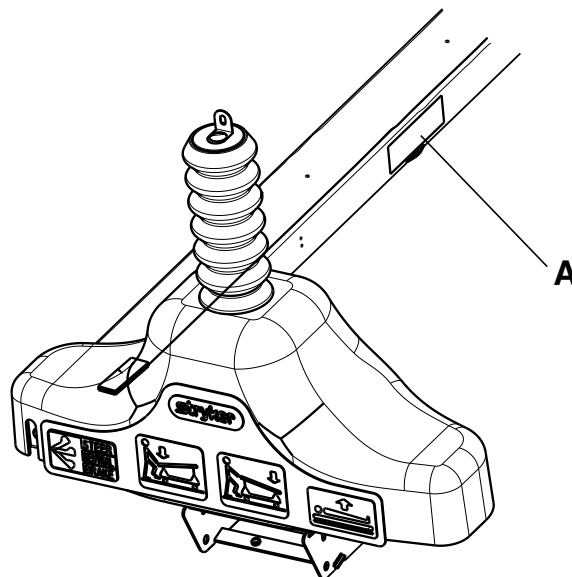
Stryker Medical
3800 E. Centre Avenue
Portage, MI 49002
USA

Note - The user and/or the patient should report any serious product-related incident to both the manufacturer and the Competent authority of the European Member State where the user and/or patient is established.

To view your operations or maintenance manual online, see <https://techweb.stryker.com/>.

Have the serial number (A) of your Stryker product available when calling Stryker Customer Service or Technical Support. Include the serial number in all written communication.

Serial number location



Preventive maintenance

Remove product from service before you perform the preventive maintenance inspection. Check all items listed during annual preventive maintenance for all Stryker Medical products. You may need to perform preventive maintenance checks more often based on your level of product usage. Service only by qualified personnel.

Clean and disinfect the exterior of the mattress before inspection, if applicable.

Inspect the following items:

- All welds
- All fasteners are secure
- Brake mechanism works
- Steer function works
- Siderails raise, lower, and latch
- Casters lock when you apply the brakes
- Casters secure and swivel
- Casters are free of wax or debris
- Fowler backrest raises, lowers, and latches
- Skins are not cracked
- Trendelenburg/Reverse Trendelenburg raises and lowers from all locations
- IV pole option is intact
- Oxygen bottle holder option is intact and is in good working condition
- Body restraints are not torn and can be adjusted and latched
- Accessories and mounting hardware are in good working condition
- No rips, tears, or cracks in the mattress cover
- Velcro®** on the mattress is in good condition
- Velcro®** on litter is in good condition; replace if necessary (0381-024-007)
- Ground chain is intact
- No leaks at hydraulic connections
- Hydraulic jacks holding
- Hydraulic drop rate is set
- Hydraulic oil level is sufficient
- Lubricate where required, including the brake adjuster assembly, brake cam, and pump bar pivot brackets

Product serial number:
Completed by:
Date:

Service

Caster maintenance

Tools required:

- 5/8" combination wrench
- 11/16" combination wrench

Procedure:

1. Apply the brakes. Push on the product to make sure that the brakes work.
2. Using a 5/8" combination wrench and an 11/16" combination wrench, remove the lock nut (A) from the bolt (B) (Figure 1). Save the lock nut.

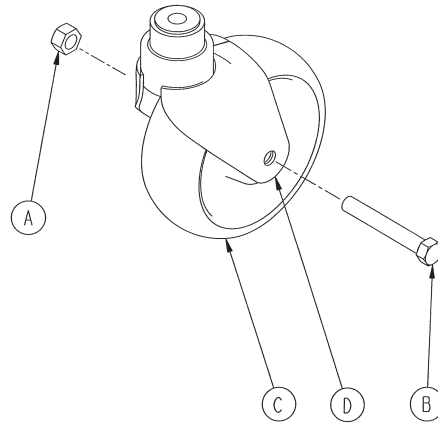


Figure 1 – Caster maintenance

3. Support the corner of the product where the caster is being removed.
4. Remove the bolt (B) and the molded wheel (C). Save the bolt and the molded wheel.
5. Clean the bolt, molded wheel, and the inside of the caster horn (D) to remove any dirt or debris.
6. Make sure that the bearings in the molded wheel spin with ease.
7. Reverse steps to reinstall.
8. Verify proper operation before you return the product to service.

Brake cam replacement

Tools required:

- 1/8" hex wrench
- 3/32" hex wrench
- Bungee cords

Procedure:

1. Raise the base hood and support the base hood with bungee cords.
2. Using a 3/32" hex wrench, loosen the set screw that secures the brake adjuster to the brake ring. Turn the adjuster clockwise to remove.
3. Using a 1/8" hex wrench, remove the shoulder bolt and nut that secures the brake link on the cam. Remove and discard the cam.
4. Reverse steps to install the supplied cam.

5. Verify proper operation before you return the product to service.

Brake ring replacement

Tools required:

- Bungee cords
- Small floor jack
- 3/32" hex wrench
- 3/4" socket
- 3/4" ratchet
- 3/4" wrench
- Needle nose pliers

Procedure:

1. Put the brake/steer pedal in the neutral position.
2. Raise the product to the highest height position.
3. Raise the base hood and support the base hood with bungee cords.
4. Using a small floor jack, lift the end of the product until the casters are approximately 12" off the floor.
5. Using a 3/32" hex wrench, loosen the set screw that secures the brake adjuster to the brake ring.
6. Turn the brake adjuster clockwise to remove.
7. Remove the two casters on the end of the product being serviced.
8. Using a 3/4" socket and a 3/4" ratchet on the inside of the caster horn and a 3/4" wrench on the caster nut, remove the bolt (B) and caster horn (D) (Figure 1).
9. Using needle nose pliers, squeeze the spring between the brake cam and the brake ring to remove the spring.

WARNING - Always use caution when you remove the spring to avoid personal injury. The spring is tightly compressed.

10. Remove the spring from the pump pedal.
11. Lower and remove the brake ring from the base.
12. Remove the brake pads and bushings.
13. Install the brake pads and bushings on the supplied brake ring.
14. Reverse steps to install the supplied brake ring.
15. Apply and release the brakes to make sure that the brakes work.
16. Adjust the brakes, if needed. See *Brake adjustment* (page 8).

Note - Make sure that the set screw hole in the brake ring collar is facing toward the inside of the base when you install the brake ring.

17. Verify proper operation before you return the product to service.

Brake/steer pedal replacement

Tools required:

- 3/8" box end wrench
- (2) 7/16" wrenches
- 3/16" drive pin
- Hammer

- Bungee cords
- **Loctite®** 409 or equivalent

Procedure:

Note - Two people are required to safely perform this procedure.

1. Raise the base hood and support the base hood with bungee cords.
2. Apply the brake.

Note - If you cannot apply the brake, with assistance from another person, use a large wrench or pry tool to push down on the brake bar (compressing the spring). Manually move the molded plastic brake cam to the brake position at both ends of the base.

3. Raise the product to the highest height position.
4. Raise the backrest.
5. Raise the siderails to the highest height position.
6. Using a 3/8" box end wrench, remove the bolt from the litter support tube above the black bellows on both ends.
7. With assistance from another person, lift the litter off of the litter support tube and set the litter aside.
8. Using two 7/16" wrenches, remove the bolt, nut, and washers that secure the square brake drive link assembly to the brake actuator on both sides of the base.
9. While you lift one end (head end or foot end) of the base, rotate the brake/steer pedal until the bottom of the pedal is facing up.
10. Working from the bottom of the brake/steer pedal, use a hammer and a 3/16" drive pin to remove the groove pin from the brake/steer pedal. Discard the groove pin.
11. Remove the brake/steer pedal from the brake rod.

Note - You may need to use a hammer to remove the brake/steer pedal.

12. Rotate the brake rod until the actuators are upright.
13. Install the supplied brake/steer pedal on the brake rod. Align the holes in the brake/steer pedal with the holes in the brake rod.
14. Apply **Loctite®** 409 or equivalent to the supplied groove pin.
15. From the top of the brake/steer pedal, use a hammer to install the supplied groove pin. Use the drive pin, if necessary, to make sure that the groove pin is flush with the top of the brake/steer pedal.
16. Reverse step 8 to reinstall the brake drive link assemblies.
17. Apply and release the brake to make sure that the brakes work.
18. Lower the base hood.
19. Reverse steps 6 and 7 to replace the litter.
20. Verify proper operation before you return the product to service.

Brake adjustment

Tools required:

- 3/32" hex wrench
- Pry bar

Procedure:

Note - Always align the flat side on the thread of the stud with the set screw. Only turn the set screw one full turn.

1. Using a pry bar (A), compress the spring to relieve tension on the stud (Figure 2).
2. Using a 3/32" hex wrench, turn the set screw (B) one full turn counterclockwise to tighten the brake.

3. Using a 3/32" hex wrench, turn the set screw (B) one full turn clockwise to loosen the brake.
4. Verify proper operation before you return the product to service.

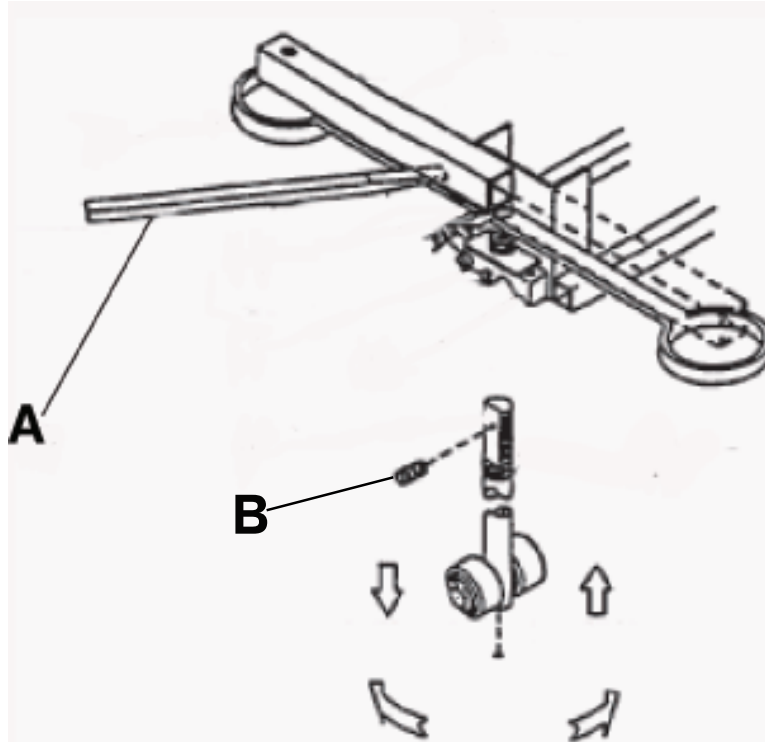


Figure 2 – Brake adjustment

Jack replacement

Tools required:

- 3/8" box end wrench
- (2) 1/2" wrench
- 3/16" hex wrench
- Spring compression tool
- 7/16" wrench
- 7/16" socket
- 6" extension with ratchet
- 5/32" hex wrench

Procedure:

Note - Two people are required to safely perform this procedure.

1. Apply the brake. Push on the product to make sure that the brakes work.
2. Raise the product to the highest height position.
3. Raise the backrest.
4. Using a 3/8" box end wrench, remove the square head set screws from both the head end and the foot end jack support tubes.
5. With assistance from another person, lift the litter top off of the jack support tubes and set it aside.
6. Remove the base hood.

- Using a 1/2" wrench, remove the screw (A), external tooth lock washers (B), and Nylock nuts (C) that secure the pump link roller bar assembly (D), (E), and (F) to the base (Figure 3).

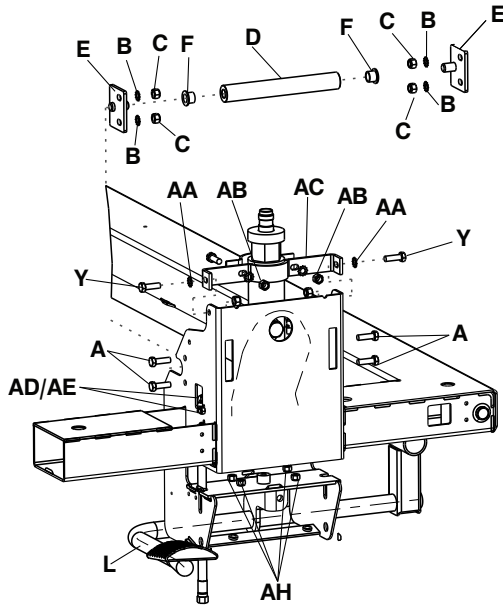


Figure 3 – Jack replacement

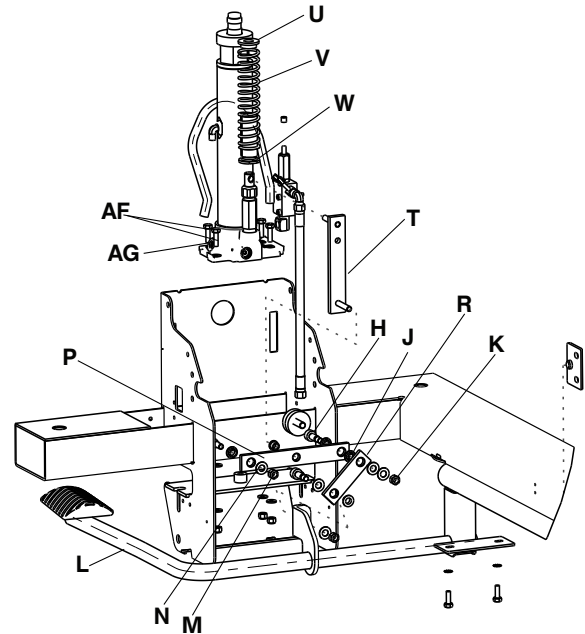


Figure 4 – Assembly jack on base

- Using a 1/2" wrench and a 3/16" hex wrench, remove the shoulder screws (H), washers (J), and Nylock nuts (K) that secure the link (R) to the pump bar weldment (L) (Figure 4).
- Using a spring compression tool, compress the spring (V).
- Using a 1/2" wrench, remove the Nylock nut (M) and the washer (N) from the base stud to remove the horizontal pump link (P) and the swing pump link (R).
- With the spring compression tool still in place, remove the pump link weldment (T).
- Remove the spring compression tool.

Note - Use extreme caution when you remove the spring compression tool. The spring and top spring guide are still under pressure and could cause personal injury if they are allowed to break free.

- Remove the spring guide (U), spring (V), spring holder guide (W), and the jack washer from the jack pump.
- Using two 1/2" wrenches, remove the screws (Y), lock washers (AA), and Nylock nuts (AB) that secure the jack support bracket (AC) to the frame. When reinstalling, do not overtighten the screws to avoid damage to the jack reservoir tube.

Note - When you reinstall, do not overtighten the screws to avoid damage to the jack reservoir tube.

- Using a 3/8" box end wrench and a 5/32" hex wrench, remove the screws (AD) and the Nylock nuts (AE) that secure the jack manifold to the base.
- Using a 7/16" wrench, 7/16" socket, and a 6" extension with ratchet, remove the screws (AF), washers (AG), and Nylock nuts (AH) that secure the jack assembly to the base.
- Reverse steps to reinstall.
- Verify proper operation before you return the product to service.

Siderail latch adjustment

WARNING - Always follow the siderail latch adjustment procedure if you need to adjust the siderail latches. The siderail latches are preset at the factory and do not need adjustment. Incorrect siderail adjustment could result in injury to the patient or operator.

Tools required:

- 1/8" hex wrench

Procedure:

1. Using a 1/8" hex wrench, adjust the hex screw located on the latch assembly opposite the latch.
2. Turn the screw:
 - a. Clockwise to tighten the latching mechanism.
 - b. Counterclockwise to loosen the latching mechanism.

Note - The amount siderail movement, when the siderail is latched in the highest height position, should be approximately 1/8" to 3/16".

- Too much siderail movement, when the siderail is latched in the highest height position, will give the siderail the appearance of being unstable. This may result in premature wearing of the latch system.
 - Not enough siderail movement, when the siderail is latched in the highest height position, will obstruct the latch and the latch will not lock in place. This may result in damage to the latch or injury to the patient or operator.
3. Verify proper operation before you return the product to service.

Remove excess air from the hydraulic system

Tools required:

- None

Procedure:

1. Raise the product to the highest height position.
2. Push down on the pump pedal several times to force the air through the system.
3. Verify proper operation before you return the product to service.

Pneumatic backrest adjustment

Tools required:

- 1/2" combination wrench
- 5/32" hex wrench

Procedure:

1. Raise the backrest to 75 degrees or higher.
2. Using a 1/2" combination wrench, loosen the hex nuts in the actuator arms on the end of the trip bar.
3. To adjust the backrest, use a 5/32" hex wrench to turn the hex screws:
 - a. Counterclockwise (1 to 2 turns) if the backrest will not move.
 - b. Clockwise (1 to 2 turns) if the backrest will not hold its position.
4. Using a 1/2" combination wrench, tighten the hex nuts. Raise the backrest from flat to 90 degrees, then lower the backrest until flat again.

Note - Apply weight to the backrest when raised to make sure that it holds the position with weight applied.

5. Verify proper operation before you return the product to service.

Prime the pump

Tools required:

- None

Procedure:

1. Remove the pump link and the spring. See *Jack replacement* (page 9).
2. Push on the pump with your hand and make sure that the pump piston bottoms to remove air.
3. Reassemble the pump link and spring.
4. Make sure that there are no leaks.
5. Verify proper operation before you return the product to service.

Check hydraulic fluid level

Tools required:

- **Mobil Aero™** HFA hydraulic fluid (2020-070-475)

Procedure:

1. Lower the product to the lowest height position.
2. Remove the fill plug on the side of the jack.
3. Add **Mobil Aero™** HFA hydraulic fluid until the fluid is visible at the bottom of the fill hole, if necessary.

Note - Do not use other types of oil. Damage to the hydraulic units may occur.

4. Replace the fill plug.

Base lubrication

Tools required:

- MPG-2 grease (or equivalent)

Procedure:

1. Using MPG-2 grease, lubricate the brake adjuster rod around the areas noted at (A) (Figure 5)

Note - Do not grease these areas (B) (Figure 5).

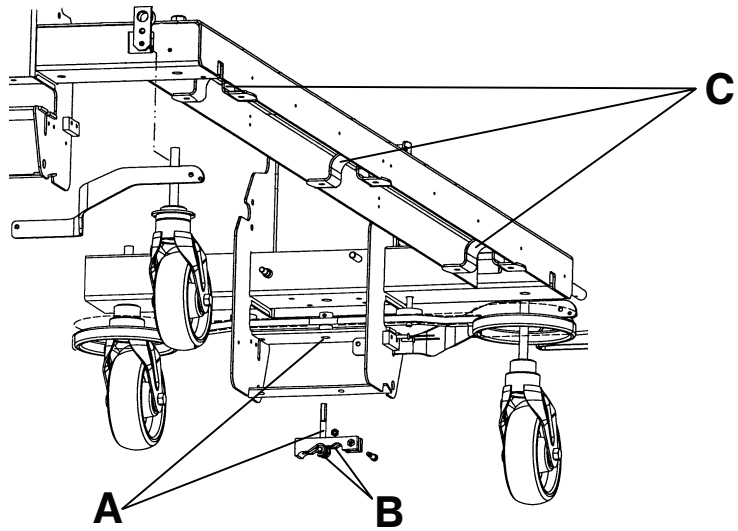


Figure 5 – Base lubrication

2. Remove retaining plates (C).
3. Raise the pump bar weldment.
4. Grease the pump bar pivot brackets.
5. Grease the retaining plates where they come in contact with the pump bar before you reinstall the retaining plates.

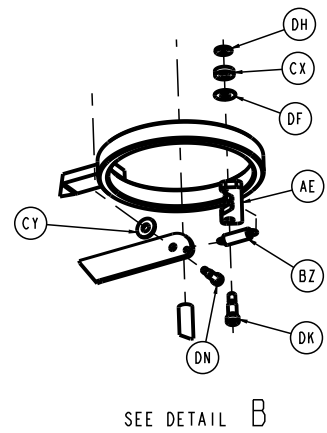
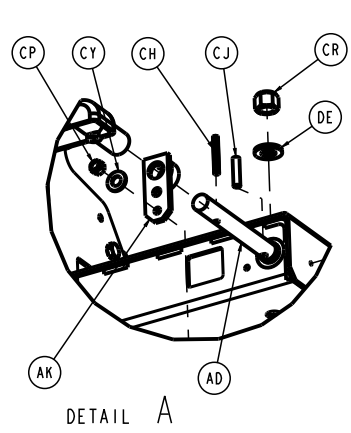
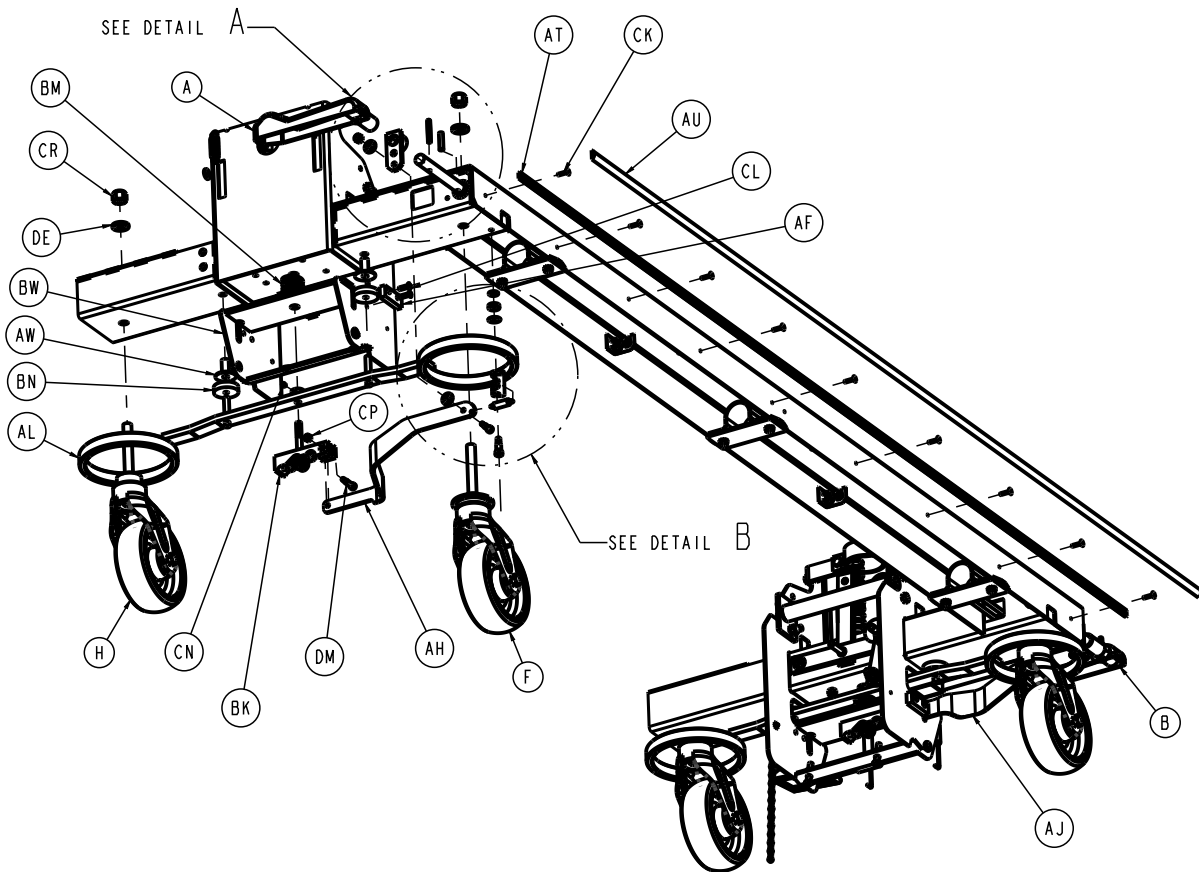
Troubleshooting

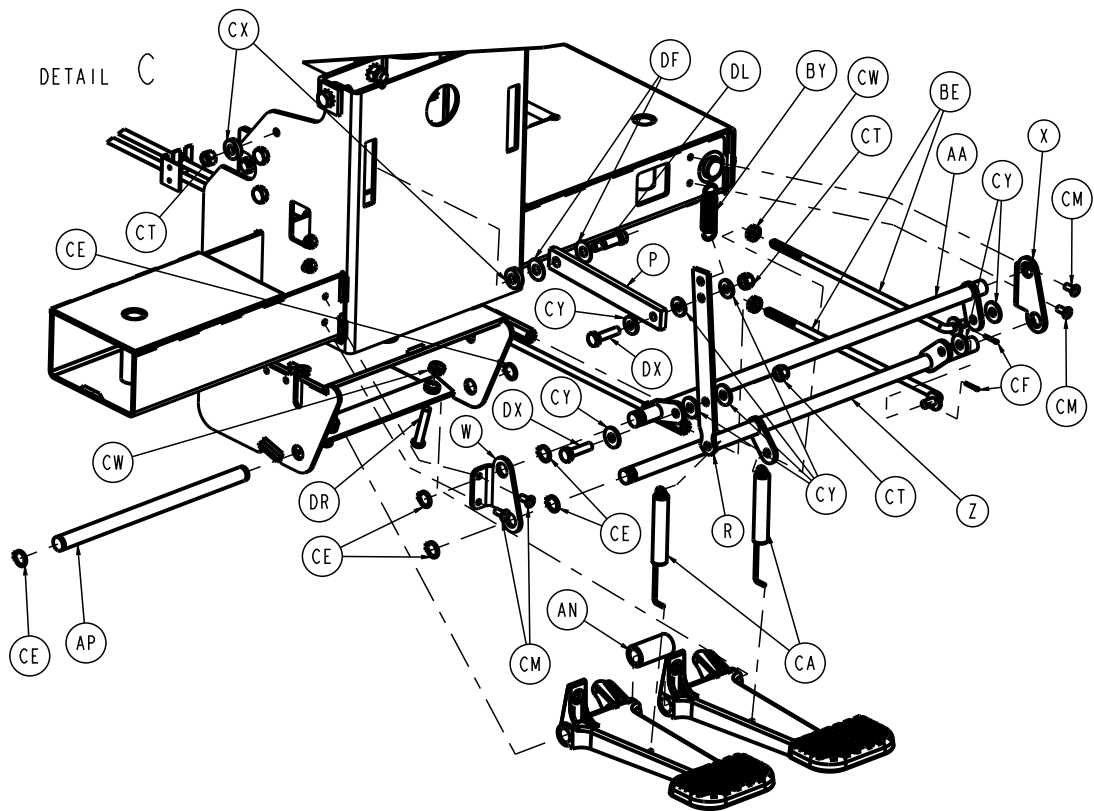
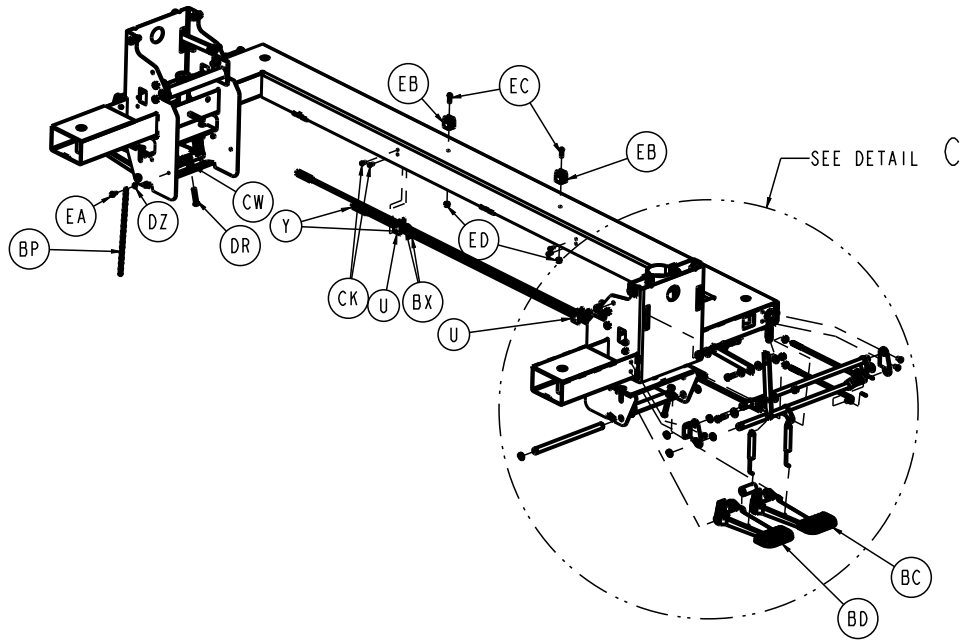
Check for proper operation after each step. When you correct the problem, return the product to service. If you need assistance at any time during troubleshooting, please contact a Stryker service technician at 1-800-327-0770.

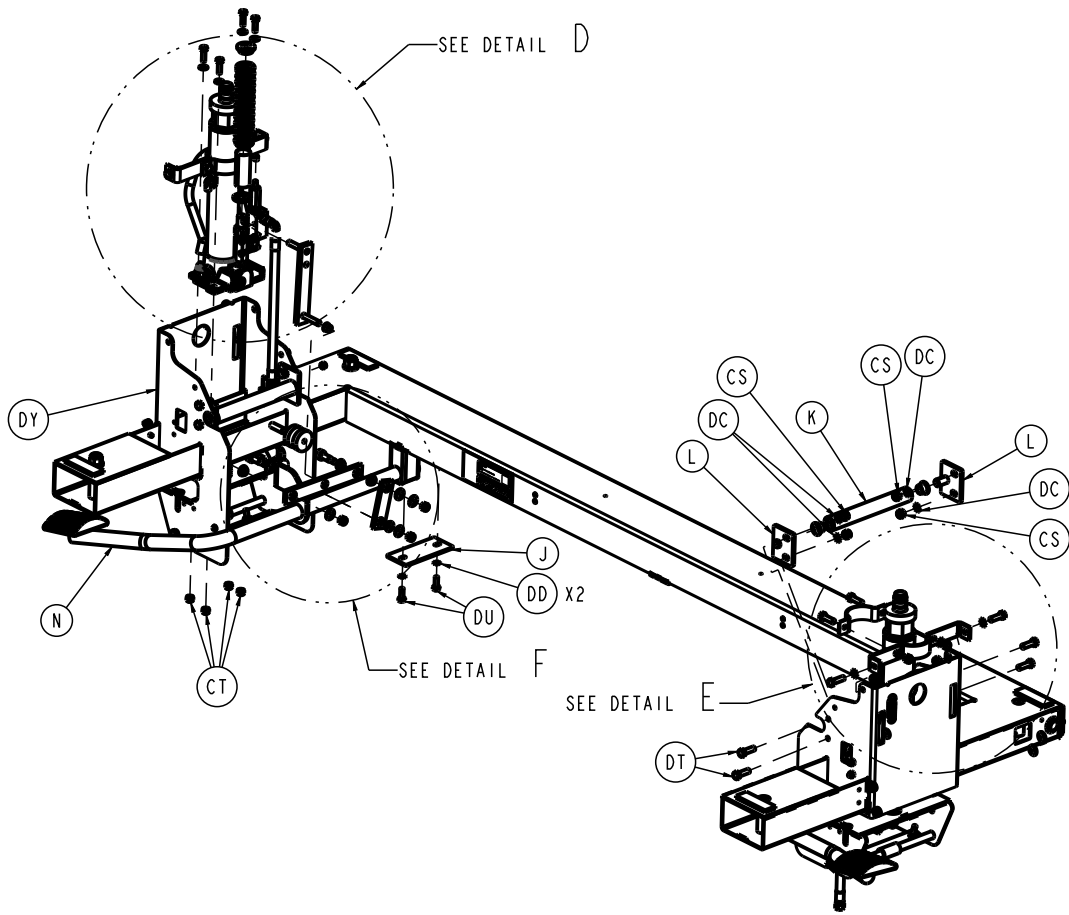
Problem/failure	Possible cause	Recommended action
Jack will not raise to full height	Reservoir low on hydraulic fluid	Add hydraulic fluid (<i>Check hydraulic fluid level</i> (page 12))
One end of the product rises much slower than the other end	<ul style="list-style-type: none"> Air in pump piston Reservoir is low on hydraulic fluid 	<ul style="list-style-type: none"> Prime the pump (<i>Prime the pump</i> (page 12)) Add hydraulic fluid (<i>Check hydraulic fluid level</i> (page 12))
Jack will not pump up	<ul style="list-style-type: none"> Lever assembly is in contact with valve stem on manifold assembly Air in pump piston Defective jack 	<ul style="list-style-type: none"> Adjust length of the control rod so that there is a slight gap between the lever and the valve stem Prime the pump (<i>Prime the pump</i> (page 12)) Replace the jack (<i>Jack replacement</i> (page 9))
Jack will not hold in raised position	<ul style="list-style-type: none"> Lever assembly is in contact with valve stem on manifold assembly Defective valve Defective jack Internal leakage of oil past a valve or seal 	<ul style="list-style-type: none"> Adjust length of the control rod so that there is a slight gap between the lever and the valve stem Fully evaluate the jack. Close the needle valve by turning the valve clockwise. If jack no longer sinks, the needle valve is defective. Replace the needle valve (0962-001-152) Fully evaluate the jack. Close the needle valve by turning the valve clockwise. If the jack continues to sink, the jack is defective. Replace the jack. Make sure that all valves are fully closed by depressing and releasing the appropriate pedal. Make sure that there is a slight gap between the lever assembly and the valve stem. Close the needle valve completely. If the jack holds, the leakage is in the release valve. Replace the release valve.
Jack will not lower	Valve support is loose and out of position	Reposition the valve support and tighten the screws

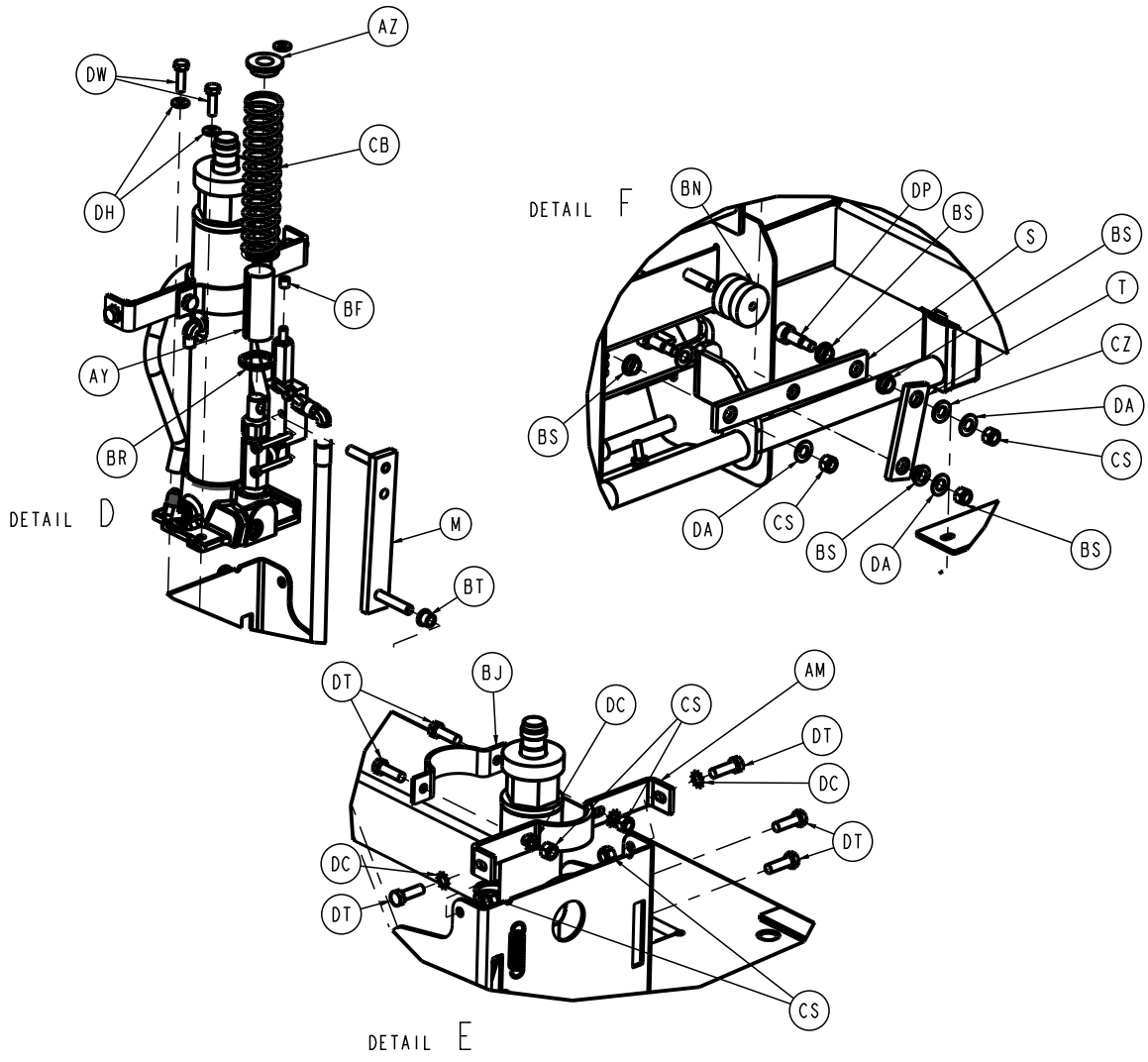
"C" base assembly

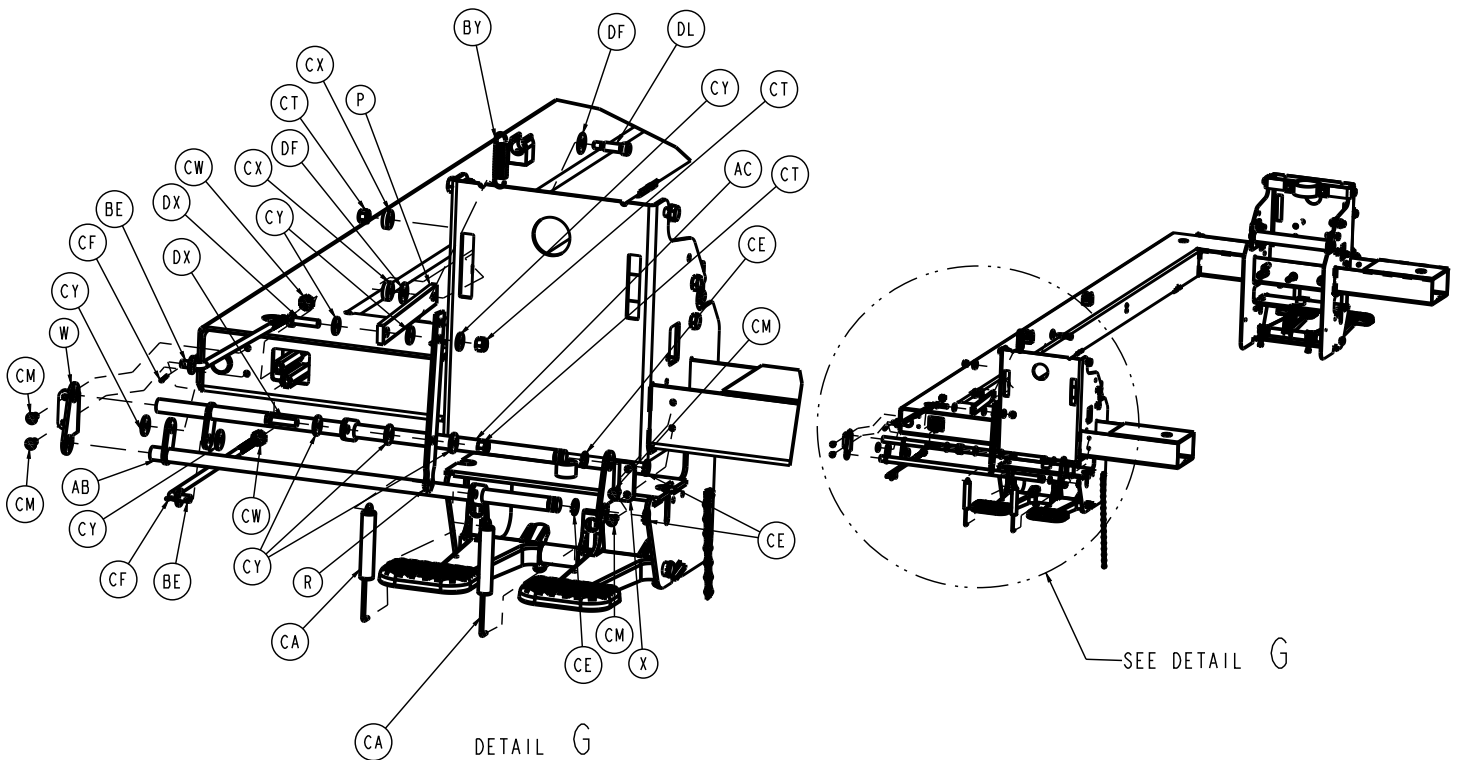
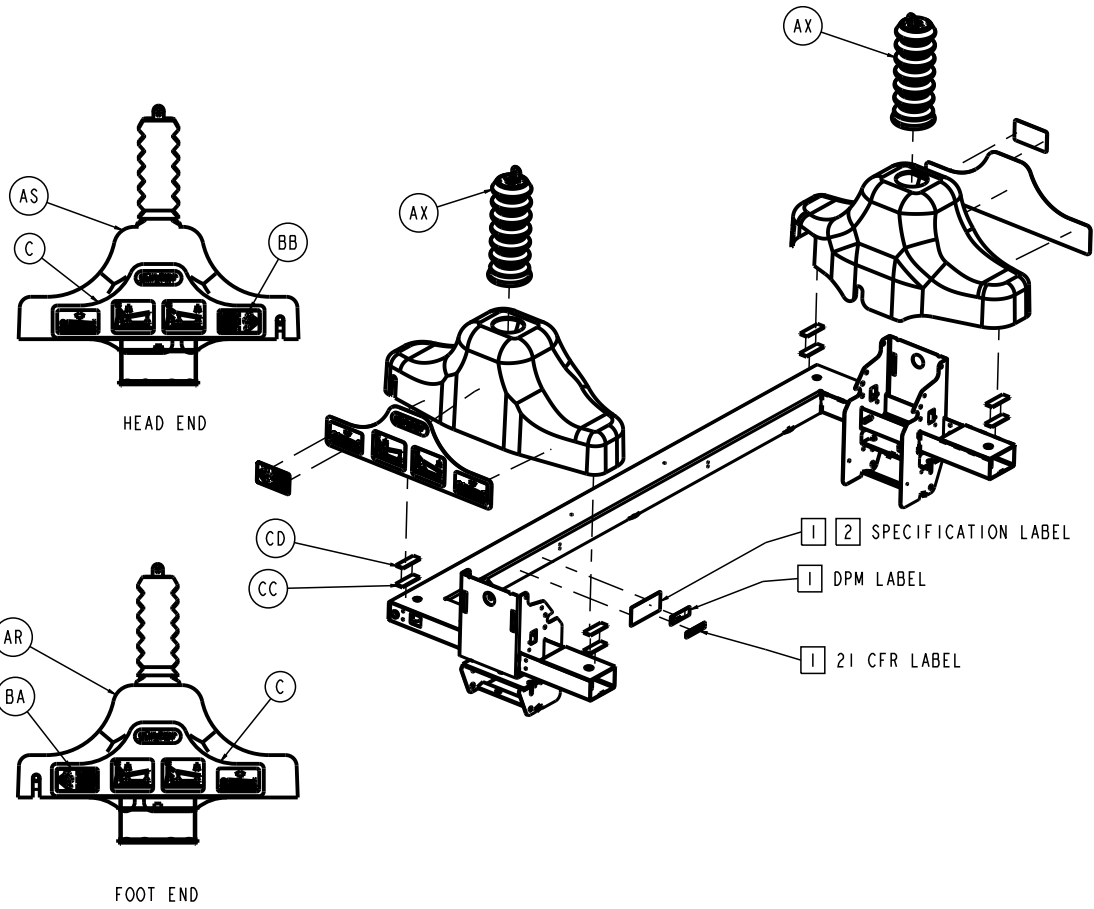
1080-001-010 Rev U (Reference only)











Item	Name	Number	Quantity
A	1210-001-346	Brake/steer pedal, head end	1
B	1210-001-345	Brake/steer pedal, foot end	1
C	1080-090-001	Pedal control label	2

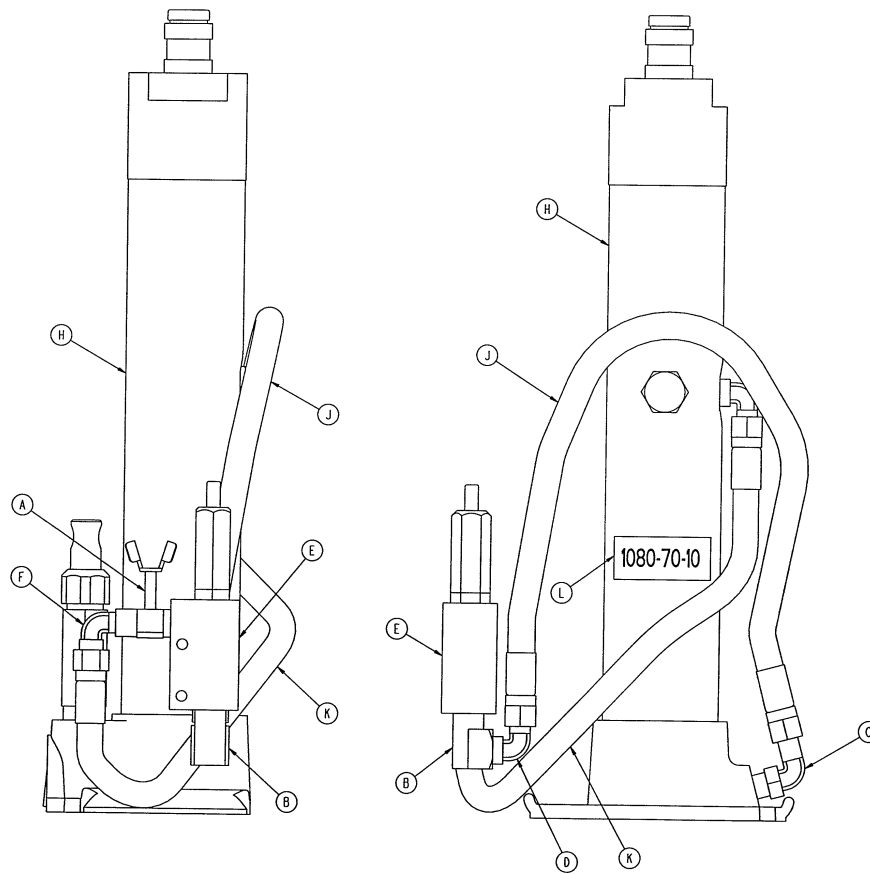
Item	Name	Number	Quantity
D	1080-070-010	Hydraulic jack assembly	2
E			
F	1080-005-011	Steer caster wheel assembly (page 26)	1
H	1080-005-010	Caster wheel assembly (page 25)	3
J	1080-004-094	Pump bar retaining plate	3
K	1080-004-088	Pump link roller bar	2
L	1080-004-055	Mounting plate weldment, roller bar pivot	4
M	1080-004-054	Pump link weldment	2
N	1080-004-050	Pump pivot bar weldment	1
P	1080-003-094	Release lever, hydraulic valve	2
R	1080-003-093	Release link	2
S	1080-003-082	Horizontal release link	2
T	1080-003-081	Release swing link	2
U	1080-003-080	Release rod support bracket	2
W	1080-003-078	Pivot bracket, release weldment, right	2
X	1080-003-077	Pivot bracket, release weldment, left	2
Y	1080-003-057	Transfer rod weldment	2
Z	1080-003-053	Lower release weldment, foot end	1
AA	1080-003-052	Upper release weldment, foot end	1
AB	1080-003-051	Lower release weldment, head end	1
AC	1080-003-050	Upper release weldment, head end	1
AD	1080-002-098	Brake rod	1
AE	1080-002-094	Steer-LOCK plate	1
AF	1080-002-093	Pull bar guide bushing	2
AH	1080-002-092	Brake/steer pull bar, foot end	1
AJ	1080-002-091	Brake/steer pull bar, head end	1
AK	0715-001-165	Actuator plate weldment	2
AL	1080-002-050	Brake ring weldment	2
AM	1080-001-089	Jack support bracket	2
AN	1080-001-088	Release pedal spacer	2
AP	1080-001-087	Release rod pivot rod	2
AR	1080-001-085	Hood, foot end	1
AS	1080-001-084	Hood, head end	1
AT	1080-001-078	Bumper channel	1
AU	1010-700-075	Bumper strip	1
AW	0946-001-116	Brake bushing	4
AX	0926-001-048	Bellows	2
AY	0763-001-016	Bottom spring guide	2
AZ	0715-001-133	Collar	2
BA	0721-031-045	Brake/steer label, foot end	1
BB	0721-031-044	Brake/steer label, head end	1
BC	0716-001-294	Release pedal, right	2
BD	0716-001-293	Release pedal, left	2
BE	0716-001-075	Release rod	4
BF	0715-001-333	Release valve stop sleeve	2

Item	Name	Number	Quantity
BH	0715-301-221	Brake cam	2
BJ	0715-001-193	Jack clamp	2
BK	0715-201-150	Brake adjuster assembly	2
BL	0715-001-126	Pump pedal pad	2
BM	0715-001-094	Brake bar compression spring	2
BN	0715-001-011	Brake cushion	8
BP	3001-200-052	Ground chain	1
BR	0390-001-067	Jack washer	2
BS	0081-240-000	Flange bearing	8
BT	0081-222-000	Flange bearing	2
BU	0081-213-000	Flange bearing	4
BW	0058-056-000	Edge cover	.75'
BX	0052-245-000	Nyliner bushing	4
BY	0038-356-000	Extension spring	2
BZ	0038-355-000	Extension spring	1
CA	0038-353-000	Spring	4
CB	0038-246-000	Jack compression spring	2
CC	0029-009-000	Dual lock	8
CD	0029-007-000	Dual lock	8
CE	0028-097-000	Retaining ring	12
CF	0027-004-000	Cotter pin	4
CH	0026-261-000	Groove pin	2
CJ	0026-013-000	Roll pin	2
CK	0025-103-000	Pop rivet	14
CL	0025-086-000	Rivet	4
CM	0025-079-000	Rivet	8
CN	0021-050-000	Set screw	2
CP	0016-059-000	Flexlock nut	4
CR	0016-057-000	Nylock nut	4
CS	0016-036-000	Nylock nut	20
CT	0016-028-000	Nylock nut	14
CU	0016-003-000	Nylock nut	4
CW	0015-011-000	Jam nut	8
CX	0014-070-000	Nylon washer	4
CY	0014-046-000	Nylon washer	20
CZ	0014-021-000	Nylon washer	2
DA	0014-020-000	Nylon washer	8
DB	0014-007-000	Nylon washer	2
DC	0013-038-000	External tooth lock washer	16
DD	0013-010-000	External tooth lock washer	6
DE	0011-310-000	Washer	4
DF	0011-179-000	Washer	7
DH	0011-063-000	Washer	9
DK	0008-049-000	Socket head shoulder bolt	1
DL	0008-027-000	Socket head shoulder bolt	2

Item	Name	Number	Quantity
DM	0008-021-000	Socket head shoulder bolt	2
DN	0008-017-000	Socket head shoulder bolt	2
DP	0008-004-000	Socket head shoulder bolt	4
DR	0004-135-000	Button head cap screw	4
DS	0004-085-000	Socket head cap screw	4
DT	0003-085-000	Hex head cap screw	16
DU	0003-050-000	Hex head cap screw	6
DW	0003-015-000	Hex head cap screw	8
DX	0003-003-000	Hex head cap screw	4
DY	1080-001-050	"C" base frame weldment	1
DZ	0013-018-000	External tooth washer	1
EA	0003-364-000	Hex washer head tapping screw	1
EB	0946-001-108	IV clip	2
EC	0004-057-000	Hex socket button head cap screw	2
ED	0016-014-000	Fiberlock hex nut	2

Jack/control assembly

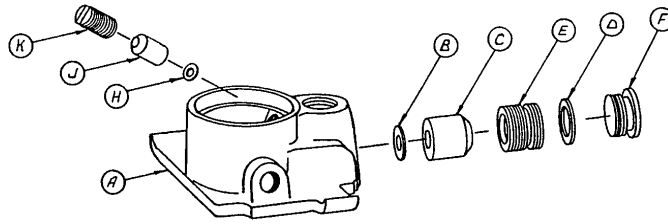
1080-070-010 Rev - (Reference only)



Item	Name	Number	Quantity
A	0048-013-000	Needle valve	1
B	0048-127-000	90 degree street elbow	1
C	0048-146-000	90 degree elbow	1
D	0390-002-147	L-fitting	1
E	0962-001-059	Manifold assembly	1
F	0988-070-456	90 degree elbow	1
H	1080-070-050	Jack assembly	1
J	1080-070-098	Pressure line	1
K	1080-070-099	Return line	1
L	1080-090-002	Label	1

Jack base assembly

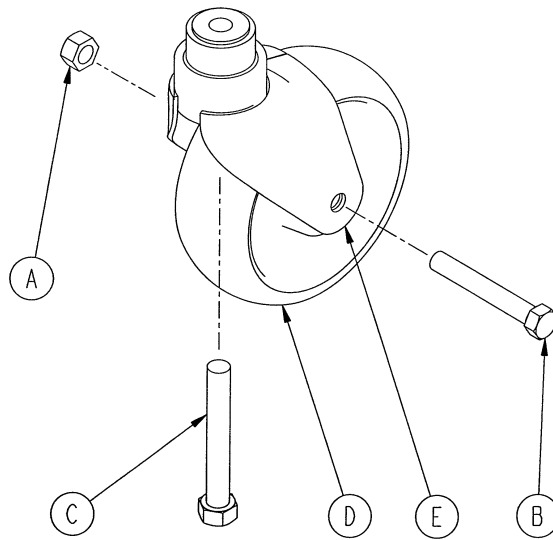
0926-001-295 Rev A (Reference only)



Item	Name	Number	Quantity
A	0946-001-291	Jack base	1
B	0926-020-154	Seal	1
C	0926-020-153	Check valve	1
D	0926-020-156	Seal	1
E	0926-020-159	Valve plug	1
F	0926-020-157	Base plug	1
H	0926-020-155	Seal	1
J	0926-020-152	Check valve	1
K	0926-020-158	Reservoir plug	1

Caster wheel assembly

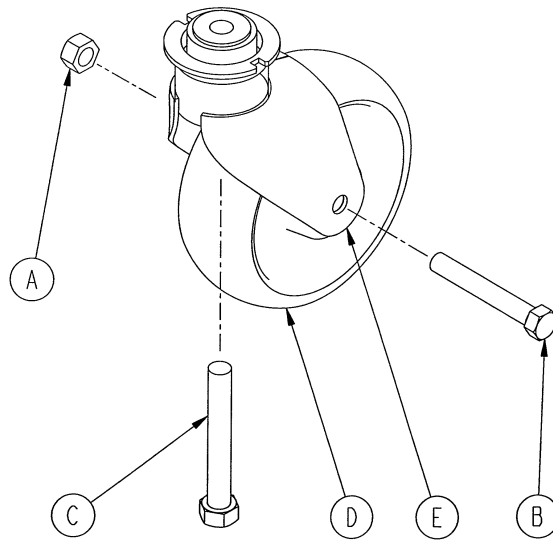
1080-005-010 Rev - (Reference only)



Item	Name	Number	Quantity
A	0016-060-000	Hex nut	1
B	0003-205-000	Hex cap screw	1
C	0003-215-000	Hex cap screw	1
D	5050-002-010	Molded wheel assembly	1
E	5050-002-030	Caster horn assembly	1

Steer caster wheel assembly

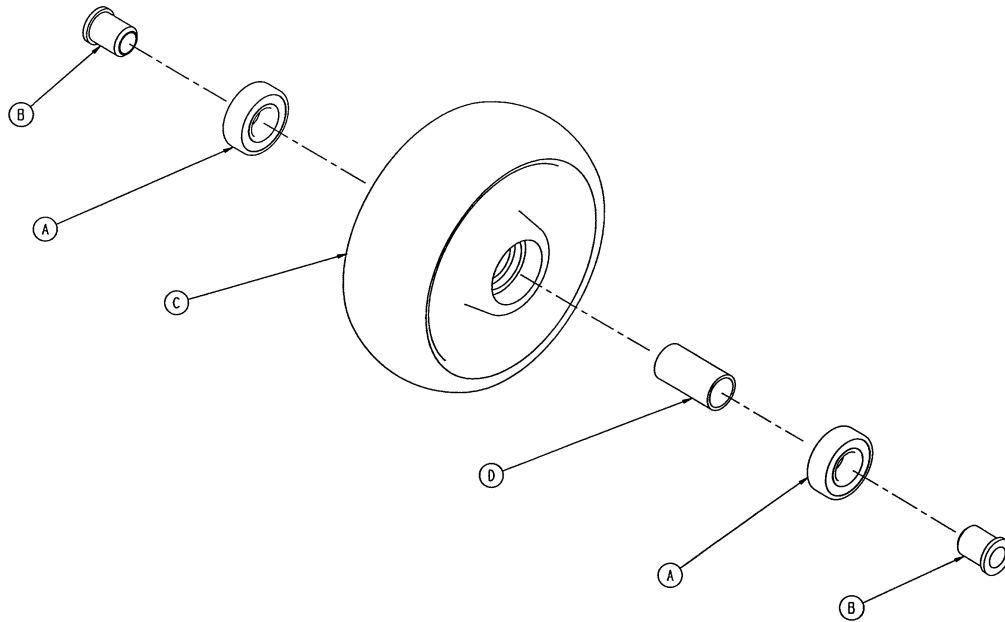
1080-005-011 Rev - (Reference only)



Item	Name	Number	Quantity
A	0016-060-000	Hex nut	1
B	0003-205-000	Hex cap screw	1
C	0003-215-000	Hex cap screw	1
D	5050-002-01	Molded wheel assembly	1
E	5050-002-031	Caster horn assembly	1

5.75 in. molded wheel assembly

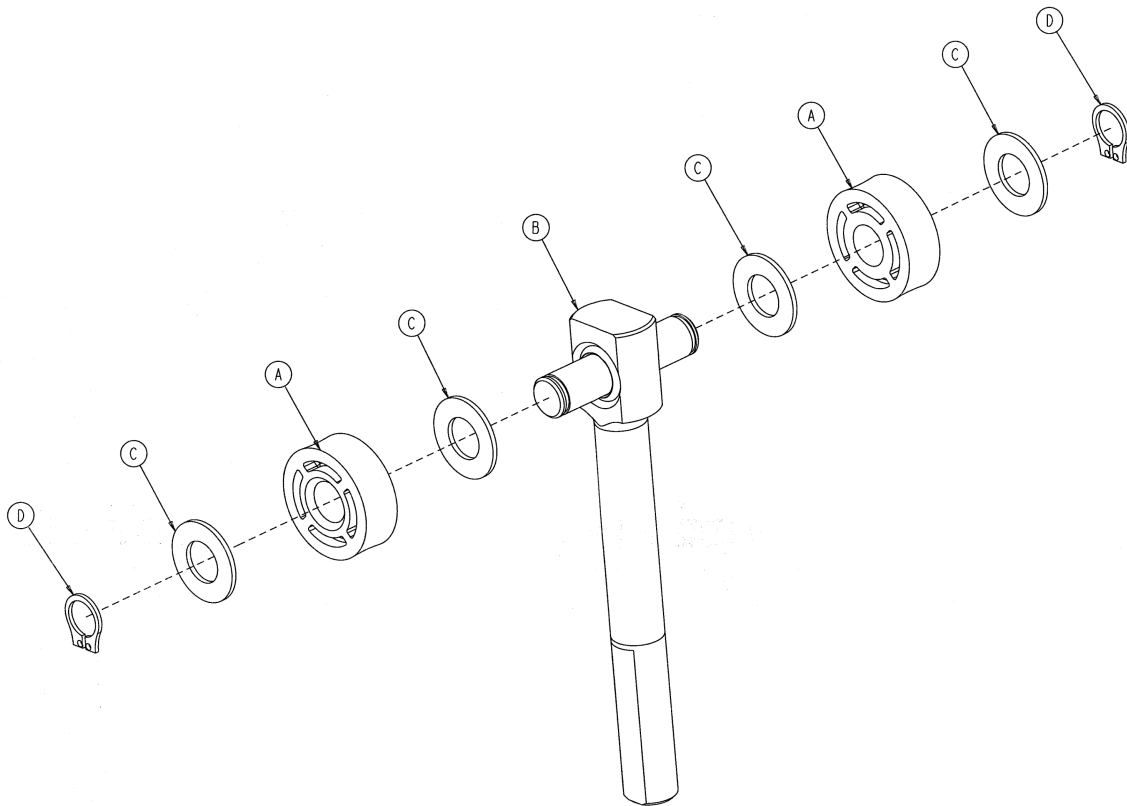
5050-002-010 Rev AA (Reference only)



Item	Name	Number	Quantity
A	0081-226-000	Bearing	2
B	0715-001-255	Wheel bushing	2
C	5050-002-020	5.75 in. molded wheel	1
D	6060-002-041	Bearing spacer	1

Brake adjuster assembly

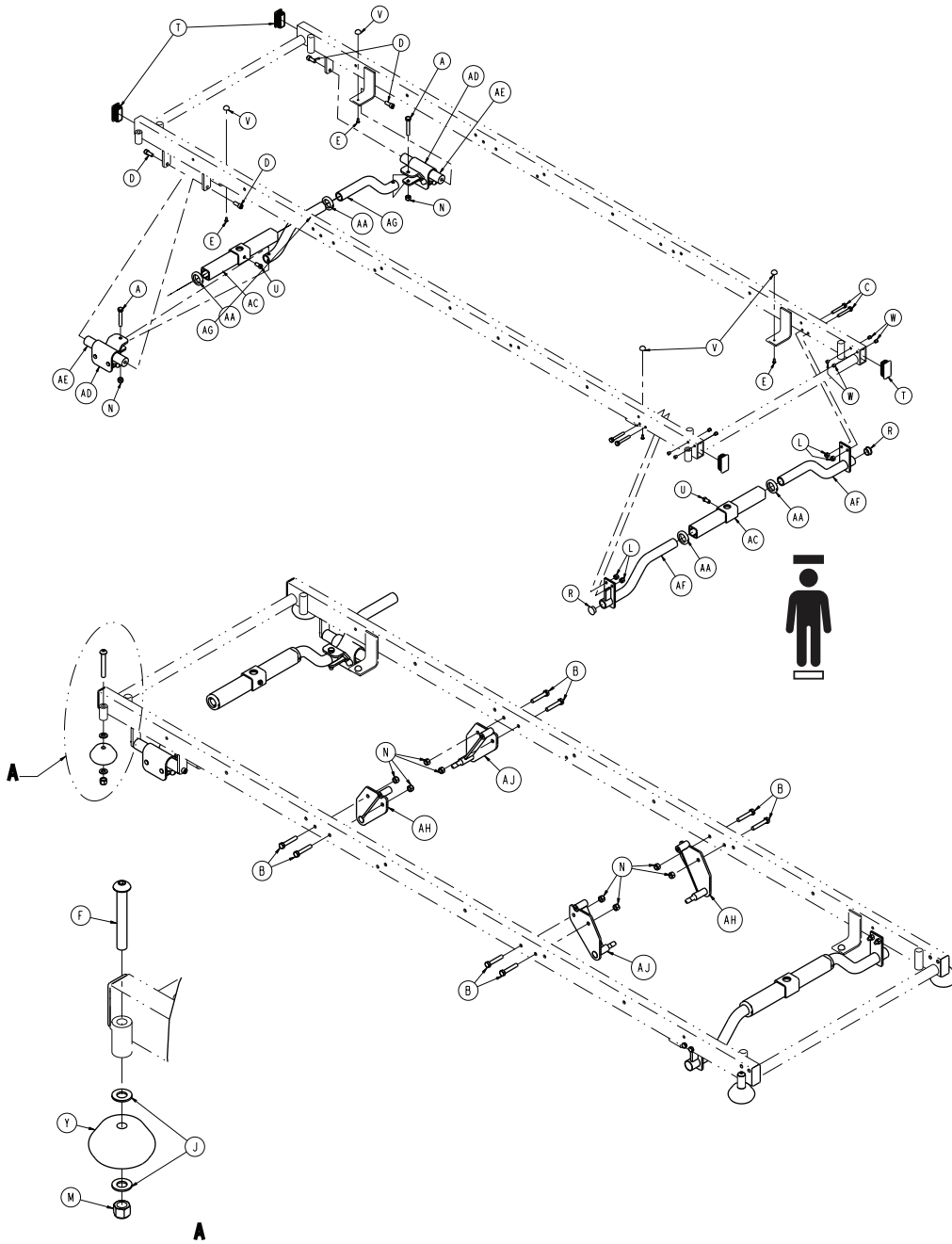
0715-201-150 Rev D (Reference only)

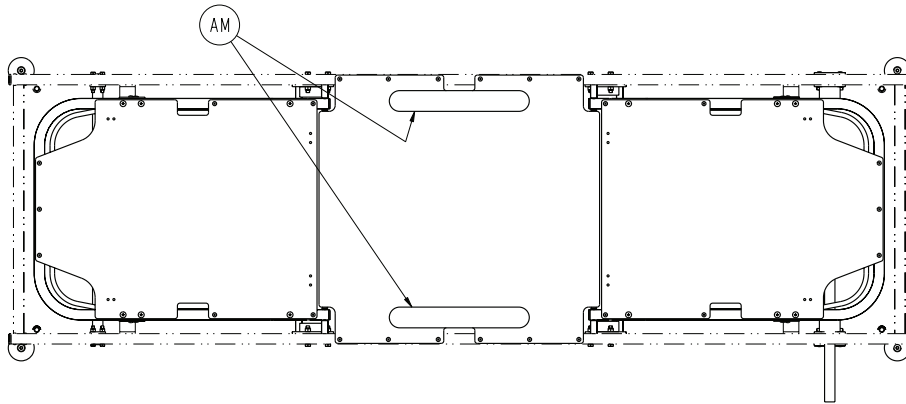
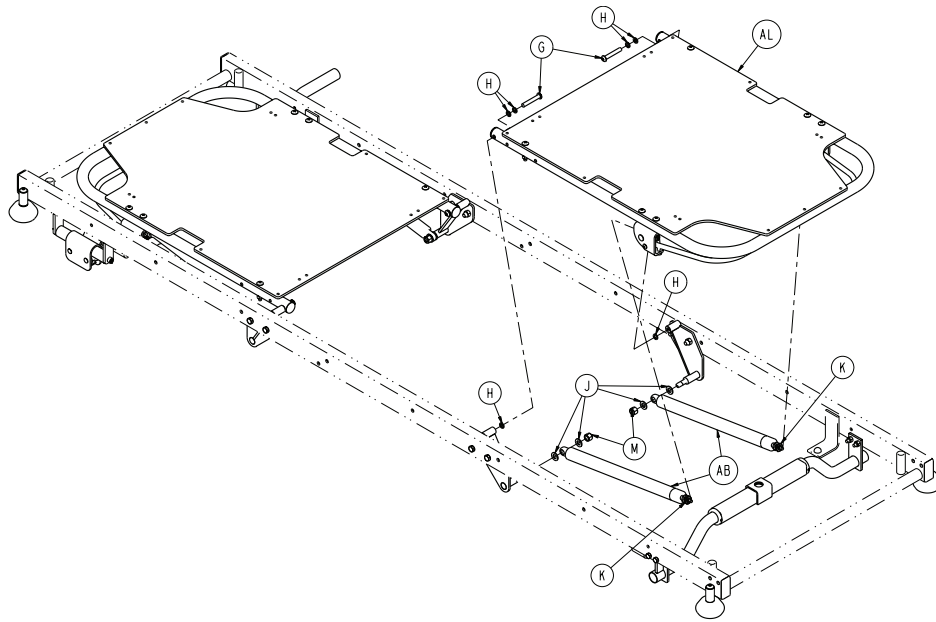


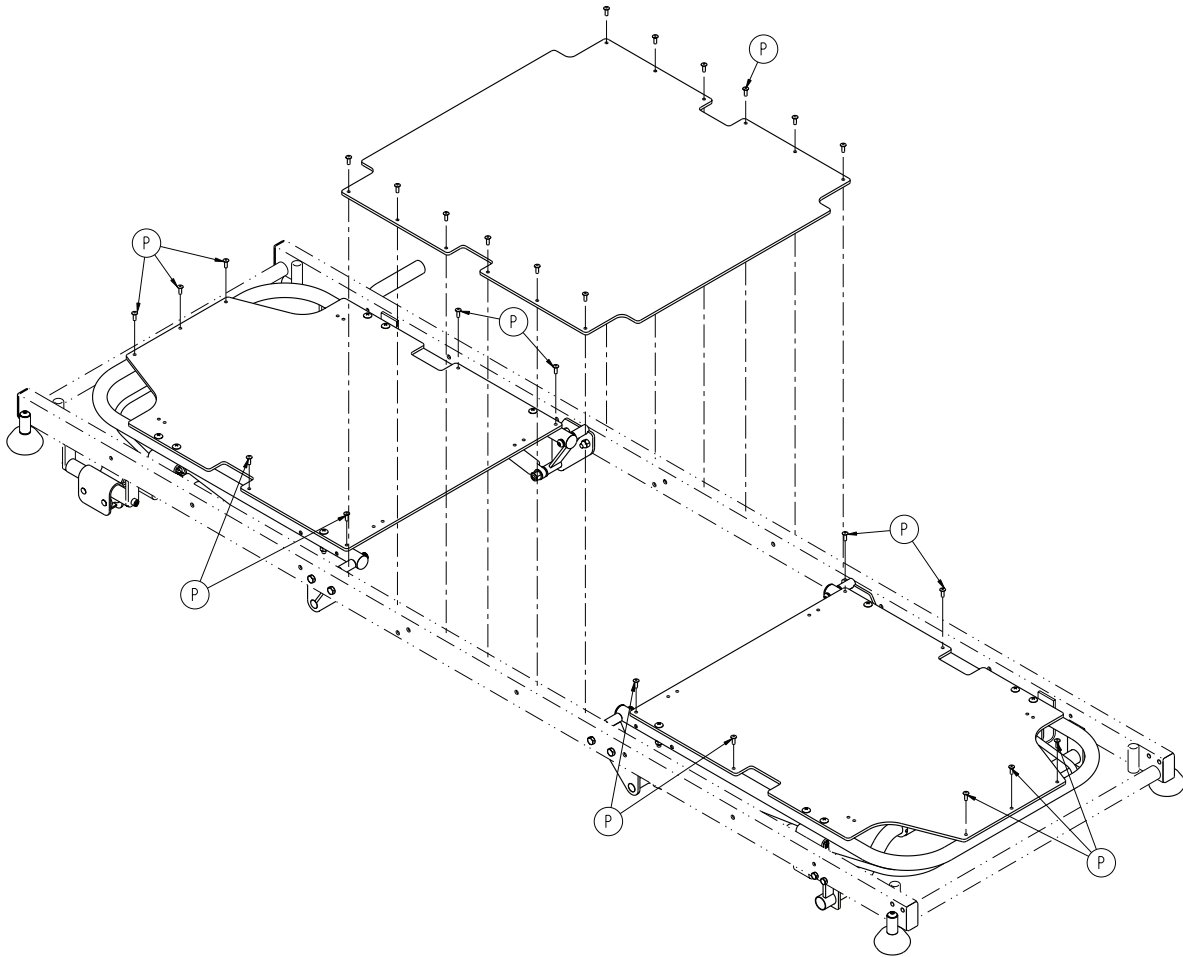
Item	Number	Name	Quantity
A	0715-001-180	Cam bearing	2
B	0715-201-062	Threaded stud assembly	1
C	0014-004-000	Washer	4
D	0028-008-000	External retaining ring	2

Litter assembly

1080-030-010 Rev G (Reference only)





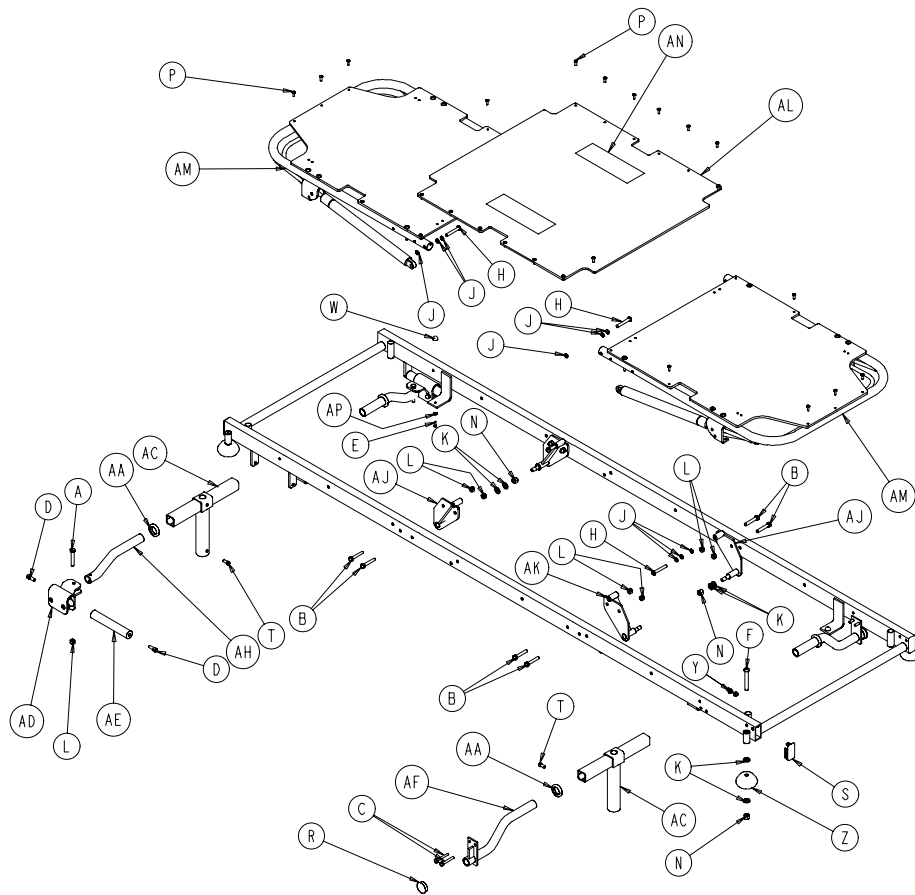


Item	Name	Number	Quantity
A	0003-040-000	Hex head cap screw	2
B	0003-068-000	Hex head cap screw	8
C	0003-078-000	Hex head cap screw	4
D	0004-021-000	Socket head cap screw	4
E	0004-049-000	Hex socket button head cap screw	4
F	0004-182-000	Button head cap screw	4
G	0004-183-000	Button head cap screw	4
H	0014-003-000	Washer	12
J	0014-021-000	Washer	16
K	0015-060-000	Metric hex nut	4
L	0016-028-000	Hex nut	4
M	0016-035-000	Nylock hex nut	8
N	0016-036-000	Nylock hex nut	10
P	0025-050-000	Dome head rivet	26
R	0037-030-000	Heyco hole plug	2
T	0037-206-000	Rectangular hole plug	4
U	0046-001-000	Set screw	2
V	0056-004-000	Rubber bumper	4
W	0721-031-065	Heyco hole plug	8
Y	0926-400-142	Bumper	4
AA	0938-001-401	Collar	4

Item	Name	Number	Quantity
AB	1010-031-078	Gas cylinder	4
AC	1010-032-085	Support tube assembly	2
AD	1020-001-049	Support tube and roller assembly	2
AE	1020-001-059	Trendelenburg roller bar	2
AF	1080-030-013	Jack support transition weldment	2
AG	1080-030-014	Jack support transition, foot end	2
AH	1080-030-023	Fowler pivot weldment, left	2
AJ	1080-030-024	Fowler pivot weldment, right	2
AK	1080-030-035	Mid-section skin	1
AL	1080-031-120	Pneumatic Fowler assembly	2
AM	7900-001-102	Velcro® adhesive pile	2.25

Litter assembly, high height option

1080-030-021 Rev - (Reference only)

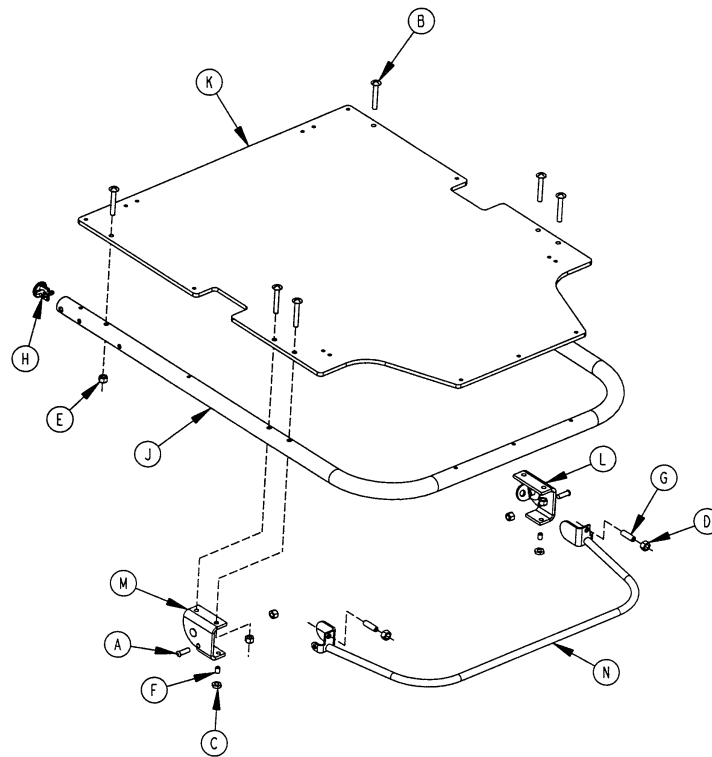


Item	Name	Number	Quantity
A	0003-040-000	Hex head cap screw	2
B	0003-068-000	Hex head cap screw	8
C	0003-078-000	Hex head cap screw	4
D	0004-021-000	Socket head cap screw	4
E	0004-049-000	Socket head cap screw	4
F	0004-182-000	Button head cap screw	4
H	0004-183-000	Button head cap screw	4
J	0014-003-000	Washer	12
K	0014-021-000	Washer	16
L	0016-036-000	Nylock nut	10
M	0016-028-000	Nylock nut	4
N	0016-035-000	Nylock nut	8
P	0025-050-000	Pop rivet	26
R	0037-030-000	Hole plug	2
S	0037-206-000	Hole plug	4
T	0046-003-000	Square head set screw	2
W	0056-004-000	Rubber bumper	4
Y	0721-031-065	Hole plug	8
Z	0926-400-142	Bumper wheel	4

Item	Name	Number	Quantity
AA	0938-001-401	Collar	4
AB	1010-031-078	Gas cylinder	4
AC	1080-032-085	High height support tube assembly	2
AD	1020-001-049	Support tube/roller assembly	2
AE	1020-001-059	Trendelenburg roller bar	2
AF	1080-030-013	Jack support transition	2
AH	1080-030-014	Jack support transition, foot end	2
AJ	1080-030-023	Fowler pivot weldment, left	2
AK	1080-030-024	Fowler pivot weldment, right	2
AL	1080-030-035	Mid-section skin	1
AM	1080-031-120	Pneumatic Fowler assembly	2
AN	7900-001-102	Velcro® adhesive pile	2
AP	0011-016-000	Washer	4

Pneumatic Fowler assembly

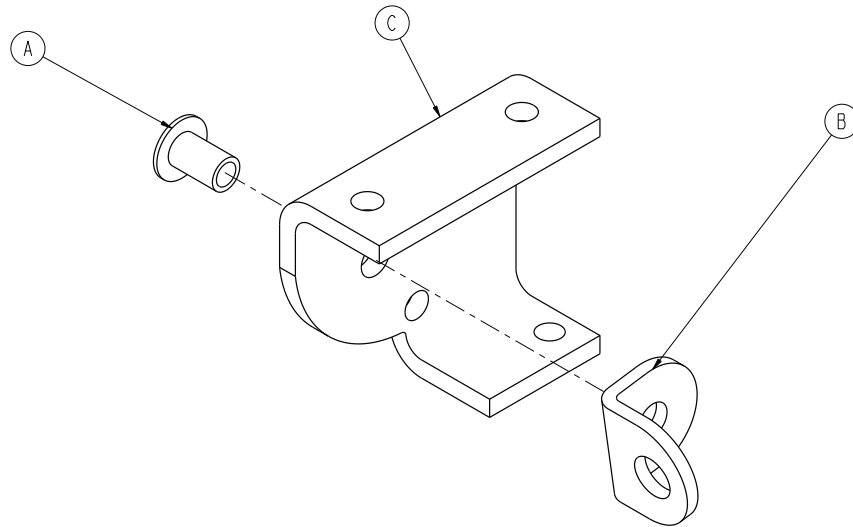
1080-031-120 Rev - (Reference only)



Item	Name	Number	Quantity
A	0004-161-000	Button head cap screw	2
B	0007-020-000	Truss head machine screw	6
C	0015-037-000	Jam nut	2
D	0015-050-000	Hex nut	2
E	0016-028-000	Nylock nut	8
F	0021-125-000	Set screw	2
G	0021-126-000	Set screw	2
H	1001-001-036	Hole plug	2
J	1001-031-013	Fowler tube	1
K	1010-231-012	Fowler skin	1
L	1210-031-106	Outer housing assembly, right	1
M	1210-031-107	Outer housing assembly, left	1
N	1210-031-118	Trip bar assembly	1

Outer housing assembly, right - 1210-031-106

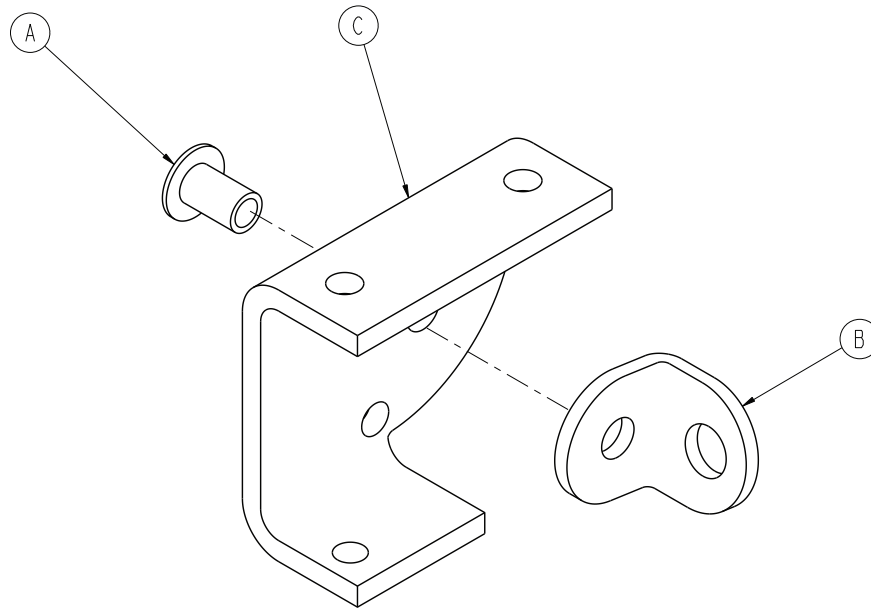
Rev A (Reference only)



Item	Number	Name	Quantity
A	0025-174-000	Rivet	1
B	1210-031-103	Pivot tab	1
C	1210-031-104	Outer housing, right	1

Outer housing assembly, left - 1210-031-107

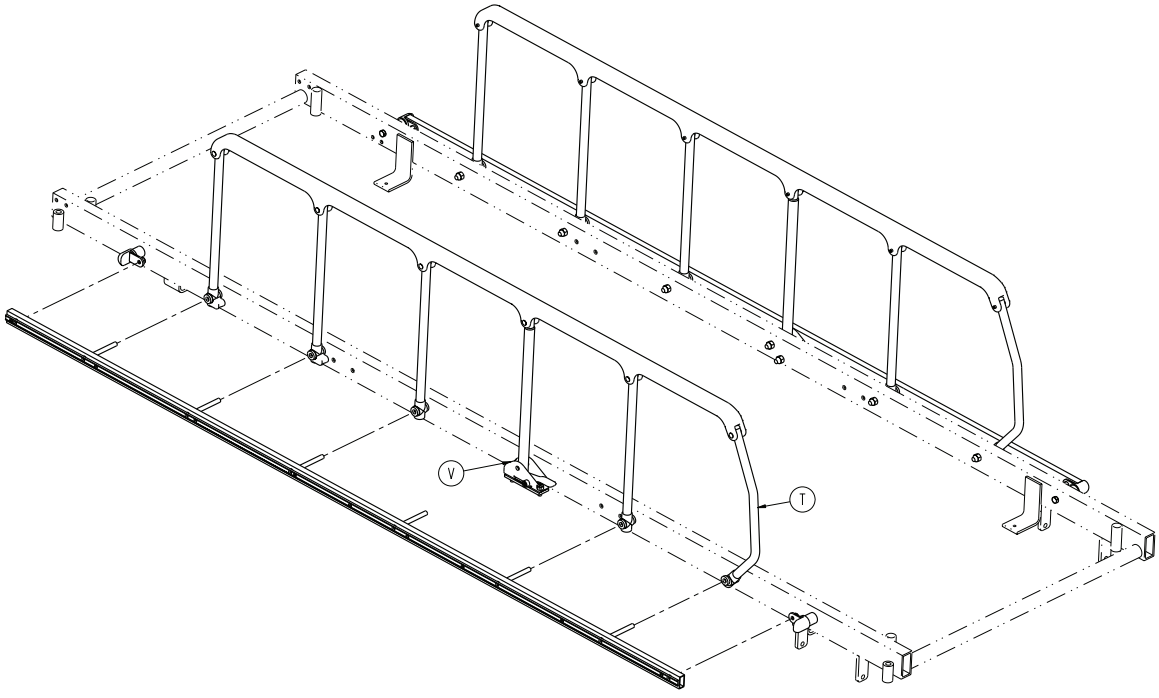
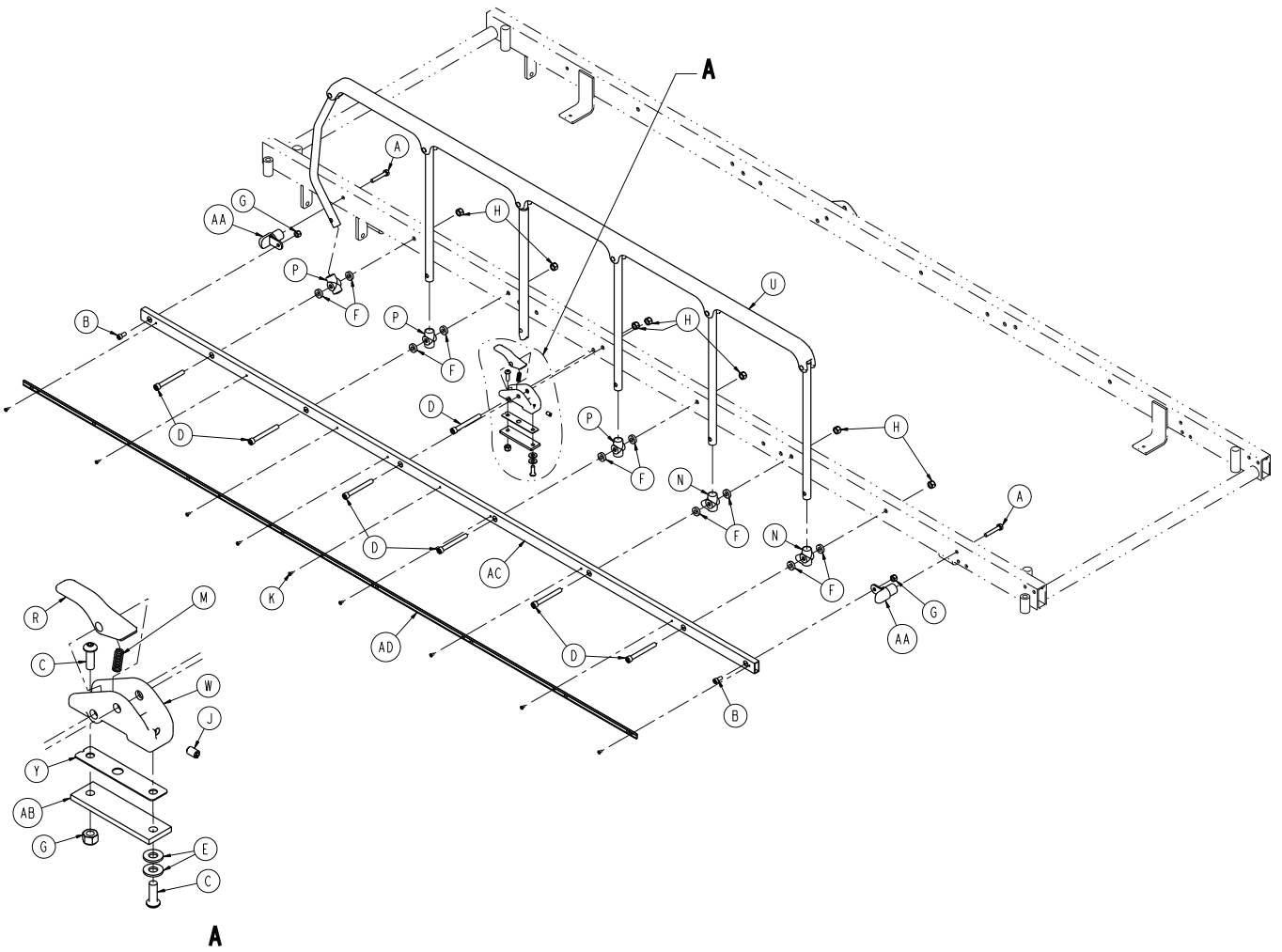
Rev A (Reference only)



Item	Number	Name	Quantity
A	0025-174-000	Rivet	1
B	1210-031-103	Pivot tab	1
C	1210-031-105	Outer housing, left	1

Siderail assembly to litter

1080-020-010 Rev C (Reference only)

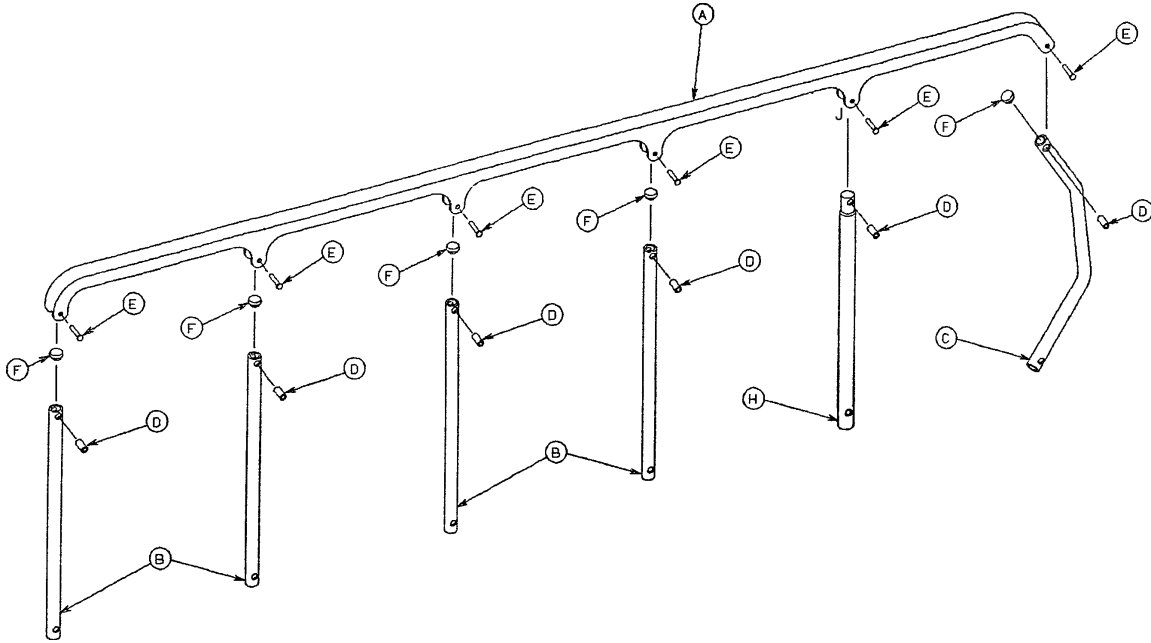


Item	Name	Number	Quantity
A	0003-047-000	Hex head cap screw	4
B	0004-018-000	Socket head cap screw	4
C	0004-161-000	Button head cap screw	4
D	0004-272-000	Socket head cap screw	14
E	0011-002-000	Washer	4
F	0014-070-000	Washer	20
G	0016-028-000	Hex nut	6
H	0016-036-000	Nylock hex nut	14
J	0021-104-000	Set screw	2
K	0025-038-000	Dome head rivet	18
M	0038-220-000	Compression spring	2
N	0721-026-068	Upright cradle	4
P	0721-026-069	Upright sleeve	6
R	0721-026-074	Lock handle	2
T	1010-026-017	Siderail assembly, right	1
U	1010-026-019	Siderail assembly, left	1
V	1010-026-086	Lock housing assembly, right	1
W	1010-026-087	Lock housing assembly, left	1
Y	1010-026-103	Spring retainer	2
AA	1080-030-016	Bumper transition weldment	4
AB	1080-030-031	Backer	2
AC	1080-030-032	Siderail tube	2
AD	1080-030-033	Bumper channel	2

Siderail assembly

1010-026-017 Rev D (Reference only)

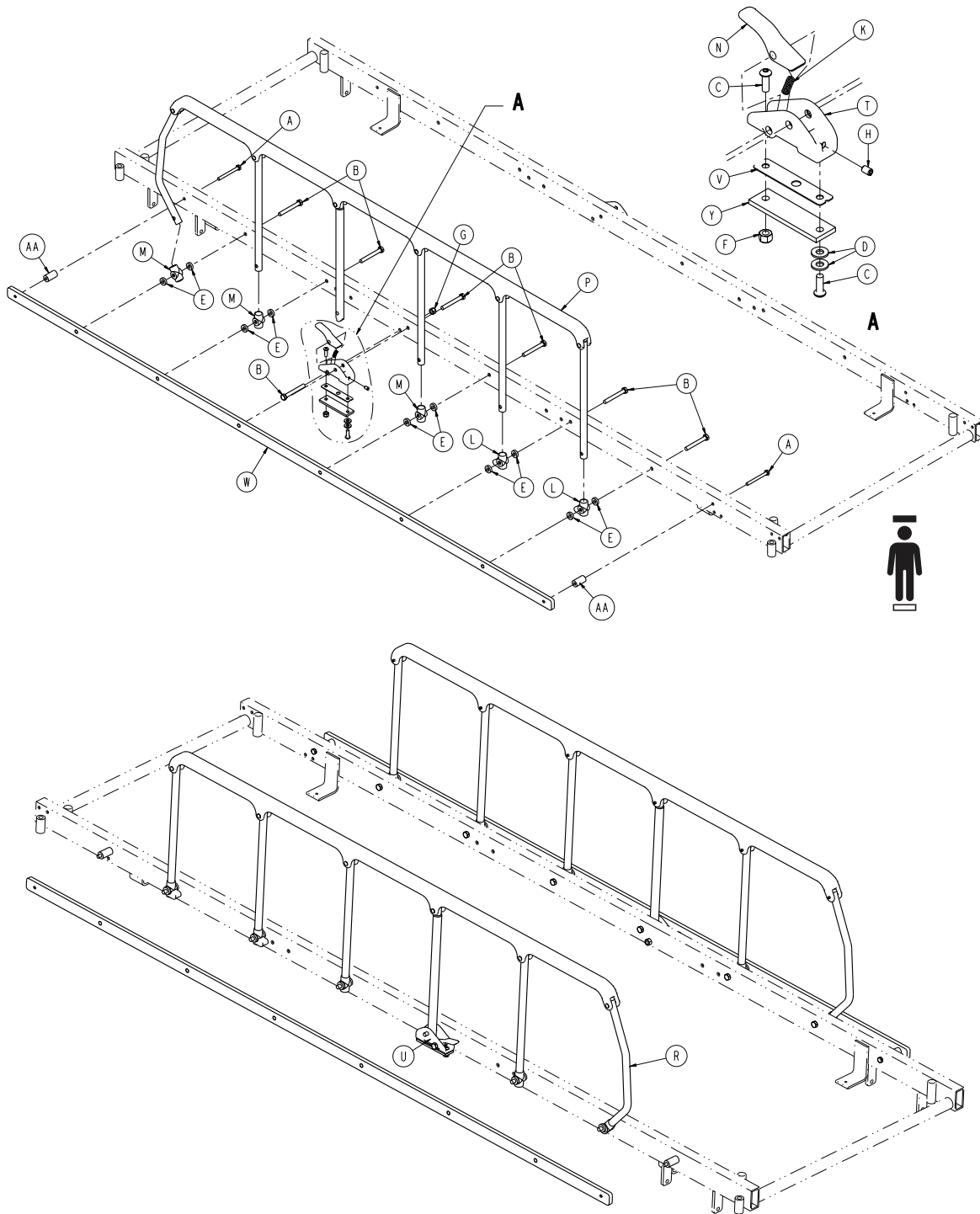
1010-026-019 Rev D (Reference only)



Item	Number	Name	Quantity
A	1010-026-015	Top rail	1
B	1010-026-083	Upright	4
C	1010-026-084	Upright, bent	1
D	1010-026-082	Sleeve bearing	6
E	0025-106-000	Blind rivet	6
F	1010-026-010	Round hole plug	4
H	1010-026-085	Upright, latch	1
J	1010-026-012	Bent spindle rest	1

Accessory rail to litter assembly

1080-022-010 Rev C (Reference only)

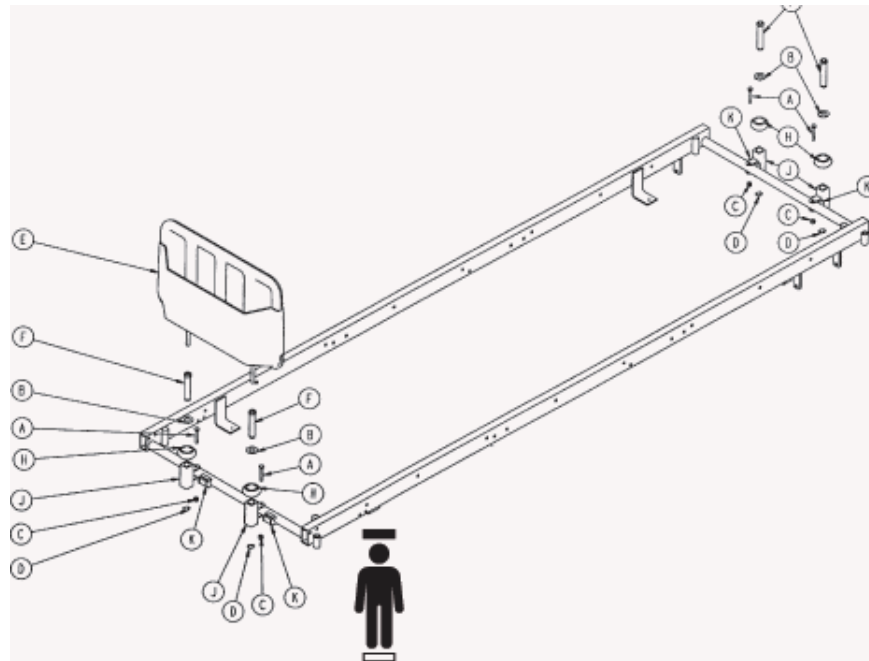


Item	Name	Number	Quantity
A	0003-023-000	Hex head cap screw	4
B	0003-082-000	Hex head cap screw	14
C	0004-161-000	Button head cap screw	4
D	0011-002-000	Washer	4
E	0014-070-000	Washer	20

Item	Name	Number	Quantity
F	0016-028-000	Hex nut	2
G	0016-036-000	Nylock hex nut	2
H	0021-104-000	Set screw	2
K	0038-220-000	Compression spring	2
L	0721-026-068	Upright cradle	4
M	0721-026-069	Upright sleeve	6
N	0721-026-074	Lock handle	2
P	1010-026-017	Siderail assembly, right	1
R	1010-026-019	Siderail assembly, left	1
T	1010-026-086	Lock housing assembly, right	1
U	1010-026-087	Lock housing assembly, left	1
V	1010-026-103	Spring retainer	2
W	1080-022-015	Accessory rail bar	2
Y	1080-030-031	Backer	2
AA	1080-030-038	Sleeve	4

Footboard/chart holder

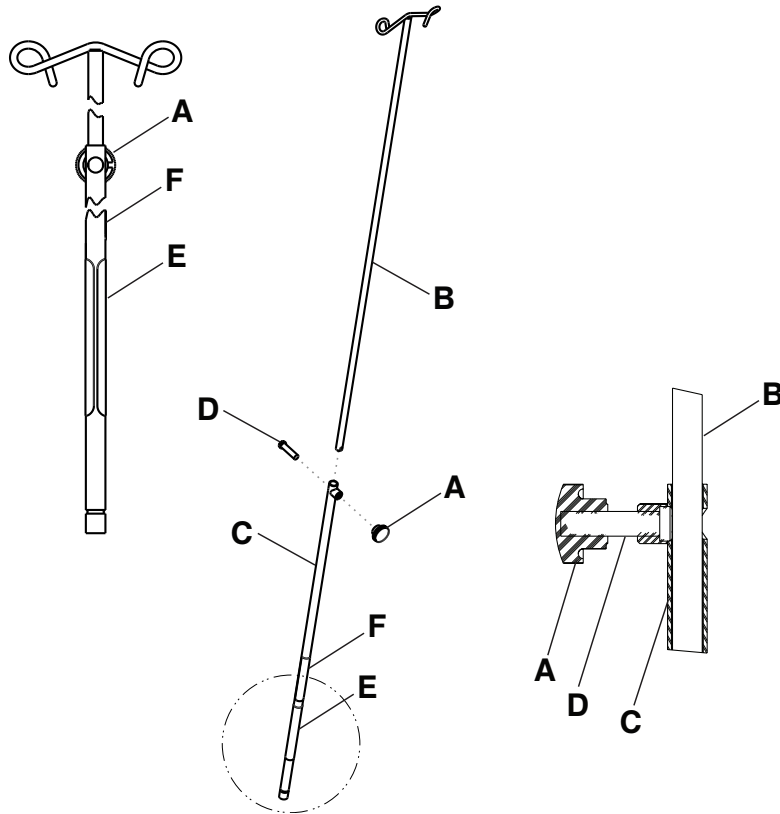
1080-134-010 Rev C (Reference only)



Item	Name	Number	Quantity
A	0003-078-000	Hex head cap screw	4
B	0014-071-000	Nylon washer	4
C	0016-028-000	Fiberlock nut	4
D	0028-072-000	Retaining ring	4
E	0785-045-500	Footboard/chart holder	1
F	1001-040-012	Footboard receptacle	4
H	1010-051-018	Bumper	4
J	1080-134-012	Board support weldment	4
K	1080-134-013	Locking bracket	4

Havasu IV pole, removable - 0390-025-000

Rev AA (Reference only)

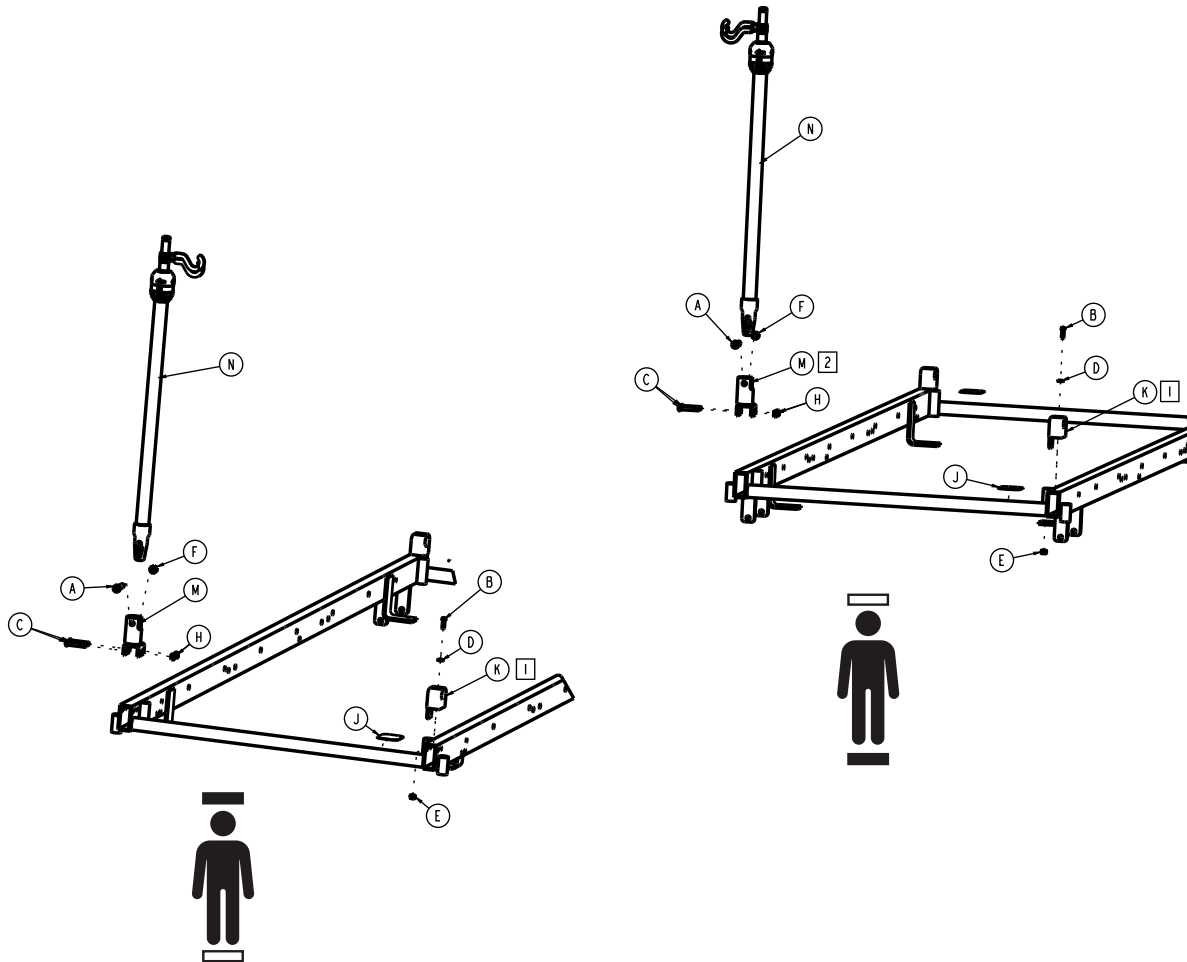


Item	Number	Name	Quantity
A	0390-003-056	Knob	1
B	0390-003-053	Double IV assembly	1
C	0393-003-043	Chrome tube assembly	1
D	0004-496-000	Socket head cap screw	1
E	0390-125-011	Label, IV pole, removable	1
F	108900350901	Label, EAR	1

IV pole assembly, permanent

1080-110-000 Rev AA (Reference only)

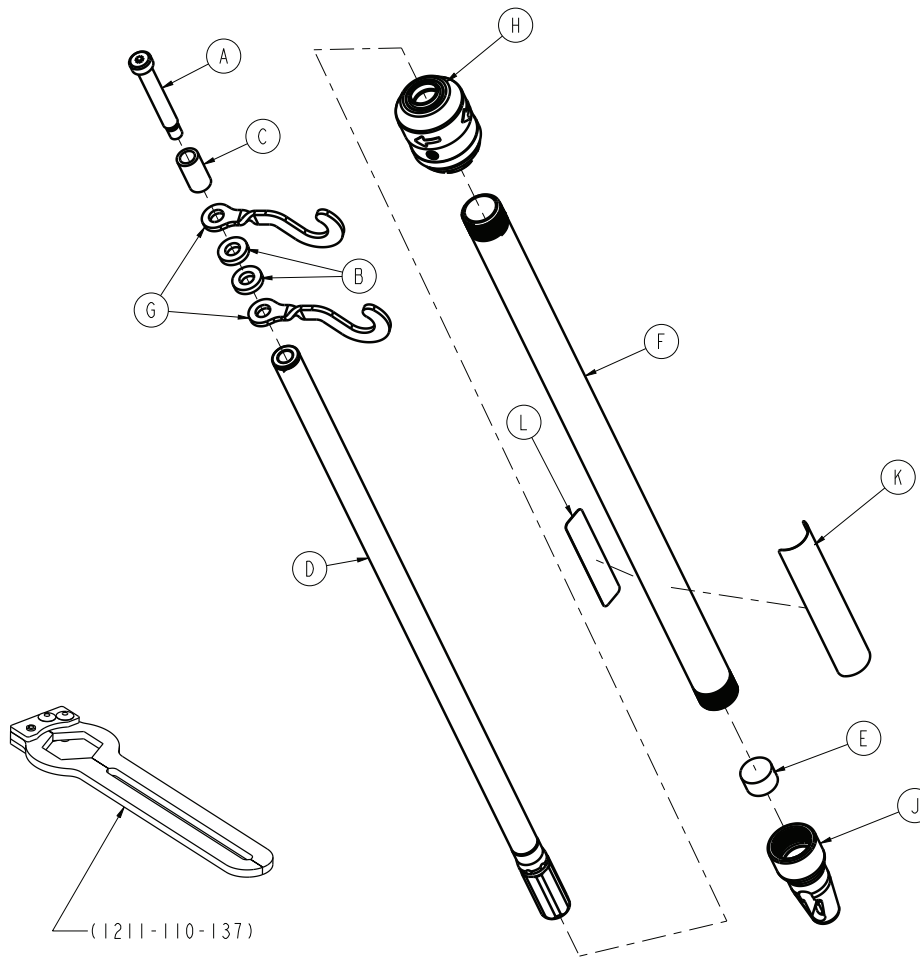
1080-112-000 Rev AA (Reference only)



Item	Name	Number	Quantity
A	0004-091-000	Button head cap screw	1
B	0004-169-000	Button head cap screw	1
C	0004-135-000	Button head cap screw	2
D	0011-016-000	Washer	1
E	0016-003-000	Fiberlock nut	1
F	0016-036-000	Fiberlock nut	1
H	0016-005-000	Conelock nut	2
J	1001-001-056	Round hook protector	1
K	1001-059-012	IV clip	1
M	1080-110-112	IV pivot weldment	1
N	1211-210-010	<i>Two-stage IV pole assembly - 1211-210-1010 (page 46)</i>	

Two-stage IV pole assembly - 1211-210-010

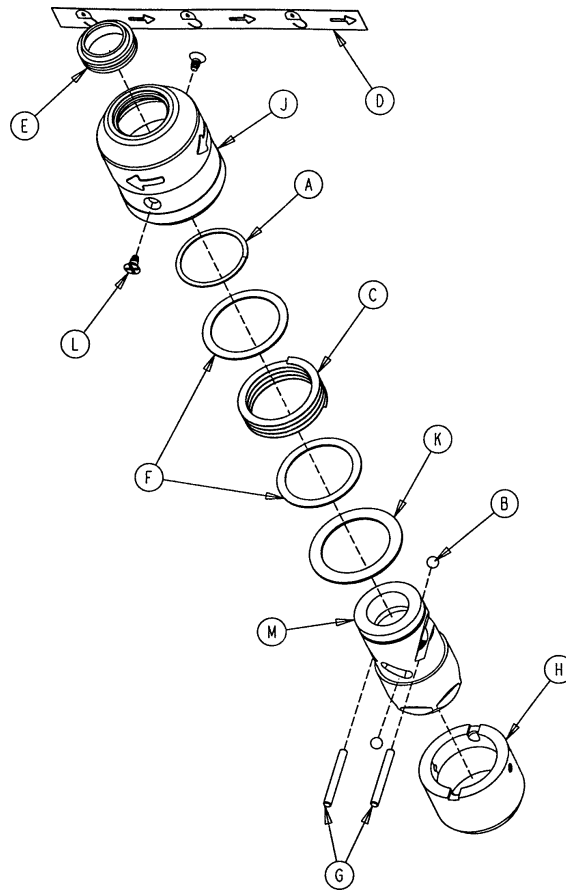
Rev AA (Reference only)



Item	Number	Name	Quantity
A	0008-031-000	Socket head set screw	1
B	0052-017-000	Spacer	2
C	0926-400-162	Spacer	1
D	1211-210-029	2nd stage assembly	1
E	1001-259-013	Dampener	1
F	1001-159-028	Base tube	1
G	1010-059-016	IV hook	2
H	1211-210-026	IV pole latch assembly (page 47)	1
J	1001-359-112	Pivot	1
K	108900350001	Label, specification	1
L	108900350901	Label, EAR	1

IV pole latch assembly

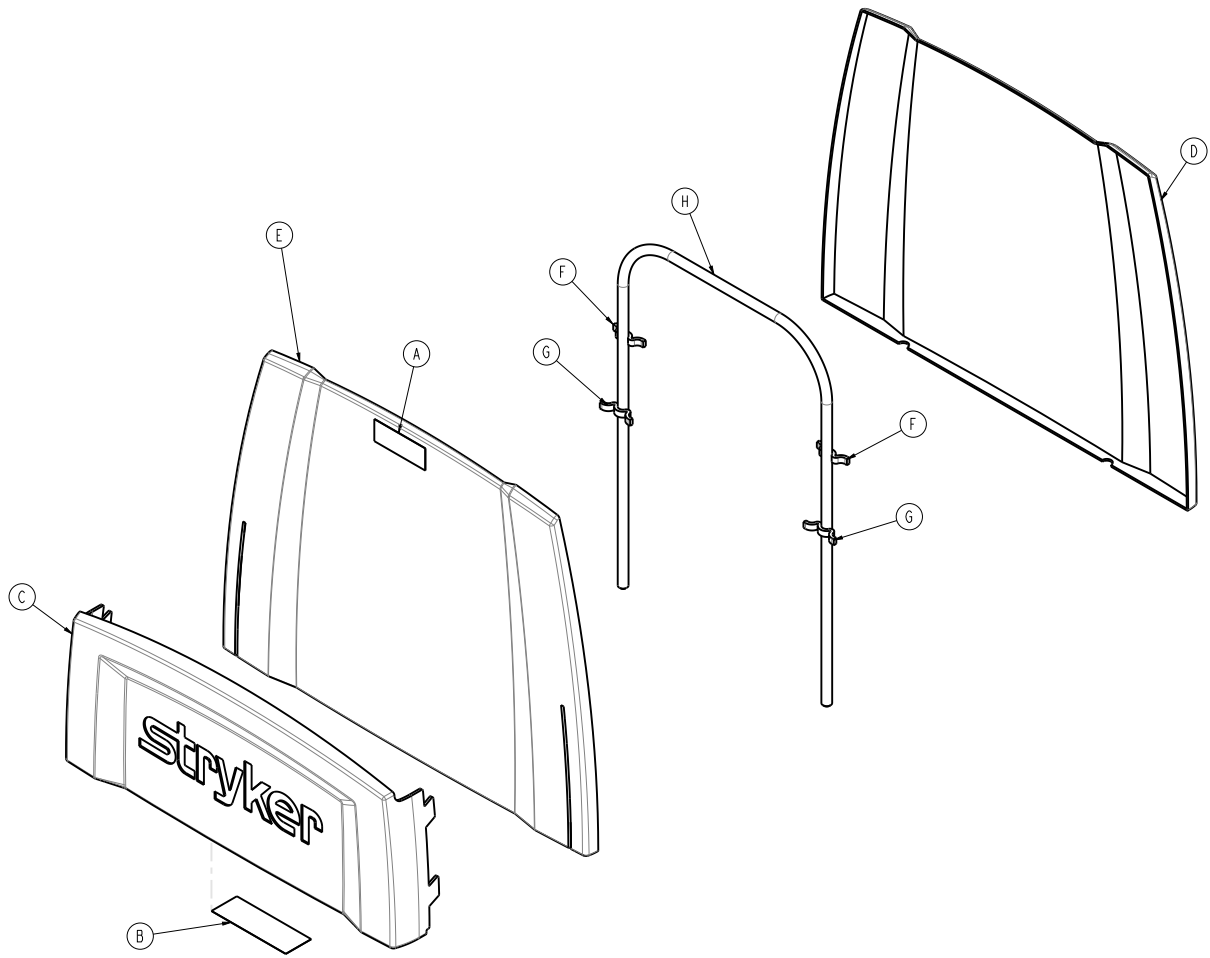
1211-210-026 Rev B (Reference only)



Item	Number	Name	Quantity
A	0028-167-000	Retaining ring	1
B	0031-004-000	Steel ball	2
C	0038-392-000	Crest-to-crest spring	1
D	1211-091-034	Euro label, release	1
E	1211-110-018	IV latch seal	1
F	1211-110-020	Washer	2
G	1211-110-021	IV latch locking pin	2
H	1211-110-022	IV latch guide	1
J	1211-110-024	IV latch, OD housing	1
K	1211-110-035	Washer	1
L	1211-110-036	Self-tapping screw	2
M	1211-210-023	IV latch inner ID housing	1

Footboard/chart holder - 0785-045-500

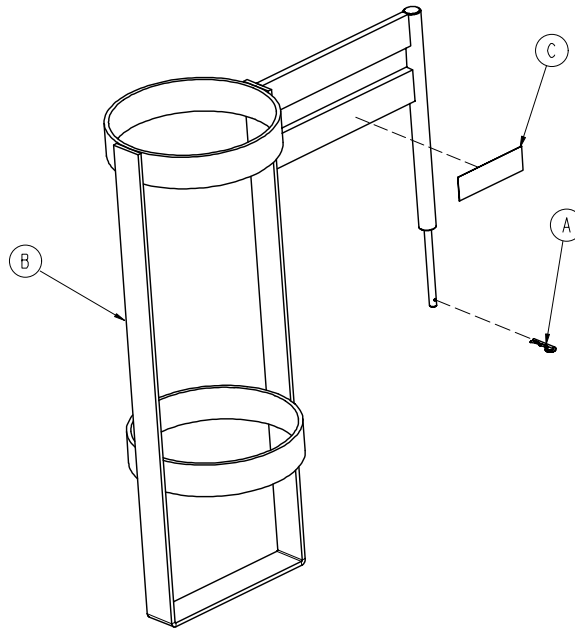
Rev AA (Reference only)



Item	Number	Name	Quantity
A	0785-045-402	Label, push/pull	1
B	0785-045-501	Label, footboard	1
C	0785-045-511	Chart holder thermoform	1
D	0785-045-512	Footboard, back	1
E	0785-045-513	Footboard, front	1
F	0785-045-514	Small standoff	2
G	0785-045-515	Large standoff	2
H	0946-029-010	Support	1

Upright oxygen bottle holder assembly - 1020-130-000

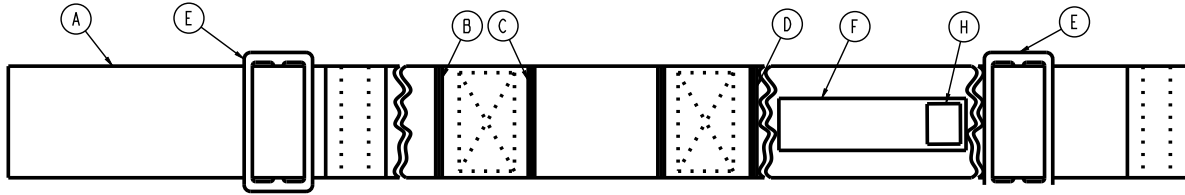
Rev A (Reference only)



Item	Number	Name	Quantity
A	0027-030-000	Hair pin cotter	1
B	1020-030-111	Upright bottle holder	1
C	1020-030-117	Label, oxygen bottle holder	1

Ankle restraint strap - 0946-043-001

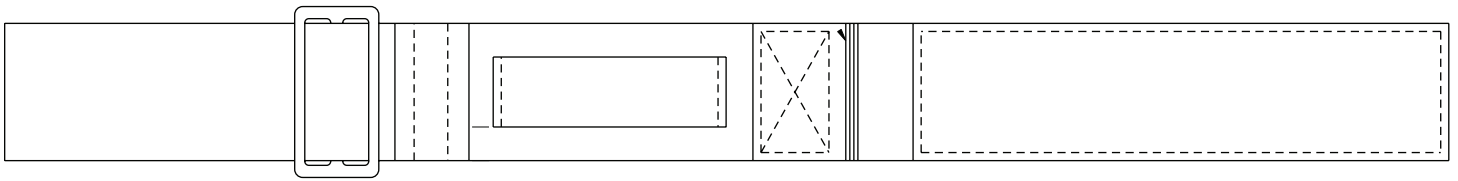
Rev AC (Reference only)



Item	Number	Name	Quantity
A	7900-001-011	Nylon webbing	1
B	7900-001-011	Nylon webbing	2
C	7900-001-101	Velcro® pile	2
D	7900-001-100	Velcro® hook	2
E	0390-057-014	Buckle	2
F	0946-001-085	Label, ankle restraint	1
H	0036-019-968	Label, JAC restraint symbols	1

Wrist restraint strap - 0946-044-000

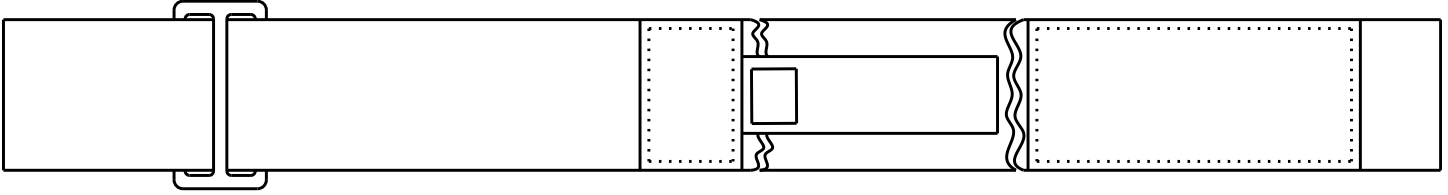
Rev C (Reference only)



Number	Name
0946-044-001	Wrist restraining strap

Body restraint strap - 0390-019-000

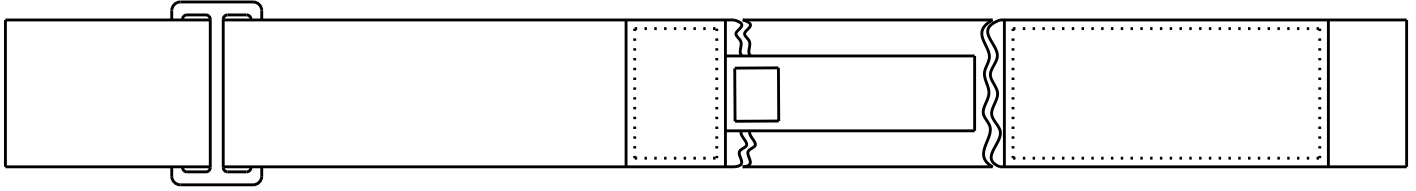
Rev AC (Reference only)



Number	Name
0390-019-001	Restraining strap, long
0390-019-002	Restraining strap, short

Chest restraint strap - 1010-058-000

Rev AC (Reference only)



Number	Name
0390-019-001	Restraining strap, long
0390-019-002	Restraining strap, short

Full restraint strap package - 1010-077-000

Rev C (Reference only)

Number	Name
0390-019-000	Body restraint
0946-043-001	Ankle restraint strap assembly
0946-044-001	Wrist restraint
1010-058-000	Chest restraint

stryker

Stryker Corporation or its divisions or other corporate affiliated entities own, use or have applied for the following trademarks or service marks: **Havasu, Stryker**. All other trademarks are trademarks of their respective owners or holders.



Stryker Medical
3800 E. Centre Avenue
Portage, MI 49002
USA