

## Prime TC

### Maintenance Manual

**REF** 1460

Transport Chair





# Table of Contents

Warning/Caution/Note Definition .....	3
Summary of safety precautions .....	3
Pinch points .....	3
Introduction for service .....	4
Expected service life .....	4
Contact information .....	4
Serial number location .....	4
Preventive maintenance .....	5
Service .....	6
Seat back removal .....	6
Seat back replacement .....	6
Chart holder replacement .....	7
Seat replacement .....	8
Flip-up armrest replacement .....	9
Front caster wheel replacement .....	10
Front caster assembly replacement .....	11
Swing-away footrest replacement .....	12
Rear wheel replacement .....	13
Pedal replacement .....	14
Brake finger assembly replacement .....	16
IV pole components .....	18
IV pole removal .....	18
IV pole installation .....	19
IV pole topper replacement .....	19
Lap belt assembly installation .....	20
Lap belt removal .....	21
Lap belt installation .....	22
Leg rest components .....	23
Leg rest installation .....	24
Leg rest leg replacement .....	25
Leg rest adjustment .....	25
Swing-away frame and footrest assembly .....	26
Swing-away footrest assembly, left .....	27
Swing-away footrest assembly, right .....	28
Common components .....	29
Brake assembly .....	32
No ground chain option .....	34
Ground chain option .....	35
Swivel caster assembly .....	36
Armrest assembly .....	37
Armrest assembly, right .....	38
Armrest assembly, left .....	39
No oxygen bottle holder .....	40
Oxygen bottle holder .....	41
Oxygen bottle holder .....	42
Non-padded seat .....	43
Padded seat option - 1460-013-050 .....	44
No IV pole - 1460-035-100 .....	45
Havasu IV pole - 1460-035-000 .....	46
Lap belt - 1460-013-100 .....	47

Foley bag hook - 1460-101-150 .....48  
Foley bag hook with leg rest .....49  
Leg rest - 1460-166-030 .....50  
Leg rest latch assembly, left - 1460-166-040 .....52  
Leg rest latch assembly, right - 1460-166-080 .....53  
No leg rest - 1460-066-100.....54



# Warning/Caution/Note Definition

The words **WARNING**, **CAUTION**, and **NOTE** carry special meanings and should be carefully reviewed.

## WARNING

Alerts the reader about a situation which, if not avoided, could result in death or serious injury. It may also describe potential serious adverse reactions and safety hazards.

## CAUTION

Alerts the reader of a potentially hazardous situation which, if not avoided, may result in minor or moderate injury to the user or patient or damage to the product or other property. This includes special care necessary for the safe and effective use of the device and the care necessary to avoid damage to a device that may occur as a result of use or misuse.

**Note** - Provides special information to make maintenance easier or important instructions clearer.

## Summary of safety precautions

Always read and strictly follow the warnings and cautions listed on this page. Service only by qualified personnel.

### Pinch points

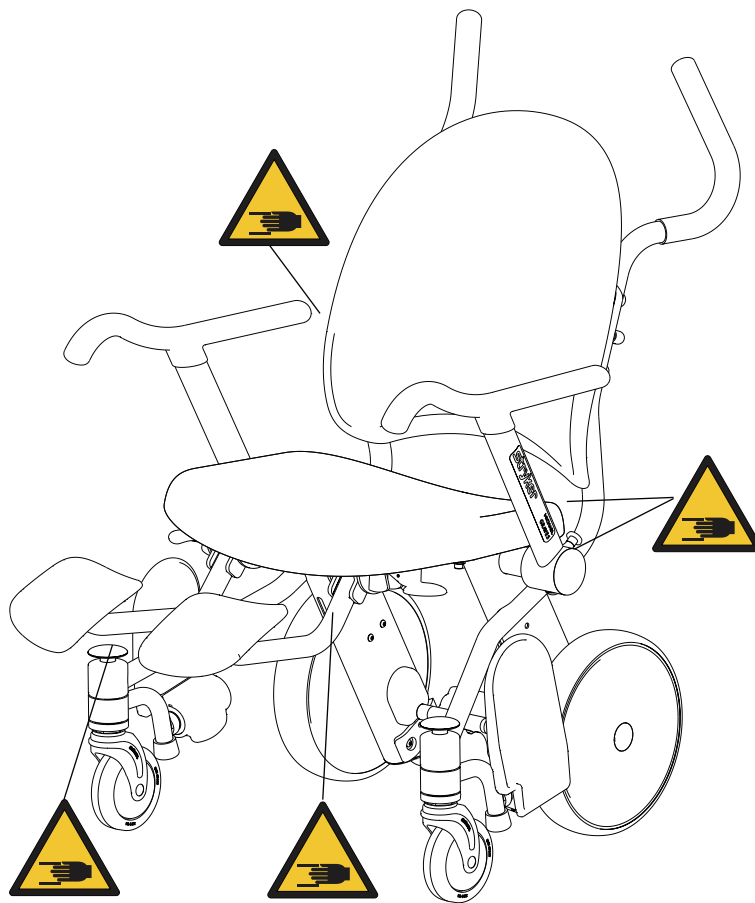


Figure 1 – Pinch points

## Introduction for service

This manual assists you with the service of your Stryker product. Read this manual to service this product. This manual does not address the operation of this product. See the Operations Manual for operating and use instructions. To view your Operations Manual online, see <https://techweb.stryker.com/>.

## Expected service life

Prime TC has a five year expected service life under normal use, conditions, and with appropriate periodic maintenance.

## Contact information

Contact Stryker Customer Service or Technical Support at: 1-800-327-0770.

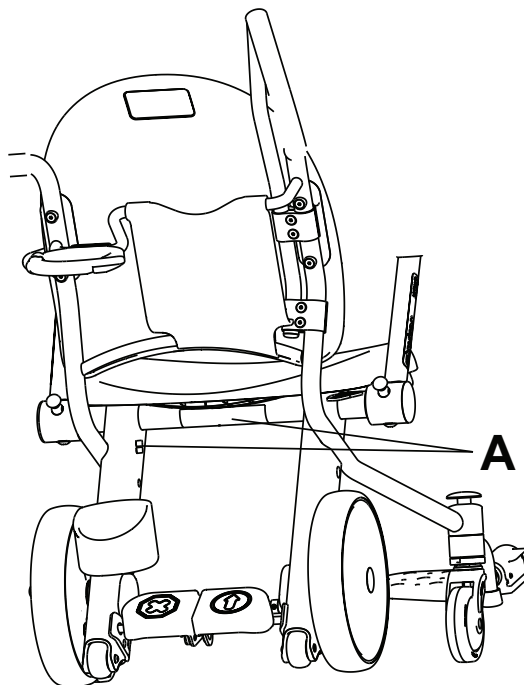
Stryker Medical  
3800 E. Centre Avenue  
Portage, MI 49002  
USA

**Note** - The user and/or the occupant should report any serious product-related incident to both the manufacturer and the Competent authority of the European Member State where the user and/or occupant is established.

To view your operations or maintenance manual online, see <https://techweb.stryker.com/>.

Have the serial number (A) of your Stryker product available when calling Stryker Customer Service or Technical Support. Include the serial number in all written communication.

## Serial number location



# Preventive maintenance

Remove the product from service before you perform the preventive maintenance inspection. Check all items listed during annual preventive maintenance for all Stryker Medical products. You may need to perform preventive maintenance checks more often based on your level of product usage. Service only by qualified personnel.

**Note** - Clean and disinfect the product before inspection, if applicable.

Inspect the following items:

- \_\_\_\_\_ All welds
- \_\_\_\_\_ All fasteners are secure
- \_\_\_\_\_ Seat and seat back are not cracked or damaged
- \_\_\_\_\_ Chart holder is not cracked or damaged
- \_\_\_\_\_ Flip-up armrests raise, lower, and latch
- \_\_\_\_\_ Casters are secure and swivel
- \_\_\_\_\_ Casters are free of wax and debris
- \_\_\_\_\_ Wheels operate and rotate without resistance
- \_\_\_\_\_ Brake mechanism functions
- \_\_\_\_\_ Both rear wheels lock when the brake is applied
- \_\_\_\_\_ Rear wheels are not loose and do not wobble
- \_\_\_\_\_ Anti-tip wheels are intact
- \_\_\_\_\_ Footrest pivots up when not in use
- \_\_\_\_\_ Swing-away footrest locks in the use position
- \_\_\_\_\_ Swing-away footrest pivots to the stowed position when you depress the swing-away footrest release
- \_\_\_\_\_ IV pole option is intact and the topper is secure and is not broken
- \_\_\_\_\_ Oxygen bottle holder option is intact and can be latched and unlatched
- \_\_\_\_\_ Lap belt option is free of damage
- \_\_\_\_\_ Padded seat option is not torn or damaged
- \_\_\_\_\_ Leg rest option locks in the stowed position
- \_\_\_\_\_ Leg rest option pivots and locks in the use position
- \_\_\_\_\_ Lubricate leg rest option release latch

Product serial number:
Completed by:
Date:

# Service

## Seat back removal

### Tools required:

- 3/16" hex wrench
- 3/8" drive torque wrench (in-lb)

### Procedure:

1. Apply the brake. Push on the product to make sure that the brake works.
2. Using a 3/16" hex wrench, remove the four flat head cap screws (A), adaptors (B), and seat back (C) from the chair frame (Figure 2). Save the screws, adaptors, and seat back.

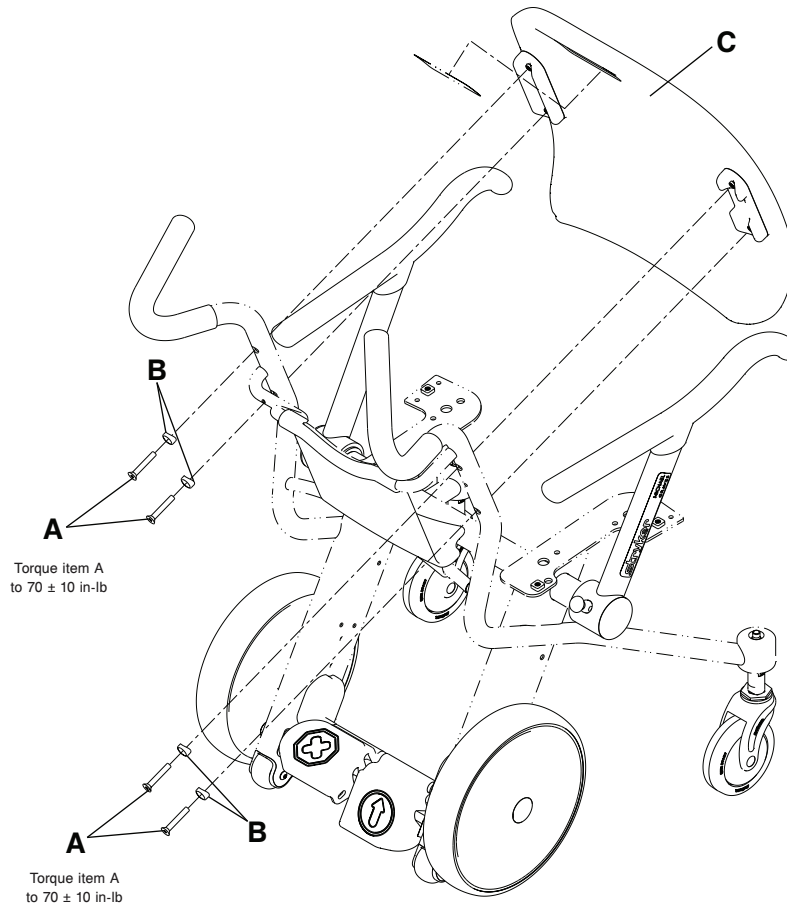


Figure 2 – Seat back removal

3. When you reinstall, use a 3/16" hex wrench to install the four flat head cap screws (A) and adaptors (B) (removed in step 2) to secure the seat back (C) to the chair frame. Using a 3/8" drive torque wrench, torque the screws to  $70 \pm 10$  in-lb.
4. Verify proper operation before you return the product to service.

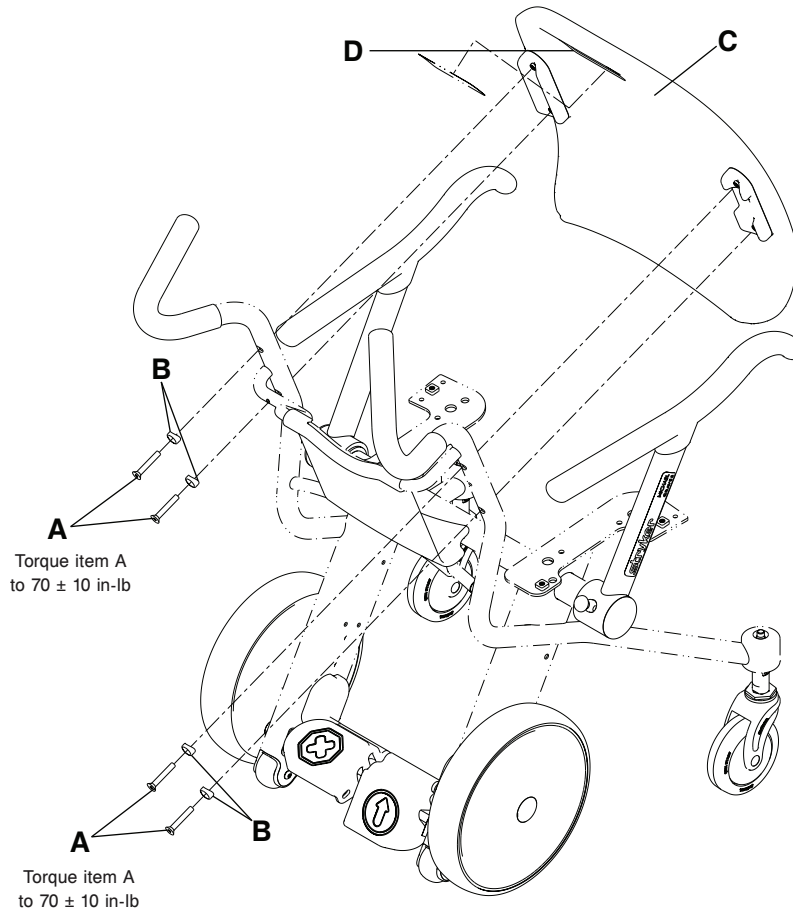
## Seat back replacement

### Tools required:

- 3/16" hex wrench
- 3/8" drive torque wrench (in-lb)

## Procedure:

1. Apply the brake. Push on the product to make sure that the brake works.
2. Using a 3/16" hex wrench, remove the four flat head cap screws (A), adaptors (B), and seat back (C) from the chair frame (Figure 3). Discard the screws, adaptors, and seat back.



**Figure 3 – Seat back replacement**

3. Using a 3/16" hex wrench, install the four supplied flat head cap screws (A) and adaptors (B) to secure the supplied seat back (C) to the chair frame. Using a 3/8" drive torque wrench, torque the screws to 70 ± 10 in-lb.
4. Affix the supplied Stryker label (D) in the appropriate color.
5. Verify proper operation before you return the product to service.

## Chart holder replacement

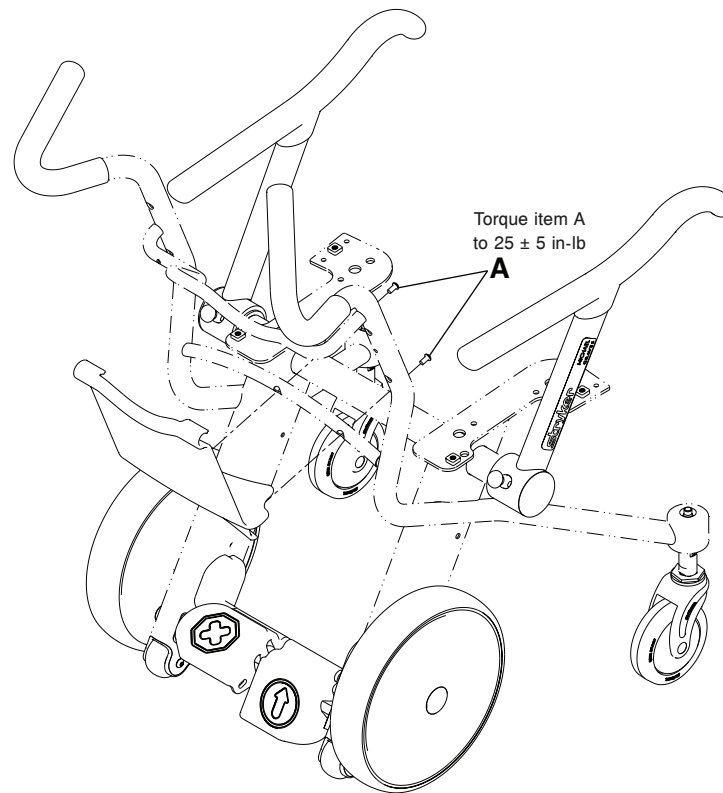
### Tools required:

- 5/32" hex wrench
- 3/8" drive torque wrench (in-lb)

### Procedure:

1. Apply the brake. Push on the product to make sure that the brake works.
2. Remove the seat back. See *Seat back removal* (page 6).
3. Using a 5/32" hex wrench, remove the two button head cap screws (A) that secure the bottom of the chart holder to the chair frame (Figure 4). Save the screws. When you reinstall, use a 3/8" drive torque wrench to torque the screws to 25 ± 5 in-lb.

4. Push back on the chart holder from the bottom to remove the chart holder from the lower chair frame. Push up to remove the chart holder from the upper chair frame.



**Figure 4 – Chart holder replacement**

5. Reverse steps 2-4 to install the supplied chart holder.
6. Verify proper operation before you return the product to service.

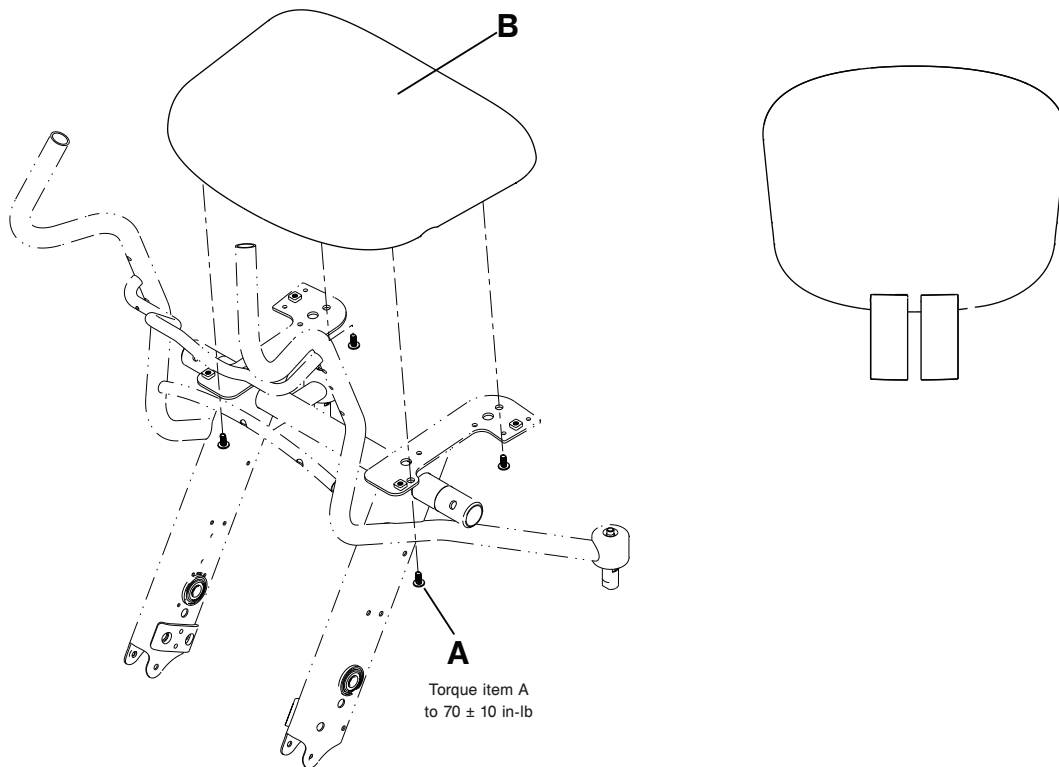
## Seat replacement

### Tools required:

- 3/16" hex wrench
- 3/8" drive torque wrench (in-lb)

### Procedure:

1. Using a 3/16" hex wrench, remove the four button head cap screws (A) that secure the seat (B) to the chair frame (Figure 5). Remove the seat. Discard the seat and screws.
2. Using a 3/16" hex wrench, install the four supplied button head cap screws (A) to secure the supplied seat (B) to the chair frame. Using a 3/8" drive torque wrench, torque the screws to  $70 \pm 10$  in-lb.



**Figure 5 – Seat replacement**

**Note** - Start all four button head cap screws by hand before you use a 3/16" hex wrench to tighten.

3. Verify proper operation before you return the product to service.

## Flip-up armrest replacement

### Tools required:

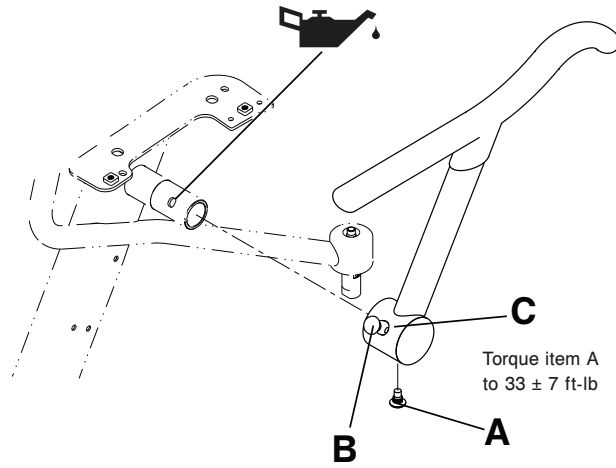
- 5/16" hex wrench
- Syn-Tech grease (3000-200-719)
- 3/8" drive torque wrench (ft-lb)

### Procedure:

1. Put the flip-up armrest in the forward and locked position.
2. Using a 5/16" hex wrench, remove the hard stop pin (A) from the bottom of the flip-up armrest (Figure 6). Discard the pin.
3. Using one hand, pull up on the armrest release pin (B) and use your other hand to pull out on the flip-up armrest (C) to remove the armrest.

**Note** - There is grease in the pivot area of the arm.

4. Grease the supplied armrest pivot with Syn-tech grease (3000-200-719).



**Figure 6 – Flip-up armrest replacement**

5. Pull up on the armrest release pin to install the supplied flip-up armrest onto the chair frame.
6. Using a 5/16" hex wrench, install the supplied hard stop pin (removed in step 2). Using a 3/8" drive torque wrench, torque the hard stop pin to  $33 \pm 7$  ft-lb.
7. Verify proper operation before you return the product to service.

## Front caster wheel replacement

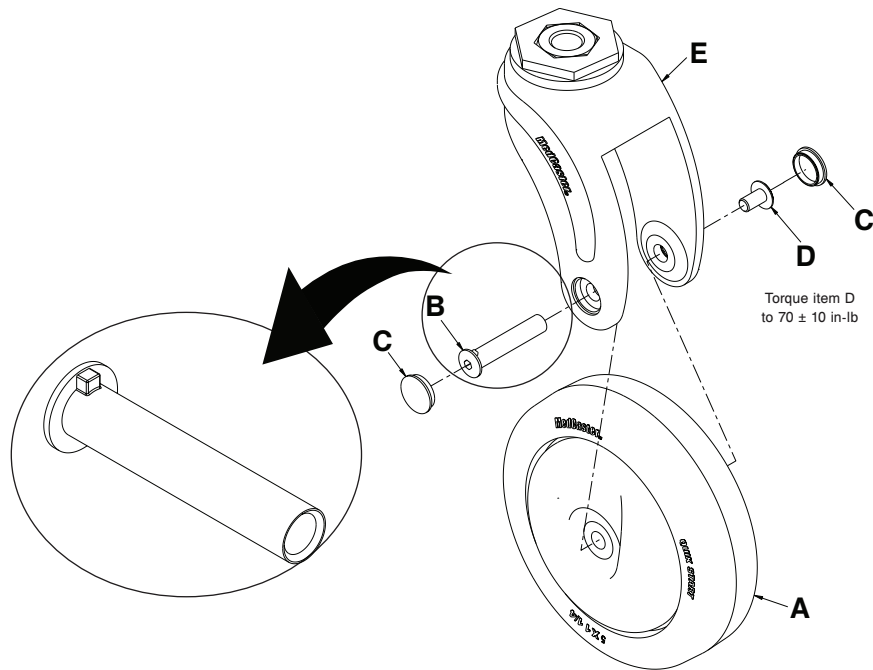
### Tools required:

- Pick
- (2) 5/32" hex wrench
- 3/8" drive torque wrench (in-lb)

### Procedure:

1. Position the chair on its back.
2. Using a pick, remove the caster wheel axle barrel nut covers (C) (Figure 7). Discard the nut covers.
3. Using two 5/32" hex wrenches, remove the axle barrel nut (B) and axle screw (D). Save the axle barrel nut and axle screw. When you reinstall, use a 3/8" drive torque wrench to torque the axle screw to  $70 \pm 10$  in-lb.
4. Grasp the caster wheel (A) and pull out to remove the wheel from the fork (E). Discard the wheel.





**Figure 7 – Front caster wheel replacement**

5. Reverse steps 2-4 to install the supplied caster.

**Note** - The axle barrel nut (B) head is keyed. Align the nut in the caster fork (E) when you reinstall.

6. Verify proper operation before you return the product to service.

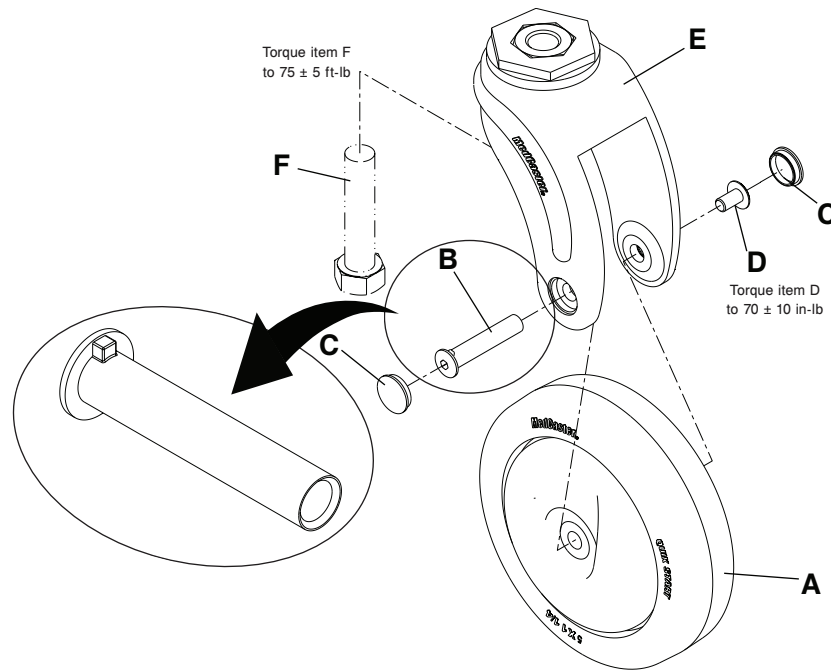
## Front caster assembly replacement

### Tools required:

- Pick
- (2) 5/32" hex wrench
- 3/4" socket
- 3/8" drive ratchet
- 3/8" drive torque wrench (ft-lb)
- 3/8" drive torque wrench (in-lb)

### Procedure:

1. Position the chair on its back.
2. Using a pick, remove and discard the caster wheel axle barrel nut covers (C) (Figure 8).
3. Using two 5/32" hex wrenches, remove the axle barrel nut (B) and axle screw (D). Discard the nut and screw.



**Figure 8 – Front caster assembly replacement**

4. Grasp the front caster wheel (A) and pull out to remove the wheel from the fork (E). Discard the front caster wheel.
5. Using a 3/4" socket and a 3/8" drive ratchet, remove the bolt (F) to remove the fork (E) from the chair frame. Discard the fork.
6. Reverse steps 2-5 to install the supplied front caster wheel assembly. Using a 3/8" drive torque wrench (ft-lb), torque the bolt (F) to  $75 \pm 5$  ft-lb before you install the caster to the fork. Using a 3/8" drive torque wrench (in-lb), torque the axle screw (D) to  $70 \pm 10$  in-lb.

**Note** - The axle barrel nut (B) head is keyed. Align the nut in the caster fork (E).

7. Verify proper operation before you return the product to service.

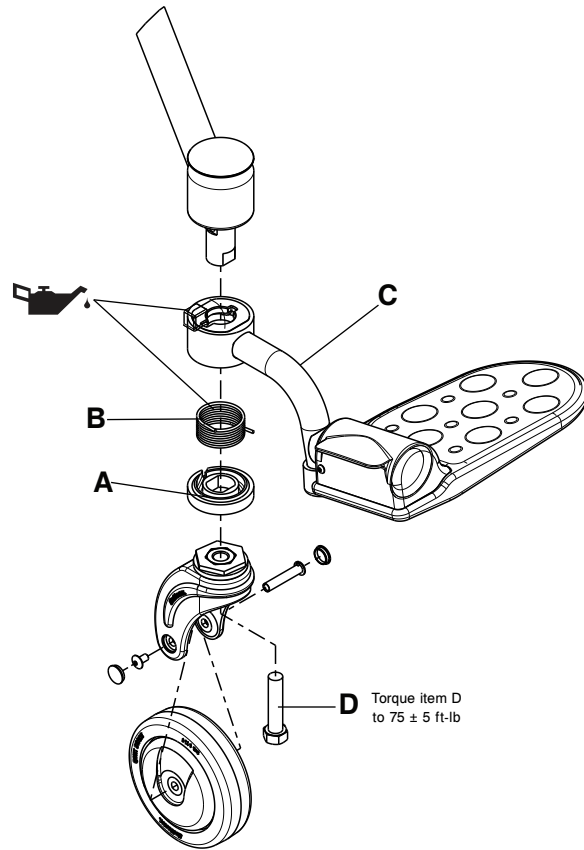
## Swing-away footrest replacement

### Tools required:

- 3/8" drive torque wrench (ft-lb)
- Syn-Tech grease (3000-200-719)

### Procedure:

1. Put the swing-away footrest into the stowed position. See *Stowing the swing-away footrest* in your product's operations manual.
2. Position the chair on its back.
3. Remove the front caster assembly. See *Front caster assembly replacement* (page 11). Save all parts.
4. Grasp and pull down to remove the lower footrest spring holder (A) (Figure 9). Discard the lower footrest spring holder.
5. Remove and discard the footrest torsion spring (B).
6. Using your hand, press on the footrest release pedal to relieve pressure on the locking bracket.
7. Rotate and pull down to remove the swing-away footrest assembly (C). Discard the assembly.



**Figure 9 – Swing-away footrest replacement**

8. Apply Syn-Tech grease (3000-200-719) to the applicable areas (Figure 9).
9. Reverse steps 3-8 to install the supplied swing-away footrest assembly. Using a 3/8" drive torque wrench, torque the caster fork bolt (D) to  $75 \pm 5$  ft-lb before you install the caster to the fork.
10. Verify proper operation before you return the product to service.

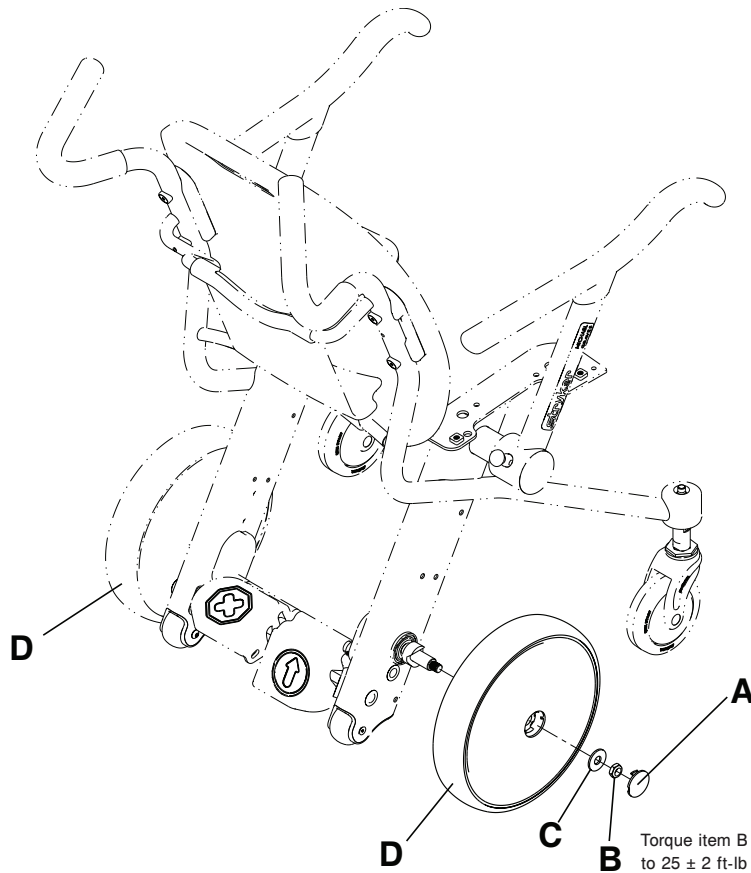
## Rear wheel replacement

### Tools required:

- Pick
- 3/4" socket
- 3/8" drive ratchet
- 3/8" drive torque wrench (ft-lb)

### Procedure:

1. Position the chair on its front.
2. Using a pick, remove the rear wheel center nut cover (A) (Figure 10). Discard the nut cover.
3. Using a 3/4" socket and a 3/8" drive ratchet, remove the rear wheel center nut (B). Discard the nut.



**Figure 10 – Rear wheel replacement**

4. Remove the center washer (C). Discard the washer.
5. Grasp the rear wheel with both hands and pull out to remove the rear wheel (D). Discard the rear wheel.
6. Reverse steps 2-5 to install the supplied rear wheel. Using a 3/8" drive torque wrench, torque the rear wheel center nut (B) to  $25 \pm 2$  ft-lb.
7. Verify proper operation before you return the product to service.

## Pedal replacement

### Tools required:

- 5/32" hex wrench
- 3/16" hex wrench
- Needle nose pliers
- 3/8" drive torque wrench (in-lb)

### Procedure:

1. Position the chair on its front.
2. Remove both rear wheels. See *Rear wheel replacement* (page 13). Save all parts.
3. Using a 5/32" hex wrench and a 3/16" hex wrench, remove the anti-tip wheel spacer nut (A) and flange head cap screw (B) that secure the anti-tip wheel (C) and lower frame cover (D) to the chair frame (Figure 11). Save all parts.

**Note** - The length of the anti-tip wheel spacer nut is shorter than all of the other spacer nuts on the chair. Do not misplace the nut during repair.

4. Repeat step 3 on the other side.

- Using a 5/32" hex wrench, remove the two button head cap screws (E) on the bottom of the go pedal. Save the screws. When you reinstall, use a 3/8" drive torque wrench to torque the screws to 70 ± 10 in-lb.

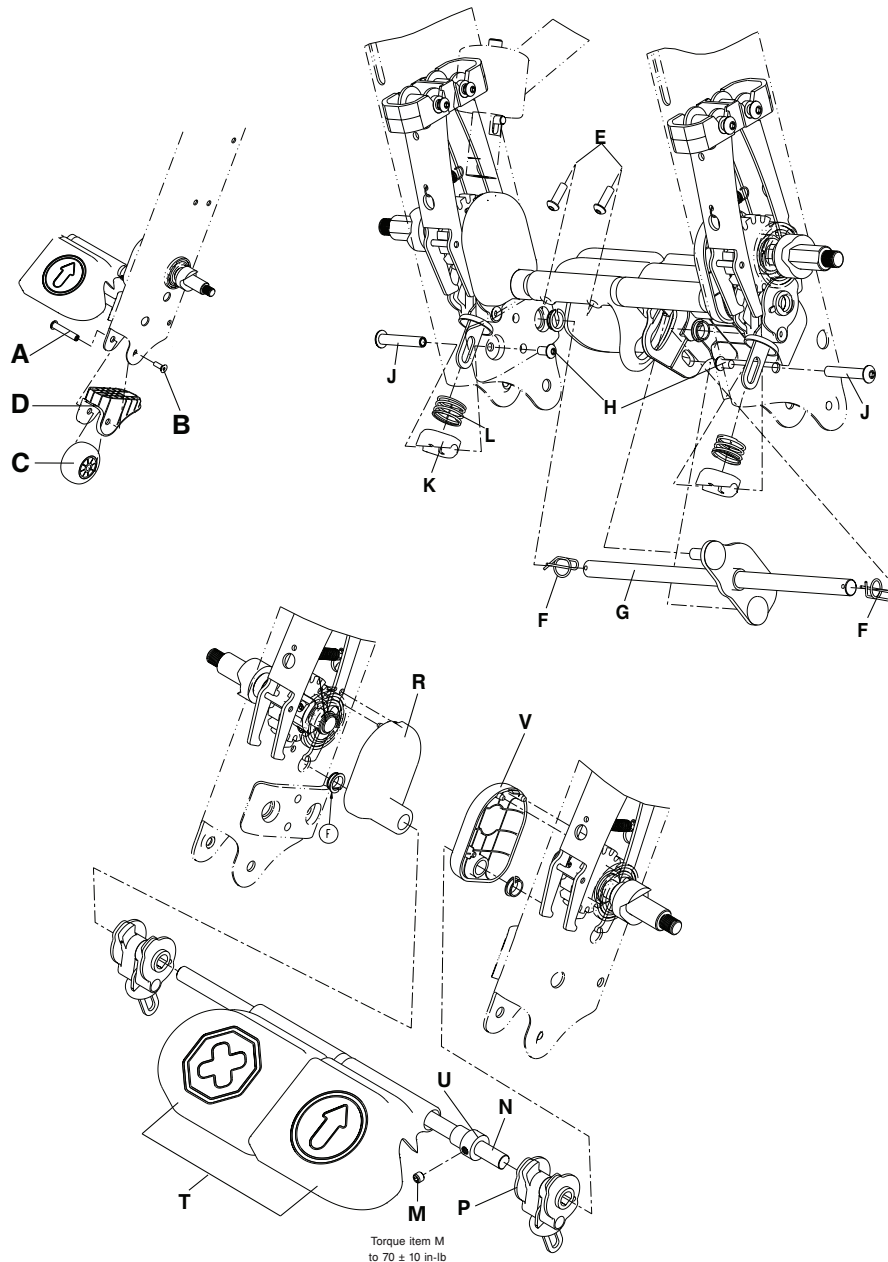


Figure 11 – Pedal replacement

- Using needle nose pliers, remove the rue ring cotter (F) on both ends of the toggle link rod (G). Save the rue ring cotters.
  - Remove the toggle link rod (G).
  - Using a 5/32" hex wrench and a 3/16" hex wrench, loosen the button head cap screw (H) that secures the brake cam spring pad (K) to the chair frame.
- Note** - Do not remove the brake finger spacer nut (J).
- Use your hand to push on the brake cam spring pad (K) to relieve pressure from the brake finger spacer nut (J). Remove and save the brake finger spacer nut and screw.
  - Remove the brake cam spring pad (K) and brake cam spring (L). Save the pad and spring.
  - Repeat steps 8-10 for the other side.

12. Using a 5/32" hex wrench, remove the collar set screw (M). Save the set screw. When you reinstall, use a 3/8" drive torque wrench to torque the set screw to 70 ± 10 in-lb.
13. Push the brake cross bar (N) toward the occupant left side until the bar no longer touches the occupant right side brake cam assembly (P). Remove the occupant right side brake cam assembly (P). Save the assembly.
14. Push the brake cross bar (N) toward the occupant right side and remove the brake cross bar (N). Save the bar.
  - a. As you remove the brake cross bar (N), remove the following parts in the order shown:
    - a. Left brake shaft cover (R)
    - b. Brake pedal assembly (T)
    - c. Collar (U)
    - d. Right brake shaft cover (V)
  - b. Discard the pedal that you are replacing. Save all remaining parts.
15. Reverse steps 2-14 to install the supplied pedal.

**Note** - Note the orientation of the brake cam assembly (P). Make sure that the tab faces the front of the chair.
16. Verify proper operation before you return the product to service.

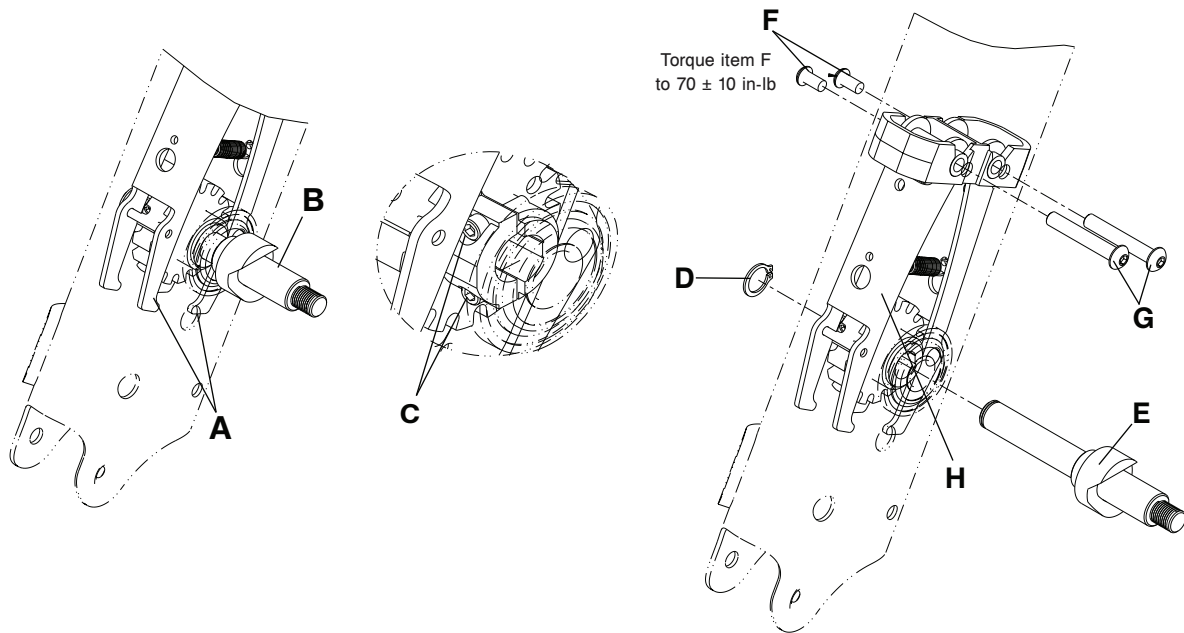
## Brake finger assembly replacement

### Tools required:

- 5/32" hex wrench
- 3/16" hex wrench
- 9/64" hex wrench
- Snap ring pliers
- 3/8" drive torque wrench (in-lb)

### Procedure:

1. Remove the brake/go pedal assembly. See *Pedal replacement* (page 14). Save all parts.
2. Using your hand, manually open the brake fingers (A). Using your other hand, manually rotate the rear wheel shaft assembly (B) so the socket head cap screws (C) face the bottom of the chair (Figure 12).
3. Using a 9/64" hex wrench, loosen the two socket head cap screws (C) on the rear wheel shaft assembly (B).



**Figure 12 – Brake finger assembly replacement**

4. Using snap ring pliers, remove the retaining ring (D) that secures the rear wheel shaft assembly (E) on the chair frame. Save the retaining ring.

**Note** - Do not open the retaining ring larger than necessary for removal.

5. Remove the rear wheel shaft assembly (E).
6. Using a 5/32" hex wrench and a 3/16" hex wrench, remove the screws (F) and brake finger spacer nuts (G) that secure the brake finger assembly (H). When you reinstall, use a 3/8" drive torque wrench to torque the screws to 70 ± 10 in-lb.
7. Remove and discard the brake finger assembly (H).
8. Reverse steps 2-7 to install the supplied brake finger assembly.
9. Replace the brake/go pedal assembly. See *Pedal replacement* (page 14).

**Note** - When you reinstall the brake cam assembly (P), make sure that the tab faces the front of the chair.

10. Verify proper operation before you return the product to service.

## IV pole components

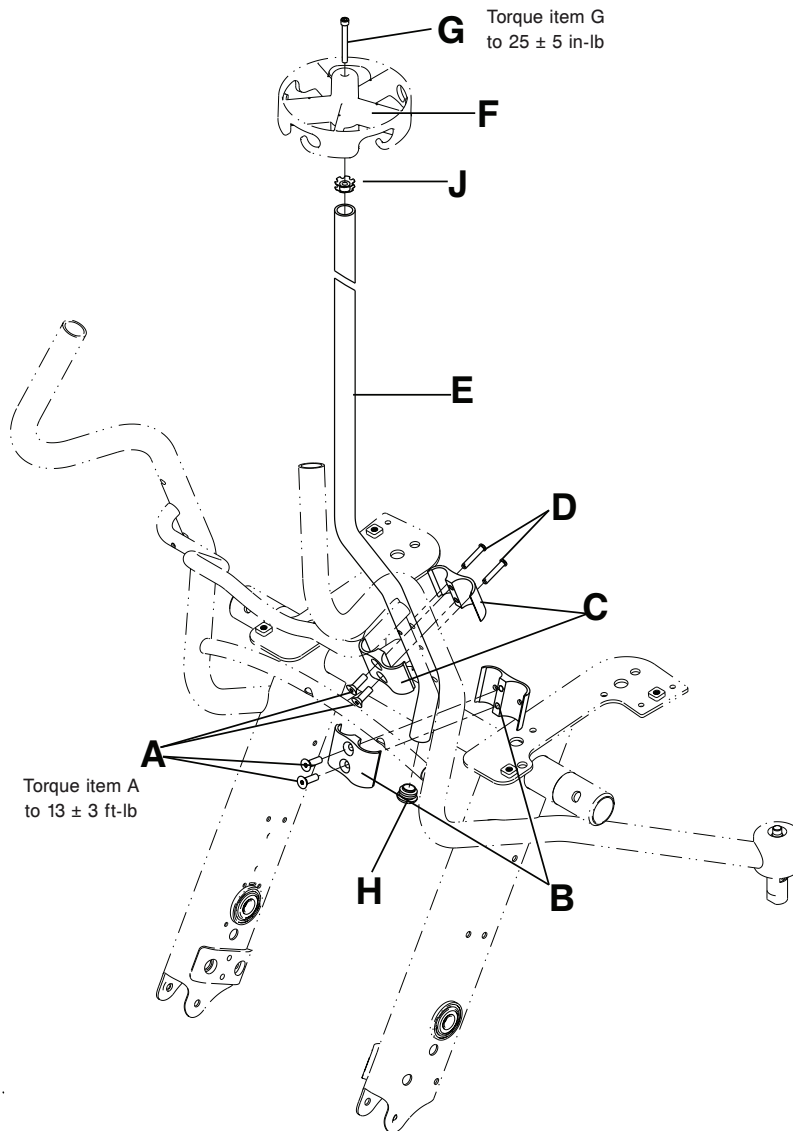


Figure 13 – IV pole components

## IV pole removal

### Tools required:

- 3/16" hex wrench
- Small slotted screwdriver

### Procedure:

1. Remove the seat back. See *Seat back replacement* (page 6).
2. Using a 3/16" hex wrench, remove the socket head cap screw (G) from the center of the IV pole topper (F) (*IV pole components* (page 18)). Save the screw.
3. Tap and push up on the IV pole topper (F) to remove. Save the IV pole topper.
4. Using a small slotted screwdriver, remove the tube plug (H) from the bottom of the IV pole (E). Save the tube plug.
5. Using a 3/16" hex wrench, remove the two flat head cap screws (A) to remove the lower IV pole clamps (B) from the chair frame. Save the screws and clamps.



- Using a 3/16" hex wrench, remove the two flat head cap screws (A) that secure the upper IV pole clamps (C) to the chair frame. Remove the clevis pins (D) and clamps (C). Save the screws, clevis pins, and clamps. Remove and discard the IV pole (E).

**Note** - Hold the IV pole assembly while you remove the flat head cap screws so the IV pole does not fall.

## IV pole installation

### Tools required:

- 3/16" hex wrench
- 3/8" drive torque wrench (ft-lb)
- 3/8" drive torque wrench (in-lb)

### Procedure:

**Note** - You need an umbrella nut (0018-045-000) to replace the IV pole.

- Remove the seat back. See *Seat back replacement* (page 6).
- Insert the supplied umbrella nut (0018-045-000) (J) into the top of the IV pole (E) (*IV pole components* (page 18)). Make sure the top of the umbrella nut is about 1/2" from the top of the IV pole.

**Note** - The umbrella nut may be installed before shipment. Make sure that the IV pole has the umbrella nut in place before you install the IV pole topper.

- Insert the supplied tube plug (0037-225-000) (H) into the bottom of the IV pole (E).
- Position the IV pole topper (F) on the IV pole (E) and use the palm of your hand to tap the topper until the topper is seated on the IV pole.
- Using a 3/16" hex wrench, install the supplied socket head cap screw (0004-672-000) (G) to secure the IV pole topper to the IV pole. Using a 3/8" drive torque wrench (in-lb), torque the screw to  $25 \pm 5$  in-lb.
- Using a 3/16" hex wrench, remove the two flat head cap screws (A) that secure the upper IV pole clamps (C) to the chair frame. Remove the clevis pins (D) and clamps (C). Save the screws, clevis pins, and clamps. Remove and discard the IV pole (E).
- Insert the supplied clevis pins (0026-349-000) (D) into the front of the supplied upper IV pole clamp (removed in step 6).
- Install the front of the upper IV pole clamp and clevis pins on the chair frame.
- Install the supplied IV pole into the front of the upper IV pole clamp and clevis pin.

**Note** - Hold the IV pole in position while you install the back of the upper IV pole clamp to keep the IV pole in place.

- Using a 3/16" hex wrench and the supplied flat head cap screws (0001-210-000) (A), install the back of the upper IV pole clamp onto the IV pole and front of the upper IV pole clamp. Using a 3/8" drive torque wrench (ft-lb), torque the screws to  $13 \pm 3$  ft-lb.
- Using a 3/16" hex wrench and the supplied flat head cap screws (0001-210-000) (A), install the supplied lower IV pole clamp front and back onto the IV pole. Using a 3/8" drive torque wrench (ft-lb), torque the screws to  $13 \pm 3$  ft-lb.

**Note** - Align the lower IV pole clamp so the clamp is flush with the bottom of the IV pole.

- Reinstall the seat back. See *Seat back replacement* (page 6).
- Verify proper operation before you return the product to service.

## IV pole topper replacement

### Tools required:

- 3/16" hex wrench
- 3/8" drive torque wrench (in-lb)

### Procedure:

1. Using a 3/16" hex wrench, remove the socket head cap screw (A) from the center of the IV pole topper (B) (Figure 14). Save the screw.

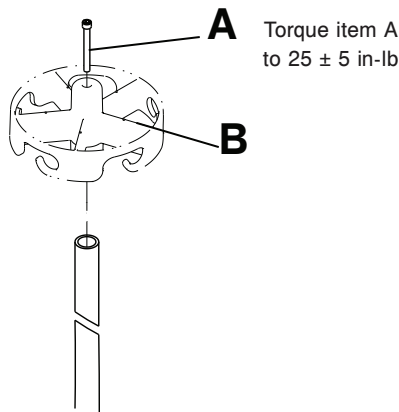


Figure 14 – IV pole topper replacement

2. Tap and push up on the IV pole topper to remove. Discard the IV pole topper.
3. Position the IV pole topper on the IV pole and use the palm of your hand to tap the topper until the topper is seated on the IV pole.
4. Using a 3/16" hex wrench, install the socket head cap screw (A) (removed in step 1) to secure the IV pole topper to the IV pole. Using a 3/8" drive torque wrench, torque the screw to 25 ± 5 in-lb.
5. Verify proper operation before you return the product to service.

## Lap belt assembly installation

**Note** - This assembly is available for all products manufactured after August 2013. See *Serial number location* in your product's Operations Manual.

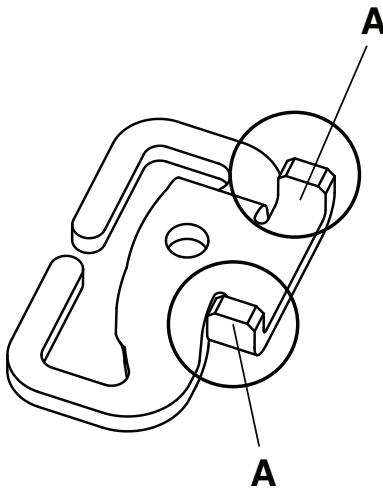
### Tools required:

- 3/16" hex bit
- 3/8" drive torque wrench (in-lb)

### Procedure:

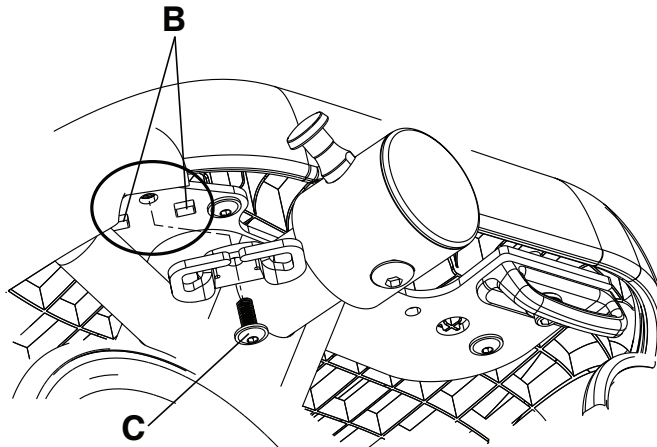
**Note** - The long strap is attached to the right side of the chair. The short strap is attached to the left side of the chair.

1. Apply the brake. Push on the product to make sure that the brake works.
2. Attach the long strap to the right side of the chair. Attach the short strap to the left side of the chair.
3. Fit the two tabs (A) on the bracket into the square holes on the main frame weldment (B) (Figure 15 and Figure 16).



**Figure 15 – Lap belt bracket tabs**

4. Install the supplied socket head cap screw (0004-671-000) (C) into the round hole on the bracket to secure the lap belt bracket to the main frame weldment (B). Using a 3/8" drive torque wrench and a 3/16" hex bit, torque the screw to  $70 \pm 10$  in-lb.



**Figure 16 – Lap belt bracket installation**

5. Verify proper operation before you return the product to service.

## Lap belt removal

### Tools required:

- None

### Procedure:

1. Using one hand, grasp the end of the belt attached to the bracket (A) (Figure 17). Using the other hand, grasp the bracket (B).
2. Squeeze the belt loop at the bracket and slide it through the slot (C) on the bracket to remove the belt. Discard the belt.

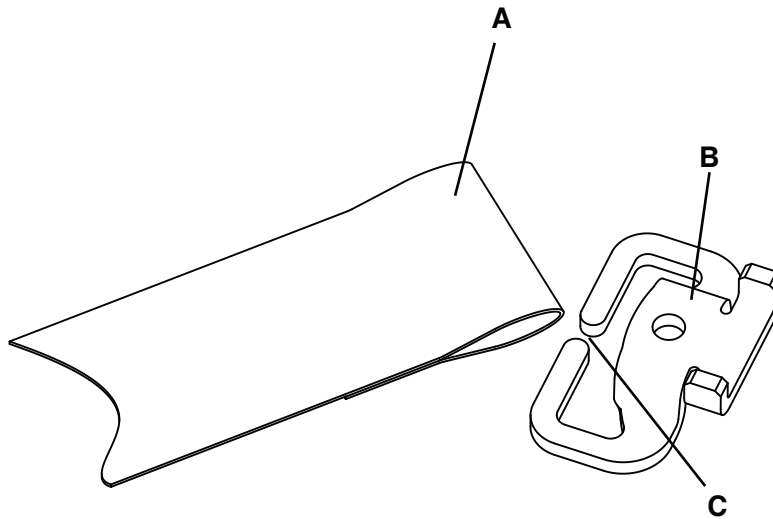


Figure 17 – Lap belt removal

## Lap belt installation

### Tools required:

- None

### Procedure:

1. Apply the brake. Push on the product to make sure that the brake works.
2. Using one hand, grasp the looped end of the supplied belt and with the other hand, grasp the bracket.
3. Squeeze the looped end of the belt and slide the belt through the slot in the bracket.
4. Verify proper operation before you return the product to service.

## Leg rest components

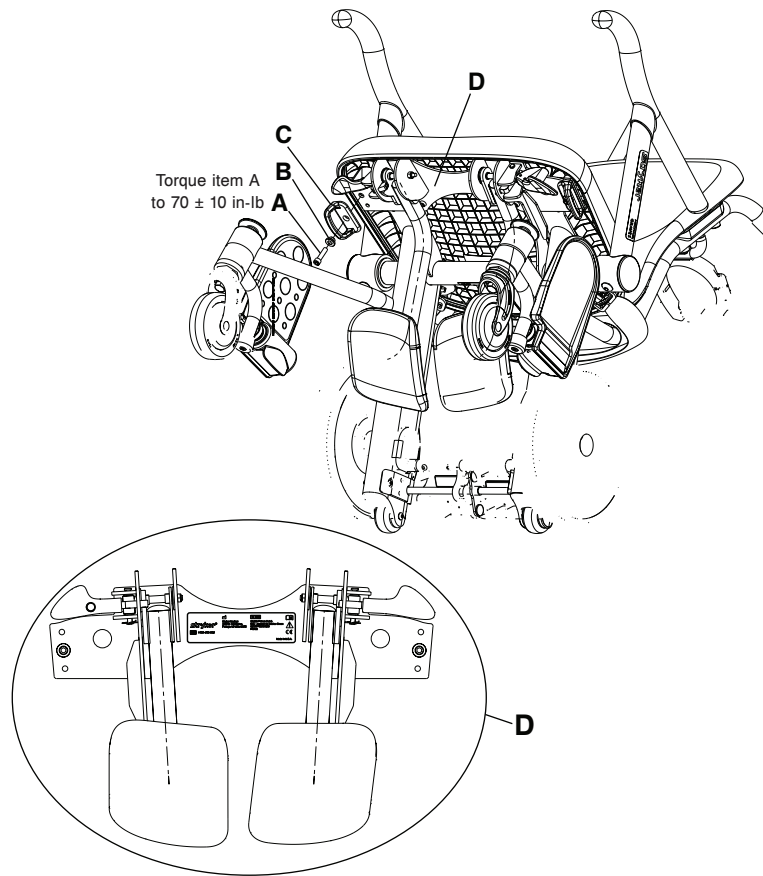


Figure 18 – Leg rest weldment

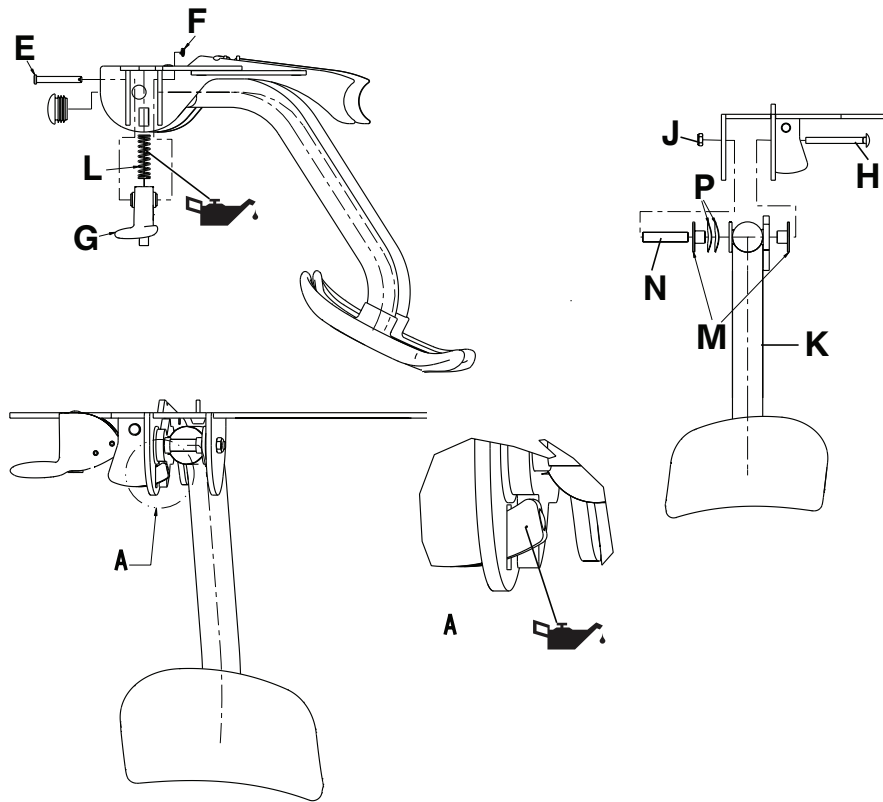


Figure 19 – Leg rest components

## Leg rest installation

### Tools required:

- 1/4" hex wrench
- 3/16" hex wrench
- 3/8" drive torque wrench (in-lb)

### Procedure:

1. Apply the brake. Push on the product to make sure that the brake works.
2. Position the chair on its back.
3. If the product is equipped with the foley bag hook, use a 3/16" hex wrench to remove the flange button head cap screws (A) that secure the foley bag hook on both sides of the chair frame. Discard the foley bag hooks (C) and screws (A) (*Leg rest components* (page 23)).
4. Position the supplied leg rest mounting plate weldment (1460-166-005) (D) on the bottom of the chair frame.
5. Align the positioning tabs on the bottom of the supplied foley bag hooks (1460-001-051) (C) with the pilot holes on the leg rest mounting plate weldment.
6. Insert the supplied foley hook spacer (1460-116-025) (B) into the hole on the foley bag hook.
7. Using a 1/4" hex wrench and the supplied socket head cap screws (0004-575-000) (A), secure the foley bag hook and the leg rest mounting plate weldment to the bottom of the chair frame on both sides. Using a 3/8" drive torque wrench, torque the screws to  $70 \pm 10$  in-lb.
8. Verify proper operation before you return the product to service.

## Leg rest leg replacement

### Tools required:

- 1/4" hex wrench
- Needle nose pliers
- 7/16" open end wrench
- 3/8" drive torque wrench (in-lb)
- Syntech grease

### Procedure:

1. Apply the brake. Push on the product to make sure that the brake works.
2. Put the leg rest in the stowed position.
3. Position the chair on its back.
4. Using a 1/4" hex wrench, remove the socket head cap screws (A) that secure the foley bag hook and the leg rest mounting plate weldment to both sides of the chair frame. Remove the leg rest mounting plate weldment (D), the foley hook spacer (B), and the foley bag hook (C) (*Leg rest components* (page 23)). Save the leg rest mounting plate weldment, screws, spacers, and foley bag hooks.

**Note** - When you reinstall, use a 3/8" drive torque wrench to torque the screws to  $70 \pm 10$  in-lb.

5. Place the leg rest mounting plate weldment on a workbench.
6. Using needle nose pliers, remove the rue ring cotter (F) and the clevis pin (E) that secure the leg rest latch assemblies (G) to both sides of the leg rest mounting plate weldment (D). Remove the leg rest latch assemblies (G) and compression springs (L) on both sides of the leg rest mounting plate weldment (D). Save the leg rest latch assemblies, springs, rue ring cotters, and clevis pins.

**Note** - When you reinstall, use Syn-tech grease to lubricate the compression springs (L) and the latch tip, if necessary.

7. Using a 7/16" open end wrench, remove the nylock hex nut (J) and the bolt (H) that secure the leg rest assembly (K) to the leg rest mounting plate weldment.
8. Remove the two washers (P), two bushings (M), and the leg rest pivot spacer (N) as you remove the leg rest assembly. Save all parts.

**Note** - When you reinstall, install the washers (P) on the bushing (M) before you replace them on the leg rest assembly

9. Reverse steps 1-8 to reinstall.
10. Verify proper operation before you return the product to service.

## Leg rest adjustment

If the leg rest pivots too fast, tighten the nylock hex nut. If the leg rest does not pivot, loosen the nylock hex nut.

### Tools required:

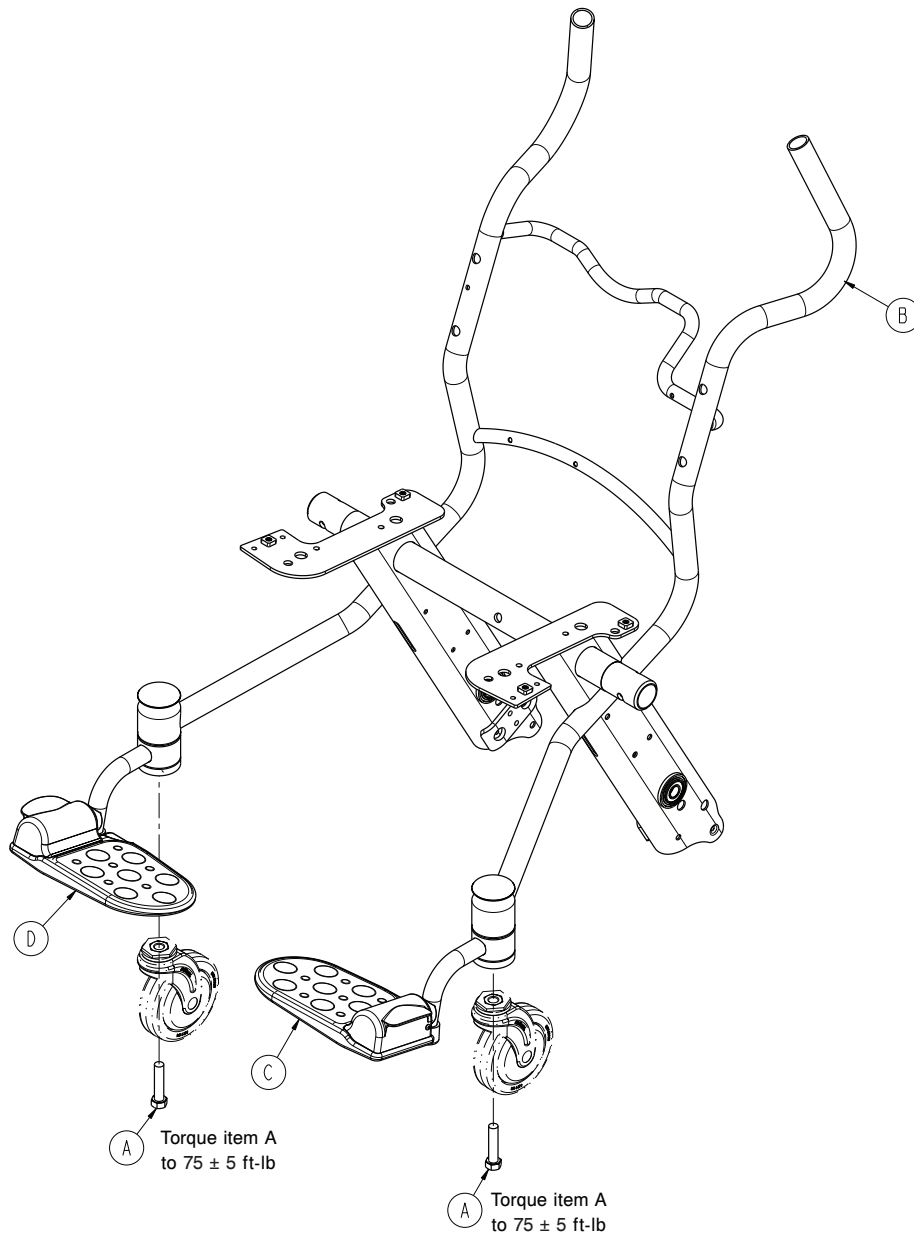
- 7/16" combination wrench

### Procedure:

1. Apply the brake. Push on the product to make sure that the brake works.
2. Using a 7/16" combination wrench, tighten or loosen the nylock hex nut (J) in quarter turn increments (*Leg rest components* (page 23)).
3. Verify proper operation before you return the product to service.

# Swing-away frame and footrest assembly

1460-001-000 Rev A (Reference only)

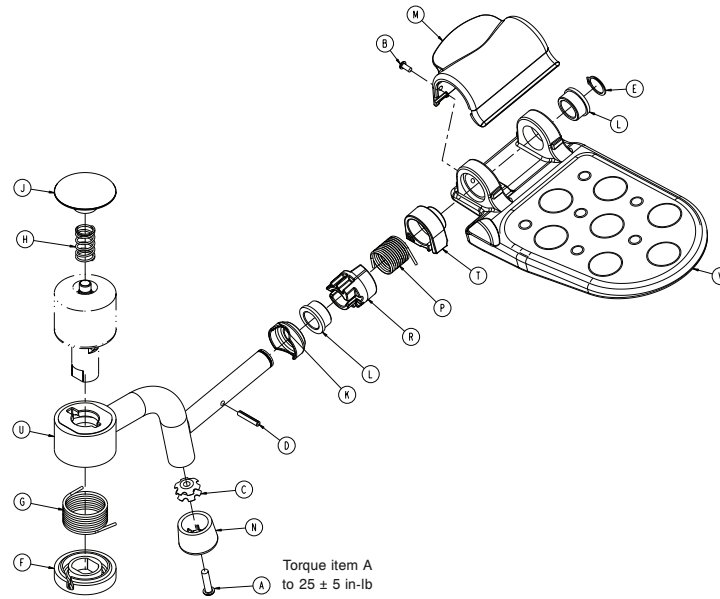


Item	Number	Name	Quantity
A	0003-333-000	Hex head cap screw	2
B	1460-001-010	Frame weldment, swing-away	1
C	1460-015-050	Swing-away footrest assembly, left (page 27)	1
D	1460-015-070	Swing-away footrest assembly, right (page 28)	1



# Swing-away footrest assembly, left

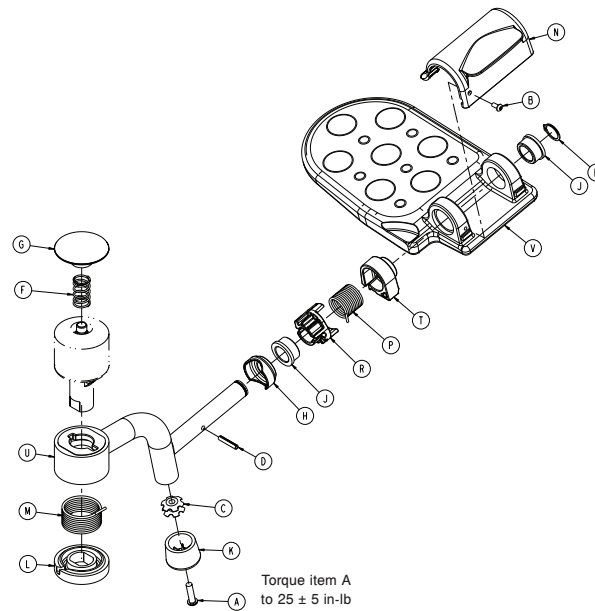
1460-015-050 Rev B (Reference only)



Item	Number	Name	Quantity
A	0004-334-000	Button head cap screw	1
B	0004-505-000	Button head cap screw	1
C	0018-045-000	Tube connector	1
D	0026-011-000	Slotted spring pin	1
E	0028-166-000	External retaining ring	1
F	1460-015-012	Spring holder, swing-away, left	1
G	1460-015-013	Torsion spring, swing-away, left	1
H	1460-015-016	Push shaft spring, swing-away	1
J	1460-015-017	Footrest push cap, swing-away	1
K	1460-015-018	Footrest spacer bushing	1
L	1460-015-019	Footrest pan bushing	2
M	1460-015-023	Footrest pan pivot cover, left	1
N	1460-015-024	Footrest end cap	1
P	1460-015-027	Footrest pan torsion spring, left	1
R	1460-015-028	Footrest slotted spring holder, left	1
T	1460-015-029	Footrest fixed spring housing, left	1
U	1460-015-055	Weldment, swing-away, left	1
V	1460-015-120	Footrest pan insert assembly, left	1

# Swing-away footrest assembly, right

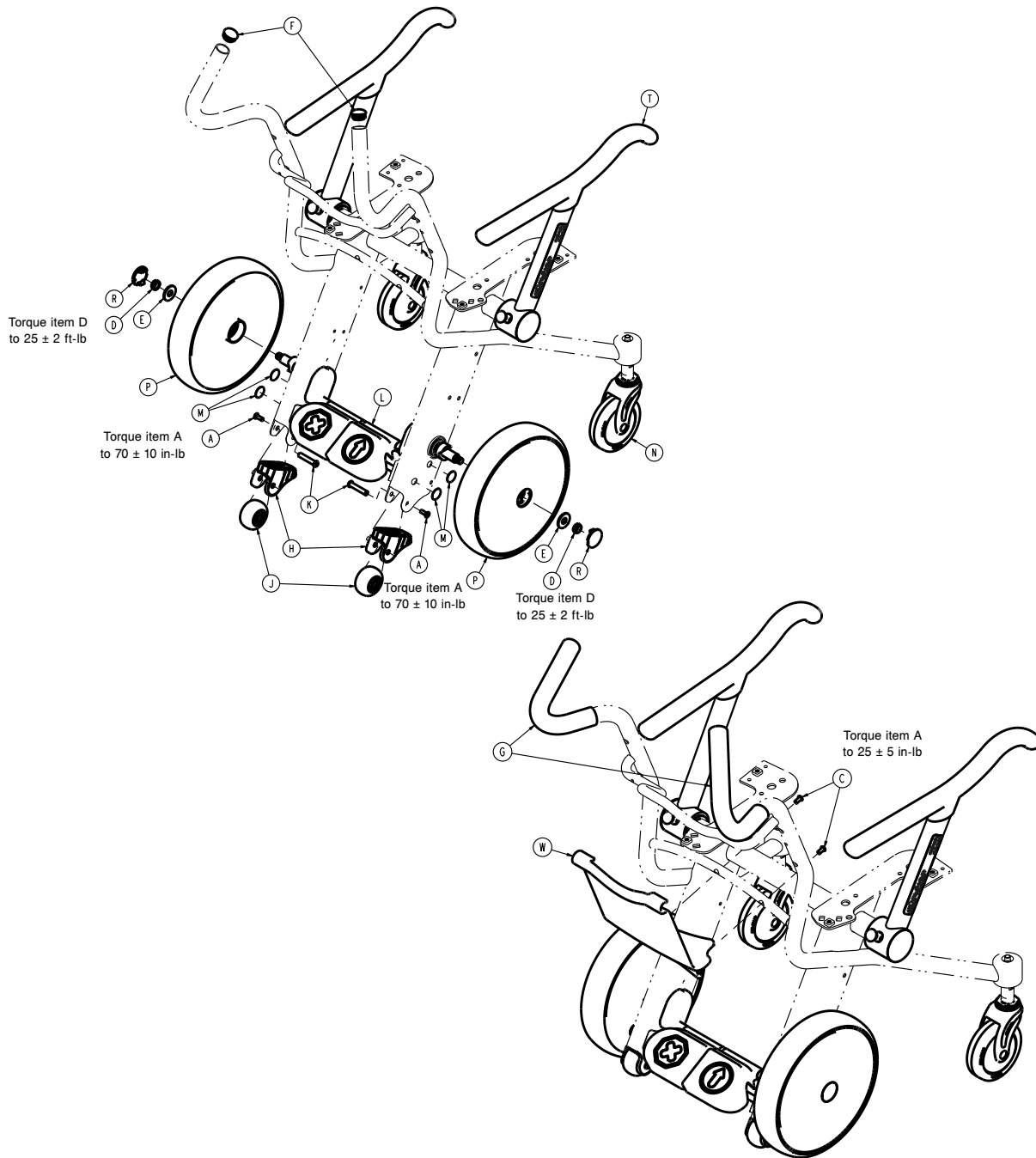
1460-015-070 Rev B (Reference only)

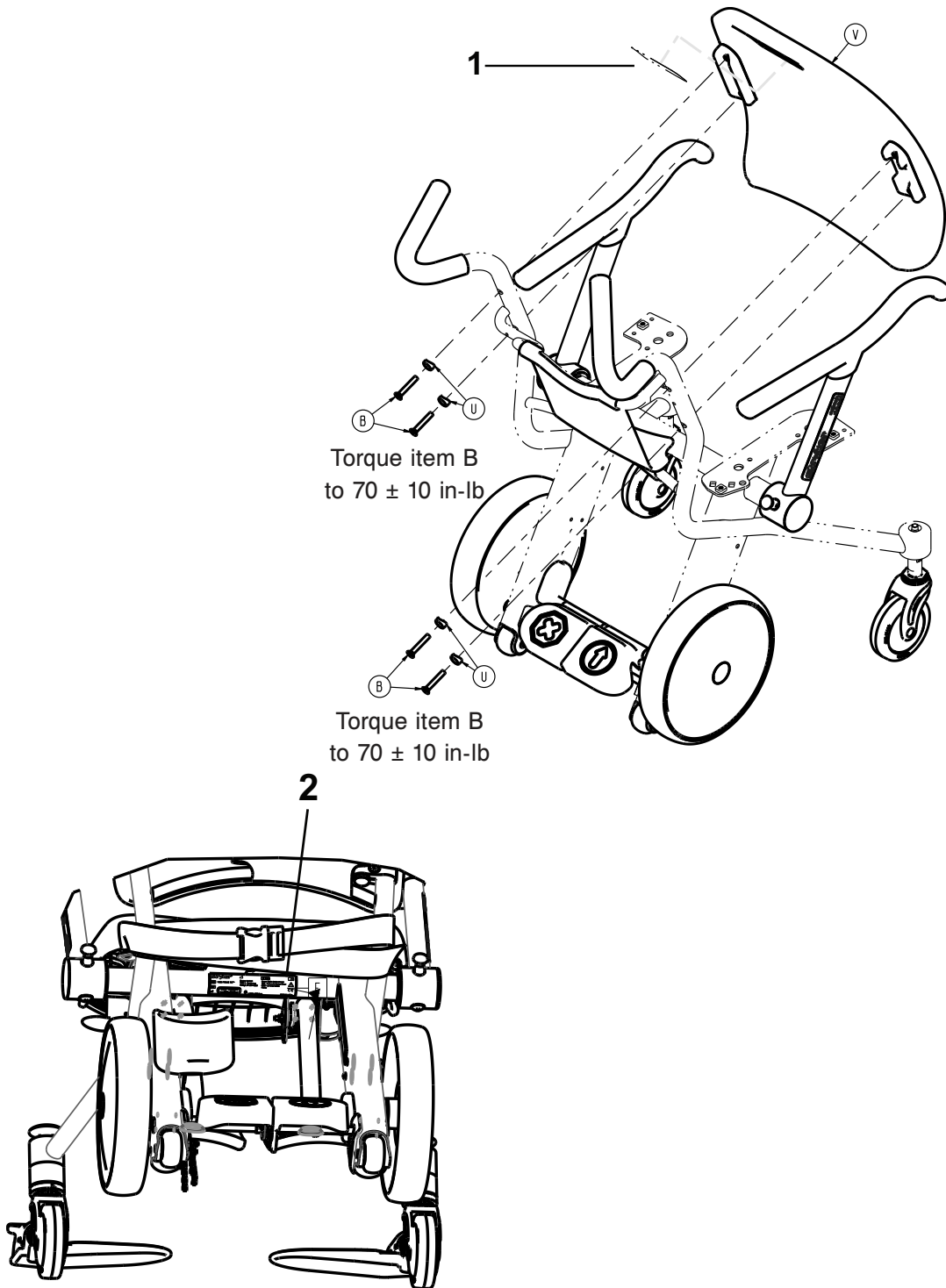


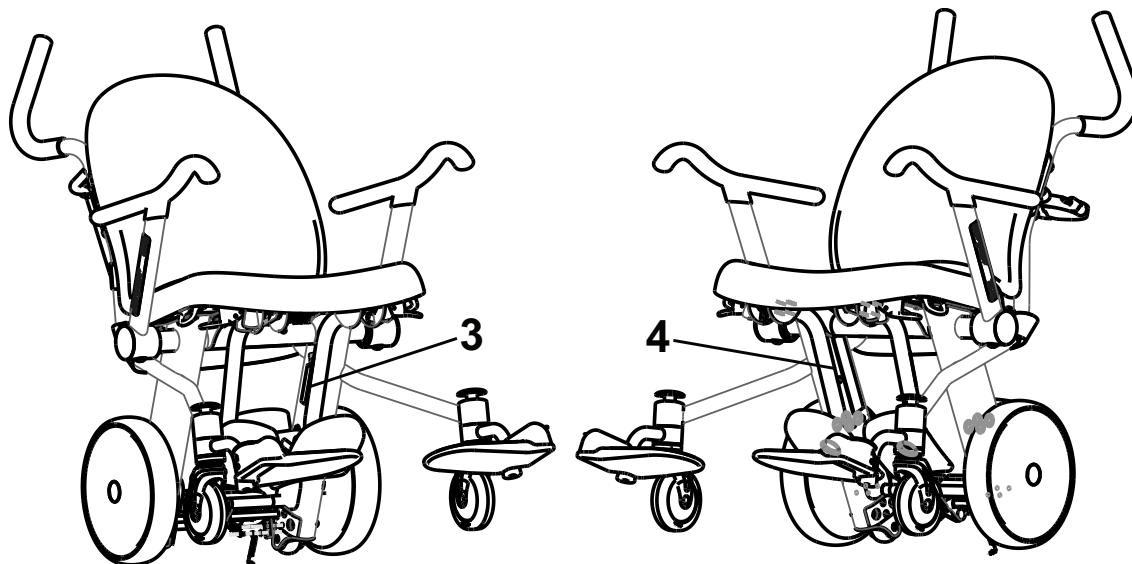
Item	Number	Name	Quantity
A	0004-334-000	Button head cap screw	1
B	0004-505-000	Button head cap screw	1
C	0018-045-000	Tube connector	1
D	0026-011-000	Slotted spring pin	1
E	0028-166-000	External retaining ring	1
F	1460-015-016	Push shaft spring, swing-away	1
G	1460-015-017	Footrest push cap, swing-away	1
H	1460-015-018	Footrest spacer bushing	1
J	1460-015-019	Footrest pan bushing	2
K	1460-015-024	Footrest end cap	1
L	1460-015-032	Footrest spring holder, swing-away, right	1
M	1460-015-033	Footrest torsion spring, swing-away, right	1
N	1460-015-043	Footrest pan pivot cover, right	1
P	1460-015-047	Footrest pan torsion spring, right	1
R	1460-015-048	Footrest slotted spring holder, right	1
T	1460-015-049	Footrest fixed spring housing, right	1
U	1460-015-075	Footrest weldment, swing-away, right	1
V	1460-015-140	Footrest pan insert assembly, right	1

# Common components

1460-016-010 Rev AA (Reference only)





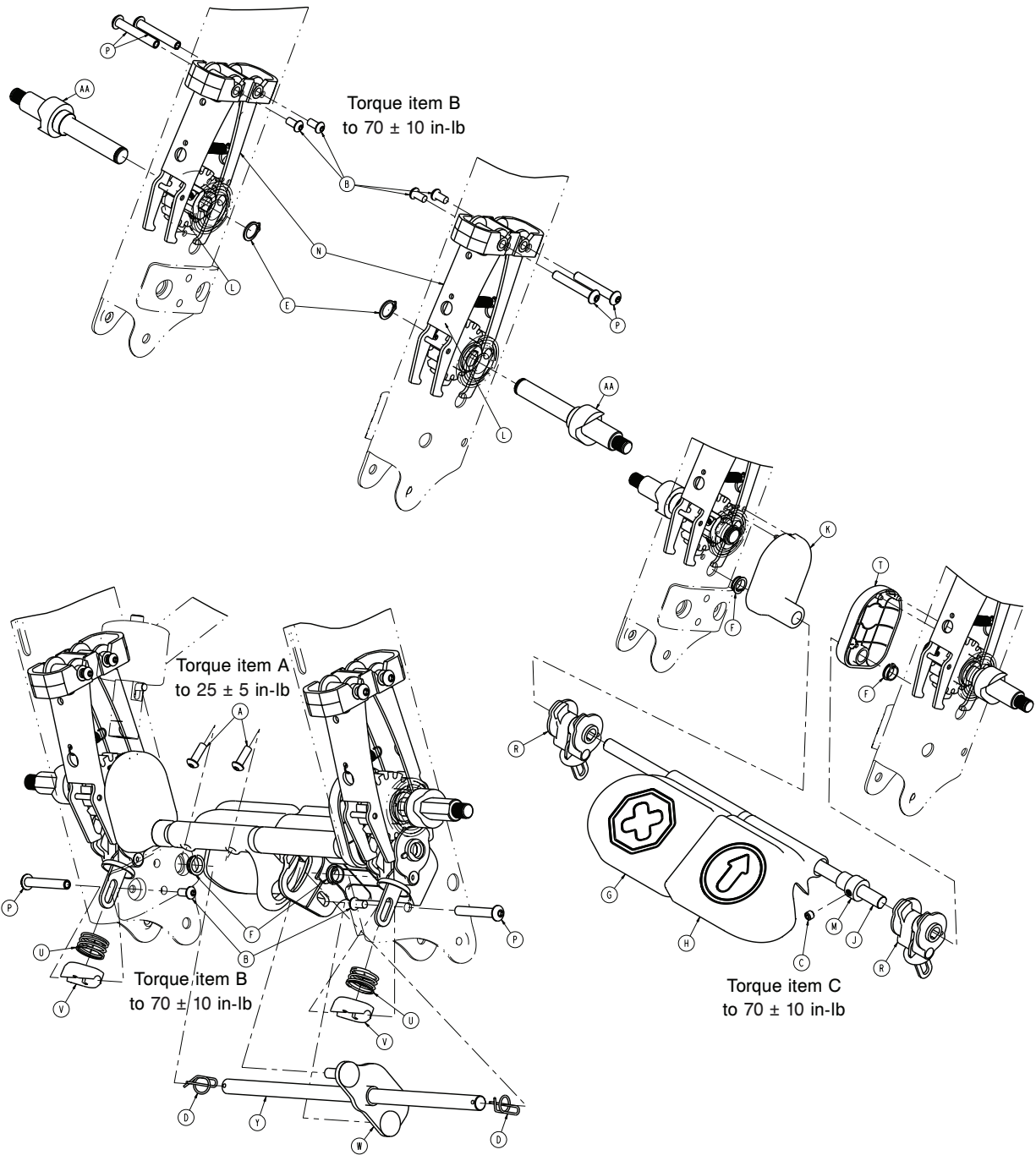


1	Label, plaque
2	Label, specification
3	Label, EAR
4	Label, translation

Item	Number	Name	Quantity
A	0001-001-000	Flange head cap screw	2
B	0001-211-000	Flange head cap screw	4
C	0004-574-000	Button head cap screw	2
D	0016-049-000	Nylock hex nut	2
E	1040-020-083	Washer	2
F	1460-001-006	Frame caster tube plug	2
G	1460-001-007	Frame handle cover	2
H	1460-001-041	Frame upright cap	2
J	1460-001-042	Anti-tip wheel	2
K	1460-003-043	Anti-tip wheel spacer nut	2
L	1460-003-000	Brake assembly (page 32)	1
M	1460-003-007	Label, brake/toggle hole cover	4
N	1460-003-080	Swivel caster assembly (page 36)	2
P	1460-006-010	Rear wheel assembly	2
R	1460-006-014	Rear wheel outer cap	2
T	1460-011-000	Armrest assembly (page 37)	1
U	1460-013-033	Seat back screw adapter	4
V	1460-013-040	Seat back/bolster assembly	1
W	1460-050-005	Chart holder	1

# Brake assembly

1460-003-000 Rev B (Reference only)

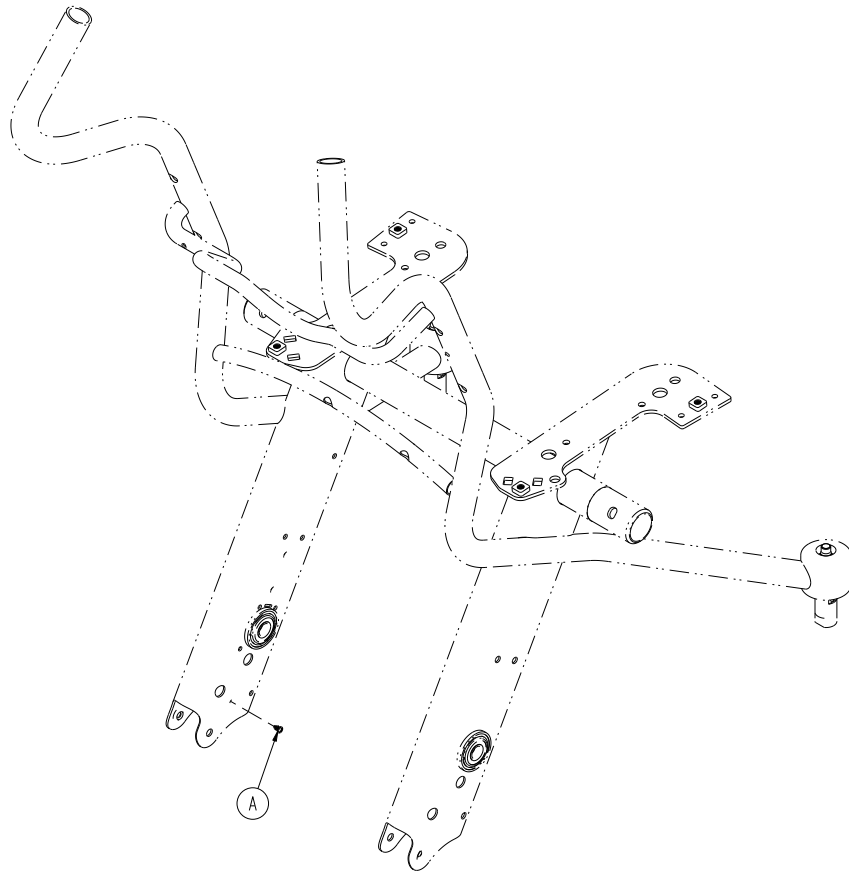


Item	Number	Name	Quantity
A	0004-593-000	Button head cap screw	2
B	0004-574-000	Button head cap screw	6
C	0021-197-000	Set screw	1
D	0027-034-000	Rue ring cotter	2
E	0028-072-000	External retaining ring	2
F	0052-123-000	Snap-in nyliner	4
G	1460-003-020	Brake pedal assembly	1

Item	Number	Name	Quantity
H	1460-003-022	Go pedal	1
J	1460-003-023	Brake cross bar	1
K	1460-003-024	Brake shaft cover, left	1
L	1460-003-025	Brake disc assembly	2
M	1460-003-029	Brake cross bar collar	1
N	1460-003-030	Brake finger holder assembly	2
P	1460-003-036	Brake finger spacer nut	6
R	1460-003-040	Brake cam assembly	2
T	1460-003-044	Brake shaft cover, right	1
U	1460-003-048	Brake cam spring	2
V	1460-003-049	Brake cam spring pad	2
W	1460-003-050	Toggle link assembly	1
Y	1460-003-057	Toggle link rod	1
AA	1460-003-065	Rear wheel shaft assembly	2

# No ground chain option

1460-075-100 Rev A (Reference only)

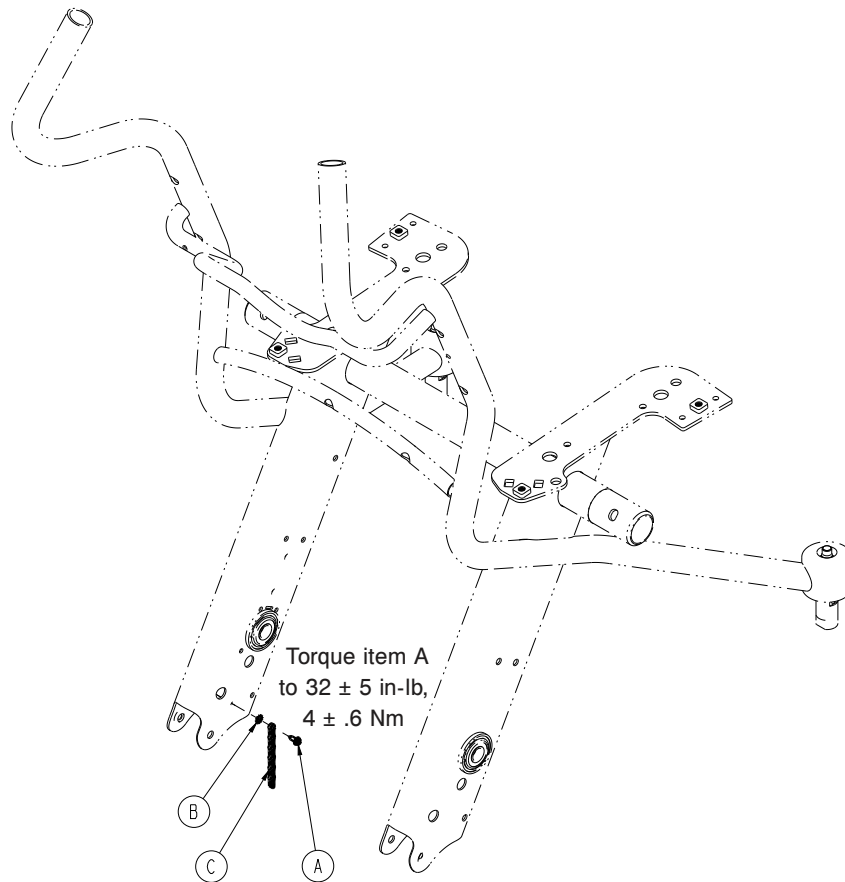


Item	Number	Name	Quantity
A	0029-030-000	Nylon key hole clip	1



# Ground chain option

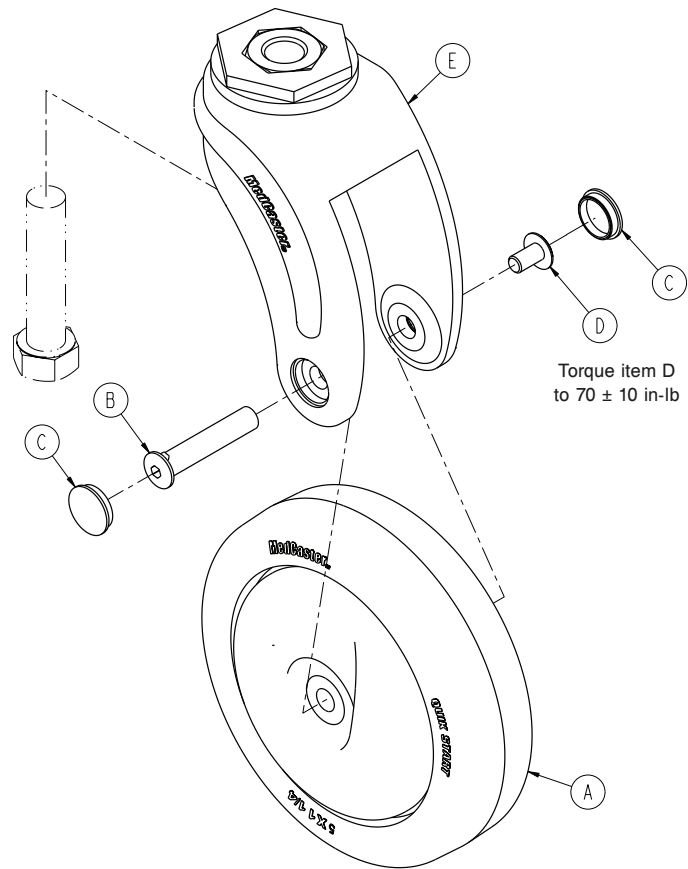
1460-075-000 Rev A (Reference only)



Item	Number	Name	Quantity
A	0003-364-000	Hex washer head truss screw	1
B	0013-018-000	External tooth lock washer	1
C	1460-001-052	Grounding chain	1

# Swivel caster assembly

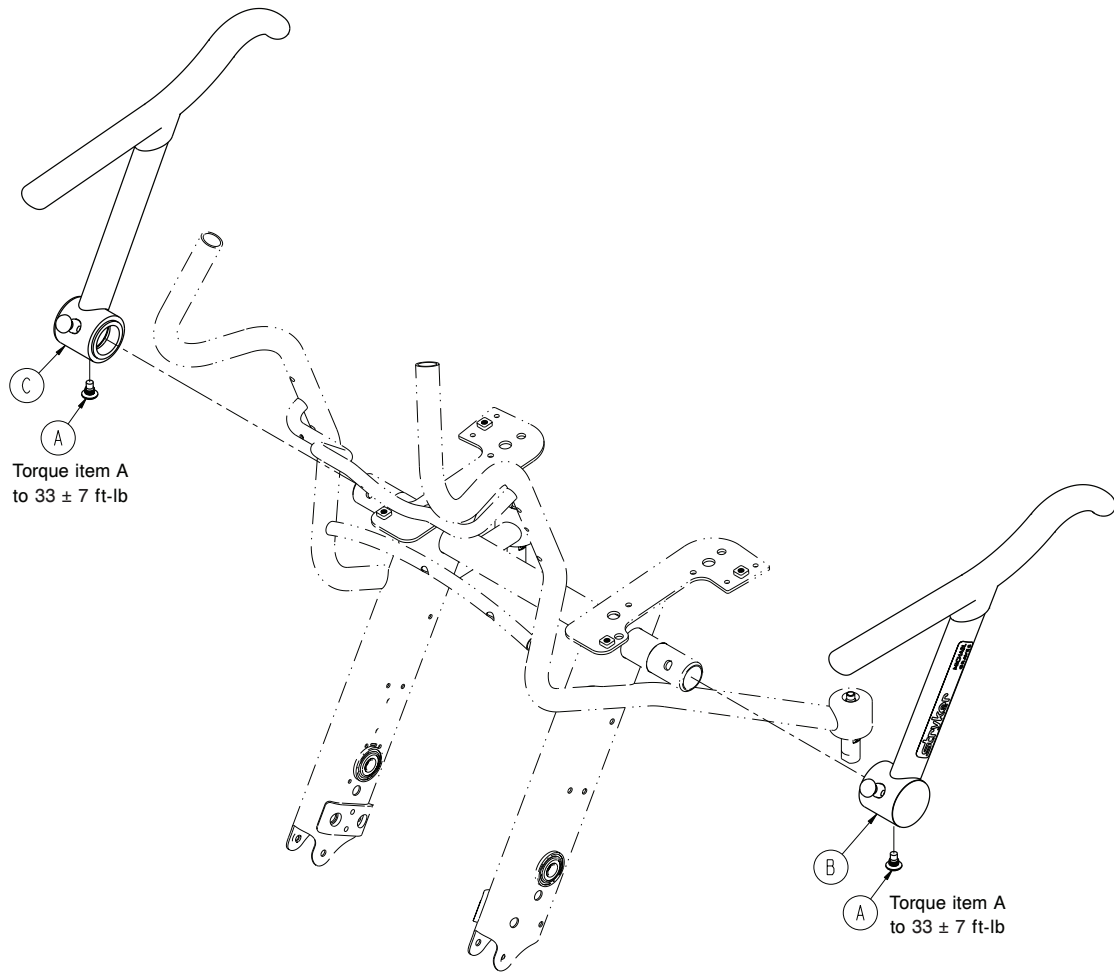
1460-003-080 Rev B (Reference only)



Item	Number	Name	Quantity
A	1460-003-085	Wheel assembly	1
B	1460-003-086	Axle barrel nut	1
C	1460-003-087	Axle cap	2
D	1460-003-088	Axle screw	1
E	1460-003-089	Caster horn assembly	1

# Armrest assembly

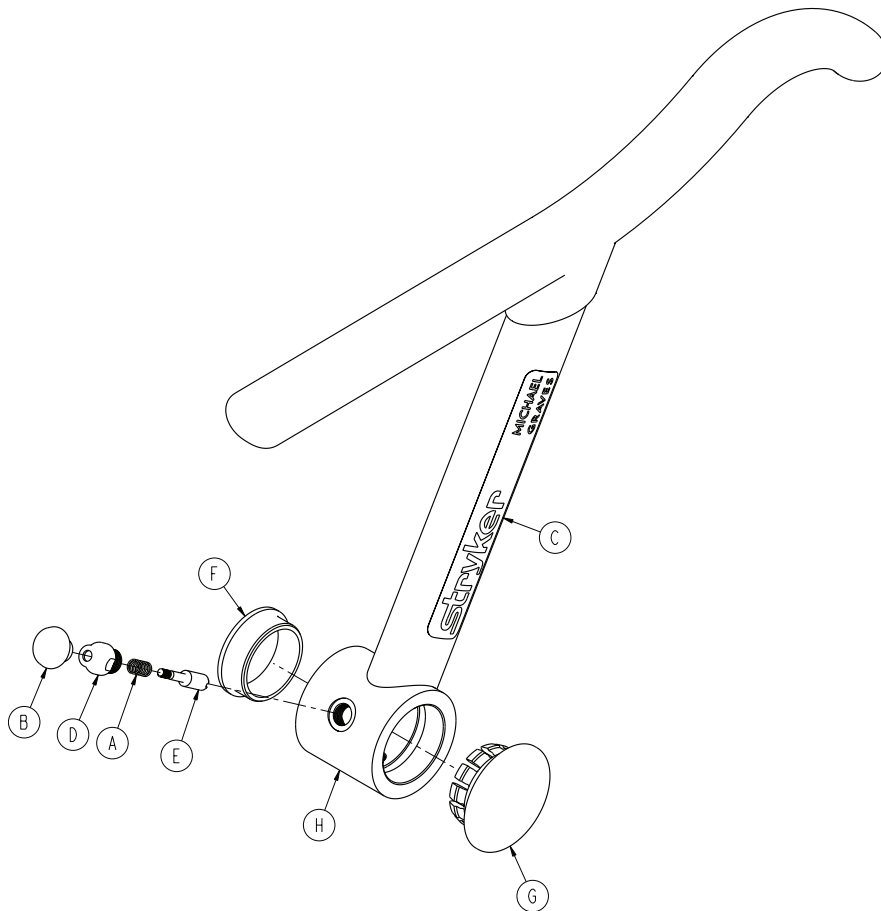
1460-011-000 Rev A (Reference only)



Item	Number	Name	Quantity
A	1460-011-008	Armrest hard stop pin	2
B	1460-011-010	Armrest assembly, right (page 38)	1
C	1460-011-020	Armrest assembly, left (page 39)	1

# Armrest assembly, right

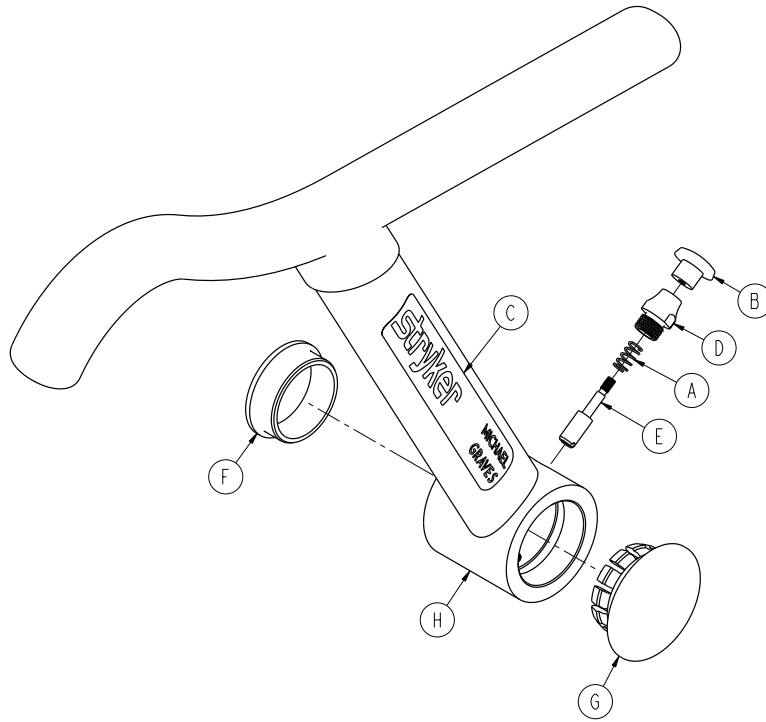
1460-011-010 Rev A (Reference only)



Item	Number	Name	Quantity
A	0038-133-000	Compression wire	1
B	0785-045-450	Knob	1
C	1460-001-003	Label, Stryker manufacturing	1
D	1460-011-006	Armrest lock pin sleeve	1
E	1460-011-007	Armrest pin lock	1
F	1460-011-009	Armrest pivot flange bearing	1
G	1460-011-012	Armrest pivot cap	1
H	1460-011-015	Armrest weldment, right	1

# Armrest assembly, left

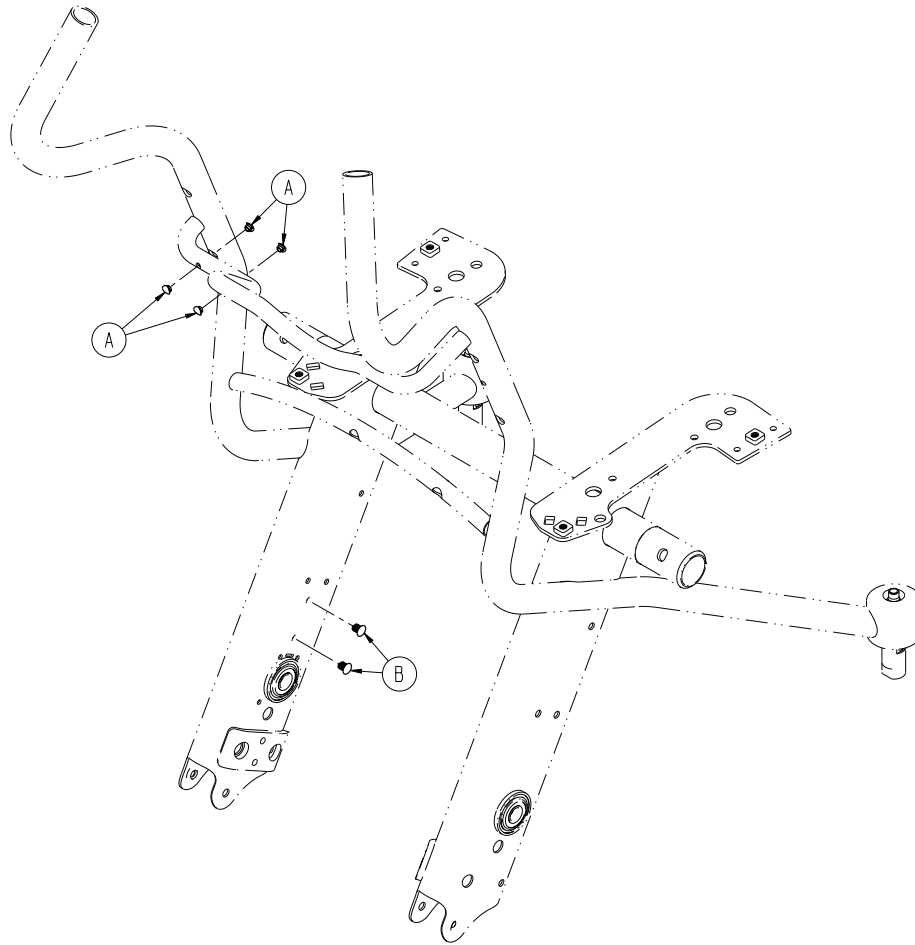
1460-011-020 Rev A (Reference only)



Item	Number	Name	Quantity
A	0038-133-000	Compression wire	1
B	0785-045-450	Knob	1
C	1460-001-003	Label, Stryker manufacturing	1
D	1460-011-006	Armrest lock pin sleeve	1
E	1460-011-007	Armrest pin lock	1
F	1460-011-009	Armrest pivot flange bearing	1
G	1460-011-012	Armrest pivot cap	1
H	1460-011-125	Armrest weldment, left	1

# No oxygen bottle holder

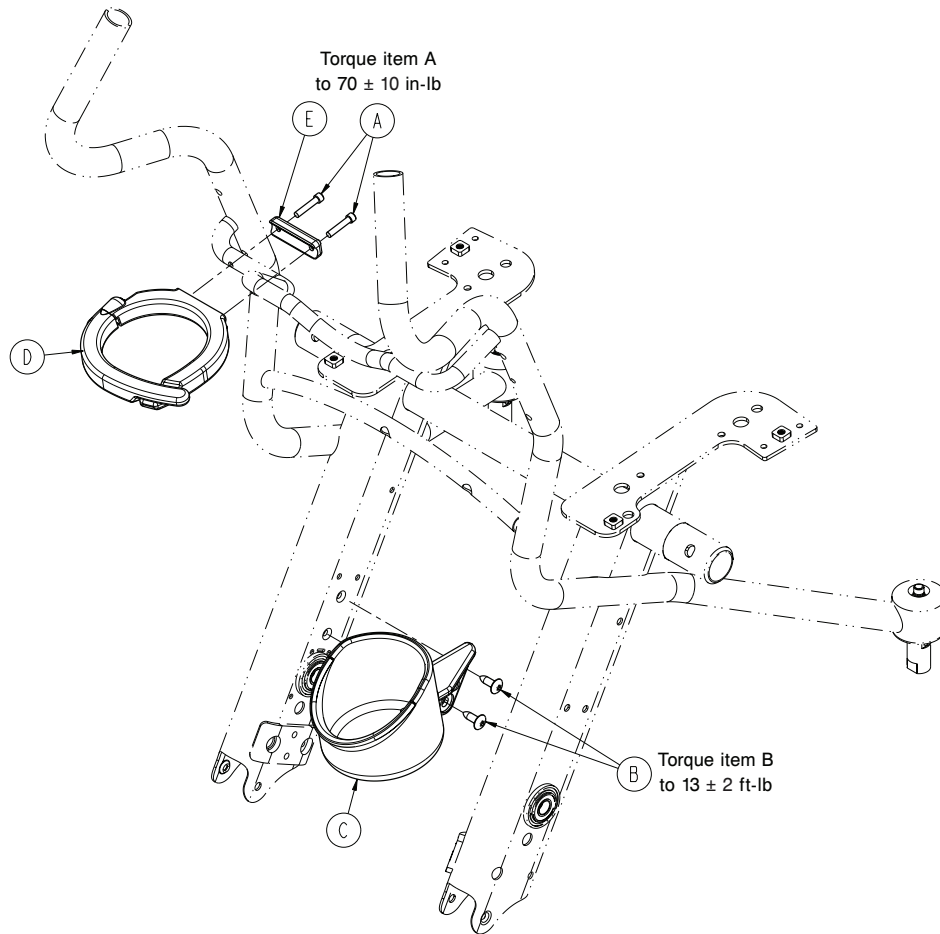
1460-045-100 Rev A (Reference only)



Item	Number	Name	Quantity
A	1460-045-007	Oxygen bottle holder hole plug	4
B	1460-066-013	Leg rest push-in clip	2

# Oxygen bottle holder

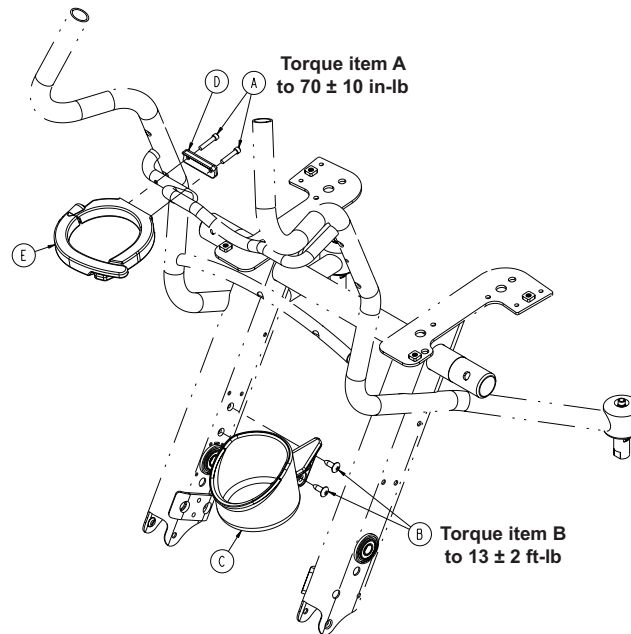
1460-045-000 Rev A (Reference only)



Item	Number	Name	Quantity
A	0004-662-000	Socket head cap screw	2
B	0007-074-000	Truss head machine screw	2
C	1460-045-010	Oxygen bottle holder, bottom	1
D	1460-045-020	Oxygen holder top assembly	1
E	1460-045-023	Oxygen holder top mount	1

# Oxygen bottle holder

1460-145-000 Rev A (Reference only)

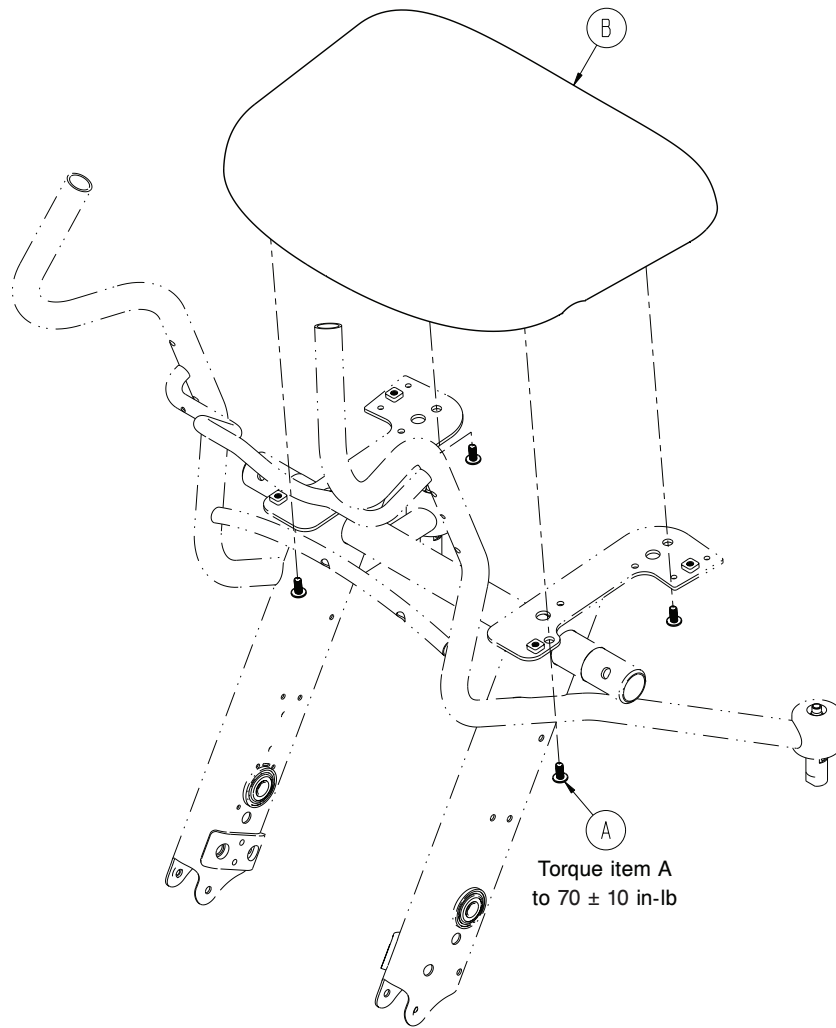


Item	Number	Name	Quantity
A	0004-662-000	Socket head cap screw	2
B	0007-074-000	Truss head machine screw	2
C	1460-045-010	Oxygen bottle holder, bottom	1
D	1460-045-023	Oxygen holder top mount	1
E	1460-045-120	Oxygen holder top assembly	1



# Non-padded seat

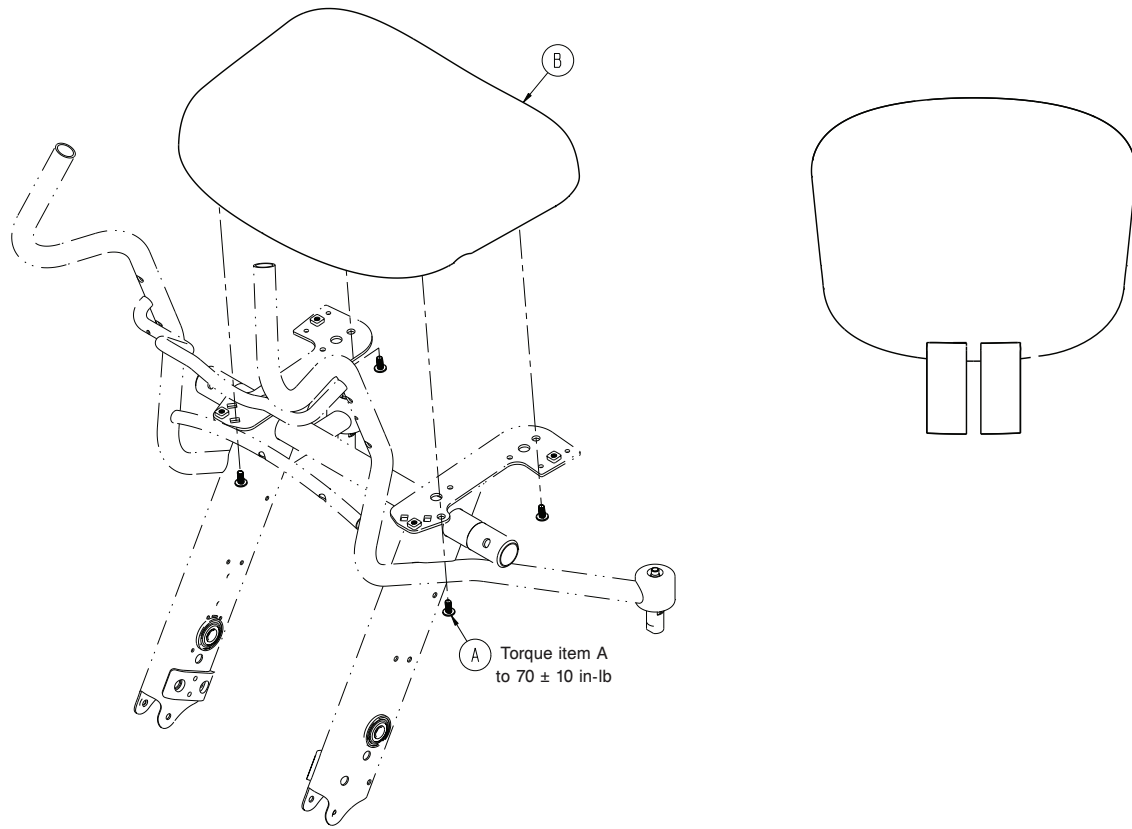
1460-013-000 Rev B (Reference only)



Item	Number	Name	Quantity
A	0004-671-000	Flange button head cap screw	4
B	1460-113-020	Seat pan, non-padded	1

# Padded seat option - 1460-013-050

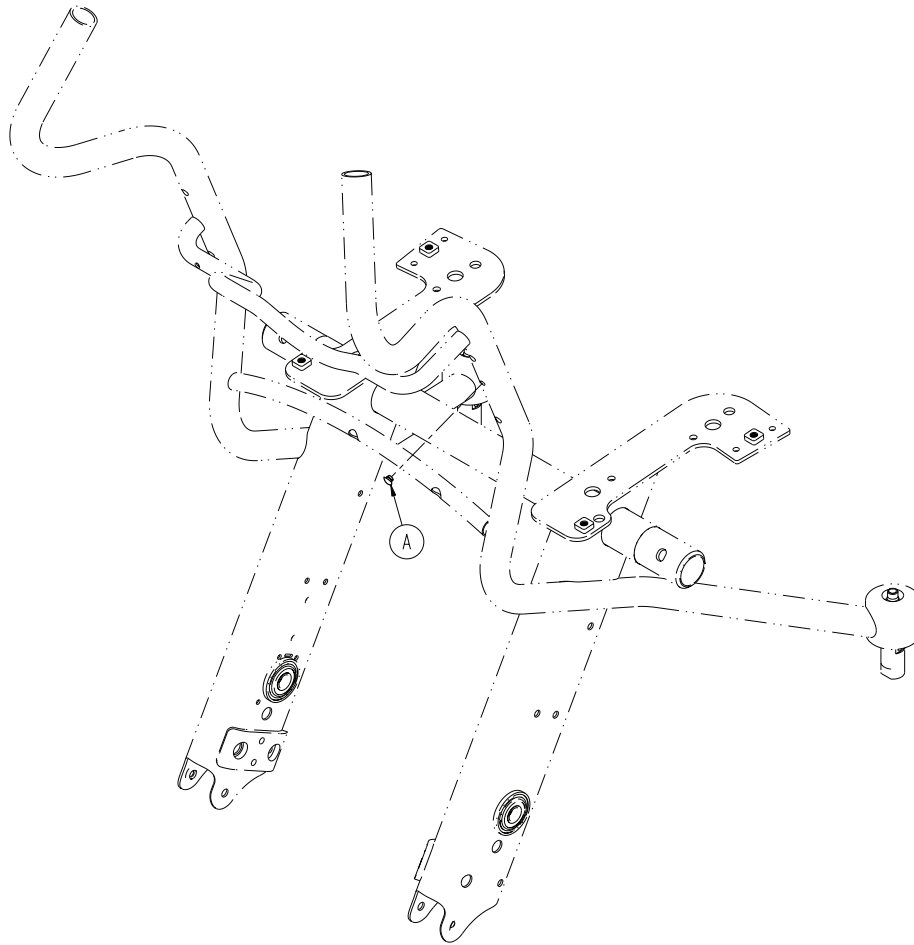
Rev A (Reference only)



Item	Number	Name	Quantity
A	0004-671-000	Flange button head cap screw	4
B	1460-013-070	Seat pan, padded	1

# No IV pole - 1460-035-100

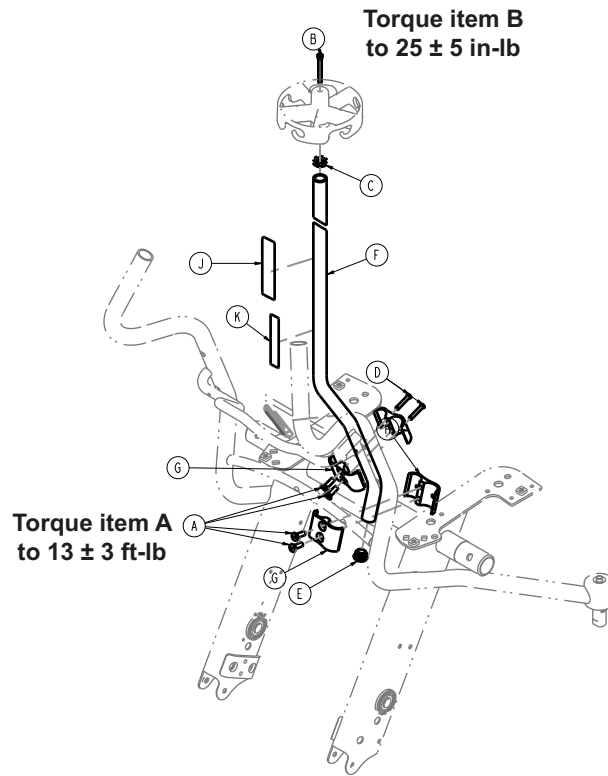
Rev A (Reference only)



Item	Number	Name	Quantity
A	1460-035-007	IV clamp hole plug	1

# Havasu IV pole - 1460-035-000

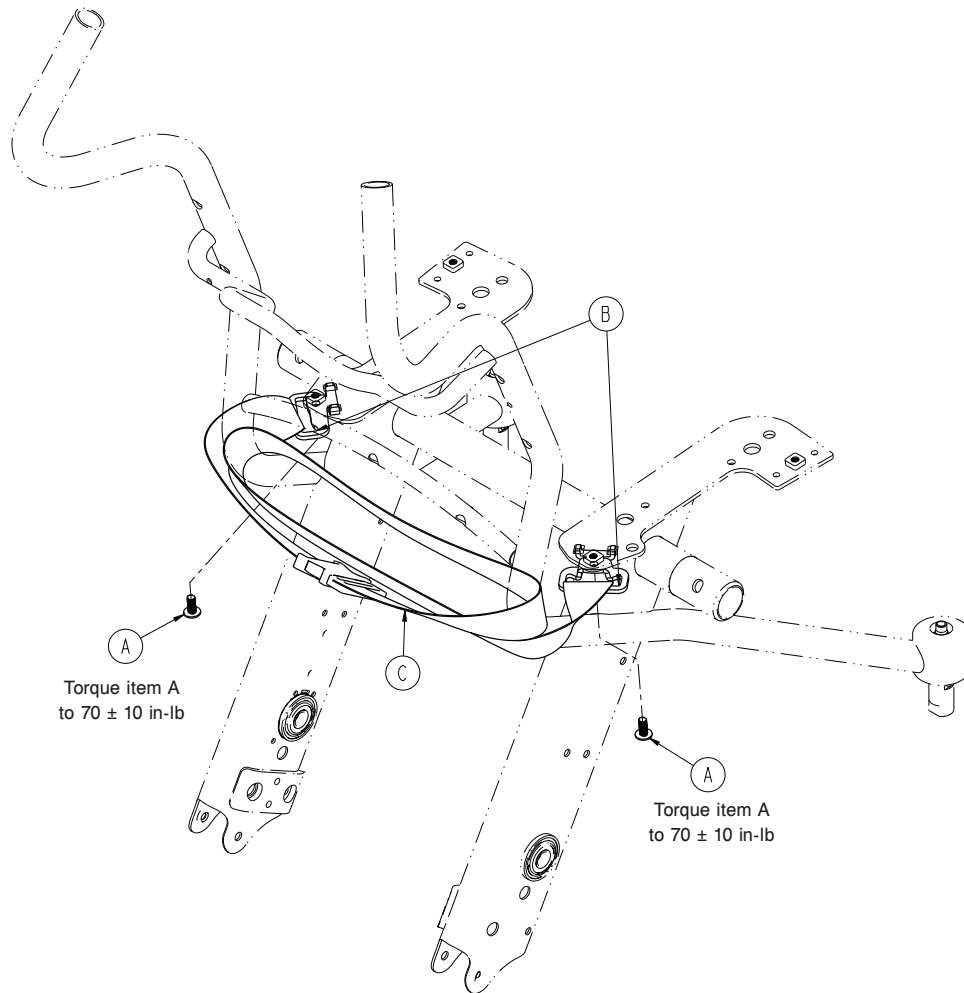
Rev AA (Reference only)



Item	Number	Name	Quantity
A	0001-210-000	Flat head cap screw	4
B	0004-672-000	Socket head cap screw	1
C	0018-045-000	Tube connector	1
D	0026-349-000	Clevis pin	2
E	0037-225-000	Tube plug	1
F	1460-035-021	IV pole	1
G	1460-035-022	IV clamp, front	2
H	1460-035-023	IV clamp, back	2
J	1460-035-031	Label, IV pole	1
K	108900010903	Label, EAR	1

# Lap belt - 1460-013-100

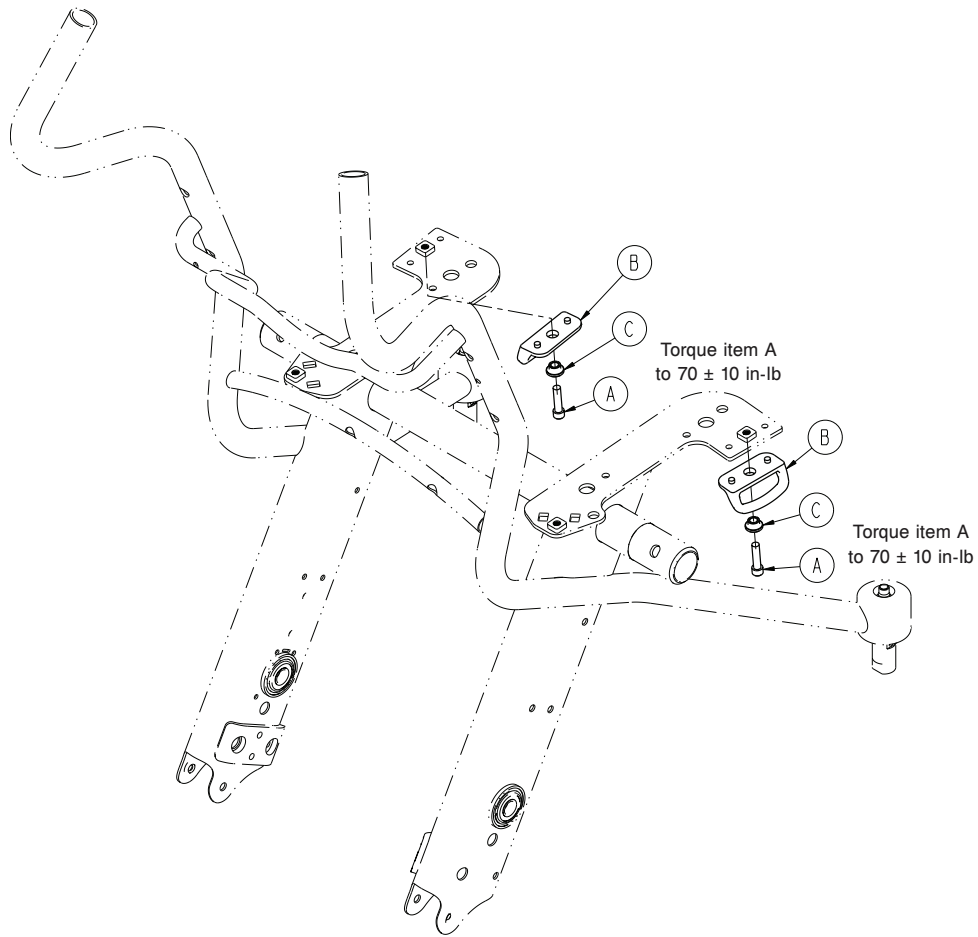
Rev A (Reference only)



Item	Number	Name	Quantity
A	0004-671-000	Flange button head cap screw	2
B	1460-013-101	Seat restraint bracket	2
C	1460-013-102	Seat lap belt	1

# Foley bag hook - 1460-101-150

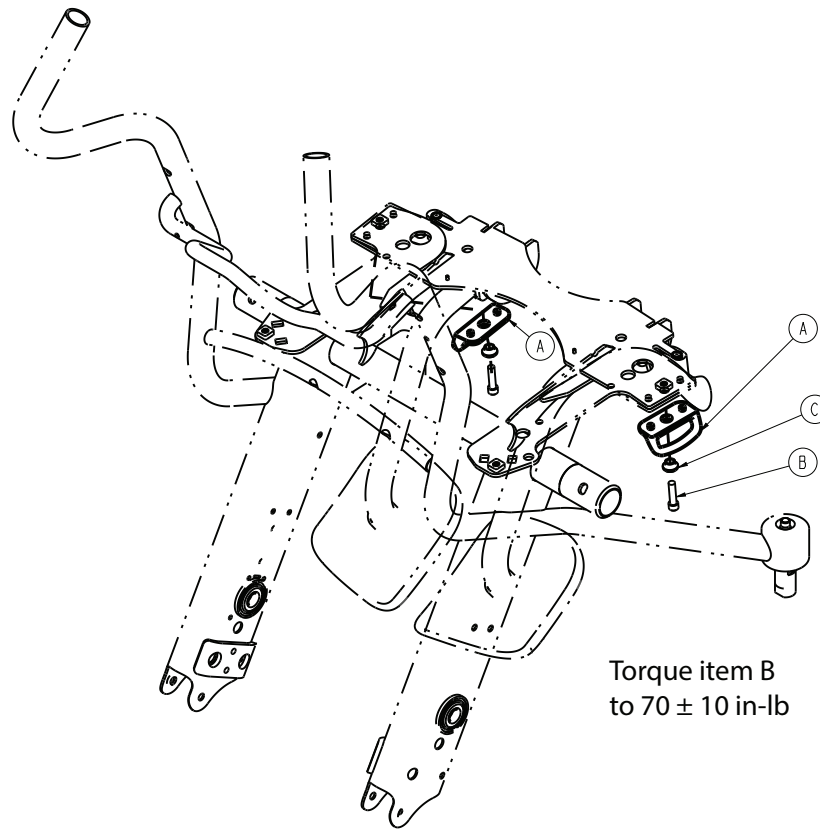
Rev A (Reference only)



Item	Number	Name	Quantity
A	0004-575-000	Socket head cap screw	2
B	1460-001-051	Foley bag hook	2
C	1460-166-025	Leg rest, foley hook spacer	2

# Foley bag hook with leg rest

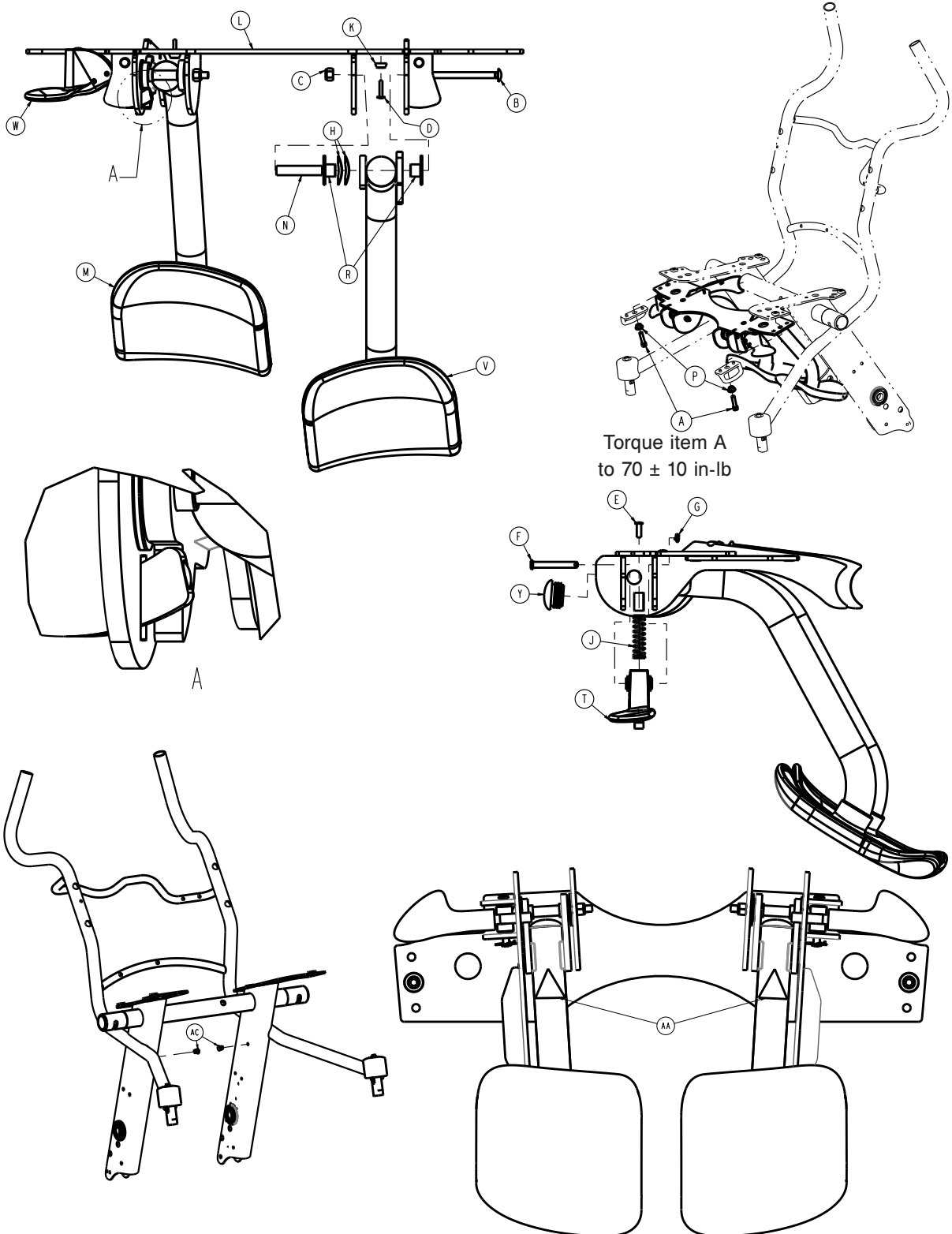
1460-001-200 Rev B (Reference only)



Item	Number	Name	Quantity
A	1460-001-051	Foley bag hook	2
B	0004-575-000	Socket head cap screw	2
C	1460-166-025	Leg rest, Foley hook spacer	2

# Leg rest - 1460-166-030

Rev AA (Reference only)



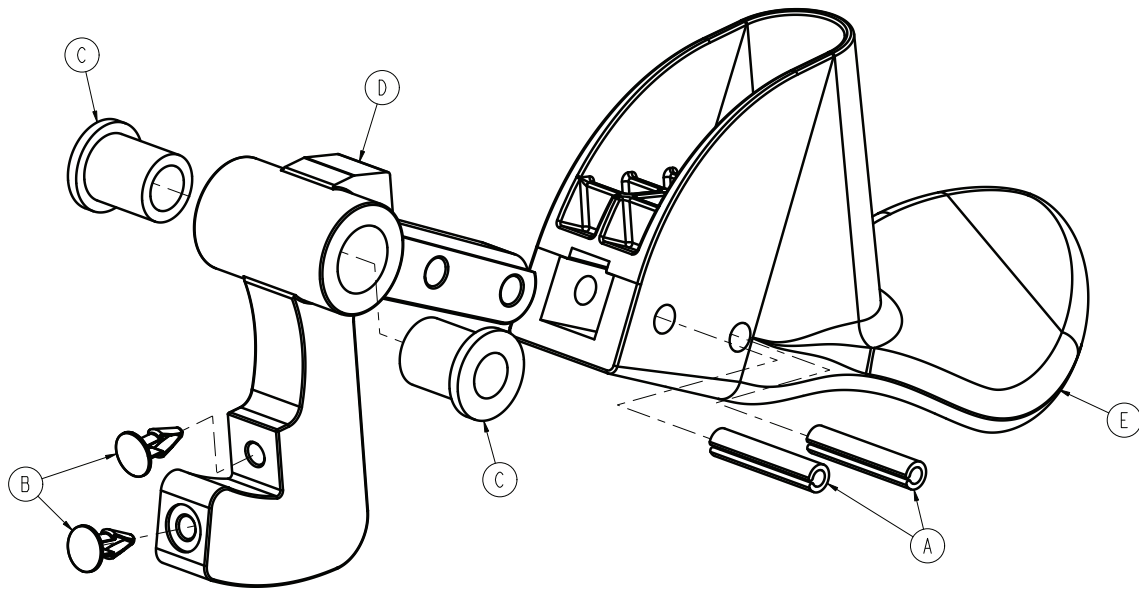
Item	Number	Name	Quantity
A	0004-575-000	Socket head cap screw	2
B	0005-053-000	Bolt	2



Item	Number	Name	Quantity
C	0016-028-000	Fiberlock hex nut	2
D	0025-103-000	Pop rivet	2
E	0025-133-000	Dome head rivet	2
F	0026-330-000	Clevis pin	2
G	0027-020-000	Rue ring cotter	2
H	0038-001-002	Washer	4
J	0038-001-007	Leg rest compression spring	2
K	0056-020-000	Rubber bumper	2
L	1460-166-005	Leg rest mounting plate weldment	1
M	1460-166-020	Leg rest assembly, right	1
N	1460-166-023	Leg rest pivot spacer	2
P	1460-166-025	Leg rest foley hook spacer	2
R	1460-166-027	Bushing	4
T	1460-166-040	<i>Leg rest latch assembly, left - 1460-166-040 (page 52)</i>	1
V	1460-166-070	Leg rest assembly, left	1
W	1460-166-080	<i>Leg rest latch assembly, right - 1460-166-080 (page 53)</i>	1
Y	1460-001-006	Frame caster tube plug	2
AA	6506-001-905	Label, warning; crushing of hands	2
AC	0029-165-000	Push-in clip	2

# Leg rest latch assembly, left - 1460-166-040

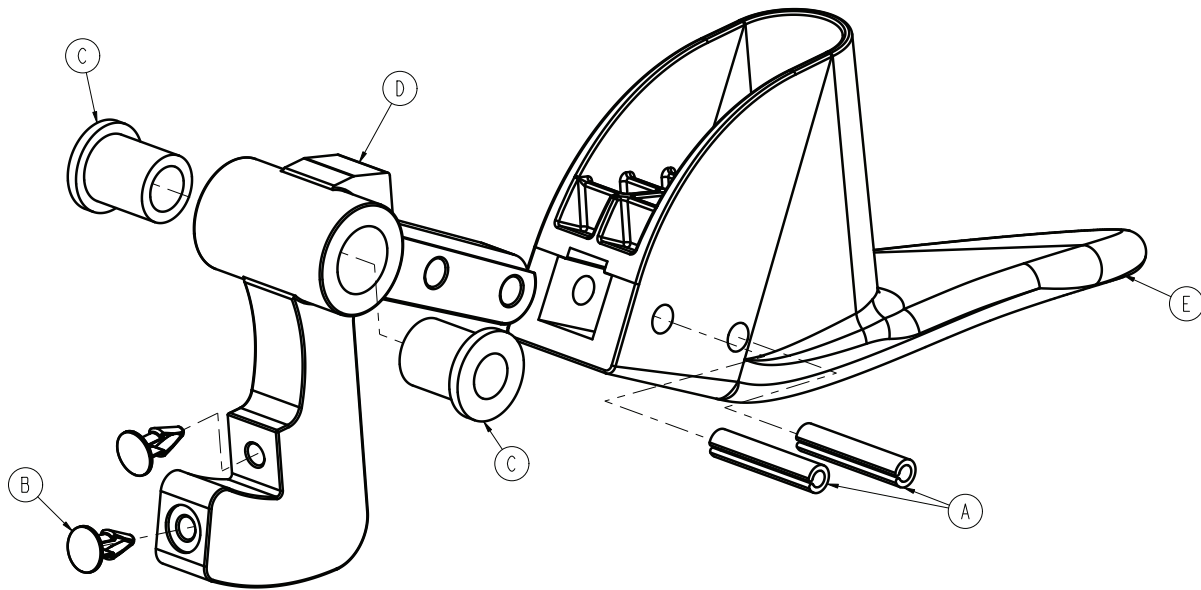
Rev B (Reference only)



Item	Number	Name	Quantity
A	0026-085-000	Roll pin	2
B	0029-030-000	Clip	2
C	0052-818-000	Flange bearing	2
D	1460-166-024	Leg rest latch	1
E	1460-166-029	Leg rest release handle, left	1

# Leg rest latch assembly, right - 1460-166-080

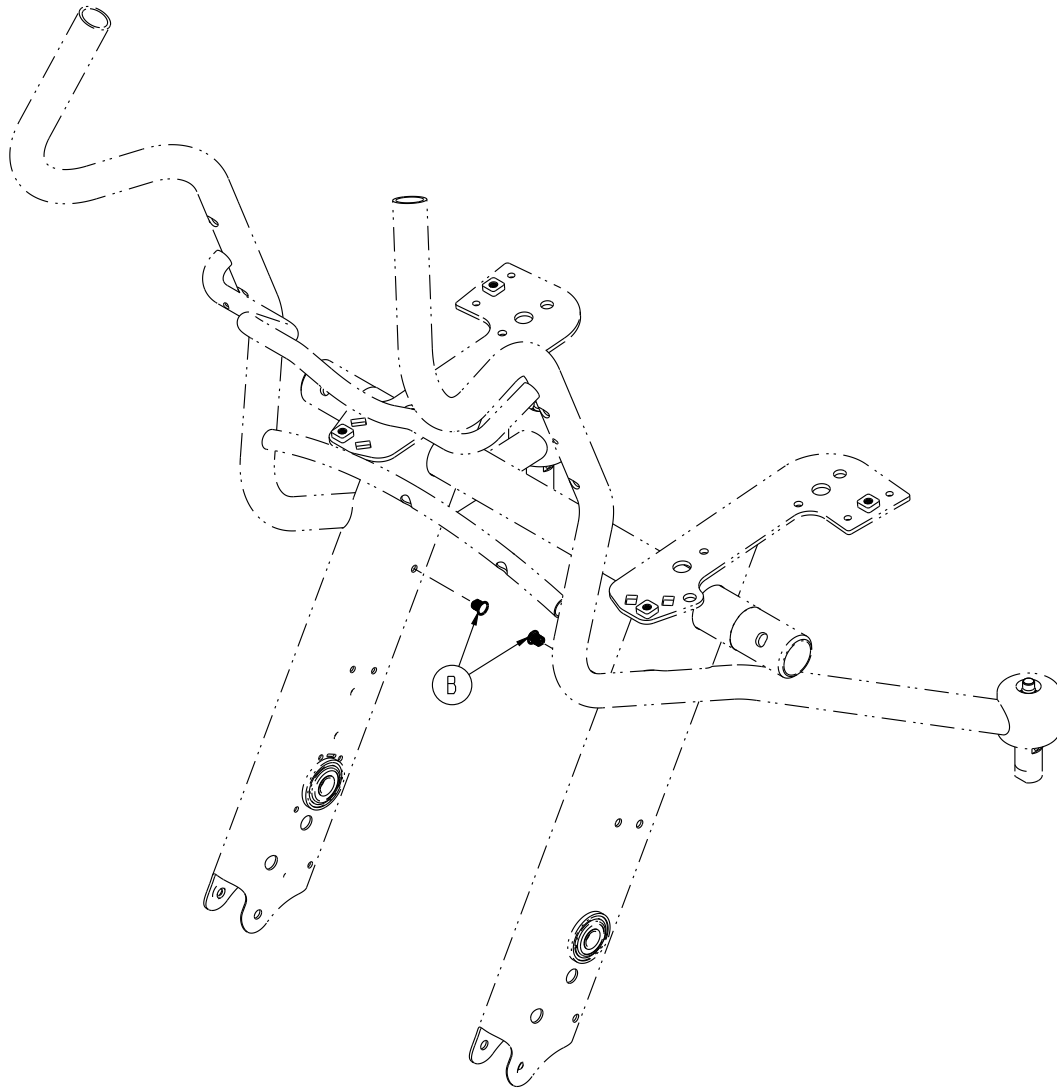
Rev B (Reference only)



Item	Number	Name	Quantity
A	0026-085-000	Roll pin	2
B	0029-030-000	Clip	2
C	0052-818-000	Flange bearing	2
D	1460-166-024	Leg rest latch	1
E	1460-166-079	Leg rest release handle, right	1

# No leg rest - 1460-066-100

Rev C (Reference only)



Item	Number	Name	Quantity
B	0029-165-000	Push-in clip	2





Stryker Corporation or its divisions or other corporate affiliated entities own, use or have applied for the following trademarks or service marks: **Havasu, Stryker**. All other trademarks are trademarks of their respective owners or holders.



Stryker Medical  
3800 E. Centre Avenue  
Portage, MI 49002  
USA