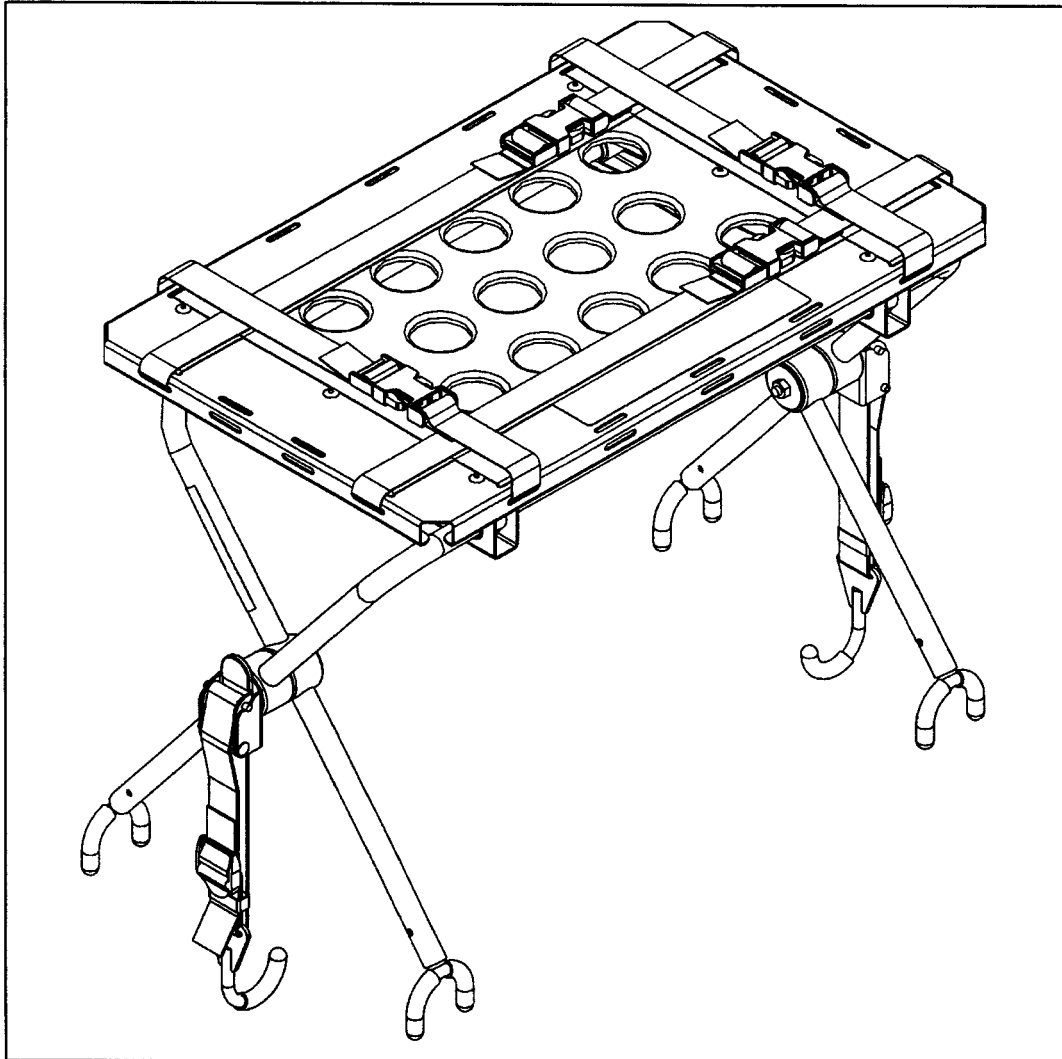


---

**IMPORTANT**  
Keep manual  
on file at all  
times.

**stryker<sup>®</sup>**  
**Medical**



**Model 6080-170**

---

**▲RUGGED<sup>™</sup>** Defibrillator Platform

---

**OPERATIONS/MAINTENANCE MANUAL**

For Parts or Technical Assistance  
1-800-784-4336

---



# Table of Contents

---

## Warranty

Obtaining Parts and Service .....	2
Supplemental Warranty Coverage .....	2
Return Authorization .....	3
Freight Damage Claims .....	3
Safety Precautions .....	4
Preventative Maintenance .....	5
Operating the Rugged Defibrillator Platform .....	6–8
Latch Strap Assembly .....	9
Defibrillator Platform Assembly .....	10, 11

# Warranty

---

## Limited Warranty:

Stryker Medical Division, a division of Stryker Corporation, warrants to the original purchaser that its products should be free from defects in material and workmanship for a period of one (1) year after date of delivery. Stryker's obligation under this warranty is expressly limited to supplying replacement parts and labor for, or replacing, at its option, any product which is, in the sole discretion of Stryker, found to be defective. Stryker warrants to the original purchaser that the frame and welds on its beds will be free from structural defects for as long as the original purchaser owns the bed. If requested by Stryker, products or parts for which a warranty claim is made shall be returned prepaid to Stryker's factory. Any improper use or any alteration or repair by others in such manner as in Stryker's judgement affects the product materially and adversely shall void this warranty. No employee or representative of Stryker is authorized to change this warranty in any way.

This statement constitutes Stryker's entire warranty with respect to the aforesaid equipment. STRYKER MAKES NO OTHER WARRANTY OR REPRESENTATION, EITHER EXPRESSED OR IMPLIED, EXCEPT AS SET FORTH HEREIN. THERE IS NO WARRANTY OF MERCHANTABILITY AND THERE ARE NO WARRANTIES OF FITNESS FOR ANY PARTICULAR PURPOSE. IN NO EVENT SHALL STRYKER BE LIABLE HEREUNDER FOR INCIDENTAL OR CONSEQUENTIAL DAMAGES ARISING FROM OR IN ANY MANNER RELATED TO SALES OR USE OF ANY SUCH EQUIPMENT.

## To Obtain Parts and Service:

Stryker products are supported by a nationwide network of dedicated Stryker Field Service Representatives. These representatives are factory trained, available locally, and carry a substantial spare parts inventory to minimize repair time. Simply call your local representative, or call Stryker Customer Service at (800) 327-0770.

## Supplemental Warranty Coverage:

Stryker has developed a comprehensive program of extended warranty options designed to keep your equipment operating at peak performance at the same time it eliminates unexpected costs. We recommend that these programs be activated *before* the expiration of the new product warranty to eliminate the potential of additional equipment upgrade charges. Stryker offers the following Supplemental Warranties:

### **Extended (Parts and Labor)**

- All replacement parts (excluding mattresses and consumable items)
- Labor and travel for *all* scheduled and unscheduled calls
- Annual Preventive Maintenance Inspections and repairs
- JCAHO paperwork for preventive maintenance
- Priority Emergency Service

### **Standard (Labor Only):**

- Labor and travel for *all* scheduled and unscheduled calls
- Annual Preventive Maintenance Inspections and repairs
- JCAHO paperwork for preventive maintenance
- Priority Emergency Service

### **Basic (Parts Only):**

- All replacement parts (excluding mattresses and consumable items)
- Priority Emergency Service

**Please call your local representative, or call (800) 327-0770 for further information**

# Warranty

---

## **Return Authorization:**

Merchandise cannot be returned without approval from the Stryker Customer Service Department. An authorization number will be provided which must be printed on the returned merchandise. Stryker reserves the right to charge shipping and restocking fees on returned items.

**SPECIAL, MODIFIED, OR DISCONTINUED ITEMS NOT SUBJECT TO RETURN.**

## **Damaged Merchandise:**

ICC Regulations require that claims for damaged merchandise must be made with the carrier within fifteen (15) days of receipt of merchandise. **DO NOT ACCEPT DAMAGED SHIPMENTS UNLESS SUCH DAMAGE IS NOTED ON THE DELIVERY RECEIPT AT THE TIME OF RECEIPT.** Upon prompt notification, Stryker will file a freight claim with the appropriate carrier for damages incurred. Claim will be limited in amount to the actual replacement cost. In the event that this information is not received by Stryker within the fifteen (15) day period following the delivery of the merchandise, or the damage was not noted on the delivery receipt at the time of receipt, the customer will be responsible for payment of the original invoice in full.

Claims for any short shipment must be made within thirty (30) days of invoice.

## **International Warranty Clause:**

This warranty reflects U.S. domestic policy. Warranty outside the U.S. may vary by country. Please contact your local Stryker Medical representative for additional information.

# Safety Precautions

---

The following is a list of safety precautions that must be observed when operating the Defibrillator Platform. The precautions are repeated throughout the manual, where applicable. Carefully read this list before using the unit.

---



## **WARNING**

- To avoid equipment damage and/or patient injury, the Defibrillator Platform must be mounted and secured properly to the Rugged cot,
  - To avoid equipment damage and/or patient injury, the defibrillator must be secured properly to the Defibrillator Platform with the straps provided.
  - The weight placed on the Defibrillator Platform must not exceed 75 pounds or equipment damage and patient injury could result.
  - Due to the difference in sizes and shapes of available defibrillators, it may be necessary to change the location and adjustment of the straps securing the defibrillator to the Defibrillator Platform. All straps must always be used and adjusted properly to ensure the security of the defibrillator and avoid patient injury or equipment damage.
-

# Preventative Maintenance

---

## CLEANING

1. Hand wash all surfaces of the Defibrillator Platform with warm water and mild detergent. Dry thoroughly.

## NOTE

Quaternary Germicidal Disinfectants, used as directed, and/or Chlorine Bleach products, typically 5.25% Sodium Hypochlorite in dilutions ranging between 1 part bleach to 100 parts water, and 2 parts bleach to 100 parts water are not considered mild detergents. These products are corrosive in nature and may cause damage to your Defibrillator Platform if used improperly. If these types of products are used to clean Stryker equipment, measures must be taken to insure the Equipment is rinsed with clean water and thoroughly dried following cleaning. Failure to properly rinse and dry the equipment will leave a corrosive residue on the surface of the equipment, possibly causing premature corrosion of critical components. Failure to follow the above directions when using these types of cleaners may void this product's warranty.

## CHECKLIST

- \_\_\_\_\_ All fasteners secure (reference assembly prints)
- \_\_\_\_\_ Platform straps intact – not frayed or torn
- \_\_\_\_\_ Both latch hooks intact and secure

Completed By: \_\_\_\_\_

Date: \_\_\_\_\_

## Parts, Service or Technical Assistance:

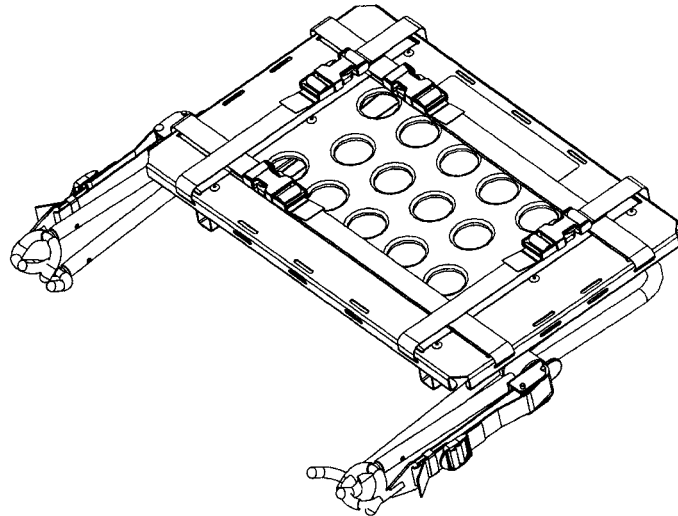
Contact Stryker Customer Service at 1-800-784-4336 or

Stryker Medical  
6300 Sprinkle Road  
Kalamazoo, MI 49001  
ATTN: Customer Service

# Operating the **ARUGGED™** Defibrillator Platform

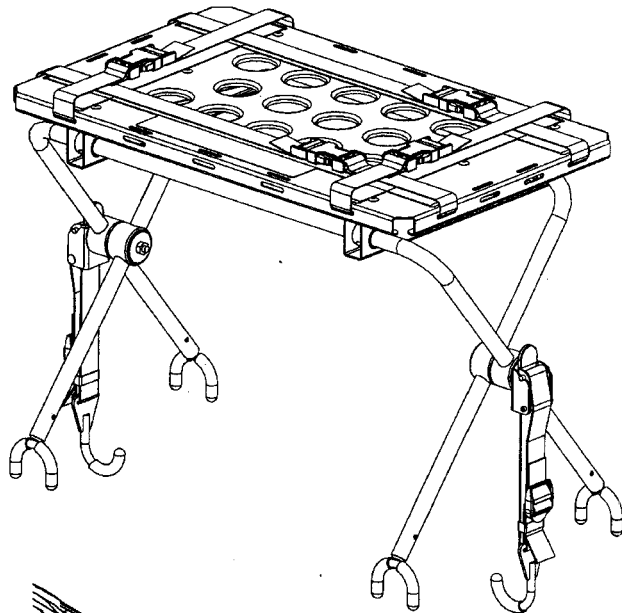
1.

Defibrillator Platform in the stored position.



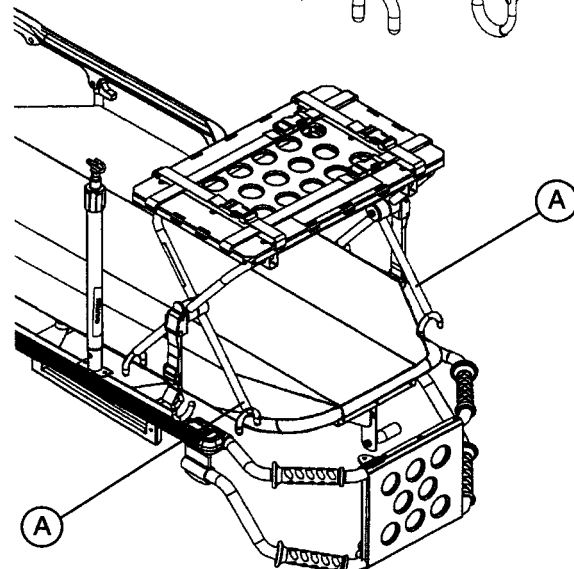
2.

Open the legs of the Defibrillator Platform.



3.

Lift the I.V. pole if the cot is equipped with one.  
Place the Defibrillator Platform on the cot frame.



## NOTE

The "inside" legs (A) of the Defibrillator Platform must be toward the foot end of the cot or the Platform will not fit properly on the cot frame.



# Operating the **RUGGED™** Defibrillator Platform

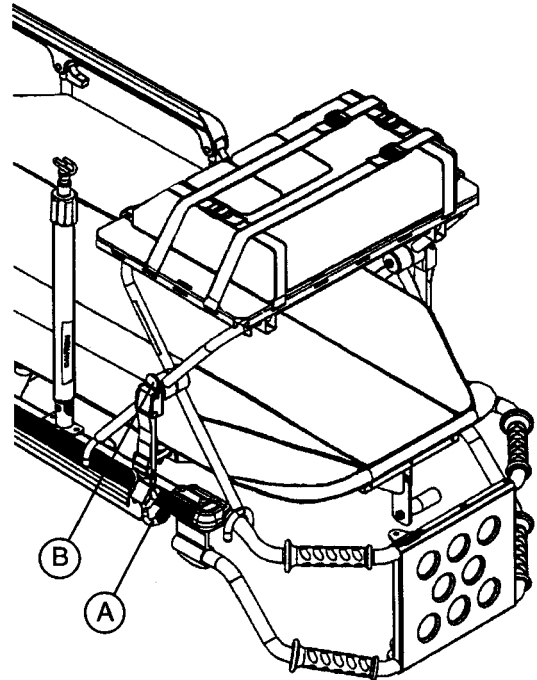
4.

Place the latch hook (A) under the cot litter frame and push the tab (B) up until it locks into place with an audible "click". Repeat on the other side of the Defibrillator Platform.



## **WARNING:**

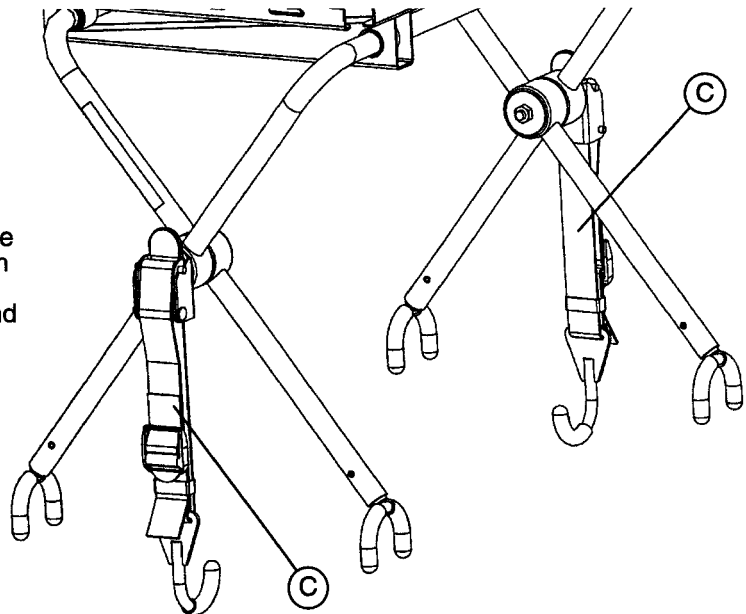
To avoid equipment damage and/or patient injury, the Defibrillator Platform must be mounted and secured properly to the Rugged cot.



5.

## **NOTE**

If the Defibrillator Platform is not securely attached to the cot when both latch hooks are engaged or if the latch hooks cannot be secured around the cot litter frame, unlatch the tab (B), loosen or tighten the strap (C) until the proper adjustment is achieved, and push the tab (B) up until it locks into place with an audible "click".



6.

Ensure the Defibrillator Platform is properly secured to the cot. Place the defibrillator on the Defibrillator Platform and secure it with the straps.

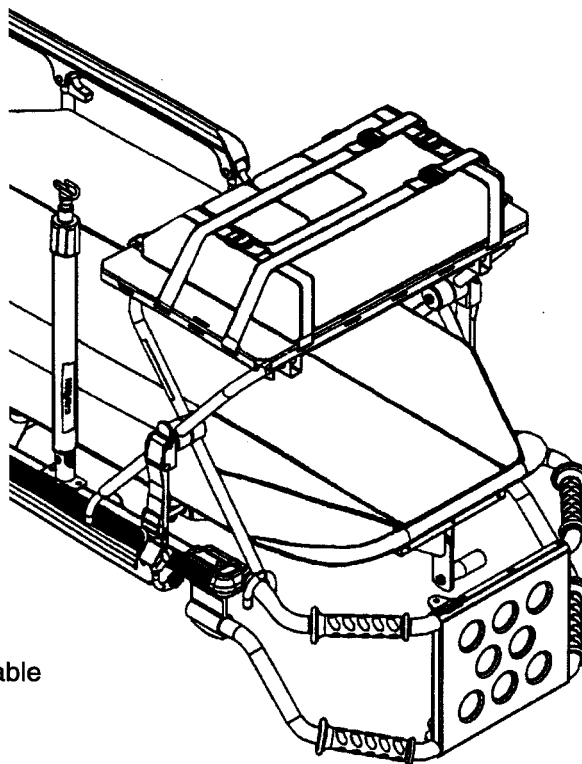


**WARNING:**

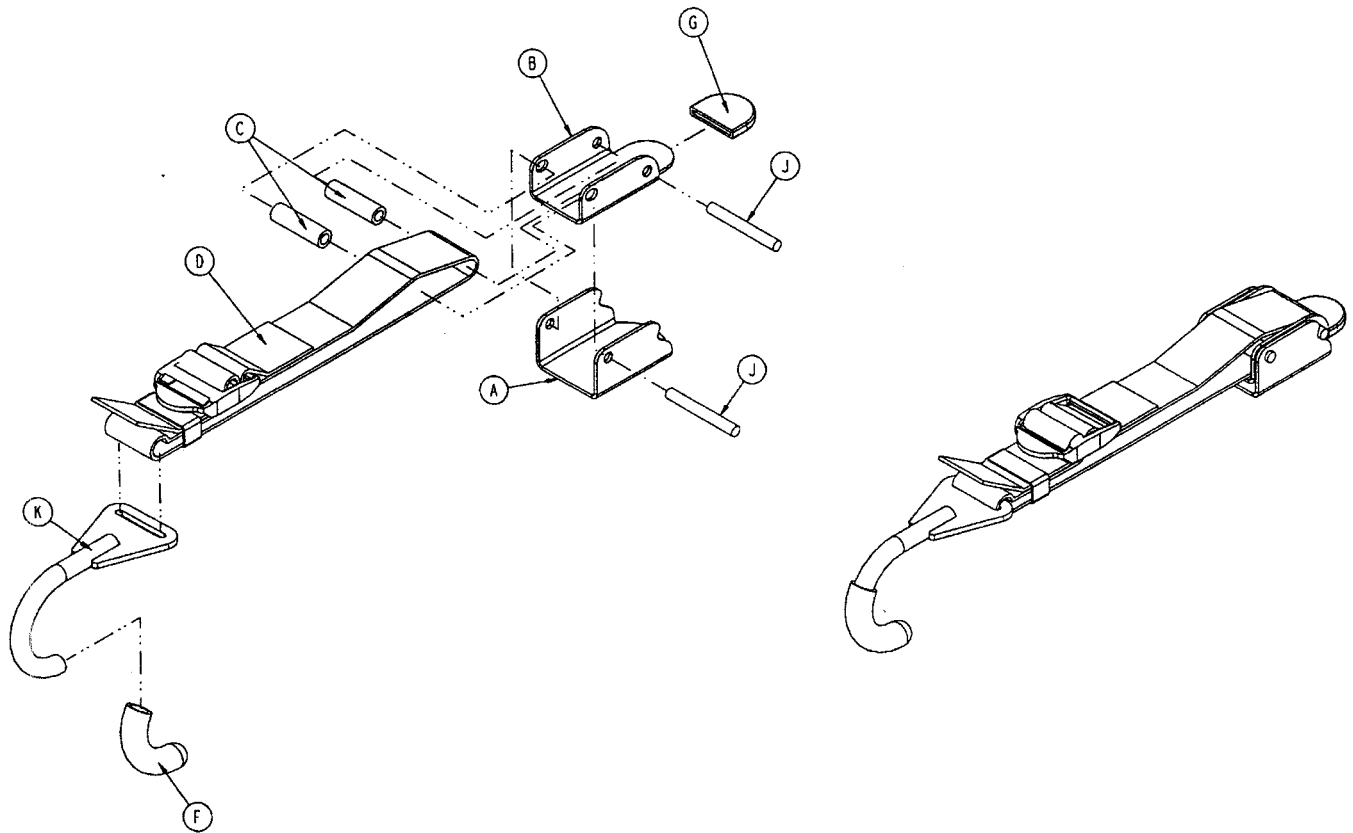
To avoid equipment damage and/or patient injury, the defibrillator must be secured properly to the Defibrillator Platform with the straps provided.

Due to the difference in sizes and shapes of available defibrillators, it may be necessary to change the location and adjustment of the straps securing the defibrillator to the Defibrillator Platform. All straps must always be used and adjusted properly to ensure the security of the defibrillator and avoid patient injury or equipment damage.

The weight placed on the Defibrillator Platform must not exceed 75 pounds or equipment damage and patient injury could result.



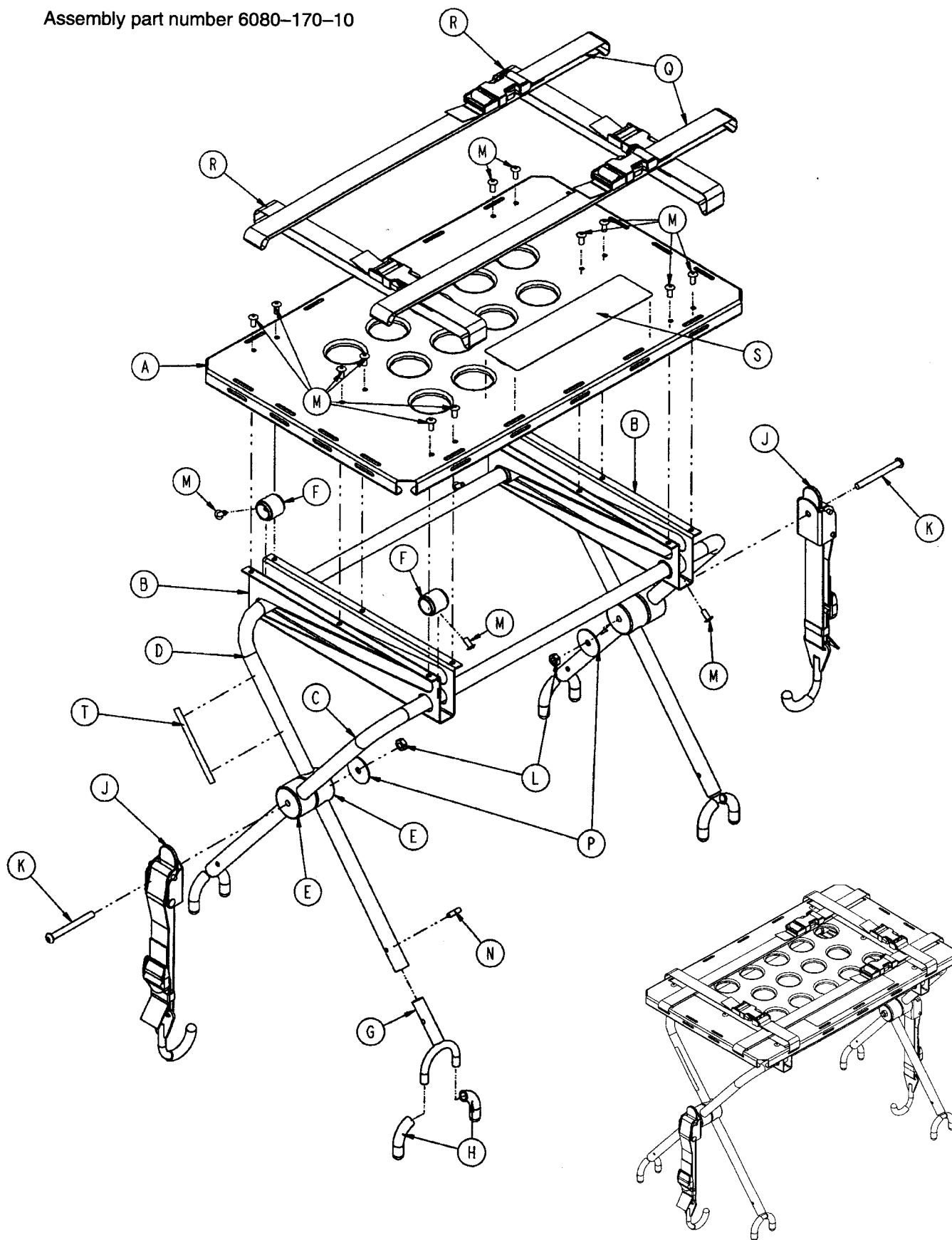
# 6080-170-20 Latch Strap Assembly



Item	Part No.	Part Name	Qty.
A	6080-170-21	Clamp Base	1
B	6080-170-22	Clamp Lever	1
C	6080-170-23	Clamp Lever Spacer	2
D	6080-170-24	Latch Restraint Strap	1
F	6080-170-26	Hook Boot	1
G	6080-170-27	Lever Grip	1
J	26-281	Groove Pin	2
K	6080-170-28	Latch Hook	1

# Defibrillator Platform Assembly

Assembly part number 6080-170-10



# Defibrillator Platform Assembly

---

Item	Part No.	Part Name	Qty.
A	6080-170-11	Top Panel	1
B	6080-170-12	Leg Support	2
C	6080-170-13	Stationary Leg	1
D	6080-170-14	Sliding Leg	1
E	6080-170-15	Leg Support Pivot	4
F	6080-170-16	Leg Collar	4
G	6080-170-50	U-Foot Weldment	4
H	6080-170-26	U-Foot Boot	10
J	(page 9)	Latch Strap Assembly	2
K	4-234	Hex Soc. But. Hd. Cap Screw	2
L	16-78	Centerlock Nut	2
M	25-79	Dome Head Rivet	16
N	26-172	Roll Pin	4
P	11-355	Flat Washer	2
Q	6060-170-22	Long Strap	2
R	6060-170-23	Short Strap	2
S	6080-90-22	Specification & Warning Label	1
T	6080-90-23	"Rugged" Label	2







### **European Representative**

Stryker France  
BP 50040-95946 Roissy Ch. de Gaulle  
Cedex-France

Phone: 33148632290  
Fax: 33148632175

**stryker®**  
**Medical**

6300 Sprinkle Road, Kalamazoo, MI 49001-9799

(800) 327-0770



DH 1/00 6080-170-9 REV C