

Power-PRO™ TL Cot Fastener

Model 6385, 6386, 6387, 6388, 6389

stryker®

Operations/Maintenance Manual



For Parts or Technical Assistance:
UK: +44 (0) 1635 262431
USA: 1-800-327-0770 (option 2)



Table of Contents

Symbols and Definitions	4
Symbols	4
Warning/Caution/Note Definition	4
Introduction	5
Intended Use Of Product	5
Specifications	5
Product Illustration	5
Warranty	6
Stryker EMS Return Policy	7
Return Authorization	7
Damaged Merchandise	7
International Warranty Clause	7
Patent Information	7
Summary of Safety Precautions	8
Product Inspection	9
Cot Fastener Installation	10
Floor Plate Mounting Model	10
Floor Plate Installation	10
Head End and Foot End Fastener Installation (Model 6385)	12
Head End and Foot End Fastener Installation (Model 6386 and 6387)	13
Head End and Foot End Fastener Installation (Model 6388 and 6389)	15
255mm Floor Track Mounting Model 6386 and 6388	17
Floor Track Installation	17
300mm Floor Track Mounting Model 6387 and 6389	18
Floor Track Installation	18
Operation Guide	19
Engaging the Cot into the Fastener	19
Removing the Cot from the Fastener	20
Cleaning	21
Preventative Maintenance	22
Fastener Lubrication	22
Regular Inspection and Adjustments	22
Maintenance Record	23
Model 6385 Floor Plate Mounting Assembly - 6385-001-010	24
Model 6386 Floor Track Mounting Assembly - 6386-001-010	25
Model 6387 Floor Track Mounting Assembly - 6387-001-010	26
Model 6388 Floor Track Mounting Assembly - 6388-001-010	27
Model 6389 Floor Track Mounting Assembly - 6389-001-010	28
Fastener Assembly, Foot End - 6385-001-012	29
Quick Reference Replacement Parts List	32

Symbols and Definitions

SYMBOLS



Warning, consult accompanying documentation



BS EN 1789:2000 Certified

WARNING/CAUTION/NOTE DEFINITION

The words WARNING, CAUTION and NOTE carry special meanings and should be carefully reviewed.

WARNING

Alerts the reader about a situation, which if not avoided, could result in death or serious injury. It may also describe potential serious adverse reactions and safety hazards.

CAUTION

Alerts the reader of a potentially hazardous situation, which if not avoided, may result in minor or moderate injury to the user or patient or damage to the equipment or other property. This includes special care necessary for the safe and effective use of the device and the care necessary to avoid damage to a device that may occur as a result of use or misuse.

NOTE

This provides special information to make maintenance easier or important instructions clearer.

Introduction

This manual is designed to assist you with the operation and maintenance of the Power-PRO TL Cot Fastener System. Carefully read this manual thoroughly before using the equipment or beginning maintenance on it. To ensure safe operation of this equipment, it is recommended that methods and procedures be established for educating and training staff on the safe operation of this cot fastener system.

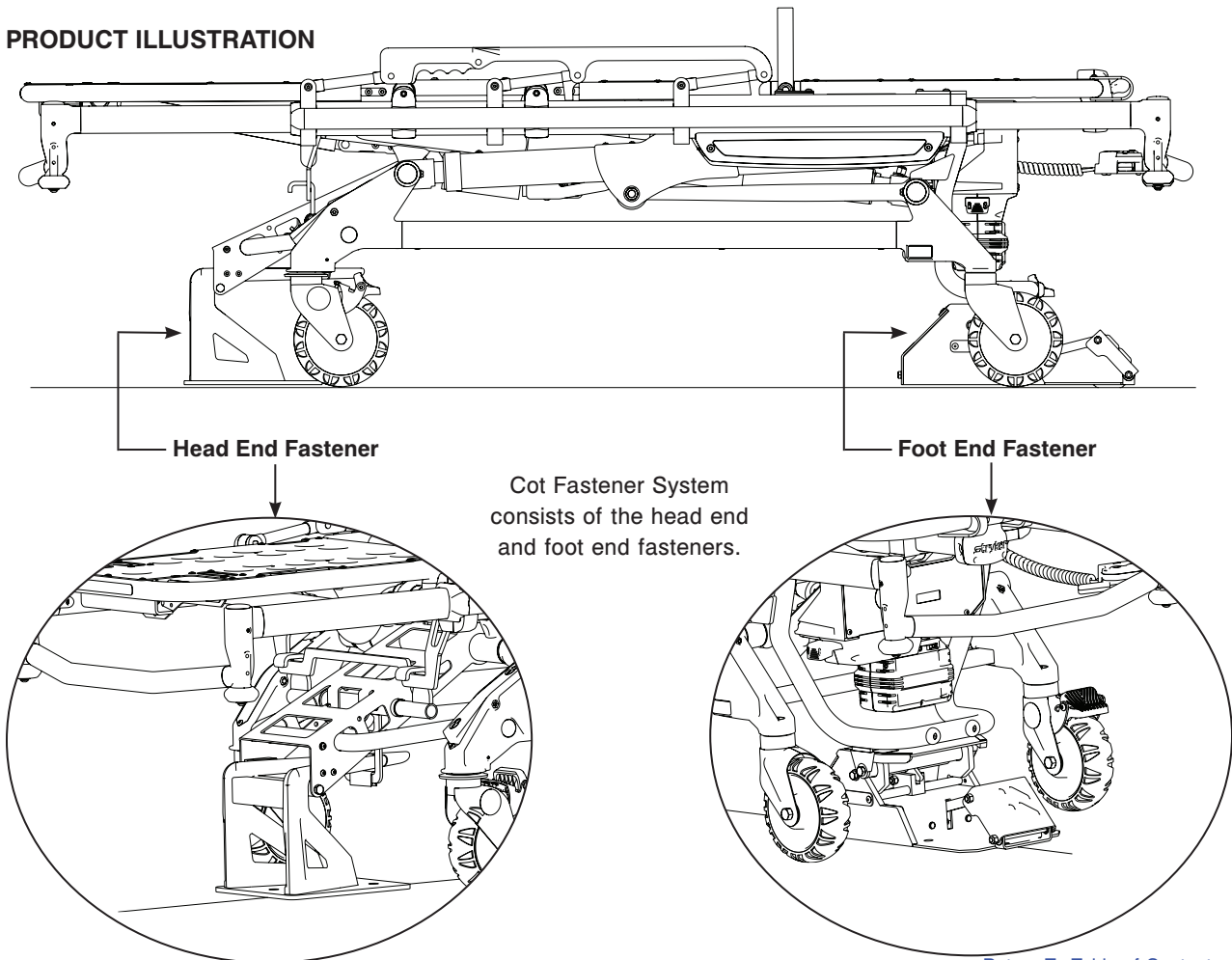
INTENDED USE OF PRODUCT

The Power-PRO TL Cot Fastener System Model 6385, 6386, 6387, 6388, and 6389 are not designed for any purpose other than to restrict movement of an ambulance cot being transported in the patient compartment of an ambulance under normal conditions. Usage of this product in any other way becomes the complete responsibility of the owner/user. Caution must be used at all times during placement of the cot into the ambulance. The Model 6550 Ambulance Cot, in combination with a Model 6385, 6386, 6387, 6388, and 6389 Cot Fastener System is designed in accordance to BS EN 1789, Medical Vehicles and their Equipment - Road Ambulances.

SPECIFICATIONS

Cot Fastener System Models	6385 - Cot Fastener Floor Plate Mounting (6385-000-000)
	6386 - Cot Fastener 255mm Floor Track Mounting (6386-000-000)
	6387 - Cot Fastener 300mm Floor Track Mounting (6387-000-000)
	6388 - Cot Fastener 255mm Floor Track Mounting (6388-000-000)
	6389 - Cot Fastener 300mm Floor Track Mounting (6389-000-000)
Compatibility	6550 Power-PRO TL Ambulance Cot
Certifications	BS EN:1789

PRODUCT ILLUSTRATION



[Return To Table of Contents](#)

Warranty

Stryker EMS, a division of the Stryker Corporation, offers two distinct warranty options in the United States:

One (1) year parts and labor. Under this option, Stryker EMS warrants to the original purchaser that its products should be free from manufacturing non-conformances that affect product performance and customer satisfaction for a period of one (1) year after date of delivery. Stryker's obligation under this warranty is expressly limited to supplying replacement parts and labor for, or replacing, at its option, any product that is, in the sole discretion of Stryker, found to be defective.

Two (2) year parts. Under this option, Stryker EMS warrants to the original purchaser that non-expendable components of its products should be free from manufacturing non-conformances that affect product performance and customer satisfaction for a period of two (2) years after date of delivery. Stryker's obligation under this warranty is expressly limited to supplying replacement parts for, or replacing, at its option, any product which is, in the sole discretion of Stryker, found to be defective. Expendable components, i.e. mattresses, restraints, I.V. poles, storage nets, storage pouches, O2 straps, and other soft goods, have a one (1) year limited warranty with this option.

Under either warranty option, Stryker Medical EMS products are designed for a 7 year expected service life under normal use, conditions, and with appropriate periodic maintenance as described in the maintenance manual for each device. Stryker warrants to the original purchaser that the welds on its EMS products will be free from structural defects for the expected 7 year life of the EMS product as long as the original purchaser owns the product.

If Stryker requests, products or parts for which an original purchaser makes a warranty claim, the purchaser shall return the product or part prepaid freight to Stryker's factory.

Any improper use or alteration or repair by unauthorized service providers in such a manner as in Stryker's judgment affects the product materially and adversely, shall void this warranty. Any repair of Stryker products using parts not provided or authorized by Stryker shall void this warranty. No employee or representative of Stryker is authorized to change this warranty in any way.

This statement constitutes Stryker EMS's entire warranty with respect to the aforesaid equipment. STRYKER MAKES NO OTHER WARRANTY OR REPRESENTATION EITHER EXPRESSED OR IMPLIED, EXCEPT AS SET FORTH HEREIN. THERE IS NO WARRANTY OF MERCHANTABILITY AND THERE ARE NO WARRANTIES OF FITNESS FOR ANY PARTICULAR PURPOSE. IN NO EVENT SHALL STRYKER BE LIABLE HEREUNDER FOR INCIDENTAL OR CONSEQUENTIAL DAMAGES ARISING FROM OR IN ANY MANNER RELATED TO SALES OR USE OF ANY SUCH EQUIPMENT.

Warranty

STRYKER EMS RETURN POLICY

Cots, Stair Chairs, Evacuation Chairs, Cot Fasteners and Aftermarket Accessories may be returned up to 180 days of receipt if they meet the following guidelines:

Prior to 30 Days

- 30 day money back guarantee in effect
- Stryker EMS is responsible for all charges
- Returns will not be approved on modified items

Prior to 90 Days

- Product must be **unused, undamaged** and in the original packaging
- Customer is responsible for a 10% restocking fee

Prior to 180 Days

- Product must be **unused, undamaged** and in the original packaging
- Customer is responsible for a 25% restocking fee

RETURN AUTHORIZATION

Merchandise cannot be returned without approval from the Stryker Customer Service Department. An authorization number will be provided which must be printed on the returned merchandise. Stryker reserves the right to charge shipping and restocking fees on returned items.

SPECIAL, MODIFIED, OR DISCONTINUED ITEMS NOT SUBJECT TO RETURN.

DAMAGED MERCHANDISE

ICC Regulations require that claims for damaged merchandise must be made with the carrier within fifteen (15) days of receipt of merchandise. **DO NOT ACCEPT DAMAGED SHIPMENTS UNLESS SUCH DAMAGE IS NOTED ON THE DELIVERY RECEIPT AT THE TIME OF RECEIPT.** Upon prompt notification, Stryker will file a freight claim with the appropriate carrier for damages incurred. Claim will be limited in amount to the actual replacement cost. In the event that this information is not received by Stryker within the fifteen (15) day period following the delivery of the merchandise, or the damage was not noted on the delivery receipt at the time of receipt, the customer will be responsible for payment of the original invoice in full.

Claims for any short shipment must be made within thirty (30) days of invoice.

INTERNATIONAL WARRANTY CLAUSE

This warranty reflects U.S. domestic policy. Warranty outside the U.S. may vary by country. Please contact your local Stryker Medical representative for additional information.

PATENT INFORMATION

Stryker products are covered by one or more of the following patents:

United States	5,575,026	6,276,010	6,648,343	6,908,133	6,796,757
	5,537,700	6,125,485	6,735,794	7,100,224	7,398,571
	D527,103				

Other Patents Pending

Summary of Safety Precautions

Carefully read and strictly follow the warnings and cautions listed on this page. Service only by qualified personnel.

WARNING

- It is the responsibility of the cot operator to ensure that the cot being used in the Stryker Model 6385, 6386, 6387, 6388, and 6389 Cot Fastener System meets the installation specifications listed on [pages 10 through 18](#). Injury may result if a non-compatible cot is used in the Stryker Model 6385, 6386, 6387, 6388, and 6389 Cot Fastener System.
 - Improper installation can result in injury. Install the cot fastener as described in this manual.
 - The fastener closes with a strong spring action. To avoid injury, DO NOT use hand or fingers to depress the release lever when the hooks are open.
 - Improper testing can result in injury. Test the fastener using BS:EN1789 as a minimum.
 - Replace the cot fastener system if it has been involved in an accident. A fastener that has been involved in an accident may be damaged, possibly causing failure to operate properly. Injury could result.
 - SOME CLEANING PRODUCTS ARE CORROSIVE IN NATURE AND MAY CAUSE DAMAGE TO THE PRODUCT IF USED IMPROPERLY. When cleaning Stryker patient care equipment, measures must be taken to insure the equipment is wiped with a cloth soaked in clean water and thoroughly dried following cleaning.
 - Failure to properly rinse and dry the equipment after cleaning may leave a corrosive residue on the surface of the equipment, possibly causing premature corrosion of critical components.
-

CAUTION

- Do not use screws smaller than the 3/8" diameter specified to anchor any of the floor plates.
 - The cot must be in its fully down position to properly engage the cot fastener.
 - To ensure the cot is in the lowest position press the retract (-) button until the cot stops moving downward. This should be done prior to attempting to engage the cot into the cot fastener.
 - To reduce risk of damage to the cot or cot fastener, **do not attempt to activate the cot height activation while it is engaged in the cot fastener.**
-

Product Inspection

GENERAL INSPECTION

The condition of the cot fastener system is the responsibility of the owner. It is important that the cot fastener system is working properly before the product is put into service. Have a qualified service person use the following list and the operation instructions to check the cot fastener system before the product is put into service.

Item	Routine	Page(s)
Floor Plates (6385 Only)	Included and intact	10
Foot End Fastener	Included and intact Locks and unlocks properly	12 (Model 6385) 13 (Model 6386 & 6387) 15 (Model 6388 & 6389)
Head End Fastener	Included and intact	12 (Model 6385) 13 (Model 6386 & 6387) 15 (Model 6388 & 6389)

Cot Fastener Installation

FLOOR PLATE MOUNTING MODEL

The Stryker Cot Fastener System for the Floor Plate Mounting Model is designed to be compatible only with cots which conform to the Floor Plate Mounting Installation specifications listed below and comply with section 3.11.5 and 3.11.7 of the Federal Specification for the Star-of-Life Ambulance, KKK-A-1822 Revision E.

FLOOR PLATE INSTALLATION

1. Determine the desired position of the cot inside the vehicle allowing for proper clearance around the cot.

Note: Federal ambulance specifications regarding aisle width and attendant seating may affect positioning of the mounting brackets. If specifications do not apply, the installer should be certain there is adequate clearance for proper patient access, traction splint projection, rear door closure, etc.

2. Using the dimensions shown in Figure 1, locate and drill the points where the floor plates will attach.

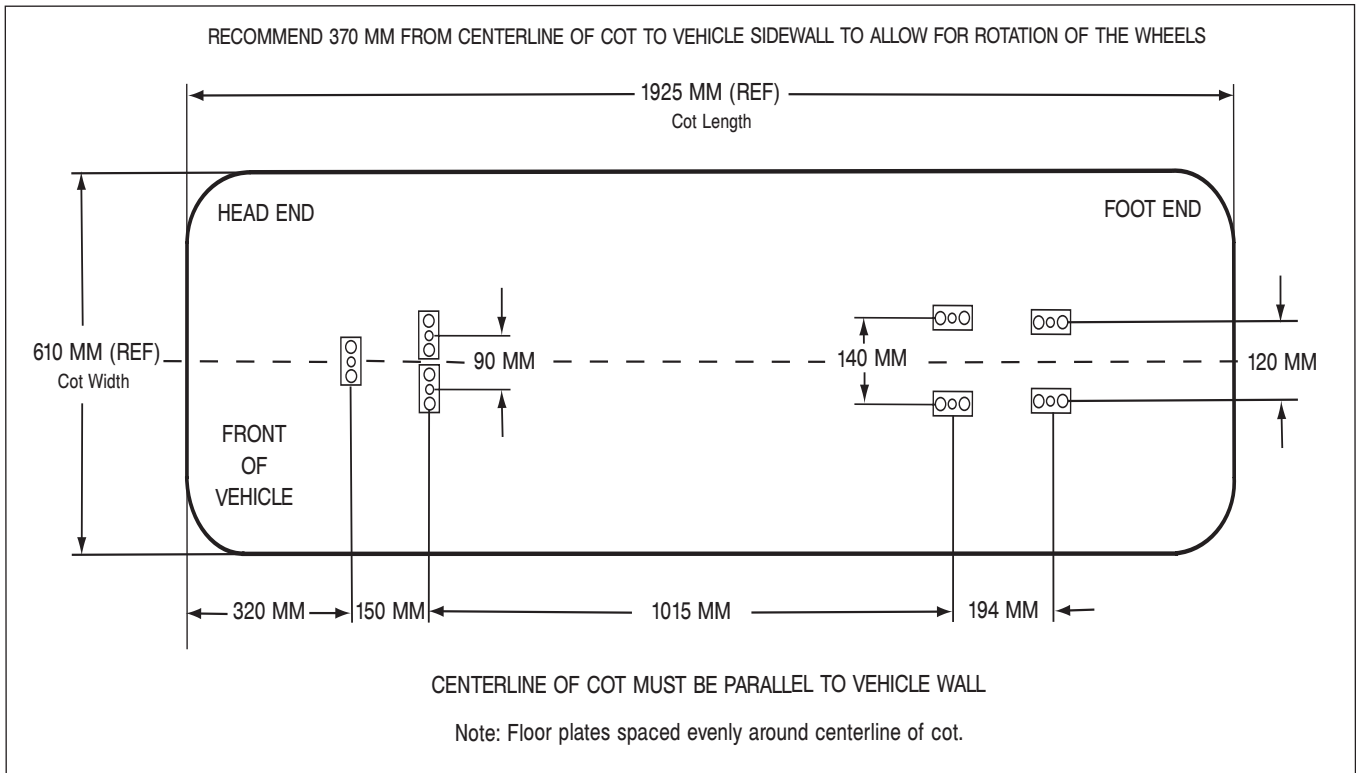


Figure 1: Floor Plate Installation Locations

Cot Fastener Installation

FLOOR PLATE INSTALLATION (CONTINUED)

3. Cut 1" x 2-1/2" x 9/16" deep recessed openings into the floor centered over the plate locating points as shown in Figure 2.
4. Using two 3/8" diameter socket head cap screws, preferably grade 8, anchor each floor plate into the recessed openings with the counter-bored holes facing up as shown in Figure 2. Steel backing plates (or equivalent) are required for added support as shown in Figure 3 (steel backing plates not supplied).

CAUTION

Do not use screws smaller than the 3/8" diameter specified to anchor any of the floor plates.

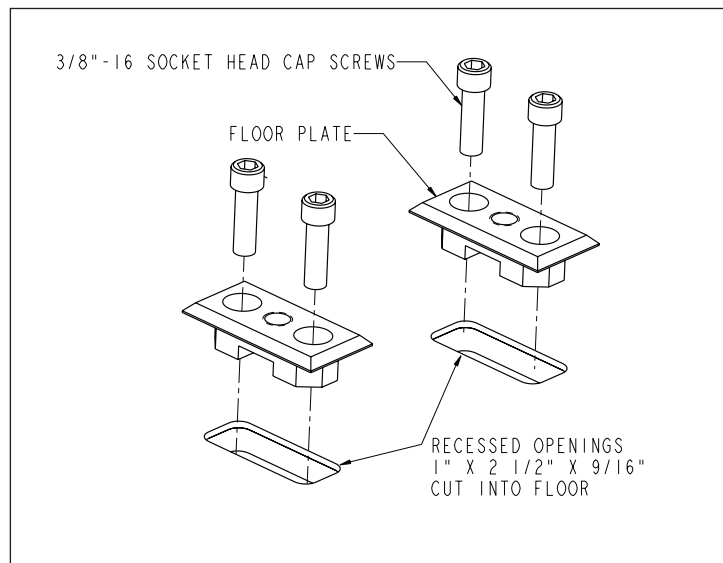


Figure 2: Floor Plate Installation

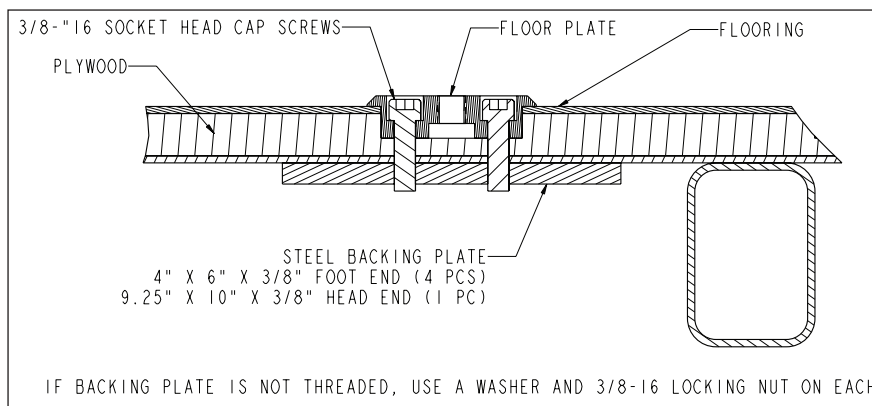


Figure 3: Floor Plate Installation

Cot Fastener Installation

HEAD END AND FOOT END FASTENER INSTALLATION (MODEL 6385)

1. Remove the back cover on the foot end fastener. Mount the foot end fastener on the four floor plates and secure with 1/2"-13 hex head cap screws and lock washers as shown in Figure 4. Secure the back cover back onto the foot end fastener.
2. Mount the head end fastener on the three floor plates and secure with three 1/2"-13 hex head cap screws and lock washers as shown in Figure 4.
3. Confirm fastener spacing as shown in Figure 5.

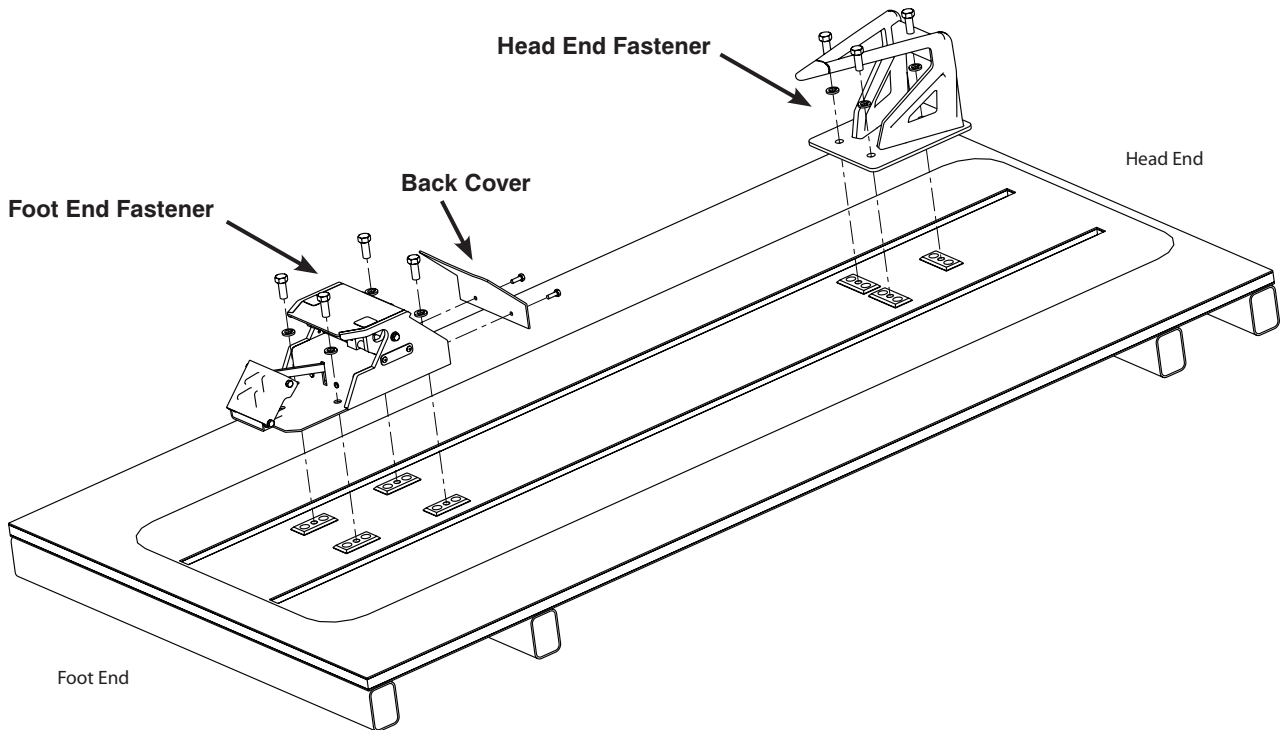


Figure 4: Head End and Foot End Fastener - Floor Plate Installation

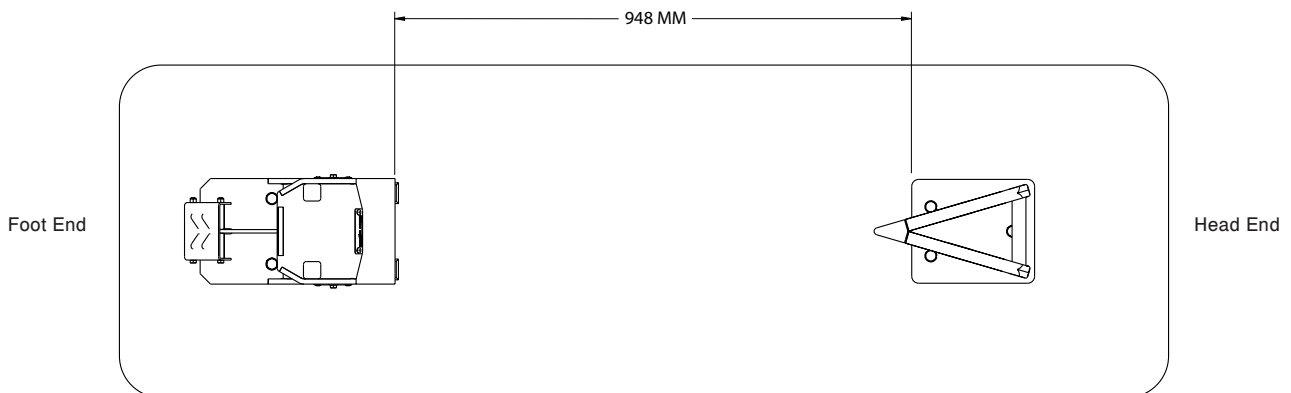


Figure 5: Fastener Spacing

Cot Fastener Installation

HEAD END AND FOOT END FASTENER INSTALLATION (MODEL 6386 AND 6387)

ASSEMBLE BOTH FASTENERS

1. Position the eight washers between the eight screws (four on each side) and the foot end fastener lock down base plate as shown in Figure 6.
Note: Position the track mounted fastener (Unwin adaptor) under the lock down base plate with the black arrow on the Unwin adaptor facing toward the head end of the ambulance as shown in Figure 6.
2. Loosely tighten the screws to attach the track mounted fastener (Unwin adaptor) to the foot end fastener lock down base plate as shown in Figure 6.
3. Repeat steps 1 - 2 to attach the track mounted fastener (Unwin adaptor) to the head end fastener lock down plate.

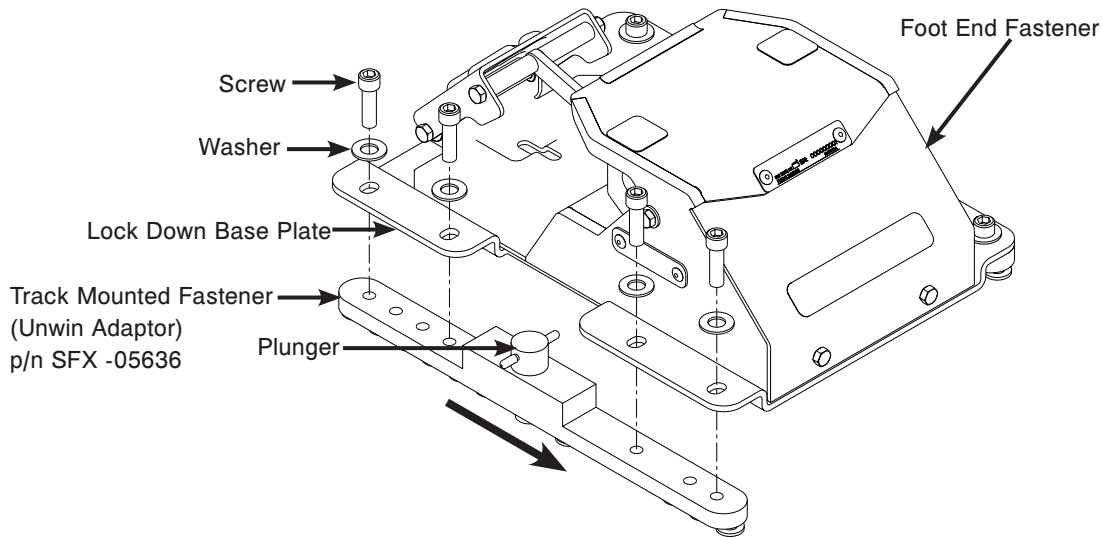


Figure 6: Assemble the Foot End Fastener

INSTALL BOTH FASTENERS

1. Identify the location for the foot end fastener and head end fastener from Figure 12 on [page 17](#) for Model 6386 and Figure 13 on [page 18](#) for Model 6387.
Note: The black arrow on the track mounted fastener (Unwin adaptor) points toward the front of the ambulance.
2. Unlock the plunger on the track mounted fastener (Unwin adaptor) of the foot end fastener by turning it counter-clockwise.
3. Disengage the plunger by lifting up with the plunger key and turning the plunger one-half of a revolution.
4. Align the foot end fastener in the floor track.
5. Engage the plunger and lock the track mounted fastener (Unwin adaptor) to the floor track by turning the plunger key clockwise.

Cot Fastener Installation

HEAD END AND FOOT END FASTENER INSTALLATION (MODEL 6386 AND 6387) - CONTINUED

INSTALL BOTH FASTENERS - CONTINUED

- Repeat steps 2 - 5 to install the head end fastener to the floor track (Figure 7).

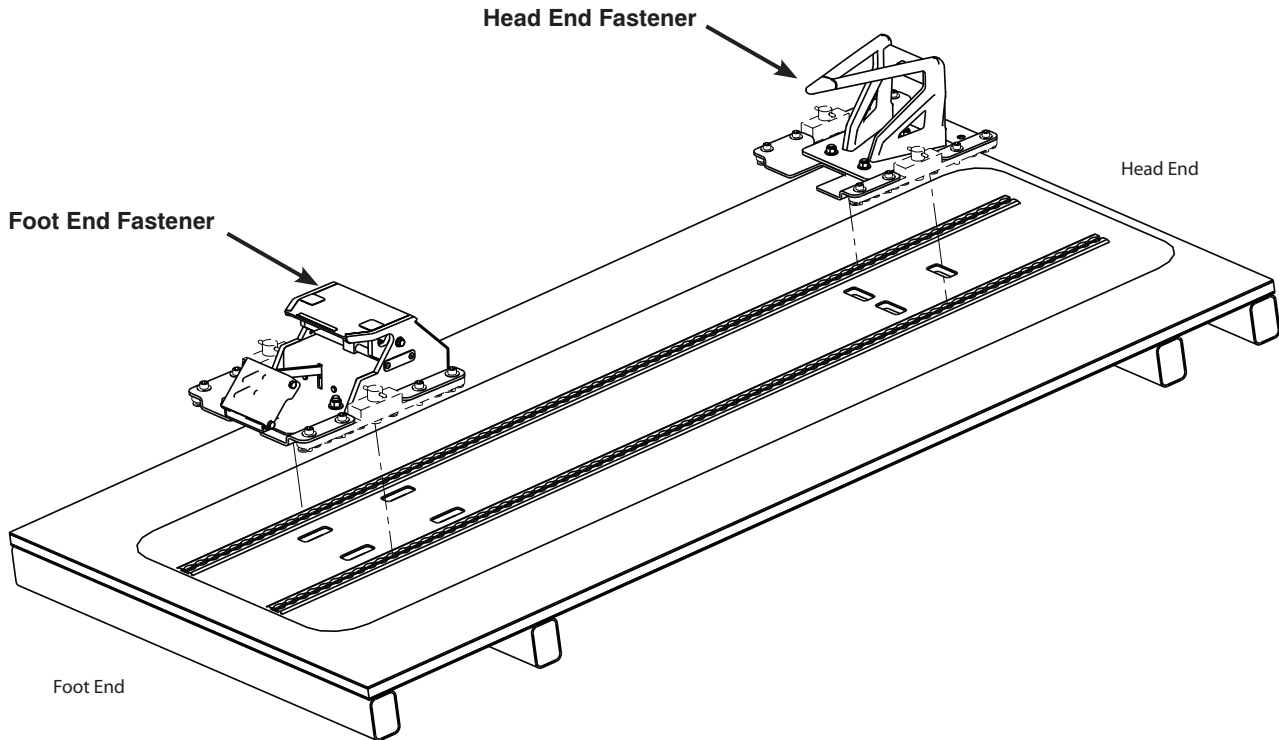


Figure 7: Head End and Foot End Fastener - Floor Track Installation

- Confirm fastener spacing as shown in Figure 8.

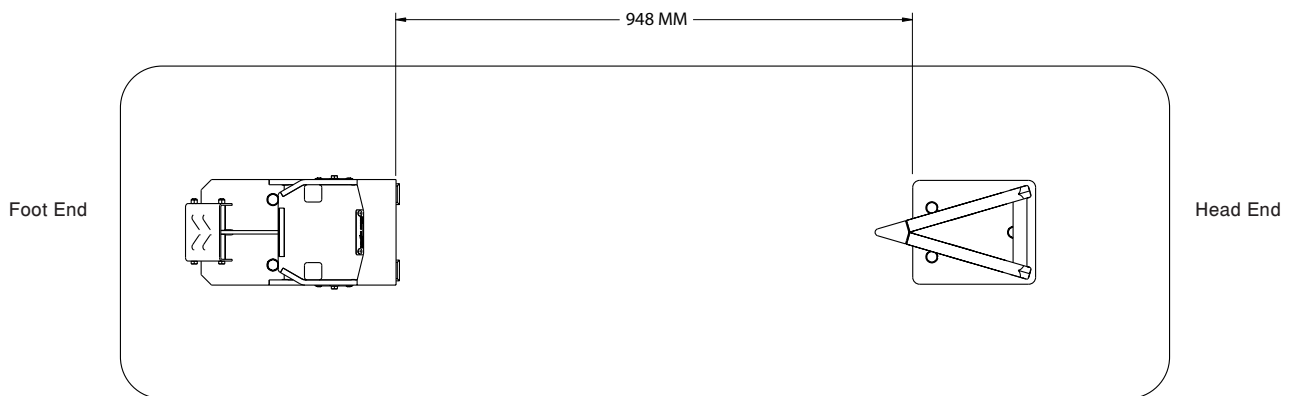


Figure 8: Fastener Spacing

- Adjust the track mounted fasteners (Unwin adaptors), as needed to fit into the tracks, by loosening the four screws on either side of the fastener that attach the locks to the lock down base plate.
- Retighten the screws after aligning the locks with the tracks.

Track mounted fastener (Unwin adaptor) supplied by Unwin Safety Systems.

Cot Fastener Installation

HEAD END AND FOOT END FASTENER INSTALLATION (MODEL 6388 AND 6389)

ASSEMBLE BOTH FASTENERS

1. Position the four supplied lock down washers (p/n 6388-001-080) between the track mounted fastener (NMI adaptor) and the foot end fastener lock down base plate as shown in Figure 9.
2. Loosely tighten the wing nuts to attach the track mounted fastener (NMI adaptor) to the foot end fastener lock down base plate as shown in Figure 9.
3. Repeat steps 1 - 2 to attach the track mounted fastener (NMI adaptor) to the head end fastener lock down plate.

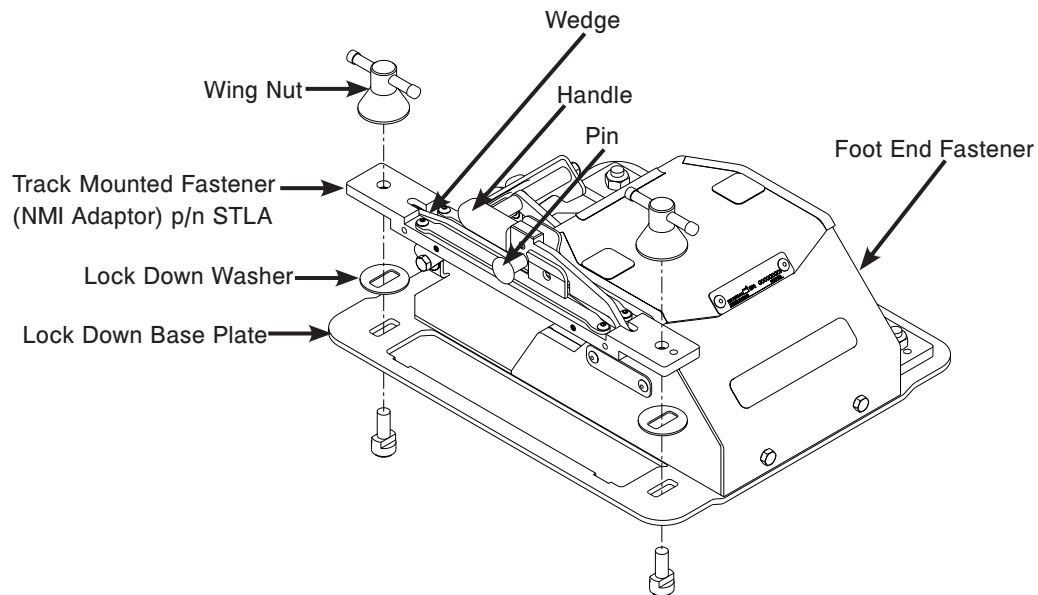


Figure 9: Assemble the Foot End Fastener

INSTALL BOTH FASTENERS

1. Identify the location for the foot end fastener and head end fastener from Figure 12 on [page 17](#) for Model 6388 and Figure 13 on [page 18](#) for Model 6389.
2. Unlock the the track mounted fastener (NMI adaptor) of the foot end fastener by pulling the pin to unlock.
3. Pull the handle and then the wedge up to open.
4. Align the foot end fastener in the floor track.
5. Lock the track mounted fastener (NMI adaptor) to the floor track by first folding the wedge and then the handle down to close.
6. Tighten the wing nuts to securely attach the track mounted fastener (NMI adaptor) to the foot end fastener lock down base.

Cot Fastener Installation

HEAD END AND FOOT END FASTENER INSTALLATION (MODEL 6388 AND 6389) - CONTINUED

INSTALL BOTH FASTENERS - CONTINUED

- Repeat steps 2 - 4 to install the head end fastener on the floor track (Figure 10).

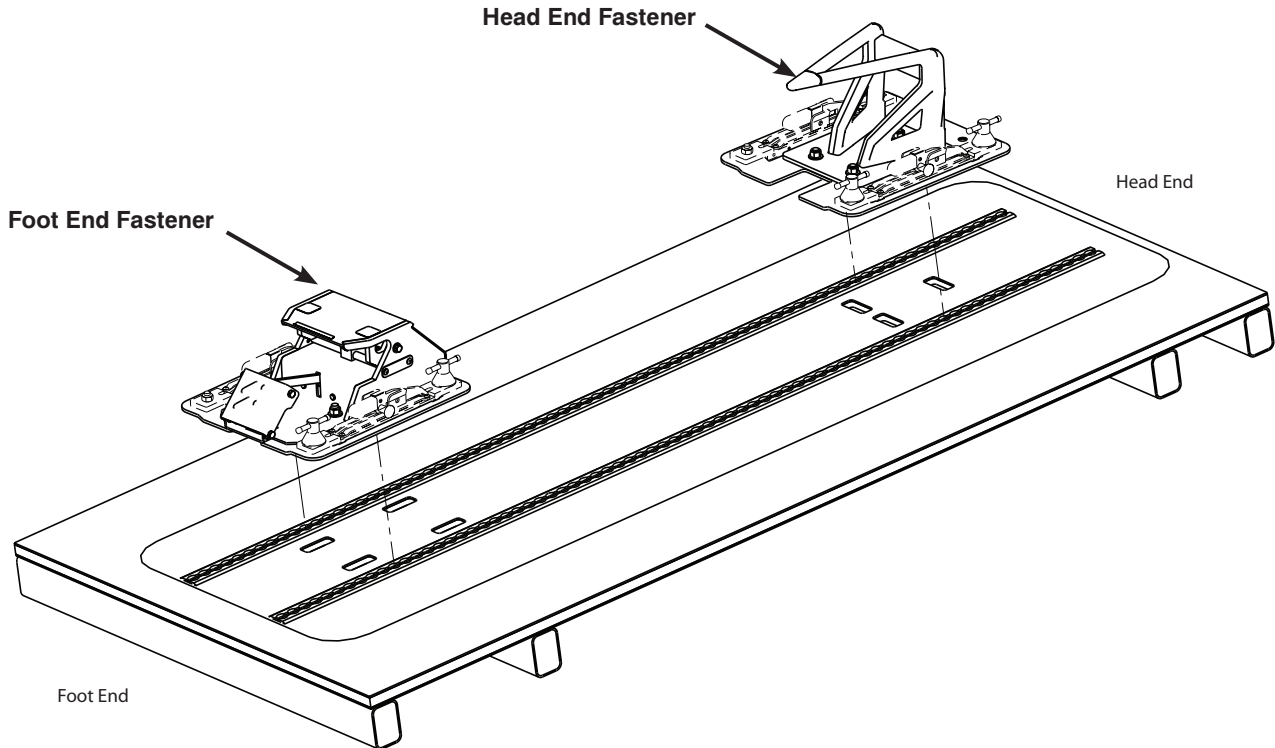


Figure 10: Head End and Foot End Fastener - Floor Track Installation

- Confirm fastener spacing as shown in Figure 11.

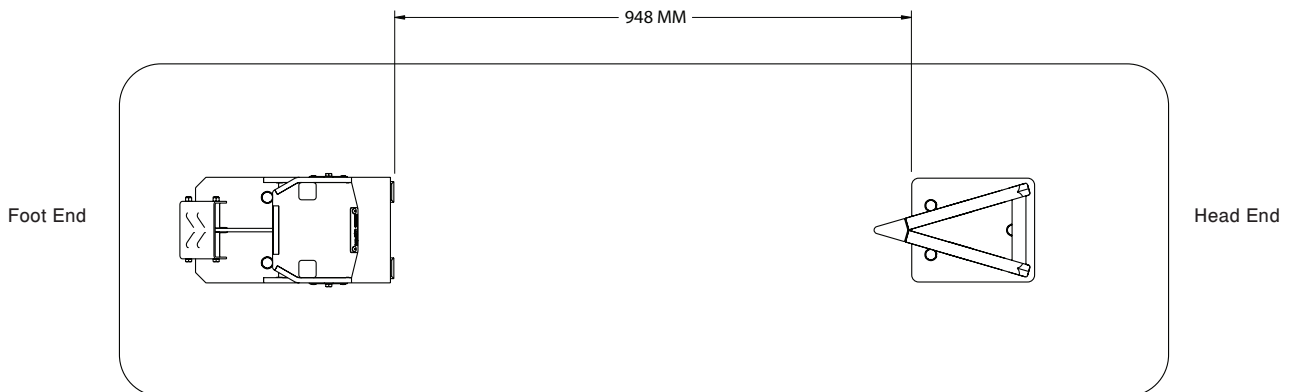


Figure 11: Fastener Spacing

- Adjust the track mounted fasteners (NMI adaptors), as needed to fit into the tracks, by loosening the two wing nuts on either side of the fastener that attach the locks to the lock down base plate.

Track Mounted Fasteners (NMI Adaptors) supplied by NMI Safety Systems.

[Return To Table of Contents](#)

Cot Fastener Installation

255MM FLOOR TRACK MOUNTING MODEL 6386 AND 6388

The Stryker Cot Fastener System for the Floor Track Mounting Model 6386 and 6388 is designed to be compatible only with cots which conform to the Floor Track Mounting Installation specifications listed below.

FLOOR TRACK INSTALLATION

1. Determine the desired position of the cot inside the vehicle allowing for proper clearance around the cot.

Note: Federal ambulance specifications regarding aisle width and attendant seating may affect positioning of the mounting brackets. If specifications do not apply, the installer should be certain there is adequate clearance for proper patient access, traction splint projection, rear door closure, etc.

2. Using the dimensions shown in Figure 12, identify where the floor tracks will attach.
3. Attach floor tracks as specified by track manufacturer.

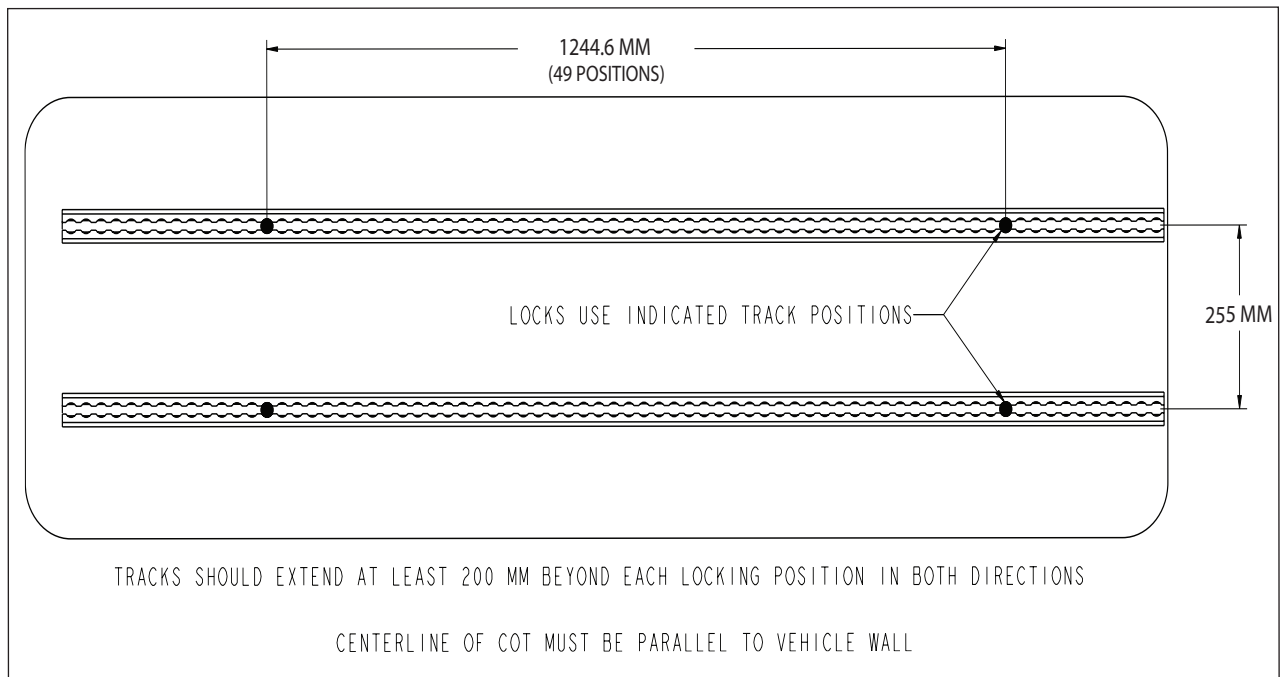


Figure 12: Floor Track Installation Locations

Cot Fastener Installation

300MM FLOOR TRACK MOUNTING MODEL 6387 AND 6389

The Stryker Cot Fastener System for the Floor Track Mounting Model 6387 and 6389 is designed to be compatible only with cots which conform to the Floor Track Mounting Installation specifications listed below.

FLOOR TRACK INSTALLATION

1. Determine the desired position of the cot inside the vehicle allowing for proper clearance around the cot.

Note: Federal ambulance specifications regarding aisle width and attendant seating may affect positioning of the mounting brackets. If specifications do not apply, the installer should be certain there is adequate clearance for proper patient access, traction splint projection, rear door closure, etc.

2. Using the dimensions shown in Figure 13, identify where the floor tracks will attach.
3. Attach floor tracks as specified by track manufacturer.

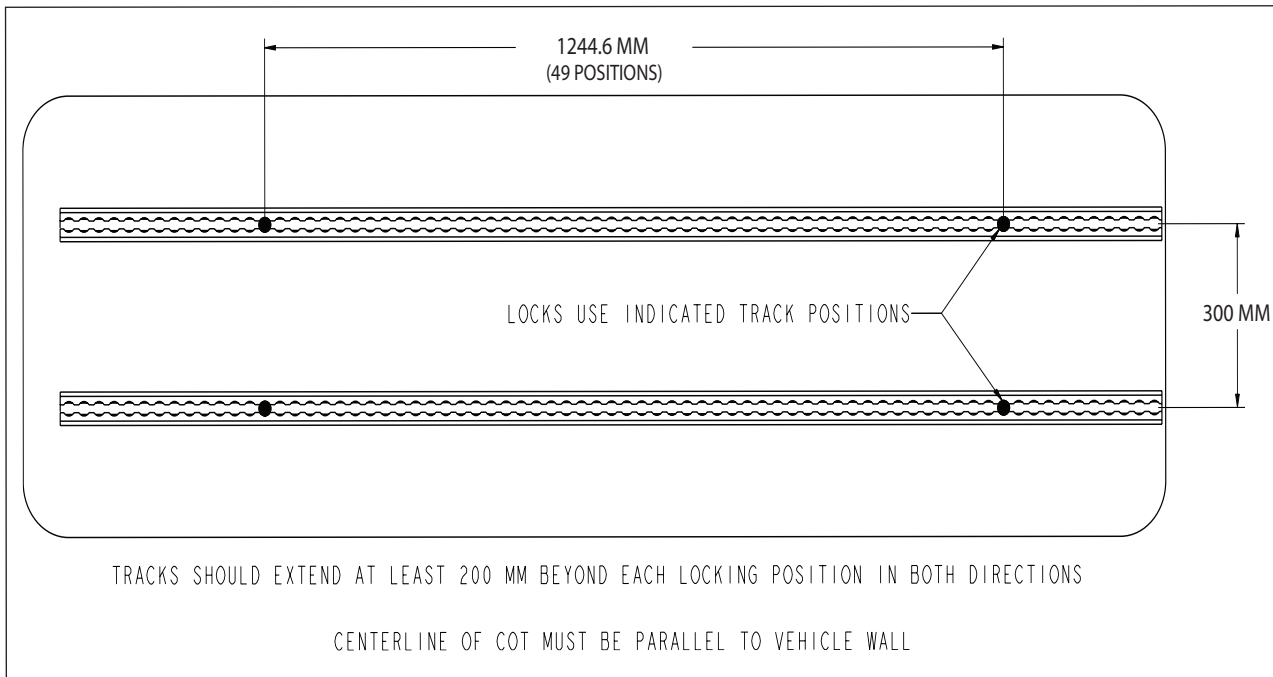


Figure 13: Floor Track Installation Locations

Operation Guide

ENGAGING THE COT INTO THE FASTENER

1. Before attempting to engage the cot into the fastener, ensure that the pedal is fully depressed and the cot is completely lowered as shown in Figure 14.

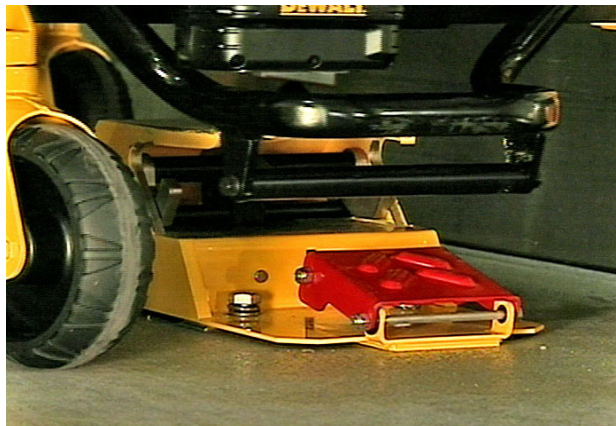


Figure 14 - Pedal fully depressed

2. Guide the cot into both the head end and foot end portions of the fastener until the locking mechanism is engaged as shown in Figure 15.



Figure 15 - Cot in Fastener - (Foot End)

3. Check to be sure the cot is securely fastened at both the head end and foot end before releasing your grip on the cot as shown in Figure 16.

CAUTION

- The unit must be in its fully down position to properly engage the cot fastener (not included).
- To ensure that the cot is in the lowest position, press the retract (-) button until the cot stops moving downward. This should be done prior to attempting to engage the cot into the cot fastener (not included).
- To reduce risk of damage to the cot or cot fastener, do not attempt to activate the cot height activation while it is engaged in the cot fastener (not included).

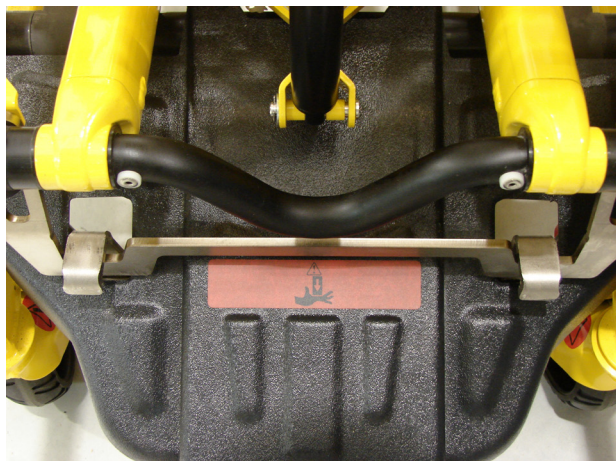


Figure 16 - Cot in Fastener (Head End)

Operation Guide

REMOVING THE COT FROM THE FASTENER

1. Press down firmly on the foot pedal until the locking mechanism disengages as shown in Figure 17.

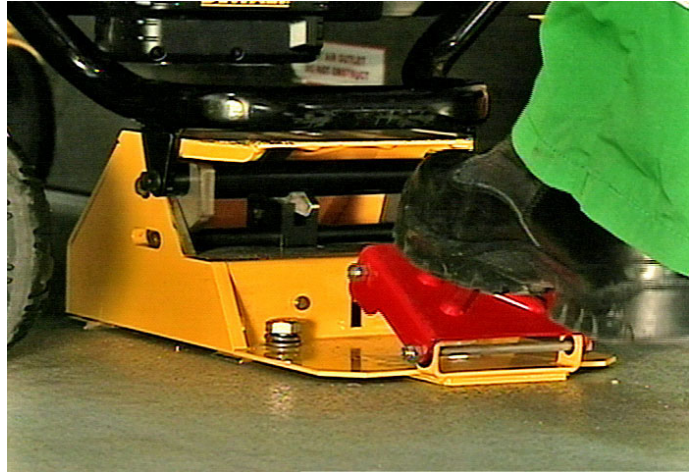


Figure 17 - Press on foot end

2. Roll the cot out of the patient compartment as shown in Figure 18.

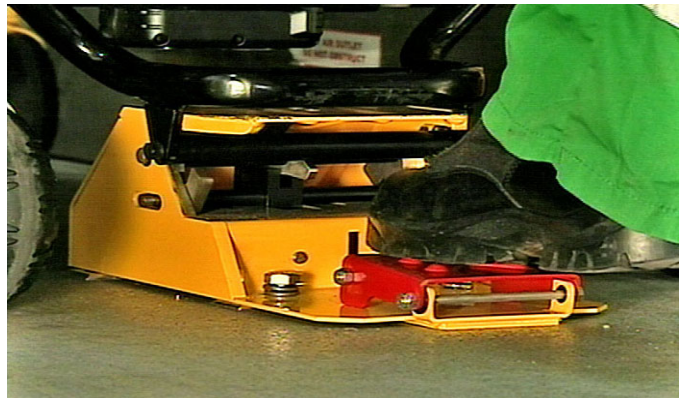


Figure 18 - Remove cot

Cleaning

In general, when used in those concentrations recommended by the manufacturer, either phenolic type or quaternary type disinfectants can be used. Iodophor type disinfectants are not recommended for use because staining may result.

Suggested cleaners for the Power-PRO TL Cot Fastener System:

- Quaternary Cleaners (active ingredient - ammonium chloride)
- Phenolic Cleaners (active ingredient - o-phenylphenol)
- Chlorinated Bleach Solution (5.25% - less than 1 part bleach to 100 parts water)

Avoid over saturation and ensure the product does not stay wet longer than the chemical manufacturer's guidelines for proper disinfecting.

WARNING

- SOME CLEANING PRODUCTS ARE CORROSIVE IN NATURE AND MAY CAUSE DAMAGE TO THE PRODUCT IF USED IMPROPERLY. If the products described above are used to clean Stryker patient care equipment, measures must be taken to insure the equipment is wiped with a cloth soaked in clean water and thoroughly dried following cleaning.
 - Failure to properly rinse and dry the equipment after cleaning may leave a corrosive residue on the surface of the equipment, possibly causing premature corrosion of critical components.
-

Note: Failure to follow the above directions when using these types of cleaners may void this product's warranty.

REMOVAL OF IODINE COMPOUNDS

Use a solution of 1/2 tablespoons Sodium Thiosulfate in a pint of warm water to clean the stained area. Clean as soon as possible after staining occurs. If stains are not immediately removed, allow solution to soak or stand on the surface. Rinse surfaces which have been exposed to the solution in clear water before returning unit to service.

Preventative Maintenance

FASTENER LUBRICATION

- Tri-Flow® with Teflon® lubricant may be used to reduce the force required to engage and disengage the cot and to minimize wear, or if the pedal does not stay down with the cot removed.
- Do not use silicone, WD-40® or lithium grease. They could harm the moving parts of the cot fastener system.

To lubricate fastener:

1. Remove the back fastener cover.
2. Spray Tri-Flow® with Teflon® lubricant (Stryker part number 6082-199-012) onto the areas indicated with arrows in Figure 19.

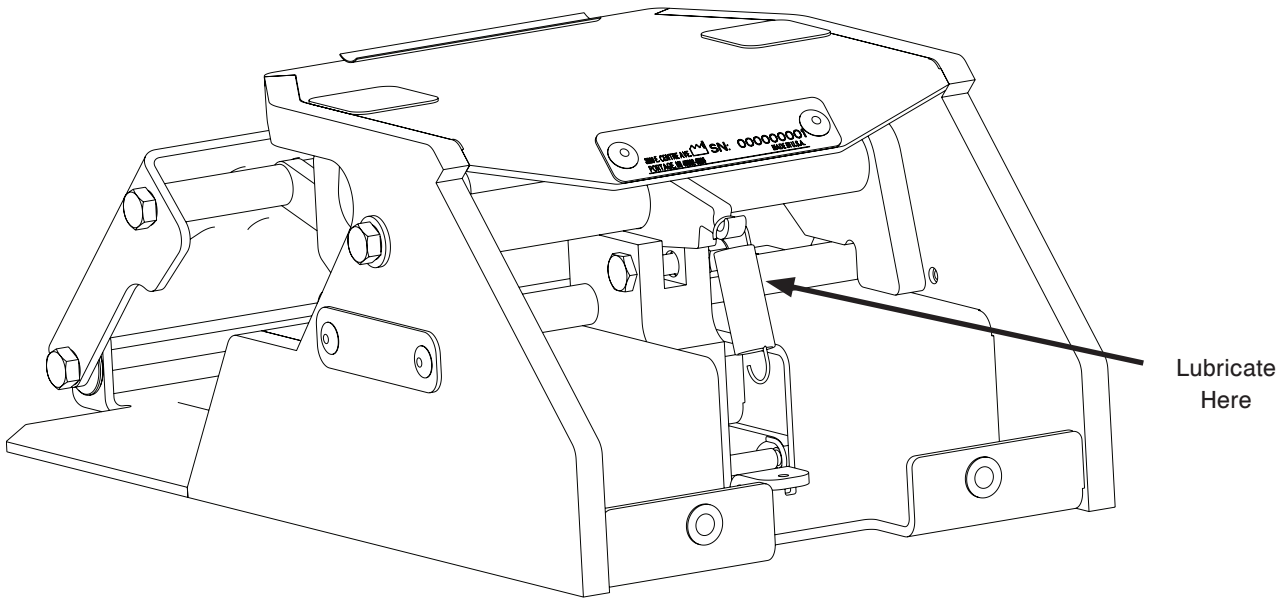


Figure 19 - Fastener Lubrication

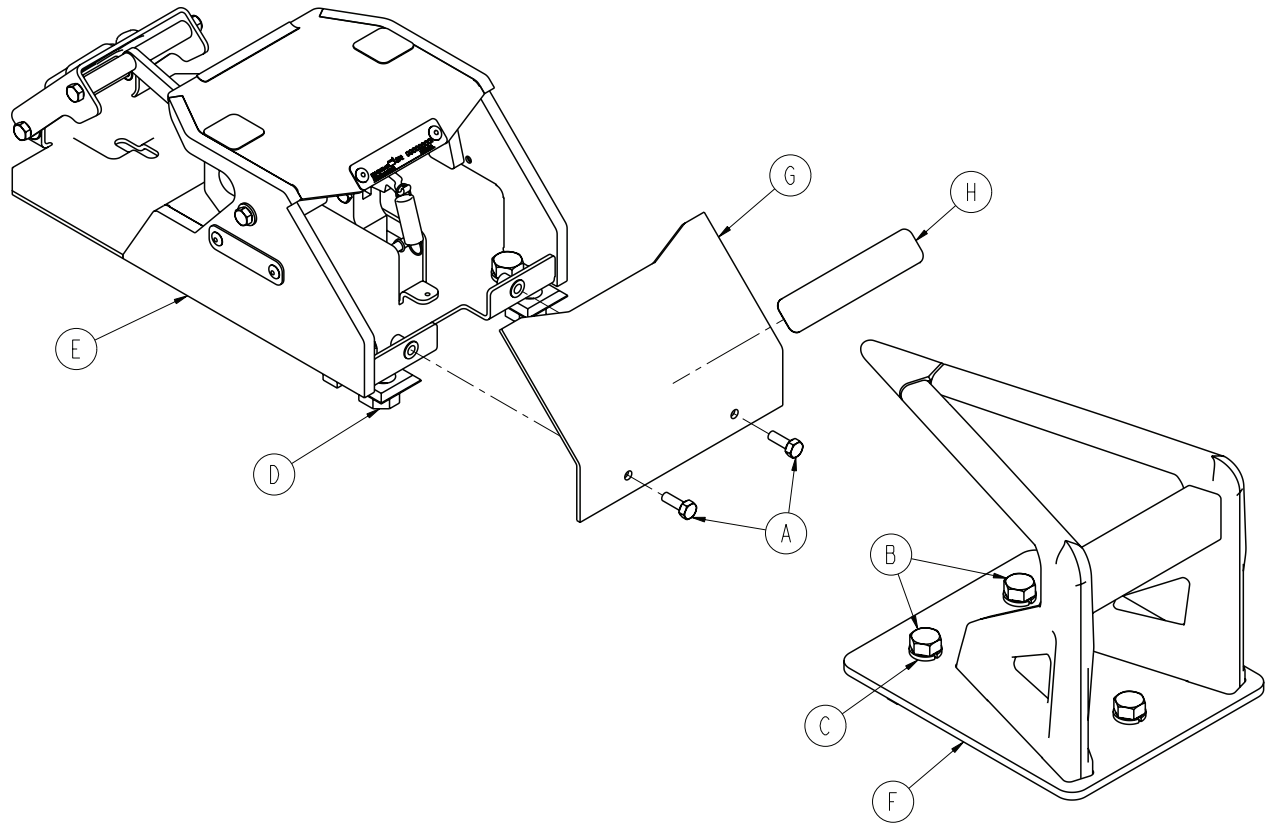
REGULAR INSPECTION AND ADJUSTMENTS

Maintenance Intervals

The following schedule is intended as a general guide to maintenance. Bear in mind that such factors as weather, terrain, geographical location, and individual usage will alter the required maintenance schedule. If you are unsure as to how to perform these checks please contact your Stryker service technician. If you are in doubt as to what intervals to follow in maintaining your product, consult your Stryker service technician.

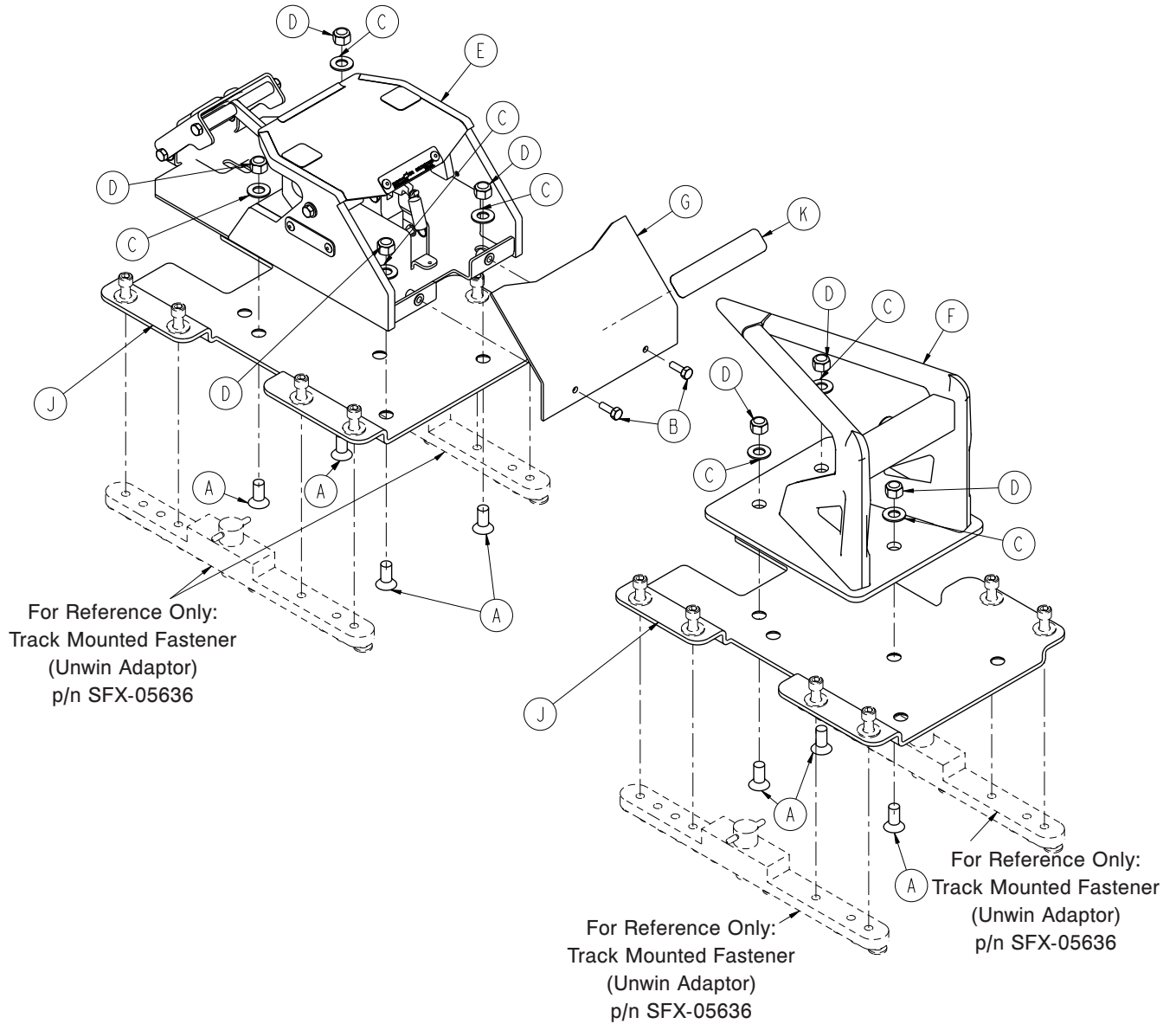
Routine	Every			
	1 Month	3 Months	6 Months	12 Months
Verify the ambulance cot and fastener fit and function properly				X
All fasteners are secure (reference all assembly drawings)		X		
Lubricate lock according to instructions provided (see above)	As needed			

Model 6385 Floor Plate Mounting Assembly - 6385-001-010



Item	Part No.	Part Name	Qty.
A	0003-109-000	Hex Head Cap Screw	2
B	0003-112-000	Hex Head Cap Screw	7
C	0012-058-001	Lock Washer	7
D	6360-030-012	Small Floor Plate	7
E	6385-001-012	Fastener Assembly, FE (page 29)	1
F	6385-001-013	Antler Weldment	1
G	6385-001-080	Back Cover	1
H	6385-001-100	Cot Fastener Specification Label	1

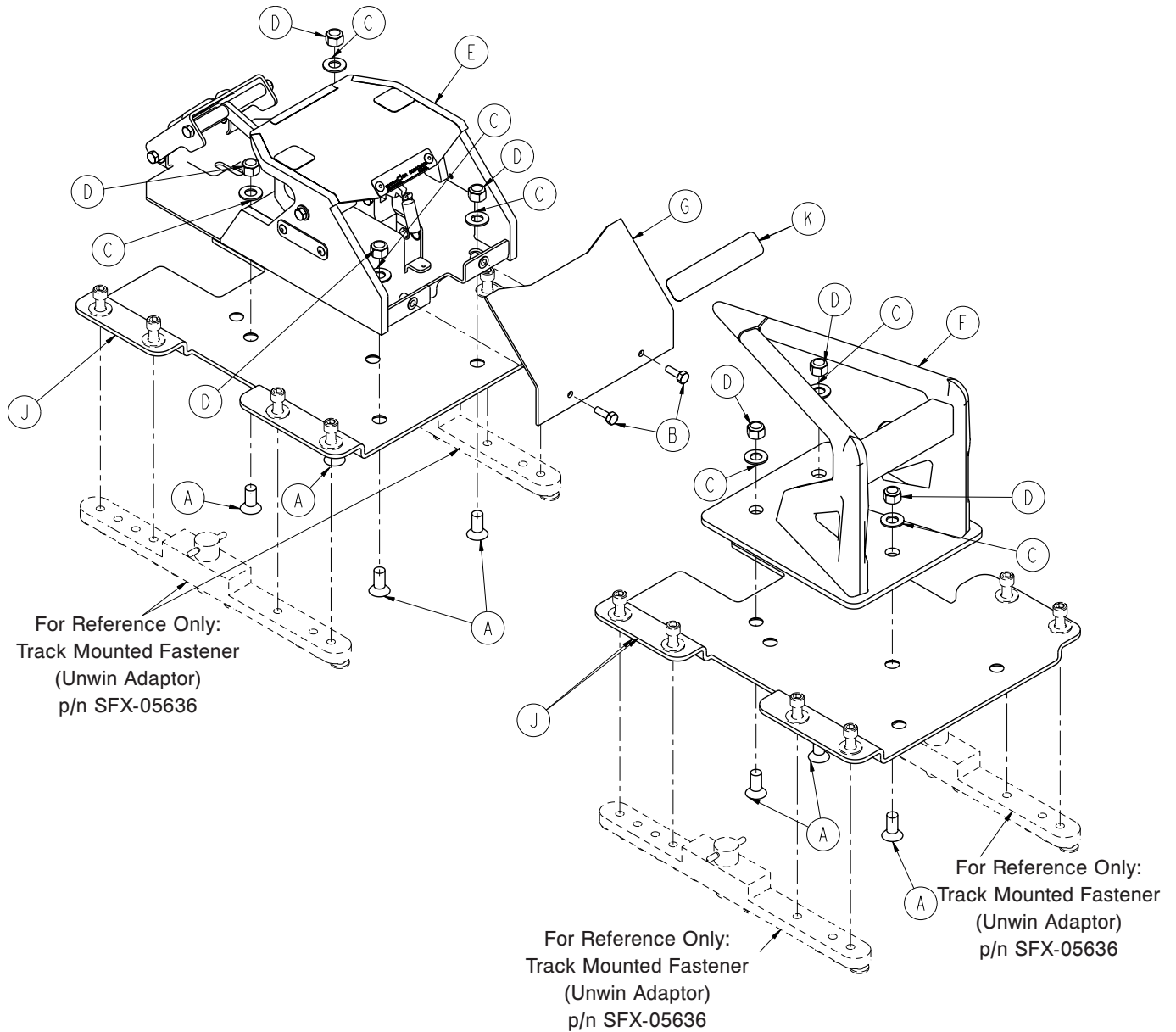
Model 6386 Floor Track Mounting Assembly - 6386-001-010



Item	Part No.	Part Name	Qty.
A	0001-184-000	Flat Head Socket Screw	7
B	0003-109-000	Hex Head Cap Screw	2
C	0011-014-000	Flat Washer	7
D	0016-401-000	Nylock Hex Nut	7
E	6385-001-012	Fastener Assembly, FE (page 29)	1
F	6385-001-013	Antler Assembly	1
G	6385-001-080	Back Cover	1
J	6385-001-106	Lock Down Base Plate	2
K	6386-001-100	Cot Fastener Specification Label	1

Note: Track mounted fastener (Unwin adaptor) supplied by Unwin Safety Systems.

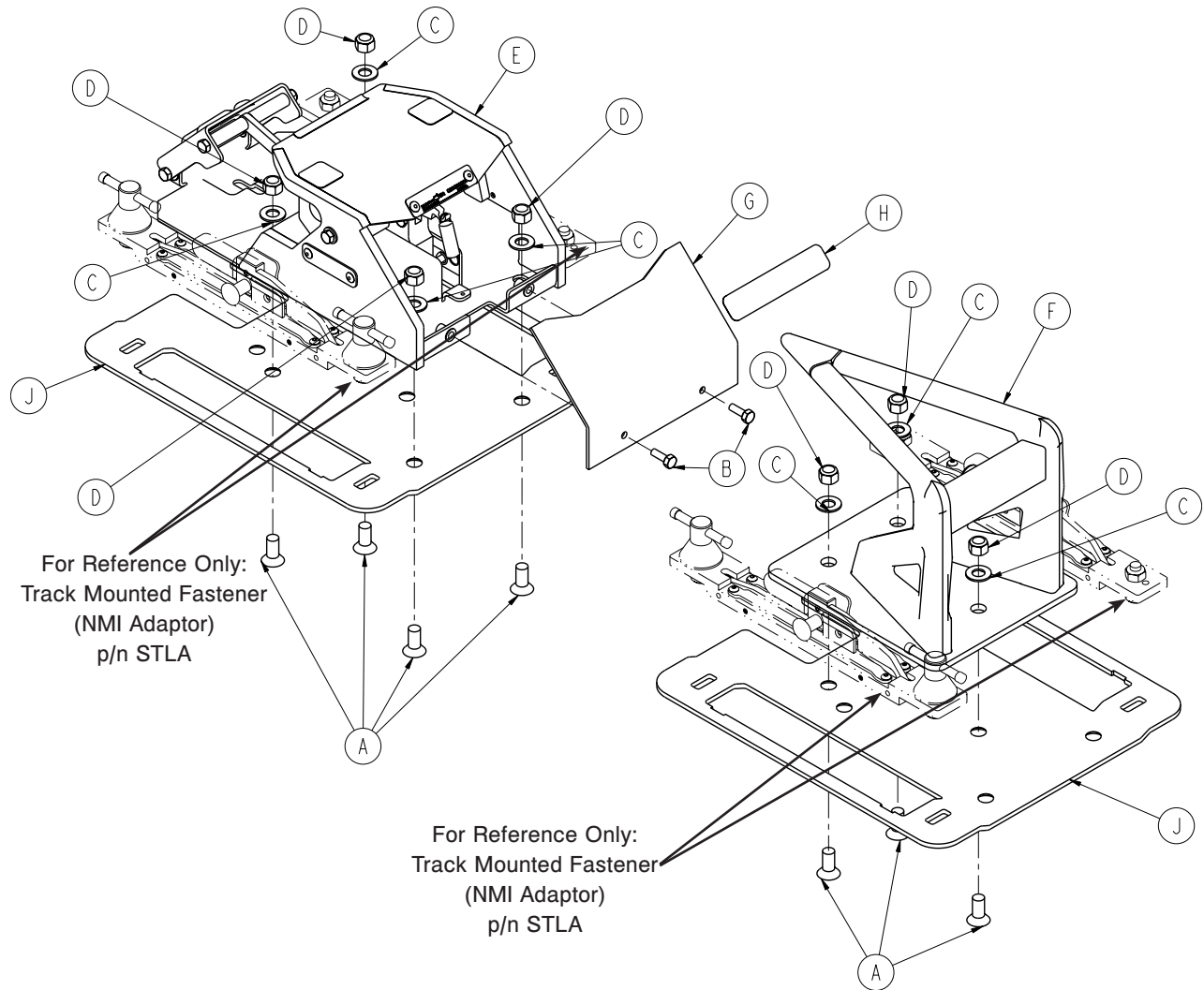
Model 6387 Floor Track Mounting Assembly - 6387-001-010



Item	Part No.	Part Name	Qty.
A	0001-184-000	Flat Head Socket Screw	7
B	0003-109-000	Hex Head Cap Screw	2
C	0011-014-000	Flat Washer	7
D	0016-401-000	Nylock Hex Nut	7
E	6385-001-012	Fastener Assembly, FE (page 29)	1
F	6385-001-013	Antler Assembly	1
G	6385-001-080	Back Cover	1
J	6385-001-107	Lock Down Base Plate	2
K	6387-001-100	Cot Fastener Specification Label	1

Note: Track mounted fastener (Unwin adaptor) supplied by Unwin Safety Systems.

Model 6388 Floor Track Mounting Assembly - 6388-001-010



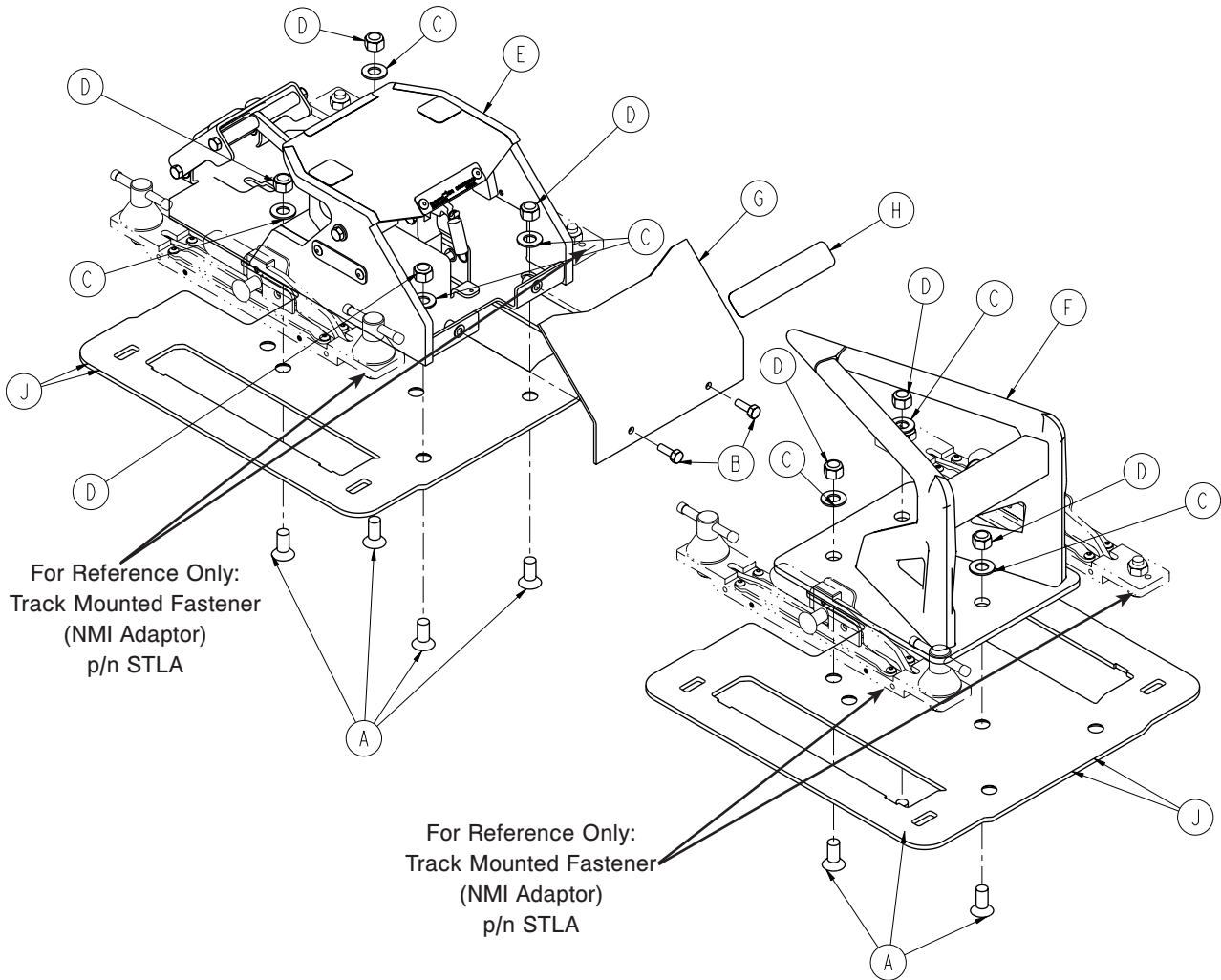
Item	Part No.	Part Name	Qty.
A	0001-184-000	Flat Head Socket Screw	7
B	0003-109-000	Hex Head Cap Screw	2
C	0011-014-000	Flat Washer	7
D	0016-401-000	Nylock Hex Nut	7
E	6385-001-012	Fastener Assembly, FE (page 29)	1
F	6385-001-013	Antler Assembly	1
G	6385-001-080	Back Cover	1
H	6388-001-100	Cot Fastener Specification Label	1
J	6388-001-106	Lock Down Base Plate	2
K	6388-001-080	Lock Down Washer (not shown)	8

Note:

- Use lock down washers to secure the floor track mounting assembly.
- Track mounted fastener (NMI adaptor) supplied by NMI Safety Systems.

[Return To Table of Contents](#)

Model 6389 Floor Track Mounting Assembly - 6389-001-010

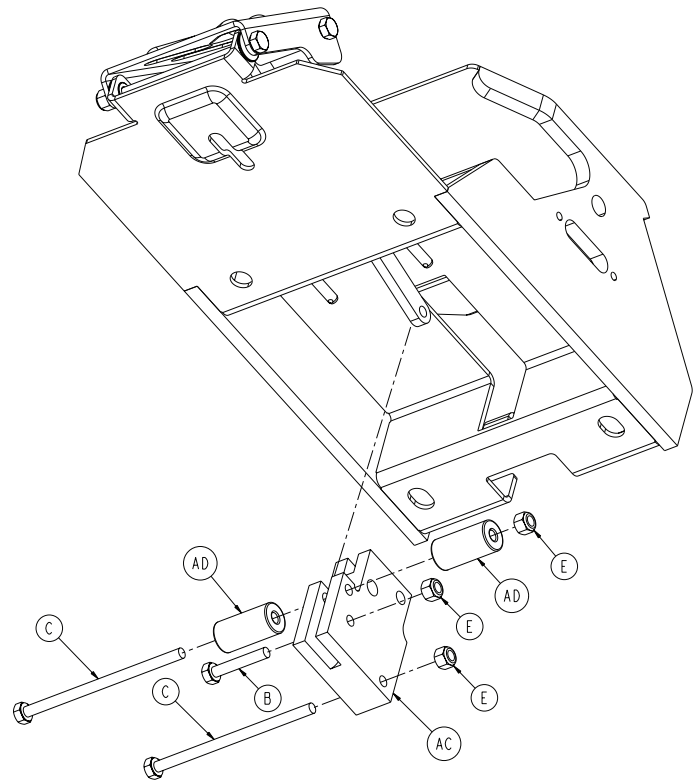
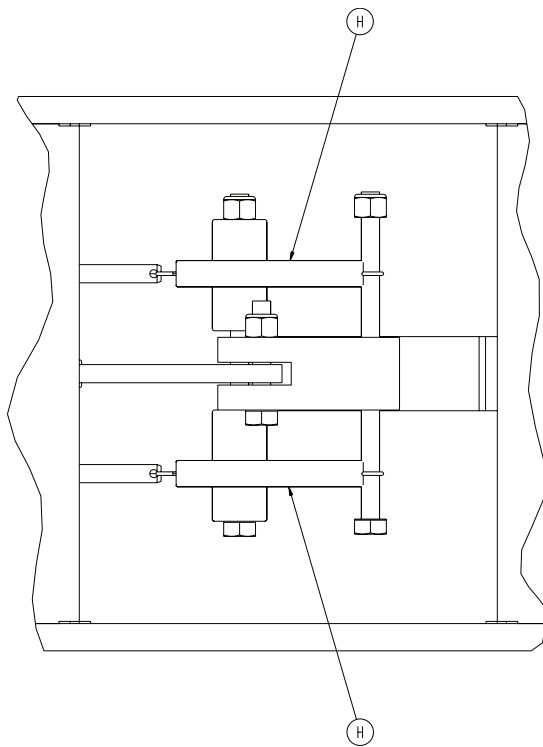
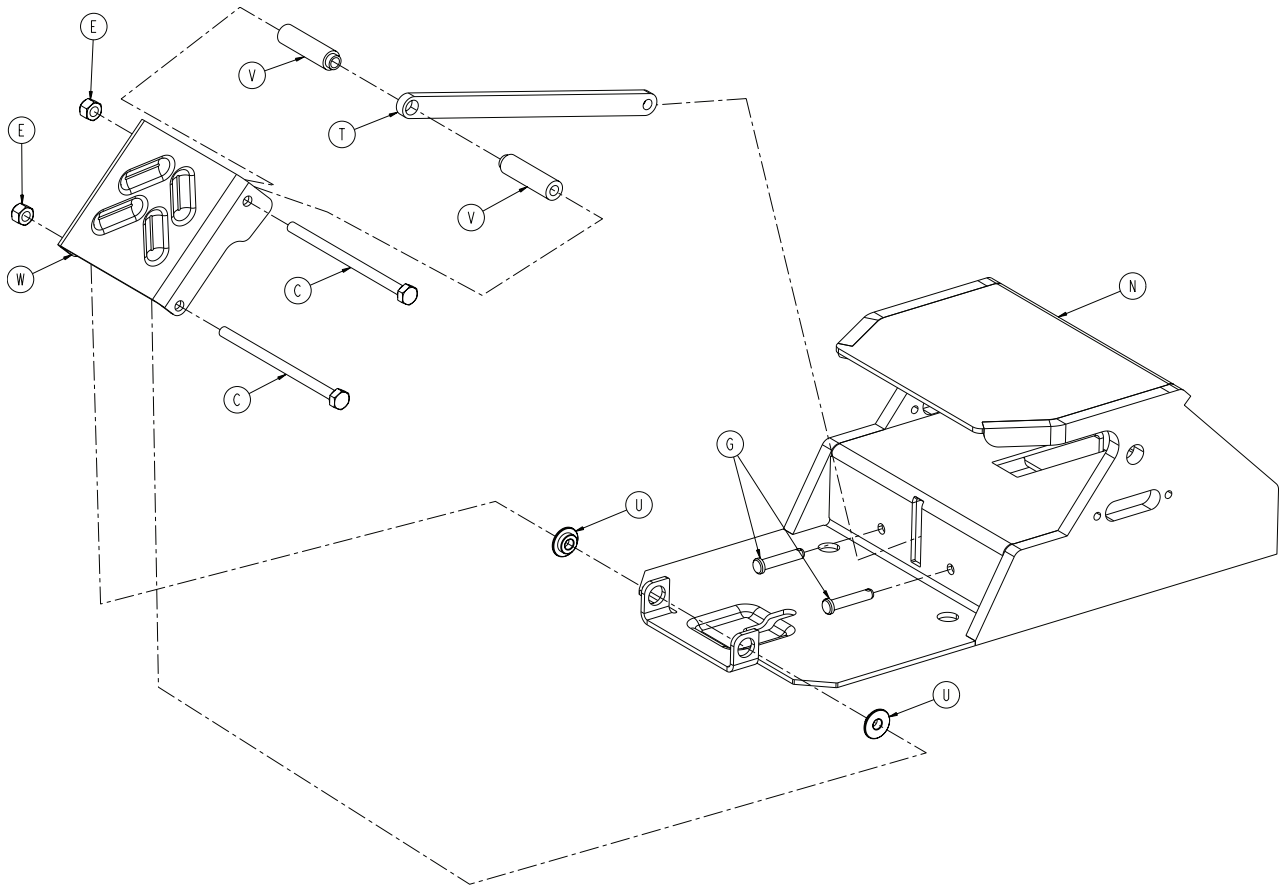


Item	Part No.	Part Name	Qty.
A	0001-184-000	Flat Head Socket Screw	7
B	0003-109-000	Hex Head Cap Screw	2
C	0011-014-000	Flat Washer	7
D	0016-401-000	Nylock Hex Nut	7
E	6385-001-012	Fastener Assembly, FE (page 29)	1
F	6385-001-013	Antler Assembly	1
G	6385-001-080	Back Cover	1
H	6388-001-100	Cot Fastener Specification Label	1
J	6388-001-107	Lock Down Base Plate	2
K	6388-001-080	Lock Down Washer	8

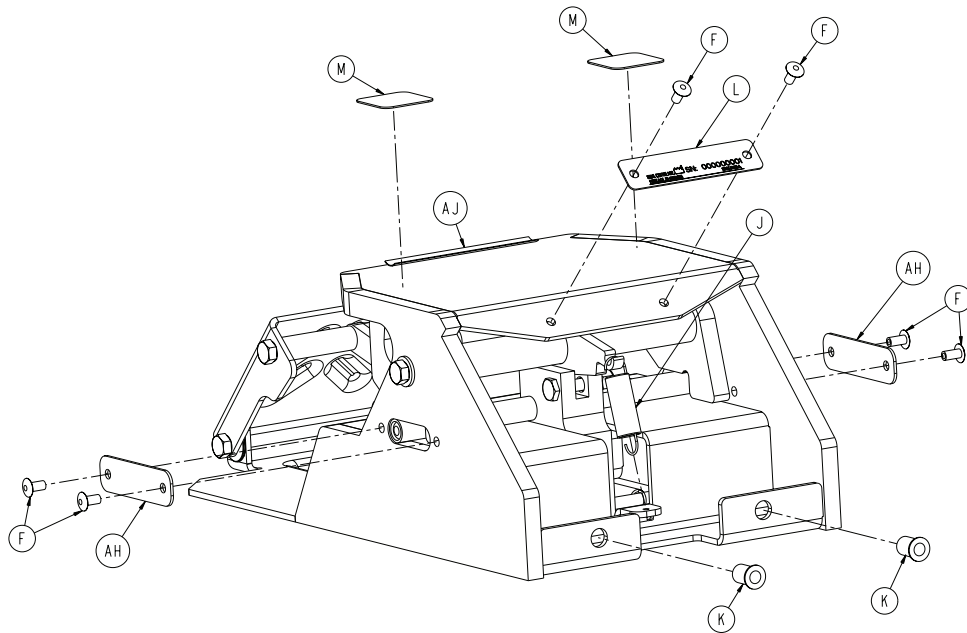
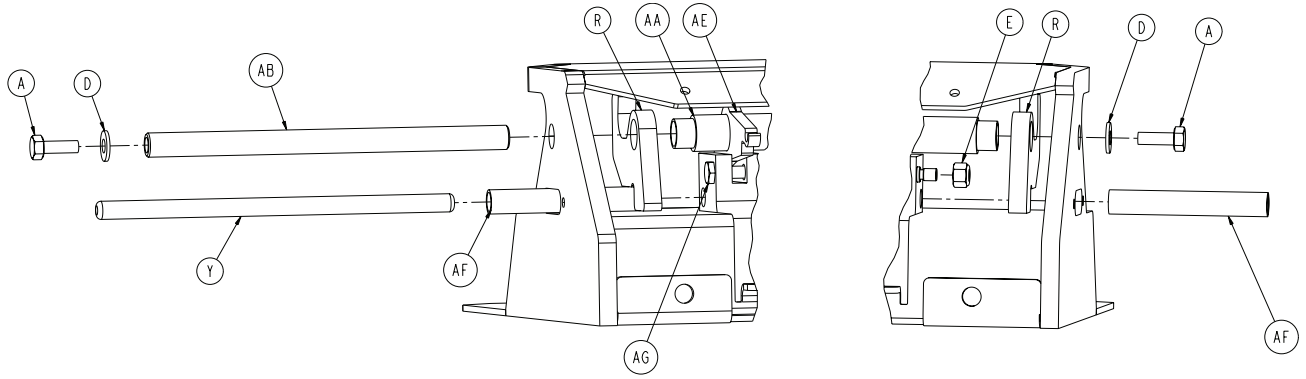
Note:

- Use lock down washers to secure the floor track mounting assembly.
- Track mounted fastener (NMI adaptor) supplied by NMI Safety Systems.

Fastener Assembly, Foot End - 6385-001-012



Fastener Assembly, Foot End - 6385-001-012



Fastener Assembly, Foot End - 6385-001-012

Item	Part No.	Part Name	Qty.
A	0003-109-000	Hex Head Cap Screw	2
B	0003-113-000	Hex Head Cap Screw	1
C	0003-390-000	Hex Head Cap Screw	4
D	0011-077-000	Washer	2
E	0016-028-000	Fiberlock Hex Nut	6
F	0025-079-000	Rivet	6
G	0026-386-000	Clevis Pin	2
H	0038-590-000	Extension Spring	2
J	0038-591-000	Extension Spring	1
K	0055-100-076	1/4-20 Riv Nut	2
L	6060-090-002	Serial Number Tag	1
M	6060-090-114	Warning Label	2
N	6385-001-050	Plate, Bottom, Weldment	1
R	6385-001-082	Inside Hook	2
T	6385-001-085	Main Link	1
U	6385-001-086	Flange Bearing	2
V	6385-001-087	Pedal Spacer	2
W	6385-001-088	Pedal	1
Y	6385-001-090	Main Rod	1
AA	6385-001-091	Rod Spacer	1
AB	6385-001-092	Top Rod	1
AC	6385-001-093	Bottom Slide	1
AD	6385-001-094	Bottom Roller	2
AE	6385-001-095	Link Stop	1
AF	6385-001-097	Slide Bushing	2
AG	6385-001-098	Lock Pin	1
AH	6385-001-099	Slot Cover	2
AJ	6080-090-023	Label	1

Quick Reference Replacement Parts List

The parts and accessories listed on this page are all currently available for purchase. Some of the parts identified on the assembly drawing parts in this manual may not be individually available for purchase. Please call Stryker Customer Service at +44 (0) 1635 262431 for availability and pricing.

Part Name	Part Number
Floor Plate Mounting Assembly (Model 6385)	
• Hex Head Cap Screw	0003-112-000
• Lock Washer	0012-058-001
• Small Floor Plate	6360-030-012
Floor Track Mounting Assembly (Model 6386, 6387, 6388, and 6389)	
• Track Mounted Fastener (Unwin Adaptor) (Model 6386 and 6387) Note: Track Mounted Fasteners (Unwin Adaptors) supplied by Unwin Safety Systems.	SFX-05636
• Track Mounted Fastener (NMI Adaptor) (Model 6388 and 6389 only) Note: Track Mounted Fasteners (NMI Adaptors) supplied by NMI Safety Systems.	STLA
• Lock Down Washer (for NMI Adaptor)	6388-001-080
• Flat Head Socket Screw	0001-184-000
• Flat Washer	0011-014-000
• Nylock Hex Nut	0016-401-000
• Lock Down Base Plate (Model 6386)	6385-001-106
• Lock Down Base Plate (Model 6387)	6385-001-107
• Lock Down Base Plate (Model 6388)	6388-001-106
• Lock Down Base Plate (Model 6389)	6388-001-107
Foot End Fastener Assembly	6385-001-012
Tri-Flow® with Teflon® Lubricant	6082-199-012

STRYKER UK LIMITED
Hambridge Rd.
Newbury, Berkshire
RG14 5EG, England

UNITED STATES
Stryker Medical
3800 E. Centre Ave.,
Portage, Michigan USA
49002

EC	REP
----	-----

European Representative
Stryker France
ZAC Satolas Green Pusignan
Av. De Satolas Green
69881 MEYZIEU Cedex
France

stryker[®]