

**stryker<sup>®</sup>**  
**Medical**

---

---

*LY1005/3300-000-005*

*LY1007/3300-000-007*

---

*Operations/Maintenance Manual*

*For Parts or Technical Assistance*  
*800-327-0770*

---

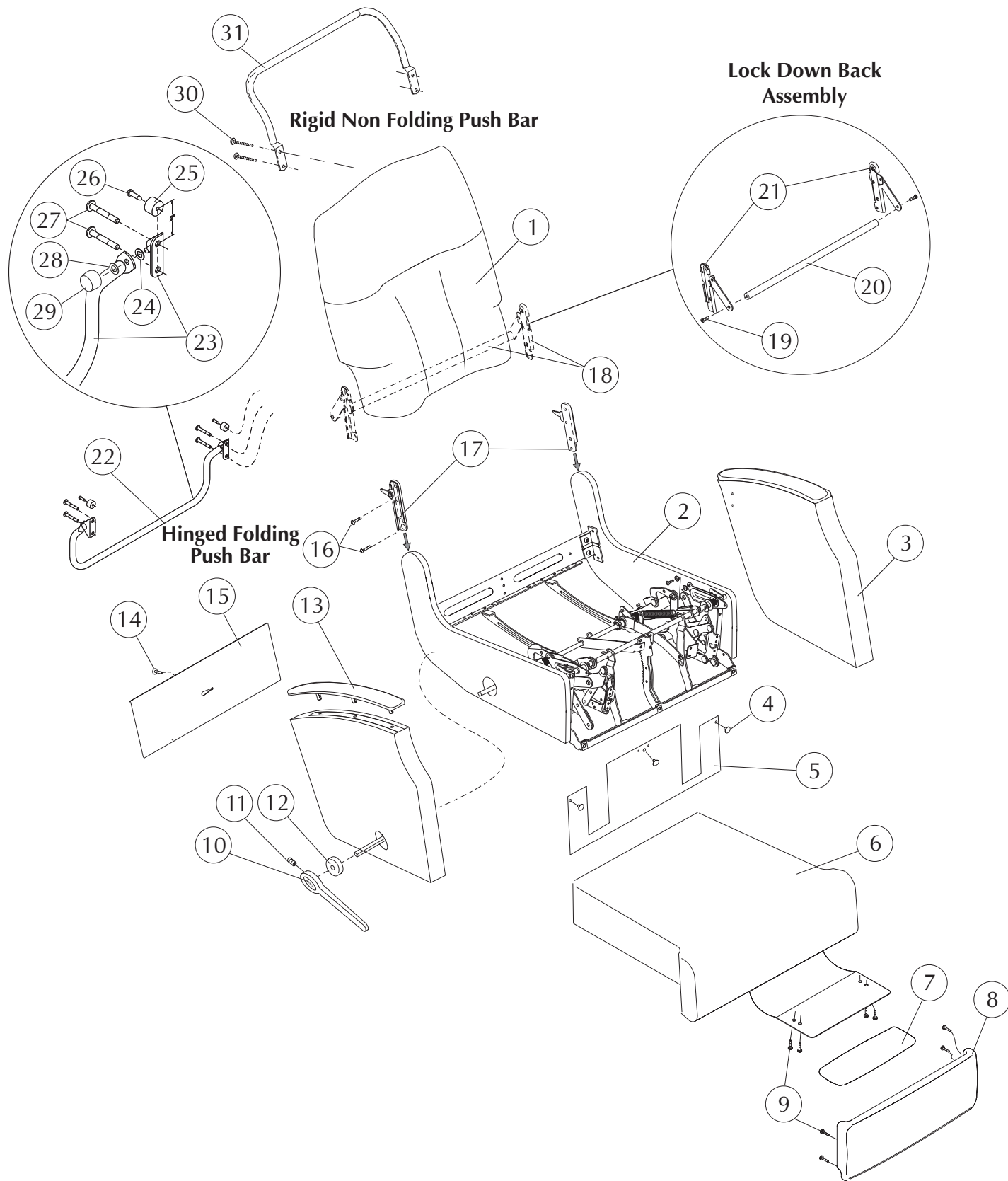
***LY1005/3300-000-005***

***LY1007/3300-000-007***

---

## **Table of Contents**

Style LY1005 & LY1007	2-3
Drive Rod Assembly (before 1/05/04)	4-5
Drive Rod Assembly (after 1/05/04)	6-7
Support Shaft Assembly	8-9
Support Shaft/Drive Rod Assembly (before 1/05/04)	10-11
Support Shaft/Drive Rod Assembly (after 1/05/04)	12-13
Seat Mechanism	14-15
Base Assembly	16-17
Mechanism Assembly	18-19
Assembly Instruction(Replacing Mobile Base)	20-23
Specifications LY 1005	24
Specifications LY 1007	25
General Information	26-27
Rear IV Pole Mounting Kit Instructions	
Lock Down Back Assembly Instructions	
Push Bar Assembly Instructions	
Side Tray Assembly Instructions	



STYLE LY1005/3300-000-005 = STATIONARY MEDICAL RECLINER  
 LY1007/3300-000-007 = MOBILE MEDICAL RECLINER

**STRYKER MEDICAL RECLINERS**

Note: When replacing parts, specify style and acknowledgment numbers.

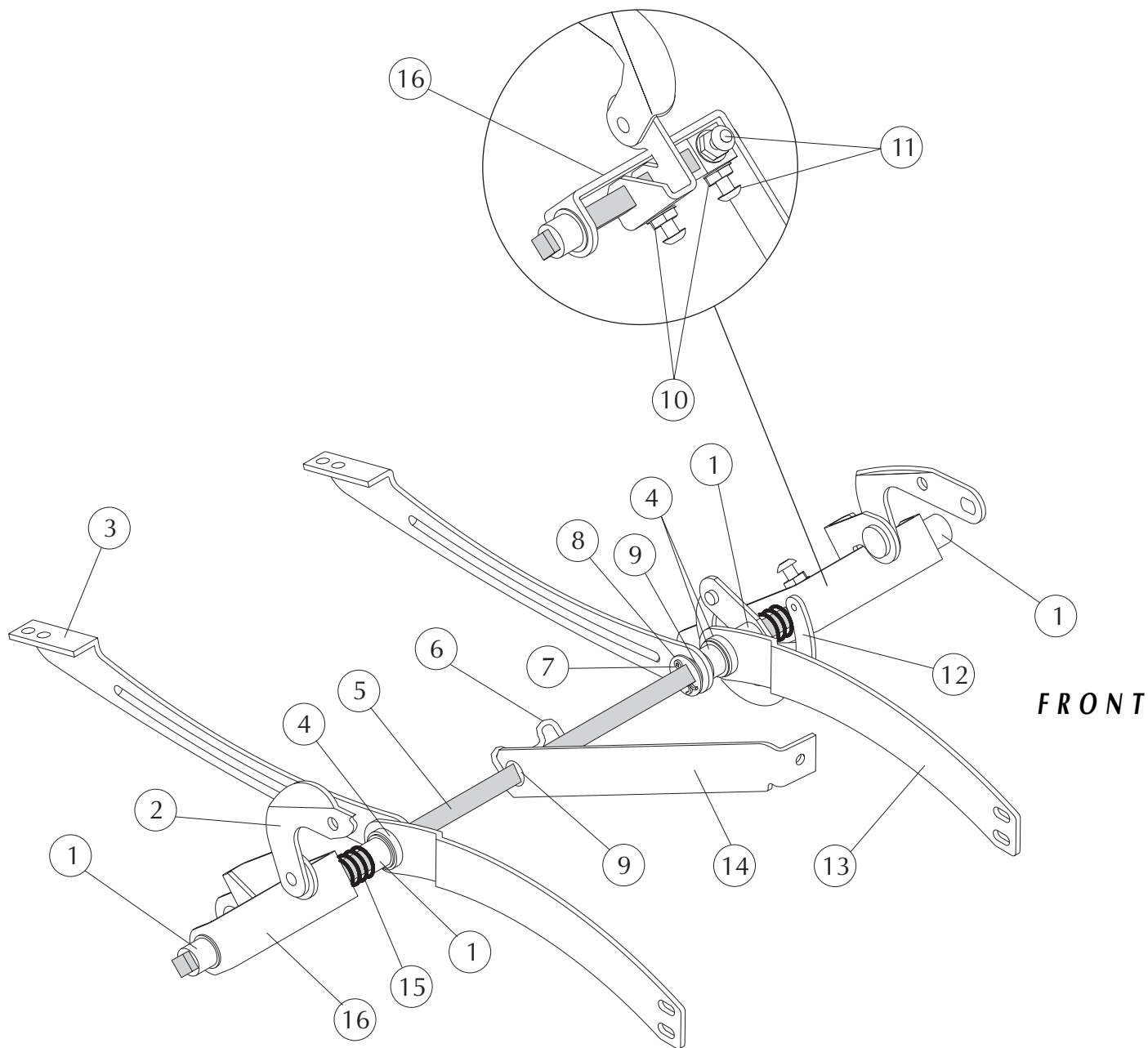
<b>DETAIL#</b>	<b>SYK PN</b>	<b>LZB PN</b>	<b>DESCRIPTION</b>	<b>QUANTITY</b>
1	3309-043-404	11990434-04**	Back Upholstered plus 2 yd cover required (LY1005)	1
	3309-043-405	11990434-05**	Back Upholstered plus 2 yd cover required (LY1007)	1
2	3309-056-000	11990560-00**	Inner Body Upholstered plus 2 yd cover required	1
3	3309-774-100	11990741-00L	Outer Arm Upholstered plus 2 yd cover required	1
	3309-974-100	11990741-00R	Outer Arm Upholstered plus 2 yd cover required	1
4	3300-028-701	95000287-01	X-mas Tree Fastener, Black	3
5	3308-002-316	10980023-16**	Front Skirt Sewn (Part of Detail #2)	1
6	3309-137-805	11991378-05**	Seat Upholstered plus 2 yd cover required	1
7	3309-000-601	94990006-01**	Mid Ottoman Upholstered	1
8	3309-043-600	11990436-00**	Leg Rest Upholstered plus 1 yd cover required	1
9	3300-001-702	96000017-02	10-24 x 3/4" Torx Pan Head Screw	8
10	3309-900-102	95990001-02R	Handle Finished, Right	1
11	3300-036-200	96000362-00	3/8-16 x 1/2" Set Screw	1
12	3309-000-701	94990007-01**	Escutcheon Upholstered	1
13	3309-774-201	11990742-01L*	Top Arm Finished; (Part of Detail #3) (Standard)	1
	3309-974-201	11990742-01R*	Top Arm Finished; (Part of Detail #3) (Standard)	1
	3309-774-301	11990743-01L**	Top Arm Upholstered plus 1 yd cover required (Option)	1
	3309-974-301	11990743-01R**	Top Arm Upholstered plus 1 yd cover required (Option)	1
14	3300-040-900	95000409-00	X-mas Tree Fastener, Black	1
15	3308-000-338	10980003-38**	Tailgate Sewn	1
16	3300-001-303	96000013-03	1/4-20 x 1 1/4" Torx Flat Head Screw (end date 10/30/04)	4
17	3307-907-000	92970070-00R	Back Bracket Subassembly (end date 10/30/04)	1
	3307-707-000	92970070-00L	Back Bracket Subassembly (end date 10/30/04)	1
18	3307-001-303	KIT70013-03	Lock Down Back Assembly Kit, (Standard)	1
19	3300-001-301	96000013-01	1/4-20 x 3/4" Torx Flat Head Screw, (part of det. #18)	2
20	3300-048-800	62000488-00	Lock Bar, Standard, (part of det. #18)	1
21	3307-907-900	92970079-00R	Lock Down Back Assembly, Standard, (part of det. #18)	1
	3307-707-900	92970079-00L	Lock Down Back Assembly, Standard, (part of det. #18)	1
	3303-000-501	94000005-01	Black Elastic Straps (not shown) (pt of det. #18)	2
22	3307-001-604	KIT70016-04	Hinged Folding Push Bar Assembly, LY1007 only (Standard)	1
23	3307-050-403	62970504-03	Push Bar/Hinge Subassembly (pt. of det. #22)	1
24	3300-007-100	96000071-00	Nylon Washer (pt. of det. #22)	2
25	3300-027-300	65000273-00	Recessed Bumper (pt. of det. #22)	2
26	3300-020-001	96000200-01	#10-18 x 3/4" Phillips Head Screw (pt. of det. #22)	2
27	3300-002-413	96000024-13	1/4-20 x 2" Torx Head Screw (pt. of det. #22)	4
28	3300-029-200	65000292-00	Rubber Washer (pt. of det. #22)	2
29	3300-029-000	65000290-00	Decorative Cap Nut (pt. of det. #22)	2
30	3300-002-413	96000024-13	1/4-20 x 2" Torx Truss Head Screw, (Option)	4
31	3300-018-201	62000182-01	Rigid Non Folding Push Bar, LY1007 only, (Option)	1

\* Indicate finish or color when ordering

\*\* Indicate fabric cover number when ordering

**DRIVE ROD ASSEMBLY**

FOR STYLES PRODUCED BEFORE 1/05/04



STYLE LY1005/3300-000-005 = STATIONARY MEDICAL RECLINER  
LY1007/3300-000-007 = MOBILE MEDICAL RECLINER

**STRYKER MEDICAL RECLINERS  
DRIVE ROD ASSEMBLY**

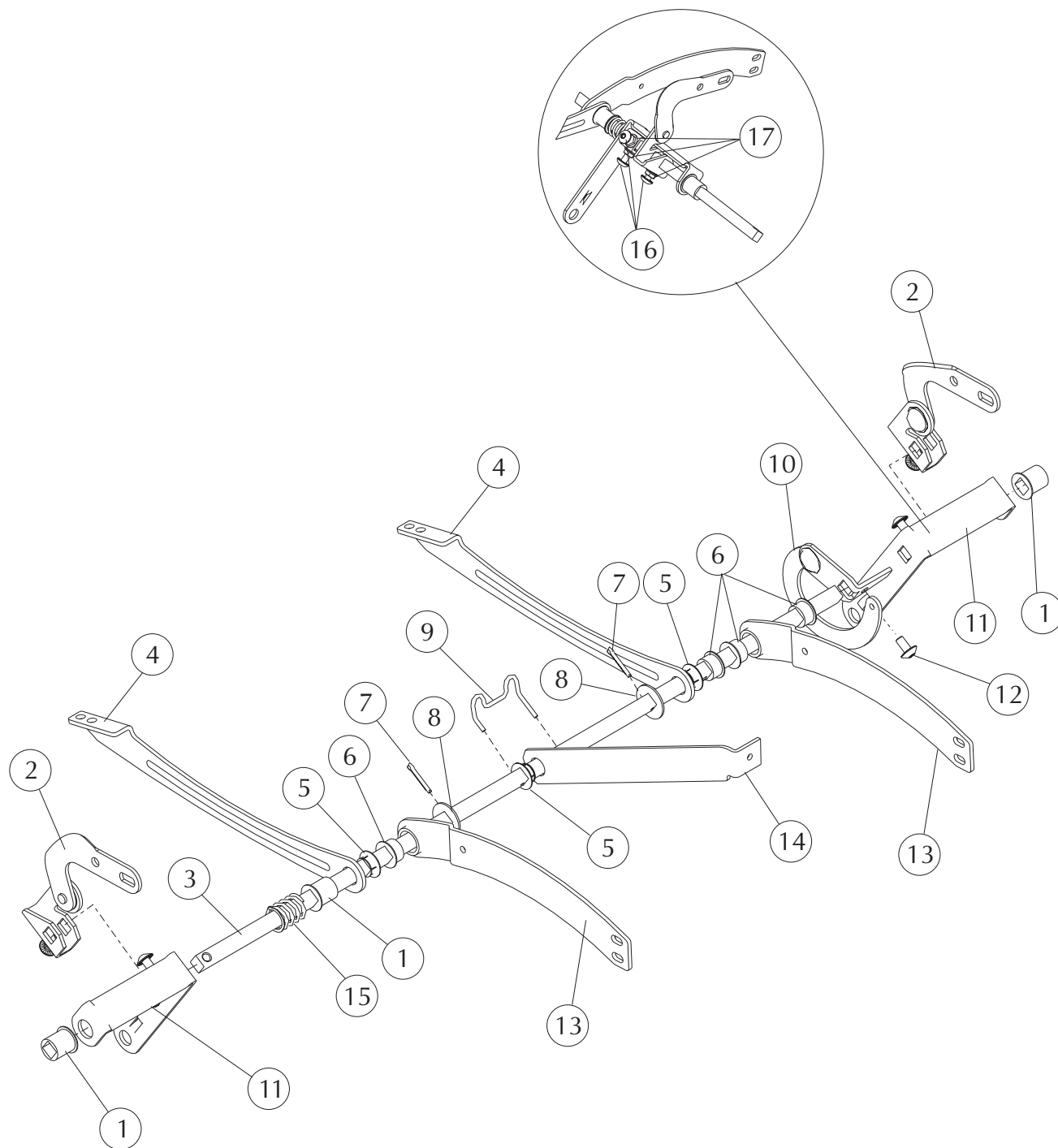
FOR STYLES PRODUCED BEFORE 1/05/04

Note: When replacing parts, specify style and acknowledgment numbers.

<b>DETAIL#</b>	<b>SYK PN</b>	<b>LZB PN</b>	<b>DESCRIPTION</b>	<b>QUANTITY</b>
1	3300-012-300	95000123-00	25/32" Bearing, Large	4
2	3307-724-400	12970244-00L	Tilt Toggle Subassembly	1
	3307-924-400	12970244-00R	Tilt Toggle Subassembly	1
3	3300-027-800	72000278-00	Drive Shaft Support Rear	2
4	3300-000-200	35000002-00	Bearing, Small	3
5	3300-022-402	12000224-02	Drive Rod	1
6	3300-012-600	12000126-00	Retaining Ring Spacer	1
7	3300-004-102	96000041-02	Cotter Pin	2
8	3300-012-500	95000125-00	Washer - Drive Rod	1
9	3300-105-800	15001058-00	Nylon Bearing	3
10	3300-031-900	96000319-00	1/4-20 Flange Nut	6
11	3300-007-607	96000076-07	1/4-20 x 3/4" Serrated Truss Head Screw	6
12	3307-004-600	42970046-00	Toggle Subassembly	1
13	3300-026-900	72000269-00	Drive Shaft Support	2
14	3300-914-700	12000147-00R	Spacing Link	1
15	3300-016-500	92000165-00	Spring - Drive Rod	2
16	3307-029-100	12970291-00	Rear Swing Subassembly	2

**DRIVE ROD ASSEMBLY**

FOR STYLES PRODUCED AFTER 1/05/04



STYLE LY1005/3300-000-005 = STATIONARY MEDICAL RECLINER  
LY1007/3300-000-007 = MOBILE MEDICAL RECLINER

**STRYKER MEDICAL RECLINERS**

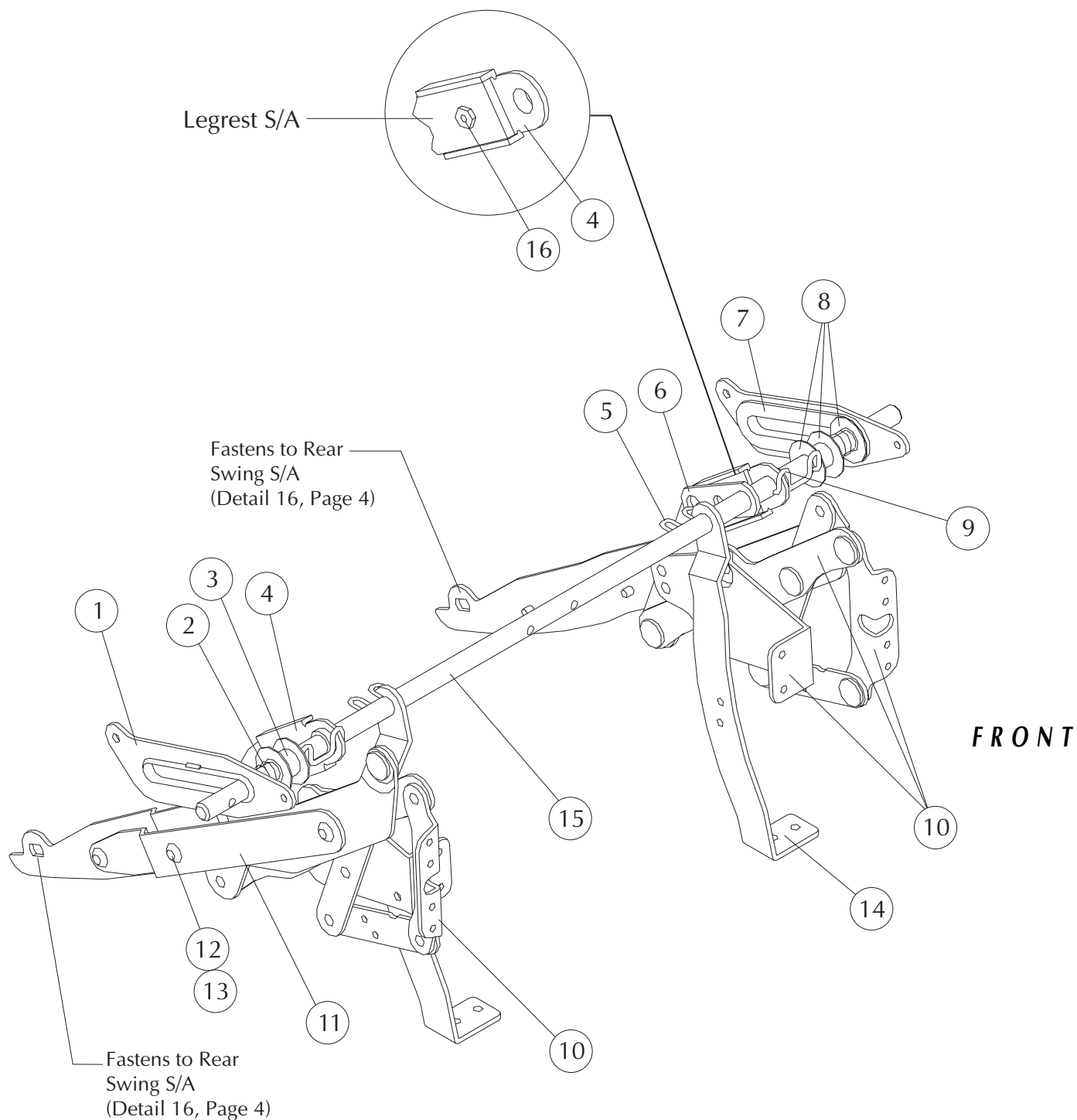
FOR STYLES PRODUCED AFTER 1/05/04

Note: When replacing parts, specify style and acknowledgment numbers.

<b>DETAIL#</b>	<b>SYK PN</b>	<b>LZB PN</b>	<b>DESCRIPTION</b>	<b>QUANTITY</b>
1	3300-012-300	95000123-00	<sup>25</sup> / <sub>32</sub> " Bearing, Large	3
2	3307-724-400	12970244-00L	Tilt Toggle Subassembly	1
	3307-924-400	12970244-00R	Tilt Toggle Subassembly	1
3	3300-064-401	62000644-01	Drive Rod	1
4	3300-027-800	72000278-00	Drive Shaft Support Rear	2
5	3300-105-800	15001058-00	Nylon Bushing	3
6	3300-000-200	35000002-00	Bearing, Small	4
7	3300-004-102	96000041-02	Cotter Pin	2
8	3300-012-500	95000125-00	Washer - Drive Rod	2
9	3300-016-700	12000167-00	Retaining Ring Spacer	1
10	3307-737-401	12970374-00L	Toggle Link Subassembly	1
11	3307-029-100	12970291-00	Rear Swing Subassembly	2
12	3300-007-606	96000076-06	<sup>1</sup> / <sub>4</sub> -20 x <sup>1</sup> / <sub>2</sub> " Serrated Truss Head Screw	1
13	3300-026-900	72000269-00	Drive Shaft Support Front	2
14	3300-914-700	12000147-00R	Spacing Link	1
15	3300-016-500	92000165-00	Spring - Drive Rod	1
16	3300-007-607	96000076-07	<sup>1</sup> / <sub>4</sub> -20 x <sup>3</sup> / <sub>4</sub> " Serrated Truss Head Screw	6
17	3300-031-900	96000319-00	<sup>1</sup> / <sub>4</sub> -20 Flange Nut	6



SUPPORT SHAFT ASSEMBLY



STYLE LY1005/3300-000-005 = STATIONARY MEDICAL RECLINER  
 LY1007/3300-000-007 = MOBILE MEDICAL RECLINER

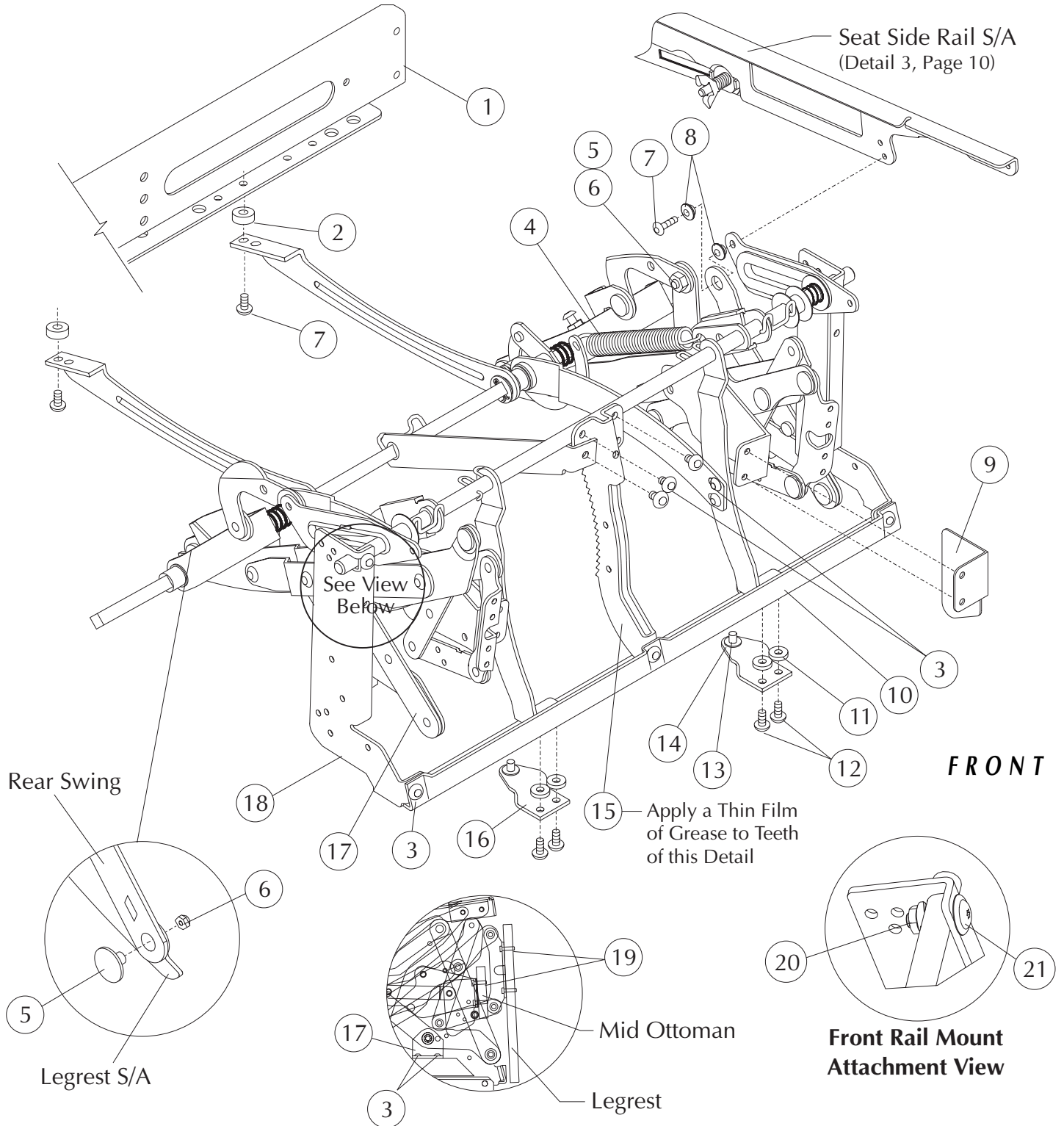
**STRYKER MEDICAL RECLINERS  
SUPPORT SHAFT ASSEMBLY**

Note: When replacing parts, specify style and acknowledgment numbers.

<b>DETAIL#</b>	<b>SYK PN</b>	<b>LZB PN</b>	<b>DESCRIPTION</b>	<b>QUANTITY</b>
1	3300-020-700	12000207-00	Slide Insert Attachment	2
2	3300-018-600	92000186-00	Spring	2
3	3300-004-000	15000040-00	Spacer - Round Rod	2
4	3300-023-001	12000230-01	Legrest Swing Bracket	2
5	3300-004-700	42000047-00	Retaining Spacer	2
6	3300-013-400	42000134-00	Spring Connection Link (end date 1/05/04)	1
7	3300-003-100	15000031-00	Slide Insert Attachment	2
8	3300-035-001	96000350-01	Friction Washer	6
9	3300-015-800	12000158-00	Spacing Clip	2
10	3307-730-100	62970301-00L	Legrest Subassembly	1
	3307-930-100	62970301-00R	Legrest Subassembly	1
11	3300-020-500	12000205-00	L.R. Lever Reinforcement	2
12	3300-006-004	96000060-04	Washer 9/32"	6
13	3300-026-100	96000261-00	1/4-20 x 3/8" Torx Truss Head Screw	6
14	3300-027-000	72000270-00	Front Support Arm	2
15	3300-016-501	12000165-01	Support Shaft	1
16	3300-048-900	96000489-00	1/4-20 x 1/2" Serrated Hex Head Screw	2

**SUPPORT SHAFT/DRIVE ROD ASSEMBLY**

FOR STYLES PRODUCED BEFORE 1/05/04



**Mechanism Side View**

STYLE LY1005/3300-000-005 = STATIONARY MEDICAL RECLINER  
 LY1007/3300-000-007 = MOBILE MEDICAL RECLINER

**STRYKER MEDICAL RECLINERS  
SUPPORT SHAFT/DRIVE ROD ASSEMBLY**

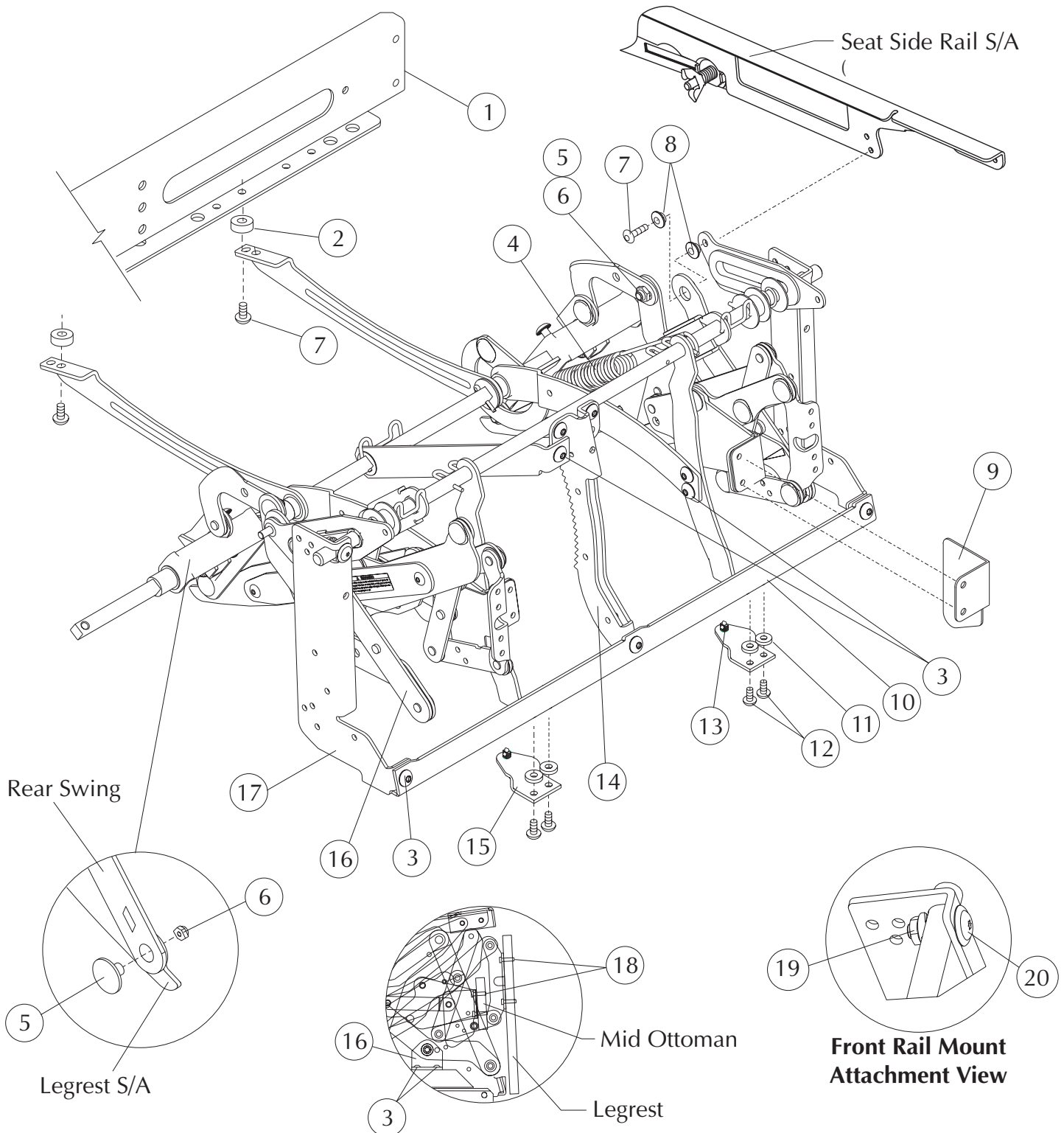
FOR STYLES PRODUCED BEFORE 1/05/04

Note: When replacing parts, specify style and acknowledgment numbers.

DETAIL#	SYK PN	LZB PN	DESCRIPTION	QUANTITY
1	3307-034-401	12970344-00	Metal Rear Rail Subassembly	1
2	3300-046-803	96000468-03	Spacer	2
3	3300-007-606	96000076-06	1/4-20 x 1/2" Serrated Truss Head Screw	14
4	3300-068-700	92000687-00	Extension Spring (Blue)	1
5	3300-005-401	16000054-01	5/16-24 x 5/8" Shoulder Bolt	4
6	3300-028-000	96000280-00	5/16-24 Lock Nut	4
7	3300-007-604	96000076-04	1/4-20 x 1" Serrated Truss Head Screw	4
8	3300-018-200	92000182-00	Shoulder Bushing	4
9	3300-723-800	12000238-00L	Mid Ottoman Guard	1
	3300-923-800	12000238-00R	Mid Ottoman Guard	1
10	3308-000-101	12180001-01	Front Rail	1
11	3300-002-200	96000022-00	Washer	4
12	3300-007-607	96000076-07	1/4-20 x 3/4" Serrated Truss Head Screw	4
13	3304-000-200	45000002-00	Plastic Bumper	2
14	3300-045-100	96000451-00	Speed Nut	2
15	3300-022-600	12000226-00	Pawl Rack	1
16	3300-026-700	72000267-00	Glide Bracket	2
17	3307-709-300	72970093-00L	Slide Lift Global Subassembly	1
	3307-909-300	72970093-00R	Slide Lift Global Subassembly	1
18	3307-700-200	12170002-00L	Front Rail Mounting Bracket - Modified	1
	3307-900-200	12170002-00R	Front Rail Mounting Bracket - Modified	1
19	3300-001-702	96000017-02	10-24 x 3/4" Torx Pan Head Screw	8
20	3300-031-900	96000319-00	1/4-20 Flange Nut	2
21	3300-039-800	96000398-00	1/4-20 x 15/16" Torx Truss Head Screw (Washer Head)	2

**SUPPORT SHAFT/DRIVE ROD ASSEMBLY**

FOR STYLES PRODUCED AFTER 1/05/04



**Mechanism Side View**

STYLE LY1005/3300-000-005 = STATIONARY MEDICAL RECLINER

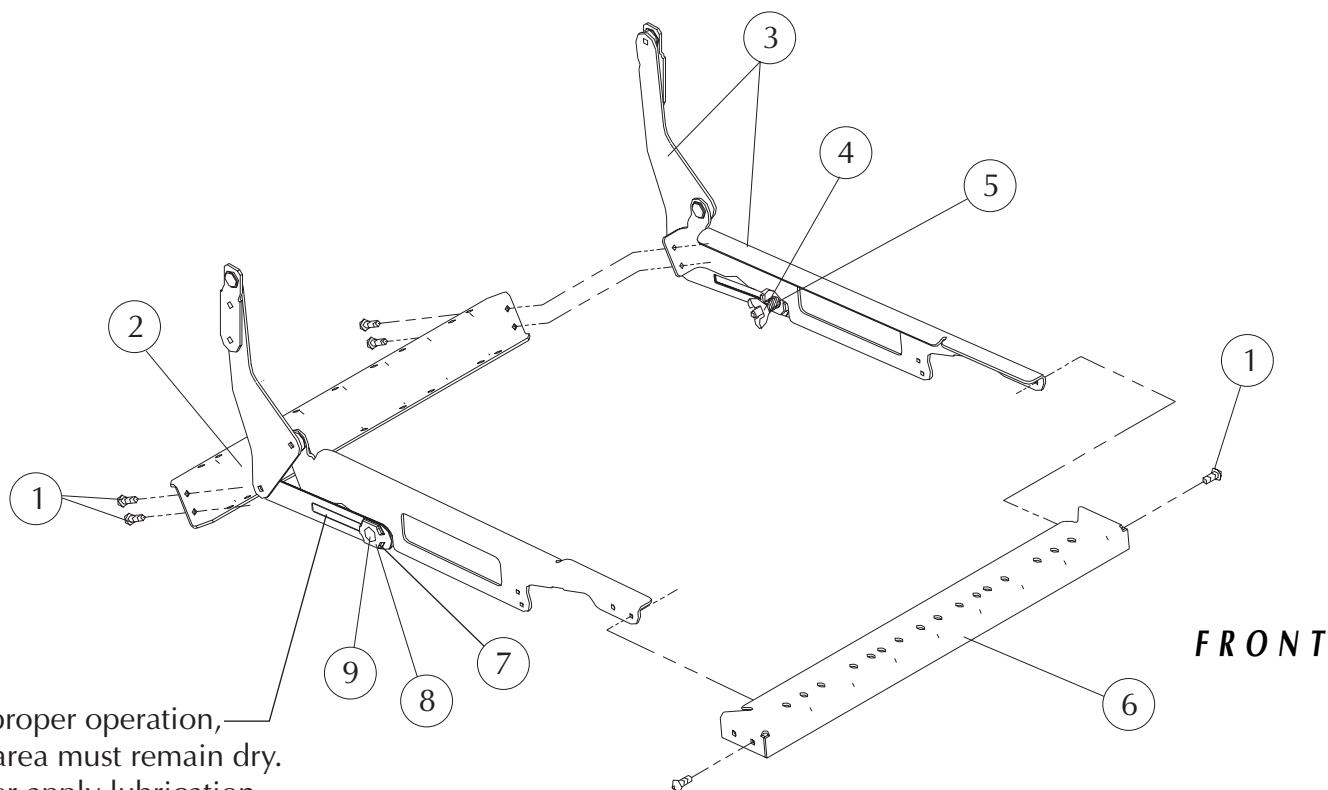
LY1007/3300-000-007 = MOBILE MEDICAL RECLINER

**STRYKER MEDICAL RECLINERS**  
FOR STYLES PRODUCED AFTER 1/05/04

Note: When replacing parts, specify style and acknowledgment numbers.

DETAIL#	SYK PN	LZB PN	DESCRIPTION	QUANTITY
1	3307-034-401	12970344-00	Metal Rear Rail Subassembly (01/01-present)	1
2	3300-046-803	96000468-03	Spacer (01/01-present)	2
3	3300-007-606	96000076-06	1/4-20 x 1/2" Serrated Truss Head Screw	14
4	3300-069-100	92000691-00	Extension Spring	1
5	3300-005-401	16000054-01	5/16-24 x 5/8" Shoulder Bolt	4
6	3300-028-000	96000280-00	5/16-24 Lock Nut	4
7	3300-007-604	96000076-04	1/4-20 x 1" Serrated Truss Head Screw	4
8	3300-018-200	92000182-00	Shoulder Bushing	4
9	3300-723-800	12000238-00L	Mid Ottoman Guard	1
	3300-923-800	12000238-00R	Mid Ottoman Guard	1
10	3308-000-101	12180001-01	Front Rail	1
11	3300-002-200	96000022-00	Washer	4
12	3300-007-607	96000076-07	1/4-20 x 3/4" Serrated Truss Head Screw	4
13	3300-038-902	95000389-02	Stop Pad	2
14	3300-022-600	12000226-00	Pawl Rack	1
15	3300-026-700	72000267-00	Glide Bracket	2
16	3307-709-300	72970093-00L	Slide Lift Global Subassembly	1
	3307-909-300	72970093-00R	Slide Lift Global Subassembly	1
17	3307-700-200	12170002-00L	Front Rail Mounting Bracket - Modified	1
	3307-900-200	12170002-00R	Front Rail Mounting Bracket - Modified	1
18	3300-001-702	96000017-02	10-24 x 3/4" Torx Pan Head Screw	8
19	3300-031-900	96000319-00	1/4-20 Flange Nut	2
20	3300-039-800	96000398-00	1/4-20 x 15/16" Torx Truss Head Screw (Washer Head)	2

SEAT MECHANISM



For proper operation,  
this area must remain dry.  
Never apply lubrication  
to this area.

STYLE LY1005/3300-000-005 = STATIONARY MEDICAL RECLINER  
LY1007/3300-000-007 = MOBILE MEDICAL RECLINER

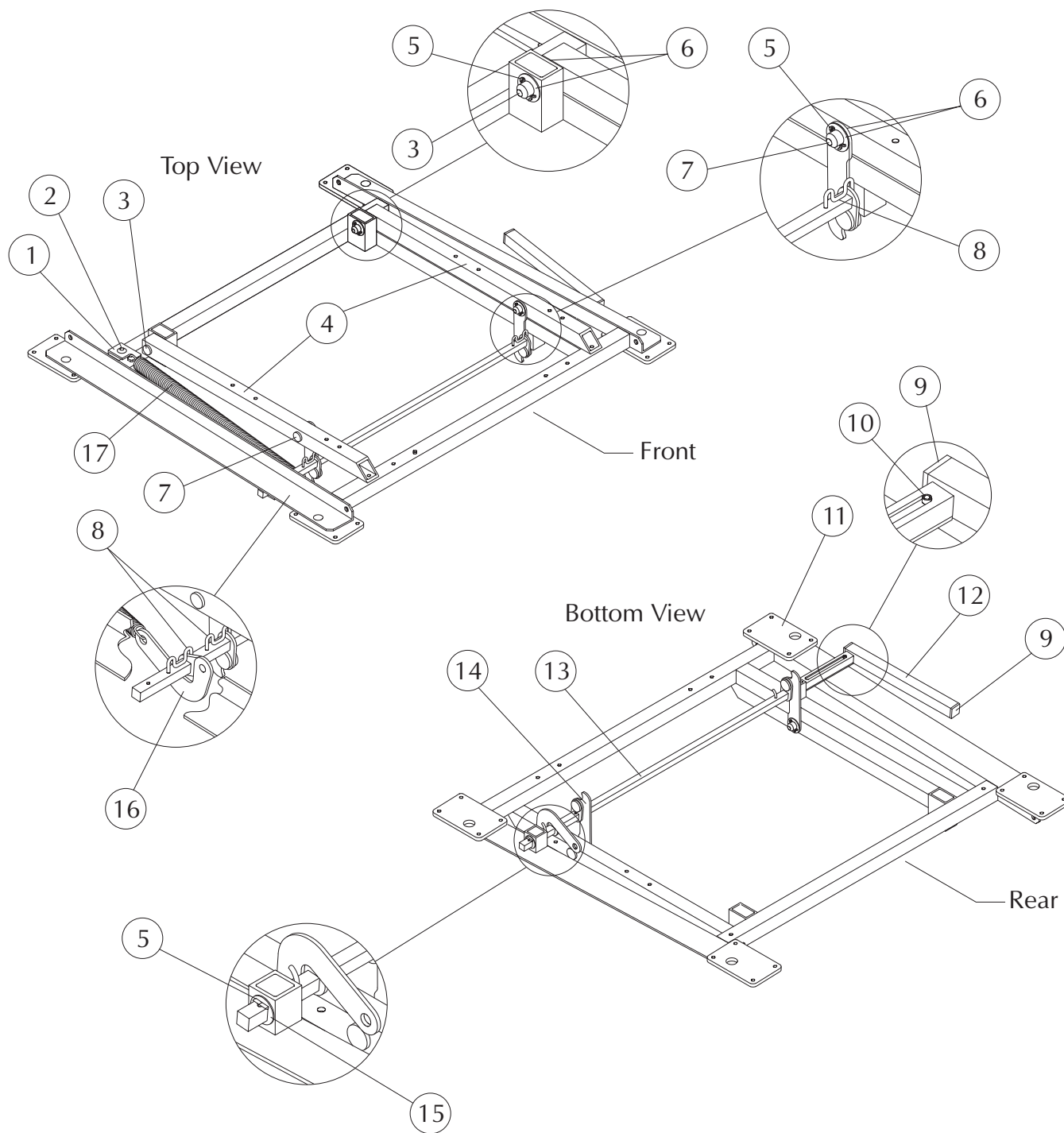
**STRYKER MEDICAL RECLINERS  
SEAT MECHANISM**

Note: When replacing parts, specify style and acknowledgment numbers.

<b>DETAIL#</b>	<b>SYK PN</b>	<b>LZB PN</b>	<b>DESCRIPTION</b>	<b>QUANTITY</b>
1	3300-007-606	96000076-06	1/4-20 x 1/2" Serrated Truss Head Screws	6
2	3302-000-100	12320001-00	Seat Rear Rail	1
3	3307-728-900	12970289-00L	Seat Side Rail Subassembly	1
	3307-928-900	12970289-00R	Seat Side Rail Subassembly	1
4	3300-039-000	96000390-00	Wing Nut (Part of Detail #3)	2
5	3300-065-400	92000654-00	Compression Spring (Part of Detail #3)	2
6	3303-000-100	12330001-00	Seat front rail	1
7	3300-003-500	16000035-00	Friction Washer (Part of Detail #3)	6
8	3300-009-600	12000096-00	Spur Washer (Part of Detail #3)	2
9	3300-001-400	96000014-00	Carriage Bolt (Part of Detail #3)	2



**BASE ASSEMBLY  
PART # 62980095-00**



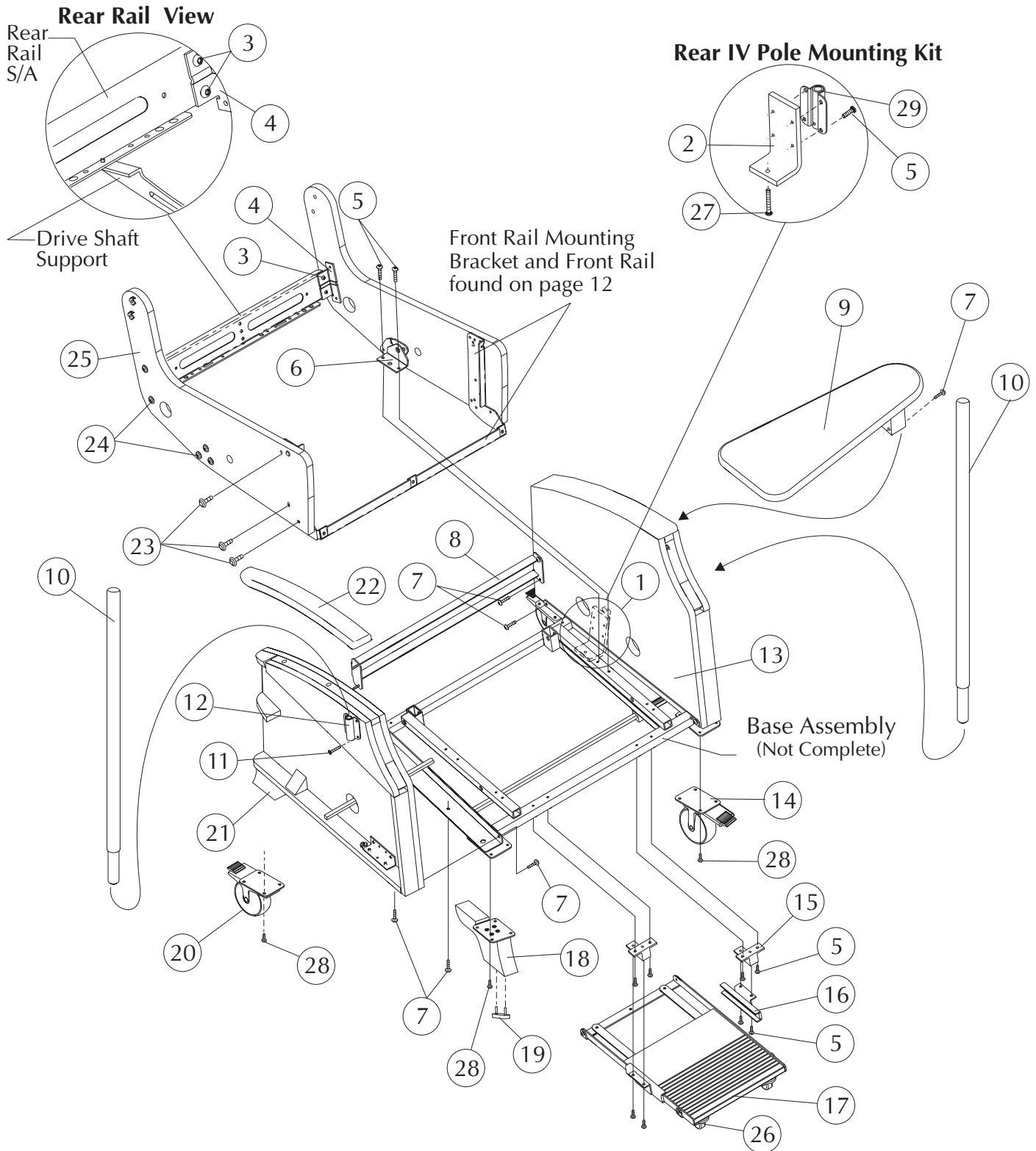
STYLE LY1005/3300-000-005 = STATIONARY MEDICAL RECLINER  
 LY1007/3300-000-007 = MOBILE MEDICAL RECLINER

**STRYKER MEDICAL RECLINERS  
BASE ASSEMBLY**

Note: When replacing parts, specify style and acknowledgment numbers.

<b>DETAIL#</b>	<b>SYK PN</b>	<b>LZB PN</b>	<b>DESCRIPTION</b>	<b>QUANTITY</b>
1	3300-004-800	42000048-00	Spring Attachment Bracket	1
2	3300-007-606	96000076-06	1/4-20 x 1/2" Serrated Truss Head Screw	1
3	3300-022-501	12000225-01	Pivot Pin - Long	2
4	3300-022-100	12000221-00	Pivot Arm Support	2
5	3300-004-102	96000041-02	Cotter Pin	6
6	3304-002-200	75000022-00	Nylon Washer	8
7	3300-022-502	12000225-02	Pivot Pin - Short	2
8	3300-004-700	42000047-00	Retaining Spacer	3
9	3300-004-100	15000041-00	End Cap	2
10	3300-004-001	96000040-01	3/16 x 5/8" Roll Pin	1
11	3307-010-400	12970104-00	Base Subassembly	1
12	3307-025-500	62970255-00	Flat-Bed Handle Subassembly	1
13	3300-046-800	62000468-00	Trlg Drive Rod	1
14	3307-725-900	62970259-00L	Over Center Stop Subassembly	2
15	3300-105-800	15001058-00	Nylon Bearing	4
16	3307-725-800	62970258-00L	Over Center Toggle Subassembly	1
17	3300-017-500	92000175-00	Power Spring - Large	1

MECHANISM ASSEMBLY



STYLE LY1005/3300-000-005 = STATIONARY MEDICAL RECLINER  
 LY1007/3300-000-007 = MOBILE MEDICAL RECLINER

**STRYKER MEDICAL RECLINERS  
MECHANISM ASSEMBLY**

Note: When replacing parts, specify style and acknowledgment numbers.

DETAIL#	SYK PN	LZB PN	DESCRIPTION	QUANTITY
1	3307-001-202	KIT70012-02	Rear IV Pole Kit, Option	1
2	3300-058-300	62000583-00	Mounting Bracket, Option	1
3	3300-048-901	96000489-01	1/4-20 x 13/16" Hex Head Screw	4
4	3300-027-301	12000273-01	Rear Rail Bracket (Refer to Rear Rail on page 8)	2
5	3300-007-606	96000076-06	1/4-20 x 1/2" Serrated Truss Head Screw (LY1005 only)	8
	3300-007-606	96000076-06	1/4-20 x 1/2" Serrated Truss Head Screw (LY1007 only)	16
6	3307-008-300	72970083-00	Pivot Subassembly	2
7	3300-002-402	96000024-02	1/4-20 x 1" Truss Head Screw	12
8	3302-000-102	12020001-02	Rear Rail	1
9	3307-001-702	KIT70017-02	Side Tray Assembly Kit, Option, <b>RT</b> <a href="#">See General Information</a>	1
	3307-001-702	KIT70017-02	Side Tray Assembly, Option, <b>LT</b> <a href="#">See General Information</a>	1
	3307-001-702	KIT70017-02	Dual Side Tray Assembly (Option)	2
10	3300-042-500	62000425-00	IV Pole, Option (end date 10/30/04)	1
	3300-042-501	62000425-01	IV Pole, Option (pt. of det. #1) (11/1/04-present)	1
11	3300-001-302	96000013-02	1/4-20 x 1" Torx Flat Head Screw	8
12	3300-053-600	62000536-00	Tray Mount Guide, Option (end date 10/30/04)	3
13	3307-774-100	11970741-00L	Outer Body Side Subassembly	1
	3307-974-100	11970741-00R	Outer Body Side Subassembly	1
14	3300-020-600	65000206-00	Rigid Locking Caster (LY1007 only)	2
15	3300-024-200	12000242-00	Mounting Bracket (LY1007 only)	2
16	3307-712-400	62970124-00L	Foot Board Support Bracket Subassembly (LY1007 only)	1
	3307-912-400	62970124-00R	Foot Board Support Bracket Subassembly (LY1007 only)	1
17	3307-025-300	62970253-00	Foot Tray Subassembly (LY1007 only)	1
18	3307-064-802	61970648-02	Front Foot Subassembly	2
19	3300-047-500	96000475-00	Glide (LY1005 only)	4
20	3300-016-900	65000169-00	Swivel Lock Caster (LY1007 only)	2
	3300-016-900	65000169-00	Swivel Lock Caster (LY1007 only) (Option)	2
21	3307-064-801	61970648-01	Rear Foot Subassembly	2
22	3309-774-201	11990742-01L	Top Arm Finished	1
	3309-974-201	11990742-01R	Top Arm Finished	1
23	3300-039-800	96000398-00	1/4-20 x 15/16" Truss Head Screw (Washer Head)	6
24	3300-039-801	96000398-01	1/4-20 x 11/16" Truss Head Screw (Washer Head)	10
25	3307-088-000	41970880-00	Inner Body Side T-Nut Subassembly	1
26	3300-042-700	62000427-00	Foot Tray Caster	2
27	3300-002-403	96000024-03	1/4-20 x 1 3/4" Truss Head Screw, Option	1
28	3300-048-900	96000489-00	1/4-20 x 1/2" Serrated Hex Head Screw	16
29	3300-067-400	62000674-00	IV Tube Bracket, Option (pt. of det. #1) (11/1/04-present)	1

\* Indicate finish or color when ordering  
 \*\* Indicate fabric cover number when ordering

### REPLACING THE MOBILE BASE

#### PARTS LIST:

62980095-00	(1)	<b>Replacement Base</b>
96000462-00	(4)	<b>¼-10 x 1¼" Wood Screws</b>
65000168-00	(2)	<b>Nonlocking Stationary Casters</b>
65000169-00	(2)	<b>Locking Swivel Casters</b>
96000076-06	(16)	<b>¼-20 x ½" T.H. Screws (Casters)</b>
62970124-00L	(1)	<b>Footboard Brackets</b>
62970124-00R	(1)	<b>Footboard Brackets</b>
12000242-00	(2)	<b>Mounting Brackets</b>

#### TOOLS REQUIRED:

#30 Torx Driver  
 3/16" Drill Bit  
 Power Drill  
 Caster Wrench

1. Remove the back from the chair body by unlocking the back brackets and lifting the back out.

2. Turn the chair body upside down placing it on its arms. Be sure to place a protective covering underneath the arms.

3. Next, remove the footboard. Use a T-30 torx driver to remove the screws that attach the footboard brackets to the mounting brackets. **See illustration #1.**



Illustration #1

4. Slide the seat forward.

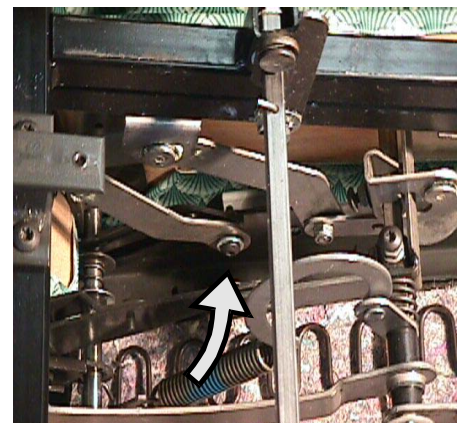
5. Remove the two (2) **front** seat slide screws using T-30 torx driver. **See illustration 2.**



Illustration #2

6. Remove two (2) **rear** seat slide screws. **See illustration 3.**

**Note:** Be sure to observe the orientation of the washers at the rear of seat slide for accurate replacement.



7. Return the chair body to its upright position.

8. Place your hand underneath the front of the seat and flip the seat back so it is outside the chair body. **See illustration 4.**

**Note: The rear of seat should still be attached.**



Illustration #4

10. Return the seat to its original position inside the chair.

11. Turn the chair upside down again.

12. Remove the casters using a caster wrench. **See illustration 6.**



Illustration #6

9. With the seat out of the way, remove the four (4) pivot mount screws and four (4) tilt control screws using a T-30 torx driver. **See illustration 5.**

13. Remove the four (4) screws attaching the base to the side arms. **See illustration 7.**

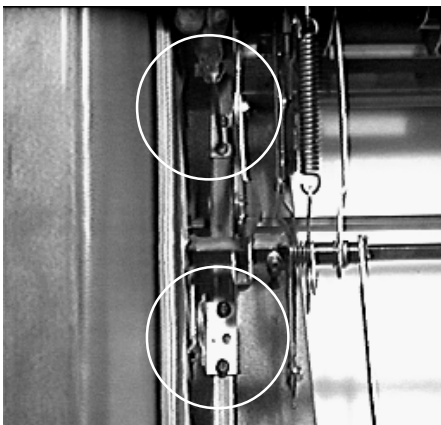


Illustration #5



Illustration #7

14. Remove the base.

15. Attach the new base to the side arms with the four (4) screws that you removed in Step 13.

**Note: Make sure these four (4) screws are tightened completely.**

16. Drill  $\frac{3}{16}$ " pilot hole through the bottom of chair arm using a power drill. **See illustration 8.**

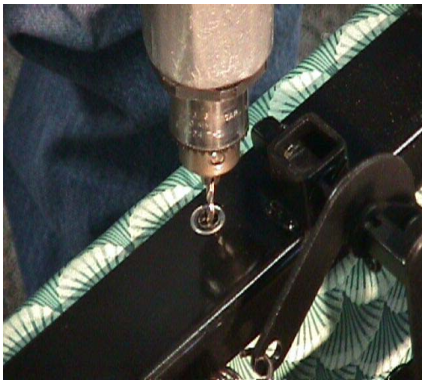


Illustration #8

17. Insert four (4) #14-10 x  $1\frac{1}{4}$ " wood screws into the chair arm. **See illustration #9.**

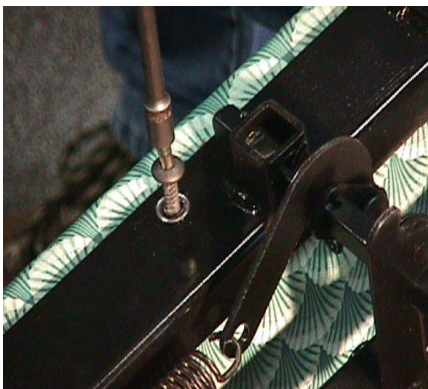


Illustration #9

18. Attach the casters to the base using the sixteen (16)  $\frac{1}{4}$ -20x  $\frac{1}{2}$ " truss head screws provided.

**Note: The stationary casters should be attached to the front of the chair body and the swivel casters to the back.**

19. After attaching the casters, return the chair body to its upright position.

20. Repeat Step 8.

21. Reinsert the four (4) pivot mount screws and four (4) tilt control screws that were removed in Step 9.

22. Placing your hand underneath the front of the seat, return the seat to its upright position inside the chair body.

23. Turn the chair body upside down and place the chair on its arms.

24. Reattach front and rear seat slide screws. **See illustration 10.**

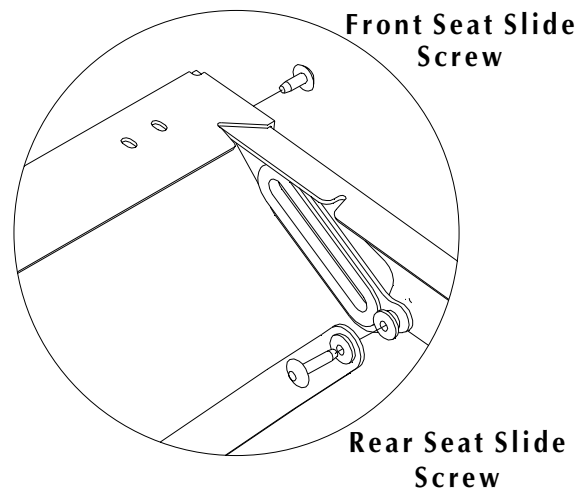


Illustration #10

25. To reattach the footboard, begin by fastening the new footboard mounting brackets to the chair base using  $\frac{1}{4}$ -20 x  $\frac{1}{2}$  truss head screws. See illustration 11.

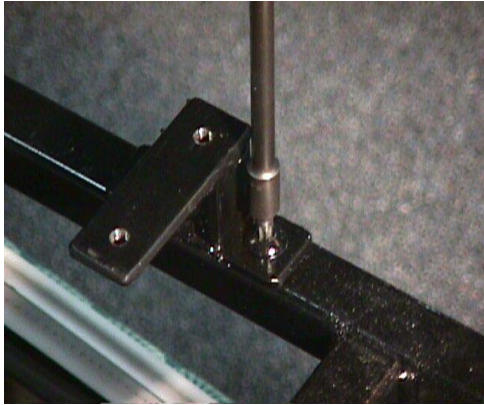


Illustration #11

26. Place the new footboard brackets to one side, fasten securely. Position the footboard on the bracket and attach the opposite bracket while simultaneously holding the footboard. See illustration 12.

**Note:** The shorter end of footboard brackets should be toward the front of the chair.



Illustration 12

27. Turn the chair right side up.



## Style LY1005/3300-000-005 Stationary Medical Recliner

<b>Dimensions:</b>	Back Height from Floor	47.00"																												
	Back Height from Seat	33.00"																												
	Seat Width	24.75"																												
	Seat Height	20.88"																												
	Seat Depth	20.00"																												
	Arm Height from Floor	27.13"																												
	Overall Width	31.00"																												
	Overall Width including handles	35.50"																												
	Overall Depth	34.00"																												
	Reclined Depth	56.00"																												
	Reclined Depth w/ legrest extended	70.00"																												
	Maximum Recline Angle	180° (parallel to floor)																												
	Maximum Recline Angle w/ flat bed assist lever	183° (3° negative pitch to floor)																												
	Weight	155 lbs.																												
<b>Finish:</b>	Type of Finish	High Solids Catalyzed Lacquer																												
	Available Colors	<table border="0"> <tr> <td>150</td> <td>Hard Rock Maple</td> <td>051</td> <td>Natural</td> </tr> <tr> <td>154</td> <td>Fine Oak</td> <td>431</td> <td>Dark Cherry</td> </tr> <tr> <td>151</td> <td>Port Maple</td> <td>143</td> <td>White Blush</td> </tr> <tr> <td>152</td> <td>Wild Cherry</td> <td>435</td> <td>Classic Cherry</td> </tr> <tr> <td>447</td> <td>Cayenne Maple</td> <td></td> <td></td> </tr> <tr> <td>448</td> <td>Honey Maple</td> <td></td> <td></td> </tr> <tr> <td>449</td> <td>Select Cherry</td> <td></td> <td></td> </tr> </table>	150	Hard Rock Maple	051	Natural	154	Fine Oak	431	Dark Cherry	151	Port Maple	143	White Blush	152	Wild Cherry	435	Classic Cherry	447	Cayenne Maple			448	Honey Maple			449	Select Cherry		
150	Hard Rock Maple	051	Natural																											
154	Fine Oak	431	Dark Cherry																											
151	Port Maple	143	White Blush																											
152	Wild Cherry	435	Classic Cherry																											
447	Cayenne Maple																													
448	Honey Maple																													
449	Select Cherry																													
<b>Frame Construction:</b>	Frame Material	Furniture grade plywood																												
	Frame Construction	Steel channel cross members																												
	Arm Cap Attachment	Arm cap attaches to body with spring steel compression dowels																												
	Feet	Hard maple																												
<b>Seat Construction:</b>	Frame Material	Steel channel frame																												
	Suspension	Sinuous wire springs, crossbrace wire and composition pad																												
	Foam Type	High resilient (HR) polyurethane foam																												
<b>Back Construction:</b>	Frame Material	Hardwood																												
	Frame Construction	Double doweled and glued																												
	Suspension	Sinuous wire springs																												
	Back Foam Core	High resilient (HR) polyurethane foam																												
<b>Upholstery Details:</b>	Patterns Available	Fabric, vinyl, C.O.M.																												
<b>Test Data:</b>	Fabric Tests	Consult specific fabric card																												
	BIFMA Tests	Meets ANSI/BIFMA X5.4 - American National Standard for Office Furnishings - Lounge Seating. Tests conducted in La-Z-Boy's CERTIFIED test facility.																												
	Flammability Tests	<p>Meets BIFMA First Generation Voluntary Upholstered Furniture Flammability Standard for Business and Institutional Markets, F1-1978-revised 1980. California Bureau of Home Furnishings - Technical Bulletin 117.</p> <p>Meets Flammability Requirements of California Bureau of Home Furnishings Technical Bulletin 133 when ordered with La-Z-Boy Code Red Fabrics and Vinyl's. Consult a Stryker Customer Service Representative at 1-800-STRYKER for further information.</p> <p>Upholstered Furniture Action Council Class 1.</p>																												

## Style LY1007/3300-000-007 Mobile Medical Recliner

<b>Dimensions:</b>	Back Height from Floor	48.50"		
	Back Height from Seat	33.00"		
	Seat Width	24.75"		
	Seat Height	20.88"		
	Seat Depth	20.00"		
	Arm Height from Floor	27.13"		
	Overall Width	31.00"		
	Overall Width including handles	35.50"		
	Overall Depth	34.00"		
	Reclined Depth	56.00"		
	Reclined Depth w/ legrest extended	70.00"		
	Maximum Recline Angle	180° (parallel to floor)		
	Maximum Recline Angle w/ flat bed assist lever	183° (3° negative pitch to floor)		
	Weight	159 lbs.		
<b>Finish:</b>	Type of Finish	High Solids Catalyzed Lacquer		
		150	Hard Rock Maple	051 Natural
		154	Fine Oak	431 Dark Cherry
		151	Port Maple	143 White Blush
		152	Wild Cherry	435 Classic Cherry
		447	Cayenne Maple	
		448	Honey Maple	
		449	Select Cherry	
<b>Frame Construction:</b>	Frame Material	Furniture grade plywood		
	Frame Construction	Steel channel cross members		
	Arm Cap Attachment	Arm cap attaches to body with spring steel compression dowels		
	Casters	Dual wheel locking - polyurethane treads, braking mechanism in rear casters locks both movement and swivel, soft gray		
	Foot tray	Furniture grade plywood with non-slip rubber surface, helper casters for added stability		
<b>Seat Construction:</b>	Frame Material	Steel channel frame		
	Suspension	Sinuous wire springs, crossbrace wire and composition pad		
	Foam Type	High resilient (HR) polyurethane foam		
<b>Back Construction:</b>	Frame Material	Hardwood		
	Frame Construction	Double doweled and glued		
	Suspension	Sinuous wire springs		
	Back Foam Core	High resilient (HR) polyurethane foam		
<b>Upholstery Details:</b>	Patterns Available	Fabric, vinyl, C.O.M.		
<b>Test Data:</b>	Fabric Tests	Consult specific fabric card		
	BIFMA Tests	Meets ANSI/BIFMA X5.4 - American National Standard for Office Furnishings - Lounge Seating. Tests conducted in La-Z-Boy's CERTIFIED test facility. Meets BIFMA First Generation Voluntary Upholstered Furniture Flammability Standard for Business and Institutional Markets, F1-1978-revised 1980. California Bureau of Home Furnishings - Technical Bulletin 117.		
<b>Flammability Tests</b>		Meets Flammability Requirements of California Bureau of Home Furnishings Technical Bulletin 133 when ordered with La-Z-Boy Code Red Fabrics and Vinyl's. Consult a Stryker Customer Service Representative at 1-800-STRYKER for further information. Upholstered Furniture Action Council Class 1.		

**Service Kits:**

**Rear IV Pole Service Kit , Option**

**KIT70012-02/3307-001-202 includes:**

<u>QTY</u>	<u>SYK PN</u>	<u>LZB PN</u>	<u>DESCRIPTION</u>
(1)	3300-058-300	62000583-00	Mounting Bracket
(1)	3300-067-400	62000674-00	IV Tube Bracket, Rear Mount
(1)	3300-042-501	62000425-01	IV Pole
(4)	3300-007-606	96000076-06	1/4-20 x 1/2" Ser. Truss Head Screws
(1)	3300-002-403	96000024-03	1/4-20 x 1 3/4" Truss Head Screw
(1)	3300-061-201	63000612-01	Assembly Instructions

**Lock Down Back Service Kit**

**KIT70013-03/3307-001-303 includes:**

<u>QTY</u>	<u>SYK PN</u>	<u>LZB PN</u>	<u>DESCRIPTION</u>
(1)	3307-707-900	92970079-00L	Back Latch Bracket Assembly
(1)	3307-907-900	92970079-00R	Back Latch Bracket Assembly
(1)	3300-048-800	62000488-00	Lock Bar
(4)	3300-001-301	96000013-01	1/4-20 x 3/4" Torx Flat Head Screws
(2)	3300-000-501	94000005-01	Black Strap
(1)	3300-061-501	63000615-01	Assembly Instructions

**Hinged Folding Push Bar Service Kit**

**KIT70016-04/3307-001-604 includes:**

<u>QTY</u>	<u>SYK PN</u>	<u>LZB PN</u>	<u>DESCRIPTION</u>
(1)	3307-050-403	62970504-03	Push Bar/Hinge S/A
(2)	3300-007-100	96000071-00	Nylon Washer
(2)	3300-027-300	65000273-00	Recessed Bumper
(2)	3300-020-001	96000200-01	#10-18 x 3/4" Phillips Head Screws
(4)	3300-002-413	96000024-13	1/4-20 x 2" Torx Head Screw
(2)	3300-029-000	65000290-00	Decorative Cap Nuts
(2)	3300-029-200	65000292-00	Rubber Washer
(1)	3300-067-301	63000673-01	Assembly Instructions

**GENERAL INFORMATION**

**Three Piece Rear Rail:**

Four Hex Head Screws are used to attach the Metal Rear Rail to the Rear Rail Brackets. The screws are installed in a counterclockwise direction starting with the upper slot in the left (when sitting). Do not tighten this screw completely until the other three screws are installed and fastened firmly. The upper right, lower right and lower left screws are tightened when they are installed.

**Legrest Subassembly:**

When a complete Legrest Subassembly is being replaced it is necessary to order:

- Legrest S/A (62970301-00L/R)
- L.R. Lever Reinforcement (12000205-00)
- Washer (96000060-04)
- 1/4-20 Truss Head Screws (96000261-00)

*Refer to page 9 for quantities needed.*

**Service Kits:**

**Side Tray Assembly, Option**

**KIT70017-02/3307-001-702**

<u>QTY</u>	<u>SYK PN</u>	<u>LZB PN</u>	<u>DESCRIPTION</u>
(1)	3307-009-000	65970090-00	Side Tray Subassembly
(4)	300-002-402	9600024-02	1/4-20 x 1" Truss Head Screw

The Side Tray for Healthcare Recliners is being replaced effective 9/03/04. If there is a failure to an existing tray, replace entire assembly. Replacement parts will not be available for the obsolete tray.

The Side Tray can be mounted on either side of the chair.

**RT or LT Option:**

**LT - side tray will be mounted on left side of chair**

**RT - side tray will be mounted on right side of chair**

**PARTS REQUIRED**

**TOOLS REQUIRED**

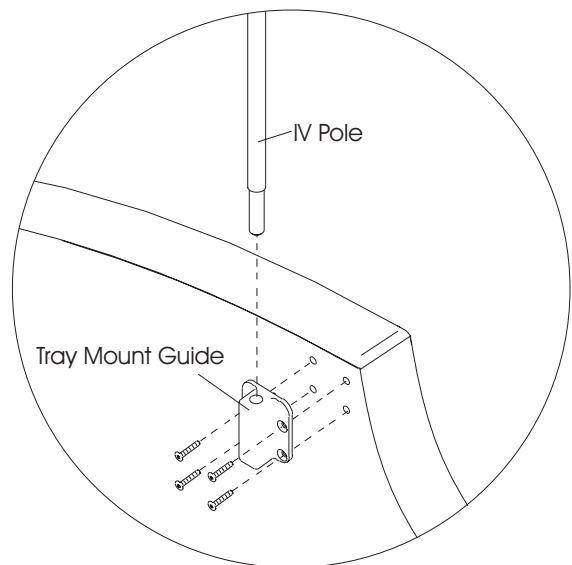
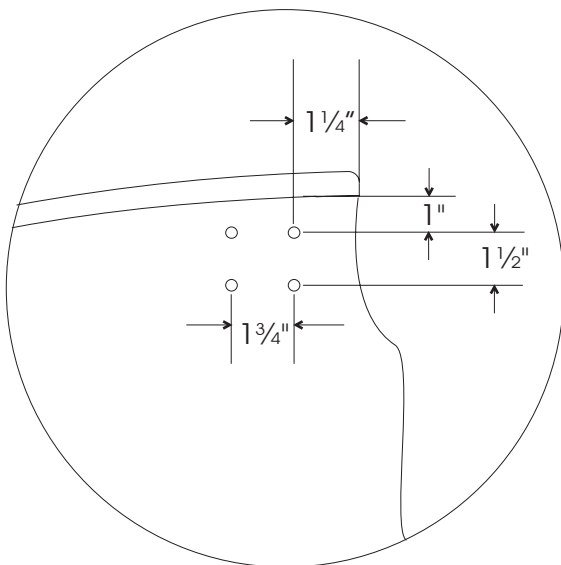
QUANTITY	PART#	DESCRIPTION
(2)	62000536-00	Tray Mount Guide
(8)	96000013-02	Flat Head Screw (1/4 - 20 x 1")
(1)	62000425-00	IV Pole

T-30 Torx (included)  
Straight Pin  
Tape Measure  
Marker

**IV POLE ASSEMBLY INSTRUCTIONS**

- Using a tape measure, measure back 1 1/4" from the front edge of the wood top arm. Marking this location with your finger, measure 1" down from this point, locating the first hole with your thumb. Use a straight pin to pierce the vinyl or fabric and highlight this hole location with a marker.
- Using the dimensions provided on the diagram below, find the three remaining holes. Use a straight pin to pierce the vinyl or fabric and highlight each hole location with a marker.

- Line up the *Tray Mount Guide* with the marks on the body side. Insert the flat head screws into the holes and tighten, using the T-30 torx. Refer to diagram below.
- Repeat steps 1-3 to mount the other *Tray Mount Guide* on the opposite side of the body.
- Slide the stem of the *IV Pole* through the main hole of either *Tray Mount Guide* to complete assembly.



STYLES: LY1005, LY1007

KIT70017-02

### PARTS INCLUDED:

QUANTITY	PART#	DESCRIPTION
(1)	65970090-00	Side Tray Assembly
(4)	96000024-02	1/4-20 x 1" Torx Truss Head Screw

### TOOLS REQUIRED:

T-30 Torx Wrench  
Straight Pin  
Tape Measure  
Marker

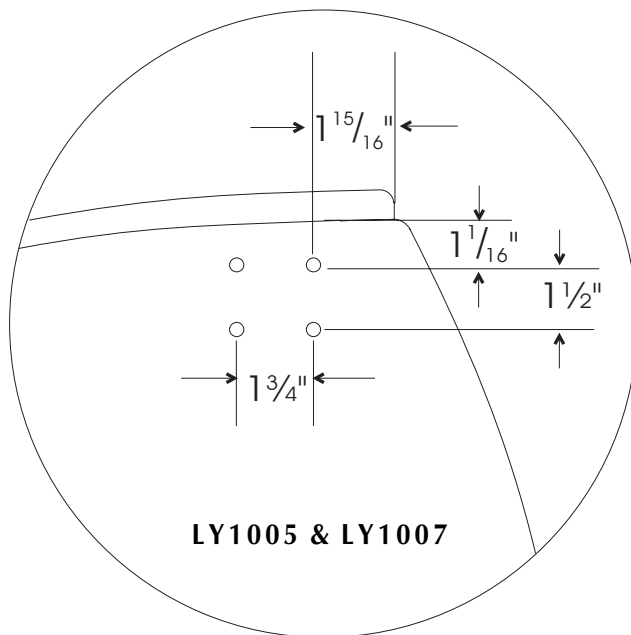
*Refer to diagram for style dimensions:*

1. Using a tape measure, measure back from the front edge of the wood top arm. Marking this location with your finger, measure down from this point, locating the first hole with your thumb. Use a straight pin to pierce the vinyl or fabric and highlight this hole location with a marker.

2. Find the three remaining holes. Use a straight pin to pierce the vinyl or fabric and highlight each hole location with a marker.

3. Line up the *Side Tray Assembly* with the marks on the body side. Insert the 1/4-20 x 1" Torx Truss Head Screws into the holes and tighten using the T-30 torx wrench.

### Side Tray Assembly Location Diagram



### Side Tray Installed

