

**stryker<sup>®</sup>**  
**Medical**

---

---

*LY1800/3300-00-900 Series*

---

*Operations/Maintenance Manual*

*For Parts or Technical Assistance*  
*800-327-0770*

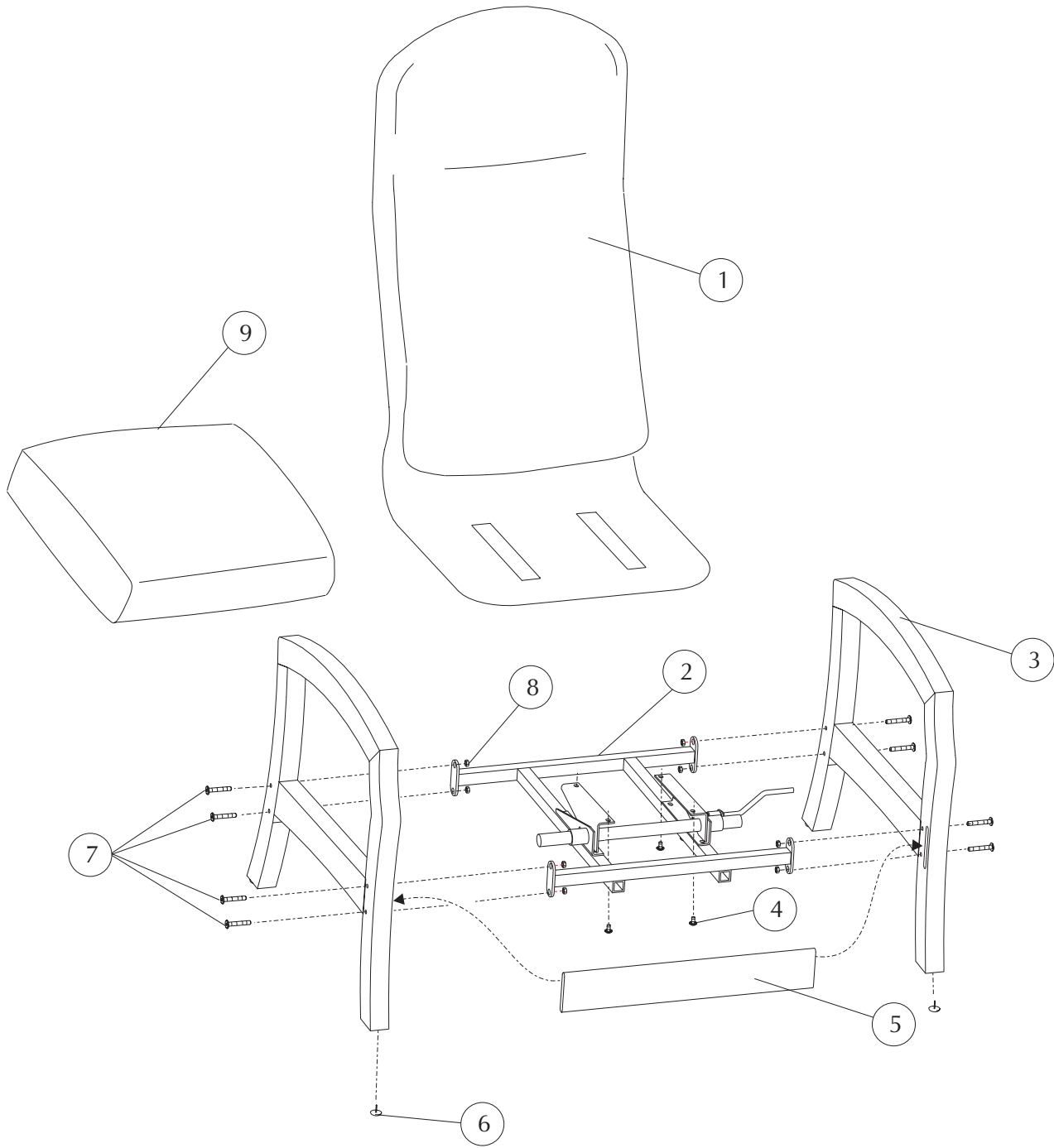
---

# *LY1800/3300-00-900 Series*

---

## **Table of Contents**

Style	<b>LY1800/3300-000-900</b>	
	<b>LY1804/3300-000-920</b>	
	<b>LY2100/3300-000-940</b>	
	<b>LY2104/3300-000-960</b>	2-3
Specification	<b>LY1800/3300-000-900</b>	4
Specification	<b>LY1804/3300-000-920</b>	5
Specification	<b>LY2100/3300-000-940</b>	6
Specification	<b>LY2104/3300-000-960</b>	7
Assembly Instructions	<i>How to Replace Base Assembly</i>	
Assembly Instructions	<i>How to Replace Side Frame and Front Rail</i>	
Assembly Instructions	<i>How to Replace Upholstered Back</i>	



STYLE LY1800/3300-000-900 = STATIONARY 18" PATIENT CHAIR  
STYLE LY1804/3300-000-920 = ROCKING 18" PATIENT CHAIR (FEATURED)  
STYLE LY2100/3300-000-940 = STATIONARY 21" PATIENT CHAIR  
STYLE LY2104/3300-000-960 = ROCKING 21" PATIENT CHAIR

STRYKER MEDICAL HEALTHCARE SERIES

Note: When replacing parts, specify style and acknowledgment numbers.

DETAIL#	SYK PN	LZB PN	DESCRIPTION	QUANTITY
<b>Stationary Patient Chair 18" (LY1800):</b>				
1	3309-048-000	64990480-00**	Back Upholstered plus 2 yd. Cover required	1
2	3308-035-600	62980356-00	Stationary Base Assembly	1
3	3309-766-800	61990668-00L*	Side Frame Finished	1
	3309-966-800	61990668-00R*	Side Frame Finished	1
4	3300-007-607	96000076-07	1/4-20 x 3/4" Serrated Truss Head Screw	4
5	3309-004-400	61990044-00*	Front Rail Finished	1
6	3300-011-400	96000114-00	7/8" dia. Plastic Nail Glide	4
7	3300-041-702	96000417-02	5/16-18 Joint Connector Bolt	8
8	3300-047-700	96000477-00	5/16-18 Flange Nut	8
9	3309-096-400	64990964-00**	Seat Cushion Complete plus 1.5 yd. cover required	1
<b>Rocking Patient Chair 18" (LY1804):</b>				
1	3309-048-000	64990480-00**	Back Upholstered plus 2 yd. cover required	1
2	3308-035-400	62980354-00	Base & Tilt Assembly	1
3	3309-766-800	61990668-00L*	Side Frame Finished	1
	3309-966-800	61990668-00R*	Side Frame Finished	1
4	3300-007-607	96000076-07	1/4-20 x 3/4" Serrated Truss Head Screw	4
5	3309-004-400	61990044-00*	Front Rail Finished	1
6	3300-011-400	96000114-00	7/8" dia. Plastic Nail Glide	4
7	3300-041-702	96000417-02	5/16-18 Joint Connector Bolt	8
8	3300-047-700	96000477-00	5/16-18 Flange Nut	8
9	3309-096-400	64990964-00**	Seat Cushion complete plus 1.5 yd. cover required	1
<b>Stationary Patient Chair 21"(LY2100):</b>				
1	3309-048-000	64990480-00**	Back Upholstered plus 2 yd. Cover required	1
2	3308-035-600	62980356-00	Stationary Base Assembly	1
3	3309-767-100	61990671-00L*	Side Frame Finished	1
	3309-967-100	61990671-00R*	Side Frame Finished	1
4	3300-007-607	96000076-07	1/4-20 x 3/4" Serrated Truss Head Screw	4
5	3309-004-400	61990044-00*	Front Rail Finished	1
6	3300-011-400	96000114-00	7/8" Dia. Plastic Nail Glide	4
7	3300-041-702	96000417-02	5/16-18 Joint Connector Bolt	8
8	3300-047-700	96000477-00	5/16-18 Flange Nut	8
9	3309-096-400	64990964-00**	Seat Cushion complete plus 1.5 yd. Cover required	1
<b>Rocking Patient Chair 21" (LY2104):</b>				
1	3309-048-000	64990480-00**	Back Upholstered plus 2 yd. Cover required	1
2	3308-035-400	62980354-00	Base & Tilt Assembly	1
3	3309-767-100	61990671-00L*	Side Frame Finished	1
	3309-967-100	61990671-00R*	Side Frame Finished	1
4	3300-007-607	96000076-07	1/4-20 x 3/4" Serrated Truss Head Screw	4
5	3309-004-400	61990044-00*	Front Rail Finished	1
6	3300-011-400	96000114-00	7/8" dia. Plastic Nail Glide	4
7	3300-041-702	96000417-02	5/16-18 Joint Connector Bolt	8
8	3300-047-700	96000477-00	5/16-18 Flange Nut	8
9	3309-096-400	64990964-00**	Seat Cushion complete plus 1.5 yd. Cover required	1

\* Indicate finish or color when ordering  
 \*\* Indicate fabric cover number when ordering  
 \*\*\* Add charge for yardage to cost of kit ----

Style LY1800/3300-000-900 Stationary Patient Chair 18"

<b>Dimensions:</b>	Back Height from Floor	47.00"	<b>Finish:</b>	Type of Finish	High Solids Catalyzed Lacquer
	Seat Width	20.50"		Available Colors	150 Hard Rock Maple
	Seat Height	18.00"			154 Fine Oak
	Seat Depth	18.00"			151 Port Maple
	Arm Height from Floor	26.25"			152 Wild Cherry
	Overall Width	23.50"			447 Cayenne Maple
	Overall Depth	28.00"			448 Honey Maple
	Weight	56 lbs.			449 Select Cherry
					051 Natural
					431 Dark Cherry
					143 White Blush
					435 Classic Cherry

**Arm Frame Construction:**

Frame Material	Solid European Beech hardwood
Frame Construction	Double doweled and glued

**One Piece Seat/Back Construction:**

Frame Material	1" O.D. x 16 ga. steel tube
Back Cushion	High resilient (HR) polyurethane foam MFG-8-20, 20 lb ILD, 2.25-2.45 density
Seat Suspension	1/2" particle board
Seat Cushion	High resilient (HR) polyurethane foam MFG-8-33, 33 lb ILD, 2.5-2.7 density

**Stationary Mechanism:**

Mechanism Material	steel
Seat Angle	-7 degree

**Upholstery Details:**

Patterns Available	Fabric, vinyl, C.O.M.
--------------------	-----------------------

**Test Data:**

Fabric Tests	Consult specific fabric card
BIFMA Tests	Meets ANSI/BIFMA X5.4 - 1990 American National Standard for Office Furnishings -Lounge Seating. <b>Tests conducted in La-Z-Boy's accredited test facility.</b>
Flammability Tests	Meets BIFMA First Generation Voluntary Upholstered Furniture Flammability Standard for Business and Institutional Markets, F1-1978-revised 1980. California Bureau of Home Furnishings - Technical Bulletin 117.  Meets Flammability Requirements of California Bureau of Home Furnishings Technical Bulletin 133 when ordered with La-Z-Boy Code Red Fabrics and Vinyl's. Consult a Stryker Customer Service Representative at 1-800-STRYKER for further information.  Upholstered Furniture Action Council Class 1.

**Style LY1804/3300-000-920 Rocking Patient Chair 18"**

<b>Dimensions:</b>	Back Height from Floor	47.00"	<b>Finish:</b>	Type of Finish	High Solids Catalyzed Lacquer
	Seat Width	20.50"		Available Colors	150 Hard Rock Maple
	Seat Height	18.00"	154 Fine Oak	151 Port Maple	
	Seat Depth	18.00"	152 Wild Cherry	447 Cayenne Maple	
	Arm Height from Floor	26.25"	448 Honey Maple	449 Select Cherry	
	Overall Width	23.50"	051 Natural		
	Overall Depth	28.00"	431 Dark Cherry		
	Weight	56 lbs.	143 White Blush		
			435 Classic Cherry		

**Arm Frame Construction:**

Frame Material	Solid European Beech hardwood
Frame Construction	Double doweled and glued

**One Piece Seat/Back Construction:**

Frame Material	1" O.D. x 16 ga. steel tube
Back Cushion	High resilient (HR) polyurethane foam MFG-8-20, 20 lb ILD, 2.25-2.45 density
Seat Suspension	½" particle board
Seat Cushion	High resilient (HR) polyurethane foam MFG-8-33, 33 lb ILD, 2.5-2.7 density

**Rocker Mechanism:**

Mechanism Material	steel
Rocker Function	rocker lock out
	75 ft/lbs. of torque
Seat Angle	-2 to -20 degrees of travel

**Upholstery Details:**

Patterns Available	Fabric, vinyl, C.O.M.
--------------------	-----------------------

**Test Data:**

Fabric Tests	Consult specific fabric card
BIFMA Tests	Meets ANSI/BIFMA X5.4 - 1990 American National Standard for Office Furnishings - Lounge Seating. <b>Tests conducted in La-Z-Boy's accredited test facility.</b>
Flammability Tests	Meets BIFMA First Generation Voluntary Upholstered Furniture Flammability Standard for Business and Institutional Markets, F1-1978-revised 1980. California Bureau of Home Furnishings - Technical Bulletin 117. Meets Flammability Requirements of California Bureau of Home Furnishings Technical Bulletin 133 when ordered with La-Z-Boy Code Red Fabrics and Vinyl's. Consult a Stryker Customer Service Representative at 1-800-STRYKER for further information. Upholstered Furniture Action Council Class 1.

## Style LY2100/3300-000-940 Stationary Patient Chair 21"

<b>Dimensions:</b>	Back Height from Floor	50.00"	<b>Finish:</b>	Type of Finish	High Solids Catalyzed Lacquer
	Seat Width	20.50"		Available Colors	150 Hard Rock Maple
	Seat Height	21.00"			154 Fine Oak
	Seat Depth	18.00"			151 Port Maple
	Arm Height from Floor	29.25"			152 Wild Cherry
	Overall Width	23.50"			447 Cayenne Maple
	Overall Depth	28.00"			448 Honey Maple
	Weight	58 lbs.			449 Select Cherry
					051 Natural
					431 Dark Cherry
			143 White Blush		
			435 Classic Cherry		

**Arm Frame Construction:**

Frame Material	Solid European Beech hardwood
Frame Construction	Double doweled and glued

**One Piece Seat/Back Construction:**

Frame Material	1" O.D. x 16 ga. steel tube
Back Cushion	High resilient (HR) polyurethane foam MFG-8-20, 20 lb ILD, 2.25-2.45 density
Seat Suspension	½" particle board
Seat Cushion	High resilient (HR) polyurethane foam MFG-8-33, 33 lb ILD, 2.5-2.7 density

**Stationary Mechanism:**

Mechanism Material	steel
Seat Angle	-7 degree

**Upholstery Details:**

Patterns Available	Fabric, vinyl, C.O.M.
--------------------	-----------------------

**Test Data:**

Fabric Tests	Consult specific fabric card
BIFMA Tests	Meets ANSI/BIFMA X5.4 - 1990 American National Standard for Office Furnishings - Lounge Seating. <b>Tests conducted in La-Z-Boy's accredited test facility.</b>
Flammability Tests	Meets BIFMA First Generation Voluntary Upholstered Furniture Flammability Standard for Business and Institutional Markets, F1-1978-revised 1980. California Bureau of Home Furnishings - Technical Bulletin 117. Meets Flammability Requirements of California Bureau of Home Furnishings Technical Bulletin 133 when ordered with La-Z-Boy Code Red Fabrics and Vinyl's. Consult a Stryker Customer Service Representative at 1-800-STRYKER for further information. Upholstered Furniture Action Council Class 1.

**Style LY2104/3300-000-940 Rocking Patient Chair 21"**

<b>Dimensions:</b>	Back Height from Floor	50.00"	<b>Finish:</b>	Type of Finish	High Solids Catalyzed Lacquer
	Seat Width	20.50"		Available Colors	150 Hard Rock Maple
	Seat Height	21.00"		154 Fine Oak	
	Seat Depth	18.00"		151 Port Maple	
	Arm Height from Floor	29.25"		152 Wild Cherry	
	Overall Width	23.50"		447 Cayenne Maple	
	Overall Depth	28.00"		448 Honey Maple	
	Weight	58 lbs.		449 Select Cherry	
				051 Natural	
				431 Dark Cherry	
		143 White Blush			
		435 Classic Cherry			

**Arm Frame Construction:**

Frame Material	Solid European Beech hardwood
Frame Construction	Double doweled and glued

**One Piece Seat/Back Construction:**

Frame Material	1" O.D. x 16 ga. steel tube
Back Cushion	High resilient (HR) polyurethane foam MFG-8-20, 20 lb ILD, 2.25-2.45 density
Seat Suspension	½" particle board
Seat Cushion	High resilient (HR) polyurethane foam MFG-8-33, 33 lb ILD, 2.5-2.7 density

**Rocker Mechanism:**

Mechanism Material	steel
Rocker Function	rocker lock out 75 ft/lbs. of torque
Seat Angle	-2 to -20 degrees of travel

**Upholstery Details:**

Patterns Available	Fabric, vinyl, C.O.M.
--------------------	-----------------------

**Test Data:**

Fabric Tests	Consult specific fabric card
BIFMA Tests	Meets ANSI/BIFMA X5.4 - 1990 American National Standard for Office Furnishings - Lounge Seating. <b>Tests conducted in La-Z-Boy's accredited test facility.</b>
Flammability Tests	Meets BIFMA First Generation Voluntary Upholstered Furniture Flammability Standard for Business and Institutional Markets, F1-1978-revised 1980. California Bureau of Home Furnishings - Technical Bulletin 117. Meets Flammability Requirements of California Bureau of Home Furnishings Technical Bulletin 133 when ordered with La-Z-Boy Code Red Fabrics and Vinyl's. Consult a Stryker Customer Service Representative at 1-800-STRYKER for further information. Upholstered Furniture Action Council Class 1.



### STYLES LY1800, LY1804, LY2100, LY2104

#### PARTS REQUIRED

#### TOOLS REQUIRED

QUANTITY	PART#	DESCRIPTION
(1)	62980354-00	Base and Tilt Subassembly (LY1804 & LY2104)
(1)	62980356-00	Stationary Base Subassembly (LY1800 & LY2100)
(8)	96000417-02	Joint Connector Bolt
(8)	96000477-00	Flange Nut
(4)	96000076-07	Serrated Truss Head Screw

#5 Allen Wrench  
1/2" Wrench  
T-30 Torx Driver  
Rubber Mallet or  
Hammer w/soft cloth

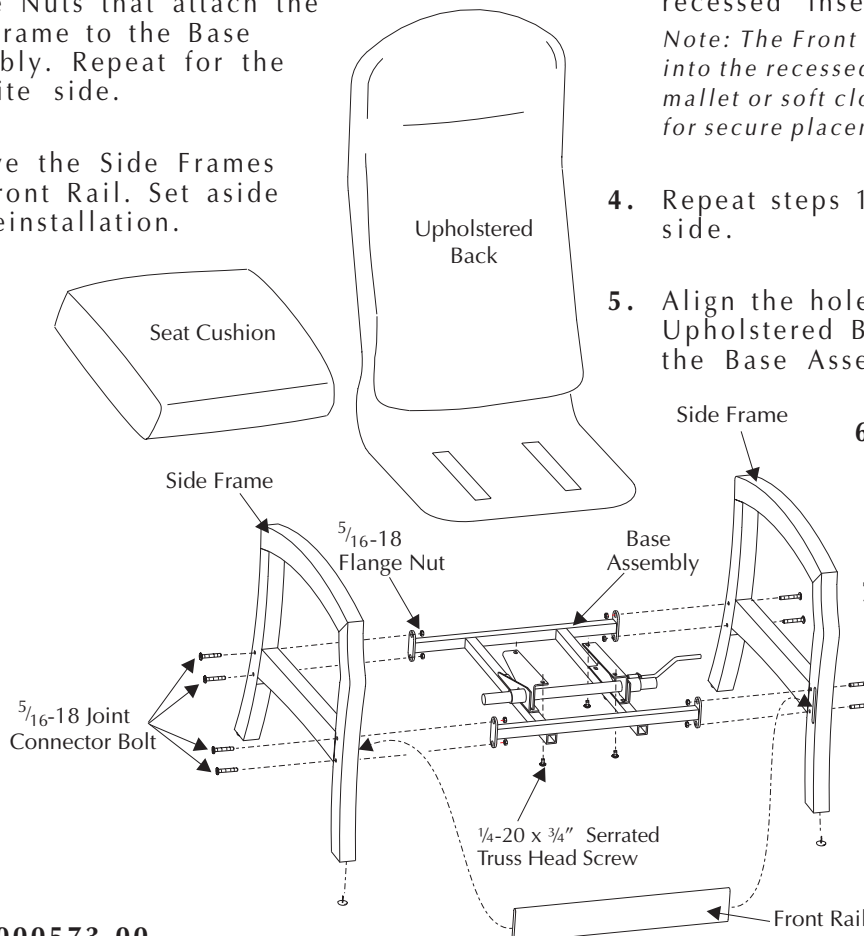
#### HOW TO REPLACE THE BASE ASSEMBLY

##### To Remove:

1. On a protected surface, place the chair on its side with the handle facing up.  
*(Handle on styles LY1804 & LY2104 only.)*
2. Locate and remove the four (4) 1/4-20 x 3/4" Serrated Truss Head screws that attach the Upholstered Back to the Base Assembly. Remove the Upholstered Back and set aside for reinstallation.
3. Remove the four (4) 5/16-18 Joint Connector Bolts and the four (4) 5/16-18 Flange Nuts that attach the Side Frame to the Base Assembly. Repeat for the opposite side.
4. Remove the Side Frames and Front Rail. Set aside for reinstallation.

##### To Replace:

1. Position one Side Frame on a protected surface. Align the holes on one side of the new Base Assembly with the four mounting holes in the Side Frame.
2. Insert the four (4) 5/16-18 Joint Connector Bolts into the Side Frame attaching it to the Base Assembly. Place the four (4) 5/16-18 Flange Nuts on the backside. Tighten these securely.
3. Place one end of the Front Rail into the recessed insert.  
*Note: The Front Rail is designed to fit tightly into the recessed insert. Tap with a rubber mallet or soft cloth and hammer, if necessary, for secure placement.*
4. Repeat steps 1 through 3 for the other side.
5. Align the hole pattern in the Upholstered Back with the holes in the Base Assembly.



6. Replace and tighten the four (4) 1/4-20 x 3/4" Serrated Truss Head screws.
7. Return chair to its upright position.

### STYLES LY1800, LY1804, LY2100, LY2104

#### PARTS REQUIRED

QUANTITY	PART#	DESCRIPTION
(1)	61990668-00L/R	Side Frame
(1)	61990044-00	Front Rail
(4)	96000417-02	Joint Connector Bolt
(4)	96000477-00	Flange Nut

#### TOOLS REQUIRED

#5 Allen Wrench  
 1/2" Wrench  
 Rubber mallet or  
 hammer w/soft cloth

### HOW TO REPLACE THE SIDE FRAME AND FRONT RAIL

#### To Remove:

1. On a protected surface, place the chair on its side with the Side Frame that is to be replaced facing up.

*Note: If replacing the Side Frame opposite the locking handle, place supports under the chair to lift the handle off the surface. This will prevent damage to the handle during replacement.*

2. Remove the four (4) 5/16-18 Joint Connector Bolts and the four (4) 5/16-18 Flange Nuts that attach the Side Frame to the Base Assembly.

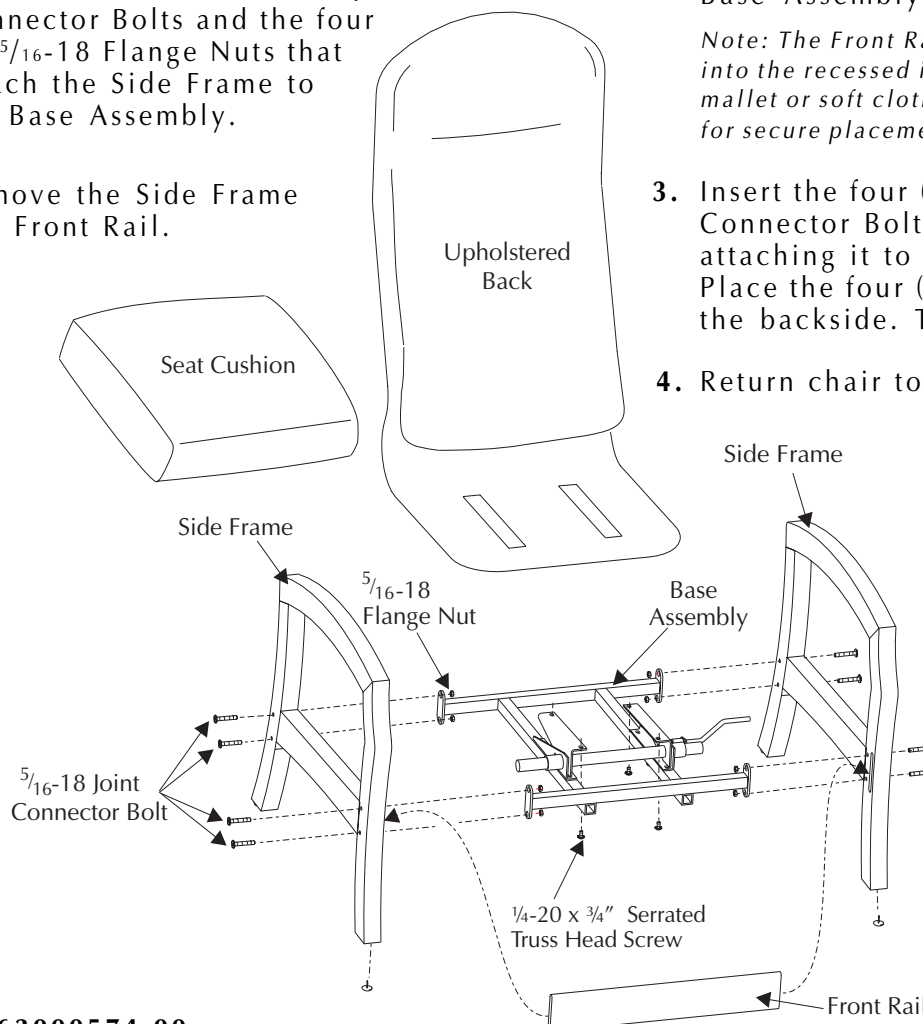
3. Remove the Side Frame and Front Rail.

#### To Replace:

1. Place the Front Rail (existing or replacement) into the recessed insert on the opposite Side Frame.
2. To install the Side Frame (existing or replacement), position the Side Frame on the chair aligning the Front Rail with the recessed insert and the four mounting holes with the holes in the Base Assembly.

*Note: The Front Rail is designed to fit tightly into the recessed insert. Tap with a rubber mallet or soft cloth and hammer, if necessary, for secure placement.*

3. Insert the four (4) 5/16-18 Joint Connector Bolts into the Side Frame attaching it to the Base Assembly. Place the four (4) 5/16-18 Flange Nuts on the backside. Tighten these securely.
4. Return chair to its upright position.



#### PARTS REQUIRED

#### TOOLS REQUIRED

QUANTITY	PART#	DESCRIPTION
(1)	64990480-00	Upholstered Back
(4)	96000076-07	Serrated Truss Head Screw (1/4 -20 x 3/4")

T-30 Torx Driver

### HOW TO REPLACE THE UPHOLSTERED BACK

#### To Remove:

1. On a protected surface, place the chair on its side with the handle facing up.  
*(Handle on styles LY1804 & LY2104 only.)*
2. Locate and remove the four (4) 1/4-20 x 3/4" Serrated Truss Head screws that attach the Upholstered Back to the Base Assembly.
3. Remove the Upholstered Back.

#### To Replace:

1. Align the hole pattern in the new Upholstered Back with the holes in the Base Assembly.
2. Replace and tighten the four (4) 1/4-20 x 3/4" Serrated Truss Head screws.
3. Return the chair to its upright position.

