

stryker[®]

LY55335/3300-000-030

Operation/Maintenance Manual

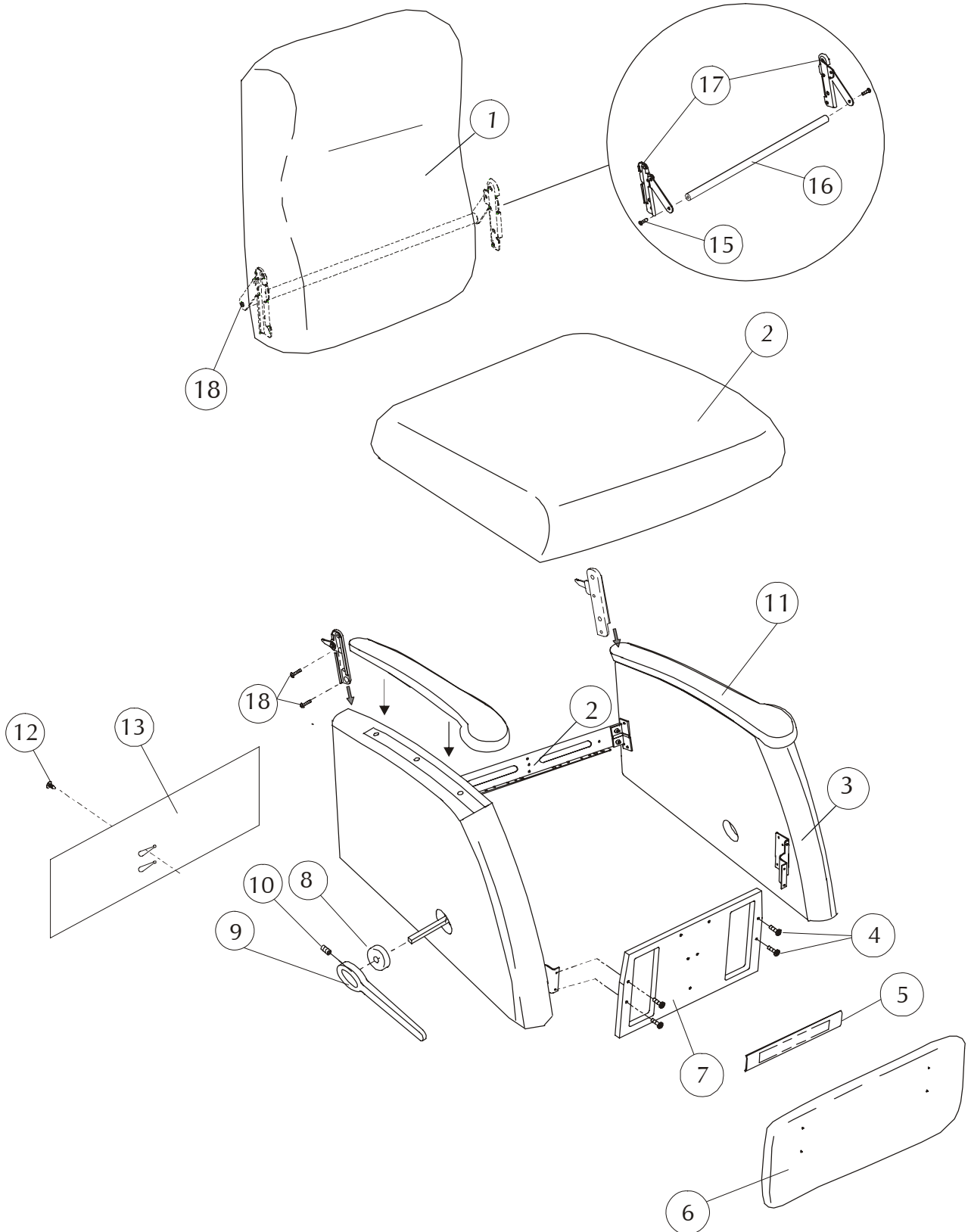
*For Parts or Technical Assistance
800-327-0770*

Table of Contents

Style LY55335/3300-000-030	2-3
Drive Rod Assembly	4-5
Support Shaft/Drive Rod Assembly	6-7
Body Assembly	8-9
Specification	10
General Information	11
Lock Down Back Assembly Instructions	

LY55335/3300-000-030 RECLINA-ROCKER

Lock Down Back Assembly





LY55335

STRYKER MEDICAL SYMMETRY 2 SERIES

Note: When replacing parts, specify style and acknowledgment numbers.

DETAIL	SYK P/N	LELAND P/N	DESCRIPTION	QTY.
1	3309-010-010	64990100-10**	Back Upholstered plus 2.0 yd cover required (LY55/56/57335)	1
2	3309-138-917	11991389-17**	Seat Upholstered plus 1.5 yd cover required	1
3	3309-709-000	64990090-00L/R*	Arm Upholstered plus 1.5 yd cover required; Closed Arm	1
	3309-909-000			
	3309-709-001	64990090-01L/R*	Arm Upholstered plus 1.5 yd cover required; Open Arm	1
	3309-909-001			
4	3300-035-702	96000357-02	¼ -20 x 1" Modified Flat Head Screw	4
5	3309-001-502	94990001-01**	Mid Ottoman Upholstered plus 0.5 yd cover required	1
6	3309-056-900	11990569-00**	Legrest Upholstered plus 1.0 yd cover required	1
7	3309-002-700	41880027-00**	Front Rail Upholstered plus 1.0 yd cover required (LY95335)	1
	3309-056-602	11990566-02**	Front Rail Upholstered plus 1.0 yd cover required (LY96335)	1
	3309-042-900	61990429-00**	Front Rail Upholstered plus 1.0 yd cover required(LY97335)	1
8	3309-001-600	95990016-00*	Escutcheon Finished	1
9	3309-900-102	95990001-02R*	Long Handle Finished, Right (Standard)	1
	3309-700-102	95990001-02L*	Long Handle Finished, Left (Option)	1
10	3300-036-200	96000362-00	¾-16 x ½ " Set Screw	1
11	3309-709-500	65050095-00L/R	Top Arm	1
	3309-909-500			
12	3300-040-900	95000409-00	Christmas Tree Fastener (01/01-present)	1
13	3308-000-328	10980003-28**	Tailgate Sewn plus 1.0 yd cover required	1
14	3307-001-303	62970422-00	Lock Down Back Assembly Kit, Standard	1
15	3300-001-301	96000013-01	¼-20 x ¾" Torx Flat head screw (pt. of det. #14)	2
16	3300-048-800	62000488-00	Lock Bar, Standard, (pt. of det. #14)	1
17	3307-907-900	92970079-00R	Back Lock Subassembly, Standard, (pt. of det. #14)	1
	3307-707-900	92970079-00L	Back Lock Subassembly, Standard, (pt. of det. #14)	1
18	3300-002-502	96000013-03	¼ -20 X 1¼ " Torx Flat Head Screw (pt. of det. #14)	4
	3303-000-501	94000005-01	Black Elastic Straps (not shown) (pt. of det. #14)	2

Features:

UB9		Black Urethane Closed Arm		
	3309-709-500	65050095-00L/R	Top Arm	1 ea
	3309-909-500			
	3309-082-000	96000820-00	Compression Dowel	10
	3309-103-400	96001034-00	#10-32 Phillips Head Screw	10
UB10		Black Urethane Open Arm		
	3309-709-500	65050095-00L/R	Top Arm	1 ea
	3309-909-500			
	3309-082-000	96000820-00	Compression Dowel	8
	3309-103-400	96001034-00	#10-32 Phillips Head Screw	8

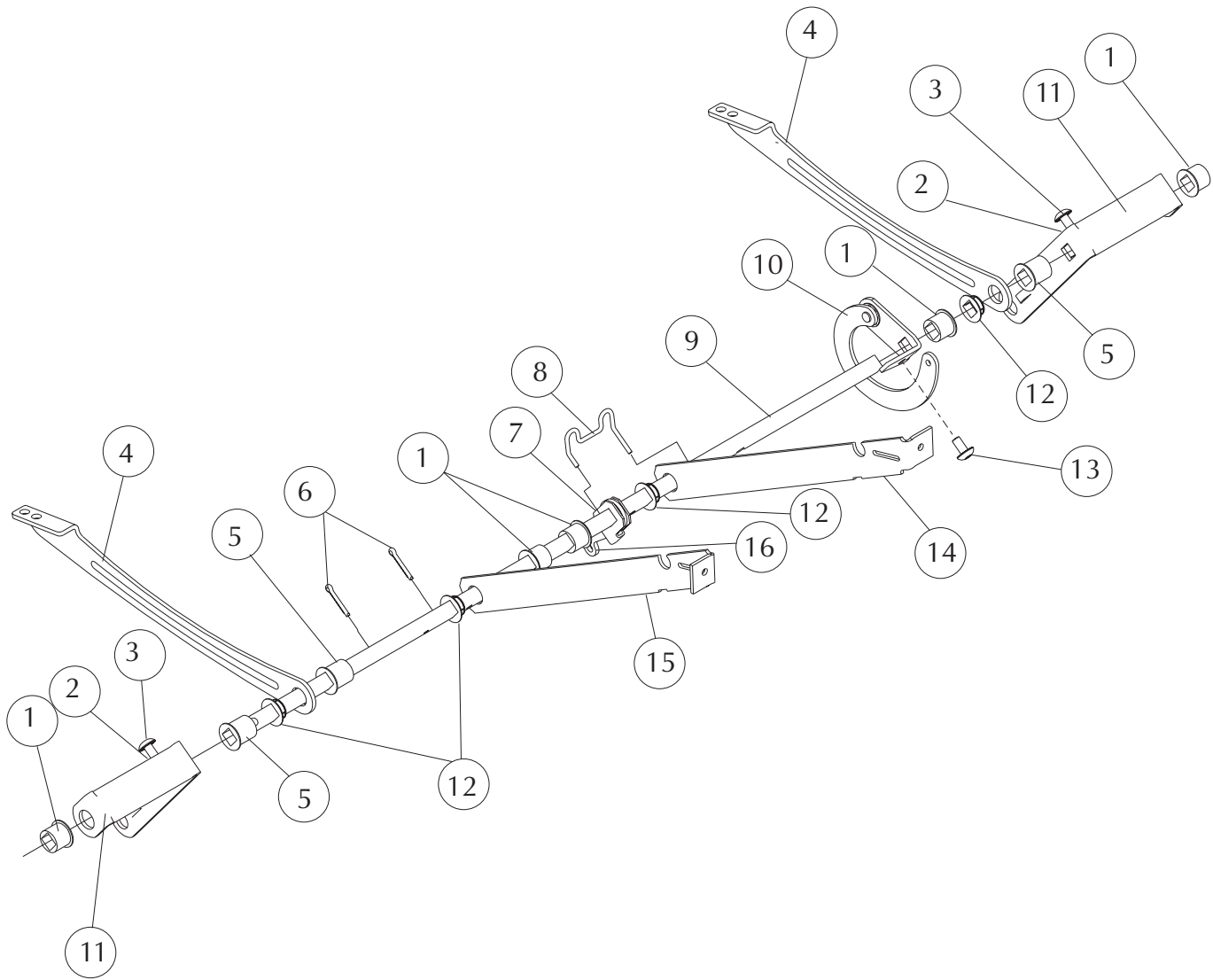
Options:

WA1		Wood Closed Arm		
	3309-719-400	61050194-00L/R*	Top Arm Finished	1 ea
	3309-919-400			
	3309-082-000	96000820-00	Compression Dowel	10
	3309-000-802	9600008-02	#10-12 x 7/8" Screw	4
	3309-000-801	9600008-01	#10-12 x 1/2" Screw	6
WA2		Wood Open Arm		
	3309-719-400	65050095-00L/R*	Top Arm Finished	1 ea
	3309-919-400			
	3309-082-000	96000820-00	Compression Dowel	8
	3309-000-802	9600008-02	#10-12 x 7/8" Screw	4
	3309-000-801	9600008-01	#10-12 x 1/2" Screw	4

- * Indicate finish or color when ordering
- ** Indicate fabric cover number when ordering
- *** Add charge for yardage to cost of kit - - - -

LY55335/3300-000-030

DRIVE ROD ASSEMBLY



LY55335

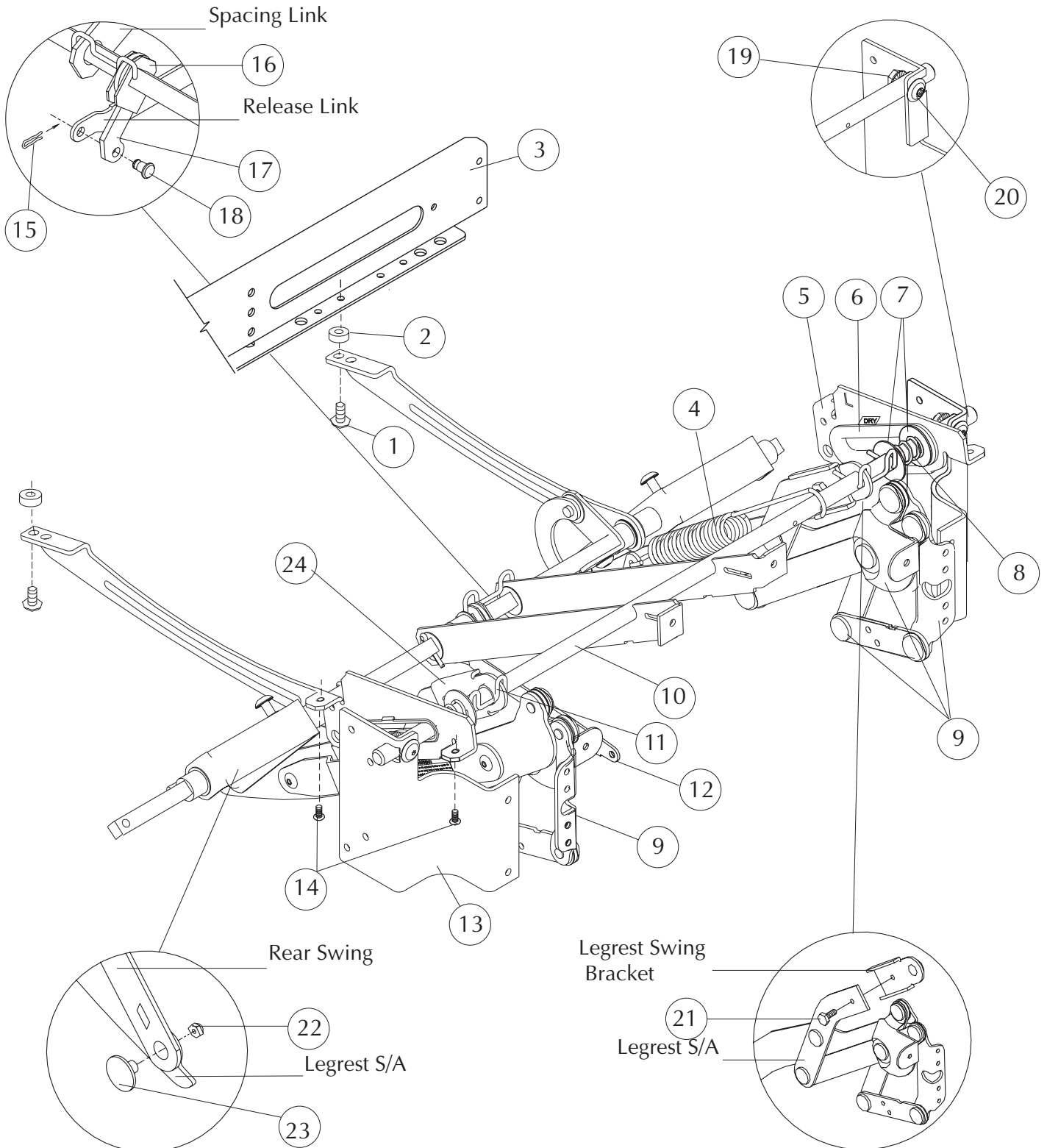
STRYKER MEDICAL SYMMETRY 2 SERIES

Note: When replacing parts, specify style and acknowledgment numbers.

DETAIL	SYK P/N	LELAND P/N	DESCRIPTION	QTY.
1	3300-012-301	95000123-01	Bearing, Medium	5
2	3300-031-900	96000319-00	Flange Nut	4
3	3300-007-607	96000076-07	1/4-20 x 3/4" Serrated Truss Head Screw	4
4	3300-027-800	72000278-00	Drive Shaft Support, Rear	2
5	3300-012-300	95000123-00	Bearing, Large	3
6	3300-004-102	96000041-02	Cotter Pin	2
7	3300-014-400	12000144-00	Trip Lever	1
8	3300-012-600	12000126-00	Retaining Ring Spacer	1
9	3307-072-505	12000725-05	Drive Rod	1
10	3307-041-600	12970416-00R	Toggle Link Subassembly	1
11	3307-029-100	12970291-00	Rear Swing Subassembly	2
12	3300-105-800	15001058-00	Nylon Bearing	4
13	3300-007-606	96000076-06	1/4-20 x 1/2" Serrated Truss Head Screw	1
14	3300-727-900	12000279-00L	Spacing Link	1
15	3300-927-900	12000279-00R	Spacing Link	1
16	3300-015-500	12000155-00	Swivel Lever	1

LY55335/3300-000-030

SUPPORT SHAFT/DRIVE ROD ASSEMBLY



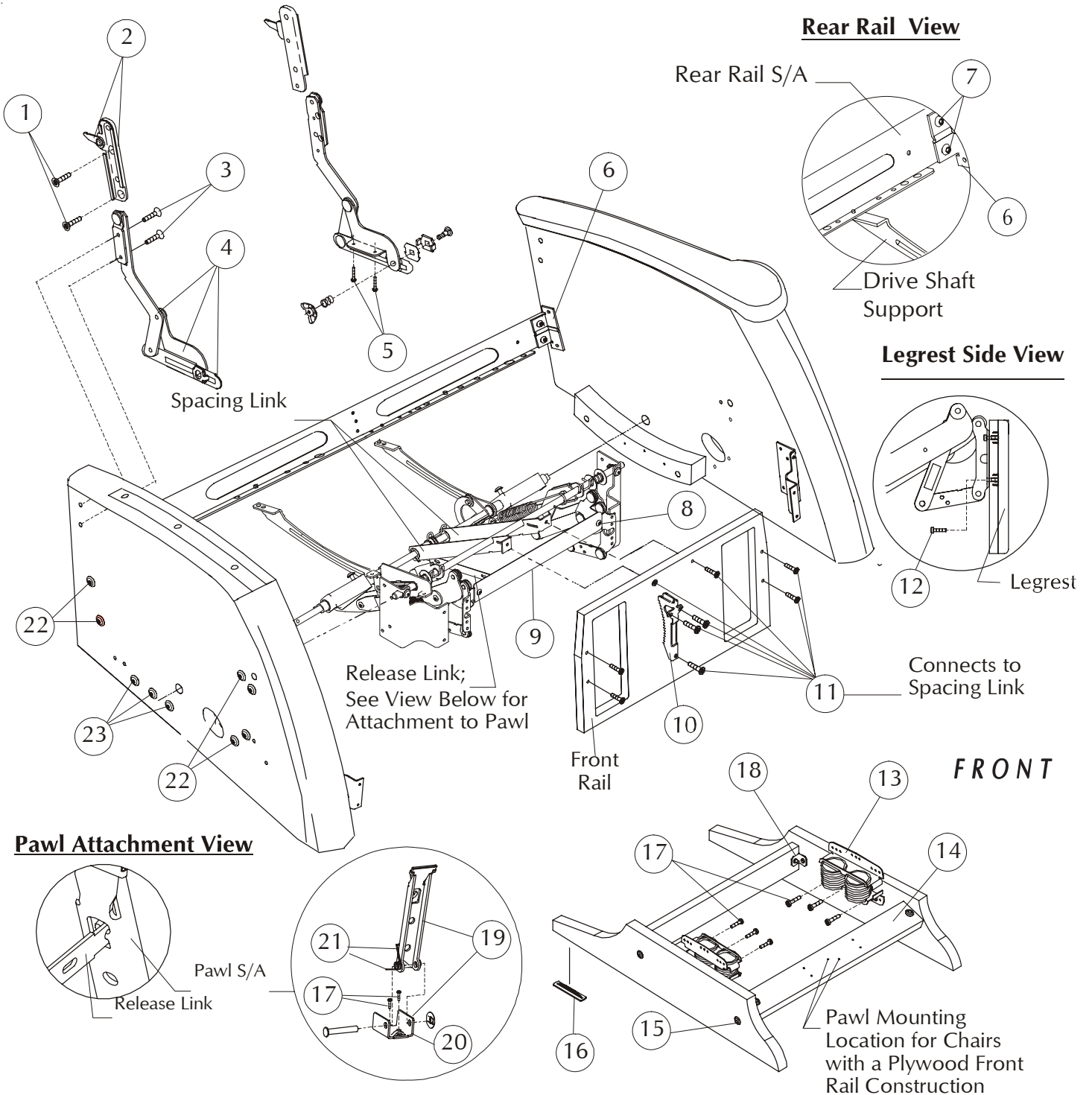
LY55335
STRYKER MEDICAL SYMMETRY 2 SERIES

Note: When replacing parts, specify style and acknowledgment numbers.

DETAIL	SYK P/N	LELAND P/N	DESCRIPTION	QTY.
1	3300-007-606	96000076-06	1/4-20 x 1/2" Serrated Truss Head Screw	2
	3300-007-604	96000076-04	1/4-20 x 1" Serrated Truss Head Screw	2
2	3300-046-803	96000468-03	Spacer	2
3	3307-034-401	12970344-01	Metal Rear Rail Subassembly	1
4	3300-069-100	92000691-00	Extension Spring	1
5	3300-713-001	12000130-01L	Front Seat Slide	1
	3300-913-001	12000130-01R	Front Seat Slide	1
6	3300-003-100	5000031-00	Slide Insert	2
7	3300-035-001	96000350-01	Friction Washer	4
8	3300-018-600	92000186-00	Spring	2
9	3307-726-301	62970263-01L	Legrest Subassembly, Reinforced	1
	3307-926-301	62970263-01R	Legrest Subassembly, Reinforced	1
10	3309-071-700	12000717-00	Support Shaft	1
11	3300-015-800	12000158-00	Spacing Clip	2
12	3300-022-800	12000228-00	Release Link	1
13	3309-722-900	12000229-00L	Front Rail Mount	1
	3309-922-900	12000229-00R	Front Rail Mount	1
14	3300-000-803	96000008-03	#10-12 x 1 1/4" Pan Head Screw	4
15	3300-015-900	22000159-00	Hair Pin Clip	1
16	3300-014-400	12000144-00	Trip Lever	1
17	3300-015-500	12000155-00	Swivel Lever	1
18	3300-016-100	12000161-00	Connecting Rivet	1
19	3300-031-900	96000319-00	Flange Nut	2
20	3300-039-800	96000398-00	1/4-20 x 15/16" Torx Truss Head Screw (Washer Head)	2
21	3300-048-900	96000489-00	1/4-20 x 1/2" Serrated Hex Head Screw	2
22	3300-028-000	96000280-00	5/16-24 Locknut	2
23	3300-005-401	16000054-01	Shoulder Bolt	2
24	3300-023-001	12000230-01	Legrest Swing Bracket	2

LY55335/3300-000-030

BODY ASSEMBLY



LY55335

STRYKER MEDICAL SYMMETRY 2 SERIES

Note: When replacing parts, specify style and acknowledgment numbers.

DETAIL	SYK P/N	LELAND P/N	DESCRIPTION	QTY.
1	3300-001-303	96000013-03	¼ -20 x 1¼ " Torx Flat Head Screw	4
2	3309-707-900	92970079-00L/R	Back Bracket Subassembly	1 ea
	3309-907-900			
3	3300-001-302	96000013-02	¼ -20 x 1" Torx Flat Head Screw	4
4	3307-709-002	12970090-02L/R	Seat Swing Subassembly	1 ea
	3307-909-002			
5	3300-000-803	96000008-03	#10-12 x 1¼ " Torx Pan Head Screw	4
6	3300-027-301	12000273-01	Rear Rail Bracket	2
7	3300-048-901	96000489-01	¼ -20 x 1 ³ / ₁₆ " Serrated Hex Head Screw	4
8	3300-026-100	96000261-00	¼ -20 x 3 ³ / ₈ " Torx Truss Head Screw	2
9	3300-010-601	12000106-01	Center Ottoman	1
10	3300-102-600	12001026-00	Pawl Rack	1
11	3300-035-702	96000357-02	¼ -20 x 1" Modified Torx Flat Head Screw	9
12	3300-001-702	96000017-02	#10-24 x ¾ " Torx Pan Head Screw	4
13	3300-020-800	92000208-00	Rocker Spring; Dual Restricted	2
14	3309-058-801	11990588-01*	Base Assembly, Finished	1
15	3300-039-802	196000398-02	¼ -20 x 1¼ " Torx Truss Head Screw	8
16	3300-047-500	96000475-00	Base Glide	4
17	3300-000-802	96000008-02	#10-12 x 7 ⁷ / ₈ " Torx Pan Head Screw	14
18	3304-027-000	12000270-00	Corner Bracket	4
19	3307-009-900	42970099-00	Pawl Subassembly	1
20	3309-102-600	12001026-00	Pawl Bracket (part of det. 19)	1
21	3300-014-100	12000141-00	Dual Torsion Spring (part of det. 19)	1
22	3300-039-801	96000398-01	¼ -20 x 1 ¹¹ / ₁₆ " Torx Truss Head Screw	10
23	3309-003-302	96000033-02	#10-12 x 1½ " Torx Truss Head Screw	6

*Indicate finish or color when ordering.

Style LY55335/3300-000-030

Dimensions:	Back Height from Floor	43.50"																												
	Back Height from Seat	29.50"																												
	Seat Width	22.00"																												
	Seat Height	19.88"																												
	Seat Depth	19.75"																												
	Arm Height from Floor	26.25"																												
	Overall Width	32.00"																												
	Overall Depth	39.00"																												
	Reclined Depth	52.00"																												
	Reclined Depth, legrest extended	68.00"																												
	Weight	100 lbs.																												
Finish:	Type of Finish	High Solids Catalyzed Lacquer																												
	Available Colors	<table border="0"> <tr> <td>150</td> <td>Hard Rock Maple</td> <td>051</td> <td>Natural</td> </tr> <tr> <td>154</td> <td>Fine Oak</td> <td>431</td> <td>Dark Cherry</td> </tr> <tr> <td>151</td> <td>Port Maple</td> <td>143</td> <td>White Blush</td> </tr> <tr> <td>152</td> <td>Wild Cherry</td> <td>435</td> <td>Classic Cherry</td> </tr> <tr> <td>447</td> <td>Cayenne Maple</td> <td></td> <td></td> </tr> <tr> <td>448</td> <td>Honey Maple</td> <td></td> <td></td> </tr> <tr> <td>449</td> <td>Select Cherry</td> <td></td> <td></td> </tr> </table>	150	Hard Rock Maple	051	Natural	154	Fine Oak	431	Dark Cherry	151	Port Maple	143	White Blush	152	Wild Cherry	435	Classic Cherry	447	Cayenne Maple			448	Honey Maple			449	Select Cherry		
150	Hard Rock Maple	051	Natural																											
154	Fine Oak	431	Dark Cherry																											
151	Port Maple	143	White Blush																											
152	Wild Cherry	435	Classic Cherry																											
447	Cayenne Maple																													
448	Honey Maple																													
449	Select Cherry																													
Frame Construction:	Frame Material	Furniture grade plywood and hardwood																												
	Frame Construction	Double doweled and glued																												
	Arm Material	Molded Maple innerplies with Northern Red Oak face and back																												
Seat Construction:	Frame Material	Hardwood																												
	Frame Construction	Double doweled and glued																												
	Suspension	Sinuous wire springs, crossbrace wire and composition pad																												
	Seat Foam	Polyurethane foam MFG-30-24-1.80, 24 lb ILD, 1.80-1.90 density																												
Back Construction:	Frame Material	Hardwood																												
	Frame Construction	Double doweled and glued																												
	Suspension	Sinuous wire springs, crossbrace wire and composition pad																												
	Foam Type	Polyurethane foam MFG-7-20, 20 lb ILD, 1.0-1.25 density																												
Upholstery Details:	Patterns Available	Fabric, vinyl, C.O.M.																												
Test Data:	Fabric Tests	Consult specific fabric card																												
	BIFMA Tests	Meets ANSI/BIFMA X5.4 - 1990 American National Standard for Office Furnishings -Lounge Seating. Tests conducted in accredited test facility.																												
	Flammability Tests	Meets BIFMA First Generation Voluntary Upholstered Furniture Flammability Standard for Business and Institutional Markets, F1-1978-revised 1980. California Bureau of Home Furnishings - Technical Bulletin 117. Meets Flammability Requirements of California Bureau of Home Furnishings Technical Bulletin 133 when ordered with La-Z-Boy Code Red Fabrics and Vinyl's. Consult a La-Z-Boy Customer Service Representative for further information.																												
		Upholstered Furniture Action Council Class 1.																												

Three Piece Rear Rail:

Four Hex Head Screws are used to attach the Metal Rear Rail to the Rear Rail Brackets. The screws are installed in a counterclockwise direction starting with the upper slot in the left (when sitting). Do not tighten this screw completely until the other three screws are installed and fastened firmly. The upper right, lower right and lower left screws are tightened when they are installed.

Lock Down Back Service Kit

62970422-00 includes:

- | | | |
|-----|-------------------------------------|--------------|
| (1) | Back Bracket Assembly | 92970079-00L |
| (1) | Back Bracket Assembly | 92970079-00R |
| (1) | Lock Bar | 62000488-00 |
| (2) | 1/4-20 x 3/4" Torx Flat Head Screws | 96000013-01 |
| (2) | Black Elastic Straps | 94000005-01 |
| (1) | Assembly Instructions | 63000615-01 |