

stryker[®]
Medical

LY95/96/97/3335/3300/6000 Series

Operations/Maintenance Manual

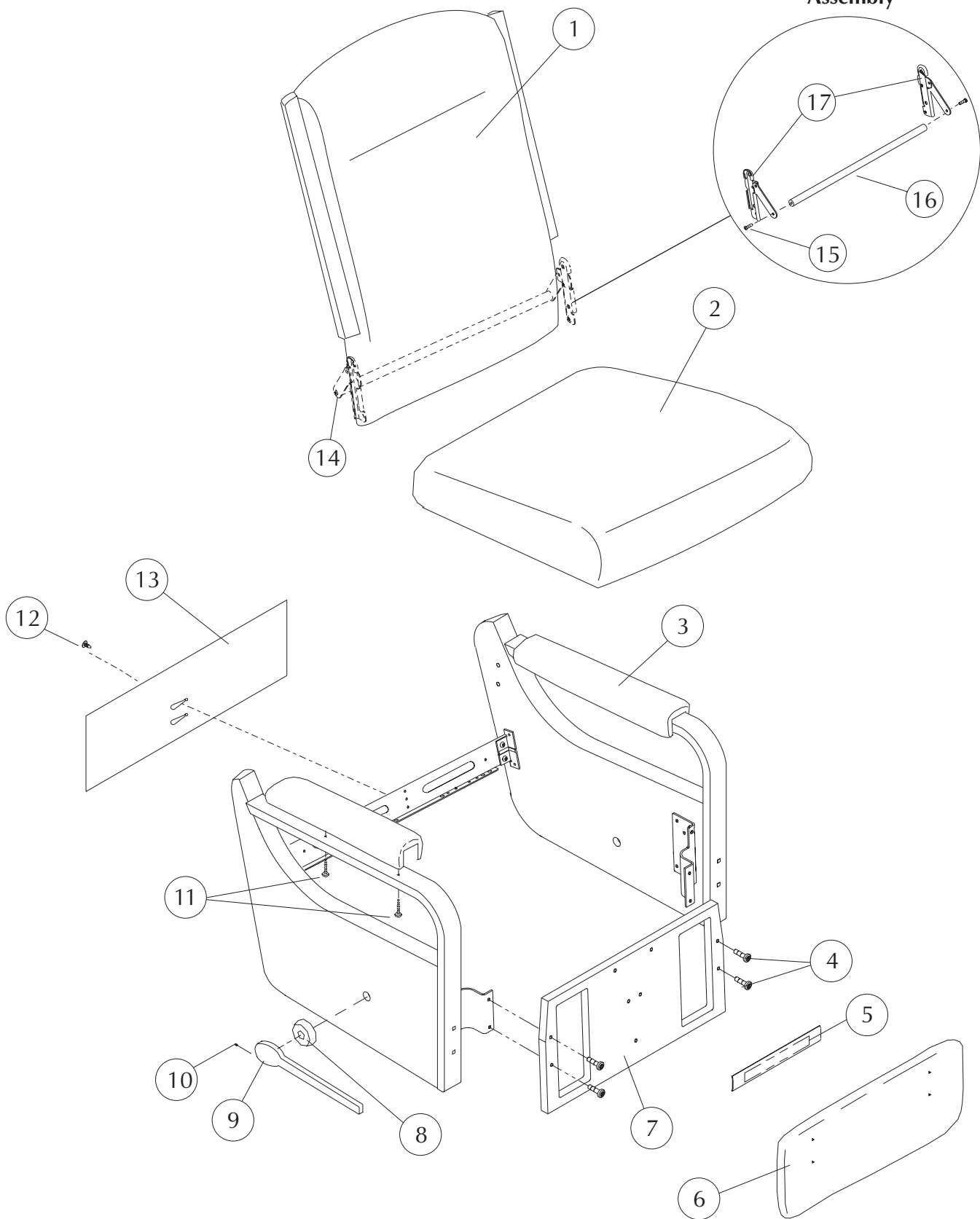
For Parts or Technical Assistance
800-327-0770

LY95/96/97 335/3300-000-600 Series

Table of Contents

Style LY95335/3300-000-601	2-3
LY95335/3300-000-601 Drive Rod Assembly (before 1/5/04)	4-5
LY95335/3300-000-601 Drive Rod Assembly (after 1/5/04)	6-7
LY95335/3300-000-601 Support Shaft/Drive Rod Assembly (before 1/5/04)	8-9
LY95335/3300-000-601 Support Shaft/Drive Rod Assembly (after 1/5/04)	10-11
LY95335/3300-000-601 Body Assembly	12-13
Specification LY95335/3300-000-601	14
General Information	15
Lock Down Back Assembly Instructions	

**Lock Down Back
Assembly**



LY95335 / 3300-000-601

LY95335

STRYKER MEDICAL HEALTHCARE SERIES

Note: When replacing parts, specify style and acknowledgment numbers.

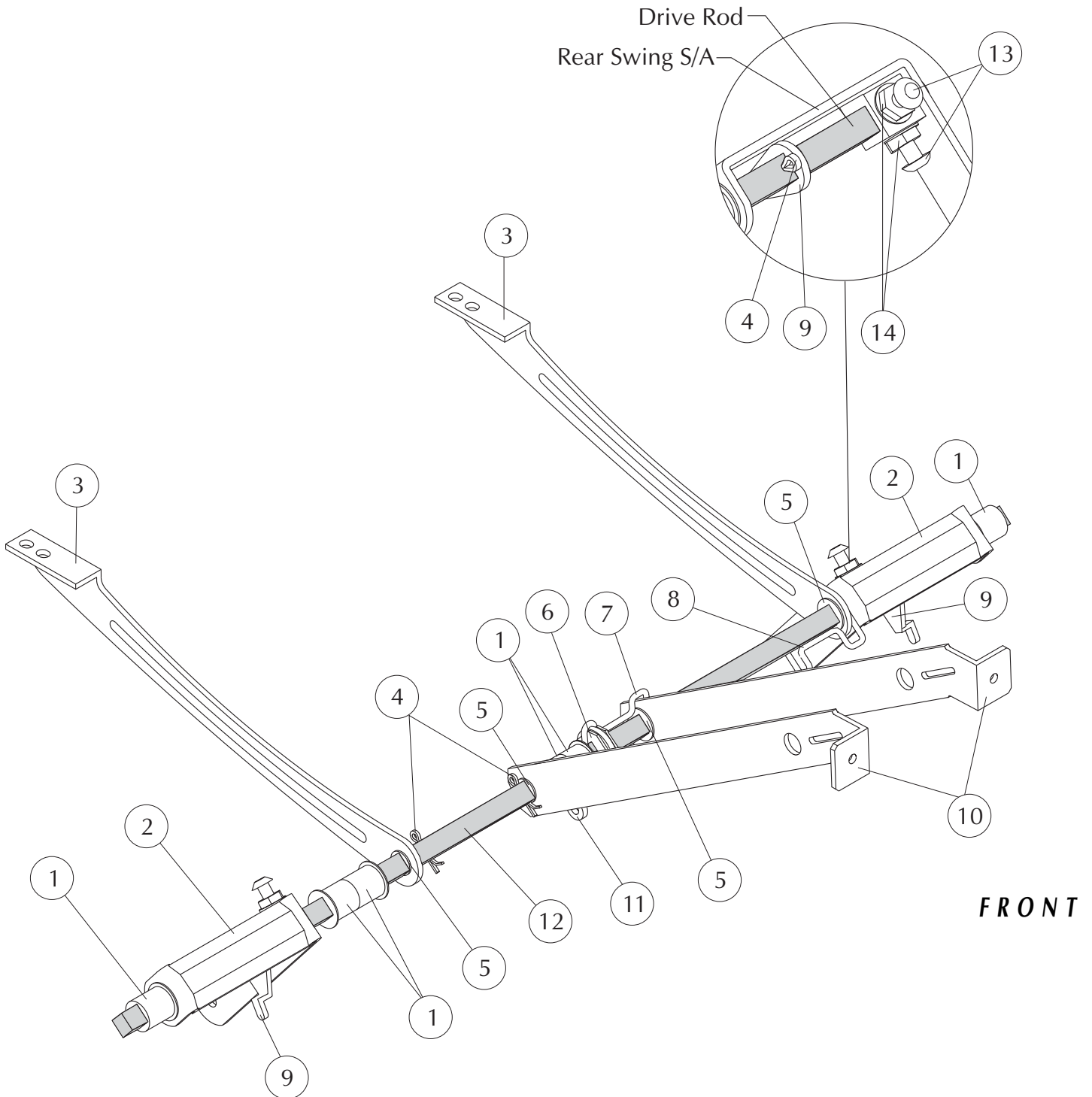
DETAIL#	SYK PN	LZB PN	DESCRIPTION	QUANTITY
1	3309-015-009	11990150-09**	Back Upholstered plus 2.5 yd cover required (LY95/96335)	1
	3309-015-010	11990150-10**	Back Upholstered plus 2.5 yd cover required (LY97335)	1
2	3309-138-917	11991389-17**	Seat Upholstered plus 1.0 yd cover required	1
3	3309-001-502	14990015-02**	Top Arm Pad upholstered plus 1.0 yd cover required	2
4	3300-035-702	96000357-02	1/4-20 x 1" Modified Flat Head Screw	4
5	3309-000-101	94990001-01**	Mid Ottoman Upholstered plus 0.5 yd cover required	1
6	3309-056-801	11990568-01**	Legrest Upholstered plus 1.0 yd cover required	1
7	3309-060-501	11990605-01**	Front rail Upholstered plus 1.0 yd cover required (LY95335)	1
	3309-056-602	11990566-02**	Front rail Upholstered plus 1.0 yd cover required (LY96335)	1
	3309-042-900	61990429-00**	Front rail Upholstered plus 1.0 yd cover required (LY97335)	1
8	3309-001-600	95990016-00*	Escutcheon Finished	1
9	3309-900-102	95990001-02R*	Long handle Finished, right (standard)	1
	3309-700-102	95990001-02L*	Long handle Finished, left (option)	1
10	3300-036-200	96000362-00	3/8-16 x 1/2" Set Screw	1
11	3300-002-502	96000025-02	1/4-20 x 1 1/4" Torx Truss Head Screw	4
12	3300-040-900	95000409-00	Christmas Tree Fastener	1
13	3308-000-328	10980003-28**	Tailgate Sewn plus 0.5 yd cover required	1
14	3307-001-303	KIT70013-03	Lock Down Back Assembly Kit, Standard	1
15	3300-001-301	96000013-01	1/4-20 x 3/4" Torx Flat head screw (pt. of det. #14)	2
16	3300-048-800	62000488-00	Lock Bar, Standard, (pt. of det. #14)	1
17	3307-907-900	92970079-00R	Back Lock Subassembly, Standard, (pt. of det. #14)	1
	3307-707-900	92970079-00L	Back Lock Subassembly, Standard, (pt. of det. #14)	1
	3303-000-501	94000005-01	Black Elastic Straps (not shown) (pt. of det. #14)	2

* Indicate finish or color when ordering
 ** Indicate fabric cover number when ordering
 *** Add charge for yardage to cost of kit - - - -

LY95335 / 3300-000-601

DRIVE ROD ASSEMBLY

FOR STYLES PRODUCED BEFORE 1/05/04



LY95335
**STRYKER MEDICAL HEALTHCARE SERIES
DRIVE ROD ASSEMBLY**

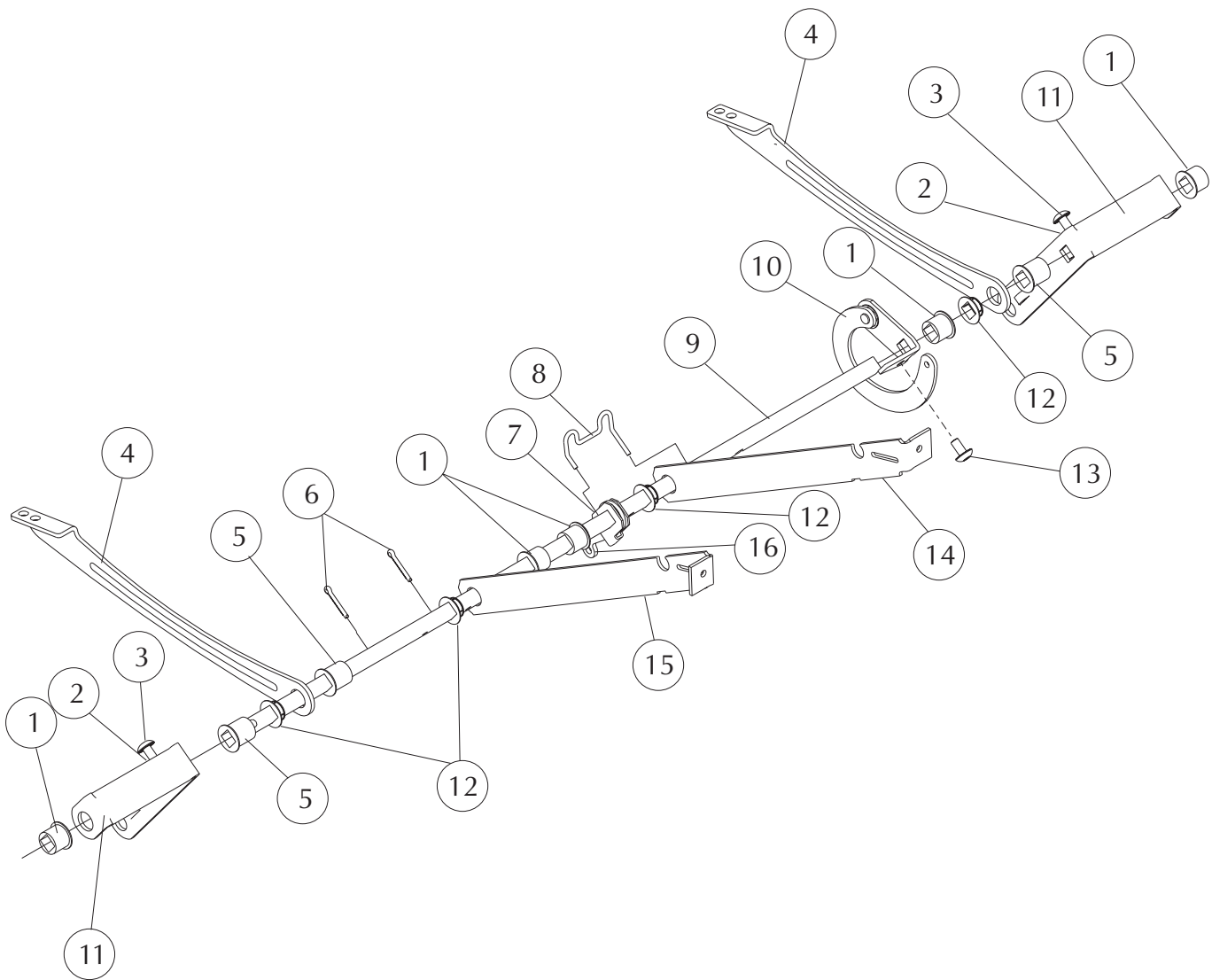
Note: When replacing parts, specify style and acknowledgment numbers.

DETAIL#	SYK PN	LZB PN	DESCRIPTION	QUANTITY
1	3300-012-301	95000123-01	Bearing, medium	6
2	3307-029-100	12970291-00	Rear Swing Subassembly	2
3	3300-027-800	72000278-00	Drive Shaft Support, rear	2
4	3300-004-102	96000041-02	Cotter Pin	4
5	3300-105-800	15001058-00	Nylon Bearing	4
6	3300-014-400	12000144-00	Trip Lever	1
7	3300-716-700	12000167-00L	Retaining Ring Spacer	1
8	3300-012-600	12000126-00	Retaining Spacer	1
9	3300-104-800	12001048-00	Toggle Lever	2
10	3300-712-500	12000125-00L	Spacing Link	1
	3300-912-500	12000125-00R	Spacing Link	1
11	3300-015-500	12000155-00	Swivel Lever	1
12	3304-016-601	12000166-01	Drive Rod	1
13	3300-007-607	96000076-07	1/4-20 x 3/4" Serrated Truss Head Screw	4
14	3300-031-900	96000319-00	Flange Nut	4

LY95335/3300-000-601

DRIVE ROD ASSEMBLY

FOR STYLES PRODUCED AFTER 1/05/04



STRYKER MEDICAL HEALTHCARE SERIES

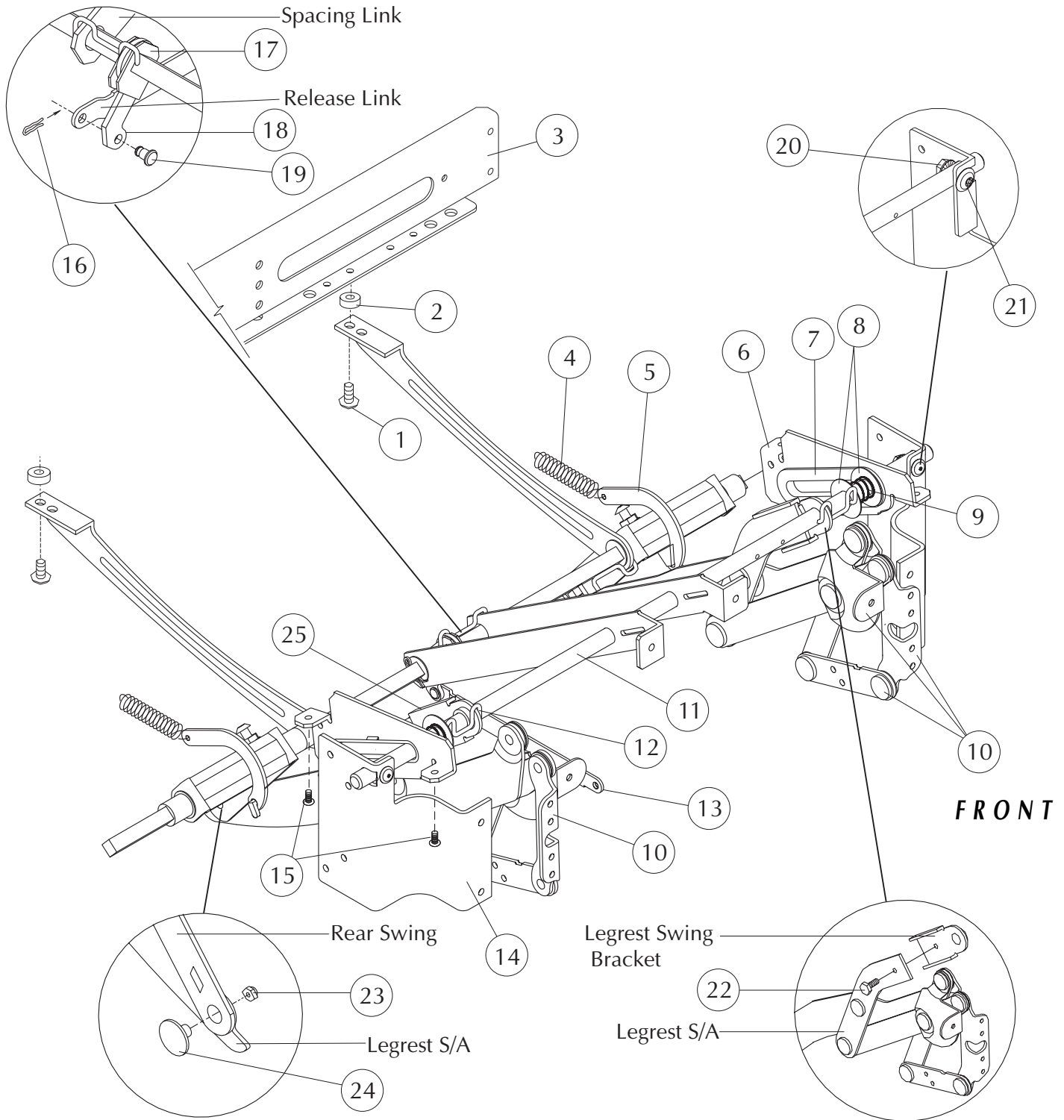
Note: When replacing parts, specify style and acknowledgment numbers.

DETAIL#	SYK PN	LZB PN	DESCRIPTION	QUANTITY
1	3300-012-301	95000123-01	Bearing, medium	5
2	3300-031-900	96000319-00	Flange Nut	4
3	3300-007-607	96000076-07	1/4-20 x 3/4" Serrated Truss Head Screw	4
4	3300-027-800	72000278-00	Drive Shaft Support, rear	2
5	3300-012-300	95000123-00	Bearing, Large	3
6	3300-004-102	96000041-02	Cotter Pin	4
7	3300-014-400	12000144-00	Trip Lever	1
8	3300-716-700	12000167-00L	Retaining Ring Spacer	1
9	3300-071-501	12000715-01	Drive Rod	1
10	3307-937-400	12970374-00R	Toggle Link Subassembly	1
11	3307-029-100	12970291-00	Rear Swing Subassembly	2
12	3300-105-800	15001058-00	Nylon Bearing	4
13	3300-007-606	96000076-06	1/4-20 x 1/2" Serrated Truss Head Screw	1
14	3300-727-900	12000279-00L	Spacing Link	1
15	3300-927-900	12000279-00R	Spacing Link	1
16	3300-015-500	12000155-00	Swivel Lever	1

LY95335/3300-000-601

SUPPORT SHAFT/DRIVE ROD ASSEMBLY

FOR STYLES PRODUCED BEFORE 1/05/04



LY95335
**STRYKER MEDICAL HEALTHCARE SERIES
SUPPORT SHAFT/DRIVE ROD ASSEMBLY**

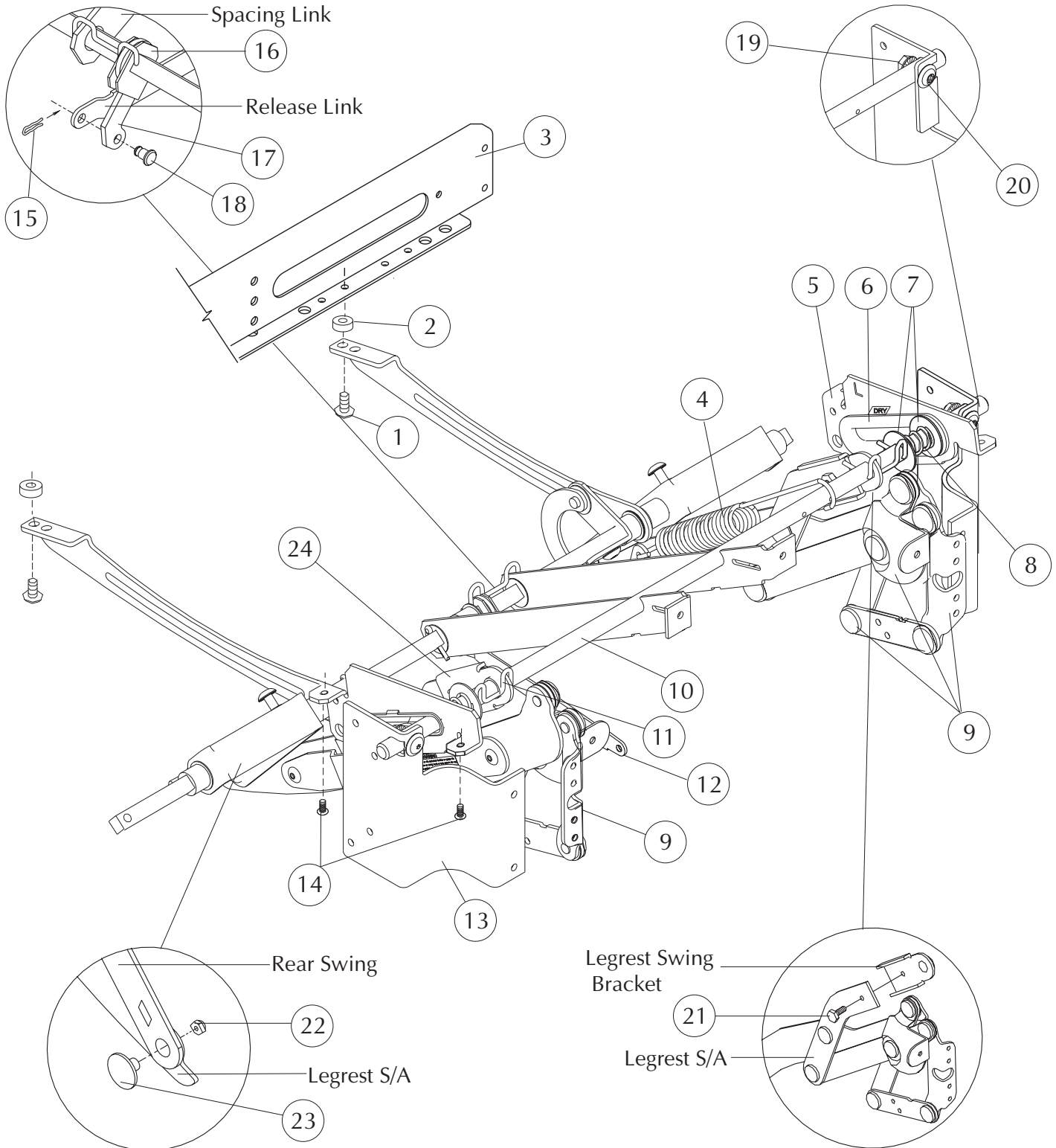
Note: When replacing parts, specify style and acknowledgment numbers.

DETAIL#	SYK PN	LZB PN	DESCRIPTION	QUANTITY
1	3300-007-604	96000076-04	1/4-20 x 1" Serrated Truss Head Screw	2
2	3300-046-803	96000468-03	Spacer (01/01-present)	2
3	3307-034-401	12970344-01	Metal Rear Rail Subassembly	1
4	3300-105-901	92001059-01	Extension Spring	2
5	3300-104-900	12001049-00	Toggle Link	2
6	3300-713-001	12000130-01L	Front Seat Slide	1
	3300-913-001	12000130-01R	Front Seat Slide	1
7	3300-003-100	15000031-00	Slide Insert	2
8	3300-035-001	96000350-01	Friction Washer	4
9	3300-018-600	92000186-00	Spring	2
10	3307-726-301	62970263-01L	Legrest Subassembly, Reinforced	1
	3307-926-301	62970263-01R	Legrest Subassembly, Reinforced	1
11	3304-016-500	12000165-00	Support Shaft	1
12	3300-015-800	12000158-00	Spacing Clip	2
13	3300-022-800	12000228-00	Release Link	1
14	3300-723-400	12000234-00L	Offset Front Rail Mount	1
	3300-923-400	12000234-00R	Offset Front Rail Mount	1
15	3300-000-803	96000008-03	#10-12 x 1 1/4" Pan Head Screw	4
16	3300-015-900	22000159-00	Hair Pin Clip	1
17	3300-014-400	12000144-00	Trip Lever	1
18	3300-015-500	12000155-00	Swivel Lever	1
19	3300-016-100	12000161-00	Connecting Rivet	1
20	3300-031-900	96000319-00	Flange Nut	2
21	3300-039-800	96000398-00	1/4-20 x 15/16" Torx Truss Head Screw (washer head)	2
22	3300-048-900	96000489-00	1/4-20 x 1/2" Serrated Hex Head Screw	2
23	3300-028-000	96000280-00	5/16 - 24 Locknut	2
24	3300-005-401	16000054-01	Shoulder Bolt	2
25	3300-023-001	12000230-01	Legrest Swing Bracket	2

LY95335/3300-000-601

SUPPORT SHAFT/DRIVE ROD ASSEMBLY

FOR STYLES PRODUCED AFTER 1/05/04

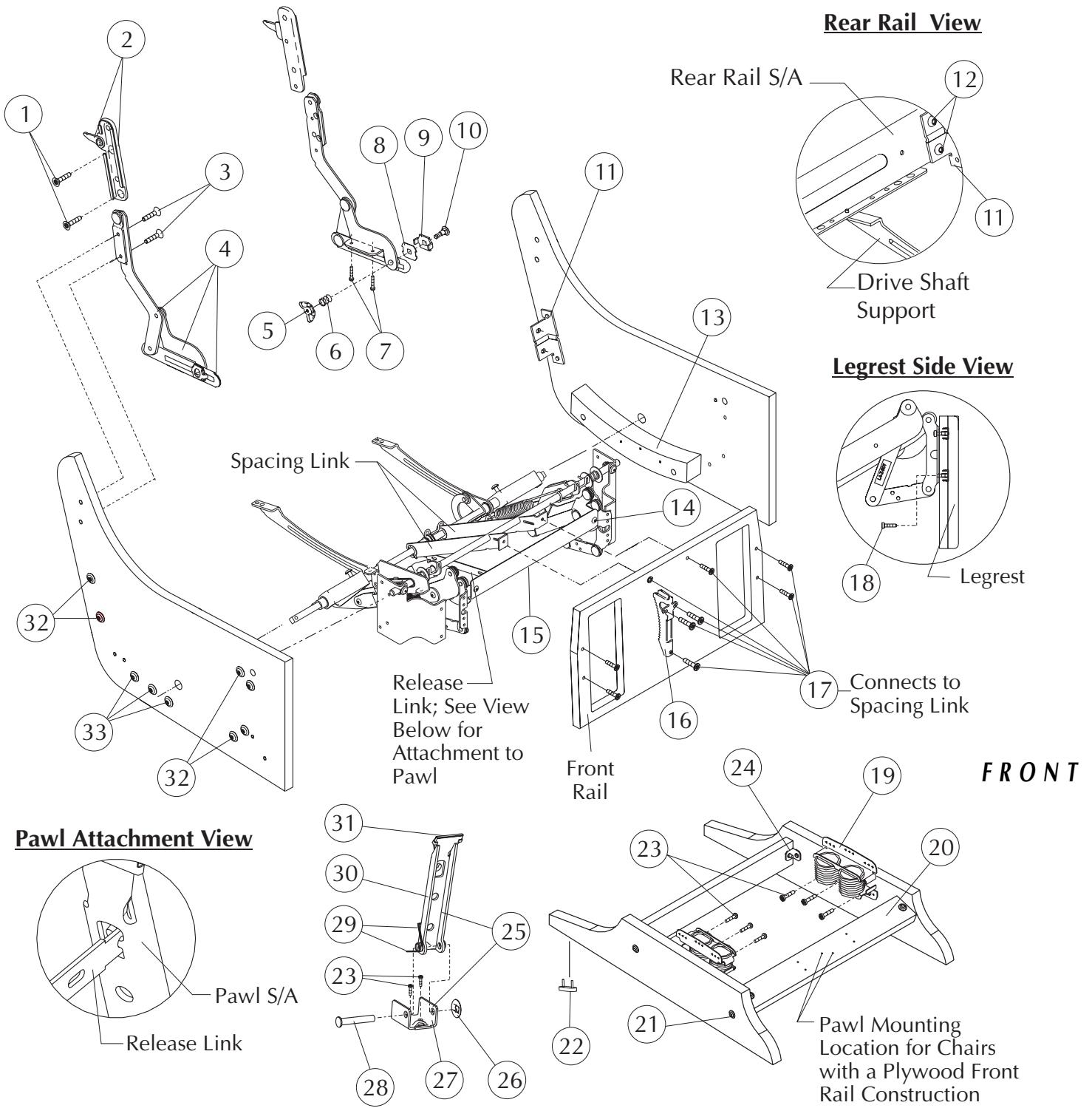


STRYKER MEDICAL HEALTHCARE SERIES

Note: When replacing parts, specify style and acknowledgment numbers.

DETAIL#	SYK PN	LZB PN	DESCRIPTION	QUANTITY
1	3300-007-604	96000076-04	1/4-20 x 1" Serrated Truss Head Screw	2
2	3300-046-803	96000468-03	Spacer (01/01-present)	2
3	3307-034-401	12970344-01	Metal Rear Rail Subassembly	1
4	3300-069-100	92000691-00	Extension Spring	1
5	3300-713-001	12000130-01L	Front Seat Slide	1
	3300-913-001	12000130-01R	Front Seat Slide	1
6	3300-003-100	15000031-00	Slide Insert	2
7	3300-035-001	96000350-01	Friction Washer	4
8	3300-018-600	92000186-00	Spring	2
9	3307-726-301	62970263-01L	Legrest Subassembly, Reinforced	1
	3307-926-301	62970263-01R	Legrest Subassembly, Reinforced	1
10	3304-016-500	12000165-00	Support Shaft	1
11	3300-015-800	12000158-00	Spacing Clip	2
12	3300-022-800	12000228-00	Release Link	1
13	3300-723-400	12000234-00L	Offset Front Rail Mount	1
	3300-923-400	12000234-00R	Offset Front Rail Mount	1
14	3300-000-803	96000008-03	#10-12 x 1 1/4" Pan Head Screw	4
15	3300-015-900	22000159-00	Hair Pin Clip	1
16	3300-014-400	12000144-00	Trip Lever	1
17	3300-015-500	12000155-00	Swivel Lever	1
18	3300-016-100	12000161-00	Connecting Rivet	1
19	3300-031-900	96000319-00	Flange Nut	2
20	3300-039-800	96000398-00	1/4-20 x 15/16" Torx Truss Head Screw (washer head)	2
21	3300-048-900	96000489-00	1/4-20 x 1/2" Serrated Hex Head Screw	2
22	3300-028-000	96000280-00	5/16 - 24 Locknut	2
23	3300-005-401	16000054-01	Shoulder Bolt	2
24	3300-023-001	12000230-01	Legrest Swing Bracket	2

LY95335
BODY ASSEMBLY



LY95335

**STRYKER MEDICAL HEALTHCARE SERIES
BODY ASSEMBLY**

Note: When replacing parts, specify style and acknowledgment numbers.

DETAIL#	SYK PN	LZB PN	DESCRIPTION	QUANTITY
1	3300-001-303	96000013-03	1/4-20 x 1 1/4" Torx Flat Head Screw	4
2	3307-707-000	92970070-00L	Back Bracket Subassembly	1
	3307-907-000	92970070-00R	Back Bracket Subassembly	1
3	3300-001-302	96000013-02	1/4-20 x 1" Torx Flat Head Screw	4
4	3307-709-002	12970090-02L	Seat Swing Subassembly	1
	3307-909-002	12970090-02R	Seat Swing Subassembly	1
5	3300-039-000	96000390-00	Wing Nut (part of det. #4)	2
6	3300-065-400	92000654-00	Compression Spring (part of det. #4)	2
7	3300-000-803	96000008-03	#10-12 x 1 1/4" Torx Pan Head Screw	4
8	3300-003-500	16000035-00	Friction Washer (Part of det. #4)	6
9	3300-009-600	12000096-00	Spur Washer (Part of det. #4)	2
10	3300-001-400	96000014-00	5/16-18 x 1 1/2" Carriage Bolt (Part of det. #4)	2
11	3300-027-301	12000273-01	Rear Rail Bracket (01/01-present)	2
12	3300-048-901	96000489-01	1/4-20 x 13/16" Serrated Hex Head Screw	4
13	3309-700-100	11090001-00L	Rocker Block; applied w/2" dowels, #91000030-04	1
	3309-900-100	11090001-00R	Rocker Block; applied w/2" dowels, #91000030-04	1
14	3300-026-100	96000261-00	1/4-20 x 3/8" Torx Truss Head Screw	2
15	3300-010-601	12000106-01	Center Ottoman	1
16	3300-102-600	12001026-00	Pawl Rack	1
17	3300-035-702	96000357-02	1/4-20 x 1" Modified Torx Flat Head Screw	9
18	3300-001-702	96000017-02	10-24 x 3/4" Torx Pan Head Screw	4
19	3300-020-800	92000208-00	Rocker Spring; dual restricted	2
20	3309-058-801	11990588-01*	Base Assembly, finished	1
21	3300-039-802	96000398-02	1/4-20 x 1 1/4" Torx Truss Head Screw	8
22	3300-047-500	96000475-00	Glide	4
23	3300-000-802	96000008-02	#10-12 x 7/8" Torx Pan Head Screw	14
24	3304-027-000	12000270-00	Corner Bracket	4
25	3307-009-900	42970099-00	Pawl Subassembly	1
26	3300-027-101	96000271-01	5/16" Speed Nut (Part of det. #25)	1
27	3300-016-000	12000160-00	Pawl Bracket (Part of det. #25)	1
28	3300-004-105	16000041-05	1 7/8" Clevis pin (Part of det. #25)	1
29	3300-014-100	12000141-00	Dual torsion spring (part of det. #25)	1
30	3300-015-400	12000154-00	Pawl (Part of det. #25)	1
31	3300-025-700	12000257-00	Pawl cap (Part of det. #25)	1
32	3300-039-801	96000398-01	1/4-20 x 11/16" torx truss head screw	12
33	3300-003-306	96000033-06	#10-12 x 1 1/4" torx truss head screw	6

* Indicate finish or color when ordering.

Style LY95335/3300-000-601

Dimensions:	Back Height from Floor	41.75"																												
	Back Height from Seat	29.00"																												
	Seat Width	21.00"																												
	Seat Height	18.00"																												
	Seat Depth	20.50"																												
	Arm Height from Floor	21.00"																												
	Overall Width	28.00"																												
	Overall Depth	35.50"																												
	Reclined Depth	48.00"																												
	Reclined Depth, legrest extended	61.50"																												
	Weight	79 lbs.																												
Finish:	Type of Finish	High Solids Catalyzed Lacquer																												
	Available Colors	<table border="0"> <tr> <td>150</td> <td>Hard Rock Maple</td> <td>051</td> <td>Natural</td> </tr> <tr> <td>154</td> <td>Fine Oak</td> <td>431</td> <td>Dark Cherry</td> </tr> <tr> <td>151</td> <td>Port Maple</td> <td>143</td> <td>White Blush</td> </tr> <tr> <td>152</td> <td>Wild Cherry</td> <td>435</td> <td>Classic Cherry</td> </tr> <tr> <td>447</td> <td>Cayenne Maple</td> <td></td> <td></td> </tr> <tr> <td>448</td> <td>Honey Maple</td> <td></td> <td></td> </tr> <tr> <td>449</td> <td>Select Cherry</td> <td></td> <td></td> </tr> </table>	150	Hard Rock Maple	051	Natural	154	Fine Oak	431	Dark Cherry	151	Port Maple	143	White Blush	152	Wild Cherry	435	Classic Cherry	447	Cayenne Maple			448	Honey Maple			449	Select Cherry		
150	Hard Rock Maple	051	Natural																											
154	Fine Oak	431	Dark Cherry																											
151	Port Maple	143	White Blush																											
152	Wild Cherry	435	Classic Cherry																											
447	Cayenne Maple																													
448	Honey Maple																													
449	Select Cherry																													
Frame Construction:	Frame Material	Furniture grade plywood and hardwood																												
	Frame Construction	Double doweled and glued																												
	Arm Material	Molded Maple innerplies with Northern Red Oak face and back																												
Seat Construction:	Frame Material	Hardwood																												
	Frame Construction	Double doweled and glued																												
	Suspension	Sinuous wire springs, crossbrace wire and composition pad																												
	Seat Foam	Polyurethane foam MFG-30-24-1.80, 24 lb ILD, 1.80-1.90 density																												
Back Construction:	Frame Material	Hardwood																												
	Frame Construction	Double doweled and glued																												
	Suspension	Sinuous wire springs, crossbrace wire and composition pad																												
	Foam Type	Polyurethane foam MFG-7-20, 20 lb ILD, 1.0-1.25 density																												
Upholstery Details:	Patterns Available	Fabric, vinyl, C.O.M.																												
Test Data:	Fabric Tests	Consult specific fabric card																												
	BIFMA Tests	Meets ANSI/BIFMA X5.4 - 1990 American National Standard for Office Furnishings -Lounge Seating. Tests conducted in La-Z-Boy's accredited test facility.																												
	Flammability Tests	Meets BIFMA First Generation Voluntary Upholstered Furniture Flammability Standard for Business and Institutional Markets, F1-1978-revised 1980. California Bureau of Home Furnishings - Technical Bulletin 117. Meets Flammability Requirements of California Bureau of Home Furnishings Technical Bulletin 133 when ordered with La-Z-Boy Code Red Fabrics and Vinyl's. Consult a La-Z-Boy Customer Service Representative for further information.Upholstered Furniture Action Council Class 1.																												

Three Piece Rear Rail:

Applies to units produced after 01/2001.

Four Hex Head Screws are used to attach the Metal Rear Rail to the Rear Rail Brackets. The screws are installed in a counterclockwise direction starting with the upper slot in the left (when sitting). Do not tighten this screw completely until the other three screws are installed and fastened firmly. The upper right, lower right and lower left screws are tightened when they are installed.

Lock Down Back Service Kit

KIT70013-03/3307-001-303 includes:

<u>QTY</u>	<u>SYK PN</u>	<u>LZB PN</u>	<u>DESCRIPTION</u>
(1)	3307-707-900	92970079-00L	Back Latch Bracket Assembly
(1)	3307-907-900	92970079-00R	Back Latch Bracket Assembly
(1)	3300-048-800	62000488-00	Lock Bar
(4)	3300-001-301	96000013-01	1/4-20 x 3/4" Torx Flat Head Screws
(2)	3300-000-501	94000005-01	Black Strap
(1)	3300-061-500	63000615-01	Assembly Instructions