

stryker[®] **Medical**

LY95/96/97 335/3300-000-600 Series

Operations/Maintenance Manual

For Parts or Technical Assistance
800-327-0770

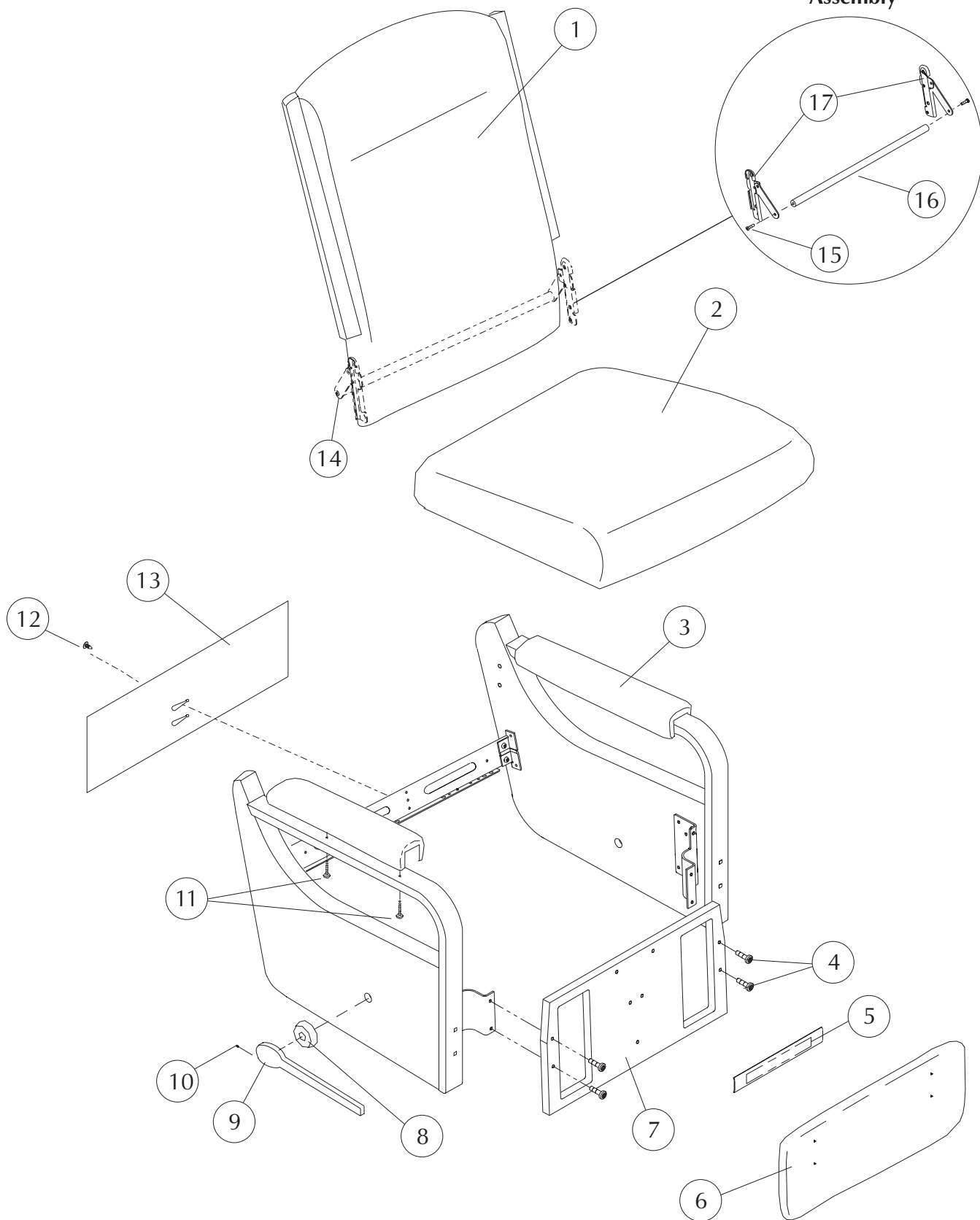
To LY95 335 Table of Contents
To LY96 335 Table of Contents
To LY97 335 Table of Contents

LY95/96/97 335/3300-000-600 Series

Table of Contents

Style LY96335/ 3300-000-602	2-3
LY96335/ 3300-000-602 Drive Rod Assembly (before 12/3/03)	4-5
LY96335/ 3300-000-602 Drive Rod Assembly (after 12/3/03)	6-7
LY96335/ 3300-000-602 Support Shaft/Drive Rod Assembly(before 12/3/03)	8-9
LY96335/ 3300-000-602 Support Shaft/Drive Rod Assembly (after 12/3/03)	10-11
LY96335/ 3300-000-602 Body Assembly	12-13
Specification LY96335/ 3300-000-602	14
General Information	15
Repair Instructions - 63000589-01	
Lock Down Back Assembly Instructions	

**Lock Down Back
Assembly**



STRYKER MEDICAL HEALTHCARE SERIES

LY96335

Note: When replacing parts, specify style and acknowledgment numbers.

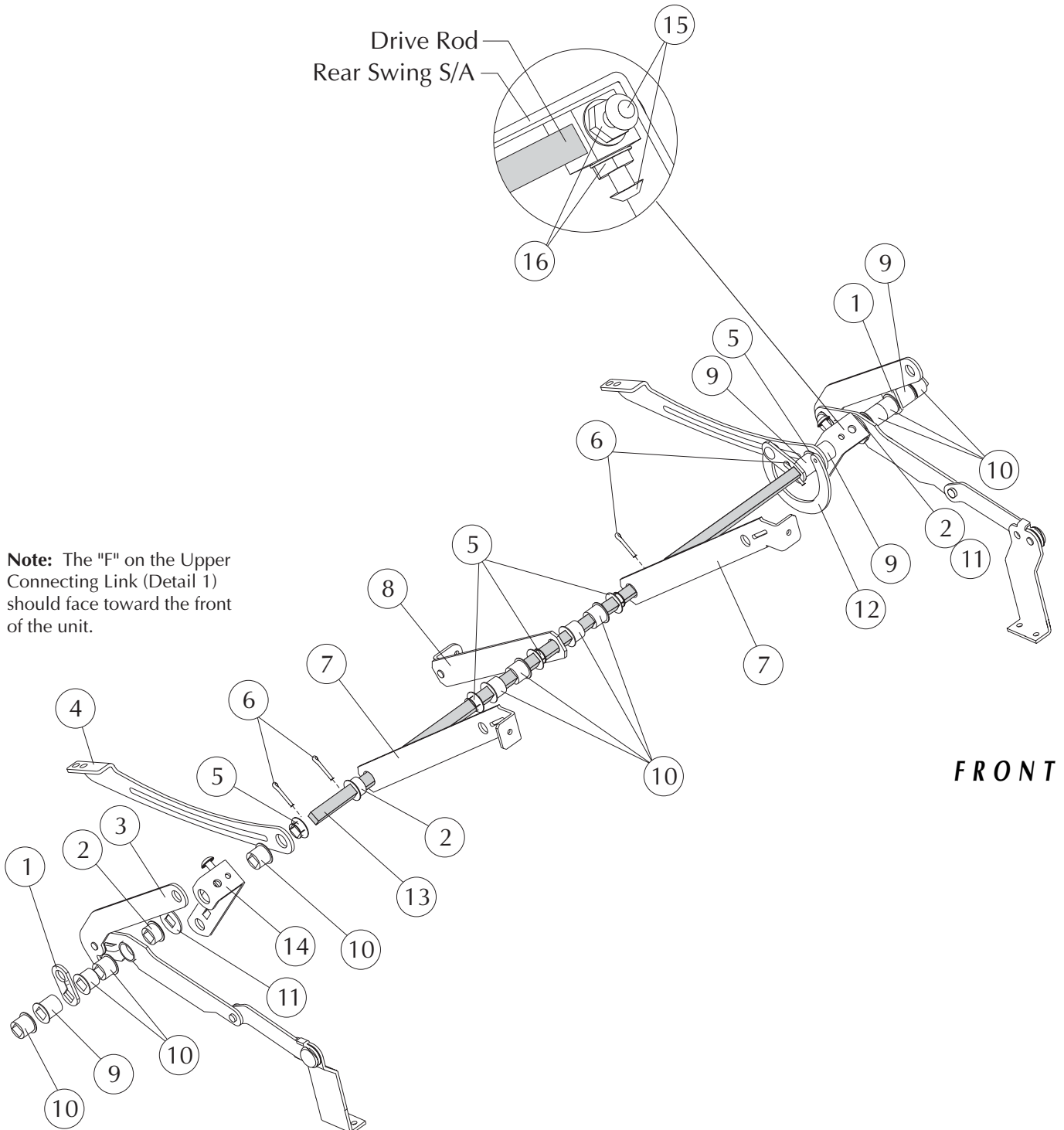
DETAIL#	SYK PN	LZB PN	DESCRIPTION	QUANTITY
1	3309-015-009	11990150-09**	Back Upholstered plus 2.5 yd cover required (LY95/96335)	1
	3309-015-010	11990150-10**	Back Upholstered plus 2.5 yd cover required (LY97335)	1
2	3309-138-917	11991389-17**	Seat Upholstered plus 1.0 yd cover required	1
3	3309-001-502	14990015-02**	Top Arm Pad upholstered plus 1.0 yd cover required	2
4	3300-035-702	96000357-02	1/4-20 x 1" Modified Flat Head Screw	4
5	3309-000-101	94990001-01**	Mid Ottoman Upholstered plus 0.5 yd cover required	1
6	3309-056-801	11990568-01**	Legrest Upholstered plus 1.0 yd cover required	1
7	3309-060-501	11990605-01**	Front rail Upholstered plus 1.0 yd cover required (LY95335)	1
	3309-056-602	11990566-02**	Front rail Upholstered plus 1.0 yd cover required (LY96335)	1
	3309-042-900	61990429-00**	Front rail Upholstered plus 1.0 yd cover required (LY97335)	1
8	3309-001-600	95990016-00*	Escutcheon Finished	1
9	3309-900-102	95990001-02R*	Long handle Finished, right (standard)	1
	3309-700-102	95990001-02L*	Long handle Finished, left (option)	1
10	3300-036-200	96000362-00	3/8-16 x 1/2" Set Screw	1
11	3300-002-502	96000025-02	1/4-20 x 1 1/4" Torx Truss Head Screw	4
12	3300-040-900	95000409-00	Christmas Tree Fastener	1
13	3308-000-328	10980003-28**	Tailgate Sewn plus 0.5 yd cover required	1
14	3307-001-303	KIT70013-03	Lock Down Back Assembly Kit, Standard	1
15	3300-001-301	96000013-01	1/4-20 x 3/4" Torx Flat head screw (pt. of det. #14)	2
16	3300-048-800	62000488-00	Lock Bar, Standard, (pt. of det. #14)	1
17	3307-907-900	92970079-00R	Back Lock Subassembly, Standard, (pt. of det. #14)	1
	3307-707-900	92970079-00L	Back Lock Subassembly, Standard, (pt. of det. #14)	1
	3303-000-501	94000005-01	Black Elastic Straps (not shown) (pt. of det. #14)	2

* Indicate finish or color when ordering
 ** Indicate fabric cover number when ordering
 *** Add charge for yardage to cost of kit - - - -

LY96335/3300-000-602

DRIVE ROD ASSEMBLY

FOR STYLES PRODUCED BEFORE 12/3/03



Note: The "F" on the Upper Connecting Link (Detail 1) should face toward the front of the unit.

LY96335

STRYKER MEDICAL HEALTHCARE SERIES

DRIVE ROD ASSEMBLY

FOR STYLES PRODUCED BEFORE 12/3/03

Note: When replacing parts, specify style and acknowledgment numbers.

DETAIL#	SYK PN	LZB PN	DESCRIPTION	QUANTITY
1	3300-005-600	42000056-00	Upper Connecting Link	2
2	3300-000-200	35000002-00	Bearing, small	3
3	3307-710-200	42970102-00L	Push Link Subassembly	1
	3307-910-200	42970102-00R	Push Link Subassembly	1
4	3300-027-800	72000278-00	Drive Shaft Support Rear	2
5	3300-105-800	15001058-00	Nylon Bearing	5
6	3300-004-102	96000041-02	Cotter Pin	4
7	3300-712-500	12000125-00L	Spacing Link	1
	3300-912-500	12000125-00R	Spacing Link	1
8	3307-031-300	62970313-00	Pull Link Subassembly	1
9	3300-012-300	95000123-00	Bearing, large	4
10	3300-012-301	95000123-01	Bearing, medium	11
11	3300-012-500	95000125-00	Washer-Drive Rod	2
12	3307-004-600	42970046-00	Toggle Subassembly	1
13	3304-016-601	12000166-01	Drive Rod	1
14	3307-012-800	42970128-00	Rear Swing Subassembly	2
15	3300-007-607	96000076-07	1/4-20 x 3/4" Serrated Truss Head Screw	4
16	3300-031-900	96000319-00	1/4-20 Flange Nut	4

LY96335

**STRYKER MEDICAL HEALTHCARE SERIES
DRIVE ROD ASSEMBLY
FOR STYLES PRODUCED AFTER 12/3/03**

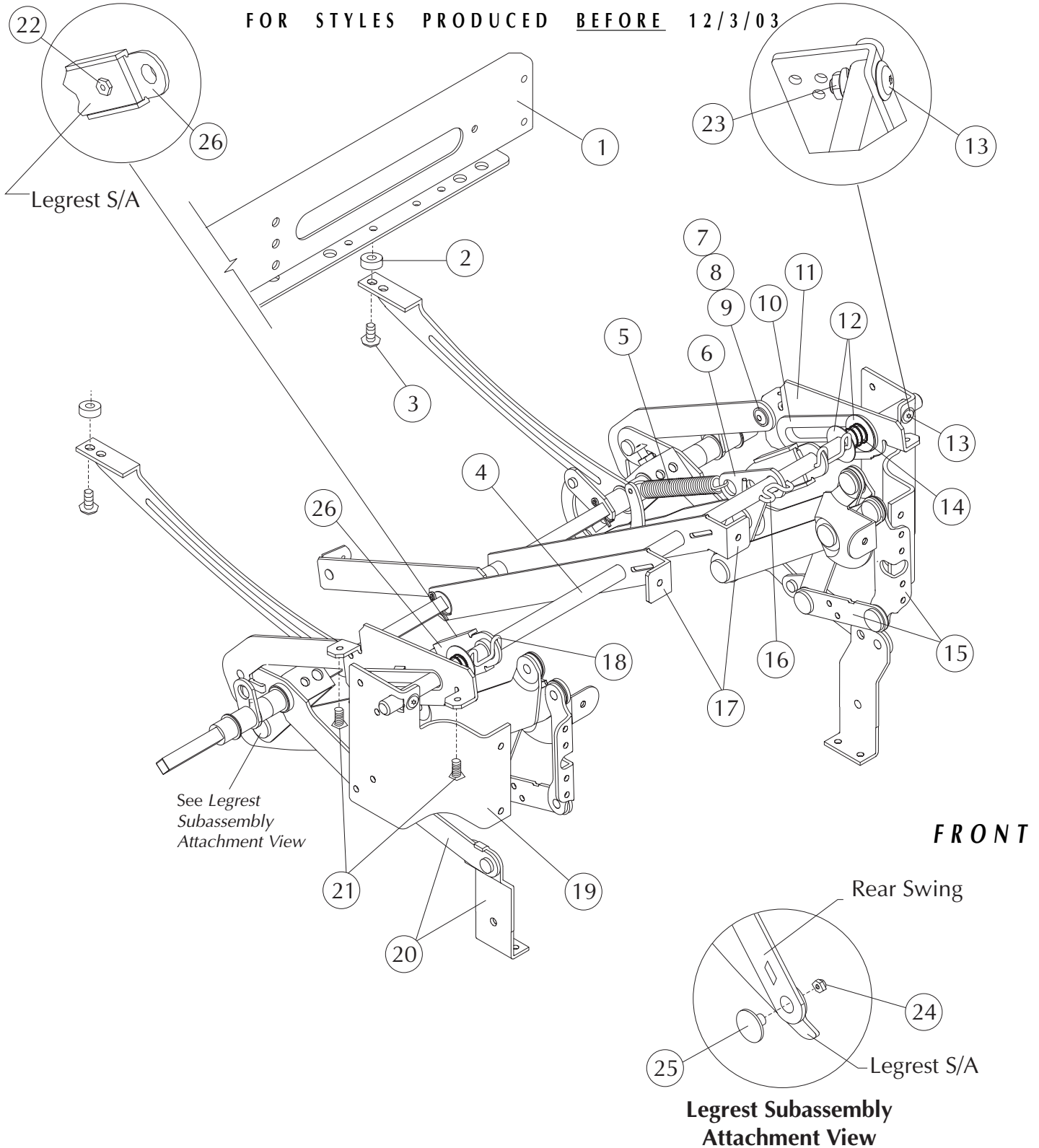
Note: When replacing parts, specify style and acknowledgment numbers.

DETAIL#	SYK PN	LZB PN	DESCRIPTION	QUANTITY
1	3300-005-600	42000056-00	Upper Connecting Link	2
2	3300-000-200	35000002-00	Bearing, small	2
3	3307-710-200	42970102-00L	Push Link Subassembly	1
	3307-910-200	42970102-00R	Push Link Subassembly	1
4	3300-027-800	72000278-00	Drive Shaft Support Rear	2
5	3300-105-800	15001058-00	Nylon Bearing	5
6	3300-004-102	96000041-02	Cotter Pin	3
7	3300-727-900	12000279-00L	Spacing Link	1
	3300-927-900	12000279-00R	Spacing Link	1
8	3307-031-300	62970313-00	Pull Link Subassembly	1
9	3300-012-300	95000123-00	Bearing, large	5
10	3300-012-301	95000123-01	Bearing, medium	11
11	3300-012-500	95000125-00	Washer-Drive Rod	2
12	3307-937-400	12970374-00R	Toggle Link Subassembly	1
13	3300-071-501	12000715-01	Drive Rod	1
14	3307-012-800	42970128-00	Rear Swing Subassembly	2
15	3300-007-607	96000076-07	1/4-20 x 3/4" Serrated Truss Head Screw	4
16	3300-031-900	96000319-00	1/4-20 Flange Nut	4
17	3300-007-606	96000076-06	1/4-20 x 1/2" Serrated Truss Head Screw	1

LY96335/3300-000-602

SUPPORT SHAFT/DRIVE ROD ASSEMBLY

FOR STYLES PRODUCED BEFORE 12/3/03



LY96335

**STRYKER MEDICAL HEALTHCARE SERIES
SUPPORT SHAFT/DRIVE ROD ASSEMBLY
FOR STYLES PRODUCED BEFORE 12/3/03**

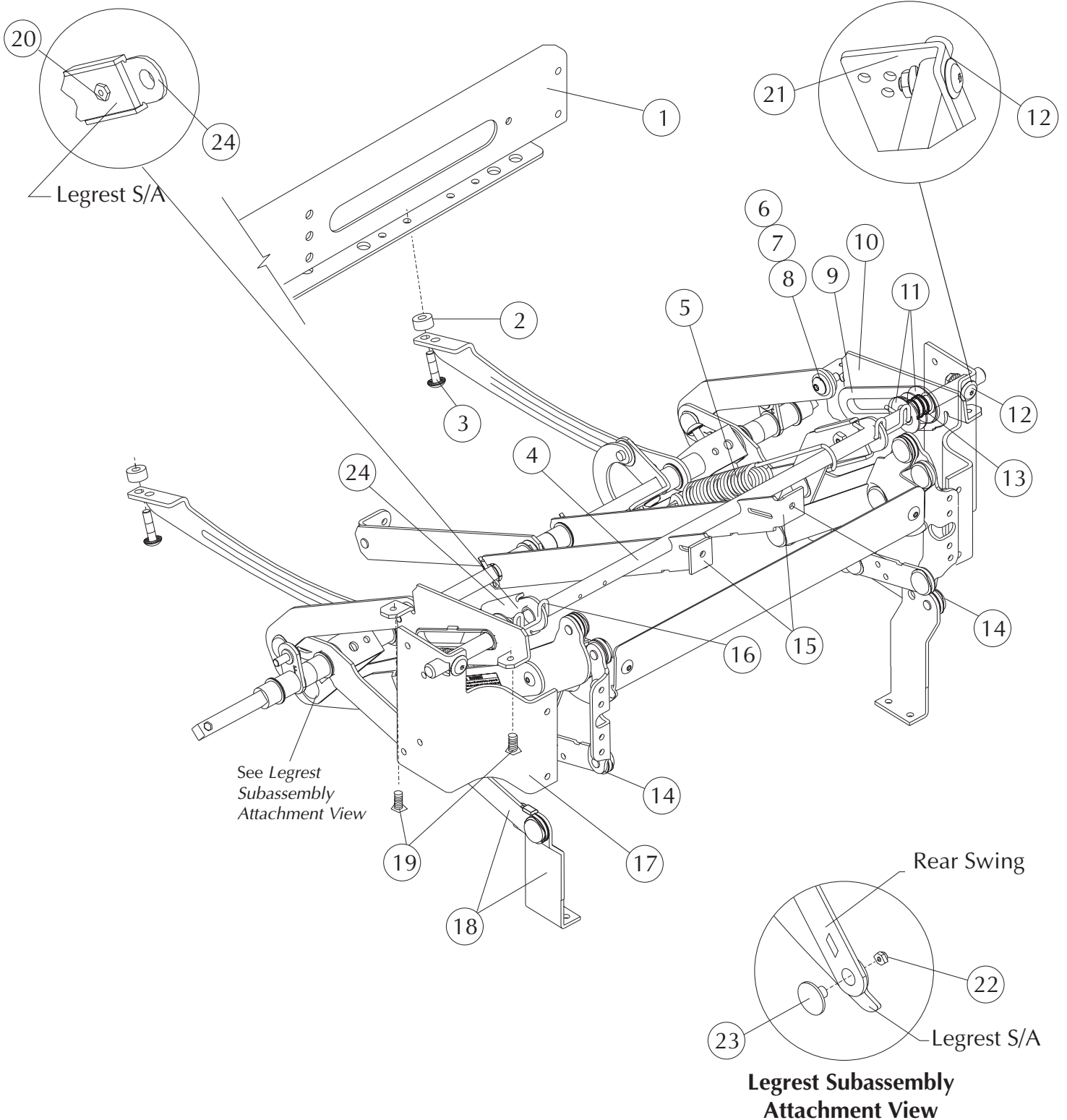
Note: When replacing parts, specify style and acknowledgment numbers.

DETAIL#	SYK PN	LZB PN	DESCRIPTION	QUANTITY
1	3307-034-401	12970344-01	Metal Rear Rail Subassembly	1
2	3300-046-803	96000468-03	Spacer (01/01-present)	2
3	3300-007-604	96000076-04	1/4-20 x 1" Serrated Truss Head Screw	2
4	3304-016-500	12000165-00	Support Shaft	1
5	3300-068-701	92000687-01	Extension Spring	1
6	3300-013-400	42000134-00	Spring Connection Link	1
7	3300-018-200	92000182-00	Shoulder Bushing	2
8	3300-002-200	96000022-00	Washer	2
9	3300-007-607	96000076-07	1/4-20 x 3/4" Serrated Truss Head Screw	2
10	3300-003-100	15000031-00	Slide Insert	2
11	3300-713-001	12000130-01L	Front Seat Slide	1
	3300-913-001	12000130-01R	Front Seat Slide	1
12	3300-035-001	96000350-01	Friction Washer	4
13	3300-039-800	96000398-00	1/4-20 x 15/16" Torx Truss Head Screw (washer head)	2
14	3300-018-600	92000186-00	Spring	2
15	3307-726-301	62970263-01L	Legrest, non-chaise	1
	3307-926-301	62970263-01R	Legrest, non-chaise	1
16	3300-004-700	42000047-00	Retaining Spacer	1
17	3300-712-500	12000125-00L	Spacing Link	1
	3300-912-500	12000125-00R	Spacing Link	1
18	3300-015-800	12000158-00	Spacing Clip	2
19	3300-723-400	12000234-00L	Offset Front Rail Mount	1
	3300-923-400	12000234-00R	Offset Front Rail Mount	1
20	3307-710-200	42970102-00L	Push Link Subassembly	1
	3307-910-200	42970102-00R	Push Link Subassembly	1
21	3300-000-803	96000008-03	#10-12 x 1 1/4" Pan Head Screw	4
22	3300-048-900	96000489-00	1/4-20 x 1/2" Serrated Hex Head Screw	2
23	3300-031-900	96000319-00	1/4-20 Flange Nut	2
24	3300-028-000	96000280-00	5/16-24 Lock Nut	2
25	3300-005-401	16000054-01	5/16-24 x 5/8" Shoulder Bolt	2
26	3300-023-001	12000230-01	Legrest Swing Bracket	2

LY96335/3300-000-602

SUPPORT SHAFT/DRIVE ROD ASSEMBLY

FOR STYLES PRODUCED AFTER 12/3/03



LY96335

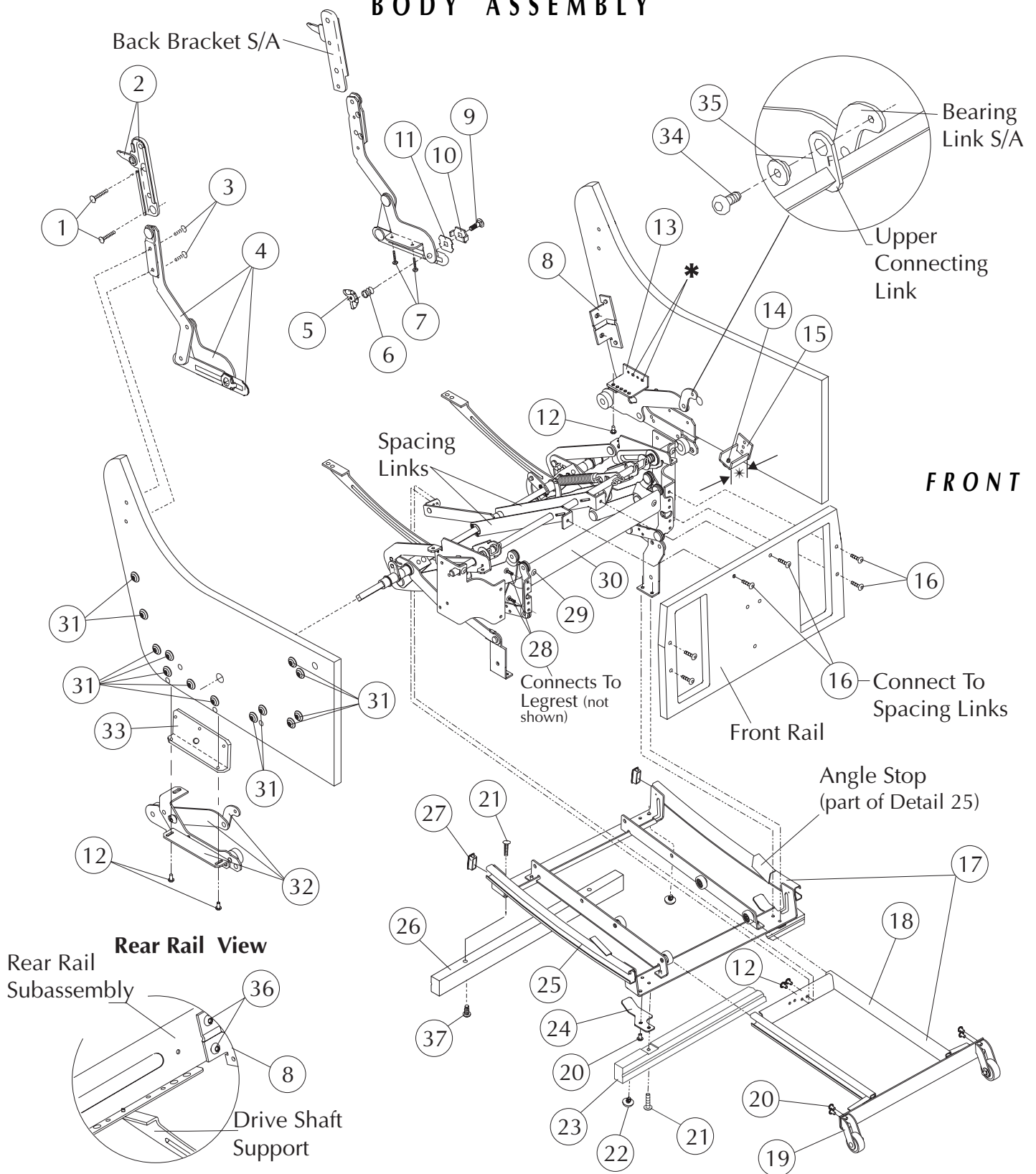
STRYKER MEDICAL HEALTHCARE SERIES
SUPPORT SHAFT/DRIVE ROD ASSEMBLY
FOR STYLES PRODUCED AFTER 12/3/03

Note: When replacing parts, specify style and acknowledgment numbers.

DETAIL#	SYK PN	LZB PN	DESCRIPTION	QUANTITY
1	3307-034-401	12970344-01	Metal Rear Rail Subassembly	1
2	3300-046-803	96000468-03	Spacer	2
3	3300-007-604	96000076-04	1/4-20 x 1" Serrated Truss Head Screw	2
4	3300-071-700	12000717-00	Support Shaft	1
5	3300-069-100	92000691-00	Extension Spring	1
6	3300-018-200	92000182-00	Shoulder Bushing	2
7	3300-002-200	96000022-00	Washer	2
8	3300-007-607	96000076-07	1/4-20 x 3/4" Serrated Truss Head Screw	2
9	3300-003-100	15000031-00	Slide Insert	2
10	3300-713-001	12000130-01L	Front Seat Slide	1
	3300-913-001	12000130-01R	Front Seat Slide	1
11	3300-035-001	96000350-01	Friction Washer	4
12	3300-039-800	96000398-00	1/4-20 x 15/16" Torx Truss Head Screw (washer head)	2
13	3300-018-600	92000186-00	Spring	2
14	3307-726-301	62970263-01L	Legrest, non-chaise	1
	3307-926-301	62970263-01R	Legrest, non-chaise	1
15	3300-727-900	12000279-00L	Spacing Link	1
	3300-927-900	12000279-00R	Spacing Link	1
16	3300-015-800	12000158-00	Spacing Clip	2
17	3300-723-400	12000234-00L	Offset Front Rail Mount	1
	3300-923-400	12000234-00R	Offset Front Rail Mount	1
18	3307-710-200	42970102-00L	Push Link Subassembly	1
	3307-910-200	42970102-00R	Push Link Subassembly	1
19	3300-000-803	96000008-03	#10-12 x 1 1/4" Pan Head Screw	4
20	3300-048-900	96000489-00	1/4-20 x 1/2" Serrated Hex Head Screw	2
21	3300-031-900	96000319-00	1/4-20 Flange Nut	2
22	3300-028-000	96000280-00	5/16-24 Lock Nut	2
23	3300-005-401	16000054-01	5/16-24 x 5/8" Shoulder Bolt	2
24	3300-023-001	12000230-01	Legrest Swing Bracket	2

LY96335/3300-000-602

BODY ASSEMBLY



LY96335

**STRYKER MEDICAL HEALTHCARE SERIES
BODY ASSEMBLY**

Note: When replacing parts, specify style and acknowledgment numbers.

DETAIL#	SYK PN	LZB PN	DESCRIPTION	QUANTITY
1	3300-001-303	96000013-03	1/4-20 x 1 1/4" Torx Flat Head Screw	4
2	3307-707-000	92970070-00L	Back Bracket Subassembly (end date 10/30/04)	1
	3307-907-000	92970070-00R	Back bracket Subassembly(end date 10/30/04)	1
3	3300-001-302	96000013-02	1/4-20 x 1" Torx Flat Head Screw	4
4	3307-709-002	12970090-02L	Seat Swing Subassembly	1
	3307-909-002	12970090-02R	Seat Swing Subassembly	1
5	3300-039-000	96000390-00	5/16 - 18 Wing Nut w/lock (part of det. #4)	2
6	3300-065-400	92000654-00	Compression Spring (part of det. #4)	2
7	3300-000-803	96000008-03	#10-12 x 1 1/4" Pan Head Screw	4
8	3300-027-301	12000273-01	Rear Rail Bracket	2
9	3300-001-400	96000014-00	Carriage Bolt (part of det. #4)	2
10	3300-009-600	12000096-00	Spur Washer (part of det. #4)	2
11	3300-003-500	16000035-00	Friction Washer (part of det. #4)	6
12	3300-007-606	96000076-06	1/4-20 x 1/2" Serrated Truss Head Screw	8
13	3300-012-800	42000128-00	Side Bracket	2
14	3300-038-902	95000389-02	Stop Pad; black (part of det. #15)	2
15	3307-015-701	42970157-01*	Stop Subassembly (measures 1 13/16")	2
16	3300-035-702	96000357-02	1/4-20 x 1" Serrated Truss Head Screw	6
17	3308-009-902	62980099-02**	Base Assembly	1
18	3307-031-100	62970311-00	Base Track Subassembly (part of det. #17)	1
19	3307-731-900	62970319-00L	Wheel Bracket Subassembly (part of det. #18)	1
	3307-931-900	62970319-00R	Wheel Bracket Subassembly (part of det. #18)	1
20	3300-007-606	96000076-06	1/4-20 x 1/2" Serrated Truss Head Screw	6
21	3300-007-608	96000076-08	1/4-20 x 1 1/2" Serrated Truss Head Screw	4
22	3300-039-400	95000394-00	X-mas Tree Glide	4
23	3309-001-901	41990019-01***	Front Base Rail, finished	1
24	3300-714-800	42000148-00L	Swing Guard	1
	3300-914-800	42000148-00R	Swing Guard	1
25	3307-031-800	62970318-00	Replacement Stabilizer Base (part of det. #17)	1
26	3309-002-001	41990020-01***	Rear Base Rail, finished	1
27	3300-001-200	45000012-00	Base Track Plug	2
28	3300-001-702	96000017-02	10-24 x 3/4" Torx Pan Head Screw	4
29	3300-026-100	96000261-00	1/4-20 x 3/8" Torx Pan Head Screw	2
30	3300-010-601	12000106-01	Center Ottoman	1
31	3300-039-801	96000398-01	1/4-20 x 11/16" Truss Head Screw (washer head)	26
	3307-706-900	42970069-00L	Bearing Link Subassembly	1
32	3307-906-900	42970069-00R	Bearing Link Subassembly	1
33	3300-109-000	12001090-00	Bearing Angle Mount Bracket	2
34	3300-007-607	96000076-07	1/4-20 x 3/4" Serrated Truss Head Screw	2
35	3300-018-200	92000182-00	Shoulder Bushing	2
36	3300-048-901	96000489-01	1/4-20 x 13/16" Serrated Hex Head Screw	4
37	3300-014-302	96000143-02	Cap Insert Nut, bronze	2

* If proper contact is not made between the *Angle Stops (part of detail #17)* and *Stop Subassemblies (detail #15)*, the chair body may drop to one side of the base or catch on the base during operation. Inspect the unit to establish if the correct *Stop Subassemblies* are installed and replace if necessary. The *Stop Subassemblies* on the Reclina-Way® Chairs should measure 1 13/16" and have a 1 stamped on the backside.

** The *Base* must be positioned so the *Stop Subassemblies (detail #15)* are aligned to both *Angle Stops* on the *Base*. Once aligned, tighten the 1/4 -20 x 1/2" *Serrated Truss Head Screws (detail #12)* on one *Bearing Link Subassembly (detail #32)*. Next, remove the side to side movement in the *Base* by sliding the other *Bearing Link Subassembly* outward. Once adjusted, tighten the screws. Check the alignment and fit. If the *Base* has excessive movement, readjust the *Base* and *Bearing Link Subassemblies*.

*** Indicate finish or color when ordering

Style LY96335/3300-000-602

Dimensions:		Back Height from Floor	41.75"
		Back Height from Seat	29.00"
		Seat Width	21.00"
		Seat Height	18.00"
		Seat Depth	20.50"
		Arm Height from Floor	21.00"
		Overall Width	28.00"
		Overall Depth	35.50"
		Reclined Depth	48.00"
		Reclined Depth, legrest extended	61.50"
		Weight	86 lbs.
Finish:		Type of Finish	High Solids Catalyzed Lacquer
		Available Colors	150 Hard Rock Maple 051 Natural
			154 Fine Oak 431 Dark Cherry
			151 Port Maple 143 White Blush
			152 Wild Cherry 435 Classic Cherry
		447 Cayenne Maple	
		448 Honey Maple	
		449 Select Cherry	
Frame Construction:		Frame Material	Furniture grade plywood and hardwood
		Frame Construction	Double doweled and glued
		Arm Material	Molded Maple innerplies with Northern Red Oak face and back
Seat Construction:		Frame Material	Hardwood
		Frame Construction	Double doweled and glued
		Suspension	Sinuuous wire springs, crossbrace wire and composition pad
		Seat Foam	Polyurethane foam MFG-30-24-1.80, 24 lb ILD, 1.80-1.90 density
Back Construction:		Frame Material	Hardwood
		Frame Construction	Double doweled and glued
		Suspension	Sinuuous wire springs, crossbrace wire and composition pad
		Foam Type	Polyurethane foam MFG-7-20, 20 lb ILD, 1.0-1.25 density
Upholstery Details:		Patterns Available	Fabric, vinyl, C.O.M.
Test Data:		Fabric Tests	Consult specific fabric card
		BIFMA Tests	Meets ANSI/BIFMA X5.4 - 1990 American National Standard for Office Furnishings -Lounge Seating. Tests conducted in La-Z-Boy's accredited test facility.
		Flammability Tests	Meets BIFMA First Generation Voluntary Upholstered Furniture Flammability Standard for Business and Institutional Markets, F1-1978-revised 1980. California Bureau of Home Furnishings - Technical Bulletin 117. Meets Flammability Requirements of California Bureau of Home Furnishings Technical Bulletin 133 when ordered with La-Z-Boy Code Red Fabrics and Vinyl's. Consult a La-Z-Boy Customer Service Representative for further information.Upholstered Furniture Action Council Class 1.

Three Piece Rear Rail:

Applies to units produced after 01/2001.

Four Hex Head Screws are used to attach the Metal Rear Rail to the Rear Rail Brackets. The screws are installed in a counterclockwise direction starting with the upper slot in the left (when sitting). Do not tighten this screw completely until the other three screws are installed and fastened firmly. The upper right, lower right and lower left screws are tightened when they are installed.

Wrong Upper Pull Link:

Applies to units produced at Leland prior to 10/01/2001.

Style LY96335, produced in Leland prior to 10/01/01, was built with the wrong upper pull link. These units could experience problems that would cause the back to lock in the down position, unable to return to an upright position.

A Service Kit has been developed to correct this, order KIT80004-02.

Lock Down Back Service Kit

KIT70013-03/3307-001-303 includes:

<u>QTY</u>	<u>SYK PN</u>	<u>LZB PN</u>	<u>DESCRIPTION</u>
(1)	3307-707-900	92970079-00L	Back Latch Bracket Assembly
(1)	3307-907-900	92970079-00R	Back Latch Bracket Assembly
(1)	3300-048-800	62000488-00	Lock Bar
(4)	3300-001-301	96000013-01	1/4-20 x 3/4" Torx Flat Head Screws
(2)	3300-000-501	94000005-01	Black Strap
(1)	3300-061-501	63000615-01	Assembly Instructions