

300 Series, Alo Rec Power Ottoman Safety Device

CUSTOMER INSTRUCTIONS

For Models:

300, 310, 31X, 61xL, 62xL, 63xL, 64xL

Applicable for Service Kits:

201855K, 201764K (QQ-00133)

PLEASE READ AND FAMILIARIZE YOURSELF WITH ALL INSTRUCTIONS BEFORE USING THIS PRODUCT. DESIGN, APPEARANCE, PARTS, AND CONSTRUCTION ARE SUBJECT TO CHANGE WITHOUT NOTICE.

If you have trouble understanding these instructions, contact Customer Service before attempting to use this product; otherwise injury may occur.



TO REDUCE THE RISK OF INJURY TO PERSONS:

1. READ AND FOLLOW ALL DIRECTIONS.
2. This kit was designed for a specific repair, retrofit, or installation based on the serial number provided. If kit is used on a different model, unexpected results may occur.
3. This chair has moving parts that may create pinch points. Work or cleaning should be performed only in the upright position with the chair latched OR in the full recline position. Keep hands clear of the mechanism, and all other pinch points, when moving the chair from one position to another.
4. Immediately remove any chair with mechanical or visible damage from service.
5. USE ONLY AUTHORIZED REPLACEMENT PARTS.

Symbols



WARNING

General Warning - If the warning is not heeded, it can cause serious injury



CAUTION

Caution - If the precaution is not taken, it may cause minor or moderate injury

IMPORTANT

Important information

IMPORTANT*Left & Right is determined as if sitting in the chair.***Parts Included**

Part Number	Description	Quantity
BL-1/4X3/4H	1/4-20X3/4 HEX CAP GR5 ZINC	4
MECH-POTTO	OTTOMAN SAFETY DEVICE (POWER CHAIR)	2

Tools Needed

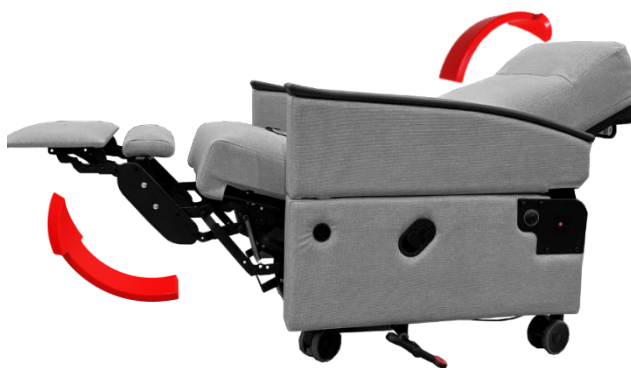
Ratchet Wrench
7/16" Socket
Rubber Mallet
Needle Nose Pliers

Procedure:

1. Lock the casters on the Recliner (Central Locking Caster model shown in images).



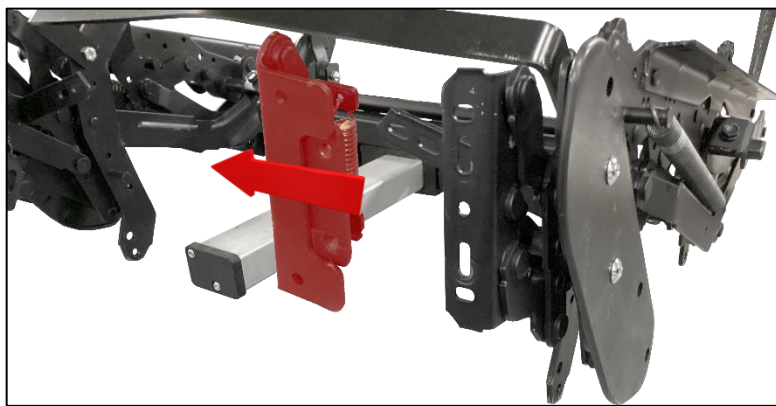
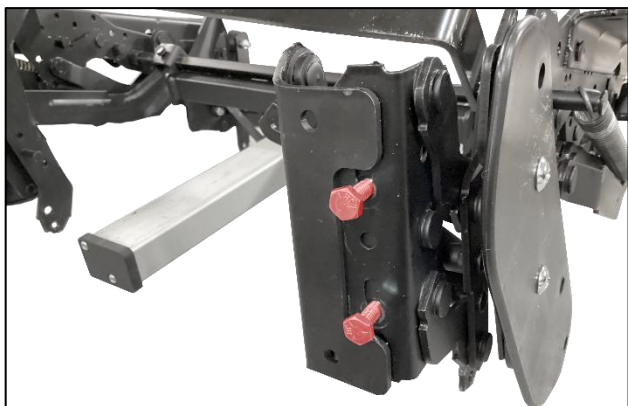
2. Open the mechanism and recline the chair completely.
Note: If the chair has the power option, use the hand pendant to recline the chair completely.



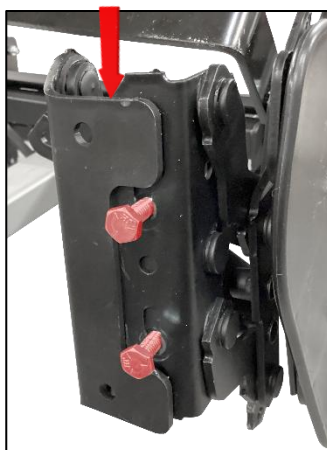
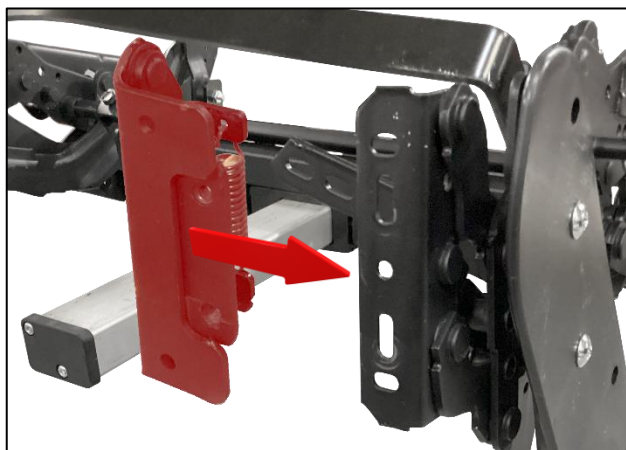
3. Using a Ratchet with 7/16" Socket, remove the four nuts and lock washers securing the footrest to the recliner mechanism. Save the nuts and lock washers.



4. Using a Ratchet with 7/16" Socket, remove the faulty footrest safety device from the recline mechanism. Discard the safety mechanism and the bolts (left side shown in images).



5. Using a Ratchet with 7/16" Socket, install the new footrest safety device onto the recline mechanism using the supplied bolts. Tap the safety device down using a Rubber Mallet before tightening completely. Repeat for opposite side.



6. Using a Ratchet with 7/16" Socket, secure the footrest to the recline mechanism, reusing the washers and nuts.

Note: Needle Nose Pliers may be used to hold the footrest bolts from pushing up into the footrest to install the washers and nuts.

