

Symmetry<sup>®</sup> PLUS  
Recliners  
Model 3500

# stryker<sup>®</sup>

## Operations/Maintenance Manual



Treatment Recliner - Narrow Width (3500-000-705)

[Mobile](#)

Treatment Recliner - Standard Width (3500-000-710)

[Mobile](#)



Wall-Saver Recliner - (3500-000-730)

[Stationary](#)

[Mobile](#)

Rocker Recliner - (3500-000-750)

[Stationary](#)

[Mobile](#)

For parts or technical  
assistance call:  
(800) 327-0770 (option 2)



# Table of Contents

---

Introduction . . . . .	5
Intended Use . . . . .	5
Specifications . . . . .	5
Warning / Caution / Note Definition. . . . .	6
Symbols. . . . .	6
Summary of Safety Precautions . . . . .	7
Operations Guide . . . . .	8
Operating the Foot Tray / Foot Rest . . . . .	8
Operating the Optional Push Handle (Mobile Recliners Only) . . . . .	8
Operating the Casters . . . . .	9
Operating the Rocker Lock-Out (Rocker Recliner 3500-000-750 Only) . . . . .	9
Cleaning. . . . .	10
Fabrics . . . . .	10
Side Tray, Foot Tray, and Polyurethane Arm Caps . . . . .	10
Wood Arm Caps. . . . .	10
Preventative Maintenance. . . . .	11
Checklist . . . . .	11
Serial Number . . . . .	11
Service Information. . . . .	12
Backrest Cushion Installation and Removal. . . . .	12
Caster Replacement . . . . .	13
Arm Cap Replacement. . . . .	13
Foot Tray Assembly Replacement. . . . .	14
Foot Tray Replacement . . . . .	14
Side Release Handle Replacement. . . . .	15
Side Tray Installation (Model 3500-000-705 and 3500-000-710 Only) . . . . .	15
Recline Mechanism Replacement (Model 3500-000-705 and 3500-000-710 Only) . . . . .	16
Recline Mechanism Replacement (Model 3500-000-730 and 3500-000-750 Only) . . . . .	17
Folding Push Bar Installation (Model 3500-000-730 and 3500-000-750 Only) . . . . .	18
Rigid Push Bar Installation (Model 3500-000-730 and 3500-000-750 Only) . . . . .	19
I.V. Pole Installation (Model 3500-000-705 And 3500-000-710 Only) . . . . .	20
Treatment Recliner - Narrow Width, Mobile . . . . .	22
Part Ordering. . . . .	24
Treatment Recliner - Standard Width, Mobile. . . . .	26
Part Ordering. . . . .	28

# Table of Contents

---


Wall-Saver Recliner, Closed Arm, Stationary . . . . .	30
Wall-Saver Recliner, Closed Arm, Stationary . . . . .	31
Part Ordering. . . . .	31
Wall-Saver Recliner, Open Arm, Mobile. . . . .	32
Part Ordering. . . . .	34
Rocker Recliner, Closed Arm, Stationary . . . . .	36
Part Ordering. . . . .	37
Rocker Recliner, Open Arm, Mobile. . . . .	38
Part Ordering. . . . .	40
Foot Tray Assembly Kit - 3500-100-108 . . . . .	41
Optional I.V. Pole - 3500-100-103 . . . . .	42
Optional Side Tray - 3500-100-105 . . . . .	43
Optional Hinged Push Bar - 3500-100-114 . . . . .	44
Warranty . . . . .	45
Limited Lifetime Warranty. . . . .	45
One Year Warranty . . . . .	45
Service Contract Coverage . . . . .	46
Service Contract Programs . . . . .	46
To Obtain Parts and Service . . . . .	47
Return Authorization. . . . .	47
Damaged Merchandise . . . . .	47
International Warranty Clause. . . . .	47

# Introduction

## INTENDED USE

This manual is designed to assist you with the operations and maintenance of Stryker Symmetry® PLUS Recliner Chairs. Carefully read this manual thoroughly before using the equipment or beginning maintenance on it. To ensure safe operation of this equipment, it is recommended that methods and procedures be established for educating and training staff on the safe operation of this product.

## SPECIFICATIONS

		<b>3500-000-730</b> Wall-Saver Recliner	<b>3500-000-750</b> Rocker Recliner	<b>3500-000-705</b> Treatment Recliner - Narrow Width	<b>3500-000-710</b> Treatment Recliner - Standard Width
	Safe Working Load	350 lbs	350 lbs	500 lbs	500 lbs
	Overall Width	30"	30"	30" (32.5" including trend pedals)	33" (35.5" including trend pedals)
	Overall Height	47.5"	45.5"	47"	47"
	Overall Depth	40.5"	41.5"	38"	38"
	Seat Width	23"	23"	23"	26"
	Seat Height from Floor	20.5"	20.5"	20.5"	20.5"
	Seat Depth	19.5"	19.5"	20.5"	20.5"
	Depth in Full Recline	70"	70"	74"	74"
	Back Height from Seat	33.5"	32.5"	31"	31"
	Arm Height from Floor	27"	27"	28.25"	28.25"
	Weight of Unit	131 lbs	139 lbs	170 lbs	165 lbs

***Stryker reserves the right to change specifications without notice.***

# Introduction

---

## **WARNING / CAUTION / NOTE DEFINITION**

The words WARNING, CAUTION, and NOTE carry special meanings and should be carefully reviewed.

---

### **WARNING**

Alerts the reader about a situation, which if not avoided, could result in death or serious injury. It may also describe potential serious adverse reactions and safety hazards.

---

### **CAUTION**

Alerts the reader of a potentially hazardous situation, which if not avoided, may result in minor or moderate injury to the user or patient or damage to the equipment or other property. This includes special care necessary for the safe and effective use of the device and the care necessary to avoid damage to a device that may occur as a result of use or misuse.

---

### **Note**

This provides special information to make maintenance easier or important instructions clearer.

# Symbols

---



Warning, consult accompanying documentation



Safe Working Load Symbol

# Summary of Safety Precautions

---

## WARNINGS

---

- Do not hang anything from the release handles on the chair.
- Failure to follow instructions for proper assembly could result in potential injury or product failure.
- Do not sit on the extended foot rest. It is non-locking and will collapse when full body weight is applied.

## CAUTIONS

---

- The reclining mechanism does not require lubricant. If binding occurs, contact your local Stryker Technical Support representative.

## Note

- Components are intended to be removable for service and are not permanently affixed.

# Operations Guide

## OPERATING THE FOOT TRAY / FOOT REST

**To use foot tray:**  
Pull out foot tray from under the recliner.



**To raise foot rest:**  
Locate handle on side of chair and pull back.



## OPERATING THE OPTIONAL PUSH HANDLE (MOBILE RECLINERS ONLY)

**To move, push, and pull recliner:**  
Use the gray handle bar located on back of recliner



**STANDARD**  
(Rigid)







**OPTIONAL**  
(Hinged)







# Operations Guide

## OPERATING THE CASTERS

<p><b>To lock the caster:</b> Using your foot, push down on caster lock.</p>	<p><b>To unlock caster:</b> Using your foot, flip caster lock up.</p>
	<p><b>WALL SAVER (3500-000-730) AND ROCKER (3500-000-750)</b></p> 
	<p><b>TREATMENT (3500-000-705 &amp; 3500-000-710)</b></p> 

## OPERATING THE ROCKER LOCK-OUT (ROCKER RECLINER 3500-000-750 ONLY)

<p><b>To lock the rocker in place:</b> Lift lever on rear of recliner.</p>	<p><b>To unlock the rocker:</b> Depress lever gently toward the floor.</p>
	

# Cleaning

---

## FABRICS

**Vinyl:** Promptly wash with a mild soap solution. For a previously soiled area that has not yet penetrated the vinyl surface, wash and scrub with a sponge or soft brush using a mild, non-abrasive cleaner. Use Method 1 in the cleaning procedures below for normal spills. Apply Methods 2 and 3 as needed for more intensive cleaning needs.

- **Method 1:** Remove excess spill with damp cloth. Clean with a 1:1 mixture of Ivory® or similar liquid soap and water. Rinse with clear water and dry.
- **Method 2:** Use a straight application of concentrated cleaners such as Formula 409® or fantastik®. Wipe with a clean cloth.
- **Method 3:** Use a 1:1 mixture of ammonia and water or a mixture of 6% bleach with water. Rinse with clear water and dry. Never use bleach in full strength to clean vinyl.

**Note:** For special cleaning problems, use a soft cotton cloth saturated with the cleaning material, and rub in circles six times. If stain persists, stain has probably set\*, and may be permanent.

\* Although these vinyls are resistant to most common stains, some fabric dyes and ballpoint inks can create a permanent stain. As soon as these stains are noticed, clean using the recommended methods in order.

**Crypton®:** For everyday spills, wipe up quickly. Sponge area using clear water. If stain persists, use a powdered enzyme detergent diluted with water. Rinse any residue with clear water. Do not use solvent-based cleaners as some may harm fabric. Bleach is not recommended as it may cause fading. Always test any cleaning agents on a hidden area of the furniture. Please follow instructions from the cleaning solution's manufacturer.

## SIDE TRAY, FOOT TRAY, AND POLYURETHANE ARM CAPS

The Center for Disease Control recommends a 1:4 mixture of bleach and water for disinfection. Thoroughly rinse the solution from the product surface. If other hospital-grade cleaning agents are used, follow the instructions provided by the cleaning solution's manufacturer. Wipe the surface with a soft, dry cloth to remove any moisture.

## WOOD ARM CAPS

Hospital-grade cleaning agents may be used on Stryker Medical wood products as long as the liquid is not left sitting on the surface for an extended period of time. Failure to wipe up liquids or cleaners immediately from the wood surface with a soft, dry cloth may reduce the performance of the Valspar® finish and result in damage to the wood surface. Be sure to follow the instructions provided by the cleaning solution's manufacturer, and always test any cleaning agents on a hidden area of the wood first before proceeding with entire product.

# Preventative Maintenance

---

## CHECKLIST

- \_\_\_\_\_ All fasteners secure.
- \_\_\_\_\_ Side tray laminate intact – not damaged (optional on Treatment recliner only).
- \_\_\_\_\_ Foot tray laminate and edge mold intact – not damaged (Mobile option only).
- \_\_\_\_\_ Release handle locking and releasing properly.
- \_\_\_\_\_ All casters secure and rolling properly.
- \_\_\_\_\_ All casters locking.
- \_\_\_\_\_ Casters swiveling properly (front optional).
- \_\_\_\_\_ No debris in casters.
- \_\_\_\_\_ Verify backrest cushion screw knobs are tight.

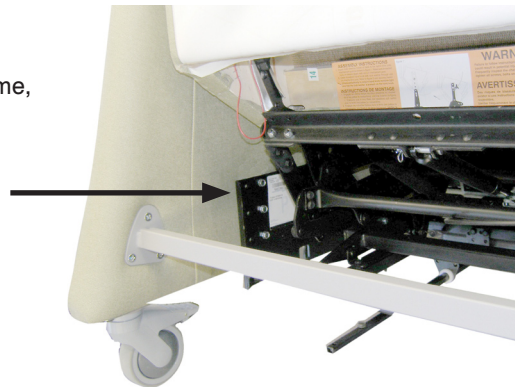
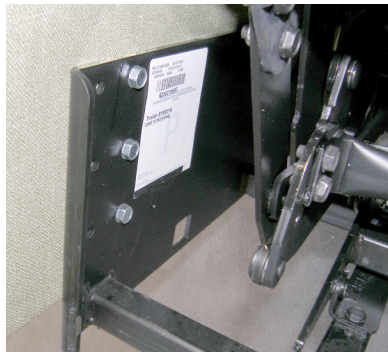
---

## CAUTION

The reclining mechanism does not require lubricant. If binding occurs, contact your local Stryker Technical Support representative.

## SERIAL NUMBER

- The recliner serial number is located on the inside of the main frame, patient left side, as shown in the figure to the right.



Recliner Serial Number:		

Completed by: \_\_\_\_\_ Date: \_\_\_\_\_

[Return To Table of Contents](#)

# Service Information

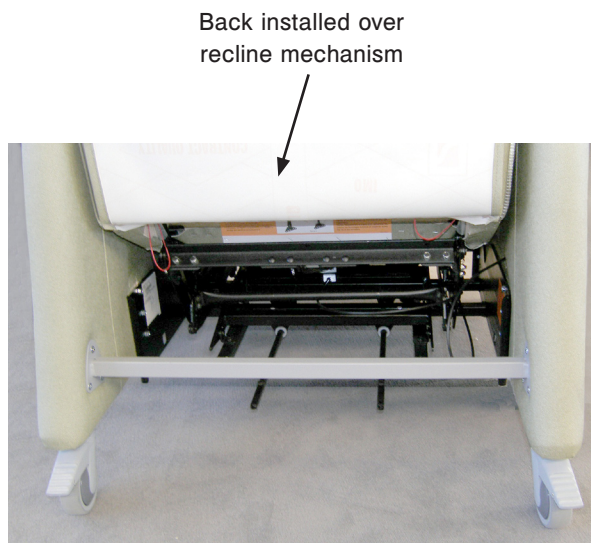
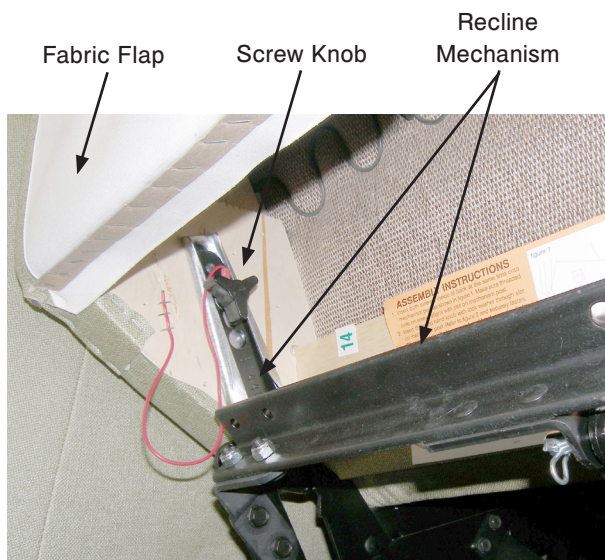
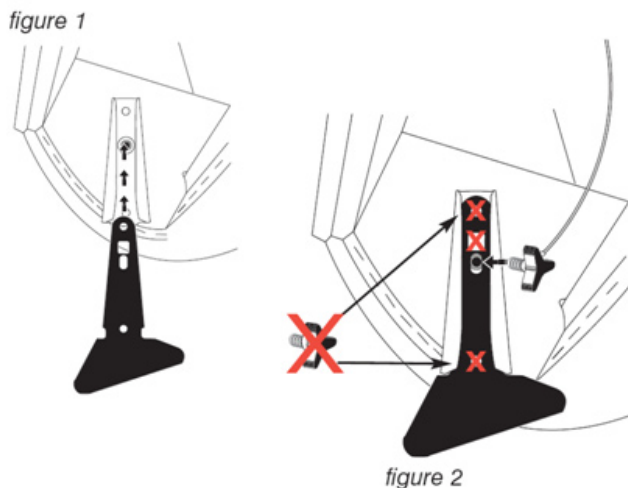
## BACKREST CUSHION INSTALLATION AND REMOVAL

### To install the backrest cushion:

1. Slide the backrest cushion over the recline mechanism, which is located on the left and right side of the recliner.
2. Insert the sleeves on the backrest onto the posts *figure 1*  
(see Figure 1).
3. Align the threaded hole on the sleeve with the elongated hole on the post.
4. Insert the threaded screw knob into the elongated hole.

**Note:** Do not insert the screw knob into any hole marked with an X, as shown in Figure 2.

5. Tighten the screw knob on both sides of the backrest to secure the backrest cushion into place.
6. Check proper functionality of the recliner prior to returning the recliner to service.



### WARNING

Failure to follow instructions for proper assembly could result in potential injury or product failure.

### To remove the backrest cushion:

1. At the rear of the chair, lift the fabric flap and locate the screw knob on the left and right side of the recliner.
2. Loosen the screw knobs to release the back.
3. Lift the backrest cushion from the chair.

# Service Information

---

## CASTER REPLACEMENT

### Tools Required:

- #3 Phillips Screwdriver

### Procedure:

1. Apply the brake on the recliner casters located opposite the side you need to replace.
2. Carefully tip the recliner while pivoting on the locked casters and lay on its side.
3. Using a #3 Phillips screwdriver, remove the four screws that secure the caster to the chair frame.  
**Note: If the caster brake is applied, release it so you can swivel the caster to remove the screws.**
4. Remove caster and discard.
5. Using a #3 Phillips screwdriver, secure the new caster to the chair frame with the four screws removed in step 3.  
**Note: Apply the brake on the new caster.**
6. Flip chair upright using caution not to drop chair.
7. Release the brake on all casters.
8. Check proper functionality of the caster prior to returning the recliner to service.

## ARM CAP REPLACEMENT

### Tools Required:

- Large Regular Screwdriver
- Rubber Mallet

### Procedure:

1. Apply the brake on the recliner casters located opposite the side you need to replace.
2. Using a rubber mallet, tap the back of the arm cap to move it forward until it becomes loose.
3. Remove arm cap and set aside.

---

 **CAUTION**

Fasteners on the arm cap have sharp points which could cause injury.

4. Align new arm cap fasteners over slot.
5. Using a rubber mallet, tap the arm cap from the front until flush.
6. Using a rubber mallet, tap the top of the arm in a downward motion to secure it to the arm frame.

**Note: Ensure the arm cap is flush to the arm frame.**

7. Check proper functionality of the arm cap prior to returning the recliner to service.

# Service Information

---

## FOOT TRAY ASSEMBLY REPLACEMENT

### Tools Required:

- 7/16" Socket

### Procedure:

1. Apply the brake on the recliner casters.
2. Carefully lay the chair on its side.
3. Using a 7/16" socket, remove the two 7/16" bolts located on the foot tray slide tubes.
4. Remove foot tray assembly by pulling out towards the front of the chair.
5. Reverse steps above to reinstall the new foot tray.
6. Check proper functionality of the new foot tray assembly prior to returning the recliner to service.

## FOOT TRAY REPLACEMENT

### Tools Required:

- Phillips Screwdriver

### Procedure:

1. Apply the brakes on the recliner casters.
2. Using a screwdriver, remove the four screws that attach the foot tray to the slide tubes.
3. Using a Phillips screwdriver, remove the eight screws that secure the foot tray casters to the foot tray.
4. Discard the foot tray.
5. Install the casters on the new foot tray and secure with the eight screws removed in step 3.
6. Align the new foot tray mounting holes to the holes on the slide tubes.
7. Attach the screws removed in step 2 and hand tighten.
8. Push the foot tray in all the way.
9. Using a Phillips screwdriver, tighten the four screws that hold the tray to the slide tubes.
10. Check proper functionality of new foot tray prior to returning the recliner to service.

# Service Information

---

## SIDE RELEASE HANDLE REPLACEMENT

### Tools Required:

- Phillips Screwdriver

### Procedure:

1. Using a Phillips screwdriver, remove the two screws from the inside of the release handle housing.
2. Pull housing out.
3. Detach cable from housing and remove housing.
4. Reverse steps above to reattach new side release handle.
5. Check proper functionality of the new side release handle prior to returning the recliner to service.

## SIDE TRAY INSTALLATION (MODEL 3500-000-705 AND 3500-000-710 ONLY)

### Tools Required:

- #2 Phillips Screwdriver
- Scribe (Pointed Device)
- Tape Measure
- Pen

### Procedure:

1. Apply the brake on the casters.
2. Using a tape measure and a pen, measure 3/4" from the front seam of the arm and 2-1/4" from the top of the arm just below the wood using a pen mark this location.  
**Note: This is the location of the top front hole of the side tray mounting bracket.**
3. Using a scribe, carefully prick the fabric to find the hole for the screw. Once the hole is found, push the scribe through the fabric to pilot the hole for the screw.
4. Locate the side tray onto the arm. Using a Phillips screwdriver, install the top front screw without fully tightening so that the bracket is loose.
5. Making sure that the bracket is square with the chair, use a scribe to pilot the other three holes.
6. Using a Phillips screwdriver, install the three screws into the other holes and tighten. Also tighten the top front screw.
7. Check proper functionality of the side tray prior to returning the recliner to service.



# Service Information

---

## RECLINE MECHANISM REPLACEMENT (MODEL 3500-000-705 AND 3500-000-710 ONLY)

### Tools Required:

- 7/16" Speed Wrench
- Needle Nose Pliers
- #2 Phillips Screwdriver
- 3/8" Drive Ratchet
- 7/16" Socket
- 1/2" Wrench
- 7/16" Deep Socket

### Procedure:

1. Remove the backrest cushion ([see page 12](#)).
2. Apply the brake on the casters.
3. Carefully lay the chair on its side.

**Note: Put something on the floor to protect the chair from damage.**

4. Using a pair of needle nose pliers, on the patient right side detach the release cable from the recline mechanism.
5. Using a 7/16" speed wrench and a 1/2" wrench, remove the two screws that attach the trend lever brackets to the recline mechanism.

**Note: Set screws aside for later installation.**

6. Using a 7/16" speed wrench and a 7/16" deep socket, remove the four screws that secure the recline mechanism to the base weldment.
7. Using a 7/16" speed wrench, remove the four bolts securing the seat cushion to the recline mechanism.

---

### CAUTION

---

The seat mechanism may extend during service. Take precautions to ensure that fingers do not get pinched.

8. Remove the lift mechanism with the seat cushion from the base weldment.
9. Using a Phillips screwdriver, remove the four screws that secure the calf rest cushion to the recline mechanism.
10. Using a Phillips screwdriver, remove the four screws that secure that foot rest cushion to the recline mechanism.
11. Discard the old recline mechanism.
12. Reverse steps 4 – 9 to install the new recline mechanism.
13. Check proper functionality of the recliner prior to returning the recliner to service.



# Service Information

---

## RECLINE MECHANISM REPLACEMENT (MODEL 3500-000-730 AND 3500-000-750 ONLY)

### Tools Required:

- 7/16" Speed Wrench
- Needle Nose Pliers
- #2 Phillips Screwdriver
- 3/8" Drive Ratchet
- 7/16" Socket

### Procedure:

1. Remove the backrest cushion ([see page 12](#)).
1. Apply the brake on the casters.
2. Carefully lay the chair on its side.

**Note: Put something on the floor to protect the chair from damage.**

3. Using a pair of needle nose pliers, on the patient right side detach the release cable from the recline mechanism.
4. Using a 3/8" drive ratchet and a 7/16" socket, remove the four bolts that secure the recline mechanism to the base weldment.
5. Using a 7/16" speed wrench, remove the four bolts securing the seat cushion to the recline mechanism.
6. Using a Phillips screwdriver, remove the four screws that secure the calf rest cushion to the recline mechanism.
7. Using a Phillips screwdriver, remove the four screws that secure that foot rest cushion to the recline mechanism.
8. Discard the old recline mechanism.
9. Reverse steps 4 – 8 to install the new recline mechanism.
10. Check proper functionality of the recliner prior to returning the recliner to service.

# Service Information

---

## FOLDING PUSH BAR INSTALLATION (MODEL 3500-000-730 AND 3500-000-750 ONLY)

### Tools Required:

- #2 Phillips Screwdriver
- Scribe (Pointed Device)
- Tape Measure
- Pen

### Procedure:

1. Apply the brake on the casters.
2. Using a tape measure and a pen, measure 4-3/8" from the top seam and 2-7/8" from the side seam of the backrest then mark this location on each side of the backrest.

**Note: This is the location of the top hole of the push bar mounting bracket for each side.**

3. Using a scribe, carefully prick the fabric to find the hole for the screw. Once the hole is found, push the scribe through the fabric to pilot the hole for the screw. Repeat on the other side.
4. Locate the push bar onto the backrest with the bumpers oriented upwards. Using a Phillips screwdriver, install the top two screws without fully tightening so that the bracket is loose on both sides.
5. Making sure that the bracket are square with the chair, use a scribe to pilot the bottom two holes.
6. Using a Phillips screwdriver, install the two screws into the bottom holes and tighten. Also tighten the top two screws.
7. Check proper functionality of the recliner prior to returning the recliner to service.

# Service Information

---

## RIGID PUSH BAR INSTALLATION (MODEL 3500-000-730 AND 3500-000-750 ONLY)

### Tools Required:

- #2 Phillips Screwdriver
- Scribe (Pointed Device)
- Tape Measure
- Pen

### Procedure:

1. Apply the brake on the casters.
2. Using a tape measure and a pen, measure 4-3/8" from the top seam and 2-7/8" from the side seam of the backrest then mark this location on each side of the backrest.

**Note: This is the location of the top hole of the push bar mounting bracket for each side.**

3. Using a scribe, carefully prick the fabric to find the hole for the screw. Once the hole is found, push the scribe through the fabric to pilot the hole for the screw. Repeat on the other side.
4. Locate the push bar onto the backrest. Using a Phillips screwdriver, install the top two screws without fully tightening so that the bracket is loose on both sides.
5. Using a scribe, pilot the bottom two holes.
6. Using a Phillips screwdriver, install the two screws into the bottom holes and tighten. Also tighten the top two screws.
7. Check proper functionality of the recliner prior to returning the recliner to service.

# Service Information

---

## I.V. POLE INSTALLATION (MODEL 3500-000-705 AND 3500-000-710 ONLY)

### Tools Required:

- #2 Phillips Screwdriver
- Scribe (Pointed Device)
- Tape Measure
- Pen

### Procedure:

1. Apply the brake on the casters.
2. Using a tape measure and a pen, measure 15-1/4" from the bottom of the arm and 23-1/2" from the front seam then mark this location.

**Note: This is the location of the bottom hole of the I.V. pole mounting bracket.**

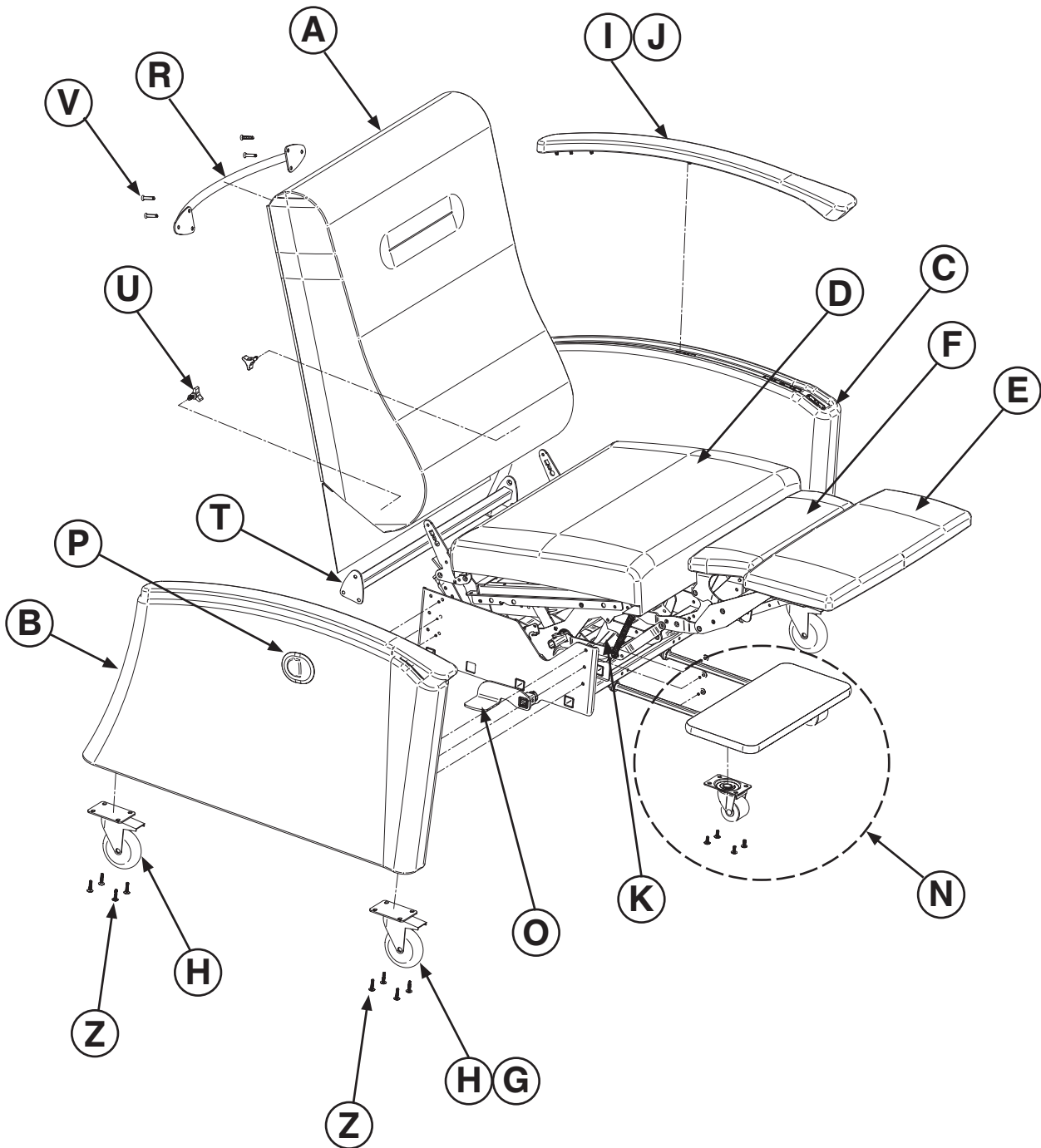
3. Using a scribe, carefully prick the fabric to find the hole for the screw. Once the hole is found, push the scribe through the fabric to pilot the hole for the screw.
4. Locate the I.V. pole onto the arm. Using a Phillips screwdriver, install the bottom screw without fully tightening so that the bracket is loose.
5. Making sure that the bracket is square with the chair, use a scribe to pilot the other two holes.
6. Using a Phillips screwdriver, install the two screws into the other holes and tighten. Also tighten the bottom screw.
7. Check proper functionality of the I.V. pole prior to returning the recliner to service.

# Notes

---

# Treatment Recliner - Narrow Width, Mobile

For Reference Only: 3500-000-705



# Treatment Recliner - Narrow Width, Mobile

Standard Components include Foot Tray, Casters, and Push Bar - 3500-000-705 (Reference Only)

Item	Stryker P/N	Part Description	Qty.
A	3500-100-160	Back upholstered - Narrow TR	1
B	* 3500-100-091	Arm upholstered, patient right - TR	1
C	* 3500-100-092	Arm upholstered, patient left - TR	1
D	* 3500-100-161	Seat upholstered - Narrow TR	1
E	* 3500-100-162	Ottoman upholstered - Narrow TR	1
F	* 3500-100-166	Mid-Ottoman upholstered - Narrow TR	1
G	* 3500-100-096	4" Rigid Locking Caster (Standard Front)	1
		4" Rigid Locking Caster (Optional Front)	0
H	* 3500-100-097	4" Swivel Locking Caster (Standard Rear)	1
		4" Swivel Locking Caster (Standard Rear, Optional Front)	0
I	3500-100-098	Arm cap set - wood finished with fasteners (Optional)	1
J	3500-100-099	Arm cap set - polyurethane with fasteners (Standard)	1
K	3500-100-163	Narrow treatment recliner mechanism	1
N	3500-100-108	Foot tray assembly ( <a href="#">see page 41</a> )	1
O	3500-100-110	Trendelenburg lever set	1
P	3500-100-111	Recline release handle and cables	1
Q	3500-100-112	Gas cylinder (not shown in drawing)	1
R	3500-100-113	Push bar rigid (Standard)	1
S	3500-100-114	Push bar hinged (Optional) ( <a href="#">see page 44</a> )	1
T	3500-100-165	Back support bar - Narrow TR	1
U	3500-100-131	Back attachment knob	2
V	3500-100-151	1/4-20 x 1-1/4" Flat QUAD MS ZC	1
W	3500-100-133	1/2" Tapping Screw (not shown in drawing)	4
X	3500-100-134	1/4-20 x 3/4" TRS QD SR MS B (not shown in drawing)	8
Y	3500-100-135	1 1/2" Self Tapping Screw (not shown in drawing)	4
Z	3500-100-136	1/4-20 x 1" TRS QD MS SR BLK HP	1
BB	3500-100-149	1/4-20 x 1" Hex Head Screw (not shown in drawing)	1
CC	3500-100-150	1/4-20 x 1" FLAT QUAD MS BLACK (not shown in drawing)	1
DD	3500-100-152	#8 x 1" Pan QD TS BLK NC (not shown in drawing)	2
EE	3500-100-153	1/4-20 x 2 3/4" Pan Head QD SR ZC (not shown in drawing)	1

# Treatment Recliner - Narrow Width, Mobile

---

For Reference Only: 3500-000-705

## PART ORDERING

When ordering the selected items from the part list above, order the hardware as referenced below.	
*	For item B (3500-100-091): order quantity 6 of item BB (3500-100-149) for attachment.
*	For item C (3500-100-092): order quantity 6 of item BB (3500-100-149) for attachment.
*	For item D (3500-100-161): order quantity 4 of item W (3500-100-133) for attachment.
*	For item E (3500-100-162): order quantity 4 of item X (3500-100-134) for attachment.
*	For item F (3500-100-166): order quantity 4 of item X (3500-100-134) for attachment.
*	For item G (3500-100-096): order quantity 4 of item Z (3500-100-136) for attachment.
*	For item H (3500-100-097): order quantity 4 of item Z (3500-100-136) for attachment.
*	For item K (3500-100-163): order quantity 4 of item Y (3500-100-135) for attachment.
*	For item O (3500-100-110): order quantity 2 of item Y (3500-100-135) for attachment.
*	For item P (3500-100-111): order quantity 2 of item DD (3500-100-152) for attachment.
*	For item R (3500-100-113): order quantity 4 of item V (3500-100-151) for attachment.
*	For item T (3500-100-165): order quantity 6 of item CC (3500-100-150) for attachment.

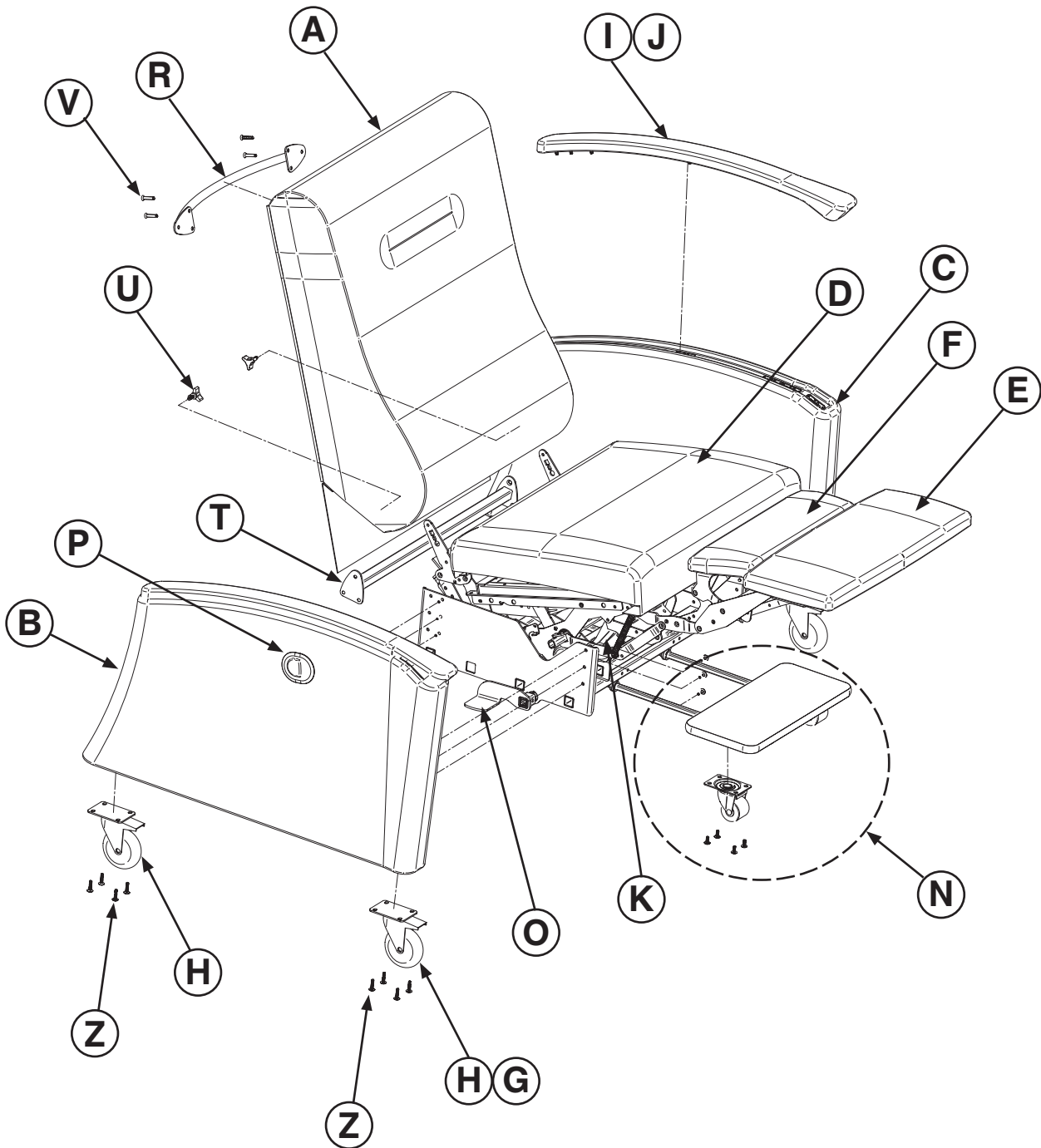


# Notes

---

# Treatment Recliner - Standard Width, Mobile

For Reference Only: 3500-000-710



# Treatment Recliner - Standard Width, Mobile

Standard Components include Foot Tray, Casters, and Push Bar - 3500-000-710 (Reference Only)

Item	Stryker P/N	Part Description	Qty.
A	3500-100-090	Back Upholstered - TR	1
B	* 3500-100-091	Arm upholstered, patient right - TR	1
C	* 3500-100-092	Arm upholstered, patient left - TR	1
D	* 3500-100-093	Seat upholstered - TR	1
E	* 3500-100-094	Ottoman Upholstered - TR	1
F	* 3500-100-095	Mid-Ottoman Upholstered - TR	1
G	* 3500-100-096	4" Rigid Locking Caster (Standard Front)	2
		4" Rigid Locking Caster (Optional Front)	0
H	* 3500-100-097	4" Swivel Locking Caster (Standard Rear)	2
		4" Swivel Locking Caster (Standard Rear, Optional Front)	4
I	3500-100-098	Arm cap set - wood finished with fasteners (Optional)	1
J	3500-100-099	Arm cap set - polyurethane with fasteners (Standard)	1
K	3500-100-100	Treatment recliner mechanism	1
N	3500-100-108	Foot tray assembly ( <a href="#">see page 41</a> )	1
O	3500-100-110	Trendelenburg lever set	1
P	3500-100-111	Recline release handle and cables	1
Q	3500-100-112	Gas cylinder (not shown in drawing)	1
R	3500-100-113	Push bar rigid (Standard)	1
S	3500-100-114	Push bar hinged (Optional) ( <a href="#">see page 44</a> )	1
T	3500-100-140	Back support bar	1
U	3500-100-131	Back attachment knob	2
V	3500-100-151	1/4-20 X 1-1/4" Flat QUAD MS ZC	7
W	3500-100-133	1/2" Tapping Screw (not shown in drawing)	4
X	3500-100-134	1/4-20 x 3/4" TRS QD SR MS B (not shown in drawing)	8
Y	3500-100-135	1 1/2" Self Tapping Screw (not shown in drawing)	6
Z	3500-100-136	1/4-20 x 1" TRS QD MS SR BLK HP	16
BB	3500-100-149	1/4-20 x 1" Hex Head Screw (not shown in drawing)	12
CC	3500-100-150	1/4-20X1" FLAT QUAD MS BLACK (not shown in drawing)	6
DD	3500-100-152	#8 x 1" Pan QD TS BLK NC (not shown in drawing)	2
EE	3500-100-153	1/4-20X2 3/4" Han Head QD SR ZC (not shown in drawing)	4

[Return To Table of Contents](#)

# Treatment Recliner - Standard Width, Mobile

---

For Reference Only: 3500-000-710

## PART ORDERING

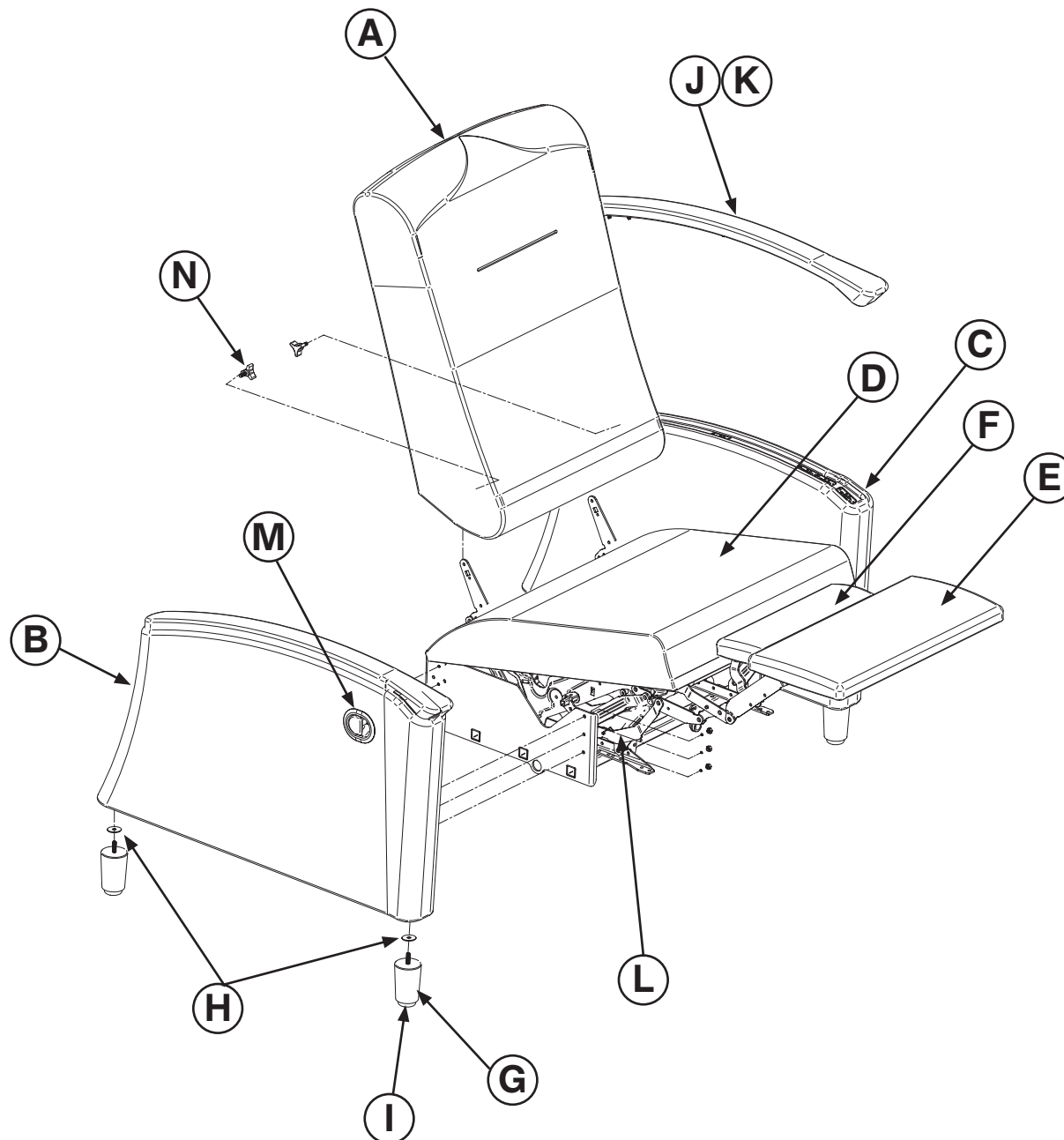
When ordering the selected items from the part list above, order the hardware as referenced below.	
*	For item B (3500-100-091): order quantity 6 of item BB (3500-100-149) for attachment.
*	For item C (3500-100-092): order quantity 6 of item BB (3500-100-149) for attachment.
*	For item D (3500-100-093): order quantity 4 of item W (3500-100-133) for attachment.
*	For item E (3500-100-094): order quantity 4 of item X (3500-100-134) for attachment.
*	For item F (3500-100-095): order quantity 4 of item X (3500-100-134) for attachment.
*	For item G (3500-100-096): order quantity 4 of item Z (3500-100-136) for attachment.
*	For item H (3500-100-097): order quantity 4 of item Z (3500-100-136) for attachment.
*	For item K (3500-100-100): order quantity 4 of item Y (3500-100-135) for attachment.
*	For item O (3500-100-110): order quantity 2 of item Y (3500-100-135) for attachment.
*	For item P (3500-100-111): order quantity 2 of item DD (3500-100-152) for attachment.
*	For item R (3500-100-113): order quantity 4 of item V (3500-100-151) for attachment.
*	For item T (3500-100-140): order quantity 6 of item CC (3500-100-150) for attachment.

# Notes

---

# Wall-Saver Recliner, Closed Arm, Stationary

For Reference Only: 3500-000-730



**Closed Arm Cap - Standard (shown above)**

**Open Arm Cap - Optional**

# Wall-Saver Recliner, Closed Arm, Stationary

Standard Components do not include Foot Tray - 3500-000-730 (Reference Only)

Item	Stryker P/N	Part Description	Qty.
A	3500-100-116	Back Upholstered - RR/WS	1
B	* 3500-100-117	Arm upholstered, closed style, patient right	1
C	* 3500-100-118	Arm upholstered, closed style, patient left	1
D	* 3500-100-121	Seat upholstered - RR/WS	1
E	* 3500-100-122	Ottoman Upholstered - RR/WS	1
F	* 3500-100-123	Mid-Ottoman Upholstered - RR/WS	1
G	* 3500-100-141	Chair Leg with Glide	4
H	3500-100-142	Washer 5/16" ID x 1-1/8" OD x 14 GA Z	4
I	3500-100-143	Marking Nail 1-1/2" dia	4
J	3500-100-098	Arm cap set - wood finished with fasteners (Optional)	1
K	3500-100-099	Arm cap set - polyurethane with fasteners (Standard)	1
L	* 3500-100-126	Wall Saver Mechanism	1
M	* 3500-100-129	Ottoman release handle and cable	1
N	3500-100-131	Back attachment knob	2
O	3500-100-149	1/4-20X1" Hex Head Screw (not shown in drawing)	12
P	3500-100-133	1/2" Tapping Screw (not shown in drawing)	4
Q	3500-100-134	1/4-20 x 3/4" TRS QD SR MS B (not shown in drawing)	8
R	3500-100-135	1 1/2" Self Tapping Screw (not shown in drawing)	4
S	3500-100-152	#8 x 1" Pan QD TS BLK NC (not shown in drawing)	2

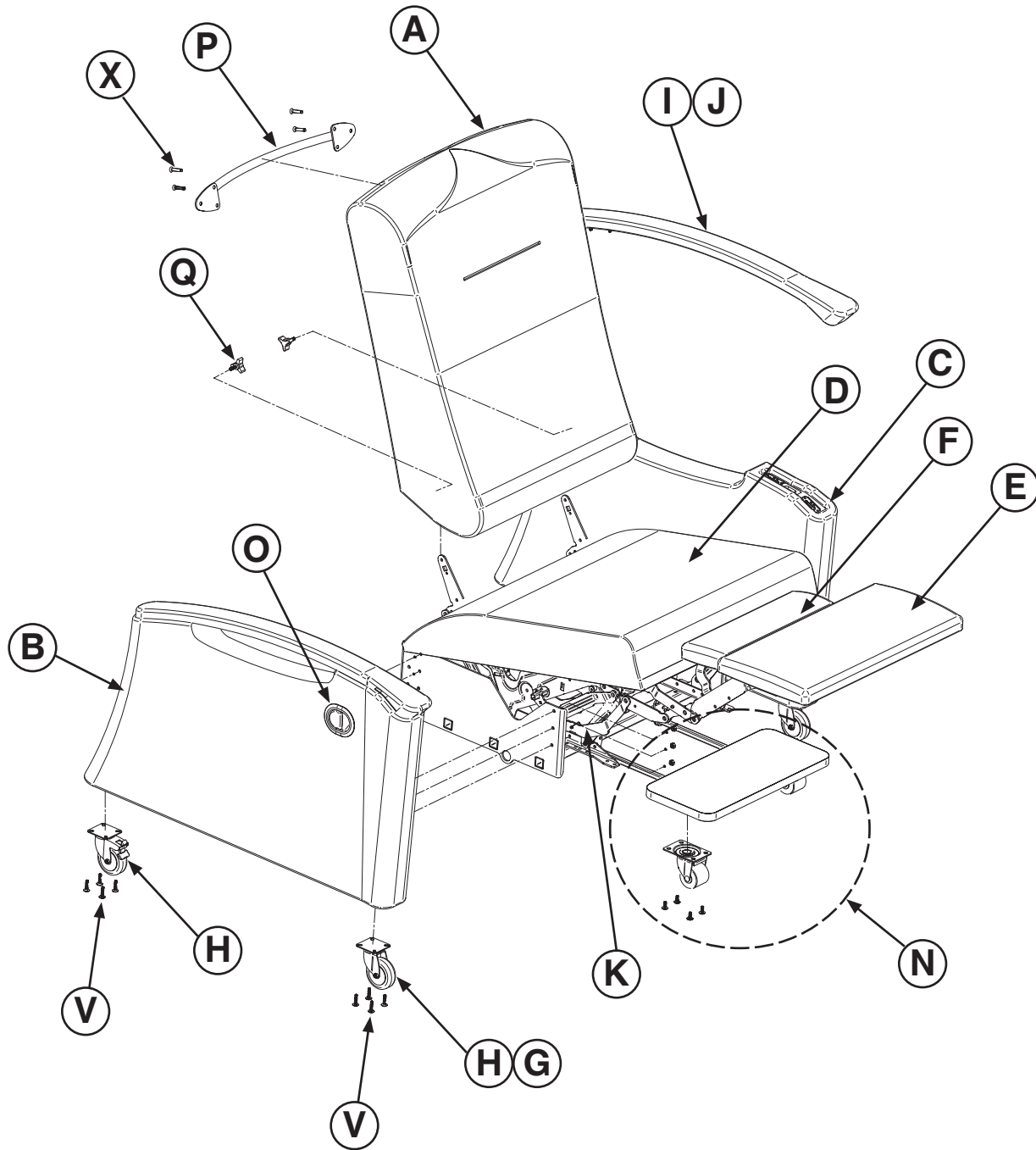
## PART ORDERING

When ordering the selected items from the part list above, order the hardware as referenced below.	
*	For item B (3500-100-117): order quantity 6 of item O (3500-100-149) for attachment.
*	For item C (3500-100-118): order quantity 6 of item O (3500-100-149) for attachment.
*	For item D (3500-100-121): order quantity 4 of item P (3500-100-133) for attachment.
*	For item E (3500-100-122): order quantity 4 of item Q (3500-100-134) for attachment.
*	For item F (3500-100-123): order quantity 4 of item Q (3500-100-134) for attachment.
*	For item G (3500-100-141): order quantity 1 of item H (3500-100-142) for attachment.
*	For item L (3500-100-126): order quantity 4 of item R (3500-100-135) for attachment.
*	For item M (3500-100-129): order quantity 2 of item S (3500-100-152) for attachment.

[Return To Table of Contents](#)

# Wall-Saver Recliner, Open Arm, Mobile

For Reference Only: 3500-000-730



**Open Arm Cap - Optional (shown above)**

**Closed Arm Cap - Standard**



# Wall-Saver Recliner, Open Arm, Mobile

Standard Components include Foot Tray, Casters, and Push Bar - 3500-000-730 (Reference Only)

Item	Stryker P/N	Part Description	Qty.
A	3500-100-116	Back Upholstered - RR/WS	1
B	* 3500-100-119	Arm upholstered, open style, patient right	1
C	* 3500-100-120	Arm upholstered, open style, patient left	1
D	* 3500-100-121	Seat upholstered - RR/WS	1
E	* 3500-100-122	Ottoman Upholstered - RR/WS	1
F	* 3500-100-123	Mid-Ottoman Upholstered - RR/WS	1
G	* 3500-100-124	3" Rigid Locking Caster (Standard Front)	2
		3" Rigid Locking Caster (Optional Front)	0
H	* 3500-100-125	3" Swivel Locking Caster (Standard Rear)	2
		3" Swivel Locking Caster (Standard Rear, Optional Front)	4
I	3500-100-147	Open arm cap set - wood finished with fasteners (Optional)	1
J	3500-100-148	Open arm cap set - polyurethane with fasteners (Standard)	1
K	* 3500-100-126	Wall-Saver Mechanism	1
N	3500-100-108	Foot tray assembly ( <a href="#">see page 41</a> )	1
O	* 3500-100-129	Ottoman release handle and cables	1
P	* 3500-100-113	Push bar rigid	1
Q	3500-100-131	Back attachment knob	2
R	3500-100-149	1/4-20 x 1" Hex Head Screw (not shown in drawing)	12
S	3500-100-133	1/2" Tapping Screw (not shown in drawing)	4
T	3500-100-134	1/4-20 x 3/4" TRS QD SR MS B (not shown in drawing)	8
U	3500-100-135	1 1/2" Self Tapping Screw (not shown in drawing)	4
V	3500-100-136	1/4-20 x 1" TRS QD MS SR BLK HP (not shown in drawing)	16
X	3500-100-151	1/4-20X1 Pan QD TS BLK NC (not shown in drawing)	4
Y	3500-100-152	#8 x 1" Pan QD TS BLK NC (not shown in drawing)	2

[Return To Table of Contents](#)

# Wall-Saver Recliner, Open Arm, Mobile

---

For Reference Only: 3500-000-730

## PART ORDERING

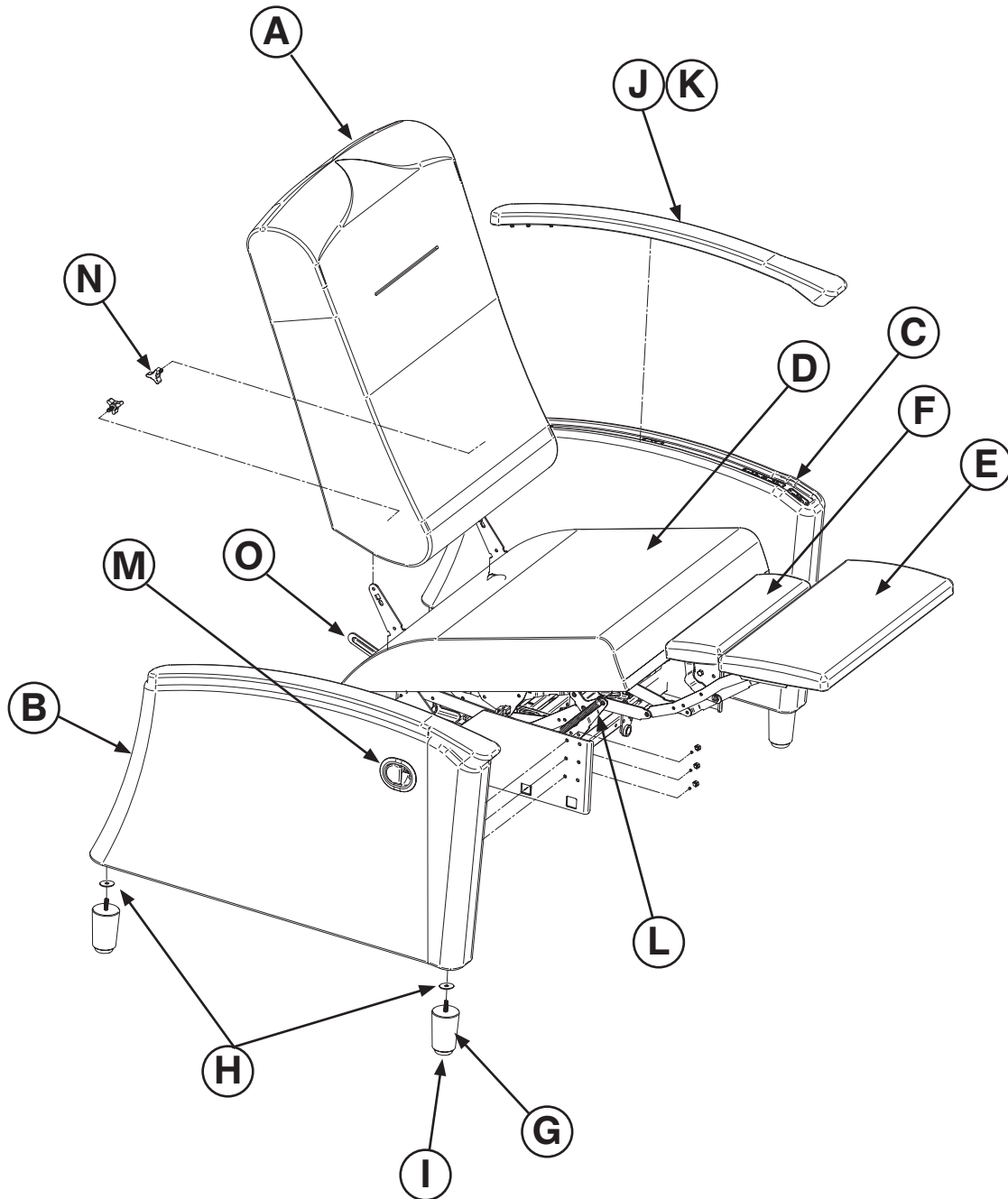
When ordering the selected items from the part list above, order the hardware as referenced below.	
*	For item B (3500-100-119): order quantity 6 of item R (3500-100-149) for attachment.
*	For item C (3500-100-120): order quantity 6 of item R (3500-100-149) for attachment.
*	For item D (3500-100-121): order quantity 4 of item S (3500-100-133) for attachment.
*	For item E (3500-100-122): order quantity 4 of item T (3500-100-134) for attachment.
*	For item F (3500-100-123): order quantity 4 of item T (3500-100-134) for attachment.
*	For item G (3500-100-124): order quantity 4 of item V (3500-100-136) for attachment.
*	For item H (3500-100-125): order quantity 4 of item V (3500-100-136) for attachment.
*	For item K (3500-100-126): order quantity 4 of item U (3500-100-135) for attachment.
*	For item O (3500-100-129): order quantity 2 of item Y (3500-100-152) for attachment.
*	For item P (3500-100-113): order quantity 4 of item X (3500-100-151) for attachment.

# Notes

---

# Rocker Recliner, Closed Arm, Stationary

Reference Part Number: 3500-000-750



**Closed Arm Cap - Standard (shown above)**

**Open Arm Cap - Optional**

# Rocker Recliner, Closed Arm, Stationary

Standard Components includes Wooden Legs - 3500-000-750 (Reference Only)

Item	Stryker P/N	Part Description	Qty.
A	3500-100-116	Back Upholstered - RR/WS	1
B	* 3500-100-117	Arm upholstered, closed style. patient right	1
C	* 3500-100-118	Arm upholstered, closed style, patient left	1
D	* 3500-100-121	Seat upholstered - RR/WS	1
E	* 3500-100-122	Ottoman Upholstered - RR/WS	1
F	* 3500-100-123	Mid-Ottoman Upholstered - RR/WS	1
G	* 3500-100-141	Chair Leg with Glide	4
H	3500-100-142	Washer 5/16" ID x 1-1/8" OD x 14 GA	4
I	3500-100-143	Marking Nail 1-1/2" dia	4
J	3500-100-098	Arm cap set - wood finished with fasteners (Optional)	1
K	3500-100-099	Arm cap set - polyurethane with fasteners (Standard)	1
L	* 3500-100-128	Rocker Mechanism	1
M	* 3500-100-129	Ottoman release handle and cable	1
N	3500-100-131	Back attachment knob	2
O	* 3500-100-144	Rocker Lock Lever	1
P	* 3500-100-145	Rocker Lock Mechanism (not shown in drawing)	1
Q	3500-100-149	1/4-20 x 1" Hex Head Screw (not shown in drawing)	12
R	3500-100-133	1/2" Tapping Screw (not shown in drawing)	6
S	3500-100-134	1/4-20 x 3/4" TRS QD SR MS B (not shown in drawing)	8
T	3500-100-135	1 1/2" Self Tapping Screw (not shown in drawing)	6
U	3500-100-152	#8 x 1" Pan QD TS BLK NC (not shown in drawing)	2

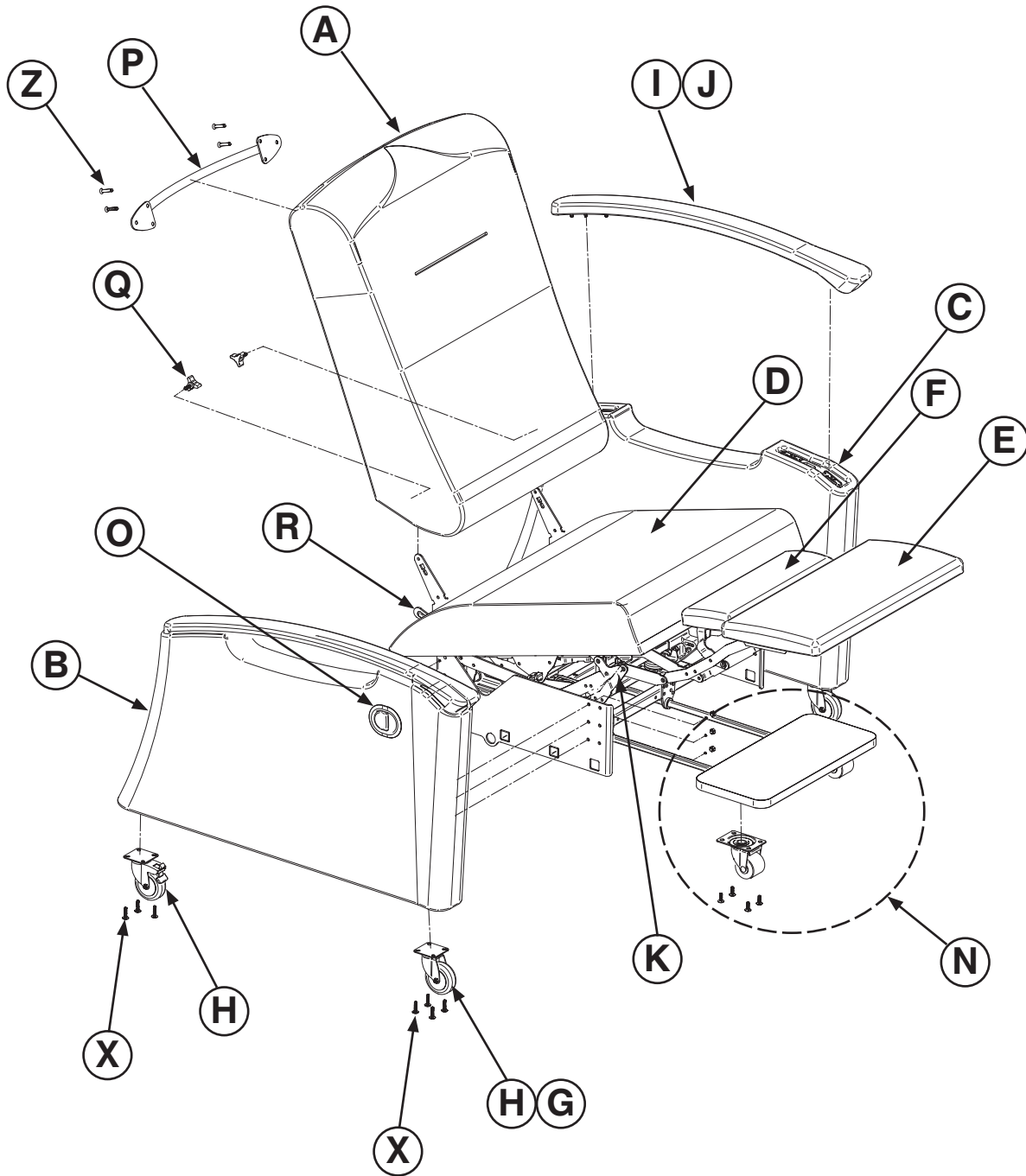
## PART ORDERING

When ordering the selected items from the part list above, order the hardware as referenced below.	
*	For item B (3500-100-117): order quantity 6 of item Q (3500-100-149) for attachment.
*	For item C (3500-100-118): order quantity 6 of item Q (3500-100-149) for attachment.
*	For item D (3500-100-121): order quantity 4 of item R (3500-100-133) for attachment.
*	For item E (3500-100-122): order quantity 4 of item S (3500-100-134) for attachment.
*	For item F (3500-100-123): order quantity 4 of item S (3500-100-134) for attachment.
*	For item G (3500-100-141): order quantity 1 of item H (3500-100-142) for attachment.
*	For item L (3500-100-128): order quantity 4 of item T (3500-100-135) for attachment.
*	For item M (3500-100-129): order quantity 2 of item U (3500-100-152) for attachment.
*	For item O (3500-100-144): order quantity 2 of item R (3500-100-133) for attachment.
*	For item P (3500-100-145): order quantity 2 of item T (3500-100-135) for attachment.

[Return To Table of Contents](#)

# Rocker Recliner, Open Arm, Mobile

For Reference Only: 3500-000-750



**Open Arm Cap - Optional (shown above)**

**Closed Arm Cap - Standard**

# Rocker Recliner, Open Arm, Mobile

Standard Components include Foot Tray, Casters, Push Bar - 3500-000-750 (Reference Only)

Item	Stryker P/N	Part Description	Qty.
A	3500-100-116	Back Upholstered - RR/WS	1
B	* 3500-100-119	Arm upholstered, open style, patient right	1
C	* 3500-100-120	Arm upholstered, open style, patient left	1
D	* 3500-100-121	Seat upholstered - RR/WS	1
E	* 3500-100-122	Ottoman Upholstered - RR/WS	1
F	* 3500-100-123	Mid-Ottoman Upholstered - RR/WS	1
G	* 3500-100-124	3" Rigid Locking Caster (Standard Front)	2
		3" Rigid Locking Caster (Optional Front)	0
H	* 3500-100-125	3" Swivel Locking Caster (Standard Rear)	2
		3" Swivel Locking Caster (Standard Rear, Optional Front)	4
I	3500-100-147	Open arm cap set - wood finished with fasteners (Optional)	1
J	3500-100-148	Open arm cap set - polyurethane with fasteners (Standard)	1
K	* 3500-100-128	Rocker Mechanism	1
N	3500-100-108	Foot tray assembly ( <a href="#">see page 41</a> )	1
O	* 3500-100-129	Ottoman release handle and cables	1
P	* 3500-100-113	Push bar rigid	1
Q	3500-100-131	Back attachment knob	2
R	* 3500-100-144	Rocker Lock Lever	1
S	* 3500-100-145	Rocker Lock Mechanism (not shown in drawing)	1
T	3500-100-149	1/4-20 x 1" Hex Head Screw	12
U	3500-100-133	1/2" Tapping Screw (not shown in drawing)	6
V	3500-100-134	1/4-20 x 3/4" TRS QD SR MS B (not shown in drawing)	8
W	3500-100-135	1 1/2" Self Tapping Screw (not shown in drawing)	6
X	3500-100-136	1/4-20 x 1" TRS QD MS SR BLK HP (not shown in drawing)	16
Z	3500-100-151	1/4-20 x 1-1/4" Flat QUAD MS ZC	4
AA	3500-100-152	#8 x 1" Pan QD TS BLK NC	2

[Return To Table of Contents](#)

# Rocker Recliner, Open Arm, Mobile

---

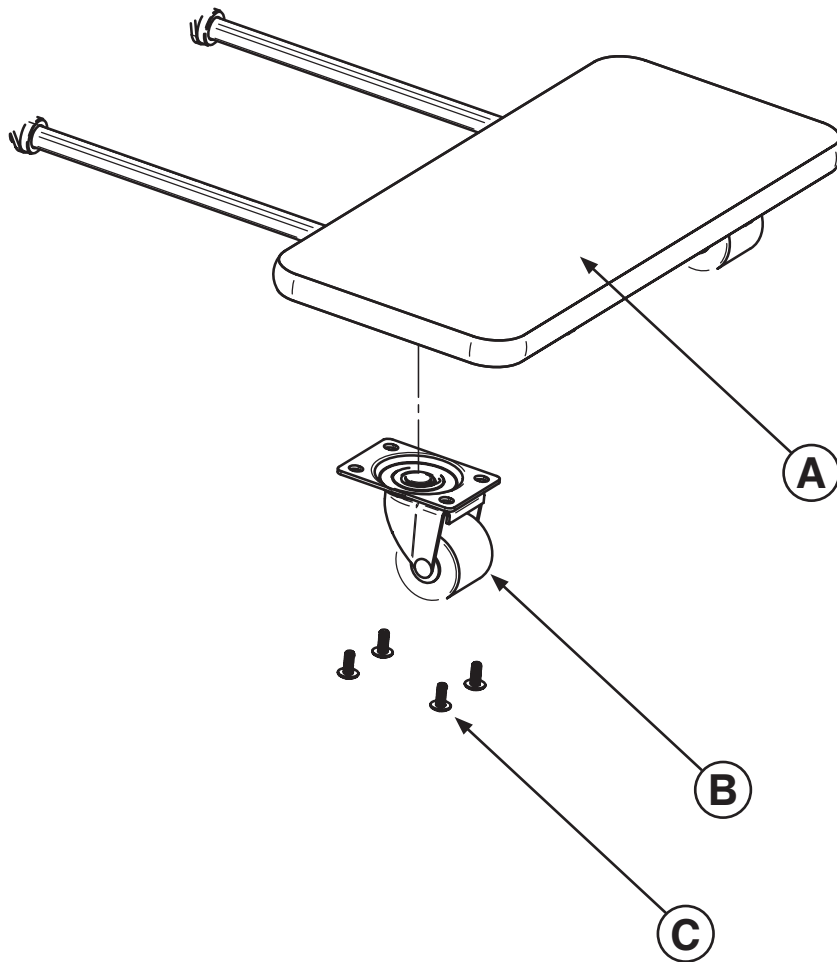
For Reference Only: 3500-000-750

## PART ORDERING

When ordering the selected items from the part list above, order the hardware as referenced below.	
*	For item B (3500-100-119): order quantity 6 of item T (3500-100-149) for attachment.
*	For item C (3500-100-120): order quantity 6 of item T (3500-100-149) for attachment.
*	For item D (3500-100-121): order quantity 4 of item U (3500-100-133) for attachment.
*	For item E (3500-100-122): order quantity 4 of item V (3500-100-134) for attachment.
*	For item F (3500-100-123): order quantity 4 of item V (3500-100-134) for attachment.
*	For item G (3500-100-124): order quantity 4 of item X (3500-100-136) for attachment.
*	For item H (3500-100-125): order quantity 4 of item X (3500-100-136) for attachment.
*	For item K (3500-100-128): order quantity 4 of item W (3500-100-135) for attachment.
*	For item O (3500-100-129): order quantity 2 of item AA (3500-100-152) for attachment.
*	For item P (3500-100-113): order quantity 4 of item Z (3500-100-151) for attachment.
*	For item R (3500-100-144): order quantity 2 of item U (3500-100-133) for attachment.
*	For item S (3500-100-145): order quantity 2 of item W (3500-100-135) for attachment.



# Foot Tray Assembly Kit - 3500-100-108



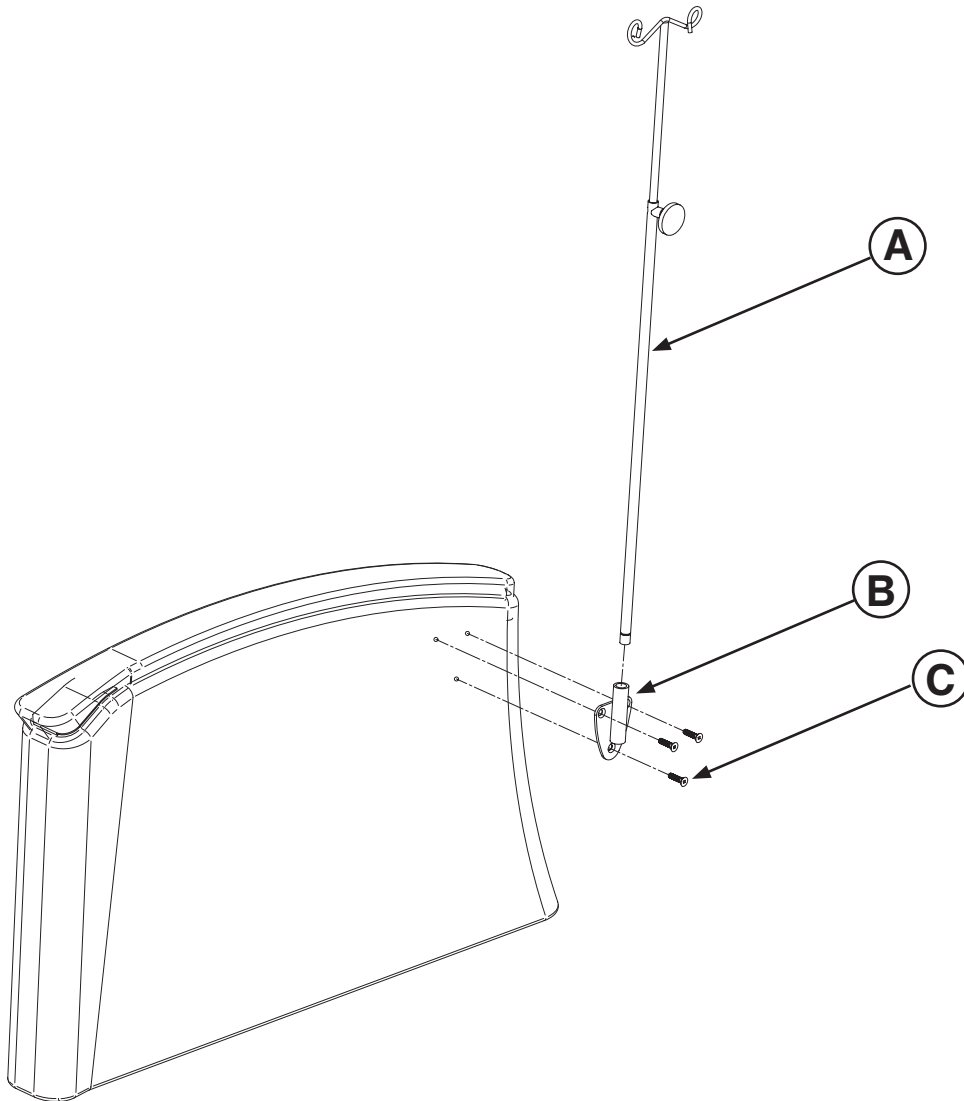
**Note:** When ordering the Foot Tray Assembly Kit, the rails and casters will be attached to the foot tray tablet.

Item	Stryker P/N	Part Description	Qty.
A	3500-100-106	Foot Tray Tablet	1
B	3500-100-107	Foot Tray Caster	2
C	3500-100-137	1/4-20 X 5/8" TRS QD MS SR BK HR (For Mobile Units Only)	8
D	3500-100-136	1/4-20 x 1" TRS QD MS SR BLK HP (not shown in drawing) <b>Note: Secures tablet to rail.</b>	4

[Return To Table of Contents](#)

# Optional I.V. Pole - 3500-100-103

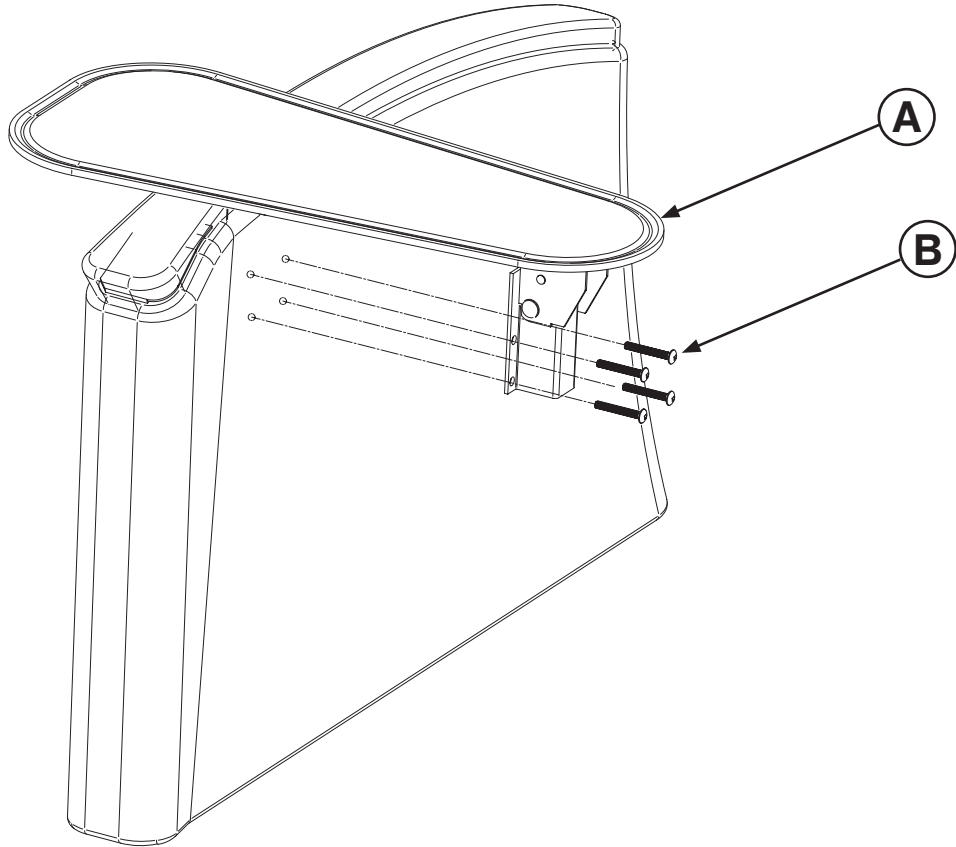
(Treatment Recliners Only)



Item	Stryker P/N	Part Description	Qty.
A	3500-100-103	I.V. Pole	1
B	3500-100-104	I.V. Pole Bracket	1
C	3500-100-151	1/4-20 x 1-1/4" Flat QUAD MS ZC	3

# Optional Side Tray - 3500-100-105

(Treatment Recliners Only)

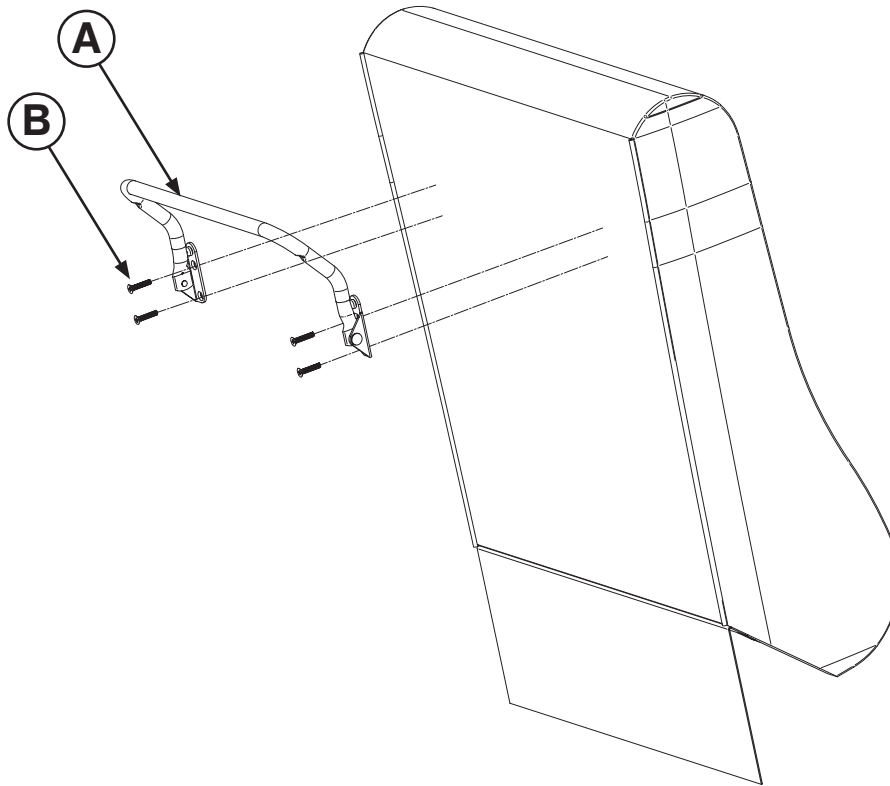


Item	Stryker P/N	Part Description	Qty.
A	3500-100-105	Side Tray	1
B	3500-100-153	1/4-20 x 2-3/4" Pan Head QD SR ZC	4

[Return To Table of Contents](#)

# Optional Hinged Push Bar - 3500-100-114

(Mobile Recliners Only)



Item	Stryker P/N	Part Description	Qty.
A	3500-100-114	Push Bar Hinged	1
B	3500-100-151	1/4-20 x 1-1/4" Flat QUAD MS ZC	4

# Warranty

---

Stryker Medical stands behind the craftsmanship of our products. Providing our customers quality products is our mission, and we pledge to do everything we can to quickly resolve any problems encountered within the terms of the warranties listed below. These warranties apply only to products manufactured after August 1, 2006.

## LIMITED LIFETIME WARRANTY

Stryker Medical warrants our Symmetry® II & Symmetry PLUS seating lines for the lifetime of the product, classified as 10 years, under normal use and proper care. Subject to the limitations set below, Stryker will repair or, at our option, replace defective merchandise free of charge.

### Symmetry® PLUS Recliners

- 10 years on casters, metal arms, metal bases, metal frames, glass-reinforced nylon bases and plastic-engineered components.
- 10 years on metal reclining mechanism (first 5 years—parts, labor and shipping; after 5 years to 10 years—parts only).
- 5 years on seat springs, wood frame components, wood arms and wood bases.
- 3 years on Stryker Medical textiles and foam.

### Symmetry® II Patient & Guest Seating

- 10 years on wood.
- 5 years on steel components.
- 3 years on Stryker Medical textiles and foam.

### Symmetry® II Sleepers

- 10 years on wood.
- 5 years on mechanism.
- 3 years on casters, seat springs, mattress and Stryker Medical textiles and foam.

## ONE YEAR WARRANTY

Stryker warrants the following products for one year under normal use and proper care. For one year from date of shipment, Stryker will repair or, at our option, replace defective merchandise free of charge (parts, labor and shipping included).

- Tru-Fit® Overbed Tables
- Bedside Stands (\*Note: LIFETIME WARRANTY on metal drawer frames and glides)
- Maternity Furniture
- Flexsteel Hospital Recliner

The Limited Lifetime and One Year warranties listed above are void in cases of modifications, misuse, improper assembly or maintenance, accidents, damage caused by a carrier other than Stryker Medical, and the use of customer's own material.

Stryker makes no other warranty or representation, either expressed or implied, except as set forth herein. There is no warranty of merchantability and there are no warranties of fitness for any particular purpose. In no event shall Stryker be liable hereunder for incidental or consequential damages arising from or in any manner related to sales or use of any such equipment.

# Warranty

---

## SERVICE CONTRACT COVERAGE

Stryker has developed a comprehensive program of service contract options designed to keep your equipment operating at peak performance at the same time it eliminates unexpected costs. We recommend that these programs be activated before the expiration of the new product warranty to eliminate the potential of additional equipment upgrade charges.

### A Service Contract helps to:

- Ensure equipment reliability
- Stabilize maintenance budgets
- Diminish downtime
- Establish documentation for JCAHO
- Increase product life
- Enhance trade-in value
- Address risk management and safety

## SERVICE CONTRACT PROGRAMS

Stryker offers the following service contract programs:

Service Agreement Options *	Gold	Silver	Parts	Labor	PM
Annually scheduled preventative maintenance	X				X
All parts	X	X	X		
All labor and travel	X	X		X	
Unlimited emergency service calls	X	X		X	
Priority one contact: two hour phone response	X	X	X	X	
Most repairs completed within 3 days	X	X		X	
JCAHO documentation	X	X		X	X
On-site record of PM & emergency service	X				X
Factory-trained Stryker service technician	X	X		X	X
Stryker authorized parts used	X	X	X	X	X
Service during regular business hours (8–5)	X	X	X	X	X

\* Does not include maintenance due to abuse or for any disposable items. Stryker reserves the right to change options without notice.

Stryker Medical also offers personalized service contracts.  
Pricing is determined by age, location, model and condition of product.

**For more information on our service contracts,  
please call your local representative.**

# Warranty

---

## TO OBTAIN PARTS AND SERVICE

Stryker products are supported by a nationwide network of dedicated Stryker Field Service Representatives. These representatives are factory trained, available locally, and carry a substantial spare parts inventory to minimize repair time. Simply call your local representative, or call Stryker Customer Service USA at 1-800-327-0770.

## RETURN AUTHORIZATION

Merchandise cannot be returned without approval from the Stryker Customer Service Department. An authorization number will be provided which must be printed on the returned merchandise. Stryker reserves the right to charge shipping and restocking fees on returned items. Special, modified, or discontinued, items not subject to return.

## DAMAGED MERCHANDISE

ICC Regulations require that claims for damaged merchandise must be made with the carrier within fifteen (15) days of receipt of merchandise. **Do not accept damaged shipments unless such damage is noted on the delivery receipt at the time of receipt.** Upon prompt notification, Stryker will file a freight claim with the appropriate carrier for damages incurred. Claim will be limited in amount to the actual replacement cost. In the event that this information is not received by Stryker within the fifteen (15) day period following the delivery of the merchandise, or the damage was not noted on the delivery receipt at the time of receipt, the customer will be responsible for payment of the original invoice in full. Claims for any short shipment must be made within thirty (30) days of invoice.

## INTERNATIONAL WARRANTY CLAUSE

This warranty reflects U.S. domestic policy. Warranty outside the U.S. may vary by country. Please contact your local Stryker Medical representative for additional information.





Stryker Medical  
3800 E. Centre Ave.  
Portage, Michigan  
49002

**stryker**<sup>®</sup>

Manufactured for Stryker

2009/01

3502-009-001 REV C

[www.stryker.com](http://www.stryker.com)