

Tru-Fit[®] Overbed Table

REF 3150

stryker[®]

Operations/Maintenance Manual



Table of Contents


Introduction	4
Intended Use	4
Specifications	4
Warning / Caution / Note Definition.	5
Symbols.	5
Summary of Safety Precautions	6
Operations	7
Single-top With or Without Optional Vanity Operation	7
Split-top With Optional Vanity Operation	8
Clip Operation	9
Bin Operation	10
Preventative Maintenance	11
Checklist	11
Cleaning.	11
Troubleshooting Guide	12
Service Information.	13
Optional Storage Compartment Replacement	13
Primary Top Replacement (Single-top and Single-top With Vanity Only)	13
Primary Top Replacement (Split-top With Vanity Only).	14
Secondary Top Replacement (Split-top Only)	14
Upper Column Replacement.	15
Gas Spring Replacement	15
Caster Assembly Replacement.	16
Caster Replacement	16
Base Cover Replacement.	17
Vanity Tray Replacement (Single-top Only)	18
Vanity Tray Replacement (Split-top Only)	18
Vanity Tray Mirror Replacement	19
Single-top Overbed Table Assembly, Without Vanity.	20
Single-top Overbed Table Assembly, With Vanity	23
Split-top Overbed Table Assembly, Without Storage.	26
Single-top Overbed Table Assembly, With Storage.	30
Single-top Overbed Table Assembly, With Vanity, With Storage	34
Split-top Overbed Table Assembly, With Storage	39
Gas Spring.	44
Warranty	45
One Year Warranty	45
To Obtain Parts and Service	45
Return Authorization.	45
Damaged Merchandise	45
International Warranty Clause.	45
Service Contract Coverage	46
Service Contract Programs	46

Introduction

INTENDED USE

This manual is designed to assist you with the maintenance of Stryker Overbed Table, Model 3150. Carefully read this manual thoroughly before using the equipment or beginning maintenance on it. To ensure safe operation of this equipment, it is recommended that methods and procedures be established for educating and training staff on the safe operation of this product.

SPECIFICATIONS

	* Safe Working Load	25 lbs
---	---------------------	--------

OVERBED TABLE WITHOUT OPTIONAL STORAGE COMPARTMENT

	Single-top Without Vanity	Single-top With Vanity	Split-top With Vanity
Base Length	32"	32"	32"
Overall Table Top Length/Width	31" / 17.5"	31" / 17.5"	31" / 17.5"
Minimum/Maximum Table Top Height	27" / 43.75"	27" / 43.75"	29" / 45.5"
Weight of Table	43 pounds	50 pounds	61 pounds
Weight Capacity of Table *	75 pounds	75 pounds	75 pounds

OVERBED TABLE WITH OPTIONAL STORAGE COMPARTMENT

	Single-top Without Vanity	Single-top With Vanity	Split-top With Vanity
Base Length	32"	32"	32"
Overall Table Top Length/Width	42.75" / 17.5"	42.75" / 17.5"	42.75" / 17.5"
Minimum/Maximum Table Top Height	27" / 43.75"	27" / 43.75"	29" / 45.5"
Weight of Table	68 pounds	75 pounds	86 pounds
Weight Capacity of Table *	75 pounds	75 pounds	75 pounds

SAFE OPERATING LOADS OF OPTIONAL STORAGE COMPARTMENT

Top Shelf	20 pounds
Bottom Shelf	20 pounds

Stryker reserves the right to change specifications without notice.

Introduction

WARNING / CAUTION / NOTE DEFINITION

The words WARNING, CAUTION, and NOTE carry special meanings and should be carefully reviewed.

WARNING

Alerts the reader about a situation, which if not avoided, could result in death or serious injury. It may also describe potential serious adverse reactions and safety hazards.

CAUTION

Alerts the reader of a potentially hazardous situation, which if not avoided, may result in minor or moderate injury to the user or patient or damage to the equipment or other property. This includes special care necessary for the safe and effective use of the device and the care necessary to avoid damage to a device that may occur as a result of use or misuse.

Note

This provides special information to make maintenance easier or important instructions clearer.

Symbols



Warning, consult accompanying documentation



Safe Working Load Symbol

Summary of Safety Precautions

WARNINGS

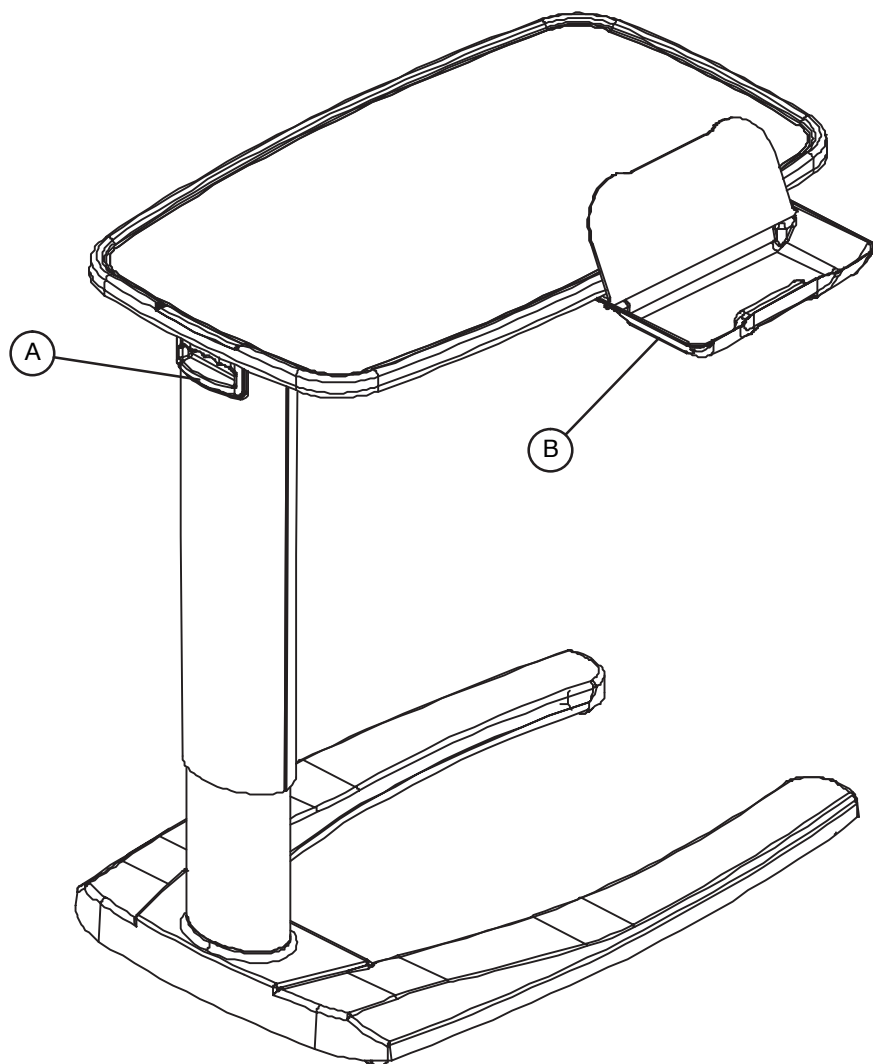
- Do not lean on table. Leaning on table may cause the table to tip which may result in injury to the individual or damage to the unit.
 - To avoid personal injury or damage to the table, support the table top before removing the screws or nuts securing it to the top support.
 - To avoid personal injury or damage to the table, while turning the table top over, securely hold the top on the sides to prevent the primary and secondary tops from separating.
-

CAUTIONS

- Use discretion in the placement of personal items located near or by biohazardous/unsanitary materials.
 - Do not apply lubricant of any kind to the gas spring. Lubricant will damage the gas spring.
 - Make sure that nothing is on top of the unit and that you have the unit fully supported so not to cause damage to the overbed table nor to cause injury to yourself.
-

Operations

SINGLE-TOP WITH OR WITHOUT OPTIONAL VANITY OPERATION



To operate the table:

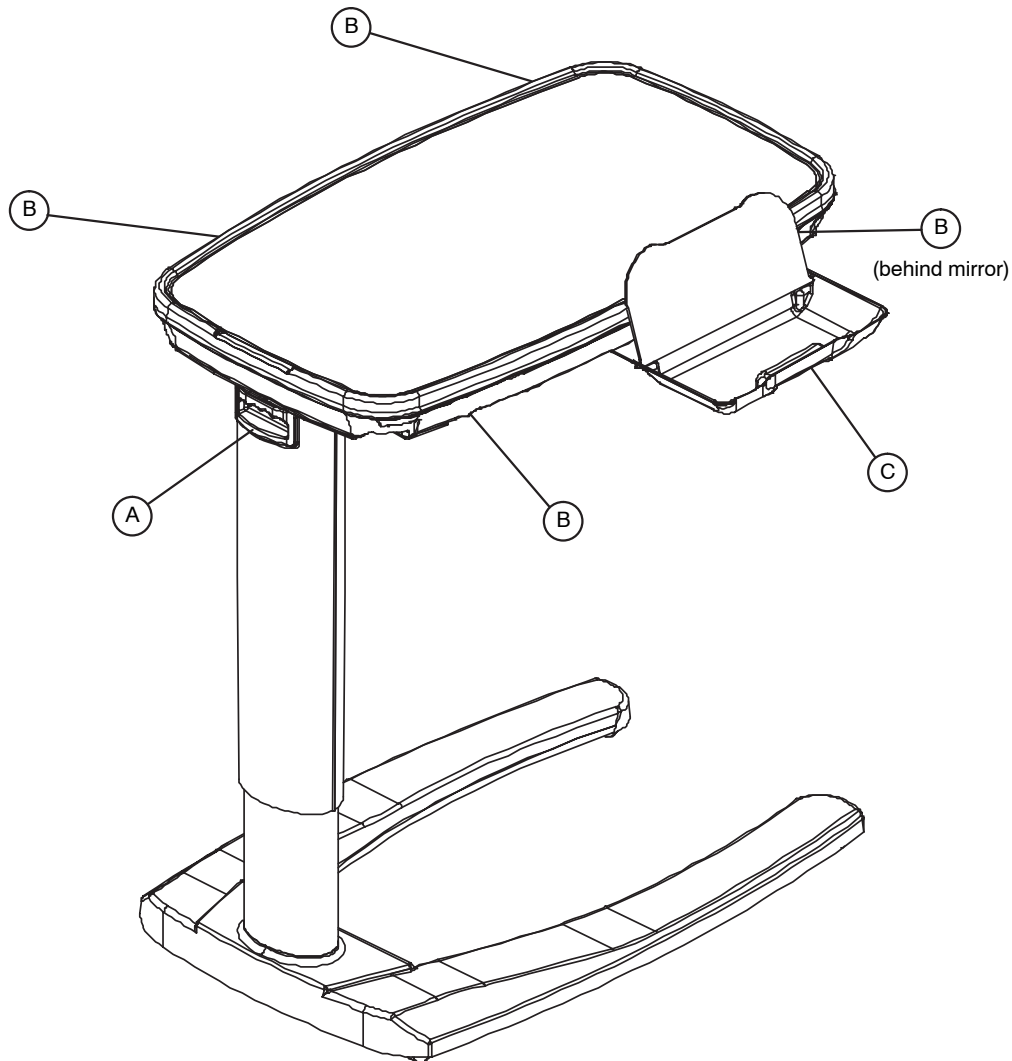
1. Pull up on the table top to raise it.
2. To unlock and lower the table top, squeeze handle (A) while guiding the table top down.
3. Pull out the optional vanity (B) with the flip up mirror in either direction (if equipped).

WARNING

Do not lean on table. Leaning on table may cause the table to tip which may result in injury to the individual or damage to the unit.

Operations

SPLIT-TOP WITH OPTIONAL VANITY OPERATION



To operate the table:

1. Pull up on the table top to raise it.
2. To unlock and lower the table top, squeeze handle (A) while guiding the table top down.
3. Grasp and pull any of the four handles (B) to slide out the secondary top in either direction.
4. Pull out the vanity (C) with the flip up mirror in either direction.

WARNING

Do not lean on table. Leaning on table may cause the table to tip which may result in injury to the individual or damage to the unit.

Operations

CLIP OPERATION



To connect a bag to the bag clip:

1. Push the clip back.
2. Insert the waste bag.
3. Release the clip.

 **WARNING**

Do not lean on table. Leaning on table may cause the table to tip which may result in injury to the individual or damage to the unit.

[Return To Table of Contents](#)

Operations

BIN OPERATION



To operate the bin:

1. Pull bin out to access storage.
2. Push bin in to close.

 **WARNING**

Do not lean on table. Leaning on table may cause the table to tip which may result in injury to the individual or damage to the unit.

Preventative Maintenance

CHECKLIST

- _____ All fasteners secure.
- _____ Top and laminate intact - not damaged.
- _____ Top edge mold intact - not damaged.
- _____ Release handle locking and releasing properly.
- _____ All casters secure and swiveling properly.
- _____ No debris in casters.
- _____ Base cover intact - not damaged.
- _____ Optional pull-out vanity and mirror intact and secure.
- _____ Optional Storage Compartment intact - not damaged.

CAUTION

Do not apply lubricant of any kind to the gas spring. Lubricant will damage the gas spring.

Overbed Table Serial Number:		

Completed by: _____ Date: _____

Cleaning

The Center for Disease Control recommends a 1:4 mixture of bleach and water for disinfection. Thoroughly rinse the solution from the product surface. If other hospital-grade cleaning agents are used, follow the instructions provided by the cleaning solution's manufacturer. Wipe the surface with a soft, dry cloth to remove any moisture.

As part of routine maintenance, follow steps 1-5 of the upper column replacement procedure on [page 15](#) to remove the top assembly from the base assembly. Use a soft cloth to remove dust and debris from the top weldment tube and the inside of the base column. Spray the top weldment tube with pure silicone spray before reassembly. **DO NOT** use WD-40 or any other lubricant or damage to the table could occur.

Troubleshooting Guide

Identify the problem from the table below and follow the instructions for resolution. If assistance is needed at any time during troubleshooting, please contact a service technician at 1-800-327-0770 option 2.

Problem / Failure	Recommended Action
Table drifts up.	Make sure original table top and storage compartment (if applicable) remain attached to the base. If so, then replace the gas spring (see page 15).
Table drifts down without weight on table top.	If the table is difficult to raise and drops back down when released, replace the gas spring (see page 15).
Table has a spongy feeling.	This is normal as long as long as it does not drift down.
Table drifts down with weight on table top.	Adjust the gas spring lock pin for more clearance so there is a little play in the handle.
Table randomly drifts down with light weight load applied.	Replace gas spring (see page 15).
Squeaky noise in between base and column.	Add 1/4" washers under the four main base bolts. NOTE: Remove and reinstall bolts one at a time.

Service Information

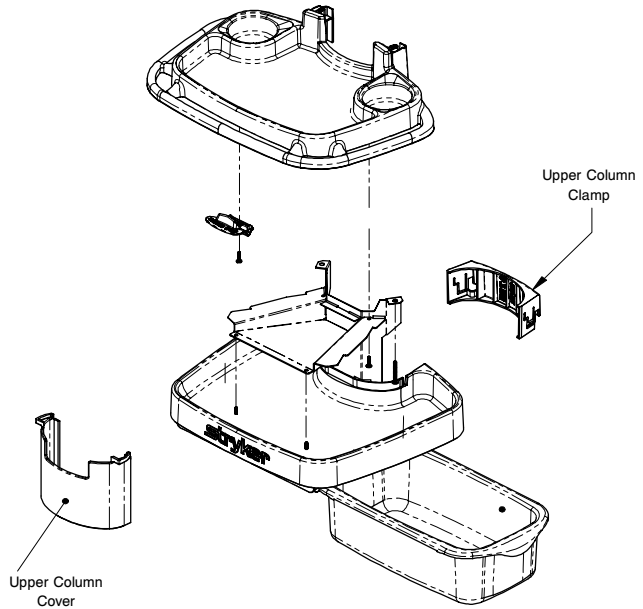
OPTIONAL STORAGE COMPARTMENT REPLACEMENT

Tools Required:

- T25 Torx Driver
- T27 Torx Driver
- Regular Screwdriver

Procedure:

1. Raise the table to its full height.
2. Remove the upper column cover by pulling outward slightly on both sides and pulling out and down.
3. Using a regular screwdriver, unlock the lock tabs and remove the upper column clamp.
4. Using a T25 Torx driver, remove the T25 Torx screw from the top front of the upper column.
5. Using a T27 Torx driver, remove the two screws that hold the storage weldment to the upper weldment.
6. Remove the storage compartment.
7. Reverse this procedure to reinstall the storage compartment.



PRIMARY TOP REPLACEMENT (SINGLE-TOP AND SINGLE-TOP WITH VANITY ONLY)

Tools Required:

- #2 Phillips Screwdriver

WARNING

To avoid personal injury or damage to the table, support the table top before removing the screws securing it to the top support.

Procedure:

1. If your unit has a storage compartment, follow the procedures above for Storage Compartment Replacement, then proceed to step 2.
2. Lift the table to its highest height.
3. Using a Phillips screwdriver, remove the four #2 Phillips screws under the table top that hold the top to the support weldment.
4. Lift off the table top.
5. If your unit has a vanity tray installed, follow steps 5a through 5c. If not, proceed to step 6.
 - a. Turn the table top over.
 - b. Using a Phillips screwdriver, remove the ten #10 Phillips screws that hold the vanity tracks to the bottom of the table top.
 - c. Remove the vanity tray from the table top.
6. Reverse procedures to install the new top.

[Return To Table of Contents](#)

Service Information

PRIMARY TOP REPLACEMENT (SPLIT-TOP WITH VANITY ONLY)

Tools Required:

- #2 Phillips Screwdriver
- 3/8" Nut Driver

WARNING

To avoid personal injury or damage to the table, support the table top before removing the screws securing it to the top support.

Procedure:

1. If your unit has a storage compartment, follow the procedures on [page 13](#) for Storage Compartment Replacement, then proceed to step 2.
2. Lift the table to its highest height.
3. Using a 3/8" nut driver, remove the 3/8" acorn nuts from the bottom of the table at each of the four corners.
4. Lift off the table top.

WARNING

To avoid personal injury or damage to the table, while turning the table top over, securely hold the top on the sides to prevent the primary and secondary tops from separating.

5. Turn the table top upside down and separate the primary and secondary tops.
6. Using a Phillips screwdriver, remove the six #10 Phillips screws that hold the two slides on the primary table top and set them aside.
7. Reverse procedures to install the new top.

SECONDARY TOP REPLACEMENT (SPLIT-TOP ONLY)

Tools Required:

- 3/8" Nut Driver

WARNING

To avoid personal injury or damage to the table:

- Support the table top before removing the screws securing it to the top support.
 - While turning the table top over, securely hold the top on the sides to prevent the primary and secondary tops from separating.
-

Procedure:

1. If your unit has a storage compartment, follow the procedures on [page 13](#) for Storage Compartment Replacement, then proceed to step 2.
2. Using a 3/8" nut driver, remove the 3/8" acorn nuts from the bottom of the table at each of the four corners.
3. Lift off the table top.
4. Turn the table top upside down and separate the primary and secondary tops.
5. Turn over the secondary top, turn the vanity tray approximately 45 degrees and remove it from the table top.
6. Reverse procedures to install the new top.

Service Information

UPPER COLUMN REPLACEMENT

Tools Required:

- #2 Phillips Screwdriver
- T25 Torx Driver
- T27 Torx Driver

Procedure:

1. If your unit has a storage compartment, follow the procedures on [page 13](#) for Storage Compartment Replacement, then proceed to step 2.
2. Using a T25 Torx driver, remove the three T25 Torx screws from the top of the upper column and lower the column down to the base.
3. Using a T27 Torx driver, remove the two opposing T27 Torx screws that connect the upper bushing to the lower column.
4. Lift the top assembly straight up and out of the lower column and set it aside.
5. Reverse procedures to reassemble.

GAS SPRING REPLACEMENT

Tools Required:

- T25 Torx Driver
- T27 Torx Driver
- Pliers

Procedure:

1. If your unit has a storage compartment, follow the procedures on [page 13](#) for Storage Compartment Replacement, then proceed to step 2.
2. Using a T25 Torx driver, remove the three T25 Torx screws from the top of the upper column.
3. Lower the column down to the base.
4. Using a T27 Torx driver, remove the two opposing T27 Torx screws that connect the upper bushing to the lower column.
5. Using pliers, remove the gas spring release lever (as shown) from the gas cylinder. Gently push down on the lever and pull it out while moving it slightly from side to side.
6. Lift the top assembly out of the lower column and set it aside.
7. Remove the rive clip from the clevis pin that holds the gas spring assembly to the top weldment and remove the clevis pin.
8. Reverse to install the new gas spring.

NOTES:

When reinstalling the gas cylinder, align the threaded stud with the hole in the bottom of the lower column before placing the top assembly above the lower column.

When reinstalling the upper bushing, compress the gas spring slightly before tightening the two T27 Torx screws that connect the upper bushing to the lower column.



Gas Spring Release Lever Removal

Service Information

CASTER ASSEMBLY REPLACEMENT

Tools Required:

- Cordless Drill, 3/16" Drill Bit
- Pop Rivet Gun with 3/16" Tip

Procedure:

1. Fully raise the table top.
2. While maintaining a secure grip on the table, carefully flip it forward or turn it on its side to allow access to the damaged caster.
3. Using a cordless drill and 3/16" drill bit, drill out the two rivets and remove the damaged caster.
4. Using a pop rivet gun with a 3/16" tip, install the new caster using two new pop rivets.

CASTER REPLACEMENT

Tools Required:

- Wheel removal tool (3150-001-202)
- T27 Torx driver (if needed)

Procedure:

1. Fully raise the table top.
2. While maintaining a secure grip on the table, carefully tip it forward or turn it on its side to allow access to the damaged caster.
3. For model 3150 overbed tables only, if equipped with leg ballasts, using a T27 Torx driver, remove the truss head screw to remove the leg ballast that blocks the removal of the caster wheel. Save all parts.
4. Using the supplied wheel removal tool (3150-001-202), remove the caster wheel.

NOTE: Make sure that the wheel is facing the wheel removal tool with the stem facing away from the wheel removal tool.

5. Press to install the new caster wheel (3150-001-201).
6. If equipped, reinstall the leg ballast that was removed in step 3. Using a T27 torx driver, hand-tighten the truss head screws to secure the leg ballasts in place.

NOTE: Do not overtighten the screws to avoid stripping them out.

7. Verify proper operation of the product before returning it to service.



Service Information

BASE COVER REPLACEMENT

Tools Required:

- #2 Phillips Screwdriver
- T25 Torx Driver
- T27 Torx Driver
- 3/8" Ratchet
- 3/8" Nut Driver
- 7/16" Socket

WARNING

To avoid personal injury or damage to the table, support the table top before removing the screws securing it to the top support.

Procedure:

1. If your unit has a storage compartment, follow the procedures on [page 13](#) for Storage Compartment Replacement, then proceed to step 2.
2. While holding the upper column, use a T25 Torx driver and remove the three T25 Torx screws from the top of the upper column then lower the column down to the base.
3. Using the T27 Torx driver, remove the two opposing T27 Torx screws that connect the upper bushing to the lower column.
4. Lift the top assembly straight up and out of the lower column and set it aside.
5. Lift the upper column off the lower column and remove it from the base.
NOTE: It is easier to perform the next step while sitting on a chair.
6. Flip the base and lower column over and rest the lower column on the top of your thigh.
7. Using the T27 Torx driver, remove the four T27 Torx screws from the bottom of the base that hold the column assembly and remove the lower column.
8. Turn the base and cover over. Using the Phillips screwdriver, remove the six #8 Phillips screws that hold the cover to the base.
9. Turn the base back over and remove the cover.
10. Reverse procedures to install the new cover.

Service Information

VANITY TRAY REPLACEMENT (SINGLE-TOP ONLY)

Tools Required:

- #2 Phillips Screwdriver

WARNING

To avoid personal injury or damage to the table, support the table top before removing the screws securing it to the top support.

Procedure:

1. Raise the table top to its highest height.
2. Using a Phillips screwdriver, remove the four #10 Phillips screws under the table top that hold the top to the support weldment.
3. Lift off the table top.
4. Turn over the table top.
5. Using a Phillips screwdriver, remove the five #10 Phillips screws that hold one of the vanity tracks to the bottom of the table top.
6. Remove the vanity from the table top.
7. Reverse procedures to install the new vanity tray.

VANITY TRAY REPLACEMENT (SPLIT-TOP ONLY)

Tools Required:

- 3/8" Nut Driver

WARNING

To avoid personal injury or damage to the table, support the table top before removing the nuts securing it to the top support.

Procedure:

1. Raise the table top to its highest height.
2. Using a 3/8" nut driver, remove the 3/8" acorn nuts from the bottom of the table at each of the four corners.
3. Lift off the table top.

WARNING

To avoid personal injury or damage to the table, while turning the table top over, securely hold the top on the sides to prevent the primary and secondary tops from separating.

4. Turn over the table top, turn the vanity tray approximately 45° and remove it from the table top.
5. Reverse procedures to install the new vanity tray.

Service Information

VANITY TRAY MIRROR REPLACEMENT

Tools Required:

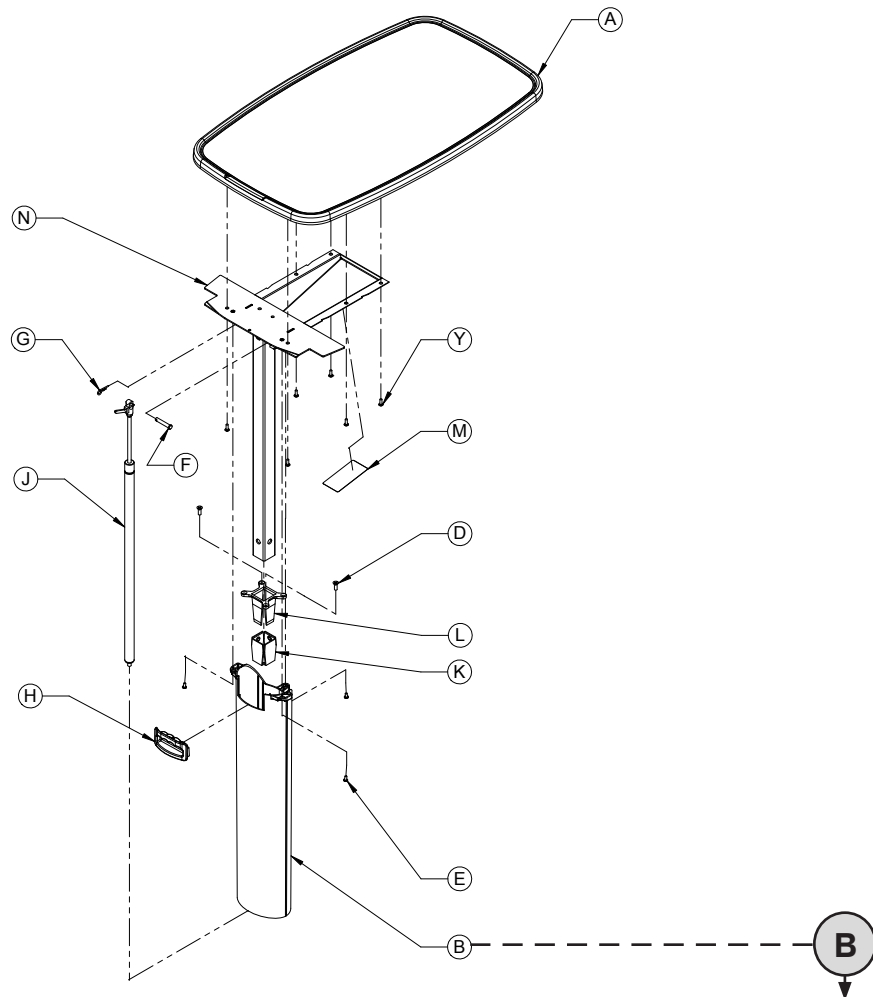
- None

Procedure:

1. Open the side of the vanity tray with the broken mirror and flip up the mirror.
2. While holding the top of the broken mirror with one hand, use your other hand to flex the bottom of the mirror in the middle and remove it from the vanity.
3. Reverse procedures to install the new mirror.

Single-top Overbed Table Assembly, Without Vanity

For Reference Only: Part Number 3150-000-100

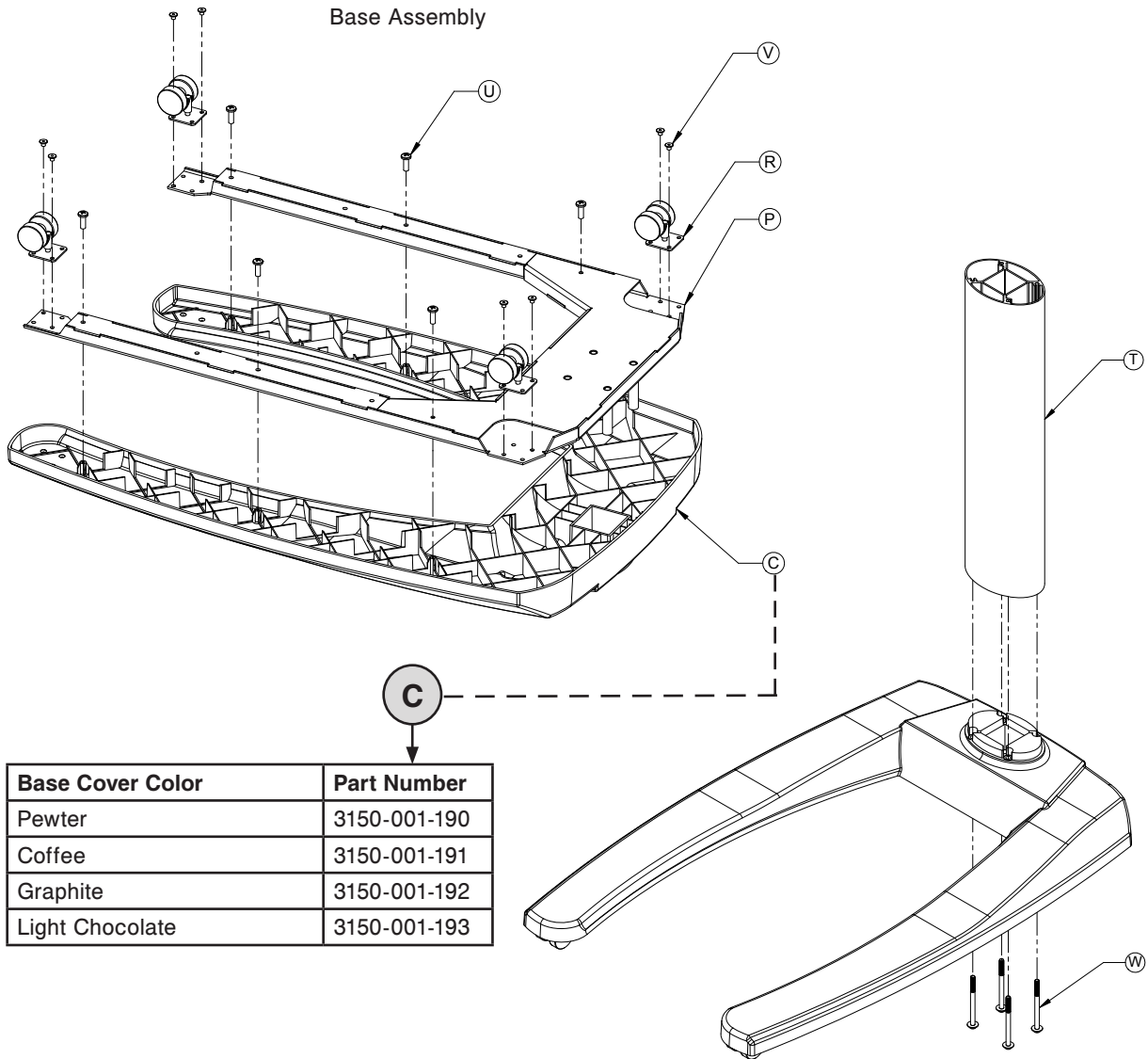


Upper Column Cover Color	Part Number
Pewter	3150-002-290
Coffee	3150-002-291
Graphite	3150-002-292
Light Chocolate	3150-002-293

Item	Part No.	Part Name	Qty.
A	(see page 21)	Single-top, Without Vanity	1
B	(see table above)	Upper Column Cover	1
D	0001-163-000	Flat Countersunk Head Screw	2
E	0004-136-000	Pan Head Machine Screw	3
F	0026-296-000	Gas Spring Clevis	1
G	0027-019-000	Rue Clip	1
H	3150-002-205	Lift Handle	1
J	3150-002-310	Gas Spring Assembly (see page 43)	1
K	3150-002-405	Lower Bushing	1
L	3150-002-410	Upper Bushing	1
M	3150-009-100	Label	1
N	3150-010-115	Top Support Weldment	1
Y	0023-256-000	Phillips Pan Head Screw	6

Single-top Overbed Table Assembly, Without Vanity

For Reference Only: Part Number 3150-000-100



Item	Part No.	Part Name	Qty.
C	(see table above)	Base Cover	1
P	3150-001-105	Base Weldment	1
R	3150-001-200	Caster	4
T	3150-002-100	Lower Column	1
U	0023-116-000	Phillips Pan Head Screw	6
V	0025-122-000	Rivet	8
W	3150-001-223	Torx Flat Head Screw	4

[Return To Table of Contents](#)

Single-top Overbed Table Assembly, Without Vanity

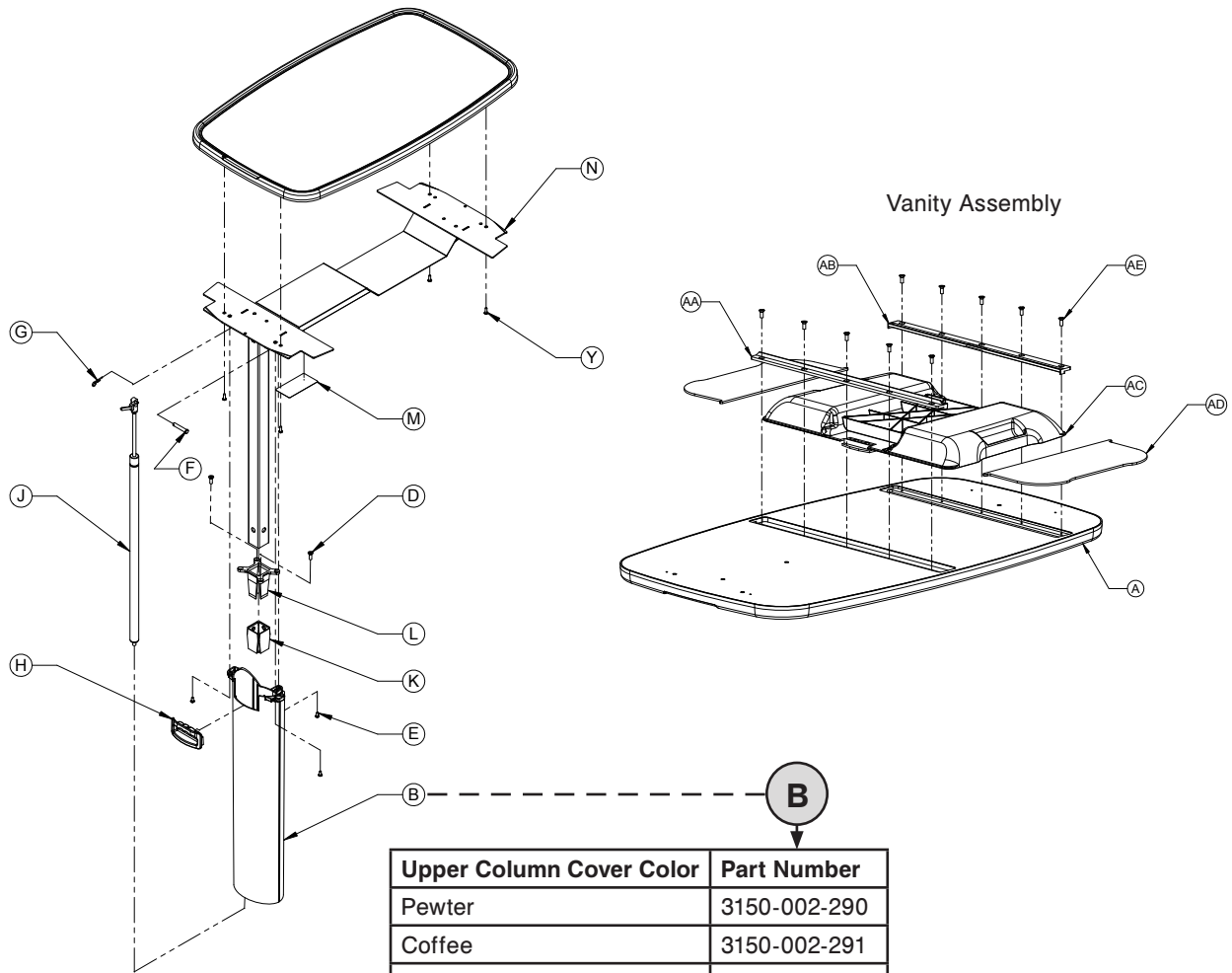
Single-top Laminate / Edge Mold Options



Laminate Color	Edge Mold Color	Top Part Number
Hard Rock Maple	Pewter	3150-092-441
Fine Oak	Pewter	3150-092-442
Port Maple	Pewter	3150-092-443
Wild Cherry	Pewter	3150-092-446
Cayenne Maple	Pewter	3150-092-447
Honey Maple	Pewter	3150-092-448
Select Cherry	Pewter	3150-092-449
Hard Rock Maple	Coffee	3150-090-441
Fine Oak	Coffee	3150-090-442
Port Maple	Coffee	3150-090-443
Wild Cherry	Coffee	3150-090-446
Cayenne Maple	Coffee	3150-090-447
Honey Maple	Coffee	3150-090-448
Select Cherry	Coffee	3150-090-449
Hard Rock Maple	Graphite	3150-091-441
Fine Oak	Graphite	3150-091-442
Port Maple	Graphite	3150-091-443
Wild Cherry	Graphite	3150-091-446
Cayenne Maple	Graphite	3150-091-447
Honey Maple	Graphite	3150-091-448
Select Cherry	Graphite	3150-091-449
Hard Rock Maple	Light Chocolate	3150-089-441
Fine Oak	Light Chocolate	3150-089-442
Port Maple	Light Chocolate	3150-089-443
Wild Cherry	Light Chocolate	3150-089-446
Cayenne Maple	Light Chocolate	3150-089-447
Honey Maple	Light Chocolate	3150-089-448
Select Cherry	Light Chocolate	3150-089-449
Tops Prior to 2/1/2005 (Available as Service Parts Only)		
Hearth Oak	Pewter	3150-092-444
Royal Maple	Pewter	3150-092-445
Hearth Oak	Coffee	3150-090-444
Royal Maple	Coffee	3150-090-445
Hearth Oak	Graphite	3150-091-444
Royal Maple	Graphite	3150-091-445

Single-top Overbed Table Assembly, With Vanity

For Reference Only: Part Number 3150-000-200



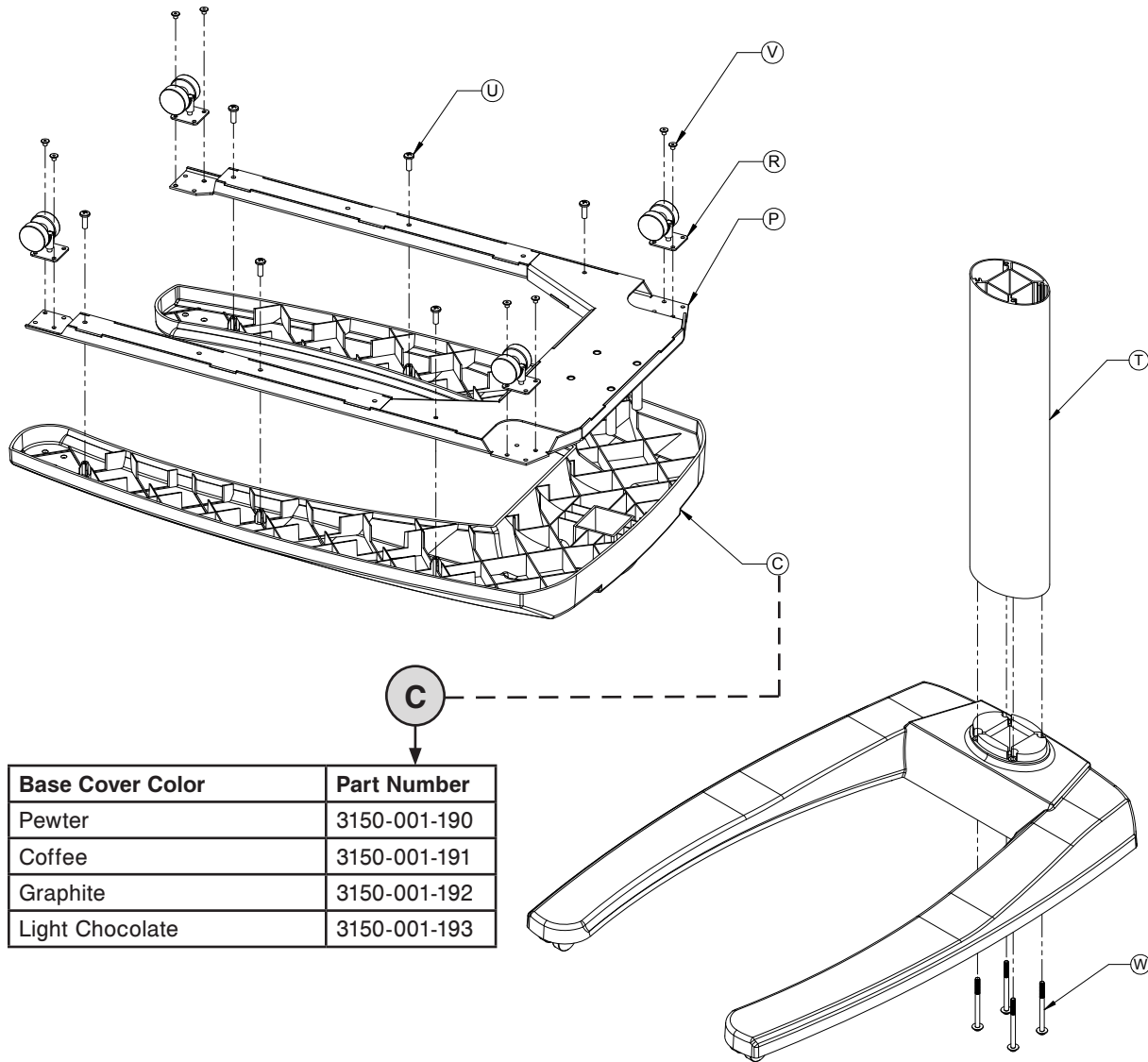
Upper Column Cover Color	Part Number
Pewter	3150-002-290
Coffee	3150-002-291
Graphite	3150-002-292
Light Chocolate	3150-002-293

Item	Part No.	Part Name	Qty.
A	(see page 24)	Single-top, With Vanity	1
B	(see table above)	Upper Column Cover	1
D	0001-163-000	Flat Countersunk Head Screw	2
E	0004-136-000	Pan Head Machine Screw	3
F	0026-296-000	Gas Spring Clevis	1
G	0027-019-000	Rue Clip	1
H	3150-002-205	Lift Handle	1
J	3150-002-320	Gas Spring Assembly (see page 43)	1
K	3150-002-405	Lower Bushing	1
L	3150-002-410	Upper Bushing	1
M	3150-009-100	Label	1
N	3150-010-105	Top Support Weldment	1
Y	0023-256-000	Phillips Pan Head Screw	4
AA	3150-010-221	Long Track	1
AB	3150-010-222	Short Track	1
AC	3150-010-500	Vanity Tray	1
AD	3150-010-510	Vanity Mirror	1
AE	0020-020-000	Phillips Head Wood Screw	10

[Return To Table of Contents](#)

Single-top Overbed Table Assembly, With Vanity

For Reference Only: Part Number 3150-000-200



Base Cover Color	Part Number
Pewter	3150-001-190
Coffee	3150-001-191
Graphite	3150-001-192
Light Chocolate	3150-001-193

Item	Part No.	Part Name	Qty.
C	(see table above)	Base Cover	1
P	3150-001-105	Base Weldment	1
R	3150-001-200	Caster	4
T	3150-002-100	Lower Column	1
U	0023-116-000	Phillips Pan Head Screw	6
V	0025-122-000	Rivet	8
W	3150-001-223	Torx Flat Head Screw	4

Single-top Overbed Table Assembly, With Vanity

Single-top Laminate / Edge Mold Options

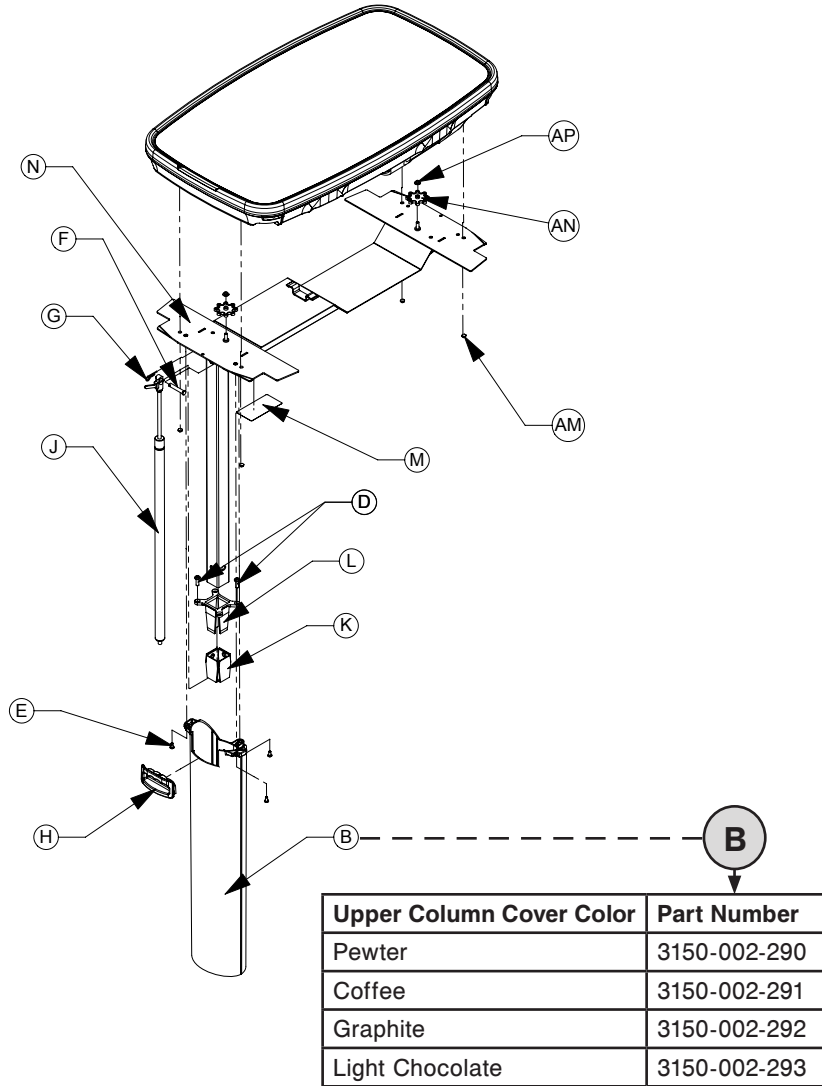


Laminate Color	Edge Mold Color	Primary Top Part Number
Hard Rock Maple	Pewter	3150-096-441
Fine Oak	Pewter	3150-096-442
Port Maple	Pewter	3150-096-443
Wild Cherry	Pewter	3150-096-446
Cayenne Maple	Pewter	3150-096-447
Honey Maple	Pewter	3150-096-448
Select Cherry	Pewter	3150-096-449
Hard Rock Maple	Coffee	3150-097-441
Fine Oak	Coffee	3150-097-442
Port Maple	Coffee	3150-097-443
Wild Cherry	Coffee	3150-097-446
Cayenne Maple	Coffee	3150-097-447
Honey Maple	Coffee	3150-097-448
Select Cherry	Coffee	3150-097-449
Hard Rock Maple	Graphite	3150-098-441
Fine Oak	Graphite	3150-098-442
Port Maple	Graphite	3150-098-443
Wild Cherry	Graphite	3150-098-446
Cayenne Maple	Graphite	3150-098-447
Honey Maple	Graphite	3150-098-448
Select Cherry	Graphite	3150-098-449
Hard Rock Maple	Light Chocolate	3150-088-441
Fine Oak	Light Chocolate	3150-088-442
Port Maple	Light Chocolate	3150-088-443
Wild Cherry	Light Chocolate	3150-088-446
Cayenne Maple	Light Chocolate	3150-088-447
Honey Maple	Light Chocolate	3150-088-448
Select Cherry	Light Chocolate	3150-088-449
Tops Prior to 2/1/2005 (Available as Service Parts Only)		
Hearth Oak	Pewter	3150-096-444
Royal Maple	Pewter	3150-096-445
Hearth Oak	Coffee	3150-097-444
Royal Maple	Coffee	3150-097-445
Hearth Oak	Graphite	3150-098-444
Royal Maple	Graphite	3150-098-445

[Return To Table of Contents](#)

Split-top Overbed Table Assembly, Without Storage

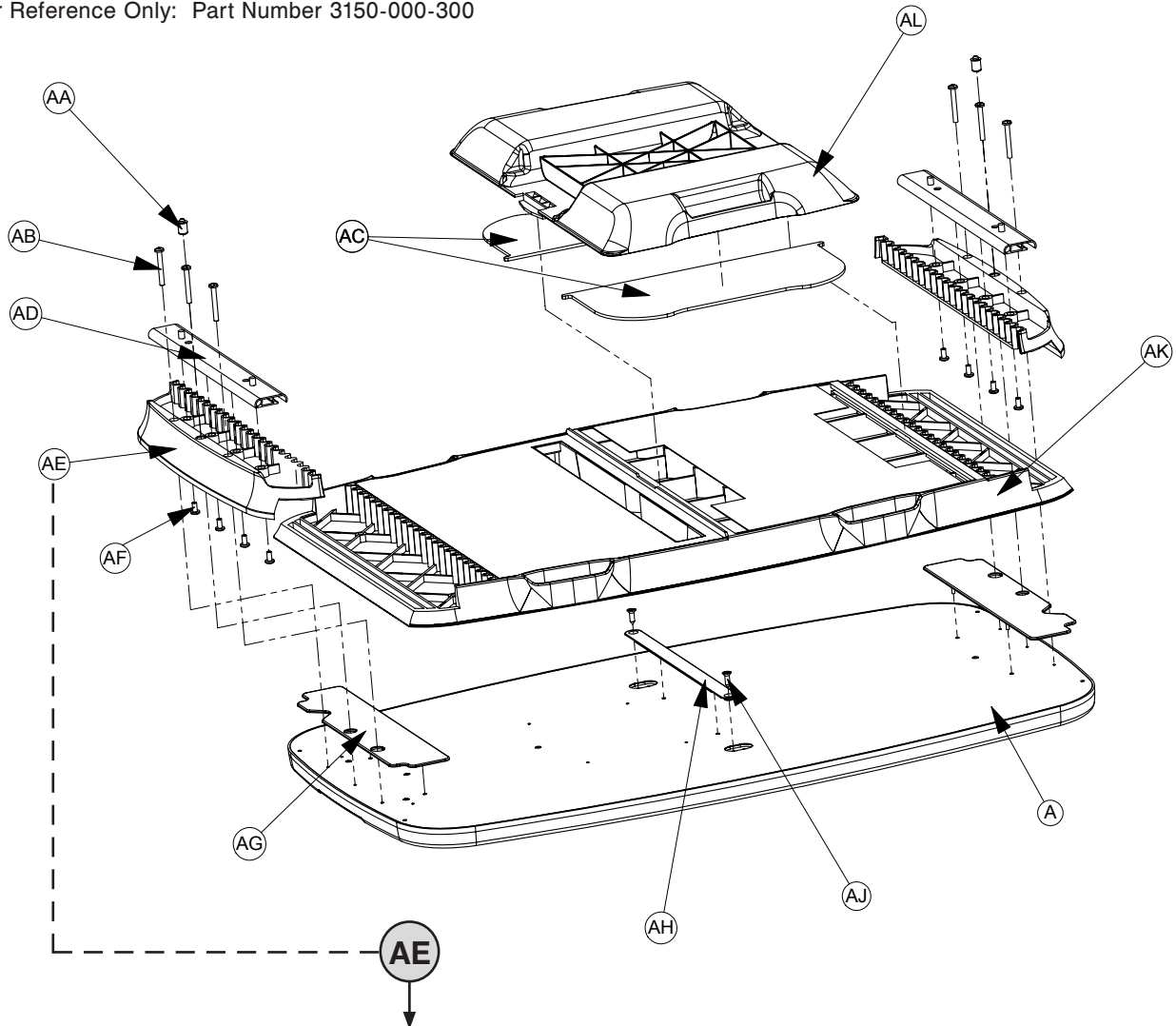
For Reference Only: Part Number 3150-000-300



Item	Part No.	Part Name	Qty.
B	(see table above)	Upper Column Cover	1
D	0001-163-000	Flat Countersunk Head Screw	2
E	0004-136-000	Pan Head Machine Screw	3
F	0026-296-000	Gas Spring Clevis	1
G	0027-019-000	Rue Clip	1
H	3150-002-205	Lift Handle	1
J	3150-002-330	Gas Spring Assembly (see page 43)	1
K	3150-002-405	Lower Bushing	1
L	3150-002-410	Upper Bushing	1
M	3150-009-100	Label	1
N	3150-010-110	Top Support Weldment	1
AM	0017-002-000	Cap Nut	4
AN	3100-100-079	Gear	2
AP	0016-128-000	Pushnut	2

Split-top Overbed Table Assembly, Without Storage

For Reference Only: Part Number 3150-000-300



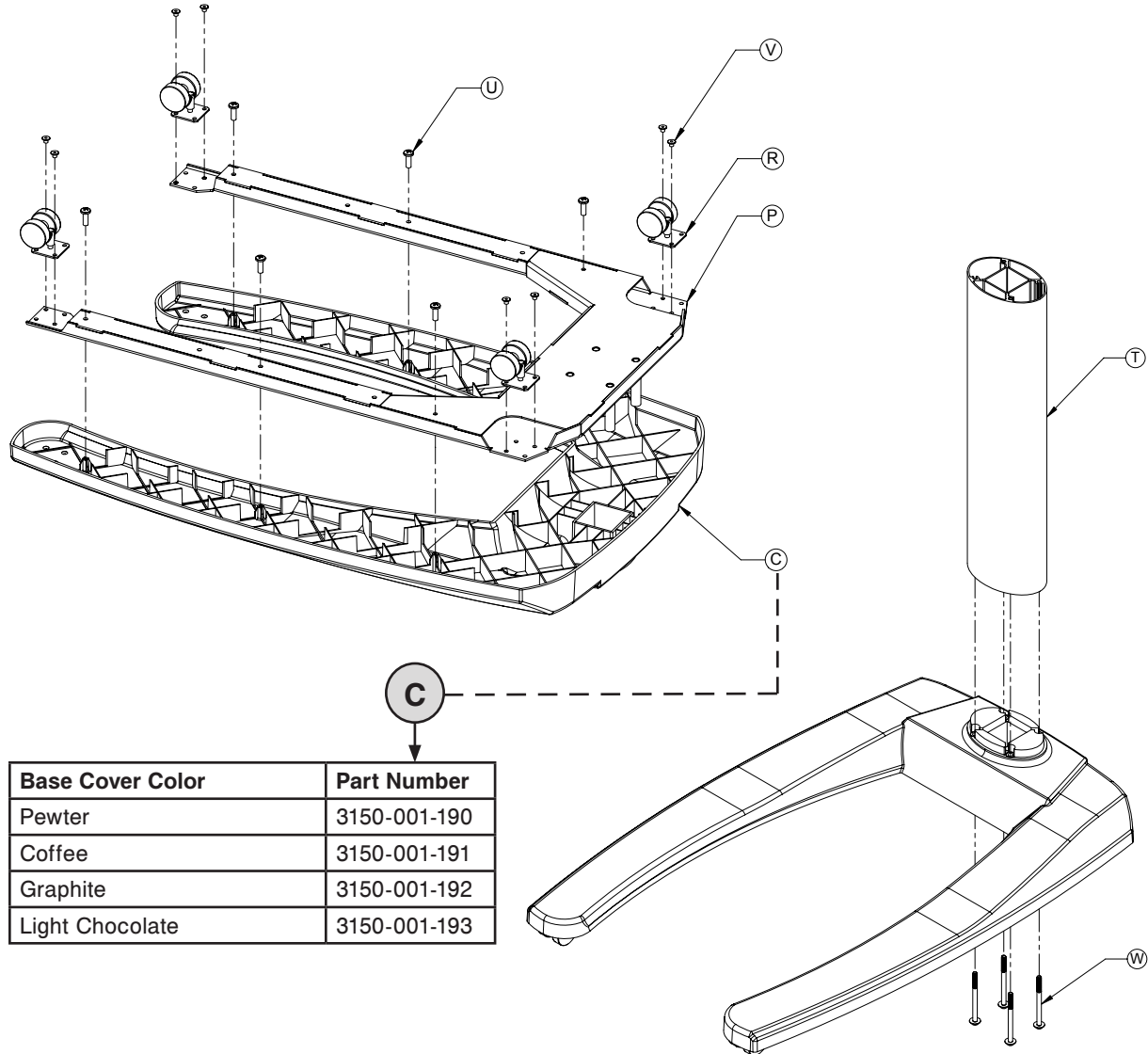
Gear Rack Color	Part Number
Pewter	3150-010-494
Coffee	3150-010-495
Graphite	3150-010-496
Light Chocolate	3150-010-497

Item	Part No.	Part Name	Qty.
A	(see page 28)	Primary Split-top Assembly	1
AA	3150-010-412	Bullet Catch	2
AB	0050-065-000	Phillips Pan Head Screw	6
AC	3150-010-510	Vanity Mirror	2
AD	3150-010-410	Slide	2
AE	(see table above)	Gear Rack	2
AF	0004-136-000	Pan Head Machine Screw	8
AG	3150-010-421	Overbed Table End Slide	2
AH	3150-010-422	Overbed Table Mid Slide	1
AJ	0020-020-000	Phillips Head Wood Screw	2
AK	(see page 28)	Secondary Split-top Assembly	1
AL	3150-010-500	Vanity Tray	1

[Return To Table of Contents](#)

Split-top Overbed Table Assembly, Without Storage

For Reference Only: Part Number 3150-000-300



Base Cover Color	Part Number
Pewter	3150-001-190
Coffee	3150-001-191
Graphite	3150-001-192
Light Chocolate	3150-001-193

Item	Part No.	Part Name	Qty.
C	(see table above)	Base Cover	1
P	3150-001-105	Base Weldment	1
R	3150-001-200	Caster	4
T	3150-002-100	Lower Column	1
U	0023-116-000	Phillips Pan Head Screw	6
V	0025-122-000	Rivet	8
W	3150-001-223	Torx Flat Head Screw	4

Split-top Overbed Table Assembly, Without Storage

Split-top Laminate / Edge Mold Color Options

A

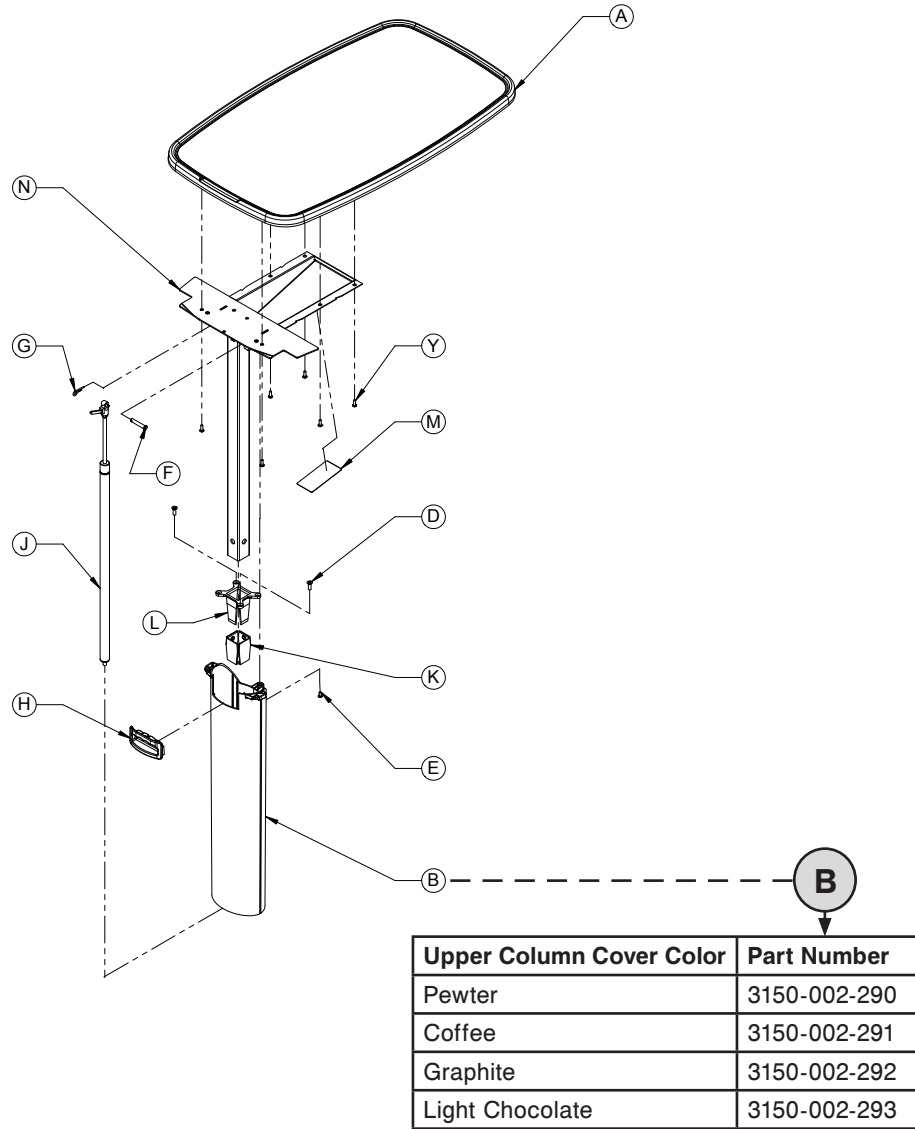
AK

Laminate Color	Edge Mold Color	Primary Top Part Number	Secondary Top Part Number
Hard Rock Maple	Pewter	3150-092-441	3150-094-441
Fine Oak	Pewter	3150-092-442	3150-094-442
Port Maple	Pewter	3150-092-443	3150-094-443
Wild Cherry	Pewter	3150-092-446	3150-094-446
Cayenne Maple	Pewter	3150-092-447	3150-094-447
Honey Maple	Pewter	3150-092-448	3150-094-448
Select Cherry	Pewter	3150-092-449	3150-094-449
Hard Rock Maple	Coffee	3150-090-441	3150-093-441
Fine Oak	Coffee	3150-090-442	3150-093-442
Port Maple	Coffee	3150-090-443	3150-093-443
Wild Cherry	Coffee	3150-090-446	3150-093-446
Cayenne Maple	Coffee	3150-090-447	3150-093-447
Honey Maple	Coffee	3150-090-448	3150-093-448
Select Cherry	Coffee	3150-090-449	3150-093-449
Hard Rock Maple	Graphite	3150-091-441	3150-095-441
Fine Oak	Graphite	3150-091-442	3150-095-442
Port Maple	Graphite	3150-091-443	3150-095-443
Wild Cherry	Graphite	3150-091-446	3150-095-446
Cayenne Maple	Graphite	3150-091-447	3150-095-447
Honey Maple	Graphite	3150-091-448	3150-095-448
Select Cherry	Graphite	3150-091-449	3150-095-449
Hard Rock Maple	Light Chocolate	3150-089-441	3150-087-441
Fine Oak	Light Chocolate	3150-089-442	3150-087-442
Port Maple	Light Chocolate	3150-089-443	3150-087-443
Wild Cherry	Light Chocolate	3150-089-446	3150-087-446
Cayenne Maple	Light Chocolate	3150-089-447	3150-087-447
Honey Maple	Light Chocolate	3150-089-448	3150-087-448
Select Cherry	Light Chocolate	3150-089-449	3150-087-449
Tops Prior to 2/1/2005 (Available as Service Parts Only)			
Hearth Oak	Pewter	3150-092-444	3150-094-444
Royal Maple	Pewter	3150-092-445	3150-094-445
Hearth Oak	Coffee	3150-090-444	3150-093-444
Royal Maple	Coffee	3150-090-445	3150-093-445
Hearth Oak	Graphite	3150-091-444	3150-095-444
Royal Maple	Graphite	3150-091-445	3150-095-445

[Return To Table of Contents](#)

Single-top Overbed Table Assembly, With Storage

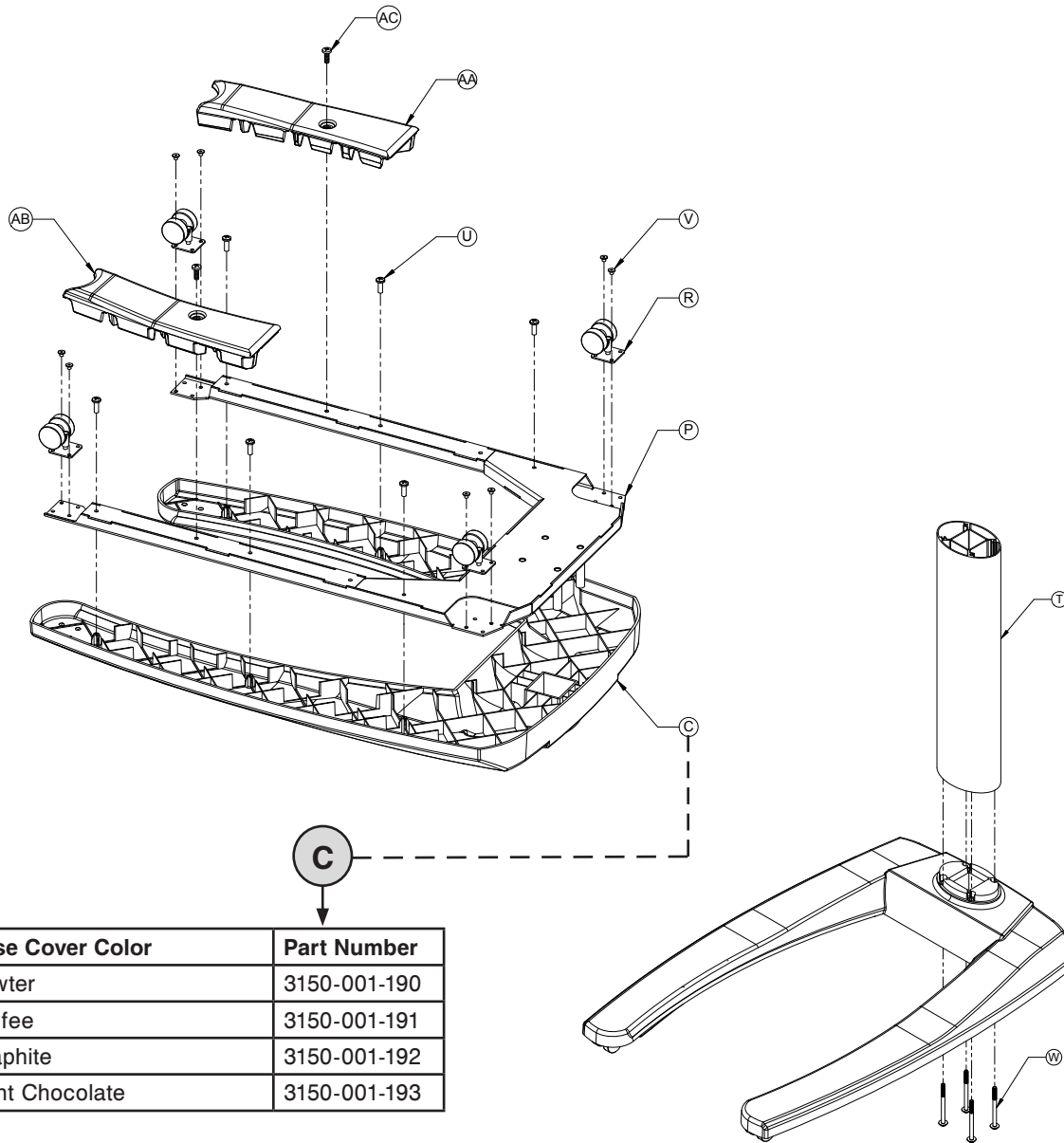
For Reference Only: Part Number 3150-000-400



Item	Part No.	Part Name	Qty.
A	(see page 32)	Single-top Assembly	1
B	(see table above)	Upper Column Cover	1
D	0001-163-000	Flat Countersunk Head Screw	2
E	0004-136-000	Pan Head Machine Screw	1
F	0026-296-000	Gas Spring Clevis	1
G	0027-019-000	Rue Clip	1
H	3150-002-205	Lift Handle	1
J	3151-002-101	Gas Spring Assembly (see page 43)	1
K	3150-002-405	Lower Bushing	1
L	3150-002-410	Upper Bushing	1
M	3150-009-100	Label	1
N	3150-010-115	Top Support Weldment	1
Y	0023-256-000	Phillips Pan Head Screw	6

Single-top Overbed Table Assembly, With Storage

For Reference Only: Part Number 3150-000-400



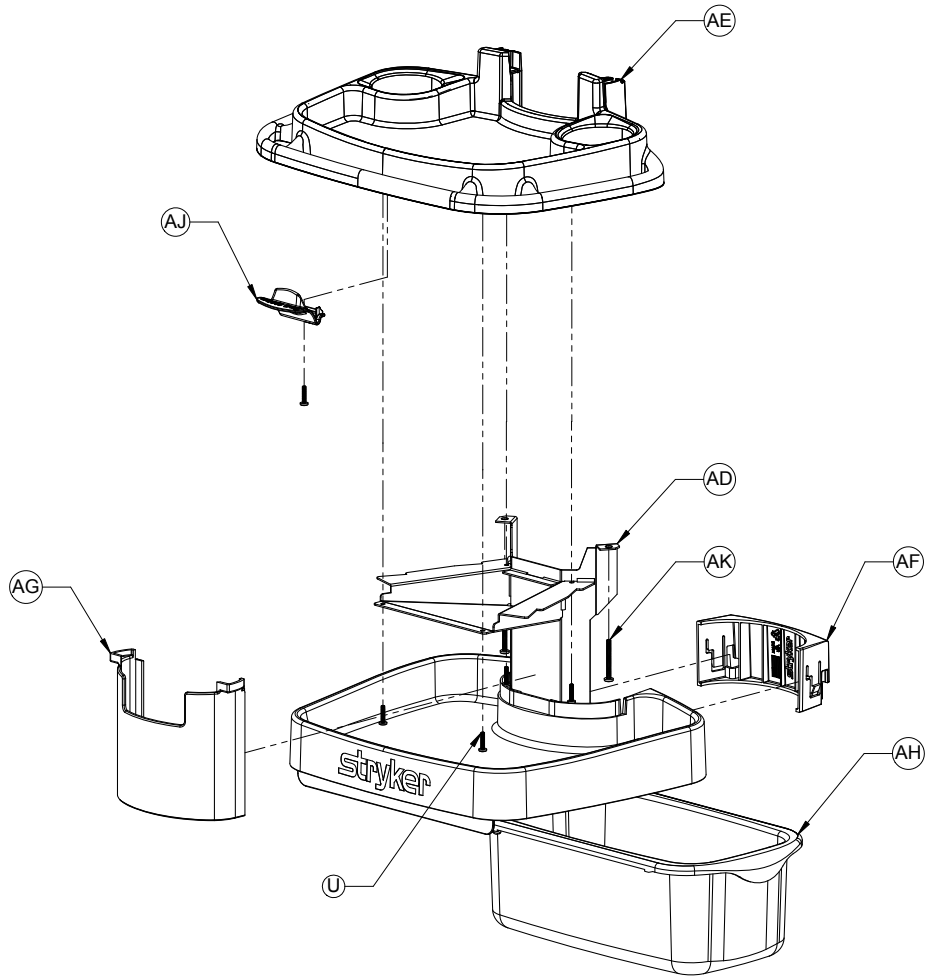
Base Cover Color	Part Number
Pewter	3150-001-190
Coffee	3150-001-191
Graphite	3150-001-192
Light Chocolate	3150-001-193

Item	Part No.	Part Name	Qty.
C	(see table above)	Base Cover	1
P	3150-001-105	Base Weldment	1
R	3150-001-200	Caster	4
T	3150-002-100	Lower Column	1
U	0023-116-000	Phillips Pan Head Screw	6
V	0025-122-000	Rivet	8
W	3150-001-223	Torx Flat Head Screw	4
AA	3151-050-807	Left Leg Ballast	1
AB	3151-050-809	Right Leg Ballast	1
AC	0007-065-000	Truss Head Screw	

[Return To Table of Contents](#)

Single-top Overbed Table Assembly, With Storage

For Reference Only: Part Number 3150-000-400



Item	Part No.	Part Name	Qty.
U	0023-116-000	Phillips Pan Head Screw	5
AD	(see table below)	Frame Assembly	1
AE	(see table below)	Top Shelf	1
AF	(see table below)	Upper Column Clamp	1
AG	(see table below)	Upper Column Cover	1
AH	3151-050-600	Storage Bin	1
AJ	(see table below)	Bag Clip	1
AK	0004-633-000	Button Head Cap Screw	2

Item	Description	Pewter	Coffee	Graphite	Light Chocolate
(AD)	Frame Assembly	3151-050-390	3151-050-391	3151-050-392	3151-050-393
(AE)	Top Shelf	3151-050-190	3151-050-191	3151-050-192	3151-050-193
(AF)	Upper Column Clamp	3151-050-490	3151-050-491	3151-050-492	3151-050-493
(AG)	Upper Column Cover	3151-050-790	3151-050-791	3151-050-792	3151-050-793
(AJ)	Bag Clip	3151-050-590	3151-050-591	3151-050-592	3151-050-593

[Return To Table of Contents](#)

Single-top Overbed Table Assembly, With Storage

Single-top Laminate / Edge Mold Options

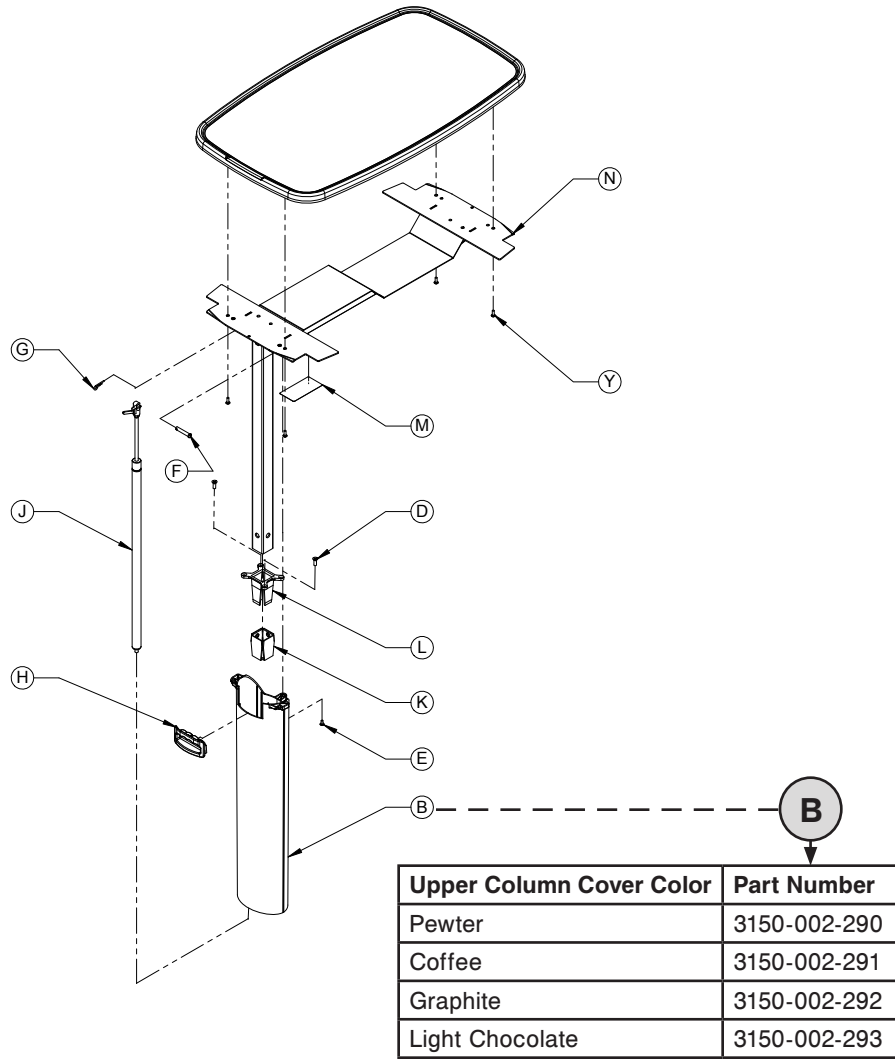


Laminate Color	Edge Mold Color	Top Part Number
Hard Rock Maple	Pewter	3150-092-441
Fine Oak	Pewter	3150-092-442
Port Maple	Pewter	3150-092-443
Wild Cherry	Pewter	3150-092-446
Cayenne Maple	Pewter	3150-092-447
Honey Maple	Pewter	3150-092-448
Select Cherry	Pewter	3150-092-449
Hard Rock Maple	Coffee	3150-090-441
Fine Oak	Coffee	3150-090-442
Port Maple	Coffee	3150-090-443
Wild Cherry	Coffee	3150-090-446
Cayenne Maple	Coffee	3150-090-447
Honey Maple	Coffee	3150-090-448
Select Cherry	Coffee	3150-090-449
Hard Rock Maple	Graphite	3150-091-441
Fine Oak	Graphite	3150-091-442
Port Maple	Graphite	3150-091-443
Wild Cherry	Graphite	3150-091-446
Cayenne Maple	Graphite	3150-091-447
Honey Maple	Graphite	3150-091-448
Select Cherry	Graphite	3150-091-449
Hard Rock Maple	Light Chocolate	3150-089-441
Fine Oak	Light Chocolate	3150-089-442
Port Maple	Light Chocolate	3150-089-443
Wild Cherry	Light Chocolate	3150-089-446
Cayenne Maple	Light Chocolate	3150-089-447
Honey Maple	Light Chocolate	3150-089-448
Select Cherry	Light Chocolate	3150-089-449
Tops Prior to 2/1/2005 (Available as Service Parts Only)		
Hearth Oak	Pewter	3150-092-444
Royal Maple	Pewter	3150-092-445
Hearth Oak	Coffee	3150-090-444
Royal Maple	Coffee	3150-090-445
Hearth Oak	Graphite	3150-091-444
Royal Maple	Graphite	3150-091-445

[Return To Table of Contents](#)

Single-top Overbed Table Assembly, With Vanity, With Storage

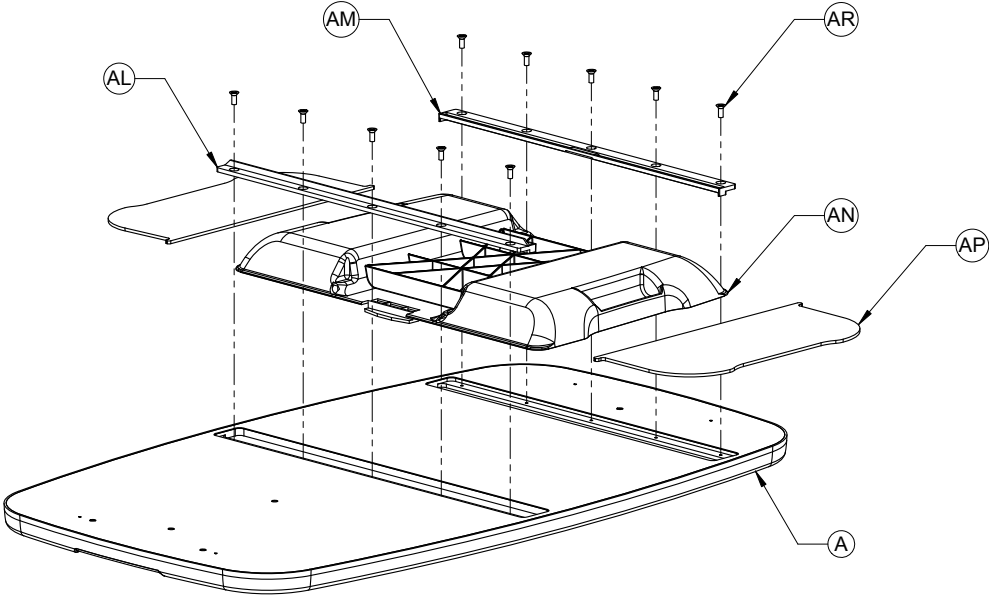
For Reference Only: Part Number 3150-000-500



Item	Part No.	Part Name	Qty.
B	(see table above)	Upper Column Cover	1
D	0001-163-000	Flat Countersunk Head Screw	2
E	0004-136-000	Pan Head Machine Screw	1
F	0026-296-000	Gas Spring Clevis	1
G	0027-019-000	Rue Clip	1
H	3150-002-205	Lift Handle	1
J	3151-002-102	Gas Spring Assembly (see page 43)	1
K	3150-002-405	Lower Bushing	1
L	3150-002-410	Upper Bushing	1
M	3150-009-100	Label	1
N	3150-010-105	Top Support Weldment	1
Y	0023-256-000	Phillips Pan Head Screw	4

Single-top Overbed Table Assembly, With Vanity, With Storage

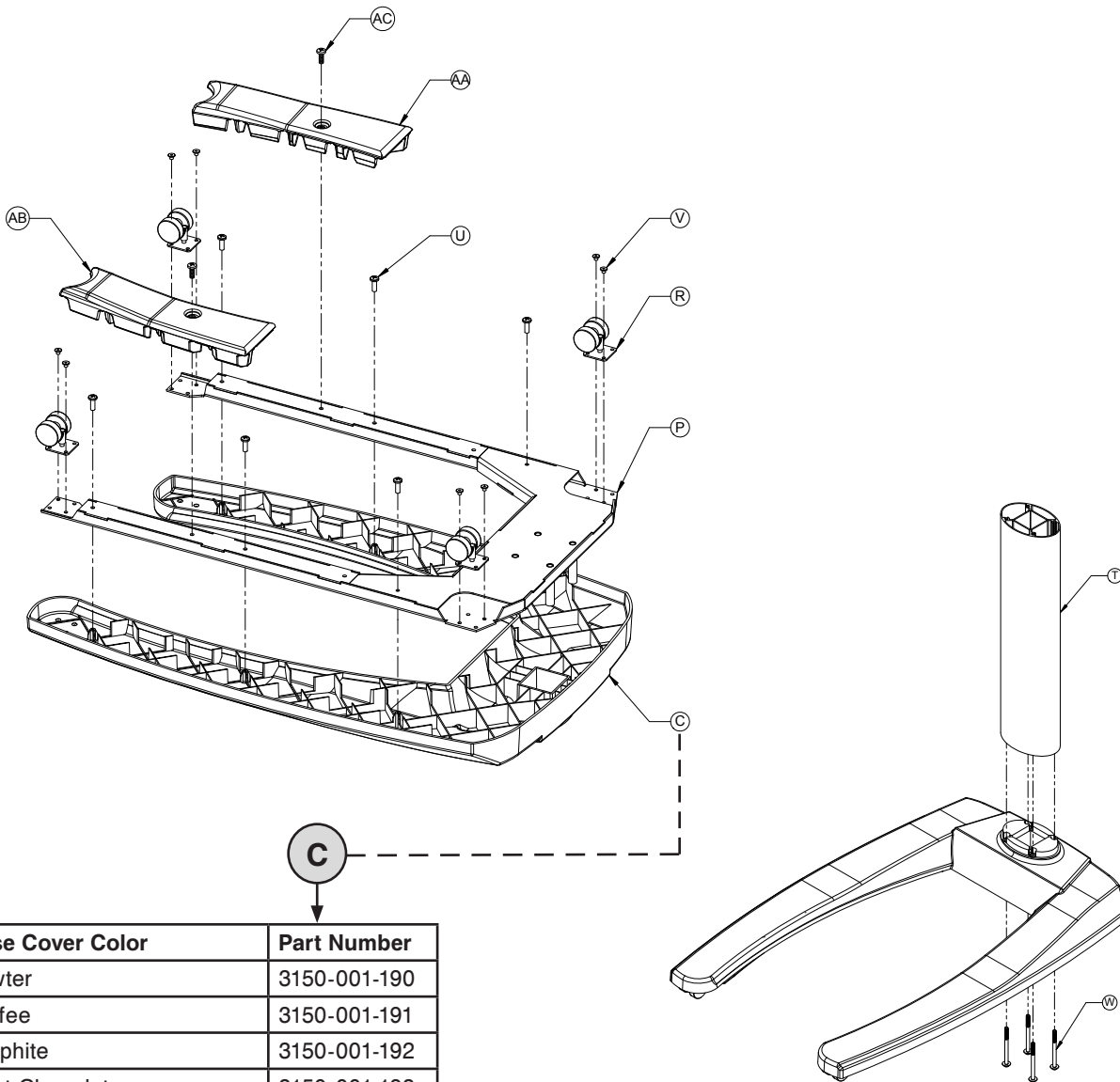
For Reference Only: Part Number 3150-000-500



Item	Part No.	Part Name	Qty.
A	(see page 37)	Primary Split-top Assembly	1
AL	3150-010-221	Long Track	1
AM	3150-010-222	Short Track	1
AN	3150-010-500	Vanity Tray	1
AP	3150-010-510	Vanity Mirror	2
AR	0020-020-000	Phillips Head Wood Screw	10

Single-top Overbed Table Assembly, With Vanity, With Storage

For Reference Only: Part Number 3150-000-500

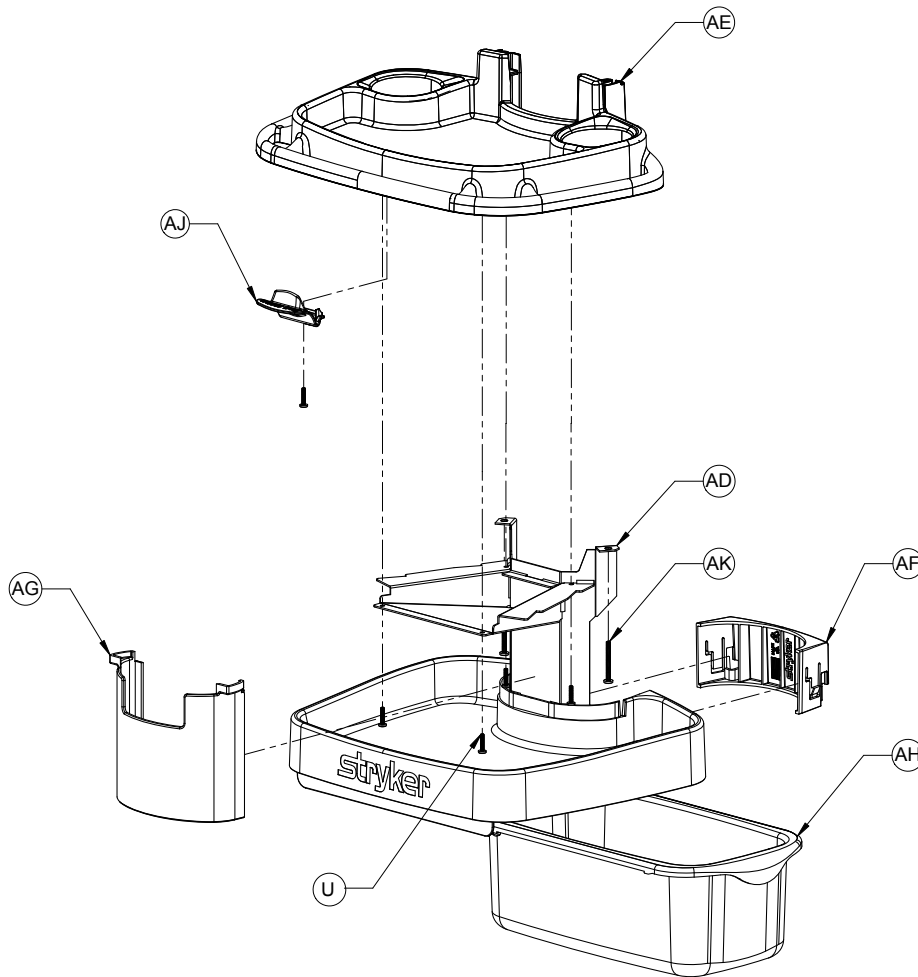


Base Cover Color	Part Number
Pewter	3150-001-190
Coffee	3150-001-191
Graphite	3150-001-192
Light Chocolate	3150-001-193

Item	Part No.	Part Name	Qty.
C	(see table above)	Base Cover	1
P	3150-001-105	Base Weldment	1
R	3150-001-200	Caster	4
T	3150-002-100	Lower Column	1
U	0023-116-000	Phillips Pan Head Screw	6
V	0025-122-000	Rivet	8
W	3150-001-223	Torx Flat Head Screw	4
AA	3151-050-807	Left Leg Ballast	1
AB	3151-050-809	Right Leg Ballast	1
AC	0007-065-000	Truss Head Screw	2

Single-top Overbed Table Assembly, With Vanity, With Storage

For Reference Only: Part Number 3150-000-500



Item	Part No.	Part Name	Qty.
U	0023-116-000	Phillips Pan Head Screw	5
AD	(see table below)	Frame Assembly	1
AE	(see table below)	Top Shelf	1
AF	(see table below)	Upper Column Clamp	1
AG	(see table below)	Upper Column Cover	1
AH	3151-050-600	Storage Bin	1
AJ	(see table below)	Bag Clip	1
AK	0004-633-000	Button Head Cap Screw	2

Item	Description	Pewter	Coffee	Graphite	Light Chocolate
(AD)	Frame Assembly	3151-050-390	3151-050-391	3151-050-392	3151-050-393
(AE)	Top Shelf	3151-050-190	3151-050-191	3151-050-192	3151-050-193
(AF)	Upper Column Clamp	3151-050-490	3151-050-491	3151-050-492	3151-050-493
(AG)	Upper Column Cover	3151-050-790	3151-050-791	3151-050-792	3151-050-793
(AJ)	Bag Clip	3151-050-590	3151-050-591	3151-050-592	3151-050-593

[Return To Table of Contents](#)

Single-top Overbed Table Assembly, With Vanity, With Storage

Single-top Laminate / Edge Mold Options

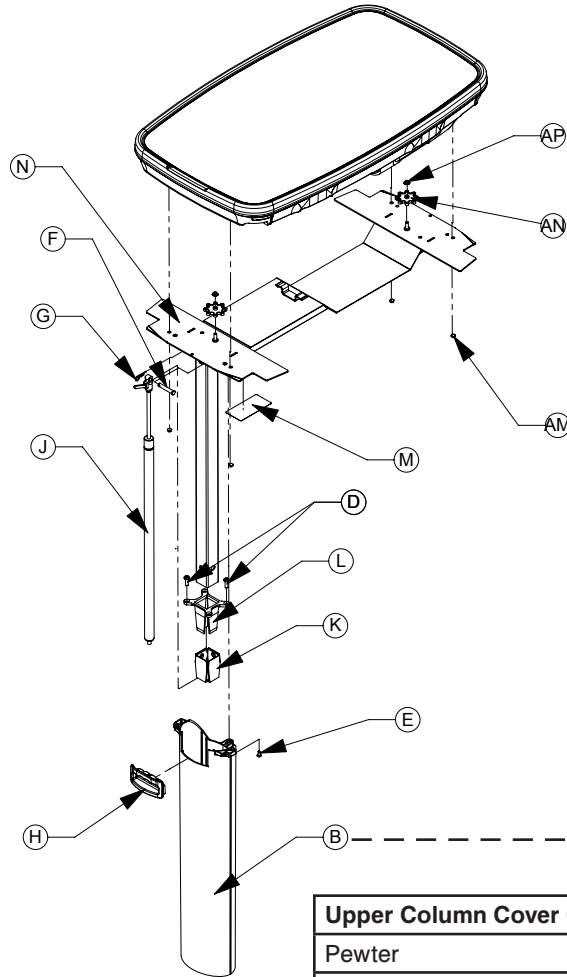


Laminate Color	Edge Mold Color	Top Part Number
Hard Rock Maple	Pewter	3150-096-441
Fine Oak	Pewter	3150-096-442
Port Maple	Pewter	3150-096-443
Wild Cherry	Pewter	3150-096-446
Cayenne Maple	Pewter	3150-096-447
Honey Maple	Pewter	3150-096-448
Select Cherry	Pewter	3150-096-449
Hard Rock Maple	Coffee	3150-097-441
Fine Oak	Coffee	3150-097-442
Port Maple	Coffee	3150-097-443
Wild Cherry	Coffee	3150-097-446
Cayenne Maple	Coffee	3150-097-447
Honey Maple	Coffee	3150-097-448
Select Cherry	Coffee	3150-097-449
Hard Rock Maple	Graphite	3150-098-441
Fine Oak	Graphite	3150-098-442
Port Maple	Graphite	3150-098-443
Wild Cherry	Graphite	3150-098-446
Cayenne Maple	Graphite	3150-098-447
Honey Maple	Graphite	3150-098-448
Select Cherry	Graphite	3150-098-449
Hard Rock Maple	Light Chocolate	3150-088-441
Fine Oak	Light Chocolate	3150-088-442
Port Maple	Light Chocolate	3150-088-443
Wild Cherry	Light Chocolate	3150-088-446
Cayenne Maple	Light Chocolate	3150-088-447
Honey Maple	Light Chocolate	3150-088-448
Select Cherry	Light Chocolate	3150-088-449
Tops Prior to 2/1/2005 (Available as Service Parts Only)		
Hearth Oak	Pewter	3150-092-444
Royal Maple	Pewter	3150-092-445
Hearth Oak	Coffee	3150-090-444
Royal Maple	Coffee	3150-090-445
Hearth Oak	Graphite	3150-091-444
Royal Maple	Graphite	3150-091-445

[Return To Table of Contents](#)

Split-top Overbed Table Assembly, With Storage

For Reference Only: Part Number 3150-000-600



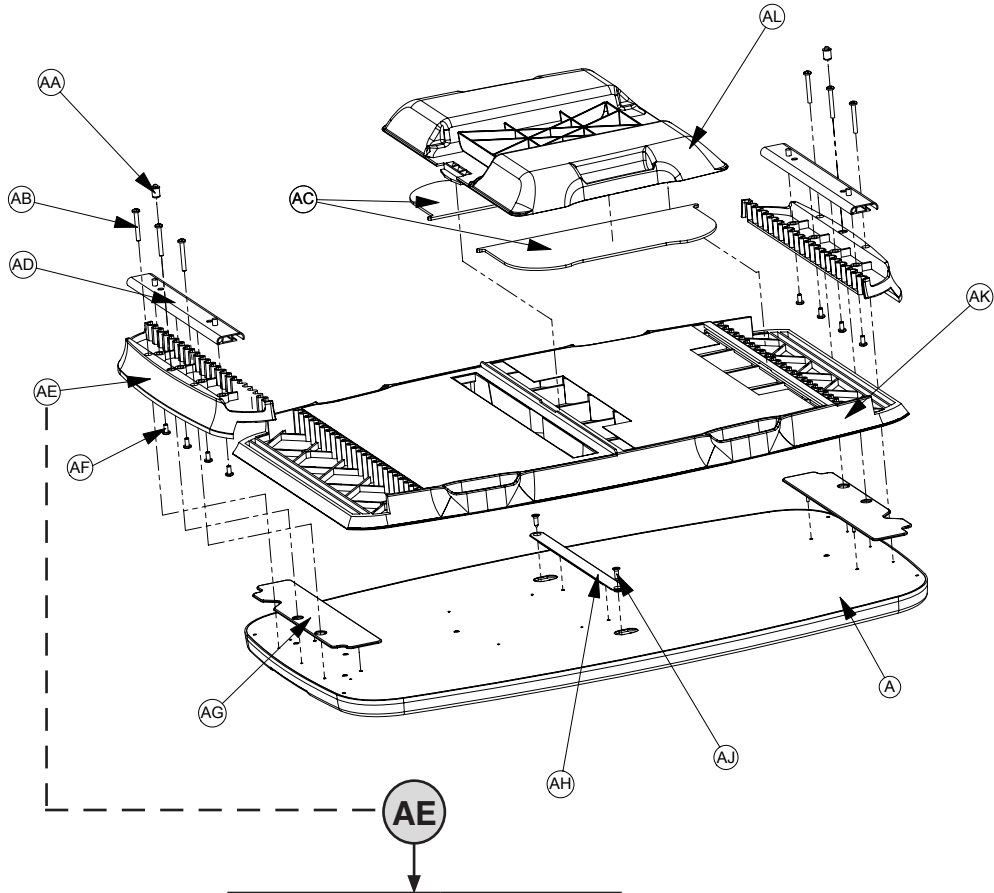
Upper Column Cover Color	Part Number
Pewter	3150-002-290
Coffee	3150-002-291
Graphite	3150-002-292
Light Chocolate	3150-002-293

Item	Part No.	Part Name	Qty.
B	(see table above)	Upper Column Cover	1
D	0001-163-000	Flat Countersunk Head Screw	2
E	0004-136-000	Pan Head Machine Screw	1
F	0026-296-000	Gas Spring Clevis	1
G	0027-019-000	Rue Clip	1
H	3150-002-205	Lift Handle	1
J	3151-002-103	Gas Spring Assembly (see page 43)	1
K	3150-002-405	Lower Bushing	1
L	3150-002-410	Upper Bushing	1
M	3150-009-100	Label	1
N	3150-010-110	Top Support Weldment	1
AM	0017-002-000	Cap Nut	4
AN	3100-100-079	Gear	2
AP	0016-128-000	Pushnut	2

[Return To Table of Contents](#)

Split-top Overbed Table Assembly, With Storage

For Reference Only: Part Number 3150-000-600

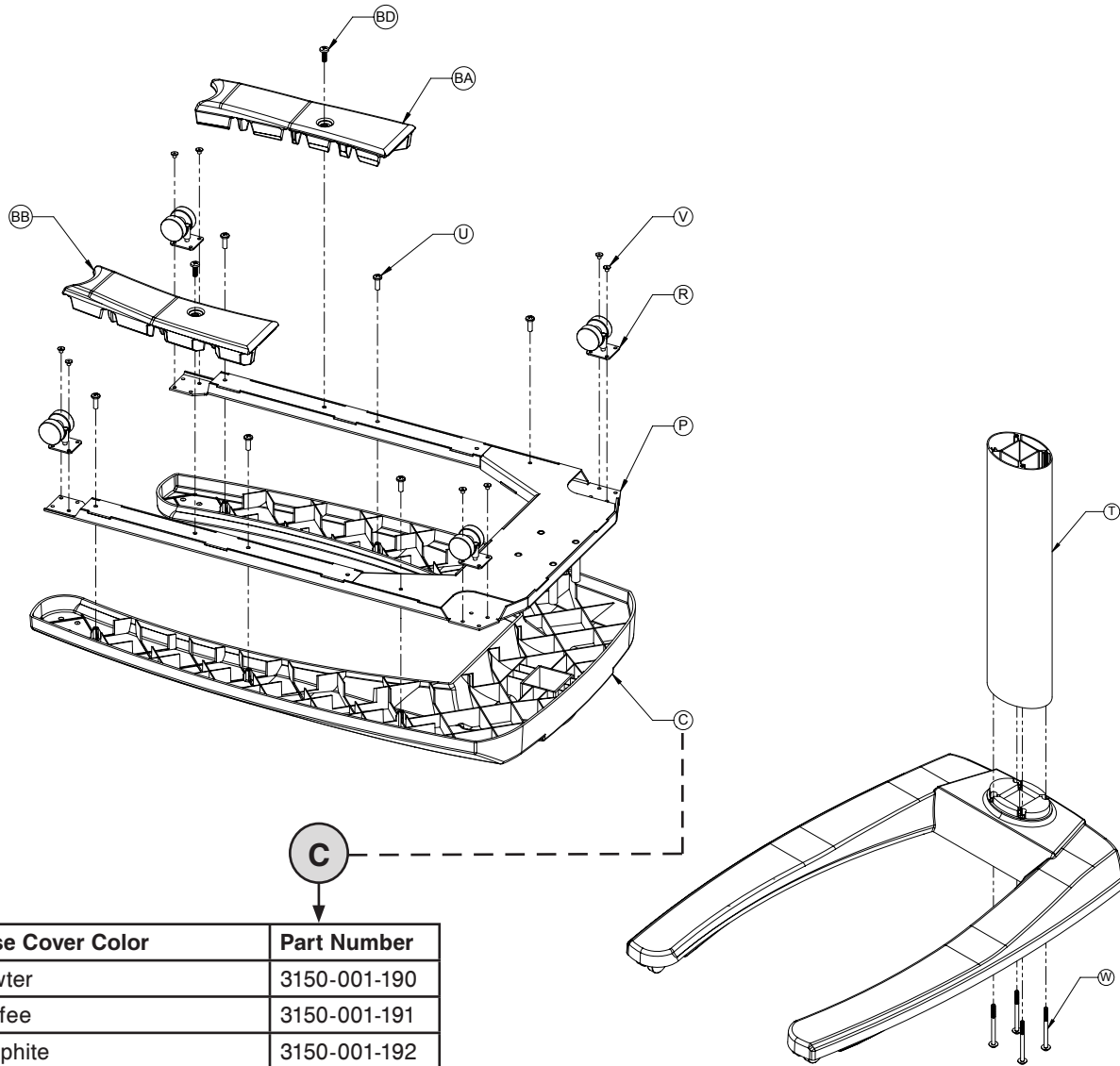


Gear Rack Color	Part Number
Pewter	3150-010-494
Coffee	3150-010-495
Graphite	3150-010-496
Light Chocolate	3150-010-497

Item	Part No.	Part Name	Qty.
A	(see page 42)	Primary Split-top Assembly	1
AA	3150-010-412	Bullet Catch	2
AB	0050-065-000	Phillips Pan Head Screw	6
AC	3150-010-510	Vanity Mirror	2
AD	3150-010-410	Slide	2
AE	(see table above)	Gear Rack	2
AF	0004-136-000	Pan Head Machine Screw	8
AG	3150-010-421	Overbed Table End Slide	2
AH	3150-010-422	Overbed Table Mid Slide	1
AJ	0020-020-000	Phillips Head Wood Screw	2
AK	(see page 42)	Secondary Split-top Assembly	1
AL	3150-010-500	Vanity Tray	1

Split-top Overbed Table Assembly, With Storage

For Reference Only: Part Number 3150-000-600



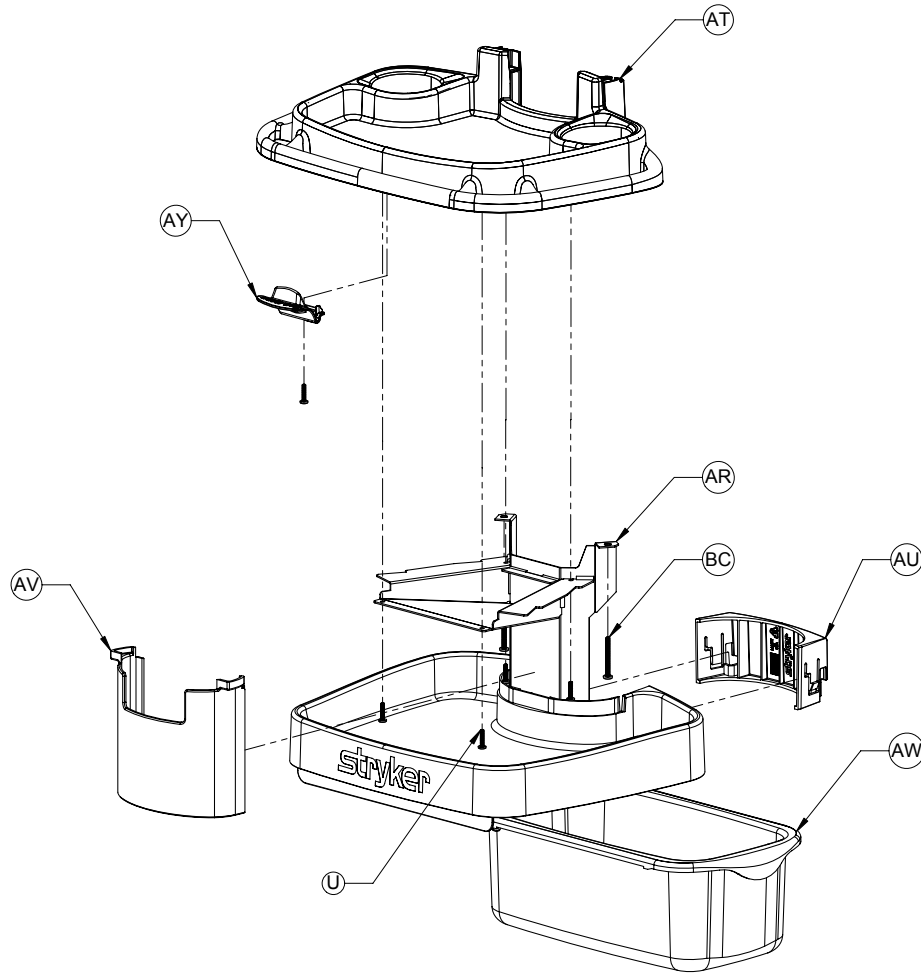
Base Cover Color	Part Number
Pewter	3150-001-190
Coffee	3150-001-191
Graphite	3150-001-192
Light Chocolate	3150-001-193

Item	Part No.	Part Name	Qty.
C	(see table above)	Base Cover	1
P	3150-001-105	Base Weldment	1
R	3150-001-200	Caster	4
T	3150-002-100	Lower Column	1
U	0023-116-000	Phillips Pan Head Screw	6
V	0025-122-000	Rivet	8
W	3150-001-223	Torx Flat Head Screw	4
BA	3151-050-807	Left Leg Ballast	1
BB	3151-050-809	Right Leg Ballast	1
BD	0007-065-000	Truss Head Torx Screw	2

[Return To Table of Contents](#)

Split-top Overbed Table Assembly, With Storage

For Reference Only: Part Number 3150-000-600



Item	Part No.	Part Name	Qty.
U	0023-116-000	Phillips Pan Head Screw	5
AR	(see table below)	Frame Assembly	1
AT	(see table below)	Top Shelf	1
AU	(see table below)	Upper Column Clamp	1
AV	(see table below)	Upper Column Cover	1
AW	3151-050-600	Storage Bin	1
AY	(see table below)	Bag Clip	1
BC	0004-633-000	Binder Head Machine Screw	2

Item	Description	Pewter	Coffee	Graphite	Light Chocolate
AR	Frame Assembly	3151-050-390	3151-050-391	3151-050-392	3151-050-393
AT	Top Shelf	3151-050-190	3151-050-191	3151-050-192	3151-050-193
AU	Upper Column Clamp	3151-050-490	3151-050-491	3151-050-492	3151-050-493
AV	Upper Column Cover	3151-050-790	3151-050-791	3151-050-792	3151-050-793
AY	Bag Clip	3151-050-590	3151-050-591	3151-050-592	3151-050-593

[Return To Table of Contents](#)

Split-top Overbed Table Assembly, With Storage

Split-top Laminate / Edge Mold Color Options

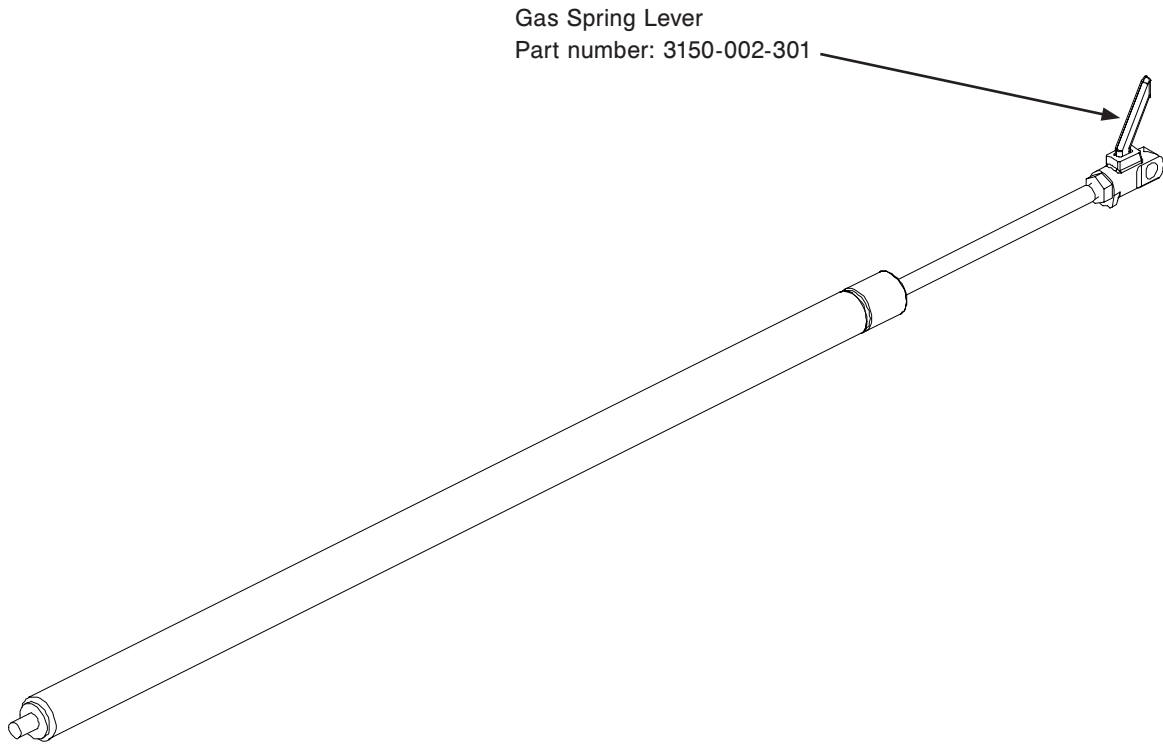
A

AK

Laminate Color	Edge Mold Color	Primary Top Part Number	Secondary Top Part Number
Hard Rock Maple	Pewter	3150-092-441	3150-094-441
Fine Oak	Pewter	3150-092-442	3150-094-442
Port Maple	Pewter	3150-092-443	3150-094-443
Wild Cherry	Pewter	3150-092-446	3150-094-446
Cayenne Maple	Pewter	3150-092-447	3150-094-447
Honey Maple	Pewter	3150-092-448	3150-094-448
Select Cherry	Pewter	3150-092-449	3150-094-449
Hard Rock Maple	Coffee	3150-090-441	3150-093-441
Fine Oak	Coffee	3150-090-442	3150-093-442
Port Maple	Coffee	3150-090-443	3150-093-443
Wild Cherry	Coffee	3150-090-446	3150-093-446
Cayenne Maple	Coffee	3150-090-447	3150-093-447
Honey Maple	Coffee	3150-090-448	3150-093-448
Select Cherry	Coffee	3150-090-449	3150-093-449
Hard Rock Maple	Graphite	3150-091-441	3150-095-441
Fine Oak	Graphite	3150-091-442	3150-095-442
Port Maple	Graphite	3150-091-443	3150-095-443
Wild Cherry	Graphite	3150-091-446	3150-095-446
Cayenne Maple	Graphite	3150-091-447	3150-095-447
Honey Maple	Graphite	3150-091-448	3150-095-448
Select Cherry	Graphite	3150-091-449	3150-095-449
Hard Rock Maple	Light Chocolate	3150-089-441	3150-087-441
Fine Oak	Light Chocolate	3150-089-442	3150-087-442
Port Maple	Light Chocolate	3150-089-443	3150-087-443
Wild Cherry	Light Chocolate	3150-089-446	3150-087-446
Cayenne Maple	Light Chocolate	3150-089-447	3150-087-447
Honey Maple	Light Chocolate	3150-089-448	3150-087-448
Select Cherry	Light Chocolate	3150-089-449	3150-087-449
Tops Prior to 2/1/2005 (Available as Service Parts Only)			
Hearth Oak	Pewter	3150-092-444	3150-094-444
Royal Maple	Pewter	3150-092-445	3150-094-445
Hearth Oak	Coffee	3150-090-444	3150-093-444
Royal Maple	Coffee	3150-090-445	3150-093-445
Hearth Oak	Graphite	3150-091-444	3150-095-444
Royal Maple	Graphite	3150-091-445	3150-095-445

[Return To Table of Contents](#)

Gas Spring



Gas Spring Type	Part Number
Low Pressure (Single-top)	3150-002-310
Mid Pressure (Single-top With Vanity)	3150-002-320
High Pressure (Split-top)	3150-002-330

FOR OPTIONAL STORAGE COMPARTMENT ONLY:

Gas Spring Type	Part Number
Low Pressure (Single-top)	3151-002-101
Mid Pressure (Single-top With Vanity)	3151-002-102
High Pressure (Split-top)	3151-002-103

Warranty

Stryker Medical stands behind the craftsmanship of our products. Providing our customers quality products is our mission, and we pledge to do everything we can to quickly resolve any problems encountered within the terms of the warranties listed below. These warranties apply only to products manufactured after January 1, 2008.

ONE YEAR WARRANTY

Stryker warrants the following products for one year under normal use and proper care. For one year from date of shipment, Stryker will repair or, at our option, replace defective merchandise free of charge (parts, labor and shipping included).

- Tru-Fit® Overbed Tables.
- Bedside Stands (*Note: LIFETIME WARRANTY on metal drawer frames and glides).
- Maternity Furniture.
- Flexsteel Hospital Recliner.

The Limited Lifetime and One Year warranties listed above are void in cases of modifications, misuse, improper assembly or maintenance, accidents, damage caused by a carrier other than Stryker Medical, and the use of customer's own material.

Stryker makes no other warranty or representation, either expressed or implied, except as set forth herein. There is no warranty of merchantability and there are no warranties of fitness for any particular purpose. In no event shall Stryker be liable hereunder for incidental or consequential damages arising from or in any manner related to sales or use of any such equipment.

TO OBTAIN PARTS AND SERVICE

Stryker products are supported by a nationwide network of dedicated Stryker Field Service Representatives. These representatives are factory trained, available locally, and carry a substantial spare parts inventory to minimize repair time. Simply call your local representative, or call Stryker Customer Service USA at 1-800-327-0770.

RETURN AUTHORIZATION

Merchandise cannot be returned without approval from the Stryker Customer Service Department. An authorization number will be provided which must be printed on the returned merchandise. Stryker reserves the right to charge shipping and restocking fees on returned items. **Special, modified, or discontinued, items not subject to return.**

DAMAGED MERCHANDISE

ICC Regulations require that claims for damaged merchandise must be made with the carrier within fifteen (15) days of receipt of merchandise. **Do not accept damaged shipments unless such damage is noted on the delivery receipt at the time of receipt.** Upon prompt notification, Stryker will file a freight claim with the appropriate carrier for damages incurred. Claim will be limited in amount to the actual replacement cost. In the event that this information is not received by Stryker within the fifteen (15) day period following the delivery of the merchandise, or the damage was not noted on the delivery receipt at the time of receipt, the customer will be responsible for payment of the original invoice in full. Claims for any short shipment must be made within thirty (30) days of invoice.

INTERNATIONAL WARRANTY CLAUSE

This warranty reflects U.S. domestic policy. Warranty outside the U.S. may vary by country. Please contact your local Stryker Medical representative for additional information.

Warranty

SERVICE CONTRACT COVERAGE

Stryker has developed a comprehensive program of service contract options designed to keep your equipment operating at peak performance at the same time it eliminates unexpected costs. We recommend that these programs be activated before the expiration of the new product warranty to eliminate the potential of additional equipment upgrade charges.

A Service Contract helps to:

- Ensure equipment reliability
- Stabilize maintenance budgets
- Diminish downtime
- Establish documentation for JCAHO
- Increase product life
- Enhance trade-in value
- Address risk management and safety

SERVICE CONTRACT PROGRAMS

Stryker offers the following service contract programs:

Service Agreement Options *	Gold	Silver	Parts	Labor	PM
Annually scheduled preventative maintenance	X				X
All parts	X	X	X		
All labor and travel	X	X		X	
Unlimited emergency service calls	X	X		X	
Priority one contact: two hour phone response	X	X	X	X	
Most repairs completed within 3 days	X	X		X	
JCAHO documentation	X	X		X	X
On-site record of PM & emergency service	X				X
Factory-trained Stryker service technician	X	X		X	X
Stryker authorized parts used	X	X	X	X	X
Service during regular business hours (8–5)	X	X	X	X	X

* Does not include maintenance due to abuse or for any disposable items. Stryker reserves the right to change options without notice.

Stryker Medical also offers personalized service contracts.
Pricing is determined by age, location, model and condition of product.

**For more information on our service contracts,
please call your local representative.**



Stryker Medical
3800 E. Centre Ave.
Portage, Michigan 49002
USA

stryker[®]