



Tru-Fit<sup>®</sup> Overbed Table  
Model 3150

# stryker<sup>®</sup>

## Operations/Maintenance Manual



For parts or technical assistance call  
(800) 327-0770 (option 2)





# Table of Contents

---


Introduction . . . . .	4
Intended Use . . . . .	4
Specifications . . . . .	4
Warning / Caution / Note Definition. . . . .	5
Symbols . . . . .	5
Summary of Safety Precautions . . . . .	6
Single Top With or Without Optional Vanity . . . . .	7
Operations . . . . .	8
Split Top With Optional Vanity . . . . .	8
Clip Operation . . . . .	9
Bin Operation . . . . .	10
Checklist . . . . .	11
Cleaning . . . . .	11
Service Information. . . . .	13
Optional Storage Compartment Removal . . . . .	13
Primary Top Replacement (Single Top and Single Top with Vanity Only) . . . . .	13
Primary Top Replacement (Split Top with Vanity Only). . . . .	14
Secondary Top Replacement (Split Top Only) . . . . .	14
Upper Column Replacement. . . . .	15
Gas Spring Replacement . . . . .	15
Caster Replacement . . . . .	15
Base Hood Replacement . . . . .	16
Vanity Tray Replacement (Single Top Only). . . . .	17
Vanity Tray Replacement (Split Top Only) . . . . .	17
Vanity Tray Mirror Replacement . . . . .	18
Optional Storage Compartment Installation Instructions. . . . .	18
Single Top Overbed Table Assembly, Without Vanity . . . . .	19
Single Top Assembly, Without Vanity . . . . .	20
Single Top Overbed Table Assembly, With Vanity. . . . .	22
Single Top Assembly, With Vanity . . . . .	23
Split Top Overbed Table Assembly . . . . .	25
Split Top Assembly. . . . .	26
Gas Spring. . . . .	28
Base Assembly. . . . .	29
Optional Storage Compartment. . . . .	31
Warranty . . . . .	34
One Year Warranty . . . . .	34
To Obtain Parts and Service . . . . .	34
Return Authorization. . . . .	34
Damaged Merchandise . . . . .	34
International Warranty Clause. . . . .	34
Service Contract Coverage . . . . .	35
Service Contract Programs . . . . .	35

# Introduction

## INTENDED USE

This manual is designed to assist you with the maintenance of Stryker Overbed Table, Model 3150. Carefully read this manual thoroughly before using the equipment or beginning maintenance on it. To ensure safe operation of this equipment, it is recommended that methods and procedures be established for educating and training staff on the safe operation of this product.

## SPECIFICATIONS

	* Safe Working Load	25 lbs
---	---------------------	--------

### OVERBED TABLE WITHOUT OPTIONAL STORAGE COMPARTMENT

	Single Top without Vanity	Single Top with Vanity	Split Top with Vanity
Base Length	32"	32"	32"
Overall Table Top Length/Width	31" / 17.5"	31" / 17.5"	31" / 17.5"
Minimum/Maximum Table Top Height	27" / 43.75"	27" / 43.75"	29" / 45.5"
Weight of Table	43 pounds	50 pounds	61 pounds
Weight Capacity of Table *	75 pounds	75 pounds	75 pounds

### OVERBED TABLE WITH OPTIONAL STORAGE COMPARTMENT

	Single Top without Vanity	Single Top with Vanity	Split Top with Vanity
Base Length	32"	32"	32"
Overall Table Top Length/Width	42.75" / 17.5"	42.75" / 17.5"	42.75" / 17.5"
Minimum/Maximum Table Top Height	27" / 43.75"	27" / 43.75"	29" / 45.5"
Weight of Table	68 pounds	75 pounds	86 pounds
Weight Capacity of Table *	75 pounds	75 pounds	75 pounds

### SAFE OPERATING LOADS OF OPTIONAL STORAGE COMPARTMENT

Top Shelf	20 pounds
Bottom Shelf	20 pounds

***Stryker reserves the right to change specifications without notice.***

# Introduction

---

## WARNING / CAUTION / NOTE DEFINITION

The words WARNING, CAUTION, and NOTE carry special meanings and should be carefully reviewed.

---

### **WARNING**

Alerts the reader about a situation, which if not avoided, could result in death or serious injury. It may also describe potential serious adverse reactions and safety hazards.

---

### **CAUTION**

Alerts the reader of a potentially hazardous situation, which if not avoided, may result in minor or moderate injury to the user or patient or damage to the equipment or other property. This includes special care necessary for the safe and effective use of the device and the care necessary to avoid damage to a device that may occur as a result of use or misuse.

---

### **Note**

This provides special information to make maintenance easier or important instructions clearer.

# Symbols

---



Warning, consult accompanying documentation



Safe Working Load Symbol

# Summary of Safety Precautions

---

## WARNINGS

---

- Do not lean on table. Leaning on table may cause the table to tip which may result in injury to the individual or damage to the unit.

## CAUTIONS

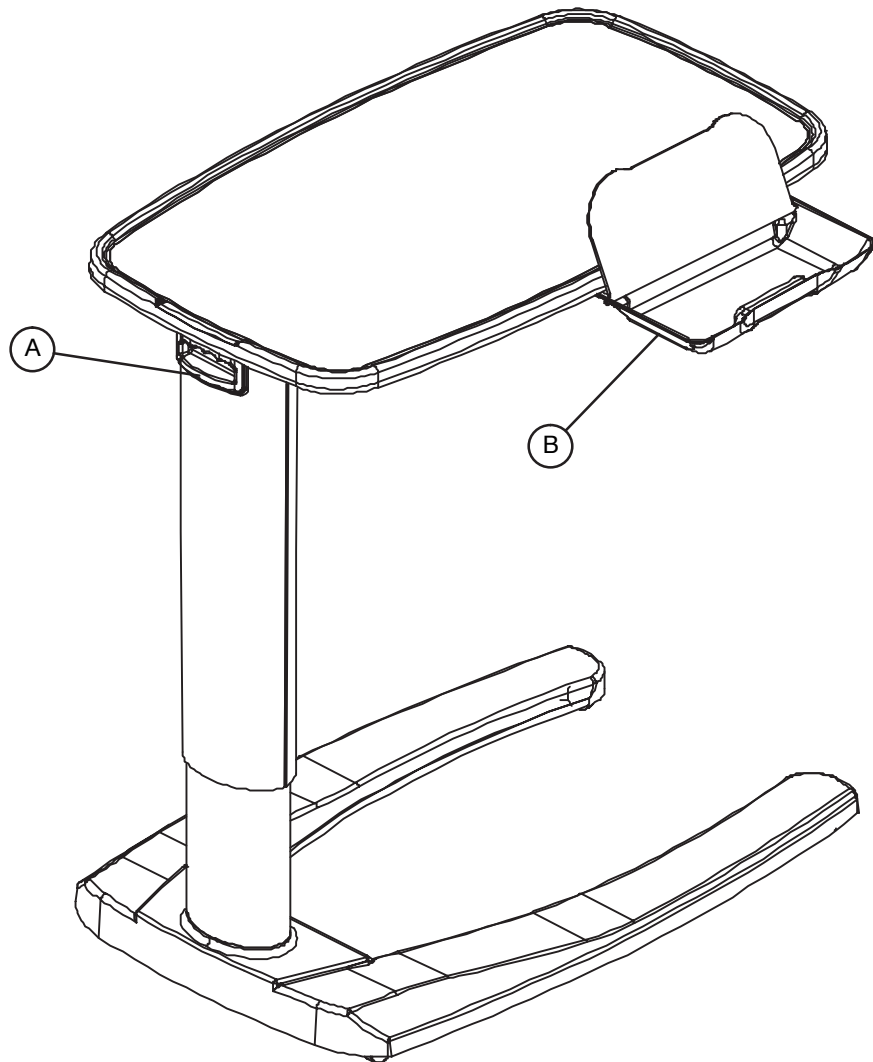
---

- Use discretion in the placement of personal items located near or by biohazardous/unsanitary materials.
- Do not apply lubricant of any kind to the gas spring. Lubricant will damage the gas spring.

# Operations

---

## SINGLE TOP WITH OR WITHOUT OPTIONAL VANITY



1. Pull up on the table top to raise it.
2. To unlock and lower the table top, squeeze handle (A) while guiding the table top down.
3. Pull out the optional vanity (B) with the flip up mirror in either direction (if equipped).

---

**⚠ WARNING**

**Do not lean on table.** Leaning on table may cause the table to tip which may result in injury to the individual or damage to the unit.

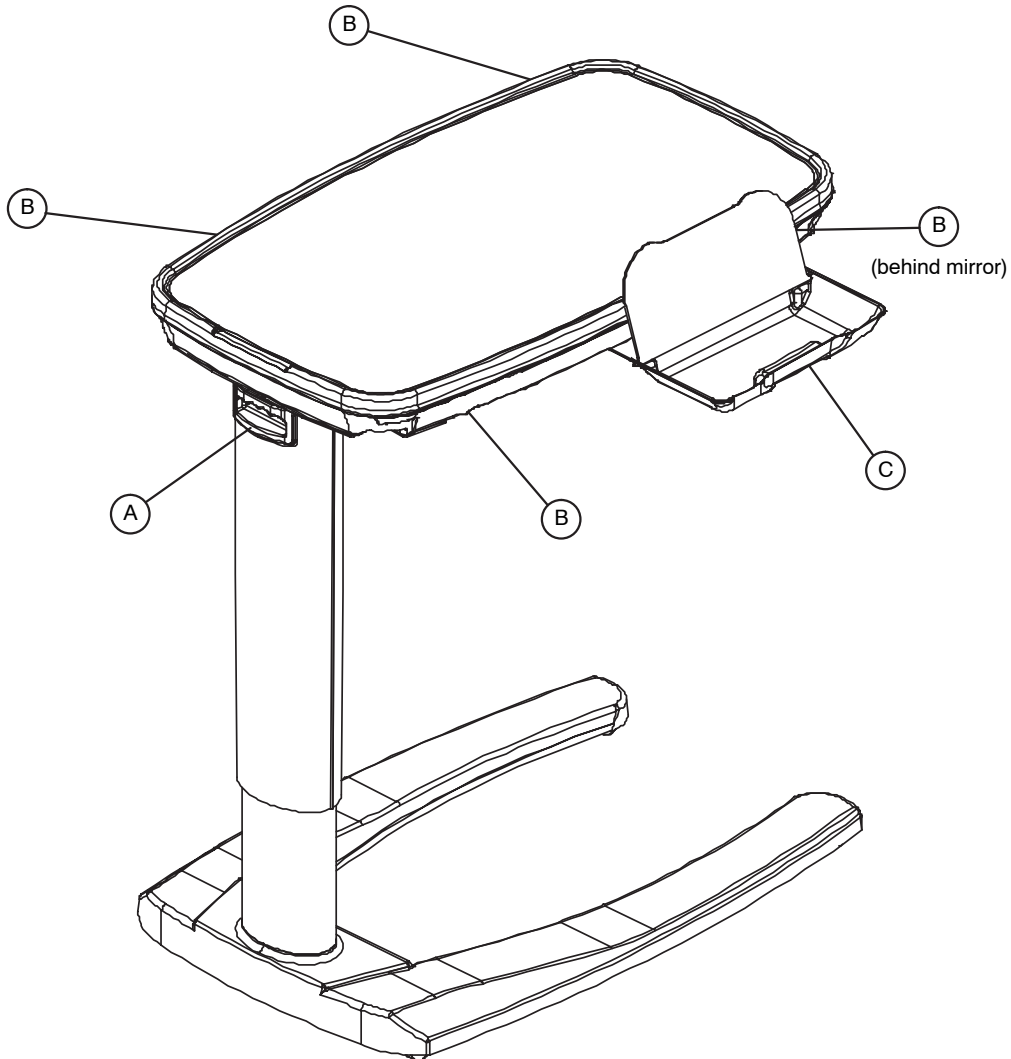
---

[Return To Table of Contents](#)

# Operations

---

## SPLIT TOP WITH OPTIONAL VANITY



1. Pull up on the table top to raise it.
2. To unlock and lower the table top, squeeze handle (A) while guiding the table top down.
3. Grasp and pull any of the four handles (B) to slide out the secondary top in either direction.
4. Pull out the vanity (C) with the flip up mirror in either direction.

---

### **WARNING**

**Do not lean on table.** Leaning on table may cause the table to tip which may result in injury to the individual or damage to the unit.



# Operations

---

## CLIP OPERATION



1. Push clip back.
2. Insert waste bag.
3. Release clip.

---

 **WARNING**

**Do not lean on table.** Leaning on table may cause the table to tip which may result in injury to the individual or damage to the unit.

# Operations

---

## BIN OPERATION



1. Pull bin out to access storage.
2. Push bin in to close.

---

 **WARNING**

**Do not lean on table.** Leaning on table may cause the table to tip which may result in injury to the individual or damage to the unit.

# Preventative Maintenance

---

## CHECKLIST

- \_\_\_\_\_ All fasteners secure.
- \_\_\_\_\_ Top and laminate intact - not damaged.
- \_\_\_\_\_ Top edge mold intact - not damaged.
- \_\_\_\_\_ Release handle locking and releasing properly.
- \_\_\_\_\_ All casters secure and swiveling properly.
- \_\_\_\_\_ No debris in casters.
- \_\_\_\_\_ Base hood intact - not damaged.
- \_\_\_\_\_ Optional pull-out vanity and mirror intact and secure.
- \_\_\_\_\_ Optional Storage Compartment intact - not damaged.

---

## CAUTION

Do not apply lubricant of any kind to the gas spring. Lubricant will damage the gas spring.

Overbed Table Serial Number:		

Completed by: \_\_\_\_\_ Date: \_\_\_\_\_

## Cleaning

---

The Center for Disease Control recommends a 1:4 mixture of bleach and water for disinfection. Thoroughly rinse the solution from the product surface. If other hospital-grade cleaning agents are used, follow the instructions provided by the cleaning solution's manufacturer. Wipe the surface with a soft, dry cloth to remove any moisture.

As part of routine maintenance, follow steps 1-5 of the upper column replacement procedure on [page 15](#) to remove the top assembly from the base assembly. Use a soft cloth to remove dust and debris from the top weldment tube and the inside of the base column. Spray the top weldment tube with pure silicone spray before reassembly. **DO NOT** use WD-40 or any other lubricant or damage to the table could occur.

# Troubleshooting Guide

---

Identify the problem from the table below and follow the instructions for resolution. If assistance is needed at any time during troubleshooting, please contact a service technician at 1-800-327-0770 option 2.

Problem / Failure	Recommended Action
Table drifts up.	Make sure original table top and storage compartment (if applicable) remain attached to the base. If so, then replace the gas spring (see <a href="#">page 15</a> ).
Table drifts down without weight on table top.	If the table is difficult to raise and drops back down when released, replace the gas spring (see <a href="#">page 15</a> ).
Table has a spongy feeling.	This is normal as long as long as it does not drift down.
Table drifts down with weight on table top.	Adjust the gas spring lock pin for more clearance so there is a little play in the handle.
Table randomly drifts down with light weight load applied.	Replace gas spring (see <a href="#">page 15</a> ).
Squeaky noise in between base and column.	Add 1/4" washers under the four main base bolts. <b>Note:</b> remove and reinstall bolts one at a time.

# Service Information

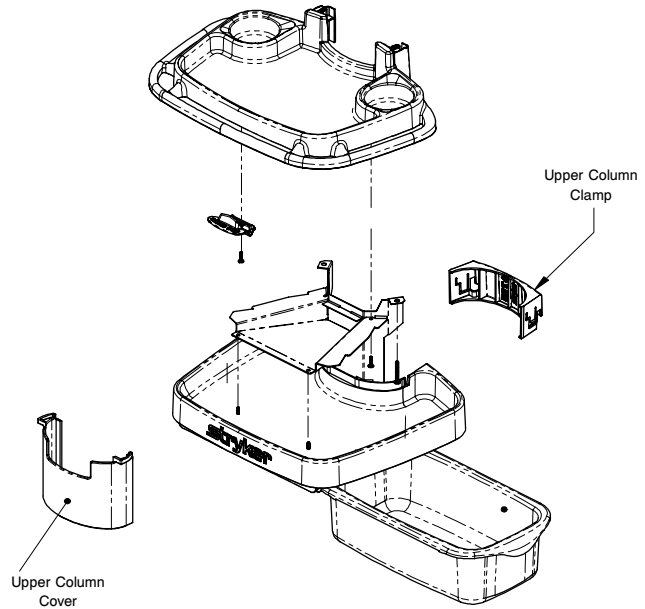
## OPTIONAL STORAGE COMPARTMENT REMOVAL

### Tools Required:

- T25 Torx Driver
- T27 Torx Driver
- Regular Screwdriver

### Procedure:

1. Raise the table to its full height.
2. Remove the upper column cover by pulling outward slightly on both sides and pulling out and down.
3. Using a regular screwdriver, unlock the lock tabs and remove the upper column clamp.
4. Using a T25 Torx driver, remove the T25 Torx screw from the top front of the upper column.
5. Remove the storage compartment.



## PRIMARY TOP REPLACEMENT (SINGLE TOP AND SINGLE TOP WITH VANITY ONLY)

### Tools Required:

- #2 Phillips Screwdriver

### WARNING

To avoid personal injury or damage to the table, support the table top before removing the screws securing it to the top support.

### Procedure:

1. If your unit has a storage compartment, follow the procedures above for Storage Compartment Removal, then proceed to step 2.
2. Lift the table to its highest height.
3. Using a Phillips screwdriver, remove the four #2 Phillips screws under the table top holding the top to the support weldment.
4. Lift off the table top.
5. If your unit has a vanity tray installed, follow steps 5a through 5c. If not, proceed to step 6.
  - a. Turn the table top over.
  - b. Using a Phillips screwdriver, remove the ten #10 Phillips screws holding the vanity tracks to the bottom of the table top.
  - c. Remove the vanity tray from the table top.
6. Reverse procedures to install the new top.

[Return To Table of Contents](#)

# Service Information

---

## PRIMARY TOP REPLACEMENT (SPLIT TOP WITH VANITY ONLY)

### Tools Required:

- #2 Phillips Screwdriver
- 3/8" Nut Driver

---

### WARNING

To avoid personal injury or damage to the table, support the table top before removing the screws securing it to the top support.

### Procedure:

1. If your unit has a storage compartment, follow the procedures above for Storage Compartment Removal, then proceed to step 2.
2. Lift the table to its highest height.
3. Using a 3/8" nut driver, remove the 3/8" acorn nuts from the bottom of the table at each of the four corners.
4. Lift off the table top.

---

### WARNING

To avoid personal injury or damage to the table, while turning the table top over, securely hold the top on the sides to prevent the primary and secondary tops from separating.

5. Turn the table top upside down and separate the primary and secondary tops.
6. Using a Phillips screwdriver, remove the six #10 Phillips screws holding the two slides on the primary table top and set them aside.
7. Reverse procedures to install the new top.

## SECONDARY TOP REPLACEMENT (SPLIT TOP ONLY)

### Tools Required:

- 3/8" Nut Driver

---

### WARNING

To avoid personal injury or damage to the table:

- Support the table top before removing the screws securing it to the top support.
- While turning the table top over, securely hold the top on the sides to prevent the primary and secondary tops from separating.

### Procedure:

1. If your unit has a storage compartment, follow the procedures on [page 13](#) for Storage Compartment Removal then proceed to step 2.
2. Using a 3/8" nut driver, remove the 3/8" acorn nuts from the bottom of the table at each of the four corners.
3. Lift off the table top.
4. Turn the table top upside down and separate the primary and secondary tops.
5. Turn over the secondary top, turn the vanity tray approximately 45 and remove it from the table top.
6. Reverse procedures to install the new top.

# Service Information

---

## UPPER COLUMN REPLACEMENT

### Tools Required:

- #2 Phillips Screwdriver
- T25 Torx Driver
- T27 Torx Driver

### Procedure:

1. If your unit has a storage compartment, follow the procedures on [page 13](#) for Storage Compartment Removal then proceed to step 2.
2. Using a T25 Torx driver, remove the three T25 Torx screws from the top of the upper column and lower the column down to the base.
3. Using a T27 Torx driver, remove the two T27 Torx screws holding the upper bushing to the lower column.
4. Lift the top assembly straight up and out of the lower column and set it aside.
5. Reverse procedures to reassemble.

## GAS SPRING REPLACEMENT

### Tools Required:

- T25 Torx Driver
- T27 Torx Driver

### Procedure:

1. If your unit has a storage compartment, follow the procedures on [page 13](#) for Storage Compartment Removal then proceed to step 2.
2. Using a T25 Torx driver, remove the three T25 Torx screws from the top of the upper column and lower the column down to the base.
3. Using a T27 Torx driver, remove the two T27 Torx screws holding the upper bushing to the lower column.
4. Lift the top assembly out of the lower column and set it aside.
5. Remove the gas spring release lever from the gas cylinder, push down on the lever and pull it out while moving it slightly from side to side.
6. Remove the ruc clip from the clevis pin holding the gas spring assembly to the top weldment and remove the clevis pin.
7. Reverse to install the new gas spring. **NOTE:** When reinstalling the upper bushing, compress the gas spring slightly before tightening the two T27 Torx screws holding the bushing to the lower column.

## CASTER REPLACEMENT

### Tools Required:

- Cordless Drill, 3/16" Drill Bit
- Pop Rivet Gun with 3/16" Tip

### Procedure:

1. Fully raise the table top.
2. While maintaining a secure grip on the table, carefully flip it forward or turn it on its side to allow access to the damaged caster.
3. Using a cordless drill and 3/16" drill bit, drill out the two rivets and remove the damaged caster.
4. Using a pop rivet gun with a 3/16" tip, install the new caster using two new pop rivets.

[Return To Table of Contents](#)

# Service Information

---

## BASE HOOD REPLACEMENT

### Tools Required:

- #2 Phillips Screwdriver
- T25 Torx Driver
- T27 Torx Driver
- 3/8" Ratchet
- 3/8" Nut Driver
- 7/16" Socket

---

### WARNING

To avoid personal injury or damage to the table, support the table top before removing the screws securing it to the top support.

### Procedure:

1. If your unit has a storage compartment, follow the procedures on [page 13](#) for Storage Compartment Removal, then proceed to step 2.
2. While holding the upper column, use a T25 Torx driver and remove the three T25 Torx screws from the top of the upper column then lower the column down to the base.
3. Using the T27 Torx driver, remove the two T27 Torx screws holding the upper bushing to the lower column.
4. Lift the top assembly straight up and out of the lower column and set it aside.
5. Lift the upper column off the lower column and remove it from the base.  
**NOTE: It is easier to perform the next step while sitting on a chair.**
6. Flip the base and lower column over and rest the lower column on the top of your thigh.
7. Using the T27 Torx driver, remove the four T27 Torx screws from the bottom of the base holding the column assembly and remove the lower column.
8. Turn the base and hood over. Using the Phillips screwdriver, remove the six #8 Phillips screws holding the hood to the base.
9. Turn the base back over and remove the hood.
10. Reverse procedures to install the new hood.



# Service Information

---

## VANITY TRAY REPLACEMENT (SINGLE TOP ONLY)

### Tools Required:

- #2 Phillips Screwdriver

---

### WARNING

To avoid personal injury or damage to the table, support the table top before removing the screws securing it to the top support.

### Procedure:

1. Raise the table top to its highest height.
2. Using a Phillips screwdriver, remove the four #10 Phillips screws under the table top holding the top to the support weldment.
3. Lift off the table top.
4. Turn over the table top.
5. Using a Phillips screwdriver, remove the five #10 Phillips screws holding one of the vanity tracks to the bottom of the table top.
6. Remove the vanity from the table top.
7. Reverse procedures to install the new vanity tray.

## VANITY TRAY REPLACEMENT (SPLIT TOP ONLY)

### Tools Required:

- 3/8" Nut Driver

---

### WARNING

To avoid personal injury or damage to the table, support the table top before removing the nuts securing it to the top support.

### Procedure:

1. Raise the table top to its highest height.
2. Using a 3/8" nut driver, remove the 3/8" acorn nuts from the bottom of the table at each of the four corners.
3. Lift off the table top.

---

### WARNING

To avoid personal injury or damage to the table, while turning the table top over, securely hold the top on the sides to prevent the primary and secondary tops from separating.

4. Turn over the table top, turn the vanity tray approximately 45° and remove it from the table top.
5. Reverse procedures to install the new vanity tray.

# Service Information

---

## VANITY TRAY MIRROR REPLACEMENT

### Tools Required:

- None

### Procedure:

1. Open the side of the vanity tray with the broken mirror and flip up the mirror.
2. While holding the top of the broken mirror with one hand, use your other hand to flex the bottom of the mirror in the middle and remove it from the vanity.
3. Reverse procedures to install the new mirror.

## OPTIONAL STORAGE COMPARTMENT INSTALLATION INSTRUCTIONS

### Tools Required:

- T25 Torx Driver
- T27 Torx Driver



### CAUTION

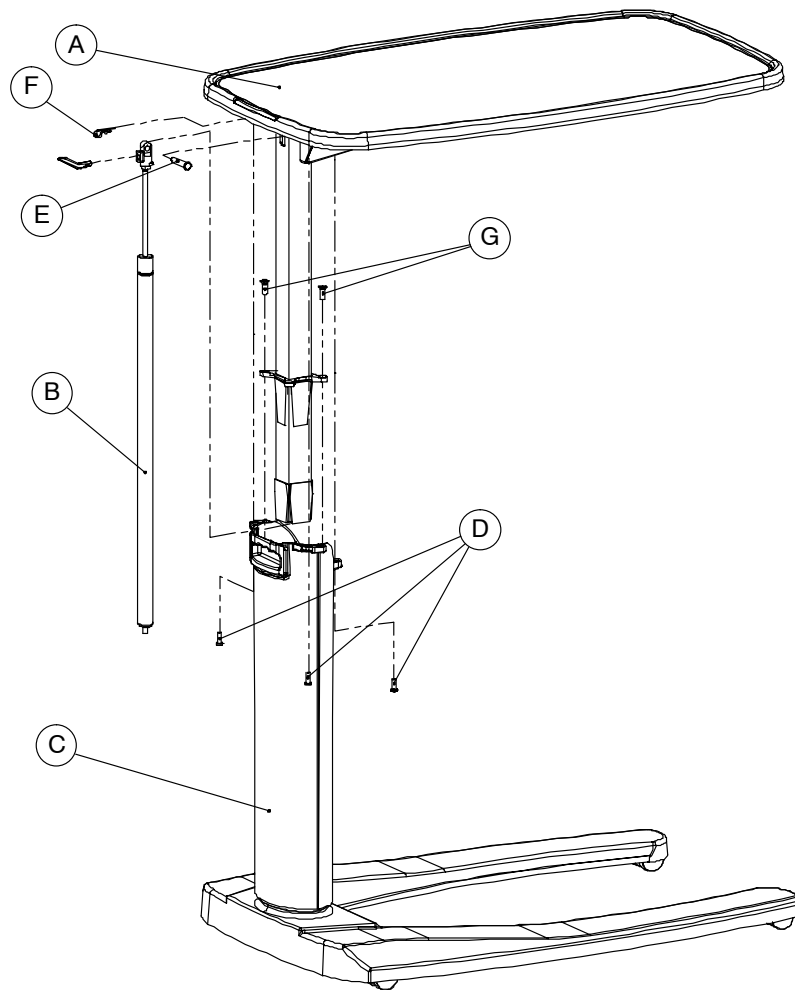
Make sure that nothing is on top of the unit and that you have the unit fully supported so not to cause damage to the OBT nor to cause injury to yourself.

### Procedure:

1. Install the increased pressure gas spring by following the gas spring replacement instructions located in this Operations/Maintenance manual for the model of the Overbed Table (OBT) that the option is being added to.  
**NOTE: Leave the two T25 screws removed from the handle side of the outer column out and discard.**
2. Raise the OBT to the full upright position and then flip the unit on end so that the column is nearest the ceiling.
3. Set the Storage Compartment unit on top of the outer column just under the release handle. Using the 2 Torx screws supplied with the kit, secure the unit to the top weldment where the two T25 Torx screws were removed. Tighten securely.
4. Slide the upper column clamp into the bottom shelf which will lock when fully seated. The clamp slides downward with the curved section next to the table column.
5. Install the upper column cover by angling it towards the top tray and gently stretching it at the bottom, lock it over the frame assembly.
6. Install the two leg ballasts located under the base, adjacent to the casters by threading the self tapping T27 screw supplied into the base weldment. A hole in the weldment exists for the screw.  
**NOTE: There is a left and right ballast and the ballasts are also keyed to the base cover.**
7. Stand the OBT back upright and insert the storage bin.
8. Test functionality of the OBT and storage bin and then return to service.

# Single Top Overbed Table Assembly, Without Vanity

For Reference Only: Part Number 3150-000-001

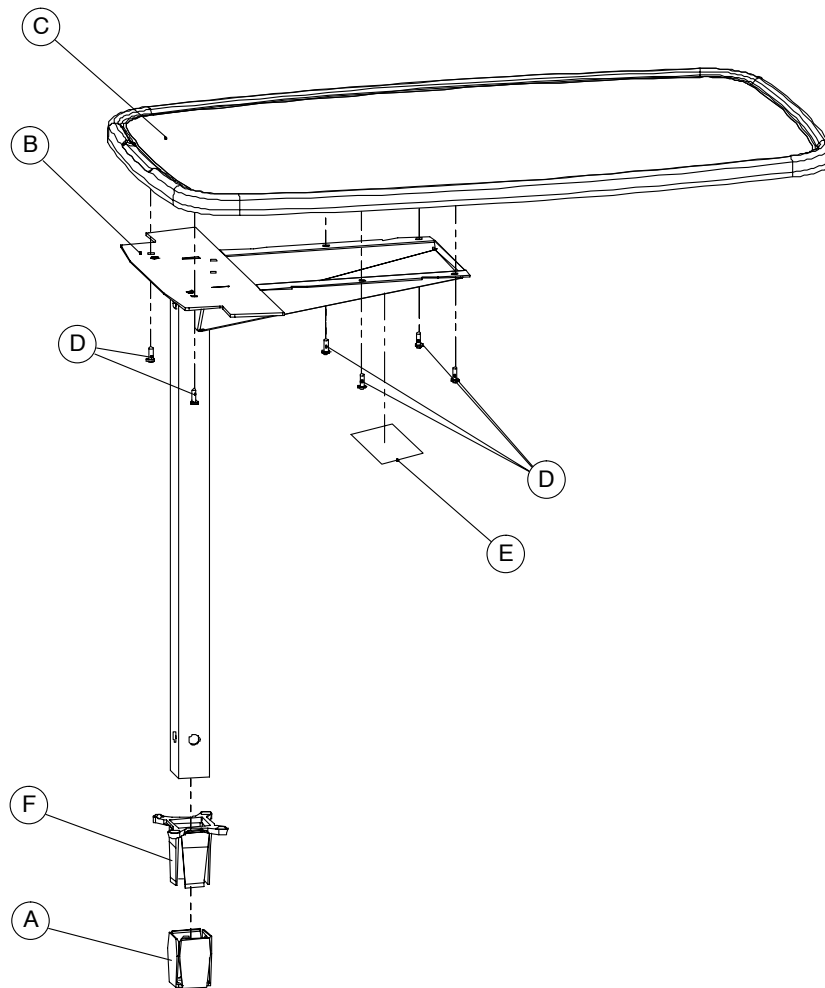


Item	Part No.	Part Name	Qty.
A	3150-010-001	Single Top, without Vanity ( <a href="#">see page 20</a> )	1
B	( <a href="#">see page 28</a> )	Gas Spring (Low Pressure)	1
C	3150-001-000	Base Assembly ( <a href="#">see page 29</a> )	1
D	0004-136-000	Pan Head Machine Screw	3
E	0026-296-000	Gas Spring Clevis	1
F	0027-019-000	Rue Clip	1
G	0001-163-000	Flat Countersunk Head Screw	2

[Return To Table of Contents](#)

# Single Top Assembly, Without Vanity

For Reference Only: Part Number 3150-010-001



Item	Part No.	Part Name	Qty.
A	3150-002-405	Lower Bushing	1
B	3150-010-115	Top Support Weldment	1
C	<a href="#">(see page 21)</a>	Primary Top Assembly Options	1
D	0023-256-000	Phillips Pan Head Screw	6
E	3150-009-100	Label	1
F	3150-002-410	Upper Bushing	1

# Single Top Assembly, Without Vanity

Single Top Laminate / Edge Mold Options

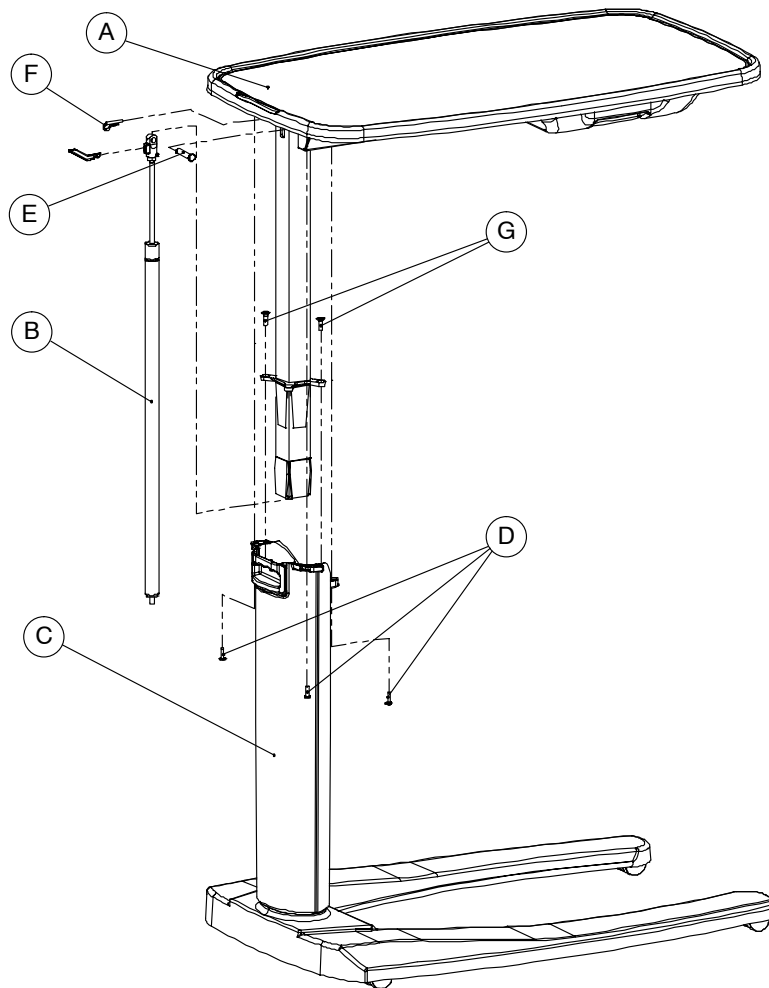


Laminate Color	Edge Mold Color	Top Part Number
Hard Rock Maple	Pewter	3150-092-441
Fine Oak	Pewter	3150-092-442
Port Maple	Pewter	3150-092-443
Wild Cherry	Pewter	3150-092-446
Cayenne Maple	Pewter	3150-092-447
Honey Maple	Pewter	3150-092-448
Select Cherry	Pewter	3150-092-449
Hard Rock Maple	Coffee	3150-090-441
Fine Oak	Coffee	3150-090-442
Port Maple	Coffee	3150-090-443
Wild Cherry	Coffee	3150-090-446
Cayenne Maple	Coffee	3150-090-447
Honey Maple	Coffee	3150-090-448
Select Cherry	Coffee	3150-090-449
Hard Rock Maple	Graphite	3150-091-441
Fine Oak	Graphite	3150-091-442
Port Maple	Graphite	3150-091-443
Wild Cherry	Graphite	3150-091-446
Cayenne Maple	Graphite	3150-091-447
Honey Maple	Graphite	3150-091-448
Select Cherry	Graphite	3150-091-449
Hard Rock Maple	Light Chocolate	3150-089-441
Fine Oak	Light Chocolate	3150-089-442
Port Maple	Light Chocolate	3150-089-443
Wild Cherry	Light Chocolate	3150-089-446
Cayenne Maple	Light Chocolate	3150-089-447
Honey Maple	Light Chocolate	3150-089-448
Select Cherry	Light Chocolate	3150-089-449
<b>Tops Prior to 2/1/2005 (Available as Service Parts Only)</b>		
Hearth Oak	Pewter	3150-092-444
Royal Maple	Pewter	3150-092-445
Hearth Oak	Coffee	3150-090-444
Royal Maple	Coffee	3150-090-445
Hearth Oak	Graphite	3150-091-444
Royal Maple	Graphite	3150-091-445

[Return To Table of Contents](#)

# Single Top Overbed Table Assembly, With Vanity

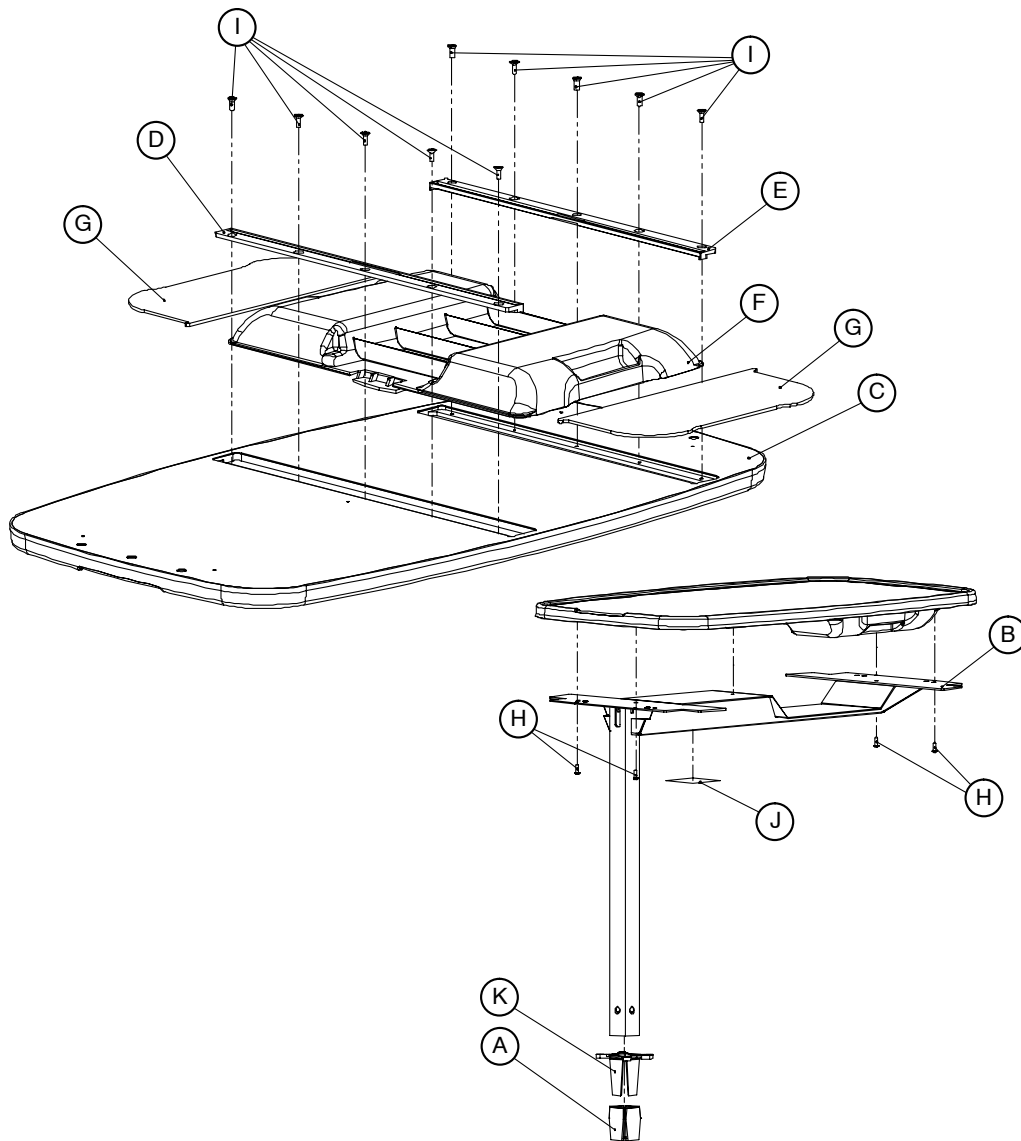
For Reference Only: Part Number 3150-000-002



Item	Part No.	Part Name	Qty.
A	3150-010-002	Single Top, with Vanity ( <a href="#">see page 23</a> )	1
B	<a href="#">(see page 28)</a>	Gas Spring (Low Pressure)	1
C	3150-001-000	Base Assembly ( <a href="#">see page 29</a> )	1
D	0004-136-000	Pan Head Machine Screw	3
E	0026-296-000	Gas Spring Clevis	1
F	0027-019-000	Rue Clip	1
G	0001-163-000	Flat Countersunk Head Screw	2

# Single Top Assembly, With Vanity

For Reference Only: Part Number 3150-010-002



Item	Part No.	Part Name	Qty.
A	3150-002-405	Lower Bushing	1
B	3150-010-105	Top Support Weldment	1
C	<a href="#">(see page 24)</a>	Primary Top Assembly	1
D	3150-010-221	Long Track	1
E	3150-010-222	Short Track	1
F	3150-010-500	Vanity Tray	1
G	3150-010-510	Vanity Mirror	2
H	0023-256-000	Phillips Pan Head Screw	4
I	0020-020-000	Flat Head Wood Screw	10
J	3150-009-100	Label	1
K	3150-002-410	Upper Bushing	1

[Return To Table of Contents](#)

# Single Top Assembly, With Vanity

Single Top Lmainate / Edge Mold Options



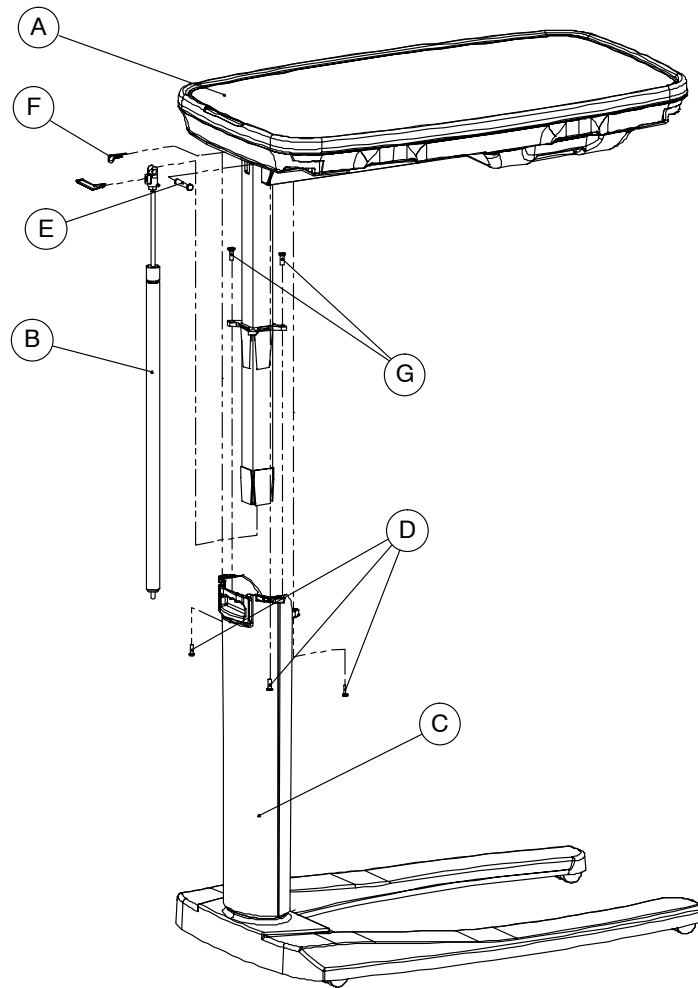
Laminate Color	Edge Mold Color	Primary Top Part Number
Hard Rock Maple	Pewter	3150-096-441
Fine Oak	Pewter	3150-096-442
Port Maple	Pewter	3150-096-443
Wild Cherry	Pewter	3150-096-446
Cayenne Maple	Pewter	3150-096-447
Honey Maple	Pewter	3150-096-448
Select Cherry	Pewter	3150-096-449
Hard Rock Maple	Coffee	3150-097-441
Fine Oak	Coffee	3150-097-442
Port Maple	Coffee	3150-097-443
Wild Cherry	Coffee	3150-097-446
Cayenne Maple	Coffee	3150-097-447
Honey Maple	Coffee	3150-097-448
Select Cherry	Coffee	3150-097-449
Hard Rock Maple	Graphite	3150-098-441
Fine Oak	Graphite	3150-098-442
Port Maple	Graphite	3150-098-443
Wild Cherry	Graphite	3150-098-446
Cayenne Maple	Graphite	3150-098-447
Honey Maple	Graphite	3150-098-448
Select Cherry	Graphite	3150-098-449
Hard Rock Maple	Light Chocolate	3150-089-441
Fine Oak	Light Chocolate	3150-089-442
Port Maple	Light Chocolate	3150-089-443
Wild Cherry	Light Chocolate	3150-089-446
Cayenne Maple	Light Chocolate	3150-089-447
Honey Maple	Light Chocolate	3150-089-448
Select Cherry	Light Chocolate	3150-089-449
<b>Tops Prior to 2/1/2005 (Available as Service Parts Only)</b>		
Hearth Oak	Pewter	3150-096-444
Royal Maple	Pewter	3150-096-445
Hearth Oak	Coffee	3150-097-444
Royal Maple	Coffee	3150-097-445
Hearth Oak	Graphite	3150-098-444
Royal Maple	Graphite	3150-098-445

[Return To Table of Contents](#)



# Split Top Overbed Table Assembly

For Reference Only: Part Number 3150-000-003

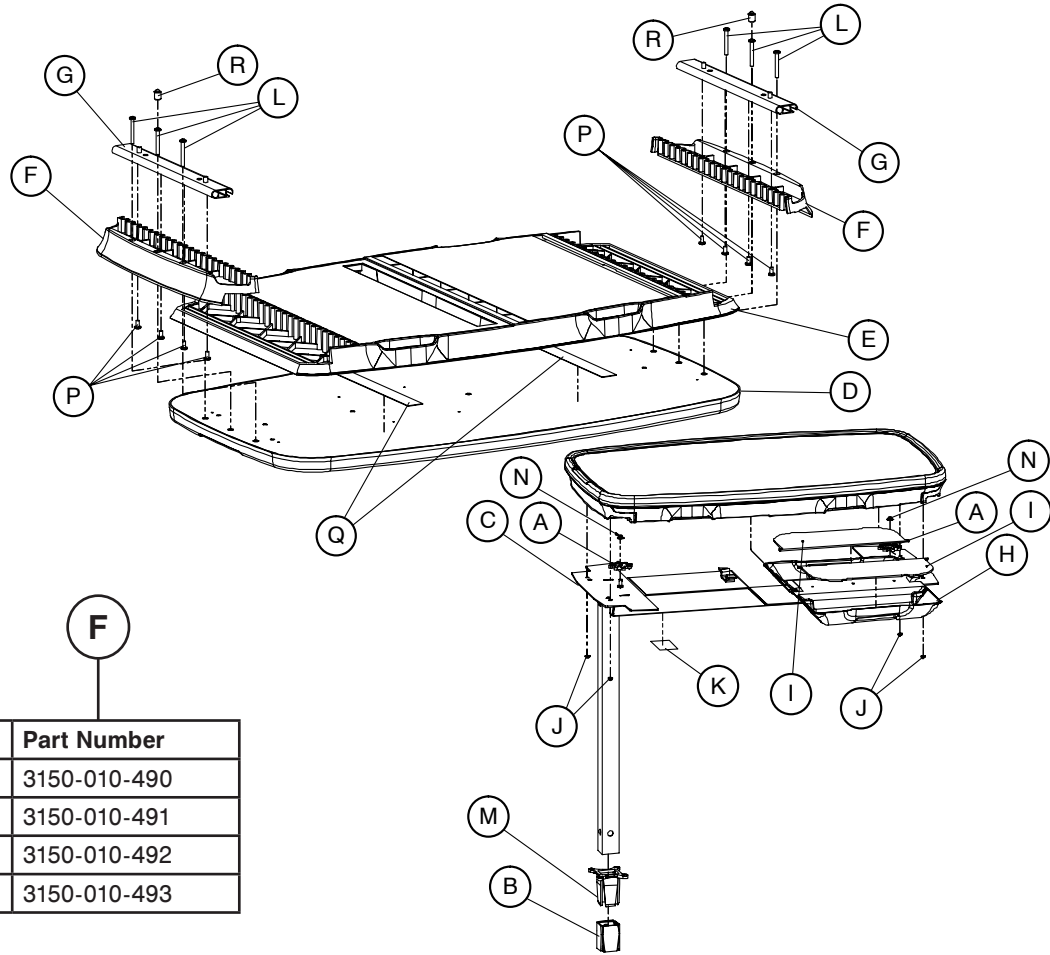


Item	Part No.	Part Name	Qty.
A	3150-010-003	Split Top Assembly ( <a href="#">see page 26</a> )	1
B	( <a href="#">see page 28</a> )	Gas Spring (Low Pressure)	1
C	3150-001-000	Base Assembly ( <a href="#">see page 29</a> )	1
D	0004-136-000	Pan Head Machine Screw	3
E	0026-296-000	Gas Spring Clevis	1
F	0027-019-000	Rue Clip	1
G	0001-163-000	Flat Countersunk Head Screw	2

[Return To Table of Contents](#)

# Split Top Assembly

For Reference Only: Part Number 3150-010-003



Gear Rack Color	Part Number
Pewter	3150-010-490
Coffee	3150-010-491
Graphite	3150-010-492
Light Chocolate	3150-010-493

Item	Part No.	Part Name	Qty.
A	3100-100-079	Gear	2
B	3150-002-405	Lower Bushing	1
C	3150-010-115	Top Weldment	1
D	<a href="#">(see page 27)</a>	Primary Top Assembly	1
E	<a href="#">(see page 27)</a>	Secondary Top Assembly	1
F	<a href="#">(see table above)</a>	Gear Rack	2
G	3150-010-410	Slide	2
H	3150-010-500	Vanity Tray	1
I	3150-010-510	Vanity Mirror	2
J	0017-002-000	Cap Nut	4
K	3150-009-100	Label	1
L	0050-065-000	Phillips Pan Head Screw	6
M	3150-002-410	Upper Bushing	1
N	0016-128-000	Pushnut	2
P	0004-136-000	Pan Head Machine Screw	8
Q	3150-010-411	Bearing Tape	2
R	3150-010-412	Bullet Catch	2

[Return To Table of Contents](#)

# Split Top Assembly

Split Top Laminate / Edge Mold Color Options

**D**

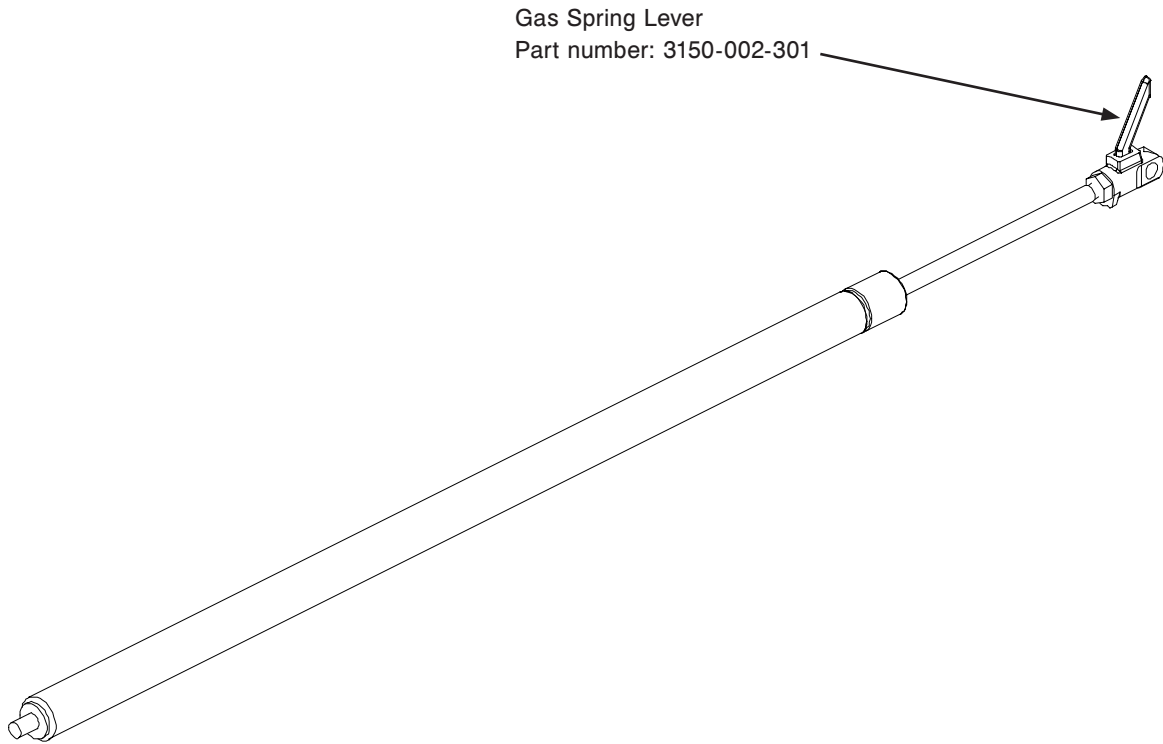
**E**

Laminate Color	Edge Mold Color	Primary Top Part Number	Secondary Top Part Number
Hard Rock Maple	Pewter	3150-092-441	3150-094-441
Fine Oak	Pewter	3150-092-442	3150-094-442
Port Maple	Pewter	3150-092-443	3150-094-443
Wild Cherry	Pewter	3150-092-446	3150-094-446
Cayenne Maple	Pewter	3150-092-447	3150-094-447
Honey Maple	Pewter	3150-092-448	3150-094-448
Select Cherry	Pewter	3150-092-449	3150-094-449
Hard Rock Maple	Coffee	3150-090-441	3150-093-441
Fine Oak	Coffee	3150-090-442	3150-093-442
Port Maple	Coffee	3150-090-443	3150-093-443
Wild Cherry	Coffee	3150-090-446	3150-093-446
Cayenne Maple	Coffee	3150-090-447	3150-093-447
Honey Maple	Coffee	3150-090-448	3150-093-448
Select Cherry	Coffee	3150-090-449	3150-093-449
Hard Rock Maple	Graphite	3150-091-441	3150-095-441
Fine Oak	Graphite	3150-091-442	3150-095-442
Port Maple	Graphite	3150-091-443	3150-095-443
Wild Cherry	Graphite	3150-091-446	3150-095-446
Cayenne Maple	Graphite	3150-091-447	3150-095-447
Honey Maple	Graphite	3150-091-448	3150-095-448
Select Cherry	Graphite	3150-091-449	3150-095-449
Hard Rock Maple	Light Chocolate	3150-089-441	3150-087-441
Fine Oak	Light Chocolate	3150-089-442	3150-087-442
Port Maple	Light Chocolate	3150-089-443	3150-087-443
Wild Cherry	Light Chocolate	3150-089-446	3150-087-446
Cayenne Maple	Light Chocolate	3150-089-447	3150-087-447
Honey Maple	Light Chocolate	3150-089-448	3150-087-448
Select Cherry	Light Chocolate	3150-089-449	3150-087-449
<b>Tops Prior to 2/1/2005 (Available as Service Parts Only)</b>			
Hearth Oak	Pewter	3150-092-444	3150-094-444
Royal Maple	Pewter	3150-092-445	3150-094-445
Hearth Oak	Coffee	3150-090-444	3150-093-444
Royal Maple	Coffee	3150-090-445	3150-093-445
Hearth Oak	Graphite	3150-091-444	3150-095-444
Royal Maple	Graphite	3150-091-445	3150-095-445

[Return To Table of Contents](#)

# Gas Spring

---



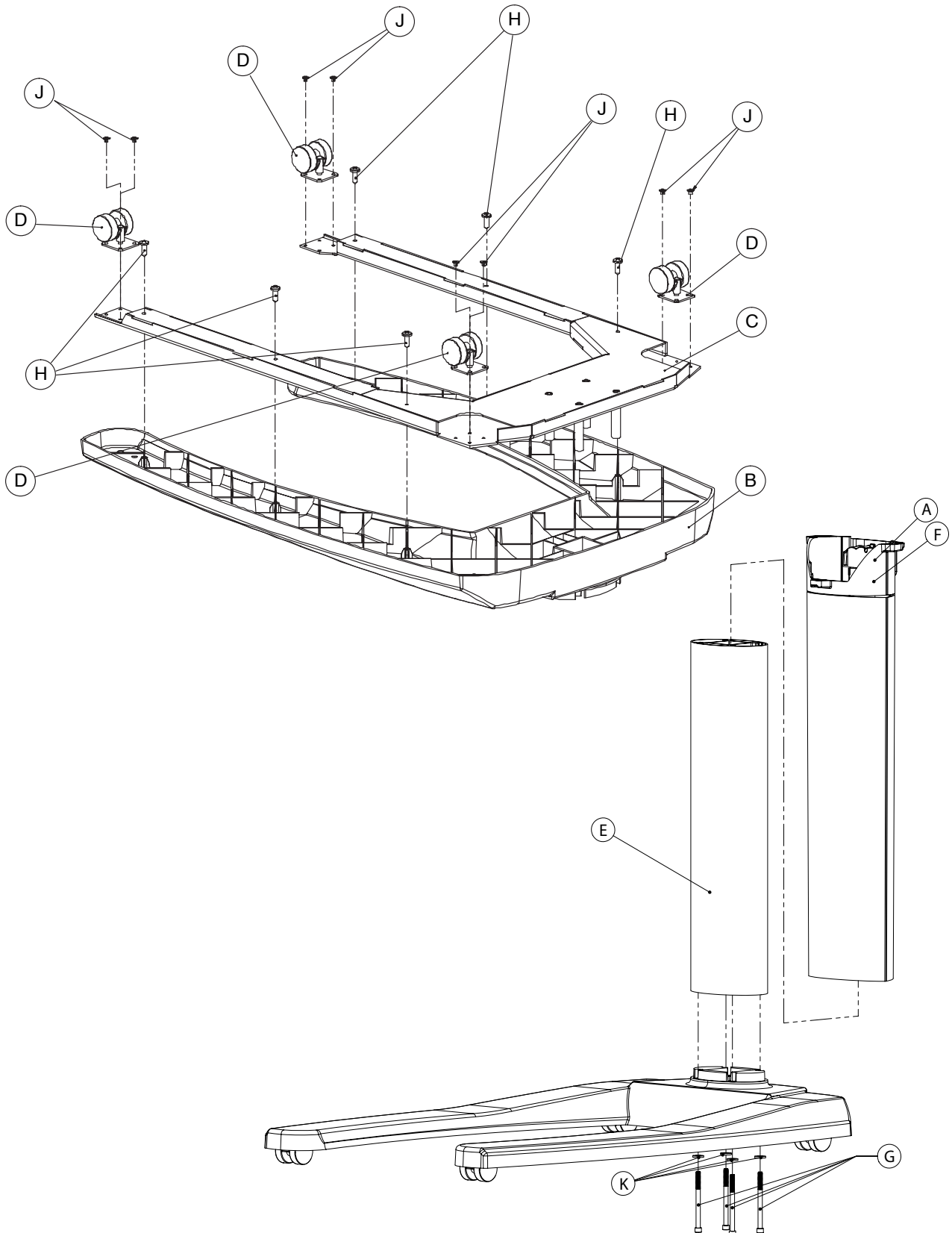
Gas Spring Type	Part Number
Low Pressure (Single Top)	3150-010-490
Mid Pressure (Single Top with Vanity)	3150-010-491
High Pressure (Split Top)	3150-010-492

## NOTE

For those units installed with the Optional Storage Compartment, refer to [page 32](#) for Gas Spring part numbers.

# Base Assembly

For Reference Only: Part Number 3150-001-000



[Return To Table of Contents](#)

# Base Assembly

---

Item	Part No.	Part Name	Qty.
A	3150-002-205	Lift Handle	1
B	(see table below)	Base Cover	1
C	3150-001-105	Base Weldment	1
D	3150-001-200	Casters	4
E	3150-002-100	Lower Column	1
F	(see table below)	Upper Column	1
G	3150-001-222	1/4"-20 x 3-1/4" Screw	4
H	0023-116-000	Phillips Pan Head Screw	6
J	0025-122-000	Dome Head PopvRivet	8
K	0011-002-000	Flat Washer	4

**B**

Base Cover Color	Part Number
Pewter	3150-001-190
Coffee	3150-001-191
Graphite	3150-001-192
Light Chocolate	3150-001-193

**F**

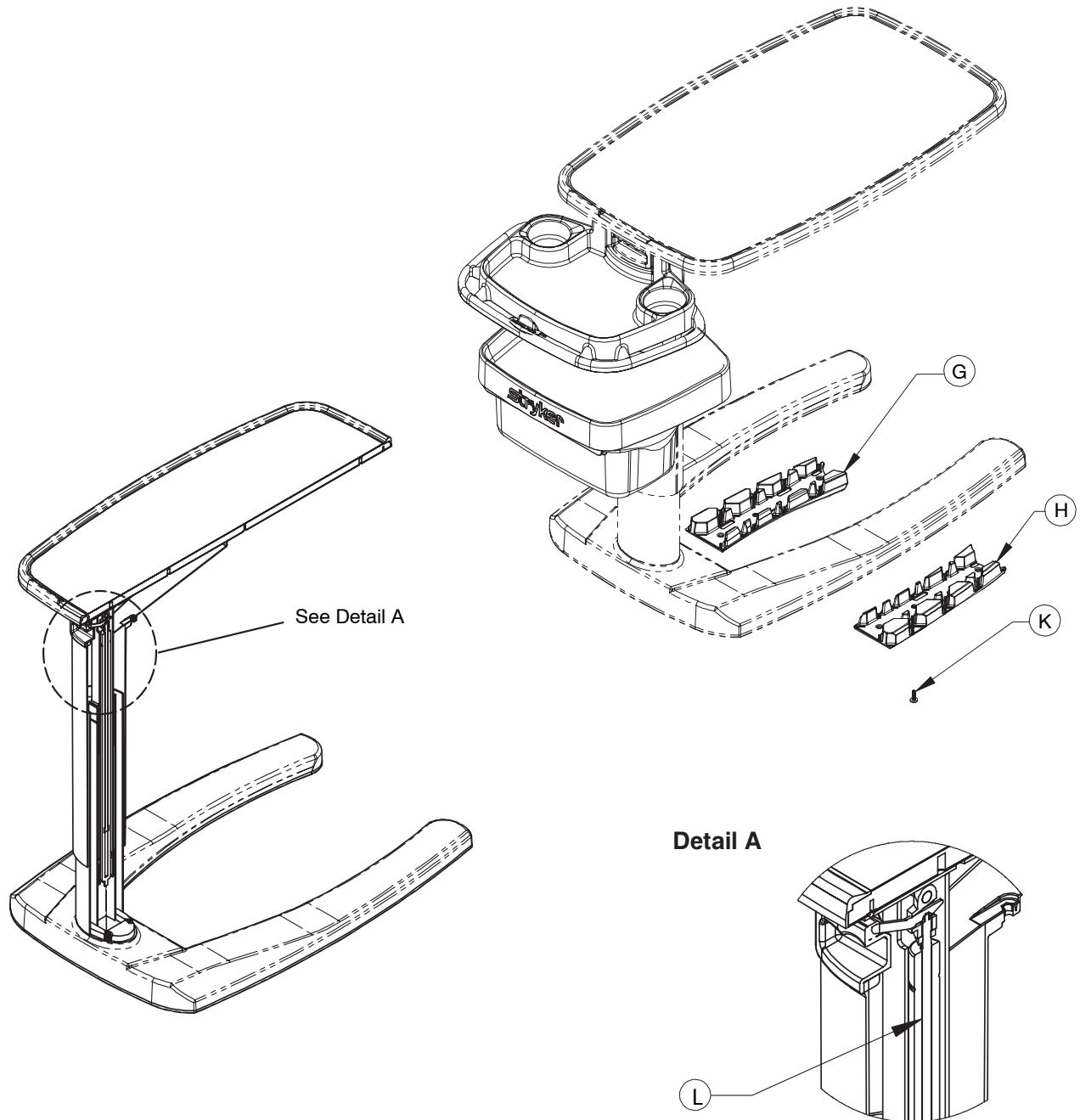
Upper Column Color	Part Number
Pewter	3150-002-290
Coffee	3150-002-291
Graphite	3150-002-292
Light Chocolate	3150-002-293

# Optional Storage Compartment

Kit options are available in four colors as shown in the table below.

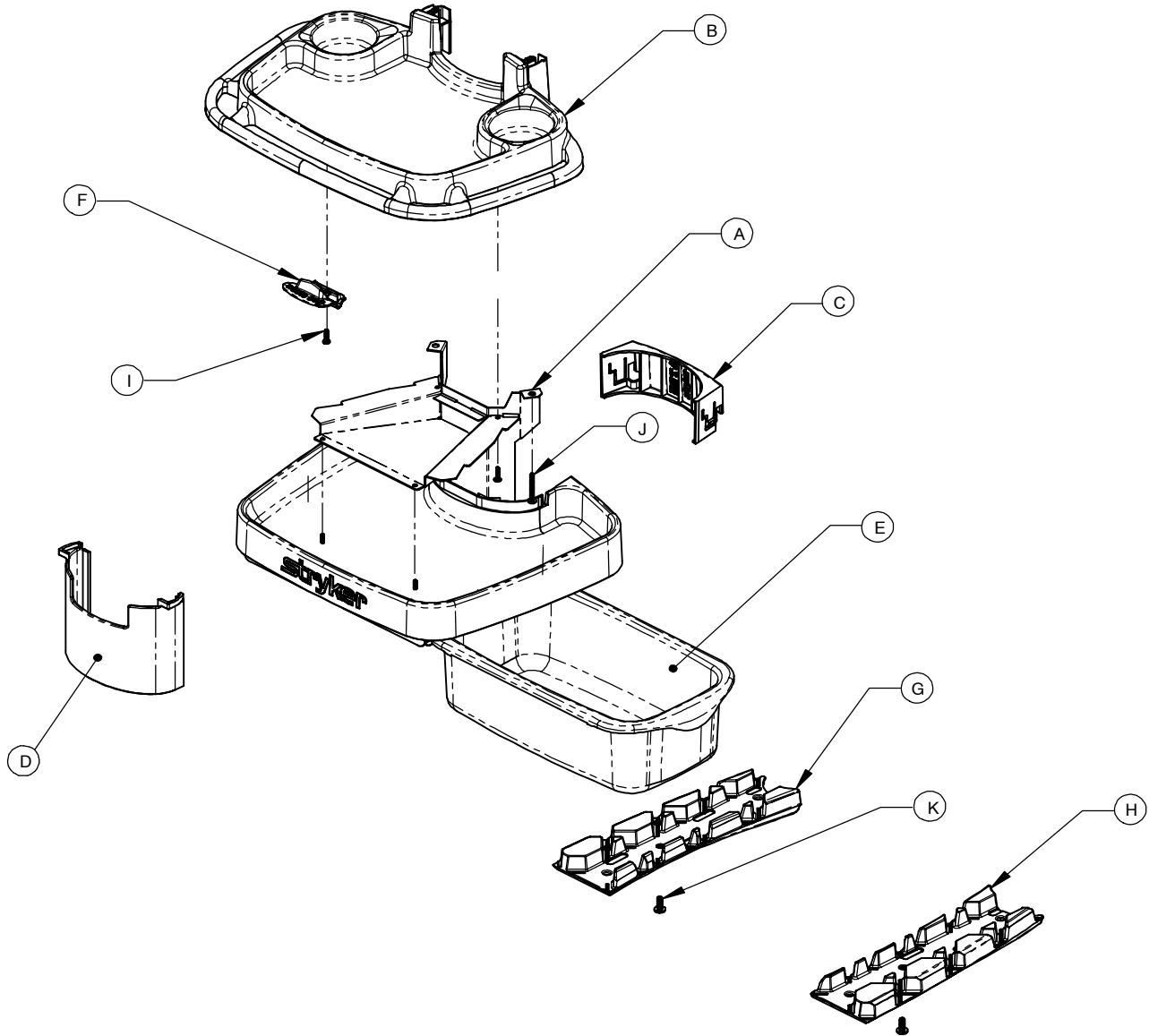
Table Type	Pewter	Coffee	Graphite	Light Chocolate
Single Top without Vanity	3151-095-190	3151-095-191	3151-095-192	3151-095-193
Single Top with Vanity	3151-096-190	3151-096-191	3151-096-192	3151-096-193
Split Top	3151-097-190	3151-097-191	3151-097-192	3151-097-193

For Reference Only: Part Number 3151-050-002



[Return To Table of Contents](#)

# Optional Storage Compartment



Item	Part No.	Part Name	Qty.
A	(see page 33)	Frame Assembly	1
B	(see page 33)	Top Shelf	1
C	(see page 33)	Upper Column Clamp	1
D	(see page 33)	Upper Column Cover	1
E	3151-050-600	Storage Bin	1
F	(see page 33)	Bag Clip	1
G	3151-050-807	Leg Ballast, Left	1
H	3151-050-809	Leg Ballast, Right	1
I	0023-116-000	Hi-Lo Screw	5
J	0004-633-000	Machine Screw	2
K	0007-065-000	Truss Head Screw	2
L	3151-002-101	Gas Spring, Single Top without Vanity	1
	3151-002-102	Gas Spring, Single Top with Vanity	1
	3151-002-103	Gas Spring, Split Top	1

[Return To Table of Contents](#)



# Optional Storage Compartment

---

## COLOR OPTIONS

Item	Description	Qty.	Pewter	Coffee	Graphite	Light Chocolate
(A)	Frame Assembly	1	3151-050-390	3151-050-391	3151-050-392	3151-050-393
(B)	Top Shelf	1	3151-050-190	3151-050-191	3151-050-192	3151-050-193
(C)	Column Clamp	1	3151-050-490	3151-050-491	3151-050-492	3151-050-493
(D)	Column Cover	1	3151-050-790	3151-050-791	3151-050-792	3151-050-793
(F)	Bag Clip	1	3151-050-590	3151-050-591	3151-050-592	3151-050-593

[Return To Table of Contents](#)

# Warranty

---

Stryker Medical stands behind the craftsmanship of our products. Providing our customers quality products is our mission, and we pledge to do everything we can to quickly resolve any problems encountered within the terms of the warranties listed below. These warranties apply only to products manufactured after January 1, 2008.

## ONE YEAR WARRANTY

Stryker warrants the following products for one year under normal use and proper care. For one year from date of shipment, Stryker will repair or, at our option, replace defective merchandise free of charge (parts, labor and shipping included).

- Tru-Fit® Overbed Tables.
- Bedside Stands (\*Note: LIFETIME WARRANTY on metal drawer frames and glides).
- Maternity Furniture.
- Flexsteel Hospital Recliner.

The One Year warranty listed above are void in cases of modifications, misuse, improper assembly or maintenance, accidents, damage caused by a carrier other than Stryker Medical, and the use of customer's own material.

Stryker makes no other warranty or representation, either expressed or implied, except as set forth herein. There is no warranty of merchantability and there are no warranties of fitness for any particular purpose. In no event shall Stryker be liable hereunder for incidental or consequential damages arising from or in any manner related to sales or use of any such equipment.

## TO OBTAIN PARTS AND SERVICE

Stryker products are supported by a nationwide network of dedicated Stryker Field Service Representatives. These representatives are factory trained, available locally, and carry a substantial spare parts inventory to minimize repair time. Simply call your local representative, or call Stryker Customer Service USA at 1-800-327-0770.

## RETURN AUTHORIZATION

Merchandise cannot be returned without approval from the Stryker Customer Service Department. An authorization number will be provided which must be printed on the returned merchandise. Stryker reserves the right to charge shipping and restocking fees on returned items. **Special, modified, or discontinued, items not subject to return.**

## DAMAGED MERCHANDISE

ICC Regulations require that claims for damaged merchandise must be made with the carrier within fifteen (15) days of receipt of merchandise. **Do not accept damaged shipments unless such damage is noted on the delivery receipt at the time of receipt.** Upon prompt notification, Stryker will file a freight claim with the appropriate carrier for damages incurred. Claim will be limited in amount to the actual replacement cost. In the event that this information is not received by Stryker within the fifteen (15) day period following the delivery of the merchandise, or the damage was not noted on the delivery receipt at the time of receipt, the customer will be responsible for payment of the original invoice in full. Claims for any short shipment must be made within thirty (30) days of invoice.

## INTERNATIONAL WARRANTY CLAUSE

This warranty reflects U.S. domestic policy. Warranty outside the U.S. may vary by country. Please contact your local Stryker Medical representative for additional information.

# Warranty

## SERVICE CONTRACT COVERAGE

Stryker has developed a comprehensive program of service contract options designed to keep your equipment operating at peak performance at the same time it eliminates unexpected costs. We recommend that these programs be activated before the expiration of the new product warranty to eliminate the potential of additional equipment upgrade charges.

### A Service Contract helps to:

- Ensure equipment reliability
- Stabilize maintenance budgets
- Diminish downtime
- Establish documentation for JCAHO
- Increase product life
- Enhance trade-in value
- Address risk management and safety

## SERVICE CONTRACT PROGRAMS

Stryker offers the following service contract programs:

Service Agreement Options *	Gold	Silver	Parts	Labor	PM
Annually scheduled preventative maintenance	X				X
All parts	X	X	X		
All labor and travel	X	X		X	
Unlimited emergency service calls	X	X		X	
Priority one contact: two hour phone response	X	X	X	X	
Most repairs completed within 3 days	X	X		X	
JCAHO documentation	X	X		X	X
On-site record of PM & emergency service	X				X
Factory-trained Stryker service technician	X	X		X	X
Stryker authorized parts used	X	X	X	X	X
Service during regular business hours (8-5)	X	X	X	X	X

\* Does not include maintenance due to abuse or for any disposable items. Stryker reserves the right to change options without notice.

Stryker Medical also offers personalized service contracts.  
Pricing is determined by age, location, model and condition of product.

**For more information on our service contracts,  
please call your local representative.**

[Return To Table of Contents](#)



Stryker Medical  
3800 E. Centre Ave.,  
Portage, Michigan  
49002

EC	REP
----	-----

**European Representative**  
Stryker France  
ZAC Satolas Green Pusignan  
Av. De Satolas Green  
69881 MEYZIEU Cedex  
France

**stryker**<sup>®</sup>