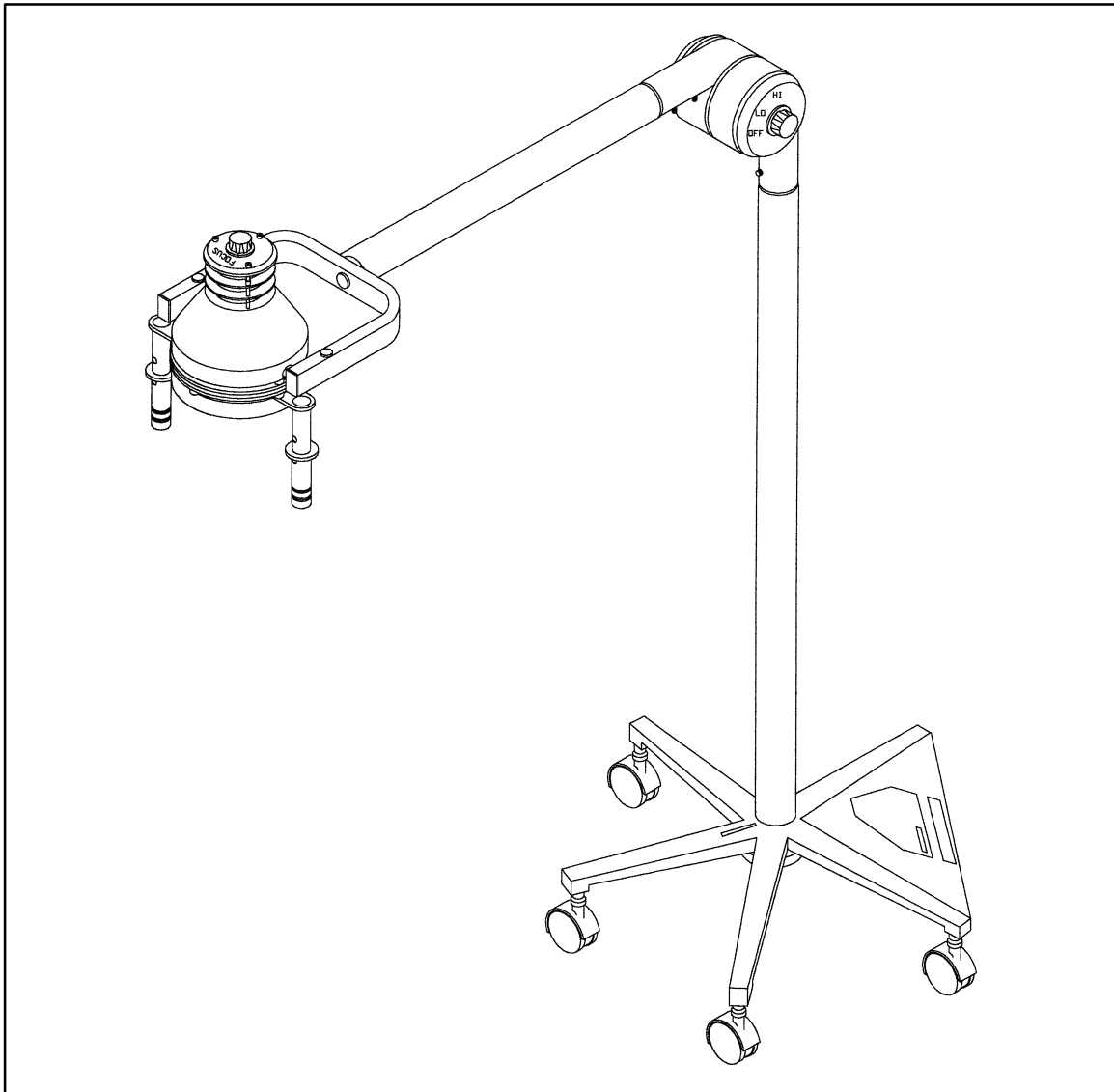

IMPORTANT
File in your
maintenance
records

stryker[®]
Medical



2112 Floor Light

OPERATIONS/MAINTENANCE MANUAL

For Parts or Technical Assistance
1-800-327-0770

Table of Contents

Assembly Instructions	2
Counterweight Assembly Illustration	3
Operating Instructions	
Hi/Lo Intensity Control	4
Focus Control	4
Removable Positioning Handles	4
Spare Bulb And Fuse Storage	4
Maintenance Instructions	
Counterweight Assembly Cover	5
Bulb Replacement	5
Fuse Replacement	5
Electrical Schematic	6
Assembly Drawings and Parts Lists	
Floor Light Final Assembly	7
Base Assembly with Casters	8
Counterweight Assembly	9
Base Cover Assembly	10
Head/Arm Post Assembly	11
Head/Arm Assembly	12
Focus Adjustment Ring Assembly	13
Focus Assembly	14
Lens Assembly	15
Handle Assembly	16
Arm Assembly	17
Yoke Assembly	18
Tension Spring Assembly	19
Hub Assembly	20
Switch Cover Assembly	21
Rotary Switch Assembly	22
Post Assembly	23
Replacement Parts List	24
Limited Warranty	
Obtaining Parts and Service	25
Supplemental Warranty Coverage	25
Return Authorization	26
Freight Damage Claims	26

Assembly Instructions

The Adel Minor Surgery Light is packed in two shipping cartons and should be assembled using the following instructions:

NOTE

Assemble the light on soft, protective material to avoid marring the finish of the light.

Required Tools:

Phillips Screwdriver

3/4" Wrench

Hammer

Assembly Instructions:

1. Remove the base, counterweight assembly and head/post assembly from their cartons. Locate the pinstripe tape on the post (tapered end) and on the base next to the center hole.
2. Lay the head/post assembly on the floor with the light head above the post (pinstripe on top). Insert the end of the post into the base by threading the wires through the base center hole. Rotate the post until the pinstripe tape on the base and post are aligned. Tap the bottom of base with a hammer to secure it on the post.
3. Attach the counterweight assembly by screwing the 1/2" bolt into the end of the post. The counterweight assembly hangs between the two bottom legs of the base opposite the pinstripe tape. Route the electric wires past the 1/2" bolt into the counterweight assembly area. Support the counterweight assembly with one hand while turning the 1/2" bolt.

NOTE

The tab on the counterweight assembly must enter the center hole of the base.

4. Ensure the pinstripe tape on the head/post assembly and base are still in alignment. Remove the tape.
5. Place the light in the upright position.

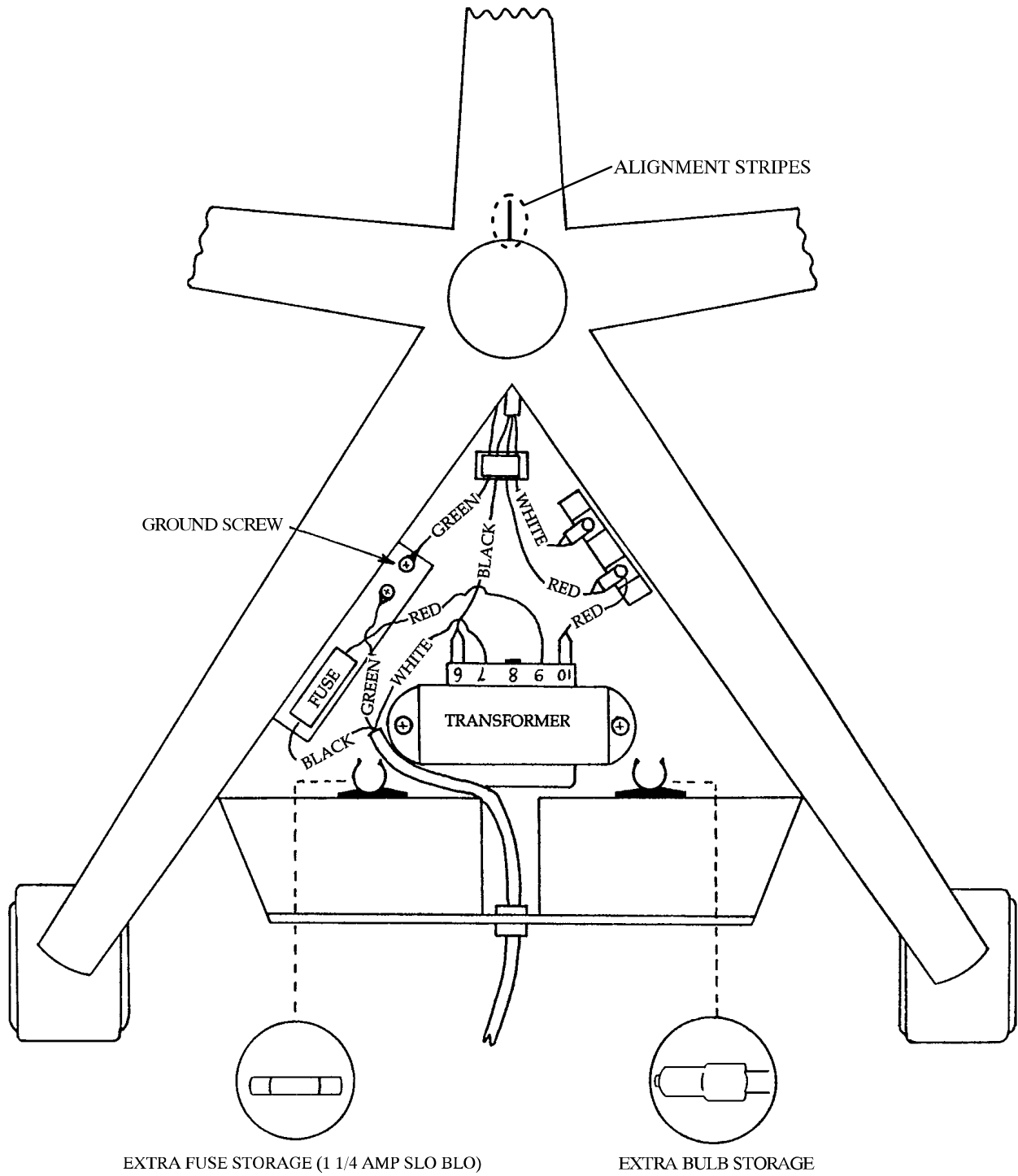
Counterweight Assembly Instructions (see counterweight assembly illustration on page 3):

1. Remove the ground screw and the two washers from the left side of the counterweight assembly. Connect the single green ground wire using the following order: screw, washer, wire terminal, washer.
2. Attach the black wire to the tab marked #6 on the transformer.
3. Attach the red wire to the terminal strip tab with the red wire from the transformer.
4. Attach the white wire to the terminal strip *opposite* the red wires.

Transformer Cover and Positioning Handles Assembly Instructions:

1. Slide the transformer cover under the edge of the leg base and snap it into position by applying pressure on the outer edge. Fasten it with the #8-32 screw provided. If the cover does not slide under the edge, loosen the bolt at the end of the post, slide the cover under the edge, and re-tighten the bolt.
2. Install the positioning handles into the handle sockets on the light head until the spring loaded button snaps into the locking position.

Counterweight Assembly



Operating Instructions

HI/LO INTENSITY CONTROL

A single knob located on one side of the arm-to-post joint turns the light on and adjusts the light intensity to a low or high level. Select the intensity that provides the best tissue discrimination and minimum eye strain.

FOCUS CONTROL

The knob located on the back of the light head provides an adjustment to obtain an optimum area of shadowless illumination. Readjustment may be required when the distance from the tissue surface changes. The focus knob provides full adjustment in 1 1/2 turns.

CAUTION

Do not force the focus knob after it stops turning. Damage to the focusing mechanism may result if the knob is turned more than 1 1/2 turns.

REMOVABLE POSITIONING HANDLES

A positioning handle is located on each side of the light head. The handles can be easily removed by pressing the spring loaded button and pulling away from the light head. The handles can be autoclaved and reinstalled using sterile techniques.

Reorder number (set of 2) - 8815-011-100

SPARE BULB AND FUSE STORAGE

An extra bulb and fuse are located in the counterweight assembly at the base of the floor light.

Bulb reorder number - 8815-004-500

Fuse reorder number - 8815-003-200

See page 5 for replacement procedures.

Maintenance Instructions

COUNTERWEIGHT ASSEMBLY COVER

WARNING

Unplug the power cord before removing the counterweight assembly cover or personal injury could result.

For both fuse and bulb replacement, it is necessary to remove the triangular counterweight assembly cover at the base of the light.

To remove the cover: Remove the #8-32 screw. Slightly loosen the 1/2" bolt at the bottom of the post and pull the counterweight assembly cover out away from the center post. This uncovers the transformer, fuse holder, extra fuse and extra bulb and provides access to some of the wiring.

When replacing the counterweight assembly cover, DO NOT over-tighten the 1/2" bolt. Light but firm pressure should be applied to hold the cover up against the lip of the leg base.

BULB REPLACEMENT

WARNING

Turn source power off before replacing the bulb or personal injury could result.

1. Remove the front shroud.
2. Remove the lens from the lens clips. Be careful not to over-bend the clips when removing the lens. If the clips do get over-bent, be sure to straighten them before reinstalling the lens.
3. Be sure the burned out bulb is cool, then remove it.
4. Install the new bulb, using a clean cloth to handle the bulb. Do not touch the bulb with your bare fingers because skin oils cause premature failure of the bulb. Do not move the bulb from side-to-side while installing it; push it straight in.
5. Replace the lens, making sure all four clips make secure contact with the lens.
6. Replace the shroud.
7. Turn the power back on.
8. Turn light on to HI to check the light's performance.

Bulb reorder number - 8815-035-800

FUSE REPLACEMENT

WARNING

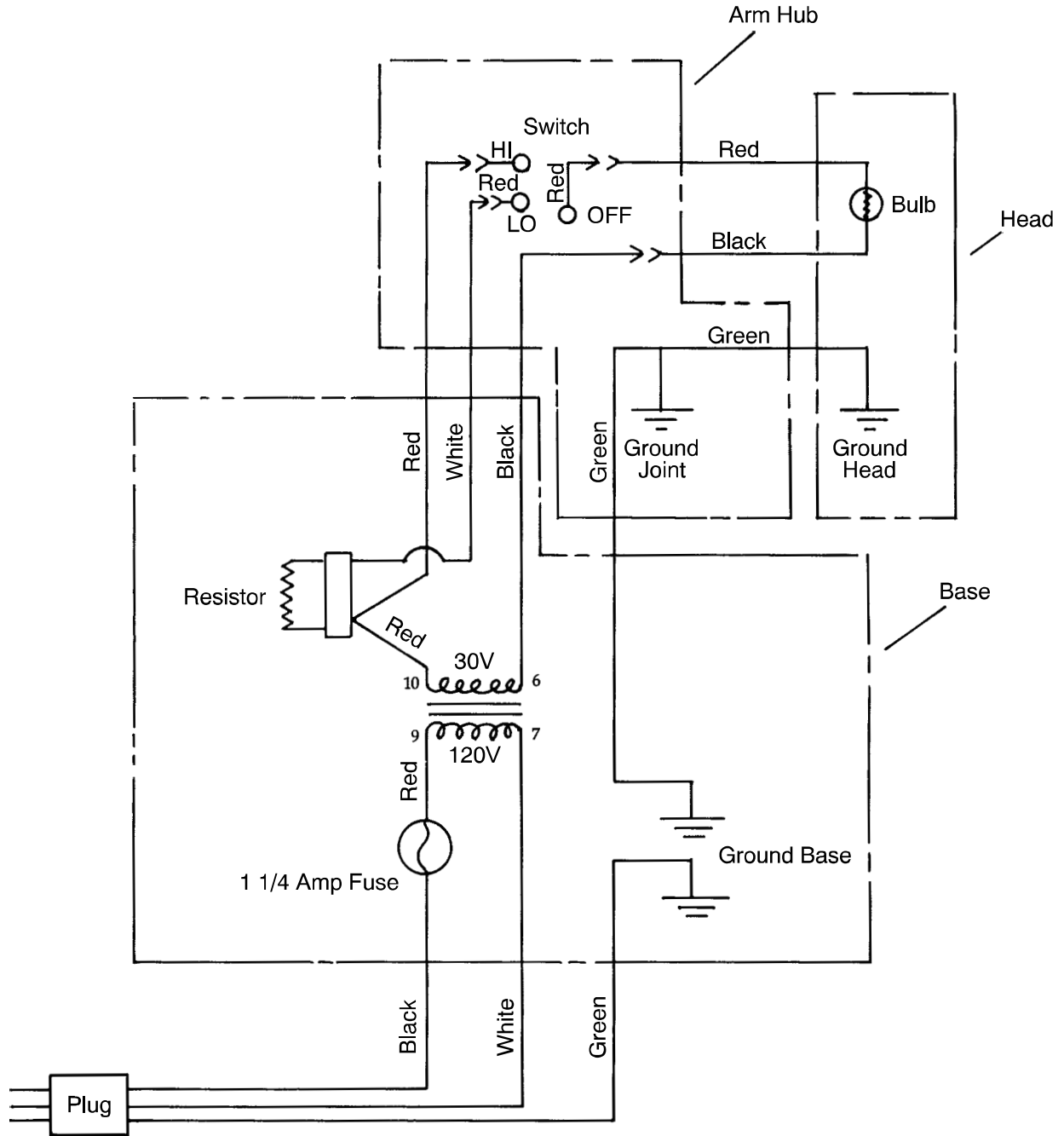
Turn the source power off before replacing the fuse or personal injury could result.

The spare fuse is mounted next to the transformer in the counterweight assembly at the base of the floor light (see counterweight assembly illustration on page 3).

Remove the blown fuse from the fuse holder and replace it with the spare fuse.

Fuse reorder number - 8815-003-200

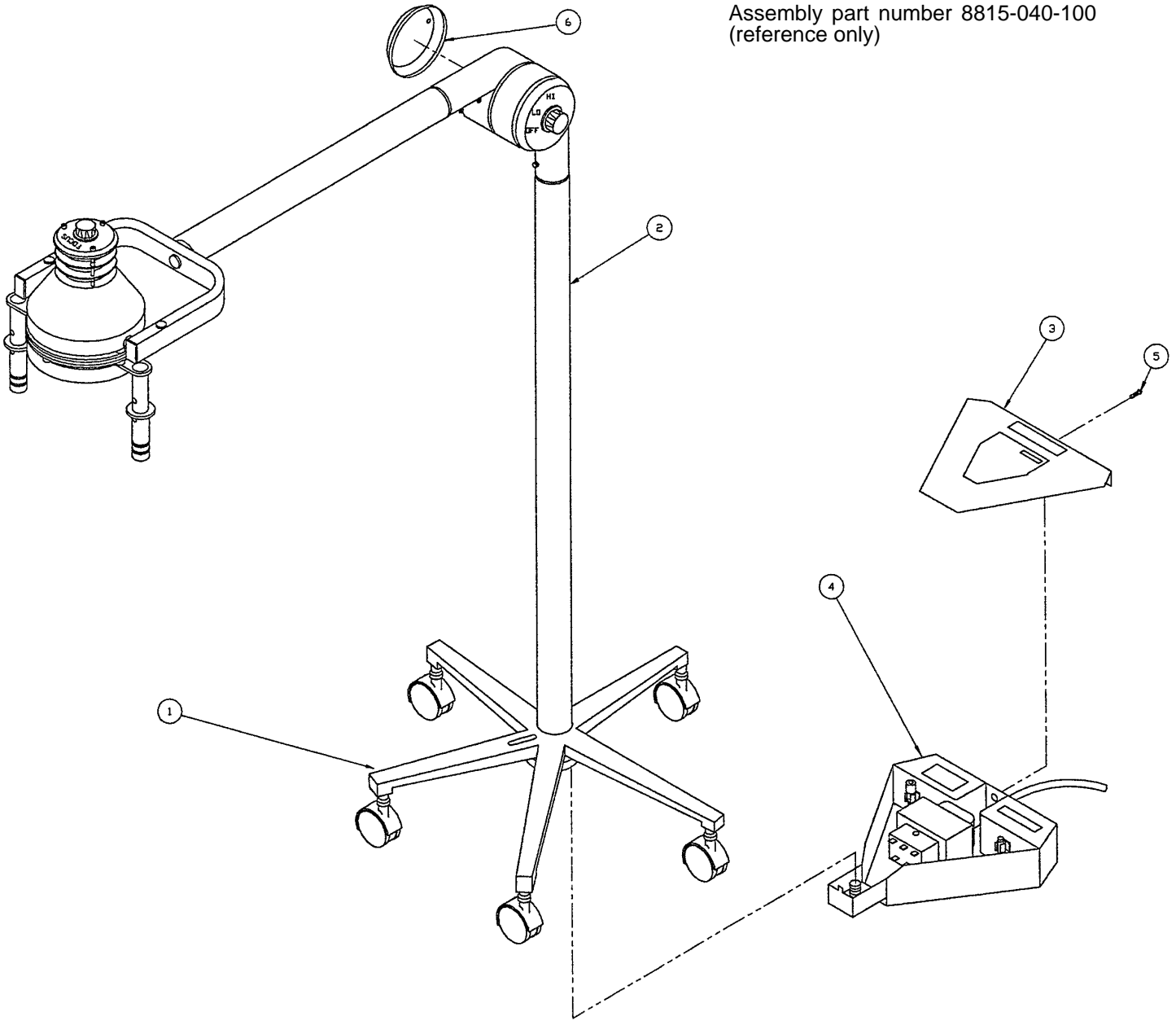
Electrical Schematic



**120 VOLTS, 60 Hz, 1 1/4 AMP RATING
105 TO 135 VAC OPERATING RANGE**

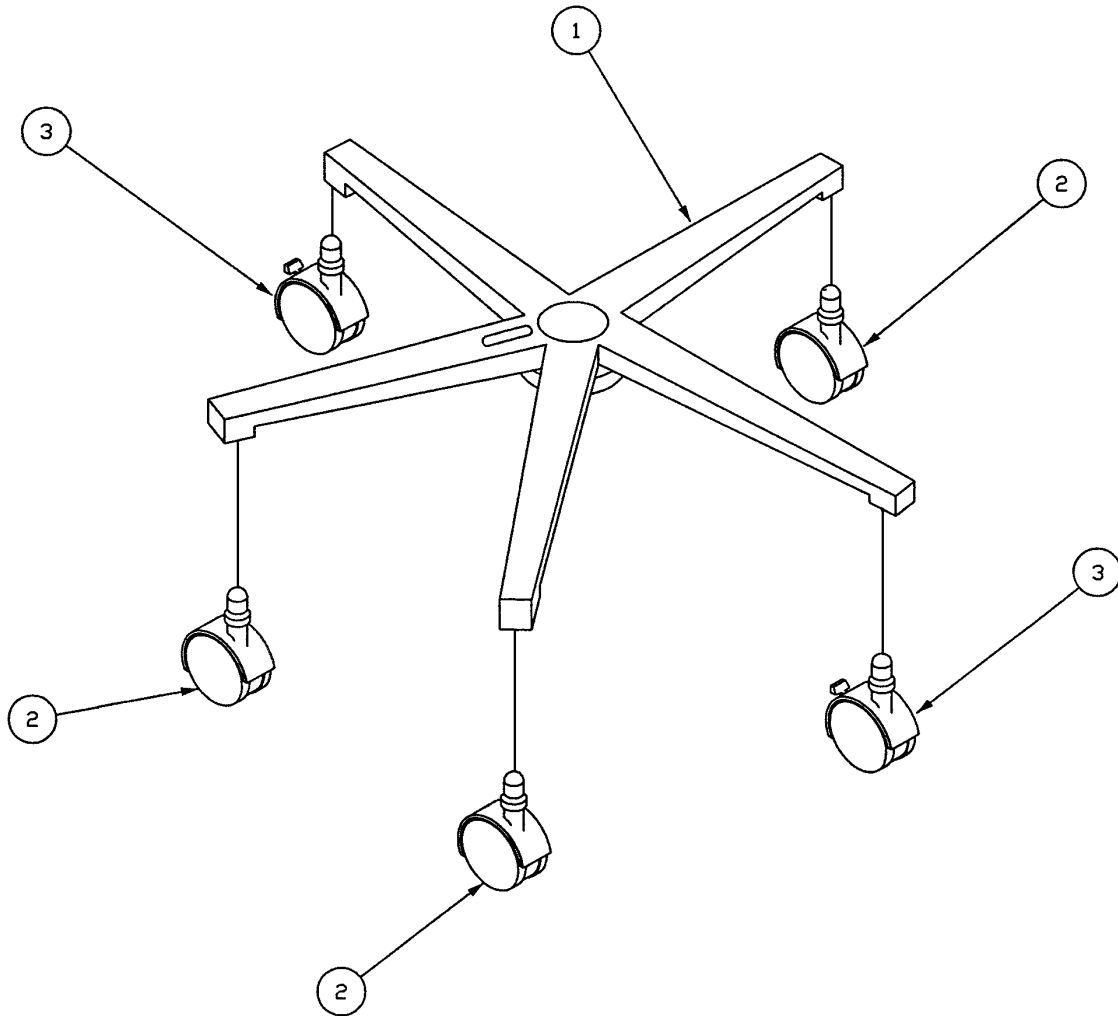
Floor Light Final Assembly

Assembly part number 8815-040-100
(reference only)



Item	Part No.	Part Name	Qty.
1	(page 8)	Base Assembly with Casters	1
2	(page 11)	Head/Arm Post Assembly	1
3	(page 10)	Base Cover Assembly	1
4	(page 9)	Counterweight Assembly	1
5	8815-005-700	Phillips Hd. Screw	1
6	8815-040-500	Hub Cover	1

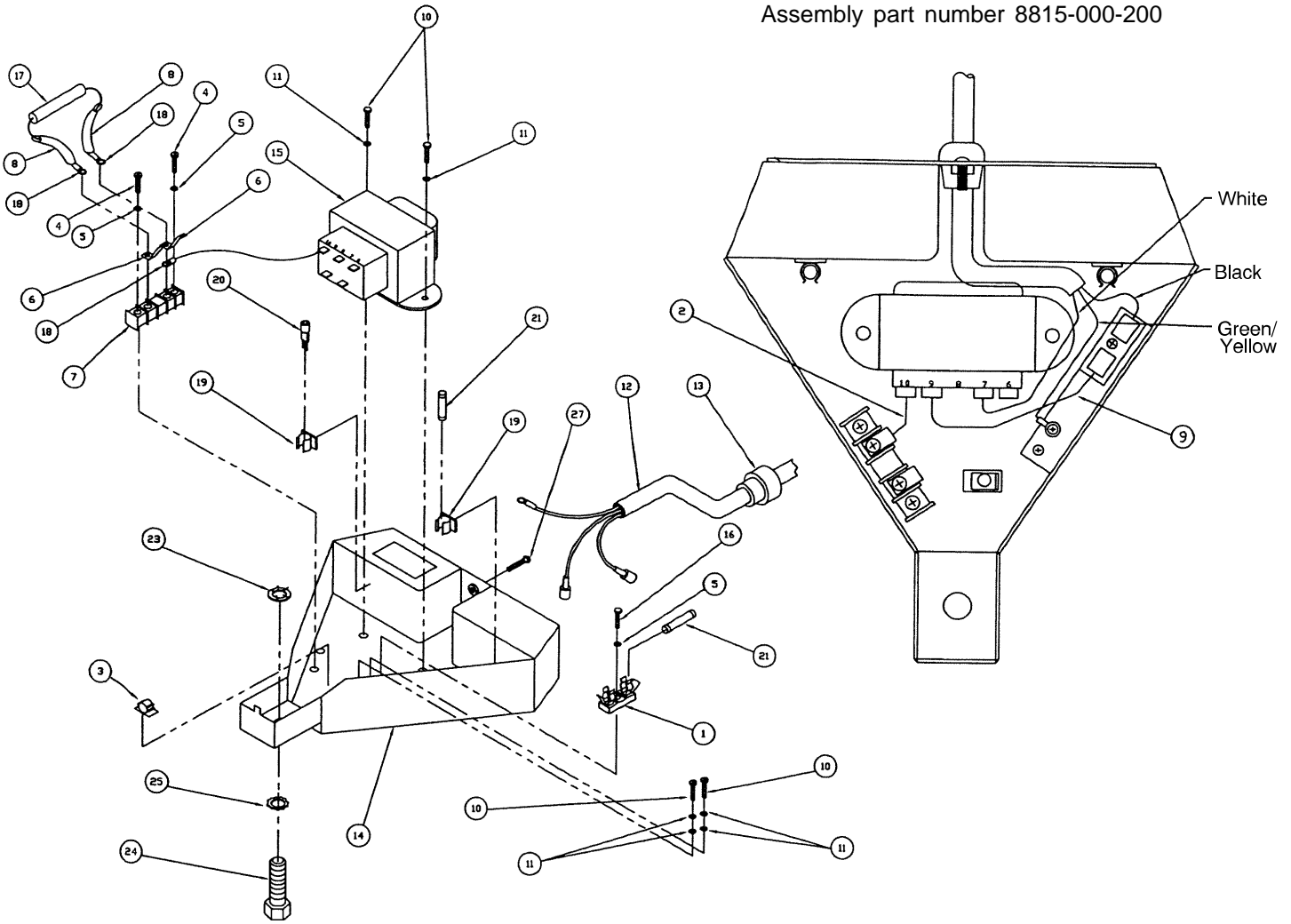
8815-040-200 Base Assembly with Casters



Item	Part No.	Part Name	Qty.
1	8815-042-800	Lamp Base	1
2	8801-790-000	Caster	3
3	8815-020-102	Locking Caster	2

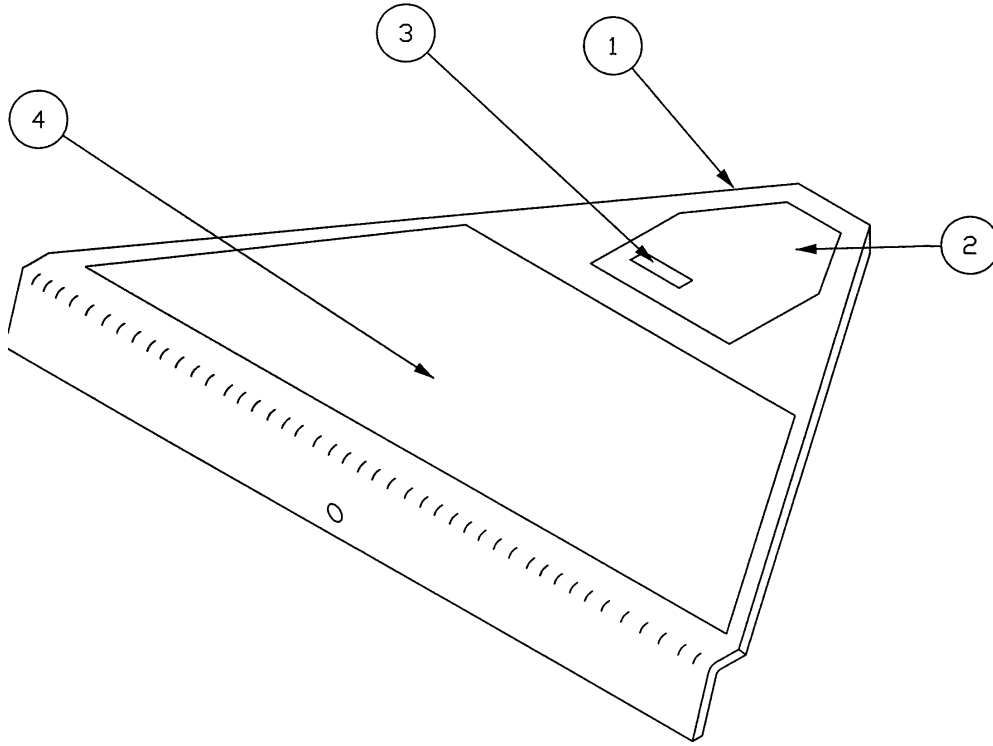
Counterweight Assembly

Assembly part number 8815-000-200



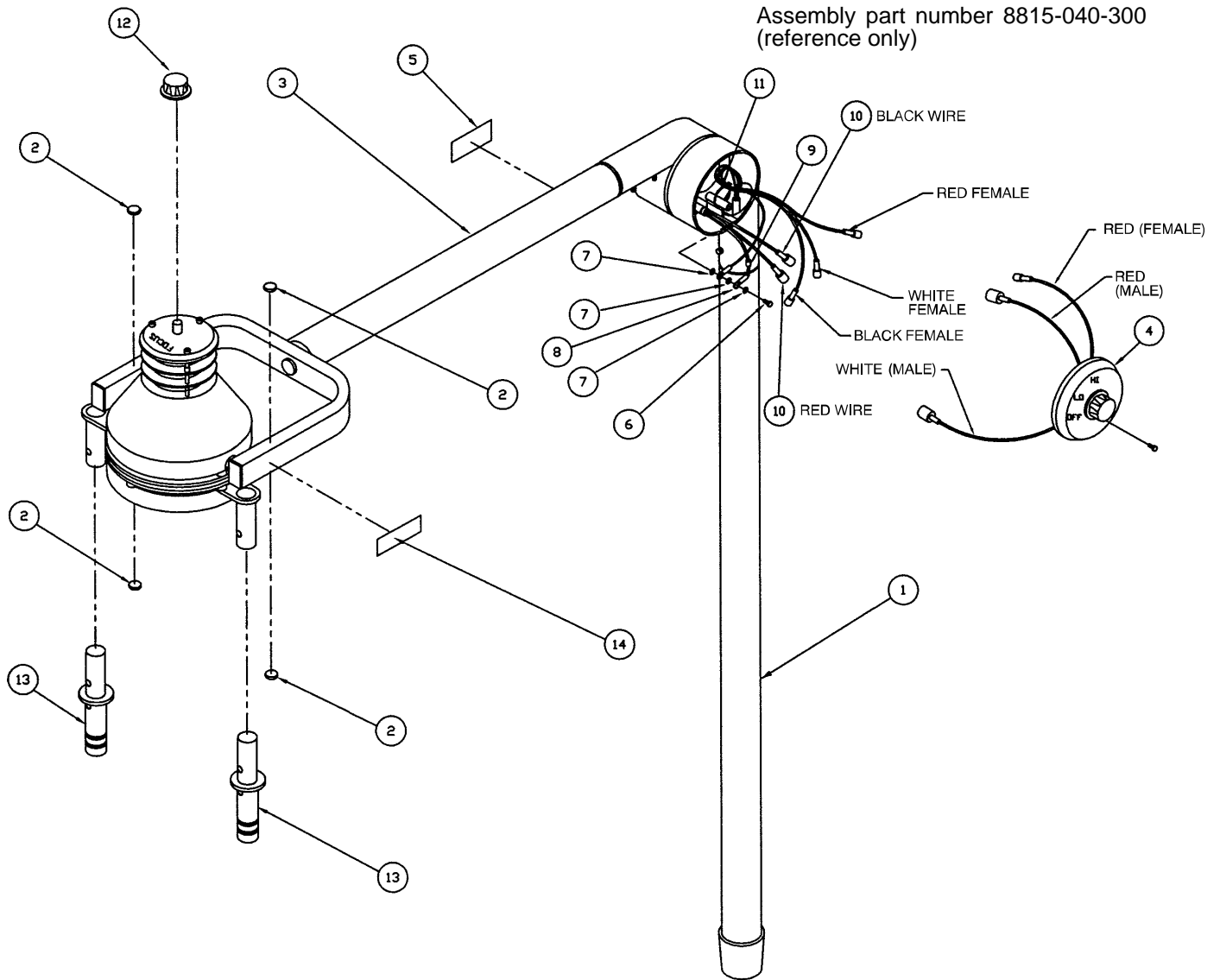
Item	Part No.	Part Name	Qty.	Item	Part No.	Part Name	Qty.
1	0059-154-000	Fuse Block	1	14	8815-001-300	Counterweight	1
2	1502-080-002	Red Hook-Up Wire	35"	15	8815-010-500	Transformer	1
3	8815-001-100	Wire Anchor Clip	1	16	8815-002-200	Pan Hd. Screw	1
4	8815-007-000	Phillips Hd. Screw	2	17	8815-004-800	Resistor	1
5	8815-005-500	Int. Tooth Lock Washer	3	18	8800-500-300	Ring Terminal	3
6	8815-010-300	Tab	2	19	8801-620-000	Clip	2
7	8815-009-600	Terminal Strip	1	20	8815-004-500	Exam Light Bulb	1
8	0034-202-000	Insulation Sleeve	3"	21	1502-001-003	1.25 Amp. Slo-Blo Fuse	2
9	1502-080-003	Red Hook-Up Wire	35"	23	8815-012-600	Push Nut	1
10	8815-012-700	Phillips Hd. Screw	4	24	8815-012-500	Hex Hd. Cap Screw	1
11	8815-005-600	Int. Tooth Lock Washer	6	25	8815-005-800	Ext. Tooth Lock Washer	1
12	8839-792-600	Power Cord	1	27	8815-005-700	Phillips Hd. Screw	1
13	8815-001-400	Strain Relief	1				

8815-040-400 Base Cover Assembly



Item	Part No.	Part Name	Qty.
1	8815-040-600	Counterweight Cover	1
2	8815-000-800	Light Serial No. Label	1
3	8800-840-700	Numerical Serial No. Label	1
4	1502-001-004	Caution Label	1

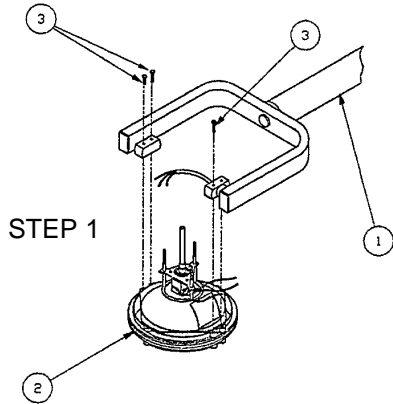
Head/Arm Post Assembly



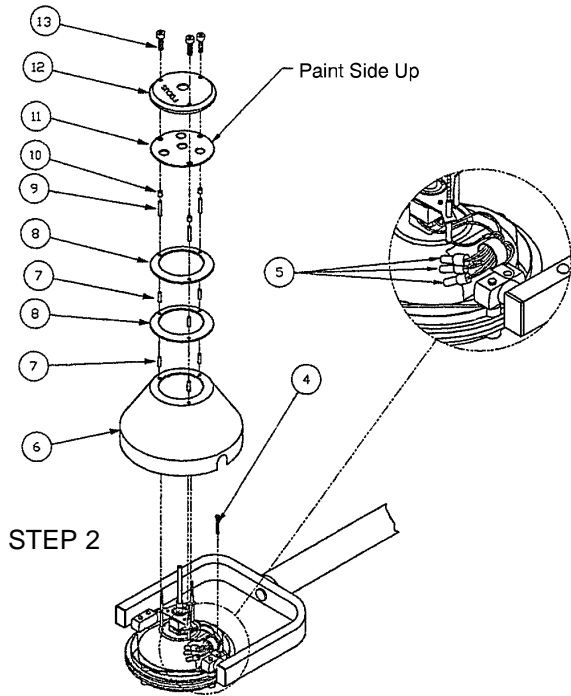
Item	Part No.	Part Name	Qty.
1	(page 23)	Light Post Assembly	1
2	8815-003-000	Clear Button Bumper	4
3	(page 12)	Head/Arm Assembly	1
4	(page 21)	Switch Cover Assembly	1
5	8800-840-600	Adel Label	1
6	8815-007-000	Phillips Head Screw	1
7	8815-005-500	Star Lock Washer	3
8	8800-500-300	Ring Terminal	1
9	8815-029-400	Green Ground Tape	1
10	8815-002-600	Male Connector	2
11	8815-025-600	Cable Tie	1
12	8815-011-400	Knob	1
13	(page 16)	Handle Assembly	2
14	1502-001-005	Burn Caution Label	1

Head/Arm Assembly

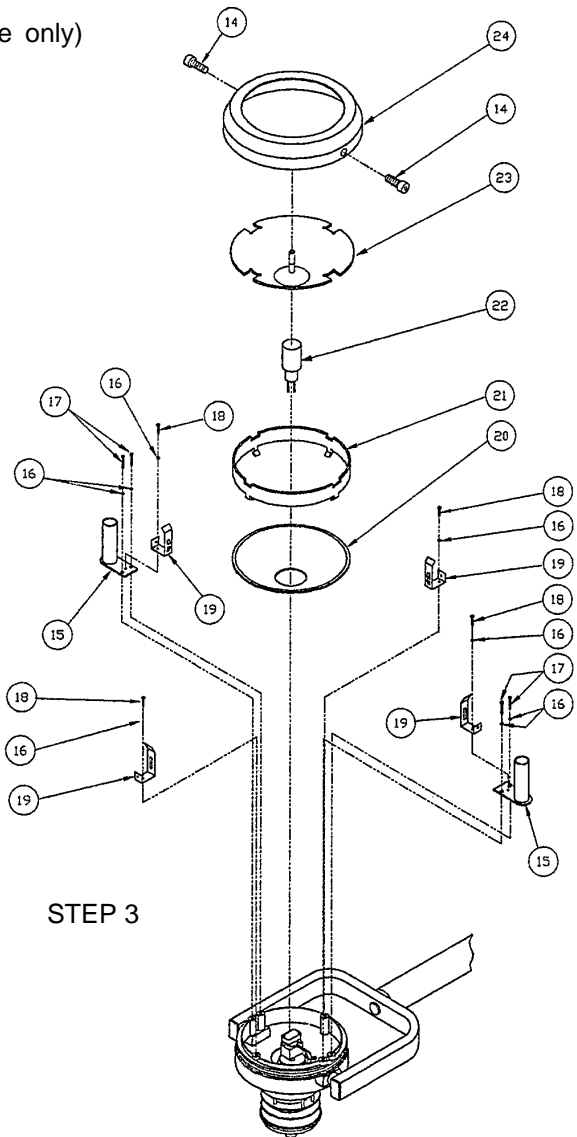
Assembly part number
8815-040-800 (reference only)



STEP 1



STEP 2

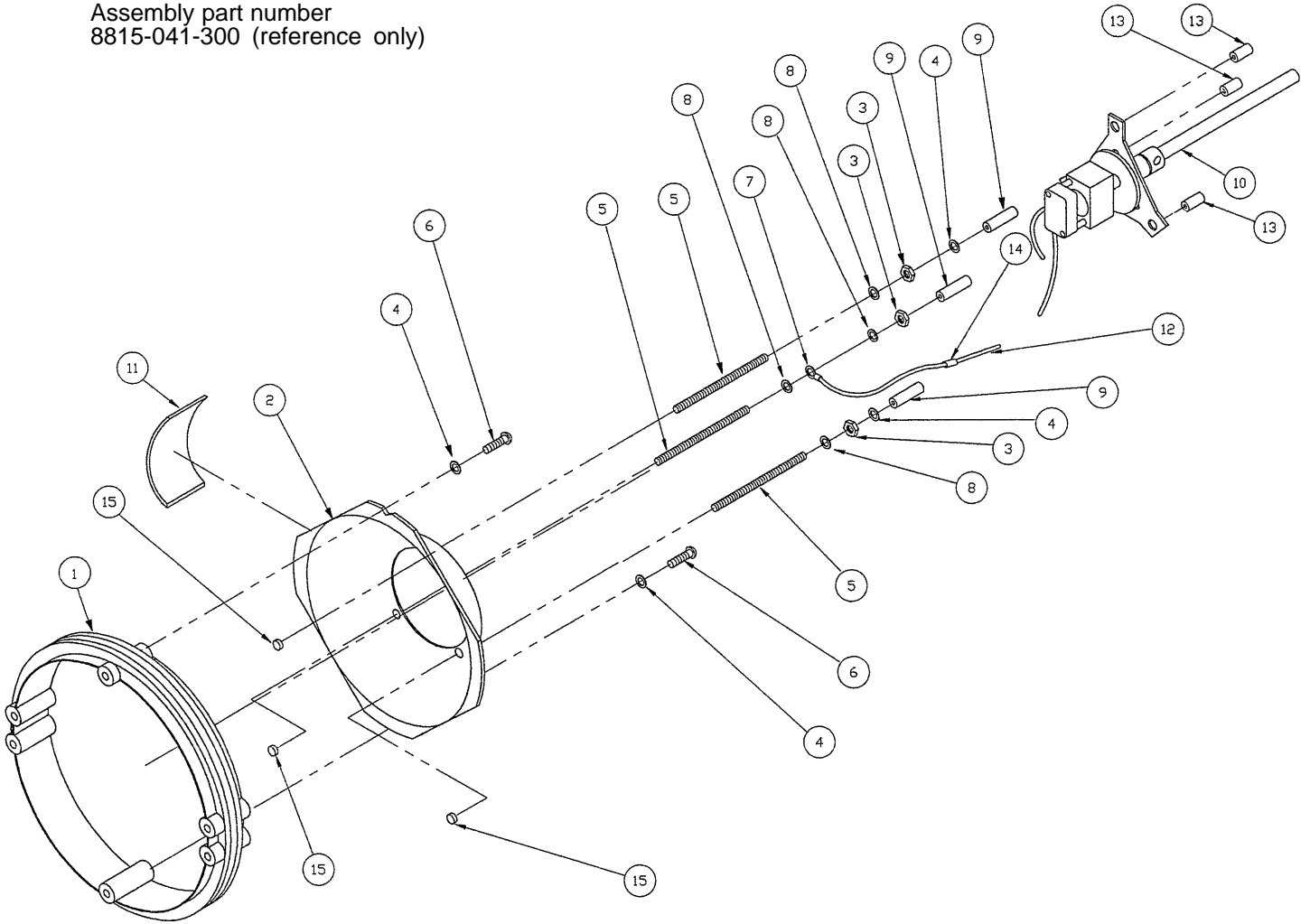


STEP 3

Item	Part No.	Part Name	Qty.	Item	Part No.	Part Name	Qty.
1	(page 17)	Light Arm Assembly	1	13	8815-008-900	Plastic Screw	3
2	(page 13)	Focus Adj. Ring Ass'y	1	14	8815-004-000	Thumb Screw Knob	2
3	8815-014-000	Phillips Hd. Screw	3	15	8815-041-800	Handle Mtg. Bracket	2
4	8815-018-400	Phillips Hd. Screw	1	16	8815-005-500	Int. Tooth Lock Washer	8
5	8815-019-200	Closed End Connector	3	17	8815-003-700	Hex Hd. Cap Screw	4
6	8815-041-400	Outer Housing	1	18	8815-007-000	Round Hd. Screw	4
7	8815-016-800	Stand Off	6	19	8815-028-000	Lens Clip	4
8	8815-041-500	Vent Ring	2	20	8815-009-800	Coated Mirror	1
9	8815-014-400	Round Threaded Spacer	3	21	8815-016-300	Front Heat Shield	1
10	8815-016-000	Spacer	3	22	8815-004-500	Bulb	1
11	8815-041-600	Cap Baffle	1	23	(page 15)	Lens Assembly	1
12	8815-042-500	Focus Cover	1	24	8815-041-900	Lens Mount Shroud	1

Focus Adjustment Ring Assembly

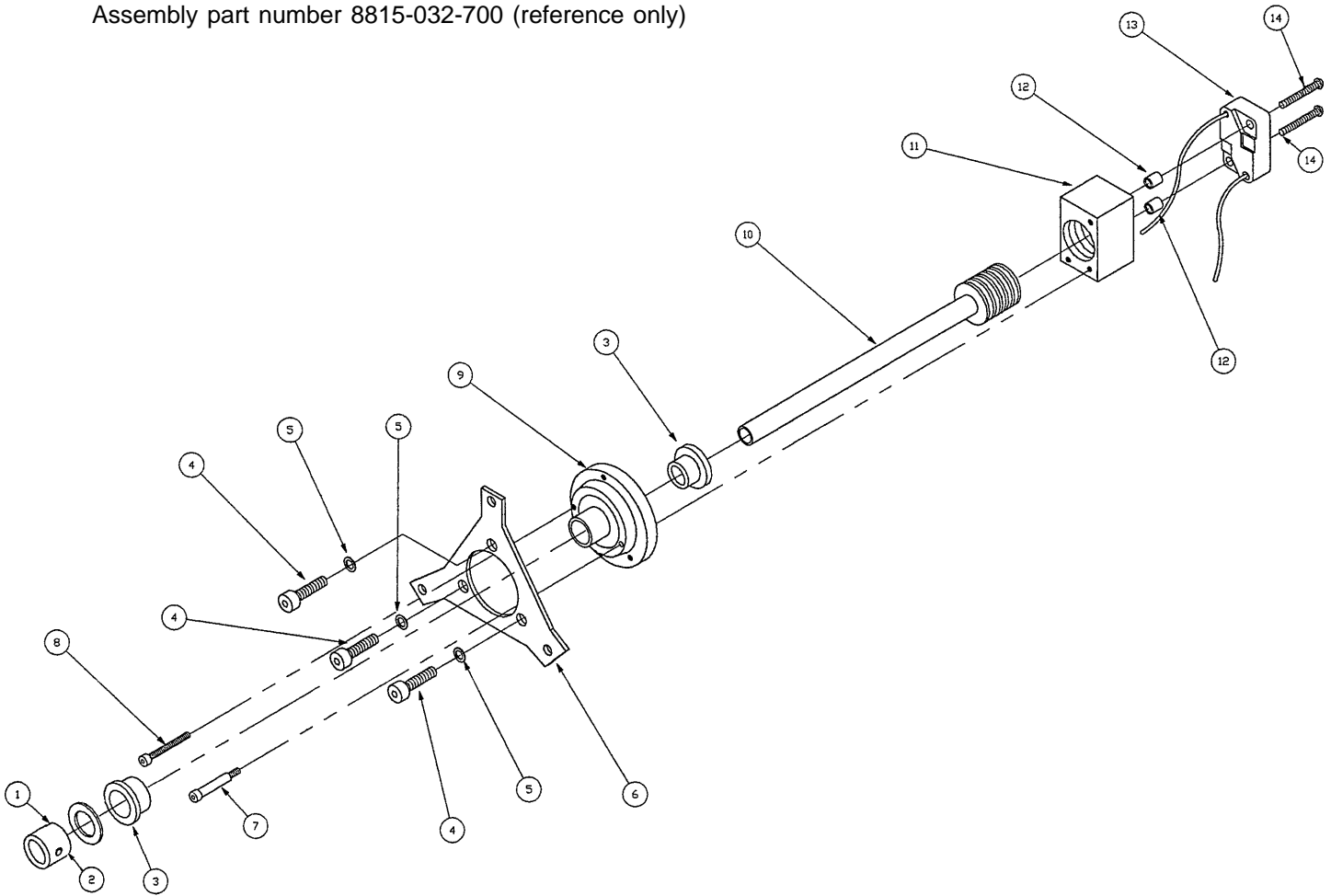
Assembly part number
8815-041-300 (reference only)



Item	Part No.	Part Name	Qty.
1	8815-042-200	Plastic Ring	1
2	8815-006-200	Inner Housing	1
3	8815-003-900	Hex Nut	3
4	8815-014-800	Flat Washer	4
5	8815-013-900	Stud	3
6	8815-007-000	Round Hd. Screw	2
7	8800-500-300	Ring Terminal	1
8	8815-005-500	Lock Washer	4
9	8815-009-500	Spacer	3
10	(page 14)	Light Focus Assembly	1
11	8815-009-400	Thermal Shield	1
12	8815-013-000	Ground Wire	5.83'
13	8815-013-800	Spacer	3
14	8815-029-400	Ground Tape	2"
15	8815-019-900	Pem Fastener	3

8815-030-000 Focus Assembly

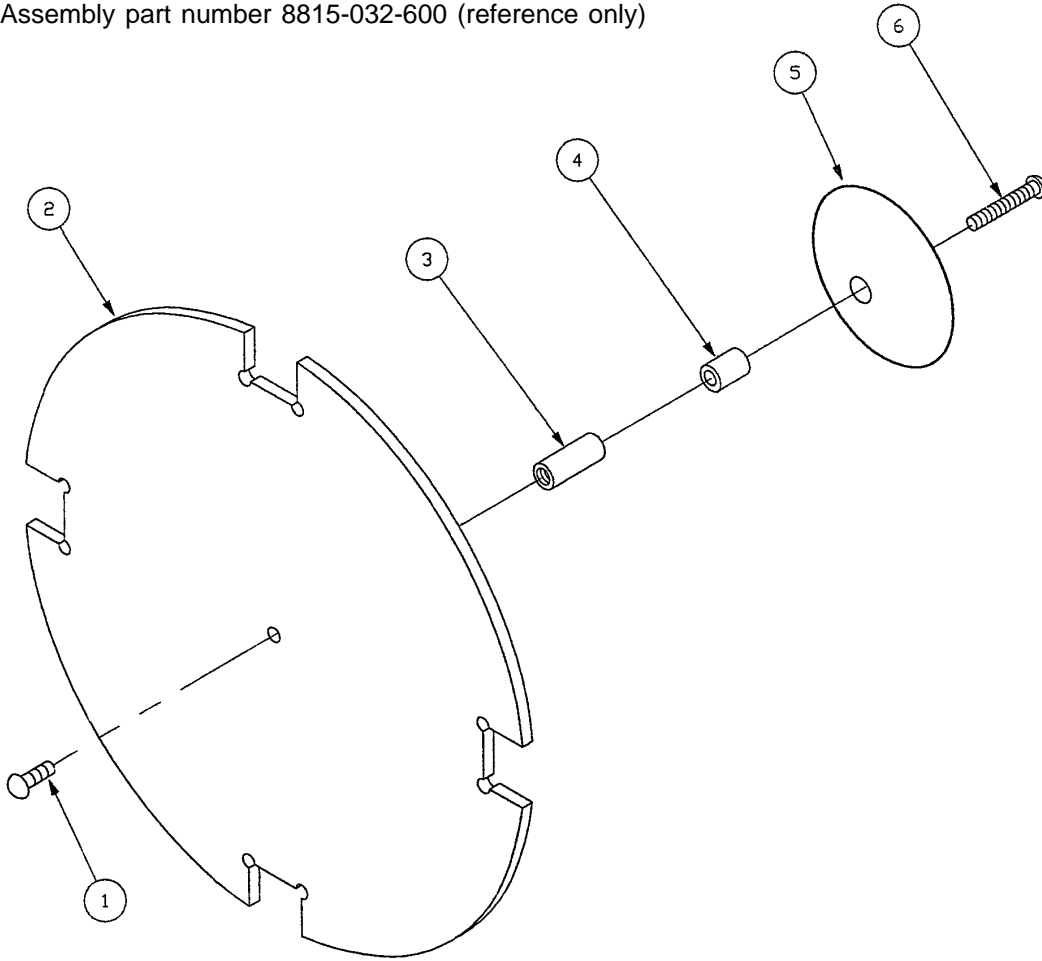
Assembly part number 8815-032-700 (reference only)



Item	Part No.	Part Name	Qty.
1	8815-002-000	Set Screw Collar	1
2	8808-319-600	Belleville Spring	1
3	8800-210-000	Flange Bushing	2
4	8815-003-700	Hex Hd. Cap Screw	3
5	8815-005-500	Int. Tooth Lock Washer	3
6	8815-019-400	Bulb Mounting Plate	1
7	8815-025-300	Screw	1
8	8815-014-200	Hex Socket Screw	1
9	8815-006-100	Focusing Hub	1
10	8815-012-800	Focus Adj. Screw Ass'y	1
11	8815-007-200	Socket Mtg. Block	1
12	8815-016-800	Spacer	1
13	8815-010-800	Lamp Socket	1
14	8815-004-100	Phillips Hd. Screw	2

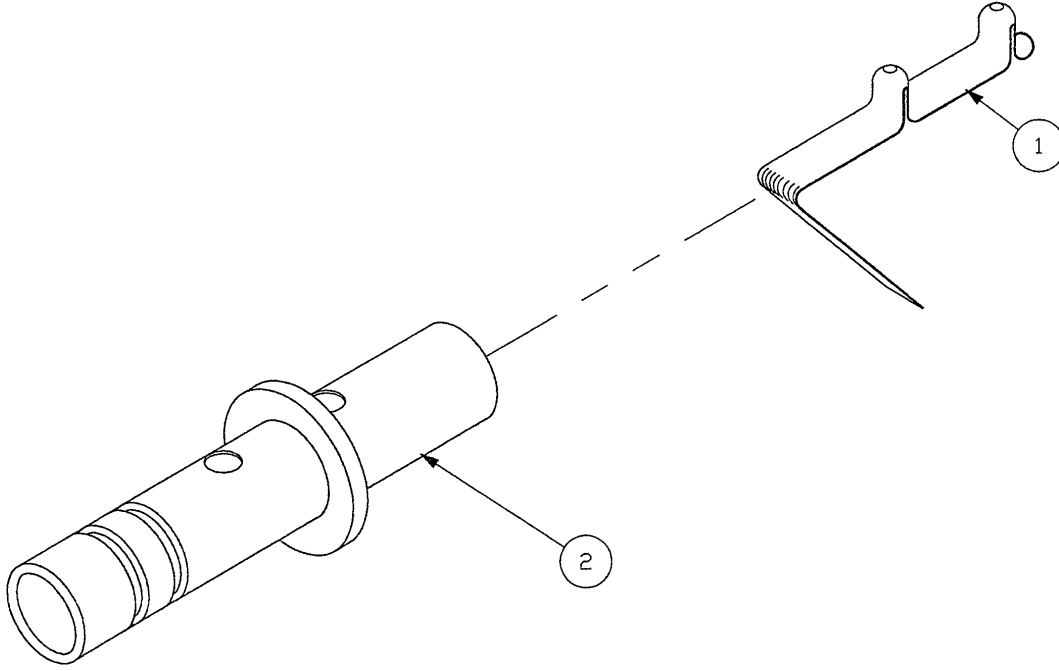
8815-028-100 Lens Assembly

Assembly part number 8815-032-600 (reference only)



Item	Part No.	Part Name	Qty.
1	8815-002-200	Pan Hd. Screw	1
2	8815-028-600	Lens	1
3	8815-017-900	Spacer	1
4	8815-013-800	Spacer	1
5	8815-007-800	Front Shield	1
6	8815-014-000	Round Hd. Screw	1

8815-032-500 Handle Assembly

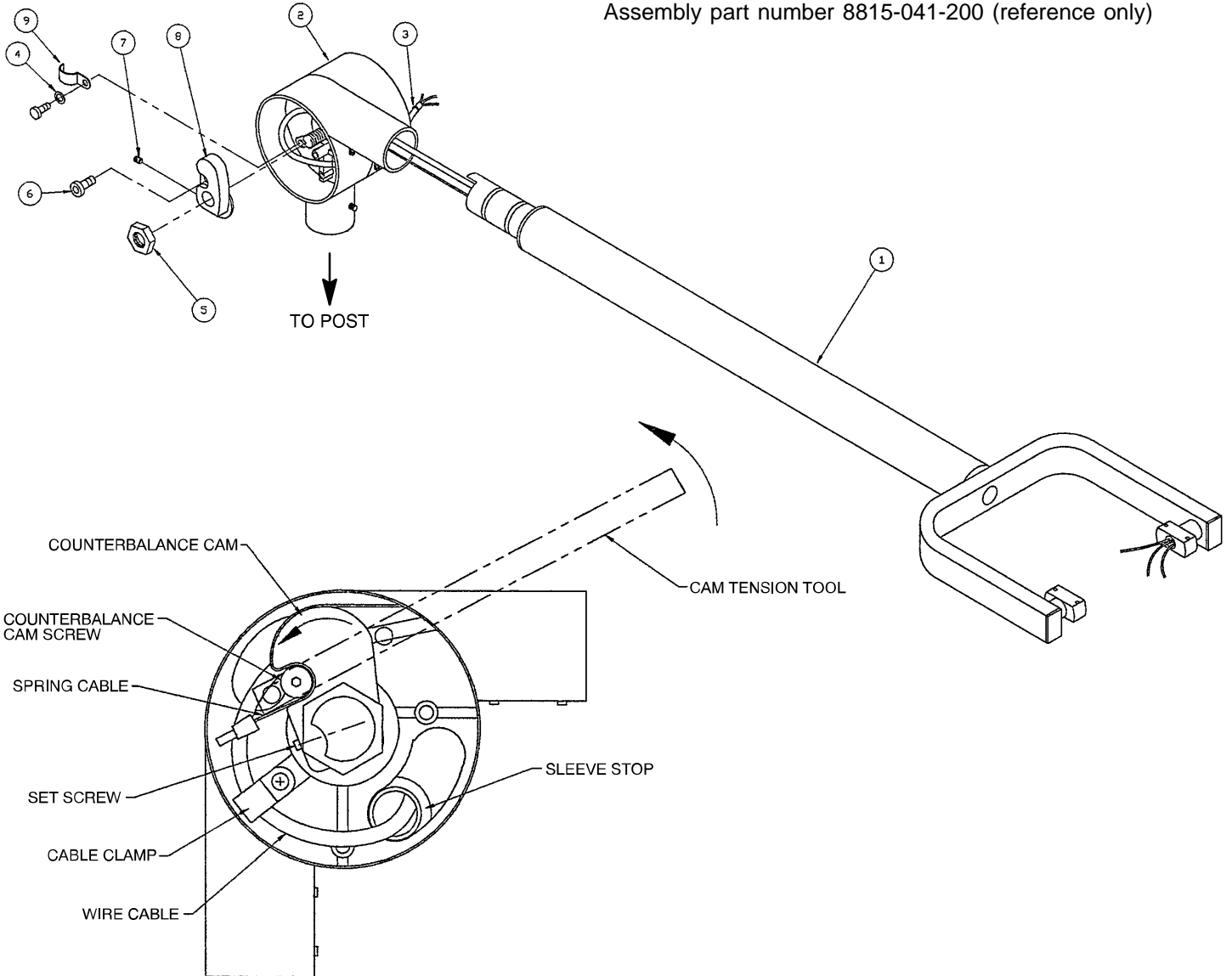


Item	Part No.	Part Name	Qty.
1	8815-016-900	Snap Button Clip	1
2	8815-011-300	Light Handle	1

Set of two handles = part number 8815-011-100

Arm Assembly

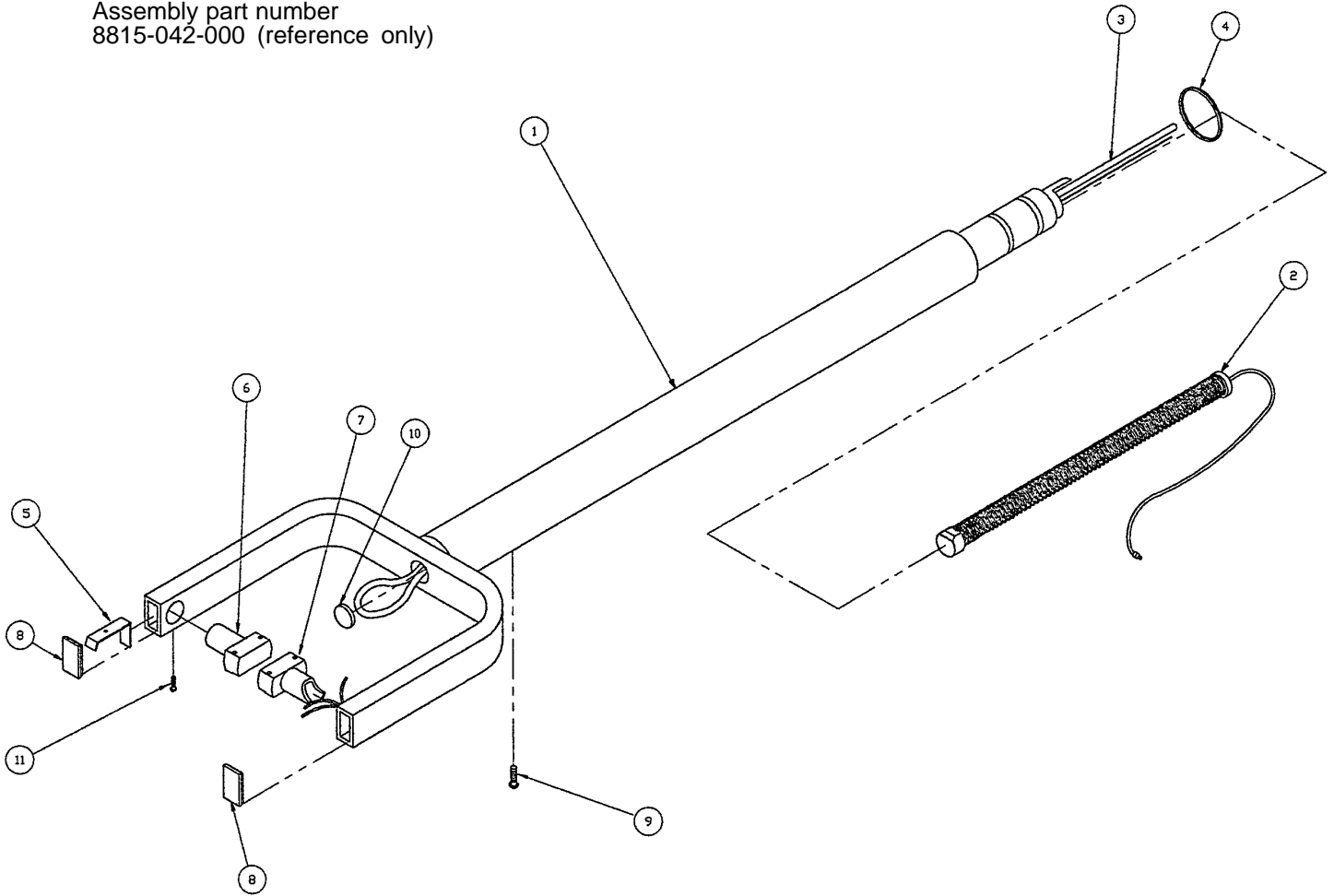
Assembly part number 8815-041-200 (reference only)



Item	Part No.	Part Name	Qty.
1	(page 18)	Yoke Assembly	1
2	(page 20)	Hub Assembly	1
3	8815-02-56-00	Cable Tie	1
4	8815-00-55-00	Lock Washer	1
5	8815-01-47-00	Hex Jam Nut	1
6	8815-01-78-00	Soc. Hd. Screw	1
7	8800-22-16-00	Set Screw	1
8	8815-00-67-00	Counterbalance Cam	1
9	8800-46-00-00	Cable Clamp	1

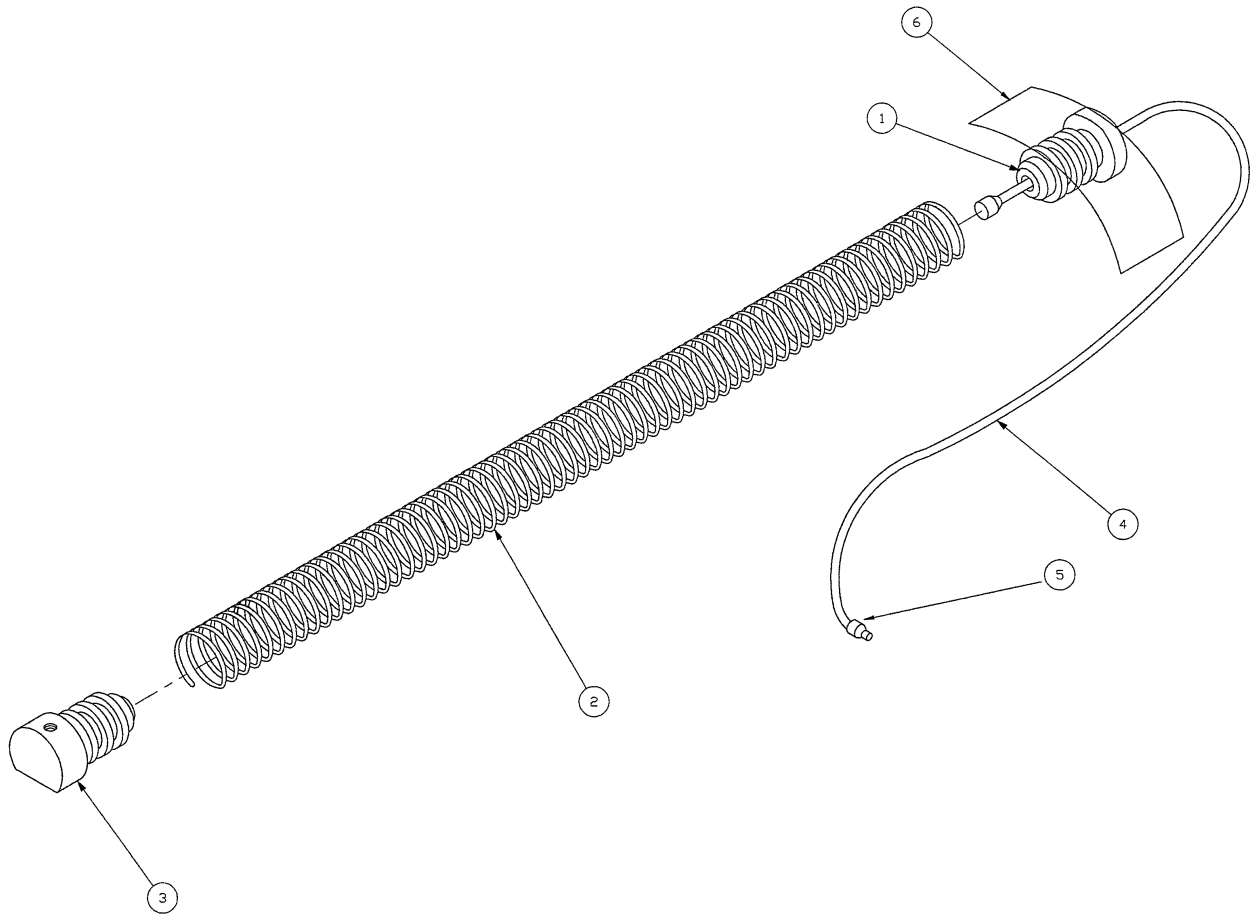
Yoke Assembly

Assembly part number
8815-042-000 (reference only)



Item	Part No.	Part Name	Qty.
1	8815-042-400	Yoke Swing Arm	1
2	(page 19)	Tension Spring Assembly	1
3	8815-029-000	Swing Arm Cable	4 Ft.
4	8815-016-100	Bearing Spacer	1
5	8815-017-200	Friction Spring	1
6	8815-015-600	Friction Block Pivot	1
7	8815-007-900	Head Pivot Block	1
8	8815-013-500	Rectangular Closure	2
9	8815-017-800	Button Hd. Screw	1
10	8815-031-300	Nylon Plug	1
11	8815-018-400	Phillips Hd. Screw	1

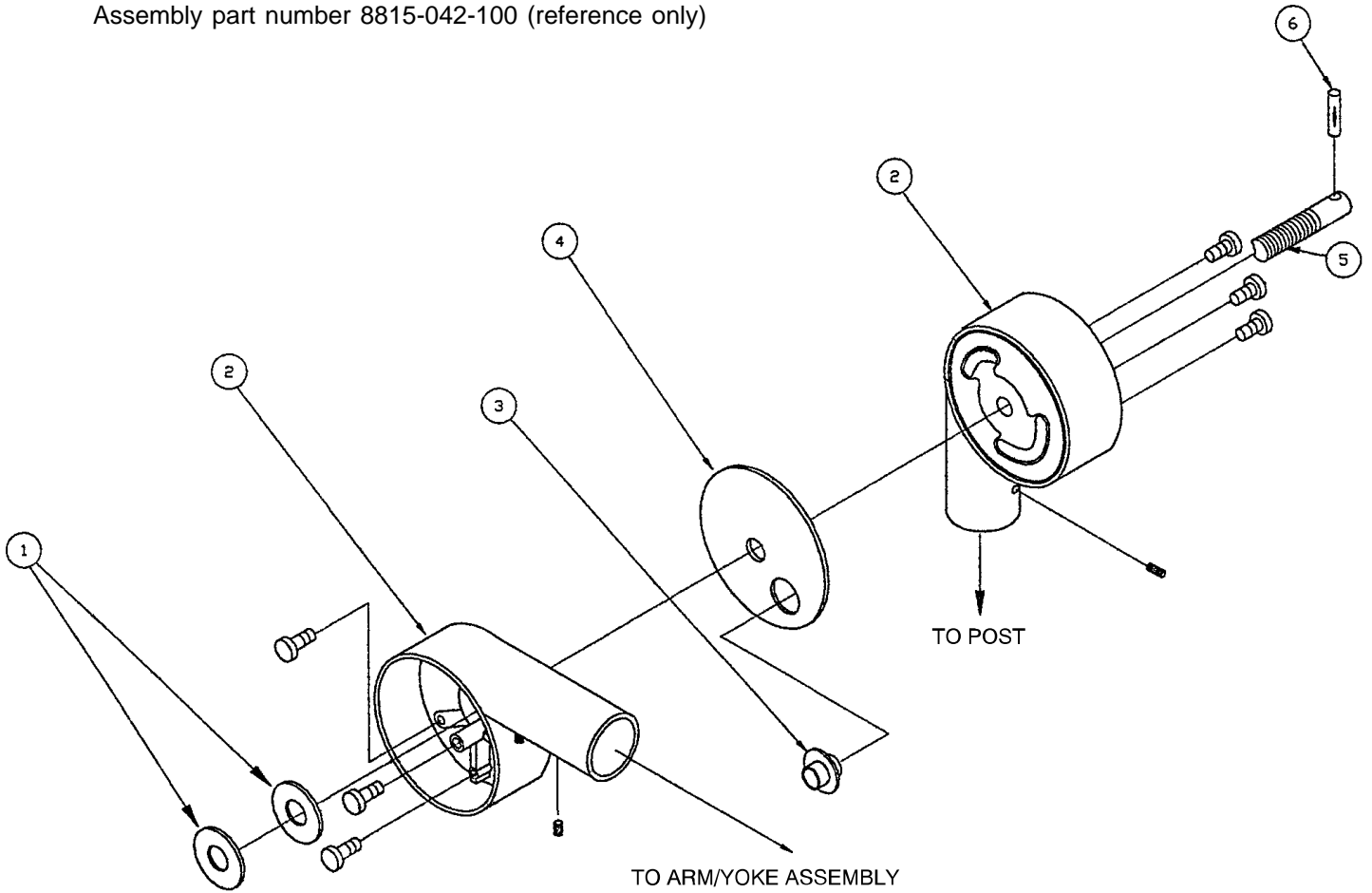
8815-034-700 Tension Spring Assembly



Item	Part No.	Part Name	Qty.
1	8815-007-400	Spring Fastener	1
2	8815-011-200	Counterbalance Spring	1
3	8815-007-300	Spring Anchor	1
4	8815-010-900	Counterbalance Cable	1
5	8815-019-200	Closed End Connector	1
6	8800-630-100	Adhesive Tape	3"

Hub Assembly

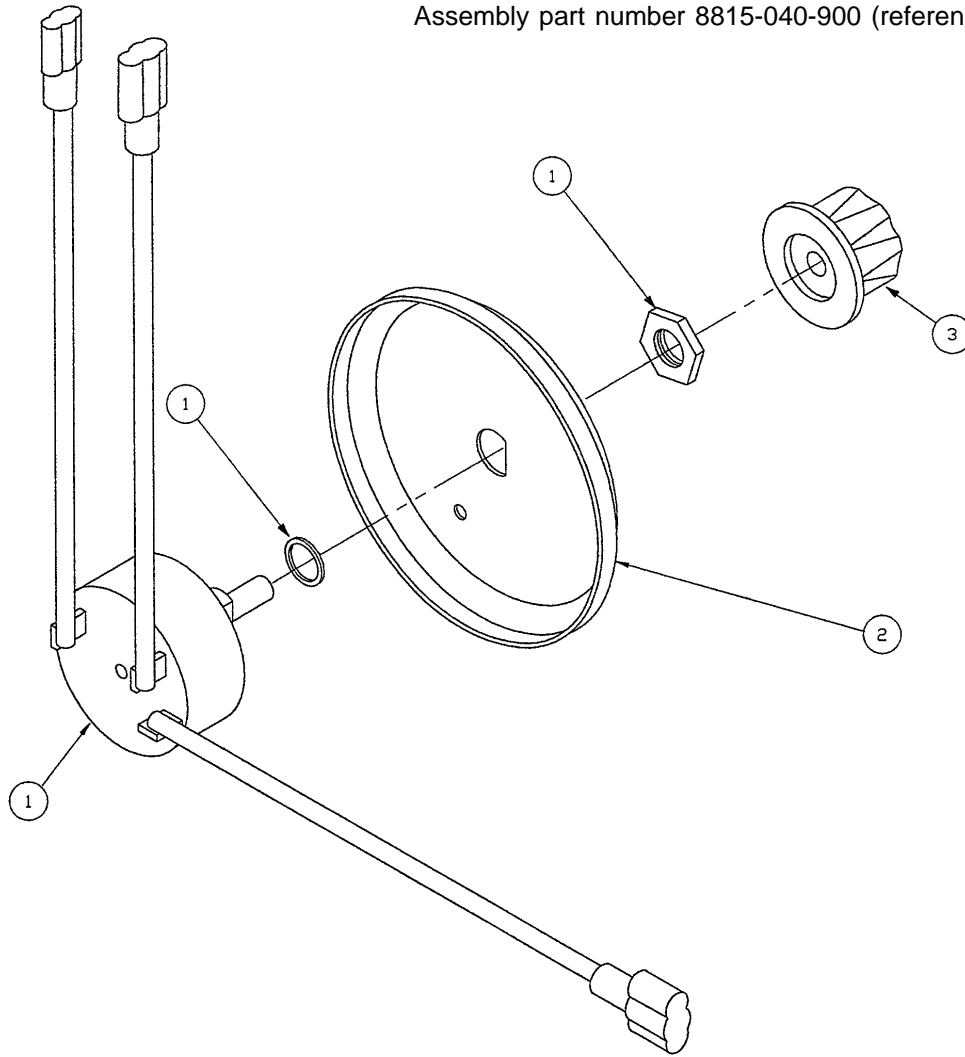
Assembly part number 8815-042-100 (reference only)



Item	Part No.	Part Name	Qty.
1	8815-013-700	Cam Thrust Washer	2
2	8815-042-300	Hub	2
3	8815-033-600	Sleeve Stop	1
4	8815-013-600	Hub Thrust Washer	1
5	8815-025-200	Hub Pivot Pin	1
6	8815-018-900	Groove Pin	1

Switch Cover Assembly

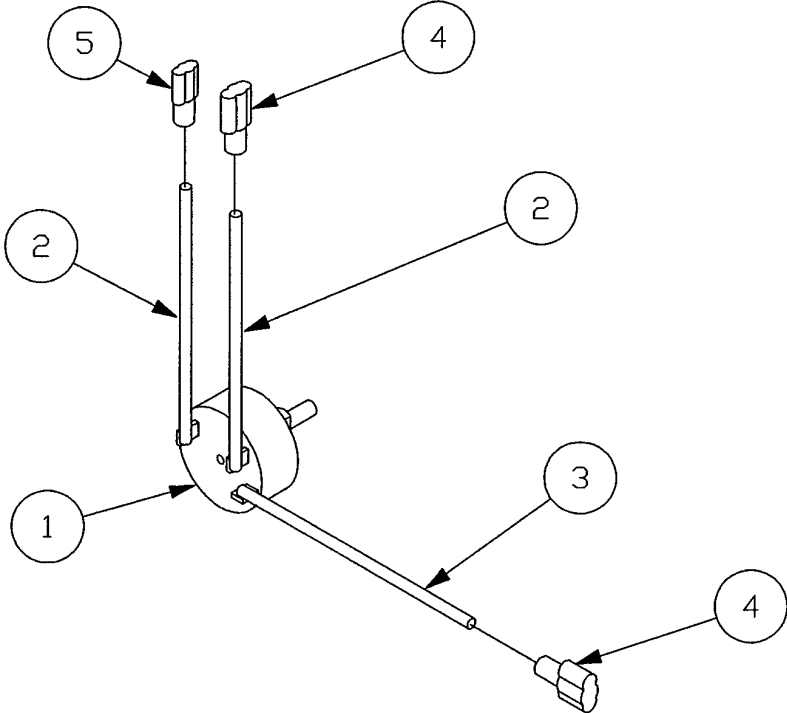
Assembly part number 8815-040-900 (reference only)



Item	Part No.	Part Name	Qty.
1	(page 22)	Rotary Switch Assembly	1
2	8815-042-700	Switch Hub Cover	1
3	8815-011-400	Focus Intensity Knob	1

8815-029-600 Rotary Switch Assembly

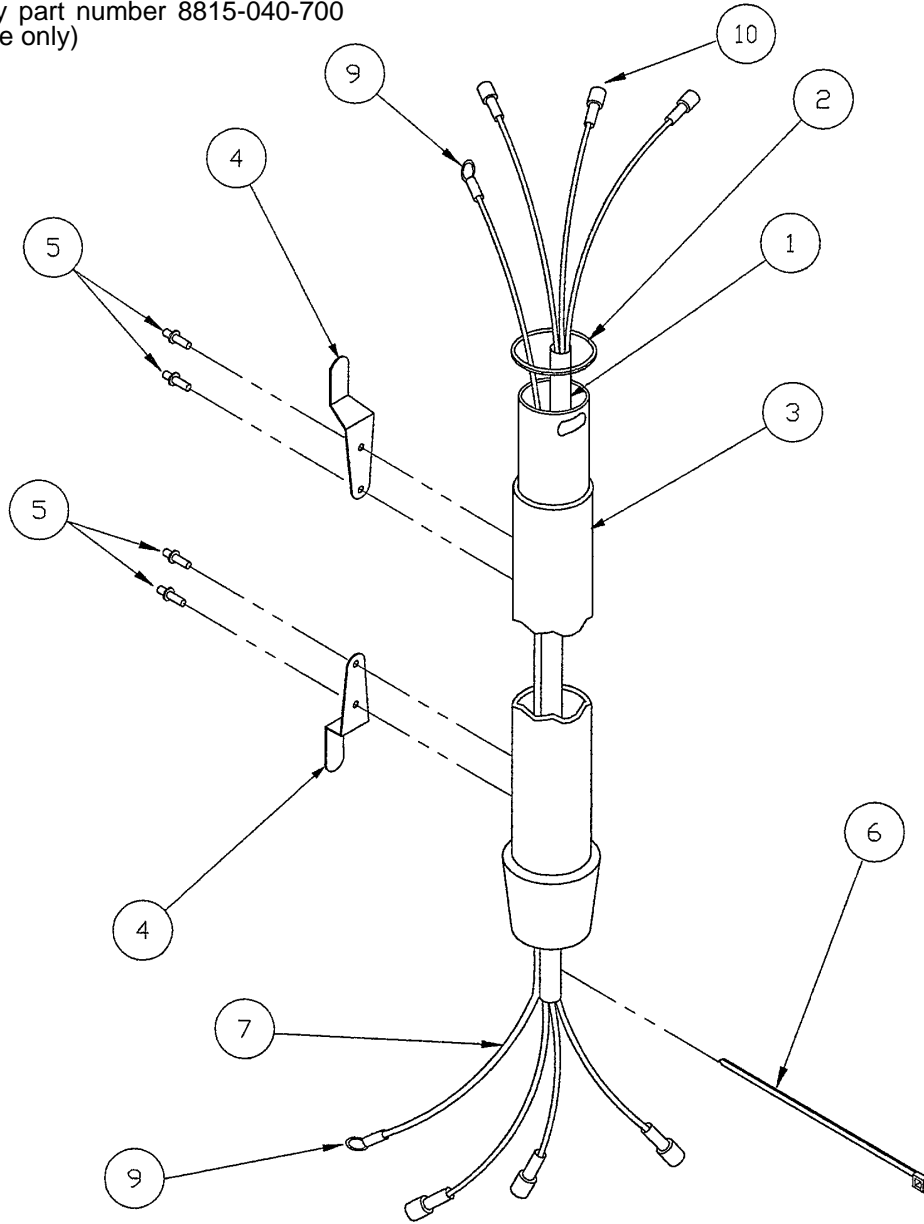
Assembly part number 8815-009-700 (reference only)



Item	Part No.	Part Name	Qty.
1	8815-005-100	3-Position Rotary Switch	1
2	8815-002-900	Red Hook Up Wire	3"
3	8815-011-700	White Hook Up Wire	1.5"
4	8815-002-600	Male Connector	2
5	8815-002-700	Female Connector	1

Post Assembly

Assembly part number 8815-040-700
(reference only)



Item	Part No.	Part Name	Qty.
1	8815-029-000	Cable	5.5
2	8815-016-100	Bearing Spacer	1
3	8815-041-000	Vertical Tube	1
4	0500-030-049	Cord Clip	2
5	8801-730-000	Pop Rivet	4
6	8815-025-600	Cable Tie	1
7	8815-013-000	Ground Wire	5.55'
9	8800-500-300	Ring Terminal	2
10	8815-002-700	Insulated Female Terminal	6

Replacement Parts List

<u>PART NAME</u>	<u>PART NUMBER</u>
Bulb, 70 Watt, 28 Volt	8815-035-800
Base with Casters	8815-040-200
Focus Stem Kit	8815-030-000
Fuse, 1 1/4 Amp, Slo-Blo	8815-003-200
Knob, Focus/Off, Hi/Low	8815-01 1-400
Lens with Deflector	8815-028-100
Light Handles, Pair (with Spring)	8815-01 1-100
Light Socket	8815-010-800
Light Socket Mount Block (Black)	8815-007-200
Coated Mirror	8815-009-800
Transformer Kit, 110V	8815-028-800
Transformer Kit, 220V	8815-030-100
Switch Rotary Kit	8815-029-600
Stop Sleeve Assembly (with Steel Sleeve)	8815-034-200

Warranty

Limited Warranty:

Stryker Medical Division, a division of Stryker Corporation, warrants to the original purchaser that its products should be free from defects in material and workmanship for a period of one (1) year after date of delivery. Stryker's obligation under this warranty is expressly limited to supplying replacement parts and labor for, or replacing, at its option, any product which is, in the sole discretion of Stryker, found to be defective. Stryker warrants to the original purchaser that the frame and welds on its beds will be free from structural defects for as long as the original purchaser owns the bed. If requested by Stryker, products or parts for which a warranty claim is made shall be returned prepaid to Stryker's factory. Any improper use or any alteration or repair by others in such manner as in Stryker's judgement affects the product materially and adversely shall void this warranty. Any repair of Stryker products using parts not provided or authorized by Stryker shall void this warranty. No employee or representative of Stryker is authorized to change this warranty in any way.

Stryker Medical stretchers are designed for a 10 year expected life under normal use conditions and appropriate periodic maintenance as described in the maintenance manual for each device.

This statement constitutes Stryker's entire warranty with respect to the aforesaid equipment. STRYKER MAKES NO OTHER WARRANTY OR REPRESENTATION, EITHER EXPRESSED OR IMPLIED, EXCEPT AS SET FORTH HEREIN. THERE IS NO WARRANTY OF MERCHANTABILITY AND THERE ARE NO WARRANTIES OF FITNESS FOR ANY PARTICULAR PURPOSE. IN NO EVENT SHALL STRYKER BE LIABLE HEREUNDER FOR INCIDENTAL OR CONSEQUENTIAL DAMAGES ARISING FROM OR IN ANY MANNER RELATED TO SALES OR USE OF ANY SUCH EQUIPMENT.

To Obtain Parts and Service:

Stryker products are supported by a nationwide network of dedicated Stryker Field Service Representatives. These representatives are factory trained, available locally, and carry a substantial spare parts inventory to minimize repair time. Simply call your local representative, or call Stryker Customer Service at (800) 327-0770.

Service Contract Coverage:

Stryker has developed a comprehensive program of service contract options designed to keep your equipment operating at peak performance at the same time it eliminates unexpected costs. We recommend that these programs be activated *before* the expiration of the new product warranty to eliminate the potential of additional equipment upgrade charges.

A SERVICE CONTRACT HELPS TO:

- Ensure equipment reliability
- Stabilize maintenance budgets
- Diminish downtime
- Establish documentation for JCAHO
- Increase product life
- Enhance trade-in value
- Address risk management and safety

Warranty

Stryker offers the following service contract programs:

SPECIFICATIONS	GOLD	SILVER	PM* ONLY
Annually scheduled preventative maintenance	X		X
All parts,** labor, and travel	X	X	
Unlimited emergency service calls	X	X	
Priority one contact; two hour phone response	X	X	X
Most repairs will be completed within 3 business days	X	X	
JCAHO documentation	X	X	X
On-site log book w/ preventative maintenance & emergency service records	X		
Factory-trained Stryker Service Technicians	X	X	X
Stryker authorized parts	X	X	X
End of year summary	X		
Stryker will perform all service during regular business hours (9-5)	X	X	X

* Replacement parts and labor for products under PM contract will be discounted.

** Does not include any disposable items, I.V. poles (except for Stryker HD permanent poles), mattresses, or damage resulting from abuse.

Stryker Medical also offers *personalized* service contracts.

Pricing is determined by age, location, model and condition of product.

For more information on our service contracts, please call your local representative or call (800) 327-0770 (option #2).

Return Authorization:

Merchandise cannot be returned without approval from the Stryker Customer Service Department. An authorization number will be provided which must be printed on the returned merchandise. Stryker reserves the right to charge shipping and restocking fees on returned items.

SPECIAL, MODIFIED, OR DISCONTINUED ITEMS NOT SUBJECT TO RETURN.

Damaged Merchandise:

ICC Regulations require that claims for damaged merchandise must be made with the carrier within fifteen (15) days of receipt of merchandise. **DO NOT ACCEPT DAMAGED SHIPMENTS UNLESS SUCH DAMAGE IS NOTED ON THE DELIVERY RECEIPT AT THE TIME OF RECEIPT.** Upon prompt notification, Stryker will file a freight claim with the appropriate carrier for damages incurred. Claim will be limited in amount to the actual replacement cost. In the event that this information is not received by Stryker within the fifteen (15) day period following the delivery of the merchandise, or the damage was not noted on the delivery receipt at the time of receipt, the customer will be responsible for payment of the original invoice in full.

Claims for any short shipment must be made within thirty (30) days of invoice.

International Warranty Clause:

This warranty reflects U.S. domestic policy. Warranty outside the U.S. may vary by country. Please contact your local Stryker Medical representative for additional information.



European Representative

Stryker France
BP 50040-95946 Roissy Ch. de Gaulle
Cedex-France

Phone: 33148632290
Fax: 33148632175

stryker[®]
Medical

6300 Sprinkle Road, Kalamazoo, MI 49001-9799

(800) 327-0770