

stryker[®]
Medical

Transport Series

720 Transport Stretcher

Maintenance Manual

For Parts or Technical Assistance
800-327-0770

Table of Contents

| | |
|--|--------|
| Introduction | |
| Specifications | 3 |
| Warning / Caution / Note Definition | 3 |
| Preventative Maintenance Checklist | 4 |
| Cleaning | 5 |
| Service Information | |
| Caster Assembly Replacement | 6 |
| Caster Cover Installation And Removal | 6 |
| Brake Rod Removal | 7 |
| Brake Ring Removal | 8 |
| Fifth Wheel Removal | 8 |
| Stretcher Height Adjustment | 9 |
| Pneumatic Fowler Adjustment | 9 |
| Siderail Latch Adjustment | 10 |
| Transfer Board Counterbalance Adjustment | 10 |
| Replacement Parts | 11 |
| Assembly Drawings and Parts Lists | |
| Base with Standard Brakes | 13–15 |
| Brake Rod Assembly | 16 |
| Drive Link Assembly | 17 |
| Fifth Wheel Assembly | 18, 19 |
| Caster Assembly | 20 |
| Base Assembly with 4–Sided Brakes | 21–23 |
| Brake Rod Assembly | 24, 25 |
| Base Labeling Assembly | 26–28 |
| Litter Assembly | 29–31 |
| Manual Fowler Assembly | 32 |
| Pneumatic Fowler Assembly | 33, 34 |
| Outer Housing Assembly | 35 |
| Siderail Assembly, Right & Left | 36 |
| Short Transfer System to Frame Assembly | 37 |
| Short Transfer System Assembly, Left | 38 |
| Short Transfer System Assembly, Right | 39 |
| Long Transfer System to Frame Assembly | 40 |
| Long Transfer System Assembly, Left | 41 |

Table of Contents

Assembly Drawings and Parts Lists (Continued)

| | |
|--|----|
| Long Transfer System Assembly, Right | 42 |
| Removable I.V. Pole Assembly | 43 |
| Tethered I.V. Pole Mounting Assembly | 44 |
| Tethered I.V. Pole Assembly | 45 |
| 2-Stage I.V. Pole Assembly, Foot & Head | 46 |
| 2-Stage I.V. Pole Assembly | 47 |
| I.V. Pole Latch Assembly | 48 |
| 3-Stage I.V. Pole Assembly, Head & Foot | 49 |
| 3-Stage I.V. Pole Assembly | 50 |
| 3rd Stage Assembly | 51 |
| C-Spine Cassette Holder Assembly | 52 |
| C-Spine Support Pole Assembly | 53 |
| C-Spine Storage Bracket Assembly | 54 |
| Defibrillator Tray Assembly | 55 |
| Foot Extension/Defibrillator Tray Assembly | 56 |
| Foot Board/Chartholder Assembly | 57 |
| Upright Oxygen Bottle Holder Assembly | 57 |
| O2 Bottle Retainer Assembly | 58 |
| Mattresses and Siderail Pads | 59 |

Warranty

| | |
|--------------------------------------|----|
| Obtaining Parts and Service | 60 |
| Supplemental Warranty Coverage | 60 |
| Return Authorization | 61 |
| Freight Damage Claims | 61 |

Introduction

INTRODUCTION

This manual is designed to assist you with the maintenance of the Model 720 Transport Stretcher. Read it thoroughly before using the equipment or beginning any maintenance on it.

SPECIFICATIONS

| | |
|--------------------------|-----------------|
| Maximum Weight Capacity | 500 pounds |
| Overall Bed Length/Width | 81", 30" |
| Fixed Height Options | 28", 30", 32" |
| Fowler Angle | 0 to 90 degrees |

Stryker reserves the right to change specifications without notice.

WARNING / CAUTION / NOTE DEFINITION

The words WARNING, CAUTION and NOTE carry special meanings and should be carefully reviewed.

WARNING

The personal safety of the patient or user may be involved. Disregarding this information could result in injury to the patient or user.

CAUTION

These instructions point out special procedures or precautions that must be followed to avoid damaging the equipment.

NOTE

This provides special information to make maintenance easier or important instructions clearer.

WARNING

Patients should be discouraged from sitting directly on the ends of the stretcher. Excessive weight will cause the litter surface to tip up, possibly causing patient injury.

Always apply the caster brakes when a patient is getting on or off the stretcher. Push on the stretcher to ensure the brakes are securely locked. Always engage the brakes unless the stretcher is being moved. Injury could result if the stretcher moves while a patient is getting on or off the stretcher.

Preventative Maintenance

CHECKLIST

- _____ All fasteners secure (reference all assembly prints)
- _____ Siderails move and latch properly
- _____ Engage brake pedal and push on the stretcher to ensure all casters lock securely
- _____ Steer function working properly
- _____ All casters secure and swivel properly
- _____ Body restraints working properly
- _____ I.V. pole intact and operating properly
- _____ Oxygen bottle holder intact and operating properly
- _____ Fowler operates and latches properly
- _____ No rips or cracks in mattress cover
- _____ Transfer boards intact and operating properly
- _____ Ground chain intact
- _____ Lubricate where required
- _____ Accessories and mounting hardware in good condition and working properly

Serial No. _____

Completed By: _____ Date: _____

NOTE

Preventative maintenance should be performed at a minimum of annually. A preventative maintenance program should be established for all Stryker Medical equipment. Preventative maintenance may need to be performed more frequently based on the usage level of the product.

NOTE

References to the right or left side of the stretcher refer to the right and left sides of a patient lying face up on the stretcher.

Cleaning

Hand wash all surfaces of the stretcher with warm water and mild detergent. Dry thoroughly. **DO NOT STEAM CLEAN, PRESSURE WASH, HOSE OFF OR ULTRASONICALLY CLEAN.** Using these methods of cleaning is **not** recommended and may void this product's warranty.

Clean Velcro **AFTER EACH USE**. Saturate Velcro with disinfectant and allow disinfectant to evaporate. (Appropriate disinfectant for nylon Velcro should be determined by the hospital.)

In general, when used in those concentrations recommended by the manufacturer, either phenolic type or quaternary type disinfectants can be used. Iodophor type disinfectants are not recommended for use. The following products have been tested and have been found not to have a harmful effect **WHEN USED IN ACCORDANCE WITH MANUFACTURERS RECOMMENDED DILUTION.***

| TRADE NAME | DISINFECTANT TYPE | MANUFACTURER | *MANUFACTURER'S RECOMMENDED DILUTION |
|---------------------------|-------------------|--|--------------------------------------|
| A33 | Quaternary | Airwick (Professional Products Division) | 2 ounces/gallon |
| A33 (dry) | Quaternary | Airwick (Professional Products Division) | 1/2 ounce/gallon |
| Beaucoup | Phenolic | Huntington Laboratories | 1 ounce/gallon |
| Blue Chip | Quaternary | S.C. Johnson | 2 ounces/gallon |
| Elimstaph | Quaternary | Walter G. Legge | 1 ounce/gallon |
| Franklin Phenomysan F2500 | Phenolic | Purex Corporation | 1 1/4 ounce/gallon |
| Franklin Sentinel | Quaternary | Purex Corporation | 2 ounces/gallon |
| Galahad | Phenolic | Puritan Churchill Chemical Company | 1 ounce/gallon |
| Hi-Tor | Quaternary | Huntington Laboratories | 1/2 ounce/gallon |
| LPH | Phenolic | Vestal Laboratories | 1/2 ounce/gallon |
| Matar | Phenolic | Huntington Laboratories | 1/2 ounce/gallon |
| Omega | Quaternary | Airwick (Professional Products Division) | 1/2 ounce/gallon |
| Quanto | Quaternary | Huntington Laboratories | 1 ounce/gallon |
| Sanikleen | Quaternary | West Chemical Products | 2 ounces/gallon |
| Sanimaster II | Quaternary | Service Master | 1 ounce/gallon |
| Vesphene | Phenolic | Vestal Laboratories | 1 1/4 ounce/gallon |

Quaternary Germicidal Disinfectants, used as directed, and/or Chlorine Bleach products, typically 5.25% Sodium Hypochlorite in dilutions ranging between 1 part bleach to 100 parts water, and 2 parts bleach to 100 parts water are not considered mild detergents. These products are corrosive in nature and may cause damage to your stretcher if used improperly. If these types of products are used to clean Stryker patient handling equipment, measures must be taken to insure the stretchers are rinsed with clean water and thoroughly dried following cleaning. Failure to properly rinse and dry the stretchers will leave a corrosive residue on the surface of the stretcher, possibly causing premature corrosion of critical components. Failure to follow the above directions when using these types of cleaners may void this product's warranty.

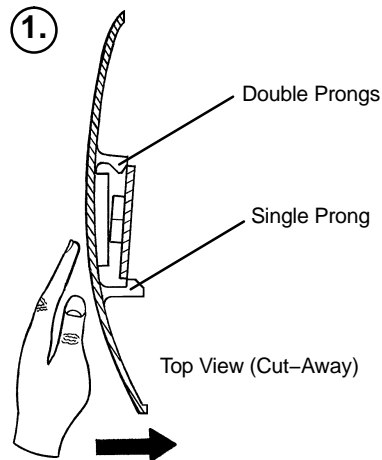
REMOVAL OF IODINE COMPOUNDS

This solution may be used to remove iodine stains from mattress cover surfaces.

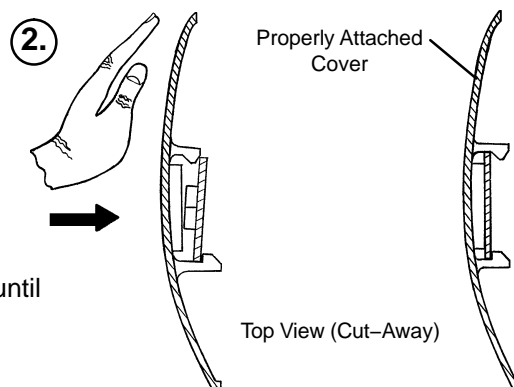
1. Use a solution of 1–2 tablespoons Sodium Thiosulfate in a pint of warm water to clean the stained area. Clean as soon as possible after staining occurs. If stains are not immediately removed, allow solution to soak or stand on the surface.
2. Rinse surfaces which have been exposed to the solution in clear water before returning bed to service.

Service Information

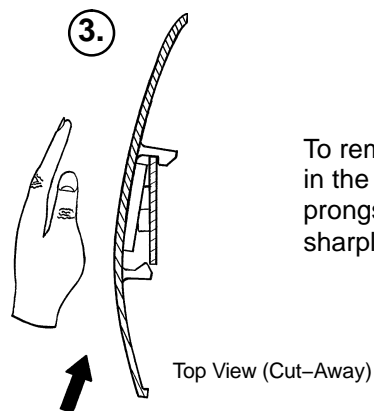
CASTER COVER INSTALLATION AND REMOVAL



Looking through the larger of the two side cut-outs, align the cover with the axle nut or bolt head, as shown. Push down on the opposite side of the cover until the single prong engages the caster horn.



Push on the cover with your palm until the double prongs engage.



To remove the wheel cover, insert a large screwdriver into the cut-out in the side of the wheel cover and into the space between the double prongs. Pry up the cover to disengage the double prongs and push sharply upward to disengage the single prong.

CASTER REMOVAL

Required Tools:

9/16" Open End Wrench

1. Remove the caster cover.
2. While keeping pressure on the caster bolt with your index finger, use a 9/16" open end wrench to remove the nylock hex nut on top of the caster assembly.
3. Using the brake ring, lift up on the base assembly and pull the caster assembly down to remove it.
4. Reverse steps 1-3 to install the new caster.

Service Information

BRAKE ROD REMOVAL

Required Tools:

Hammer

7/32" Punch

String or Bungee Cords

1. Pump the litter up to full height.
2. Lift the base hood and support it from the litter using string or bungee cords.
3. Remove the hex head cap screws connecting the brake rod supports to the base frame.
4. Remove the bolt connecting the drive link assembly to the fifth wheel cam.
5. Remove the rue ring cotter and clevis pin connecting the rod end link to the side control link.
6. Remove the rue ring cotter connecting the drive link assembly to the bearing pivot support on the base frame (under the brake ring weldment).
7. Remove the three hex washer head screws holding the brake rod assembly to the base frame.
8. Remove the slotted spring pins connecting the butterfly "V" pedals, drive link assemblies and side control link to the brake rod.
9. Reverse steps 1–8 to reinstall the brake rod. When reinstalling the brake rod supports, torque the hex head cap screws to 12–15 ft.–lbs.

CAUTION

When reattaching the brake rod assembly to the base frame, set the torque specs **no higher** than 15 ft.–lbs. or damage could occur to the bolts.

SIDE CONTROL BRAKE ROD REMOVAL

Required Tools:

Hammer

7/32" Punch

Needle Nose Pliers

String or Bungee Cords

1. Pump the litter up to full height.
2. Lift the base hood and support it from the litter using string or bungee cords.
3. Remove the rue ring cotter and clevis pin connecting the rod end link to the side control link.
4. Remove the four bolts holding the brake rod assembly to the base frame and remove the entire assembly.
5. Using a hammer and 7/32" punch, drive the slotted spring pin out of the butterfly "V" pedal on the patient's left side and remove the pedal,
6. Using a hammer and 7/32" punch, drive the slotted spring pin out of the hard stop in the center of the support weldment.
7. Using a hammer and 7/32" punch, drive out the slotted spring pin connecting the side control link to the side control brake rod on the patient's right side.
8. Pull on the butterfly "V" pedal on the patient's right side to remove the side control brake rod from the base.
9. Reverse steps 1–8 to reinstall the brake rod. When reinstalling the assembly, torque the hex head cap screws to 12–15 ft.–lbs.

CAUTION

When reattaching the brake rod assembly to the base frame, set the torque specs **no higher** than 15 ft.–lbs. or damage could occur to the bolts.

Service Information

BRAKE RING REMOVAL

Required Tools:

9/16" Socket w/Extension 3/8" Drive Ratchet Needle–Nose Pliers String or Bungee Cord

1. Pump the litter up to full height.
2. Lift the base hood and support it from the litter using string or bungee cords.
3. Using needle–nose pliers, unhook the extension springs from the top of the base caster tubes.
4. Remove the plastic caster covers.
5. While putting pressure on the caster carriage bolt, use a 9/16" socket and a 3/8" drive ratchet to remove the caster nut on both sides of the stretcher.
6. Remove the casters.
7. Remove the brake rod (see procedure).
8. Remove the cotter pin from the clevis pin in the center of the brake ring weldment.
9. Remove the cotter pin from the bearing pivot support.
10. Remove the 3/4" nylock hex nut from the bearing pivot support.
11. Remove the drive link assembly.
12. Pull the brake ring down and out away from the stretcher base frame.
13. Reverse steps 1–12 to reinstall the brake ring.

FIFTH WHEEL ASSEMBLY REMOVAL

Required Tools:

1/2" Socket 3/8" Drive Ratchet

1. Using a 1/2" socket and 3/8" drive ratchet, remove the 1/2" bolt holding the fifth wheel cam drive link and fifth wheel drive link to the fifth wheel cam.
2. Remove the two 1/2" bolts holding the fifth wheel mounting bracket to the base frame weldment.
3. Remove the fifth wheel assembly.
4. Reverse steps 1 and 2 to reinstall the fifth wheel. When reinstalling the assembly, torque the hex head cap screws to 12–15 ft.–lbs.

CAUTION

When reattaching the fifth wheel assembly to the base frame, set the torque specs **no higher** than 15 ft.–lbs. or damage could occur to the bolts.

Service Information

STRETCHER HEIGHT ADJUSTMENT

NOTE

The 720 Transport Stretcher is available in three "fixed" heights: 28", 30", and 32". The preset stretcher height was chosen at the time of purchase. Follow the procedure below to change the stretcher height.

Required Tools:

1/2" Open End Wrench

1/2" Socket with Ratchet

Adjustment Procedure:

WARNING

Do not attempt the following adjustment with a patient on the stretcher or injury could occur.

1. Using a 1/2" open end wrench and 1/2" socket with ratchet, remove the two hex nuts from the bolts on both the head and foot end upper tower assembly, leaving the bolts in place.
3. Lift the litter top at both ends only enough to relieve the pressure on the 4 bolts and remove the bolts and 8 washers.
4. Adjust to the desired height by aligning the appropriate holes located in both the head and foot end upper and lower tower assemblies.
5. Reinstall the 4 bolts, 8 washers and 4 self-locking nuts and tighten securely.

PNEUMATIC FOWLER ADJUSTMENT

Required Tools:

5/32" Hex Allen Wrench

1/2" Open End Wrench

Adjustment Procedure:

1. For part identification, refer to page 34, drawing 0721-231-120.
2. For easier access, move Fowler to 75° or higher.
3. Using a 1/2" open end wrench, loosen the nuts (item K) in the actuator arms on the end of the trip bar (F).
4. To adjust the Fowler, use a 5/32" hex Allen wrench to turn the Allen screws (item N) 1 to 2 turns counter-clockwise if the Fowler will not move or 1 to 2 turns clockwise if the Fowler will not hold its position.
5. Retighten the nuts. Be sure the Fowler will travel from flat to 90° and down again and will hold its position when weight is applied before returning the stretcher to service.

Service Information

SIDERAIL LATCH ADJUSTMENT

Required Tools:

1/8" Hex Allen Wrench

WARNING

The siderail latches are preset at the factory, and do not normally need adjustment. If adjustment must be done, it is important to follow the procedure below. If adjustment is not done properly, injury to the patient or user could occur.

Adjustment Procedure:

1. Using a 1/8" hex Allen wrench, adjust the Allen screw located on the latch assembly opposite the latch. Turning the screw clockwise will **DECREASE** the amount of "play" in the latch. Turning counterclockwise will **INCREASE** the amount. The amount of "play" in the siderail, when in full up engaged position, should be approximately 1/8 to 3/16 inches.
-

CAUTION

Too much "play" when the siderail is in the full up engaged position will give the siderail the appearance of being unstable and could also cause premature wearing of the latch system.

Too little "play" will obstruct the latch and keep it from engaging completely in the full up position, which may cause damage to the latch and/or injury to the patient or user.

TRANSFER BOARD COUNTERBALANCE ADJUSTMENT

Required Tools:

7/16 Open End Wrench

Adjustment Procedure:

1. Raise the transfer board to the full up position.
2. Unhook the extension spring at the eye bolt.
3. Using a 7/16 open end wrench, loosen the jam nut at the eye bolt and adjust the eye bolt to the desired position.
4. Tighten the jam nut.
5. Hook the extension spring to the eye bolt.
6. Allow the transfer board to lower on its own.
7. Repeat steps 1–7 until the desired counterbalance is achieved.

Replacement Parts and Kits

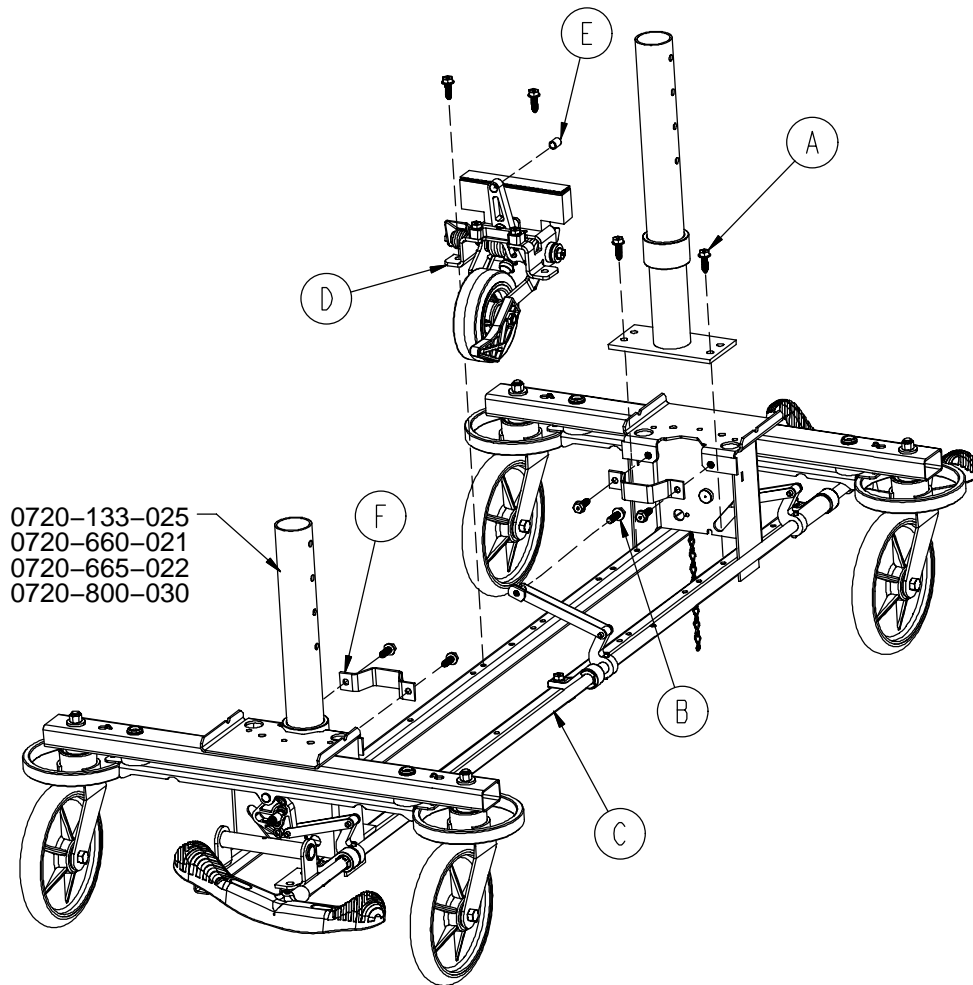
| <u>PART NAME</u> | <u>PART NUMBER</u> |
|--|---------------------------|
| Caster Assembly (1 complete) | 0753-010-020 |
| Caster Cover Kit | 1010-056-100 |
| C-Spine Cassette Holder | 1001-070-000 |
| Defibrillator/Equipment Tray | 0926-039-000 |
| Foot Board/Chartholder Combination | 0926-040-100 |
| Foot Board (1 per package) | 0946-029-001 |
| Foot Board (2 per package) | 0946-029-100 |
| Foot Extension/Defibrillator Tray | 1010-050-100 |
| Instrument/Serving Tray | 1052-026-000 |
| I.V. Caddy | 1050-001-100 |
| I.V. Caddy Tool Kit | 1050-010-000 |
| I.V. Pole, Standard, Removable | 0390-025-000 |
| I.V. Pole, 3-Stage Permanent, Head End | 0721-061-000 |
| I.V. Pole, 3-Stage Permanent, Foot End | 0721-062-000 |
| I.V. Pole, 2-Stage Permanent | 0721-400-001 |
| I.V. Pole, Tethered | 0721-117-000 |
| Mattress, 3" x 24" Standard | 1059-324-140 |
| Mattress, 3" x 26" Standard | 1059-326-140 |
| Mattress, 3" x 24" Enhanced Comfort | 0721-248-106 |
| Mattress, 4" x 24" Enhanced Comfort | 0721-247-106 |
| Mattress, 3" x 26" Enhanced Comfort | 1001-048-106 |
| Mattress, 4" x 26" Enhanced Comfort | 1001-047-106 |
| Oxygen Bottle Holder | 1020-030-000 |
| Paint, Touch-Up, Gloss Black, Bottle w/Brush | 7000-001-322 |
| Paint, Touch-Up, Gloss Black, Spray Can | 7000-001-319 |
| Paint, Touch-Up, Gray, Bottle w/Brush | 7000-001-320 |
| Paint, Touch-Up, Gray, Spray Can | 7000-001-317 |

Replacement Parts and Kits

| | |
|--------------------------------------|--------------|
| Restraint Straps, Complete Set | 1010-077-000 |
| Restraint Straps, Ankle | 0946-043-000 |
| Restraint Straps, Body | 0390-019-000 |
| Restraint Straps, Chest | 1010-058-000 |
| Restraint Straps, Wrist | 0946-044-000 |
| Patient Transfer Board, Long | 0721-235-000 |
| Patient Transfer Board, Short | 0721-239-000 |

Fixed Height Base Assembly with Standard Brakes

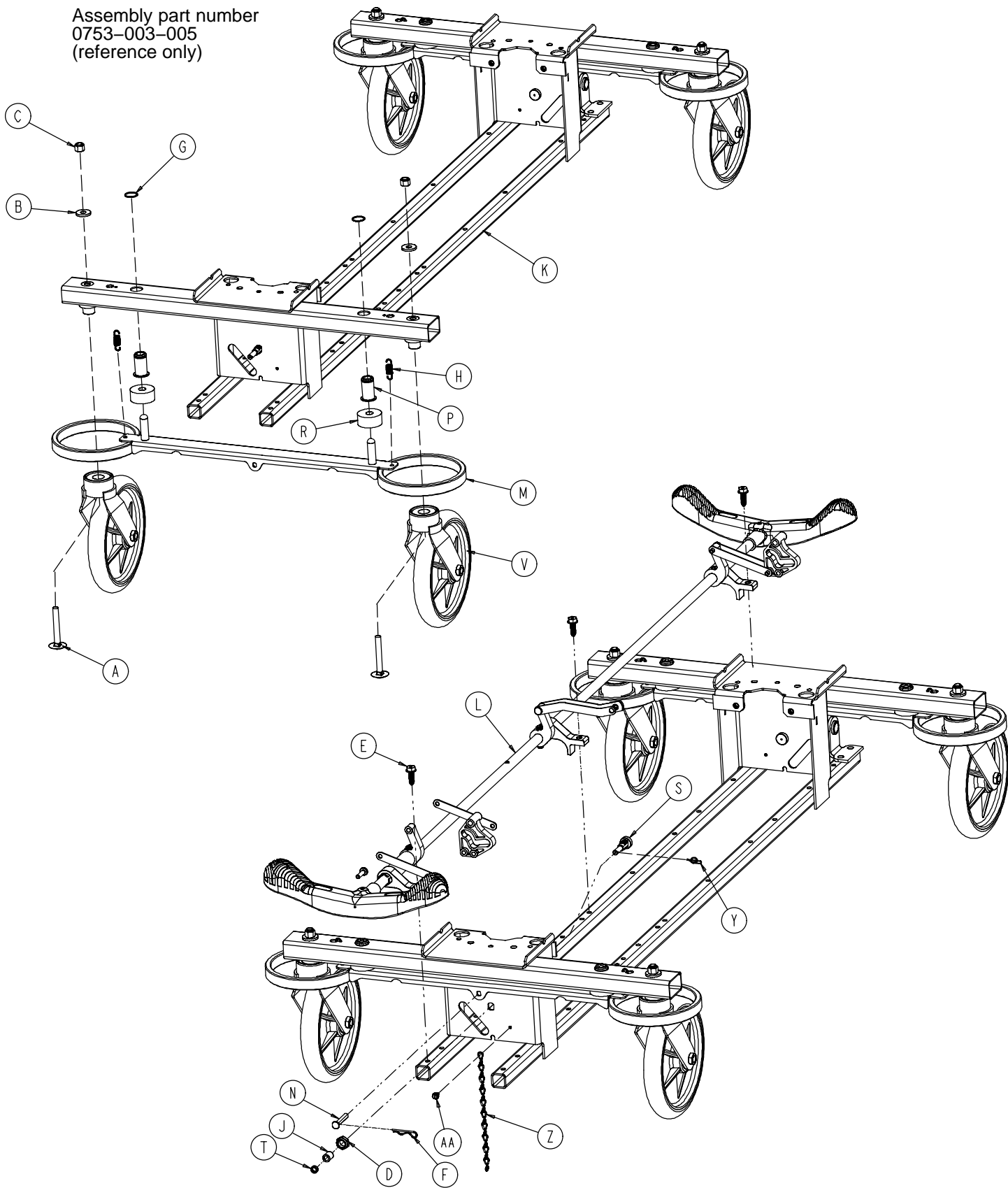
Assembly part number 0720-600-210 (reference only)



| Item | Part No. | Part Name | Qty. |
|------|--------------|-------------------------|------|
| A | 0023-288-000 | Hex Washer Hd, Screw | 10 |
| B | 0023-305-000 | Hex Washer Hd, Screw | 1 |
| C | (page 14) | Standard Brake Assembly | 1 |
| D | (page 18) | Fifth Wheel Assembly | 1 |
| E | 0753-006-148 | Cam Bearing | 1 |
| F | 0753-010-007 | Reservoir Clamp | 2 |
| G | 0720-201-032 | Upper Tower (not shown) | 2 |

Base Assembly w/Standard Brakes (Fifth Wheel Base)

Assembly part number
0753-003-005
(reference only)

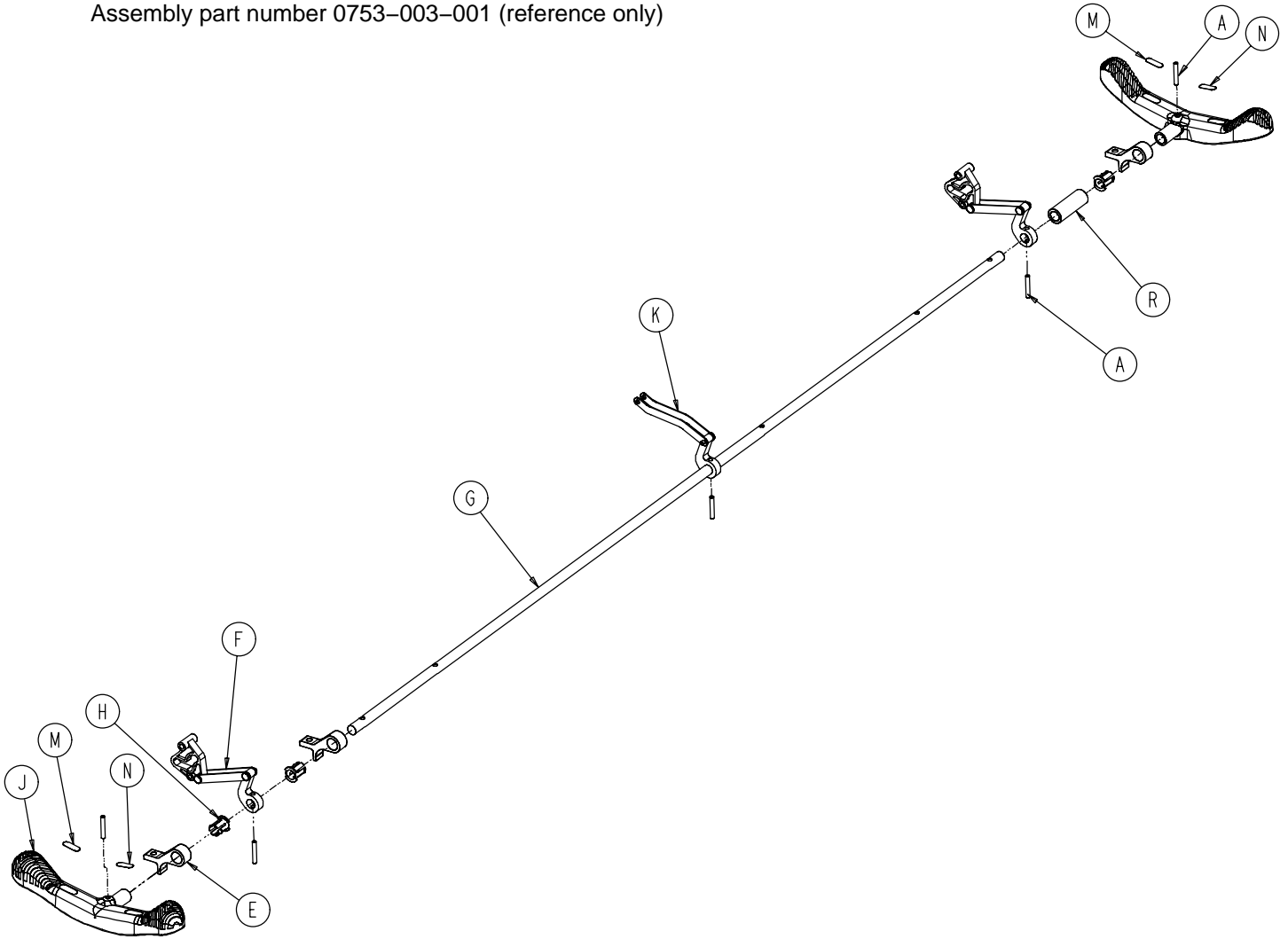


Base Assembly w/Standard Brakes (Fifth Wheel Base)

| Item | Part No. | Part Name | Qty. |
|------|--------------|-----------------------------|------|
| A | 0005-039-000 | Step Bolt | 4 |
| B | 0011-262-000 | Washer | 4 |
| C | 0016-035-000 | Nylock Hex Nut | 4 |
| D | 0016-049-000 | Nylock Hex Nut | 2 |
| E | 0023-288-000 | Hex Washer Hd. Screw | 3 |
| F | 0027-012-000 | Hitch Pin | 2 |
| G | 0028-037-000 | External Retaining Ring | 4 |
| H | 0038-439-000 | Extension Spring | 4 |
| J | 0081-272-000 | Roller Bearing | 2 |
| K | 0753-001-001 | Base Frame | 1 |
| L | (page 16) | Brake Rod Assembly | 1 |
| M | 0753-003-006 | Brake Ring | 2 |
| N | 0753-003-066 | Clevis Pin | 2 |
| P | 0753-003-079 | Caster Tube Brake Pin Guide | 4 |
| R | 0753-003-121 | Brake Cushion | 4 |
| S | 0753-003-130 | Bearing Pivot Support | 2 |
| T | 0753-003-131 | Spacer | 2 |
| V | (page 20) | Caster Assembly | 4 |
| Y | 0027-019-000 | Rue Ring Cotter Pin | 2 |
| Z | 0753-010-012 | Ground Chain | 1 |
| AA | 0023-025-000 | H. Washer Hd. Tapping Screw | 1 |

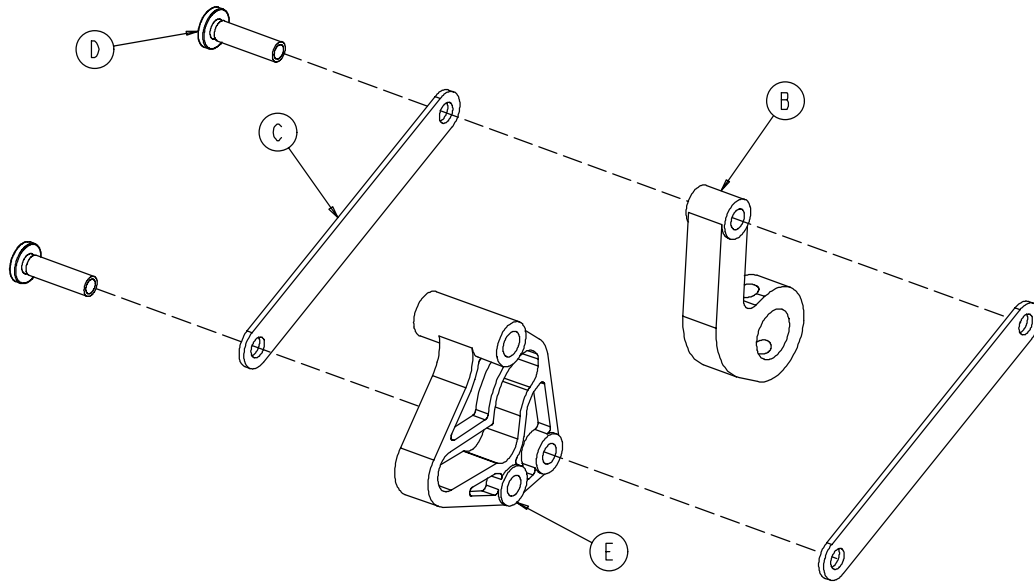
Brake Rod Assembly

Assembly part number 0753-003-001 (reference only)



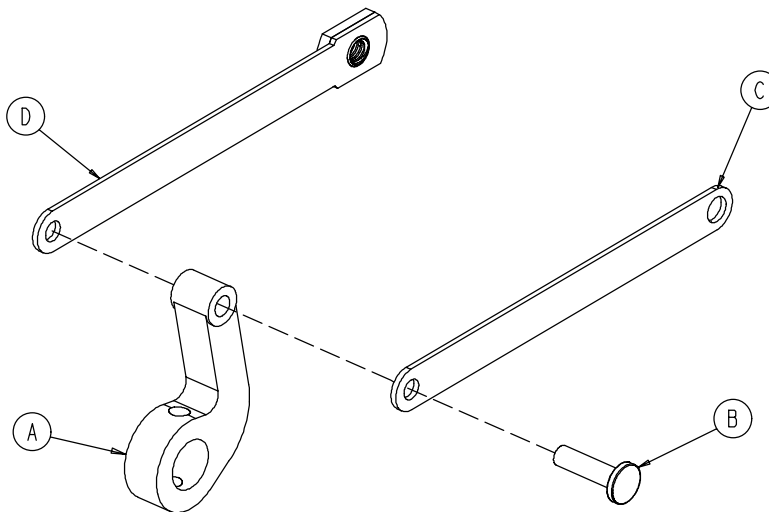
| Item | Part No. | Part Name | Qty. |
|------|--------------|---------------------|------|
| A | 0026-067-000 | Slotted Spring Pin | 2 |
| E | 0753-003-004 | Brake Rod Support | 3 |
| F | (page 17) | Drive Link Assembly | 2 |
| G | 0753-003-014 | Brake Rod | 1 |
| H | 0753-003-015 | Nyliner | 3 |
| J | 0753-003-099 | Butterfly "V" Pedal | 2 |
| K | (page 17) | Drive Link Assembly | 1 |
| M | 1210-201-335 | Red Brake Label | 2 |
| N | 1210-201-336 | Green Steer Label | 2 |
| R | 0753-003-133 | Retainment Spacer | 1 |

0753-003-010 Drive Link Assembly



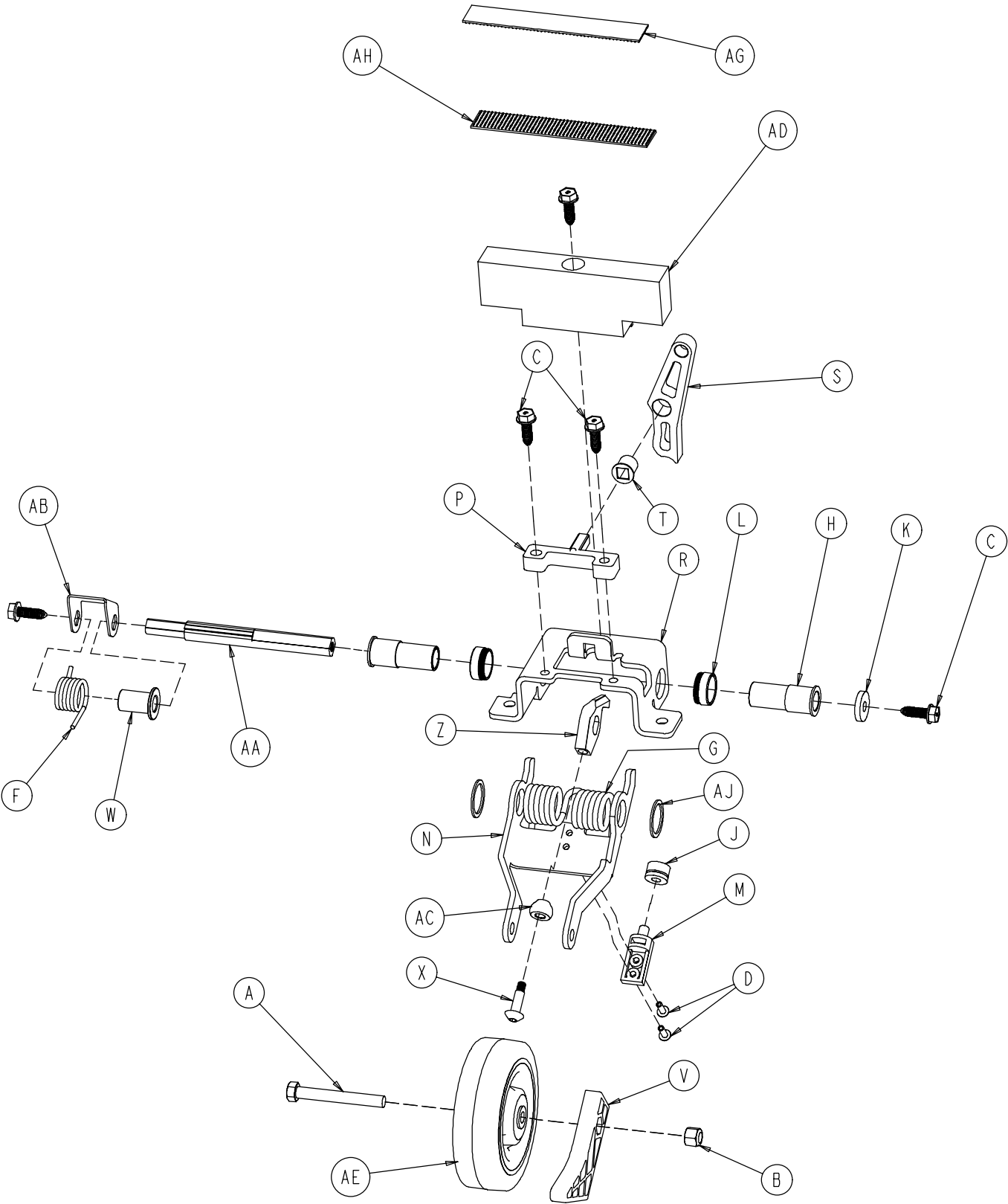
| Item | Part No. | Part Name | Qty. |
|------|--------------|-----------------------------|------|
| B | 0753-003-011 | Brake Rod Drive Link | 1 |
| C | 0753-003-061 | Brake Cam Drive Link | 2 |
| D | 0753-003-098 | Flat Hd. Semi-Tubular Rivet | 2 |
| E | 0753-003-102 | Brake Cam | 1 |

0753-006-135 Drive Link Assembly



| Item | Part No. | Part Name | Qty. |
|------|--------------|--------------------------|------|
| A | 0753-003-011 | Brake Rod Drive Link | 1 |
| B | 0753-003-098 | Semi-Tubular Rivet | 1 |
| C | 0753-006-122 | 5th Wheel Cam Drive Link | 1 |
| D | 0753-006-147 | Fifth Wheel Drive Link | 1 |

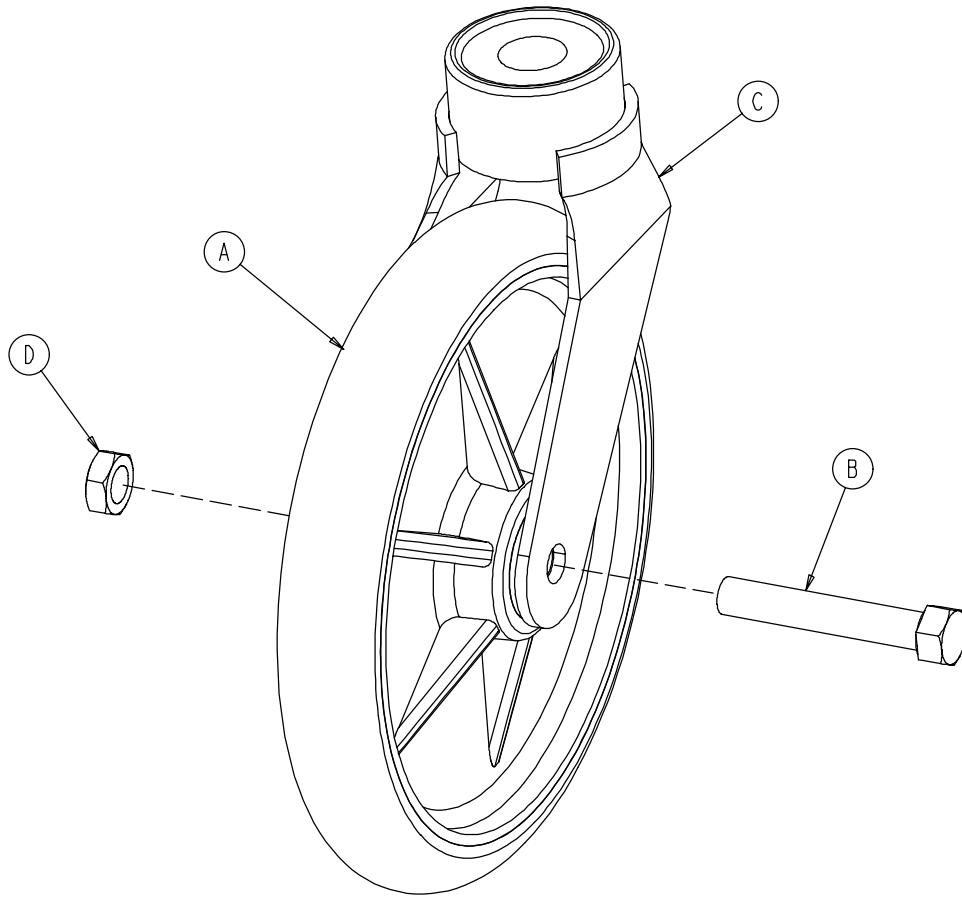
0753-006-130 Fifth Wheel Assembly



0753-006-130 Fifth Wheel Assembly

| Item | Part No. | Part Name | Qty. |
|-------------|-----------------|------------------------------|-------------|
| A | 0003-083-000 | Hex Hd. Cap Screw | 1 |
| B | 0016-035-000 | Nylock Hex Nut | 1 |
| C | 0023-288-000 | Hex Washer Hd. Screw | 5 |
| D | 0025-050-000 | Rivet | 2 |
| F | 0753-006-074 | Torsion Spring | 1 |
| G | 0753-006-075 | Torsion Spring | 1 |
| H | 0753-006-097 | Drive Shaft Bearing | 2 |
| J | 0753-006-106 | Dampener | 1 |
| K | 0753-006-108 | Thrust Washer | 1 |
| L | 0753-006-115 | Bearing | 2 |
| M | 0753-006-120 | Bumper Mounting Pin | 1 |
| N | 0753-006-126 | Wheel Bracket | 1 |
| P | 0753-006-133 | Cam Pivot Block | 1 |
| R | 0753-006-134 | Fifth Wheel Mounting Bracket | 1 |
| S | 0753-006-142 | Fifth Wheel Cam | 1 |
| T | 0753-006-143 | Cam Bearing | 1 |
| V | 0753-006-149 | 5th Wheel Ramp | 1 |
| W | 0753-006-152 | Spring Spacer | 1 |
| X | 0753-006-153 | Roller Stem | 1 |
| Z | 0753-006-198 | Drive Pin | 1 |
| AA | 0753-006-223 | Drive Shaft | 1 |
| AB | 0753-006-227 | Return Spring Hook | 1 |
| AC | 0753-006-277 | Roller | 1 |
| AD | 0753-010-045 | Hood Standoff | 1 |
| AE | 1210-001-147 | Wheel | 1 |
| AG | 0753-006-280 | Dual Lock | 1 |
| AH | 0753-006-281 | Dual Lock | 1 |
| AJ | 0011-360-000 | Washer | 2 |

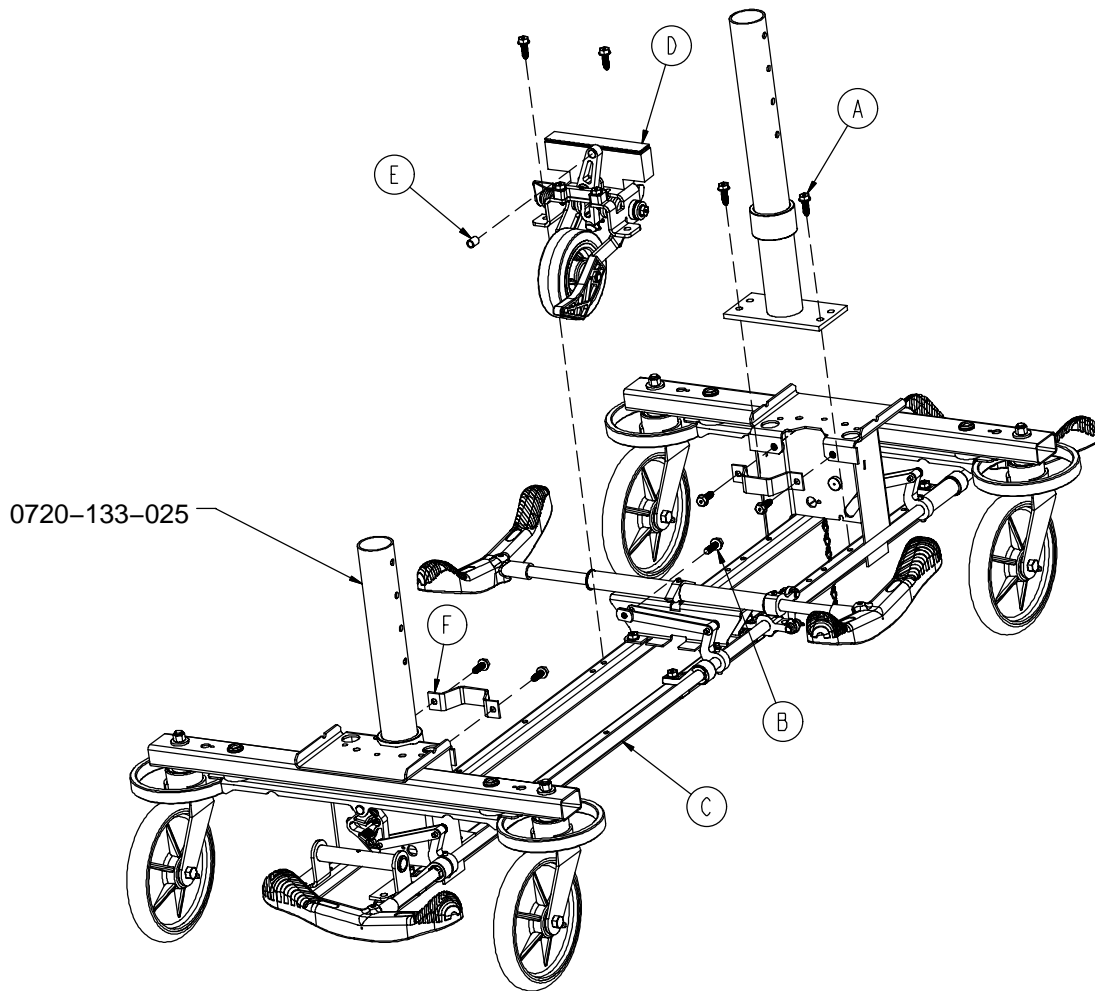
0753-010-020 8" Caster Assembly



| Item | Part No. | Part Name | Qty. |
|------|--------------|-----------------------|------|
| A | 0715-002-025 | Wheel | 1 |
| B | 0003-099-000 | Hex Hd. Cap Screw | 1 |
| C | 0753-010-021 | Caster Horn w/Bearing | 1 |
| D | 0016-060-000 | Centerlock Nut | 1 |

Fixed Height Base Assembly with 4-Sided Brakes

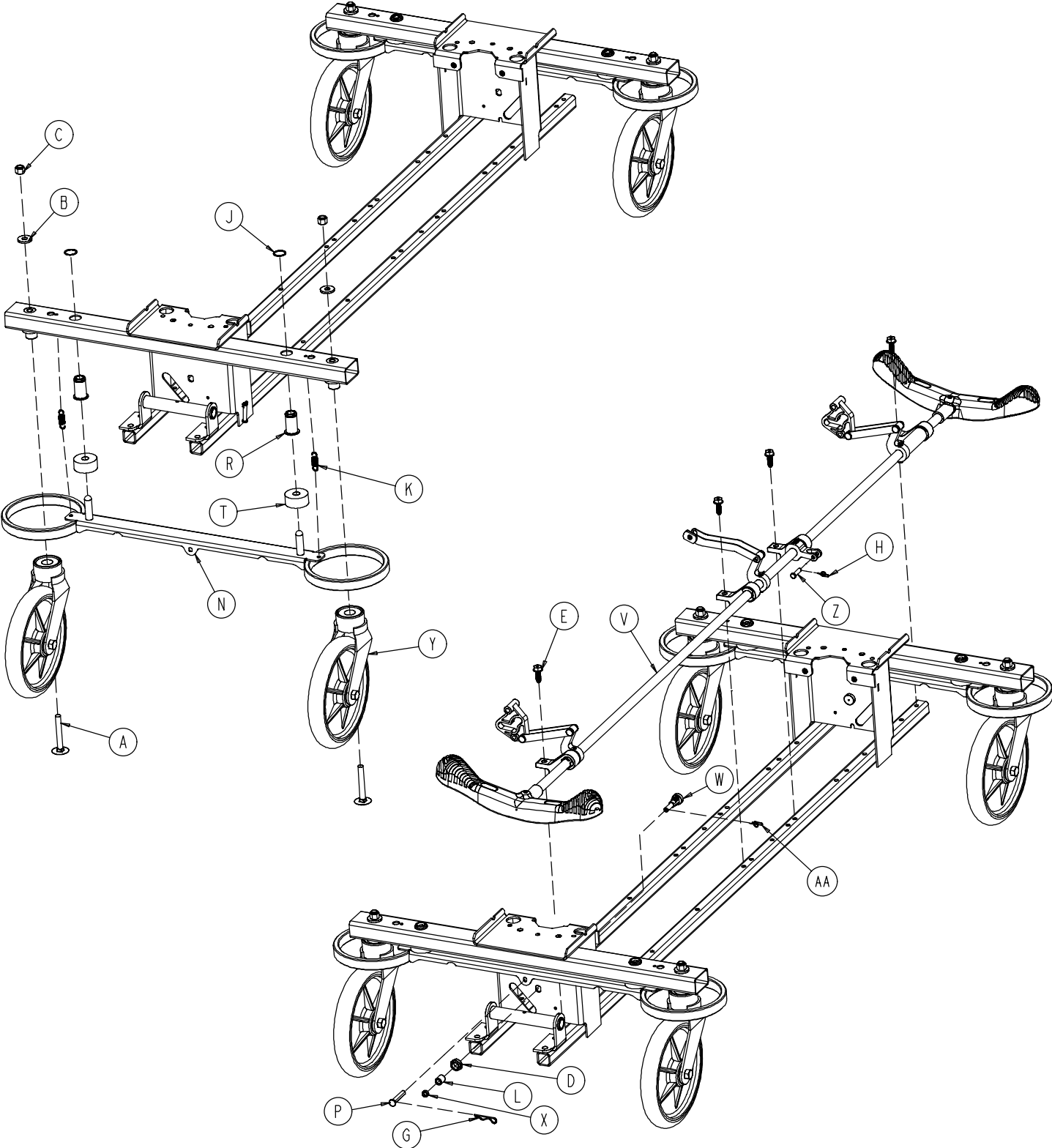
Assembly part number 0720-600-310 (reference only)



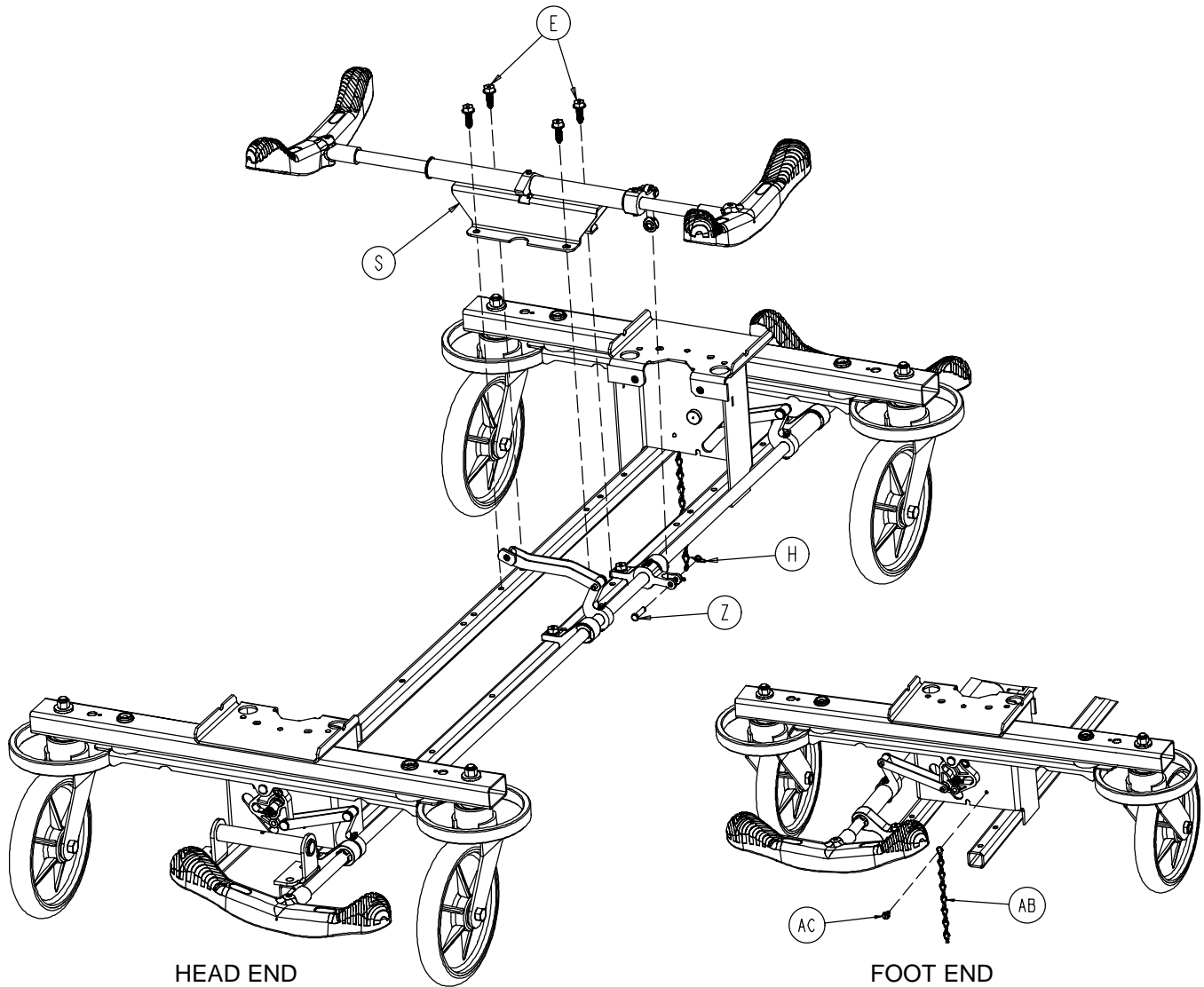
| Item | Part No. | Part Name | Qty. |
|------|--------------|-----------------------------|------|
| A | 0023-288-000 | Hex Washer Hd. Screw | 10 |
| B | 0023-305-000 | Hex Washer Hd. Screw | 1 |
| C | (page 22) | Side Control Brake Assembly | 1 |
| D | (page 18) | Fifth Wheel Assembly | 1 |
| E | 0753-006-148 | Cam Bearing | 1 |
| F | 0753-010-007 | Reservoir Clamp | 2 |
| G | 0720-201-032 | Upper Tower (not shown) | 2 |

Base Assembly with 4-Sided Brakes

Assembly part number 0753-003-120 (reference only)



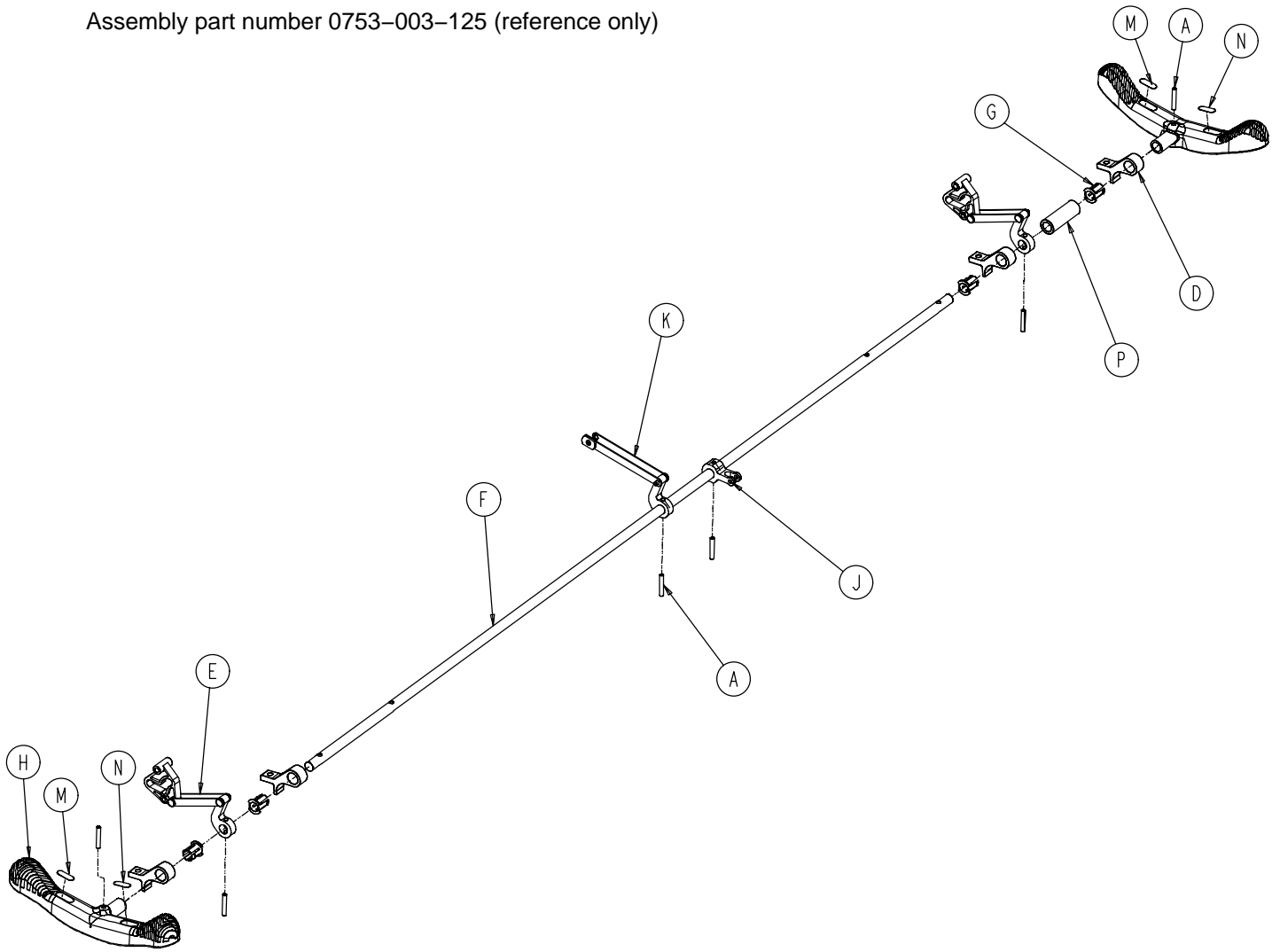
Base Assembly with 4-Sided Brakes



| Item | Part No. | Part Name | Qty. | Item | Part No. | Part Name | Qty. |
|------|--------------|-------------------------|------|------|--------------|-------------------------|------|
| A | 0005-039-000 | Step Bolt | 4 | P | 0753-003-066 | Clevis Pin | 2 |
| B | 0011-262-000 | Washer | 4 | R | 0753-003-079 | Brake Pin Guide | 4 |
| C | 0016-035-000 | Nylock Hex Nut | 4 | S | (page 24) | Side Brake Rod Ass'y | 1 |
| D | 0016-049-000 | Nylock Hex Nut | 2 | T | 0753-003-121 | Brake Cushion | 4 |
| E | 0023-288-000 | Hex Washer Hd. Screw | 8 | V | (page 25) | Brake Rod Assembly | 1 |
| G | 0027-012-000 | Hitch Pin | 2 | W | 0753-003-130 | Bearing Pivot Support | 2 |
| H | 0027-020-000 | Rue Ring Cotter | 1 | X | 0753-003-131 | Spacer | 2 |
| J | 0028-037-000 | External Retaining Ring | 4 | Y | (page 20) | Caster Assembly | 4 |
| K | 0038-439-000 | Extension Spring | 4 | Z | 0026-340-000 | Clevis Pin | 1 |
| L | 0081-272-000 | Roller Bearing | 2 | AA | 0027-019-000 | Rue Ring Cotter Pin | 2 |
| M | 0753-001-001 | Base Weldment | 1 | AB | 0753-010-012 | Ground Chain | 1 |
| N | 0753-003-006 | Brake Ring Weldment | 2 | AC | 0023-025-000 | H. Washer Hd. Tap. Scr. | 1 |

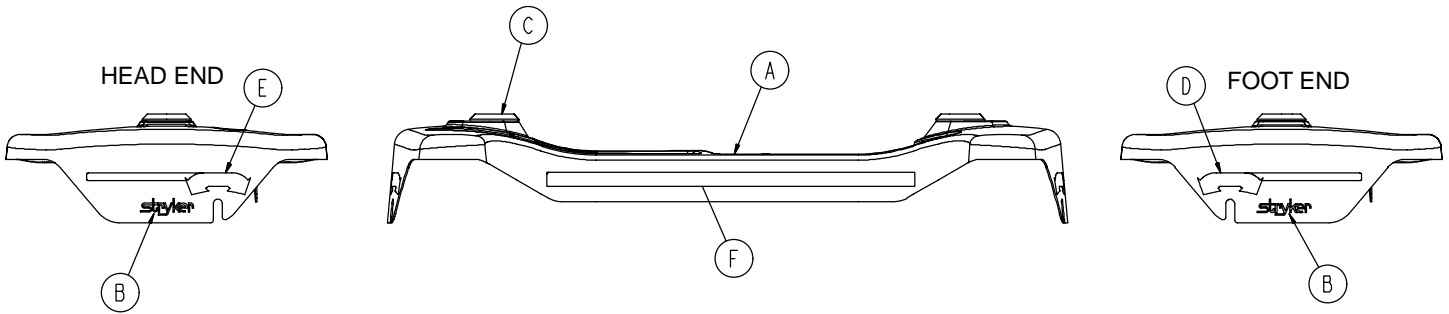
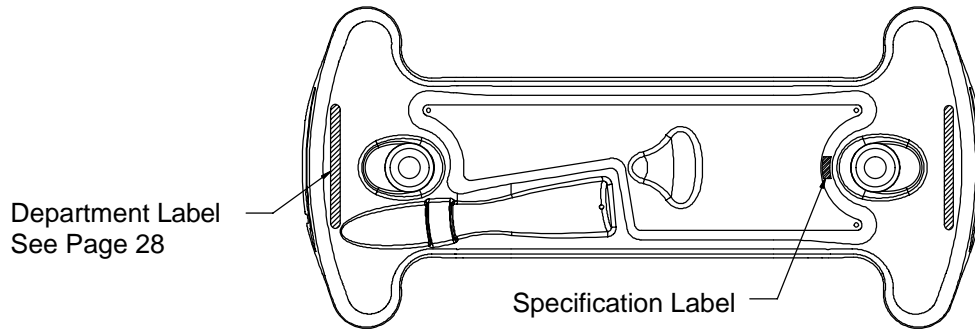
Brake Rod Assembly

Assembly part number 0753-003-125 (reference only)



| Item | Part No. | Part Name | Qty. |
|------|--------------|---------------------|------|
| A | 0026-067-000 | Slotted Spring Pin | 6 |
| D | 0753-003-004 | Brake Rod Support | 4 |
| E | (page 17) | Drive Link Assembly | 2 |
| F | 0753-003-014 | Brake Rod | 1 |
| G | 0753-003-015 | Brake Rod Nyliner | 4 |
| H | 0753-003-099 | Butterfly "V" Pedal | 2 |
| J | 0753-003-112 | Side Control Link | 1 |
| K | (page 17) | Drive Link Assembly | 1 |
| M | 1210-201-335 | Red Brake Label | 2 |
| N | 1210-201-336 | Green Steer Label | 2 |
| P | 0753-003-133 | Retainment Spacer | 1 |

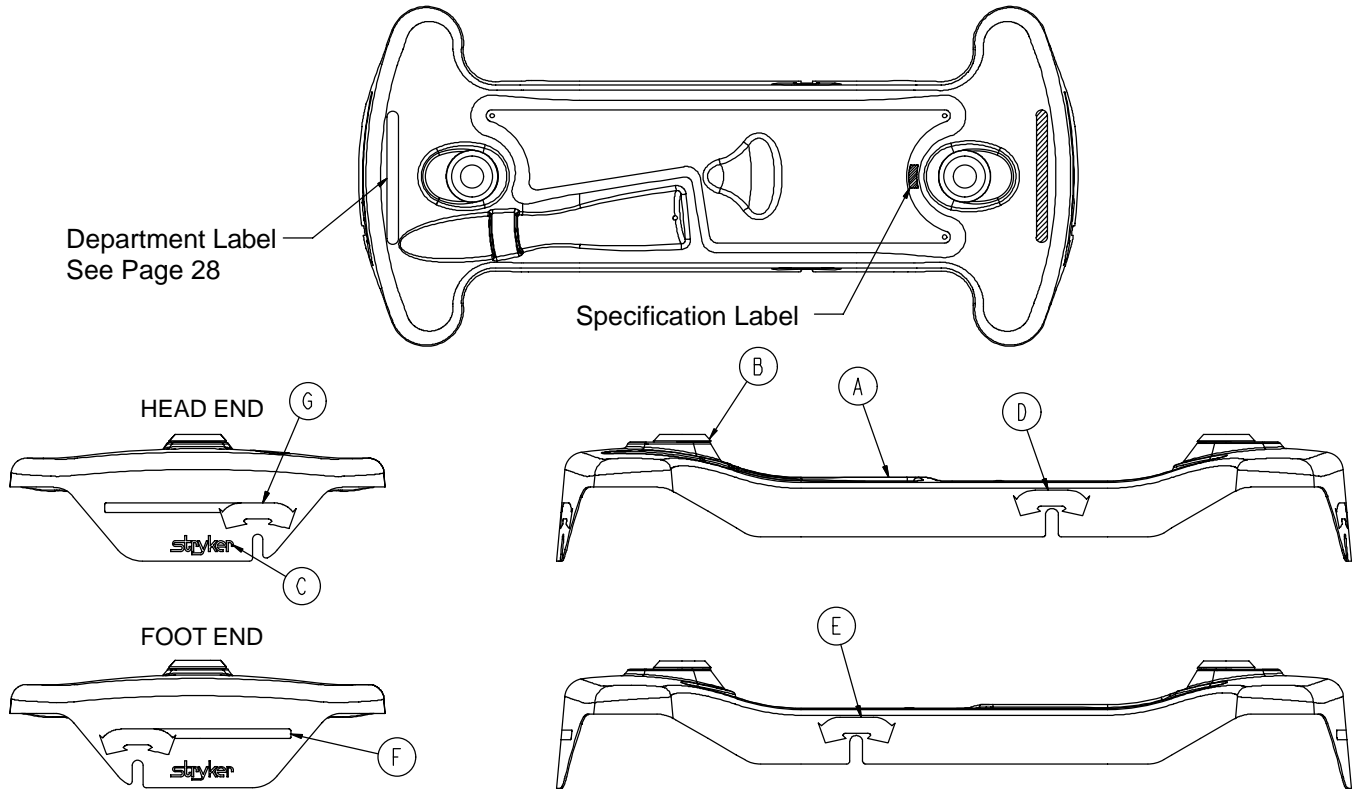
Base with Standard Brakes Labeling Assembly



| Item | Part No. | Part Name | Qty. |
|------|--------------|--------------------|------|
| A | 0753-010-046 | Base Hood | 1 |
| B | 0946-201-060 | Stryker Logo Label | 2 |
| C | 0946-421-005 | Grommet | 2 |

| Color Set P/N | Item D Brake/Steer Label, Foot End | Item E Brake/Steer Label, Head End | Item F Side Stripe | Litter Bumper Strip |
|------------------------|------------------------------------|------------------------------------|--------------------|---------------------|
| RED 0720-800-021 | 0753-010-051 | 0753-010-017 | 1001-800-013 | 1010-700-015 |
| PURPLE 0720-800-022 | 0753-010-151 | 0753-010-170 | 1001-800-023 | 1010-700-025 |
| GREEN 0720-800-023 | 0753-010-251 | 0753-010-270 | 1001-800-033 | 1010-700-035 |
| GRAY 0720-800-024 | 0753-010-351 | 0753-010-370 | 1001-800-043 | 1010-700-045 |
| TEAL 0720-800-025 | 0753-010-451 | 0753-010-470 | 1001-800-053 | 1010-700-055 |
| PINK 0720-800-026 | 0753-010-551 | 0753-010-570 | 1001-800-063 | 1010-700-065 |
| BLUE 0720-800-027 | 0753-010-651 | 0753-010-670 | 1001-800-073 | 1010-700-075 |

Base with 4-Sided Brakes Labeling Assembly



| Item | Part No. | Part Name | Qty. |
|------|--------------|--------------------------|------|
| A | 0753-010-047 | Base Hood | 1 |
| B | 0946-421-005 | Grommet | 2 |
| C | 0946-201-060 | Stryker Logo Label | 2 |
| D | 0753-010-018 | Brake/Steer Label, Right | 1 |
| E | 0753-010-019 | Brake/Steer Label, Left | 1 |

| Color Set Part Number | Item F Brake/Steer Label, Foot End | Item G Brake/Steer Label, Head End | Litter Bumper Strip |
|--------------------------|---------------------------------------|---------------------------------------|---------------------|
| RED 0720-800-021 | 0753-010-051 | 0753-010-017 | 1010-700-015 |
| PURPLE 0720-800-022 | 0753-010-151 | 0753-010-170 | 1010-700-025 |
| GREEN 0720-800-023 | 0753-010-251 | 0753-010-270 | 1010-700-035 |
| GRAY 0720-800-024 | 0753-010-351 | 0753-010-370 | 1010-700-045 |
| TEAL 0720-800-025 | 0753-010-451 | 0753-010-470 | 1010-700-055 |
| PINK 0720-800-026 | 0753-010-551 | 0753-010-570 | 1010-700-065 |
| BLUE 0720-800-027 | 0753-010-651 | 0753-010-670 | 1010-700-075 |

Department Labels

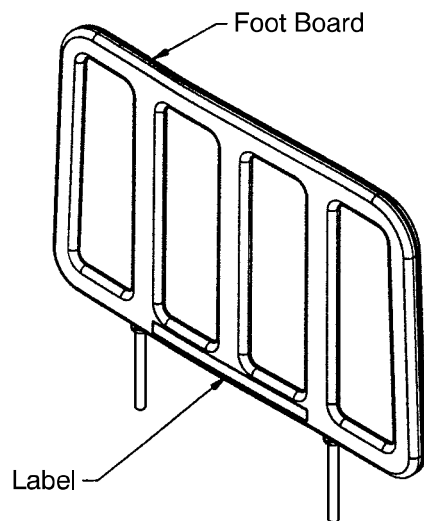
BASE HOOD DEPARTMENT LABELS

| Department | Label Part Number |
|--------------------|-------------------|
| Emergency | 1010-900-215 |
| PACU | 1010-900-220 |
| Transport | 1010-900-225 |
| Surgery | 1010-900-230 |
| Extended Stay | 1010-900-235 |
| Maternity | 1010-900-240 |
| Endoscopy | 1010-900-245 |
| Radiology | 1010-900-250 |
| Nuclear Medicine | 1010-900-255 |
| Ambulatory Surgery | 1010-900-260 |
| G.I. Lab | 1010-900-265 |
| Cath. Lab | 1010-900-270 |
| Same Day Surgery | 1010-900-275 |
| Cardio. | 1010-900-280 |
| Ultrasound | 1010-900-285 |

NOTE

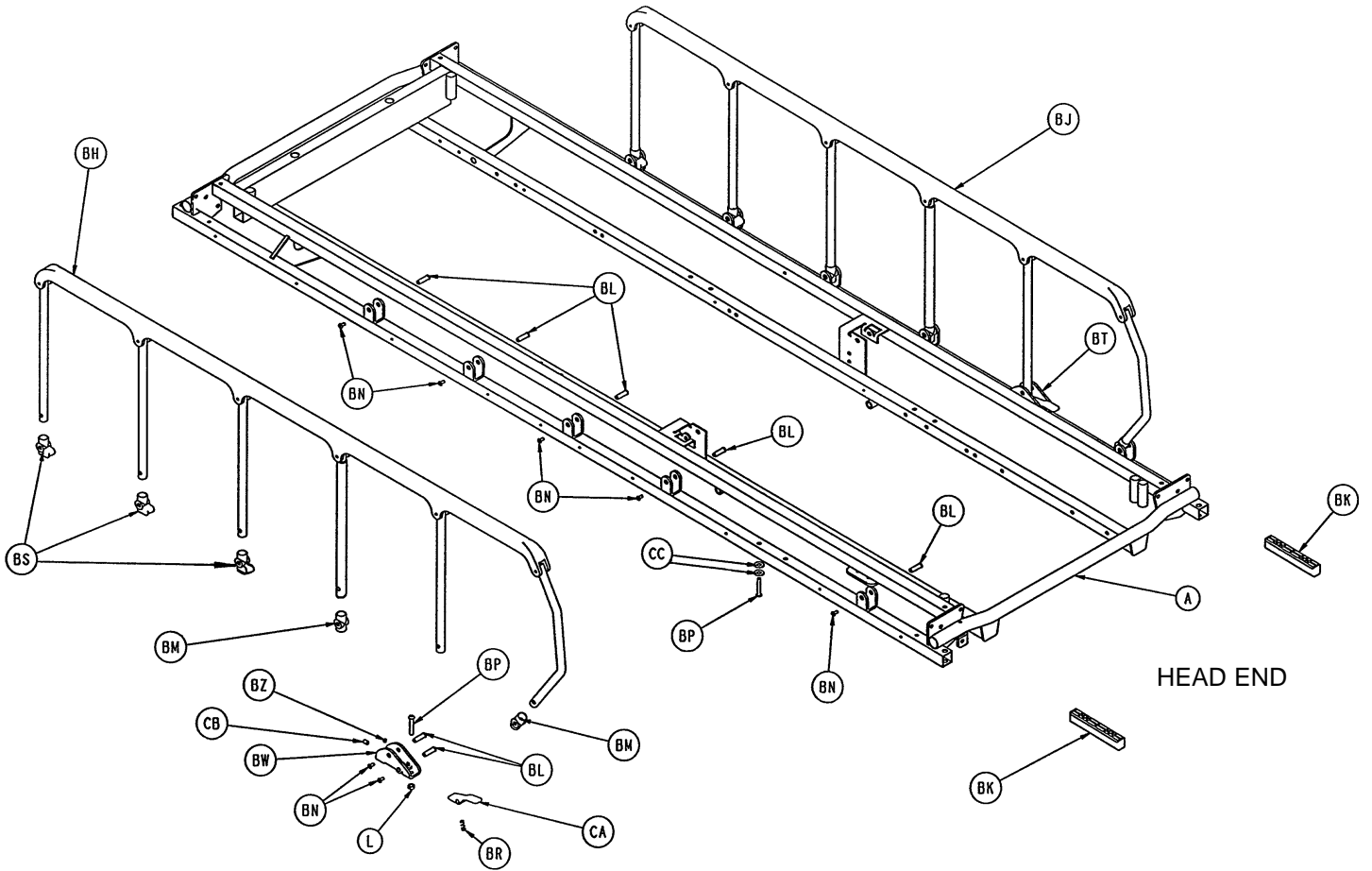
All base hood department labels are quantity of two.

FOOT BOARD DEPARTMENT LABELS



| Department | Label Part No. |
|--------------------|----------------|
| Demo Stryker | 1010-900-186 |
| Ophthalmology | 1010-900-187 |
| Outpatient Surgery | 1010-900-188 |
| Recovery | 1010-900-189 |
| Trauma | 1010-900-190 |
| Urgence | 1010-900-191 |
| Special (Blank) | 1010-900-192 |

Litter Assembly

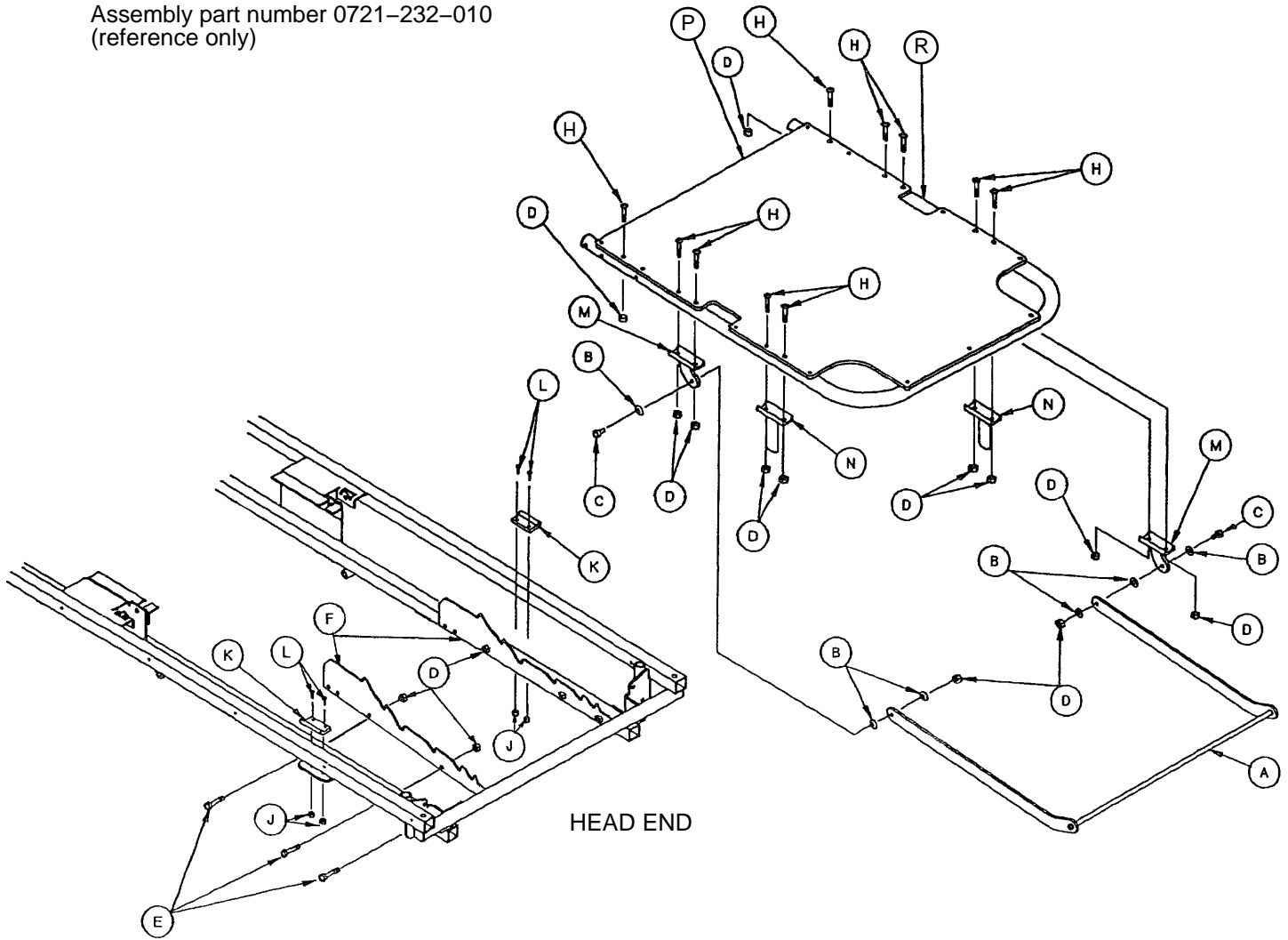


Litter Assembly

| Item | Part No. | Part Name | Qty. | Item | Part No. | Part Name | Qty. |
|------|--------------|---------------------------|------|------|--------------|------------------------------|------|
| A | 0721-201-020 | Frame Assembly | 1 | AW | 0720-201-021 | Riser Stop | 2 |
| B | 0028-072-000 | Retaining Ring | 2 | AZ | 1001-034-025 | End Plug | 2 |
| C | 1001-040-012 | Foot Board Receptacle | 2 | BA | 0014-002-000 | Flat Washer | 6 |
| D | 0023-104-000 | Self-Tapping Screw | 8 | BB | 0003-047-000 | Hex Hd. Cap Screw | 10 |
| E | 0926-400-142 | Corner Wheel | 4 | BC | 0027-004-000 | Cotter Pin | 4 |
| F | 1010-201-027 | Bumper Extrusion | 2 | BE | 0003-078-000 | Hex Hd. Cap Screw | 4 |
| H | 1001-001-036 | End Plug | 2 | BF | 0025-079-000 | Pop Rivet | 8 |
| L | 0016-028-000 | Nylock Hex Nut | 16 | BH | (page 36) | Siderail Ass'y, Left | 1 |
| M | 0016-036-000 | Stover Lock Nut | 2 | BJ | (page 36) | Siderail Ass'y, Right | 1 |
| N | 0016-035-000 | Stover Lock Nut | 4 | BK | 1010-026-069 | Lock Support | 2 |
| P | 0025-038-000 | Pop Rivet | 20 | BL | 0721-026-066 | Pivot Screw | 14 |
| R | 0004-201-000 | Soc. Hd. Cap Screw | 4 | BM | 0721-026-069 | Upright Sleeve | 4 |
| S | 0011-179-000 | Nylon Flat Washer | 2 | BN | 0004-136-000 | But. Hd. Cap Screw | 14 |
| W | 0004-103-000 | Fowler Pivot Bolt | 2 | BP | 0004-135-000 | But. Hd. Cap Screw | 4 |
| Z | 0014-021-000 | Washer | 18 | BR | 0038-220-000 | Compression Spring | 2 |
| AB | 1010-201-238 | Corner Cover, Slot Only | 2 | BS | 0721-026-068 | Upright Cradle | 6 |
| AC | 1010-201-239 | Corner Cover, Hole Only | 2 | BT | 1010-026-081 | Lock Housing Ass'y, Lt. | 1 |
| AD | 0037-010-000 | Hole Plug | 2 | BW | 1010-026-080 | Lock Housing Ass'y, Rt. | 1 |
| AE | 0025-122-000 | Pop Rivet | 36 | BZ | 0037-074-000 | Hole Plug | 6 |
| AF | 0037-059-000 | Hole Plug | 2 | CA | 0721-026-074 | Lock Handle, Machined | 2 |
| AJ | (page 26) | Siderail Bumper | 2 | CB | 0021-104-000 | Set Screw | 2 |
| AK | 0720-201-126 | Foot Section Skin | 1 | CC | 0011-002-000 | Flat Washer | 4 |
| AL | 0720-201-027 | Midsection Skin | 1 | CD | 0004-131-000 | But. Hd. Cap Screw | 1 |
| AM | 0720-201-122 | Foot Section Tube Ass'y | 1 | CE | 0015-004-000 | Hex Nut | 1 |
| AN | 0720-201-020 | Gatch Riser | 1 | CF | 0037-011-000 | Neoprene Cap | 1 |
| AP | 0720-201-023 | Midsection Support | 1 | CH | 0721-031-065 | Litter Hole Plug (not shown) | 4 |
| AR | 1001-034-024 | Thigh Support | 2 | CJ | 1210-800-008 | Patent Label | 1 |
| AS | 1001-034-029 | Slider Support Ass'y, Lt. | 1 | CK | 7900-001-102 | Velcro Pile | 24" |
| AT | 1001-034-030 | Slider Support Ass'y, Rt. | 1 | | | | |

Manual Fowler Assembly

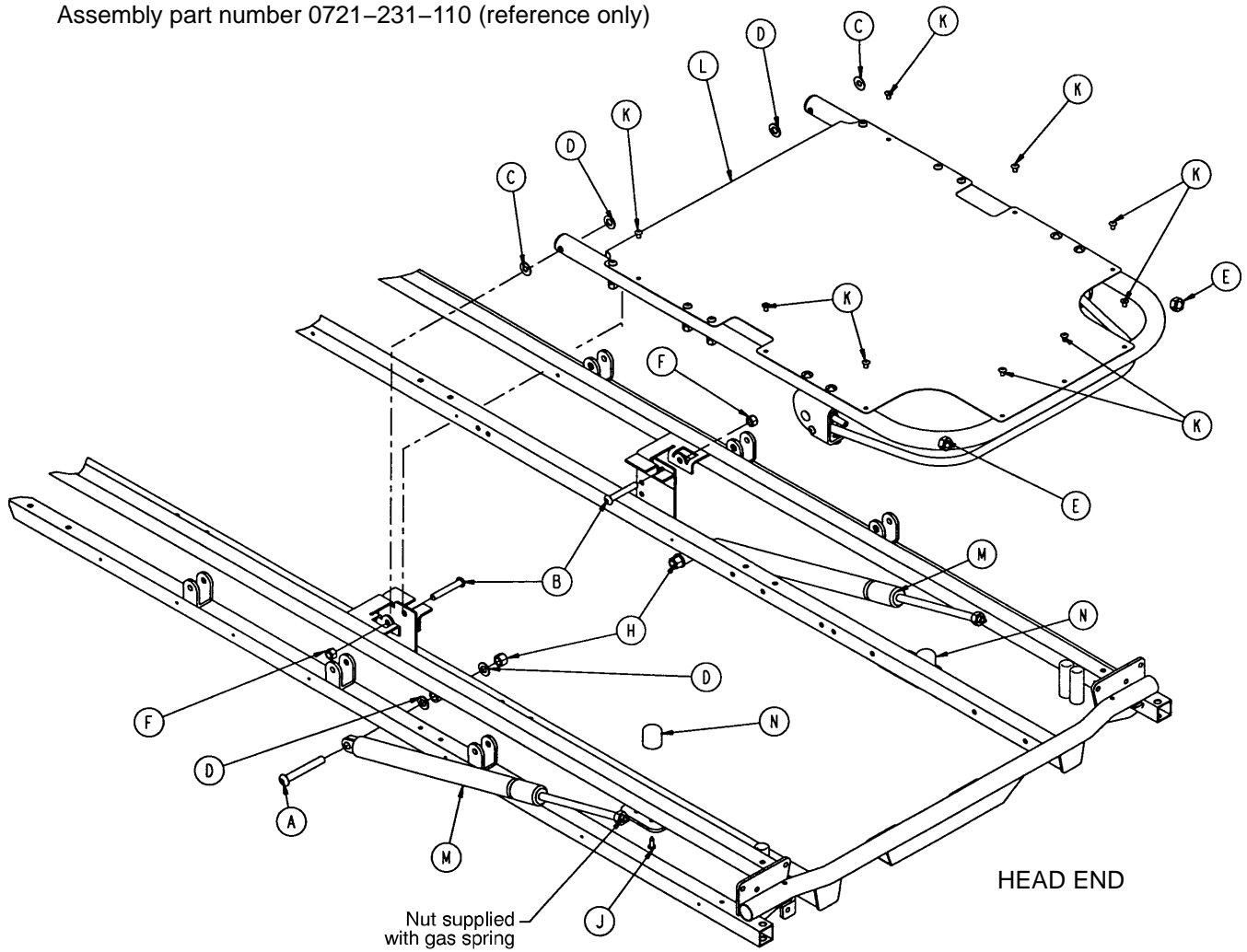
Assembly part number 0721-232-010
(reference only)



| Item | Part No. | Part Name | Qty. |
|------|--------------|--------------------|------|
| A | 0721-232-019 | Brace Assembly | 1 |
| B | 0014-002-000 | Nylon Flat Washer | 6 |
| C | 0003-357-000 | Hex Hd. Cap Screw | 2 |
| D | 0016-118-000 | Nylock Hex Nut | 18 |
| E | 0003-355-000 | Hex Hd. Cap Screw | 6 |
| F | 1001-032-022 | Position Bar Rest | 2 |
| H | 0004-135-000 | But. Hd. Cap Screw | 10 |
| J | 0016-003-000 | Lock Nut | 4 |
| K | 1001-032-026 | Manual Fowler Rest | 2 |
| L | 0004-169-000 | But. Hd. Cap Screw | 4 |
| M | 1001-032-023 | Tab Assembly | 2 |
| N | 1001-032-028 | Riser Assembly | 2 |
| P | 0721-231-012 | Fowler Skin | 1 |
| R | 0721-231-013 | Fowler Tube | 1 |

Pneumatic Fowler Assembly

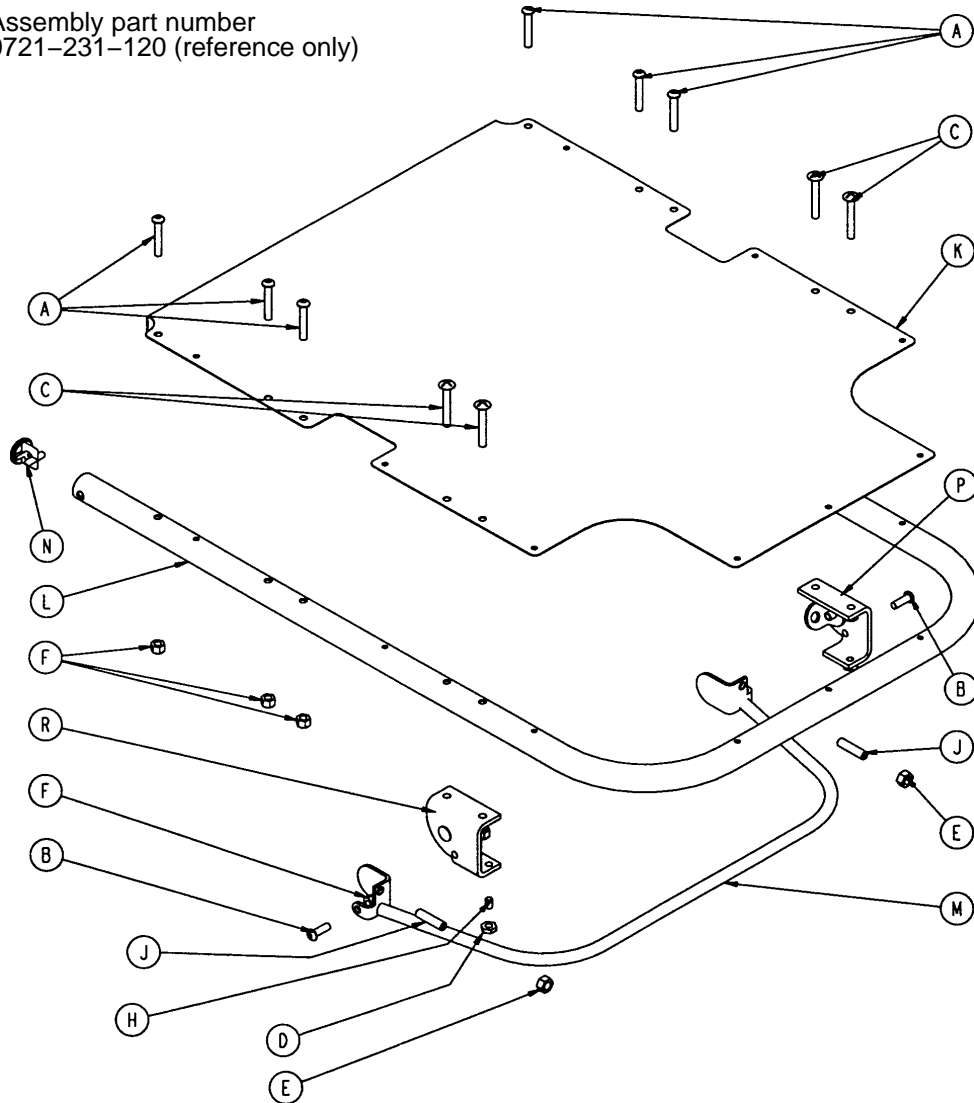
Assembly part number 0721-231-110 (reference only)



| Item | Part No. | Part Name | Qty. |
|------|--------------|-----------------------------|------|
| A | 0004-182-000 | Hex Soc. But. Hd. Cap Screw | 2 |
| B | 0004-183-000 | Hex Soc. But. Hd. Cap Screw | 2 |
| C | 0011-179-000 | Washer | 2 |
| D | 0014-021-000 | Washer | 8 |
| E | 0015-060-000 | Hex Jam Nut | 2 |
| F | 0016-116-000 | Hex Nut | 2 |
| H | 0016-117-000 | Hex Nut | 2 |
| J | 0023-256-000 | Self-Tapping Screw | 2 |
| K | 0025-122-000 | Blind Rivet | 9 |
| L | (page 34) | Pneumatic Fowler Assembly | 1 |
| M | 1010-031-078 | Gas Cylinder | 2 |
| N | 1211-031-031 | Pneumatic Fowler Rest | 2 |

Pneumatic Fowler Assembly

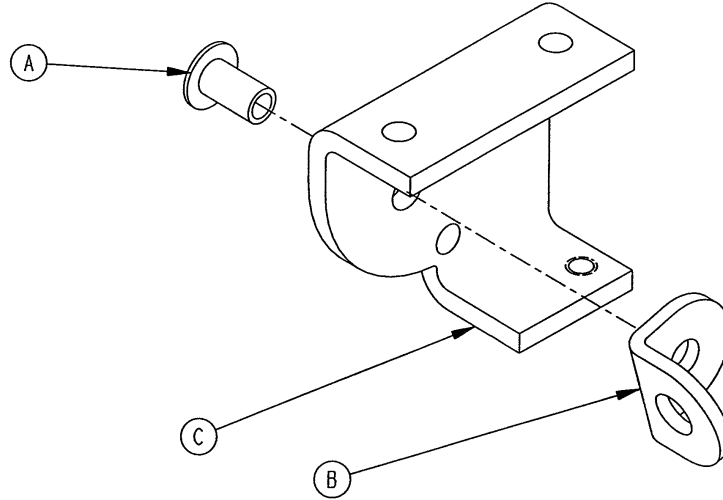
Assembly part number
0721-231-120 (reference only)



| Item | Part No. | Part Name | Qty. |
|------|--------------|-----------------------------|------|
| A | 0004-135-000 | But Hd. Cap Screw | 6 |
| B | 0004-161-000 | Hex Soc. But. Hd. Cap Screw | 2 |
| C | 0007-071-000 | Truss Hd. Mach. Screw | 4 |
| D | 0015-037-000 | Jam Nut | 2 |
| E | 0015-050-000 | Hex Nut | 2 |
| F | 0016-118-000 | Stover Lock Nut | 12 |
| H | 0021-125-000 | Set Screw | 2 |
| J | 0021-126-000 | Set Screw | 2 |
| K | 0721-231-012 | Fowler Skin | 1 |
| L | 0721-231-013 | Fowler Tube | 1 |
| M | 0721-231-118 | Trip Bar Assembly | 1 |
| N | 1001-001-036 | Hole Plug | 2 |
| P | (page 35) | Outer Housing Ass'y, Right | 1 |
| R | (page 35) | Outer Housing Ass'y, Left | 1 |

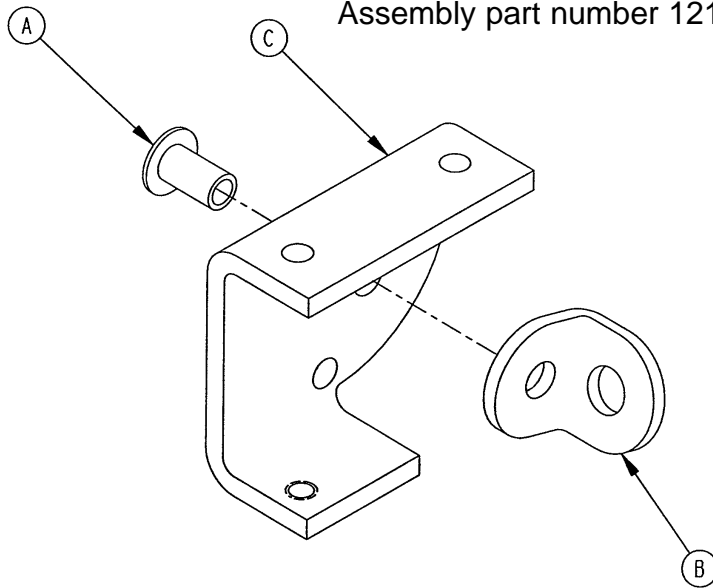
Pneumatic Fowler Outer Housing Assembly

Assembly part number 1210-031-106 (Right)



| Item | Part No. | Part Name | Qty. |
|------|--------------|----------------------|------|
| A | 0025-144-000 | Semi-Tubular Rivet | 1 |
| B | 1210-031-103 | Pivot Tab | 1 |
| C | 1210-031-104 | Outer Housing, Right | 1 |

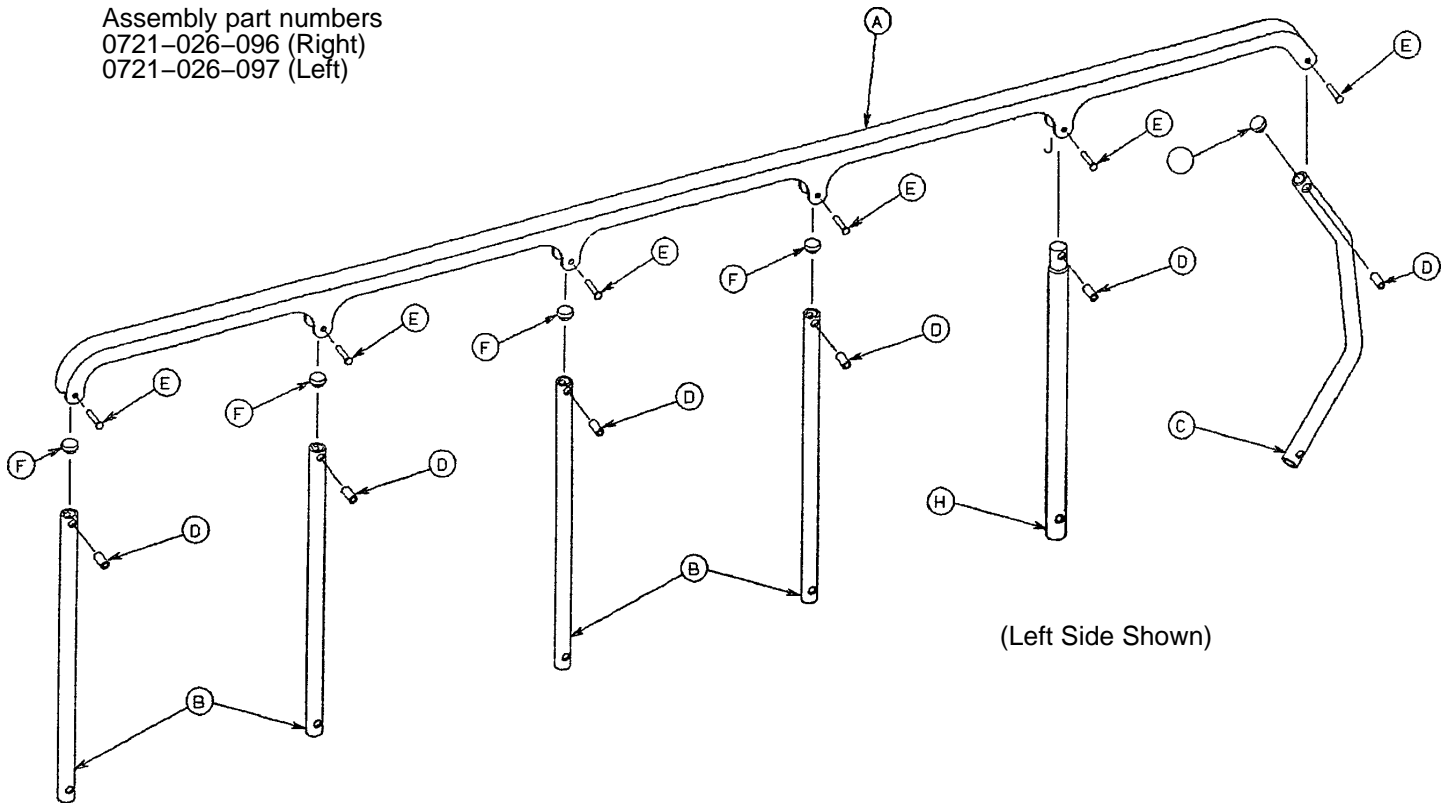
Assembly part number 1210-031-107 (Left)



| Item | Part No. | Part Name | Qty. |
|------|--------------|---------------------|------|
| A | 0025-144-000 | Semi-Tubular Rivet | 1 |
| B | 1210-031-103 | Pivot Tab | 1 |
| C | 1210-031-105 | Outer Housing, Left | 1 |

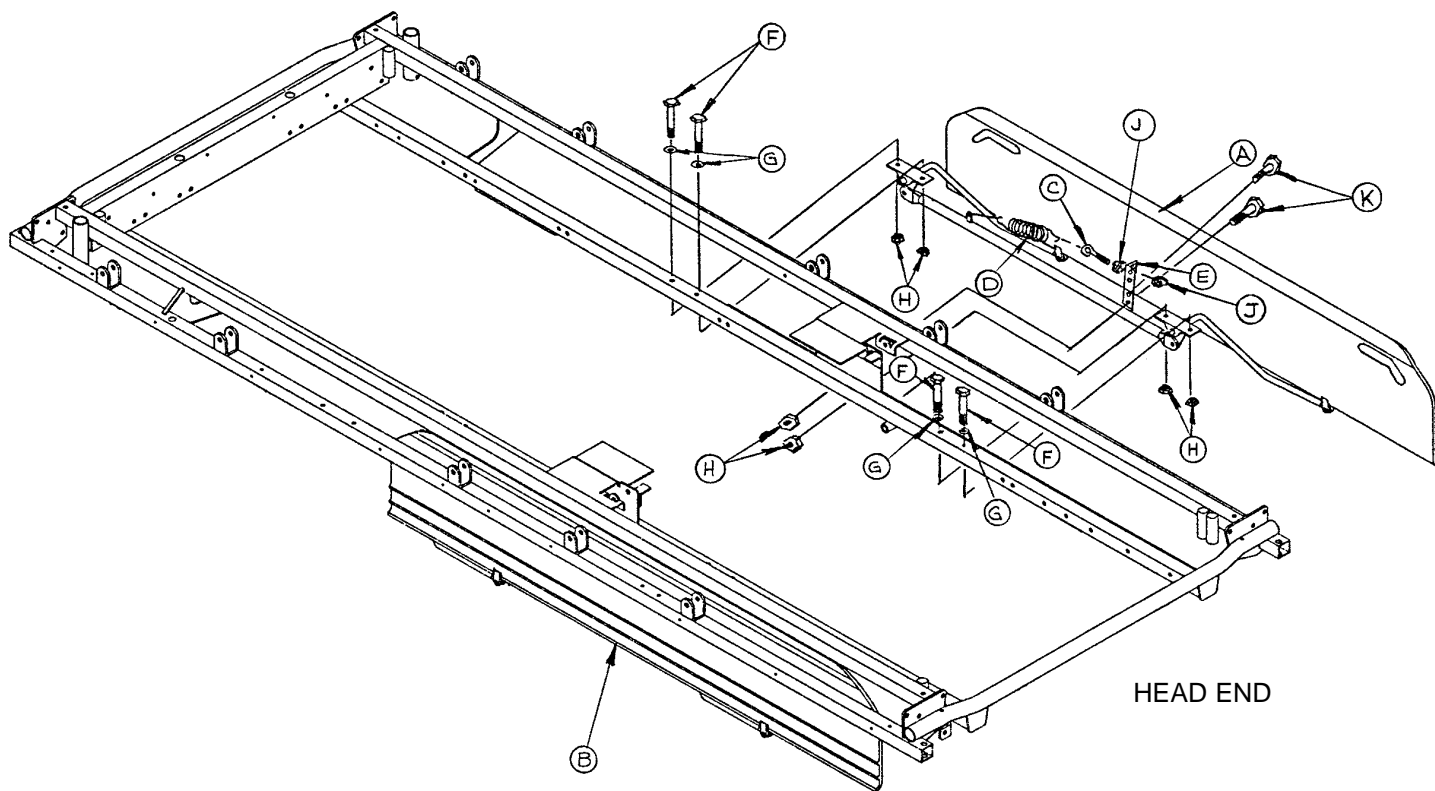
Siderail Assembly, Right & Left

Assembly part numbers
 0721-026-096 (Right)
 0721-026-097 (Left)



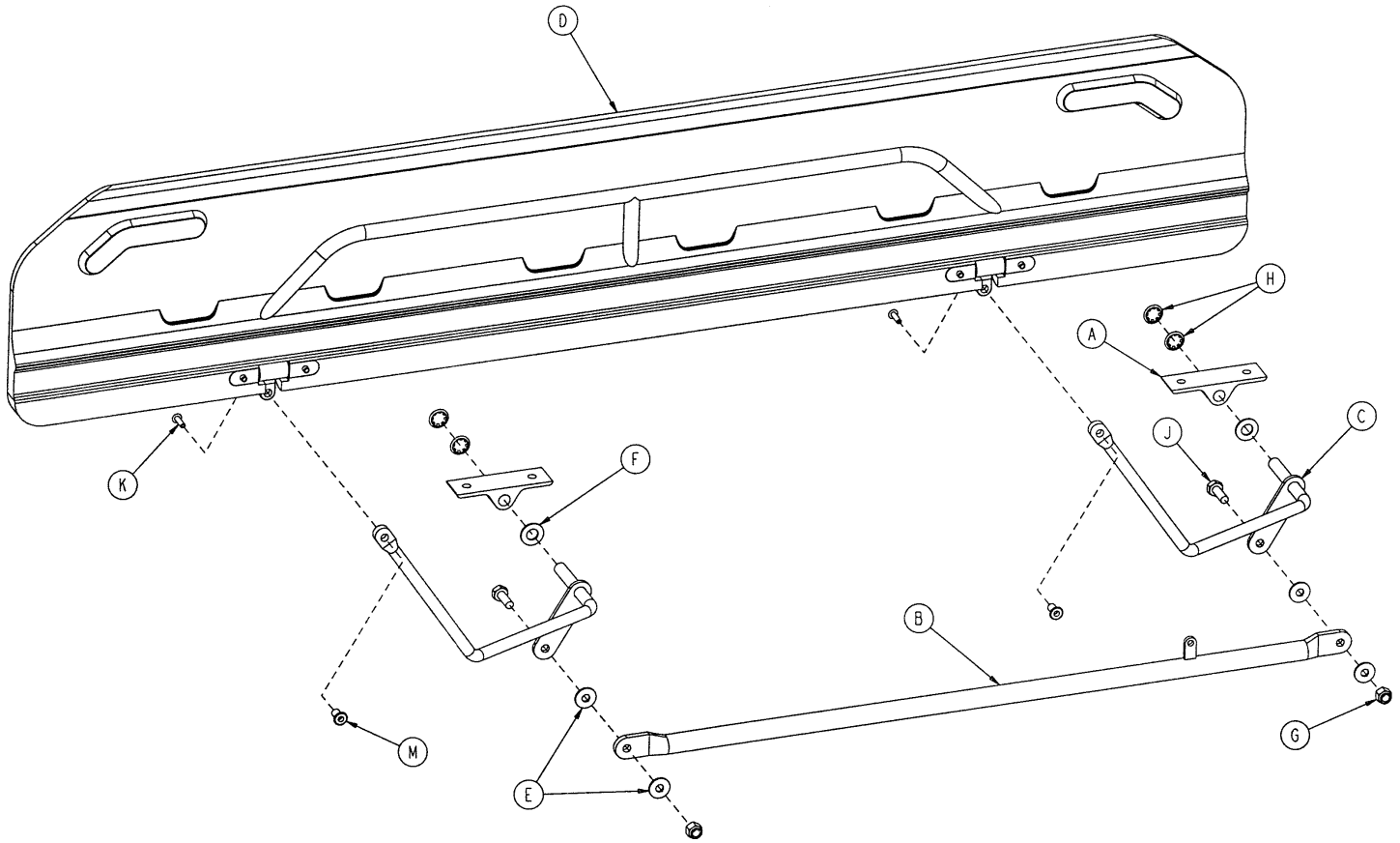
| Item | Part No. | Part Name | Qty. |
|------|--------------|--------------------|------|
| A | 1010-026-015 | Top Rail | 1 |
| B | 1010-026-083 | Upright | 4 |
| C | 1010-026-084 | Upright, Bent | 1 |
| D | 1010-026-082 | Spacer | 6 |
| E | 0025-106-000 | Semi-Tubular Rivet | 6 |
| F | 1010-026-010 | Round Hole Plug | 4 |
| H | 1010-026-085 | Upright, Latch | 1 |
| J | 1010-026-012 | Bent Spindle Stop | 1 |

0721-239-010 Optional Short Transfer System Assembly



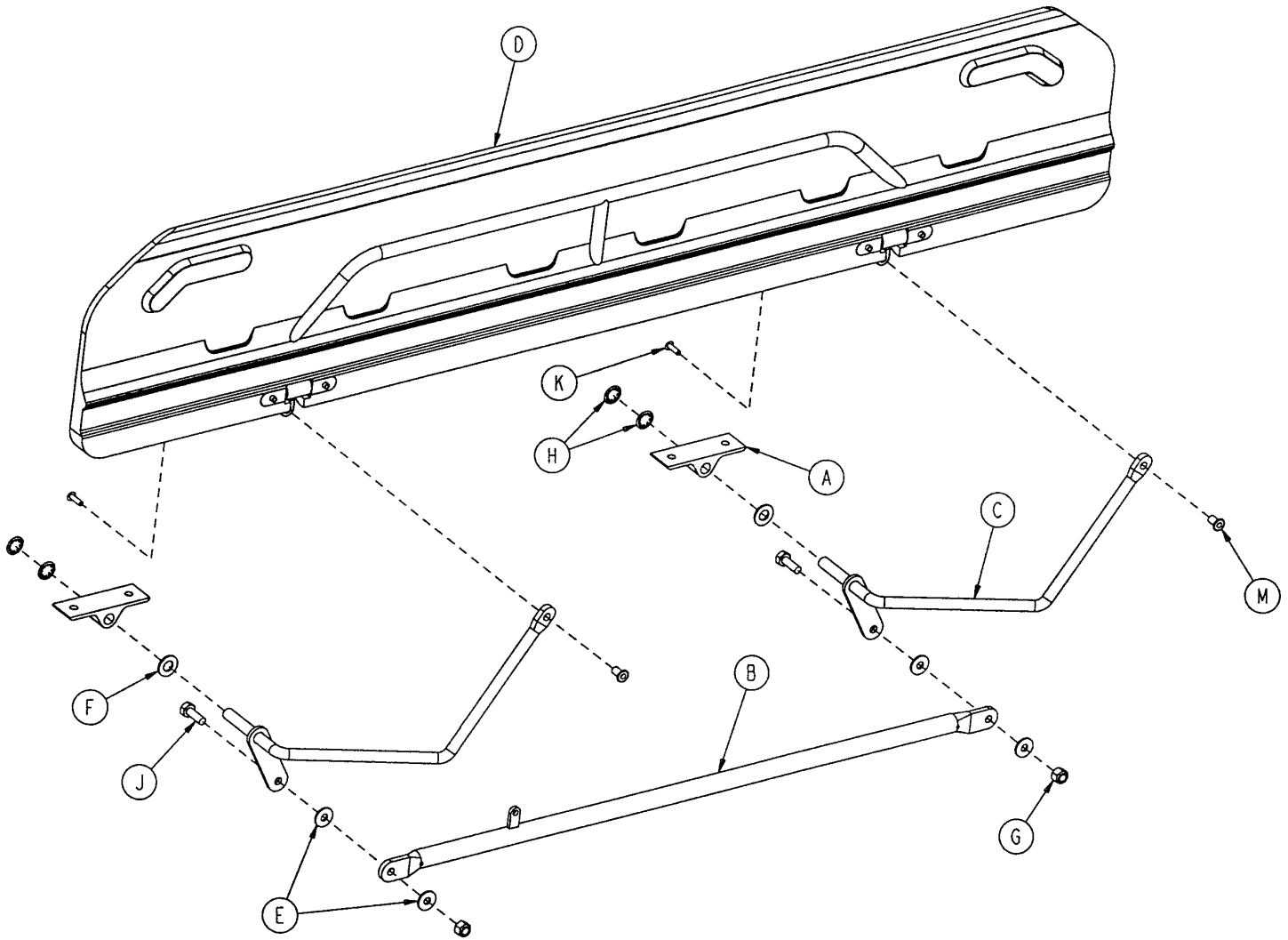
| Item | Part No. | Part Name | Qty. |
|------|--------------|----------------------------|------|
| A | (page 38) | Transfer System Ass'y, Rt. | 1 |
| B | (page 39) | Transfer System Ass'y, Lt. | 1 |
| C | 0010-011-000 | Eye Bolt | 2 |
| D | 0038-218-000 | Tension Spring | 2 |
| E | 1010-224-025 | Spring Retainer | 2 |
| F | 0003-359-000 | Hex Hd. Cap Screw | 8 |
| G | 0011-180-000 | Flat Washer | 8 |
| H | 0016-118-000 | Nylock Hex Nut | 12 |
| J | 0015-021-000 | Jam Nut | 4 |
| K | 0003-356-000 | Hex Hd. Cap Screw | 4 |

1010-232-010 Short Transfer Board Assembly, Right



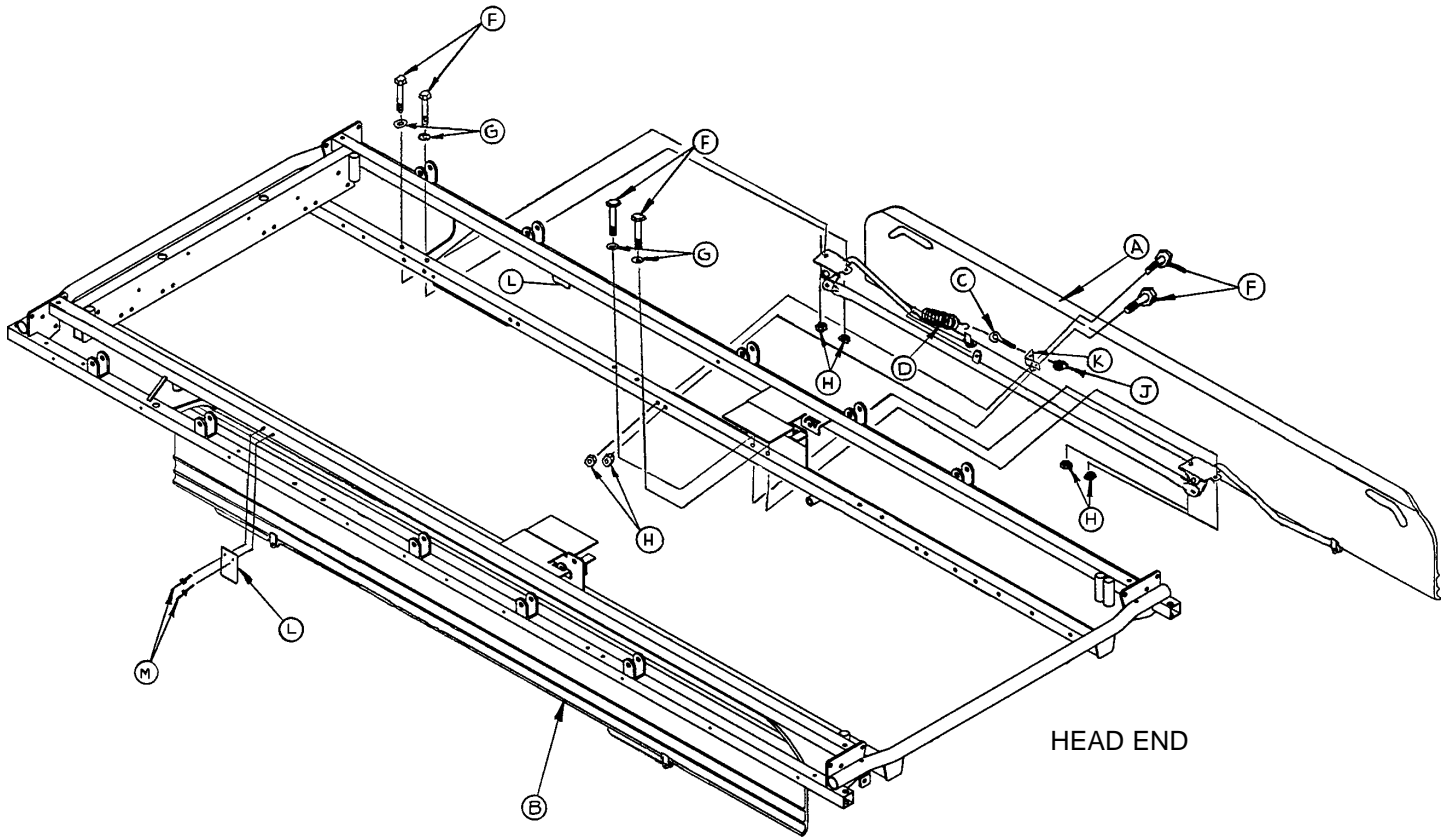
| Item | Part No. | Part Name | Qty. |
|------|--------------|----------------------------|------|
| A | 1010-032-098 | Pivot | 2 |
| B | 1010-224-033 | Connecting Link Ass'y, Rt. | 1 |
| C | 1010-232-016 | Pivot Arm Ass'y, Right | 2 |
| D | 1020-032-100 | Transfer Board Ass'y | 1 |
| E | 0011-224-000 | Nylon Flat Washer | 4 |
| F | 0014-021-000 | Nylon Flat Washer | 2 |
| G | 0016-118-000 | Nylock Hex Nut | 2 |
| H | 0028-093-000 | Retaining Ring | 4 |
| J | 0003-356-000 | Hex Hd. Cap Screw | 2 |
| K | 0025-157-000 | Blind Rivet | 2 |
| L | 0721-024-046 | Label | 1 |
| M | 1211-132-025 | Pivot Sleeve | 2 |

1010-232-011 Short Transfer Board Assembly, Left



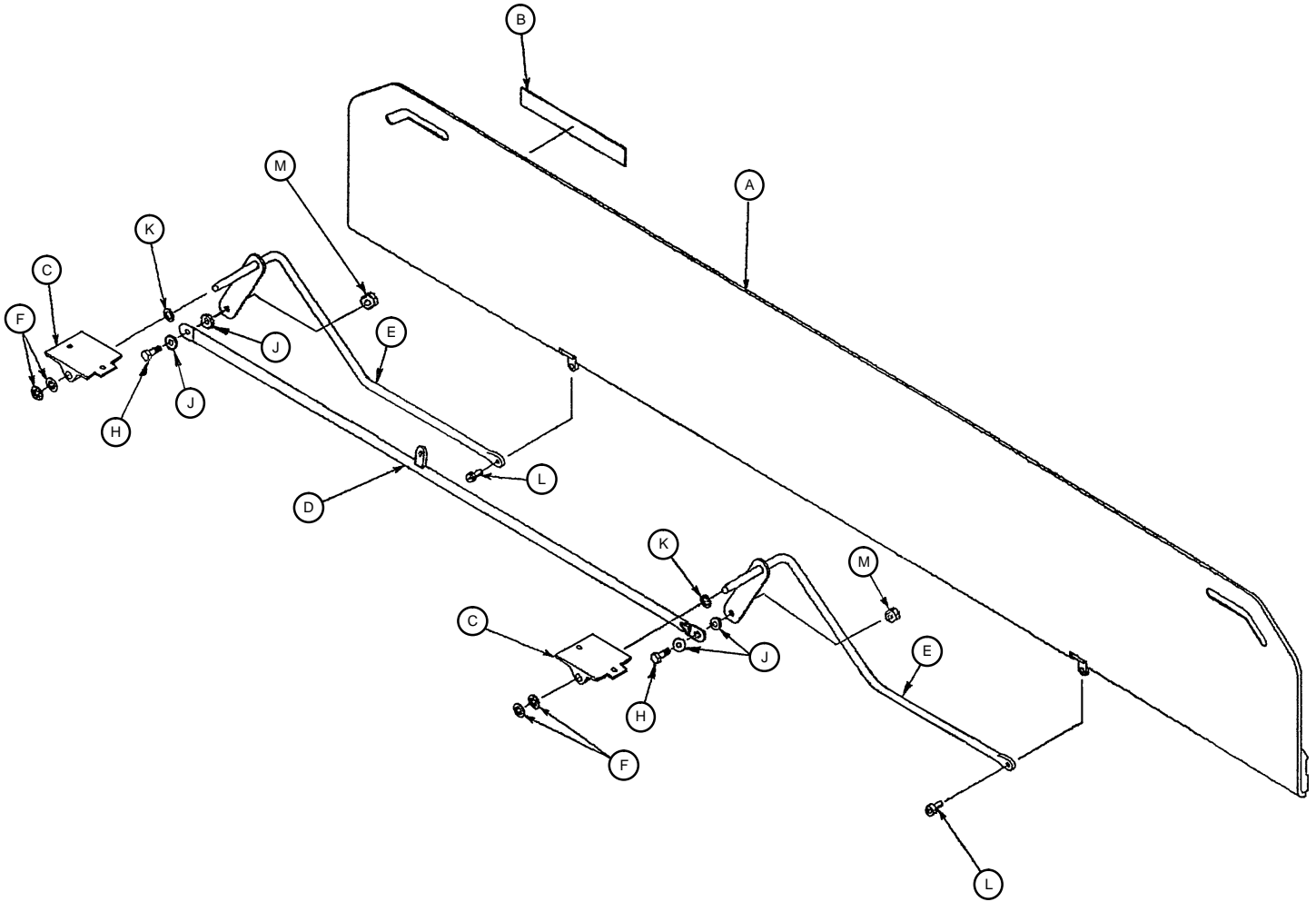
| Item | Part No. | Part Name | Qty. |
|------|--------------|-----------------------|------|
| A | 1010-032-098 | Pivot | 2 |
| B | 1010-224-033 | Connecting Link Ass'y | 1 |
| C | 1010-232-017 | Pivot Arm Ass'y, Lt. | 2 |
| D | 1020-032-100 | Transfer Board Ass'y | 1 |
| E | 0011-224-000 | Nylon Flat Washer | 4 |
| F | 0014-021-000 | Nylon Flat Washer | 2 |
| G | 0016-118-000 | Nylock Hex Nut | 2 |
| H | 0028-093-000 | Retaining Ring | 4 |
| J | 0003-356-000 | Hex Hd. Cap Screw | 2 |
| K | 0025-157-000 | Blind Rivet | 2 |
| L | 0721-024-046 | Label | 1 |
| M | 1211-132-025 | Pivot Sleeve | 2 |

0721-234-010 Optional Long Transfer System Assembly



| Item | Part No. | Part Name | Qty. |
|------|--------------|----------------------------|------|
| A | (page 42) | Transfer System Ass'y, Rt. | 1 |
| B | (page 41) | Transfer System Ass'y, Lt. | 1 |
| C | 0010-011-000 | Eye Bolt | 2 |
| D | 0038-218-000 | Tension Spring | 2 |
| E | 0721-224-025 | Spring Retainer, Rt. | 1 |
| F | 0003-359-000 | Hex Hd. Cap Screw | 12 |
| G | 0011-180-000 | Flat Washer | 8 |
| H | 0016-118-000 | Nylock Hex Nut | 12 |
| J | 0015-021-000 | Jam Nut | 2 |
| K | 0721-224-024 | Spring Retainer, Lt. | 1 |
| L | 0721-024-061 | Pivot Arm Rest | 2 |
| M | 0025-179-000 | Pop Rivet | 4 |
| N | 0721-201-017 | Riser Tube (not shown) | 2 |

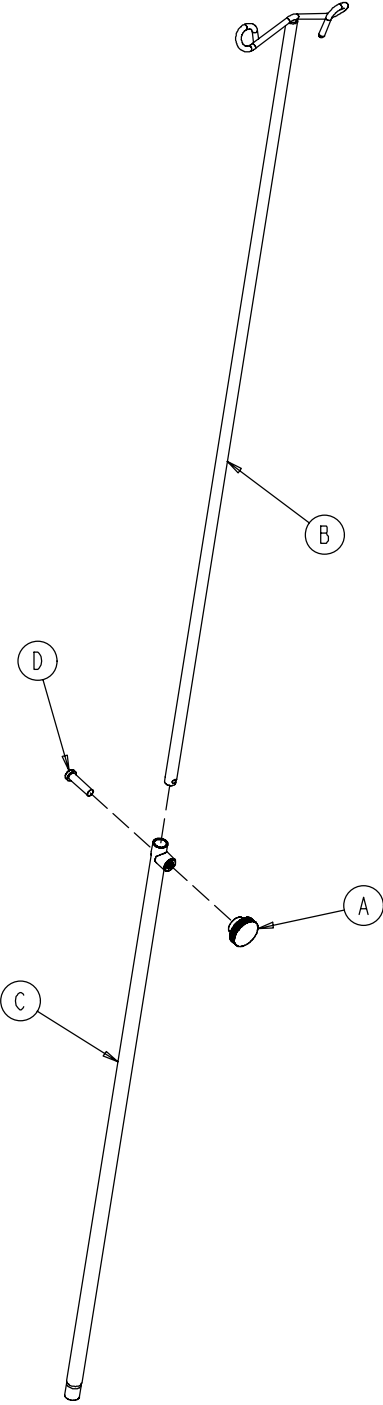
0721-234-013 Long Transfer Board Assembly, Right



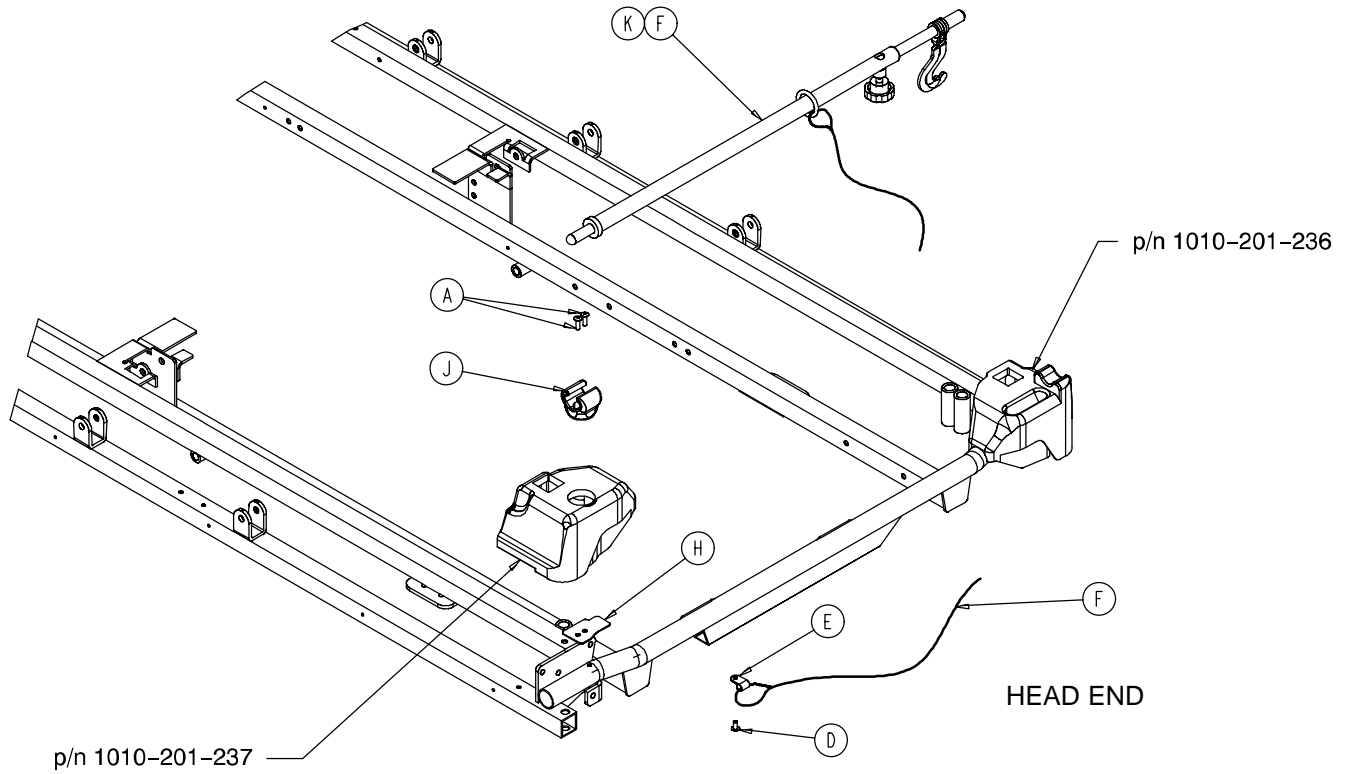
| Item | Part No. | Part Name | Qty. |
|------|--------------|----------------------------|------|
| A | 0721-024-055 | Transfer Board Ass'y | 1 |
| B | 0721-024-046 | Label | 1 |
| C | 0721-224-016 | Long Pivot, Machined | 2 |
| D | 0721-224-033 | Connecting Link Ass'y, Rt. | 1 |
| E | 0721-232-016 | Pivot Arm Ass'y, Right | 2 |
| F | 0028-093-000 | Retaining Ring | 4 |
| H | 0003-050-000 | Hex Hd. Cap Screw | 2 |
| J | 0011-224-000 | Nylon Flat Washer | 4 |
| K | 0014-021-000 | Nylon Flat Washer | 2 |
| L | 0004-156-000 | Soc. Hd. Cap Screw | 2 |
| M | 0016-028-000 | Nylock Hex Nut | 2 |

0390-025-000 Standard, Removable I.V. Pole Assembly

| Item | Part No. | Part Name | Qty. |
|------|--------------|--------------------|------|
| A | 0024-023-000 | Plastic Knob | 1 |
| B | 0390-003-053 | Double I.V. Ass'y | 1 |
| C | 0393-003-043 | Tube Assembly | 1 |
| D | 0004-496-000 | Soc. Hd. Cap Screw | 1 |

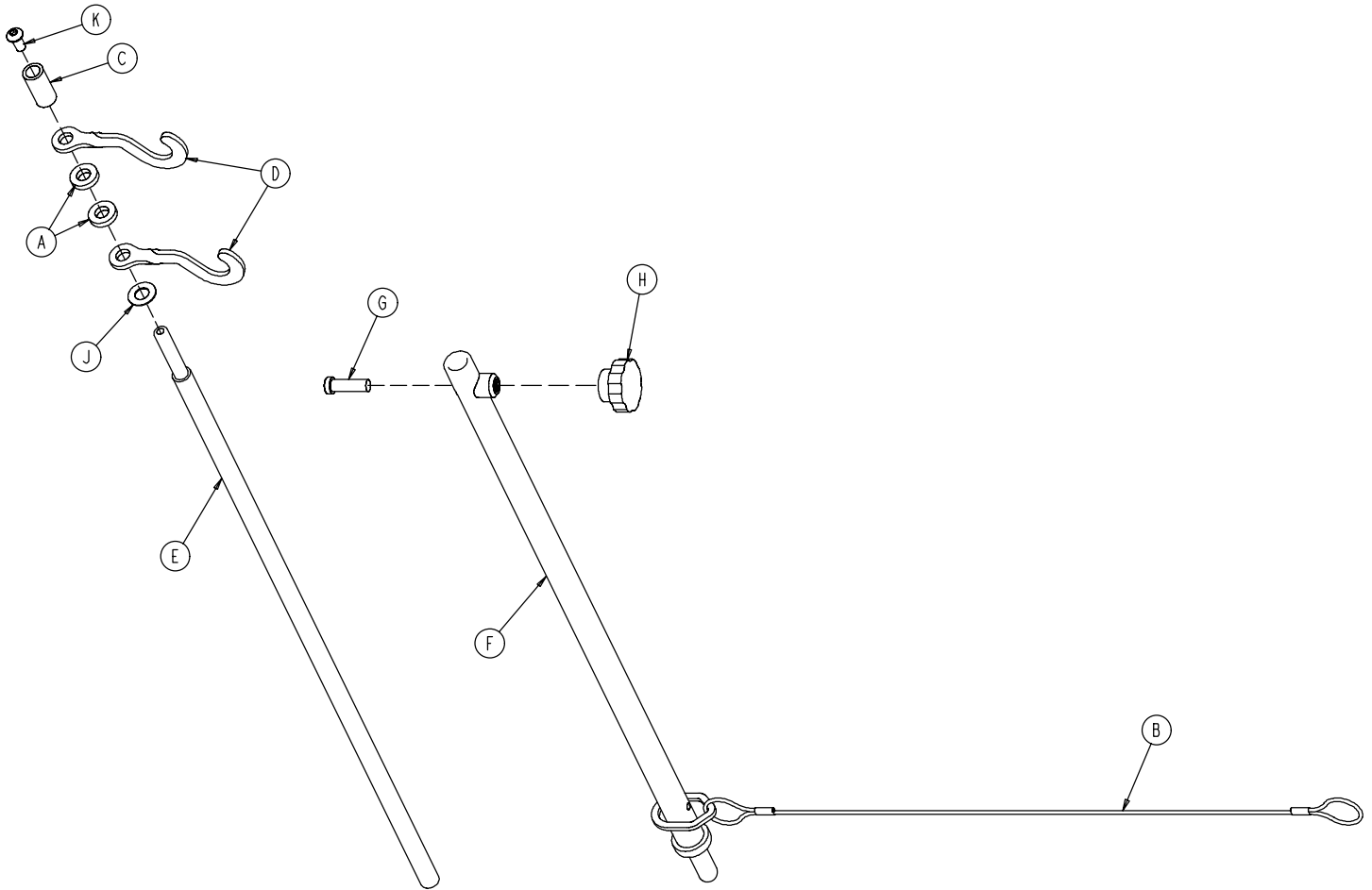


0721-117-000 Optional Tethered I.V. Assembly



| Item | Part No. | Part Name | Qty. |
|------|--------------|-----------------------------|------|
| A | 0025-133-000 | Pop Rivet | 2 |
| D | 0025-179-000 | Rivet | 1 |
| E | 0034-022-000 | Cable Clamp | 1 |
| F | 1001-159-042 | I.V. Plug | 1 |
| H | (page 45) | Tethered I.V. Pole Assembly | 1 |
| J | 1211-117-021 | Backing Plate | 1 |
| K | 1211-117-022 | I.V. Clip | 1 |

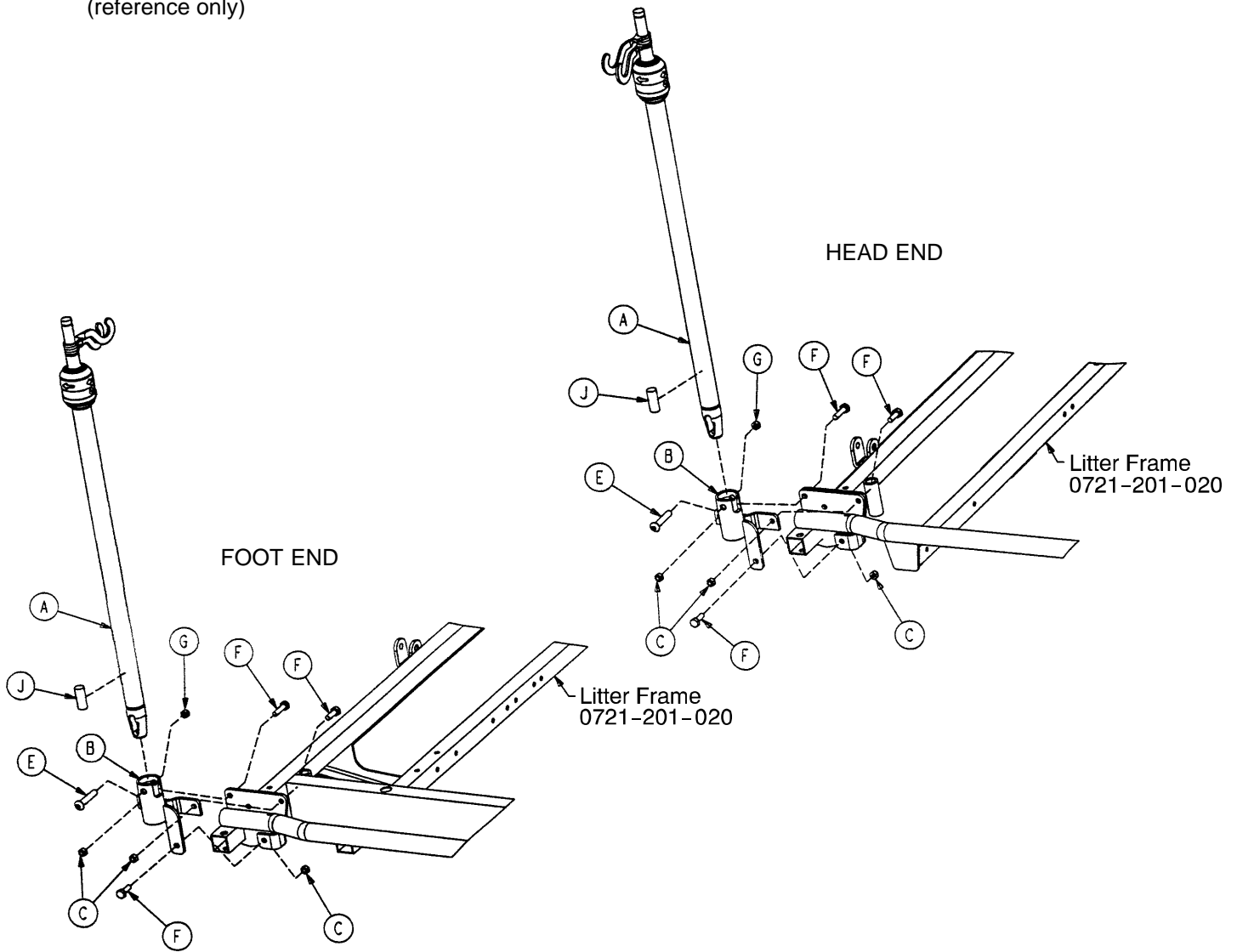
1211-117-010 Tethered I.V. Pole Assembly



| Item | Part No. | Part Name | Qty. |
|------|--------------|----------------------------|------|
| A | 0052-017-000 | Spacer | 2 |
| B | 1211-117-020 | Cable Assembly | 1 |
| C | 0926-400-062 | Stop Sleeve | 1 |
| D | 1010-059-016 | I.V. Hook | 2 |
| E | 1211-117-011 | Extension Rod | 1 |
| F | 1211-117-012 | Base Tube Weldment | 1 |
| G | 0004-495-000 | Low Hd. Soc. Hd. Cap Screw | 1 |
| H | 1211-117-016 | Knob | 1 |
| J | 0014-020-000 | Nylon Washer | 1 |
| K | 0004-232-000 | Button Hd. Cap Screw | 1 |

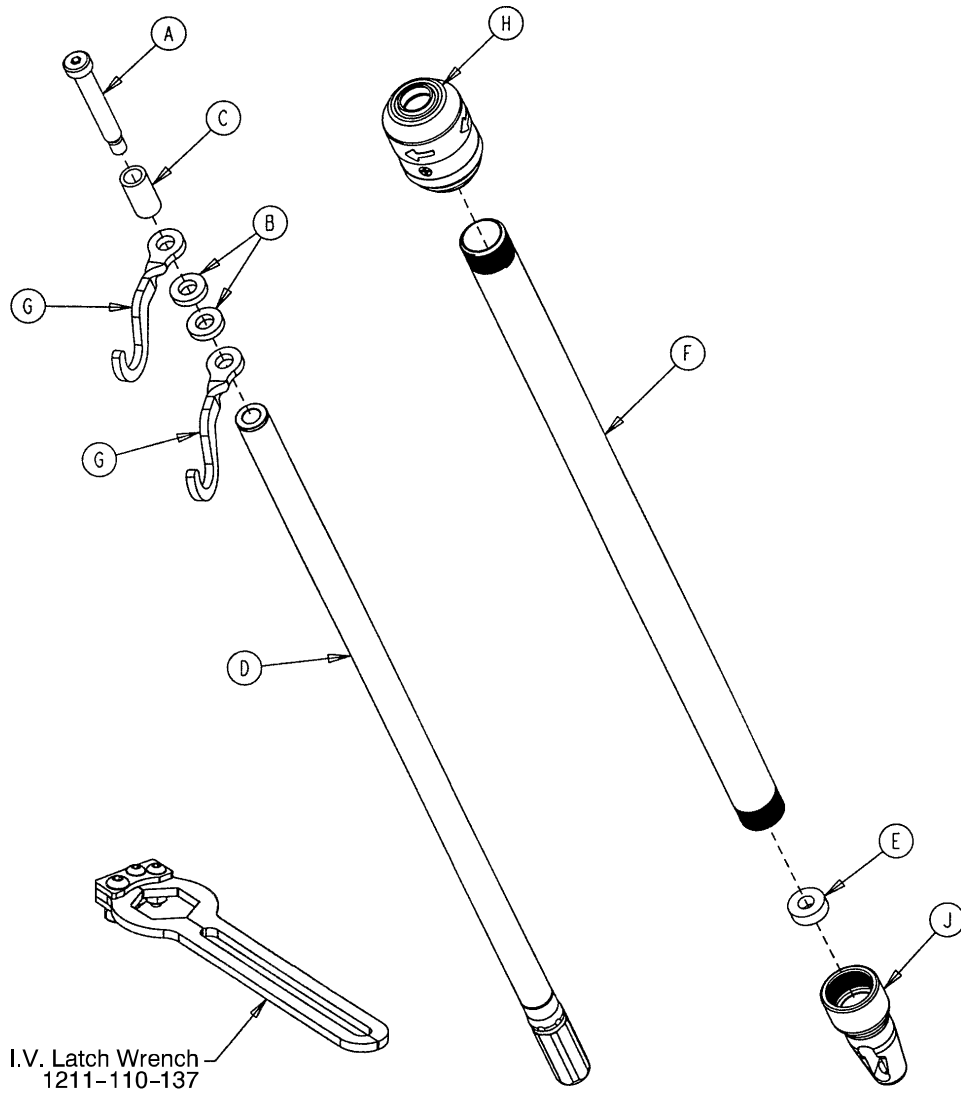
721-400-001 Optional 2-Stage I.V. Assembly

Assembly part number 0721-280-000 & 0721-281-000
(reference only)



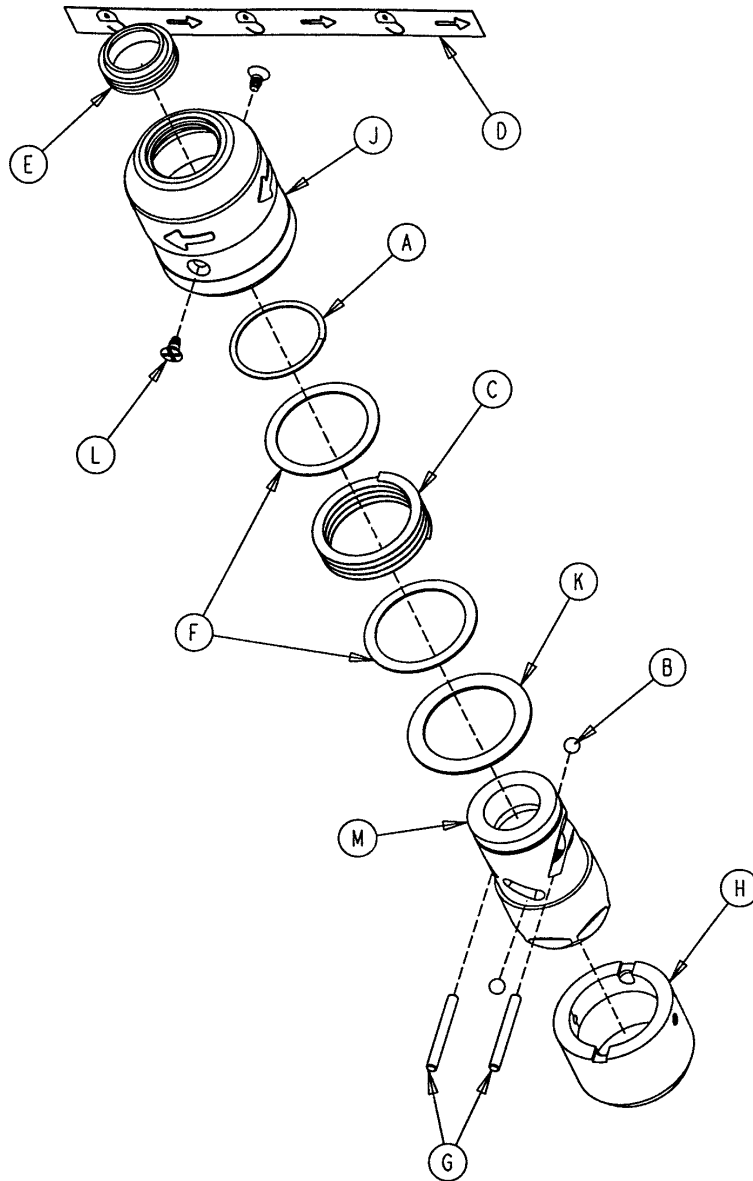
| Item | Part No. | Part Name | Qty |
|------|--------------|--------------------|-----|
| A | (page 47) | I.V. Pole Assembly | 1 |
| B | 1001-259-103 | I.V. Pivot | 1 |
| C | 0016-118-000 | Fiberlock Nut | 3 |
| E | 0004-452-000 | But. Hd. Cap Screw | 1 |
| F | 0003-356-000 | Hex Hd. Cap Screw | 3 |
| G | 0016-116-000 | Flexlock Nut | 1 |
| J | 1001-059-040 | I.V. Plug | 1 |

1211-210-010 Optional 2-Stage I.V. Pole Assembly



| Item | Part No. | Part Name | Qty. |
|------|--------------|--------------------|------|
| A | 0008-031-000 | Soc. Hd. Cap Screw | 1 |
| B | 0052-017-000 | Washer | 2 |
| C | 0926-400-162 | Spacer | 1 |
| D | 1211-210-029 | 2nd Stage Assembly | 1 |
| E | 1001-359-013 | Dampener | 1 |
| F | 1001-159-028 | Base Tube | 1 |
| G | 1010-259-016 | I.V. Hook | 2 |
| H | (page 48) | I.V. Pole Latch | 1 |
| J | 1001-359-112 | Pivot | 1 |

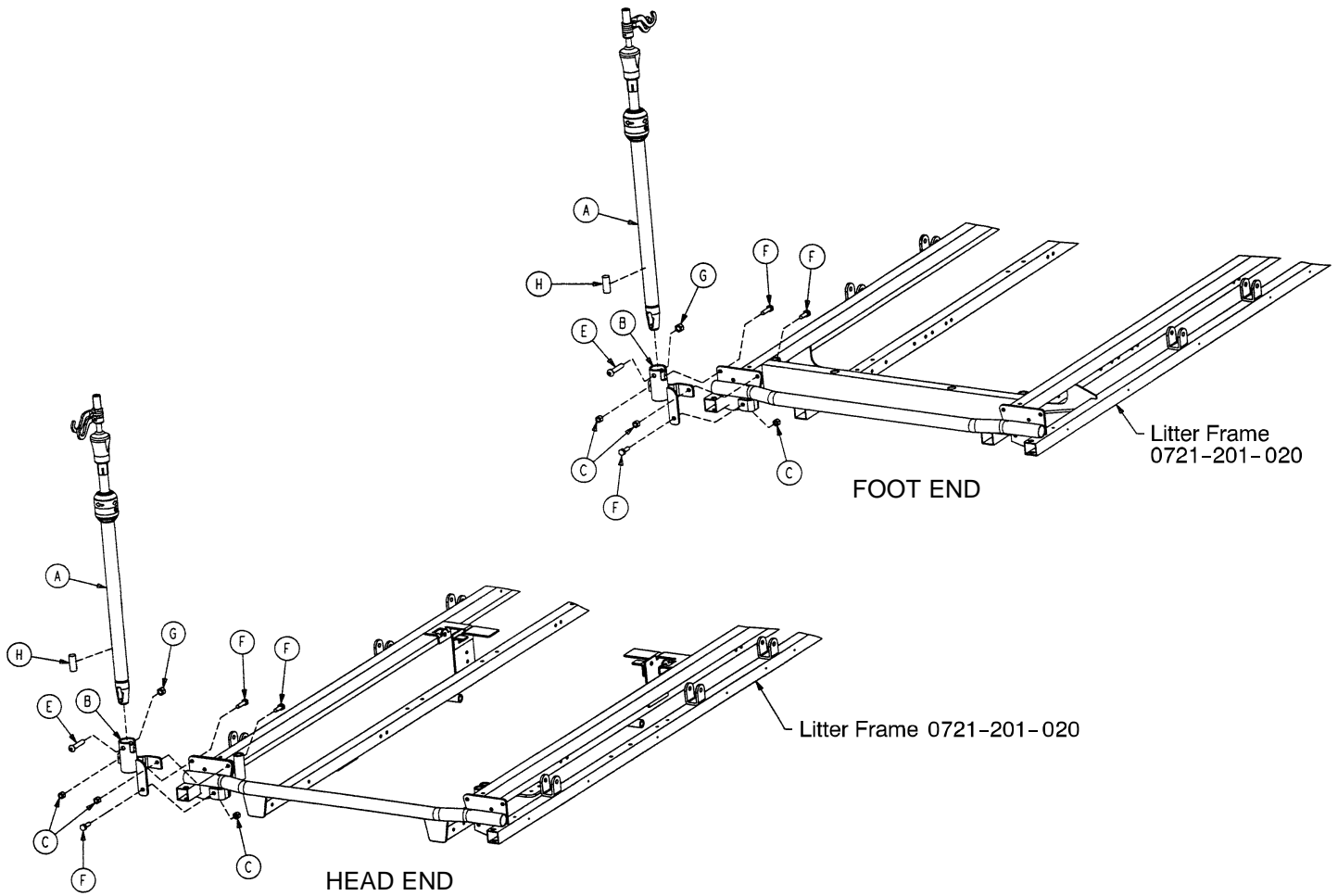
1211-210-026 I.V. Pole Latch Assembly



| Item | Part No. | Part Name | Qty. |
|------|--------------|-------------------------|------|
| A | 0028-167-000 | Retaining Ring | 1 |
| B | 0031-004-000 | Steel Ball | 2 |
| C | 0038-392-000 | Crest-to-Crest Spring | 1 |
| D | 1211-091-034 | Release Label | 1 |
| E | 1211-110-018 | I.V. Latch Seal | 1 |
| F | 1211-110-020 | Washer | 2 |
| G | 1211-110-021 | I.V. Latch Locking Pin | 2 |
| H | 1211-110-022 | I.V. Latch Guide | 1 |
| J | 1211-110-024 | I.V. Latch O.D. Housing | 1 |
| K | 1211-110-035 | Washer | 1 |
| L | 1211-110-036 | Self-Tapping Screw | 2 |
| M | 1211-210-023 | I.V. Latch I.D. Housing | 1 |

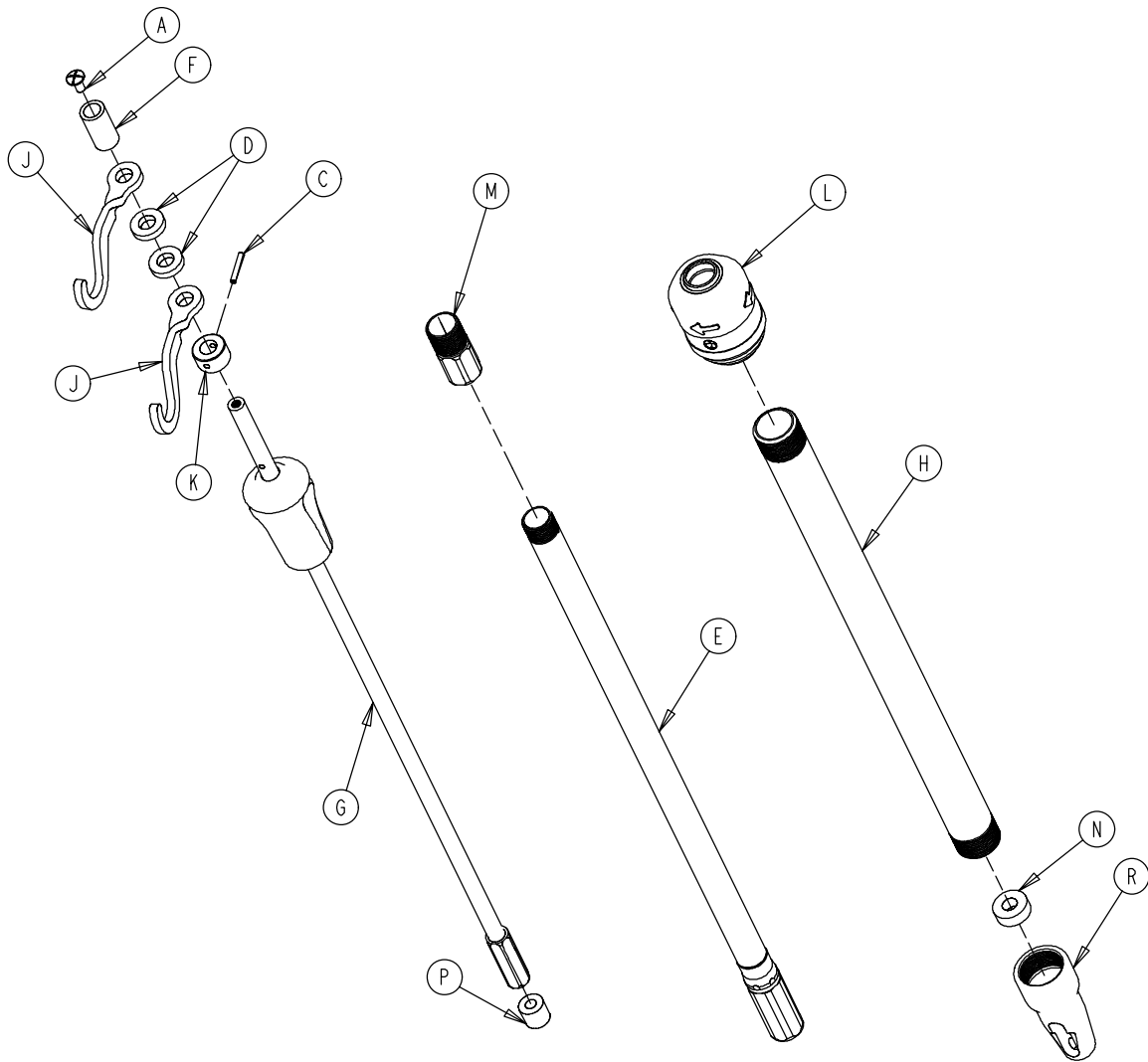
0721-061-000 Optional 3-Stage I.V. Assembly, Head

0721-062-000 Optional 3-Stage I.V. Assembly, Foot



| Item | Part No. | Part Name | Qty. |
|------|--------------|--------------------|------|
| A | (page 50) | I.V. Pole Assembly | 1 |
| B | 1001-259-013 | I.V. Pivot | 1 |
| C | 0016-118-000 | Fiberlock Nut | 3 |
| E | 0004-452-000 | But. Hd. Cap Screw | 1 |
| F | 0003-356-000 | Hex Hd. Cap Screw | 3 |
| G | 0016-116-000 | Flexlock Nut | 1 |
| H | 1001-059-040 | Plug | 1 |

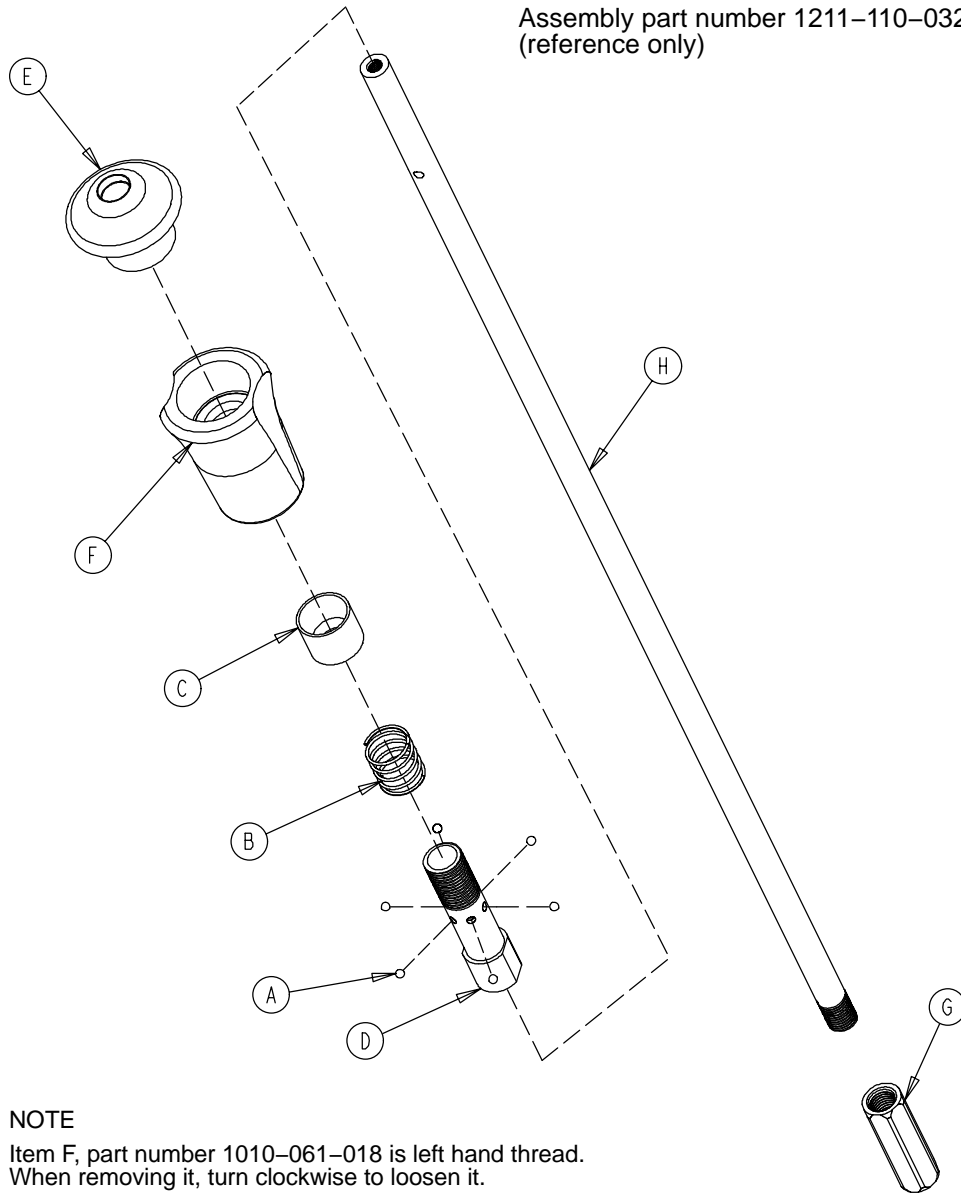
1211-211-010 Optional 3-Stage I.V. Pole Assembly



| Item | Part No. | Part Name | Qty. |
|------|--------------|-------------------------|------|
| A | 0007-004-000 | Truss Hd. Machine Screw | 1 |
| C | 0026-076-000 | Roll Pin | 1 |
| D | 0052-017-000 | Spacer | 2 |
| E | 1211-210-031 | 2nd Stage Assembly | 1 |
| F | 0926-400-162 | Spacer | 1 |
| G | (page 51) | 3rd Stage Assembly | 1 |
| H | 1001-161-023 | Base Tube | 1 |
| J | 1010-259-016 | I.V. Hook | 2 |
| K | 1010-061-014 | Collar | 1 |
| L | (page 48) | I.V. Pole Latch | 1 |
| M | 1211-110-016 | Threaded Adaptor | 1 |
| N | 1001-359-013 | Dampener | 1 |
| P | 1001-359-014 | Dampener | 1 |
| R | 1001-359-112 | Pivot | 1 |

3-Stage I.V. Pole 3rd Stage Assembly

Assembly part number 1211-110-032
(reference only)

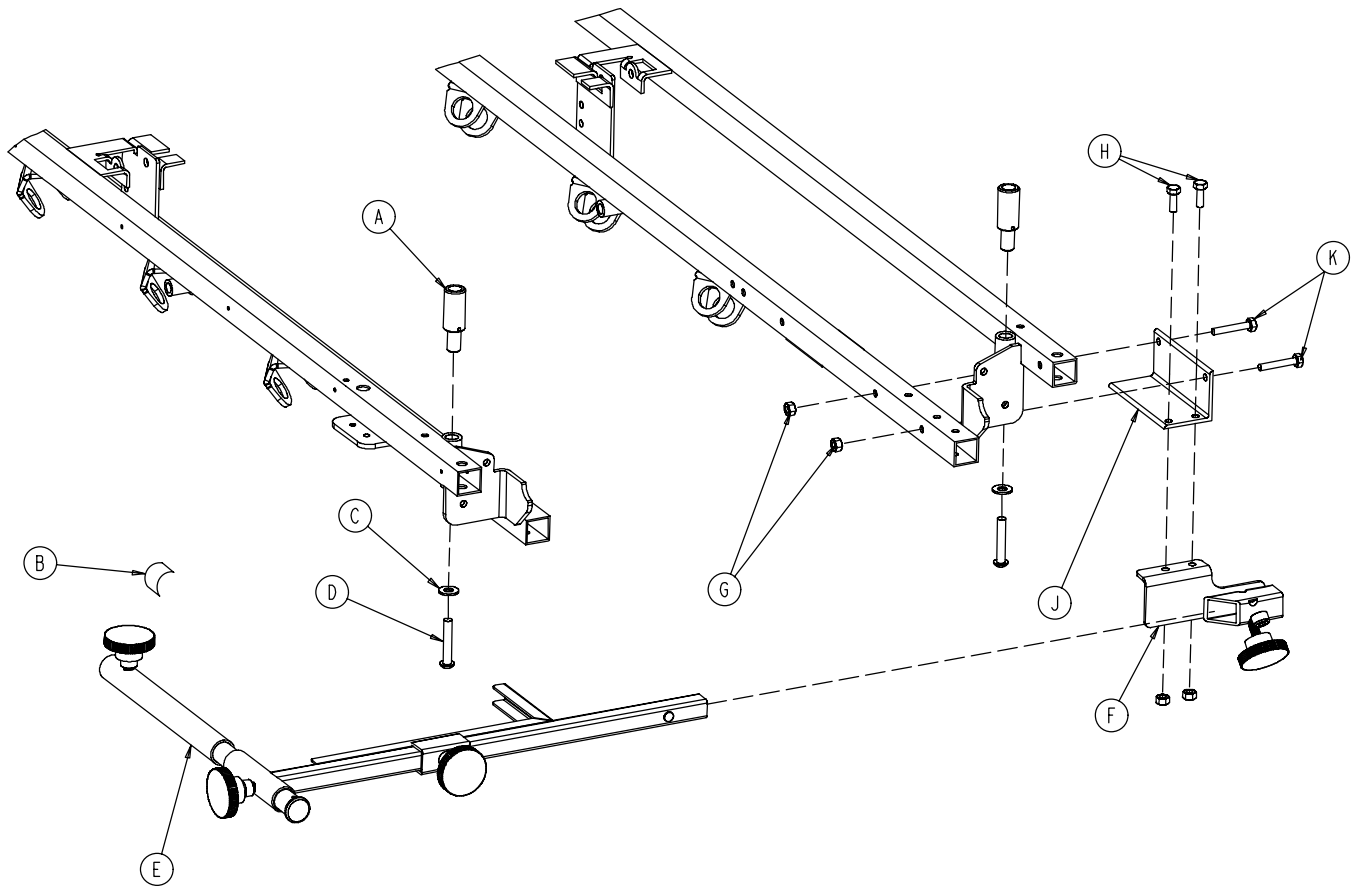


NOTE

Item F, part number 1010-061-018 is left hand thread.
When removing it, turn clockwise to loosen it.

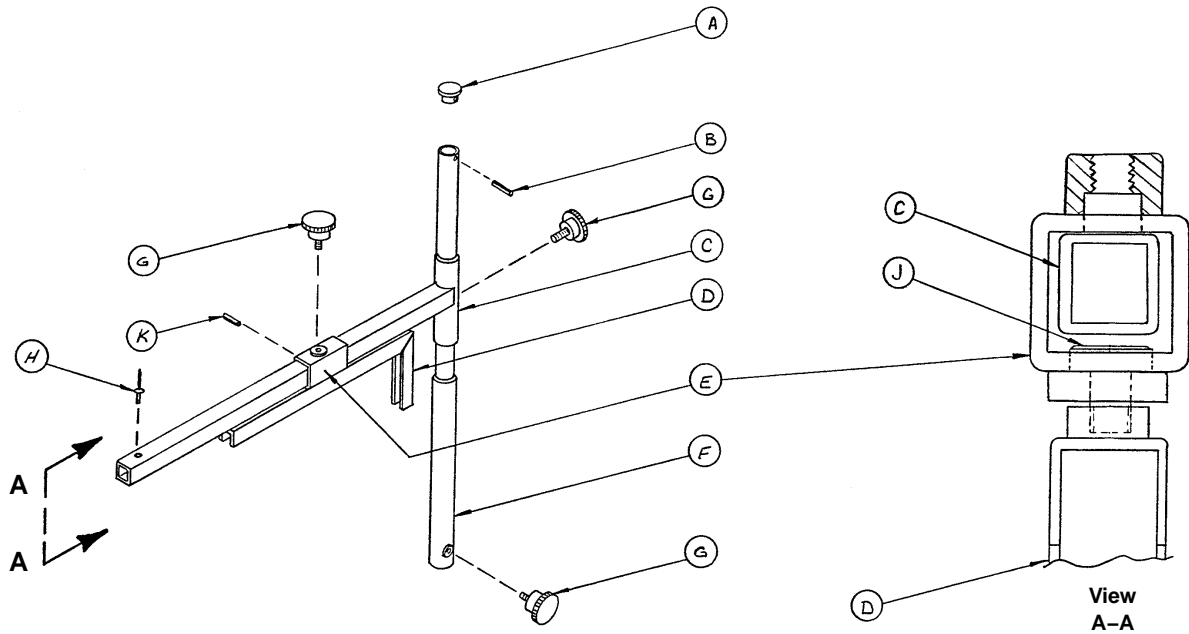
| Item | Part No. | Part Name | Qty. |
|------|--------------|--------------------|------|
| A | 0031-021-000 | Ball | 6 |
| B | 0038-303-000 | Compression Spring | 1 |
| C | 1010-061-013 | Ball Retainer | 1 |
| D | 1010-061-016 | Retaining Shaft | 1 |
| E | 1010-061-017 | Thumb Knob | 1 |
| F | 1010-061-018 | Hand Guard | 1 |
| G | 1211-110-117 | Nut | 1 |
| H | 1211-110-033 | 3rd Extension Rod | 1 |

1001-070-000 C-Spine Cassette Holder Assembly



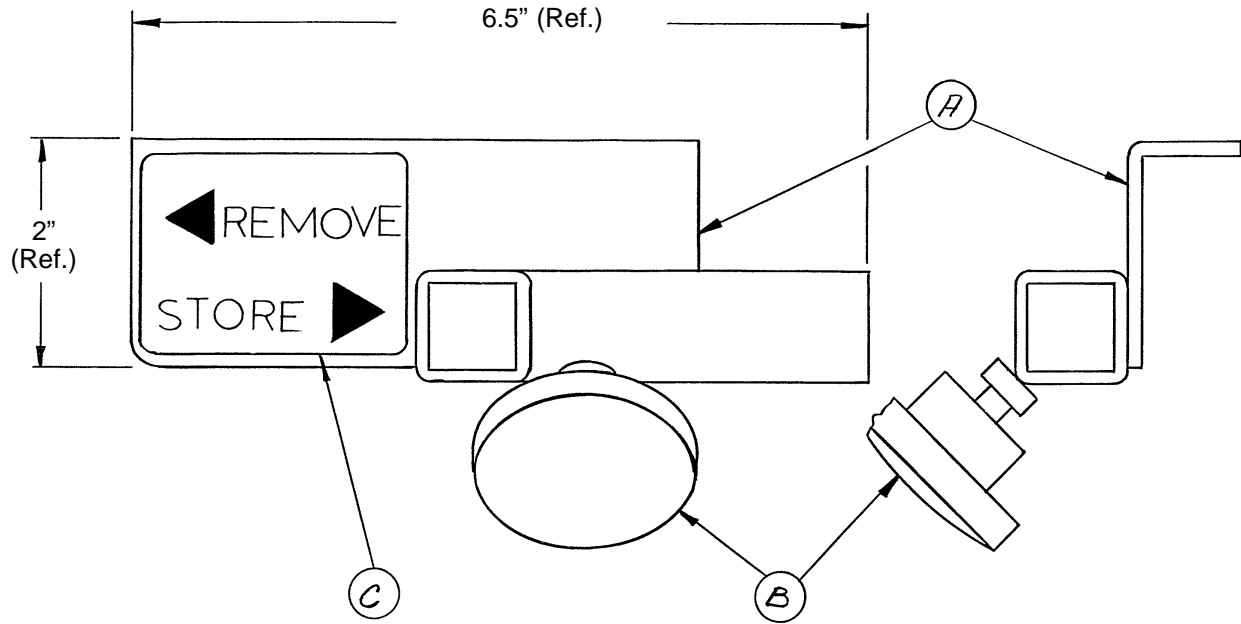
| Item | Part No. | Part Name | Qty. |
|------|--------------|-----------------------|------|
| A | 1010-070-025 | I.V. Adaptor | 2 |
| B | 1010-070-018 | Specification Label | 1 |
| C | 0011-447-000 | Flat Washer | 2 |
| D | 0004-054-000 | But. Hd. Cap Screw | 2 |
| E | (page 53) | Support Pole Assembly | 1 |
| F | (page 54) | Storage Bracket Ass'y | 1 |
| G | 0016-118-000 | Nylock Nut | 4 |
| H | 0003-356-000 | Hex Hd. Cap Screw | 2 |
| J | 1001-070-011 | Attachment Bracket | 1 |
| K | 0003-355-000 | Hex Hd. Cap Screw | 2 |

1010-070-010 C-Spine Support Pole Assembly



| Item | Part No. | Part Name | Qty. |
|------|--------------|--------------------------|------|
| A | 1010-070-033 | Support Tube Cap | 1 |
| B | 0026-006-000 | Roll Pin | 1 |
| C | 1010-070-034 | Support Arm Weldment | 1 |
| D | 1010-070-042 | Cassette Holder Weldment | 1 |
| E | 1010-070-050 | Adjustment Tube Weldment | 1 |
| F | 1010-070-030 | Base Tube Weldment | 1 |
| G | 1010-070-045 | Knob | 3 |
| H | 0025-055-000 | Pop Rivet | 1 |
| J | 1010-070-044 | Pivot Pin | 1 |
| K | 0026-005-000 | Roll Pin | 1 |

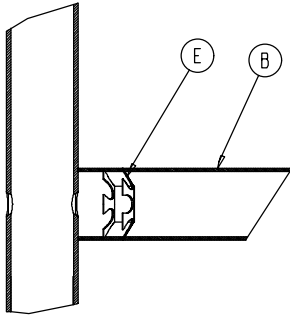
1010-070-019 C-Spine Storage Bracket Assembly



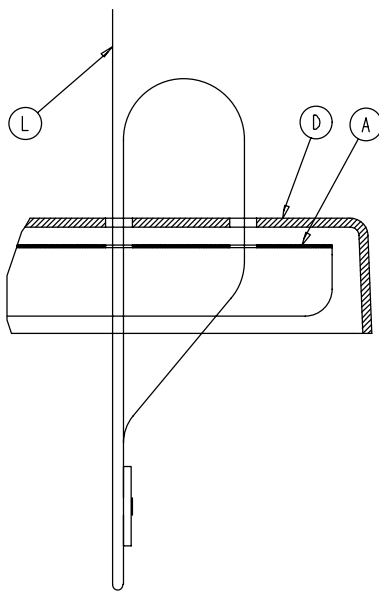
| Item | Part No. | Part Name | Qty. |
|------|--------------|--------------------------|------|
| A | 1010-070-020 | Storage Bracket Weldment | 1 |
| B | 1010-070-045 | Knob | 1 |
| C | 1010-070-023 | Storage Label | 1 |

0926-039-000 Optional Defibrillator Tray Assembly

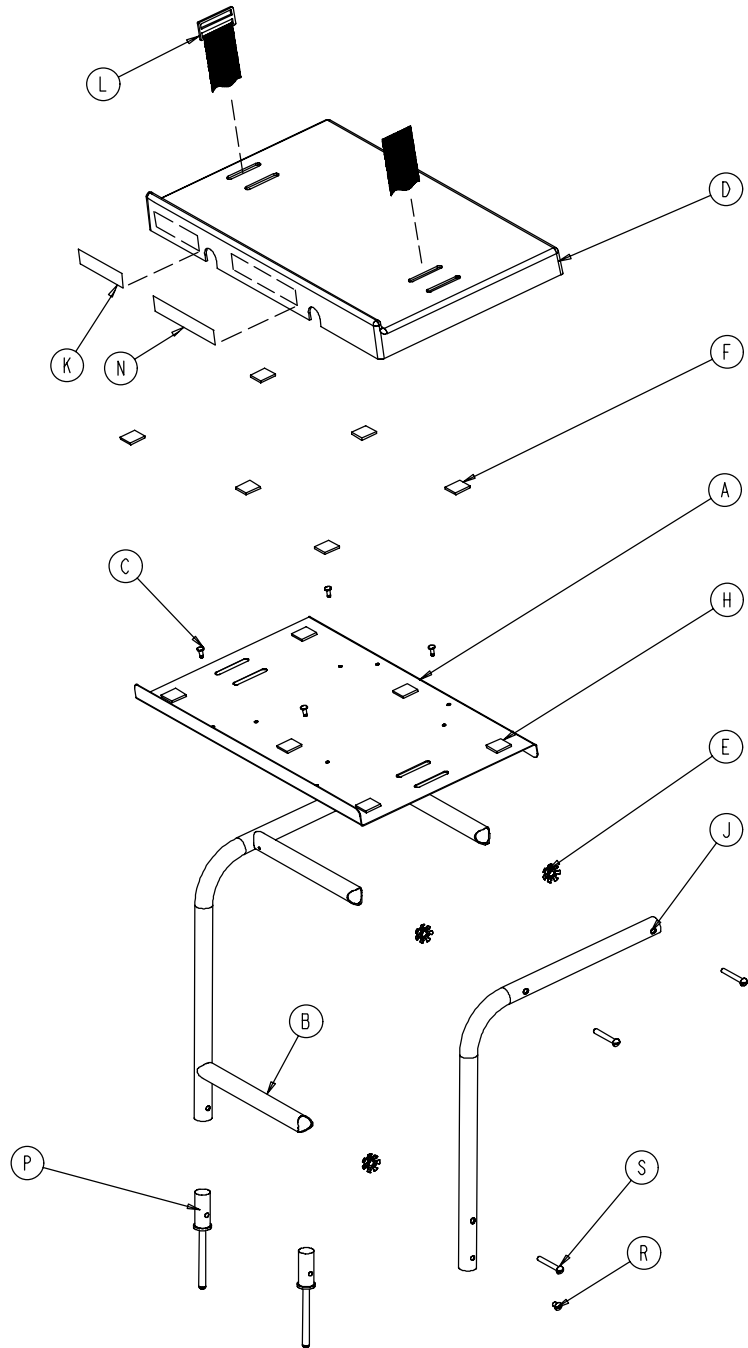
Assembly part number 0926-039-010
(reference only)



Umbrella Nut/Crosstube Detail



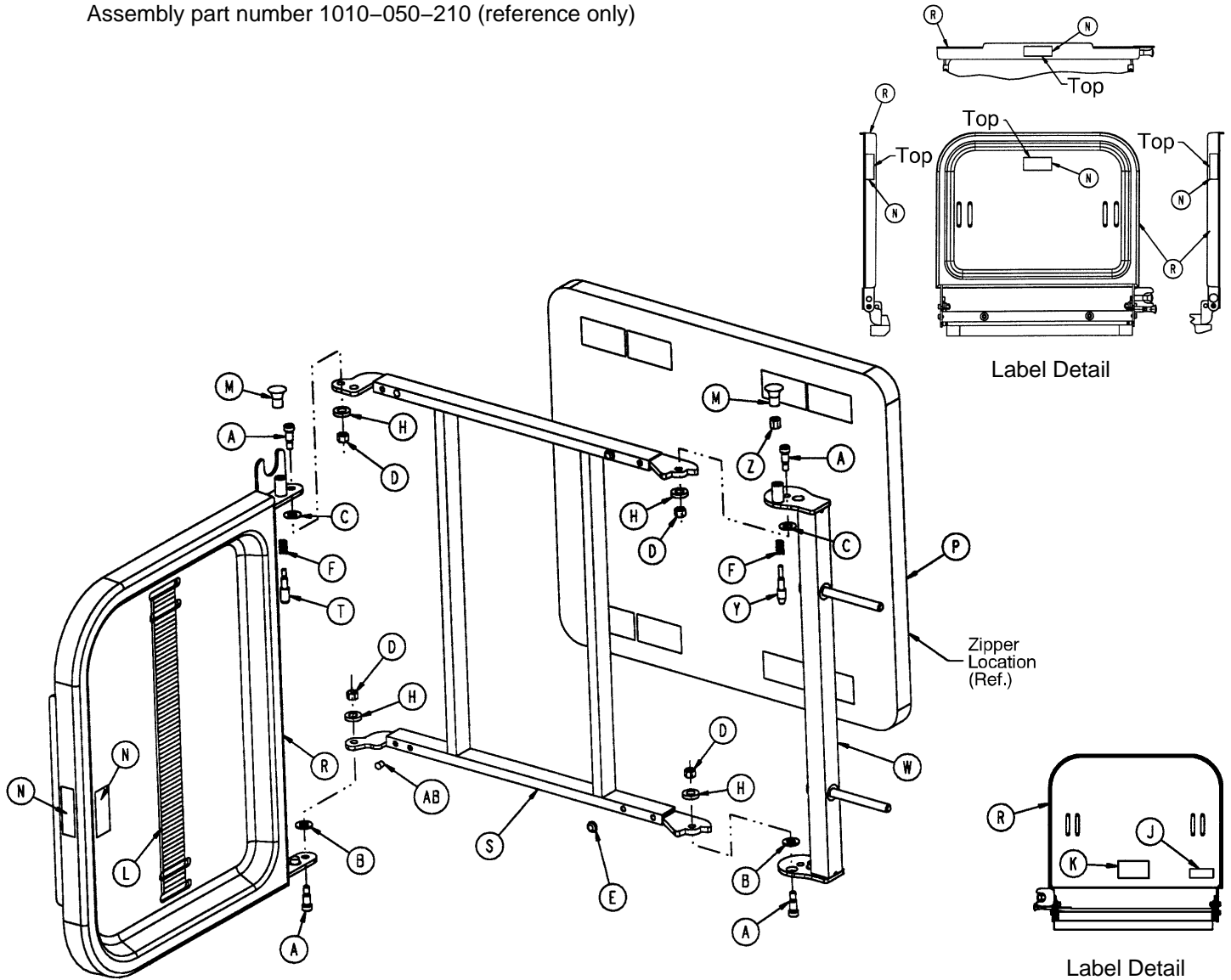
Strap Securing Detail



| Item | Part No. | Part Name | Qty. | Item | Part No. | Part Name | Qty. |
|------|--------------|--------------|------|------|--------------|---------------------|------|
| A | 0946-039-004 | Tray | 1 | J | 0946-039-003 | Support Tube | 2 |
| B | 0926-039-016 | Crosstube | 3 | K | 0926-001-082 | Label | 1 |
| C | 0025-055-000 | Rivet | 4 | L | 1010-050-021 | Long Strap | 1 |
| D | 0926-039-009 | Cover | 1 | N | 0946-001-283 | Label | 1 |
| E | 0018-006-000 | Umbrella Nut | 6 | P | 0926-039-015 | Holder | 2 |
| F | 0029-008-000 | Dual Lock | 6 | R | 0002-044-000 | Screw | 2 |
| H | 0029-010-000 | Dual Lock | 6 | S | 0002-105-000 | Rd. Hd. Mach. Screw | 6 |

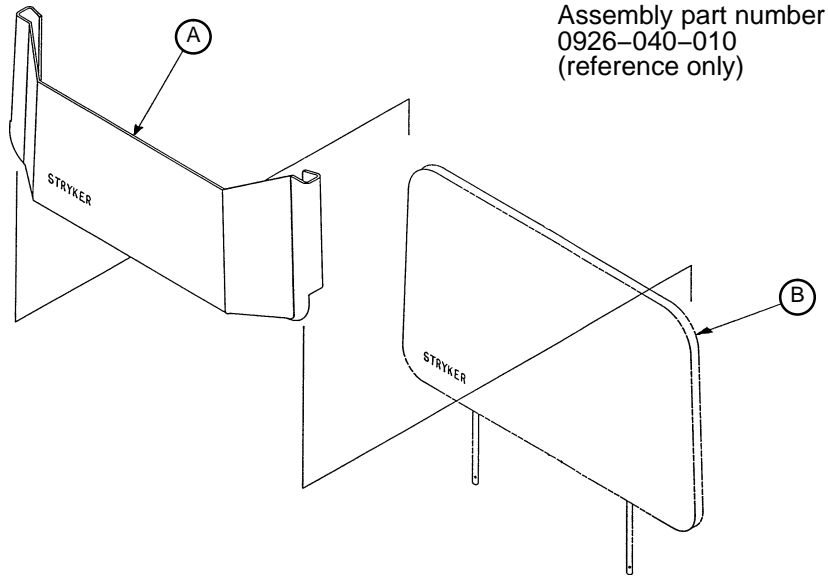
1010-050-100 Foot Extension/Defibrillator Tray Ass'y

Assembly part number 1010-050-210 (reference only)



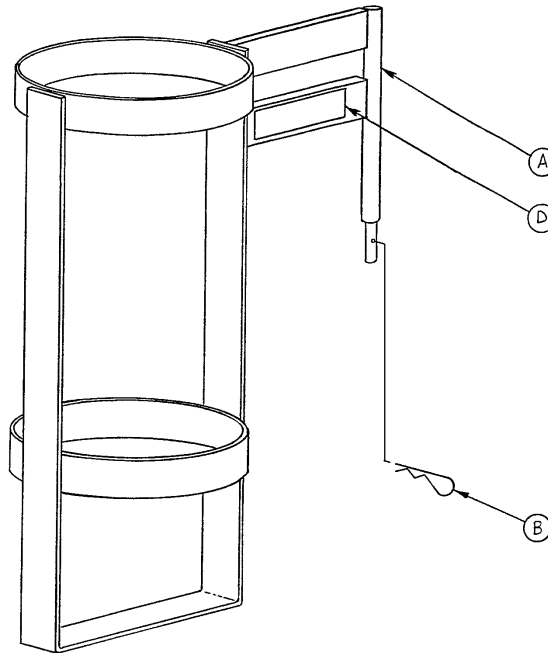
| Item | Part No. | Part Name | Qty. | Item | Part No. | Part Name | Qty. |
|------|--------------|------------------------|------|------|--------------|----------------------|------|
| A | 0008-049-000 | Soc. Hd. Shoulder Bolt | 4 | M | 1010-050-050 | Knob | 2 |
| B | 0014-020-000 | Nylon Washer | 2 | N | 1010-050-057 | "Max. Weight" Label | 4 |
| C | 0014-021-000 | Nylon Washer | 2 | P | 1010-050-205 | Cushion Assembly | 1 |
| D | 0016-028-000 | Fiberlock Nut | 4 | R | 1010-050-218 | Foot & Tray Board | 1 |
| E | 0037-052-000 | Rubber Bumper | 2 | S | 1010-050-225 | Pivot Frame Weldment | 1 |
| F | 0038-133-000 | Spring | 2 | T | 1010-050-242 | Pin Lock | 1 |
| H | 0052-017-000 | Spacer | 4 | W | 1010-050-246 | Base Mounting Ass'y | 1 |
| J | 1010-050-017 | Specification Label | 1 | Y | 1010-050-248 | Lower Pin Lock | 1 |
| K | 1010-050-019 | "Push/Pull" Label | 1 | Z | 1010-050-250 | Pin Adjuster | 1 |
| L | 1010-050-021 | Long Strap | 1 | AB | 0721-031-065 | Hole Plug | 2 |

0926-040-100 Foot Board/Chartholder Assembly



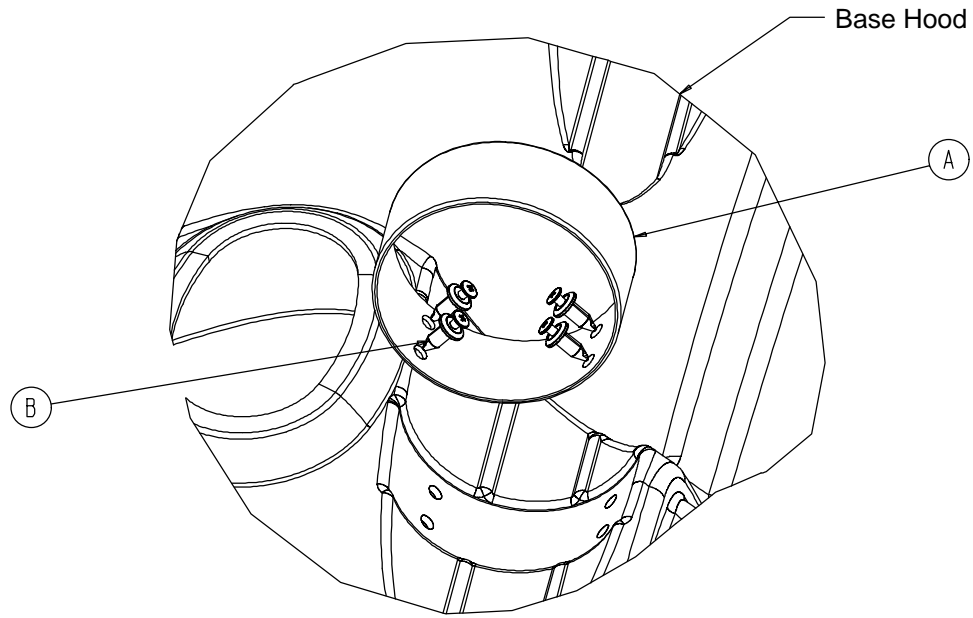
| Item | Part No. | Part Name | Qty. |
|------|--------------|--------------|------|
| A | 0946-028-011 | Chart Holder | 1 |
| B | 0946-029-006 | Foot Board | 1 |

1020-030-000 Upright Oxygen Bottle Holder Ass'y



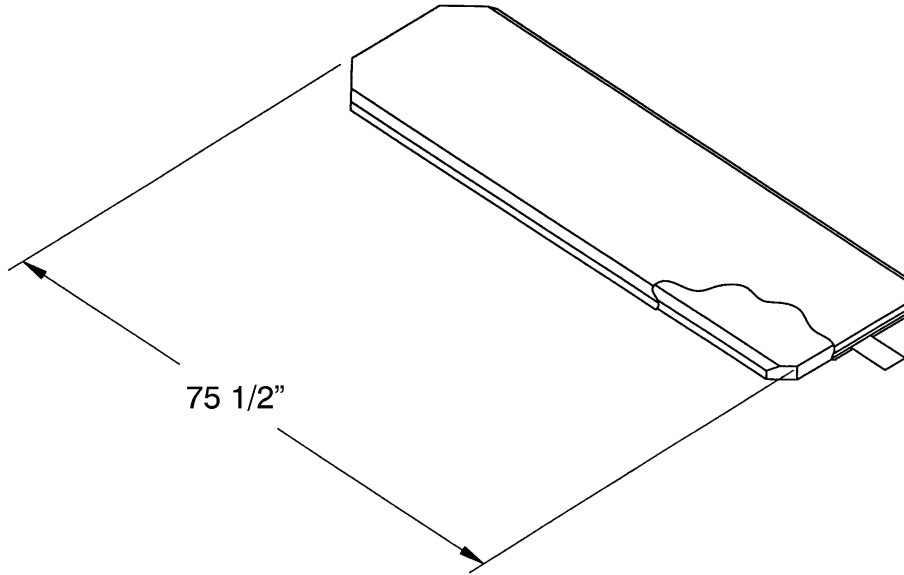
| Item | Part No. | Part Name | Qty. |
|------|--------------|-----------------------|------|
| A | 1020-030-011 | Upright Bottle Holder | 1 |
| B | 0027-012-000 | Cotter Pin | 1 |
| D | 1020-030-017 | Specification Label | 1 |

1040-010-090 Optional O₂ Bottle Retainer Assembly

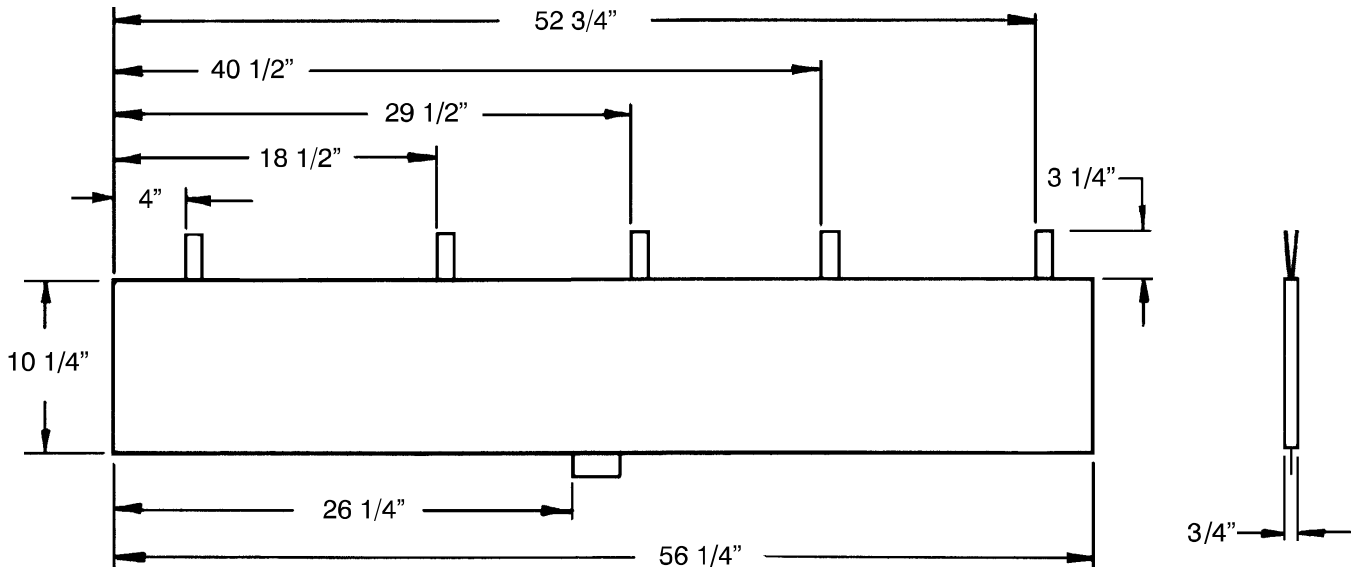


| Item | Part No. | Part Name | Qty. |
|------|--------------|------------------|------|
| A | 1040-010-091 | Bottle Retainer | 1 |
| B | 1040-010-092 | Scrulok Fastener | 4 |

Mattresses and Siderail Pads



- Mattress, 3" Thick x 24" Wide, Enhanced Comfort part # 0721-248-106
- Mattress, 4" Thick x 24" Wide, Enhanced Comfort part # 0721-247-106
- Mattress, 3" Thick x 26" Wide, Enhanced Comfort part # 1001-048-106
- Mattress, 4" Thick x 26" Wide, Enhanced Comfort part # 1001-047-106
- Mattress, 3" Thick x 24" Wide, Standard part # 1059-324-140
- Mattress, 3" Thick x 26" Wide, Standard part # 1059-326-140



- Siderail Pad Set part # 1010-052-000

Warranty

Limited Warranty:

Stryker Medical Division, a division of Stryker Corporation, warrants to the original purchaser that its products should be free from defects in material and workmanship for a period of one (1) year after date of delivery. Stryker's obligation under this warranty is expressly limited to supplying replacement parts and labor for, or replacing, at its option, any product which is, in the sole discretion of Stryker, found to be defective. Stryker warrants to the original purchaser that the frame and welds on its beds will be free from structural defects for as long as the original purchaser owns the bed. If requested by Stryker, products or parts for which a warranty claim is made shall be returned prepaid to Stryker's factory. Any improper use or any alteration or repair by others in such manner as in Stryker's judgement affects the product materially and adversely shall void this warranty. Any repair of Stryker products using parts not provided or authorized by Stryker shall void this warranty. No employee or representative of Stryker is authorized to change this warranty in any way.

Stryker Medical stretchers are designed for a 10 year expected life under normal use conditions and appropriate periodic maintenance as described in the maintenance manual for each device.

This statement constitutes Stryker's entire warranty with respect to the aforesaid equipment. STRYKER MAKES NO OTHER WARRANTY OR REPRESENTATION, EITHER EXPRESSED OR IMPLIED, EXCEPT AS SET FORTH HEREIN. THERE IS NO WARRANTY OF MERCHANTABILITY AND THERE ARE NO WARRANTIES OF FITNESS FOR ANY PARTICULAR PURPOSE. IN NO EVENT SHALL STRYKER BE LIABLE HEREUNDER FOR INCIDENTAL OR CONSEQUENTIAL DAMAGES ARISING FROM OR IN ANY MANNER RELATED TO SALES OR USE OF ANY SUCH EQUIPMENT.

To Obtain Parts and Service:

Stryker products are supported by a nationwide network of dedicated Stryker Field Service Representatives. These representatives are factory trained, available locally, and carry a substantial spare parts inventory to minimize repair time. Simply call your local representative, or call Stryker Customer Service at (800) 327-0770.

Service Contract Coverage:

Stryker has developed a comprehensive program of service contract options designed to keep your equipment operating at peak performance at the same time it eliminates unexpected costs. We recommend that these programs be activated *before* the expiration of the new product warranty to eliminate the potential of additional equipment upgrade charges.

A SERVICE CONTRACT HELPS TO:

- Ensure equipment reliability
- Stabilize maintenance budgets
- Diminish downtime
- Establish documentation for JCAHO
- Increase product life
- Enhance trade-in value
- Address risk management and safety

Warranty

Stryker offers the following service contract programs:

| SPECIFICATIONS | GOLD | SILVER | PM* ONLY |
|--|-------------|---------------|-----------------|
| Annually scheduled preventative maintenance | X | | X |
| All parts,** labor, and travel | X | X | |
| Unlimited emergency service calls | X | X | |
| Priority one contact; two hour phone response | X | X | X |
| Most repairs will be completed within 3 business days | X | X | |
| JCAHO documentation | X | X | X |
| On-site log book w/ preventative maintenance & emergency service records | X | | |
| Factory-trained Stryker Service Technicians | X | X | X |
| Stryker authorized parts | X | X | X |
| End of year summary | X | | |
| Stryker will perform all service during regular business hours (9-5) | X | X | X |

* Replacement parts and labor for products under PM contract will be discounted.

** Does not include any disposable items, I.V. poles (except for Stryker HD permanent poles), mattresses, or damage resulting from abuse.

Stryker Medical also offers *personalized* service contracts.

Pricing is determined by age, location, model and condition of product.

For more information on our service contracts, please call your local representative or call (800) 327-0770 (option #2).

Return Authorization:

Merchandise cannot be returned without approval from the Stryker Customer Service Department. An authorization number will be provided which must be printed on the returned merchandise. Stryker reserves the right to charge shipping and restocking fees on returned items.

SPECIAL, MODIFIED, OR DISCONTINUED ITEMS NOT SUBJECT TO RETURN.

Damaged Merchandise:

ICC Regulations require that claims for damaged merchandise must be made with the carrier within fifteen (15) days of receipt of merchandise. **DO NOT ACCEPT DAMAGED SHIPMENTS UNLESS SUCH DAMAGE IS NOTED ON THE DELIVERY RECEIPT AT THE TIME OF RECEIPT.** Upon prompt notification, Stryker will file a freight claim with the appropriate carrier for damages incurred. Claim will be limited in amount to the actual replacement cost. In the event that this information is not received by Stryker within the fifteen (15) day period following the delivery of the merchandise, or the damage was not noted on the delivery receipt at the time of receipt, the customer will be responsible for payment of the original invoice in full.

Claims for any short shipment must be made within thirty (30) days of invoice.

International Warranty Clause:

This warranty reflects U.S. domestic policy. Warranty outside the U.S. may vary by country. Please contact your local Stryker Medical representative for additional information.



European Representative

Stryker EMEA RA/QA Director
Stryker France
ZAC Satolas Green Pusignan
Av. De Satolas Green
69881 MEYZIEU Cedex
France

stryker[®]
Medical

6300 S. Sprinkle Road, Kalamazoo, MI 49001-9799

(800) 327-0770
www.strykermedical.com