

---

**stryker**<sup>®</sup>

**IMPORTANT**  
File in your  
maintenance  
records



---

# Transport Stretcher

---

**Model 720**

## **MAINTENANCE MANUAL**

For Parts or Technical Assistance  
1-800-327-0770 (Option 2)

---

# Table of Contents

---

Introduction	
Specifications .....	3
Warning / Caution / Note Definition .....	3
Preventative Maintenance Checklist .....	4
Cleaning .....	5
Service Information	
Caster Assembly Replacement .....	6
Caster Cover Installation And Removal .....	6
Brake Rod Removal .....	7
Brake Ring Removal .....	8
Fifth Wheel Removal .....	8
Stretcher Height Adjustment .....	9
Pneumatic Fowler Adjustment .....	9
Siderail Latch Adjustment .....	10
Transfer Board Counterbalance Adjustment .....	10
Quick Reference Replacement Parts List .....	11, 12
Assembly Drawings and Parts Lists	
Base with Standard Brakes .....	13–15
Brake Rod Assembly .....	16
Drive Link Assembly .....	17
Fifth Wheel Assembly .....	18, 19
Caster Assembly .....	20
Base Assembly with 4–Sided Brakes .....	21–23
Brake Rod Assembly .....	24, 25
Base Labeling Assembly .....	26–28
Litter Assembly .....	29–31
Manual Fowler Assembly .....	32
Pneumatic Fowler Assembly .....	33–35
Siderail Assembly, Right & Left .....	36
Short Transfer System to Frame Assembly .....	37
Short Transfer System Assembly, Right .....	38
Short Transfer System Assembly, Left .....	39
Long Transfer System to Frame Assembly .....	40
Long Transfer System Assembly, Left .....	41

# Table of Contents

---

Assembly Drawings and Parts Lists (Continued)

- Long Transfer System Assembly, Right ..... 42
- Removable I.V. Pole Assembly ..... 43
- Tethered I.V. Pole Mounting Assembly ..... 44
- Tethered I.V. Pole Assembly ..... 45
- 2-Stage I.V. Pole Assembly, Foot & Head ..... 46
- 2-Stage I.V. Pole Assembly ..... 47
- I.V. Pole Latch Assembly ..... 48
- 3-Stage I.V. Pole Assembly, Head & Foot ..... 49
- 3-Stage I.V. Pole Assembly ..... 50
- 3rd Stage Assembly ..... 51
- C-Spine Cassette Holder Assembly ..... 52
- C-Spine Support Pole Assembly ..... 53
- C-Spine Storage Bracket Assembly ..... 54
- Defibrillator Tray Assembly ..... 55
- Foot Extension/Defibrillator Tray Assembly ..... 56
- Foot Board/Chartholder Assembly ..... 57
- Upright Oxygen Bottle Holder Assembly ..... 57
- O2 Bottle Retainer Assembly ..... 58
- Mattresses and Siderail Pads ..... 59

Warranty

- Obtaining Parts and Service ..... 60
- Supplemental Warranty Coverage ..... 60
- Return Authorization ..... 61
- Freight Damage Claims ..... 61

# Introduction

---

## INTRODUCTION

This manual is designed to assist you with the maintenance of the Model 720 Transport Stretcher. Read it thoroughly before using the equipment or beginning any maintenance on it.

## SPECIFICATIONS

Maximum Weight Capacity	500 pounds
Overall Bed Length/Width	81", 30"
Fixed Height Options	28", 30", 32"
Fowler Angle	0 to 90 degrees

Stryker reserves the right to change specifications without notice.

## WARNING / CAUTION / NOTE DEFINITION

The words WARNING, CAUTION and NOTE carry special meanings and should be carefully reviewed.

---

### WARNING

Alerts the reader about a situation, which if not avoided, could result in death or serious injury. It may also describe potential serious adverse reactions and safety hazards.

---

---

### CAUTION

Alerts the reader of a potentially hazardous situation, which if not avoided, may result in minor or moderate injury to the user or patient or damage to the equipment or other property. This includes special care necessary for the safe and effective use of the device and the care necessary to avoid damage to a device that may occur as a result of use or misuse.

### NOTE

This provides special information to make maintenance easier or important instructions clearer.

# Preventative Maintenance

---

## CHECKLIST

- \_\_\_\_\_ All fasteners secure (reference all assembly prints)
- \_\_\_\_\_ Siderails move and latch properly
- \_\_\_\_\_ Engage brake pedal and push on the stretcher to ensure all casters lock securely
- \_\_\_\_\_ Steer function working properly
- \_\_\_\_\_ All casters secure and swivel properly
- \_\_\_\_\_ Body restraints working properly
- \_\_\_\_\_ I.V. pole intact and operating properly
- \_\_\_\_\_ Oxygen bottle holder intact and operating properly
- \_\_\_\_\_ Fowler operates and latches properly
- \_\_\_\_\_ No rips or cracks in mattress cover
- \_\_\_\_\_ Transfer boards intact and operating properly
- \_\_\_\_\_ Ground chain intact
- \_\_\_\_\_ Lubricate where required
- \_\_\_\_\_ Accessories and mounting hardware in good condition and working properly

Serial No. \_\_\_\_\_  
\_\_\_\_\_  
\_\_\_\_\_  
\_\_\_\_\_  
\_\_\_\_\_

Completed By: \_\_\_\_\_ Date: \_\_\_\_\_

## NOTE

Preventative maintenance should be performed at a minimum of annually. A preventative maintenance program should be established for all Stryker Medical equipment. Preventative maintenance may need to be performed more frequently based on the usage level of the product.

## NOTE

References to the right or left side of the stretcher refer to the right and left sides of a patient lying face up on the stretcher.

# Cleaning

Hand wash all surfaces of the stretcher with warm water and mild detergent. Dry thoroughly. **DO NOT STEAM CLEAN, PRESSURE WASH, HOSE OFF OR ULTRASONICALLY CLEAN.** Using these methods of cleaning is **not** recommended and may void this product's warranty.

Clean Velcro **AFTER EACH USE**. Saturate Velcro with disinfectant and allow disinfectant to evaporate. (Appropriate disinfectant for nylon Velcro should be determined by the hospital.)

In general, when used in those concentrations recommended by the manufacturer, either phenolic type or quaternary type disinfectants can be used. Iodophor type disinfectants are not recommended for use. The following products have been tested and have been found not to have a harmful effect WHEN USED IN ACCORDANCE WITH MANUFACTURERS RECOMMENDED DILUTION.\*

TRADE NAME	DISINFECTANT TYPE	MANUFACTURER	*MANUFACTURER'S RECOMMENDED DILUTION
A33	Quaternary	Airwick (Professional Products Division)	2 ounces/gallon
A33 (dry)	Quaternary	Airwick (Professional Products Division)	1/2 ounce/gallon
Beaucoup	Phenolic	Huntington Laboratories	1 ounce/gallon
Blue Chip	Quaternary	S.C. Johnson	2 ounces/gallon
Elimstaph	Quaternary	Walter G. Legge	1 ounce/gallon
Franklin Phenomysan F2500	Phenolic	Purex Corporation	1 1/4 ounce/gallon
Franklin Sentinel	Quaternary	Purex Corporation	2 ounces/gallon
Galahad	Phenolic	Puritan Churchill Chemical Company	1 ounce/gallon
Hi-Tor	Quaternary	Huntington Laboratories	1/2 ounce/gallon
LPH	Phenolic	Vestal Laboratories	1/2 ounce/gallon
Matar	Phenolic	Huntington Laboratories	1/2 ounce/gallon
Omega	Quaternary	Airwick (Professional Products Division)	1/2 ounce/gallon
Quanto	Quaternary	Huntington Laboratories	1 ounce/gallon
Sanikleen	Quaternary	West Chemical Products	2 ounces/gallon
Sanimaster II	Quaternary	Service Master	1 ounce/gallon
Vesphene	Phenolic	Vestal Laboratories	1 1/4 ounce/gallon

Quaternary Germicidal Disinfectants, used as directed, and/or Chlorine Bleach products, typically 5.25% Sodium Hypochlorite in dilutions ranging between 1 part bleach to 100 parts water, and 2 parts bleach to 100 parts water are not considered mild detergents. These products are corrosive in nature and may cause damage to your stretcher if used improperly. If these types of products are used to clean Stryker patient handling equipment, measures must be taken to insure the stretchers are rinsed with clean water and thoroughly dried following cleaning. Failure to properly rinse and dry the stretchers will leave a corrosive residue on the surface of the stretcher, possibly causing premature corrosion of critical components. Failure to follow the above directions when using these types of cleaners may void this product's warranty.

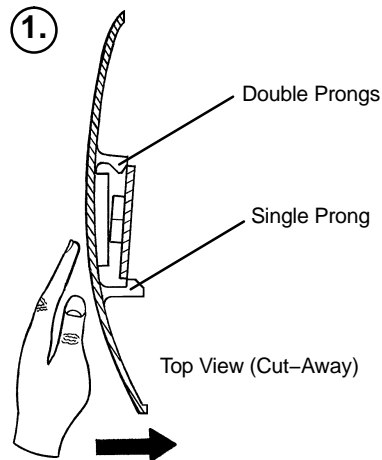
## REMOVAL OF IODINE COMPOUNDS

This solution may be used to remove iodine stains from mattress cover surfaces.

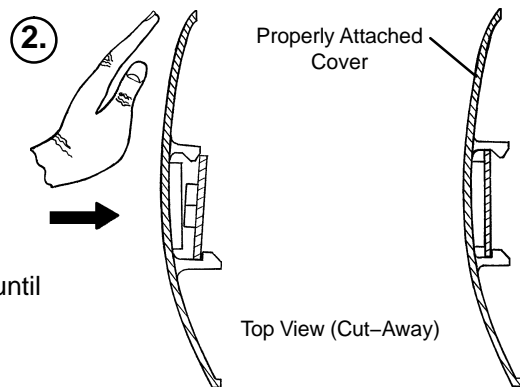
1. Use a solution of 1–2 tablespoons Sodium Thiosulfate in a pint of warm water to clean the stained area. Clean as soon as possible after staining occurs. If stains are not immediately removed, allow solution to soak or stand on the surface.
2. Rinse surfaces which have been exposed to the solution in clear water before returning bed to service.

# Service Information

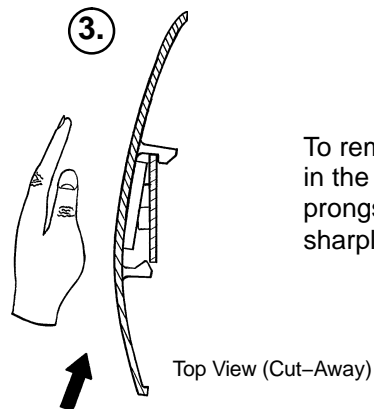
## CASTER COVER INSTALLATION AND REMOVAL



Looking through the larger of the two side cut-outs, align the cover with the axle nut or bolt head, as shown. Push down on the opposite side of the cover until the single prong engages the caster horn.



Push on the cover with your palm until the double prongs engage.



To remove the wheel cover, insert a large screwdriver into the cut-out in the side of the wheel cover and into the space between the double prongs. Pry up the cover to disengage the double prongs and push sharply upward to disengage the single prong.

## CASTER REMOVAL

### Required Tools:

9/16" Open End Wrench

1. Remove the caster cover.
2. While keeping pressure on the caster bolt with your index finger, use a 9/16" open end wrench to remove the nylock hex nut on top of the caster assembly.
3. Using the brake ring, lift up on the base assembly and pull the caster assembly down to remove it.
4. Reverse steps 1-3 to install the new caster.

# Service Information

---

## BRAKE ROD REMOVAL

### Required Tools:

Hammer

7/32" Punch

String or Bungee Cords

1. Pump the litter up to full height.
2. Lift the base hood and support it from the litter using string or bungee cords.
3. Remove the hex head cap screws connecting the brake rod supports to the base frame.
4. Remove the bolt connecting the drive link assembly to the fifth wheel cam.
5. Remove the rue ring cotter and clevis pin connecting the rod end link to the side control link.
6. Remove the rue ring cotter connecting the drive link assembly to the bearing pivot support on the base frame (under the brake ring weldment).
7. Remove the three hex washer head screws holding the brake rod assembly to the base frame.
8. Remove the slotted spring pins connecting the butterfly "V" pedals, drive link assemblies and side control link to the brake rod.
9. Reverse steps 1–8 to reinstall the brake rod. When reinstalling the brake rod supports, torque the hex head cap screws to 12–15 ft.–lbs.

---

### CAUTION

When reattaching the brake rod assembly to the base frame, set the torque specs **no higher** than 15 ft.–lbs. or damage could occur to the bolts.

## SIDE CONTROL BRAKE ROD REMOVAL

### Required Tools:

Hammer

7/32" Punch

Needle Nose Pliers

String or Bungee Cords

1. Pump the litter up to full height.
2. Lift the base hood and support it from the litter using string or bungee cords.
3. Remove the rue ring cotter and clevis pin connecting the rod end link to the side control link.
4. Remove the four bolts holding the brake rod assembly to the base frame and remove the entire assembly.
5. Using a hammer and 7/32" punch, drive the slotted spring pin out of the butterfly "V" pedal on the patient's left side and remove the pedal,
6. Using a hammer and 7/32" punch, drive the slotted spring pin out of the hard stop in the center of the support weldment.
7. Using a hammer and 7/32" punch, drive out the slotted spring pin connecting the side control link to the side control brake rod on the patient's right side.
8. Pull on the butterfly "V" pedal on the patient's right side to remove the side control brake rod from the base.
9. Reverse steps 1–8 to reinstall the brake rod. When reinstalling the assembly, torque the hex head cap screws to 12–15 ft.–lbs.

---

### CAUTION

When reattaching the brake rod assembly to the base frame, set the torque specs **no higher** than 15 ft.–lbs. or damage could occur to the bolts.



# Service Information

---

## BRAKE RING REMOVAL

### Required Tools:

9/16" Socket w/Extension    3/8" Drive Ratchet    Needle–Nose Pliers    String or Bungee Cord

1. Pump the litter up to full height.
2. Lift the base hood and support it from the litter using string or bungee cords.
3. Using needle–nose pliers, unhook the extension springs from the top of the base caster tubes.
4. Remove the plastic caster covers.
5. While putting pressure on the caster carriage bolt, use a 9/16" socket and a 3/8" drive ratchet to remove the caster nut on both sides of the stretcher.
6. Remove the casters.
7. Remove the brake rod (see procedure).
8. Remove the cotter pin from the clevis pin in the center of the brake ring weldment.
9. Remove the cotter pin from the bearing pivot support.
10. Remove the 3/4" nylock hex nut from the bearing pivot support.
11. Remove the drive link assembly.
12. Pull the brake ring down and out away from the stretcher base frame.
13. Reverse steps 1–12 to reinstall the brake ring.

## FIFTH WHEEL ASSEMBLY REMOVAL

### Required Tools:

1/2" Socket    3/8" Drive Ratchet

1. Using a 1/2" socket and 3/8" drive ratchet, remove the 1/2" bolt holding the fifth wheel cam drive link and fifth wheel drive link to the fifth wheel cam.
2. Remove the two 1/2" bolts holding the fifth wheel mounting bracket to the base frame weldment.
3. Remove the fifth wheel assembly.
4. Reverse steps 1 and 2 to reinstall the fifth wheel. When reinstalling the assembly, torque the hex head cap screws to 12–15 ft.–lbs.

---

## CAUTION

When reattaching the fifth wheel assembly to the base frame, set the torque specs **no higher** than 15 ft.–lbs. or damage could occur to the bolts.

# Service Information

---

## STRETCHER HEIGHT ADJUSTMENT

### NOTE

The 720 Transport Stretcher is available in three "fixed" heights: 28", 30", and 32". The preset stretcher height was chosen at the time of purchase. Follow the procedure below to change the stretcher height.

### Required Tools:

- 1/2" Open End Wrench
- 1/2" Socket with Ratchet

### Adjustment Procedure:

---

### WARNING

**Do not** attempt the following adjustment with a patient on the stretcher or injury could occur.

---

1. Using a 1/2" open end wrench and 1/2" socket with ratchet, remove the two hex nuts from the bolts on both the head and foot end upper tower assembly, leaving the bolts in place.
3. Lift the litter top at both ends only enough to relieve the pressure on the 4 bolts and remove the bolts and 8 washers.
4. Adjust to the desired height by aligning the appropriate holes located in both the head and foot end upper and lower tower assemblies.
5. Reinstall the 4 bolts, 8 washers and 4 self-locking nuts and tighten securely.

## PNEUMATIC FOWLER ADJUSTMENT

### Required Tools:

- 5/32" Hex Allen Wrench
- 1/2" Open End Wrench

### Adjustment Procedure:

1. For part identification, refer to [page 34](#), drawing 0721-231-120.
2. For easier access, move Fowler to 75° or higher.
3. Using a 1/2" open end wrench, loosen the nuts (item K) in the actuator arms on the end of the trip bar (F).
4. To adjust the Fowler, use a 5/32" hex Allen wrench to turn the Allen screws (item N) 1 to 2 turns counter-clockwise if the Fowler will not move or 1 to 2 turns clockwise if the Fowler will not hold its position.
5. Retighten the nuts. Be sure the Fowler will travel from flat to 90° and down again and will hold its position when weight is applied before returning the stretcher to service.

# Service Information

---

## SIDERAIL LATCH ADJUSTMENT

### Required Tools:

1/8" Hex Allen Wrench

---

### WARNING

The siderail latches are preset at the factory, and do not normally need adjustment. If adjustment must be done, it is important to follow the procedure below. If adjustment is not done properly, injury to the patient or user could occur.

---

### Adjustment Procedure:

1. Using a 1/8" hex Allen wrench, adjust the Allen screw located on the latch assembly opposite the latch. Turning the screw clockwise will **DECREASE** the amount of "play" in the latch. Turning counterclockwise will **INCREASE** the amount. The amount of "play" in the siderail, when in full up engaged position, should be approximately 1/8 to 3/16 inches.
- 

### CAUTION

Too much "play" when the siderail is in the full up engaged position will give the siderail the appearance of being unstable and could also cause premature wearing of the latch system.

Too little "play" will obstruct the latch and keep it from engaging completely in the full up position, which may cause damage to the latch and/or injury to the patient or user.

---

## TRANSFER BOARD COUNTERBALANCE ADJUSTMENT

### Required Tools:

7/16 Open End Wrench

### Adjustment Procedure:

1. Raise the transfer board to the full up position.
2. Unhook the extension spring at the eye bolt.
3. Using a 7/16 open end wrench, loosen the jam nut at the eye bolt and adjust the eye bolt to the desired position.
4. Tighten the jam nut.
5. Hook the extension spring to the eye bolt.
6. Allow the transfer board to lower on its own.
7. Repeat steps 1–7 until the desired counterbalance is achieved.

# Quick Reference Replacement Parts List

---

<b><u>PART NAME</u></b>	<b><u>PART NUMBER</u></b>
Caster Assembly (1 complete) .....	0753-010-020
Caster Cover Kit .....	1010-056-100
C-Spine Cassette Holder .....	1001-070-000
Defibrillator/Equipment Tray .....	0926-039-000
Foot Board/Chartholder Combination .....	0926-040-100
Foot Board (1 per package) .....	0946-029-001
Foot Board (2 per package) .....	0946-029-100
Foot Extension/Defibrillator Tray .....	1010-050-100
Instrument/Serving Tray .....	1052-026-000
I.V. Caddy .....	1050-001-100
I.V. Caddy Tool Kit .....	1050-010-000
I.V. Pole, Standard, Removable .....	0390-025-000
I.V. Pole, 3-Stage Permanent, Head End .....	0721-061-000
I.V. Pole, 3-Stage Permanent, Foot End .....	0721-062-000
I.V. Pole, 2-Stage Permanent .....	0721-400-001
I.V. Pole, Tethered .....	0721-117-000
Mattress, 3" x 24" Standard .....	1059-324-140
Mattress, 3" x 26" Standard .....	1059-326-140
Mattress, 3" x 24" Enhanced Comfort .....	0721-248-106
Mattress, 4" x 24" Enhanced Comfort .....	0721-247-106
Mattress, 3" x 26" Enhanced Comfort .....	1001-048-106
Mattress, 4" x 26" Enhanced Comfort .....	1001-047-106
Oxygen Bottle Holder .....	1020-030-000
Paint, Touch-Up, Gloss Black, Bottle w/Brush .....	7000-001-322
Paint, Touch-Up, Gloss Black, Spray Can .....	7000-001-319
Paint, Touch-Up, Gray, Bottle w/Brush .....	7000-001-320
Paint, Touch-Up, Gray, Spray Can .....	7000-001-317

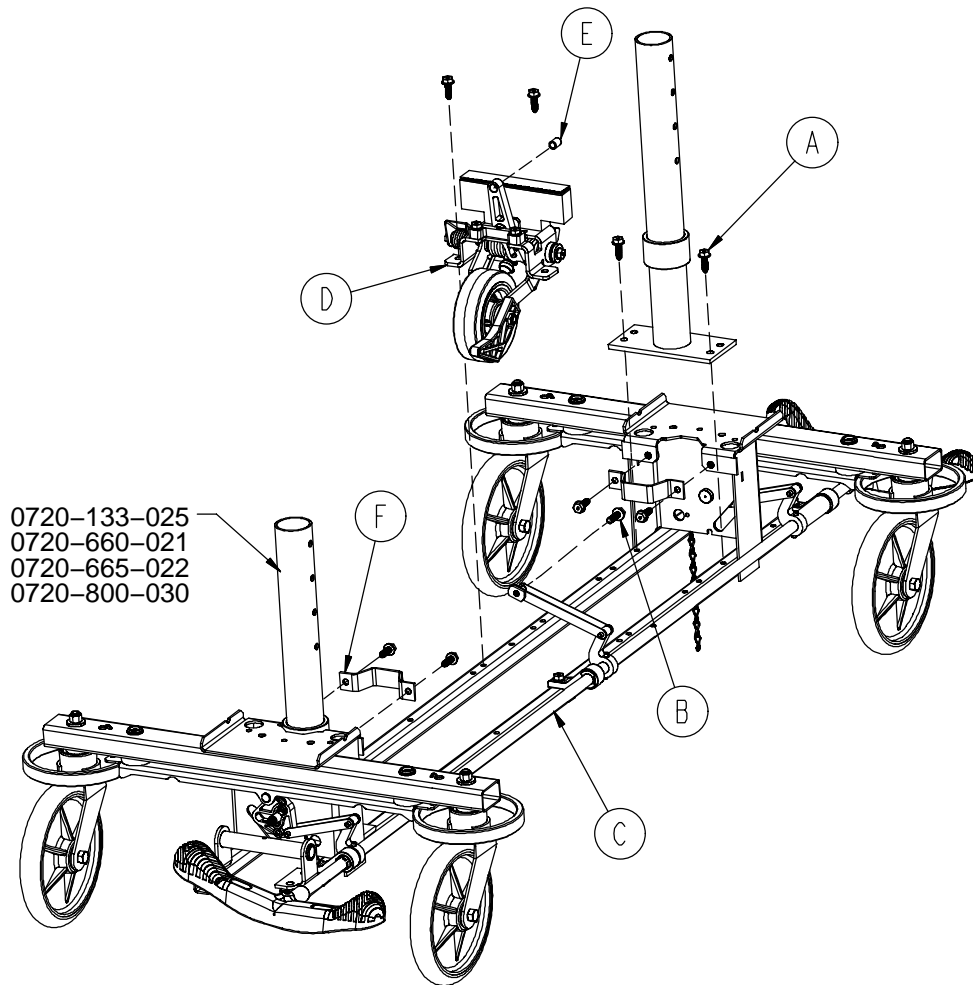
# Quick Reference Replacement Parts List

---

Restraint Straps, Complete Set . . . . .	1010-077-000
Restraint Straps, Ankle . . . . .	0946-043-000
Restraint Straps, Body . . . . .	0390-019-000
Restraint Straps, Chest . . . . .	1010-058-000
Restraint Straps, Wrist . . . . .	0946-044-000
Patient Transfer Board, Long . . . . .	0721-235-000
Patient Transfer Board, Short . . . . .	0721-239-000

# Fixed Height Base Assembly with Standard Brakes

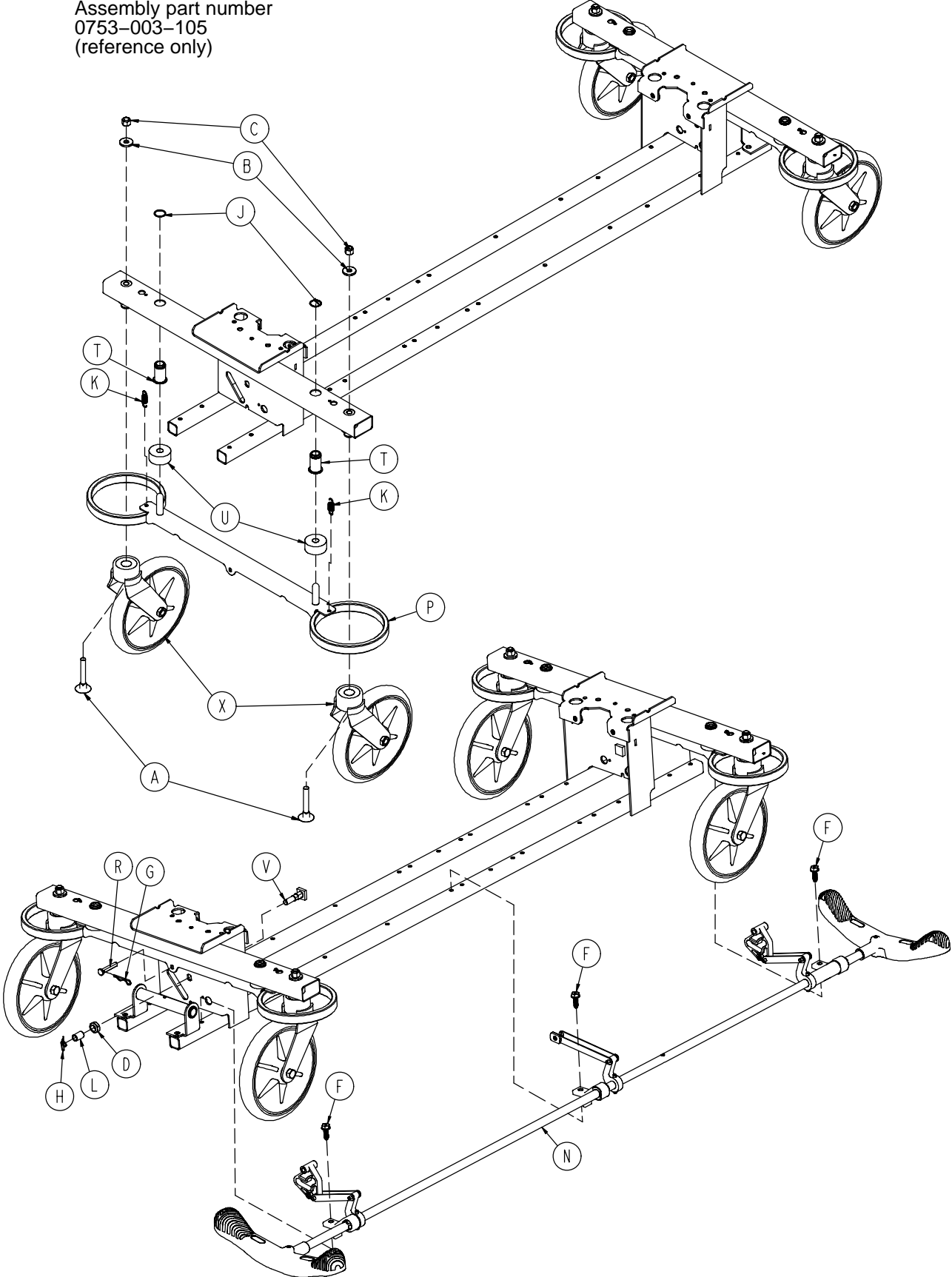
Assembly part number 0720-600-210 (reference only)



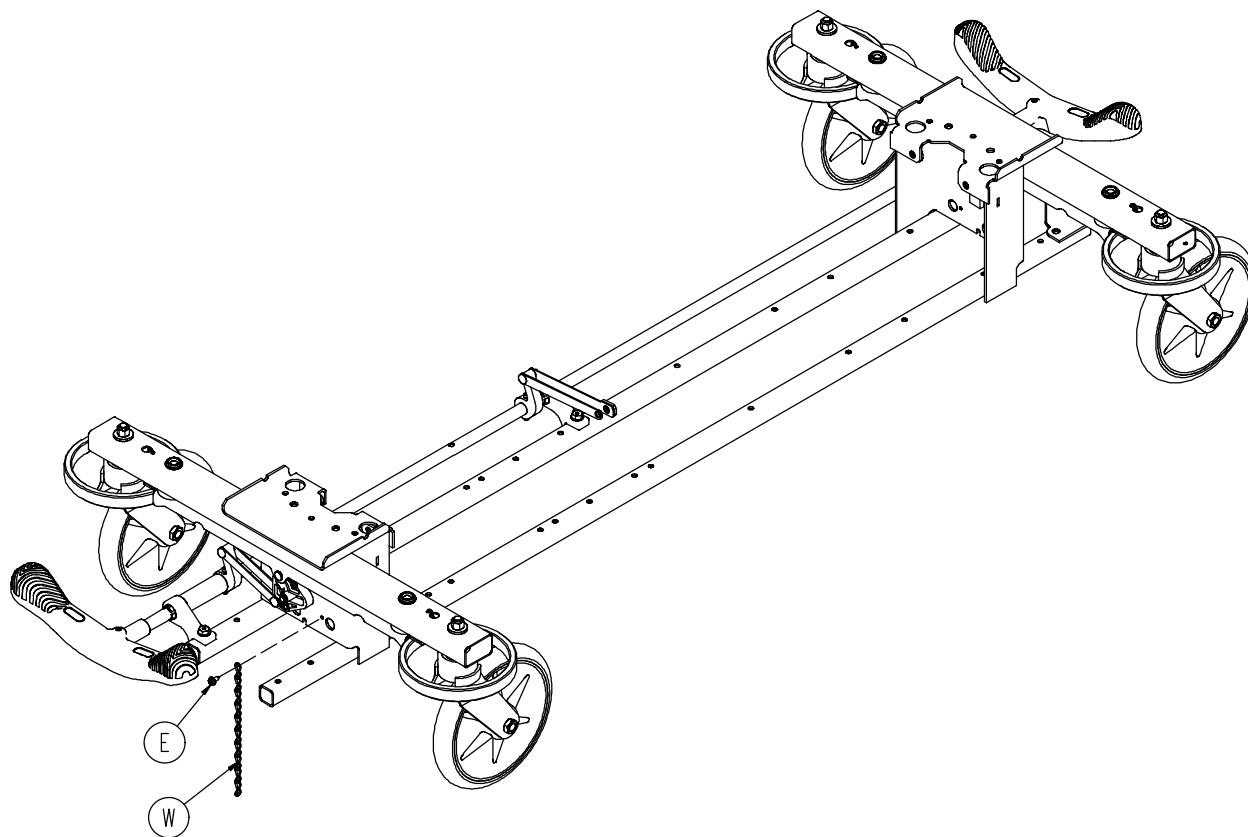
Item	Part No.	Part Name	Qty.
A	0023-288-000	Hex Washer Hd, Screw	10
B	0023-305-000	Hex Washer Hd, Screw	1
C	(page 15)	Standard Brake Assembly	1
D	(page 18)	Fifth Wheel Assembly	1
E	0753-006-148	Cam Bearing	1
F	0753-010-007	Reservoir Clamp	2
G	0720-201-032	Upper Tower (not shown)	2

# Base Assembly w/Standard Brakes (Fifth Wheel Base)

Assembly part number  
0753-003-105  
(reference only)



# Base Assembly w/Standard Brakes (Fifth Wheel Base)

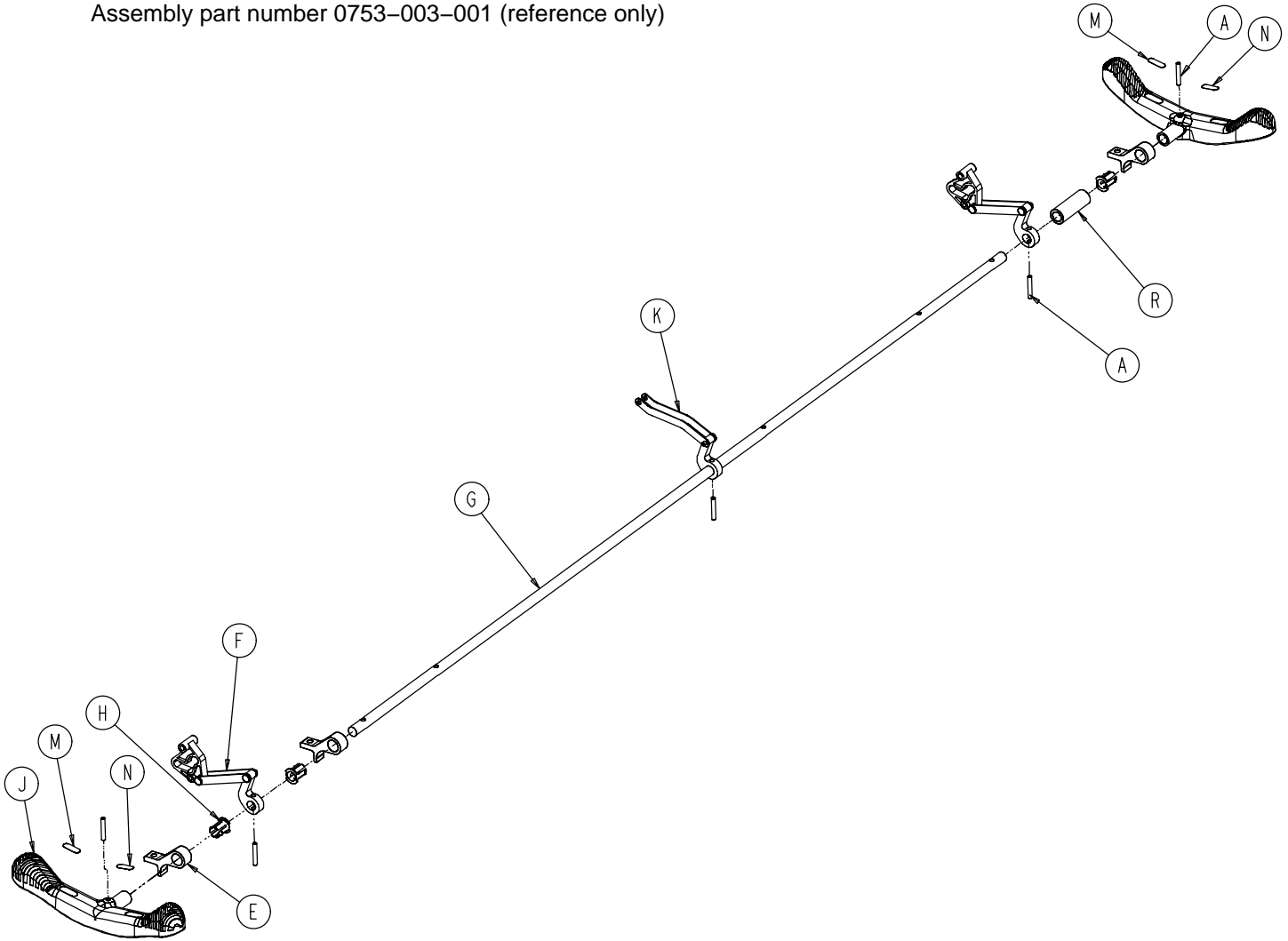


Item	Part No.	Part Name	Qty.
A	0005-039-000	Step Bolt	4
B	0011-262-000	Washer	4
C	0016-035-000	Nylock Hex Nut	4
D	0016-049-000	Nylock Hex Nut	2
E	0023-025-000	Hex Washer Hd. Screw	1
F	0023-288-000	Hex Washer Hd. Screw	3
G	0027-012-000	Hitch Pin	2
H	0027-022-000	Rue Ring Cotter	2
J	0028-037-000	External Retaining Ring	4
K	0038-439-000	Extension Spring	4
L	0081-037-000	Plane Bearing	2
M	0753-001-001	Base Frame	1
N	<a href="#">(page 16)</a>	Brake Rod Assembly	1
P	0753-003-006	Brake Ring	2
R	0753-003-066	Clevis Pin	2
T	0753-003-079	Caster Tube Brake Pin Guide	4
U	0753-003-121	Brake Cushion	4
V	0753-003-230	Bearing Pivot Support	2
W	0753-010-012	Ground Chain	1
X	<a href="#">(page 20)</a>	Caster Assembly	4



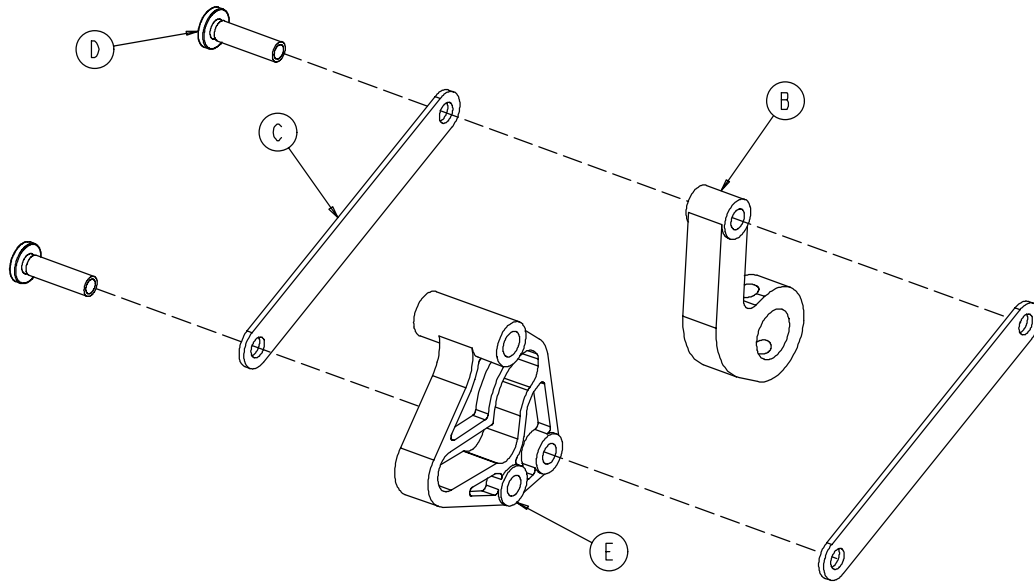
# Brake Rod Assembly

Assembly part number 0753-003-001 (reference only)



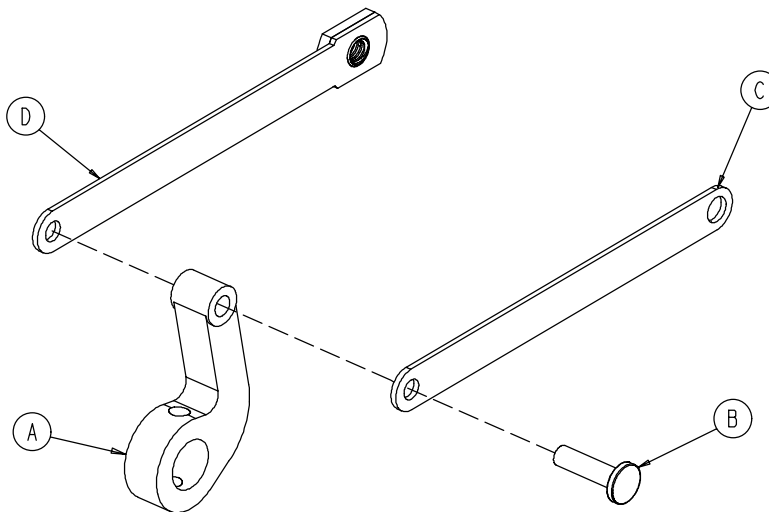
Item	Part No.	Part Name	Qty.
A	0026-067-000	Slotted Spring Pin	2
E	0753-003-004	Brake Rod Support	3
F	(page 17)	Drive Link Assembly	2
G	0753-003-014	Brake Rod	1
H	0753-003-015	Nyliner	3
J	0753-003-099	Butterfly "V" Pedal	2
K	(page 17)	Drive Link Assembly	1
M	1210-201-335	Red Brake Label	2
N	1210-201-336	Green Steer Label	2
R	0753-003-133	Retainment Spacer	1

## 0753-003-010 Drive Link Assembly



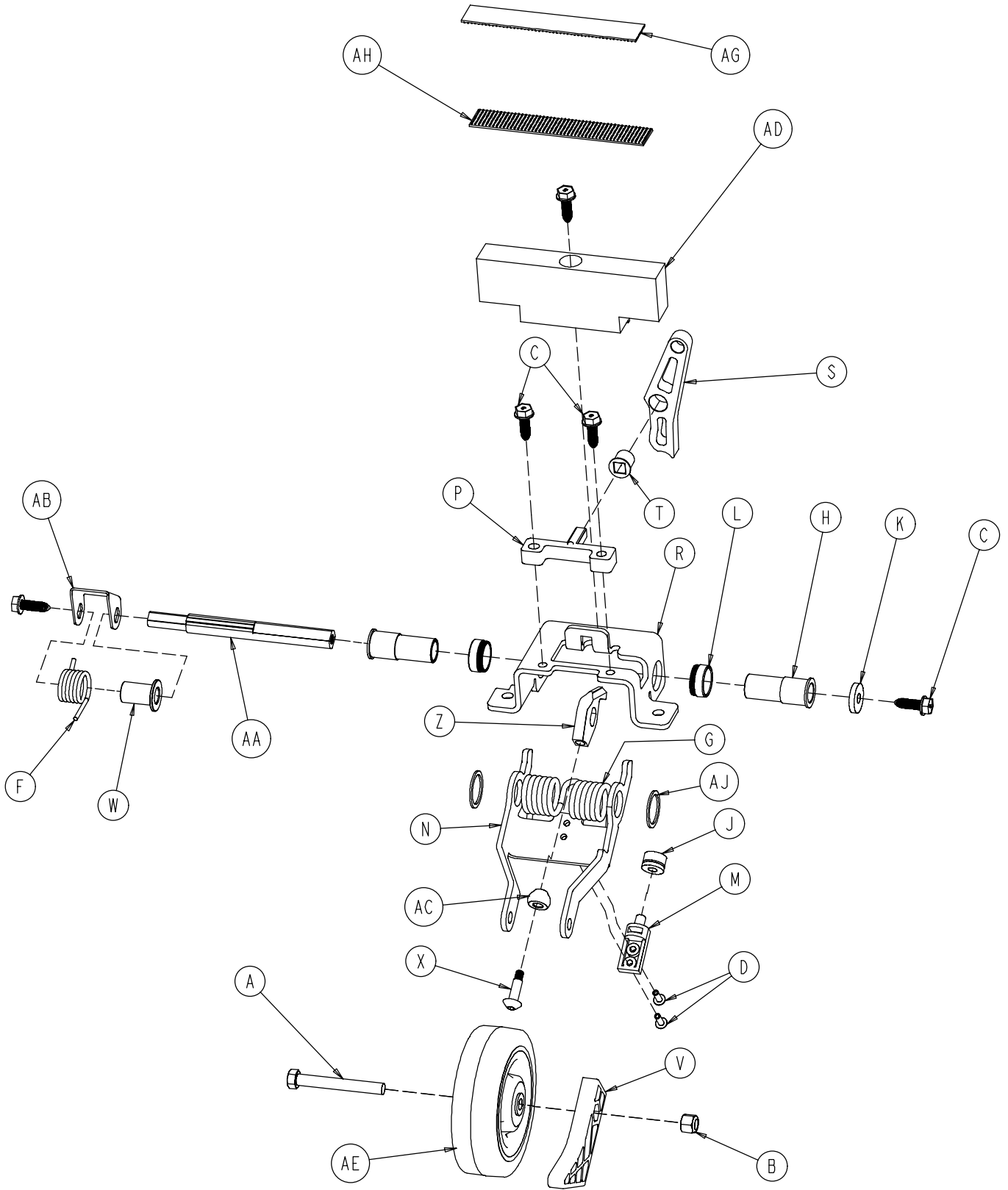
Item	Part No.	Part Name	Qty.
B	0753-003-011	Brake Rod Drive Link	1
C	0753-003-061	Brake Cam Drive Link	2
D	0753-003-098	Flat Hd. Semi-Tubular Rivet	2
E	0753-003-102	Brake Cam	1

## 0753-006-135 Drive Link Assembly



Item	Part No.	Part Name	Qty.
A	0753-003-011	Brake Rod Drive Link	1
B	0753-003-098	Semi-Tubular Rivet	1
C	0753-006-122	5th Wheel Cam Drive Link	1
D	0753-006-147	Fifth Wheel Drive Link	1

# 0753-006-130 Fifth Wheel Assembly



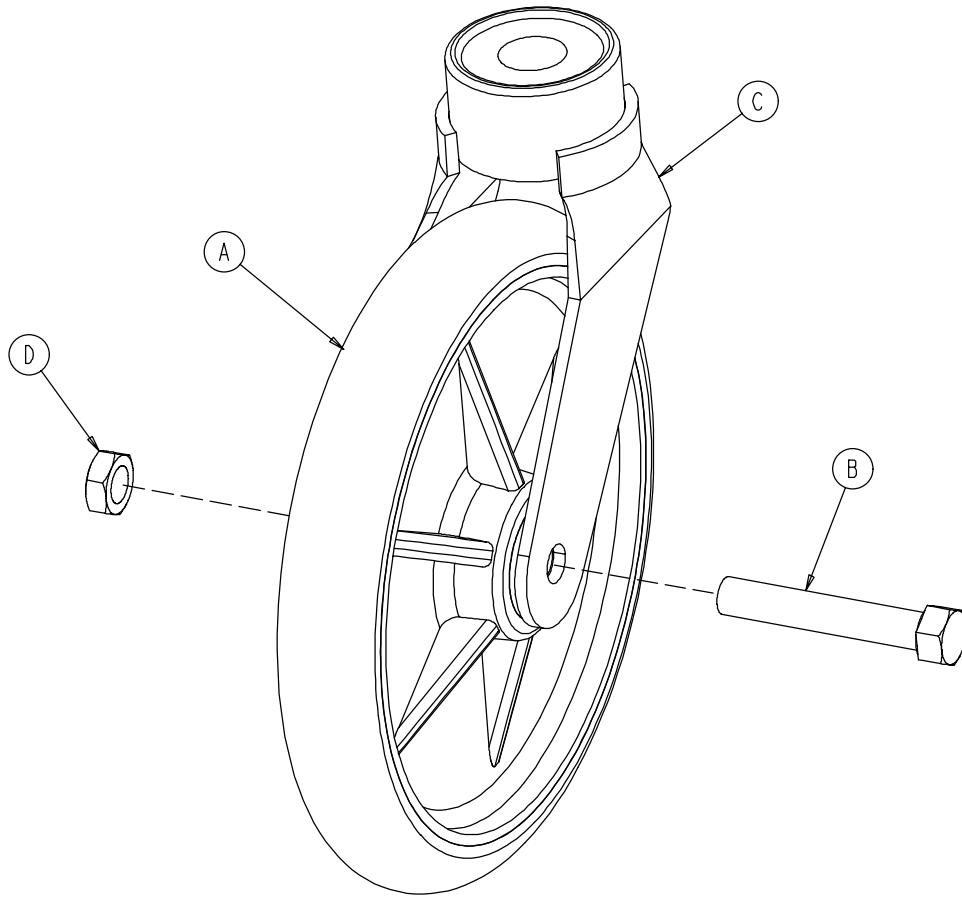
# 0753-006-130 Fifth Wheel Assembly

---

Item	Part No.	Part Name	Qty.
A	0003-083-000	Hex Hd. Cap Screw	1
B	0016-035-000	Nylock Hex Nut	1
C	0023-288-000	Hex Washer Hd. Screw	5
D	0025-050-000	Rivet	2
F	0753-006-074	Torsion Spring	1
G	0753-006-075	Torsion Spring	1
H	0753-006-097	Drive Shaft Bearing	2
J	0753-006-106	Dampener	1
K	0753-006-108	Thrust Washer	1
L	0753-006-115	Bearing	2
M	0753-006-120	Bumper Mounting Pin	1
N	0753-006-126	Wheel Bracket	1
P	0753-006-133	Cam Pivot Block	1
R	0753-006-134	Fifth Wheel Mounting Bracket	1
S	0753-006-142	Fifth Wheel Cam	1
T	0753-006-143	Cam Bearing	1
V	0753-006-149	5th Wheel Ramp	1
W	0753-006-152	Spring Spacer	1
X	0753-006-153	Roller Stem	1
Z	0753-006-198	Drive Pin	1
AA	0753-006-223	Drive Shaft	1
AB	0753-006-227	Return Spring Hook	1
AC	0753-006-277	Roller	1
AD	0753-010-045	Hood Standoff	1
AE	1210-001-147	Wheel	1
AG	0753-006-280	Dual Lock	1
AH	0753-006-281	Dual Lock	1
AJ	0011-360-000	Washer	2

# 0753-010-020 8" Caster Assembly

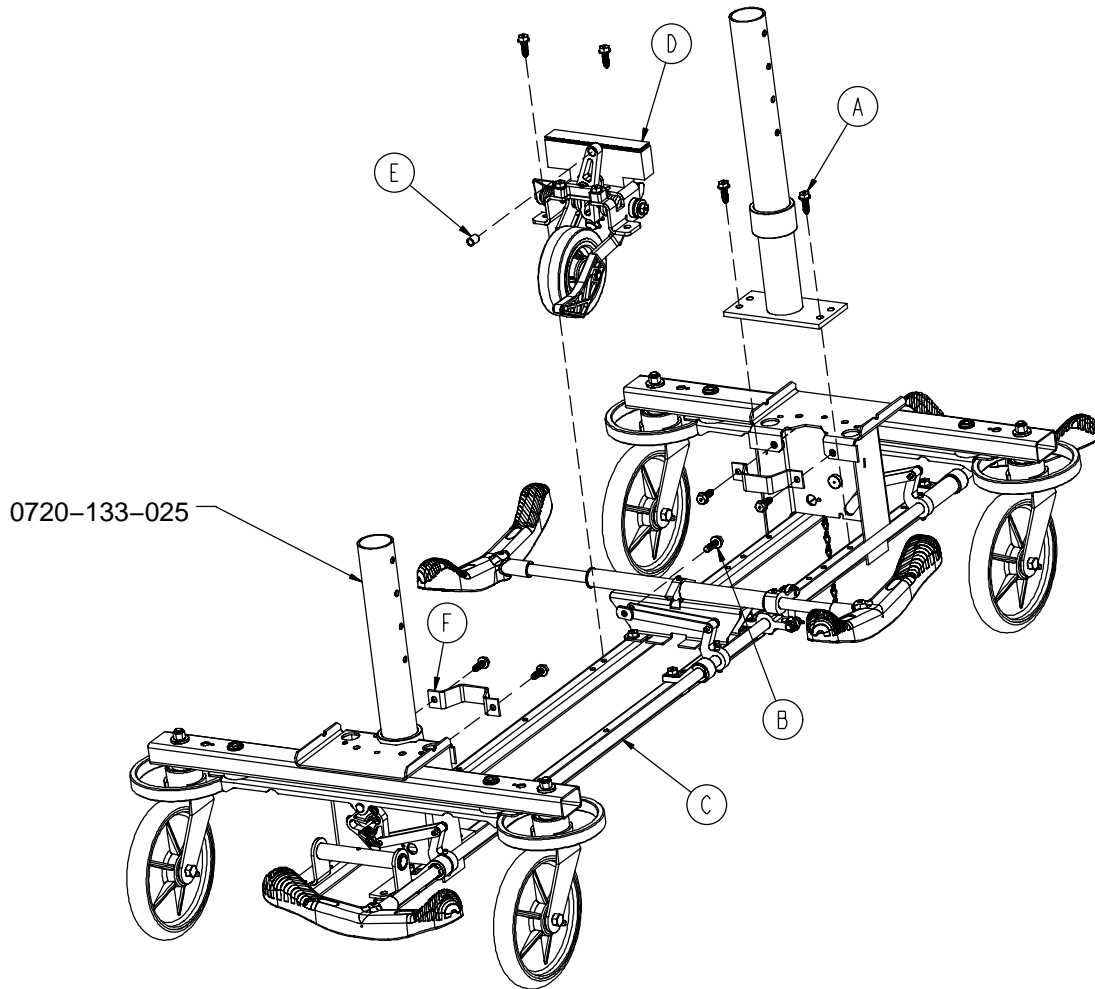
---



Item	Part No.	Part Name	Qty.
A	0715-002-025	Wheel	1
B	0003-099-000	Hex Hd. Cap Screw	1
C	0753-010-021	Caster Horn w/Bearing	1
D	0016-060-000	Centerlock Nut	1

# Fixed Height Base Assembly with 4-Sided Brakes

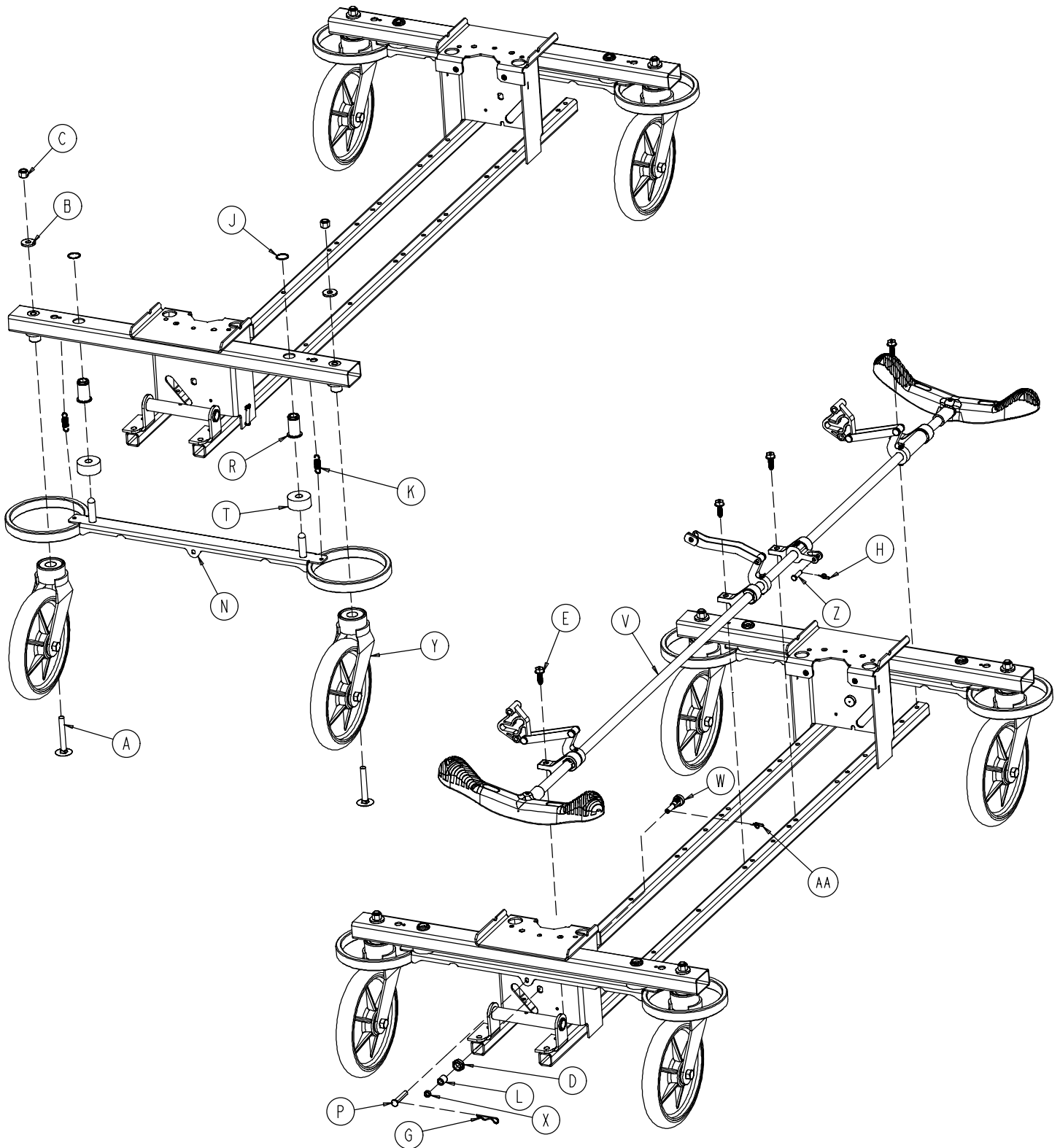
Assembly part number 0720-600-310 (reference only)



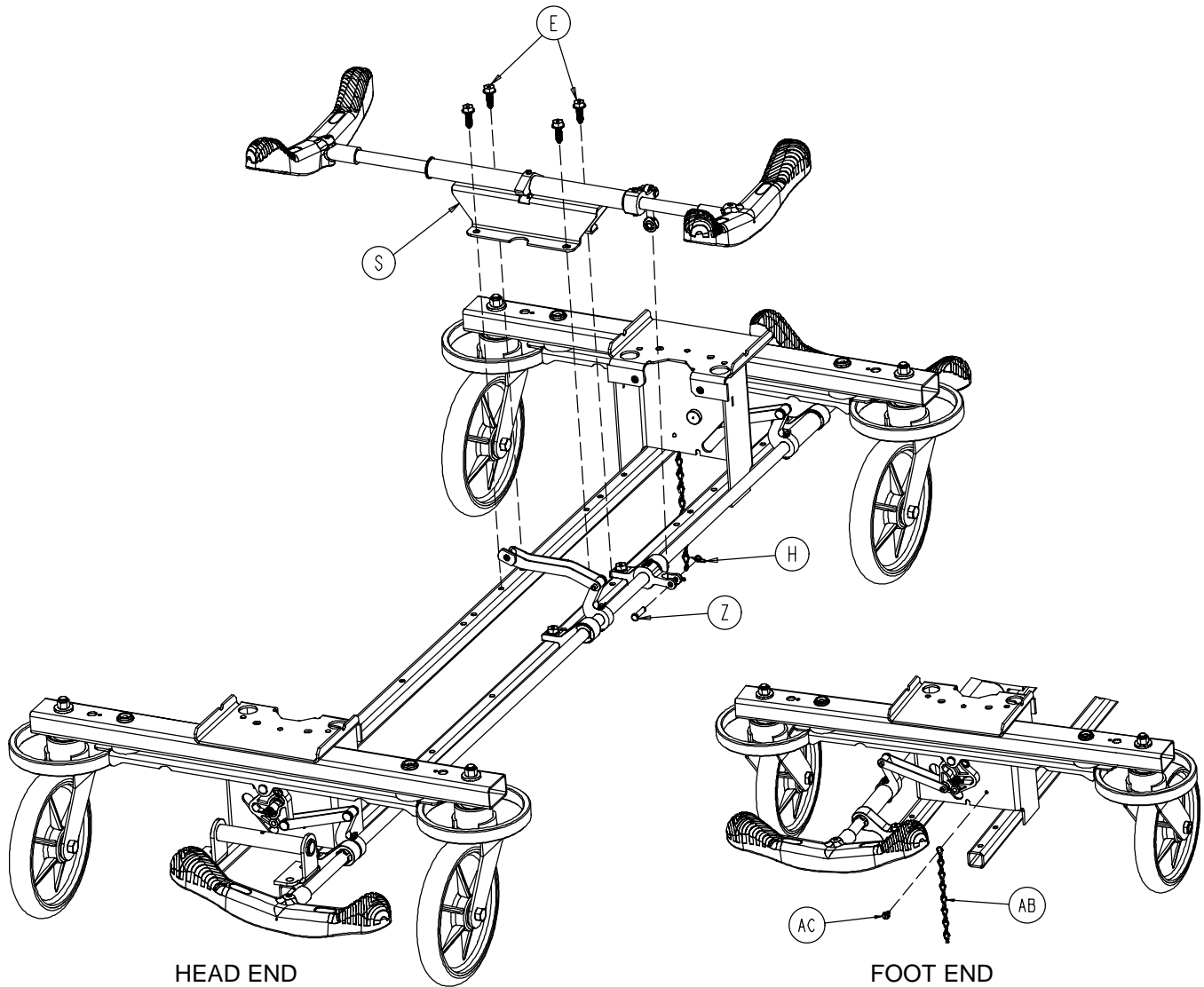
Item	Part No.	Part Name	Qty.
A	0023-288-000	Hex Washer Hd. Screw	10
B	0023-305-000	Hex Washer Hd. Screw	1
C	(page 22)	Side Control Brake Assembly	1
D	(page 18)	Fifth Wheel Assembly	1
E	0753-006-148	Cam Bearing	1
F	0753-010-007	Reservoir Clamp	2
G	0720-201-032	Upper Tower (not shown)	2

# Base Assembly with 4-Sided Brakes

Assembly part number 0753-003-120 (reference only)



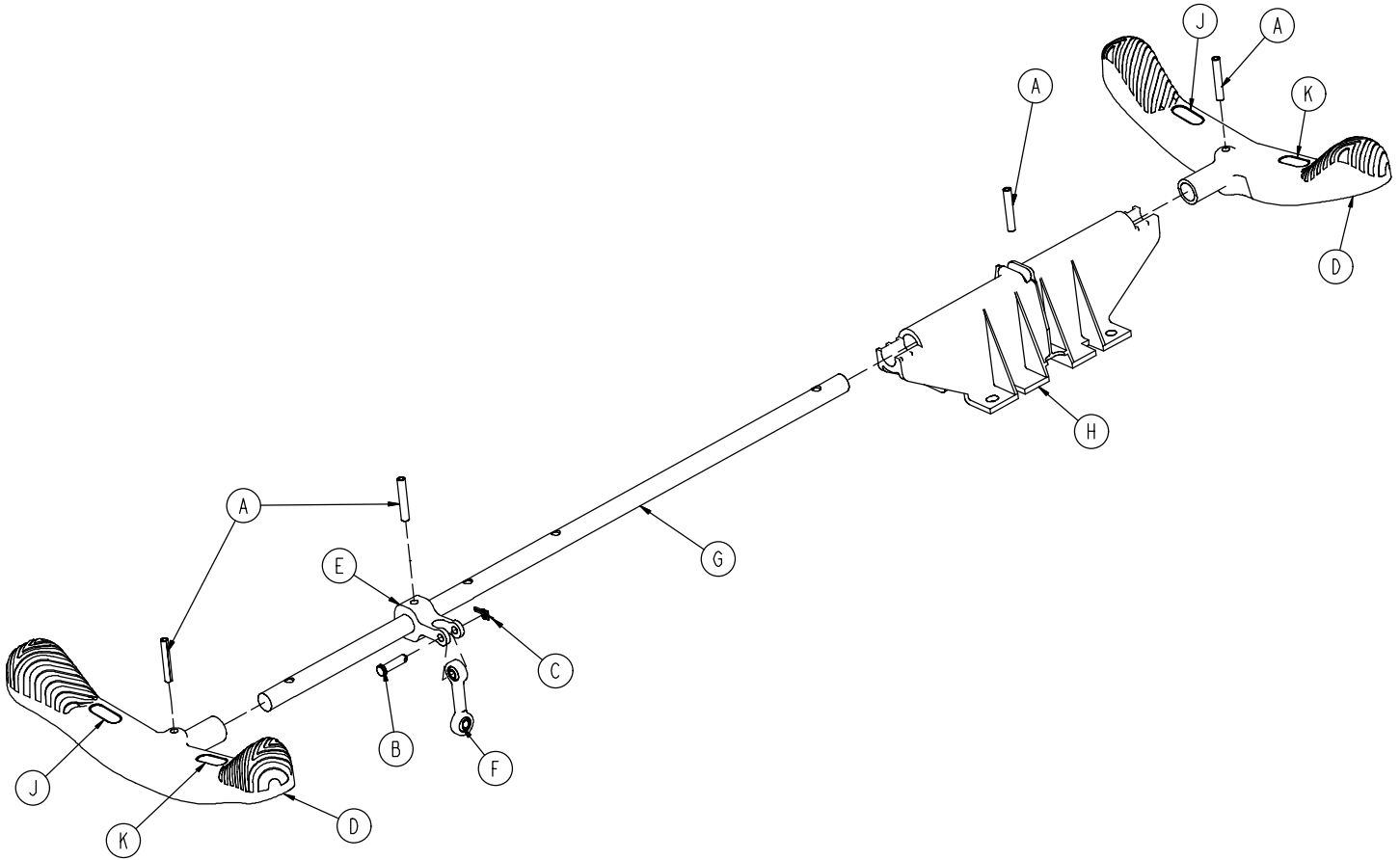
# Base Assembly with 4-Sided Brakes



Item	Part No.	Part Name	Qty.	Item	Part No.	Part Name	Qty.
A	0005-039-000	Step Bolt	4	P	0753-003-066	Clevis Pin	2
B	0011-262-000	Washer	4	R	0753-003-079	Brake Pin Guide	4
C	0016-035-000	Nylock Hex Nut	4	S	(page 24)	Side Brake Rod Ass'y	1
D	0016-049-000	Nylock Hex Nut	2	T	0753-003-121	Brake Cushion	4
E	0023-288-000	Hex Washer Hd. Screw	8	V	(page 25)	Brake Rod Assembly	1
G	0027-012-000	Hitch Pin	2	W	0753-003-130	Bearing Pivot Support	2
H	0027-020-000	Rue Ring Cotter	1	X	0753-003-131	Spacer	2
J	0028-037-000	External Retaining Ring	4	Y	(page 20)	Caster Assembly	4
K	0038-439-000	Extension Spring	4	Z	0026-340-000	Clevis Pin	1
L	0081-272-000	Roller Bearing	2	AA	0027-019-000	Rue Ring Cotter Pin	2
M	0753-001-001	Base Weldment	1	AB	0753-010-012	Ground Chain	1
N	0753-003-006	Brake Ring Weldment	2	AC	0023-025-000	H. Washer Hd. Tap. Scr.	1



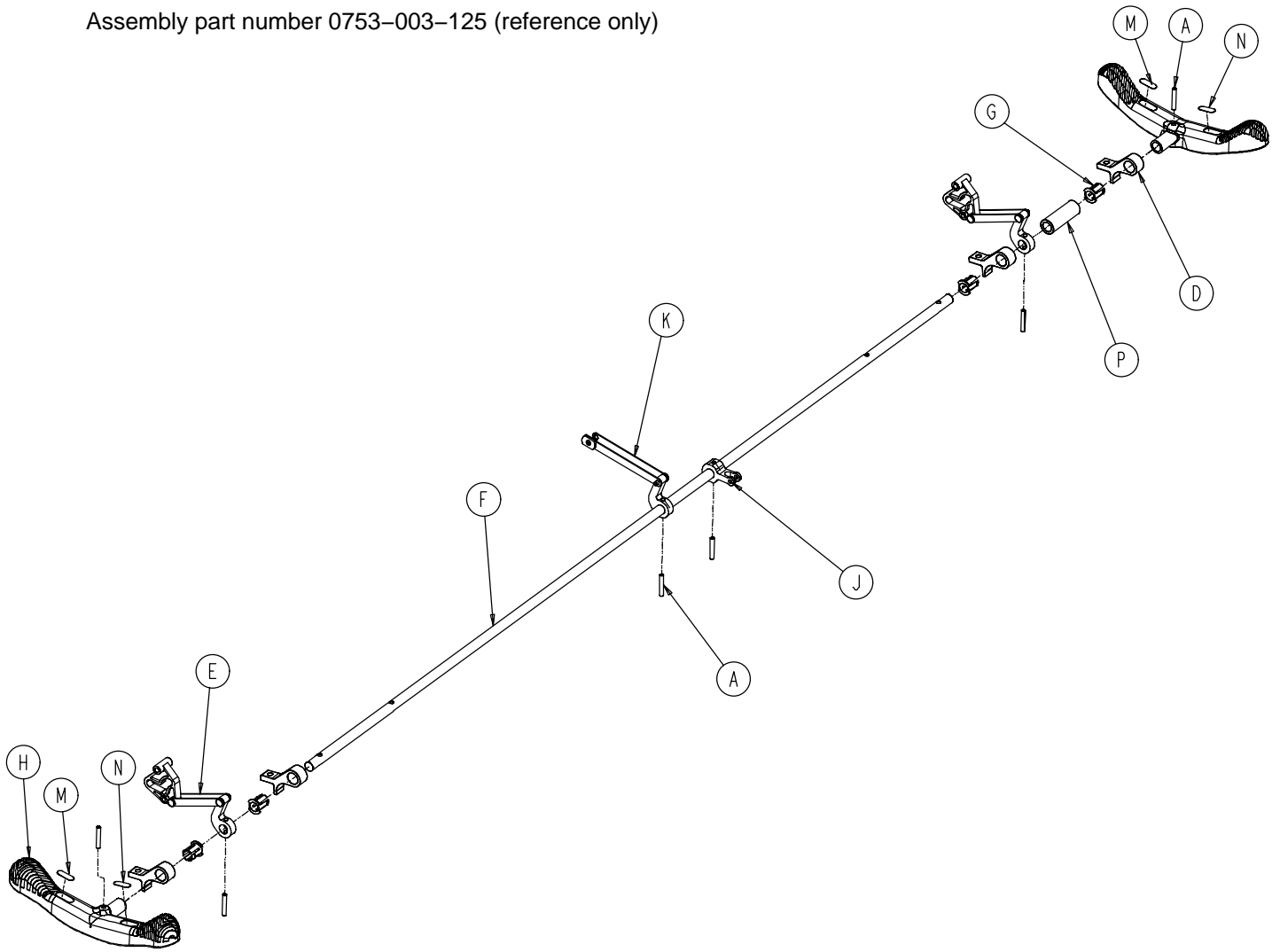
# 0753-003-210 Side Control Brake Rod Assembly



Item	Part No.	Part Name	Qty.
A	0026-067-000	Slotted Spring Pin	4
B	0026-340-000	Clevis Pin	1
C	0027-020-000	Rue Ring Cotter	1
D	0753-003-099	Butterfly "V" Pedal	2
E	0753-003-112	Side Control Link	1
F	0753-003-117	Rod End Link	1
G	0753-003-119	Side Control Brake Rod	1
H	0753-003-214	Shaft Support	1
J	1210-201-335	Red Brake Label	2
K	1210-201-336	Green Steer Label	2

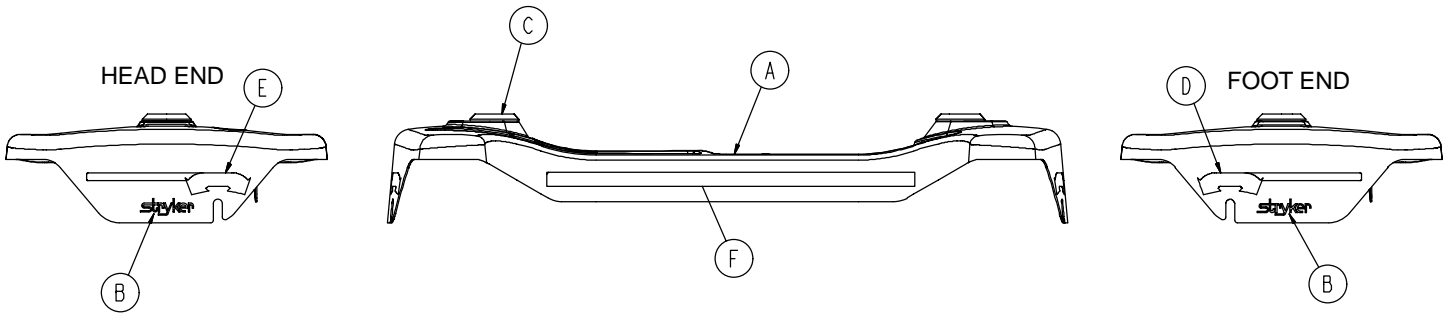
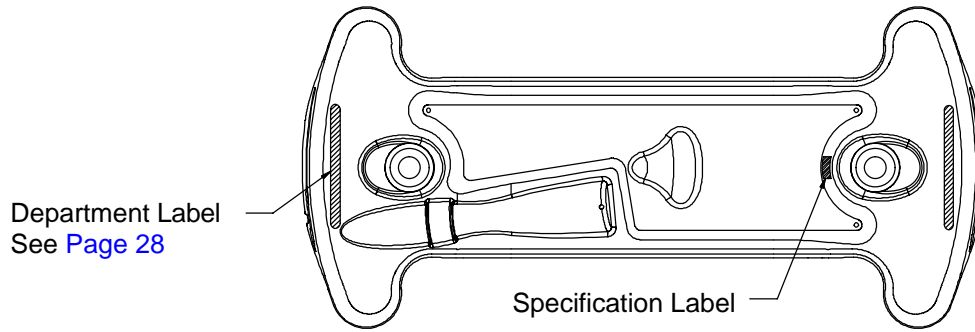
# Brake Rod Assembly

Assembly part number 0753-003-125 (reference only)



Item	Part No.	Part Name	Qty.
A	0026-067-000	Slotted Spring Pin	6
D	0753-003-004	Brake Rod Support	4
E	(page 17)	Drive Link Assembly	2
F	0753-003-014	Brake Rod	1
G	0753-003-015	Brake Rod Nyliner	4
H	0753-003-099	Butterfly "V" Pedal	2
J	0753-003-112	Side Control Link	1
K	(page 17)	Drive Link Assembly	1
M	1210-201-335	Red Brake Label	2
N	1210-201-336	Green Steer Label	2
P	0753-003-133	Retainment Spacer	1

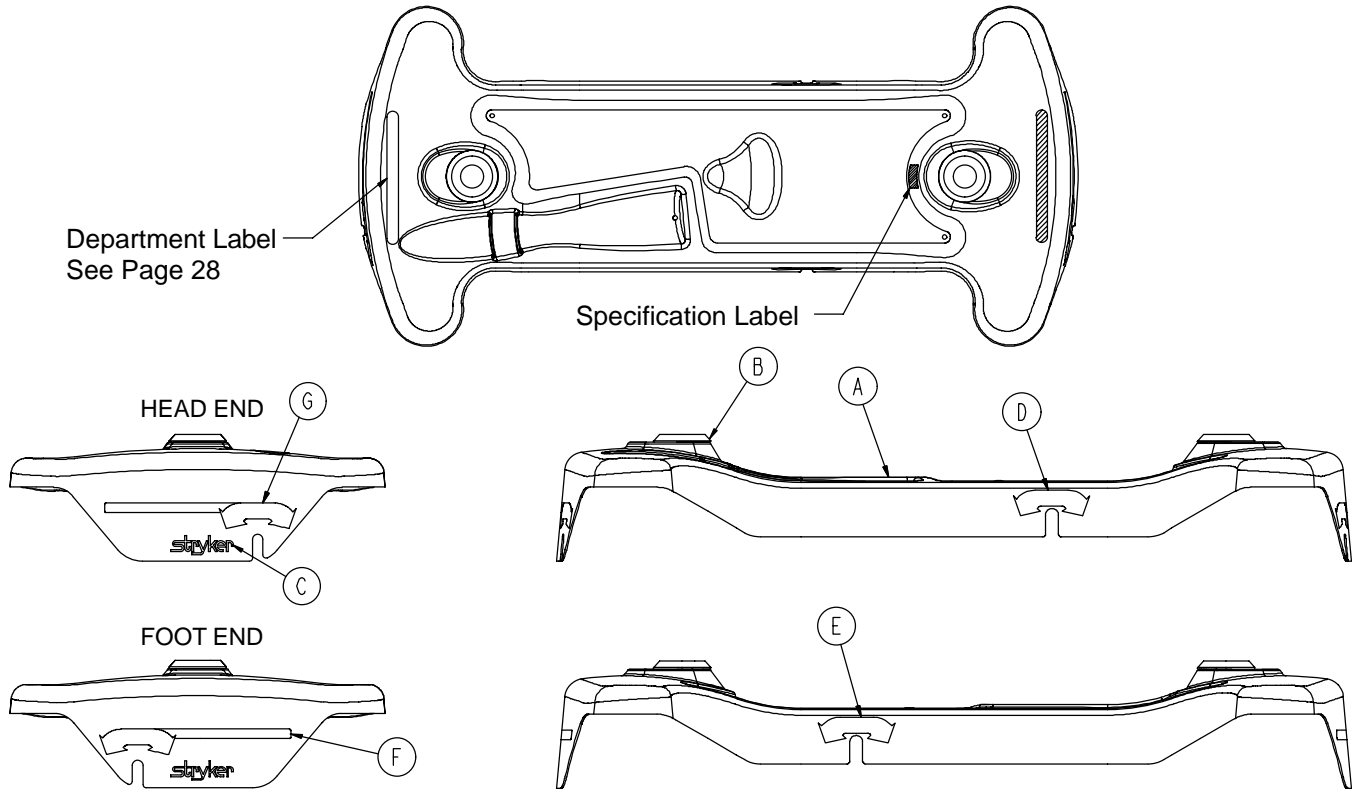
# Base with Standard Brakes Labeling Assembly



Item	Part No.	Part Name	Qty.
A	0753-010-046	Base Hood	1
B	0946-201-060	Stryker Logo Label	2
C	0946-421-005	Grommet	2

Color Set P/N	Item D Brake/Steer Label, Foot End	Item E Brake/Steer Label, Head End	Item F Side Stripe	Litter Bumper Strip
RED 0720-800-021	0753-010-051	0753-010-017	1001-800-013	1010-700-015
PURPLE 0720-800-022	0753-010-151	0753-010-170	1001-800-023	1010-700-025
GREEN 0720-800-023	0753-010-251	0753-010-270	1001-800-033	1010-700-035
GRAY 0720-800-024	0753-010-351	0753-010-370	1001-800-043	1010-700-045
TEAL 0720-800-025	0753-010-451	0753-010-470	1001-800-053	1010-700-055
PINK 0720-800-026	0753-010-551	0753-010-570	1001-800-063	1010-700-065
BLUE 0720-800-027	0753-010-651	0753-010-670	1001-800-073	1010-700-075

# Base with 4-Sided Brakes Labeling Assembly



Item	Part No.	Part Name	Qty.
A	0753-010-047	Base Hood	1
B	0946-421-005	Grommet	2
C	0946-201-060	Stryker Logo Label	2
D	0753-010-018	Brake/Steer Label, Right	1
E	0753-010-019	Brake/Steer Label, Left	1

Color Set Part Number	Item F Brake/Steer Label, Foot End	Item G Brake/Steer Label, Head End	Litter Bumper Strip
RED 0720-800-021	0753-010-051	0753-010-017	1010-700-015
PURPLE 0720-800-022	0753-010-151	0753-010-170	1010-700-025
GREEN 0720-800-023	0753-010-251	0753-010-270	1010-700-035
GRAY 0720-800-024	0753-010-351	0753-010-370	1010-700-045
TEAL 0720-800-025	0753-010-451	0753-010-470	1010-700-055
PINK 0720-800-026	0753-010-551	0753-010-570	1010-700-065
BLUE 0720-800-027	0753-010-651	0753-010-670	1010-700-075

# Department Labels

---

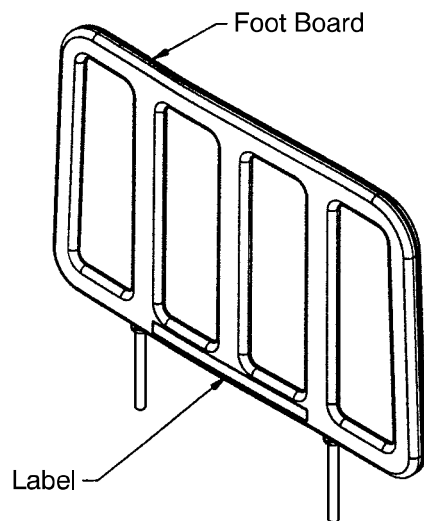
## BASE HOOD DEPARTMENT LABELS

Department	Label Part Number
Emergency	1010-900-215
PACU	1010-900-220
Transport	1010-900-225
Surgery	1010-900-230
Extended Stay	1010-900-235
Maternity	1010-900-240
Endoscopy	1010-900-245
Radiology	1010-900-250
Nuclear Medicine	1010-900-255
Ambulatory Surgery	1010-900-260
G.I. Lab	1010-900-265
Cath. Lab	1010-900-270
Same Day Surgery	1010-900-275
Cardio.	1010-900-280
Ultrasound	1010-900-285

### NOTE

All base hood department labels are quantity of two.

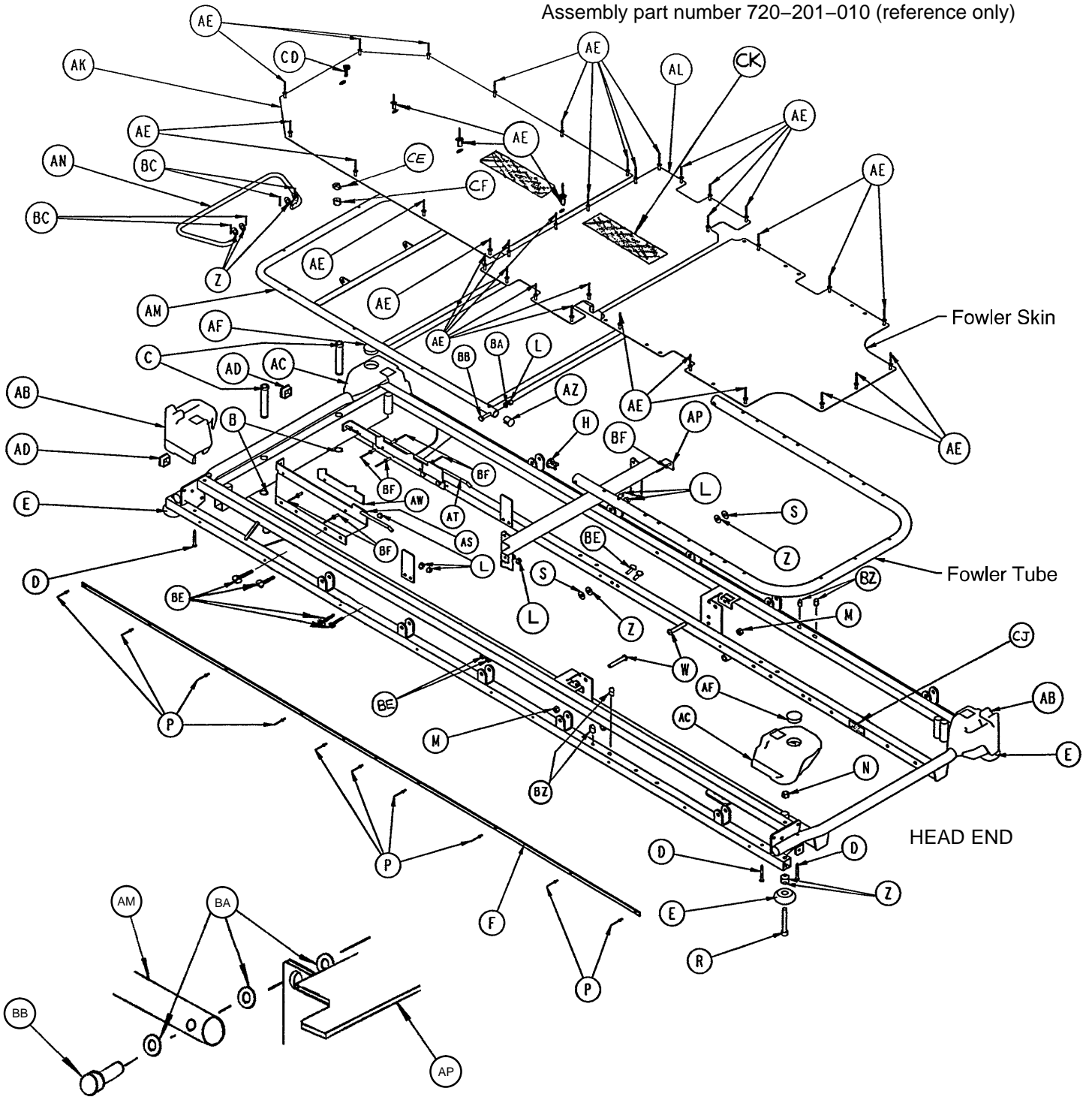
## FOOT BOARD DEPARTMENT LABELS



Department	Label Part No.
Demo Stryker	1010-900-186
Ophthalmology	1010-900-187
Outpatient Surgery	1010-900-188
Recovery	1010-900-189
Trauma	1010-900-190
Urgence	1010-900-191
Special (Blank)	1010-900-192

# Litter Assembly

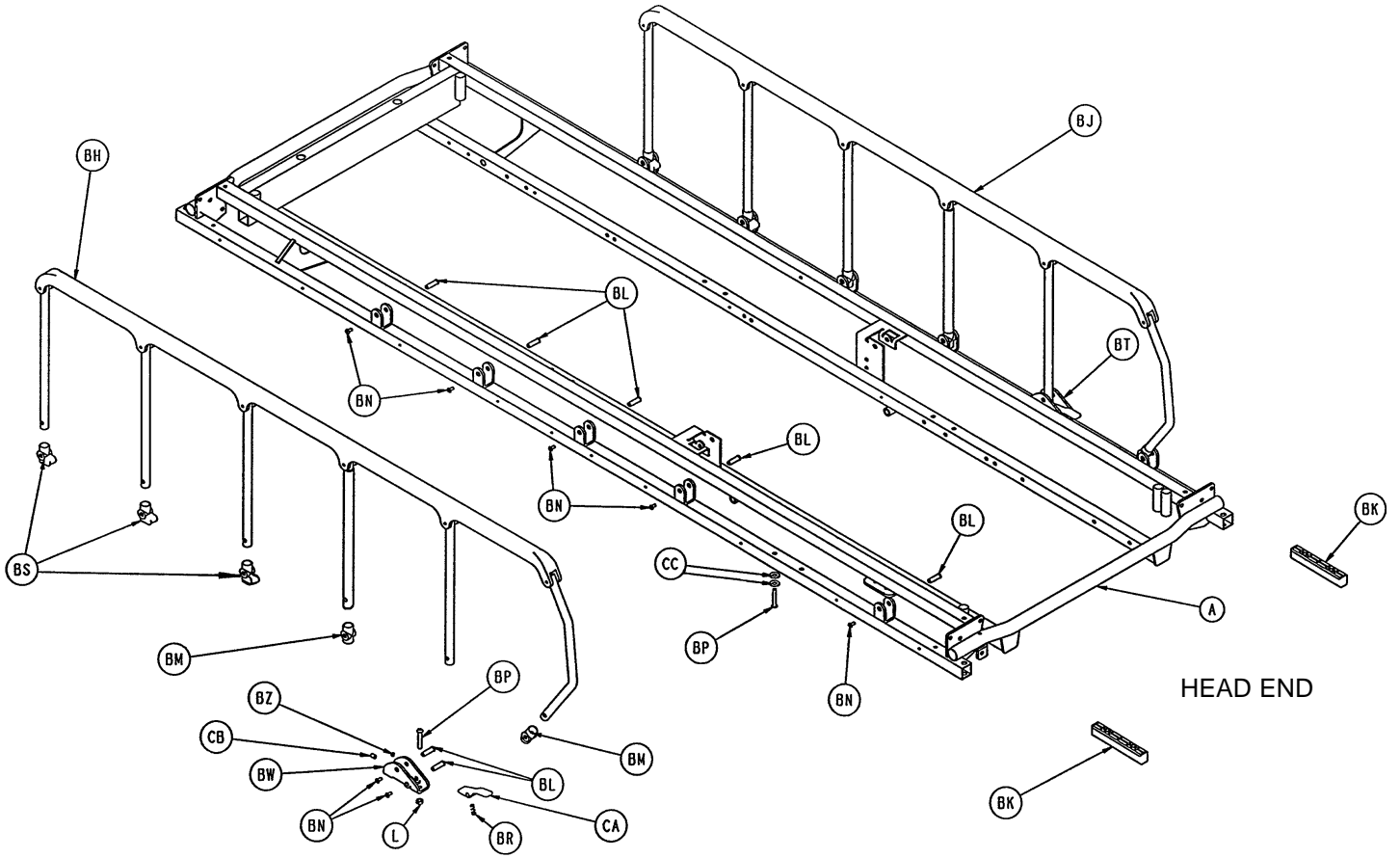
Assembly part number 720-201-010 (reference only)



Detail of Foot Section  
Tube and Fasteners

# Litter Assembly

---



# Litter Assembly

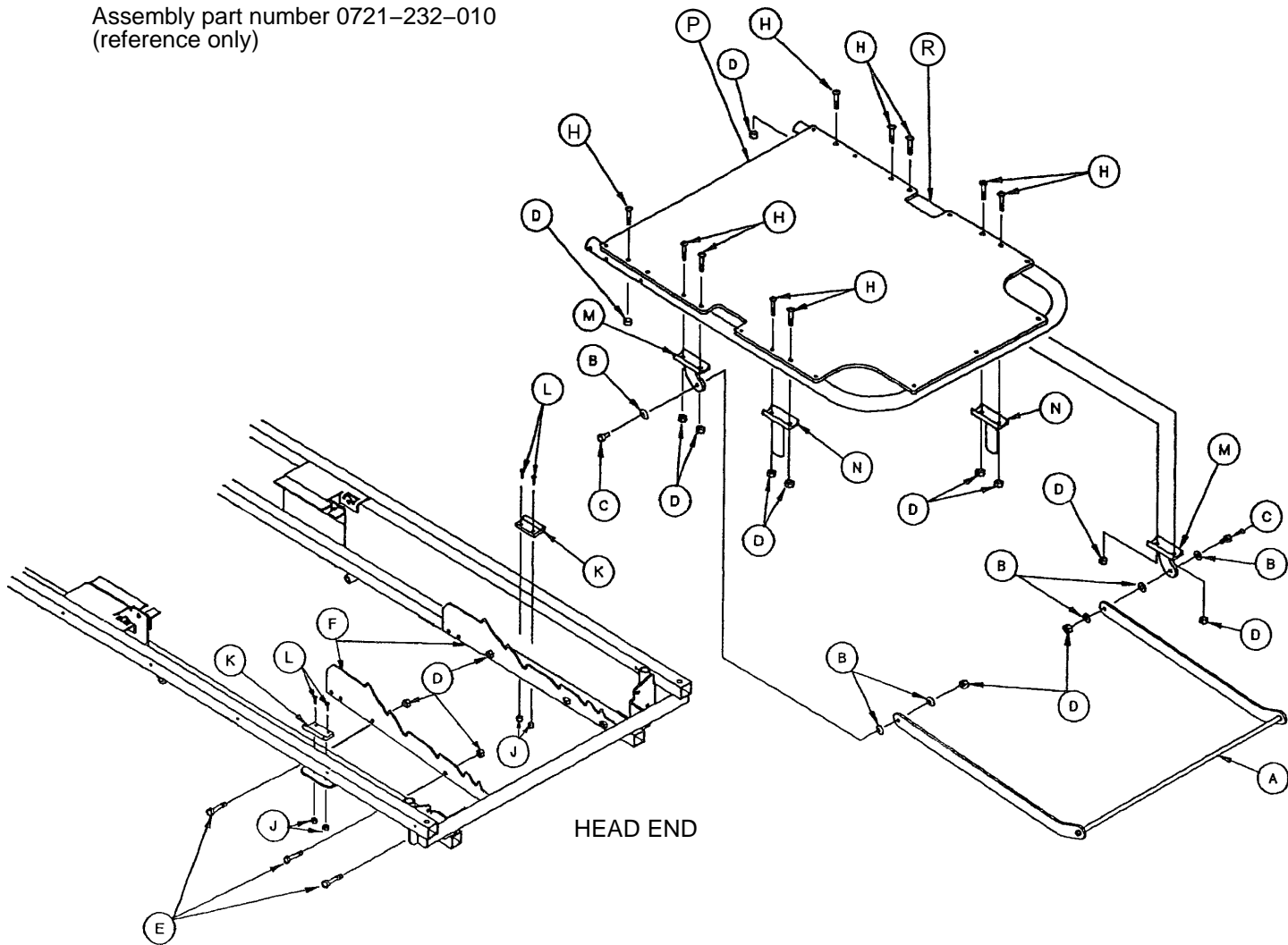
---

Item	Part No.	Part Name	Qty.	Item	Part No.	Part Name	Qty.
A	0721-201-020	Frame Assembly	1	AW	0720-201-021	Riser Stop	2
B	0028-072-000	Retaining Ring	2	AZ	1001-034-025	End Plug	2
C	1001-040-012	Foot Board Receptacle	2	BA	0014-002-000	Flat Washer	6
D	0023-104-000	Self-Tapping Screw	8	BB	0003-047-000	Hex Hd. Cap Screw	10
E	0926-400-142	Corner Wheel	4	BC	0027-004-000	Cotter Pin	4
F	1010-201-027	Bumper Extrusion	2	BE	0003-078-000	Hex Hd. Cap Screw	4
H	1001-001-036	End Plug	2	BF	0025-079-000	Pop Rivet	8
L	0016-028-000	Nylock Hex Nut	16	BH	(page 36)	Siderail Ass'y, Left	1
M	0016-036-000	Stover Lock Nut	2	BJ	(page 36)	Siderail Ass'y, Right	1
N	0016-035-000	Stover Lock Nut	4	BK	1010-026-069	Lock Support	2
P	0025-038-000	Pop Rivet	20	BL	0721-026-066	Pivot Screw	14
R	0004-201-000	Soc. Hd. Cap Screw	4	BM	0721-026-069	Upright Sleeve	4
S	0011-179-000	Nylon Flat Washer	2	BN	0004-136-000	But. Hd. Cap Screw	14
W	0004-103-000	Fowler Pivot Bolt	2	BP	0004-135-000	But. Hd. Cap Screw	4
Z	0014-021-000	Washer	18	BR	0038-220-000	Compression Spring	2
AB	1010-201-238	Corner Cover, Slot Only	2	BS	0721-026-068	Upright Cradle	6
AC	1010-201-239	Corner Cover, Hole Only	2	BT	1010-026-081	Lock Housing Ass'y, Lt.	1
AD	0037-010-000	Hole Plug	2	BW	1010-026-080	Lock Housing Ass'y, Rt.	1
AE	0025-122-000	Pop Rivet	36	BZ	0037-074-000	Hole Plug	6
AF	0037-059-000	Hole Plug	2	CA	0721-026-074	Lock Handle, Machined	2
AJ	(page 26)	Siderail Bumper	2	CB	0021-104-000	Set Screw	2
AK	0720-201-126	Foot Section Skin	1	CC	0011-002-000	Flat Washer	4
AL	0720-201-027	Midsection Skin	1	CD	0004-131-000	But. Hd. Cap Screw	1
AM	0720-201-122	Foot Section Tube Ass'y	1	CE	0015-004-000	Hex Nut	1
AN	0720-201-020	Gatch Riser	1	CF	0037-011-000	Neoprene Cap	1
AP	0720-201-023	Midsection Support	1	CH	0721-031-065	Litter Hole Plug (not shown)	4
AR	1001-034-024	Thigh Support	2	CJ	1210-800-008	Patent Label	1
AS	1001-034-029	Slider Support Ass'y, Lt.	1	CK	7900-001-102	Velcro Pile	24"
AT	1001-034-030	Slider Support Ass'y, Rt.	1				



# Manual Fowler Assembly

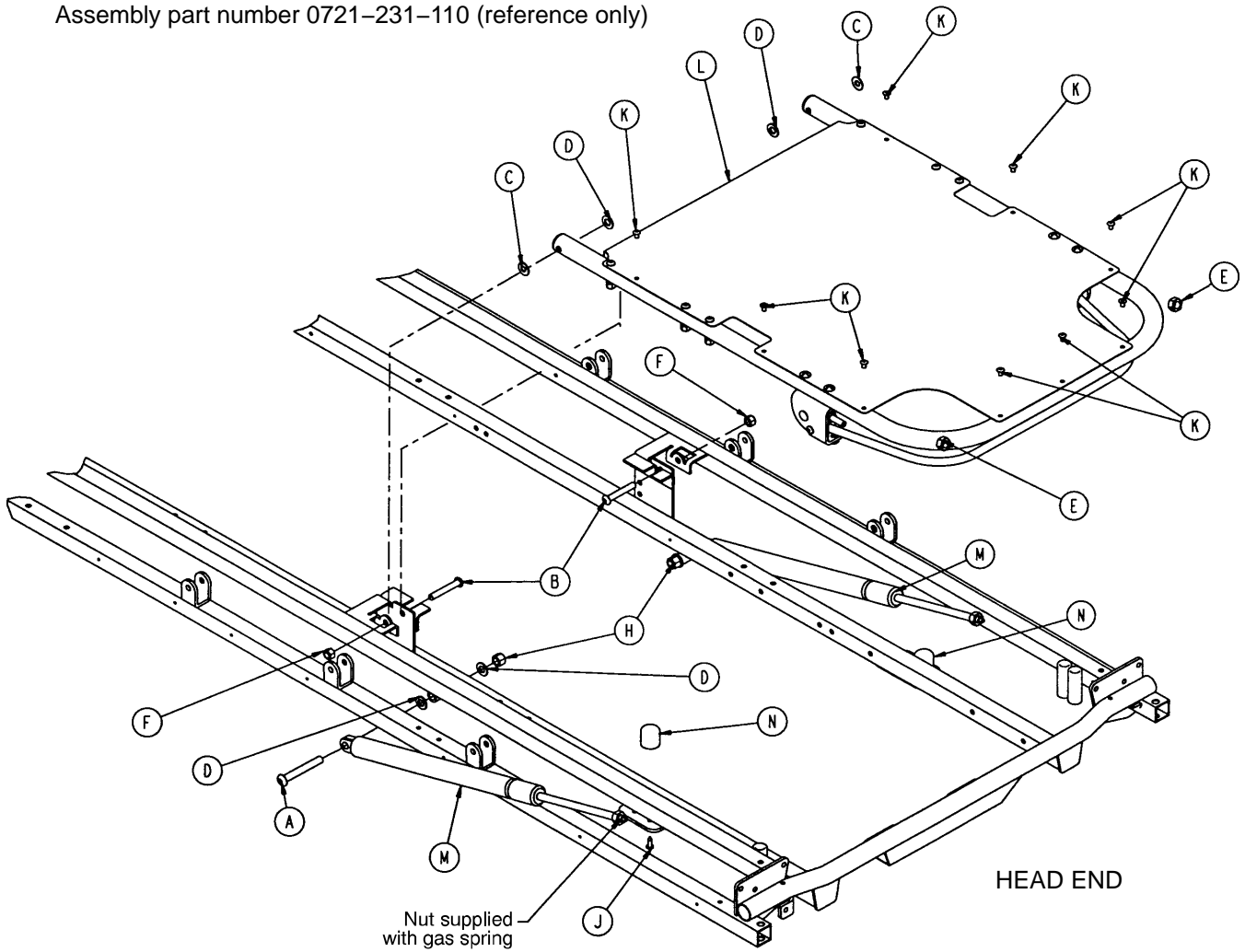
Assembly part number 0721-232-010  
(reference only)



Item	Part No.	Part Name	Qty.
A	0721-232-019	Brace Assembly	1
B	0014-002-000	Nylon Flat Washer	6
C	0003-357-000	Hex Hd. Cap Screw	2
D	0016-118-000	Nylock Hex Nut	18
E	0003-355-000	Hex Hd. Cap Screw	6
F	1001-032-022	Position Bar Rest	2
H	0004-135-000	But. Hd. Cap Screw	10
J	0016-003-000	Lock Nut	4
K	1001-032-026	Manual Fowler Rest	2
L	0004-169-000	But. Hd. Cap Screw	4
M	1001-032-023	Tab Assembly	2
N	1001-032-028	Riser Assembly	2
P	0721-231-012	Fowler Skin	1
R	0721-231-013	Fowler Tube	1

# Pneumatic Fowler Assembly

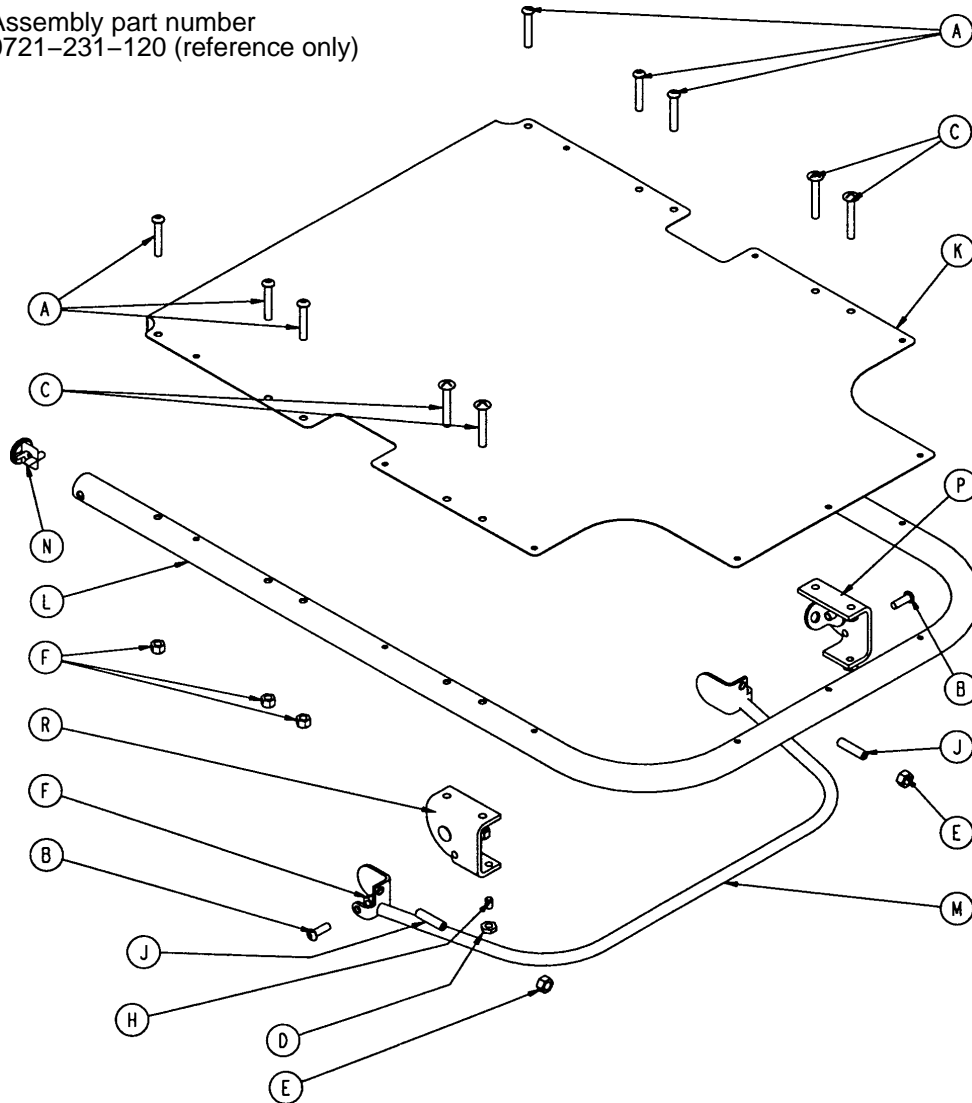
Assembly part number 0721-231-110 (reference only)



Item	Part No.	Part Name	Qty.
A	0004-182-000	Hex Soc. But. Hd. Cap Screw	2
B	0004-183-000	Hex Soc. But. Hd. Cap Screw	2
C	0011-179-000	Washer	2
D	0014-021-000	Washer	8
E	0015-060-000	Hex Jam Nut	2
F	0016-116-000	Hex Nut	2
H	0016-117-000	Hex Nut	2
J	0023-256-000	Self-Tapping Screw	2
K	0025-122-000	Blind Rivet	9
L	(page 34)	Pneumatic Fowler Assembly	1
M	1010-031-078	Gas Cylinder	2
N	1211-031-031	Pneumatic Fowler Rest	2

# Pneumatic Fowler Assembly

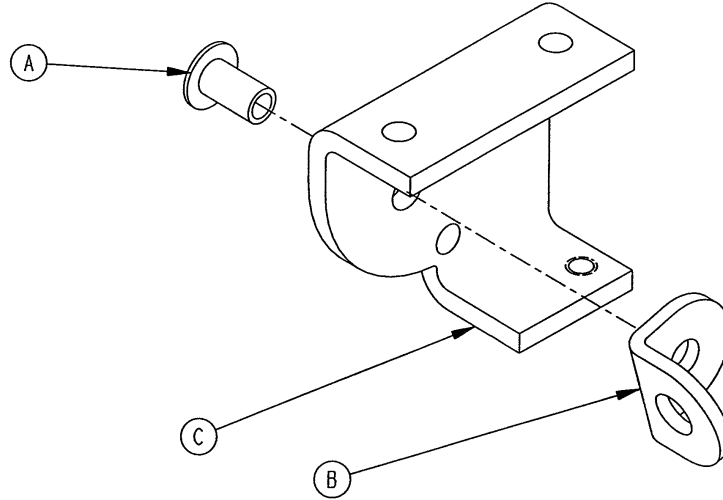
Assembly part number  
0721-231-120 (reference only)



Item	Part No.	Part Name	Qty.
A	0004-135-000	But Hd. Cap Screw	6
B	0004-161-000	Hex Soc. But. Hd. Cap Screw	2
C	0007-071-000	Truss Hd. Mach. Screw	4
D	0015-037-000	Jam Nut	2
E	0015-050-000	Hex Nut	2
F	0016-118-000	Stover Lock Nut	12
H	0021-125-000	Set Screw	2
J	0021-126-000	Set Screw	2
K	0721-231-012	Fowler Skin	1
L	0721-231-013	Fowler Tube	1
M	0721-231-118	Trip Bar Assembly	1
N	1001-001-036	Hole Plug	2
P	<a href="#">(page 35)</a>	Outer Housing Ass'y, Right	1
R	<a href="#">(page 35)</a>	Outer Housing Ass'y, Left	1

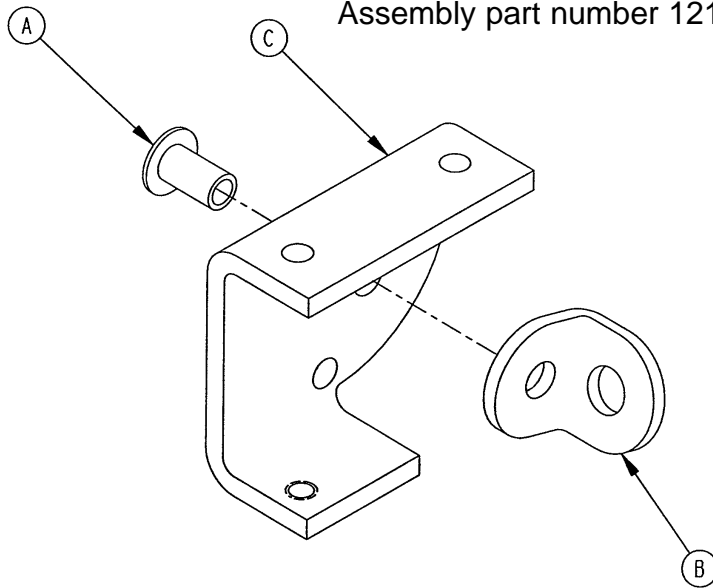
# Pneumatic Fowler Outer Housing Assembly

Assembly part number 1210-031-106 (Right)



Item	Part No.	Part Name	Qty.
A	0025-144-000	Semi-Tubular Rivet	1
B	1210-031-103	Pivot Tab	1
C	1210-031-104	Outer Housing, Right	1

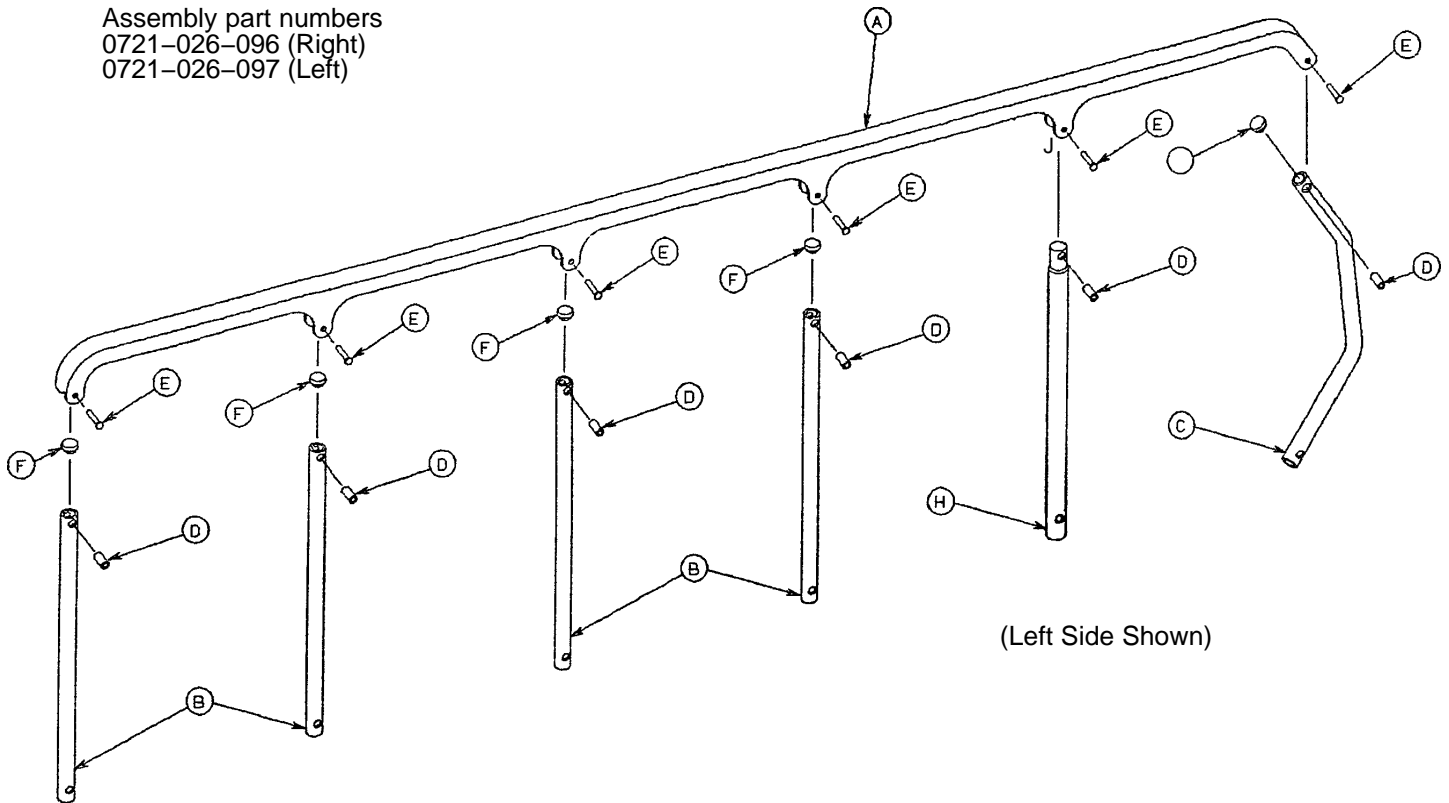
Assembly part number 1210-031-107 (Left)



Item	Part No.	Part Name	Qty.
A	0025-144-000	Semi-Tubular Rivet	1
B	1210-031-103	Pivot Tab	1
C	1210-031-105	Outer Housing, Left	1

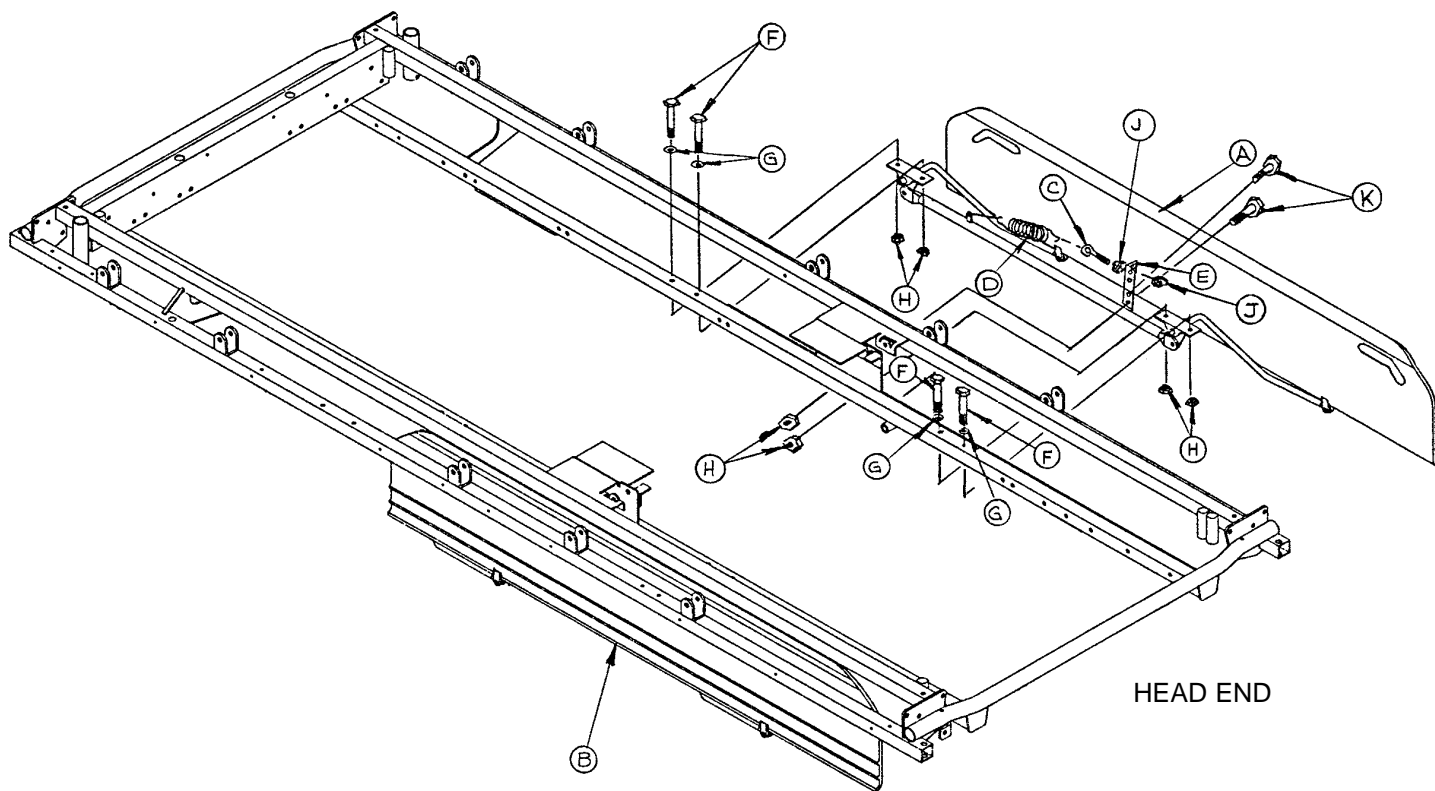
# Siderail Assembly, Right & Left

Assembly part numbers  
 0721-026-096 (Right)  
 0721-026-097 (Left)



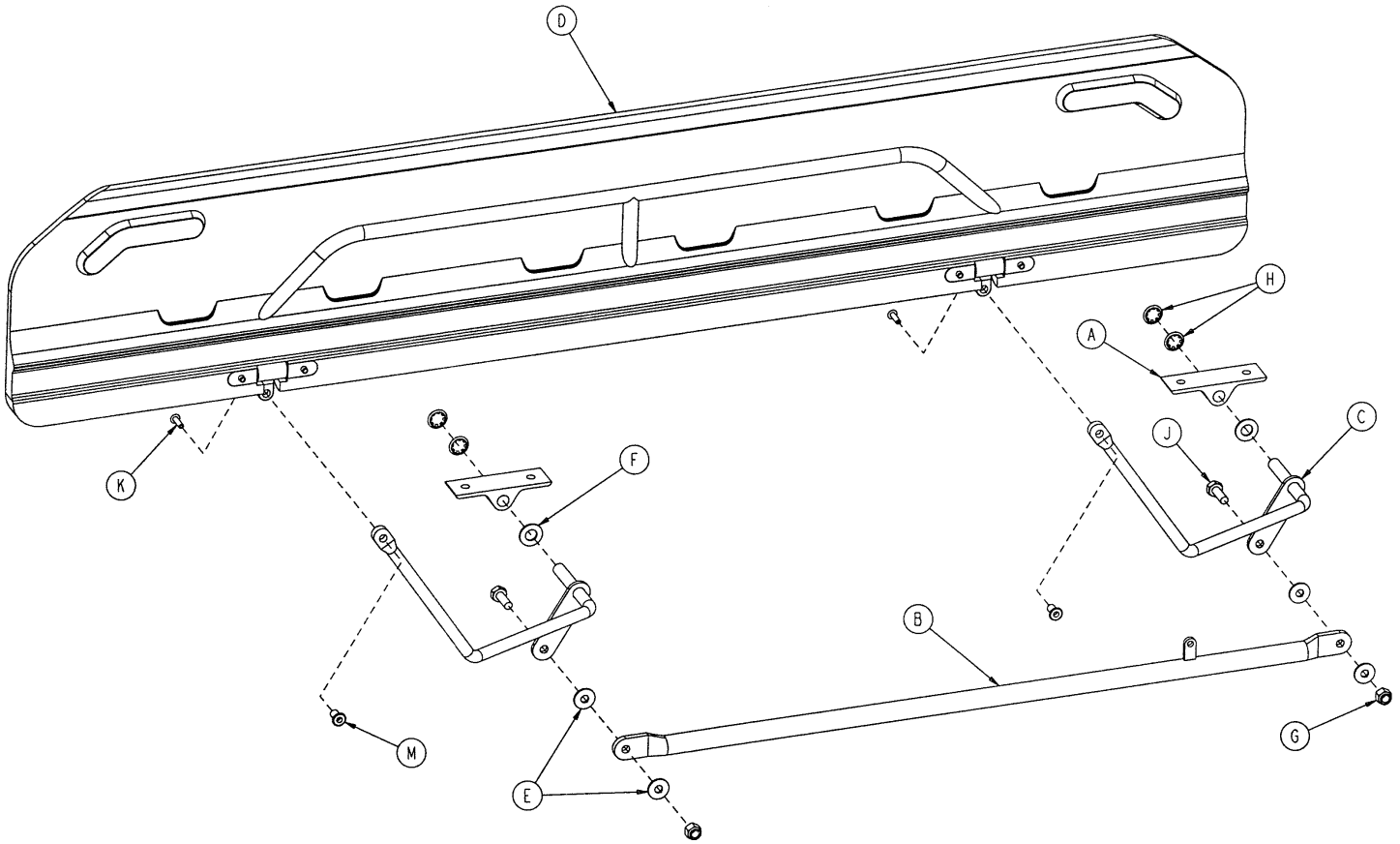
Item	Part No.	Part Name	Qty.
A	1010-026-015	Top Rail	1
B	1010-026-083	Upright	4
C	1010-026-084	Upright, Bent	1
D	1010-026-082	Spacer	6
E	0025-106-000	Semi-Tubular Rivet	6
F	1010-026-010	Round Hole Plug	4
H	1010-026-085	Upright, Latch	1
J	1010-026-012	Bent Spindle Stop	1

# 0721-239-010 Optional Short Transfer System Assembly



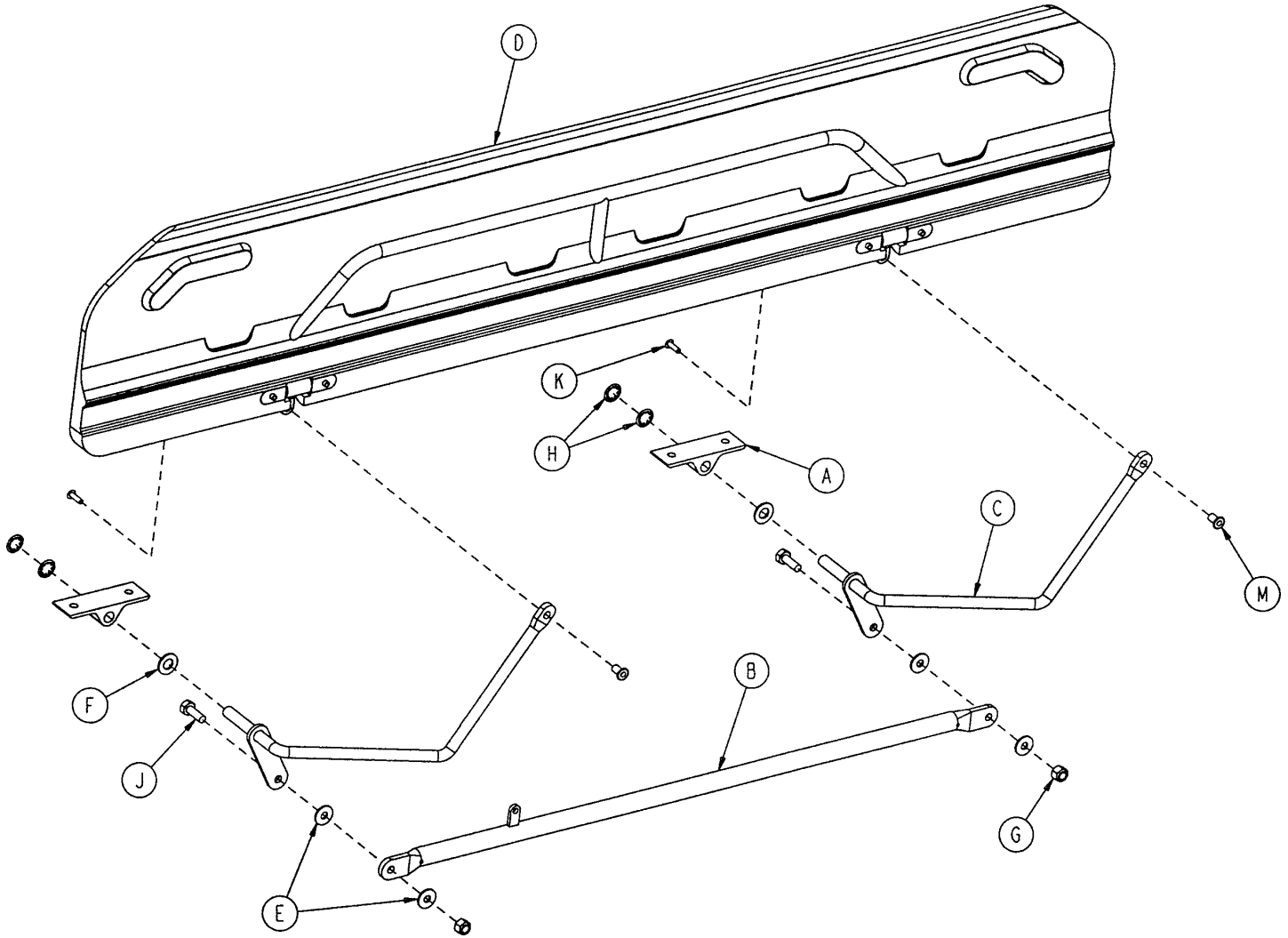
Item	Part No.	Part Name	Qty.
A	(page 38)	Transfer System Ass'y, Rt.	1
B	(page 39)	Transfer System Ass'y, Lt.	1
C	0010-011-000	Eye Bolt	2
D	0038-218-000	Tension Spring	2
E	1010-224-025	Spring Retainer	2
F	0003-359-000	Hex Hd. Cap Screw	8
G	0011-180-000	Flat Washer	8
H	0016-118-000	Nylock Hex Nut	12
J	0015-021-000	Jam Nut	4
K	0003-356-000	Hex Hd. Cap Screw	4

# 1010-232-010 Short Transfer Board Assembly, Right



Item	Part No.	Part Name	Qty.
A	1010-032-098	Pivot	2
B	1010-224-033	Connecting Link Ass'y, Rt.	1
C	1010-232-016	Pivot Arm Ass'y, Right	2
D	1020-032-100	Transfer Board Ass'y	1
E	0011-224-000	Nylon Flat Washer	4
F	0014-021-000	Nylon Flat Washer	2
G	0016-118-000	Nylock Hex Nut	2
H	0028-093-000	Retaining Ring	4
J	0003-356-000	Hex Hd. Cap Screw	2
K	0025-157-000	Blind Rivet	2
L	0721-024-046	Label	1
M	1211-132-025	Pivot Sleeve	2

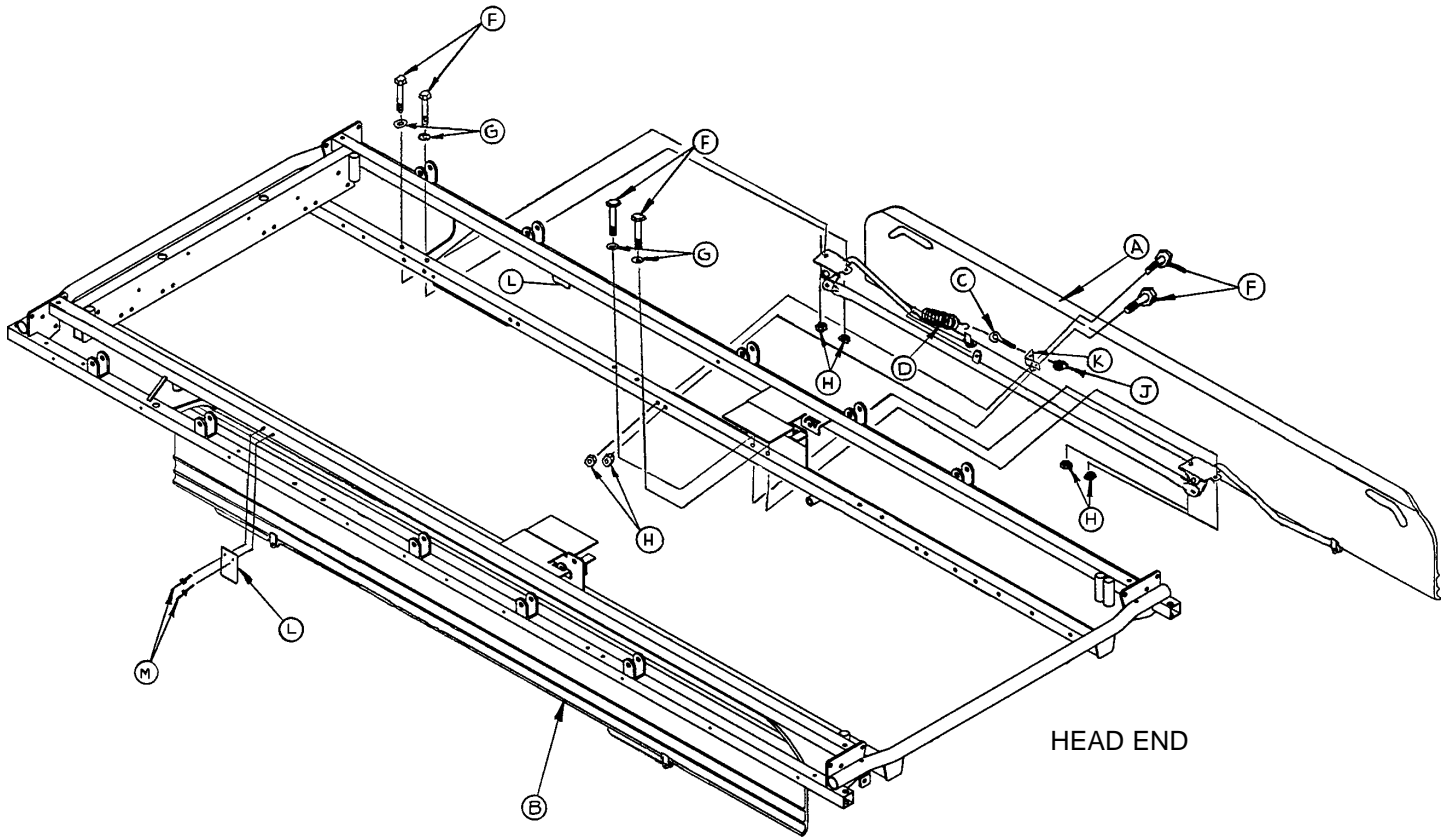
# 1010-232-011 Short Transfer Board Assembly, Left



Item	Part No.	Part Name	Qty.
A	1010-032-098	Pivot	2
B	1010-224-033	Connecting Link Ass'y	1
C	1010-232-017	Pivot Arm Ass'y, Lt.	2
D	1020-032-100	Transfer Board Ass'y	1
E	0011-224-000	Nylon Flat Washer	4
F	0014-021-000	Nylon Flat Washer	2
G	0016-118-000	Nylock Hex Nut	2
H	0028-093-000	Retaining Ring	4
J	0003-356-000	Hex Hd. Cap Screw	2
K	0025-157-000	Blind Rivet	2
L	0721-024-046	Label	1
M	1211-132-025	Pivot Sleeve	2

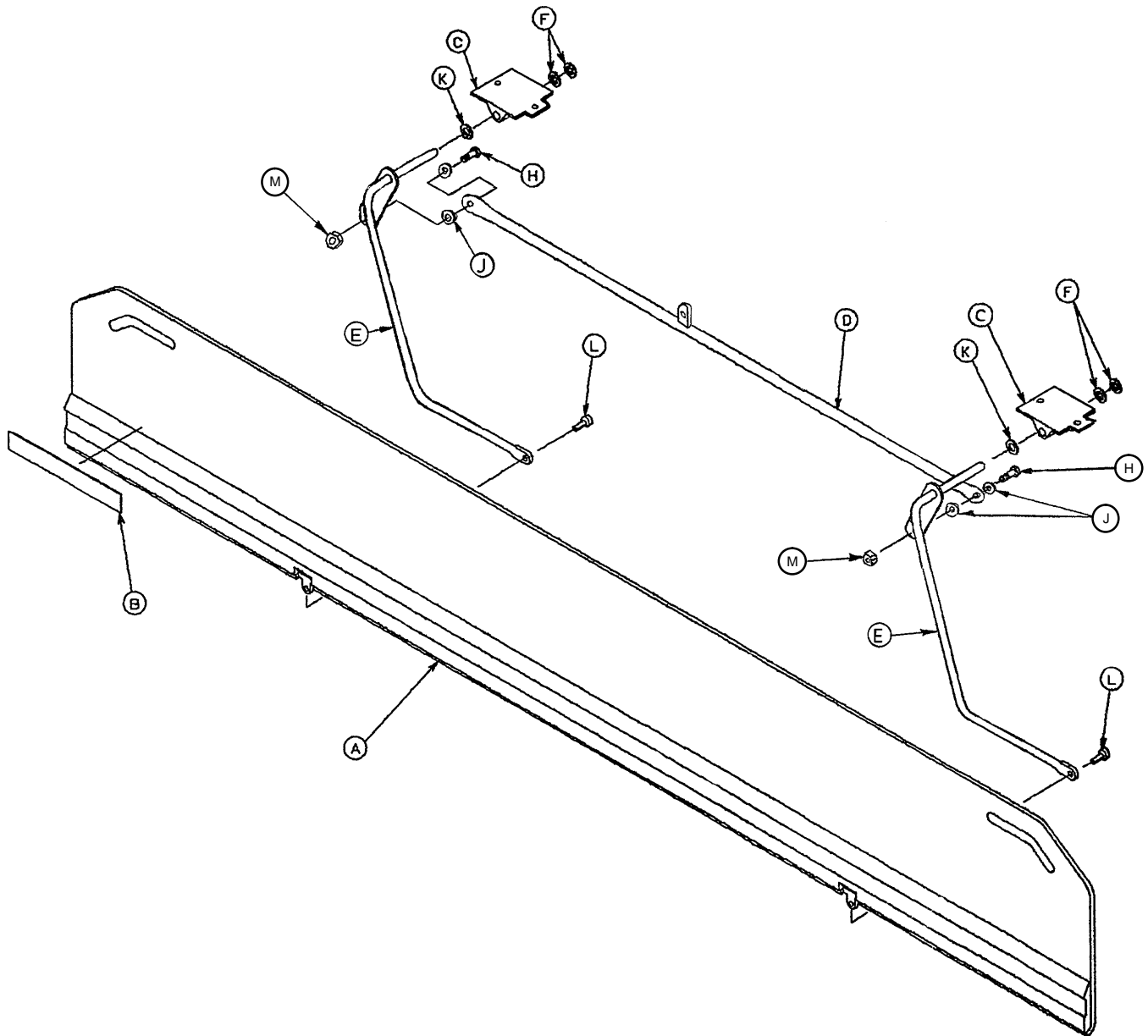


# 0721-234-010 Optional Long Transfer System Assembly



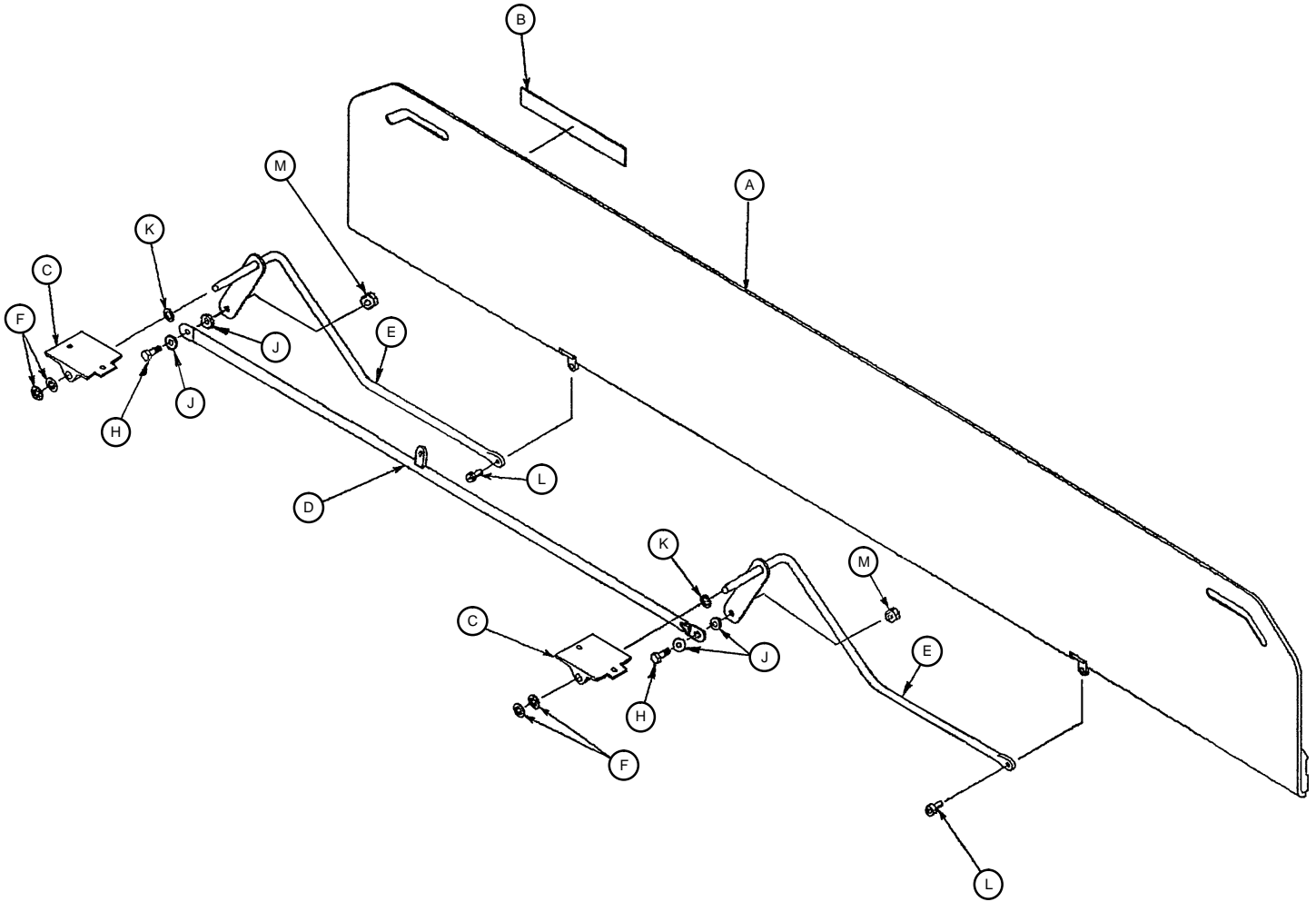
Item	Part No.	Part Name	Qty.
A	(page 42)	Transfer System Ass'y, Rt.	1
B	(page 41)	Transfer System Ass'y, Lt.	1
C	0010-011-000	Eye Bolt	2
D	0038-218-000	Tension Spring	2
E	0721-224-025	Spring Retainer, Rt.	1
F	0003-359-000	Hex Hd. Cap Screw	12
G	0011-180-000	Flat Washer	8
H	0016-118-000	Nylock Hex Nut	12
J	0015-021-000	Jam Nut	2
K	0721-224-024	Spring Retainer, Lt.	1
L	0721-024-061	Pivot Arm Rest	2
M	0025-179-000	Pop Rivet	4
N	0721-201-017	Riser Tube (not shown)	2

# 0721-234-012 Long Transfer Board Assembly, Left



Item	Part No.	Part Name	Qty.
A	0721-024-055	Transfer Board Ass'y	1
B	0721-024-046	Label	1
C	0721-224-016	Long Pivot, Machined	2
D	0721-224-033	Connecting Link Ass'y	1
E	0721-232-017	Pivot Arm Ass'y, Lt.	2
F	0028-093-000	Retaining Ring	4
H	0003-050-000	Hex Hd. Cap Screw	2
J	0011-224-000	Nylon Flat Washer	4
K	0014-021-000	Nylon Flat Washer	2
L	0004-156-000	Soc. Hd. Cap Screw	2
M	0016-028-000	Nylock Hex Nut	2

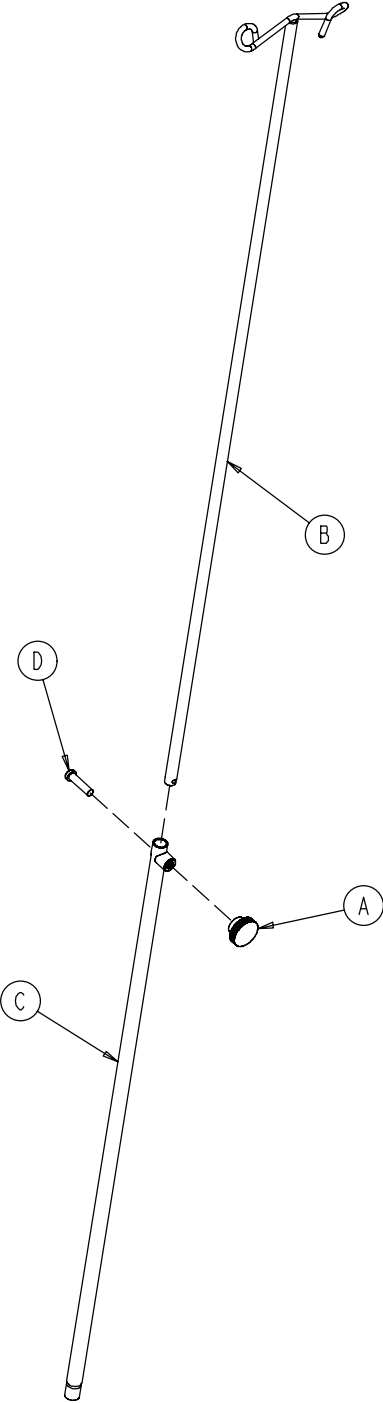
# 0721-234-013 Long Transfer Board Assembly, Right



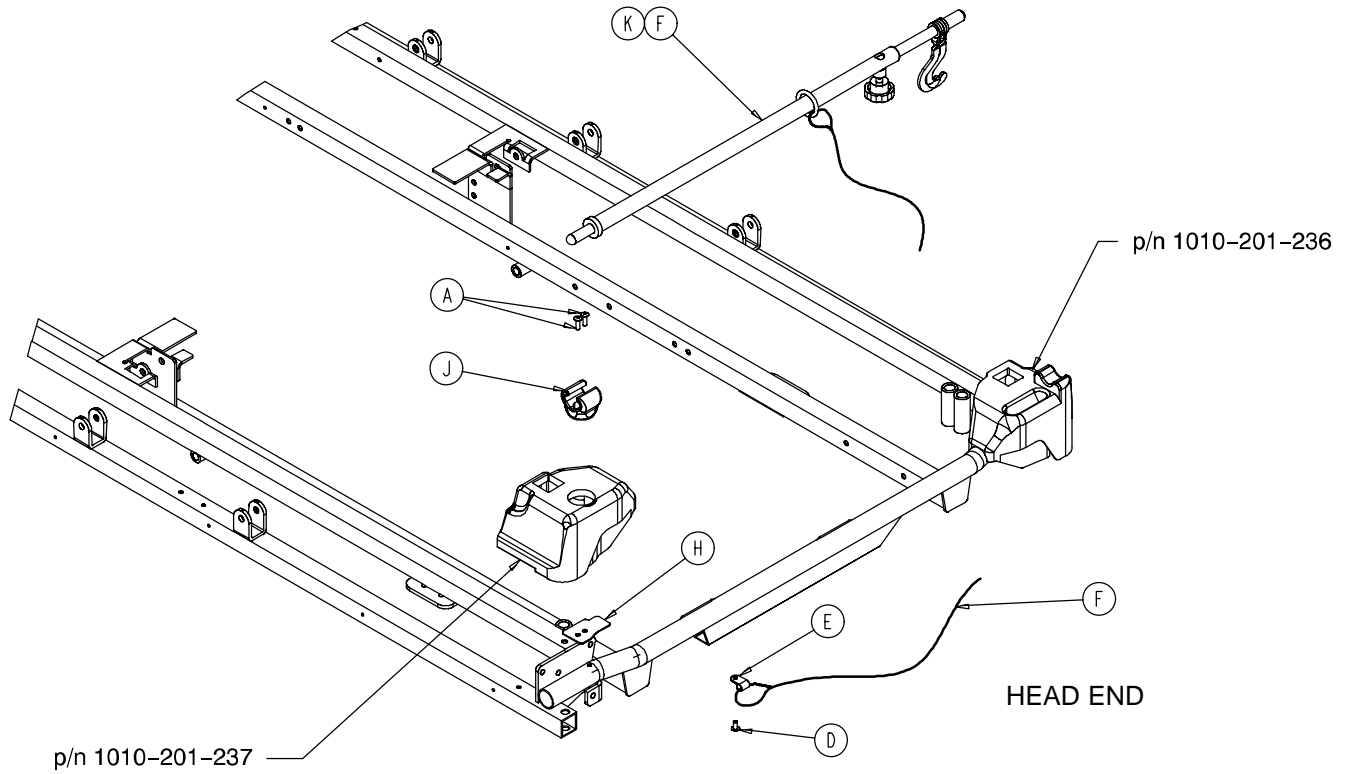
Item	Part No.	Part Name	Qty.
A	0721-024-055	Transfer Board Ass'y	1
B	0721-024-046	Label	1
C	0721-224-016	Long Pivot, Machined	2
D	0721-224-033	Connecting Link Ass'y, Rt.	1
E	0721-232-016	Pivot Arm Ass'y, Right	2
F	0028-093-000	Retaining Ring	4
H	0003-050-000	Hex Hd. Cap Screw	2
J	0011-224-000	Nylon Flat Washer	4
K	0014-021-000	Nylon Flat Washer	2
L	0004-156-000	Soc. Hd. Cap Screw	2
M	0016-028-000	Nylock Hex Nut	2

# 0390-025-000 Standard, Removable I.V. Pole Assembly

Item	Part No.	Part Name	Qty.
A	0024-023-000	Plastic Knob	1
B	0390-003-053	Double I.V. Ass'y	1
C	0393-003-043	Tube Assembly	1
D	0004-496-000	Soc. Hd. Cap Screw	1

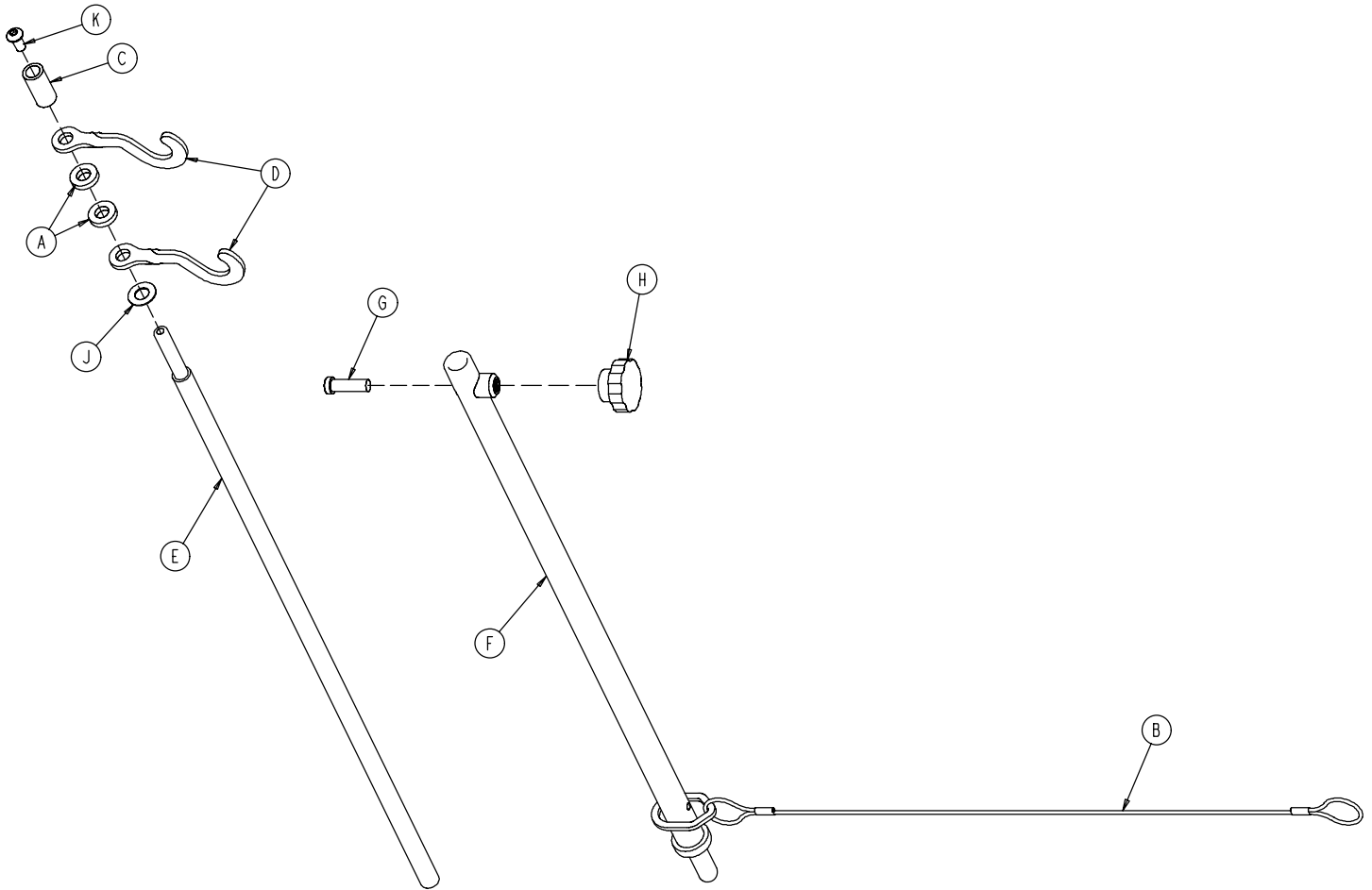


# 0721-117-000 Optional Tethered I.V. Assembly



Item	Part No.	Part Name	Qty.
A	0025-133-000	Pop Rivet	2
D	0025-171-000	Rivet	1
E	0034-022-000	Cable Clamp	1
F	1001-159-042	I.V. Plug	1
H	(page 45)	Tethered I.V. Pole Assembly	1
J	1211-117-021	Backing Plate	1
K	1211-117-022	I.V. Clip	1

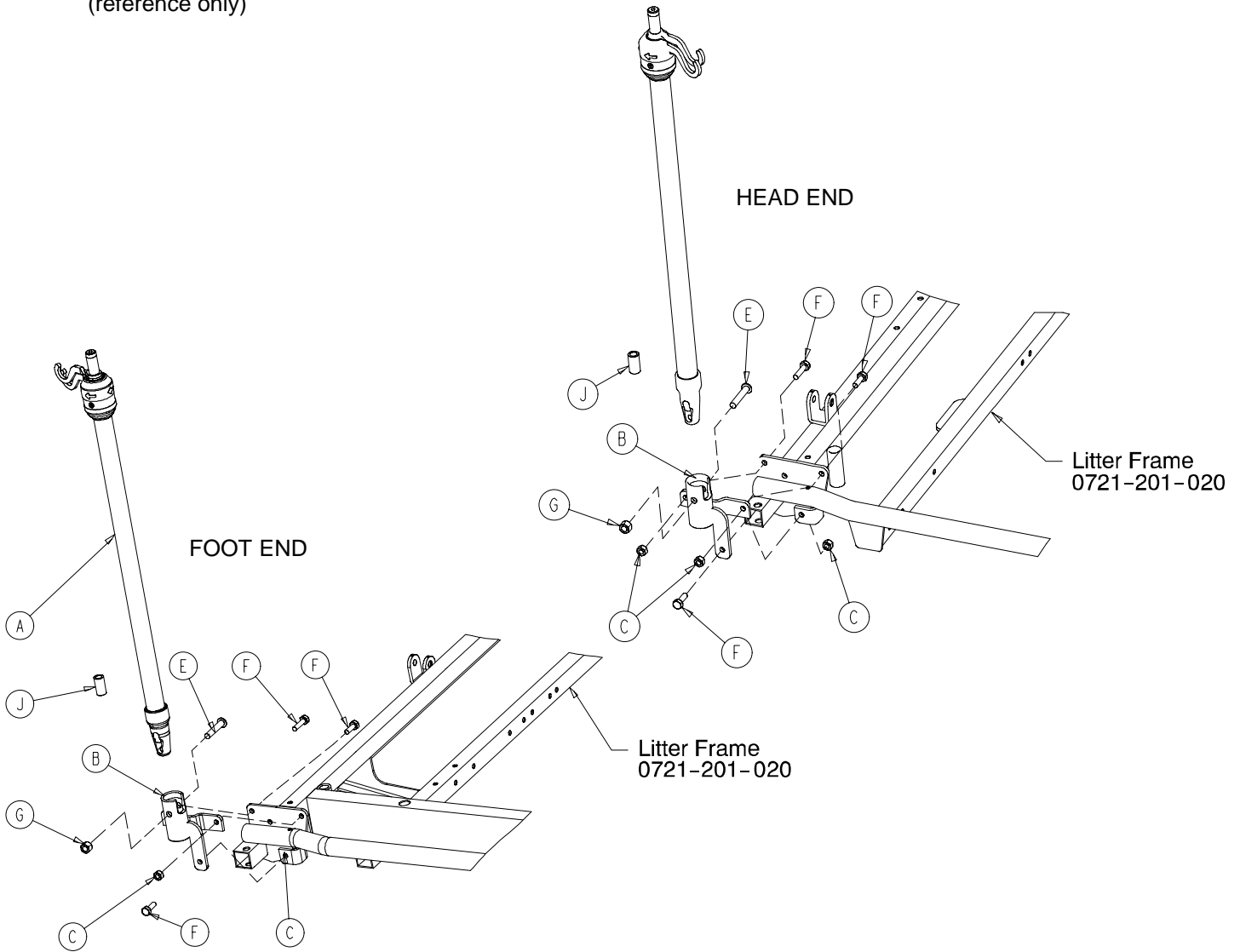
# 1211-117-010 Tethered I.V. Pole Assembly



Item	Part No.	Part Name	Qty.
A	0052-017-000	Spacer	2
B	1211-117-020	Cable Assembly	1
C	0926-400-062	Stop Sleeve	1
D	1010-059-016	I.V. Hook	2
E	1211-117-011	Extension Rod	1
F	1211-117-012	Base Tube Weldment	1
G	0004-495-000	Low Hd. Soc. Hd. Cap Screw	1
H	1211-117-016	Knob	1
J	0014-020-000	Nylon Washer	1
K	0004-232-000	Button Hd. Cap Screw	1

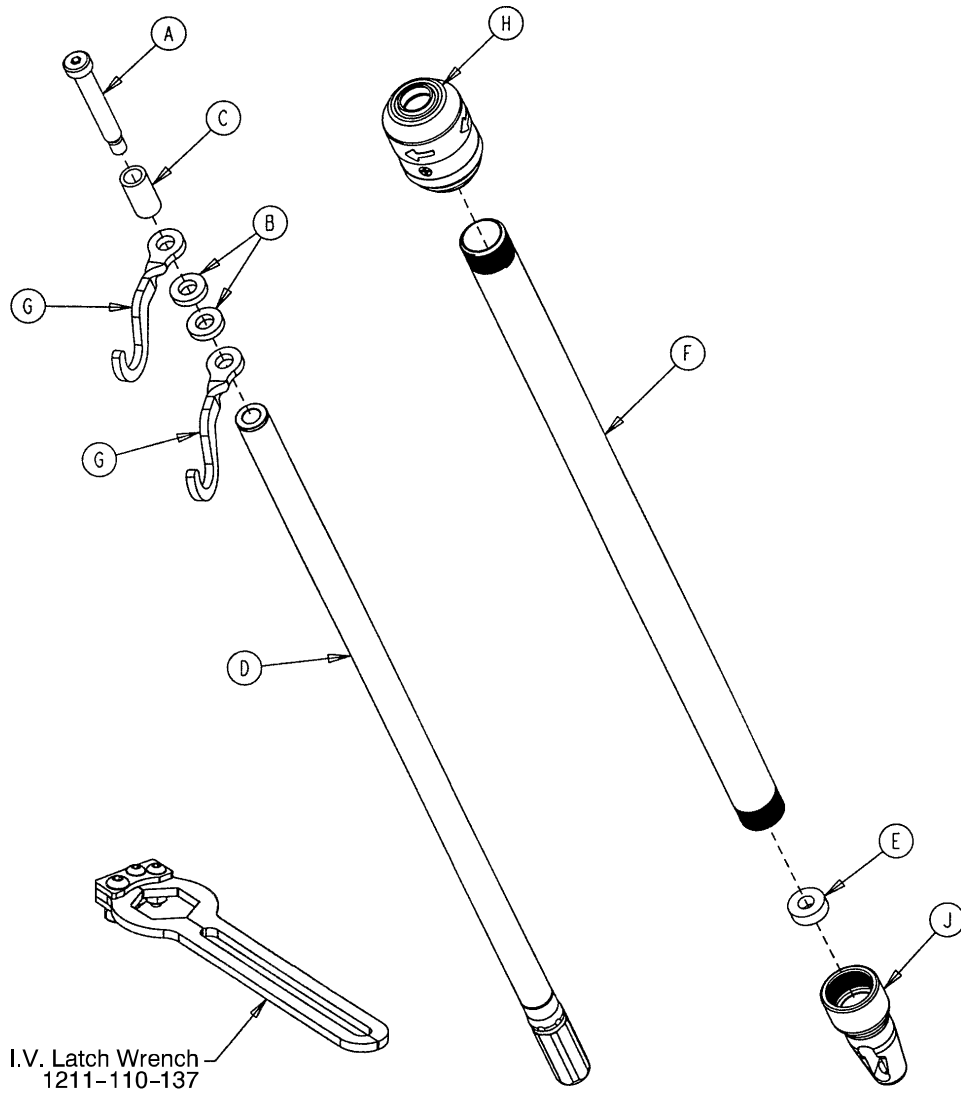
# 721-400-001 Optional 2-Stage I.V. Assembly

Assembly part number 0721-280-000 & 0721-281-000  
(reference only)



Item	Part No.	Part Name	Qty
A	(page 47)	I.V. Pole Assembly	1
B	1001-259-103	I.V. Pivot	1
C	0016-118-000	Fiberlock Nut	3
E	0004-452-000	But. Hd. Cap Screw	1
F	0003-356-000	Hex Hd. Cap Screw	3
G	0016-116-000	Flexlock Nut	1
J	1001-259-042	I.V. Plug	1

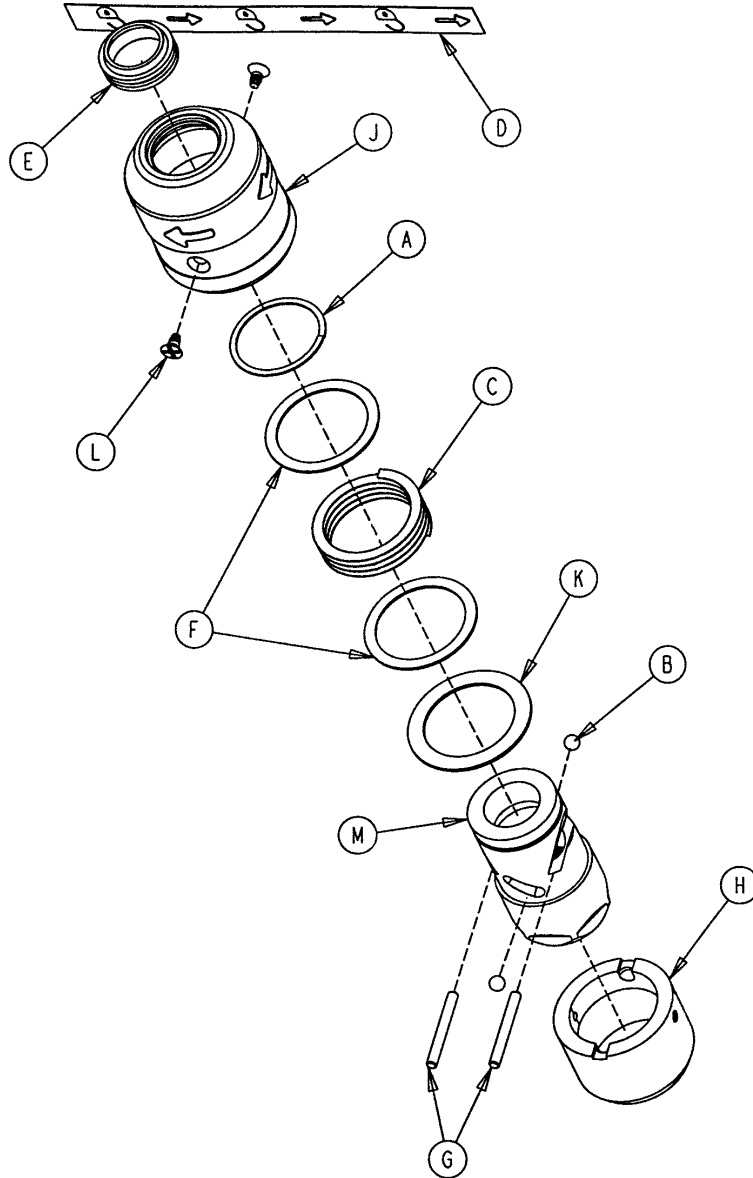
# 1211-210-010 Optional 2-Stage I.V. Pole Assembly



Item	Part No.	Part Name	Qty.
A	0008-031-000	Soc. Hd. Cap Screw	1
B	0052-017-000	Washer	2
C	0926-400-162	Spacer	1
D	1211-210-029	2nd Stage Assembly	1
E	1001-359-013	Dampener	1
F	1001-159-028	Base Tube	1
G	1010-059-016	I.V. Hook	2
H	(page 48)	I.V. Pole Latch	1
J	1001-359-112	Pivot	1



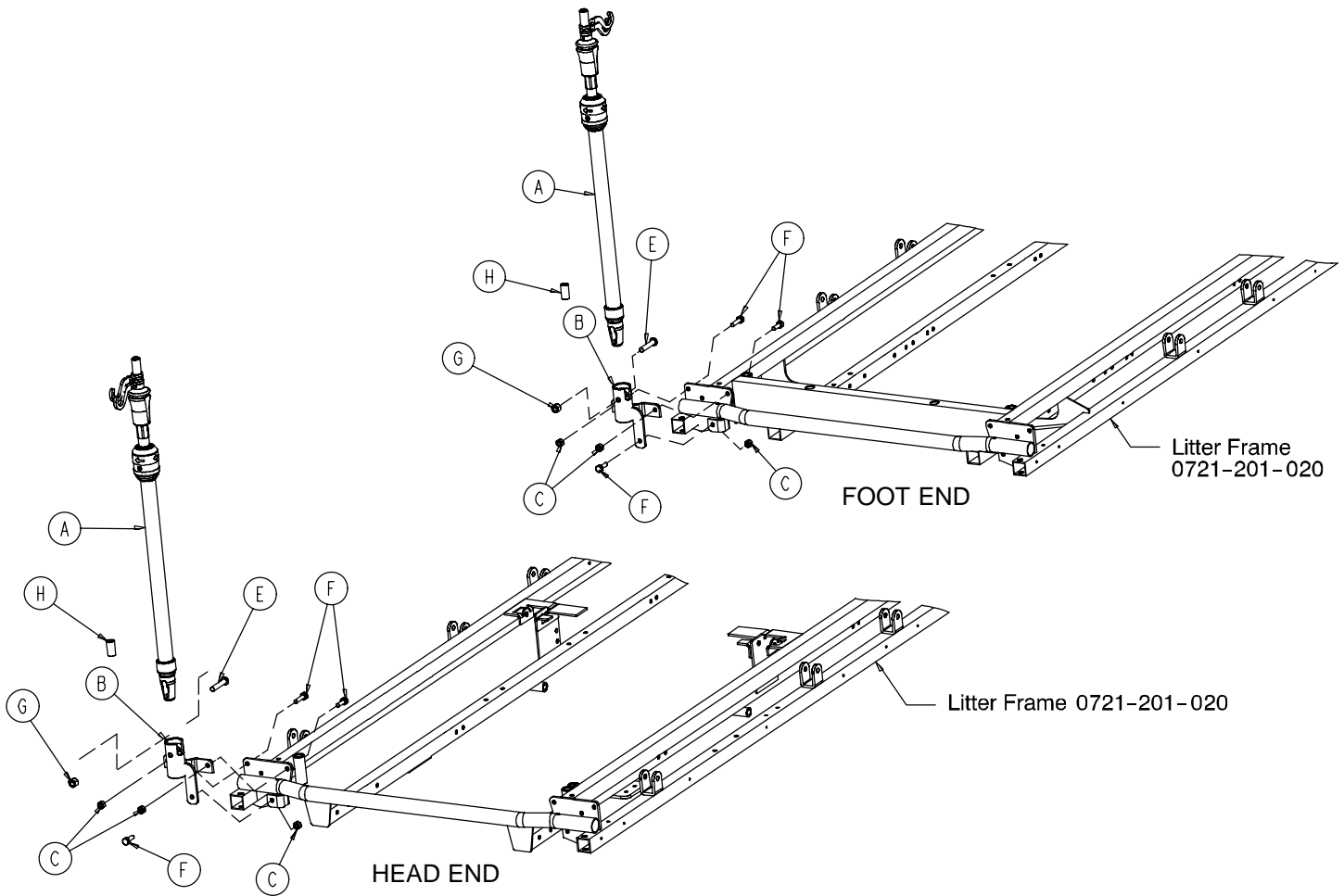
# 1211-210-026 I.V. Pole Latch Assembly



Item	Part No.	Part Name	Qty.
A	0028-167-000	Retaining Ring	1
B	0031-004-000	Steel Ball	2
C	0038-392-000	Crest-to-Crest Spring	1
D	1211-091-034	Release Label	1
E	1211-110-018	I.V. Latch Seal	1
F	1211-110-020	Washer	2
G	1211-110-021	I.V. Latch Locking Pin	2
H	1211-110-022	I.V. Latch Guide	1
J	1211-110-024	I.V. Latch O.D. Housing	1
K	1211-110-035	Washer	1
L	1211-110-036	Self-Tapping Screw	2
M	1211-210-023	I.V. Latch I.D. Housing	1

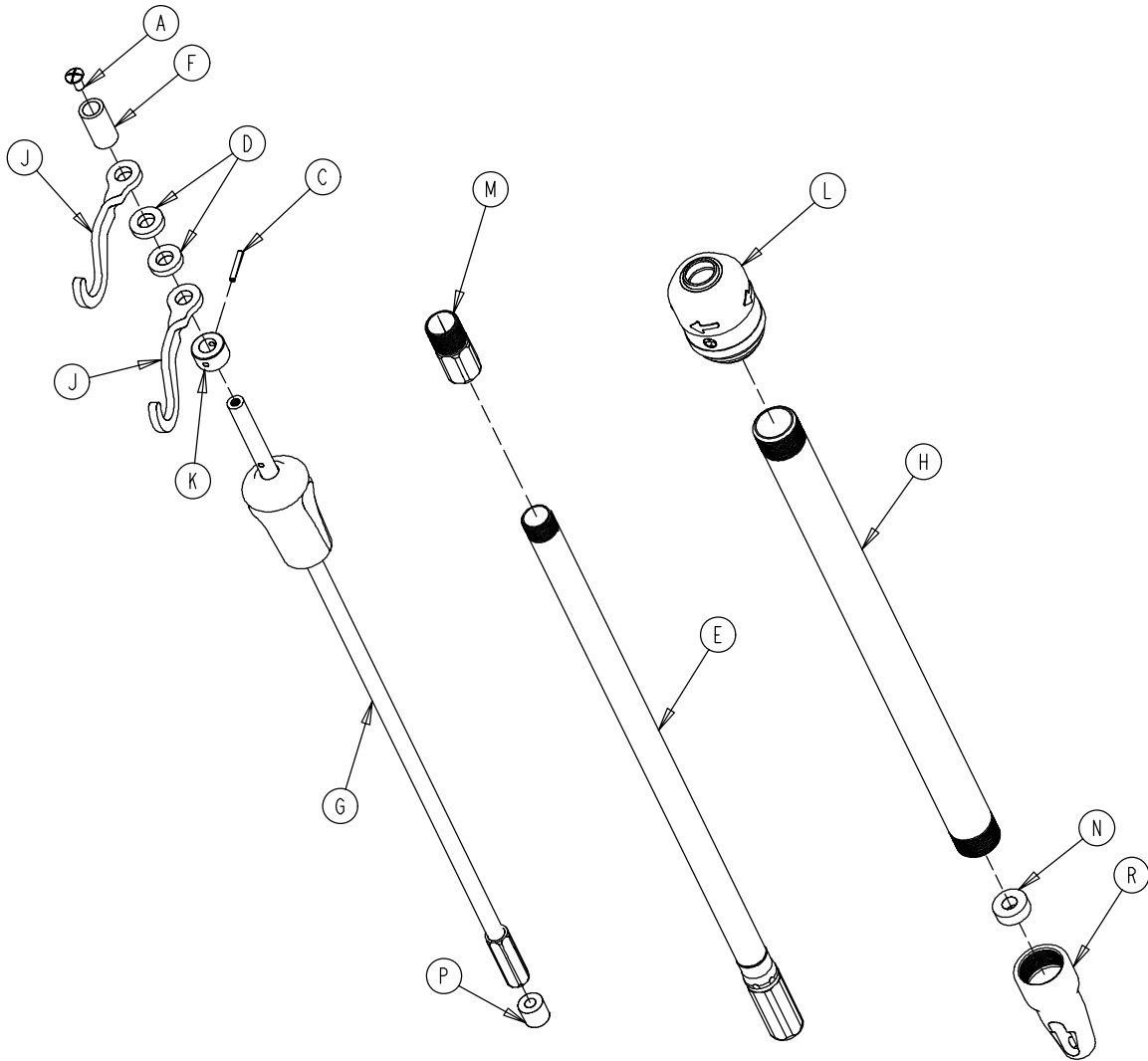
# 0721-061-000 Optional 3-Stage I.V. Assembly, Head

# 0721-062-000 Optional 3-Stage I.V. Assembly, Foot



Item	Part No.	Part Name	Qty.
A	(page 50)	I.V. Pole Assembly	1
B	1001-259-103	I.V. Pivot	1
C	0016-118-000	Fiberlock Nut	3
E	0004-452-000	But. Hd. Cap Screw	1
F	0003-356-000	Hex Hd. Cap Screw	3
G	0016-116-000	Flexlock Nut	1
H	1001-259-042	Plug	1

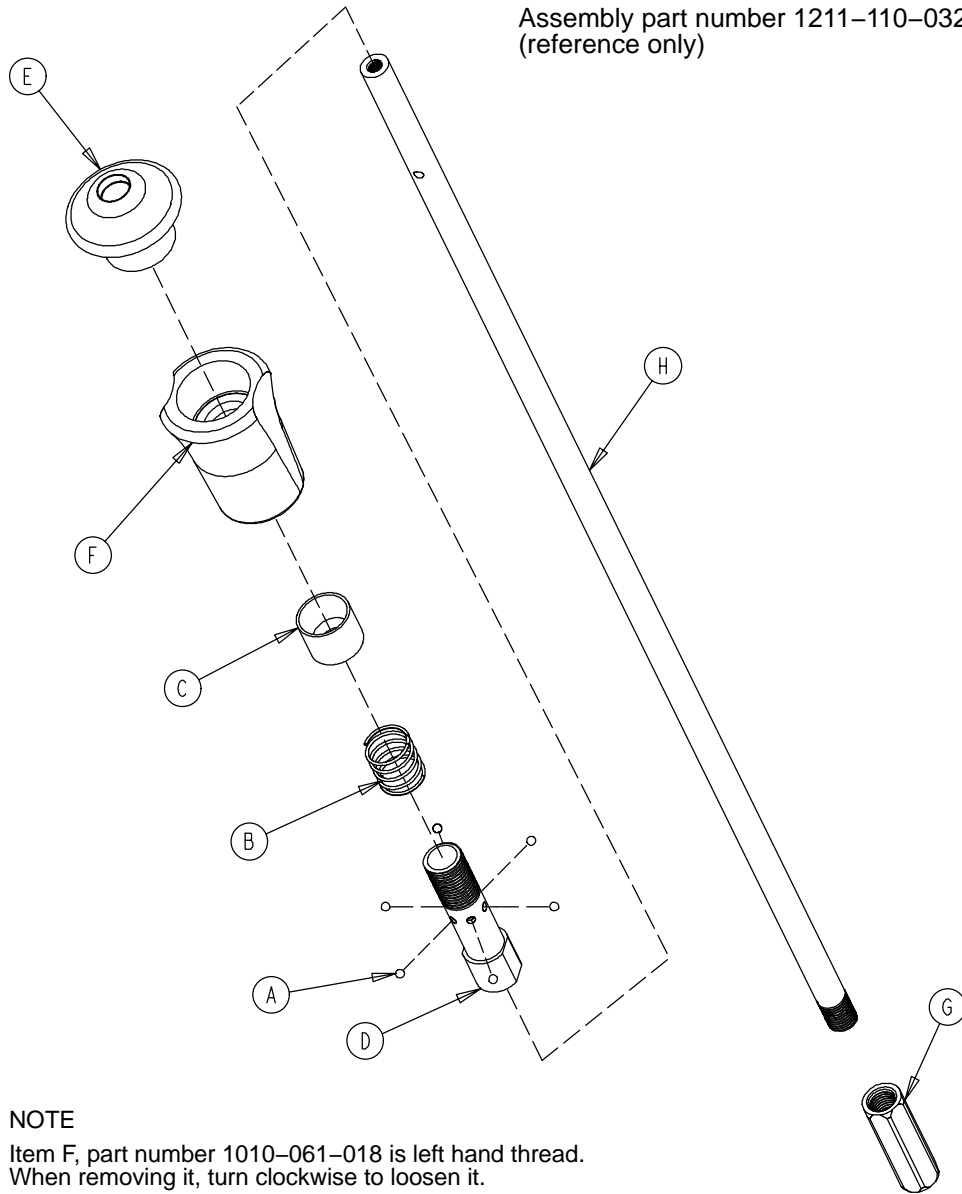
# 1211-211-010 Optional 3-Stage I.V. Pole Assembly



Item	Part No.	Part Name	Qty.
A	0007-004-000	Truss Hd. Machine Screw	1
C	0026-076-000	Roll Pin	1
D	0052-017-000	Spacer	2
E	1211-210-031	2nd Stage Assembly	1
F	0926-400-162	Spacer	1
G	(page 51)	3rd Stage Assembly	1
H	1001-161-023	Base Tube	1
J	1010-059-016	I.V. Hook	2
K	1010-061-014	Collar	1
L	(page 48)	I.V. Pole Latch	1
M	1211-110-016	Threaded Adaptor	1
N	1001-359-013	Dampener	1
P	1001-359-014	Dampener	1
R	1001-359-112	Pivot	1

# 3-Stage I.V. Pole 3rd Stage Assembly

Assembly part number 1211-110-032  
(reference only)

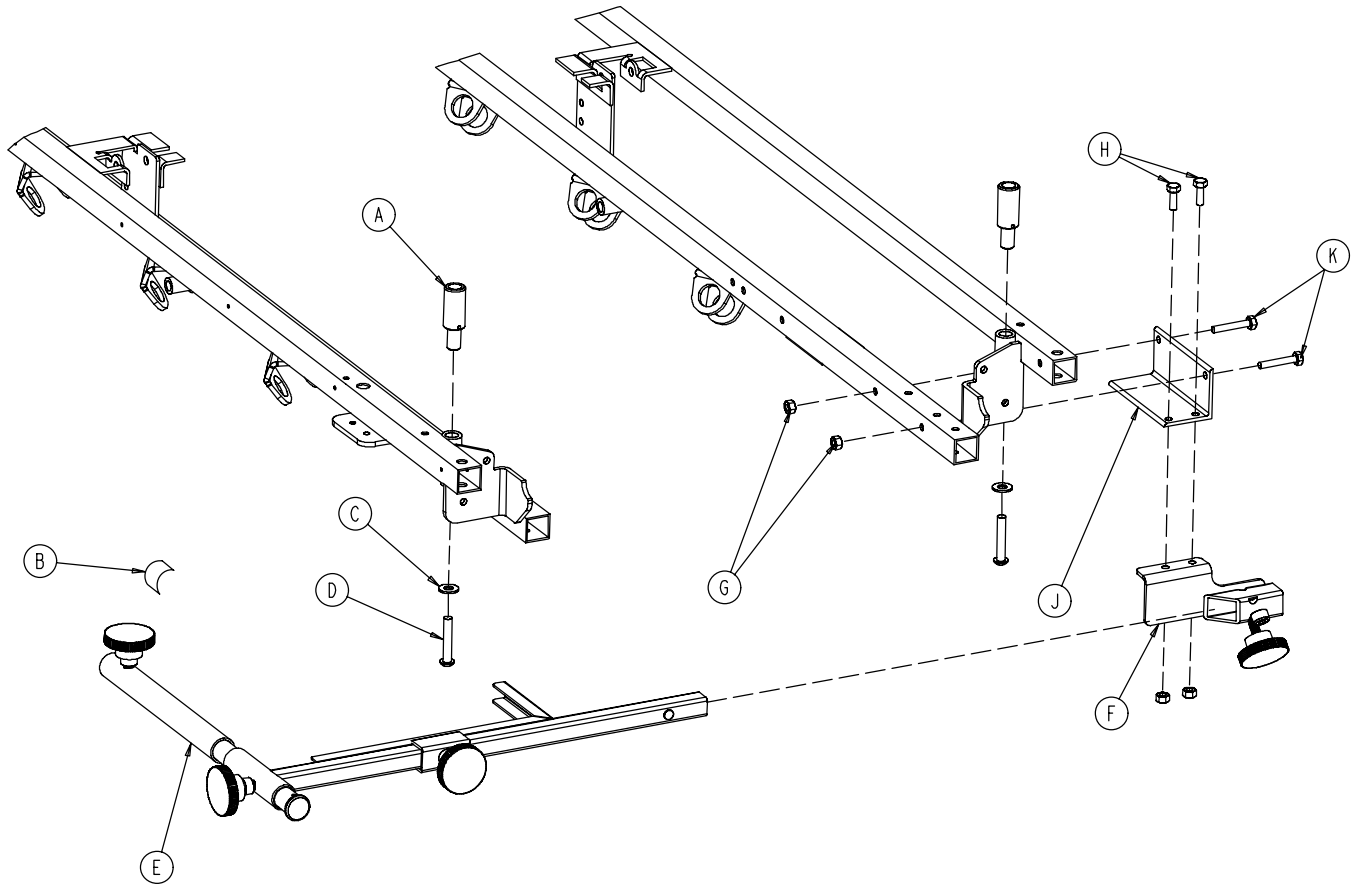


**NOTE**

Item F, part number 1010-061-018 is left hand thread.  
When removing it, turn clockwise to loosen it.

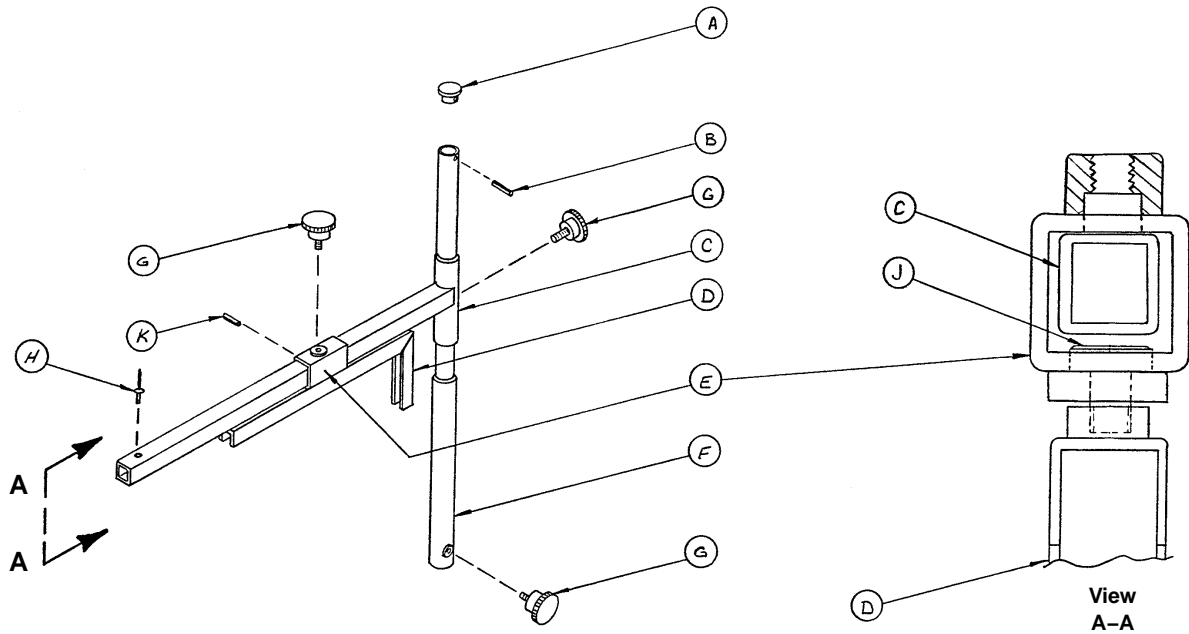
Item	Part No.	Part Name	Qty.
A	0031-021-000	Ball	6
B	0038-303-000	Compression Spring	1
C	1010-061-013	Ball Retainer	1
D	1010-061-016	Retaining Shaft	1
E	1010-061-017	Thumb Knob	1
F	1010-061-018	Hand Guard	1
G	1211-110-117	Nut	1
H	1211-110-033	3rd Extension Rod	1

# 1001-070-000 C-Spine Cassette Holder Assembly



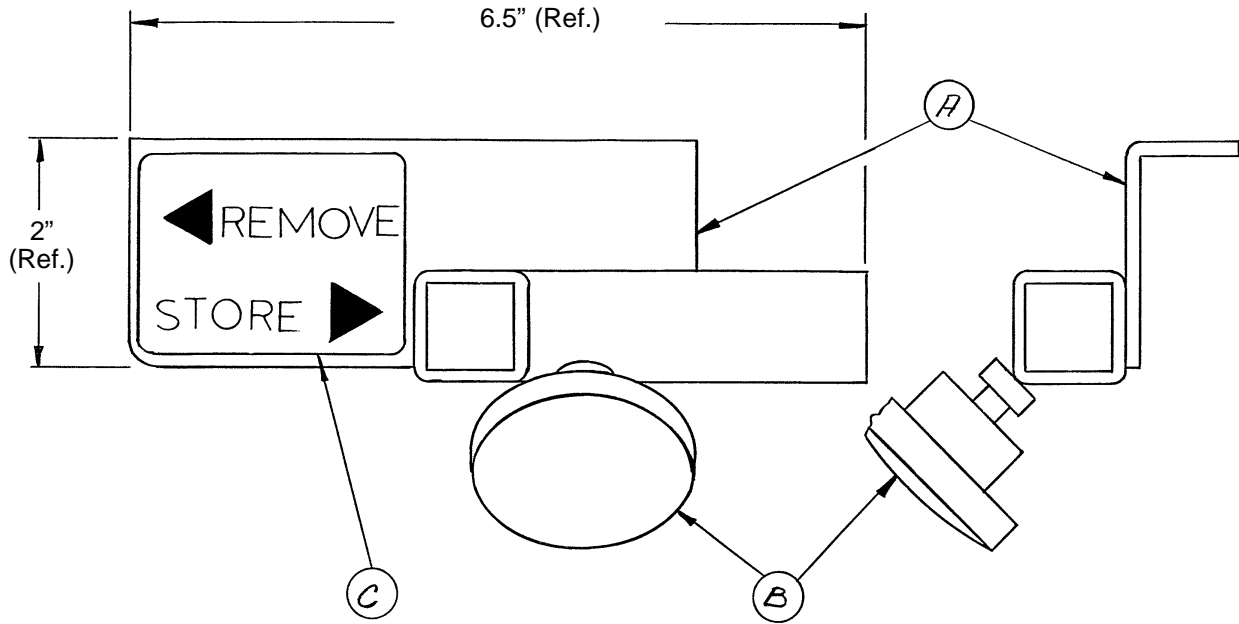
Item	Part No.	Part Name	Qty.
A	1010-070-025	I.V. Adaptor	2
B	1010-070-018	Specification Label	1
C	0011-447-000	Flat Washer	2
D	0004-054-000	But. Hd. Cap Screw	2
E	(page 53)	Support Pole Assembly	1
F	(page 54)	Storage Bracket Ass'y	1
G	0016-118-000	Nylock Nut	4
H	0003-356-000	Hex Hd. Cap Screw	2
J	1001-070-011	Attachment Bracket	1
K	0003-355-000	Hex Hd. Cap Screw	2

# 1010-070-010 C-Spine Support Pole Assembly



Item	Part No.	Part Name	Qty.
A	1010-070-033	Support Tube Cap	1
B	0026-006-000	Roll Pin	1
C	1010-070-034	Support Arm Weldment	1
D	1010-070-042	Cassette Holder Weldment	1
E	1010-070-050	Adjustment Tube Weldment	1
F	1010-070-030	Base Tube Weldment	1
G	1010-070-045	Knob	3
H	0025-055-000	Pop Rivet	1
J	1010-070-044	Pivot Pin	1
K	0026-005-000	Roll Pin	1

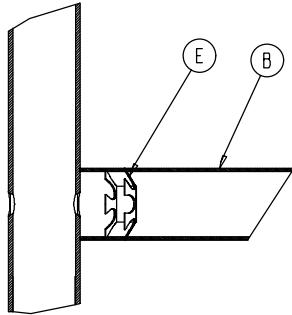
# 1010-070-019 C-Spine Storage Bracket Assembly



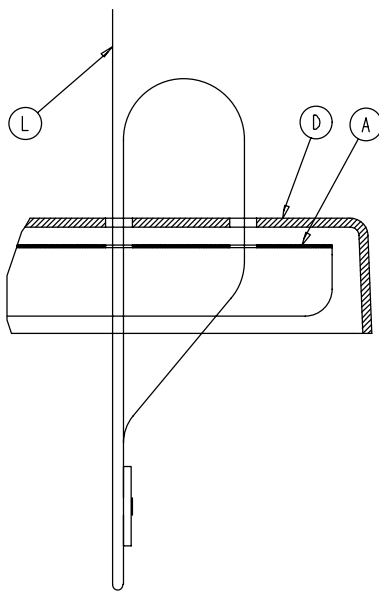
Item	Part No.	Part Name	Qty.
A	1010-070-020	Storage Bracket Weldment	1
B	1010-070-045	Knob	1
C	1010-070-023	Storage Label	1

# 0926-039-000 Optional Defibrillator Tray Assembly

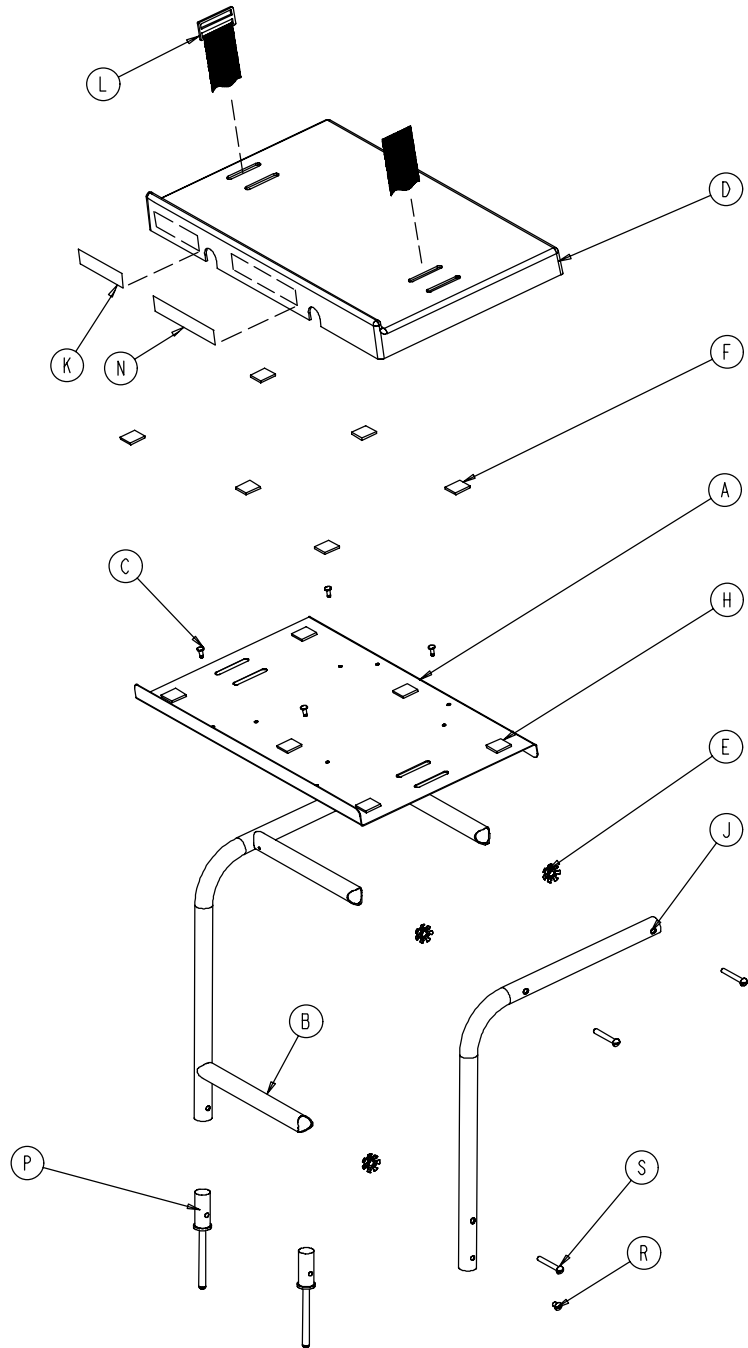
Assembly part number 0926-039-010  
(reference only)



Umbrella Nut/Crosstube Detail



Strap Securing Detail

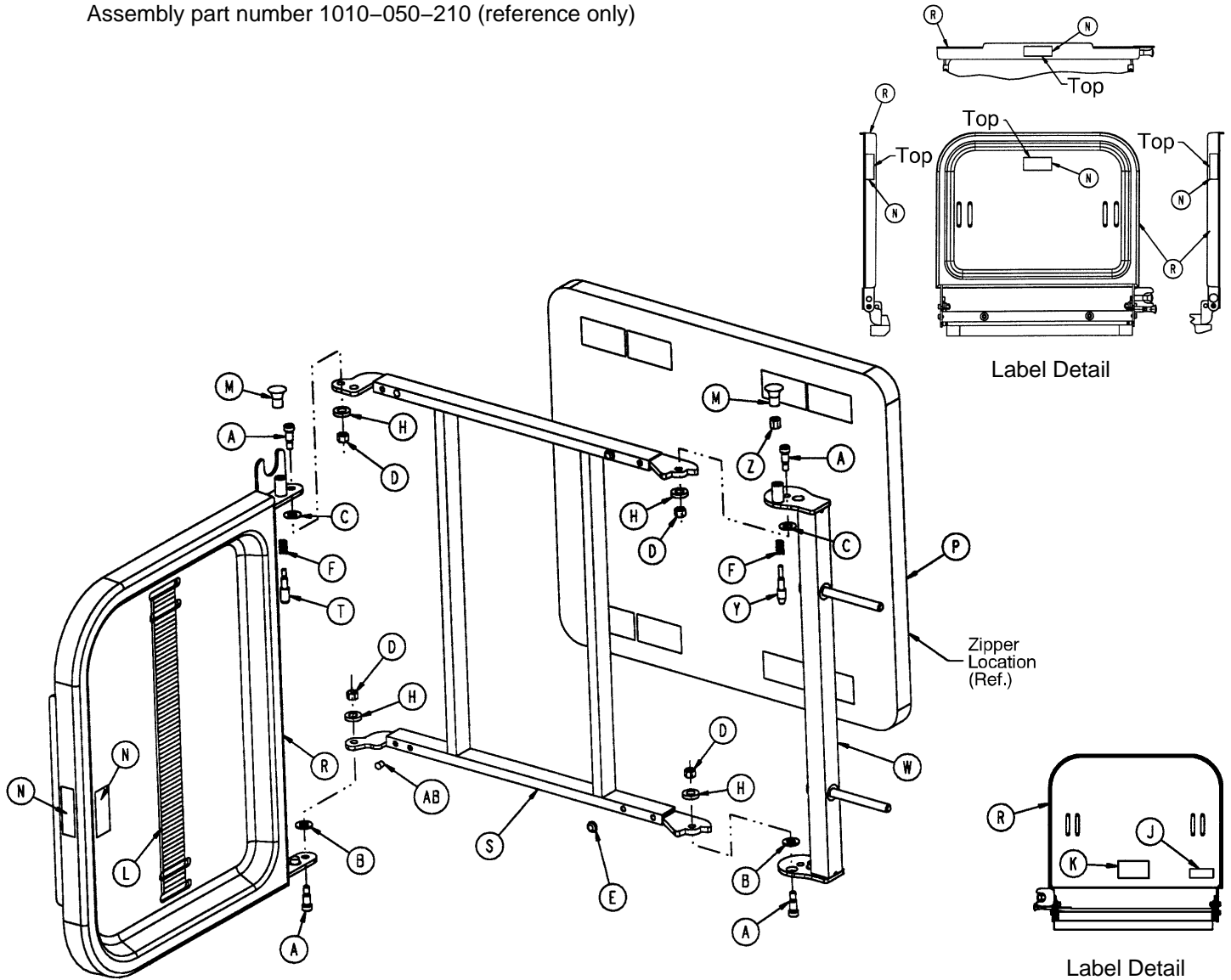


Item	Part No.	Part Name	Qty.	Item	Part No.	Part Name	Qty.
A	0946-039-004	Tray	1	J	0946-039-003	Support Tube	2
B	0926-039-016	Crosstube	3	K	0926-001-082	Label	1
C	0025-055-000	Rivet	4	L	1010-050-021	Long Strap	1
D	0926-039-009	Cover	1	N	0946-001-283	Label	1
E	0018-006-000	Umbrella Nut	6	P	0926-039-015	Holder	2
F	0029-008-000	Dual Lock	6	R	0002-044-000	Screw	2
H	0029-010-000	Dual Lock	6	S	0002-105-000	Rd. Hd. Mach. Screw	6



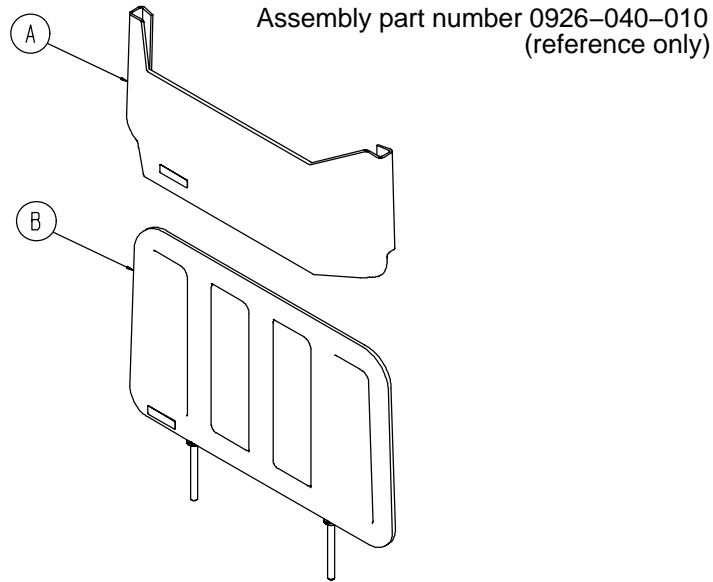
# 1010-050-100 Foot Extension/Defibrillator Tray Ass'y

Assembly part number 1010-050-210 (reference only)



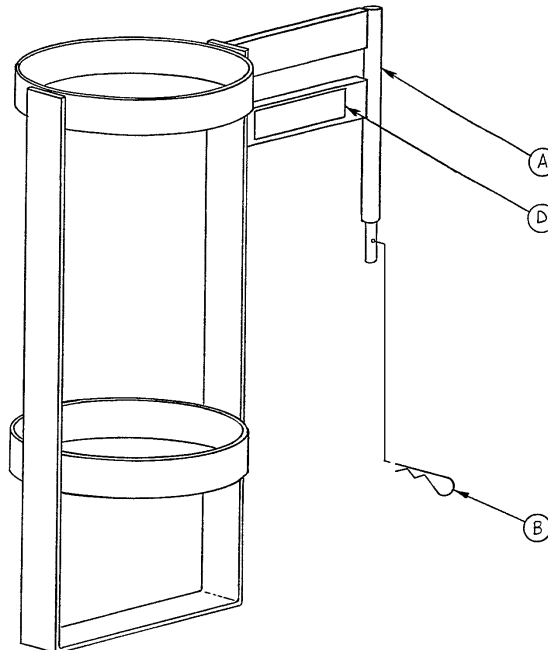
Item	Part No.	Part Name	Qty.	Item	Part No.	Part Name	Qty.
A	0008-049-000	Soc. Hd. Shoulder Bolt	4	M	1010-050-050	Knob	2
B	0014-020-000	Nylon Washer	2	N	1010-050-057	"Max. Weight" Label	4
C	0014-021-000	Nylon Washer	2	P	1010-050-205	Cushion Assembly	1
D	0016-028-000	Fiberlock Nut	4	R	1010-050-218	Foot & Tray Board	1
E	0037-052-000	Rubber Bumper	2	S	1010-050-225	Pivot Frame Weldment	1
F	0038-133-000	Spring	2	T	1010-050-242	Pin Lock	1
H	0052-017-000	Spacer	4	W	1010-050-246	Base Mounting Ass'y	1
J	1010-050-017	Specification Label	1	Y	1010-050-248	Lower Pin Lock	1
K	1010-050-019	"Push/Pull" Label	1	Z	1010-050-250	Pin Adjuster	1
L	1010-050-021	Long Strap	1	AB	0721-031-065	Hole Plug	2

# 0926-040-100 Foot Board/Chartholder Assembly



Item	Part No.	Part Name	Qty.
A	0946-028-011	Chart Holder	1
B	0946-029-006	Foot Board	1

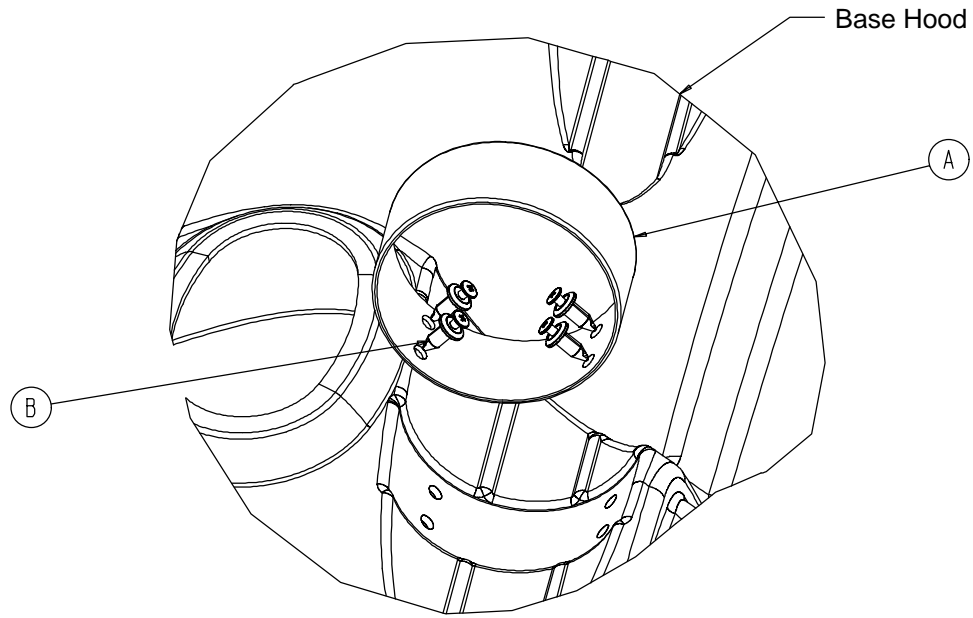
# 1020-030-000 Upright Oxygen Bottle Holder Ass'y



Item	Part No.	Part Name	Qty.
A	1020-030-011	Upright Bottle Holder	1
B	0027-012-000	Cotter Pin	1
D	1020-030-017	Specification Label	1

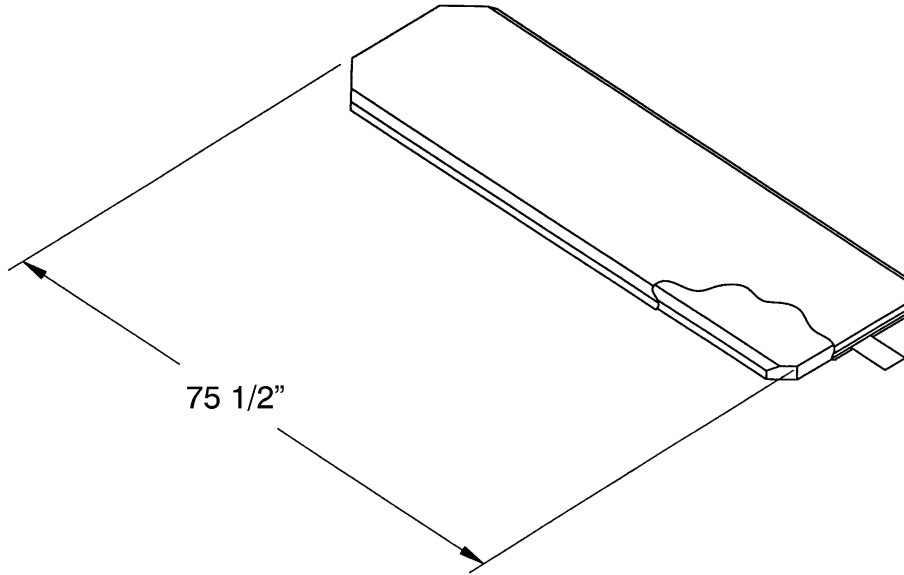
# 1040-010-090 Optional O<sub>2</sub> Bottle Retainer Assembly

---

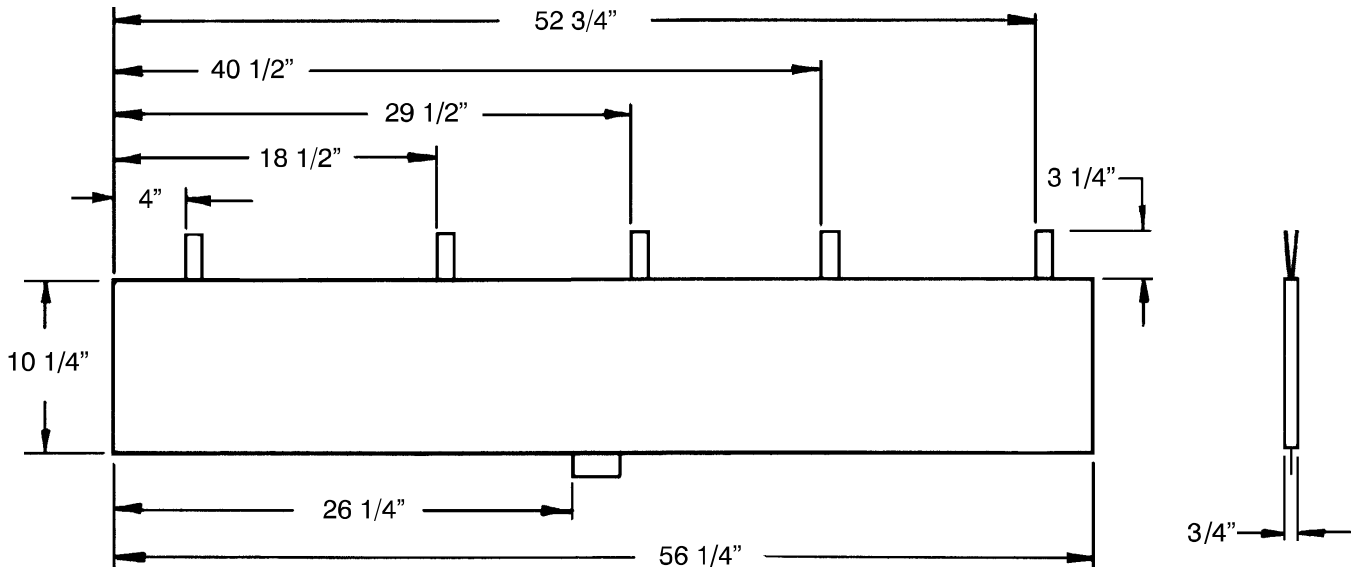


<b>Item</b>	<b>Part No.</b>	<b>Part Name</b>	<b>Qty.</b>
A	1040-010-091	Bottle Retainer	1
B	1040-010-092	Scrulok Fastener	4

# Mattresses and Siderail Pads



- Mattress, 3" Thick x 24" Wide, Enhanced Comfort ..... part # 0721-248-106
- Mattress, 4" Thick x 24" Wide, Enhanced Comfort ..... part # 0721-247-106
- Mattress, 3" Thick x 26" Wide, Enhanced Comfort ..... part # 1001-048-106
- Mattress, 4" Thick x 26" Wide, Enhanced Comfort ..... part # 1001-047-106
- Mattress, 3" Thick x 24" Wide, Standard ..... part # 1059-324-140
- Mattress, 3" Thick x 26" Wide, Standard ..... part # 1059-326-140



- Siderail Pad Set ..... part # 1010-052-000

# Warranty

---

## Limited Warranty:

Stryker Medical Division, a division of Stryker Corporation, warrants to the original purchaser that its products should be free from defects in material and workmanship for a period of one (1) year after date of delivery. Stryker's obligation under this warranty is expressly limited to supplying replacement parts and labor for, or replacing, at its option, any product which is, in the sole discretion of Stryker, found to be defective. Stryker warrants to the original purchaser that the frame and welds on its beds will be free from structural defects for as long as the original purchaser owns the bed. If requested by Stryker, products or parts for which a warranty claim is made shall be returned prepaid to Stryker's factory. Any improper use or any alteration or repair by others in such manner as in Stryker's judgement affects the product materially and adversely shall void this warranty. Any repair of Stryker products using parts not provided or authorized by Stryker shall void this warranty. No employee or representative of Stryker is authorized to change this warranty in any way.

Stryker Medical stretchers are designed for a 10 year expected life under normal use conditions and appropriate periodic maintenance as described in the maintenance manual for each device.

This statement constitutes Stryker's entire warranty with respect to the aforesaid equipment. STRYKER MAKES NO OTHER WARRANTY OR REPRESENTATION, EITHER EXPRESSED OR IMPLIED, EXCEPT AS SET FORTH HEREIN. THERE IS NO WARRANTY OF MERCHANTABILITY AND THERE ARE NO WARRANTIES OF FITNESS FOR ANY PARTICULAR PURPOSE. IN NO EVENT SHALL STRYKER BE LIABLE HEREUNDER FOR INCIDENTAL OR CONSEQUENTIAL DAMAGES ARISING FROM OR IN ANY MANNER RELATED TO SALES OR USE OF ANY SUCH EQUIPMENT.

## To Obtain Parts and Service:

Stryker products are supported by a nationwide network of dedicated Stryker Field Service Representatives. These representatives are factory trained, available locally, and carry a substantial spare parts inventory to minimize repair time. Simply call your local representative, or call Stryker Customer Service at (800) 327-0770.

## Service Contract Coverage:

Stryker has developed a comprehensive program of service contract options designed to keep your equipment operating at peak performance at the same time it eliminates unexpected costs. We recommend that these programs be activated *before* the expiration of the new product warranty to eliminate the potential of additional equipment upgrade charges.

## **A SERVICE CONTRACT HELPS TO:**

- Ensure equipment reliability
- Stabilize maintenance budgets
- Diminish downtime
- Establish documentation for JCAHO
- Increase product life
- Enhance trade-in value
- Address risk management and safety

# Warranty

**Stryker offers the following service contract programs:**

<b>SPECIFICATIONS</b>	<b>GOLD</b>	<b>SILVER</b>	<b>PM* ONLY</b>
Annually scheduled preventative maintenance	X		X
All parts,** labor, and travel	X	X	
Unlimited emergency service calls	X	X	
Priority one contact; two hour phone response	X	X	X
Most repairs will be completed within 3 business days	X	X	
JCAHO documentation	X	X	X
On-site log book w/ preventative maintenance & emergency service records	X		
Factory-trained Stryker Service Technicians	X	X	X
Stryker authorized parts	X	X	X
End of year summary	X		
Stryker will perform all service during regular business hours (9-5)	X	X	X

\* Replacement parts and labor for products under PM contract will be discounted.

\*\* Does not include any disposable items, I.V. poles (except for Stryker HD permanent poles), mattresses, or damage resulting from abuse.

**Stryker Medical also offers *personalized* service contracts.**

**Pricing is determined by age, location, model and condition of product.**

***For more information on our service contracts, please call your local representative or call (800) 327-0770 (option #2).***

## **Return Authorization:**

Merchandise cannot be returned without approval from the Stryker Customer Service Department. An authorization number will be provided which must be printed on the returned merchandise. Stryker reserves the right to charge shipping and restocking fees on returned items.

**SPECIAL, MODIFIED, OR DISCONTINUED ITEMS NOT SUBJECT TO RETURN.**

## **Damaged Merchandise:**

ICC Regulations require that claims for damaged merchandise must be made with the carrier within fifteen (15) days of receipt of merchandise. **DO NOT ACCEPT DAMAGED SHIPMENTS UNLESS SUCH DAMAGE IS NOTED ON THE DELIVERY RECEIPT AT THE TIME OF RECEIPT.** Upon prompt notification, Stryker will file a freight claim with the appropriate carrier for damages incurred. Claim will be limited in amount to the actual replacement cost. In the event that this information is not received by Stryker within the fifteen (15) day period following the delivery of the merchandise, or the damage was not noted on the delivery receipt at the time of receipt, the customer will be responsible for payment of the original invoice in full.

Claims for any short shipment must be made within thirty (30) days of invoice.

## **International Warranty Clause:**

This warranty reflects U.S. domestic policy. Warranty outside the U.S. may vary by country. Please contact your local Stryker Medical representative for additional information.

---

## **European Representative**

Stryker EMEA RA/QA Director  
Stryker France  
ZAC Satolas Green Pusignan  
Av. De Satolas Green  
69881 MEYZIEU Cedex  
France

**stryker**<sup>®</sup>

6300 S. Sprinkle Road, Kalamazoo, MI 49001-9799  
(800) 327-0770  
[www.strykermedical.com](http://www.strykermedical.com)



DH 6/04 0720-109-002 REV A