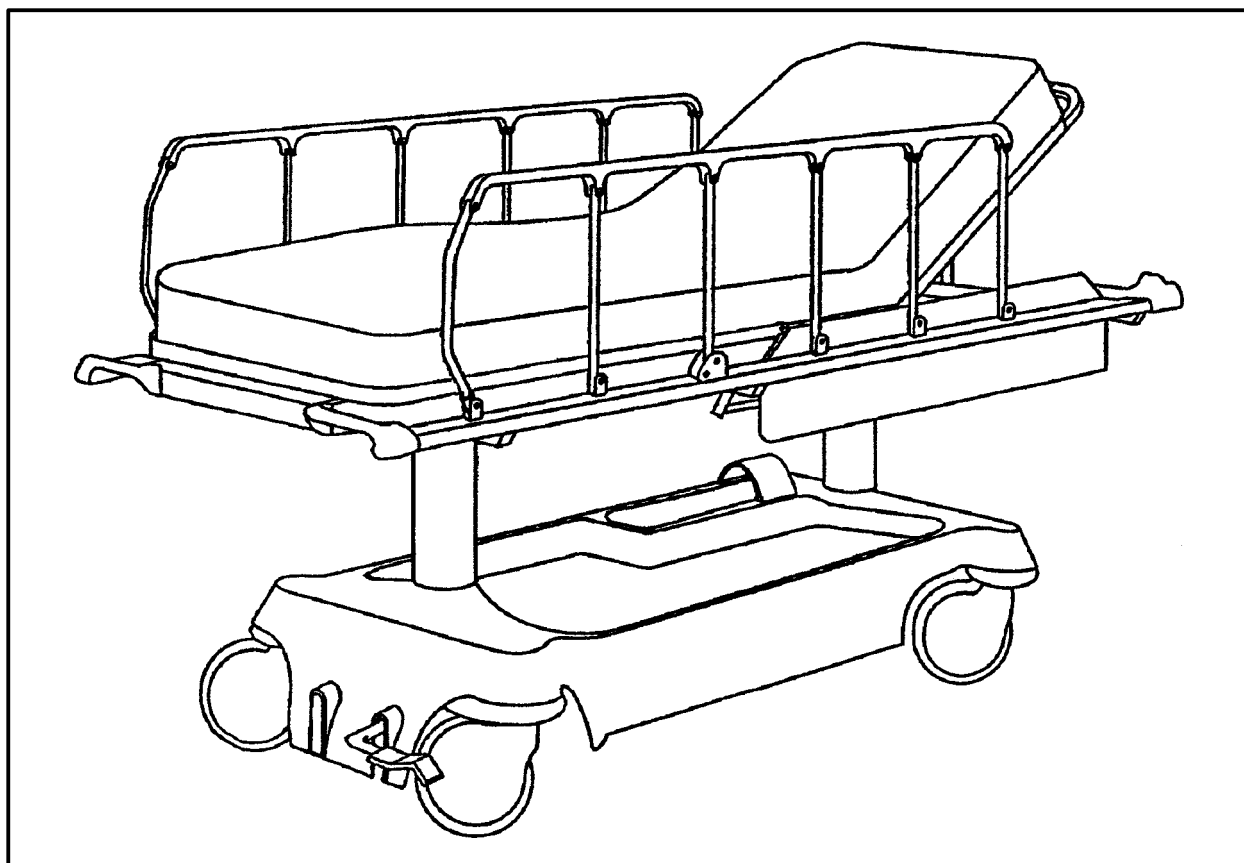

IMPORTANT
File in your
maintenance
records

stryker[®]
Medical



Renaissance Series

720 Transport Stretcher

MAINTENANCE MANUAL

For Parts or Technical Assistance
1-800-327-0770

Table of Contents

Introduction	
Specifications	2
Warning / Caution / Note Definition	2
Preventative Maintenance	3
Service Information	
Pneumatic Fowler Adjustment	4
Trendelenburg Adjustment	4
Siderail Latch Adjustment	5
Transfer Board Counterbalance Adjustment	5
Pedal Linkage Adjustment	6
Caster Assembly Replacement	7
Stretcher Height Adjustment	8
Brake Adjustment	9
Base Lubrication	9
Assembly Drawings and Parts Lists	
End Control Base Assembly (with Wheels)	10, 11
Brake Adjuster Assembly	12
Brake Cam Assembly	13
Brake Pedal Assembly, Foot End	14
Brake Pedal Assembly, Head End	15
Steering Caster Assembly	16
Caster and Caster Cover Assembly	17
Fifth Wheel Assembly	18
Stretcher Base Assembly	19
Base Hood Assembly	20
Base Labeling Assembly	21
Litter Assembly	22, 23
Manual Fowler Assembly	24
Manual Fowler to Litter Assembly	25
Pneumatic Fowler Assembly	26
Pneumatic Fowler to Frame Assembly	27
Stationary Footsection Assembly	28
Trendelenburg Assembly	29
Midsection Assembly	30
Footsection Assembly	31
Transfer System Assembly, Right	32
Transfer System Assembly, Left	33
Transfer System to Frame Assembly	34
Siderail Assembly	35
I.V. Pole Assembly	36
Foot Board/Chartholder Assembly	37
Oxygen Bottle Holder Assembly	37
Defibrillator Tray Assembly	38
Warranty	
Obtaining Parts and Service	39
Supplemental Warranty Coverage	39
Return Authorization	40
Freight Damage Claims	40

Introduction

INTRODUCTION

This manual is designed to assist you with the operation and maintenance of the 720 Transport Stretcher. Read it thoroughly before using the equipment or beginning any maintenance on it.

SPECIFICATIONS

Maximum Weight Capacity	500 pounds
Overall Bed Length/Width	81", 30"
Fixed Height Options	28", 30" ,32"
Fowler Angle	0 to 90 degrees

WARNING / CAUTION / NOTE DEFINITION

The words WARNING, CAUTION and NOTE carry special meanings and should be carefully reviewed.

WARNING

The personal safety of the patient or user may be involved. Disregarding this information could result in injury to the patient or user.

CAUTION

These instructions point out special procedures or precautions that must be followed to avoid damaging the equipment.

NOTE

This provides special information to make maintenance easier or important instructions clearer.

Preventative Maintenance

CLEANING

1. Hand wash all surfaces of the stretcher with warm water and mild detergent. Dry thoroughly.
2. Clean Velcro **AFTER EACH USE**. Saturate Velcro with disinfectant and allow disinfectant to evaporate. (Appropriate disinfectant for nylon Velcro should be determined by the hospital.)

BIANNUAL CHECKLIST

- _____ All fasteners secure (reference all assembly prints)
- _____ Siderails move and latch properly (page 5)
- _____ All casters lock securely with brake pedal engaged (page 9)
- _____ Steer function working properly
- _____ All casters secure and swivel properly
- _____ Body restraints working properly
- _____ I.V. pole intact and operating properly (page 36)
- _____ Oxygen bottle holder intact and operating properly (page 20 or 37)
- _____ Fowler operates and latches properly (pneumatic: page 4, manual: page 25)
- _____ Trendelenburg option operating properly (page 4)
- _____ No rips or cracks in mattress cover
- _____ Transfer boards intact and operating properly (page 5)
- _____ Ground chain intact
- _____ Lubricate where required, including the brake adjuster assembly and brake cam (page 9)

Serial No. _____

Completed By: _____

Date: _____

Service Information

PNEUMATIC FOWLER ADJUSTMENT

Required Tools:

3/32" Hex Allen Wrench	5/8" Open End Wrench	3/16" Hex Allen Wrench
1/8" Hex Allen Wrench	Channel Lock Pliers	Towel or Cloth
7/16" Open End Wrench	Thread Loctite	

Adjustment Procedure:

1. Refer to drawing 721–31–70 (Pneumatic Fowler Assembly, page 26).
2. For easier access, move Fowler to 75° or higher.
3. Using a 3/32 hex Allen wrench, remove set screws (N) located in center of yokes (D).
4. Wrap a towel or cloth around the gas cylinder actuator shaft(s) so as not to mark the shaft. Using channel lock pliers, turn actuator shaft(s) into yoke(s) (D) until tight.
5. Using thread Loctite, reinstall set screws (N).
6. While holding the jam nut spacers (R) with a 5/8 open end wrench, turn the adjustment screws (P) using a 3/16 hex Allen wrench until they JUST touch the cylinder pins.
7. Bring the Fowler fully down, and with the handle fully released, using a 1/8 hex Allen wrench, tighten the bottom set screws (S) so the handle is lifted 1/8–1/4 inch above the spine tube. Both set screws must touch the handle. Using a 7/16 open end wrench, tighten the jam nuts (Y) on these set screws.
8. Be sure the Fowler will travel from flat to at least 90 degrees. If it doesn't, turn each adjustment screw (P) clockwise 1/2 turn. Repeat until at least 90 degrees of travel is achieved.
9. Lower the Fowler to a 5–10 degree angle and release the handle. Apply approximately 50 pounds downward to the end of the Fowler. If either side drifts down, turn the adjustment screw (P) on that side 1/4 turn counterclockwise. Repeat until the Fowler is firm with 50 pounds applied.
10. While holding the adjustment screws (P), tighten the jam nut spacers (R).

TRENDELENBURG ADJUSTMENT

Required Tools:

3/32" Hex Allen Wrench	5/8" Open End Wrench	3/16" Hex Allen Wrench
1/8" Hex Allen Wrench	Channel Lock Pliers	Towel or Cloth
7/16" Open End Wrench	Thread Loctite	

Adjustment Procedure:

1. Refer to drawings 720–34–70 (Trendelenburg Assembly, page 29) and 720–34–35 (Foot Section Assembly page 30).
2. Using a 3/32 hex Allen wrench, remove set screws (M), located in center of yokes (D).
3. Wrap a towel or cloth around the gas cylinder actuator shaft(s) so as not to mark the shaft. Using channel lock pliers, turn actuator shaft(s) into yoke(s) (D) until tight. Using thread Loctite, reinstall set screws (M).
4. While holding the jam nut spacers (P) with a 5/8 open end wrench, turn the adjustment screws (N) using a 3/16 hex Allen wrench until they JUST touch the cylinder pins.
5. Bring the foot section fully down, and with the handle fully released, using a 1/8 hex Allen wrench, tighten the bottom set screws (R) so the handle is lifted 1/8–1/4 inch. Both set screws must touch the handle. Using a 7/16 open end wrench, tighten the jam nuts (W) on these set screws.
6. Be sure the foot section will raise until it is stopped by the limiter cable. If it doesn't, turn each adjustment screw (N) clockwise 1/2 turn. Repeat until full travel is achieved.
7. Lower the foot section to a 5–10 degree angle and release the handle. Apply approximately 50 pounds downward to the end of the footsection. If either side drifts down, turn the adjustment screw (N) on that side 1/4 turn counterclockwise. Repeat until the footsection is firm with 50 pounds applied.
8. While holding the adjustment screws (N), tighten the jam nut spacers (P).

Service Information

SIDERAIL LATCH ADJUSTMENT

Required Tools:

1/8 Hex Allen Wrench

WARNING

The siderail latch adjustment is pre-set at the factory, and should not normally need adjusting. If adjustment must be done it is important to follow the procedure below. If it is not done properly, injury to the patient or user could occur.

Adjustment Procedure:

1. Using a 1/8" hex Allen wrench, adjust the Allen screw located on the latch assembly opposite the latch. Turning the screw clockwise will **DECREASE** the amount of "play" in the latch. Turning counterclockwise will **INCREASE** the amount.

NOTE

The amount of "play" in the siderail, when in full up engaged position, should be approximately 1/8 to 3/16 inches.

CAUTION

Too much "play" when the siderail is in the full up engaged position will give the siderail the appearance of being unstable and could also cause premature wearing of the latch system. Too little "play" will obstruct the latch and keep it from engaging completely in the full up position, which may cause damage to the latch and/or injury to the patient or user.

TRANSFER BOARD COUNTERBALANCE ADJUSTMENT

Required Tools:

7/16 Open End Wrench

Adjustment Procedure:

1. Raise the transfer board to the full up position.
2. Unhook the extension spring at the eye bolt.
3. Using a 7/16 open end wrench, loosen the jam nut at the eye bolt.
4. Adjust the eye bolt to the desired position.
5. Tighten the jam nut.
6. Hook the extension spring to the eye bolt.
7. Allow the transfer board to lower on its own.
8. Repeat steps 1–7 until the desired counterbalance is achieved.

Service Information

PEDAL LINKAGE ADJUSTMENT

Required Tools:

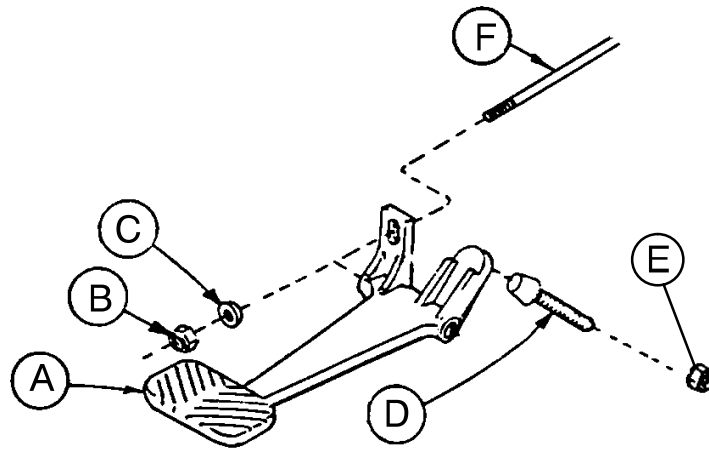
7/16 Open End Wrench

1/2 Open End Wrench

(2) Wooden Blocks (10 – 12 inches in length)

Adjustment Procedure:

1. Pump the litter up to full height.
2. Lift the base hood, separating the hood from the base frame. Using the wooden blocks, support the base hood.
3. The descent pedals should be level with each other and there should be approximately 4 inches between the floor and the bottom of the pedal. To raise the pedal height, use a 1/2 open end wrench to loosen the hex jam nut (E). Using your hand, turn the screw (D) into the bracket. To lower the pedal height, loosen the screw. Tighten the hex jam nut (E) after the correct height is achieved.
4. Once the pedals are level, the release rod can be adjusted. Using a 7/16 wrench, turn nut (B) clockwise to shorten the release length and counterclockwise to increase the length.
5. Depress the pedal and be sure the jack descent is triggered when the pedal is approximately one inch from the floor. The descent should stop when the pedal is released and the jack height should hold. Repeat the above procedures for the descent pedal at the other end of the bed.
6. After adjusting each descent pedal individually, depress both pedals at the same time. Both jacks should start descending when the pedals are approximately one inch from the floor. The foot end should lower slightly faster than the head end. If it does not, see procedure for adjusting the jack descent rate.
7. Remove the wooden blocks supporting the base hood and secure the hood to the base frame.



Service Information

CASTER ASSEMBLY REPLACEMENT*

Required Tools:

1/8 Roll Pin Punch	Drill with 1/8 inch Drill Bit
Flat Punch (any size larger than 1/8)	Hammer
Needle Nose Pliers	Floor Jack
3/4 Inch Wrench	(2) Wooden Blocks (10 – 12 inches in length)
1 Inch Wrench	Torque Wrench (w/ Ft. Lbs. Adjust.)

Replacement Procedure:

1. Pump the litter up to full height.
2. Lift the base hood, separating the hood from the base frame. Using the wooden blocks, support the base hood.
3. Using a 1/8 roll pin punch and hammer, remove roll pin located in center of lug nut holding wheel assembly to base frame.
4. Carefully remove plastic wheel covers.
5. Using a floor jack, lift base frame approximately 4 inches off the ground.
6. While holding cap screw with a 3/4 inch wrench, turn lug nut with a 1 inch wrench to loosen wheel assembly from base frame. Remove wheel.
7. Install the new wheel assembly with new lug nut and tighten down to 60 – 65 foot-pounds torque.

WARNING

Never reuse the old lug nut, cap screw or roll pin once removed from base frame.

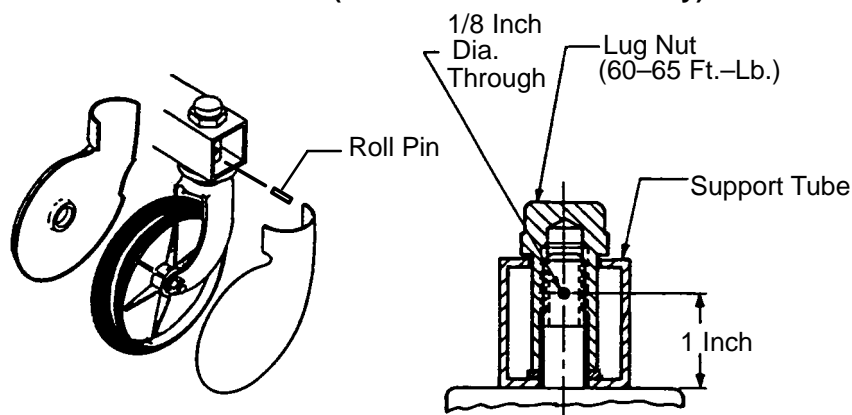
8. Lower the floor jack and set aside to be used, if needed, with another wheel.
 9. Drill a 1/8 hole in center of lug nut, going completely through the lug nut.
-

CAUTION

Be careful not to "oblong" the hole in the lug nut when drilling.

10. Using needle nose pliers, hold on to roll pin and tap into place. Finish driving roll pin with a flat head punch and a hammer until flush with the lug nut.
11. Install plastic wheel covers onto wheel.
12. Remove the wooden blocks supporting the base hood and secure the hood to the base frame.

*Replacement Part Number 715-100-127 (Caster and Cover Assembly)



Service Information

STRETCHER HEIGHT ADJUSTMENT

NOTE

The 720 Transport Stretcher is available in three "fixed" heights: 28", 30", and 32". The pre-set stretcher height was chosen at the time of purchase. Follow the procedure below to change the stretcher height. Refer to page 19, drawing number 720-100-20 for part identification.

Required Tools:

1/2" Open End Wrench

1/2" Socket with Ratchet

Adjustment Procedure:

WARNING

Do not attempt the following adjustment with a patient on the stretcher.

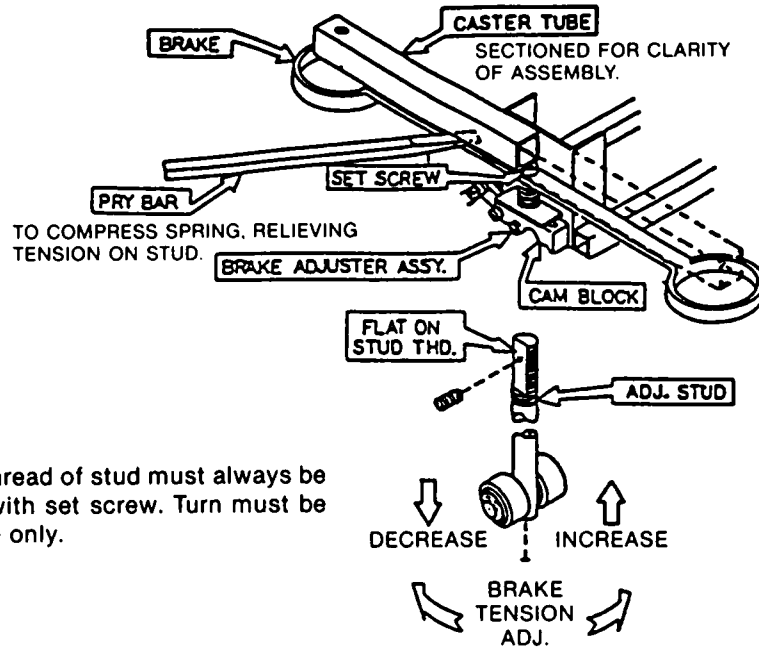
1. Using a 1/2" open end wrench and 1/2" socket with ratchet, loosen the 2 bolts (F) and 2 self-locking nuts (J) located on the head and foot end upper tower assemblies (B).
2. Remove only the 4 self-locking nuts (J).
3. Lift the litter top from both ends simultaneously only enough to relieve the pressure on the 4 bolts (F) and remove the bolts and 8 washers (L).
4. Adjust to the desired height by aligning the appropriate holes located in both the head and foot end upper and lower tower assemblies.
5. Reinstall the 4 bolts, 8 washers and 4 self-locking nuts and tighten securely.

Service Information

BRAKE ADJUSTMENT

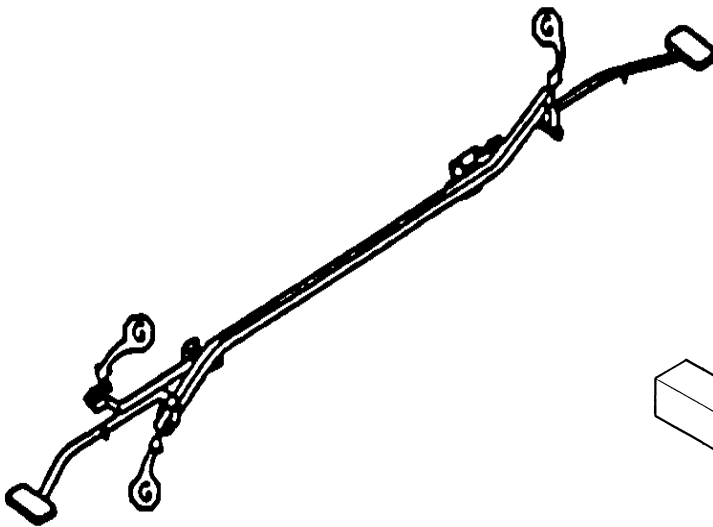
Required Tools:

3/32" Hex Allen Wrench
Pry Bar
Thread "Locktite"

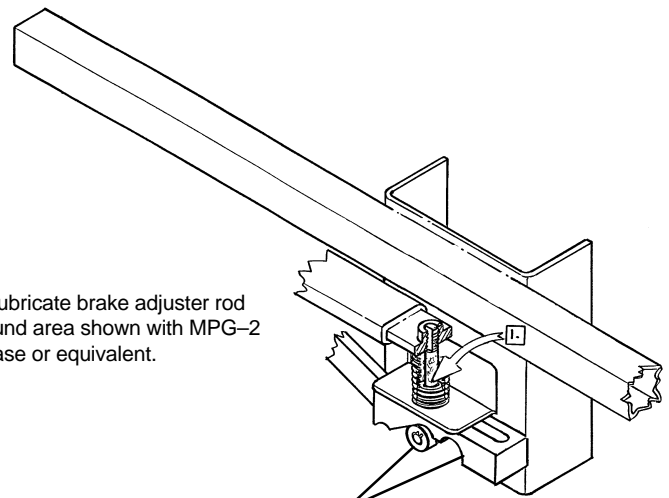


Flat on thread of stud must always be aligned with set screw. Turn must be full circle only.

BASE LUBRICATION

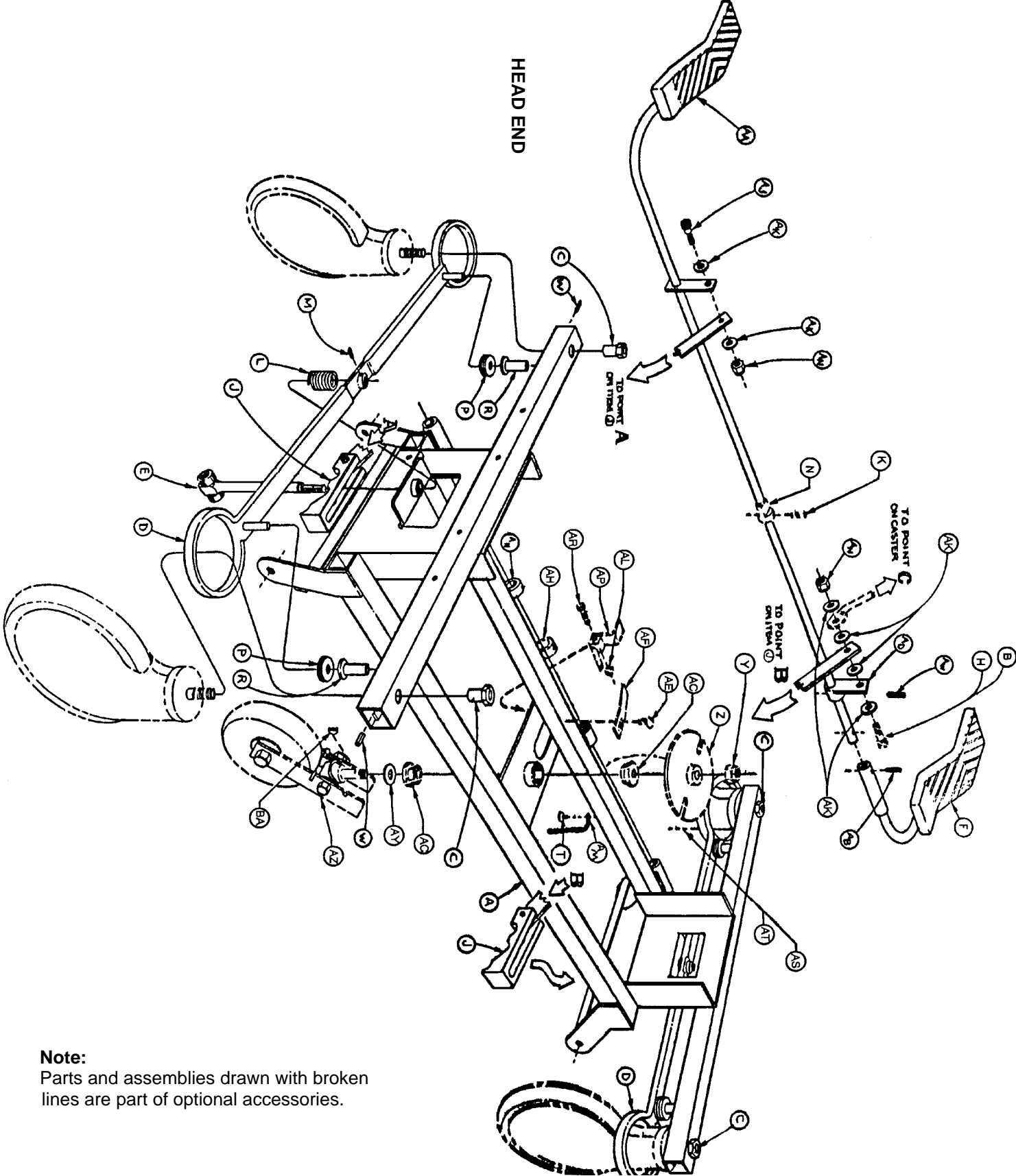


1. Lubricate brake adjuster rod around area shown with MPG-2 grease or equivalent.



Do not grease area shown.

716-1-251 Base Assembly (with Wheels)



Note:
 Parts and assemblies drawn with broken lines are part of optional accessories.

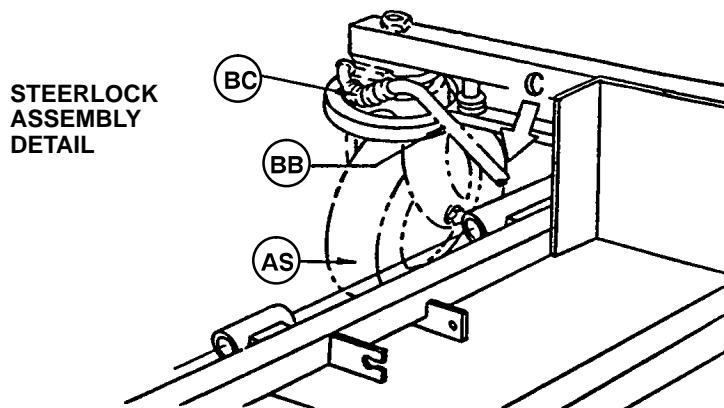
716-1-251 Base Assembly (with Wheels)

Item	Part No.	Part Name	Qty.
A	716-1-246	Base Weldment Ass'y	1
B	8-17	Soc. Hd. Shoulder Bolt	1*
C	715-1-158	Caster Nut	4
D	715-1-61	Caster Brake Assembly	2
E	(Page 12)	Brake Adjuster Assembly	2
F	(Page 14)	Brake Pedal Ass'y, Ft. End	1
H	8-21	Soc. Hd. Shoulder Bolt	1**
J	(Page 13)	Brake Cam Assembly	2
K	26-8	Roll Pin	1
L	715-1-94	Compression Spring	2
M	21-50	Set Screw	2
N	715-1-161	Fifth Wheel Cam	1
P	715-1-11	Brake Cushion	4
R	946-1-116	Brake Bar Bushing	4
T	23-25	Self-Tapping Screw	1
W	26-5	Roll Pin	4
Y	16-49	Flexlock Nut	1
Z	715-1-337	Fifth Wheel Plate Ass'y	1
AA	(Page 15)	Brake Pedal Ass'y, Hd. End	1
AB	26-35	Roll Pin	1
AC	715-1-157	Fifth Wheel Bearing	2
AD	715-1-165	Actuator Plate Assembly	1
AE	7-4	Truss Hd. Mach. Screw	1
AF	715-1-136	Fifth Wheel Spring	1
AH	42-20	Collar w/ Set Screw	2
AJ	8-17	Soc. Hd. Shoulder Bolt	1
AK	14-2	Nylon Washer	6
AL	16-16	Nylock Nut	1
AM	715-1-156	Grounding Chain	1
AN	16-2	Fiberlock Nut	2
AP	715-1-217	Fifth Wheel Latch	1
AR	3-20	Hex Hd. Cap Screw	1
AS	(Page 16)	Steering Caster Ass'y	1**
AT	(Page 17)	Caster Wheel Ass'y	3***
AY	11-176	Washer	1
AW	26-13	Roll Pin	1
AZ	(Page 18)	Fifth Wheel Ass'y	1
BA	715-1-149	Woodruff Key	1
BB	1000-10-62	Steering Lock Linkage Bar	1
BC	38-211	Spring	1

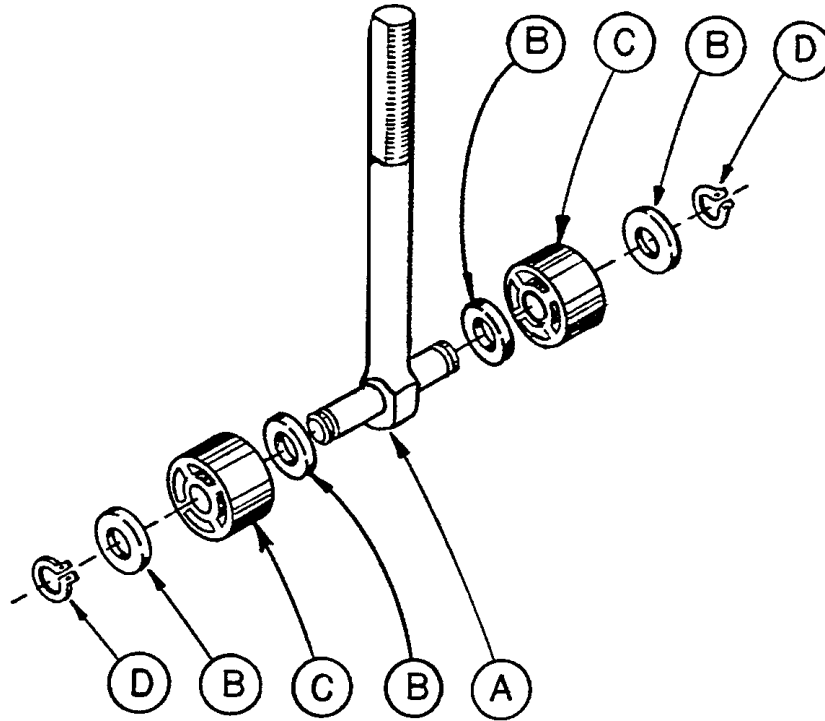
* Item B to be used only when fifth wheel is ordered.

**Items H and AS to be used only when steerlock caster is ordered.

*** Item AT quantity of four when fifth wheel is ordered.

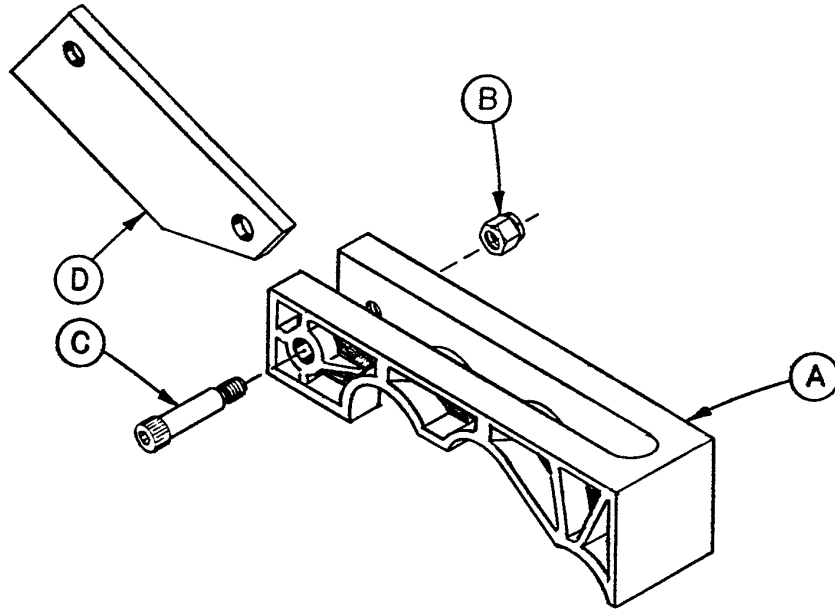


715-1-150 Brake Adjuster Assembly



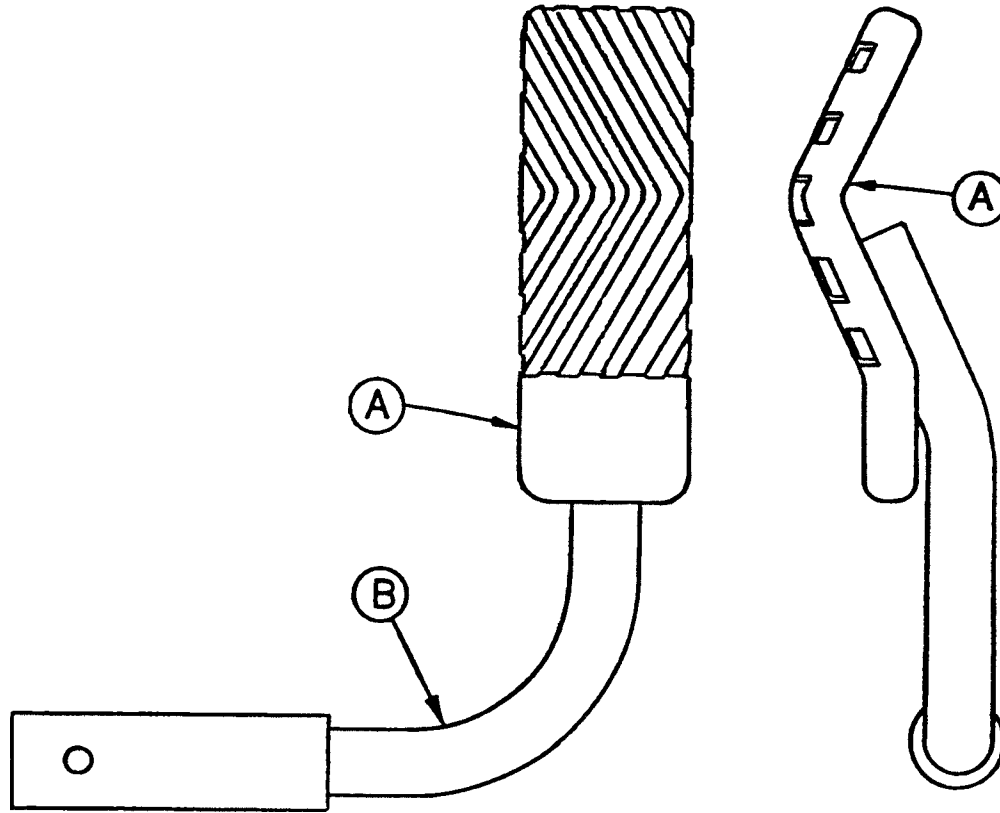
Item	Part No.	Part Name	Qty.
A	715-1-62	Threaded Stud Assembly	1
B	14-4	Nylon Washer	4
C	715-1-180	Bearing	2
D	28-8	Retaining Ring	2

715-1-213 Brake Cam Assembly



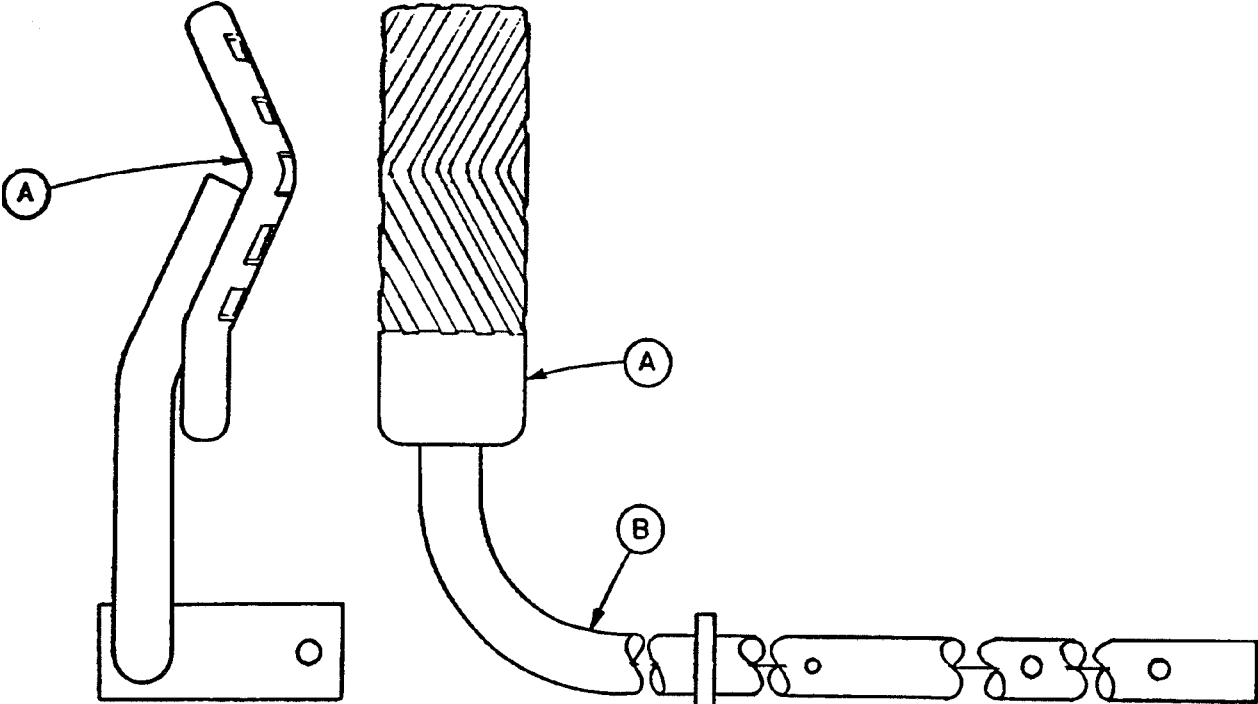
Item	Part No.	Part Name	Qty.
A	715-1-221	Brake Cam	1
B	16-59	Fiberlock Nut	1
C	8-21	Soc. Hd. Cap Screw	1
D	715-1-173	Brake Connecting Link	1

716-1-263 Brake Pedal Assembly, Foot End



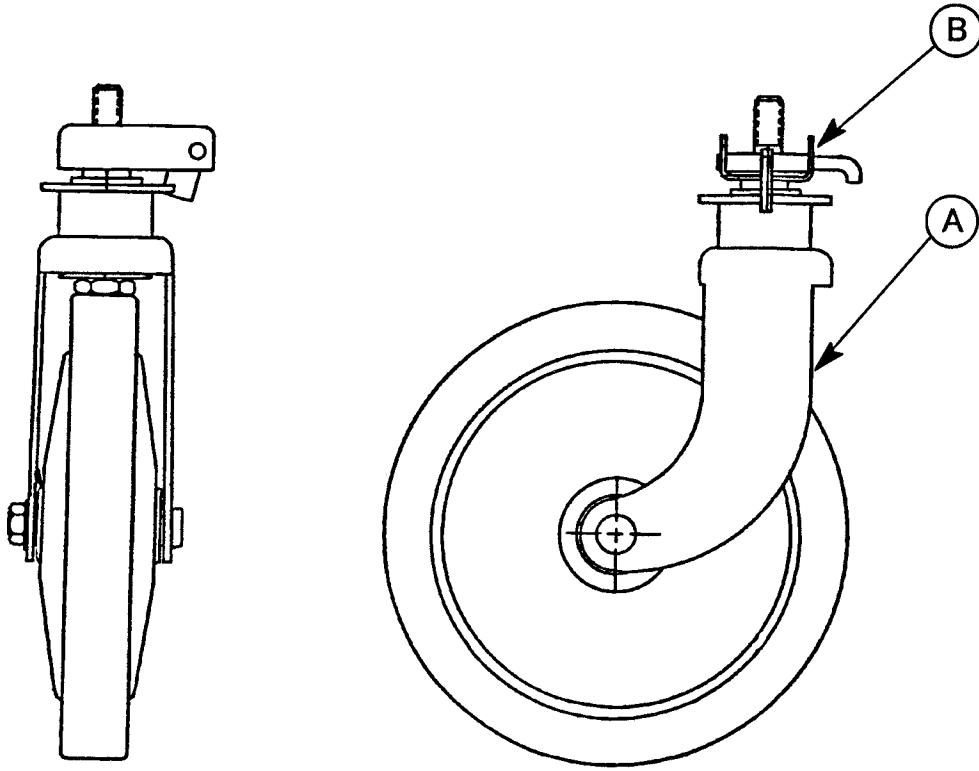
Item	Part No.	Part Name	Qty.
A	716-1-275	Brake Pedal	1
B	716-1-262	Brake Rod Ass'y, Ft. End	1

716-1-269 Brake Pedal Assembly, Head End



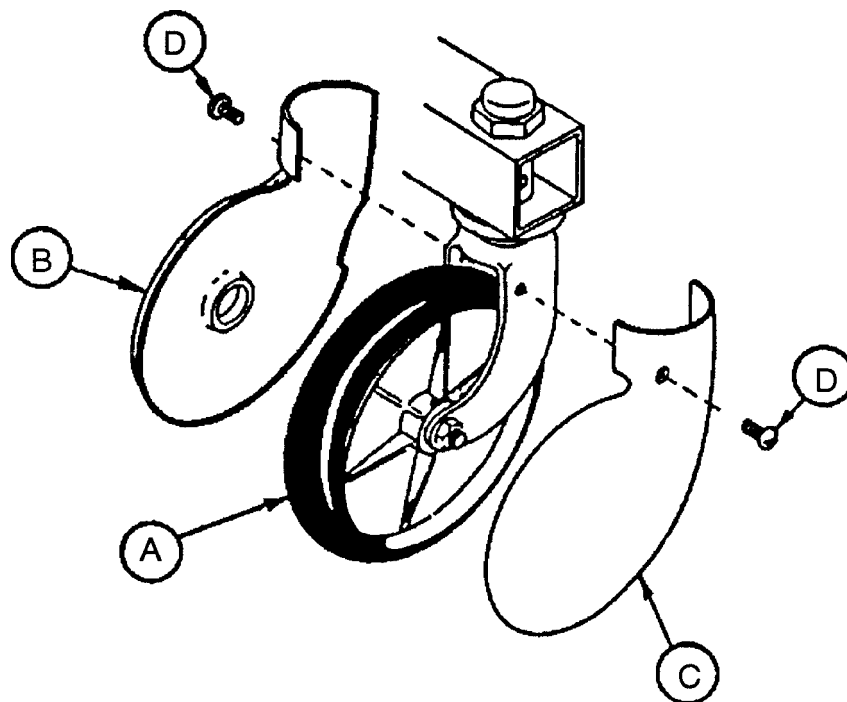
Item	Part No.	Part Name	Qty.
A	716-1-275	Brake Pedal	1
B	716-1-267	Brake Rod Ass'y, Welded	1

2020-46-220 Steering Caster Assembly



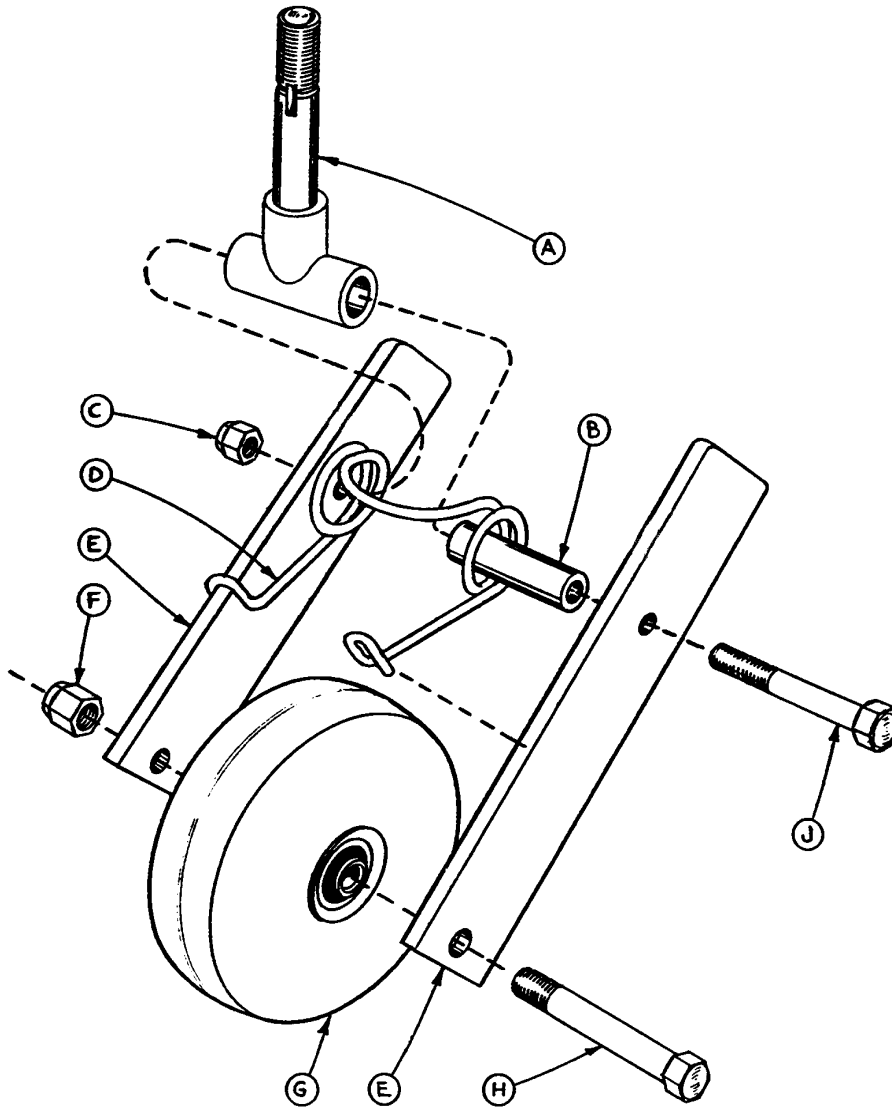
Item	Part No.	Part Name	Qty.
A	946-1-279	Caster Assembly	1
B	1000-59-10	Latch Ass'y, Steer Caster	1

715-100-127 Caster and Caster Cover Assembly



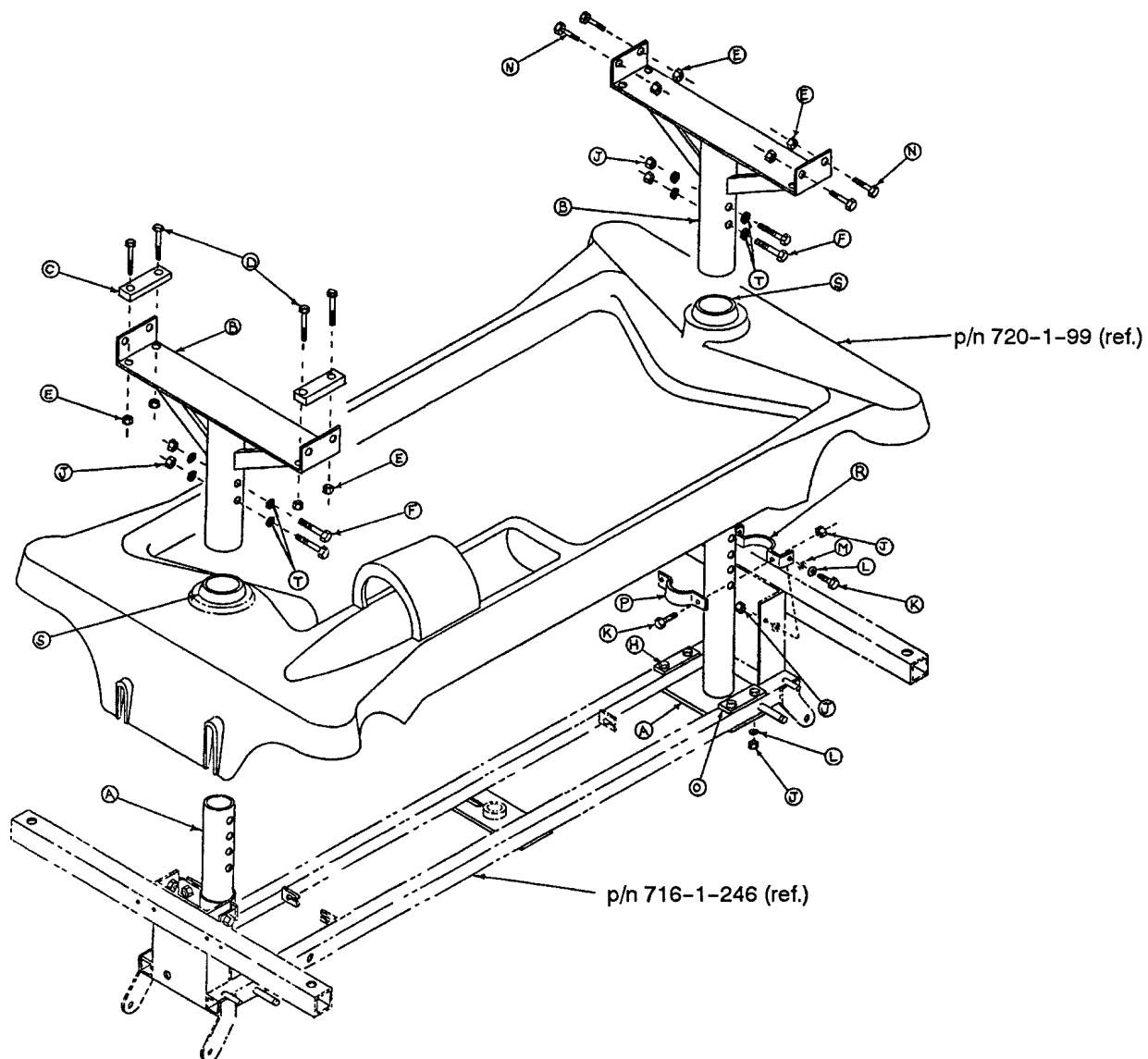
Item	Part No.	Part Name	Qty.
A	946-1-276	Caster Assembly	1
B	715-1-139	Caster Cover, Left	1
C	715-1-138	Caster Cover, Right	1
D	23-59	Pan Hd. Self-Tapping Screw	2

715-1-25 Fifth Wheel Assembly



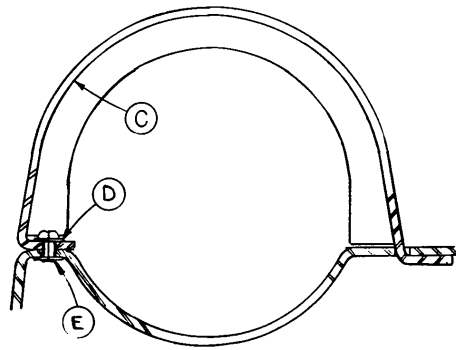
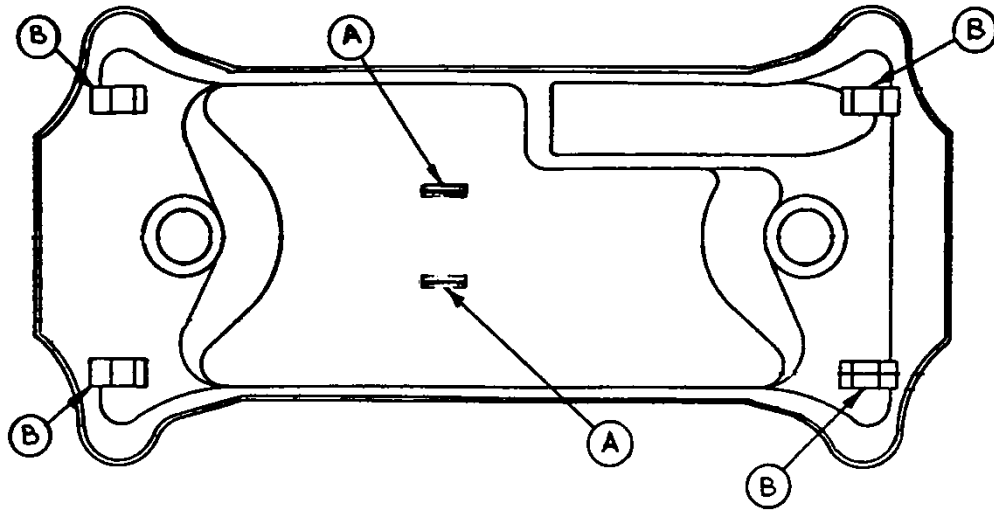
Item	Part No.	Part Name	Qty.
A	715-1-339	Fifth Wheel Pivot Assembly	1
B	715-1-17	Fifth Wheel Bushing	1
C	16-11	Flexlock Nut	1
D	715-1-15	Spring	1
E	715-1-13	Fifth Wheel Bracket	2
F	16-12	Flexlock Nut	1
G	390-1-54	Wheel	1
H	3-31	Hex Head Cap Screw	1
J	3-82	Hex Head Cap Screw	1

720-100-20 Stretcher Base Assembly



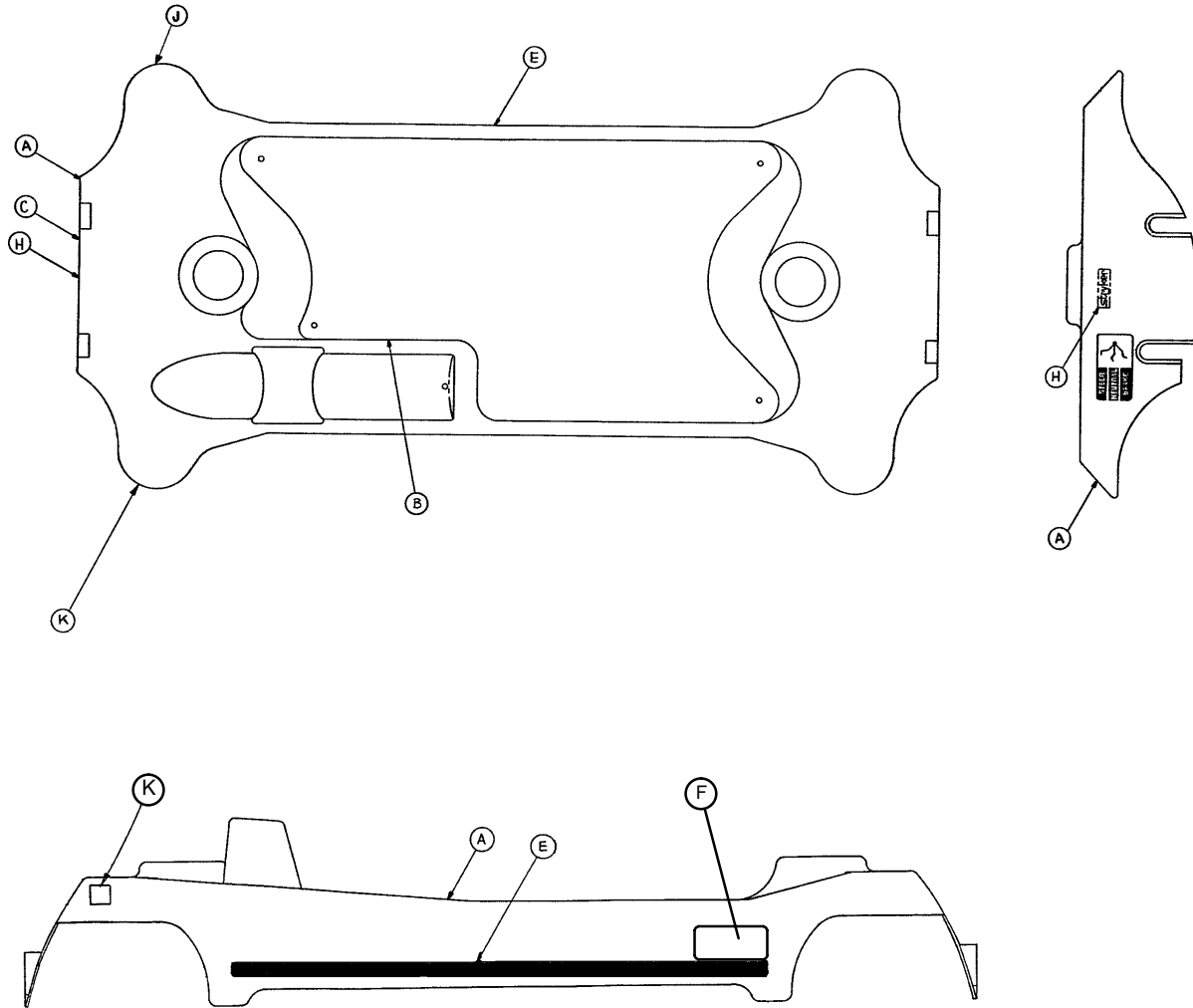
Item	Part No.	Part Name	Qty.
A	720-33-25	Lower Tower Ass'y	2
B	720-33-35	Upper Tower Ass'y	2
C	720-33-33	Front Spacer	2
D	3-56	Hex Hd. Cap Screw	4
E	16-28	Nylock Nut	8
F	3-93	Hex Hd. Cap Screw	4
H	3-40	Hex Hd. Cap Screw	8
J	16-36	Self-Locking Nut	20
K	3-85	Hex Hd. Cap Screw	8
L	11-3	Washer	12
M	13-38	Lock Washer	4
N	3-47	Hex Hd. Cap Screw	4
O	11-262	Flat Washer	8
P	715-1-193	Jack Clamp	2
R	715-1-192	Jack Support	2
S	946-421-5	Grommet	2
T	390-38-3	Formed Washer	8

720-1-99 Base Hood Assembly



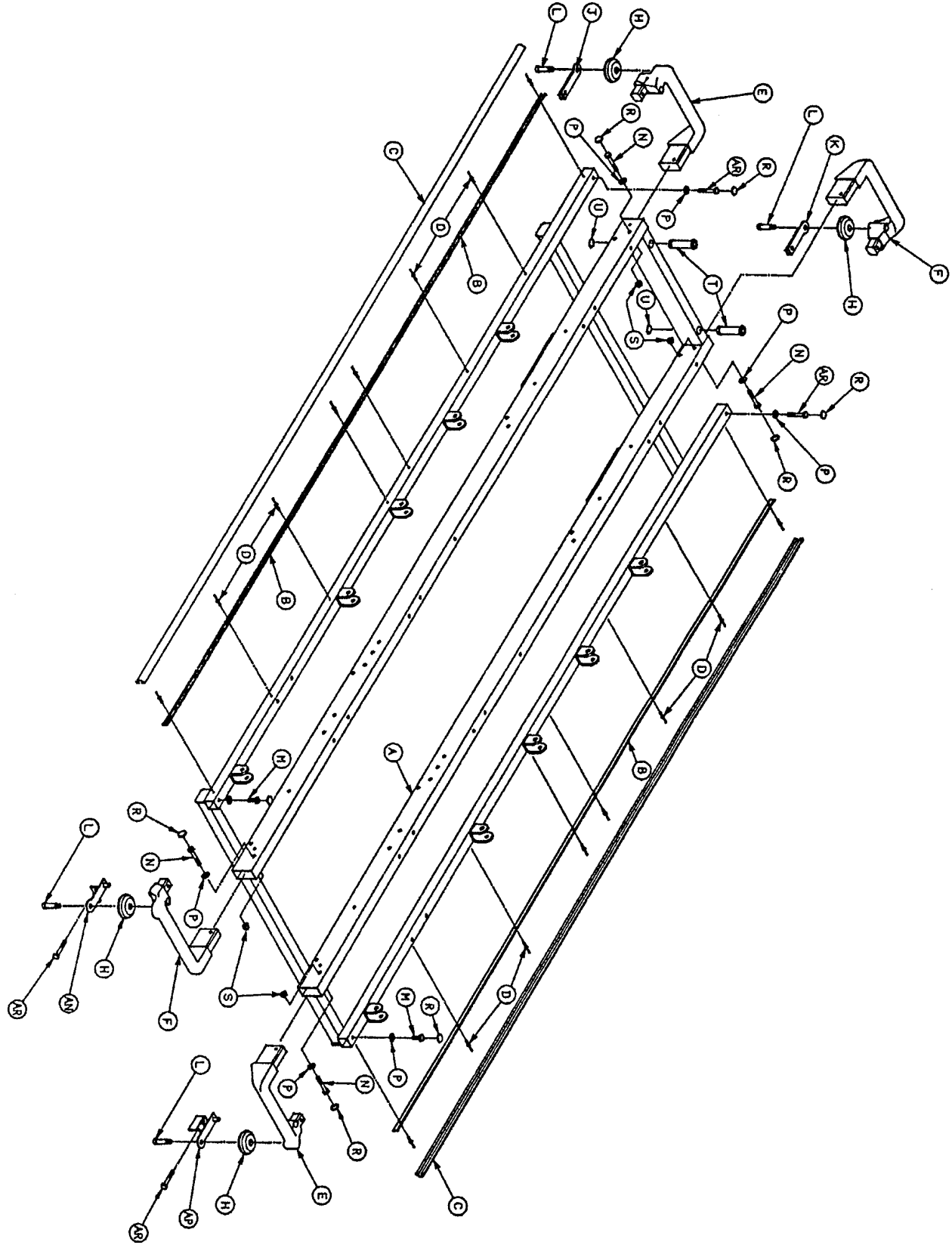
Item	Part No.	Part Name	Qty.
A	715-1-153	Hood Spacer	2
B	715-1-151	Foam Hood Mount	4
C	715-1-176	Oxygen Bottle Retainer	1
D	11-16	Washer	2
E	25-88	Pop Rivet	2

Base Labeling Assembly



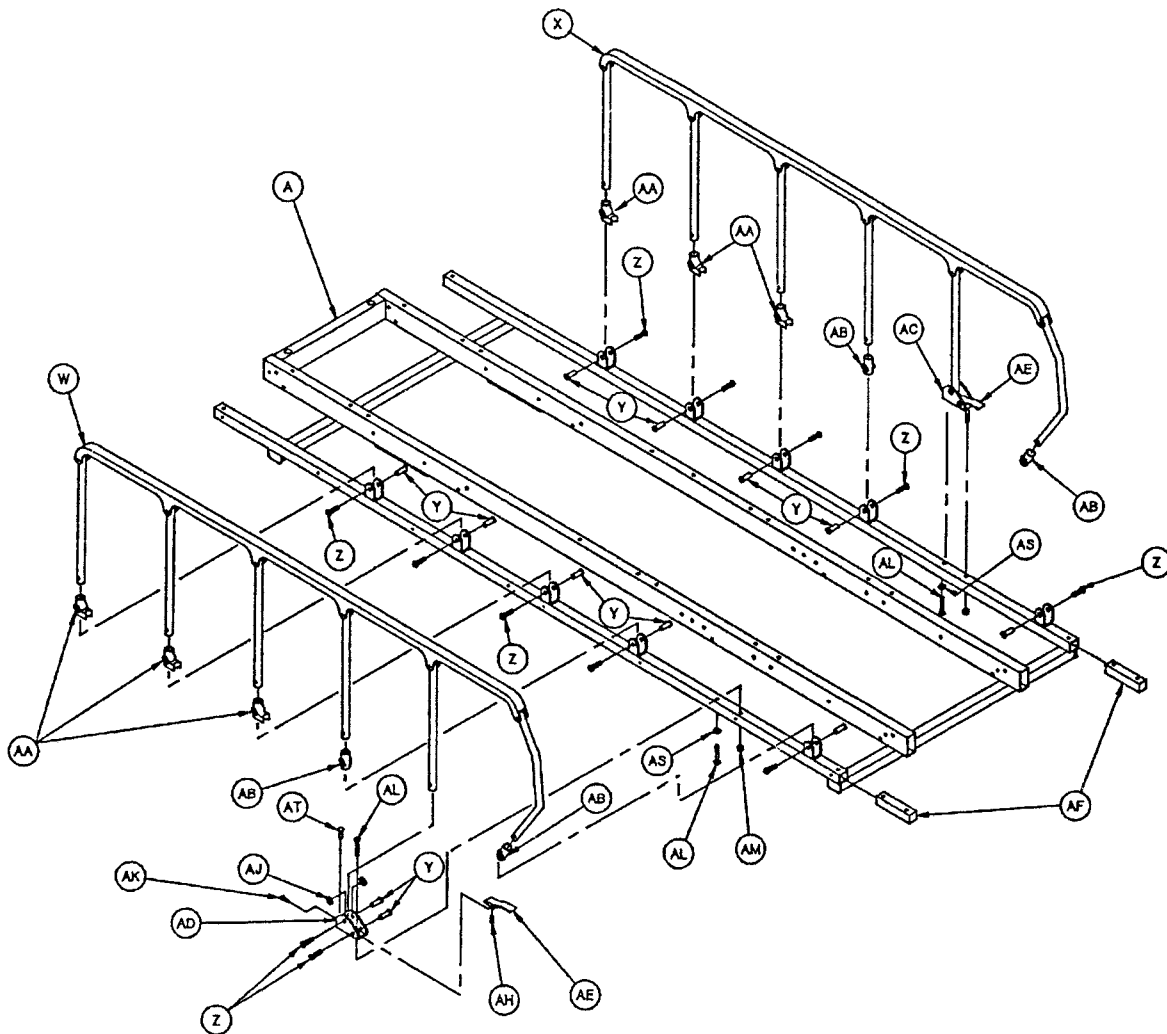
Item	Part No.	Part Name	Qty.
A	(page 20)	Hood Assembly	1
B	721-32-90	Specification Label	1
C	721-31-44	Brake/Steer Label, Head	1
D	721-31-45	Brake/Steer Label, Foot	1
E	720-1-165	Side Strip Label	2
F	1010-1-50	Renaissance Series Logo Label	2
H	946-1-60	Stryker Logo Label	2
J	741-34-18	"Head Point" Label, Left	1
K	741-34-19	"Head Point" Label, Right	1

720-33-15 Basic Litter Assembly

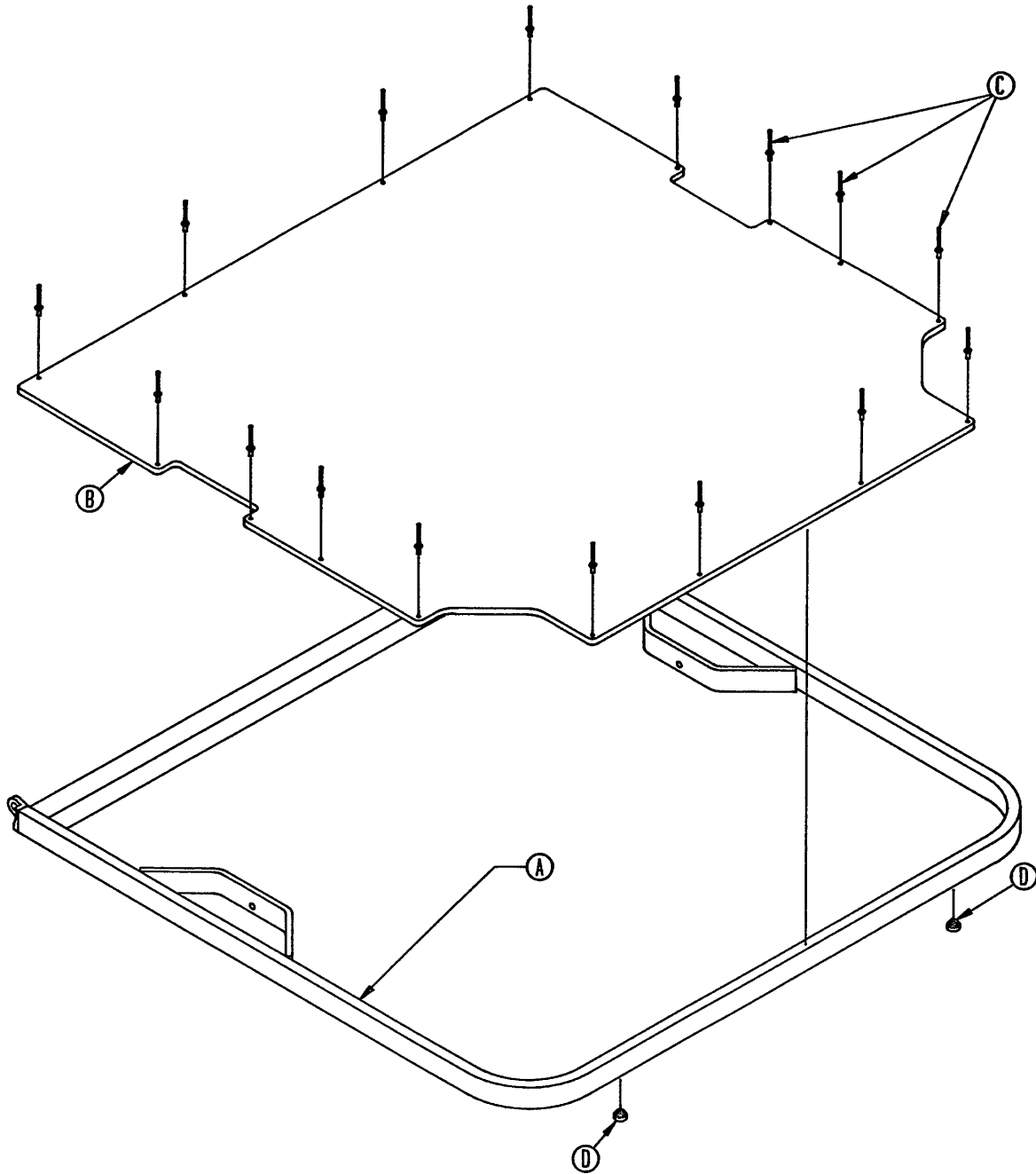


720-33-15 Basic Litter Assembly

Item	Part No.	Part Name	Qty.	Item	Part No.	Part Name	Qty.
A	721-32-193	Frame Assembly	1	Y	721-26-96	Pivot Screw	14
B	721-26-85	Bumper Channel	2	Z	4-136	But. Hd. Cap Screw	14
C	721-26-45	Siderail Bumper	2	AA	721-26-68	Upright Cradle	6
D	25-65	Pop Rivet	20	AB	721-26-69	Upright Sleeve	4
E	721-32-171	Handle, Right	2	AC	1010-26-81	Lock Housing, Right	1
F	721-32-170	Handle, Left	2	AD	1010-26-80	Lock Housing, Left	1
H	721-32-49	Bumper Roller	4	AE	721-26-74	Lock Handle, Mach.	2
J	721-32-183	Han. Supt. Ass'y, Hd., Rt.	1	AF	1010-26-69	Lock Support	2
K	721-32-182	Han. Supt. Ass'y, Hd., Lt.	1	AH	38-220	Compression Spring	2
L	8-24	Shoulder Bolt	4	AJ	11-179	Nylon Flat Washer	4
M	3-50	Hex Hd. Cap Screw	2	AK	21-104	Set Screw	2
N	3-74	Hex Hd. Cap Screw	4	AL	4-135	But. Hd. Cap Screw	4
P	37-76	Retaining Washer	8	AM	16-28	Nylock Hex Nut	2
R	37-55	Protective Cap	8	AN	721-32-180	Han. Supt. Ass'y, Ft., Lt	1
S	17-4	Acorn Nut	4	AP	721-32-181	Han. Supt. Ass'y, Ft., Rt.	1
T	721-40-26	Foot Board Receptacle	2	AR	3-47	Hex Hd. Cap Screw	4
U	28-23	Retaining Ring	2	AS	11-2	Flat Washer	2
W	(page 35)	Siderail Ass'y, Left	1	AT	37-74	Hole Plug	2
X	(page 35)	Siderail Ass'y, Right	1				

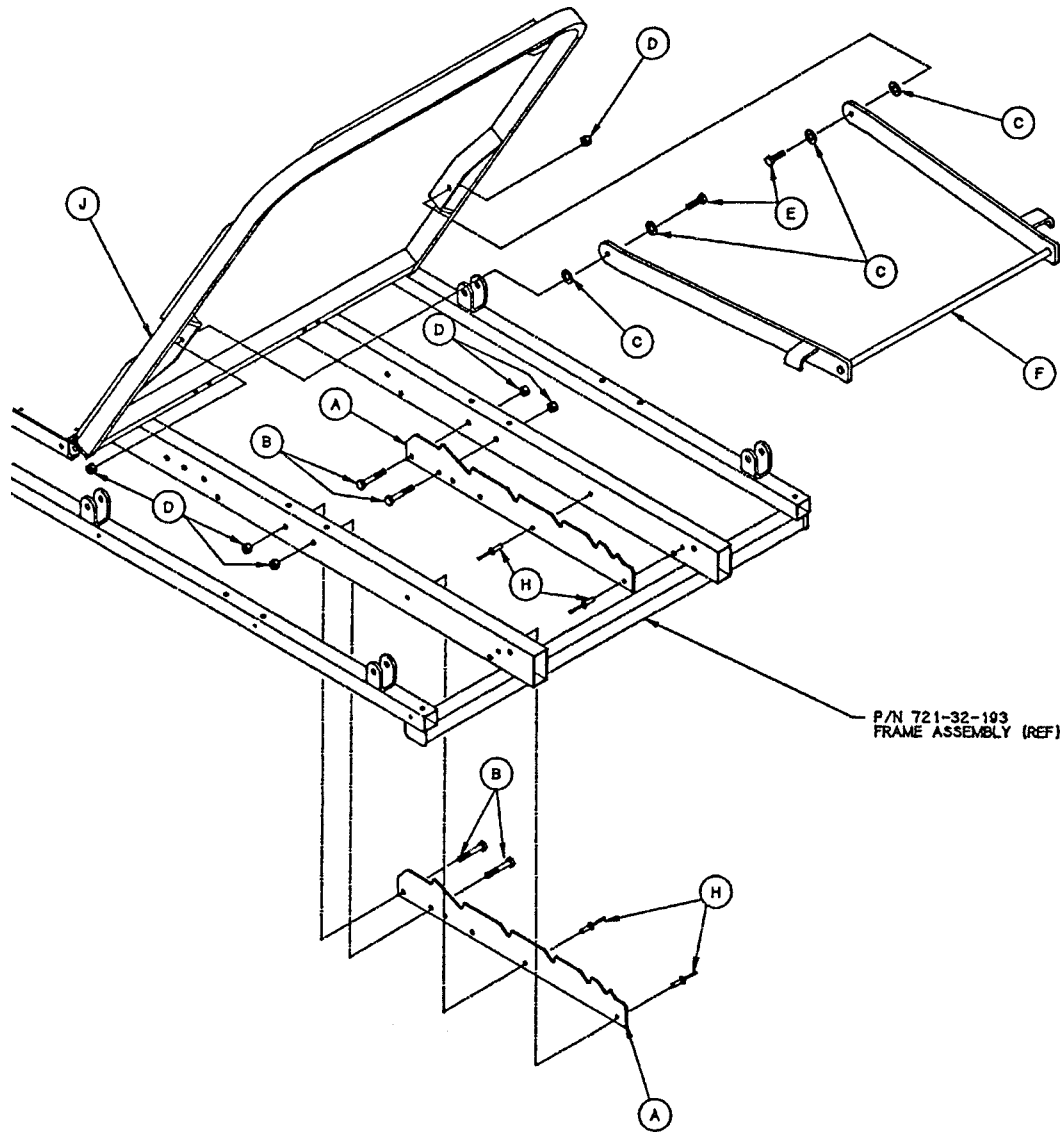


721-32-167 Manual Fowler Assembly



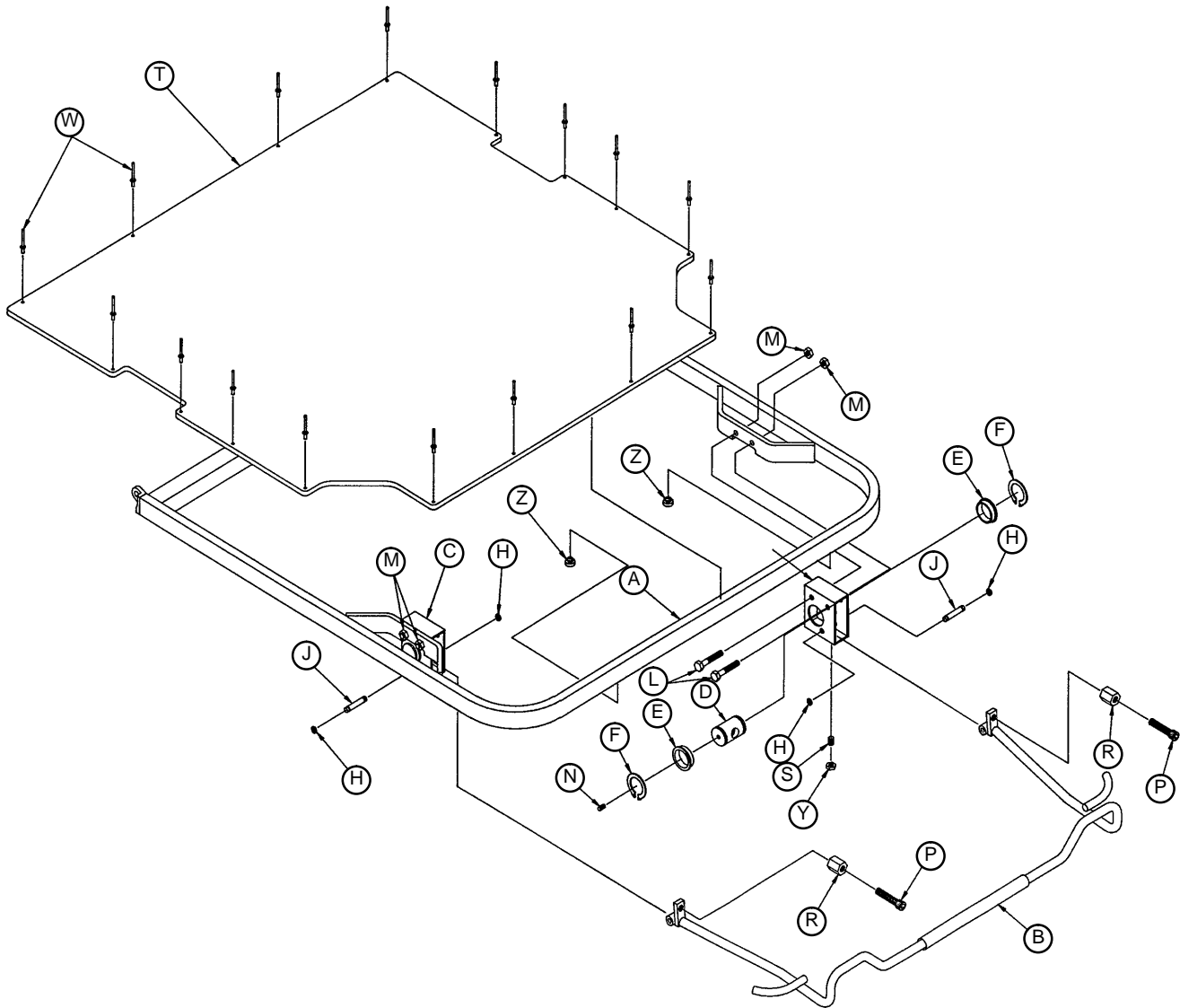
Item	Part No.	Part Name	Qty.
A	721-32-166	Fowler Weldment	1
B	721-31-50	Fowler Skin	1
C	25-101	Pop Rivet	16
D	37-52	Rubber Bumper	2

720-33-70 Manual Fowler to Litter Assembly



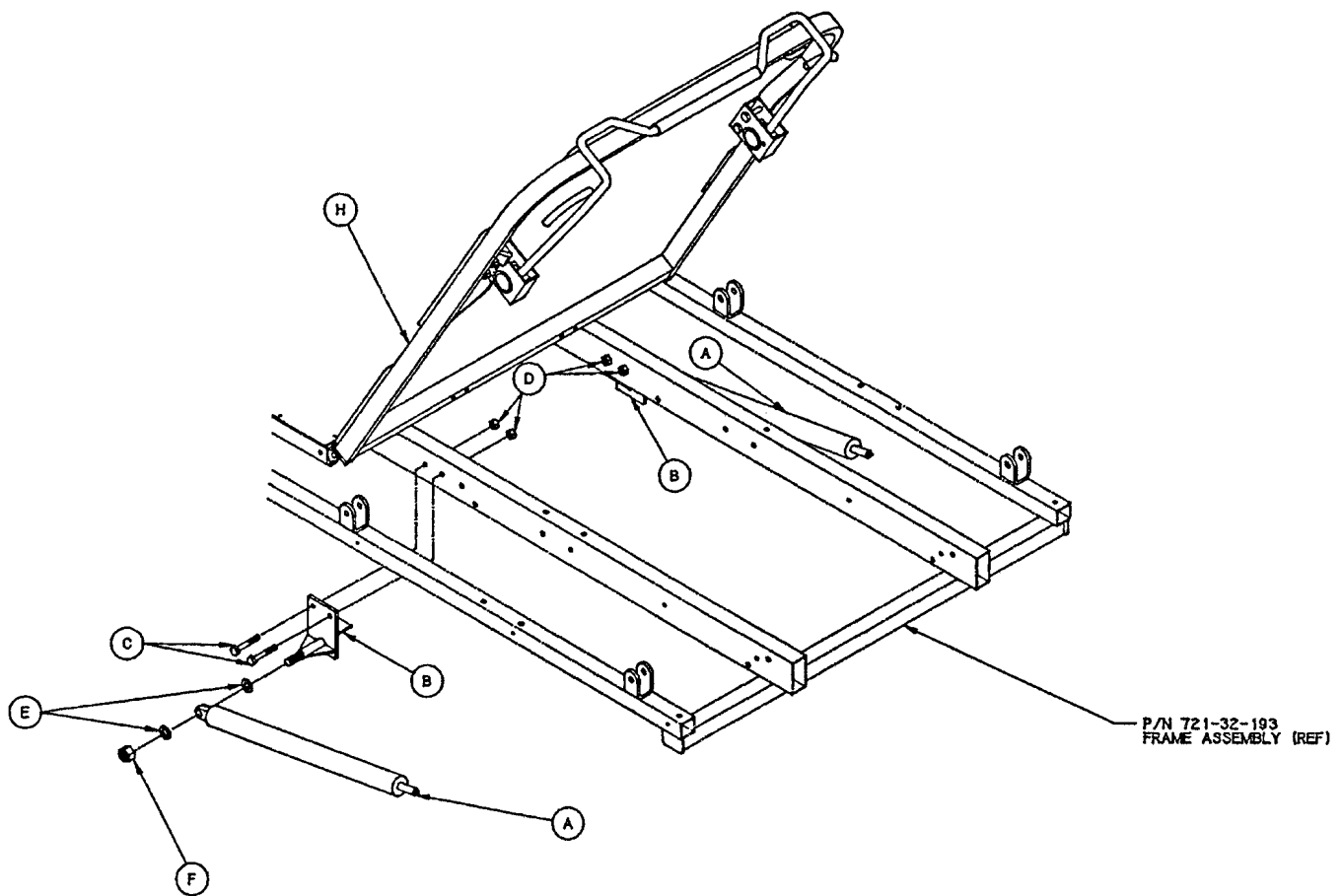
Item	Part No.	Part Name	Qty.
A	1010-32-62	Fowler Support	2
B	3-78	Hex Hd. Cap Screw	4
C	14-2	Nylon Flat Washer	4
D	16-28	Nylock Nut	6
E	3-54	Hex Hd. Cap Screw	2
F	721-32-168	Brace Assembly	1
H	25-79	Pop Rivet	4
N	(page 24)	Fowler Assembly	1

721-31-70 Pneumatic Fowler Assembly



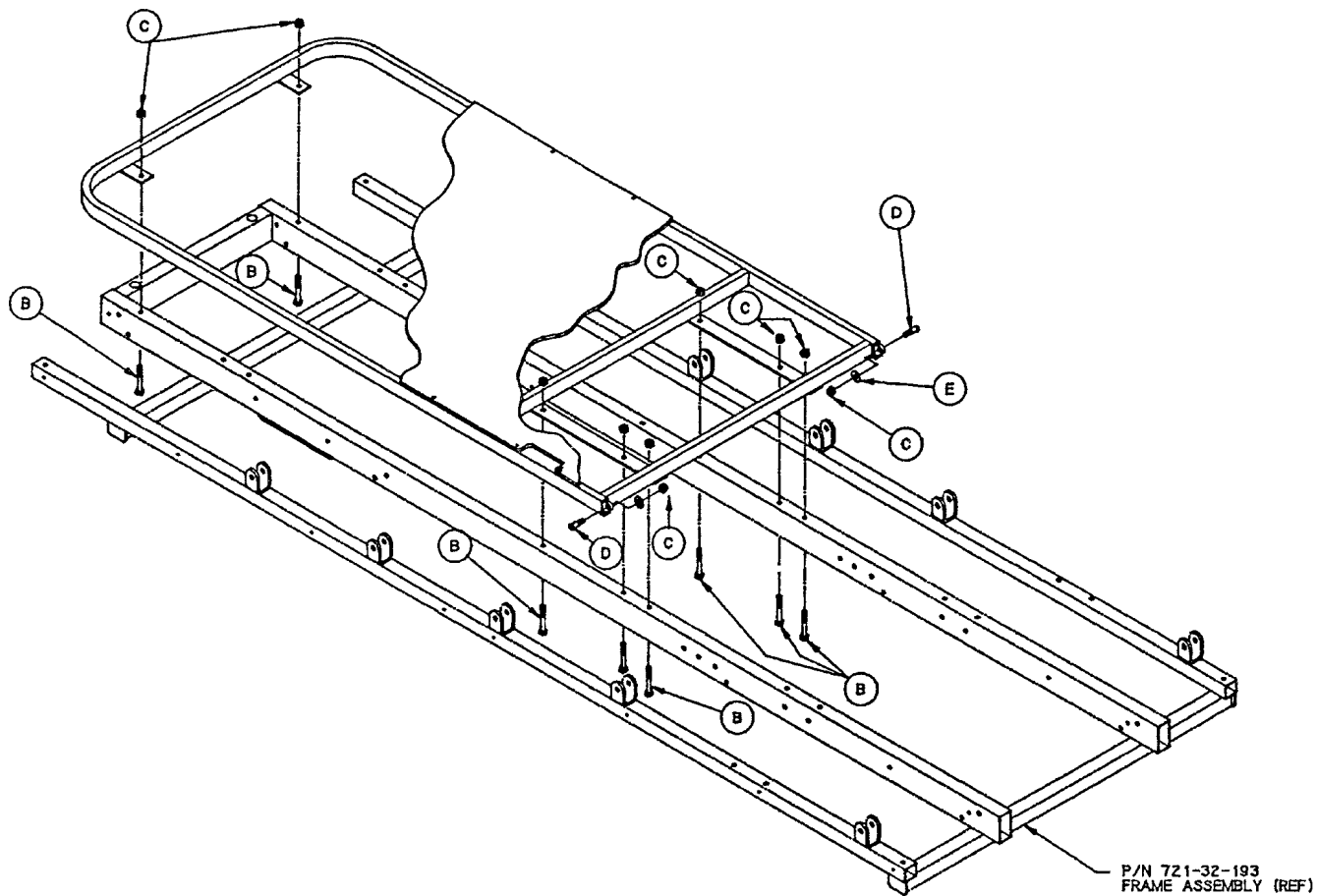
Item	Part No.	Part Name	Qty.
A	721-31-68	Fowler Weldment	1
B	721-31-69	Handle Assembly	1
C	1510-31-26	Housing	2
D	1510-31-28	Yoke	2
E	946-35-25	Liner	4
F	28-76	Retaining Ring	4
H	28-8	Retaining Ring	4
J	1510-31-27	Pivot	2
L	3-78	Hex Hd. Cap Screw	4
M	16-28	Nylock Hex Nut	4
N	21-119	Set Screw	2
P	4-54	Adjustment Screw	2
R	1510-31-41	Jam Nut/Spacer	2
S	21-104	Set Screw	2
T	721-31-50	Fowler Skin	1
W	25-99	Pop Rivet	16
Y	15-37	Jam Nut	2
Z	37-52	Rubber Bumper	2

720-35-70 Pneumatic Fowler to Frame Assembly



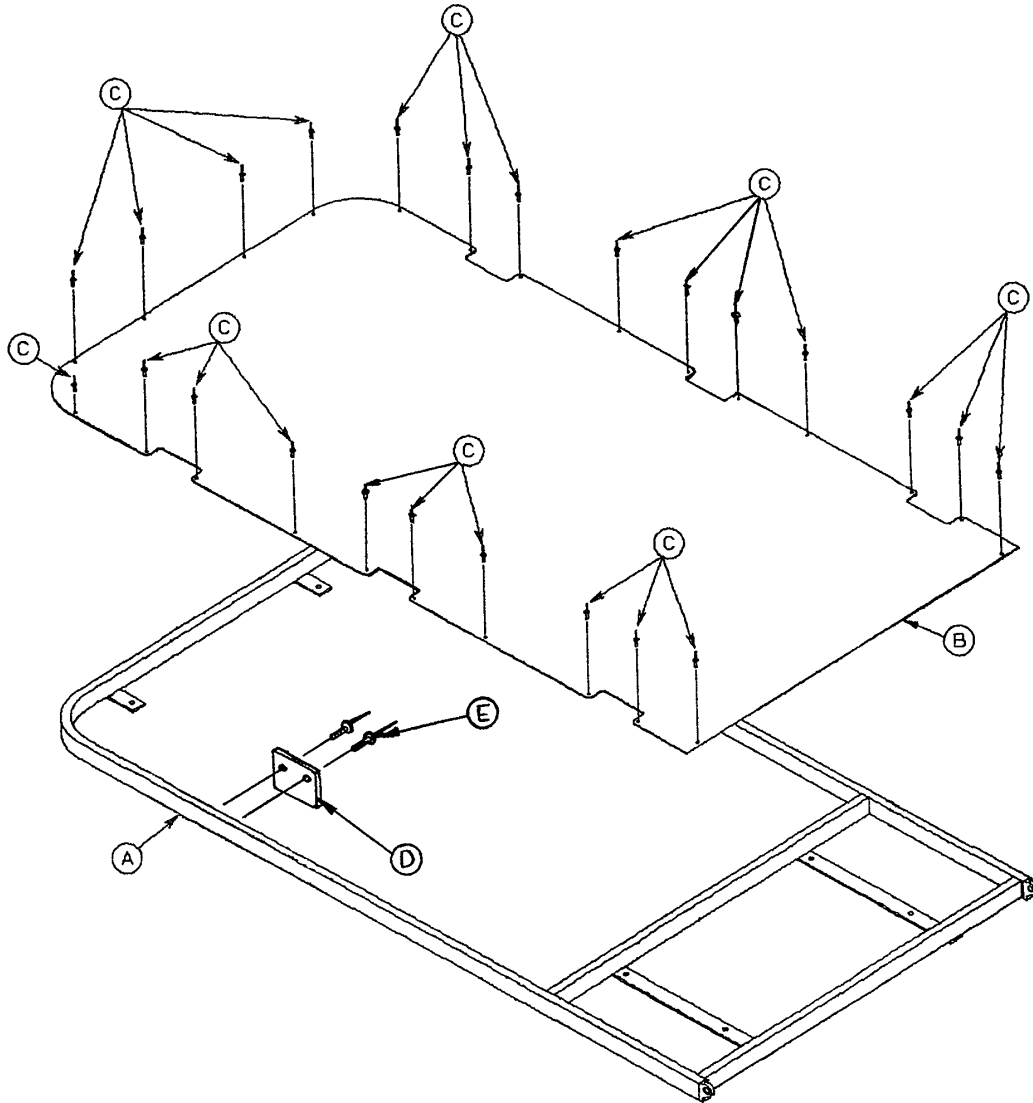
Item	Part No.	Part Name	Qty.
A	1010-31-77	Gas Cylinder	2
B	1010-31-31	Cylinder Mount	2
C	3-5	Hex Hd. Cap Screw	4
D	16-28	Nylock Nut	4
E	14-21	Nylon Flat Washer	4
F	16-35	Nylock Hex Nut	2
H	(page 26)	Pneumatic Fowler Ass'y	1

720-33-60 Stationary Foot Section Assembly



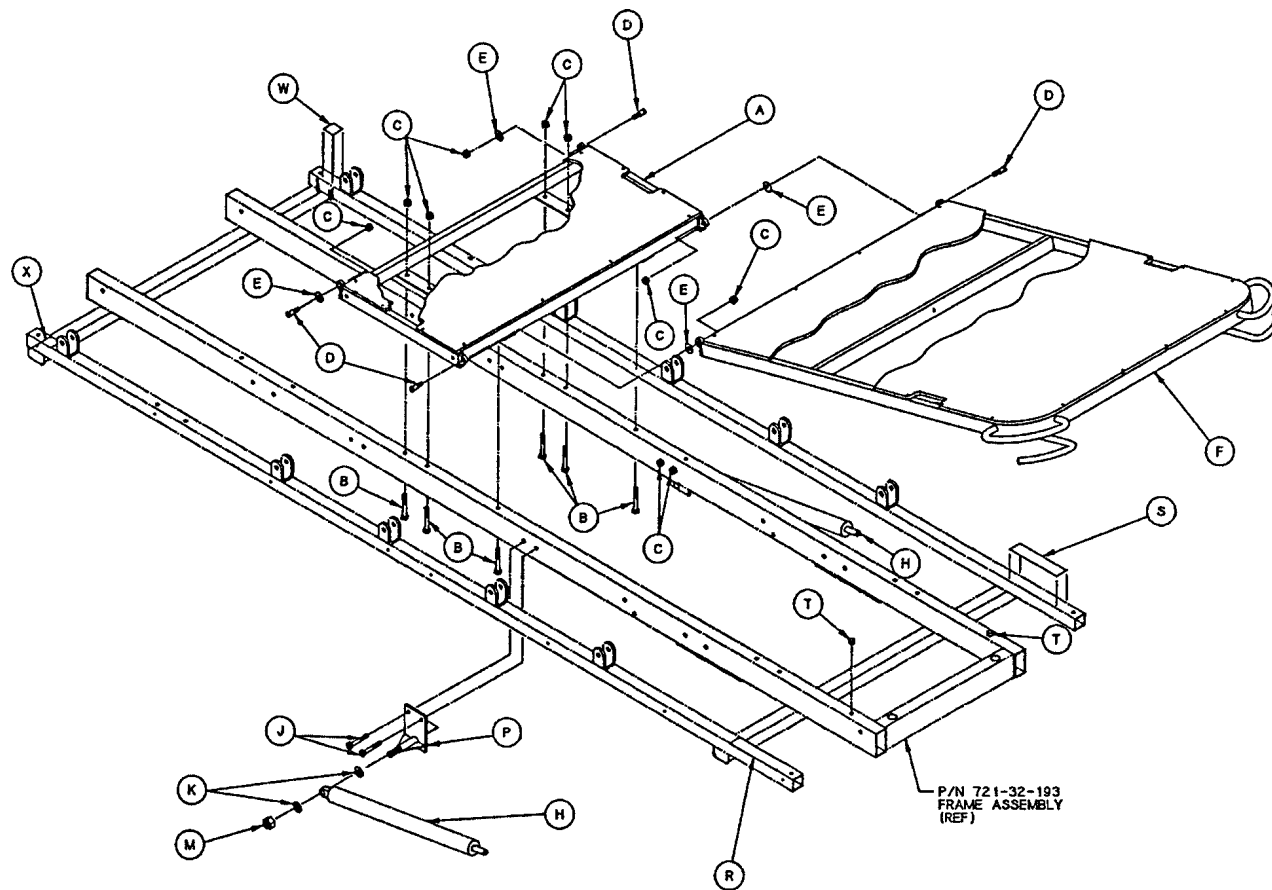
Item	Part No.	Part Name	Qty.
A	(page 29)	Stationary Foot End	1
B	3-73	Hex Hd. Cap Screw	8
C	16-28	Nylock Hex Nut	10
D	1010-32-60	Pivot Bolt	2
E	14-3	Nylon Flat Washer	2

721-32-139 Footsection Assembly



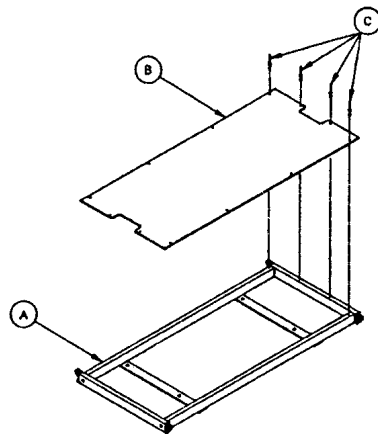
Item	Part No.	Part Name	Qty.
A	721-32-20	Footsection Weldment	1
B	721-32-128	Footsection Skin	1
C	25-101	Pop Rivet	22
D	721-24-61	Pivot Arm Rest	2
E	25-79	Pop Rivet	4

720-34-70 Trendelenburg Assembly

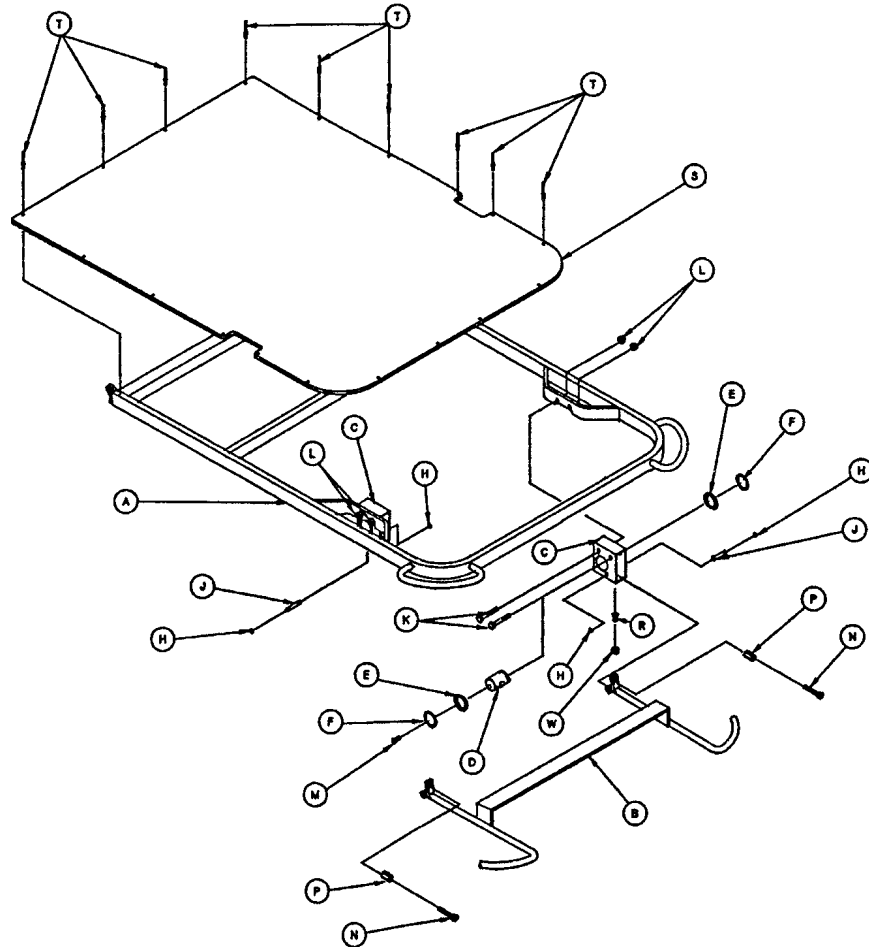


Item	Part No.	Part Name	Qty.
A	(page 31)	Midsection Preassembly	1
B	3-73	Hex Hd. Cap Screw	6
C	16-28	Nylock Hex Nut	12
D	1010-32-60	Pivot Bolt	4
E	14-3	Nylon Flat Washer	4
F	(page 31)	Footsection Assembly	1
H	1010-31-77	Gas Cylinder	2
J	3-5	Hex Hd. Cap Screw	4
K	14-21	Nylon Flat Washer	4
M	16-35	Nylock Hex Nut	2
P	1010-31-31	Cylinder Mount	2
R	721-31-101	Trend. Label, Right	1
S	721-31-100	Trend. Label, Left	1
T	37-52	Rubber Bumper	2
W	720-31-102	Head Label, Left	1
X	720-32-103	Head Label, Right	1

720-34-25 & 720-34-35 Midsection & Footsection Ass'y

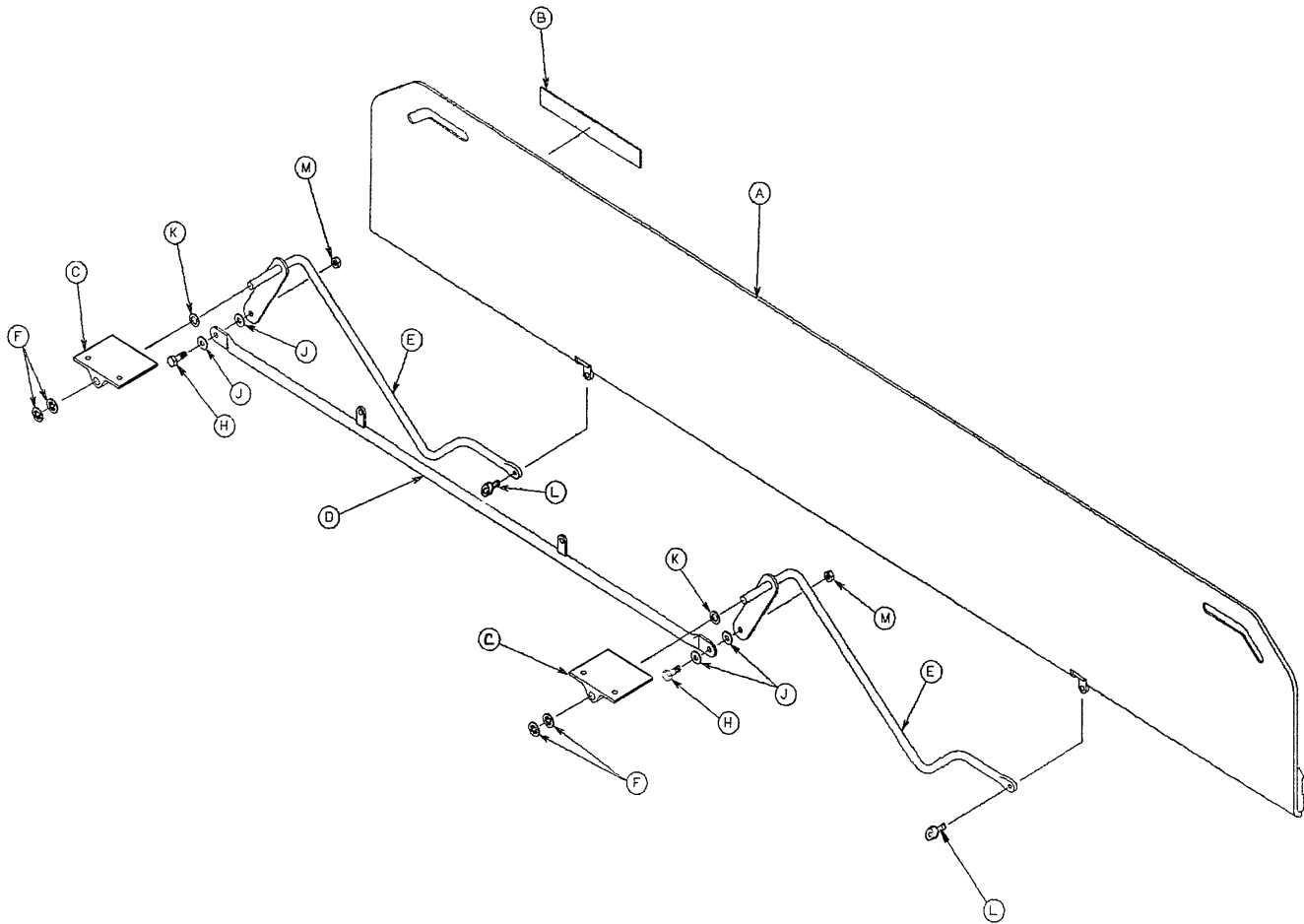


Item	Part No.	Part Name	Qty.
A	720-34-26	Midsection Ass'y	1
B	720-34-27	Midsection Skin	1
C	25-99	Pop Rivet	12



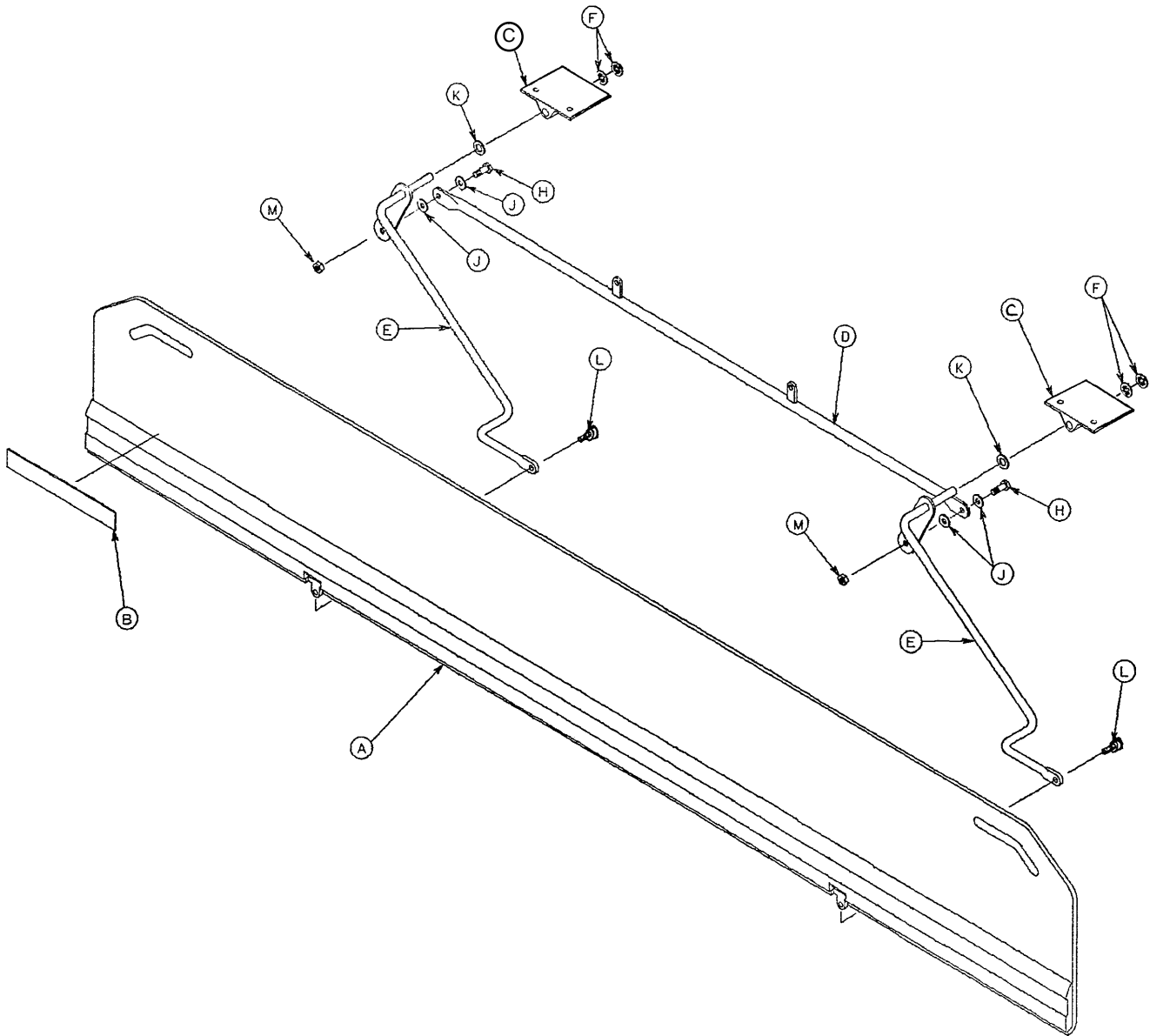
Item	Part No.	Part Name	Qty.	Item	Part No.	Part Name	Qty.
A	720-34-30	Leg Section Weldment	1	L	16-28	Nylock Hex Nut	4
B	720-34-40	Handle Assembly	1	M	21-119	Set Screw	2
C	1510-31-26	Housing	2	N	4-54	Adjustment Screw	2
D	1510-31-28	Yoke	2	P	1510-31-41	Jam Nut/Spacer	2
E	946-35-25	Liner	4	R	21-104	Set Screw	2
F	28-76	Retaining Ring	4	S	720-34-32	Leg Section Skin	1
H	28-8	Retaining Ring	4	T	25-101	Pop Rivet	20
J	1510-31-37	Pivot	2	W	15-37	Jam Nut	2
K	3-78	Hex Hd. Cap Screw	4				

721-24-57 Transfer System Assembly, Right



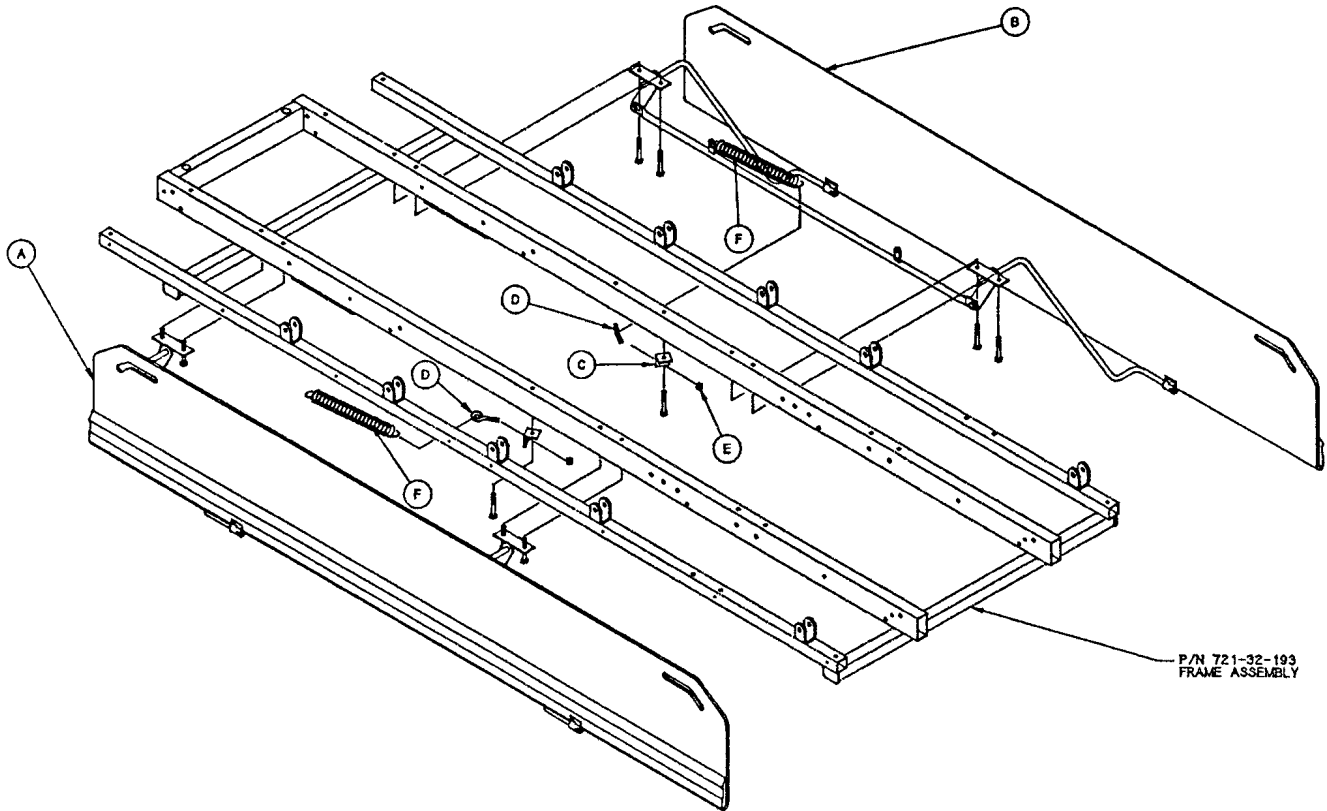
Item	Part No.	Part Name	Qty.
A	721-24-55	Transfer Board Ass'y	1
B	721-24-46	Label	1
C	721-24-60	Pivot, Long, Machined	2
D	721-24-59	Connecting Link Ass'y	1
E	721-24-49	Pivot Arm Ass'y, Right	2
F	28-93	Retaining Ring	4
H	3-50	Hex Hd. Cap Screw	2
J	11-224	Nylon Flat Washer	4
K	14-21	Nylon Flat Washer	2
L	4-156	Soc. Hd. Cap Screw	2
M	16-28	Nylock Hex Nut	2

721-24-58 Transfer System Assembly, Left



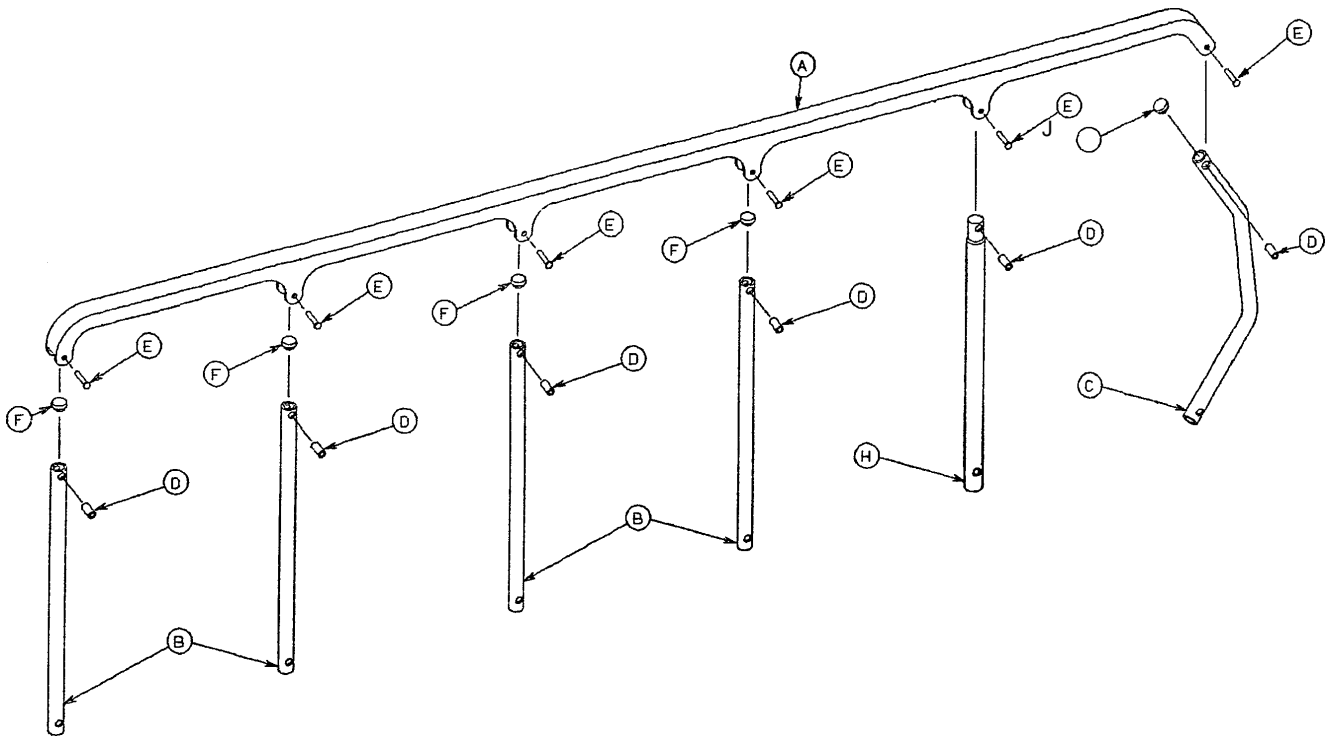
Item	Part No.	Part Name	Qty.
A	721-24-55	Transfer Board Ass'y	1
B	721-24-46	Label	1
C	721-24-60	Pivot, Long, Machined	2
D	721-24-59	Connecting Link Ass'y	1
E	721-24-34	Pivot Arm Ass'y, Left	2
F	28-93	Retaining Ring	4
H	3-50	Hex Hd. Cap Screw	2
J	11-224	Nylon Flat Washer	4
K	14-21	Nylon Flat Washer	2
L	4-156	Soc. Hd. Cap Screw	2
M	16-28	Nylock Hex Nut	2

720-33-50 Transfer System to Frame Assembly



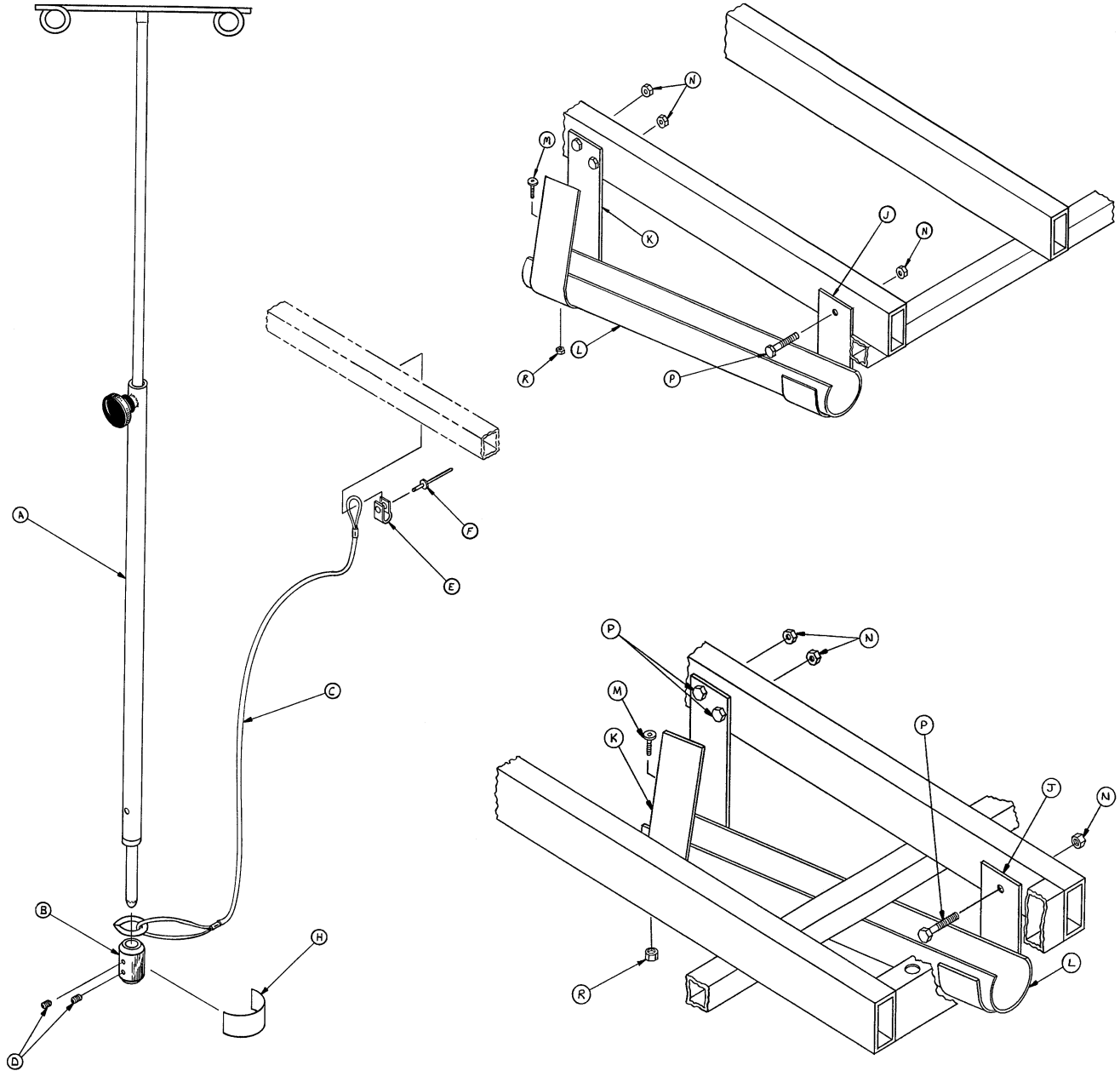
Item	Part No.	Part Name	Qty.
A	(page 33)	Transfer System Ass'y, Lt.	1
B	(page 32)	Transfer System Ass'y, Rt.	1
C	1010-24-25	Spring Retainer	2
D	10-2	Eye Bolt	2
E	16-28	Nylock Hex Nut	2
F	38-218	Tension Spring	2

721-26-96 & 721-26-97 Siderail Assembly



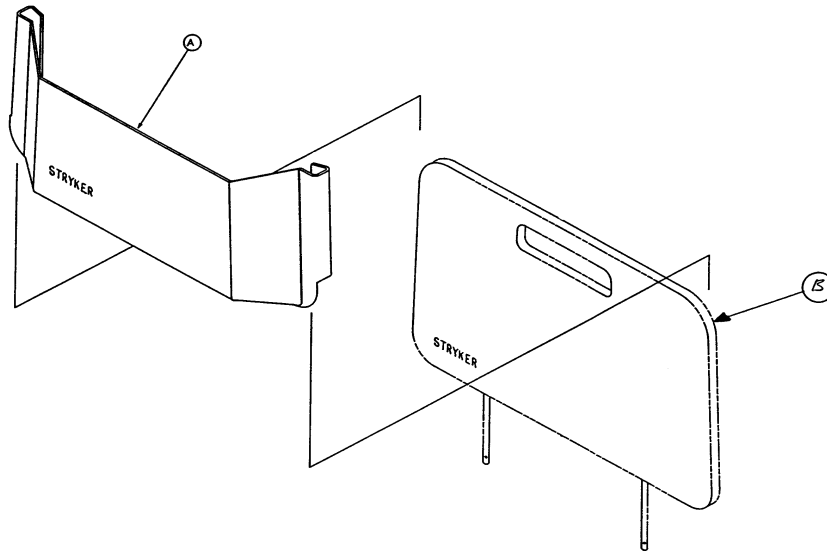
Item	Part No.	Part Name	Qty.
A	1010-26-15	Top Rail	1
B	1010-26-34	Upright	4
C	1010-26-36	Upright, Bent	1
D	1010-26-66	Spacer	6
E	25-106	Semi-Tubular Rivet	6
F	721-26-84	Round Hole Plug	4
H	1010-26-85	Upright, Latch	1
J	1010-26-12	Bent Spindle Stop	1

721-47-10 I.V. Pole Assembly



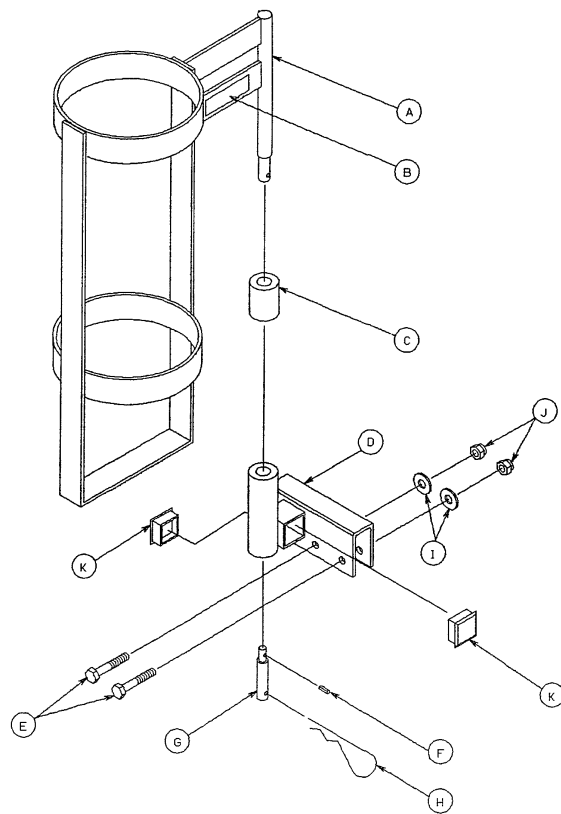
Item	Part No.	Part Name	Qty.
A	721-47-6	I.V. Holder	1
B	741-47-14	Retainer	1
C	721-47-5	Cable Assembly	1
D	21-16	Set Screw	2
E	34-22	Loop Type Clamp	1
F	25-79	Pop Rivet	1
H	721-47-12	Label	1
J	721-47-1	Hanger Bracket, Short	1
K	721-47-2	Hanger Bracket, Long	1
L	721-47-3	I.V. Pole Stowaway Sleeve	1
M	1-22	Flat Hd. Mach. Screw	2
N	16-16	Nylock Nut	2
P	3-5	Hex Hd. Mach. Screw	2
R	16-14	Nylock Nut	2

741-34* Footboard/Chartholder and 721-30 O2 Bottle Holder



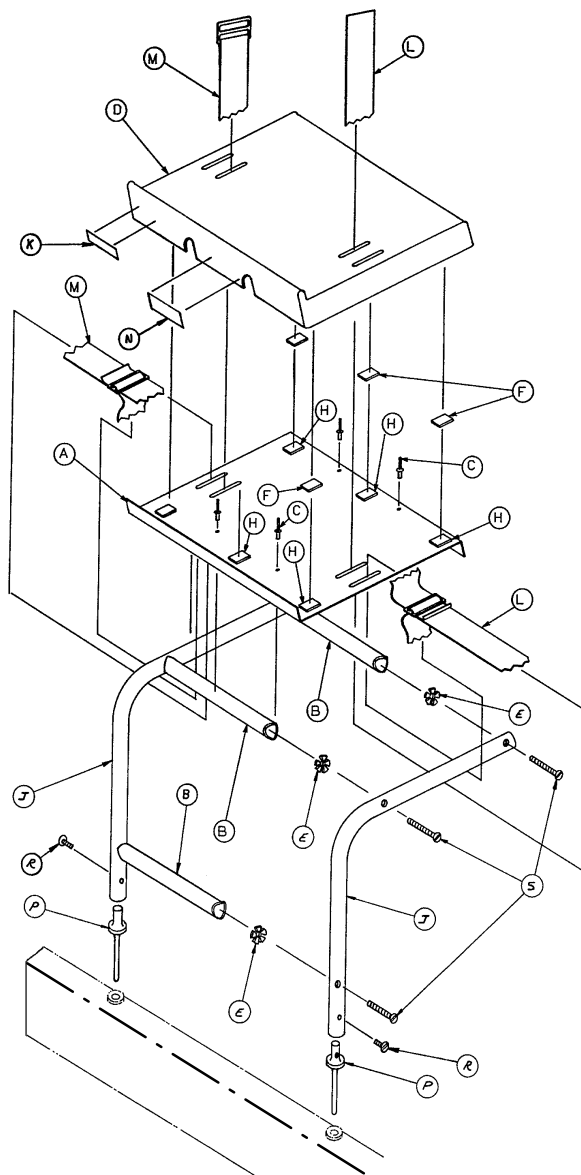
Item	Part No.	Part Name	Qty.
A	946-28-11	Chart Holder	1
B	741-29-18	Head/Foot Board	1

*Replacement Part Number 741-34-100



Item	Part No.	Part Name	Qty.
A	1010-30-11	Upright Bottle Holder	1
B	721-30-12	Specification Label	1
C	741-30-24	Nylon Stand-Off	1
D	741-30-29	Bottle Holder Bracket	1
E	3-78	Hex Hd. Cap Screw	2
F	26-3	Roll Pin	1
G	1020-30-16	Extension	1
H	27-12	Cotter Pin	1
I	11-179	Nylon Flat Washer	2
J	16-28	Nylock Nut	2
K	37-21	Hole Plug	2

741-48-14 Defibrillator Tray Assembly



Item	Part No.	Part Name	Qty.
A	946-39-4	Tray	1
B	926-39-16	Crosstube	3
C	25-55	Rivet	4
D	926-39-9	Cover	1
E	18-6	Umbrella Nut	6
F	29-8	Dual Lock	6
H	29-10	Dual Lock	6
J	946-39-3	Support Tube	2
K	741-48-12	Label	1
L	390-57-12	Long Strap	1
M	390-57-13	Short Strap	1
N	946-1-283	Label	1
P	741-48-20	Holder	2
R	2-44	Screw	2
S	2-25	Screw	6

Warranty

Limited Warranty:

Stryker Medical Division, a division of Stryker Corporation, warrants to the original purchaser that its products should be free from defects in material and workmanship for a period of one (1) year after date of delivery. Stryker's obligation under this warranty is expressly limited to supplying replacement parts and labor for, or replacing, at its option, any product which is, in the sole discretion of Stryker, found to be defective. Stryker warrants to the original purchaser that the frame and welds on its beds will be free from structural defects for as long as the original purchaser owns the bed. If requested by Stryker, products or parts for which a warranty claim is made shall be returned prepaid to Stryker's factory. Any improper use or any alteration or repair by others in such manner as in Stryker's judgement affects the product materially and adversely shall void this warranty. No employee or representative of Stryker is authorized to change this warranty in any way.

This statement constitutes Stryker's entire warranty with respect to the aforesaid equipment. STRYKER MAKES NO OTHER WARRANTY OR REPRESENTATION, EITHER EXPRESSED OR IMPLIED, EXCEPT AS SET FORTH HEREIN. THERE IS NO WARRANTY OF MERCHANTABILITY AND THERE ARE NO WARRANTIES OF FITNESS FOR ANY PARTICULAR PURPOSE. IN NO EVENT SHALL STRYKER BE LIABLE HEREUNDER FOR INCIDENTAL OR CONSEQUENTIAL DAMAGES ARISING FROM OR IN ANY MANNER RELATED TO SALES OR USE OF ANY SUCH EQUIPMENT.

To Obtain Parts and Service:

Stryker products are supported by a nationwide network of dedicated Stryker Field Service Representatives. These representatives are factory trained, available locally, and carry a substantial spare parts inventory to minimize repair time. Simply call your local representative, or call Stryker Customer Service at (800) 327-0770.

Supplemental Warranty Coverage:

Stryker has developed a comprehensive program of extended warranty options designed to keep your equipment operating at peak performance at the same time it eliminates unexpected costs. We recommend that these programs be activated *before* the expiration of the new product warranty to eliminate the potential of additional equipment upgrade charges. Stryker offers the following Supplemental Warranties:

Extended (Parts and Labor)

- All replacement parts (excluding mattresses and consumable items)
- Labor and travel for *all* scheduled and unscheduled calls
- Annual Preventive Maintenance Inspections and repairs
- JCAHO paperwork for preventive maintenance
- Priority Emergency Service

Standard (Labor Only):

- Labor and travel for *all* scheduled and unscheduled calls
- Biannual Preventive Maintenance Inspections and repairs
- JCAHO paperwork for preventive maintenance
- Priority Emergency Service

Basic (Parts Only):

- All replacement parts (excluding mattresses and consumable items)
- Priority Emergency Service

Please call your local representative, or call (800) 327-0770 for further information

Warranty

Return Authorization:

Merchandise cannot be returned without approval from the Stryker Customer Service Department. An authorization number will be provided which must be printed on the returned merchandise. Stryker reserves the right to charge shipping and restocking fees on returned items.

SPECIAL, MODIFIED, OR DISCONTINUED ITEMS NOT SUBJECT TO RETURN.

Damaged Merchandise:

ICC Regulations require that claims for damaged merchandise must be made with the carrier within fifteen (15) days of receipt of merchandise. **DO NOT ACCEPT DAMAGED SHIPMENTS UNLESS SUCH DAMAGE IS NOTED ON THE DELIVERY RECEIPT AT THE TIME OF RECEIPT.** Upon prompt notification, Stryker will file a freight claim with the appropriate carrier for damages incurred. Claim will be limited in amount to the actual replacement cost. In the event that this information is not received by Stryker within the fifteen (15) day period following the delivery of the merchandise, or the damage was not noted on the delivery receipt at the time of receipt, the customer will be responsible for payment of the original invoice in full.

Claims for any short shipment must be made within thirty (30) days of invoice.



6300 Sprinkle Road, Kalamazoo, MI 49001-9799

(800) 327-0770

DH 6/92 720-100-25 REV__