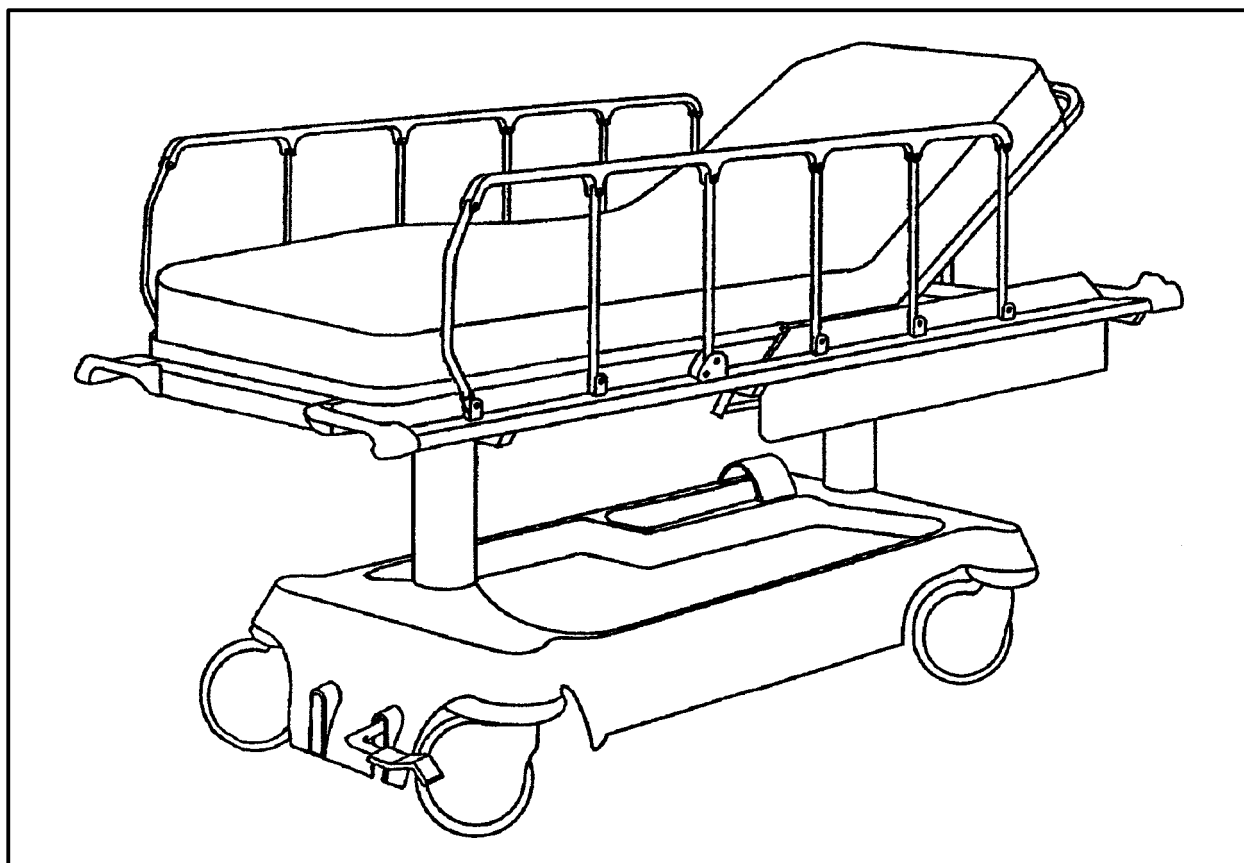

IMPORTANT
File in your
maintenance
records

stryker[®]
Medical



Renaissance Series

720 Transport Stretcher

MAINTENANCE MANUAL

For Parts or Technical Assistance
1-800-327-0770

Table of Contents

Introduction	
Specifications	2
Warning / Caution / Note Definition	2
Preventative Maintenance	3
Service Information	
Pneumatic Fowler Adjustment	4
Siderail Latch Adjustment	5
Transfer Board Counterbalance Adjustment	5
Pedal Linkage Adjustment	6
Caster Assembly Replacement	7
Caster Cover Installation And Removal	8
Stretcher Height Adjustment	9
Brake Adjustment	10
Base Lubrication	10
Assembly Drawings and Parts Lists	
<i>End Control Base Assembly (with Wheels)</i>	12, 13
Brake Adjuster Assembly	14
Brake Cam Assembly	15
Brake Pedal Assembly, Head and Foot End	16
Caster Assembly with Steerlock	17
Caster and Caster Cover Replacement Kits	18
Fifth Wheel Assembly	19
<i>Stretcher Base Assembly</i>	20, 21
Base Labeling Assembly	22
Stretcher Graphics	23
<i>Litter Assembly</i>	24, 25
Pneumatic Fowler Assembly	26–26.3
Manual Fowler Assembly	27
Short Transfer System to Frame Assembly	28
Short Transfer System Assembly, Left	29
Short Transfer System Assembly, Right	30
Long Transfer System to Frame Assembly	31
Long Transfer System Assembly, Left	32
Long Transfer System Assembly, Right	33
Siderail Assembly, Right & Left	34
2–Stage I.V. Pole Assembly, Foot & Head	35
2–Stage I.V. Pole Assembly	36
3–Stage I.V. Pole Assembly, Head & Foot	37
3–Stage I.V. Pole Assembly	38
2nd Stage Assembly	39
3rd Stage Assembly	40
Tethered I.V. Pole Mounting Assembly	41
Tethered I.V. Pole Assembly	42
Tethered I.V. Pole Trough Assembly	43
C–Spine Cassette Holder Assembly	44
C–Spine Support Pole Assembly	45
C–Spine Storage Bracket Assembly	46
Defibrillator Tray Assembly	47
Foot Board/Chartholder Assembly	48
Upright Oxygen Bottle Holder Assembly	48
Replacement Parts	49
Warranty	
Obtaining Parts and Service	50
Supplemental Warranty Coverage	50
Return Authorization	51
Freight Damage Claims	51

Introduction

INTRODUCTION

This manual is designed to assist you with the operation and maintenance of the 720 Transport Stretcher. Read it thoroughly before using the equipment or beginning any maintenance on it.

NOTE

This manual applies only to 720 stretchers built after 1993, with serial numbers after 94010000. For 720 stretchers built before 1994, use manual part number 720-100-25.

SPECIFICATIONS

Maximum Weight Capacity	500 pounds
Overall Bed Length/Width	81", 30"
Fixed Height Options	28", 30", 32"
Fowler Angle	0 to 90 degrees

Stryker reserves the right to change specifications without notice.

WARNING / CAUTION / NOTE DEFINITION

The words WARNING, CAUTION and NOTE carry special meanings and should be carefully reviewed.

WARNING

The personal safety of the patient or user may be involved. Disregarding this information could result in injury to the patient or user.

CAUTION

These instructions point out special procedures or precautions that must be followed to avoid damaging the equipment.

NOTE

This provides special information to make maintenance easier or important instructions clearer.

WARNING

Patients should be discouraged from sitting directly on the ends of the stretcher. Excessive weight will cause the litter surface to tip up, possibly causing patient injury. Always apply the caster brakes when a patient is getting on or off the stretcher. Push on the stretcher to ensure the brakes are securely locked. Always engage the brakes unless the stretcher is being moved. Injury could result if the stretcher moves while a patient is getting on or off the stretcher.

Preventative Maintenance

CHECKLIST (PERFORM A MINIMUM OF TWICE A YEAR)

- _____ All fasteners secure (reference all assembly prints)
- _____ Siderails move and latch properly (page 5)
- _____ Engage brake pedal and push on the stretcher to ensure all casters lock securely (page 10)
- _____ Steer function working properly
- _____ All casters secure and swivel properly
- _____ Body restraints working properly
- _____ I.V. pole intact and operating properly
- _____ Oxygen bottle holder intact and operating properly (page 48)
- _____ Fowler operates and latches properly (pneumatic: page 4, manual: page 27)
- _____ No rips or cracks in mattress cover
- _____ Transfer boards intact and operating properly (page 5)
- _____ Ground chain intact
- _____ Lubricate where required, including the brake adjuster assembly and brake cam (page 10)
- _____ Accessories and mounting hardware in good condition and working properly

Serial No. _____

Completed By: _____ Date: _____

Cleaning

Hand wash all surfaces of the stretcher with warm water and mild detergent. Dry thoroughly. DO NOT STEAM CLEAN, PRESSURE WASH, HOSE OFF OR ULTRASONICALLY CLEAN. Using these methods of cleaning is **not** recommended and may void this product's warranty.

Clean Velcro **AFTER EACH USE**. Saturate Velcro with disinfectant and allow disinfectant to evaporate. (Appropriate disinfectant for nylon Velcro should be determined by the hospital.)

In general, when used in those concentrations recommended by the manufacturer, either phenolic type or quaternary type disinfectants can be used. Iodophor type disinfectants are not recommended for use. The following products have been tested and have been found not to have a harmful effect WHEN USED IN ACCORDANCE WITH MANUFACTURERS RECOMMENDED DILUTION.*

TRADE NAME	DISINFECTANT TYPE	MANUFACTURER	*MANUFACTURER'S RECOMMENDED DILUTION
A33	Quaternary	Airwick (Professional Products Division)	2 ounces/gallon
A33 (dry)	Quaternary	Airwick (Professional Products Division)	1/2 ounce/gallon
Beaucoup	Phenolic	Huntington Laboratories	1 ounce/gallon
Blue Chip	Quaternary	S.C. Johnson	2 ounces/gallon
Elimstaph	Quaternary	Walter G. Legge	1 ounce/gallon
Franklin Phenomysan F2500	Phenolic	Purex Corporation	1 1/4 ounce/gallon
Franklin Sentinel	Quaternary	Purex Corporation	2 ounces/gallon
Galahad	Phenolic	Puritan Churchill Chemical Company	1 ounce/gallon
Hi-Tor	Quaternary	Huntington Laboratories	1/2 ounce/gallon
LPH	Phenolic	Vestal Laboratories	1/2 ounce/gallon
Matar	Phenolic	Huntington Laboratories	1/2 ounce/gallon
Omega	Quaternary	Airwick (Professional Products Division)	1/2 ounce/gallon
Quanto	Quaternary	Huntington Laboratories	1 ounce/gallon
Sanikleen	Quaternary	West Chemical Products	2 ounces/ gallon
Sanimaster II	Quaternary	Service Master	1 ounce/gallon
Vesphene	Phenolic	Vestal Laboratories	1 1/4 ounce/ gallon

Quaternary Germicidal Disinfectants, used as directed, and/or Chlorine Bleach products, typically 5.25% Sodium Hypochlorite in dilutions ranging between 1 part bleach to 100 parts water, and 2 parts bleach to 100 parts water are not considered mild detergents. These products are corrosive in nature and may cause damage to your stretcher if used improperly. If these types of products are used to clean Stryker patient handling equipment, measures must be taken to insure the stretchers are rinsed with clean water and thoroughly dried following cleaning. Failure to properly rinse and dry the stretchers will leave a corrosive residue on the surface of the stretcher, possibly causing premature corrosion of critical components. Failure to follow the above directions when using these types of cleaners may void this product's warranty.

REMOVAL OF IODINE COMPOUNDS

This solution may be used to remove iodine stains from mattress cover and foam footrest pad surfaces.

1. Use a solution of 1–2 tablespoons Sodium Thiosulfate in a pint of warm water to clean the stained area. Clean as soon as possible after staining occurs. If stains are not immediately removed, allow solution to soak or stand on the surface.
2. Rinse surfaces which have been exposed to the solution in clear water before returning bed to service.

Notes

Service Information

PNEUMATIC FOWLER ADJUSTMENT

Required Tools:

5/32" Hex Allen Wrench 1/2" Open End Wrench

Adjustment Procedure:

1. For part identification, refer to page 26.2, drawing 721–231–120.
2. For easier access, move Fowler to 75° or higher.
3. Using a 1/2" open end wrench, loosen the nuts (item K) in the actuator arms on the end of the trip bar (F).
4. To adjust the Fowler, use a 5/32" hex Allen wrench to turn the Allen screws (item N) 1 to 2 turns counter-clockwise if the Fowler will not move or 1 to 2 turns clockwise if the Fowler will not hold its position.
5. Retighten the nuts. Be sure the Fowler will travel from flat to 90° and down again and will hold its position when weight is applied before returning the stretcher to service.

Service Information

SIDERAIL LATCH ADJUSTMENT

Required Tools:

1/8 Hex Allen Wrench

WARNING

The siderail latch adjustment is pre-set at the factory, and should not normally need adjusting. If adjustment must be done it is important to follow the procedure below. If it is not done properly, injury could occur.

Adjustment Procedure:

1. Using a 1/8" hex Allen wrench, adjust the Allen screw located on the latch assembly opposite the latch. Turning the screw clockwise will **DECREASE** the amount of "play" in the latch. Turning counterclockwise will **INCREASE** the amount. The amount of "play" in the siderail, when in full up engaged position, should be approximately 1/8 to 3/16 inches.

CAUTION

Too much "play" when the siderail is in the full up engaged position will give the siderail the appearance of being unstable and could also cause premature wearing of the latch system. Too little "play" will obstruct the latch and keep it from engaging completely in the full up position, which may cause damage to the latch and/or injury to the patient or user.

TRANSFER BOARD COUNTERBALANCE ADJUSTMENT

Required Tools:

7/16 Open End Wrench

Adjustment Procedure:

1. Raise the transfer board to the full up position.
2. Unhook the extension spring at the eye bolt.
3. Using a 7/16 open end wrench, loosen the jam nut at the eye bolt and adjust the eye bolt to the desired position.
4. Tighten the jam nut.
5. Hook the extension spring to the eye bolt.
6. Allow the transfer board to lower on its own.
7. Repeat steps 1–7 until the desired counterbalance is achieved.

Service Information

PEDAL LINKAGE ADJUSTMENT

Required Tools:

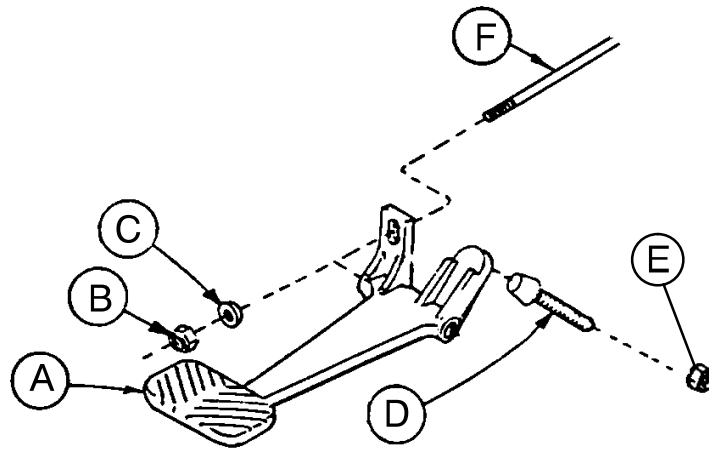
7/16 Open End Wrench

1/2 Open End Wrench

(2) Wooden Blocks (10 – 12 inches in length)

Adjustment Procedure:

1. Pump the litter up to full height.
2. Lift the base hood, separating the hood from the base frame. Using the wooden blocks, support the base hood.
3. The descent pedals should be level with each other and there should be approximately 4 inches between the floor and the bottom of the pedal. To raise the pedal height, use a 1/2 open end wrench to loosen the hex jam nut (E). Using your hand, turn the screw (D) into the bracket. To lower the pedal height, loosen the screw. Tighten the hex jam nut (E) after the correct height is achieved.
4. Once the pedals are level, the release rod can be adjusted. Using a 7/16 wrench, turn nut (B) clockwise to shorten the release length and counterclockwise to increase the length.
5. Depress the pedal and be sure the jack descent is triggered when the pedal is approximately one inch from the floor. The descent should stop when the pedal is released and the jack height should hold. Repeat the above procedures for the descent pedal at the other end of the bed.
6. After adjusting each descent pedal individually, depress both pedals at the same time. Both jacks should start descending when the pedals are approximately one inch from the floor. The foot end should lower slightly faster than the head end. If it does not, see procedure for adjusting the jack descent rate.
7. Remove the wooden blocks supporting the base hood and secure the hood to the base frame.



Service Information

CASTER ASSEMBLY REPLACEMENT

Required Tools:

1/8 Roll Pin Punch

Flat Punch (any size larger than 1/8)

Needle Nose Pliers

3/4 Inch Wrench

1 Inch Wrench

Drill with 1/8 inch Drill Bit

Hammer

Floor Jack

(2) Wooden Blocks (10 – 12 inches in length)

Torque Wrench (w/ Ft. Lbs. Adjust.)

Replacement Procedure:

1. Pump the litter up to full height.
2. Lift the base hood, separating the hood from the base frame. Using the wooden blocks, support the base hood.
3. Using a 1/8 roll pin punch and hammer, remove roll pin located in center of lug nut holding wheel assembly to base frame.
4. Carefully remove plastic wheel covers.
5. Using a floor jack, lift base frame approximately 4 inches off the ground.
6. While holding cap screw with a 3/4 inch wrench, turn lug nut with a 1 inch wrench to loosen wheel assembly from base frame. Remove wheel.
7. Install the new wheel assembly with new lug nut and tighten down to 60 – 65 foot-pounds torque.

WARNING

Never reuse the old lug nut, cap screw or roll pin once removed from base frame.

8. Lower the floor jack and set aside to be used, if needed, with another wheel.

9. Drill a 1/8 hole in center of lug nut, going completely through the lug nut.

CAUTION

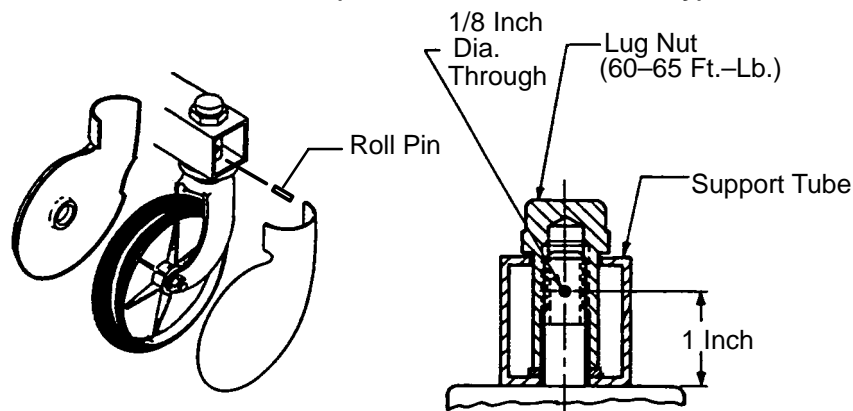
Be careful not to "oblong" the hole in the lug nut when drilling.

10. Using needle nose pliers, hold on to roll pin and tap into place. Finish driving roll pin with a flat head punch and a hammer until flush with the lug nut.

11. Install plastic wheel covers onto wheel.

12. Remove the wooden blocks supporting the base hood and secure the hood to the base frame.

*Replacement Part Number 715-100-127 (Caster and Cover Assembly)



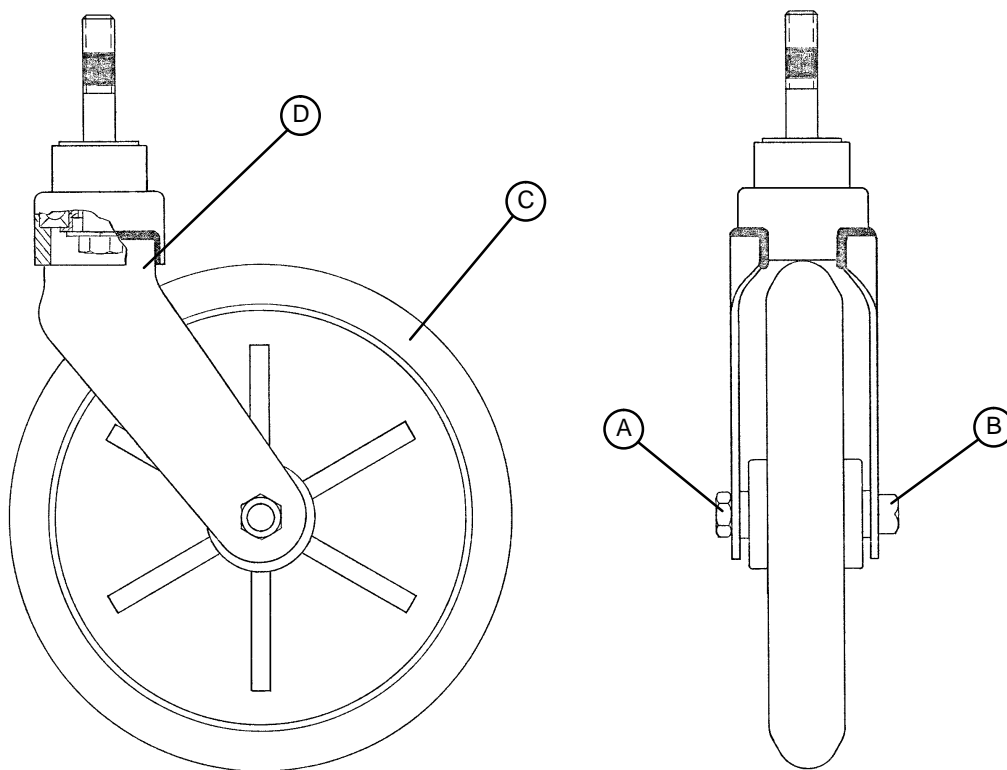
Service Information

CASTER MAINTENANCE

Required Tools:

5/8" Wrench
11/16" Wrench

Maintenance Procedure:



Remove the plastic caster cover (see page 8).

Using the 5/8" wrench and the 11/16" wrench, remove the centerlock nut (item A) from the through bolt (item B) for the caster wheel.

Support the corner of the stretcher where the wheel is being removed and remove the through bolt (item B) and the molded wheel (item C) .

Clean the through bolt, molded wheel, and the inside of the caster horn (item D) removing any dirt and debris. Ensure the bearings in the molded wheel spin freely and easily.

Replace the molded wheel and the through bolt.

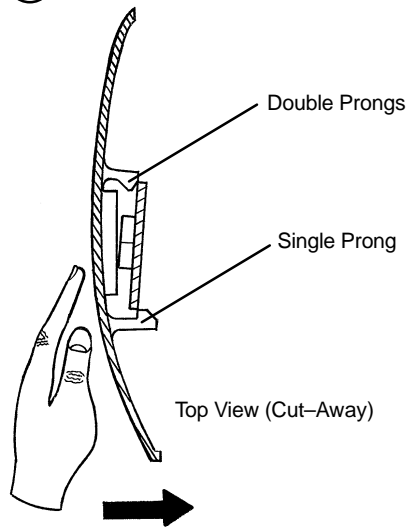
Replace the centerlock nut on the through bolt and use the 5/8" and 11/16" wrenches to tighten it securely.

Notes

Service Information

CASTER COVER INSTALLATION AND REMOVAL

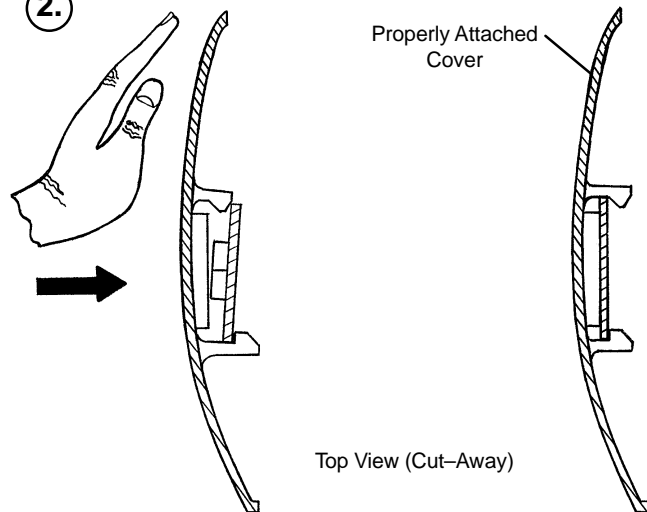
1.



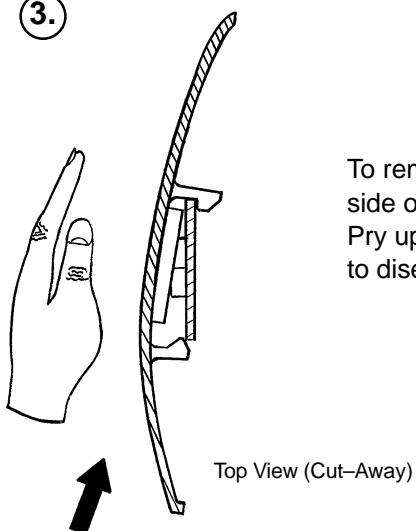
Looking through the larger of the two side cut-outs, align cover with axle nut or bolt head, as shown. Push down on the opposite side of the cover until single prong engages with caster horn.

Push with palm on cover until double prongs engage.

2.



3.



To remove wheel cover, insert large screwdriver into cut-out in side of wheel cover and into the space between the double prongs. Pry up cover to disengage double prongs and push sharply upward to disengage single prong.

Service Information

STRETCHER HEIGHT ADJUSTMENT

NOTE

The 720 Transport Stretcher is available in three "fixed" heights: 28", 30", and 32". The pre-set stretcher height was chosen at the time of purchase. Follow the procedure below to change the stretcher height. Refer to page 20 & 21 for part reference.

Required Tools:

1/2" Open End Wrench

1/2" Socket with Ratchet

Adjustment Procedure:

WARNING

Do not attempt the following adjustment with a patient on the stretcher or injury could occur.

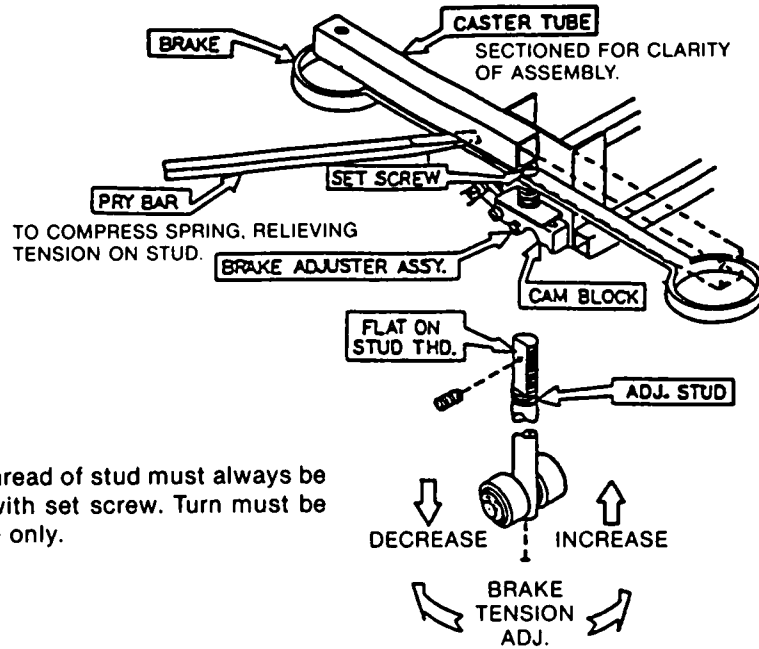
1. Using a 1/2" open end wrench and 1/2" socket with ratchet, loosen the 2 bolts (F) and 2 self-locking nuts (J) located on the head and foot end upper tower assemblies (B).
2. Remove only the 4 self-locking nuts (J).
3. Lift the litter top from both ends simultaneously only enough to relieve the pressure on the 4 bolts (F) and remove the bolts and 8 washers (L).
4. Adjust to the desired height by aligning the appropriate holes located in both the head and foot end upper and lower tower assemblies.
5. Reinstall the 4 bolts, 8 washers and 4 self-locking nuts and tighten securely.

Service Information

BRAKE ADJUSTMENT

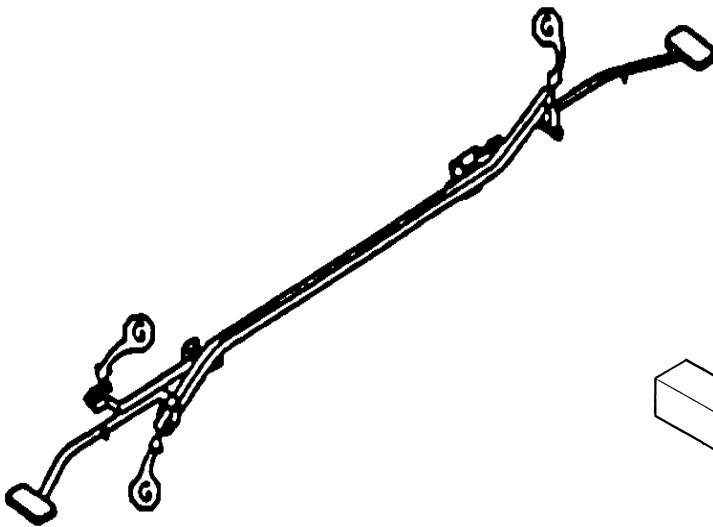
Required Tools:

- 3/32" Hex Allen Wrench
- Pry Bar
- Thread "Locktite"

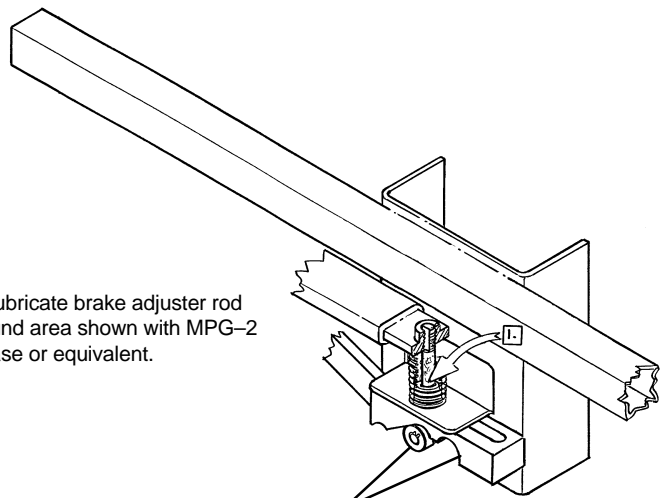


Flat on thread of stud must always be aligned with set screw. Turn must be full circle only.

BASE LUBRICATION



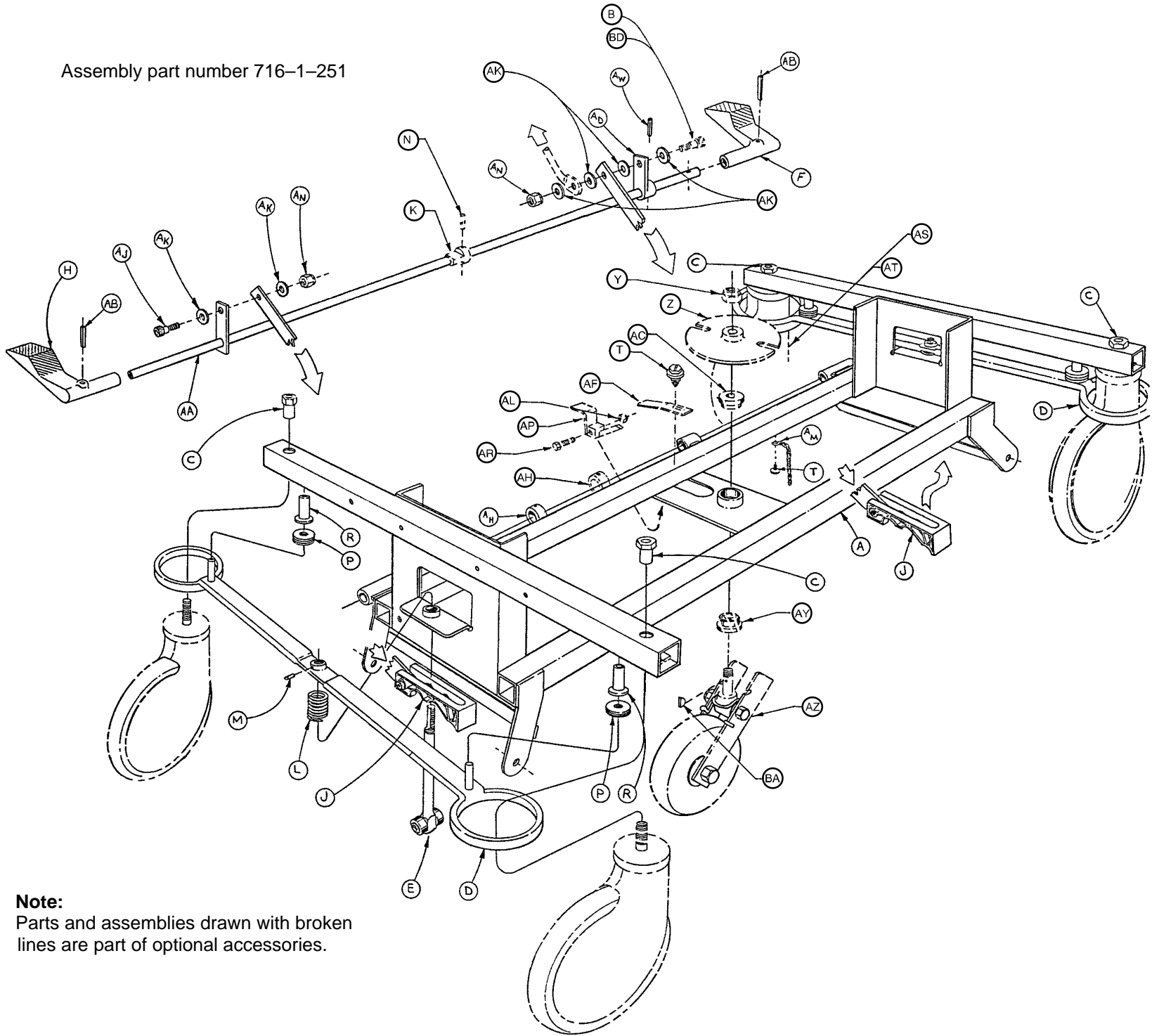
1. Lubricate brake adjuster rod around area shown with MPG-2 grease or equivalent.



Do not grease area shown.

Notes

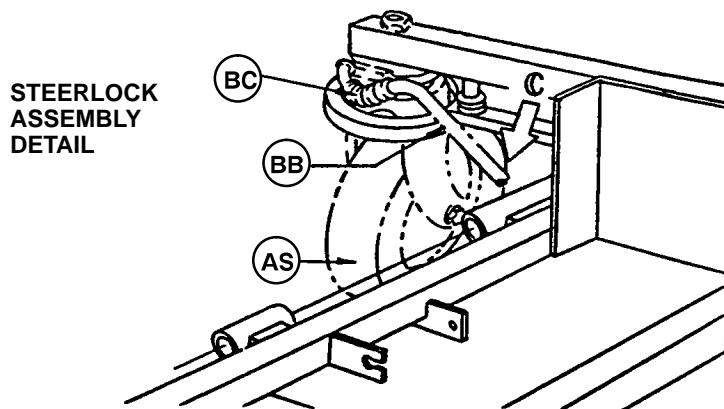
Assembly part number 716-1-251



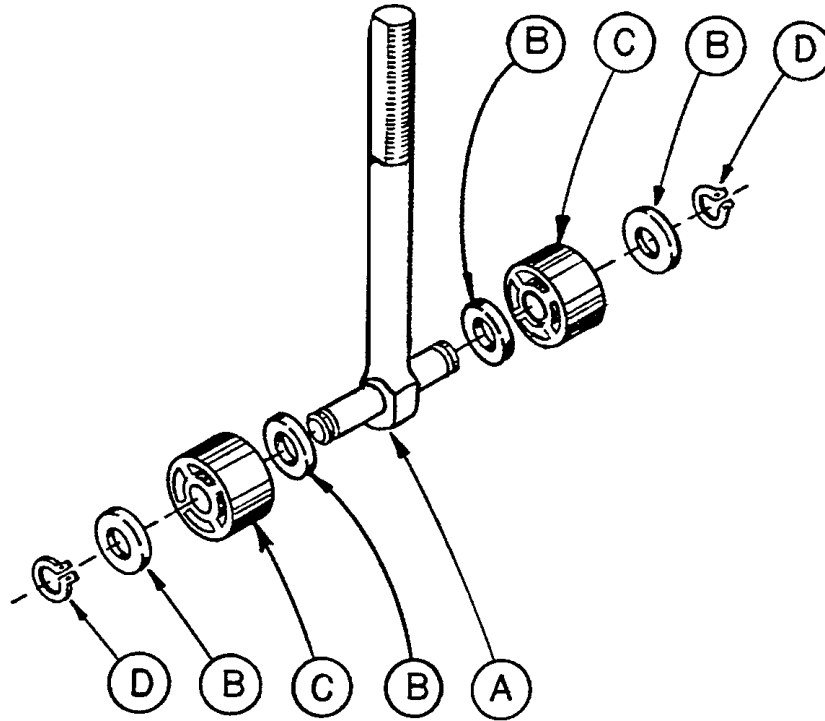
Note:
Parts and assemblies drawn with broken lines are part of optional accessories.

End Control Base Assembly (with Wheels and Brakes)

Item	Part No.	Part Name	Qty.
A	716-1-246	Base Weldment Ass'y	1
B	8-17	Soc. Hd. Shoulder Bolt	1
C	715-1-158	Caster Nut	4
D	715-1-61	Caster Brake Assembly	2
E	(Page 14)	Brake Adjuster Assembly	2
F	1210-1-345	Brake/Steer Pedal, Ft. End	1
H	1210-1-346	Brake/Steer Pedal, Hd. End	1
J	(Page 15)	Brake Cam Assembly	2
K	26-8	Roll Pin	1
L	715-1-94	Compression Spring	2
M	21-50	Set Screw	2
N	715-1-161	Fifth Wheel Cam	1
P	715-1-11	Brake Cushion	4
R	946-1-116	Brake Bar Bushing	4
T	23-25	Self-Tapping Screw	2
Y	16-49	Flexlock Nut	1
Z	715-1-337	Fifth Wheel Plate Ass'y	1
AA	715-1-231	Brake/Steer Rod Weldment	1
AB	26-261	Clevis Pin	2
AC	715-1-157	Fifth Wheel Bearing	1
AD	715-1-165	Actuator Plate Assembly	1
AF	715-1-136	Fifth Wheel Spring	1
AH	42-20	Collar w/ Set Screw	2
AJ	8-17	Soc. Hd. Shoulder Bolt	1
AK	14-2	Nylon Washer	6
AL	16-16	Nylock Nut	1
AM	715-1-156	Grounding Chain	1
AN	16-2	Fiberlock Nut	2
AP	715-1-217	Fifth Wheel Latch	1
AR	3-20	Hex Hd. Cap Screw	1
AS	(Page 17)	Steering Caster Ass'y	1
AT	(Page 18)	Caster Wheel Ass'y	3
AY	81-219	Bearing	1
AW	26-13	Roll Pin	1
AZ	(Page 19)	Fifth Wheel Ass'y	1
BA	715-1-149	Woodruff Key	1
BB	1000-10-62	Steering Lock Linkage Bar	1
BC	38-211	Spring	1
BD	8-21	Soc. Hd. Shoulder Bolt	1

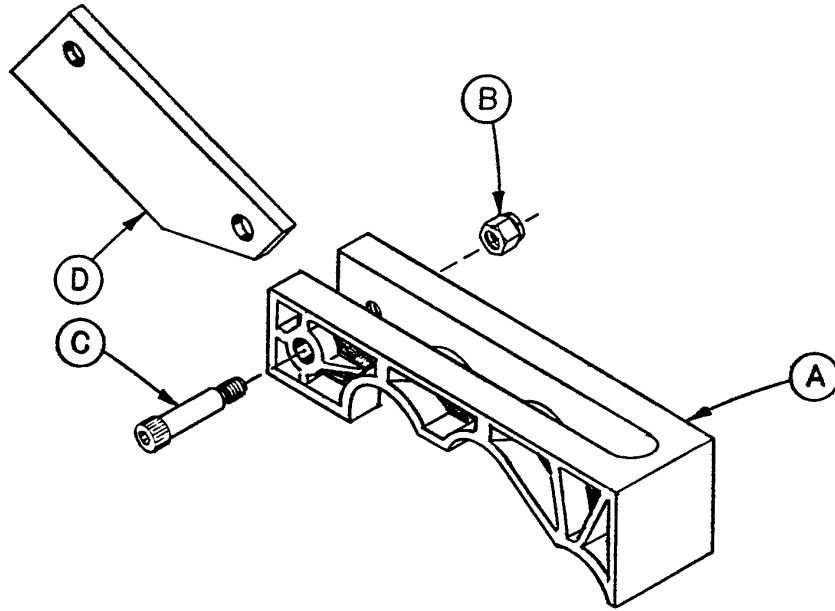


715-1-150 Brake Adjuster Assembly



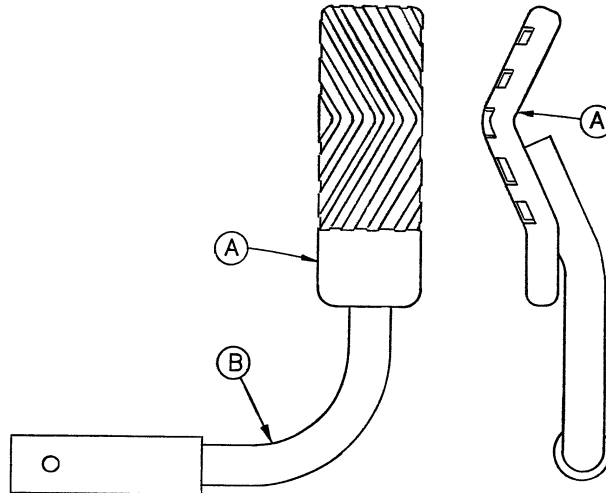
Item	Part No.	Part Name	Qty.
A	715-1-62	Threaded Stud Assembly	1
B	14-4	Nylon Washer	4
C	715-1-180	Bearing	2
D	28-8	Retaining Ring	2

715-1-213 Brake Cam Assembly



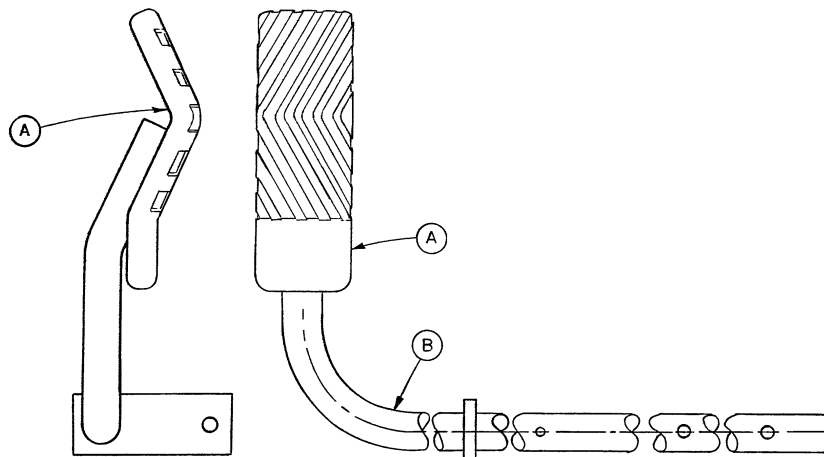
Item	Part No.	Part Name	Qty.
A	715-1-221	Brake Cam	1
B	16-59	Fiberlock Nut	1
C	8-21	Soc. Hd. Cap Screw	1
D	715-1-173	Brake Connecting Link	1

716-1-263 End Control Brake Pedal Assembly, Foot



Item	Part No.	Part Name	Qty.
A	716-1-275	Brake Pedal	1
B	716-1-262	Brake Rod Ass'y, Ft. End	1

716-1-269 End Control Brake Pedal Assembly, Head

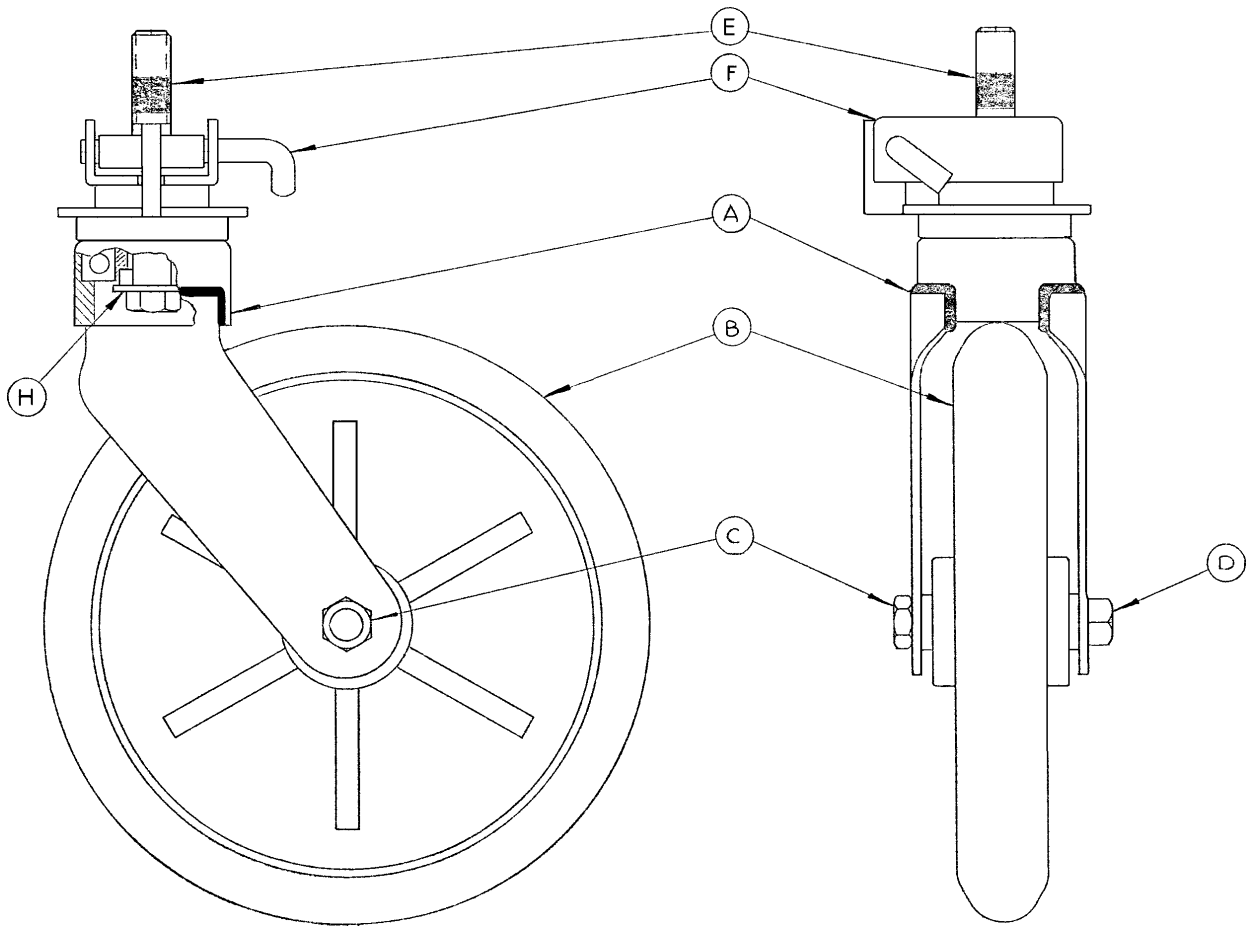


Item	Part No.	Part Name	Qty.
A	716-1-275	Brake Pedal	1
B	716-1-267	Brake Rod Ass'y, Welded	1

NOTE

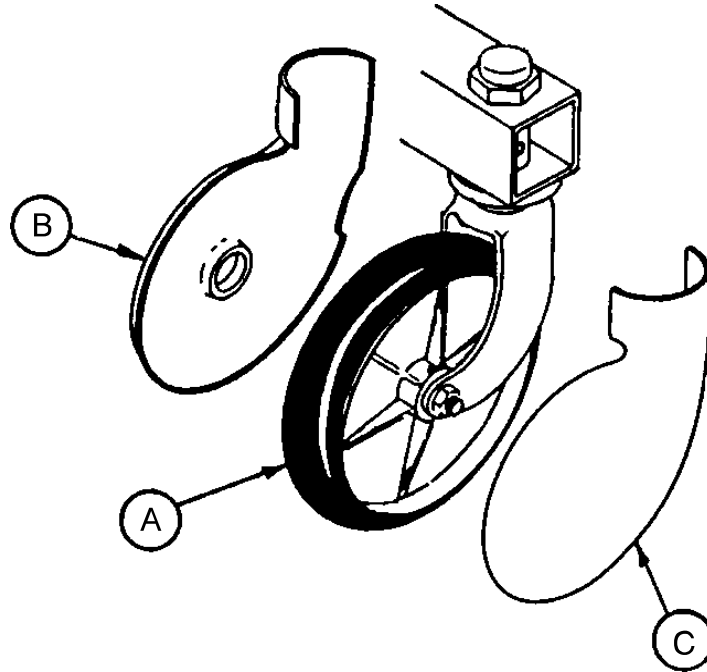
Apply plastic adhesive to the mating surfaces of item A prior to assembly.

715-2-21 Caster Assembly with Steerlock



Item	Part No.	Part Name	Qty.
A	700-10-50	Steer Lock Caster Weldment	1
B	715-2-25	Caster Wheel	1
C	16-60	Hex Nut	1
D	3-99	Hex Bolt	1
E	715-3-96	Hex Bolt	1
F	1000-59-10	Latch Assembly	1
H	11-310	Flat Washer	1

Caster and Caster Cover Replacement Kits



Item	Part No.	Part Name	Qty.
A	715-2-20	Caster Assembly	1
B	715-1-266	Caster Cover, Left	1
C	715-1-265	Caster Cover, Right	1

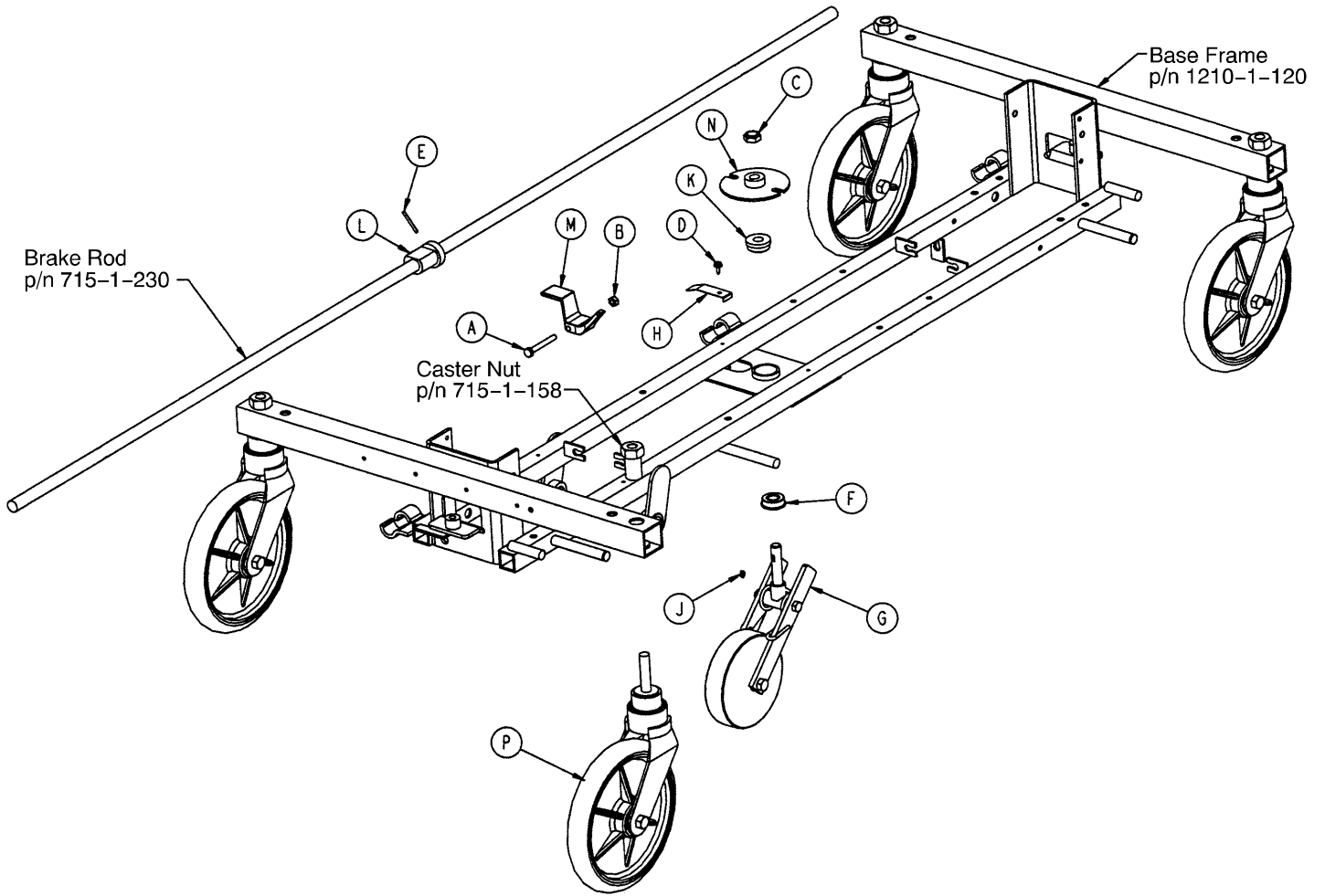
P/N 715-259-400 – Kit to replace 4 standard caster assemblies with necessary hardware – no caster covers.

P/N 715-269-400 – Kit to replace 3 standard caster assemblies and 1 steerlock caster with necessary hardware – no caster covers.

P/N 715-259-100 – Kit to replace 1 standard caster assembly with necessary hardware – no caster covers.

P/N 1010-56-200 – Kit to replace both caster covers on all four wheels.

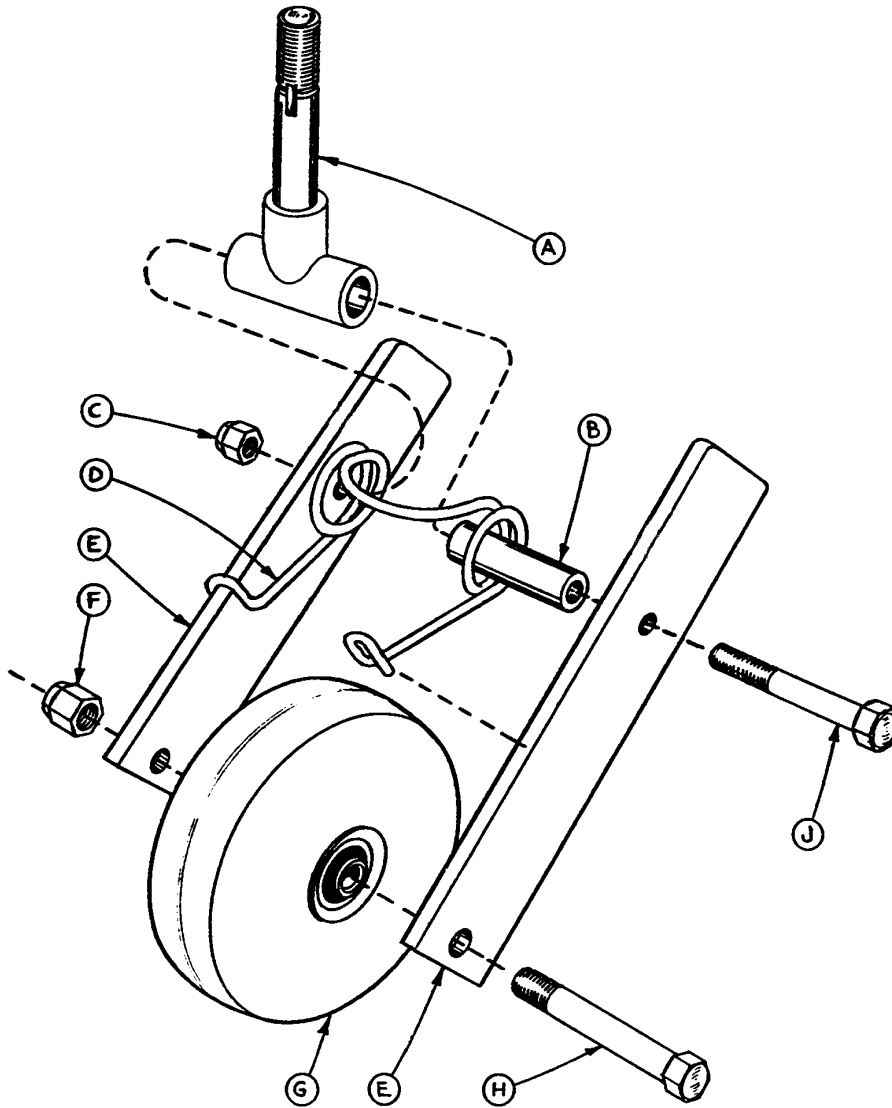
Optional Fifth Wheel Base Assembly



Item	Part No.	Part Name	Qty.
A	3-20	Hex Hd. Cap Screw	1
B	16-16	Fiberlock Nut	1
C	16-49	Nylock Hex Nut	1
D	23-25	Hex Washer Hd. Screw	1
E	26-8	Roll Pin	1
F	81-219	Bearing	1
G	(page 19)	Fifth Wheel Assembly	1
H	715-1-136	Fifth Wheel Spring	1
J	715-1-149	Key	1
K	715-1-157	Fifth Wheel Bearing	1
L	715-1-161	Fifth Wheel Cam	1
M	715-1-217	Fifth Wheel Latch	1
N	715-1-337	Fifth Wheel Plate	1
P	(page 18)	Caster Assembly	4

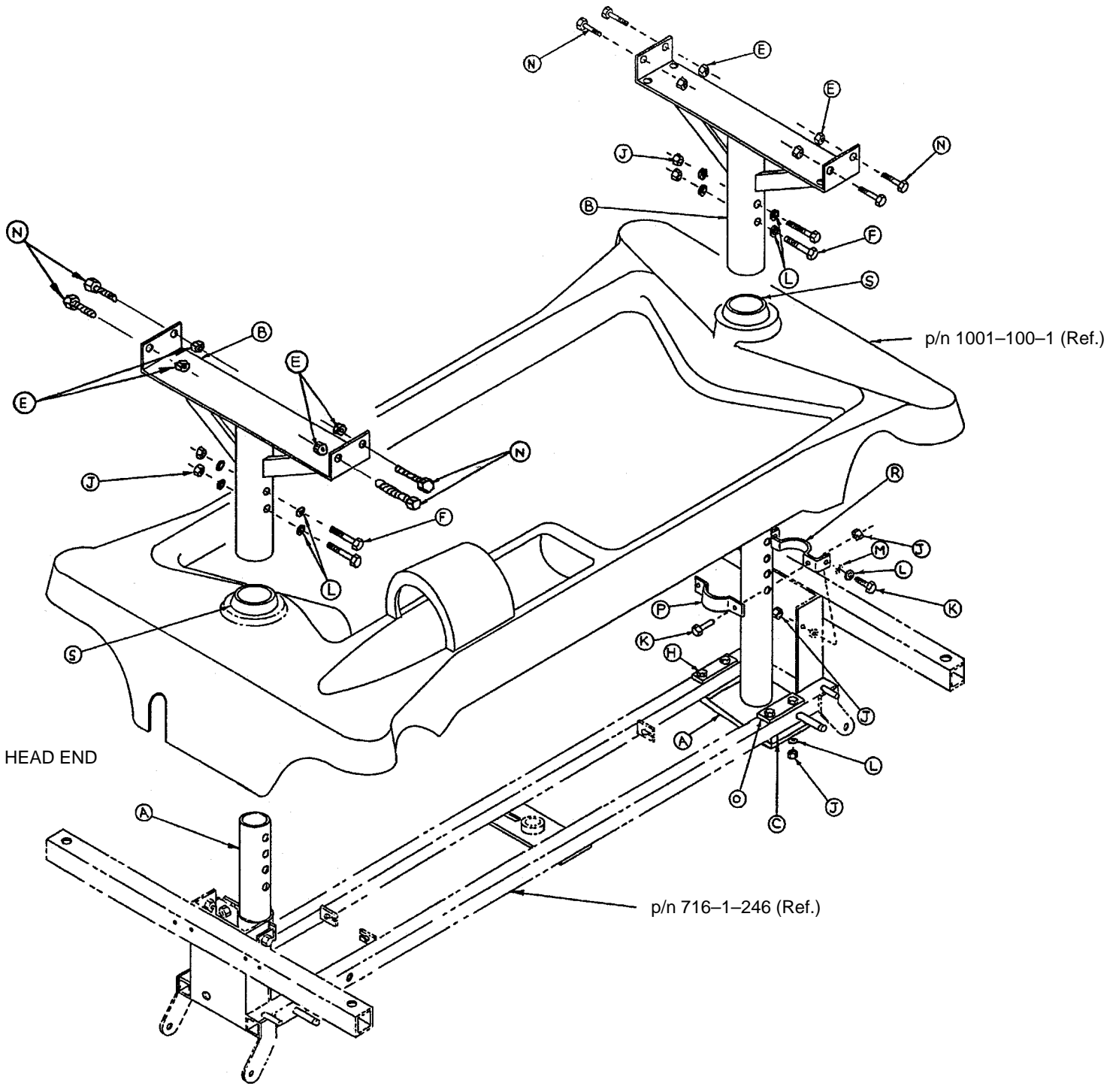
Notes

715-1-25 Fifth Wheel Assembly



Item	Part No.	Part Name	Qty.
A	715-1-339	Fifth Wheel Pivot Assembly	1
B	715-1-17	Fifth Wheel Bushing	1
C	16-11	Flexlock Nut	1
D	715-1-15	Spring	1
E	715-1-13	Fifth Wheel Bracket	2
F	16-12	Flexlock Nut	1
G	390-1-54	Wheel	1
H	3-31	Hex Head Cap Screw	1
J	3-82	Hex Head Cap Screw	1

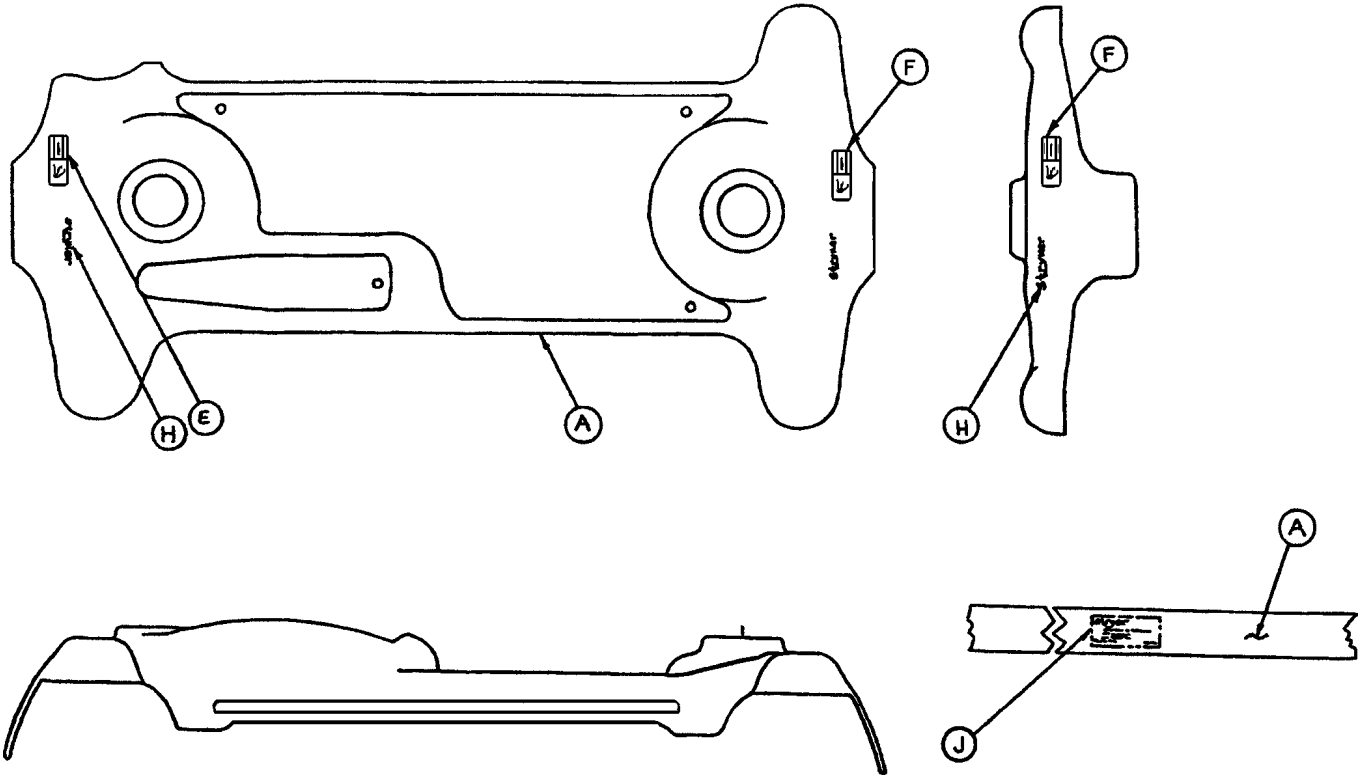
720-201-50 Stretcher Base Assembly



720-201-50 Stretcher Base Assembly

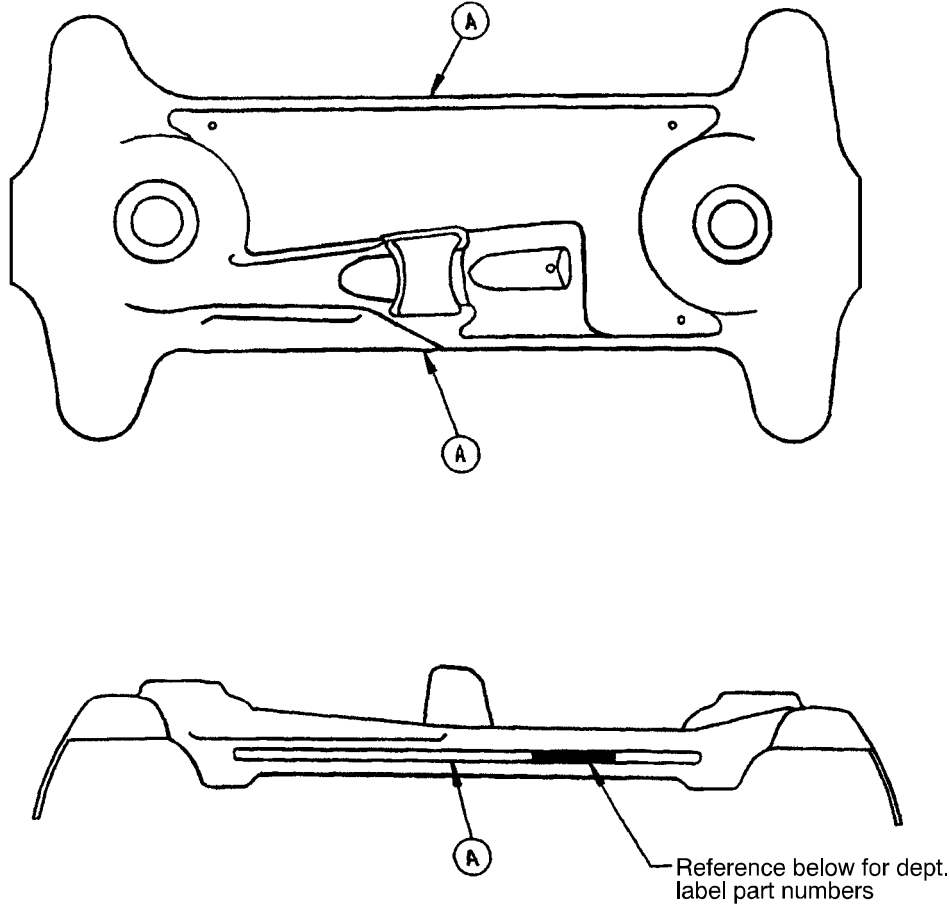
Item	Part No.	Part Name	Qty.
A	720-33-25	Lower Tower Ass'y	2
B	720-201-32	Upper Tower Ass'y	2
C	720-201-33	Front Spacer	4
E	16-28	Nylock Nut	8
F	3-93	Hex Hd. Cap Screw	4
H	3-82	Hex Hd. Cap Screw	8
J	16-36	Self-Locking Nut	20
K	3-85	Hex Hd. Cap Screw	8
L	11-3	Washer	20
M	13-38	Lock Washer	4
N	3-47	Hex Hd. Cap Screw	8
O	11-262	Flat Washer	8
P	715-1-193	Jack Clamp	2
R	715-1-192	Jack Support	2
S	946-421-5	Grommet	2
W	921-1-252	Serial No. Label (not shown)	1

Base Labeling Assembly



Item	Part No.	Part Name	Qty.
A	1001-100-1	Hood Assembly	1
C	29-7	Dual Lock (not shown)	1
D	29-9	Dual Lock (not shown)	1
E	721-31-44	Brake/Steer Label, Head	1
F	721-31-45	Brake/Steer Label, Foot	1
H	946-1-60	Stryker Logo Label	2
J	720-32-90	Specification Label	1

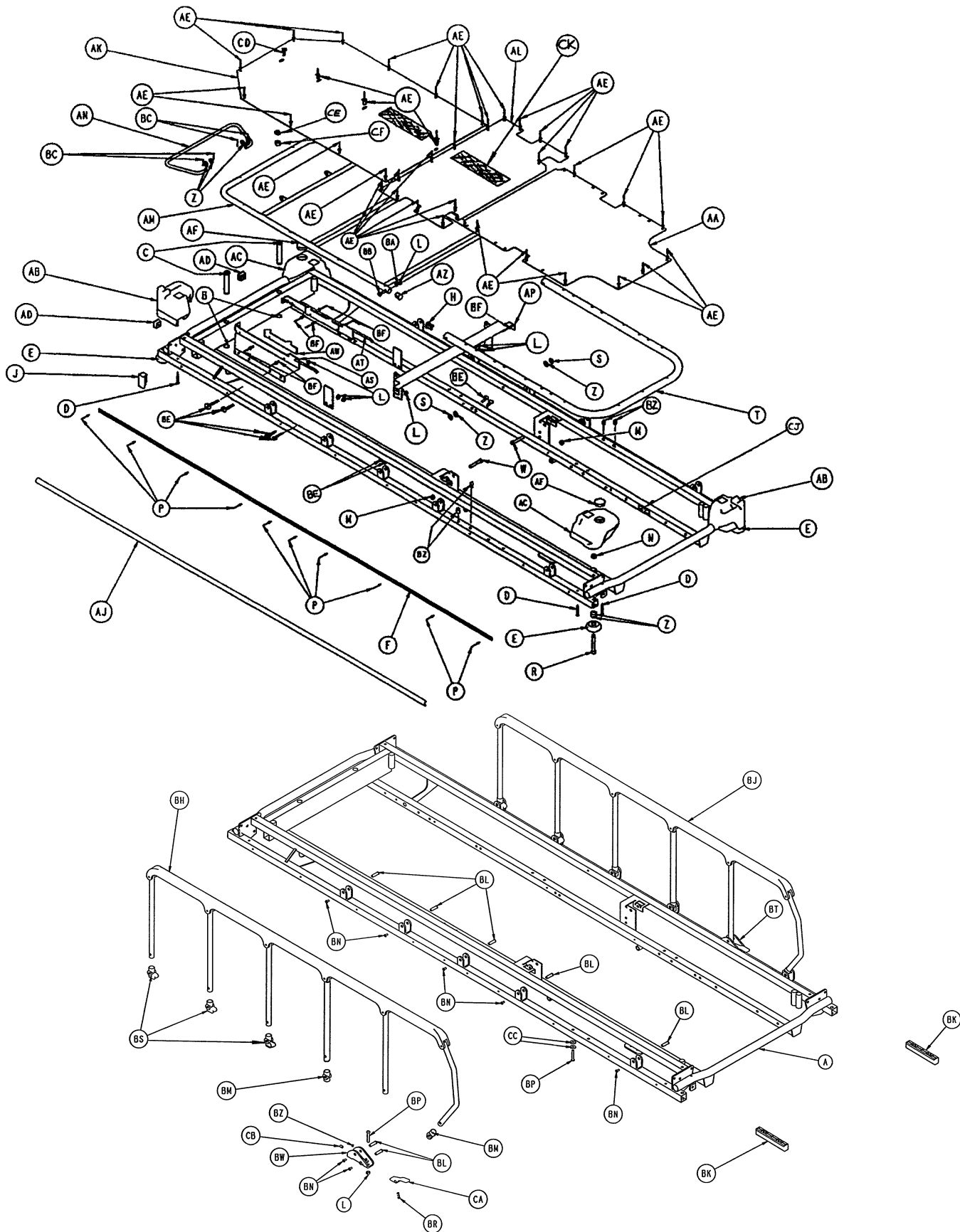
Stretcher Graphics



Color	Item A Stripe Label	Litter Bumper Strip
RED	1001-800-13	1010-700-15
PURPLE	1001-800-23	1010-700-25
GREEN	1001-800-33	1010-700-35
GRAY	1001-800-43	1010-700-45
TEAL	1001-800-53	1010-700-55
PINK	1001-800-63	1010-700-65
BLUE	1001-800-73	1010-700-75

Department	Label Part Number	Department	Label Part Number
Emergency	1010-900-1	Endoscopy	1010-900-7
P.A.C.U.	1010-900-2	Radiology	1010-900-8
Transport	1010-900-3	Nuclear Medicine	1010-900-9
Surgery	1010-900-4	Ambulatory Surgery	1010-900-10
Extended Stay	1010-900-5	G.I. Lab	1010-900-11
Maternity	1010-900-6	Cath. Lab	1010-900-12

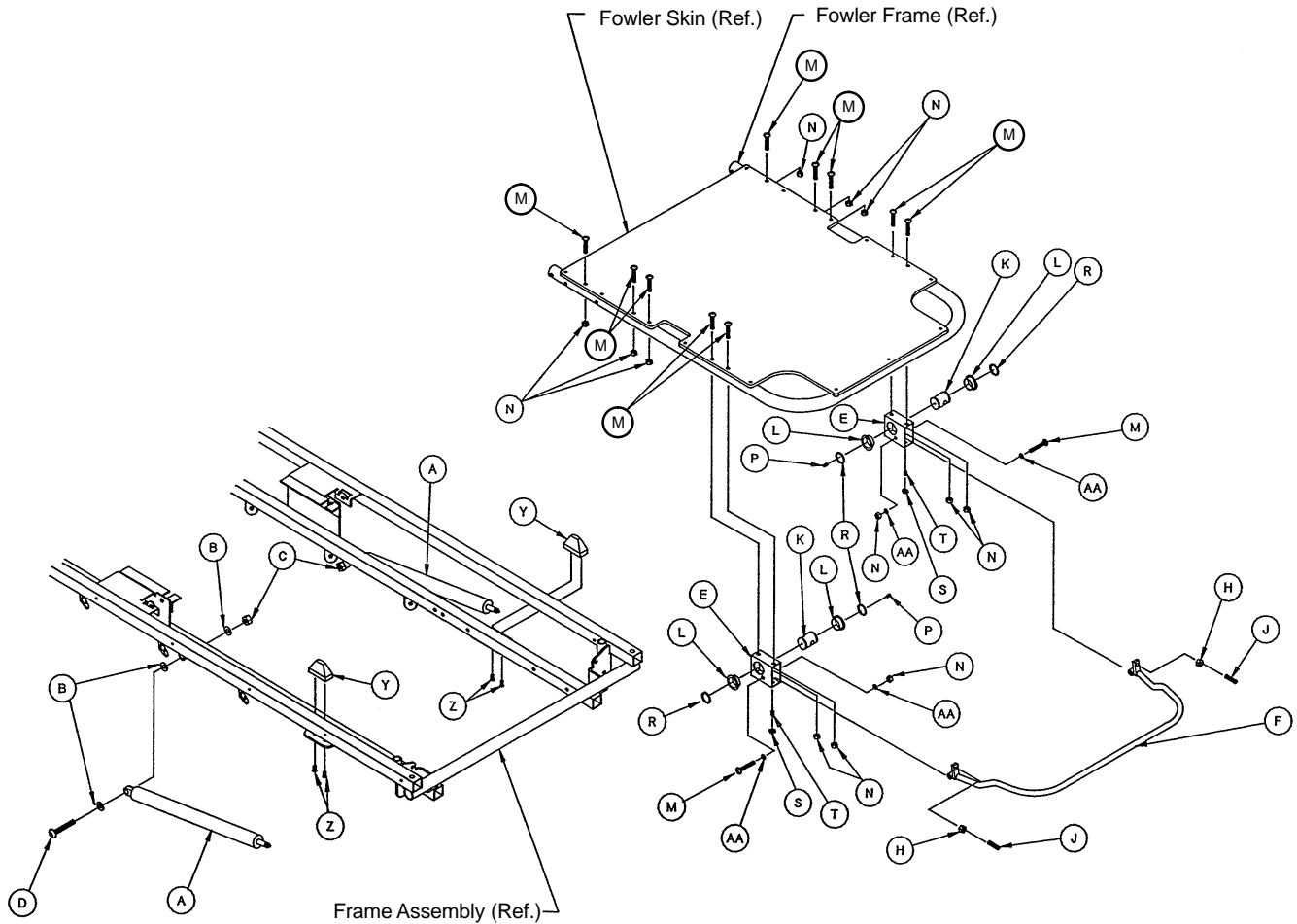
720-201-10 Litter Assembly



720-201-10 Litter Assembly

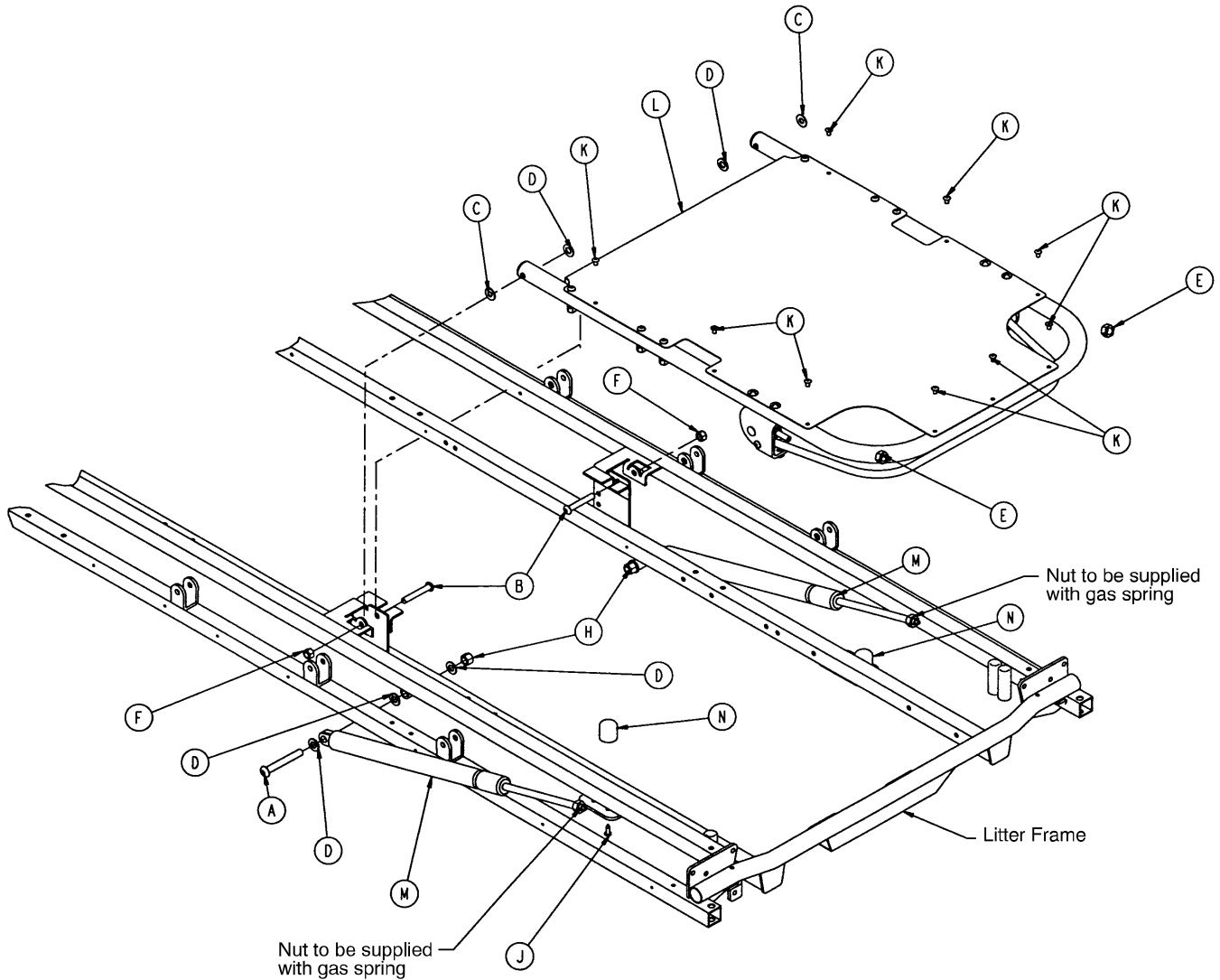
Item	Part No.	Part Name	Qty.	Item	Part No.	Part Name	Qty.
A	721-201-20	Frame Assembly	1	AS	1001-34-29	Slider Support Ass'y, Lt.	1
B	28-23	Retaining Ring	2	AT	1001-34-30	Slider Support Ass'y, Rt.	1
C	1001-40-12	Foot Board Receptacle	2	AW	720-201-21	Riser Stop	2
D	23-104	Self-Tapping Screw	8	AZ	1001-34-25	End Plug	2
E	926-400-142	Corner Wheel	4	BA	14-2	Flat Washer	2
F	1010-201-27	Bumper Extrusion	2	BB	3-47	Soc. Hd. Cap Screw	6
H	1001-1-36	End Plug	2	BC	27-4	Cotter Pin	4
J	1001-1-41	Tube Plug	2	BE	4-32	Hex Hd. Cap Screw	4
L	16-28	Nylock Hex Nut	16	BF	25-79	Pop Rivet	8
M	16-11	Flexlock Nut	2	BH	(page 34)	Siderail Ass'y, Left	1
N	16-35	Nylock Nut	4	BJ	(page 34)	Siderail Ass'y, Right	1
P	25-38	Pop Rivet	20	BK	1010-26-69	Lock Support	2
R	4-201	Soc. Hd. Cap Screw	4	BL	721-26-66	Pivot Screw	14
S	11-179	Nylon Flat Washer	2	BM	721-26-69	Upright Sleeve	4
T	721-231-13	Fowler Tube	1	BN	4-136	But. Hd. Cap Screw	14
W	4-183	Fowler Pivot Bolt	2	BP	4-135	But. Hd. Cap Screw	4
Z	14-21	Washer	18	BR	38-220	Compression Spring	2
AA	721-231-12	Fowler Skin	1	BS	721-26-68	Upright Cradle	6
AB	1010-201-238	Corner Cover, Slot Only	2	BT	1010-26-81	Lock Housing Ass'y, Lt.	1
AC	1010-201-239	Corner Cover, Hole Only	2	BW	1010-26-80	Lock Housing Ass'y, Rt.	1
AD	37-10	Hole Plug	2	BZ	37-74	Hole Plug	6
AE	25-122	Pop Rivet	36	CA	721-26-74	Lock Handle, Machined	2
AF	37-59	Hole Plug	2	CB	21-104	Set Screw	2
AJ	(page 23)	Siderail Bumper	2	CC	11-2	Flat Washer	4
AK	720-201-126	Foot Section Skin	1	CD	4-131	But. Hd. Cap Screw	1
AL	720-201-27	Midsection Skin	1	CE	15-4	Hex Nut	1
AM	720-201-122	Foot Section Tube Ass'y	1	CF	37-11	Neoprene Cap	1
AN	720-201-20	Gatch Riser	1	CH	721-31-65	Litter Hole Plug (not shown)	4
AP	720-201-23	Midsection Support	1	CJ	1210-800-8	Patent Label	1
AR	1001-34-24	Thigh Support	2	CK	7900-1-102	Velcro Pile	24"

721-231-10 Pneumatic Fowler Assembly



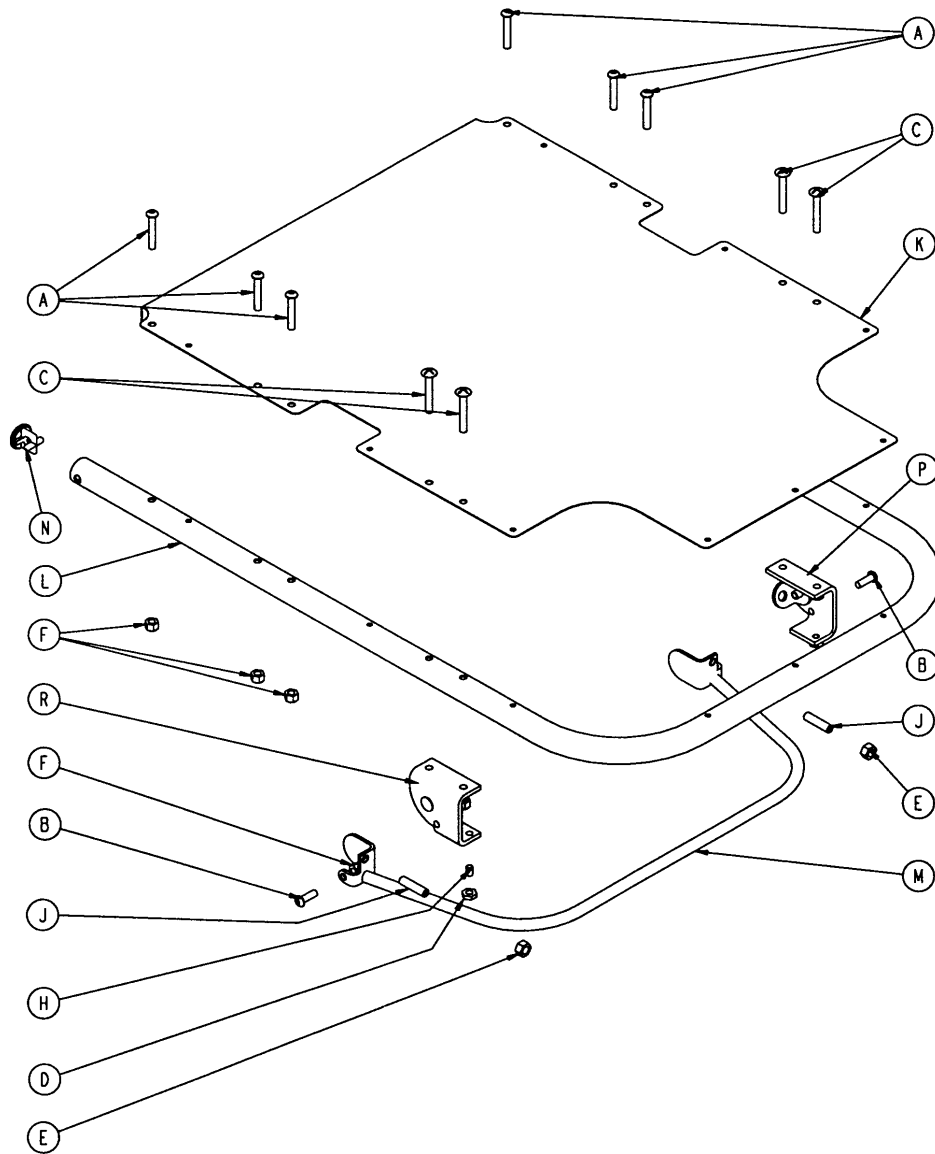
Item	Part No.	Part Name	Qty.
A	1010-31-78	Gas Spring	2
B	14-21	Nylon Flat Washer	6
C	16-35	Nylock Hex Nut	2
D	4-182	Pivot Bolt	2
E	1001-31-30	Yoke Housing	2
F	721-231-18	Trip Bar Assembly	1
H	15-50	Hex Nut	2
J	21-126	Set Screw	2
K	1510-31-28	Yoke	2
L	946-35-25	Liner	4
M	4-135	But. Hd. Cap Screw	12
N	16-28	Fiberlock Nut	12
P	21-119	Set Screw	2
R	28-76	Retaining Ring	4
S	15-37	Jam Nut	2
T	21-104	Set Screw	2
Y	1001-31-31	Pneumatic Fowler Rest	2
Z	23-100	Self-Tapping Screw	4
AA	11-132	Washer	4

721-231-110 Pneumatic Fowler to Frame Assembly



Item	Part No.	Part Name	Qty.
A	4-182	Hex Soc. But. Hd. Cap Screw	2
B	4-183	Hex Soc. But. Hd. Cap Screw	2
C	11-179	Washer	2
D	14-21	Washer	8
E	15-59	Hex Jam Nut	2
F	16-11	Hex Nut	2
H	16-35	Hex Nut	2
J	23-100	Self-Tapping Screw	2
K	25-122	Blind Rivet	9
L	(page 26.2)	Pneumatic Fowler Assembly	1
M	1010-31-78	Gas Cylinder	2
N	1211-31-31	Pneumatic Fowler Rest	2

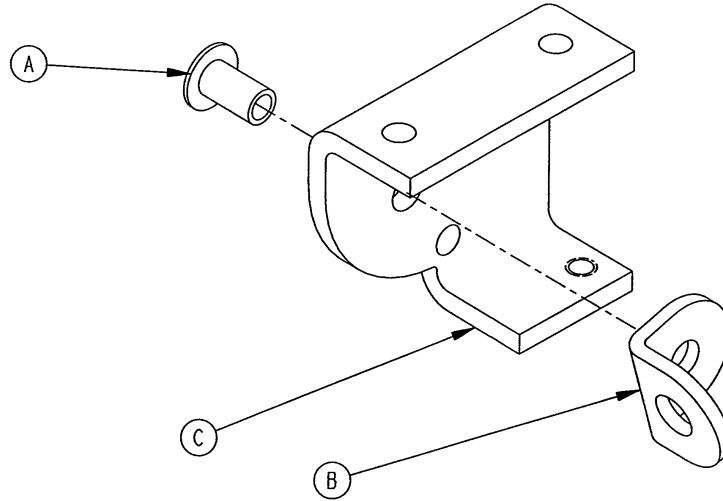
721-231-120 Pneumatic Fowler Assembly



Item	Part No.	Part Name	Qty.
A	4-135	But Hd. Cap Screw	6
B	4-161	Hex Soc. But. Hd. Cap Screw	2
C	7-34	Truss Hd. Mach. Screw	4
D	15-37	Jam Nut	2
E	15-50	Hex Nut	2
F	16-28	Nylock Nut	12
H	21-125	Set Screw	2
J	21-126	Set Screw	2
K	721-231-12	Fowler Skin	1
L	721-231-13	Fowler Tube	1
M	721-231-118	Trip Bar Assembly	1
N	1001-1-36	Hole Plug	2
P	(page 26.3)	Outer Housing Ass'y, Right	1
R	(page 26.3)	Outer Housing Ass'y, Left	1

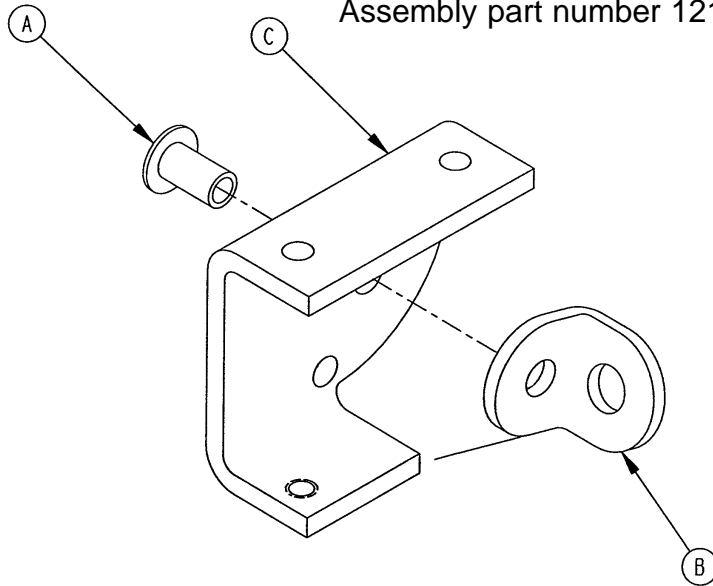
Outer Housing Assembly, Right and Left

Assembly part number 1210-31-106 (Right)



Item	Part No.	Part Name	Qty.
A	25-144	Semi-Tubular Rivet	1
B	1210-31-103	Pivot Tab	1
C	1210-31-104	Outer Housing, Right	1

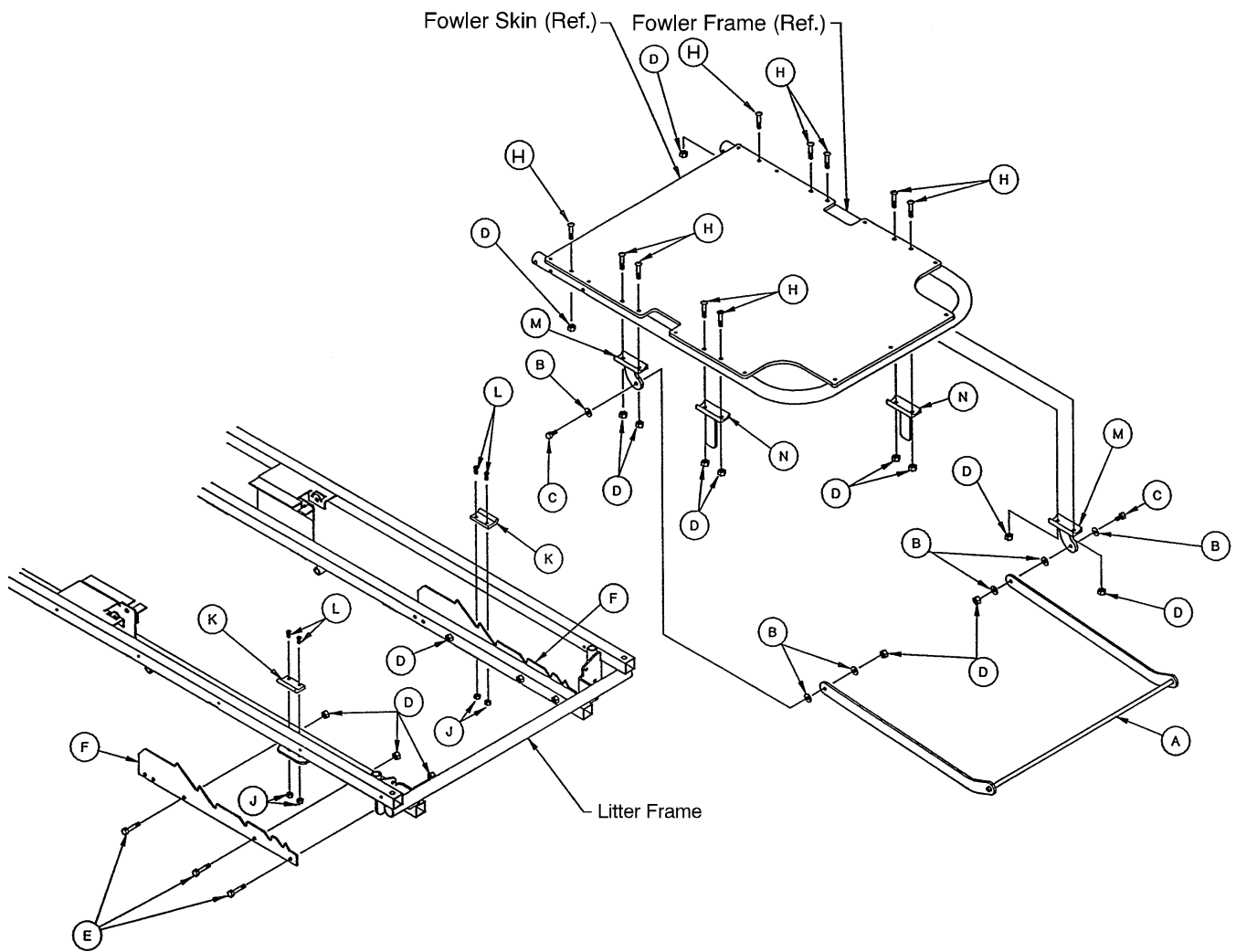
Assembly part number 1210-31-107 (Left)



Item	Part No.	Part Name	Qty.
A	25-144	Semi-Tubular Rivet	1
B	1210-31-103	Pivot Tab	1
C	1210-31-105	Outer Housing, Left	1

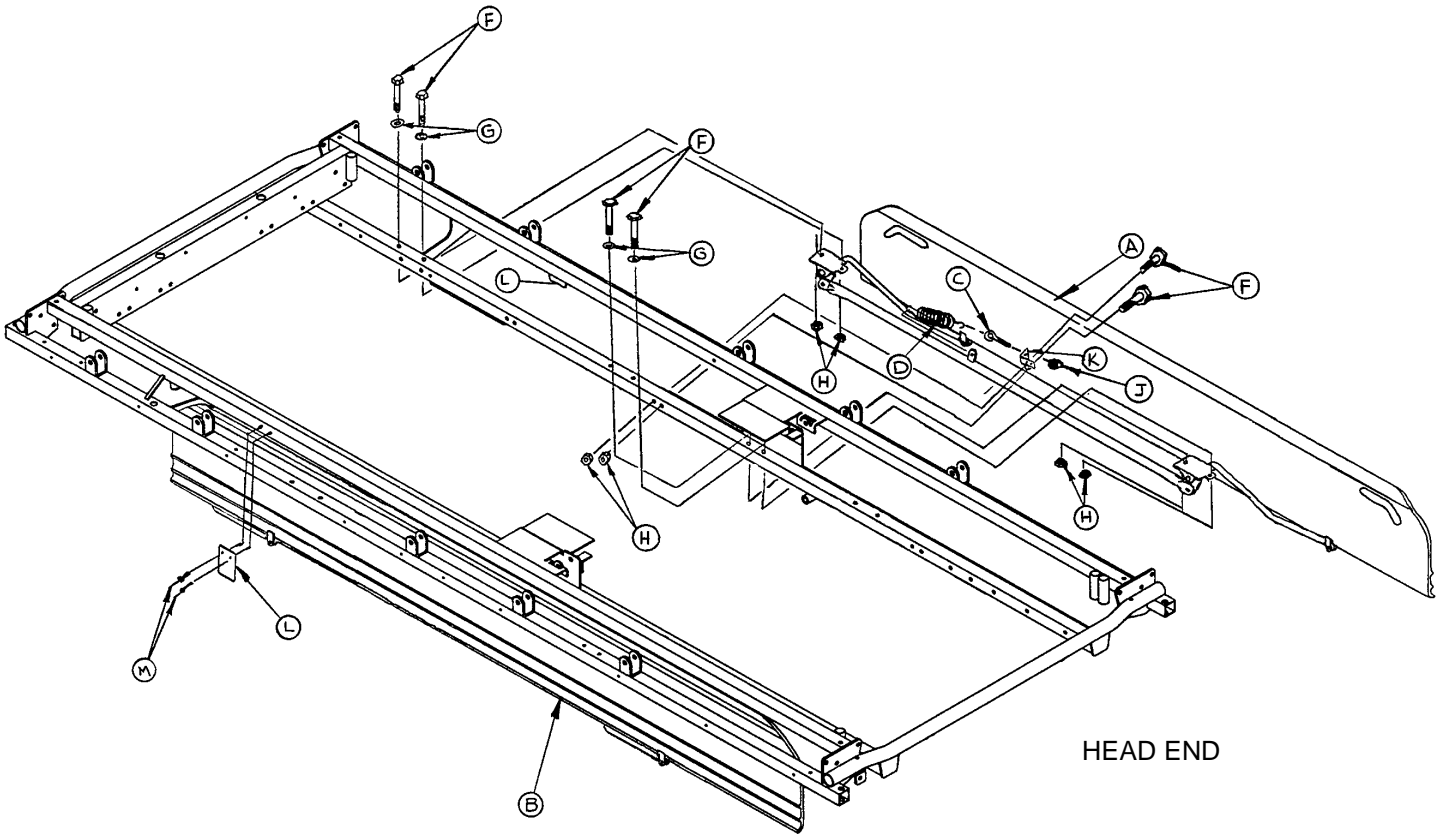
Notes

721-232-10 Manual Fowler Assembly



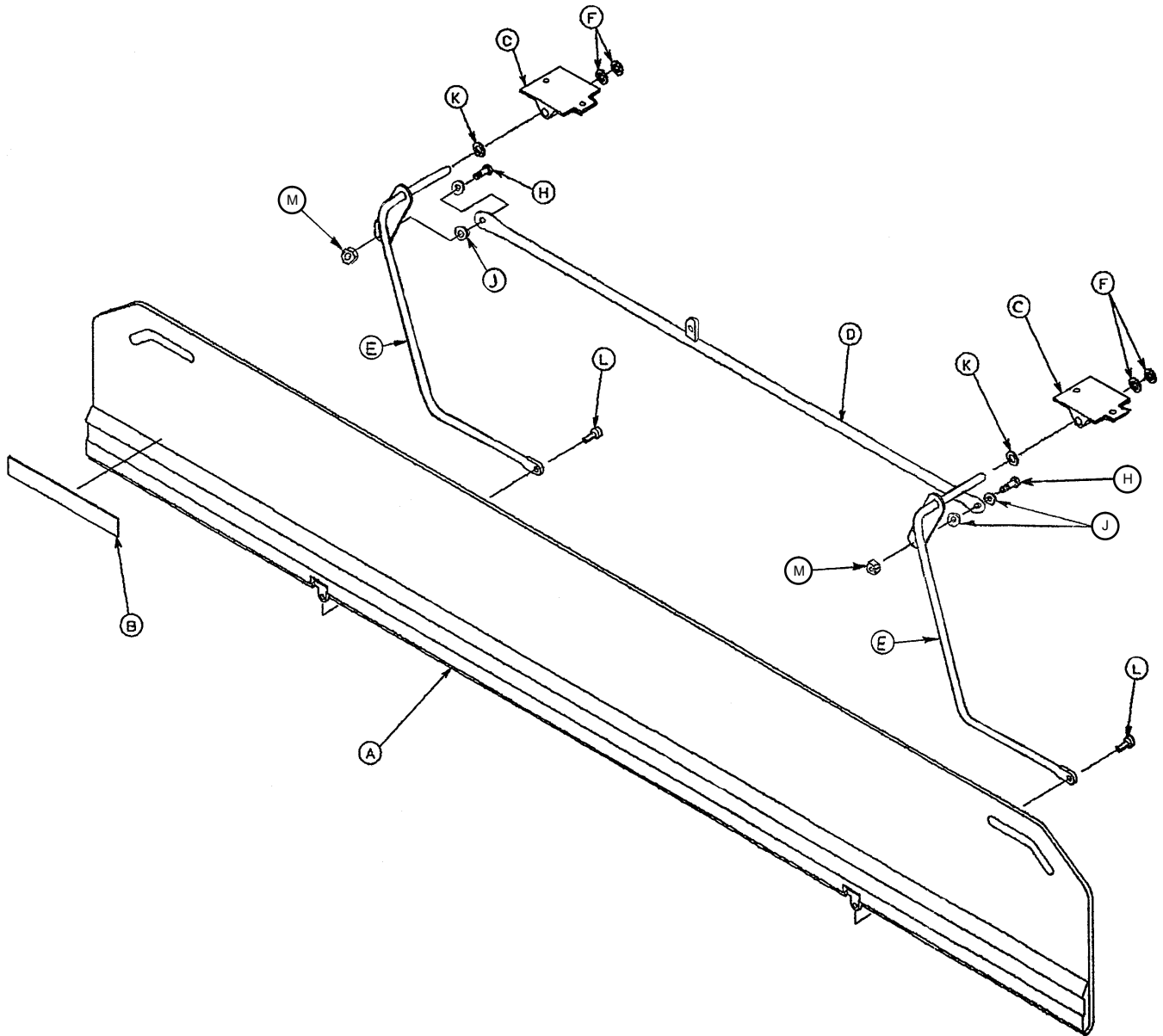
Item	Part No.	Part Name	Qty.
A	721-232-19	Brace Assembly	1
B	14-2	Nylon Flat Washer	6
C	3-54	Hex Hd. Cap Screw	2
D	16-28	Nylock Hex Nut	18
E	3-47	Hex Hd. Cap Screw	6
F	1001-32-22	Position Bar Rest	2
H	4-135	But. Hd. Cap Screw	10
J	16-3	Lock Nut	4
K	1001-32-26	Manual Fowler Rest	2
L	4-169	But. Hd. Cap Screw	4
M	1001-32-23	Tab Assembly	2
N	1001-32-28	Riser Assembly	2

721-235-10 Long Transfer System to Frame Assembly



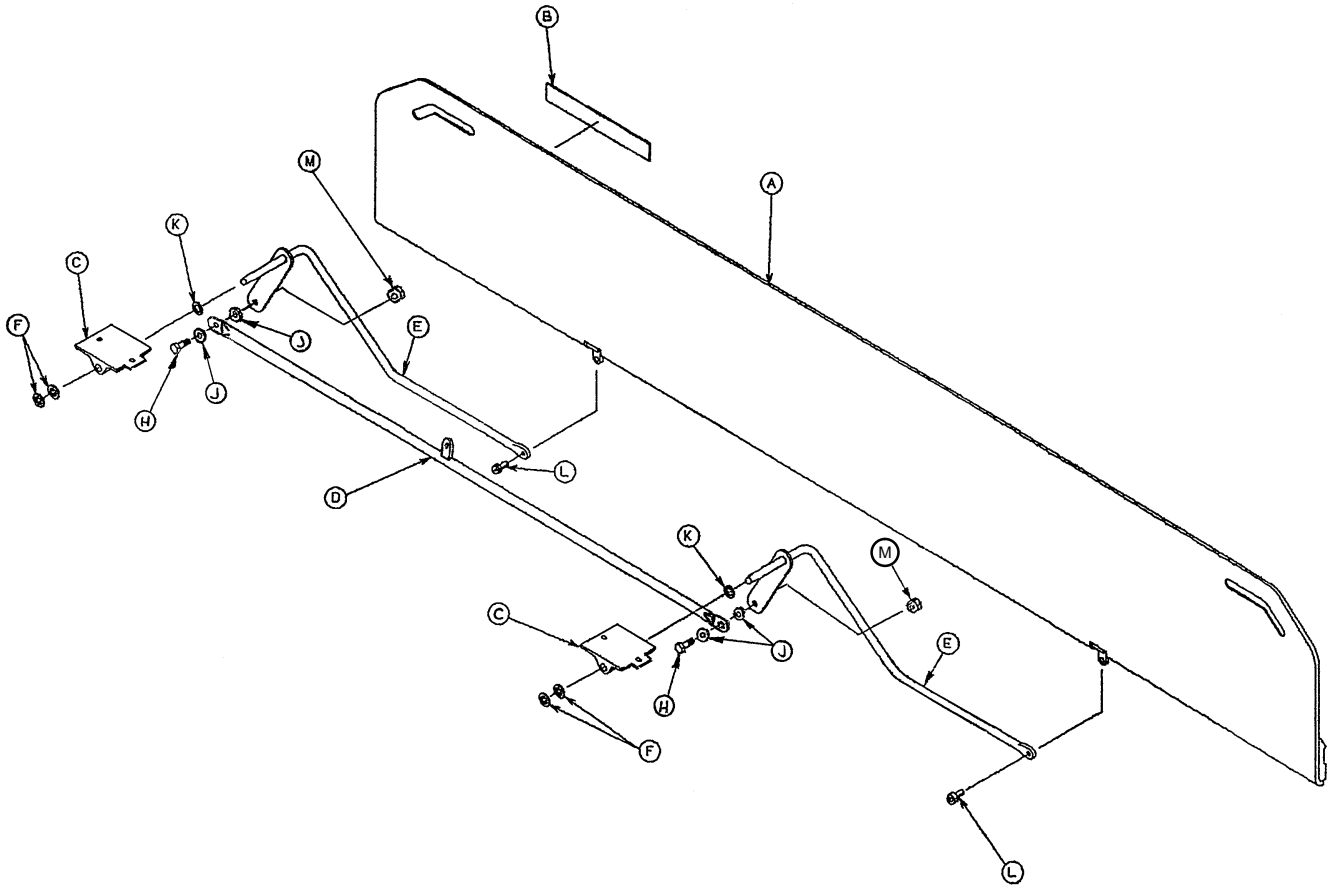
Item	Part No.	Part Name	Qty.
A	(page 30)	Transfer System Ass'y, Rt.	1
B	(page 29)	Transfer System Ass'y, Lt.	1
C	10-11	Eye Bolt	2
D	38-218	Tension Spring	2
E	721-224-25	Spring Retainer, Rt.	1
F	3-78	Hex Hd. Cap Screw	12
G	11-180	Flat Washer	8
H	16-28	Nylock Hex Nut	12
J	15-21	Jam Nut	2
K	721-224-24	Spring Retainer, Lt.	1
L	721-24-61	Pivot Arm Rest	2
M	25-79	Pop Rivet	4

721-234-12 Long Transfer System Assembly, Left



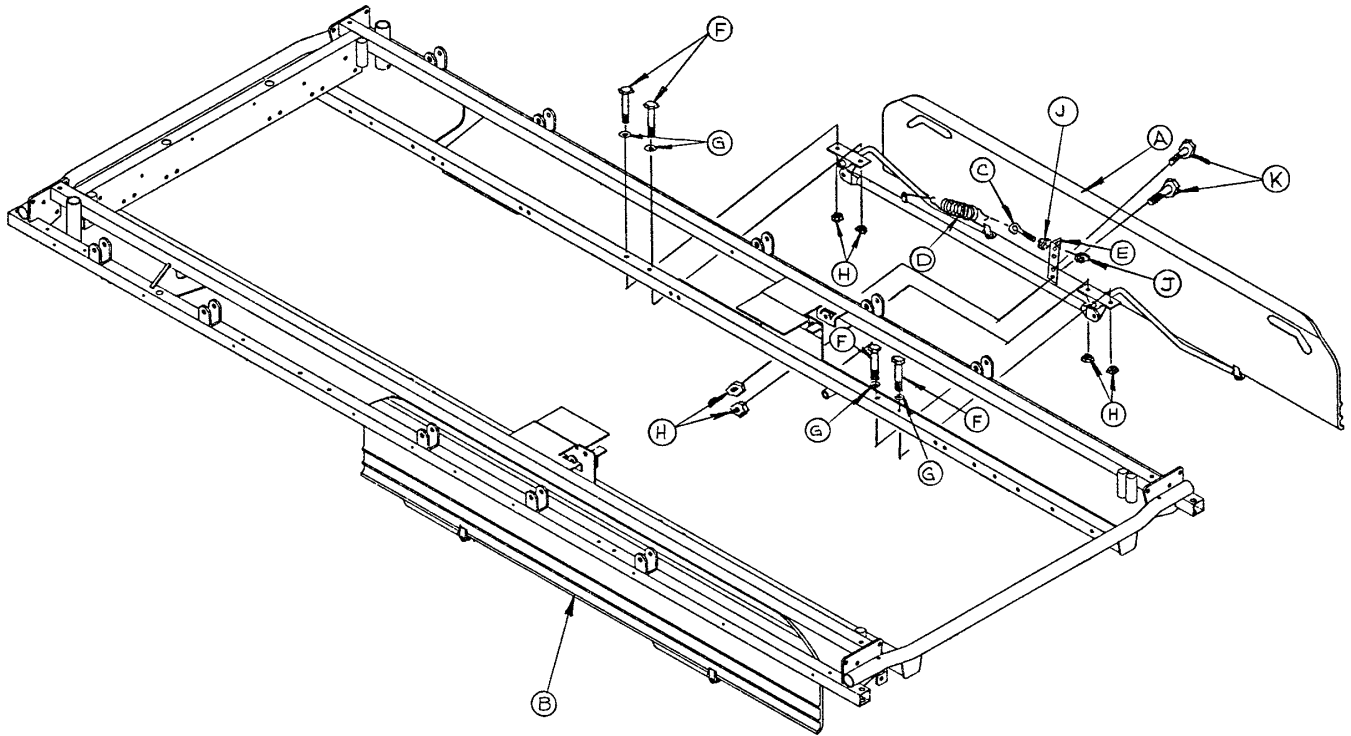
Item	Part No.	Part Name	Qty.
A	721-24-55	Transfer Board Ass'y	1
B	721-24-46	Label	1
C	721-224-16	Long Pivot, Machined	2
D	721-224-33	Connecting Link Ass'y	1
E	721-232-17	Pivot Arm Ass'y, Lt.	2
F	28-93	Retaining Ring	4
H	3-50	Hex Hd. Cap Screw	2
J	11-224	Nylon Flat Washer	4
K	14-21	Nylon Flat Washer	2
L	4-156	Soc. Hd. Cap Screw	2
M	16-28	Nylock Hex Nut	2

721-234-13 Long Transfer System Assembly, Right



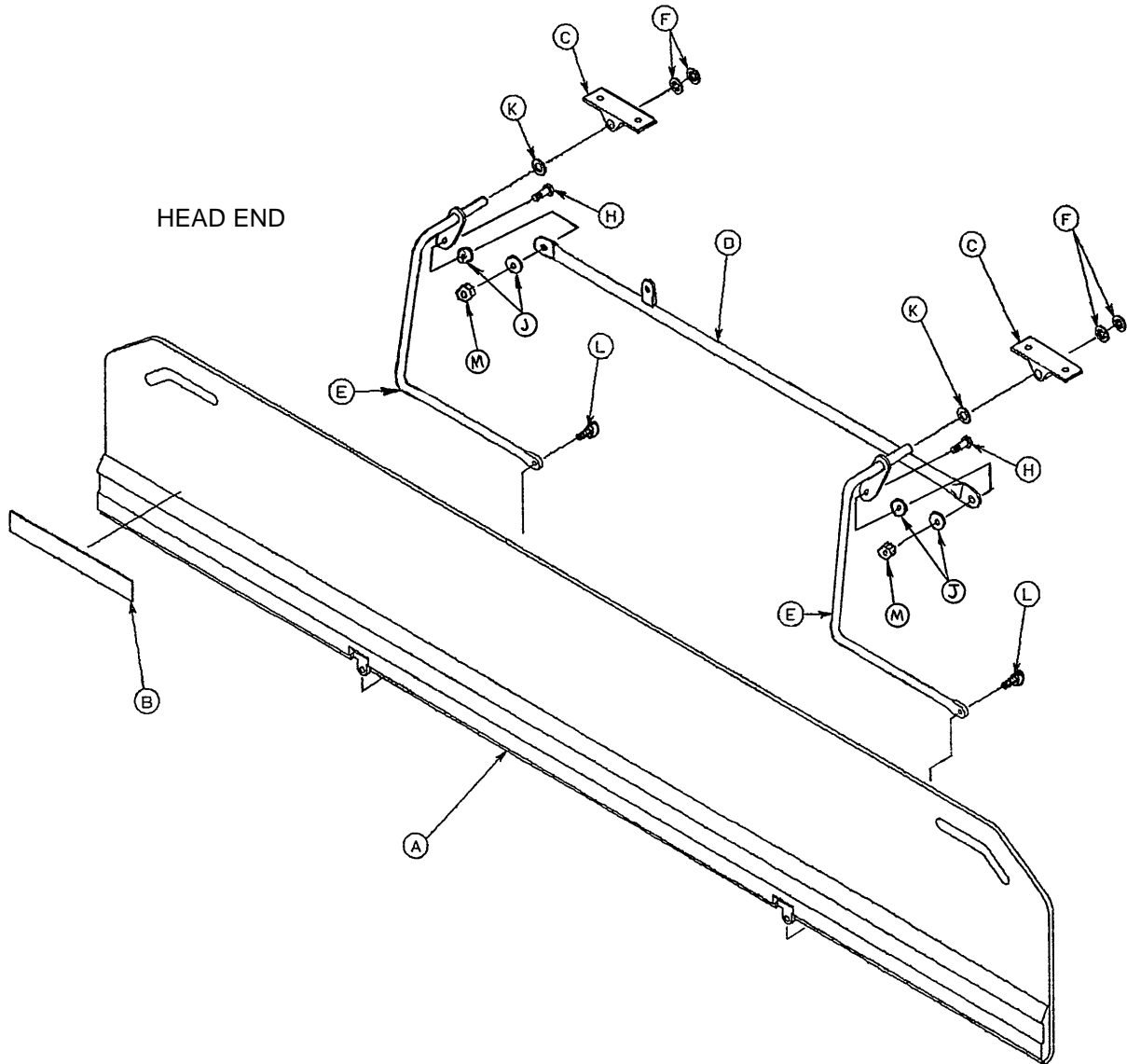
Item	Part No.	Part Name	Qty.
A	721-24-55	Transfer Board Ass'y	1
B	721-24-46	Label	1
C	721-224-16	Long Pivot, Machined	2
D	721-224-33	Connecting Link Ass'y, Rt.	1
E	721-232-16	Pivot Arm Ass'y, Right	2
F	28-93	Retaining Ring	4
H	3-50	Hex Hd. Cap Screw	2
J	11-224	Nylon Flat Washer	4
K	14-21	Nylon Flat Washer	2
L	4-156	Soc. Hd. Cap Screw	2
M	16-28	Nylock Hex Nut	2

721-239-10 Short Transfer System to Frame Ass'y



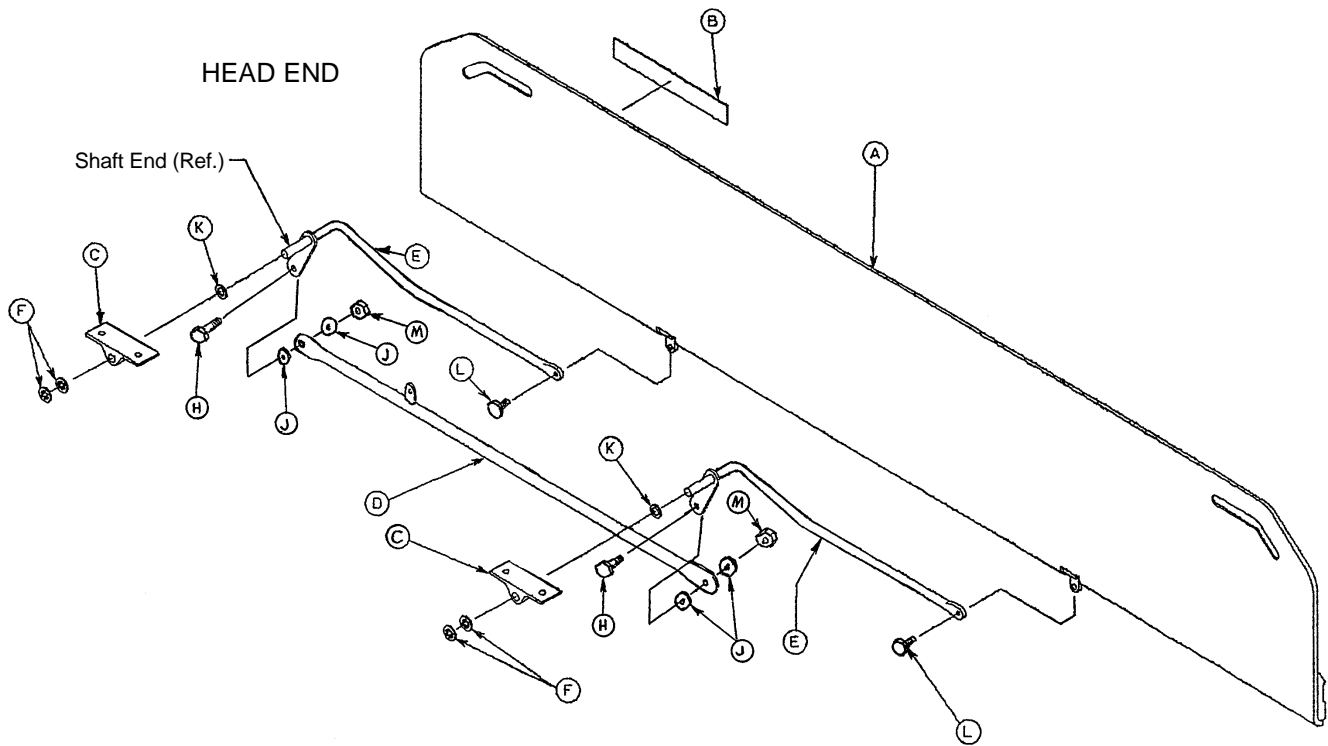
Item	Part No.	Part Name	Qty.
A	(page 33)	Transfer System Ass'y, Rt.	1
B	(page 32)	Transfer System Ass'y, Lt.	1
C	10-11	Eye Bolt	2
D	38-218	Tension Spring	2
E	1010-224-25	Spring Retainer	2
F	3-78	Hex Hd. Cap Screw	8
G	11-180	Flat Washer	8
H	16-28	Nylock Hex Nut	12
J	15-21	Jam Nut	4
K	3-5	Hex Hd. Cap Screw	4

1010-232-11 Short Transfer System Assembly, Left



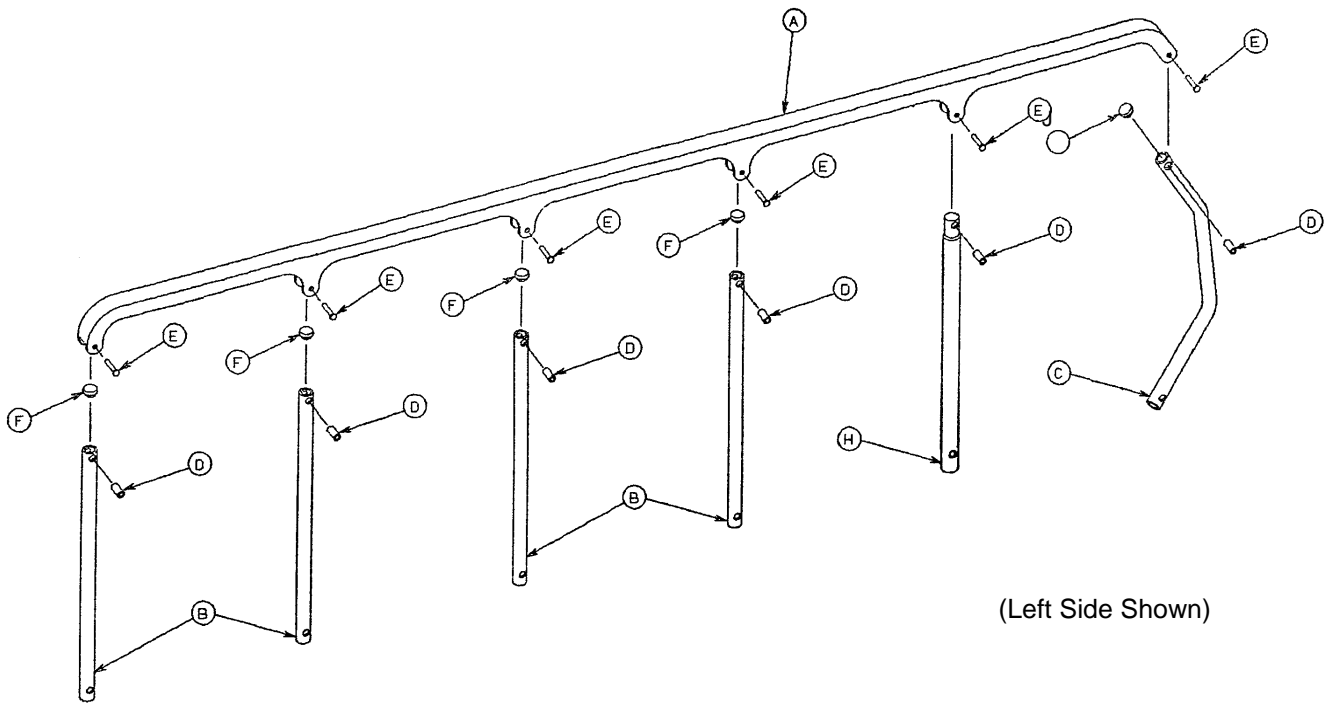
Item	Part No.	Part Name	Qty.
A	1020-32-100	Transfer Board Ass'y	1
B	721-24-46	Label	1
C	1010-32-98	Pivot	2
D	1010-224-33	Connecting Link Ass'y	1
E	1010-232-17	Pivot Arm Ass'y, Lt.	2
F	28-93	Retaining Ring	4
H	3-50	Hex Hd. Cap Screw	2
J	11-224	Nylon Flat Washer	4
K	14-21	Nylon Flat Washer	2
L	4-156	Soc. Hd. Cap Screw	2
M	16-28	Nylock Hex Nut	2

1010-232-10 Short Transfer System Assembly, Right



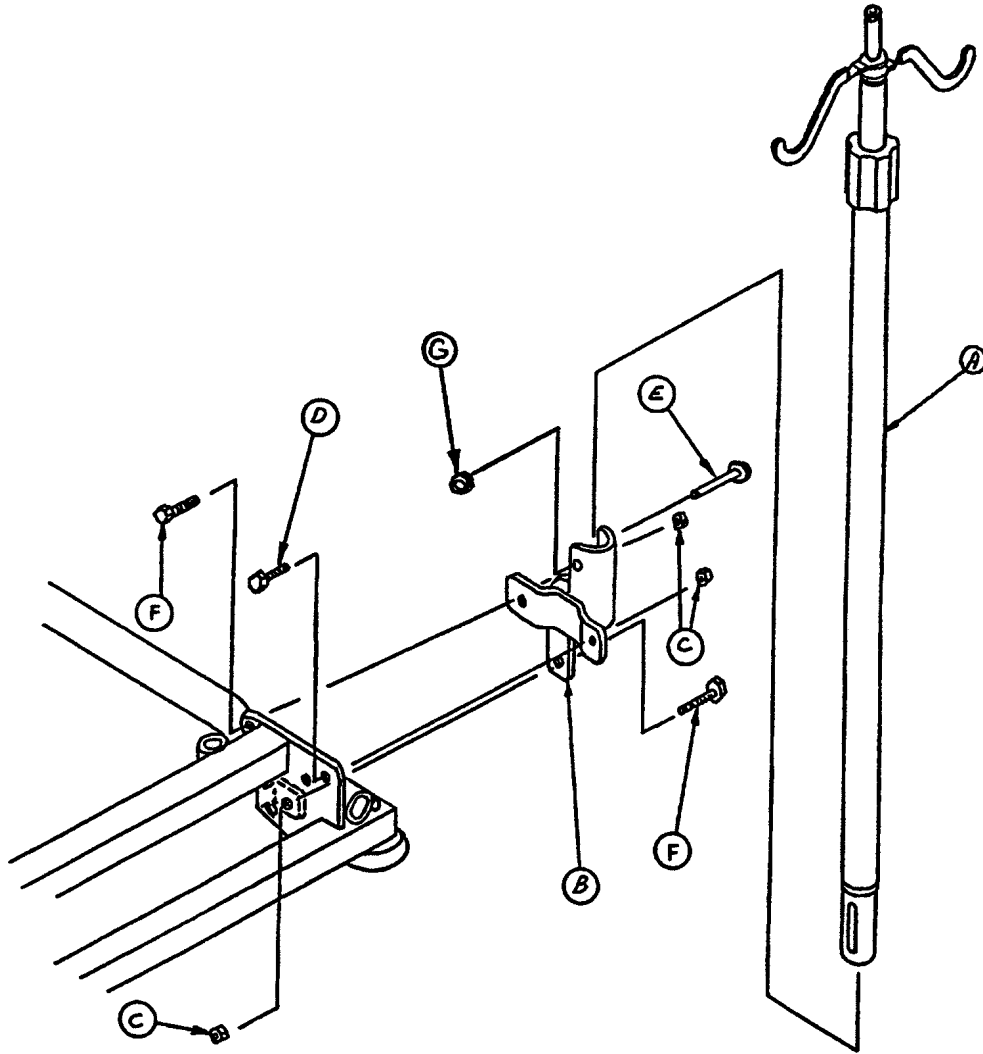
Item	Part No.	Part Name	Qty.
A	1020-32-100	Transfer Board Ass'y	1
B	721-24-46	Label	1
C	1010-32-98	Pivot	2
D	1010-224-33	Connecting Link Ass'y, Rt.	1
E	1010-232-16	Pivot Arm Ass'y, Right	2
F	28-93	Retaining Ring	4
H	3-50	Hex Hd. Cap Screw	2
J	11-224	Nylon Flat Washer	4
K	14-21	Nylon Flat Washer	2
L	4-156	Soc. Hd. Cap Screw	2
M	16-28	Nylock Hex Nut	2

721-26-96 & 721-26-97 Siderail Ass'y, Right & Left



Item	Part No.	Part Name	Qty.
A	1010-26-15	Top Rail	1
B	1010-26-34	Upright	4
C	1010-26-36	Upright, Bent	1
D	1010-26-66	Spacer	6
E	25-106	Semi-Tubular Rivet	6
F	721-26-84	Round Hole Plug	4
H	1010-26-35	Upright, Latch	1
J	1010-26-12	Bent Spindle Stop	1

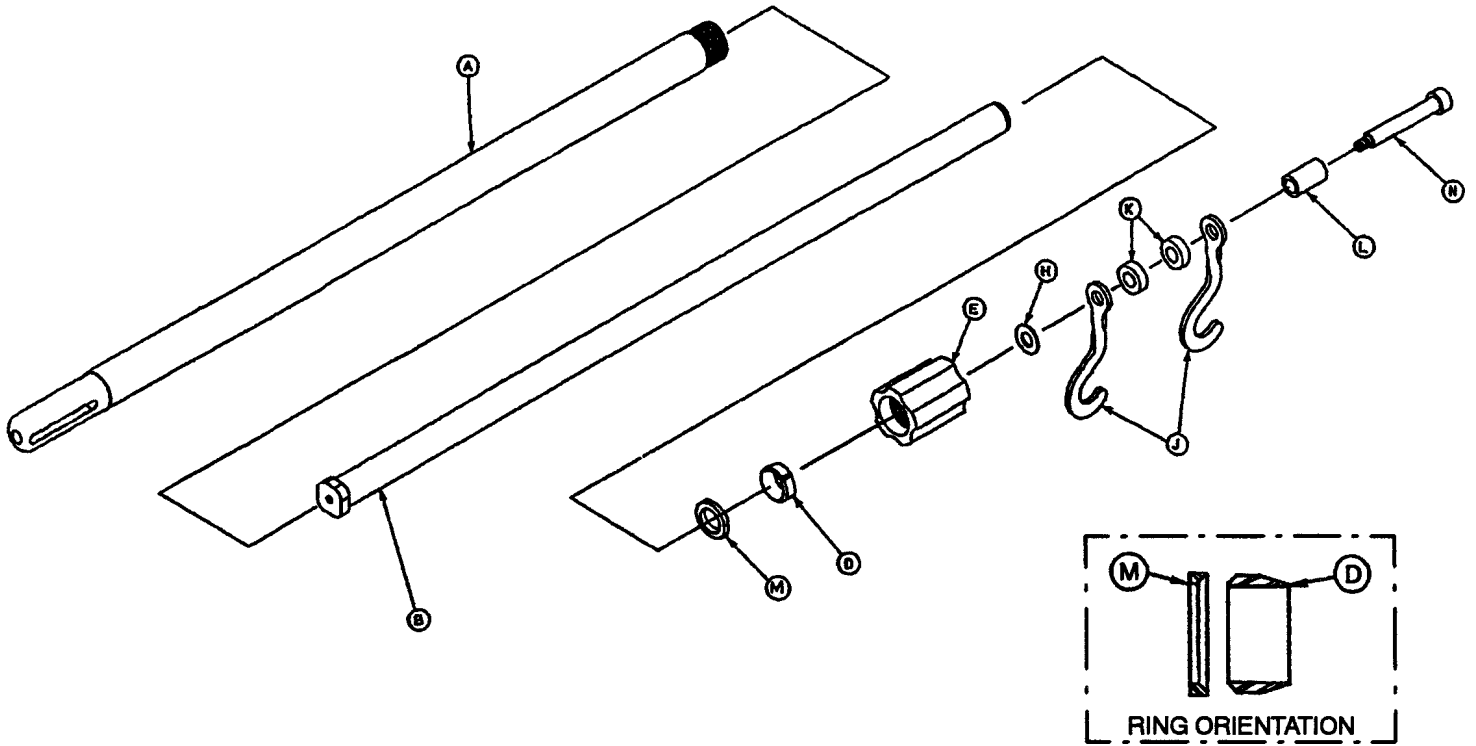
721-280 & 721-281 2-Stage I.V. Ass'y, Head & Foot



Item	Part No.	Part Name	Qty.
A	(page 36)	I.V. Pole Assembly	1
B	1001-259-5	I.V. Receptacle Ass'y	1
C	16-28	Lock Nut	3
D	3-54	Hex Hd. Cap Screw	1
E	4-91	But. Hd. Cap Screw	1
F	3-50	Hex Hd. Cap Screw	2
G	16-20	Self-Locking Nut	1
J	1001-59-40	I.V. Plug (not shown)	1

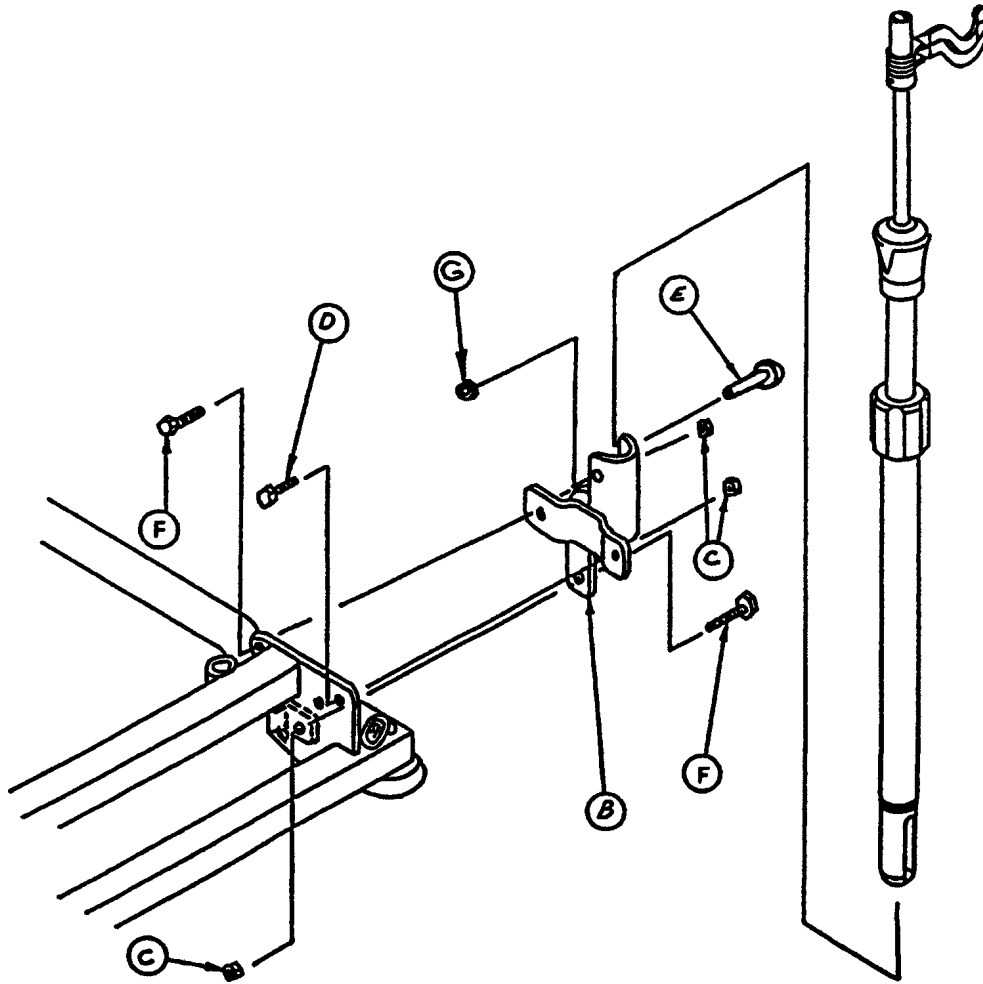
Replacement Kit Part Number 721-400-1

1211-110-10 2-Stage I.V. Pole Assembly



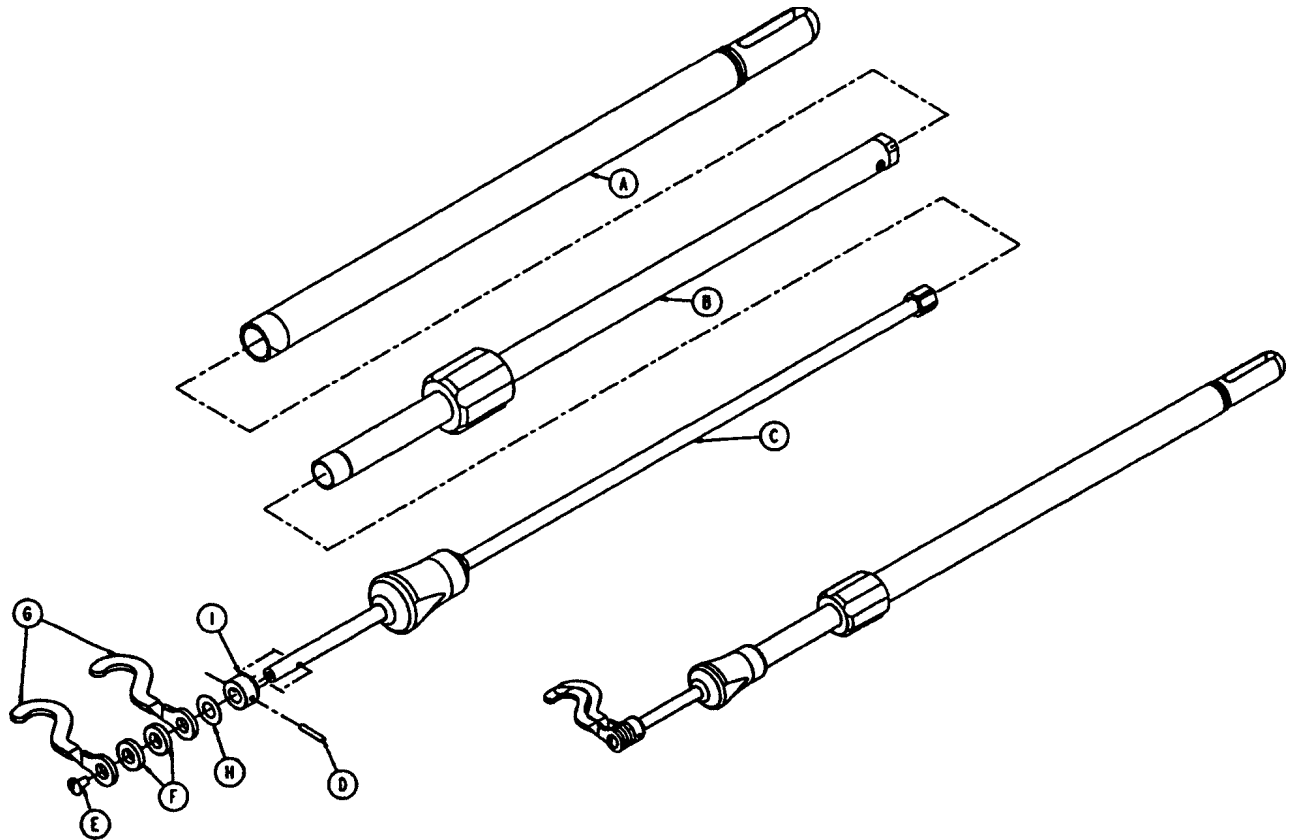
Item	Part No.	Part Name	Qty.
A	1001-59-32	Base Tube Assembly	1
B	1001-59-31	Extension Tube Assembly	1
D	1210-110-47	Lock Ring	1
E	1210-110-49	Lock Actuator	1
H	14-20	Nylon Flat Washer	As Req'd
J	1010-59-16	I.V. Hook	2
K	52-17	Nylon Spacer	2
L	926-400-62	Stop Sleeve	1
M	1211-110-46	Back-Up Ring	1
N	8-31	Shoulder Bolt	1

721-61 & 721-62 3-Stage I.V. Assembly, Head & Foot



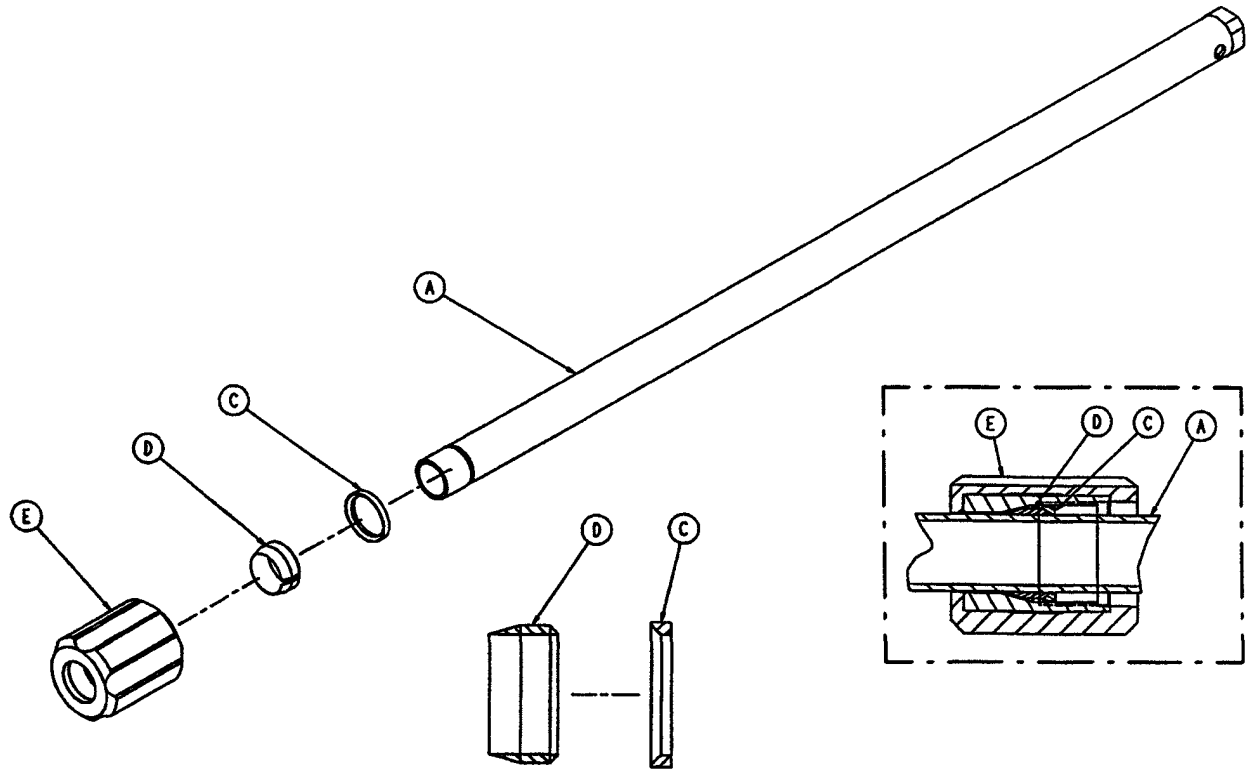
Item	Part No.	Part Name	Qty.
A	(page 38)	I.V. Pole Assembly	1
B	1001-259-5	I.V. Receptacle Ass'y	1
C	16-28	Lock Nut	3
D	3-54	Hex Hd. Cap Screw	1
E	4-91	But. Hd. Cap Screw	1
F	3-50	Hex Hd. Cap Screw	2
G	16-20	Self-Locking Nut	1

721-61-10 3-Stage I.V. Pole Assembly



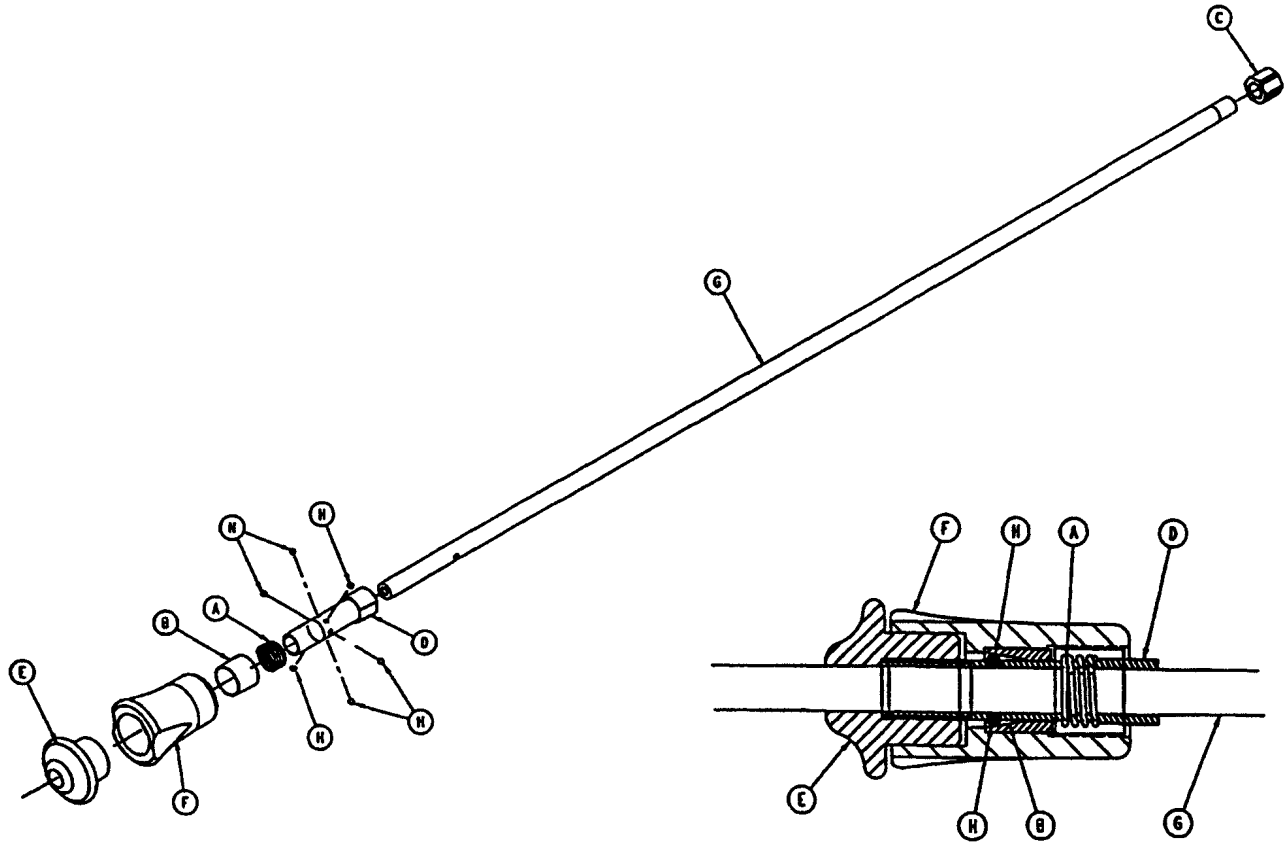
Item	Part No.	Part Name	Qty.
A	721-61-24	Base Tube Assembly	1
B	(page 39)	2nd Stage Assembly	1
C	(page 40)	3rd Stage Assembly	1
D	26-6	Roll Pin	1
E	7-4	Truss Hd. Mach. Screw	1
F	52-17	Nylon Spacer	2
G	1010-59-16	I.V. Hook	2
H	14-20	Nylon Flat Washer	1
I	1010-61-14	Collar	1

721-61-25 2nd Stage Assembly



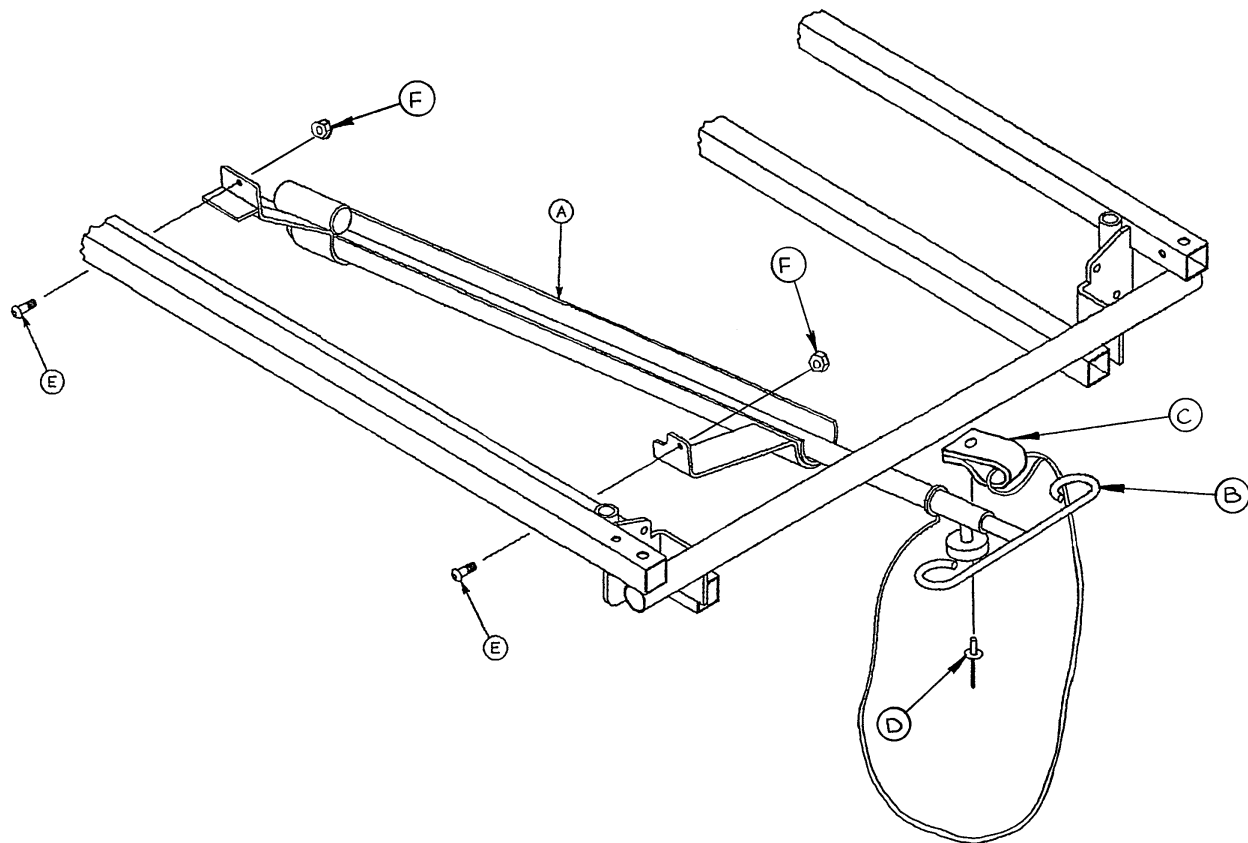
Item	Part No.	Part Name	Qty.
A	721-61-30	2nd Tube Assembly	1
C	1210-110-46	Back-Up Ring	1
D	1210-110-47	Lock Ring	1
E	1210-110-49	Lock Actuator	1

721-61-20 3rd Stage Assembly



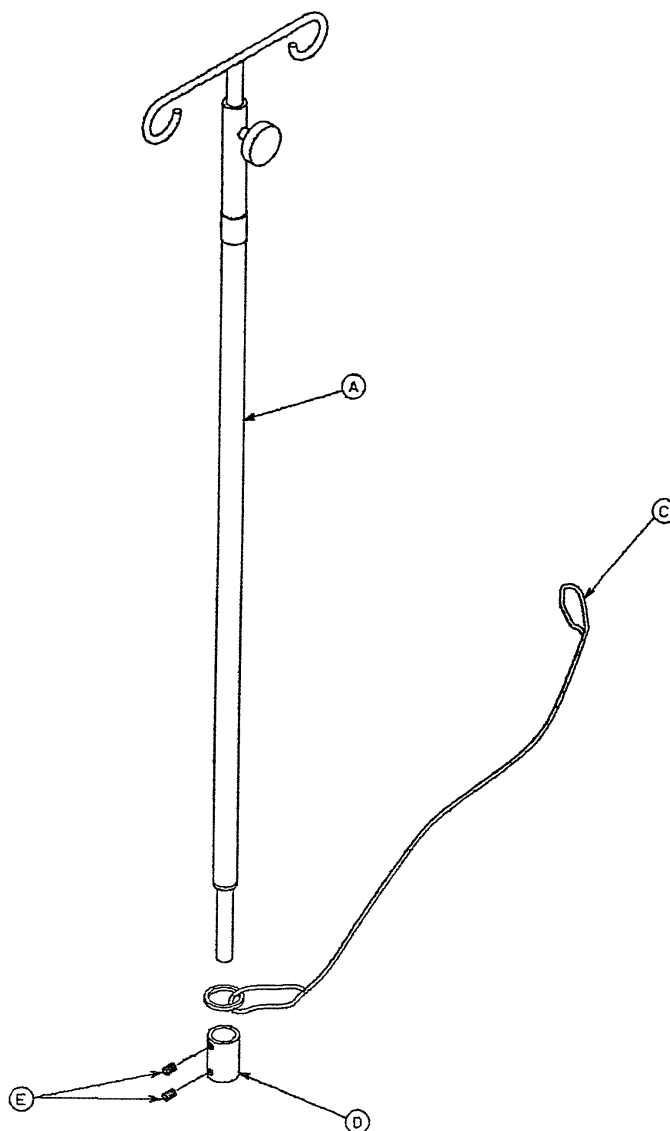
Item	Part No.	Part Name	Qty.
A	38-303	Spring	1
B	1010-61-13	Ball Retainer	1
C	1010-61-15	Stop Nut	1
D	1010-61-16	Retaining Shaft	1
E	1010-61-17	Thumb Knob	1
F	1010-61-18	Hand Guard	1
G	721-31-69	3rd Extension Rod	1
H	31-21	Ball	6

721-287 Tethered I.V. Pole Mounting Assembly



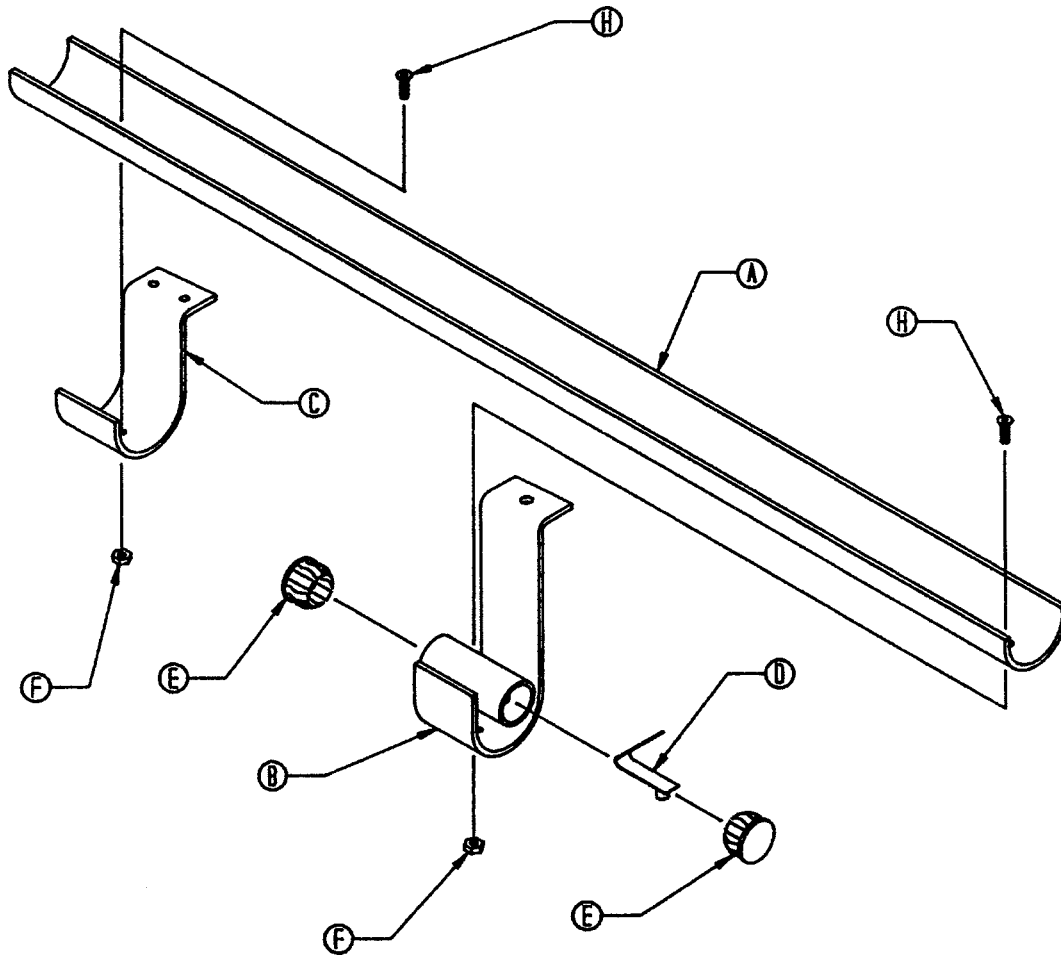
Item	Part No.	Part Name	Qty.
A	(page 43)	Trough Assembly	1
B	(page 42)	I.V. Pole Assembly	1
C	34-22	Cord Clamp	1
D	25-79	Pop Rivet	1
E	4-85	Soc. Hd. Cap Screw	2
F	16-3	Nylock Nut	2

1001-87-1 Tethered I.V. Pole Assembly



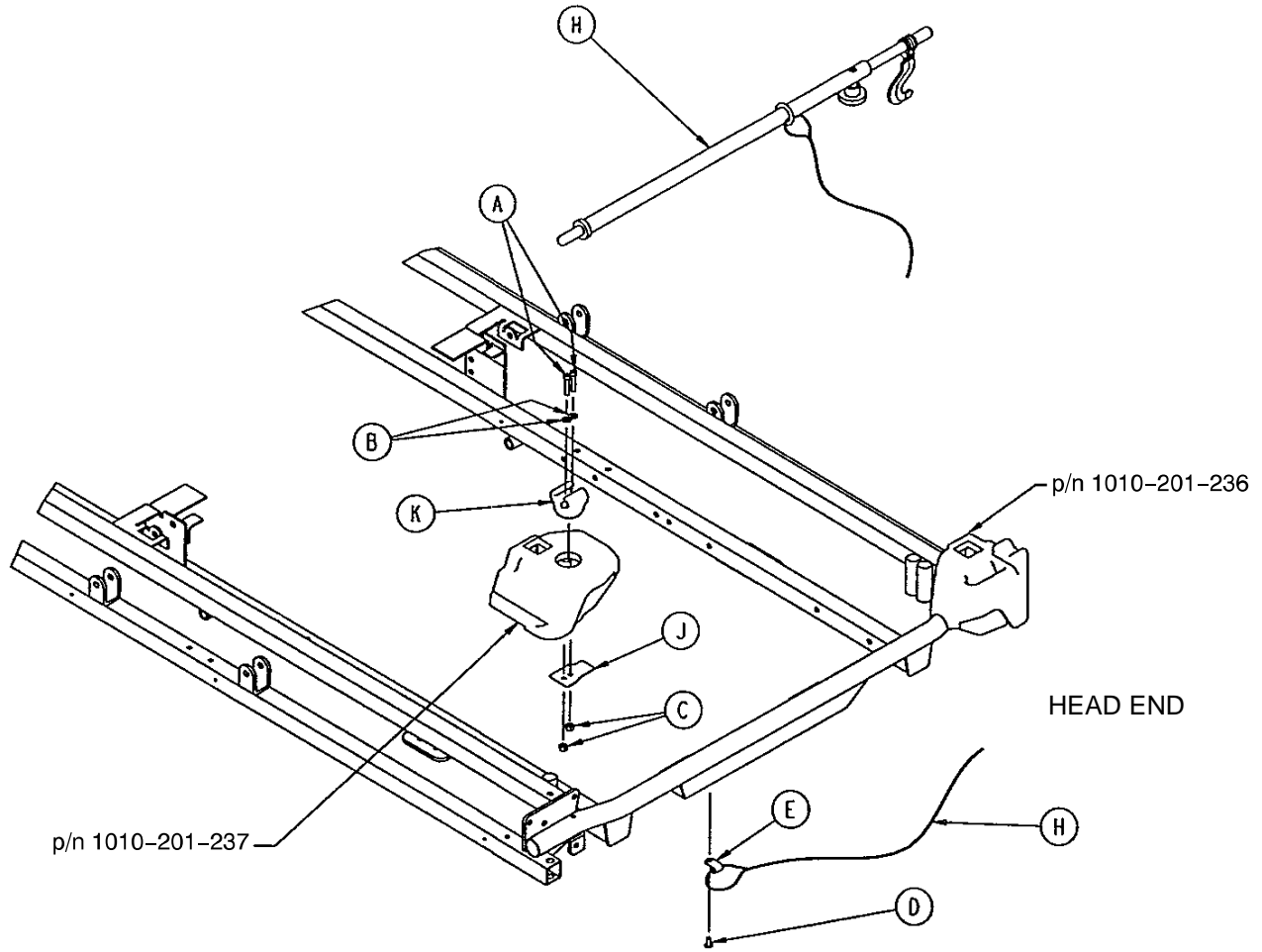
Item	Part No.	Part Name	Qty.
A	721-47-6	I.V. Holder	1
B	1001-87-14	Specification Label	1
C	1010-22-27	Cable Assembly	1
D	741-47-14	Retainer	1
E	21-16	Set Screw	2

1010-22-25 Tethered I.V. Pole Trough Assembly



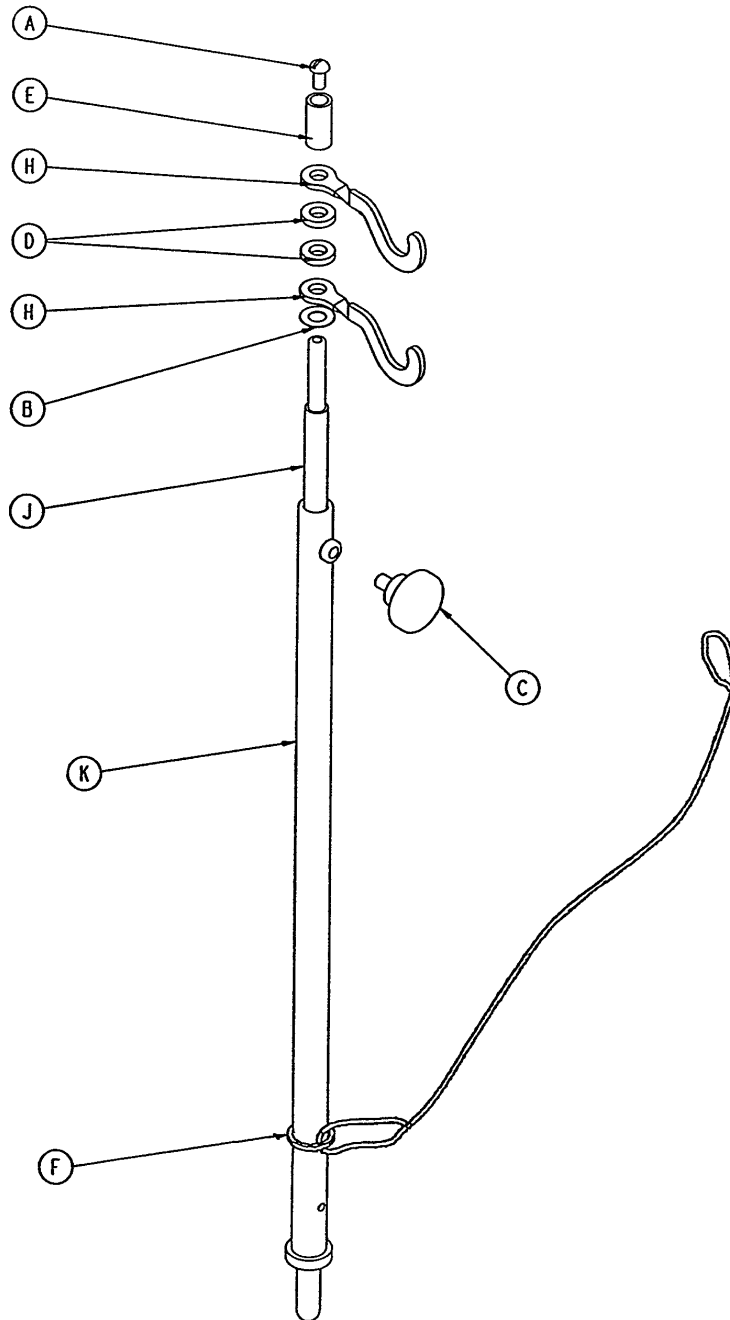
Item	Part No.	Part Name	Qty.
A	1010-22-19	I.V. Trough	1
B	1010-22-21	Long Bracket Ass'y	1
C	1010-22-24	Short Bracket	1
D	946-40-110	Lock Clip	1
E	37-2	Tube Plug	2
F	16-14	Nylock Hex Nut	2
H	1-22	Flat Hd. Mach. Screw	2

721-117 Tethered I.V. Pole Mounting Assembly



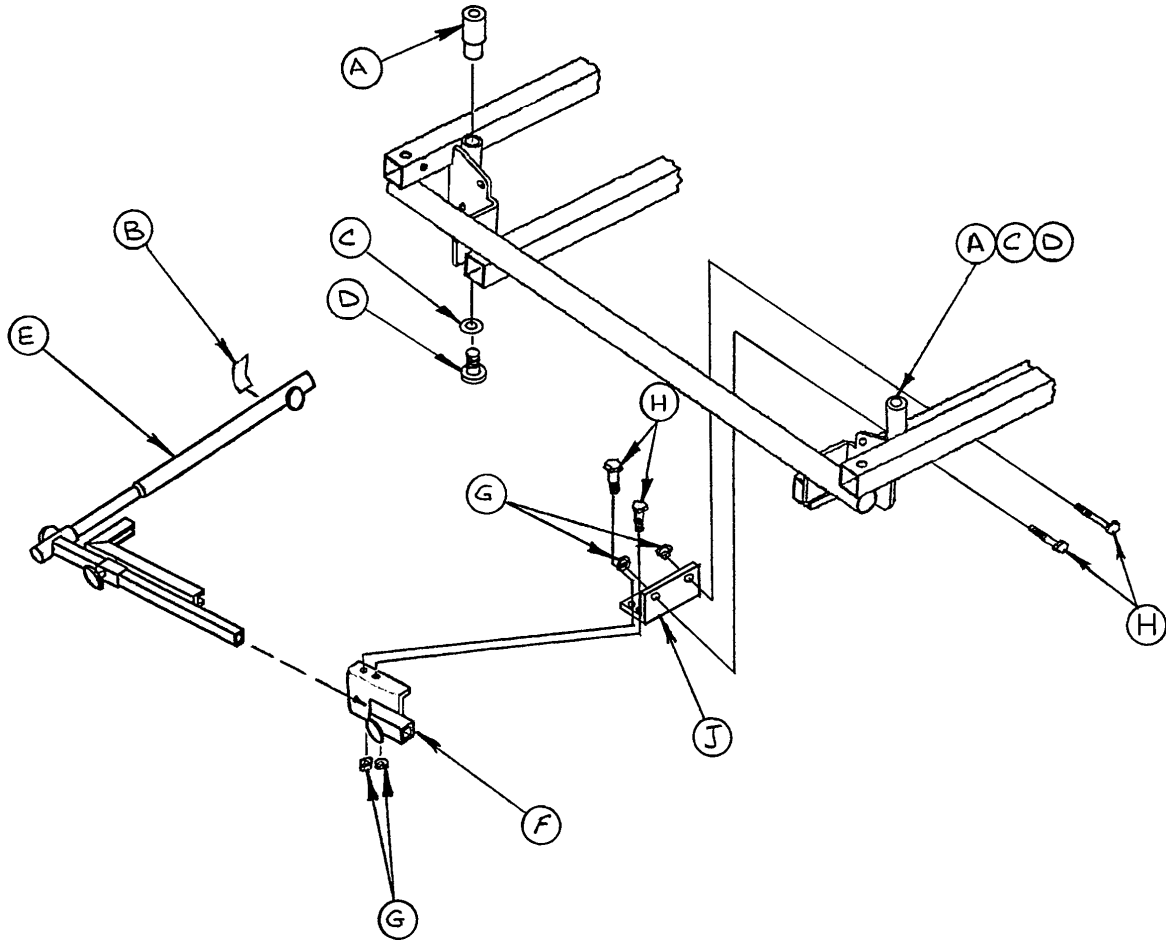
Item	Part No.	Part Name	Qty.
A	4-66	Soc. Hd. Cap Screw	2
B	11-16	Washer	2
C	16-3	Fiberlock Nut	2
D	25-79	Rivet	1
E	34-22	Cable Clamp	1
F	1001-59-40	I.V. Plug	1
H	(page 43.2)	Tethered I.V. Pole Assembly	1
J	1211-117-21	Backing Plate	1
K	1211-117-22	I.V. Clip	1

1211-117-10 Tethered I.V. Pole Assembly



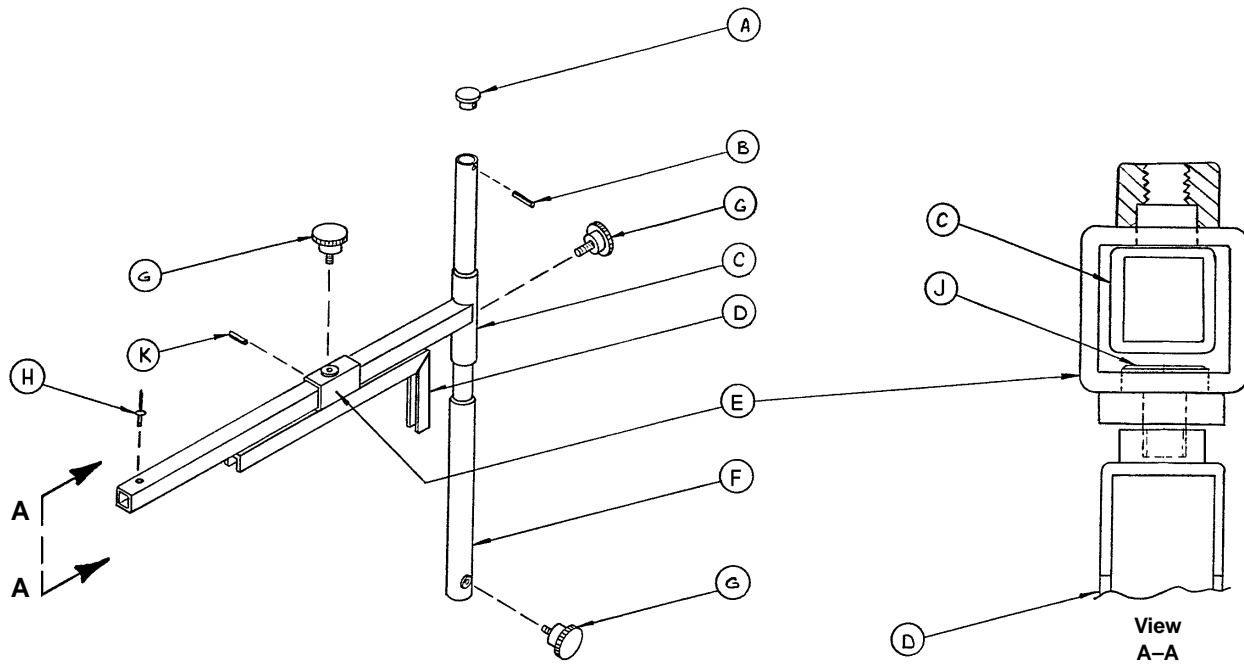
Item	Part No.	Part Name	Qty.
A	4-232	Button Hd. Cap Screw	1
B	14-20	Nylon Washer	1
C	24-53	Knob	1
D	52-17	Spacer	2
E	926-400-62	Stop Sleeve	1
F	1010-22-27	Cable Assembly	1
H	1010-59-16	I.V. Hook	2
J	1211-117-11	Extension Rod	1
K	1211-117-12	Base Tube Weldment	1

1001-70-1 C-Spine Cassette Holder Assembly



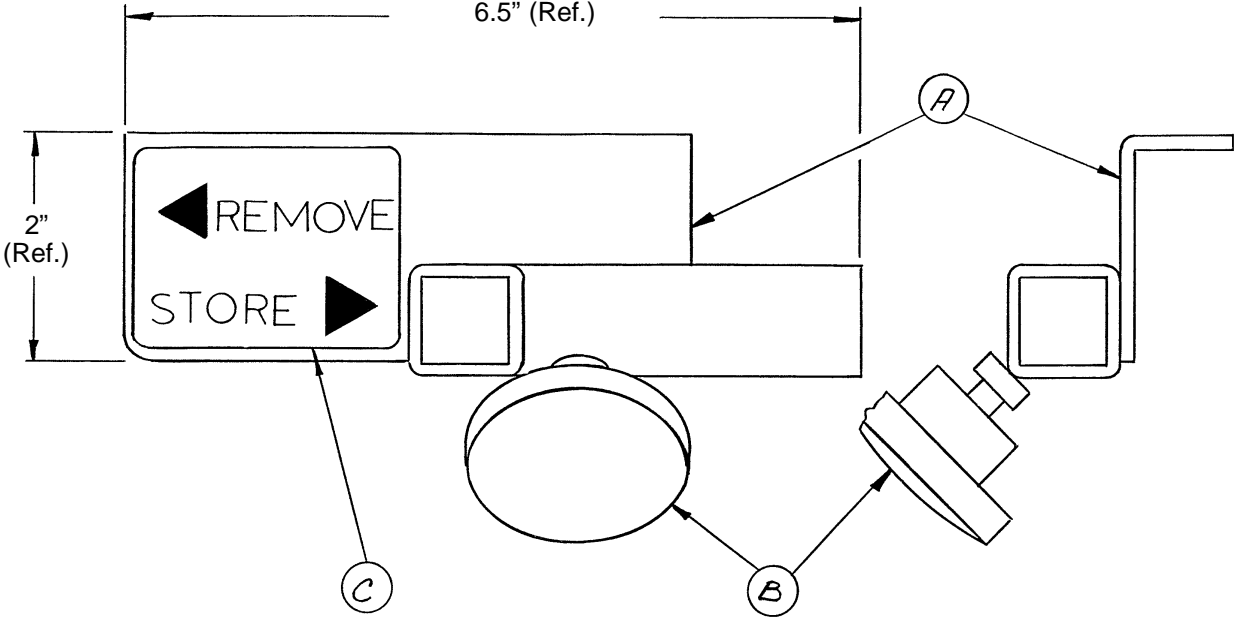
Item	Part No.	Part Name	Qty.
A	1010-70-25	I.V. Adaptor	2
B	1010-70-18	Specification Label	1
C	11-3	Flat Washer	2
D	4-91	But. Hd. Cap Screw	2
E	(page 45)	Support Pole Assembly	1
F	(page 46)	Storage Bracket Ass'y	1
G	16-5	Nylock Nut	4
H	3-50	Hex Hd. Cap Screw	4
J	1001-70-11	Attachment Bracket	1

1010-70-10 C-Spine Support Pole Assembly



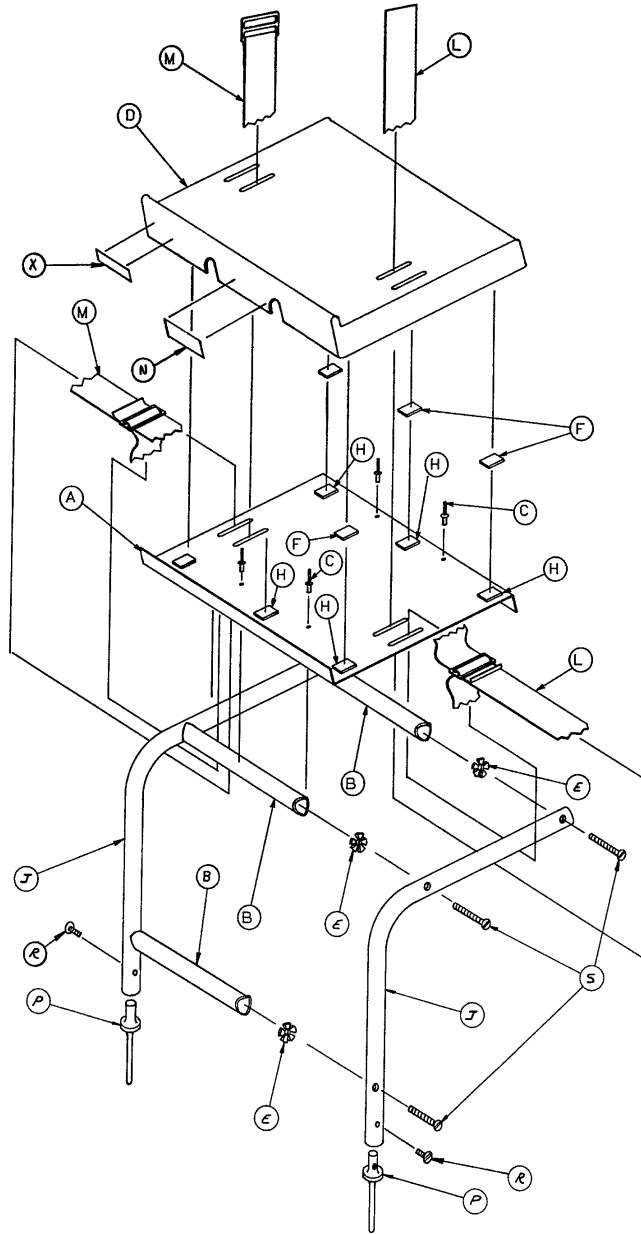
Item	Part No.	Part Name	Qty.
A	1010-70-33	Support Tube Cap	1
B	26-6	Roll Pin	1
C	1010-70-34	Support Arm Weldment	1
D	1010-70-42	Cassette Holder Weldment	1
E	1010-70-50	Adjustment Tube Weldment	1
F	1010-70-30	Base Tube Weldment	1
G	1010-70-45	Knob	3
H	25-55	Pop Rivet	1
J	1010-70-44	Pivot Pin	1
K	26-5	Roll Pin	1

1010-70-19 C-Spine Storage Bracket Assembly



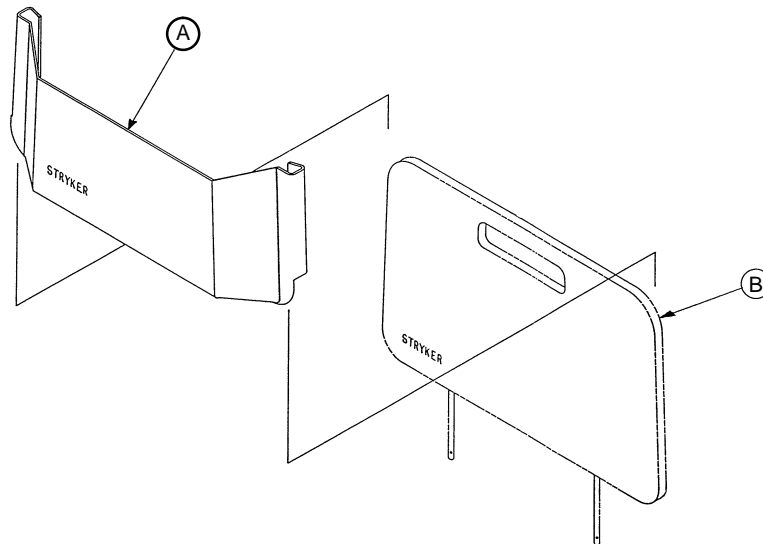
Item	Part No.	Part Name	Qty.
A	1010-70-20	Storage Bracket Weldment	1
B	1010-70-45	Knob	1
C	1010-70-23	Storage Label	1

926-39-10 Defibrillator Tray Assembly



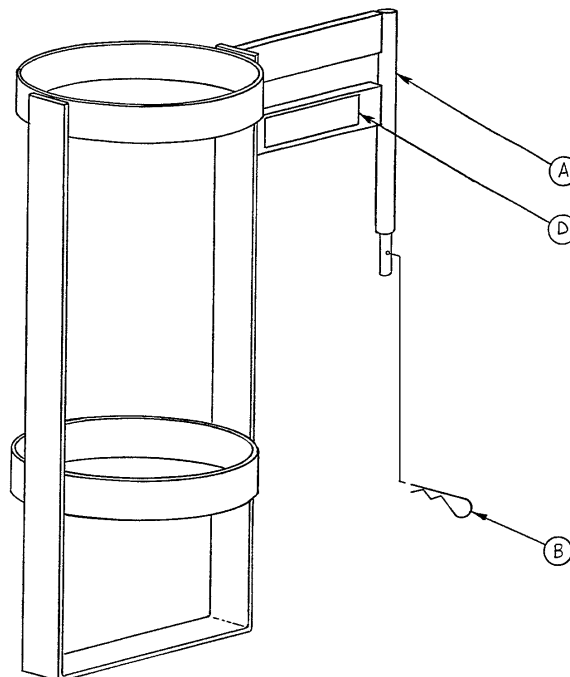
Item	Part No.	Part Name	Qty.
A	946-39-4	Tray	1
B	926-39-16	Crosstube	3
C	25-55	Rivet	4
D	926-39-9	Cover	1
E	18-6	Umbrella Nut	6
F	7900-1-143	Dual Lock	6
H	7900-1-145	Dual Lock	6
J	946-39-3	Support Tube	2
K	926-1-82	Label	1
L	390-57-12	Long Strap	1
M	390-57-13	Short Strap	1
N	946-1-283	Label	1
P	926-39-15	Holder	2
R	2-44	Screw	2
S	2-25	Rd. Hd. Mach. Screw	6

926-40-10 Foot Board/Chartholder Assembly



Item	Part No.	Part Name	Qty.
A	946-28-11	Chart Holder	1
B	946-29-6	Foot Board	1

1020-30 Optional Upright Oxygen Bottle Holder Ass'y



Item	Part No.	Part Name	Qty.
A	1020-30-11	Upright Bottle Holder	1
B	27-12	Cotter Pin	1
D	1020-30-17	Specification Label	1

Replacement Parts and Kits

<u>PART NAME</u>	<u>PART NUMBER</u>
Ankle Restraint Straps	946-43
Body Restraint Straps	390-19
Wrist Restraint Straps	946-44
Chest Restraint Straps	1010-58
Full Patient Security Package	1010-77
Short SAFR™ Patient Transfer Board	721-239
Long SAFR™ Patient Transfer Board	721-234
Removable Standard I.V. Pole	390-25
Tethered I.V. Pole	720-287
2-Stage Permanent I.V. Pole Kit	721-400-1
3-Stage Permanent, I.V. Pole, Head End	721-61
3-Stage Permanent, I.V. Pole, Foot End	721-62
3" Enhanced Comfort Mattress	721-248-6
3" Low Friction Mattress	1059-324-40
4" Enhanced Comfort Mattress	721-247-6
4" Low Friction Mattress	1059-424-40
Defibrillator/Equipment Tray	926-39
Foot Board/Defibrillator Tray	926-40-100
Head/Foot Board (2)	946-29-100
Foot Extension/Defibrillator Tray	1010-50-100
I.V. Caddy	1050-1-100
C-Spine Cassette Holder	1001-70-1
Caster Cover Kit	1010-56-100

Warranty

Limited Warranty:

Stryker Medical Division, a division of Stryker Corporation, warrants to the original purchaser that its products should be free from defects in material and workmanship for a period of one (1) year after date of delivery. Stryker's obligation under this warranty is expressly limited to supplying replacement parts and labor for, or replacing, at its option, any product which is, in the sole discretion of Stryker, found to be defective. Stryker warrants to the original purchaser that the frame and welds on its beds will be free from structural defects for as long as the original purchaser owns the bed. If requested by Stryker, products or parts for which a warranty claim is made shall be returned prepaid to Stryker's factory. Any improper use or any alteration or repair by others in such manner as in Stryker's judgement affects the product materially and adversely shall void this warranty. No employee or representative of Stryker is authorized to change this warranty in any way.

This statement constitutes Stryker's entire warranty with respect to the aforesaid equipment. STRYKER MAKES NO OTHER WARRANTY OR REPRESENTATION, EITHER EXPRESSED OR IMPLIED, EXCEPT AS SET FORTH HEREIN. THERE IS NO WARRANTY OF MERCHANTABILITY AND THERE ARE NO WARRANTIES OF FITNESS FOR ANY PARTICULAR PURPOSE. IN NO EVENT SHALL STRYKER BE LIABLE HEREUNDER FOR INCIDENTAL OR CONSEQUENTIAL DAMAGES ARISING FROM OR IN ANY MANNER RELATED TO SALES OR USE OF ANY SUCH EQUIPMENT.

To Obtain Parts and Service:

Stryker products are supported by a nationwide network of dedicated Stryker Field Service Representatives. These representatives are factory trained, available locally, and carry a substantial spare parts inventory to minimize repair time. Simply call your local representative, or call Stryker Customer Service at (800) 327-0770.

Supplemental Warranty Coverage:

Stryker has developed a comprehensive program of extended warranty options designed to keep your equipment operating at peak performance at the same time it eliminates unexpected costs. We recommend that these programs be activated *before* the expiration of the new product warranty to eliminate the potential of additional equipment upgrade charges. Stryker offers the following Supplemental Warranties:

Extended (Parts and Labor)

- All replacement parts (excluding mattresses and consumable items)
- Labor and travel for *all* scheduled and unscheduled calls
- Annual Preventive Maintenance Inspections and repairs
- JCAHO paperwork for preventive maintenance
- Priority Emergency Service

Standard (Labor Only):

- Labor and travel for *all* scheduled and unscheduled calls
- Biannual Preventive Maintenance Inspections and repairs
- JCAHO paperwork for preventive maintenance
- Priority Emergency Service

Basic (Parts Only):

- All replacement parts (excluding mattresses and consumable items)
- Priority Emergency Service

Please call your local representative, or call (800) 327-0770 for further information

Warranty

Return Authorization:

Merchandise cannot be returned without approval from the Stryker Customer Service Department. An authorization number will be provided which must be printed on the returned merchandise. Stryker reserves the right to charge shipping and restocking fees on returned items.

SPECIAL, MODIFIED, OR DISCONTINUED ITEMS NOT SUBJECT TO RETURN.

Damaged Merchandise:

ICC Regulations require that claims for damaged merchandise must be made with the carrier within fifteen (15) days of receipt of merchandise. **DO NOT ACCEPT DAMAGED SHIPMENTS UNLESS SUCH DAMAGE IS NOTED ON THE DELIVERY RECEIPT AT THE TIME OF RECEIPT.** Upon prompt notification, Stryker will file a freight claim with the appropriate carrier for damages incurred. Claim will be limited in amount to the actual replacement cost. In the event that this information is not received by Stryker within the fifteen (15) day period following the delivery of the merchandise, or the damage was not noted on the delivery receipt at the time of receipt, the customer will be responsible for payment of the original invoice in full.

Claims for any short shipment must be made within thirty (30) days of invoice.



6300 Sprinkle Road, Kalamazoo, MI 49001-9799

(800) 327-0770

DH 10/97 720-90-25 REV D