

stryker[®]
Medical

721 Transport Stretcher

Maintenance Manual

For Parts or Technical Assistance
800-327-0770

Table of Contents

Introduction	2
Specifications	2
Warning / Caution / Note Definition	2
Stretcher Operation	3
SAFR™ Board Operation	4
Service Information	5
Maintenance Checklist	6
Troubleshooting Guide	7
Assembly Drawings and Parts Lists	
Caster/Brake Assembly	8
Base Assembly with Foot Control Jacks	9, 10
Basic Litter Assembly	11, 12
Pneumatic Fowler Litter Assembly	13
Manual Fowler Litter Assembly	14
Transfer System Assembly, Left	15
Transfer System Assembly, Right	16
Fowler Assembly	17
Footsection Assembly	17
Siderail Assembly	18
I.V. Pole Assembly	19
Repair Parts/Equipment Return	20
Warranty	21

Introduction

INTRODUCTION

This manual is designed to assist you with the operation and maintenance of the Renaissance Series Advanced Transport Stretcher. Read it thoroughly before using the equipment. Keep the manual for future reference.

SPECIFICATIONS

Maximum Weight Capacity	500 pounds
Overall Bed Length \ Width	81"/30"
Minimum \ Maximum Bed Height	27.5"/36.5"
Bed Weight w/accessories	250 pounds (average)
Fowler Angle	0° to 90°
Trendelenburg \ Reverse Trendelenburg	-12° to 12°

WARNING / CAUTION / NOTE DEFINITION

The words WARNING, CAUTION and NOTE carry special meanings and should be carefully reviewed.

WARNING

The personal safety of the patient or user may be involved. Disregarding this information could result in injury to the patient or user.

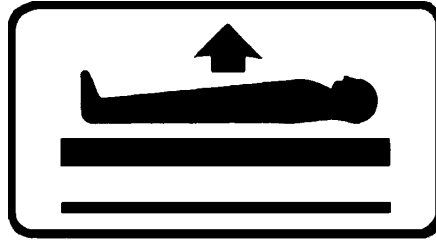
CAUTION

These instructions point out special procedures or precautions that must be followed to avoid damaging the equipment.

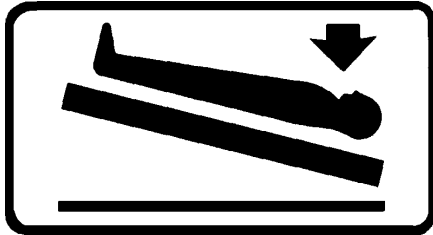
NOTE

This provides special information to make maintenance easier or important instructions clearer.

Stretcher Operation



Raise Bed, Pump pedal repeatedly

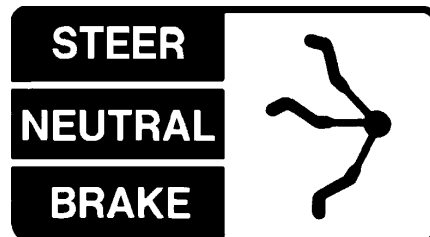


Head End Down, Trendelenburg



Foot End Down, Reverse Trendelenburg

Lower both ends of the bed at the same time by pushing both pedals at once.



- Steer position engages direction wheel lock.
- Neutral disengages both brake and steer functions.
- Brake locks all four casters with one motion.

PATIENT POSITIONING

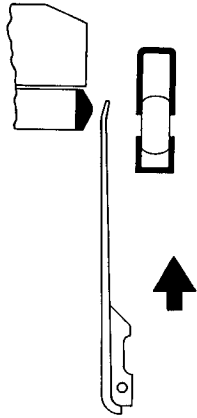
To safely lower the manual Fowler, support the head end with one hand and release the latching bracket by lifting up on the tabs located on either side of the Fowler.

CAUTION

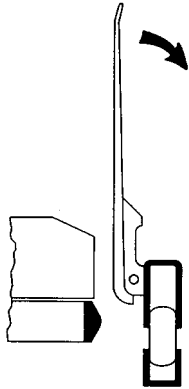
To avoid pinching hands while positioning the manual Fowler, **do not** lower the FOWler by grasping the middle of the latching mechanism.

Stretcher Operation

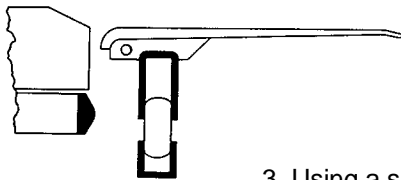
USING THE SAFR™ PATIENT TRANSFER BOARD



1. Raise the board from the bottom while lifting from the top using one of the tabs located at either end of the board.



2. Pivot the board so that it rests securely on the mating surface.



3. Using a sheet, draw the patient onto the mating stretcher or bed.

WARNING

Always lock the brakes on all stretchers, beds, etc. being used to transfer a patient.

Always be certain the transfer board is placed securely on the surface of the mating stretcher or bed.

Service Information

CLEANING

1. Hand wash all surfaces of the stretcher with warm water and mild detergent. Dry thoroughly.
2. Clean Velcro **AFTER EACH USE**. Saturate Velcro with disinfectant and allow disinfectant to evaporate. (Appropriate disinfectant for nylon Velcro should be determined by the hospital.)

PREVENTATIVE MAINTENANCE*

- Tighten all fasteners regularly.
- Check roll pins for proper positioning.
- Check collars or sleeves for proper positioning. Tighten if necessary.
- Check lubrication of cranks, pivots and casters.
- Check brake cam pad for wear. Replace if necessary.

* Recommended every 90 days.

DROP RATE ADJUSTMENT

1. **To slow jack descent** – Turn needle valve clockwise.
2. **To increase jack descent** – Turn needle valve counterclockwise.

HOW TO ORDER REPLACEMENT PARTS

1. Identify your equipment.
 - a. Serial Number
 - b. Model Number(This information is located on the base cover.)
2. Describe problem that needs correcting.

Identify component part number(s).

— or —

 - a. Brief description of problem.
 - b. Location of problem.
 - c. Information that is pertinent to the problem.

NOTE: All parts shown are not individually available for purchase.

HOW TO RETURN EQUIPMENT

1. The Customer Service Department or Regional Sales Manager must authorize the return of any equipment in advance.
2. All returns must be accompanied by shipper indicating the reason of return and the name of the individual who authorized the return.
3. All shipments must be prepaid.
4. All shipments are subject to acceptance and evaluation by the Stryker Corporation and become the property thereof.

Any questions should be addressed to your Stryker Representative or to Stryker Customer Service Medical Division at (800) 327-0770.

Preventative Maintenance

MONTHLY CHECKLIST

- _____ All fasteners secure
- _____ Siderails move and latch properly
- _____ All casters lock with brake pedal engaged
- _____ Steer function working properly
- _____ All casters secure with no excessive play
- _____ Head and foot boards secure in frame ends
- _____ No cracks or splits in head and foot boards
- _____ I.V. pole intact and operating properly
- _____ O2 bottle holder intact and operating properly
- _____ Fowler operates and latches properly
- _____ Trendelenburg/Reverse Trendelenburg operating properly
- _____ No rips or cracks in mattress cover
- _____ Transfer boards intact and operating properly
- _____ Ground chain intact

BIANNUAL CHECKLIST

- _____ Complete the checklist above
- _____ No leaks at hydraulic connections
- _____ No hoses worn, kinked or leaking
- _____ Hydraulic oil level sufficient
- _____ Brake cam pad not excessively worn

Serial No. _____

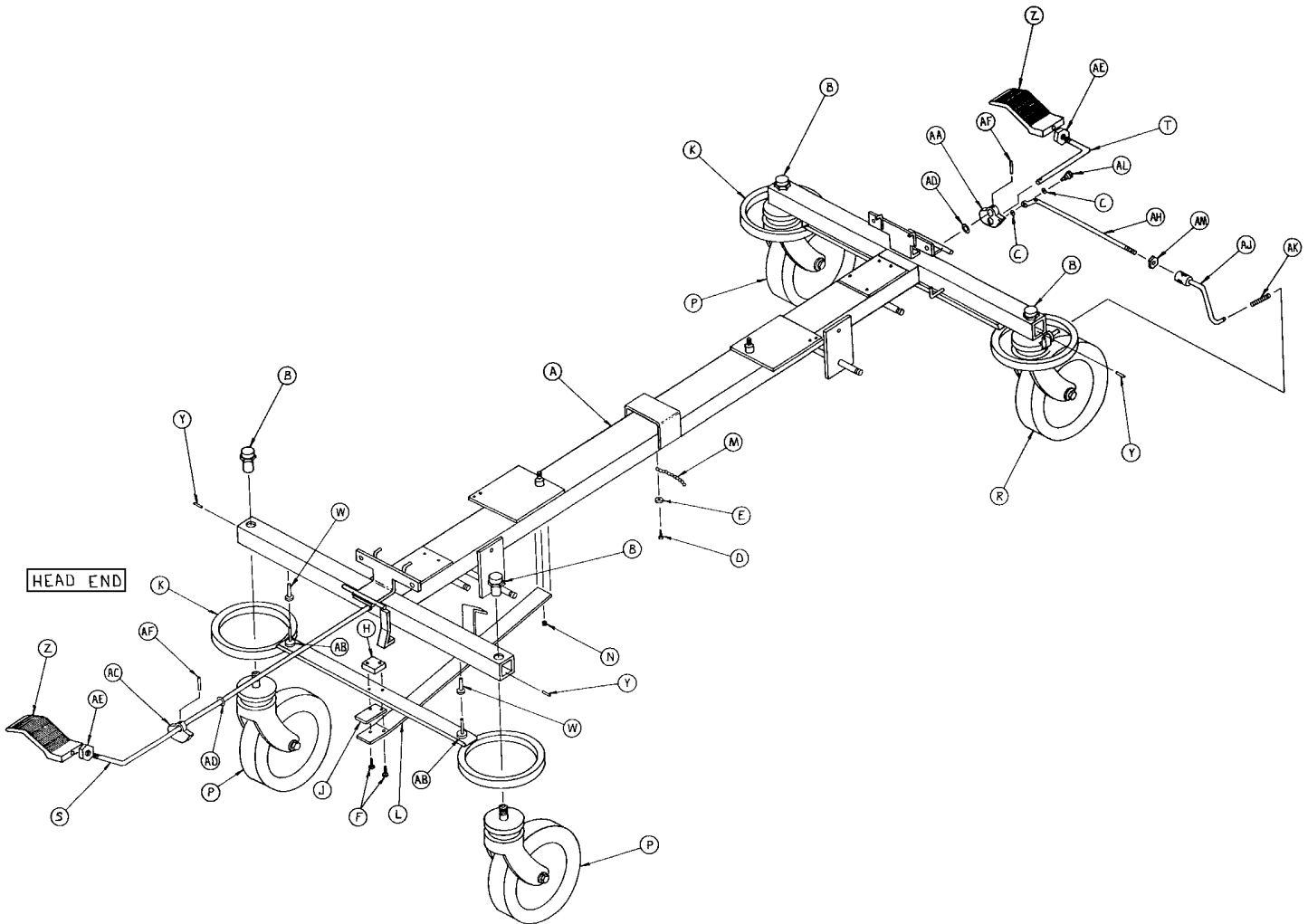
Completed By: _____

Date: _____

Troubleshooting Guide

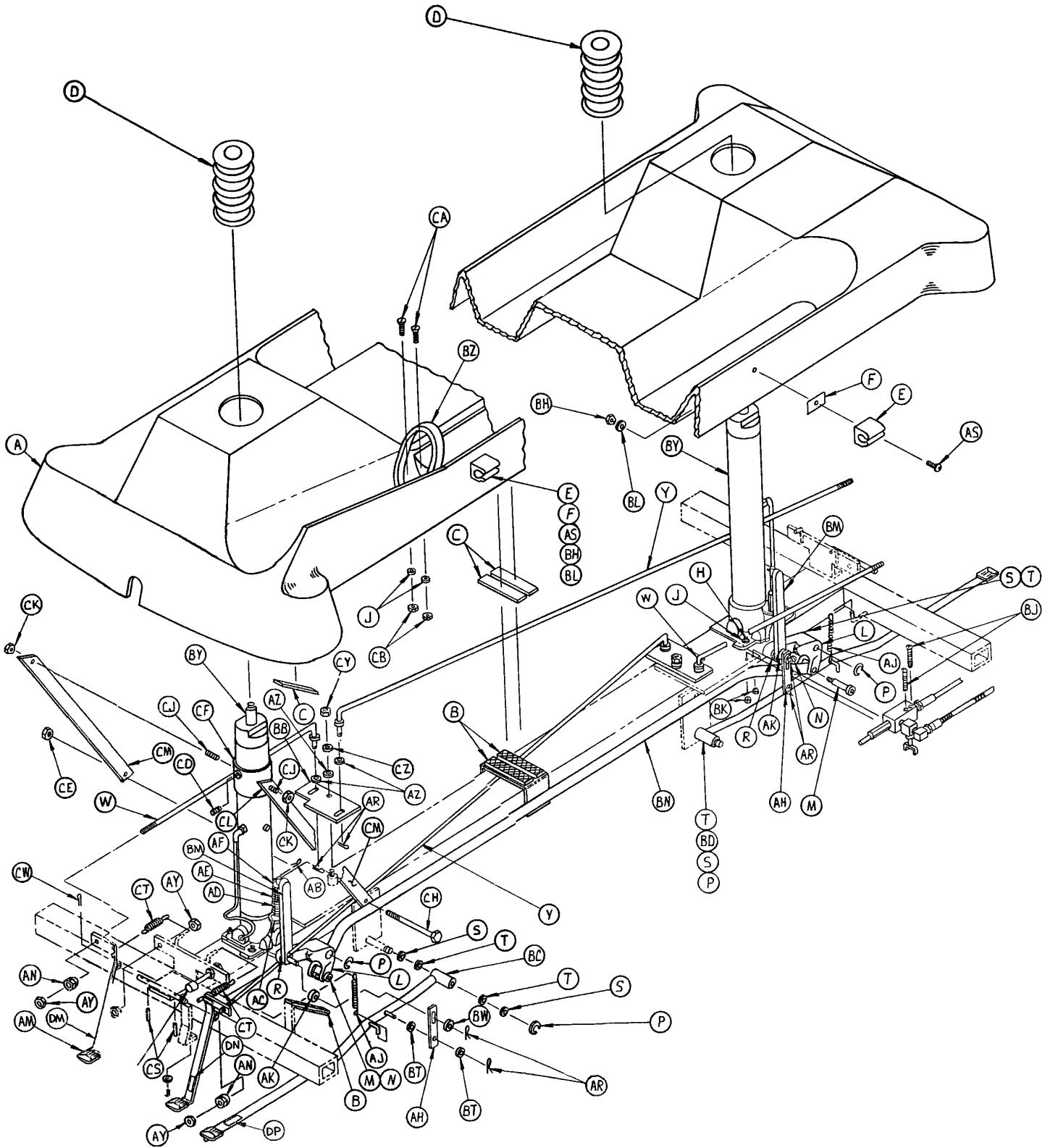
PROBLEM	CAUSE	CORRECTION
<ul style="list-style-type: none"> Jack will not raise to full height. 	<ul style="list-style-type: none"> Reservoir low on hydraulic fluid. 	<ul style="list-style-type: none"> Lower jack completely. Remove plug on side of jack and add hydraulic fluid up to fill hole. <p>NOTE: It may be necessary to prime pump. To prime pump, remove pump link (<i>CAUTION</i>: pump link is spring loaded) and remove spring. To remove air, actuate pump by hand, making sure that pump piston bottoms. Reassemble and check for leaks.</p>
<ul style="list-style-type: none"> One end of stretcher rises much slower than other end. Jacks sink. 	<ul style="list-style-type: none"> Air in pump piston. Lever assembly is in contact with valve stem on manifold assembly. Defective valve. Defective jack. Internal leakage of oil past a valve or seal. 	<ul style="list-style-type: none"> Follow priming instructions above. Adjust length of control rod so that there is a slight gap between lever and valve stem. Fully elevate jack. Close needle valve by turning clockwise. If jack no longer sinks, needle valve is defective. Return to Stryker for replacement. Field repair is not recommended Fully elevate jack. Close needle valve by turning clockwise. If jack continues to sink, jack is defective. Return to Stryker for replacement. Field repair is not recommended. Make sure all valves are fully closed by depressing appropriate pedal, then release. Make sure there is a slight gap between the lever ass'y and the valve stem. Close the needle valve completely. If the drift stops, the leakage is in the release valve and the jack should be replaced. Return to Stryker for replacement. Field repair is not recommended. If the drift cannot be stopped, the jack(s) should be replaced. Return to Stryker for replacement. Field repair is not recommended.
<ul style="list-style-type: none"> Jack will not come down. 	<ul style="list-style-type: none"> Valve support is loose and out of position. Foreign particles lodged in valve stem. 	<ul style="list-style-type: none"> Reposition valve support and tighten set screws. Hold valve open and manually raise and lower the litter several times. Return to Stryker for jack replacement if problem is not resolved.

721-1-246 Caster Base Assembly



Item	Part No.	Part Name	Qty.	Item	Part No.	Part Name	Qty.
A	721-1-295	Base Weldment Assembly	1	T	721-1-218	Brake Rod, Ft. End	1
B	390-1-270	Caster Nut	4	W	946-1-116	Brake Bar Bushing	4
C	14-2	Nylon Washer	2	Y	26-5	Roll Pin (1/8 OD x 5/8)	4
D	23-25	Self Tapping Scr. (#10 x 1/2)	1	Z	721-1-243	Brake Pedal, Machined	2
E	11-1	Flat Washer (7/32 ID x 7/16 OD x 3/64)	1	AA	721-1-239	Brake Cam, Mach., Ft.	1
F	3-3	H. Hd. Cap Scr. (1/4-20 x 1)	4	AB	946-1-115	Brake Cushion	4
H	390-1-119	Plate Cam Pad	2	AC	721-1-225	Brake Cam, Mach., Hd.	1
J	390-1-14	Cam Wear Strip	2	AD	14-10	Nylon Washer (1/2 ID x 7/8 OD by 1/64)	As Req.
K	390-1-111	Caster Brake Assembly	2	AE	15-26	Hex Jam Nut	2
L	721-1-213	Jumbo Brake Spring Bar	2	AF	26-70	Roll Pin	2
M	390-1-157	Ground Chain	1	AH	721-1-187	Linkage Bar, Left	1
N	21-37	Set Screw (5/16-18 x 3/8)	2	AJ	721-1-230	Linkage Bar Assembly	1
P	946-1-276	8" Carpet Caster Assembly	3	AK	38-211	Spring	1
R	2020-46-220	8" Caster Assembly	1	AL	8-11	H. Soc. Hd. Shldr. Scr.	1
S	721-1-215	Brake Rod, Hd. End	1	AM	15-32	Hex Jam Nut	1

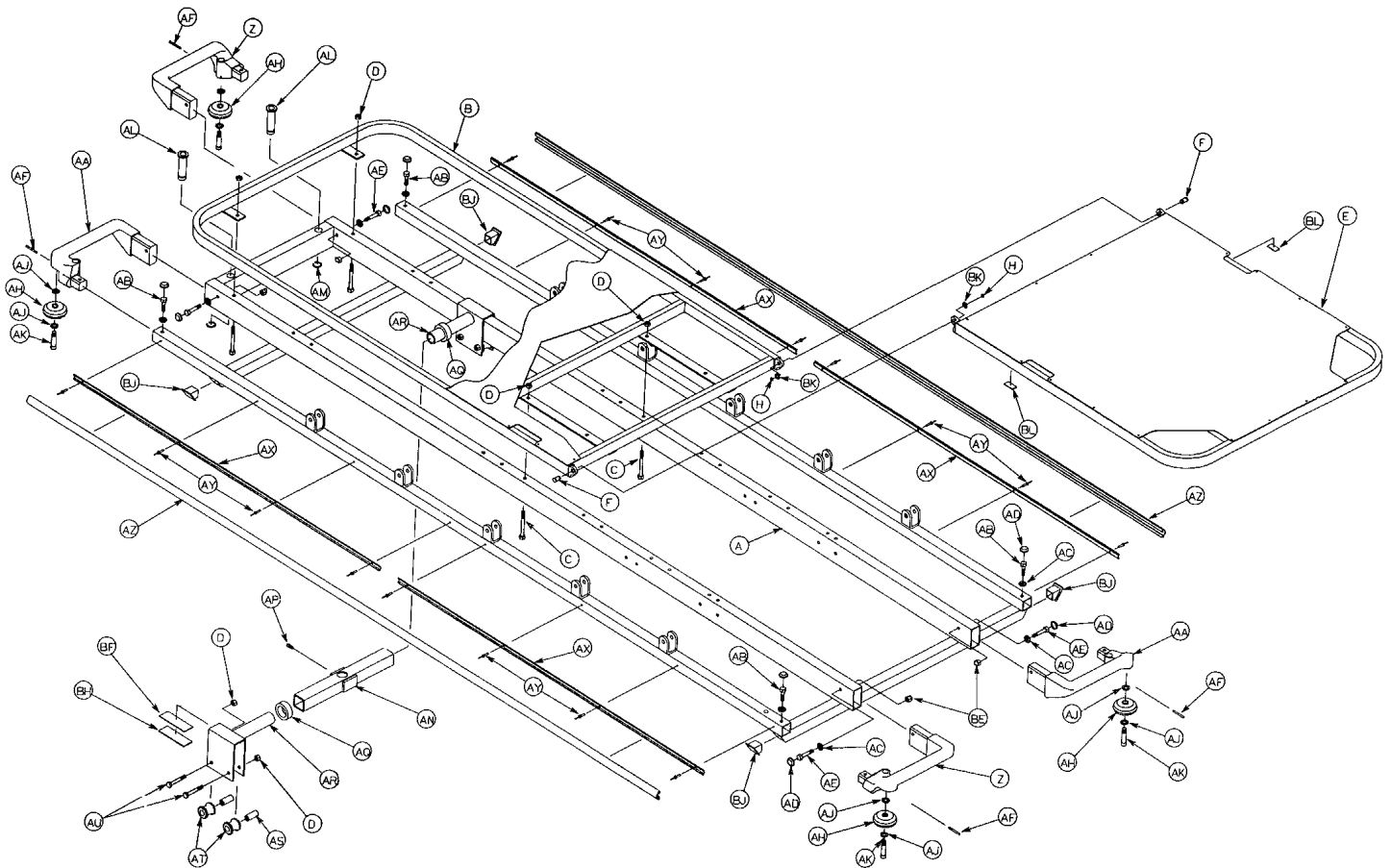
721-1-250 Base with Foot Control Jacks



721-1-250 Base with Foot Control Jacks

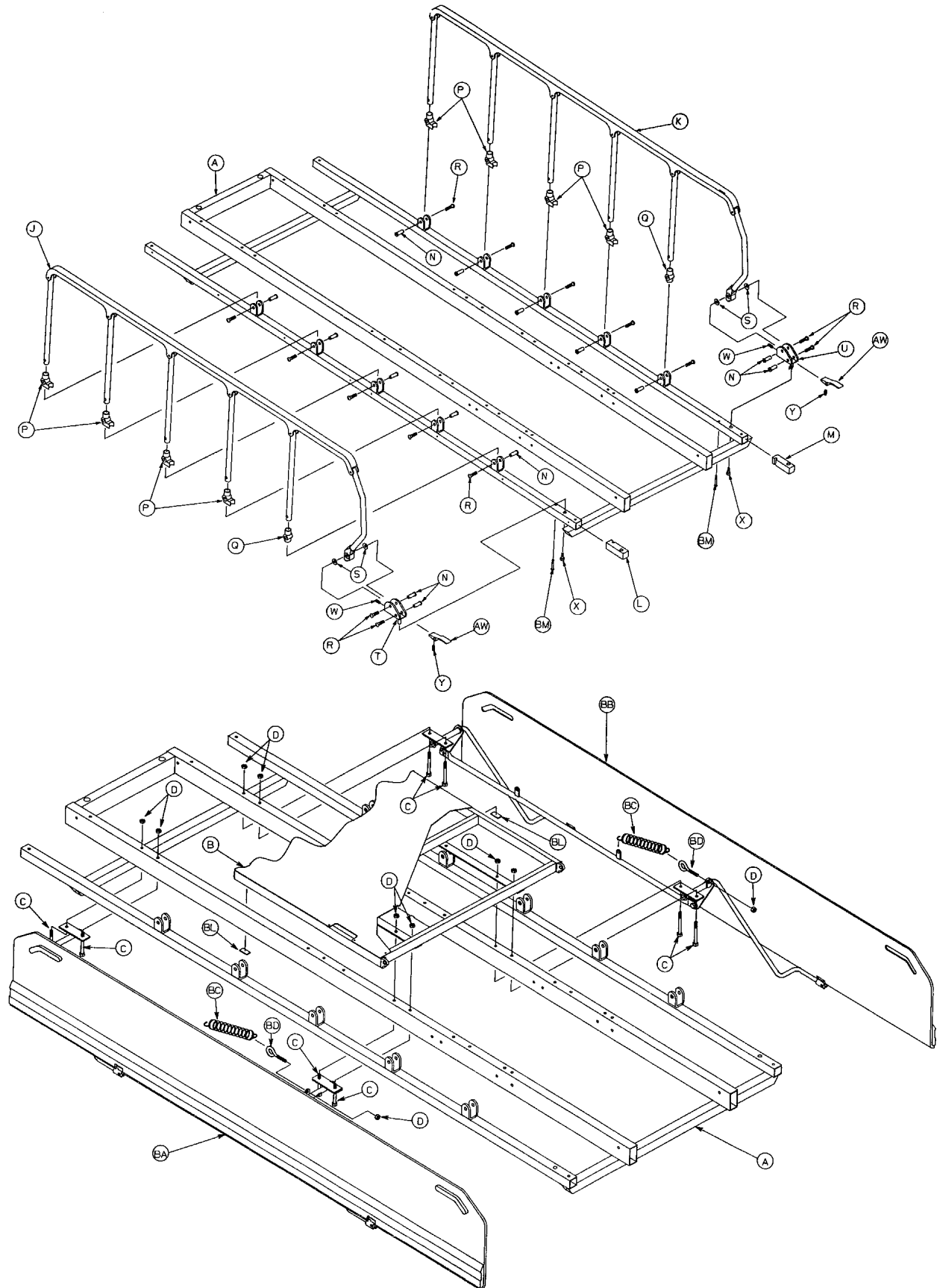
Item	Part No.	Part Name	Qty.	Item	Part No.	Part Name	Qty.
A	721-24-37	Hood Assembly	1	BK	16-2	Fiberlock Nut	4
B	29-7	Dual Lock	3	BL	11-16	Washer	2
C	29-9	Dual Lock	3	BM	721-1-314	Pump Link Rod Ass'y	2
D	721-1-270	Bellows	2	BN	390-3-185	Pump Connect. Rod	1
E	946-1-108	I.V. Clip	2	BT	14-3	Nylon Washer	As Req.
F	946-1-109	Adhesive Pad	2	BW	14-21	Nylon Washer	2
H	4-14	Soc. Hd. Cap Screw	8	BY	926-21-120	Jack Assembly	2
J	11-63	Washer	10	BZ	926-30-15	Bottle Ring	1
L	390-1-77	Pivot Link	2	CA	1-15	Flat Hd. Mach. Screw	2
M	8-12	Shoulder Bolt	2	CB	15-5	Hex Nut	2
N	16-11	Hex Nut	2	CD	21-25	Set Screw	1
P	28-1	Retaining Ring	4	CE	16-6	Kep Nut	1
R	14-9	Washer	2	CF	390-3-198	Rear Support Collar	1
S	11-13	Washer	6	CH	3-80	Hex Hd. Cap Screw	1
T	14-7	Washer	As Req.	CJ	21-95	Set Screw	2
W	721-1-177	Short Rel. Rod Wldmt.	2	CK	15-2	Hex Nut	2
Y	721-1-179	Long Rel. Rod Wldmt.	2	CL	15-22	Hex Nut	1
AB	27-3	Cotter Pin	2	CM	721-1-188	Jack Support Brace	2
AC	390-1-67	Jack Washer	1	CN	721-32-90	Specification Label	1
AD	763-1-16	Sleeve	1	CP	921-1-252	Serial No. Label	1
AE	763-1-15	Jack Spring	1	CR	982-1-24	Date Label	1
AF	763-1-14	Spring Guide	1	CS	26-6	Roll Pin	4
AH	721-1-207	Pump Link	2	CT	38-174	Extension Spring	4
AJ	38-227	Extension Spring	2	CW	27-7	Cotter Pin	4
AK	721-1-227	Spacer	2	CY	16-47	Nylock Hex Nut (1/4-28)	2
AL	721-1-190	Pedal Base Ass'y, Right	2	CZ	11-2	Washer	2
AM	721-1-191	Pedal Base Ass'y, Left	2	DA	946-1-155	Rubber Bumper	2
AN	721-1-237	Modified Acorn Nut	4	DB	2-18	Rd. Hd. Mach. Screw	2
AR	27-12	Hair Pin Cotter	8	DC	721-24-45	Ren. Series Logo Label	2
AS	4-57	H. Soc. But. Hd. Cap Scr.	2	DD	721-31-44	Brake/Steer Label, Hd.	1
AW	3-17	Hex. Hd. Cap Screw	4	DE	721-31-45	Brake/Steer Label, Ft.	1
AY	15-11	Hex Jam Nut	12	DF	721-31-46	Trend. Label	2
AZ	14-46	Nylon Washer	6	DH	721-31-47	Reverse Trend. Label	2
BA	37-11	Neoprene Cap	4	DJ	721-31-48	Bed Up Label	2
BB	721-1-266	Release Valve Plate	2	DK	946-1-60	Stryker Logo Label	2
BC	721-1-193	Pump Pedal Ass'y, Hd.	1	DL	926-29-22	O2 Holder Label	1
BD	721-1-192	Pump Pedal Ass'y, Ft.	1	DM	721-32-152	Head Down Label	2
BH	16-14	Fiberlock Nut	2	DN	721-32-150	Foot Down Label	2
BJ	2-88	Rd. Hd. Mach. Screw	4	DP	721-32-151	Bed Up Label	2

721-24-36 Basic Litter Assembly

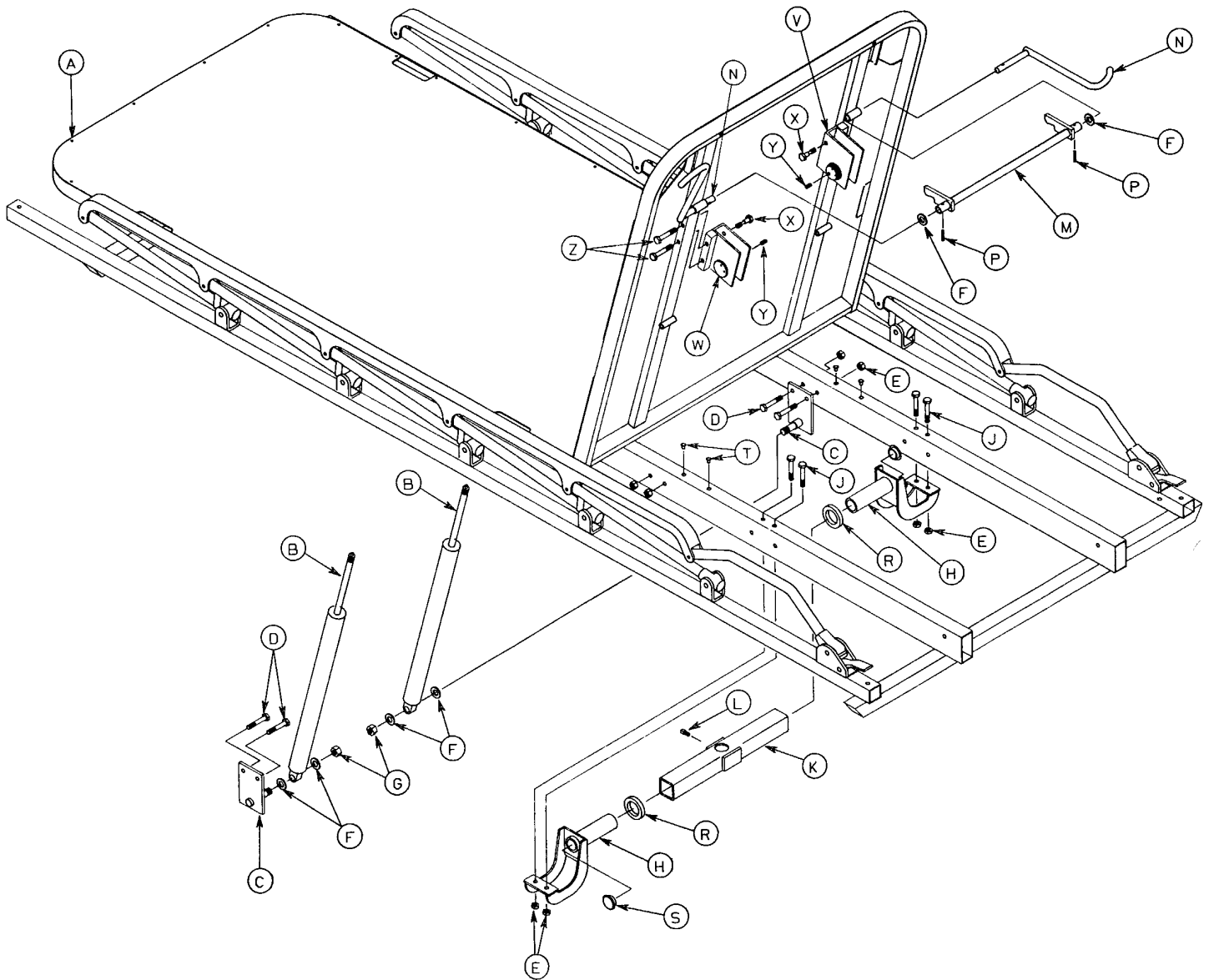


Item	Part No.	Part Name	Qty.	Item	Part No.	Part Name	Qty.
A	721-32-140	Frame Assembly	1	AH	721-32-49	Bumper Roller	4
B	721-32-139	Footsection Assembly	1	AJ	11-193	Flat Washer	8
C	3-73	Hex. Hd. Cap Screw	12	AK	8-36	Shoulder Bolt	4
D	16-28	Nylock Hex Nut	18	AL	721-40-26	Foot Board Receptacle	2
E	721-32-138	Fowler Assembly	1	AM	28-45	Retaining Ring	2
F	721-31-29	Retention Pin	2	AN	721-31-18	Support Tube Assembly	1
H	28-29	Retaining Ring	2	AP	46-1	Sq. Hd. Set Screw	1
J	721-26-82	Siderail Assembly, Left	1	AQ	42-7	Collar Assembly	2
K	721-26-83	Siderail Assembly, Right	1	AR	721-32-106	Trend Roller Wldmt.	2
L	721-26-79	Lock Support, Left	1	AS	721-32-107	Roller Sleeve	4
M	721-26-61	Lock Support, Right	1	AT	721-32-108	Support Roller	4
N	721-26-66	Pivot Screw	14	AU	3-78	Hex Hd. Cap Screw	4
P	721-26-68	Upright Cradle	8	AW	721-26-74	Lock Handle, Mach.	2
Q	721-26-69	Upright Sleeve	2	AX	741-26-15	Bumper Channel	4
R	4-136	Button Hd. Cap Screw	14	AY	25-65	Pop Rivet	16
S	11-179	Nylon Flat Washer	4	AZ	721-26-45	Siderail Bumper	2
T	721-26-71	Lock Pivot, Left	1	BA	721-24-39	Transfer Syst. Ass'y, Lt.	1
U	721-26-72	Lock Pivot, Right	1	BB	721-24-40	Transfer Syst. Ass'y, Rt.	1
W	21-33	Set Screw	2	BC	38-218	Tension Spring	2
X	3-75	Hex Hd. Cap Screw	2	BD	10-2	Eye Bolt	2
Y	38-220	Compression Spring	2	BE	17-4	Acorn Nut	4
Z	721-32-53	Handle, Left, Machined	2	BF	44-29	Double-Sided Tape	2'
AA	721-32-58	Handle, Right, Machined	2	BH	919-30-28	Rack Bearing	6
AB	3-50	Hex Hd. Cap Screw	4	BJ	721-32-145	Angle Plug	4
AC	37-56	Retaining Washer	8	BK	14-3	Nylon Flat Washer	2
AD	37-55	Protective Cap	8	BL	721-32-146	Frame Protector	4
AE	3-74	Hex Hd. Cap Screw	4	BM	2-89	Rd. Hd. Mach. Screw	2
AF	26-6	Roll Pin	4				

721-24-36 Basic Litter Assembly

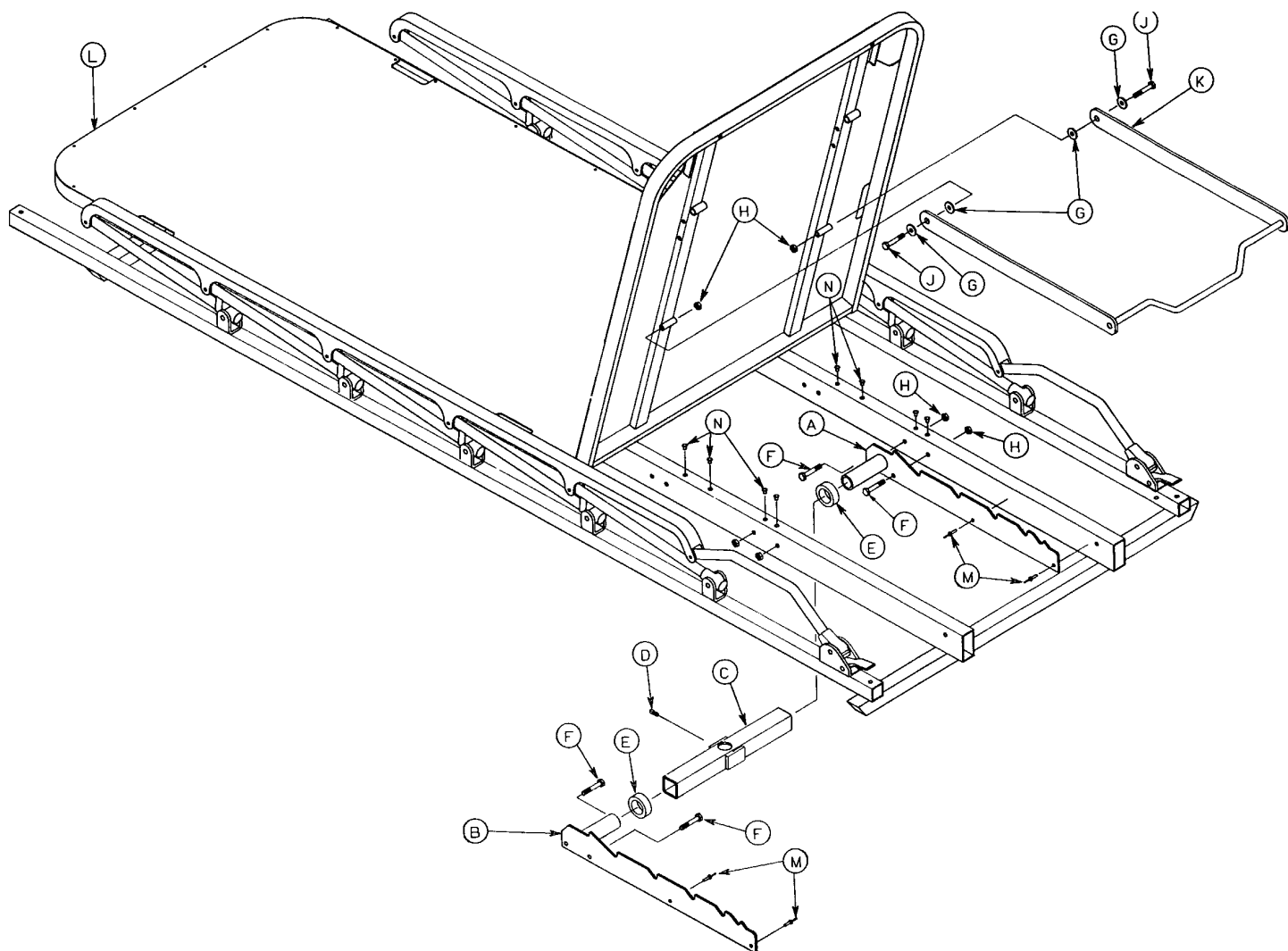


721-31 Pneumatic Fowler Litter Assembly



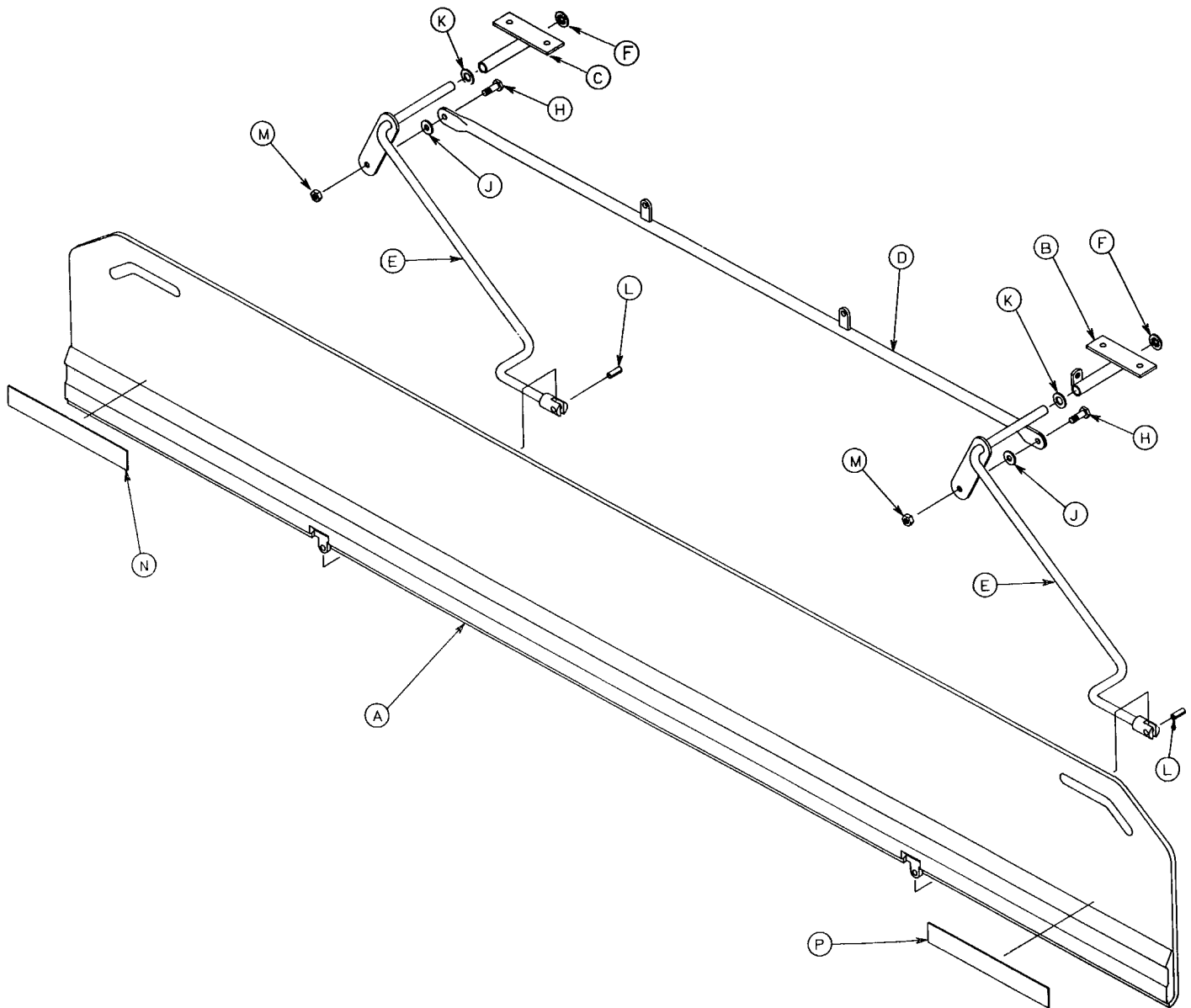
Item	Part No.	Part Name	Qty.	Item	Part No.	Part Name	Qty.
A	721-24-36	Basic Litter Assembly	1	M	721-31-17	Lever Assembly	1
B	946-31-20	Gas Cylinder	2	N	721-31-56	Handle Assembly	2
C	741-1-115	Cylinder Mount	2	P	26-5	Roll Pin	2
D	3-47	Hex Hd. Cap Screw	4	R	938-1-401	Collar Assembly	2
E	16-28	Nylock Hex Nut	8	S	721-31-62	Round Hole Plug	2
F	14-21	Nylon Flat Washer	4	T	721-31-65	Round Hole Plug	4
G	16-35	Nylock Hex Nut	2	V	721-31-66	Housing Ass'y, Right	1
H	721-31-41	Loop Assembly	2	W	721-31-67	Housing Ass'y, Left	1
J	3-73	Hex Hd. Cap Screw	4	X	721-31-64	Stop Bolt	2
K	721-32-110	Support Tube Assembly	1	Y	21-36	Set Screw	2
L	46-1	Square Hd. Set Screw	1	Z	3-74	Hex Hd. Cap Screw	4

721-32 Manual Fowler Litter Assembly



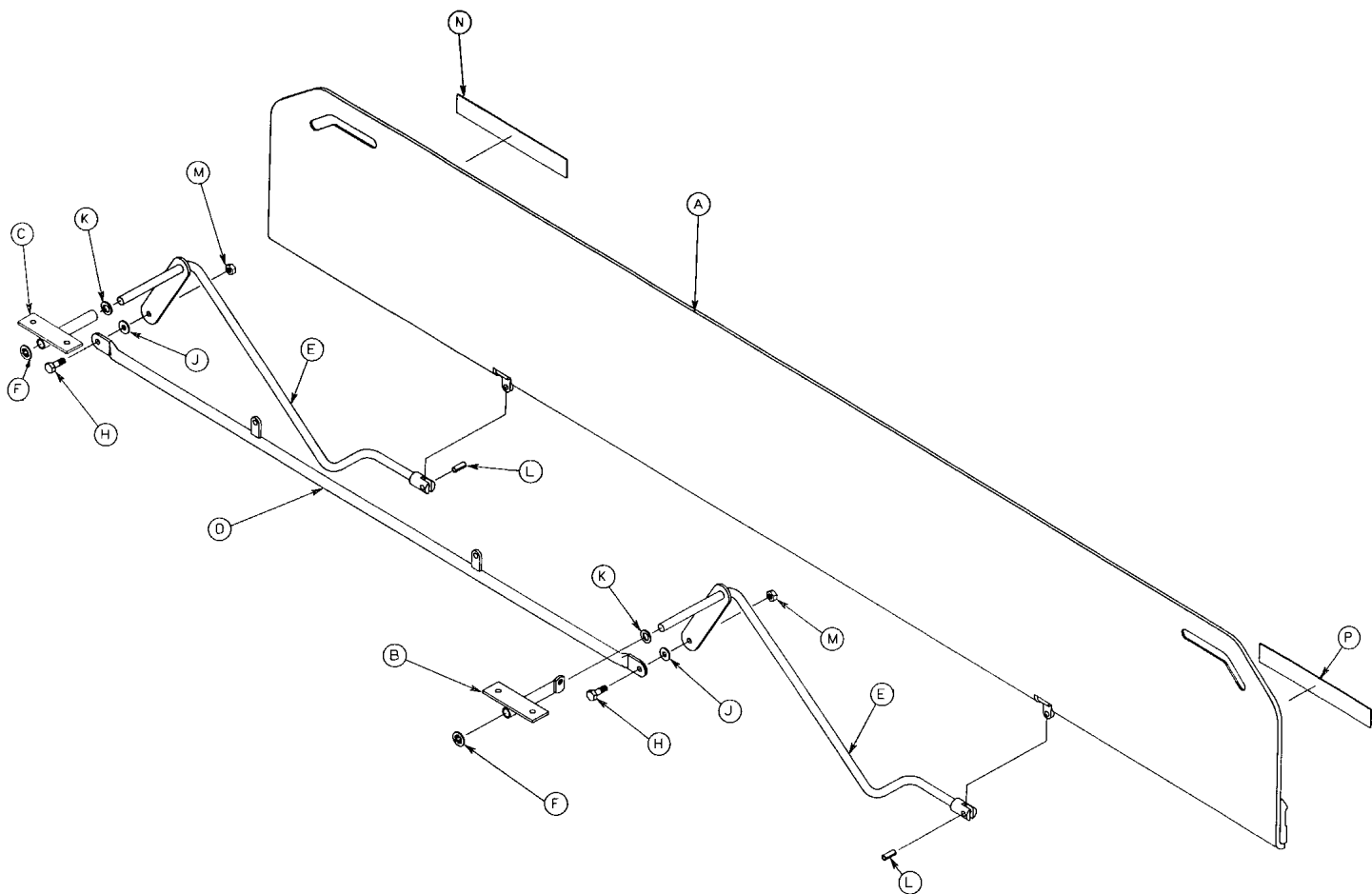
Item	Part No.	Part Name	Qty.
A	721-31-53	Fowler Supt. Ass'y, Rt.	1
B	721-31-54	Fowler Supt. Ass'y, Lt.	1
C	721-32-18	Support Tube Assembly	1
D	46-1	Square Hd. Set Screw	1
E	42-7	Collar Assembly	2
F	3-47	Hex Hd. Cap Screw	4
G	11-167	Nylon Flat Washer	4
H	16-28	Nylock Hex Nut	6
J	3-78	Hex Hd. Cap Screw	2
K	721-31-18	Brace Assembly	1
L	721-24-46	Basic Litter Assembly	1
M	25-79	Pop Rivet	4
N	721-31-65	Round Hole Plug	8

721-24-39 Transfer System Assembly, Left



Item	Part No.	Part Name	Qty.
A	721-32-120	Transfer Board Assembly	1
B	721-32-114	Bearing Assembly	1
C	721-32-113	Bearing Strap Assembly	1
D	721-32-148	Connecting Link Assembly	1
E	721-32-137	Support Arm Assembly, Left	2
F	28-93	Retaining Ring	2
H	3-50	Hex Hd. Cap Screw	2
J	11-132	Nylon Flat Washer	2
K	14-21	Nylon Flat Washer	2
L	26-178	Roll Pin	2
M	16-28	Nylock Hex Nut	2
N	721-24-46	Label	1
P	721-24-47	Label	1

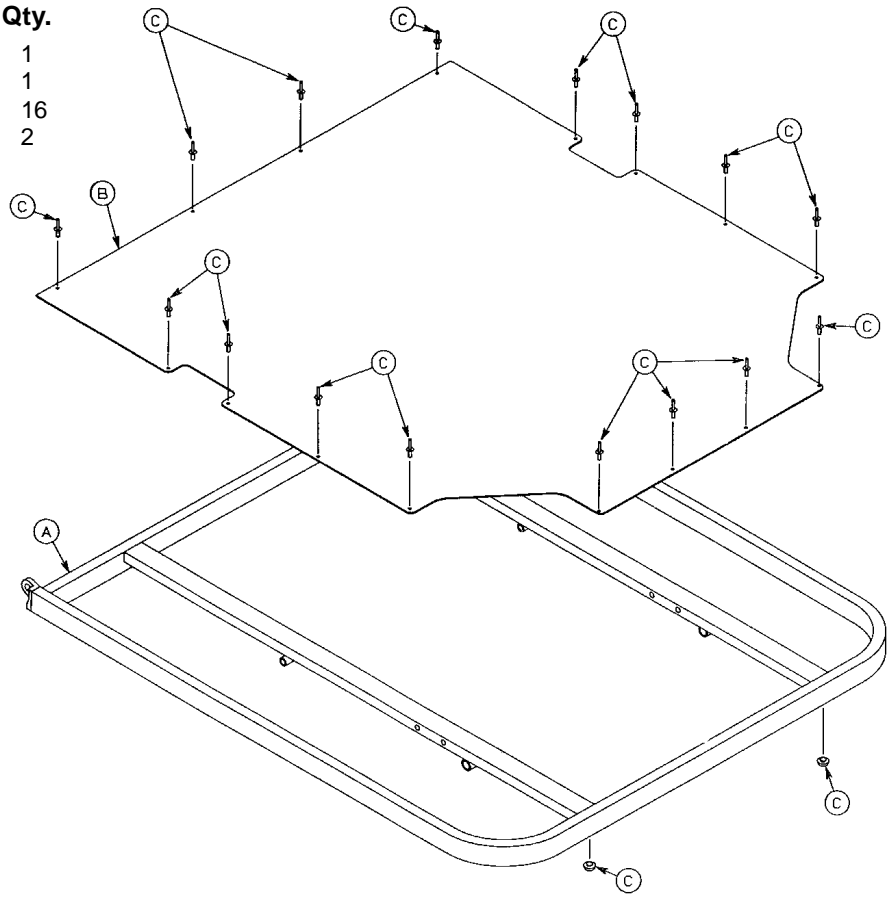
721-24-40 Transfer System Assembly, Right



Item	Part No.	Part Name	Qty.
A	721-32-120	Transfer Board Assembly	1
B	721-32-114	Bearing Assembly	1
C	721-32-113	Bearing Strap Assembly	1
D	721-32-148	Connecting Link Assembly	1
E	721-32-136	Support Arm Assembly, Right	2
F	28-93	Retaining Ring	2
H	3-50	Hex Hd. Cap Screw	2
J	11-132	Nylon Flat Washer	2
K	14-21	Nylon Flat Washer	2
L	26-178	Roll Pin	2
M	16-28	Nylock Hex Nut	2
N	721-24-46	Label	1
P	721-24-47	Label	1

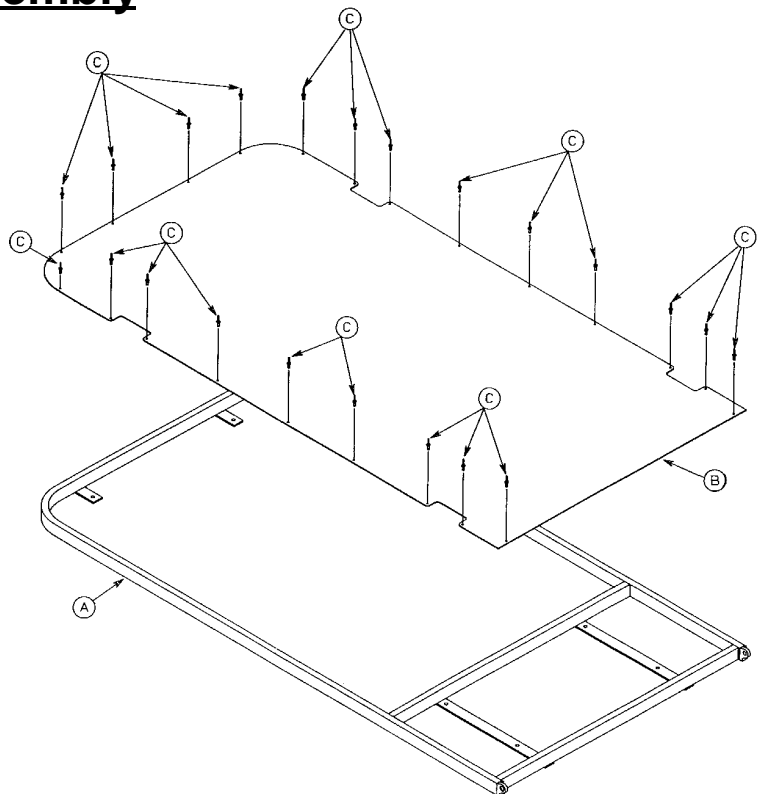
721-32-138 Fowler Assembly

Item	Part No.	Part Name	Qty.
A	721-31-20	Fowler Weldment	1
B	721-31-50	Fowler Skin	1
C	25-65	1/8" Dia. Pop Rivet	16
D	37-52	Rubber Bumper	2

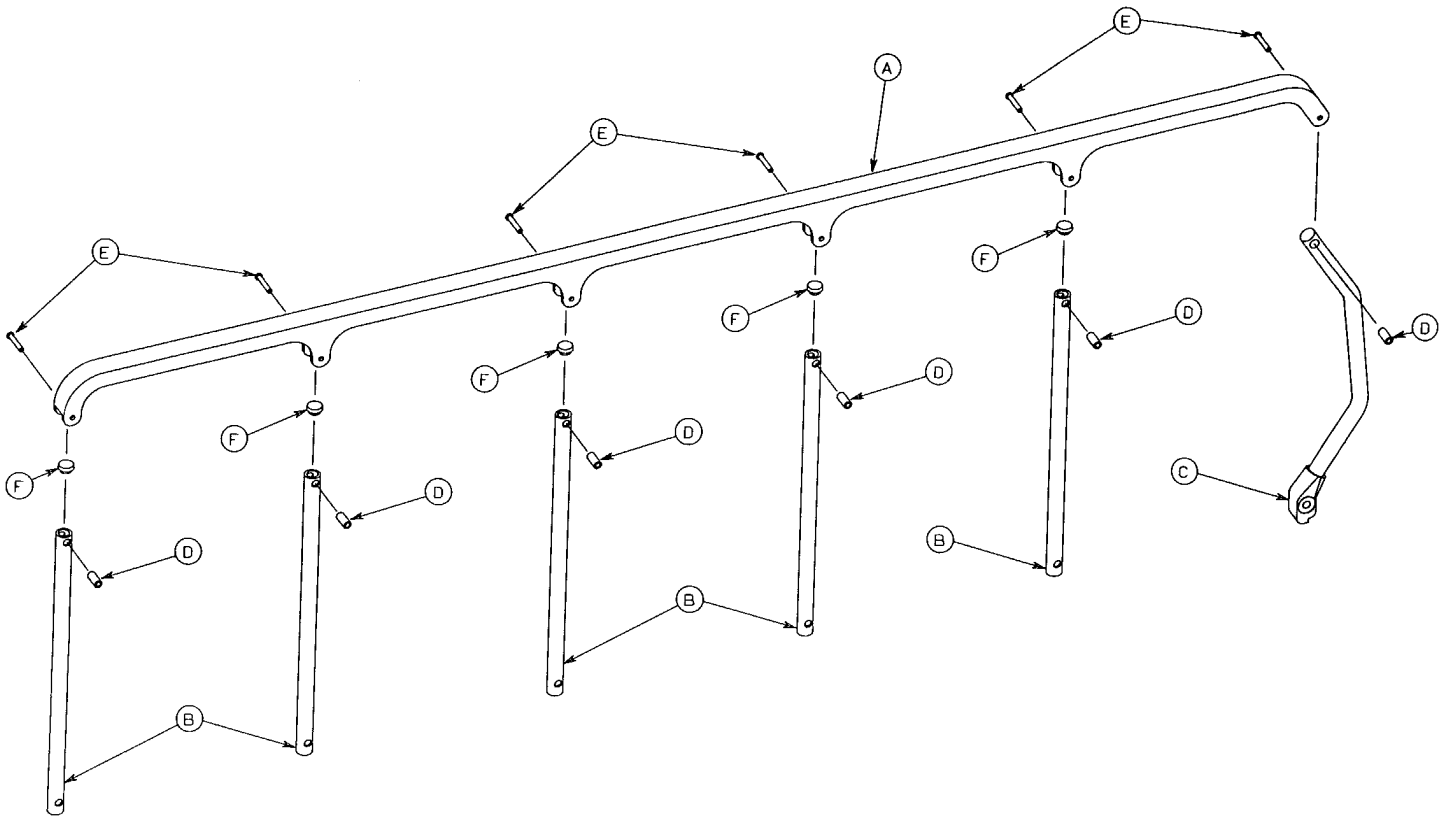


721-32-139 Footsection Assembly

Item	Part No.	Part Name	Qty.
A	721-32-20	Footsection Weldment	1
B	721-32-128	Footsection Skin	1
C	25-65	1/8" Dia. Pop Rivet	22

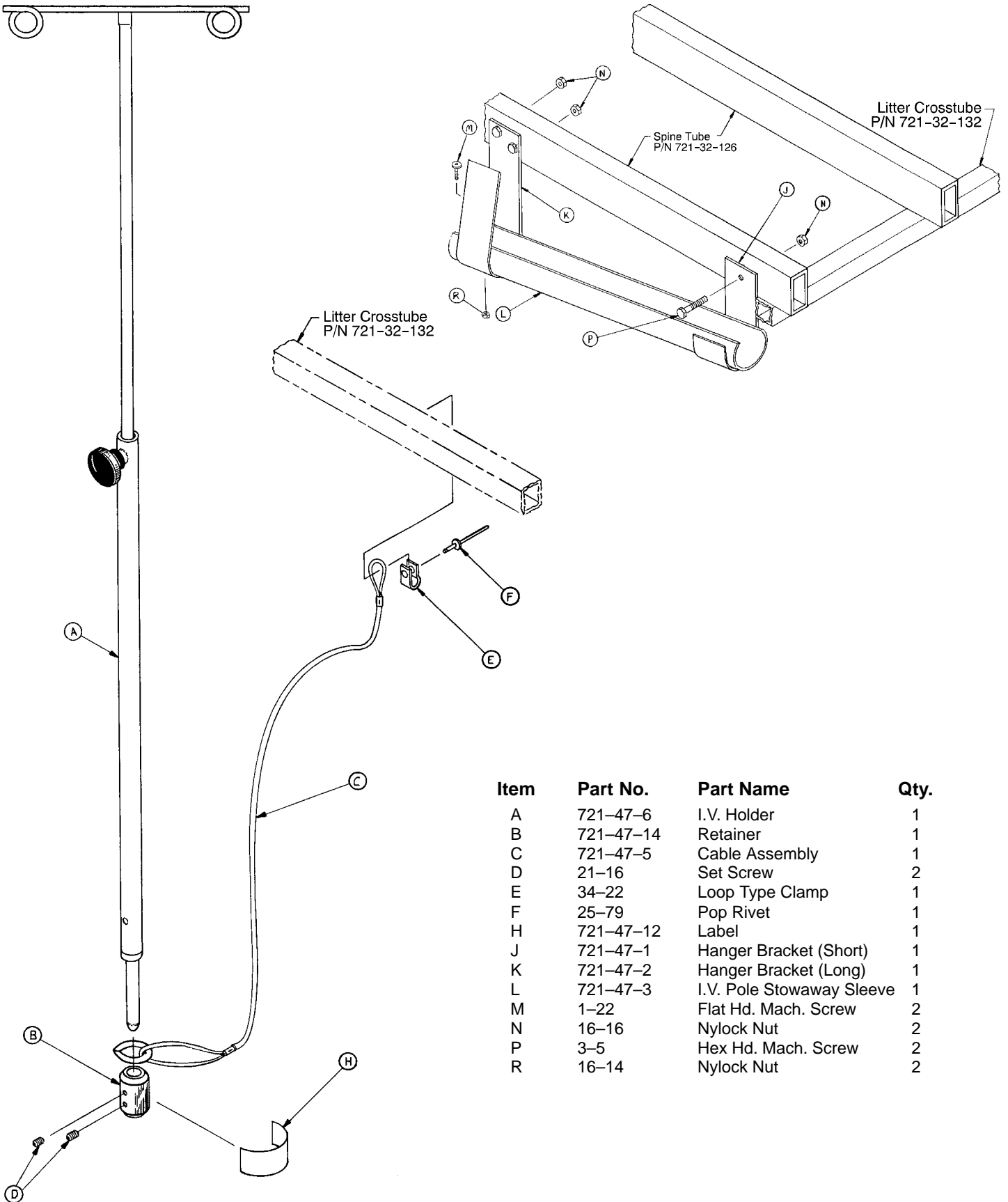


721-26-83 Siderail Assembly



Item	Part No.	Part Name	Qty.
A	721-26-62	Top Rail	1
B	721-26-67	Upright	5
C	721-26-81	Upright Assembly, Bent	1
D	399-31-16	Sleeve Bearing	6
E	25-61	Semi-Tubular Rivet	6
F	721-26-84	Round Hole Plug	5

721-47-10 I.V. Pole Assembly



Item	Part No.	Part Name	Qty.
A	721-47-6	I.V. Holder	1
B	721-47-14	Retainer	1
C	721-47-5	Cable Assembly	1
D	21-16	Set Screw	2
E	34-22	Loop Type Clamp	1
F	25-79	Pop Rivet	1
H	721-47-12	Label	1
J	721-47-1	Hanger Bracket (Short)	1
K	721-47-2	Hanger Bracket (Long)	1
L	721-47-3	I.V. Pole Stowaway Sleeve	1
M	1-22	Flat Hd. Mach. Screw	2
N	16-16	Nylock Nut	2
P	3-5	Hex Hd. Mach. Screw	2
R	16-14	Nylock Nut	2



European Representative

Stryker France
BP 50040-95946 Roissy Ch. de Gaulle
Cedex-France

Phone: 33148632290
Fax: 33148632175

stryker[®]
Medical

6300 Sprinkle Road, Kalamazoo, MI 49001-9799

(800) 327-0770
www.strykermedical.com



DH/MS 3/90 721-32-23 REV__