

**stryker<sup>®</sup>**  
**Medical**

---

---

*763 SurgiStool*

---

*Operations and Maintenance Manual*

*For Parts or Technical Assistance*  
*800-327-0770*

# Table of Contents

---

Introduction	
Specifications .....	2
Warning / Caution / Note Definition .....	2
SurgiStool Assembly Illustration .....	3
Jack Replacement Instructions .....	4
Checking/Adding Hydraulic Fluid .....	5
Assembly Drawings And Parts Lists	
SurgiStool with Round Seat .....	6, 7
SurgiStool with ObRound Seat .....	8, 9
SurgiStool with Motorcycle Seat .....	10, 11
Round Seat and Frame Assembly .....	12
ObRound Seat and Frame Assembly .....	13
Jack Assembly .....	14–16
Jack Base Assembly .....	17
Pump Pedal Assembly .....	18
Padded Back Rest Assembly .....	19
Control Lever Assembly .....	20
Brake Assembly .....	21
Jack Conversion Kit .....	22, 23
Optional Accessory Arm Rest Assembly .....	24, 25
Optional Foot Rest Assembly .....	26

# Introduction

---

## INTRODUCTION

This manual is designed to assist you with the operation and maintenance of the Model 763 SurgiStool. Read it thoroughly before using the equipment or beginning any maintenance on it.

## SPECIFICATIONS

Maximum Weight Capacity	300 pounds
Height Range (floor to seat surface)	21 / 31 inches (53.3 centimeters / 78.7 centimeters)

Stryker reserves the right to change specifications without notice.

## WARNING / CAUTION / NOTE DEFINITION

The words WARNING, CAUTION and NOTE carry special meanings and should be carefully reviewed.

---

### WARNING

The personal safety of the patient or user may be involved. Disregarding this information could result in injury to the patient or user.

---

---

### CAUTION

These instructions point out special procedures or precautions that must be followed to avoid damaging the equipment.

### NOTE

This provides special information to make maintenance easier or important instructions clearer.

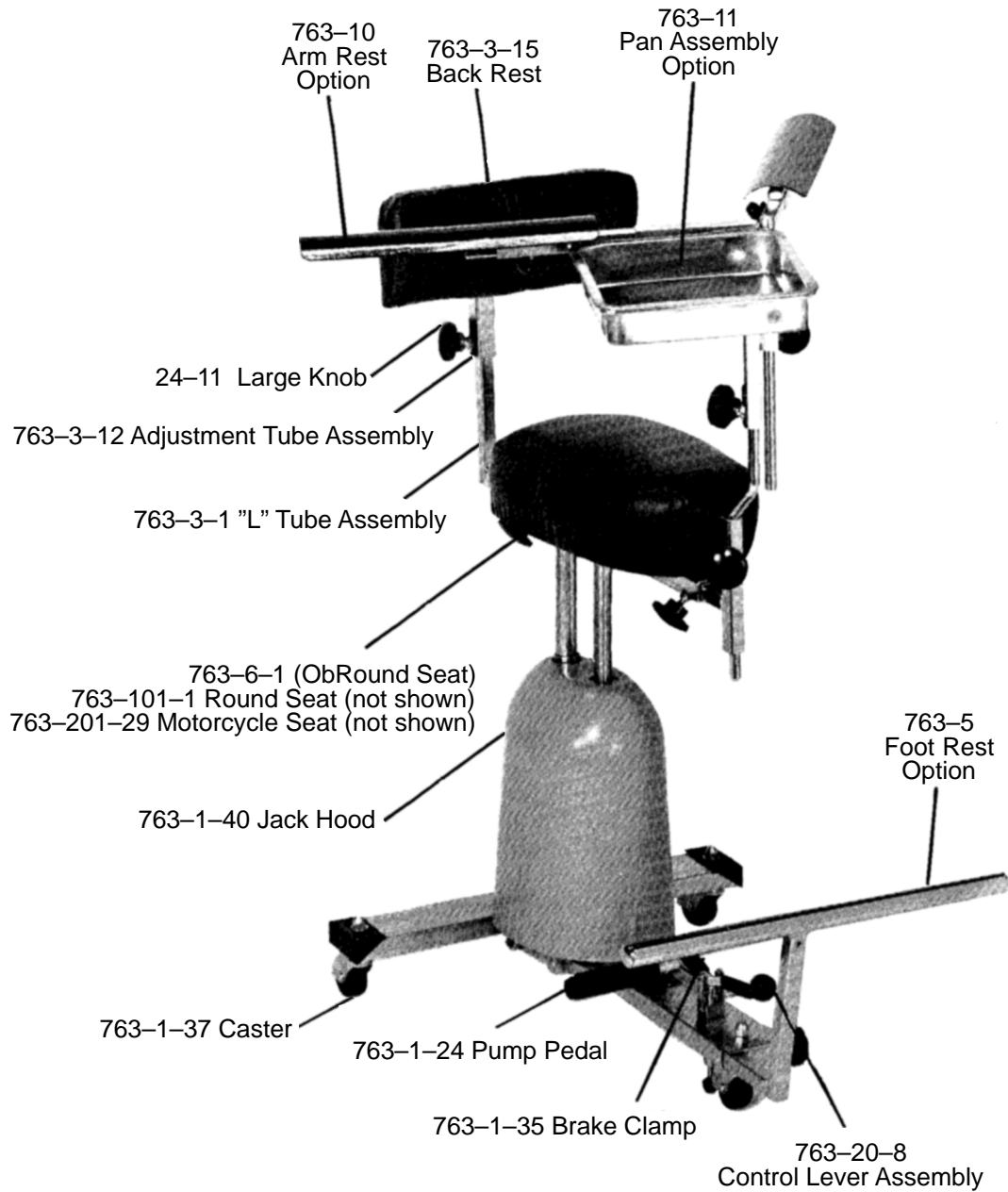
# SurgiStool Assembly

---

**763 SurgiStool with ObRound Seat**

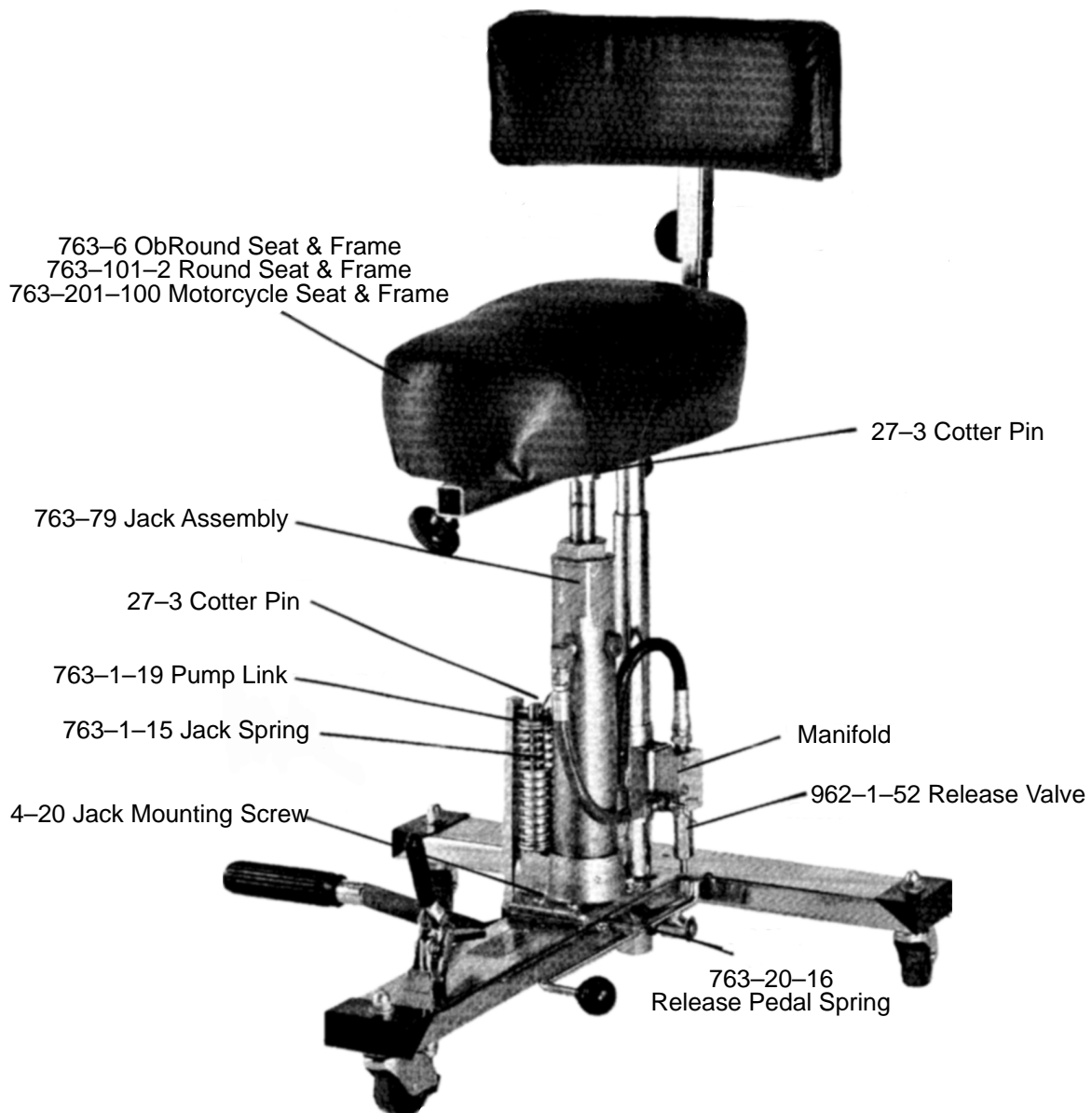
**763-101 SurgiStool with Round Seat**

**763-201 SurgiStool with Motorcycle Seat**



# Jack Replacement Instructions

---



1. Remove the cotter pin at the top of the jack assembly holding the seat frame to the jack.
2. Remove the seat and frame.
3. Remove the two nuts at the bottom of the base and remove the base hood.
4. Remove the manifold from the bracket.
5. Remove the cotter pin in the pump link.
6. Remove the pump link.

---

## WARNING

The jack spring is highly compressed. To avoid injury, it **must** be controlled while the pump link is removed.

7. Remove the jack spring and spring guide.
8. Remove the four jack mounting screws.
9. Remove the jack assembly and use the four mounting screws to install the replacement jack.
10. Reverse steps 1-7 to reassemble the SurgiStool after installing the replacement jack.

# Checking/Adding Hydraulic Fluid

---

## Required Tools:

5/32" Allen Wrench  
Needle Nose Pliers

3/8" Open End Wrench

3/4" Open End Wrench

## Procedure:

1. Remove the cotter pin at the top of the jack assembly holding the seat frame to the jack.
2. Remove the seat and frame.
3. Remove the two nuts at the bottom of the base and remove the base hood.
4. Be sure there are no hydraulic leaks. If there are, the hydraulic jack must be replaced.
5. Lower the jack to the full down position.
6. Using a 3/4" open end wrench, slowly turn the fill plug located on the side of the reservoir counterclockwise to allow excess system pressure to vent. Remove the fill plug.
7. The hydraulic fluid should be visible at the bottom of the fill hole. If it is not, add Mobil Aero HFA hydraulic fluid (Stryker part number 2020-70-475) until the fluid is visible at the bottom of the fill hole. Replace the fill plug.

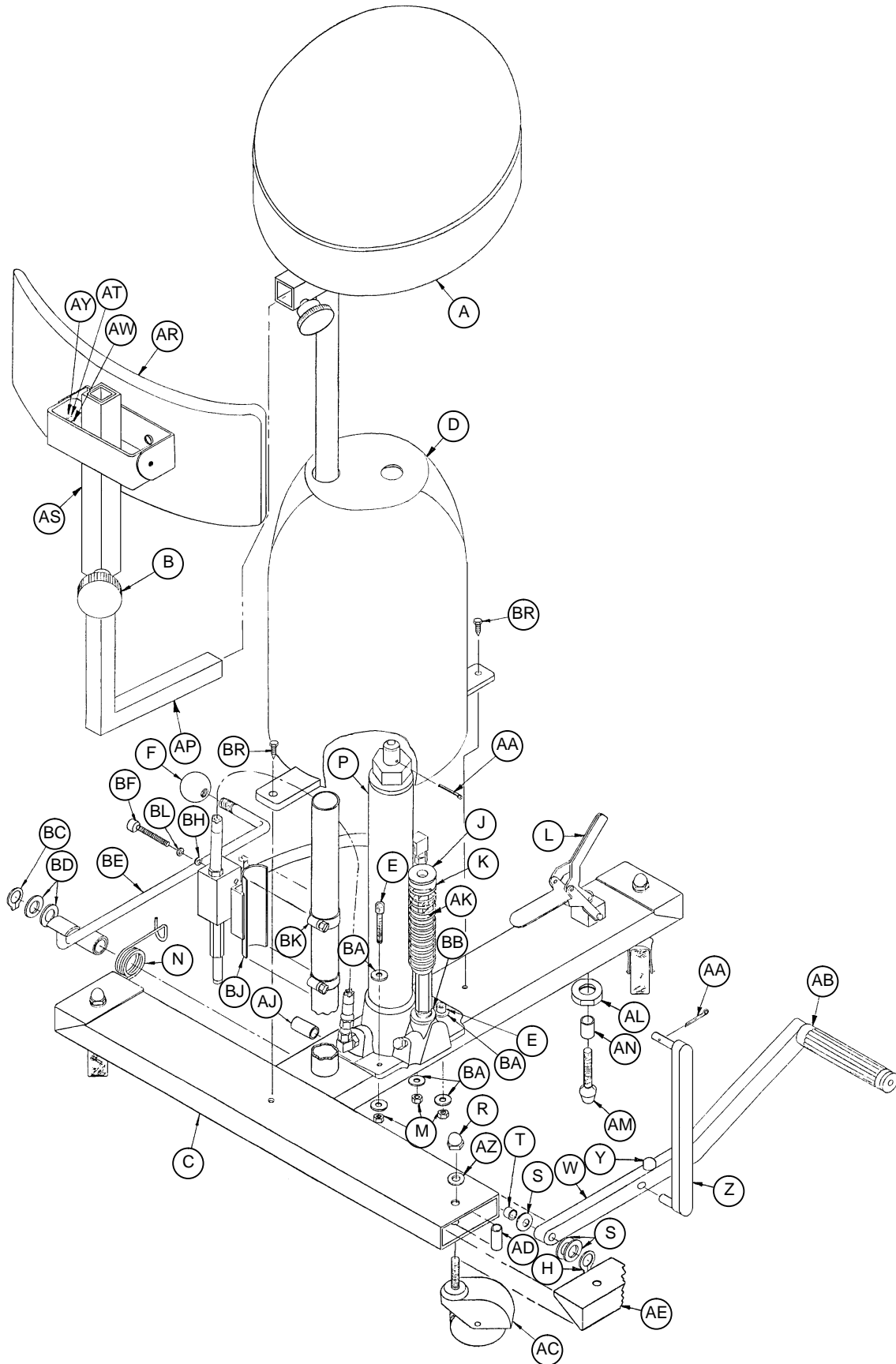
---

## CAUTION

Use of other types of oil may damage hydraulic units.

8. Replace the base hood and the seat assembly.

# SurgiStool with Round Seat



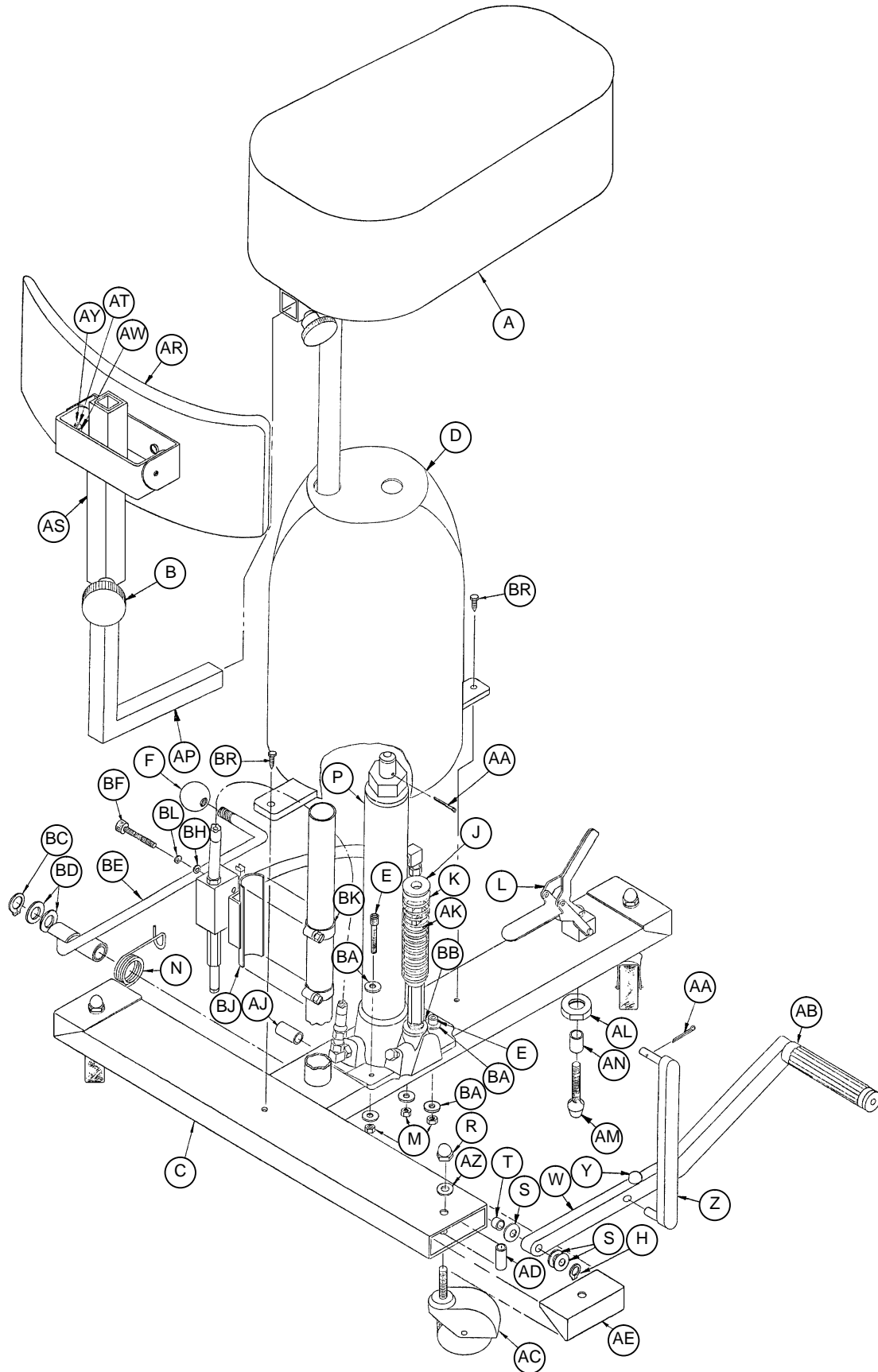
# SurgiStool with Round Seat

---

Item	Part No.	Part Name	Qty.
A	(page 12)	Seat & Frame Assembly	1
B	24-11	Large Knob	1
C	763-20-1	Base Frame Assembly	1
D	763-1-40	Base Hood	1
E	4-20	Soc. Hd. Cap Screw	4
F	33-2	Knob	1
H	28-95	Retaining Ring	1
J	763-1-14	Spring Guide	1
K	763-1-15	Jack Spring	1
L	763-1-35	Brake Clamp	1
M	16-6	Kep Nut	4
N	763-20-16	Spring	1
P	(page 16)	Jack Assembly	1
R	17-6	Acorn Nut	3
S	11-4	Washer	3
T	763-1-29	Pedal Spacer	1
W	(page 18)	Pedal Assembly	1
Y	650-1-48	Rubber Bumper	1
Z	763-1-19	Pump Link Rod Assembly	1
AA	27-3	Cotter Pin	1
AB	763-1-28	Foot Grip	1
AC	763-1-37	Caster	3
AD	763-1-38	Caster Spacer	3
AE	763-1-30	End Cap	3
AF	763-20-45	Name Plate	1
AJ	763-20-21	Hose Sleeve	1
AK	763-1-16	Spring Holder	1
AL	763-1-33	Brake Nut	1
AM	763-1-34	Brake Rubber Stop	1
AN	763-1-36	Brake Spacer	1
AP	763-3-1	"L" Tube Assembly	1
AR	(page 19)	Back Rest Assembly	1
AS	763-3-12	Adjustment Tube	1
AT	16-3	Fiberlock Nut	2
AW	2-18	Round Hd. Mach. Screw	2
AY	11-11	Nylon Washer	2
AZ	11-67	Flat Washer	3
BA	11-63	Flat Washer	8
BB	390-1-67	Washer	1
BC	28-97	Retaining Ring	1
BD	11-13	Flat Washer	2
BE	763-20-8	Control Lever	1
BF	4-85	Hex Soc. Hd. Cap Screw	2
BH	11-16	Flat Washer	2
BJ	763-20-13	Manifold Mounting Bracket	1
BK	38-15	Adjustable Clamp	2
BL	12-5	Lock Washer	2
BM	921-1-252	Serial Number Label	1
BN	982-1-24	Date-of-Manufacture Label	1
BP	763-1-50	Jack Shim	1
BR	23-42	Self-Tapping Screw	2



# SurgiStool with ObRound Seat

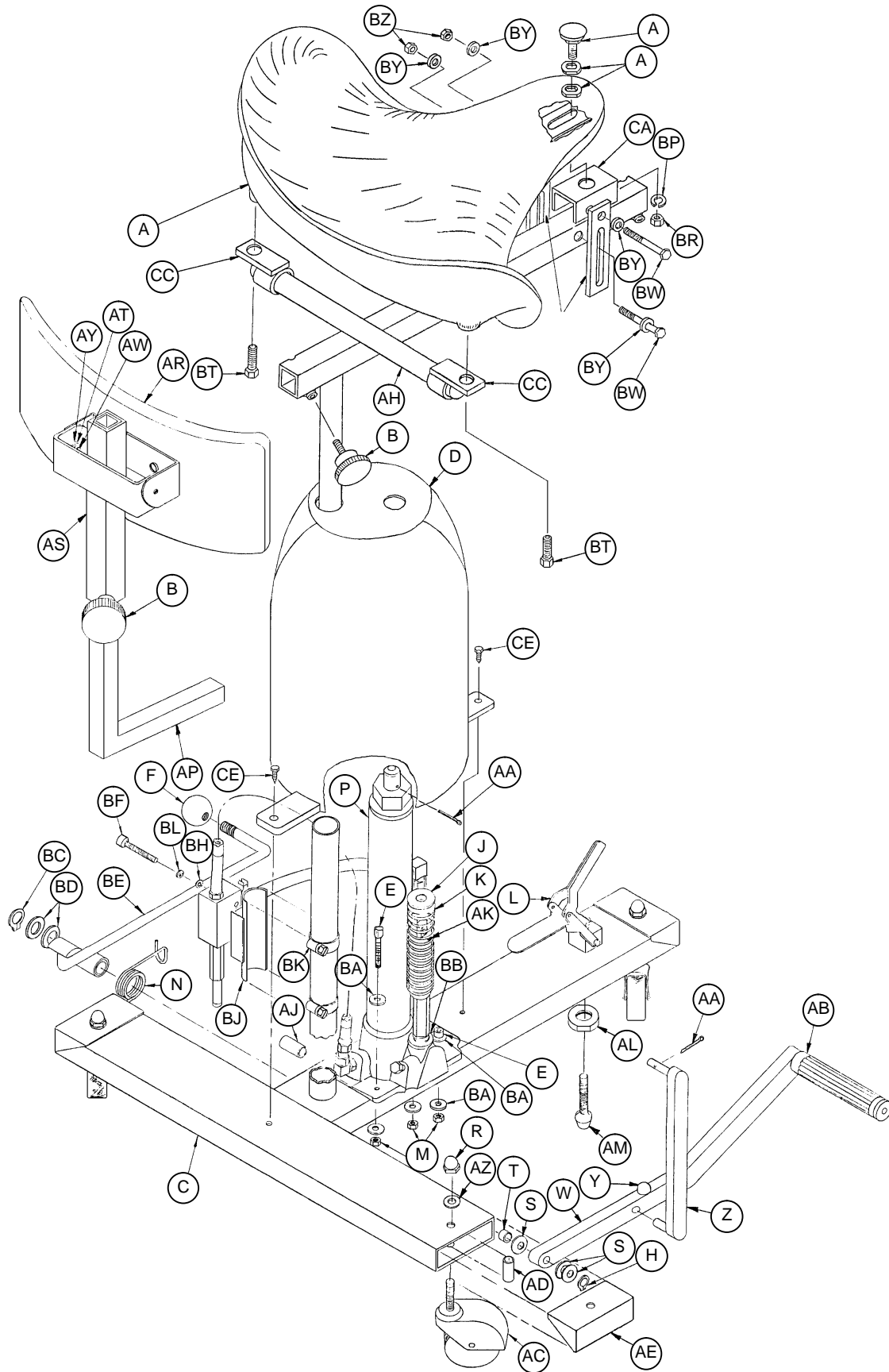


# SurgiStool with ObRound Seat

---

Item	Part No.	Part Name	Qty.
A	(page 13)	Seat & Frame Assembly	1
B	24-11	Large Knob	1
C	763-20-1	Base Frame Assembly	1
D	763-1-40	Base Hood	1
E	4-20	Soc. Hd. Cap Screw	4
F	33-2	Knob	1
H	28-95	Retaining Ring	1
J	763-1-14	Spring Guide	1
K	763-1-15	Jack Spring	1
L	763-1-35	Brake Clamp	1
M	16-6	Kep Nut	4
N	763-20-16	Spring	1
P	(page 16)	Jack Assembly	1
R	17-6	Acorn Nut	3
S	11-4	Washer	3
T	763-1-29	Pedal Spacer	1
W	(page 18)	Pedal Assembly	1
Y	650-1-48	Rubber Bumper	1
Z	763-1-19	Pump Link Rod Assembly	1
AA	27-3	Cotter Pin	1
AB	763-1-28	Foot Grip	1
AC	763-1-37	Caster	3
AD	763-1-38	Caster Spacer	3
AE	763-1-30	End Cap	3
AF	763-20-45	Name Plate	1
AJ	763-20-21	Hose Sleeve	1
AK	763-1-16	Spring Holder	1
AL	763-1-33	Brake Nut	1
AM	763-1-34	Brake Rubber Stop	1
AN	763-1-36	Brake Spacer	1
AP	763-3-1	"L" Tube Assembly	1
AR	(page 19)	Back Rest Assembly	1
AS	763-3-12	Adjustment Tube	1
AT	16-3	Fiberlock Nut	2
AW	2-18	Round Hd. Mach. Screw	2
AY	11-11	Nylon Washer	2
AZ	11-67	Flat Washer	3
BA	11-63	Flat Washer	8
BB	390-1-67	Washer	1
BC	28-97	Retaining Ring	1
BD	11-13	Flat Washer	2
BE	(page 20)	Control Lever Assembly	1
BF	4-85	Hex Soc. Hd. Cap Screw	2
BH	11-16	Flat Washer	2
BJ	763-20-13	Manifold Mounting Bracket	1
BK	38-15	Adjustable Clamp	2
BL	12-5	Lock Washer	2
BM	921-1-252	Serial Number Label	1
BN	982-1-24	Date-of-Manufacture Label	1
BP	763-1-50	Jack Shim	1
BR	23-42	Self-Tapping Screw	2

# SurgiStool with Motorcycle Seat

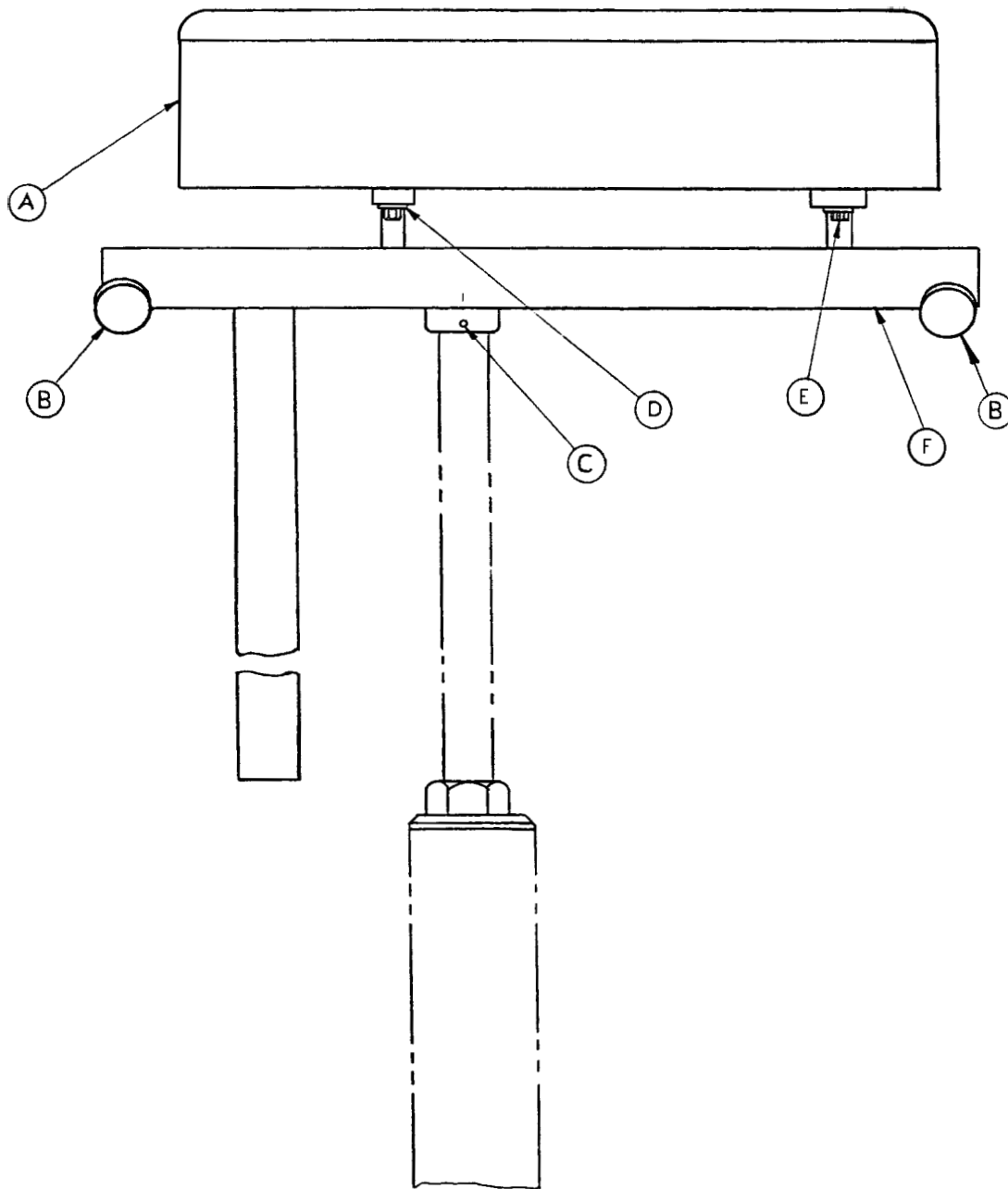


# SurgiStool with Motorcycle Seat

---

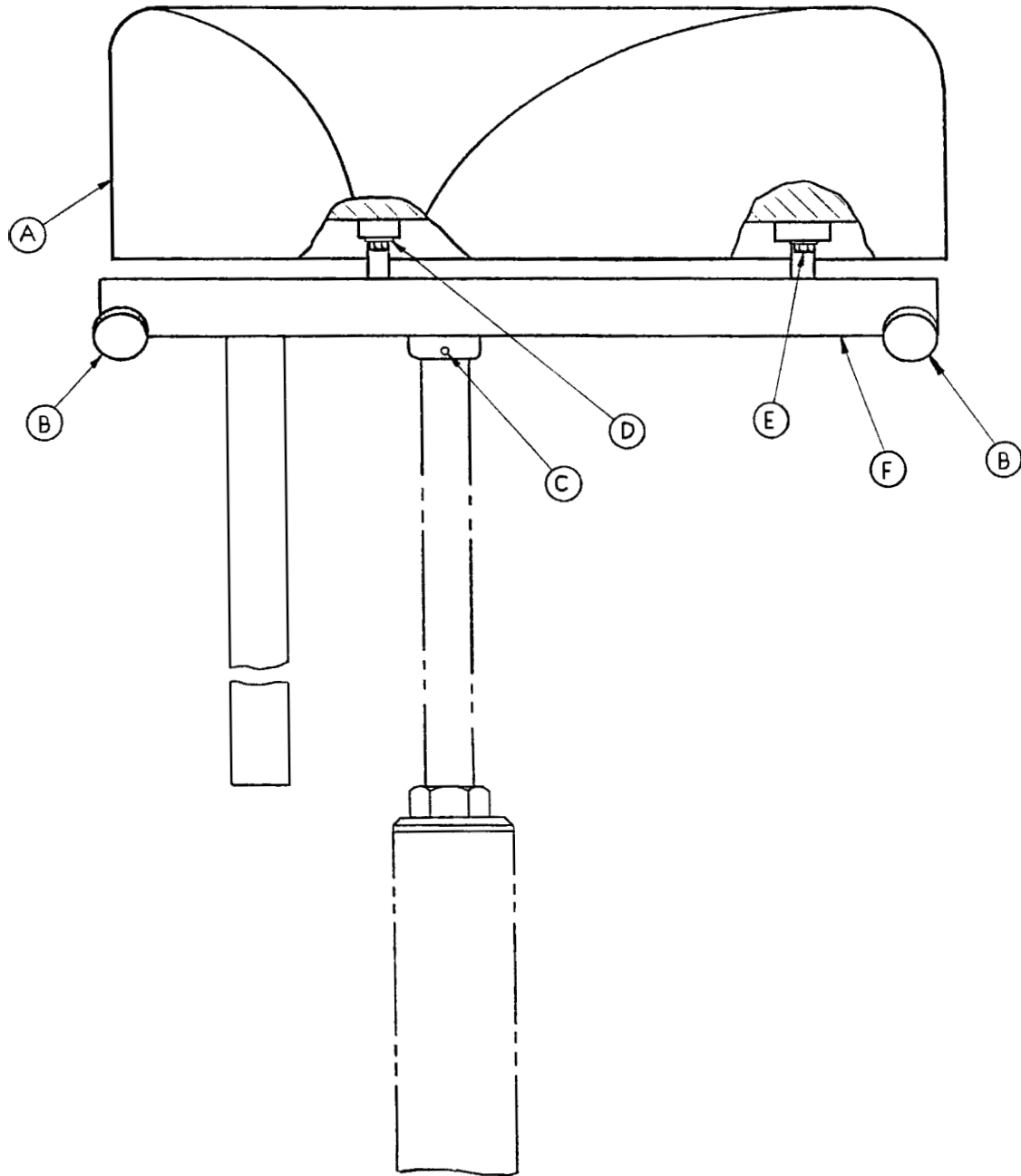
Item	Part No.	Part Name	Qty.
A	763-201-29	Seat & Mtg. Hardware	1
B	24-11	Large Knob	1
C	763-20-1	Base Frame Assembly	1
D	763-1-40	Base Hood	1
E	4-20	Soc. Hd. Cap Screw	4
F	33-2	Knob	1
H	28-95	Retaining Ring	1
J	715-1-133	Spring Guide	1
K	763-1-15	Jack Spring	1
L	763-1-35	Brake Clamp	1
M	16-6	Kep Nut	4
N	763-20-16	Spring	1
P	(page 16)	Jack Assembly	1
R	17-6	Acorn Nut	3
S	11-4	Washer	3
T	763-1-29	Pedal Spacer	1
W	(page 18)	Pedal Assembly	1
Y	650-1-48	Rubber Bumper	1
Z	763-1-19	Pump Link Rod Assembly	1
AA	27-3	Cotter Pin	1
AB	763-1-28	Foot Grip	1
AC	763-1-37	Caster	3
AD	763-1-38	Caster Spacer	3
AE	763-1-30	End Cap	3
AF	763-201-30	Name Plate	1
AJ	763-20-21	Hose Sleeve	1
AK	763-1-16	Spring Holder	1
AL	763-1-33	Brake Nut	1
AM	763-1-34	Brake Rubber Stop	1
AP	763-3-1	"L" Tube Assembly	1
AR	(page 19)	Back Rest Assembly	1
AS	763-3-12	Adjustment Tube	1
AT	16-3	Fiberlock Nut	2
AW	2-18	Round Hd. Mach. Screw	2
AY	11-11	Nylon Washer	2
AZ	11-67	Flat Washer	3
BA	11-63	Flat Washer	8
BB	390-1-67	Washer	1
BC	28-97	Retaining Ring	1
BD	11-13	Flat Washer	2
BE	763-20-8	Control Lever	1
BF	4-85	Hex Soc. Hd. Cap Screw	2
BH	11-16	Flat Washer	2
BJ	763-20-13	Manifold Mounting Bracket	1
BK	38-15	Adjustable Clamp	2
BL	12-5	Lock Washer	2
BM	921-1-252	Serial Number Label	1
BP	12-7	Lock Washer	1
BR	15-13	Hex Nut	1
BT	3-44	Hex Hd. Cap Screw	2
BW	3-20	Hex Hd. Cap Screw	2
BY	11-2	Flat Washer	4
BZ	16-16	Fiberlock Hex Nut	2
CA	763-201-28	U-Bracket	1
CB	763-201-27	Adjustment Plate	2
CC	763-201-24	Pivot Assembly	2
CE	23-42	Self-Tapping Mach. Screw	2

# 763-101-2 Round Seat and Frame Assembly



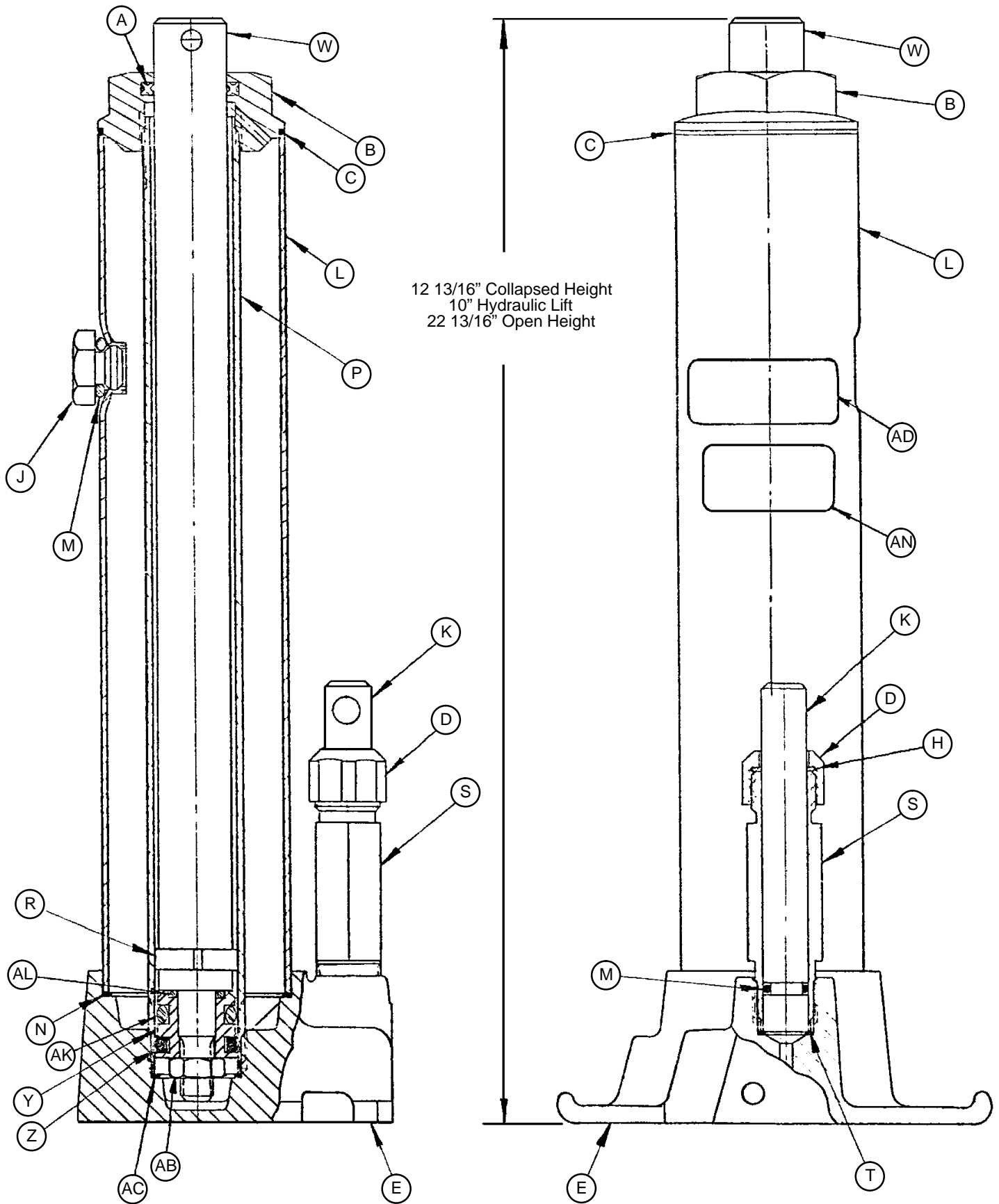
Item	Part No.	Part Name	Qty.
A	763-101-1	Round Seat	1
B	24-11	Knob	2
C	27-3	Cotter Pin	1
D	13-10	Washer	4
E	3-4	Hex Hd. Screw	4
F	763-6-2	Seat Frame Assembly	1

# 763-6 ObRound Seat and Frame Assembly

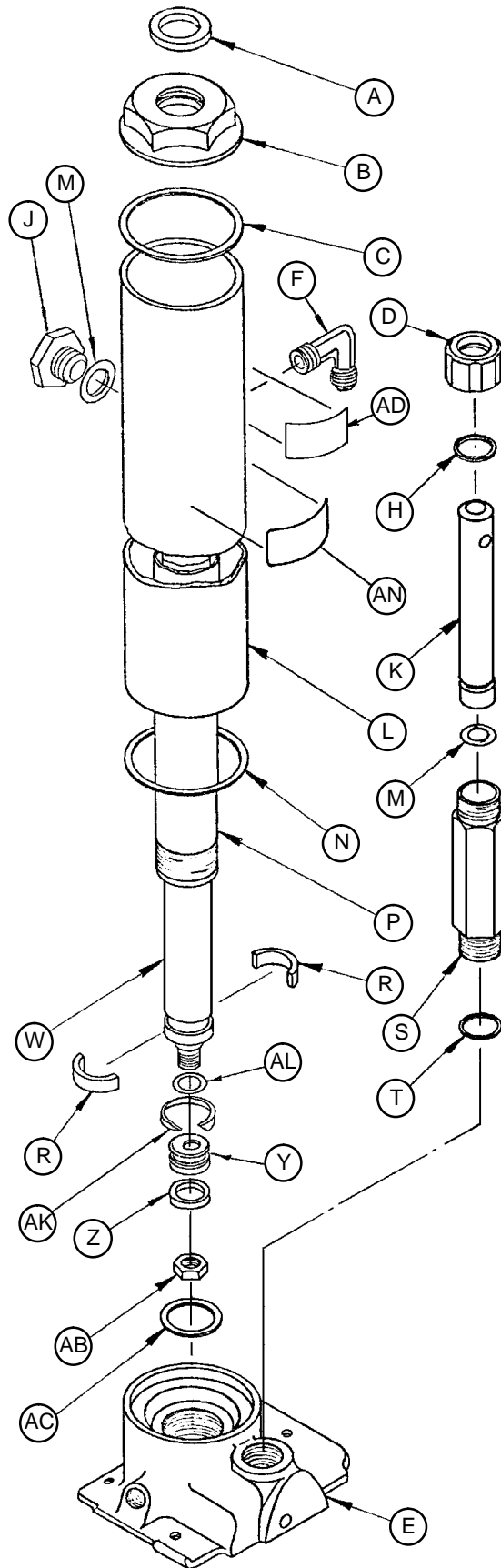


Item	Part No.	Part Name	Qty.
A	763-6-1	Seat	1
B	24-11	Knob	2
C	27-3	Cotter Pin	1
D	13-10	Washer	4
E	3-4	Hex Hd. Screw	4
F	763-6-2	Seat Frame Assembly	1

# 763-79 Jack Assembly



# 763-79 Jack Assembly



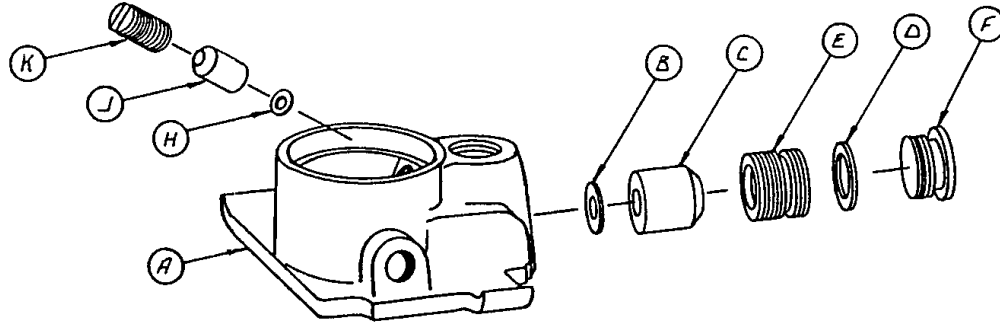


# 763–79 Jack Assembly

---

Item	Part No.	Part Name	Qty.
A	45–904	Quad Ring	1
B	390–2–121	Machined Cap	1
C	390–1–243	Gasket	1
D	390–2–137	Pump Cap	1
E	(page 17)	Jack Base Assembly	1
F	390–2–147	“L” Fitting	1
H	390–2–128	Packing	1
J	388–1–38	Plug	1
K	390–2–135	Pump Piston	1
L	763–20–6	Reservoir	1
M	45–110	O–Ring	2
N	390–1–244	Base Gasket	1
P	763–1–48	Actuator Cylinder	1
R	390–2–139	Retaining Collar	2
S	390–2–136	Pump Cylinder	1
T	390–1–237	Pump Gasket	1
W	763–1–49	Actuator	1
Y	926–20–160	Piston End	1
Z	926–20–161	Cup Packing	1
AB	15–13	Hex Jam Nut	1
AC	390–1–233	Actuator Gasket	1
AD	946–1–293	Label	1
AK	926–20–162	Wear Ring	1
AL	45–14	O–Ring	1
AN	36–35	Label	1
AP	763–20–22	Pressure Line (not shown)	1
AR	763–20–23	Return Line (not shown)	1
AS	763–20–34	Relief Valve (not shown)	1

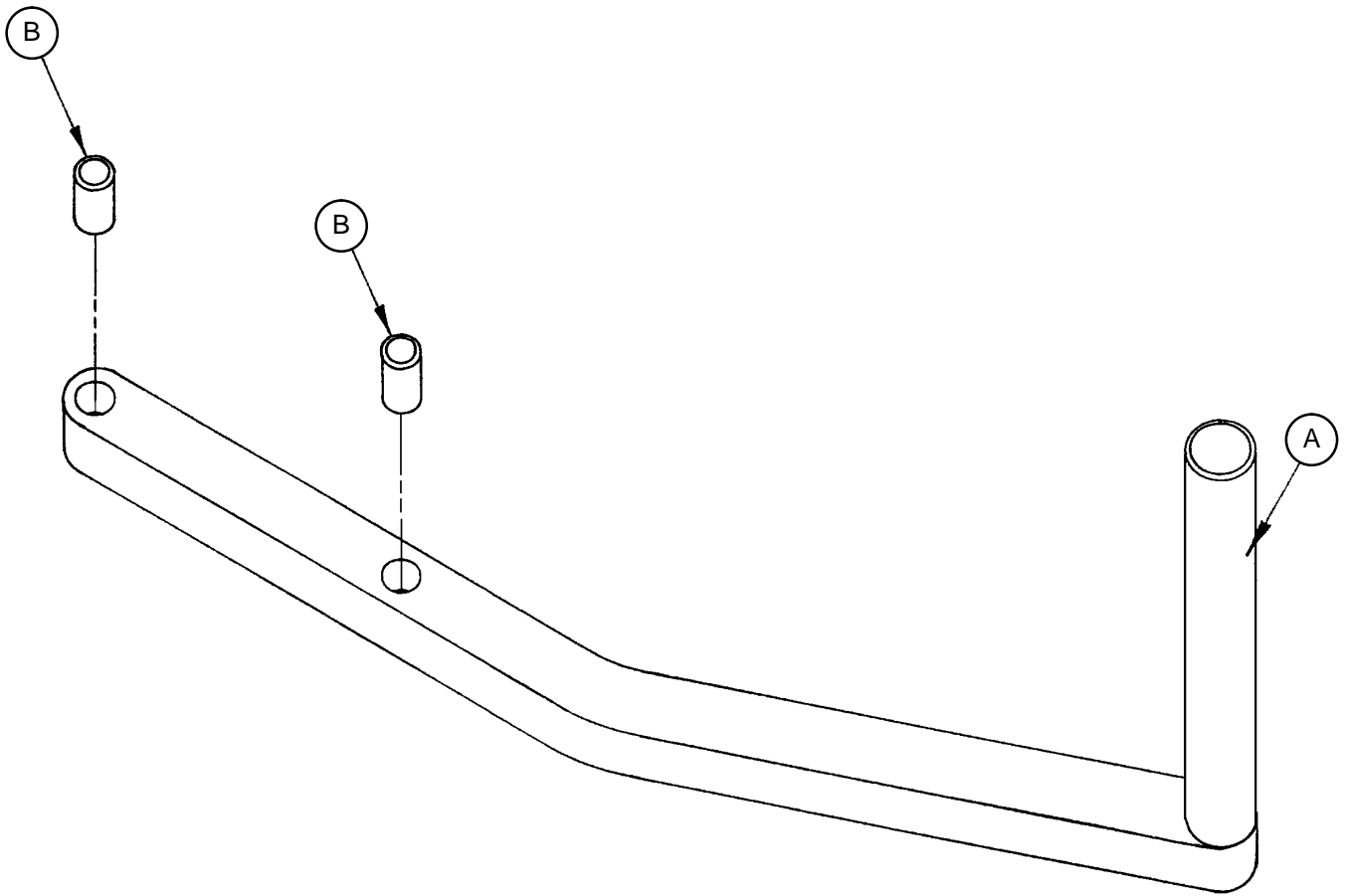
# 926-1-295 Jack Base Assembly



Item	Part No.	Part Name	Qty.
A	946-1-291	Jack Base	1
B	926-20-154	Seal	1
C	926-20-153	Check Valve	1
D	926-20-156	Seal	1
E	926-20-159	Valve Plug	1
F	926-20-157	Base Plug	1
H	926-20-155	Seal	1
J	926-20-152	Check Valve	1
K	926-20-158	Reservoir Plug	1

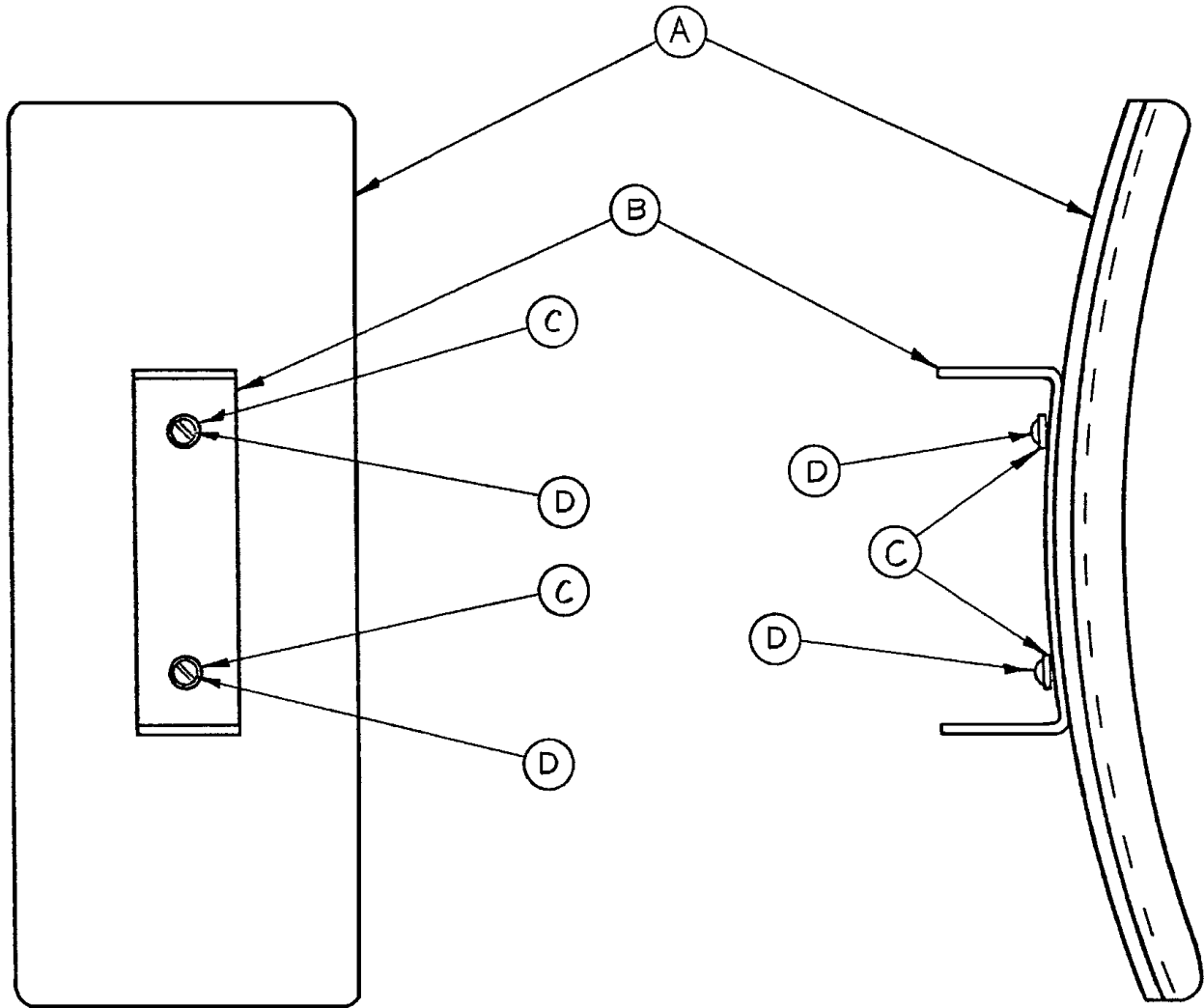
# 763-1-24 Pump Pedal Assembly

---



Item	Part No.	Part Name	Qty.
A	763-1-25	Pedal	1
B	81-2	Bearing	2

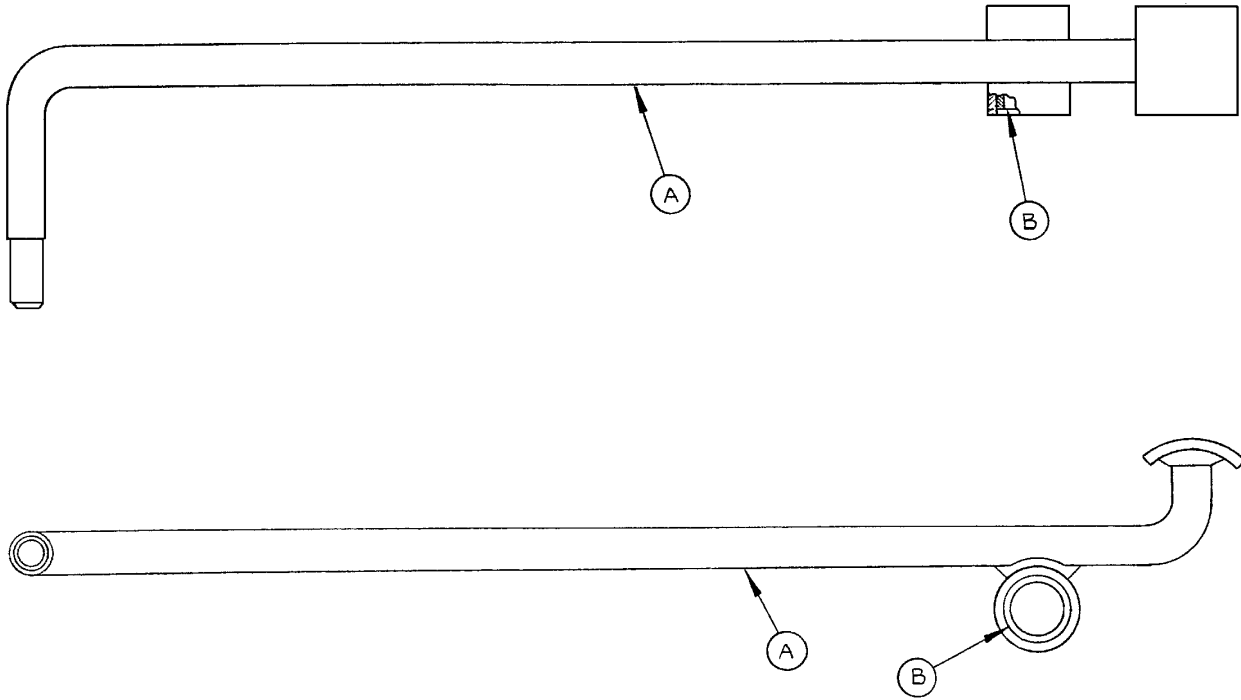
# 763-3-15 Padded Back Rest Assembly



Item	Part No.	Part Name	Qty.
A	763-3-14	Back Rest	1
B	763-3-16	Mounting Bracket	1
C	12-12	Lock Washer	2
D	2-59	Round Hd. Machine Screw	2

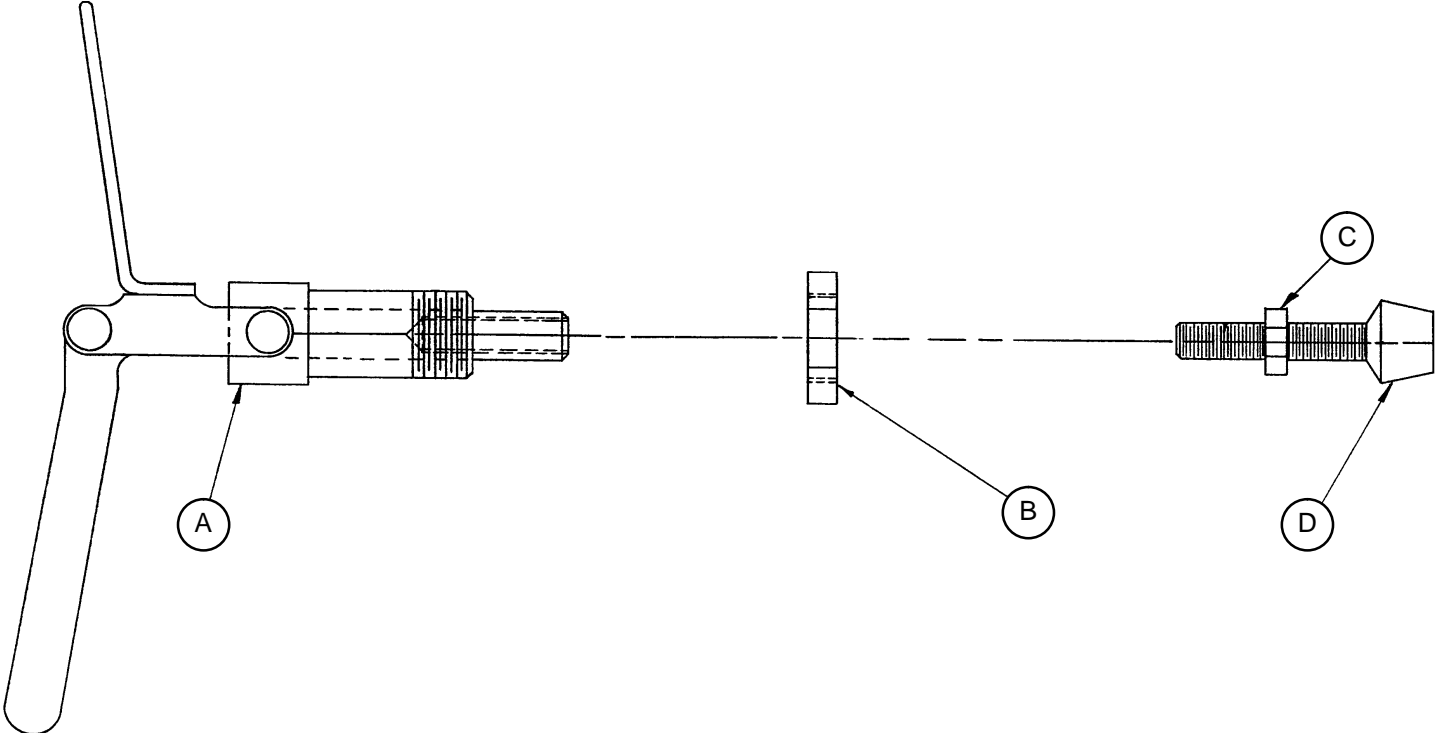
# 763-20-8 Control Lever Assembly

---



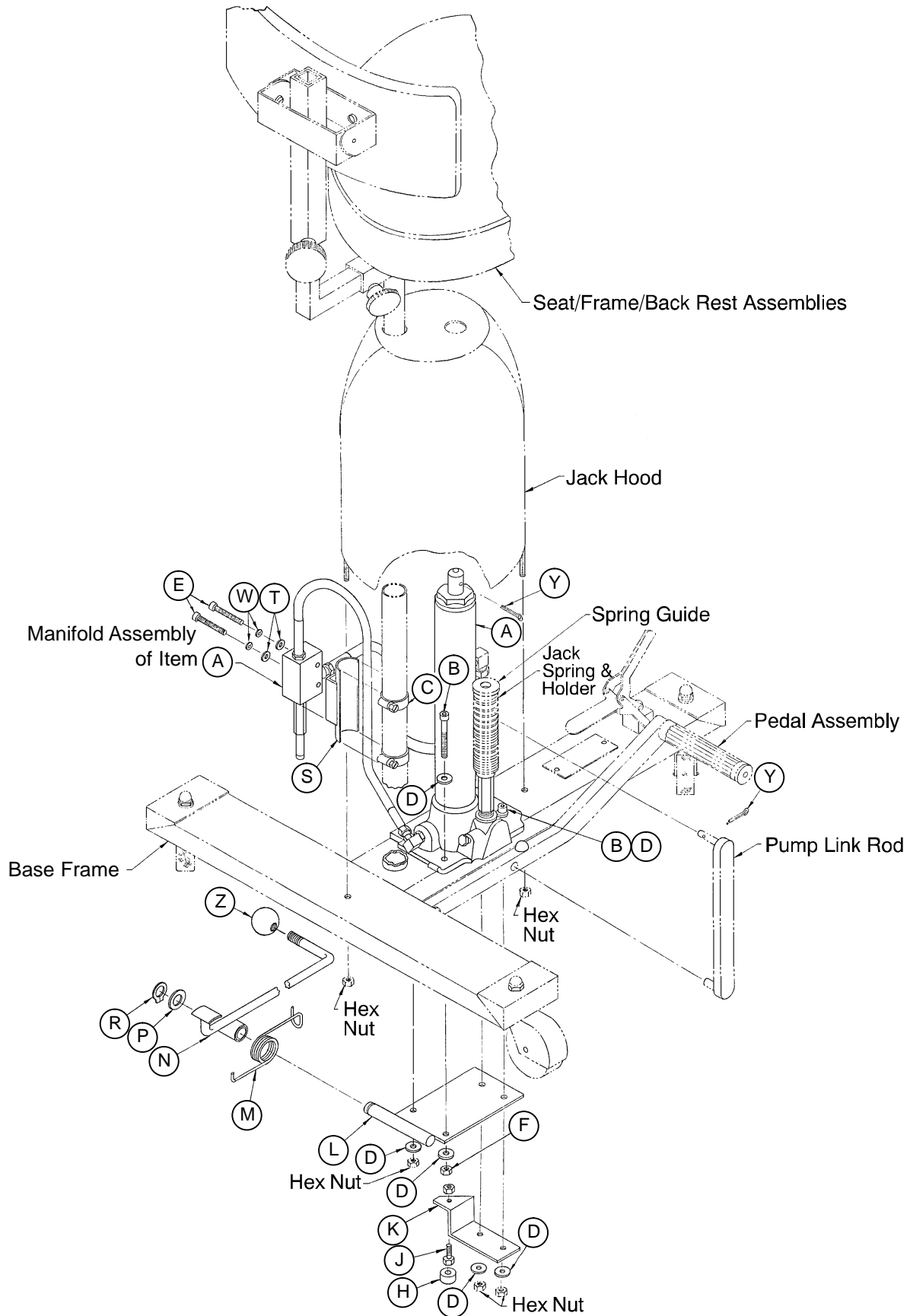
Item	Part No.	Part Name	Qty.
A	763-20-9	Control Lever	1
B	81-4	Sleeve Bearing	1

# Brake Assembly

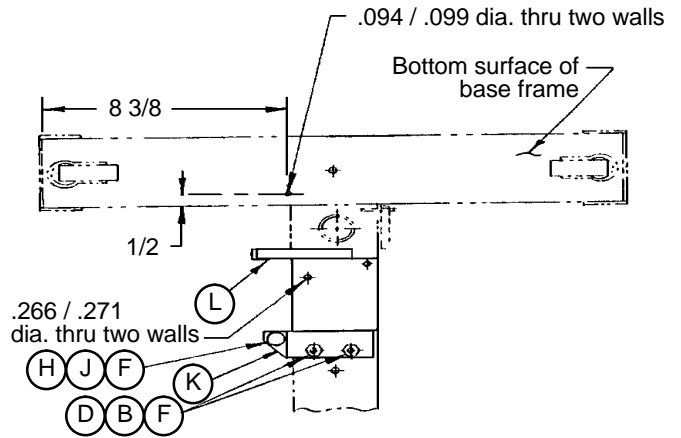
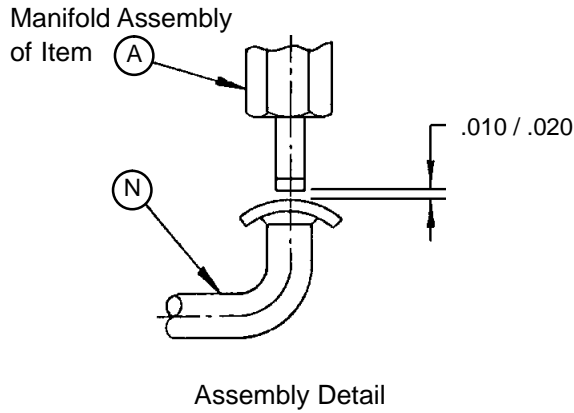


Item	Part No.	Part Name	Qty.
A	763-1-35	Clamp	1
B	763-1-33	Nut	1
C	763-1-32	Nut	1
D	763-1-34	Rubber Stop	1

# 763-20-28 Jack Conversion Kit



# 763-20-28 Jack Conversion Kit



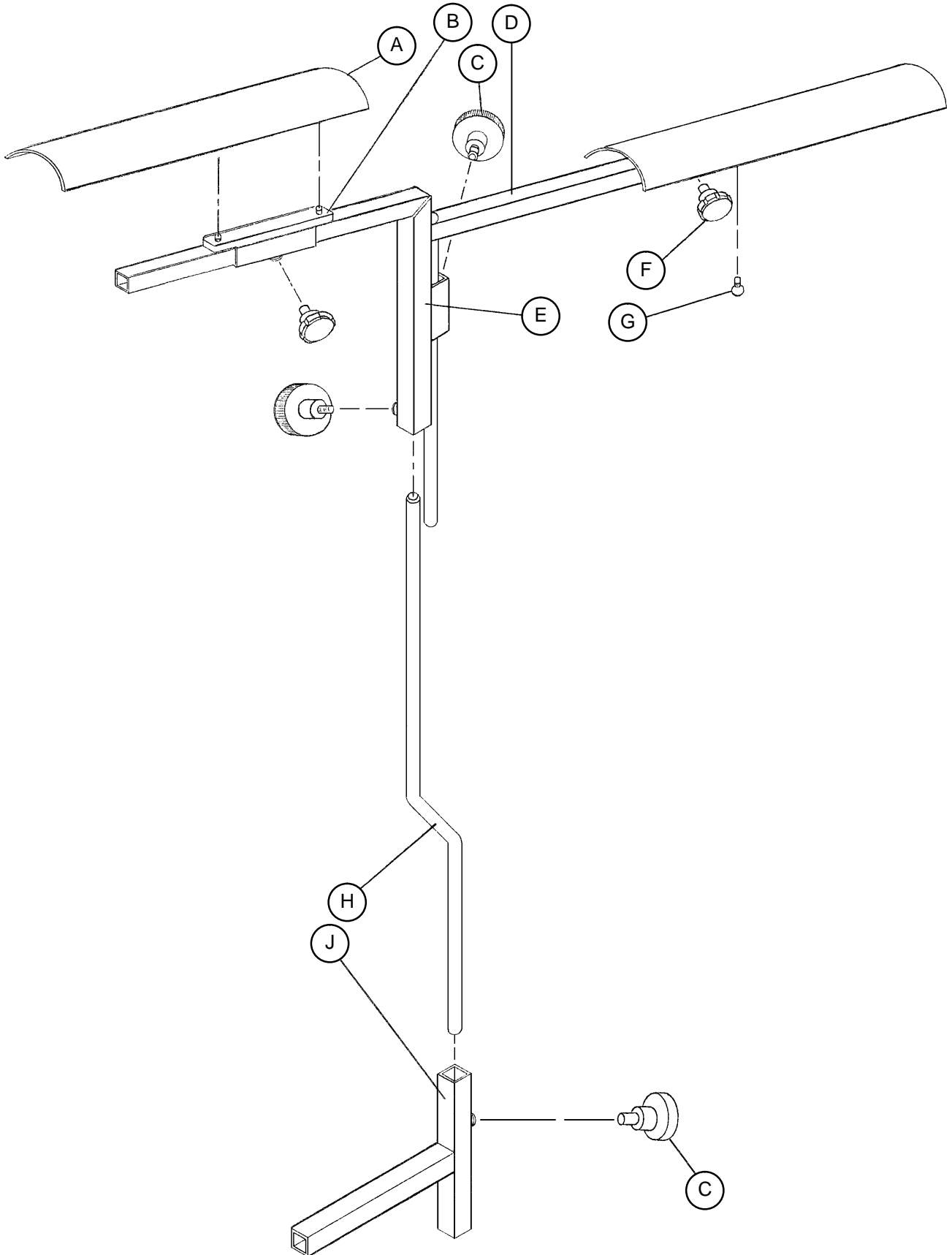
Base Frame Drilling Detail  
for Items A and M

Item	Part No.	Part Name	Qty.
A	(page 16)	Jack Assembly	1
B	4-24	Soc. Hd. Cap Screw	4
C	38-15	Adjustable Clamp	2
D	11-63	Flat Washer	8
E	4-85	Soc. Hd. Cap Screw	2
F	16-6	Kep Nut	6
H	37-11	Cap	1
J	3-2	Hex Hd. Cap Screw	1
K	763-20-24	Bracket	1
L	763-20-26	Pivot Plate Assembly	1
M	763-20-16	Spring	1
N	(page 20)	Control Lever Assembly	1
P	11-13	Flat Washer	1
R	28-1	Retaining Ring	1
S	763-20-13	Manifold Mounting Bracket	1
T	11-16	Flat Washer	2
W	12-15	Lock Washer	2
Y	27-3	Cotter Pin	2
Z	33-2	Knob	1



# 763-10 Optional Accessory Arm Rest Assembly

---

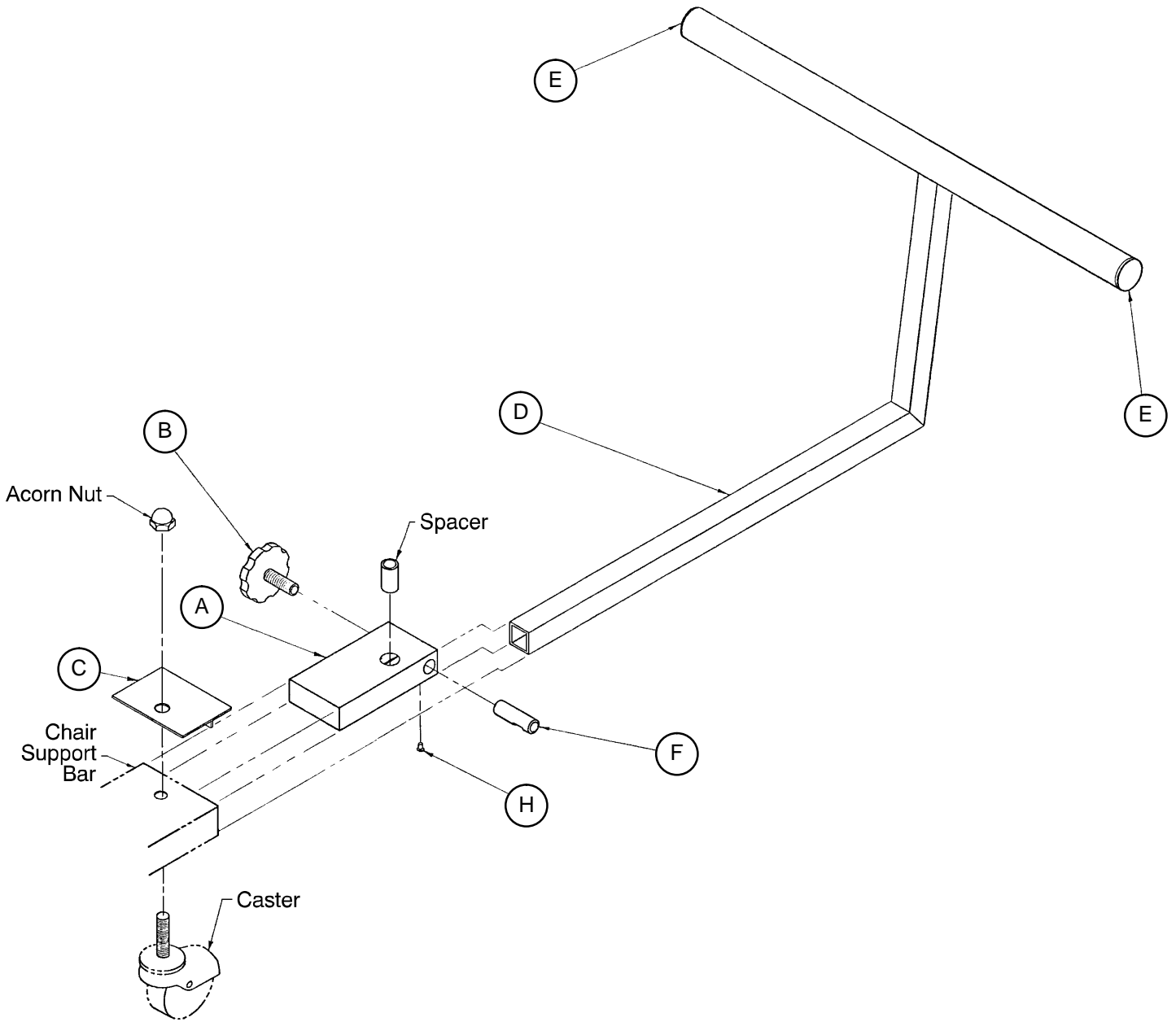


# 763–10 Optional Accessory Arm Rest Assembly

---

<b>Item</b>	<b>Part No.</b>	<b>Part Name</b>	<b>Qty.</b>
A	763–10–15	Arm Rest	2
B	763–10–19	Adaptor	2
C	24–11	Large Knob	4
D	763–10–12	Adjustable Main Support	1
E	763–10–7	Main Support	1
F	24–53	Fluted Knob	2
G	1–19	Machine Screw	4
H	763–10–5	Swivel Bar	1
J	763–10–1	Arm Support Bracket	1

# 763-5 Optional Foot Rest Assembly



Item	Part No.	Part Name	Qty.
A	763-5-1	Lock Block	1
B	24-20	Plastic Knob	1
C	763-5-6	Shield	1
D	763-5-3	Foot Support	1
E	37-2	Hole Plug	2
F	763-5-2	Lock Pin	1
H	2-6	Round Hd. Mach. Screw	1



## European Representative

Stryker France  
BP 50040-95946 Roissy Ch. de Gaulle  
Cedex-France

Phone: 33148632290  
Fax: 33148632175

**stryker<sup>®</sup>**  
**Medical**

6300 Sprinkle Road, Kalamazoo, MI 49001-9799

(800) 327-0770  
[www.strykermedical.com](http://www.strykermedical.com)



---

DH 7/01 763-20-35 REV C