

---

**IMPORTANT**  
File in your  
maintenance  
records

**stryker**<sup>®</sup>  
**Medical**

---

# **974 Fluoroscopy Stretcher**

---

## **OPERATIONS AND MAINTENANCE MANUAL**

For stretchers with serial numbers of 92062009 and above.

For Parts or Technical Assistance:  
1-800-327-0770

---

# Table of Contents

---

Introduction .....	2
Specifications .....	2
Warning/Caution/Note Definition .....	2
Base Operation .....	3
X-Ray Litter Operation .....	4
Fowler Operation .....	4
Cleaning .....	5
Preventative Maintenance Checklist .....	6
Hydraulic System Troubleshooting .....	7
Checking Hydraulic Fluid Level .....	7
Priming Pump .....	7
Assembly Drawings And Parts Lists	
Base Assembly (with Casters) .....	8, 9
Base Assembly (with Jacks) .....	10, 11
Base Release Pedals .....	12
Base Pump Pedal .....	13
Jack Assembly, Control End .....	14
Jack Assembly, Non-Control End .....	15
Jack Base Assembly .....	16
Combination Base Hood and Storage Tray Assembly .....	17
Litter Frame Assembly .....	18
Litter Carrier Assembly .....	19
Litter Assembly .....	20
Folddown Siderail Assembly, Left .....	21
Folddown Siderail Assembly, Right .....	22
Swing Siderail Assembly .....	23
Warranty	
Obtaining Parts and Service .....	24
Supplemental Warranty Coverage .....	24
Return Authorization .....	25
Freight Damage Claims .....	25

# Introduction

---

## INTRODUCTION

This manual is designed to assist you with the operation and maintenance of the 974 Fluoroscopy Stretcher. Read it thoroughly before using the stretcher or beginning any maintenance on it.

## SPECIFICATIONS

Maximum Weight Capacity	300 pounds
Overall Stretcher Length/Width	30" x 78"
Minimum/Maximum Stretcher Height	29"/41"
Fowler Angle	0° to 90°
Trendelenberg/Reverse Trendelenberg	-12° to +12°

## WARNING / CAUTION / NOTE DEFINITION

The words WARNING, CAUTION and NOTE carry special meanings and should be carefully reviewed.

---

### WARNING

The personal safety of the patient or user may be involved. Disregarding this information could result in injury to the patient or user.

---

### CAUTION

These instructions point out special procedures or precautions that must be followed to avoid damaging the equipment.

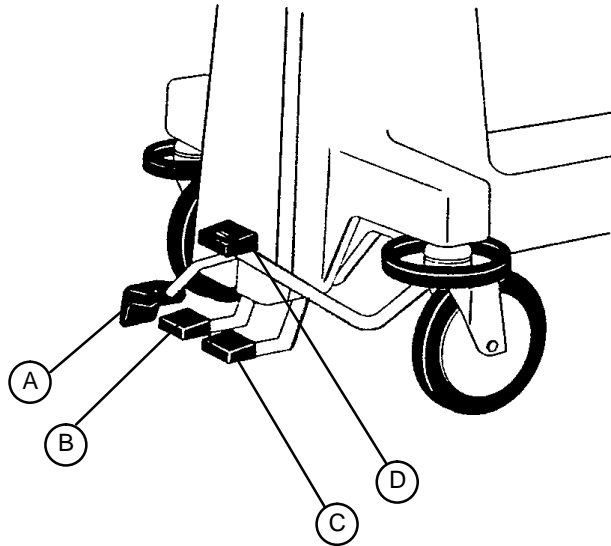
---

### NOTE

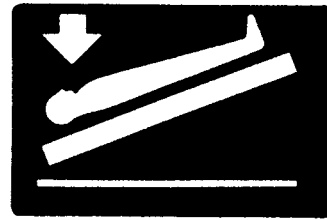
This provides special information to make maintenance easier or important instructions clearer.

# Operation Guide

## BASE OPERATION



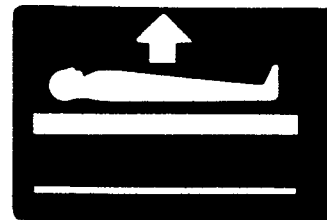
(A) Press fully down to engage four wheel brakes. Lift fully up to release brakes.



(B) Press to lower head end (Trendelenberg).



(C) Press to lower foot end (Reverse Trendelenberg).



(D) Pump pedal repeatedly to raise litter.

Lower both ends of the stretcher by pressing down on both Trendelenberg pedals at the same time.

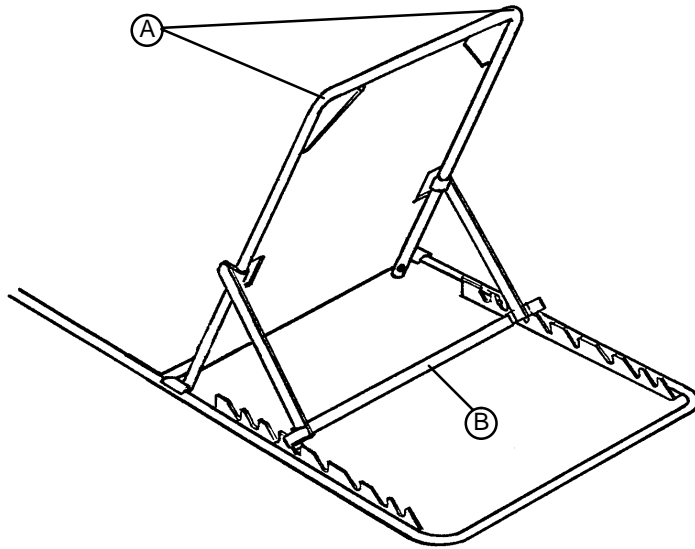
# Operation Guide

---

## X-RAY LITTER OPERATION

To position the movable X-Ray litter, loosen the roller lock knob located at the head end of the litter frame (reference item K, page 18). Slide the litter to the desired position and tighten the knob to hold the litter secure.

## FOWLER OPERATION



Lift up on handles (A). The brace assembly (B) will fall into position as the Fowler is raised to desired height.

---

### **CAUTION**

Be sure the brace assembly is securely locked in the Fowler supports before removing hands from handles.

# Cleaning

Hand wash all surfaces of the stretcher with warm water and mild detergent. Dry thoroughly. **DO NOT STEAM CLEAN, PRESSURE WASH, HOSE OFF OR ULTRASONICALLY CLEAN.** Using these methods of cleaning is **not** recommended and may void this product's warranty.

Clean Velcro **AFTER EACH USE**. Saturate Velcro with disinfectant and allow disinfectant to evaporate. (Appropriate disinfectant for nylon Velcro should be determined by the hospital.)

In general, when used in those concentrations recommended by the manufacturer, either phenolic type or quaternary type disinfectants can be used. Iodophor type disinfectants are not recommended for use because staining may result. The following products have been tested and have been found not to have a harmful effect on fabrics WHEN USED IN ACCORDANCE WITH MANUFACTURERS RECOMMENDED DILUTION.\*

TRADE NAME	DISINFECTANT TYPE	MANUFACTURER	*MANUFACTURER'S RECOMMENDED DILUTION
A33	Quaternary	Airwick (Professional Products Division)	2 ounces/gallon
A33 (dry)	Quaternary	Airwick (Professional Products Division)	1/2 ounce/gallon
Beaucoup	Phenolic	Huntington Laboratories	1 ounce/gallon
Blue Chip	Quaternary	S.C. Johnson	2 ounces/gallon
Elimstaph	Quaternary	Walter G. Legge	1 ounce/gallon
Franklin Phenomysan F2500	Phenolic	Purex Corporation	1 1/4 ounce/gallon
Franklin Sentinel	Quaternary	Purex Corporation	2 ounces/gallon
Galahad	Phenolic	Puritan Churchill Chemical Company	1 ounce/gallon
Hi-Tor	Quaternary	Huntington Laboratories	1/2 ounce/gallon
LPH	Phenolic	Vestal Laboratories	1/2 ounce/gallon
Matar	Phenolic	Huntington Laboratories	1/2 ounce/gallon
Omega	Quaternary	Airwick (Professional Products Division)	1/2 ounce/gallon
Quanto	Quaternary	Huntington Laboratories	1 ounce/gallon
Sanikleen	Quaternary	West Chemical Products	2 ounces/ gallon
Sanimaster II	Quaternary	Service Master	1 ounce/gallon
Vesphene	Phenolic	Vestal Laboratories	1 1/4 ounce/ gallon

Quaternary Germicidal Disinfectants, used as directed, and/or Chlorine Bleach products, typically 5.25% Sodium Hypochlorite in **dilutions ranging between 1 part bleach to 100 parts water, and 2 parts bleach to 100 parts water are not considered mild detergents. These products are corrosive in nature and may cause damage to your stretcher if used improperly.** If these types of products are used to clean Stryker patient handling equipment, measures must be taken to insure the stretchers are rinsed with clean water and thoroughly dried following cleaning. Failure to properly rinse and dry the stretchers will leave a corrosive residue on the surface of the stretcher, possibly causing premature corrosion of critical components.

## NOTE

Failure to follow the above directions when using these types of cleaners may void this product's warranty.

## REMOVAL OF IODINE COMPOUNDS

This solution may be used to remove iodine stains from mattress cover and foam footrest pad surfaces.

1. Use a solution of 1–2 tablespoons Sodium Thiosulfate in a pint of warm water to clean the stained area. Clean as soon as possible after staining occurs. If stains are not immediately removed, allow solution to soak or stand on the surface.
2. Rinse surfaces which have been exposed to the solution in clear water before returning bed to service.

# Preventative Maintenance

---

## CHECKLIST

- All fasteners secure (reference all assembly prints)
- Siderails move and latch properly (page 21–23)
- All casters lock with brake pedal engaged
- Brake cam pads not worn. (Replace, if necessary)
- Steer function working properly
- All casters secure and working properly
- Body restraints working properly
- Oxygen bottle holder intact and operating properly
- Fowler operates and latches properly (page 4)
- Trendelenberg/Reverse Trendelenberg operating properly (page 3)
- No rips or cracks in mattress cover
- Ground chain intact
- No leaks at hydraulic connections
- Hydraulic jacks holding properly (page 7)
- Hydraulic drop rate set properly
- Hydraulic oil level sufficient (page 7)
- Lubricate where required

Serial No. \_\_\_\_\_  
\_\_\_\_\_  
\_\_\_\_\_  
\_\_\_\_\_  
\_\_\_\_\_

Completed By: \_\_\_\_\_

Date: \_\_\_\_\_

# Service Information

## HYDRAULIC SYSTEM TROUBLESHOOTING

PROBLEM/SYMPTOM	POSSIBLE CAUSE	SOLUTION
Jack will not raise to full height.	Reservoir low on hydraulic fluid.	Add hydraulic fluid (see below).
One end of stretcher rises much slower than the other end.	Air in pump piston. Reservoir low on hydraulic fluid.	Prime pump (see below). Add hydraulic fluid (see below).
Jack will not pump up.	Lever assembly is in contact with valve stem on manifold assembly.  Air in pump piston. Defective jack.	Adjust length of control rod so there is a slight gap between lever and valve stem. Prime pump (see below). Replace jack.
Jack will not hold in raised position.	Lever assembly is in contact with valve stem on manifold assembly.  Defective valve.  Defective jack.  Internal leakage of oil past a valve or seal.	Adjust length of control rod so there is a slight gap between lever and valve stem. Fully elevate jack. Close needle valve by turning clockwise. If jack no longer sinks, needle valve is defective. Replace needle valve (part # 962-1-152). Fully elevate jack. Close needle valve by turning clockwise. If jack continues to sink, jack is defective. Replace jack. Assure all valves are fully closed by depressing and releasing appropriate pedal. Assure there is a slight gap between the lever assembly and the valve stem. Close the needle valve completely. If the jack holds, the leakage is in the release valve and the valve should be replaced.
Jack will not lower.	Valve support is loose and out of position.	Reposition valve support and tighten screws.

Contact Stryker technical service at 1-800-327-0770 for further assistance.

### CHECKING HYDRAULIC FLUID LEVEL

1. Lower jack completely.
2. Remove fill plug on side of jack.
3. The hydraulic fluid should be visible at the bottom of the fill hole. If it is not, add Mobil Aero HFA hydraulic fluid (Stryker part number 2020-70-475) until the fluid is visible at the bottom of the fill hole. Replace the fill plug.

### CAUTION

Use of other types of oil may damage hydraulic units.

### PRIMING PUMP

1. Remove pump link and remove spring.

### CAUTION

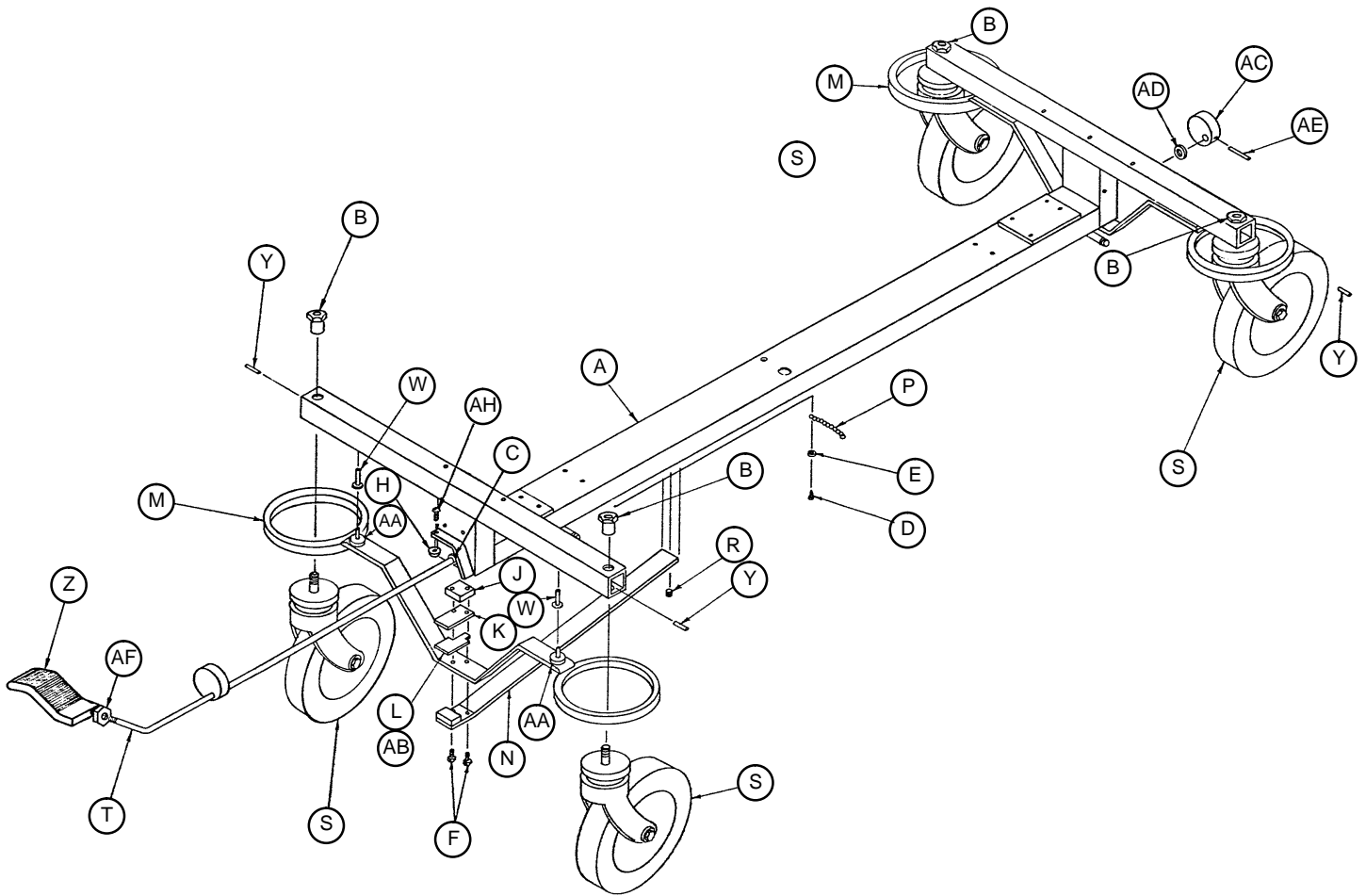
Pump link is spring loaded. Use caution when removing it or injury could occur.

2. To remove air, actuate pump by hand, making sure the pump piston bottoms. Reassemble and check for leaks.



# Base Assembly with Casters

Assembly part number 946-42-10 (reference only)

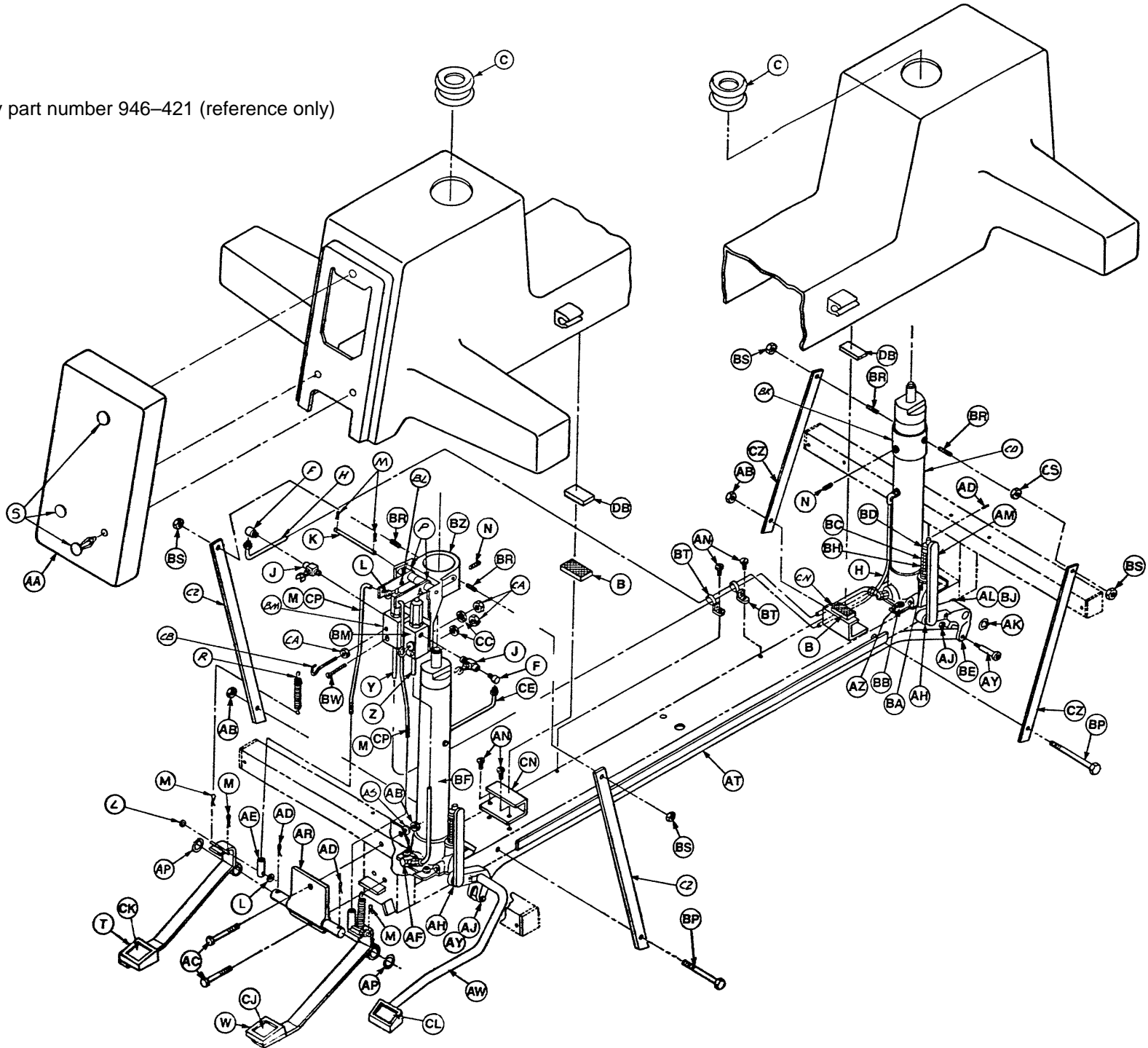


# Base Assembly with Casters

---

Item	Part No.	Part Name	Qty.
A	946-1-210	Drop Base Assembly	1
B	715-1-158	Caster Nut	4
C	946-1-117	Brake Rod Bushing	2
D	23-13	Sheet Metal Screw	1
E	11-1	Flat Washer	1
F	3-4	Hex Hd. Cap Screw	4
H	650-15-5	Bumper	1
J	390-1-119	Plate Cam Pad	2
K	390-1-14	Cam Wear Strip	2
L	390-1-183	Cam Wear Strip Spacer	A/R
M	390-1-206	Caster Brake Assembly	2
N	390-1-116	Hvy. Dty. Brake Spring Bar	2
P	390-1-176	Ground Chain	1
R	21-37	Set Screw	2
S	946-1-276	Carpet Caster Assembly	4
T	946-1-198	Cam Brake Rod Assembly	1
W	946-1-116	Brake Bar Bushing	4
Y	26-5	Roll Pin	4
Z	946-1-111	Brake Pedal, Machined	1
AA	946-1-115	Brake Cushion	4
AB	390-1-184	Cam Wear Strip Spacer	2
AC	390-1-21	Cam , Foot	1
AD	14-10	Nylon Washer	A/R
AE	26-14	Roll Pin	1
AF	15-26	Hex Jam Nut	1
AH	50-19	Pan Hd. Mach. Screw	1

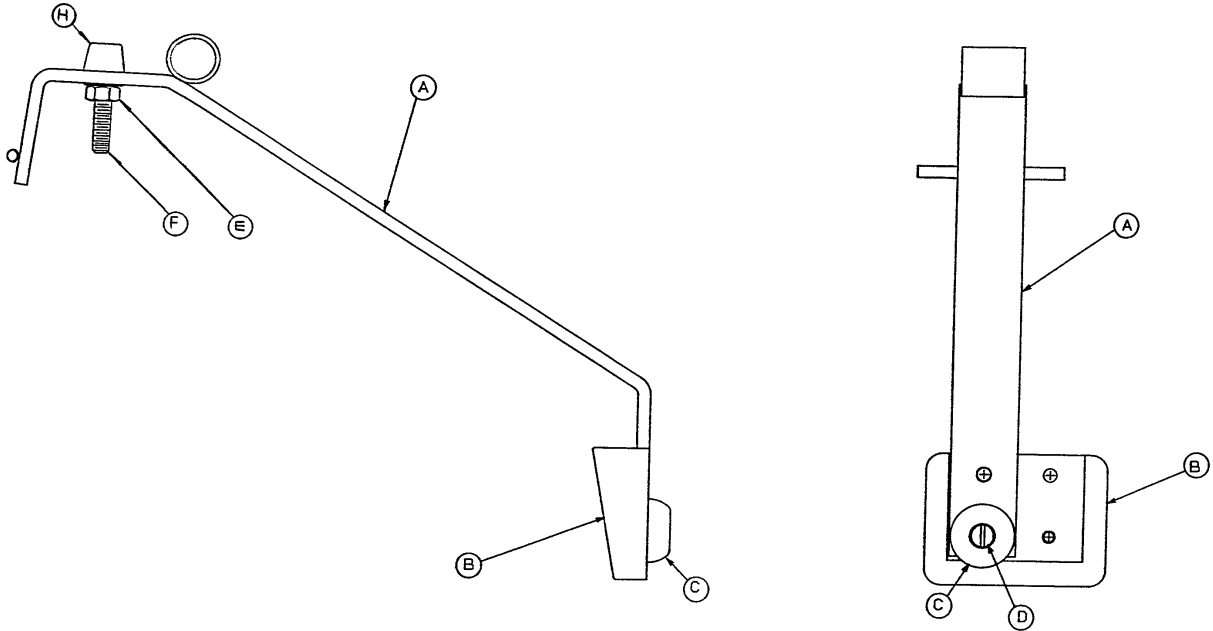
Assembly part number 946-421 (reference only)



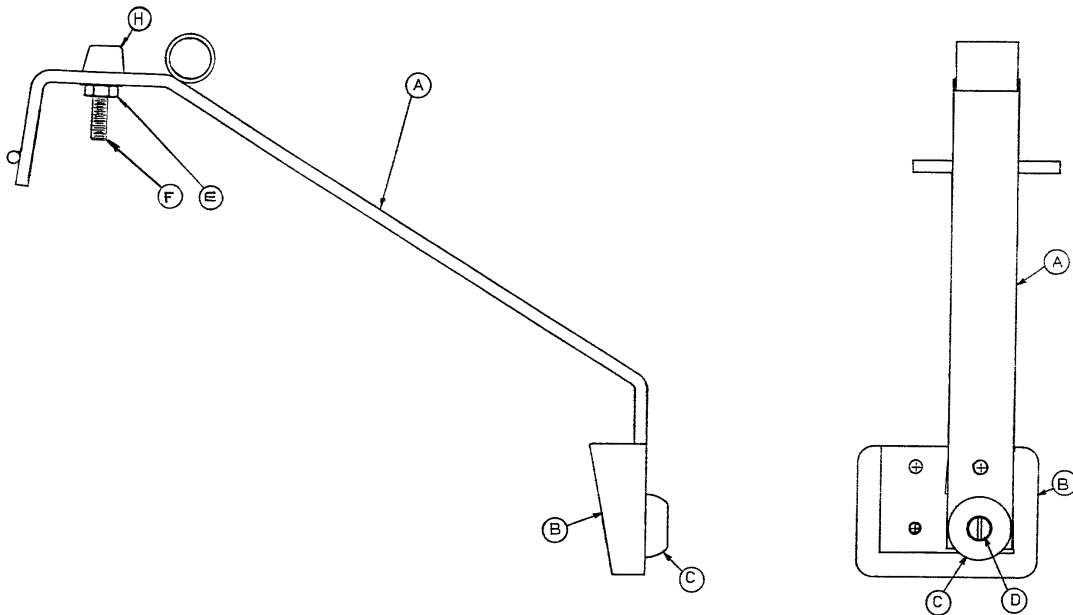
# Base Assembly with Jacks

Item	Part No.	Part Name	Qty.	Item	Part No.	Part Name	Qty.
B	29-7	Dual Lock	2	BB	11-63	Washer	8
C	946-421-5	Grommet	2	BC	763-1-15	Jack Spring	2
F	48-12	90° Street Elbow	2	BD	763-1-14	Spring Guide	2
H	390-2-103	Return Line	1	BE	390-1-86	Rear Piv. Link Brg. Ass'y	1
J	48-13	Needle Valve	2	BF	(page 14)	Jack Ass'y, Control End	1
K	390-2-64	Pin	1	BH	763-1-16	Sleeve	2
L	11-1	Washer	6	BJ	14-7	Washer	A/R
M	27-4	Cotter Pin	8	BK	390-3-198	Rear Support Collar	1
N	21-25	Set Screw	2	BL	763-1-13	Jack Spring	2
P	390-2-65	Lever Assembly	2	BM	962-1-59	Manifold Assembly	2
R	38-32	Extension Spring	2	BP	3-37	Hex Hd. Cap Screw	2
S	17-17	Single Head Clip	3	BR	21-95	Set Screw	4
T	(page 12)	Left Pedal Base Ass'y	1	BS	15-12	Hex Nut	4
W	(page 12)	Right Pedal Base Ass'y	1	BT	38-31	Cable Tie	2
Y	390-2-102	Pressure Line	1	BW	2-15	Machine Screw	2
Z	390-2-101	Pressure Line	1	BZ	390-3-196	Valve Support	1
AA	946-21-15	End Cap, Foot Control	1	CA	15-3	Hex Nut	6
AB	16-6	Kep Nut	4	CB	390-2-119	Modified Eye Bolt	2
AC	3-32	Hex Hd. Cap Screw	2	CC	12-5	Lock Washer	4
AD	27-3	Cotter Pin	4	CD	(page 15)	Jack Ass'y, Non-Cont.	1
AE	390-2-70	Adjustment Rod	2	CE	390-2-104	Return Line, Control End	1
AF	48-14	90° Swivel Coupling	2	CF	974-1-252	Label, Spec. (not shown)	1
AH	14-9	Washer	2	CJ	946-1-61	Label, Trend.	1
AJ	16-11	Hex Nut	2	CK	946-1-62	Label, Rev. Trend	2
AK	28-97	Retaining Ring	2	CL	946-1-63	Label, Bed Up	1
AL	11-13	Washer	2	CN	390-3-218	Spacer Cover	2
AM	763-1-19	Pump Link Rod Ass'y	2	CP	946-421-8	Control Rod, Drop Base	2
AN	23-25	Hex Wash. Hd. Tap. Scr.	6	CS	15-22	Hex Nut	1
AP	11-46	Washer	2	CW	921-1-252	Label, Serial Number	1
AR	390-3-194	Hinge Plate	1	CY	946-1-60	Stryker Logo Label	2
AS	11-53	Washer	2	CZ	390-2-113	Straight Support Bar	4
AT	946-1-165	Pump Conn. Rod Ass'y	1	DA	974-1-191	Label, End (not shown)	2
AW	(page 13)	Pump Pedal Ass'y	1	DB	29-9	Dual Lock	2
AY	8-12	Shoulder Bolt	2	DD	946-1-167	Hole Cover	1
AZ	4-14	Soc. Hd. Cap Screw	8	DE	974-1-190	Label, Side (not shown)	2
BA	390-1-67	Jack Washer	2				

## 946-1-159 Release Pedal Assembly, Right



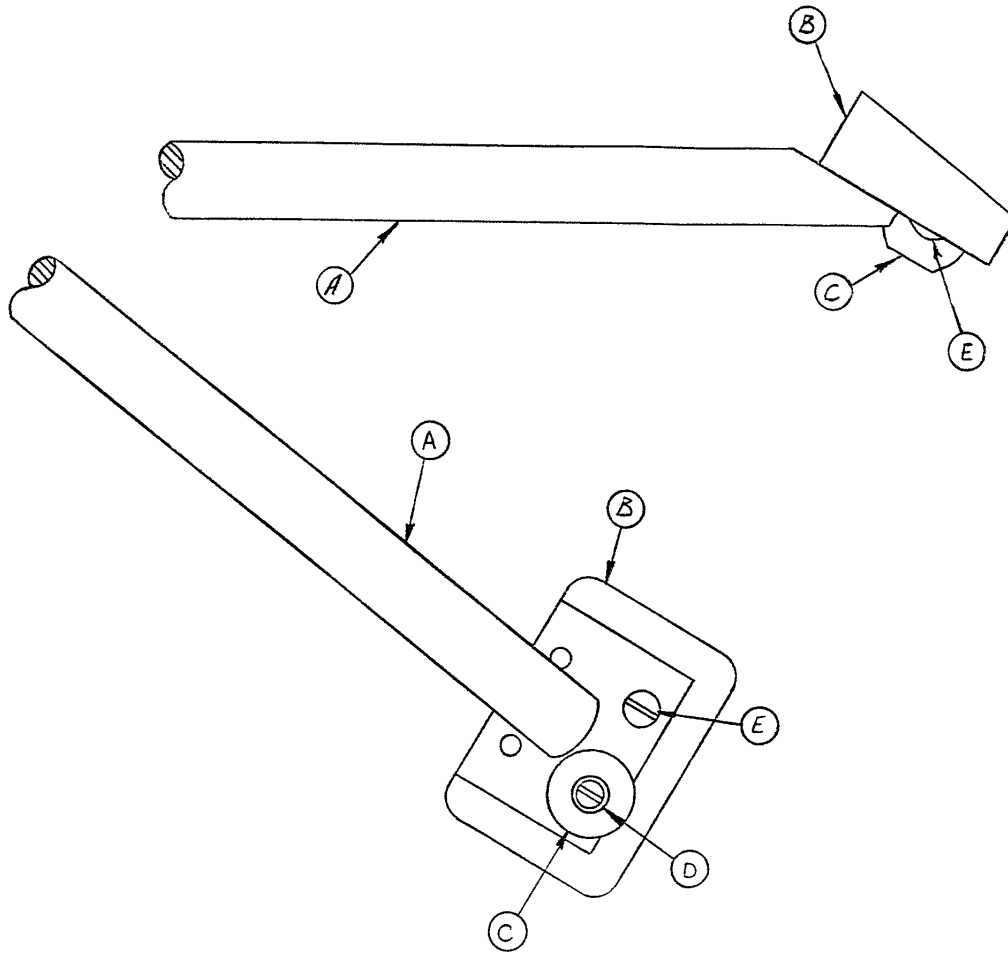
## 946-1-160 Release Pedal Assembly, Left



Item	Part No.	Part Name	Qty.
A	946-1-150	Pedal Weldment	1
B	946-1-153	Pedal	1
C	946-1-155	Bumper	1
D	2-18	Rd. Hd. Mach. Screw	1
E	16-6	Hex Nut	1
F	3-3	Hex Hd. Cap Screw	1
H	37-11	Neoprene Cap	1

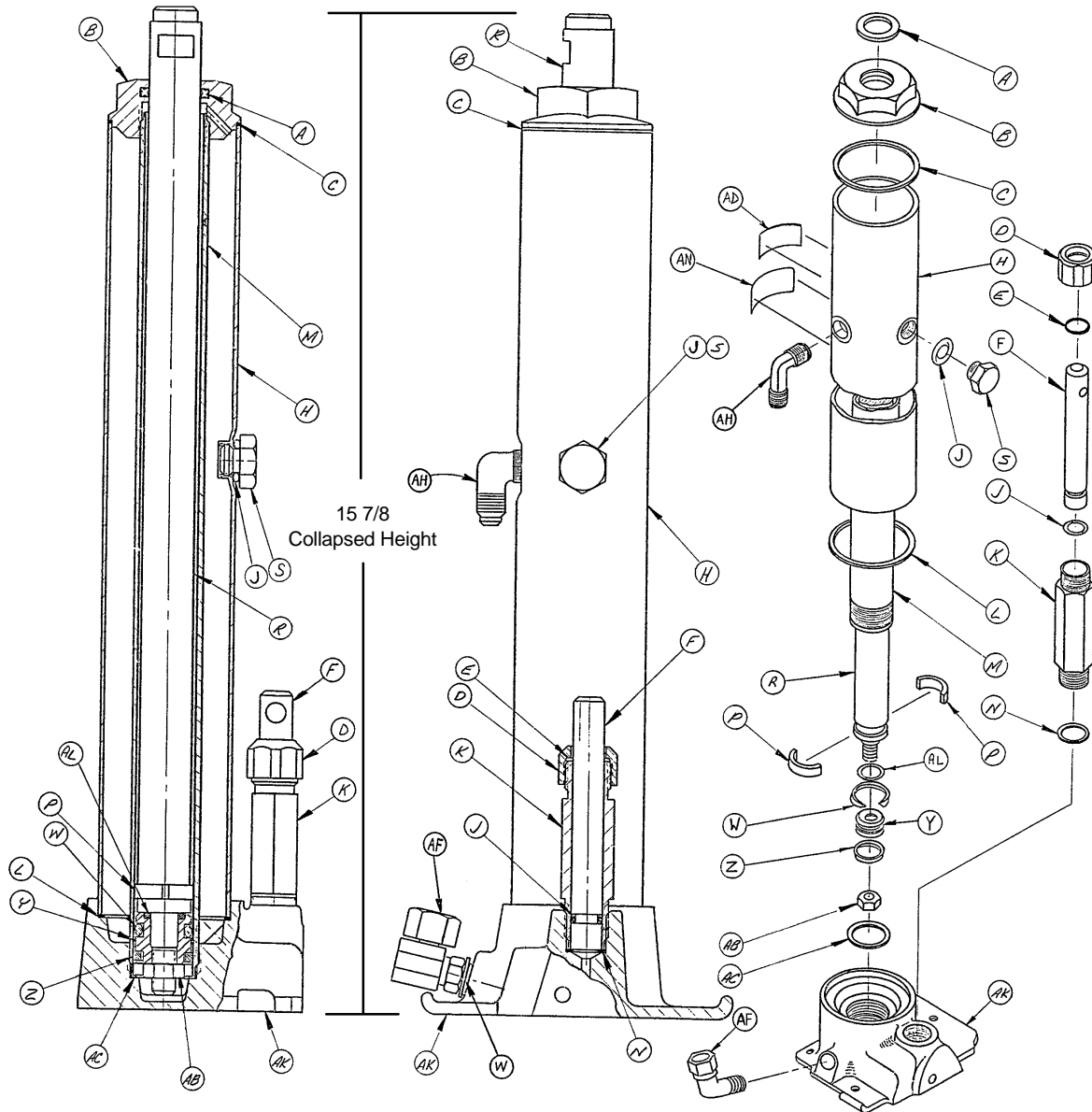
# 946-2-56 Pump Pedal Assembly

---



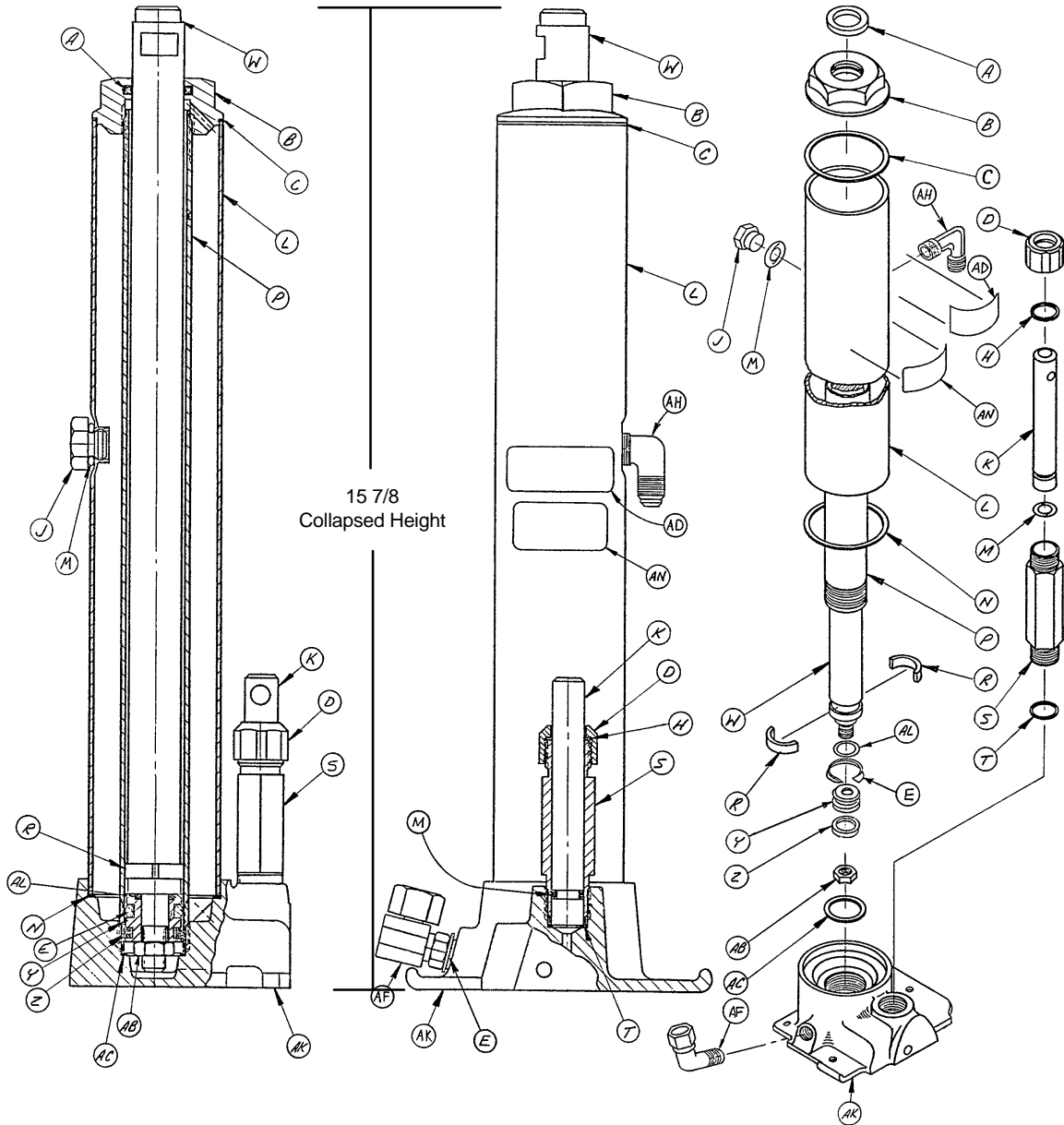
Item	Part No.	Part Name	Qty.
A	946-2-55	Pump Link & Bar Ass'y	1
B	946-1-153	Pedal Base	1
C	946-1-155	Bumper	1
D	2-18	Rd. Hd. Mach. Screw	1
E	2-17	Rd. Hd. Mach. Screw	1

# 390-80 Foot Control Jack Assembly (Control End)



Item	Part No.	Part Name	Qty.	Item	Part No.	Part Name	Qty.
A	45-904	Quad Ring	1	W	926-20-162	Wear Ring	1
B	390-2-121	Machined Cap	1	Y	926-20-160	Piston End	1
C	390-1-243	Gasket	1	Z	926-20-161	Cup Packing	1
D	390-2-137	Pump Cap	1	AB	15-13	Hex Jam Nut	1
E	390-2-128	Packing	1	AC	390-1-238	Actuator Gasket	1
F	390-2-135	Pump Piston	1	AD	946-1-293	Label	1
H	390-2-149	Reservoir	1	AF	48-14	90° Swivel Coupling	1
J	45-110	O-Ring	2	AH	390-2-147	90° Male Elbow	1
K	390-2-136	Pump Cylinder	1	AK	(page 16)	Jack Base	1
L	390-1-244	Base Gasket	1	AL	45-14	O-Ring	1
M	390-2-126	Actuator Cylinder	1	AN	36-22	Label	1
N	390-1-237	Pump Gasket	1	AP	962-1-152	Relief Valve (not shown)	1
P	390-2-139	Retaining Collar	2	AQ	390-2-104	Low Pressure Hose (not shown)	1
R	390-2-127	Actuator	1	AR	390-2-101	Pressure Line (not shown)	1
S	388-1-38	Plug	1	AS	390-2-183	Seal Kit (not shown)	A/R

# 390-79 Foot Control Jack Ass'y (Non-Control End)

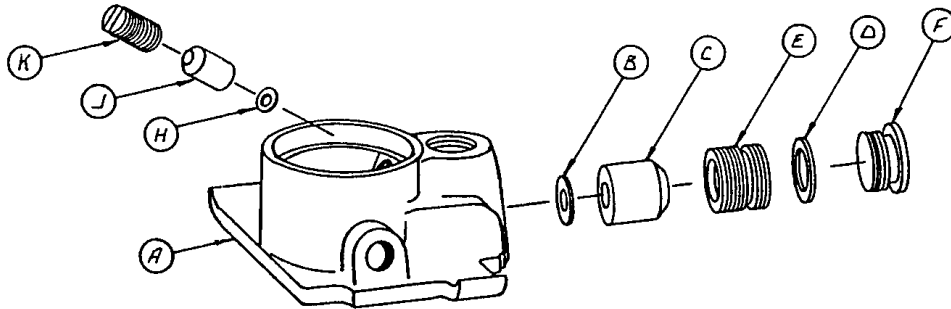


Item	Part No.	Part Name	Qty.	Item	Part No.	Part Name	Qty.
A	45-904	Quad Ring	1	W	390-2-127	Actuator	1
B	390-2-121	Machined Cap	1	Y	926-20-160	Piston End	1
C	390-1-243	Gasket	1	Z	926-20-161	Cup Packing	1
D	390-2-137	Pump Cap	1	AB	15-13	Hex Jam Nut	1
E	926-20-162	Wear Ring	1	AC	390-1-238	Actuator Gasket	1
H	390-2-128	Packing	1	AD	946-1-293	Label	1
J	388-1-38	Plug	1	AF	48-14	90° Swivel Coupling	1
K	390-2-135	Pump Piston	1	AH	390-2-147	90° Male Elbow	1
L	390-2-149	Reservoir	1	AK	(page 16)	Jack Base	1
M	45-110	O-Ring	2	AL	45-14	O-Ring	1
N	390-1-244	Base Gasket	1	AN	36-23	Label	1
P	390-2-126	Actuator Cylinder	1	AP	962-1-152	Relief Valve (not shown)	1
R	390-2-139	Retaining Collar	2	AR	390-2-103	Low Pressure Line (not shown)	1
S	390-2-136	Pump Cylinder	1	AS	390-2-102	Pressure Line (not shown)	1
T	390-1-237	Pump Gasket	1	AT	390-2-183	Seal Kit (not shown)	A/R



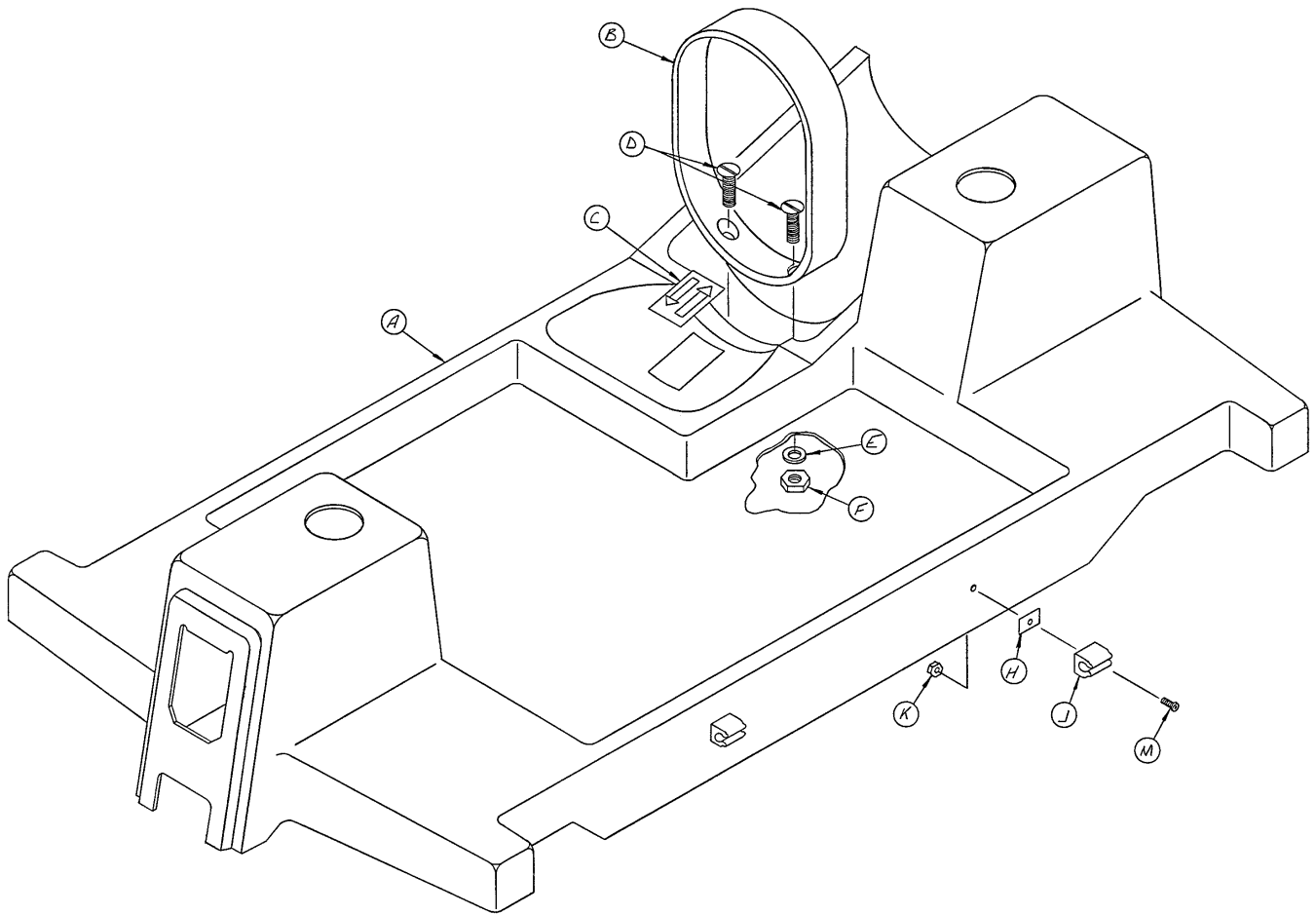
# Jack Base Assembly

Assembly part number 926-1-290 (Hand Control Jack)  
 Assembly part number 926-1-295 (Foot Control Jack)  
 (reference only)



Item	Part No.	Part Name	Qty.
A	946-1-289	Jack Base, Hand Control	1
	946-1-291	Jack Base, Foot Control	1
B	926-20-154	Seal	1
C	926-20-153	Check Valve	1
D	926-20-156	Seal	1
E	926-20-159	Valve Plug	1
F	926-20-157	Base Plug	1
H	926-20-155	Seal	1
J	926-20-152	Check Valve	1
K	926-20-158	Reservoir Plug	1

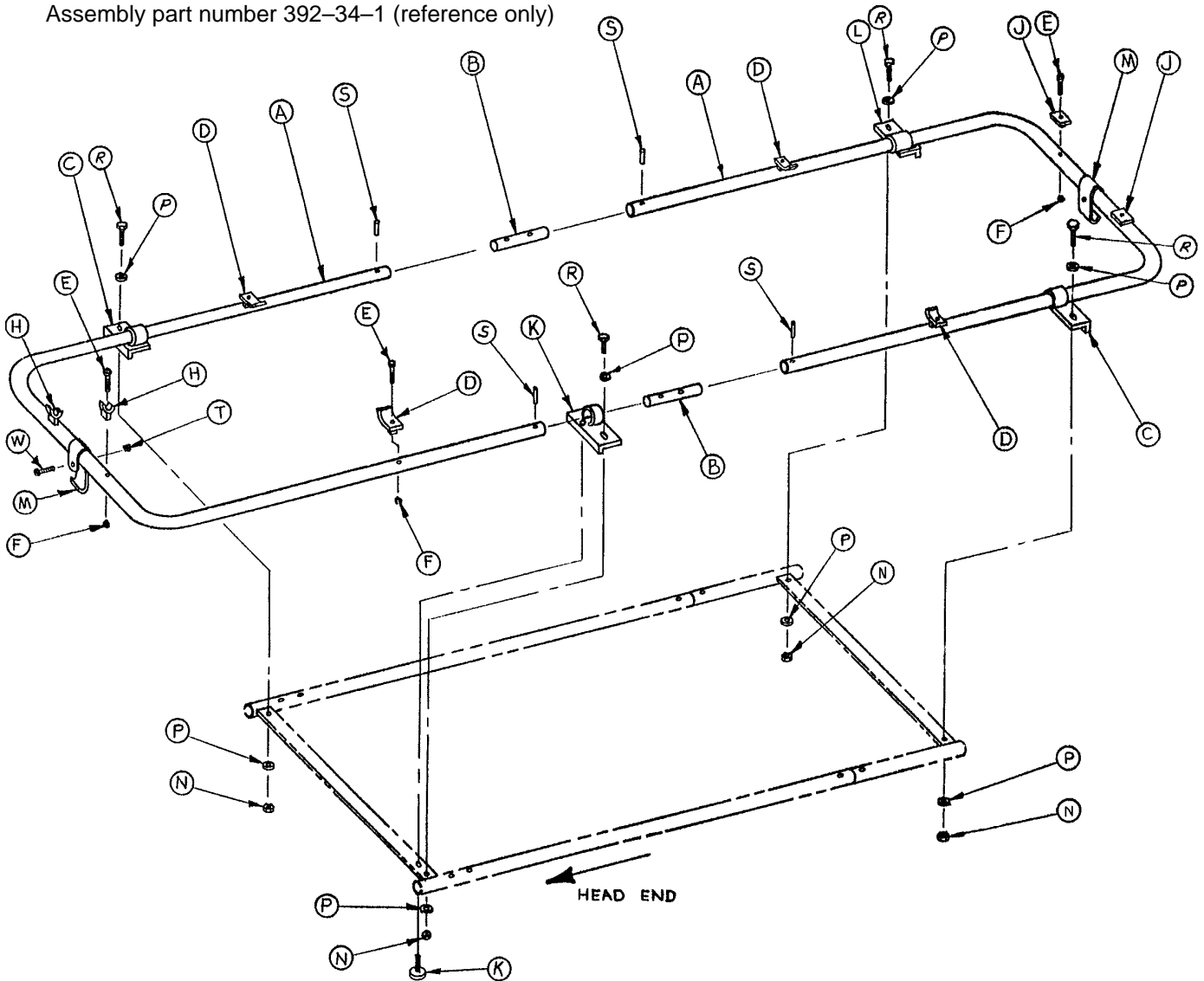
# 926-30-100 Optional Combination Hood & Tray Ass'y



Item	Part No.	Part Name	Qty.
A	926-130-22	Hood Assembly	1
B	926-30-15	Bottle Ring	1
C	926-29-22	Label	1
D	1-25	Flat Hd. Mach. Screw	2
E	11-63	Flat Washer	2
F	16-16	Fiberlock Nut	2
H	946-1-109	Adhesive Pad	4
J	946-1-108	I.V. Clip	4
K	16-27	Kep Nut	4
M	4-57	Soc. Hd. Cap Screw	4

# Litter Frame Assembly

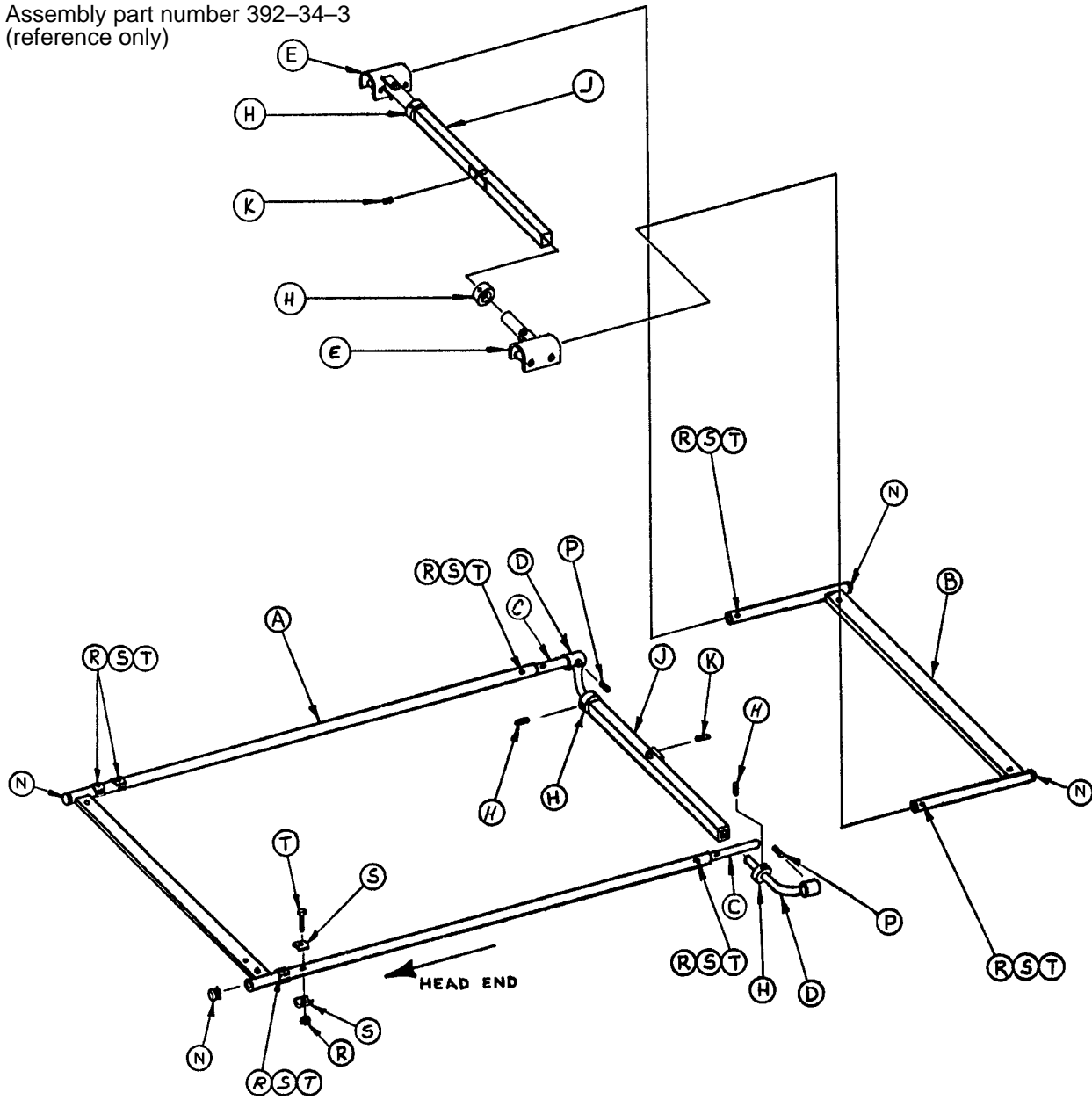
Assembly part number 392-34-1 (reference only)



Item	Part No.	Part Name	Qty.
A	392-33-2	Foot End Tube	2
B	391-33-6	Connecting Pin	2
C	391-33-13	Roller Mount Bracket Ass'y	2
D	391-34-7	Side Pad Assembly	4
E	4-10	Soc. Hd. Cap Screw	8
F	16-5	Conelock Nut	8
H	391-34-8	Head End Pad Assembly	2
J	391-34-6	Foot End Pad Assembly	2
K	391-33-7	Roller Mount Lock Ass'y	1
L	391-33-15	Roller Mount Bracket Ass'y	1
M	391-34-4	Gamma Spring Clip	2
N	16-12	Flexlock Nut	4
P	11-4	Washer	8
R	3-24	Hex Hd. Cap Screw	4
S	26-35	Roll Pin	4
T	16-7	Locknut	2
W	2-4	Rd. Hd. Mach. Screw	2

# Litter Carrier Assembly

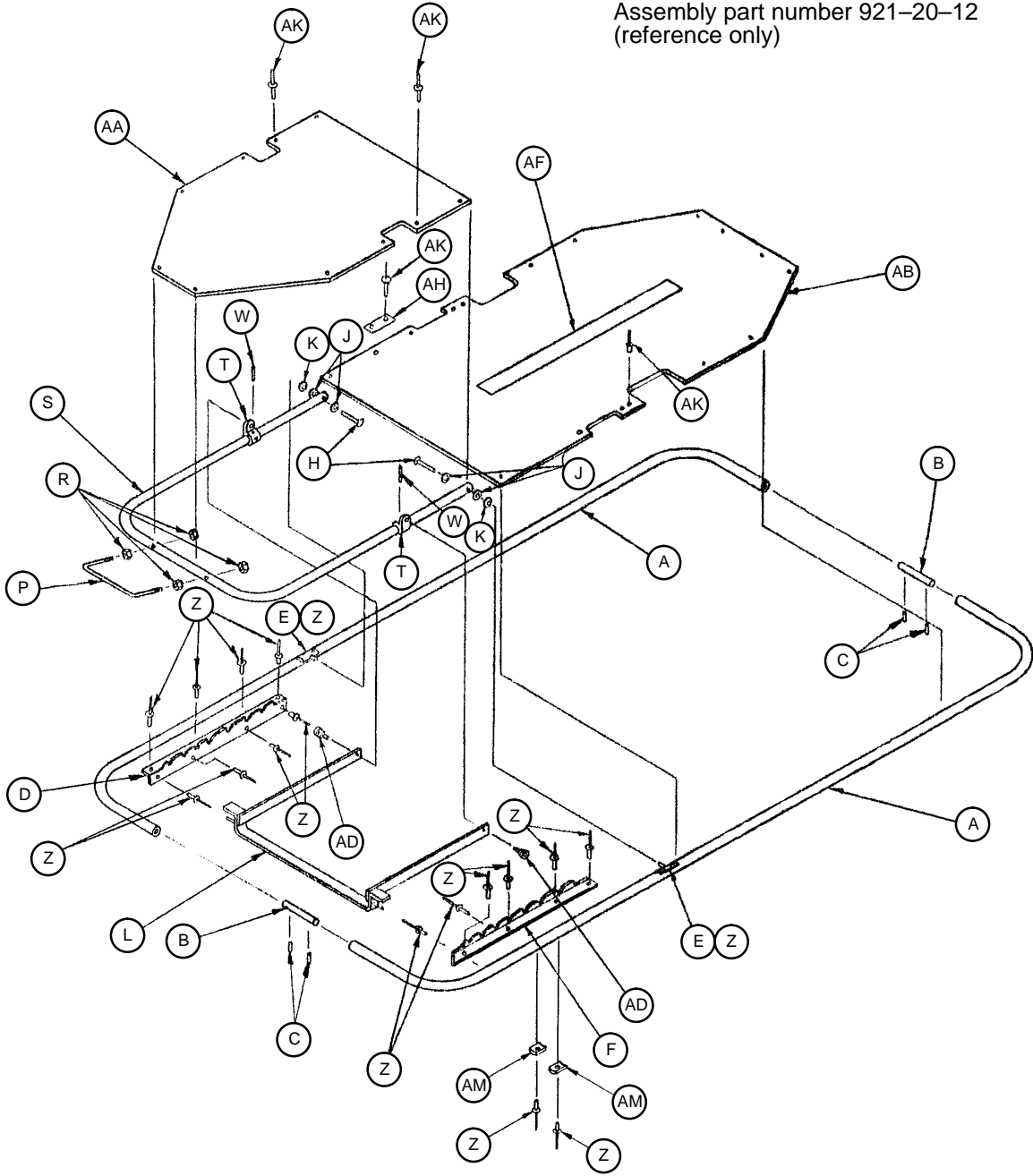
Assembly part number 392-34-3  
(reference only)



Item	Part No.	Part Name	Qty.
A	392-34-9	Gam. Carrier Hd. End Ass'y	1
B	392-34-2	Gam. Carrier Ft. End Ass'y	1
C	390-3-44	Connector Pin	2
D	391-34-25	Gam. Angle Tube Ass'y, Hd.	2
E	940-2-155	Support Tube Swivel Ass'y	2
H	42-7	Collar Assembly	4
J	399-9-13	Top Support Tube Ass'y	2
K	46-1	Square Hd. Screw	2
N	37-2	Hole Plug	4
P	21-75	Set Screw	2
R	16-5	Conelock Nut	8
S	460-4-40	Formed Plate Washer	16
T	3-5	Hex Hd. Cap Screw	8

# Litter Assembly

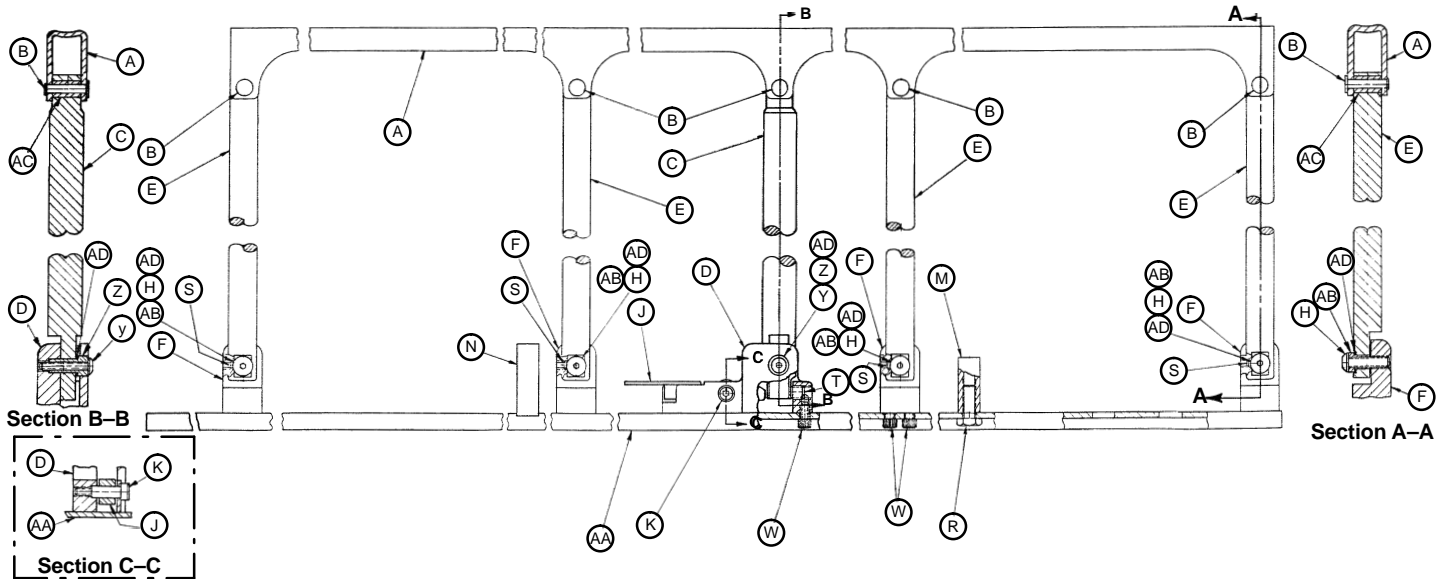
Assembly part number 921-20-12  
(reference only)



Item	Part No.	Part Name	Qty.	Item	Part No.	Part Name	Qty.
A	390-24-7	Litter Frame Tube	4	S	921-20-54	Fowler Frame	1
B	381-24-6	Connector Pin	2	T	940-2-134	Hinge Bracket, Mach.	2
C	26-12	Roll Pin	4	W	26-57	Roll Pin	2
D	381-20-3	Position Brkt. Ass'y, Lt.	1	Z	25-55	Pop Rivet	28
E	378-24-15	Pivot Plate Assembly	2	AA	921-20-75	Head End Top	1
F	381-20-4	Position Brkt. Ass'y, Rt.	1	AB	921-20-70	Foot End Top	1
H	25-17	Semi-Tubular Rivet	2	AD	8-13	Shoulder Bolt	2
J	14-4	Nylon Washer	4	AF	381-24-7	Velcro Pile	1
K	28-28	Retaining Ring	2	AH	381-24-5	Label	1
L	381-24-2	Fowler Lock Ass'y	1	AK	25-69	Pop Rivet	29
P	460-4-39	Posterior Handle	1	AM	378-24-42	Formed Washer	4
R	15-12	Hex Nut	4				

# Folddown Siderail Assembly, Left

Assembly part number 940-32-1 (reference only)

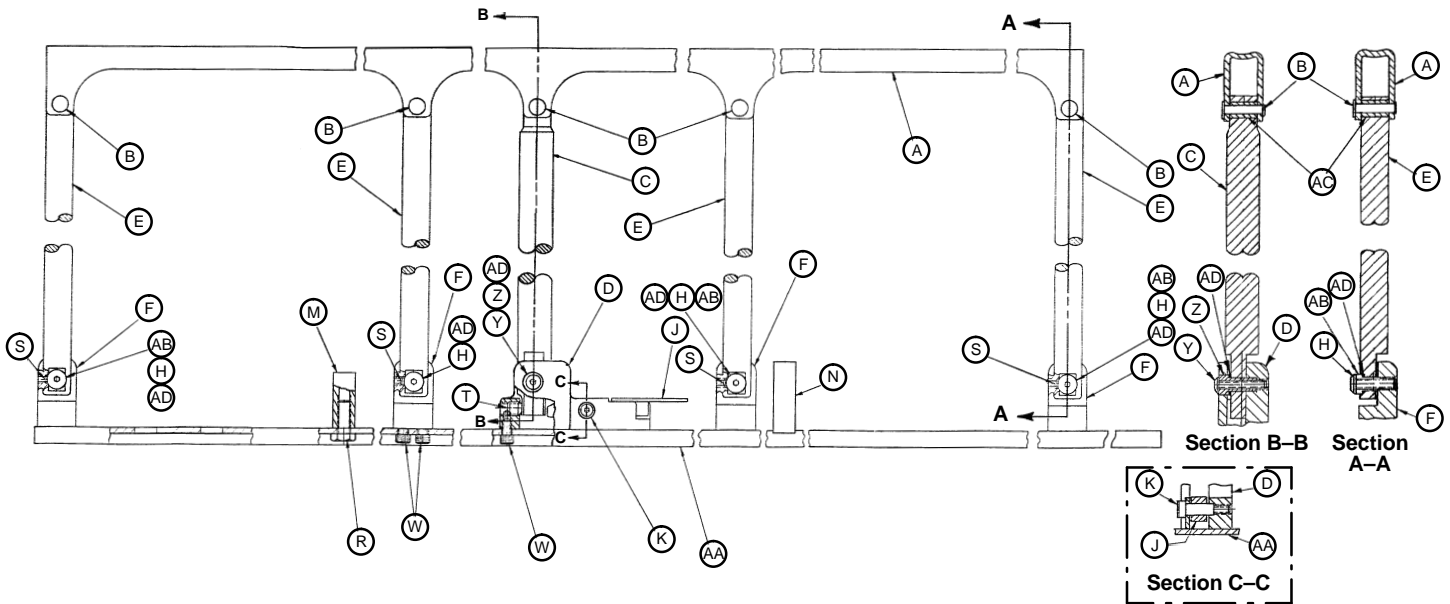


Item	Part No.	Part Name	Qty.
A	940-2-57	Top Rail	1
B	25-61	Rivet	5
C	399-31-29	Vertical Lock Bar	1
D	399-31-25	Latch Hinge, Left	1
E	399-31-11	Vertical Bar	4
F	399-31-8	Hinge	4
H	4-46	Hex Soc. But. Hd. Cap Screw	4
J	399-31-27	Latch, Left	1
K	8-20	Hex Soc. Hd. Shoulder Bolt	1
M	399-31-35	Siderail Stop, Short	1
N	399-31-34	Siderail Stop, Long	1
P	11-123	Flat Washer	A/R
R	3-2	Hex Hd. Cap Screw	2
S	21-50	Set Screw	4
T	21-23	Set Screw	1
W	4-29	Soc. Hd. Cap Screw	11
Y	4-45	Hex Soc. But. Hd. Cap Screw	1
Z	399-31-30	Lock Bar Pivot Bushing	1
AA	940-32-3	Bottom Rail	1
AB	399-31-31	Vert. Bar Pivot Bushing	4
AC	399-31-16	Sleeve Bearing	5
AD	11-55	Shim Washer	A/R

Siderail spindle update kit part number 399-31-150

# Folddown Siderail Assembly, Right

Assembly part number 940-32-2 (reference only)

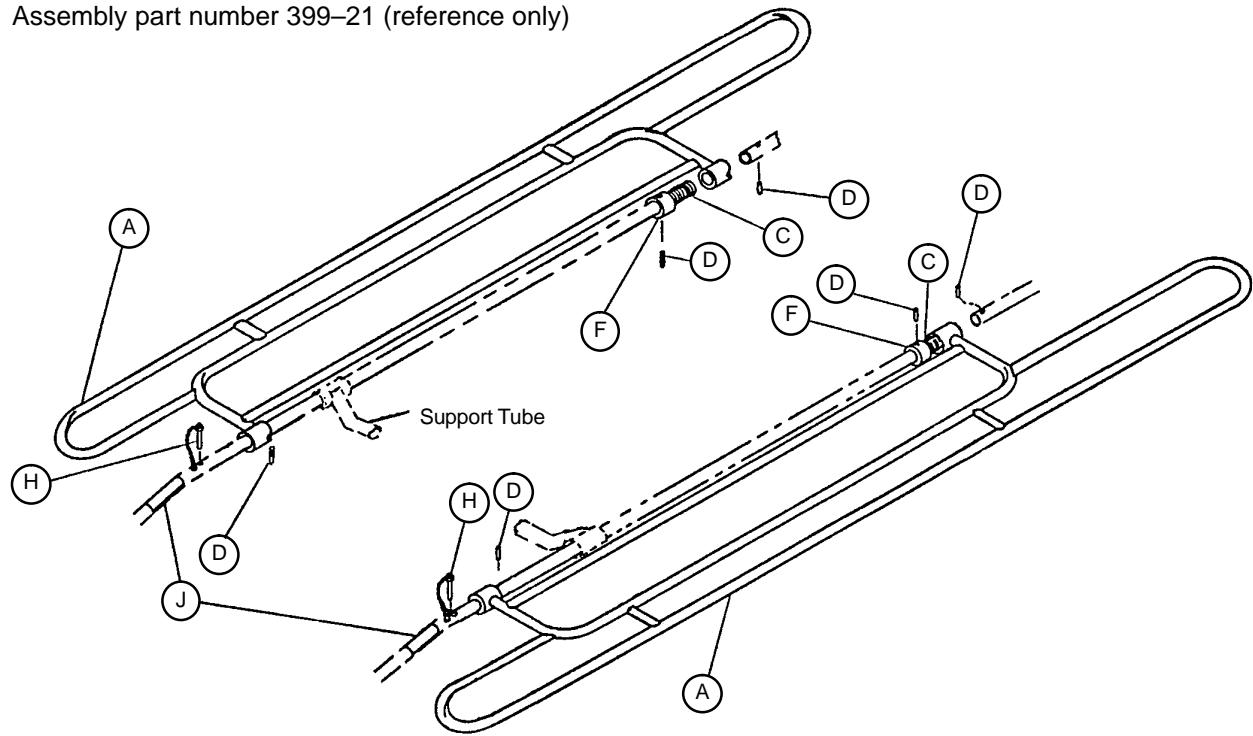


Item	Part No.	Part Name	Qty.
A	940-2-57	Top Rail	1
B	25-61	Rivet	5
C	399-31-29	Vertical Lock Bar	1
D	399-31-26	Latch Hinge, Right	1
E	399-31-11	Vertical Bar	4
F	399-31-8	Hinge	4
H	4-46	Hex Soc. But. Hd. Cap Screw	4
J	399-31-28	Latch, Right	1
K	8-20	Hex Soc. Hd. Shoulder Bolt	1
M	399-31-35	Siderail Stop, Short	1
N	399-31-34	Siderail Stop, Long	1
P	11-123	Flat Washer	A/R
R	3-2	Hex Hd. Cap Screw	2
S	21-50	Set Screw	4
T	21-23	Set Screw	1
W	4-29	Soc. Hd. Cap Screw	11
Y	4-45	Hex Soc. But. Hd. Cap Screw	1
Z	399-31-30	Lock Bar Pivot Bushing	1
AA	940-32-3	Bottom Rail	1
AB	399-31-31	Vert. Bar Pivot Bushing	4
AC	399-31-16	Sleeve Bearing	5
AD	11-55	Shim Washer	A/R

Siderail spindle update kit part number 399-31-150

# Swing Siderail Assembly

Assembly part number 399-21 (reference only)



Item	Part No.	Part Name	Qty.
A	399-21-1	Siderail Assembly	2
C	390-3-33	Compression Spring	2
D	26-14	Roll Pin	6
F	350-2-24	Collar	2
H	390-3-50	Threadless Pin Ass'y	2
J	399-17-1	Caution Label	2



# Warranty

---

## Limited Warranty:

Stryker Medical Division, a division of Stryker Corporation, warrants to the original purchaser that its products should be free from defects in material and workmanship for a period of one (1) year after date of delivery. Stryker's obligation under this warranty is expressly limited to supplying replacement parts and labor for, or replacing, at its option, any product which is, in the sole discretion of Stryker, found to be defective. Stryker warrants to the original purchaser that the frame and welds on its beds will be free from structural defects for as long as the original purchaser owns the bed. If requested by Stryker, products or parts for which a warranty claim is made shall be returned prepaid to Stryker's factory. Any improper use or any alteration or repair by others in such manner as in Stryker's judgement affects the product materially and adversely shall void this warranty. No employee or representative of Stryker is authorized to change this warranty in any way.

This statement constitutes Stryker's entire warranty with respect to the aforesaid equipment. STRYKER MAKES NO OTHER WARRANTY OR REPRESENTATION, EITHER EXPRESSED OR IMPLIED, EXCEPT AS SET FORTH HEREIN. THERE IS NO WARRANTY OF MERCHANTABILITY AND THERE ARE NO WARRANTIES OF FITNESS FOR ANY PARTICULAR PURPOSE. IN NO EVENT SHALL STRYKER BE LIABLE HEREUNDER FOR INCIDENTAL OR CONSEQUENTIAL DAMAGES ARISING FROM OR IN ANY MANNER RELATED TO SALES OR USE OF ANY SUCH EQUIPMENT.

## To Obtain Parts and Service:

Stryker products are supported by a nationwide network of dedicated Stryker Field Service Representatives. These representatives are factory trained, available locally, and carry a substantial spare parts inventory to minimize repair time. Simply call your local representative, or call Stryker Customer Service at (800) 327-0770.

## Supplemental Warranty Coverage:

Stryker has developed a comprehensive program of extended warranty options designed to keep your equipment operating at peak performance at the same time it eliminates unexpected costs. We recommend that these programs be activated *before* the expiration of the new product warranty to eliminate the potential of additional equipment upgrade charges. Stryker offers the following Supplemental Warranties:

### **Extended (Parts and Labor)**

- All replacement parts (excluding mattresses and consumable items)
- Labor and travel for *all* scheduled and unscheduled calls
- Annual Preventive Maintenance Inspections and repairs
- JCAHO paperwork for preventive maintenance
- Priority Emergency Service

### **Standard (Labor Only):**

- Labor and travel for *all* scheduled and unscheduled calls
- Annual Preventive Maintenance Inspections and repairs
- JCAHO paperwork for preventive maintenance
- Priority Emergency Service

### **Basic (Parts Only):**

- All replacement parts (excluding mattresses and consumable items)
- Priority Emergency Service

**Please call your local representative, or call (800) 327-0770 for further information**

# Warranty

---

## **Return Authorization:**

Merchandise cannot be returned without approval from the Stryker Customer Service Department. An authorization number will be provided which must be printed on the returned merchandise. Stryker reserves the right to charge shipping and restocking fees on returned items.

SPECIAL, MODIFIED, OR DISCONTINUED ITEMS NOT SUBJECT TO RETURN.

## **Damaged Merchandise:**

ICC Regulations require that claims for damaged merchandise must be made with the carrier within fifteen (15) days of receipt of merchandise. **DO NOT ACCEPT DAMAGED SHIPMENTS UNLESS SUCH DAMAGE IS NOTED ON THE DELIVERY RECEIPT AT THE TIME OF RECEIPT.** Upon prompt notification, Stryker will file a freight claim with the appropriate carrier for damages incurred. Claim will be limited in amount to the actual replacement cost. In the event that this information is not received by Stryker within the fifteen (15) day period following the delivery of the merchandise, or the damage was not noted on the delivery receipt at the time of receipt, the customer will be responsible for payment of the original invoice in full.

Claims for any short shipment must be made within thirty (30) days of invoice.

---

**stryker<sup>®</sup>**  
**Medical**

6300 Sprinkle Road, Kalamazoo, MI 49001-9799

(800) 327-0770

---

DH 5/93 974-1-192 REV A