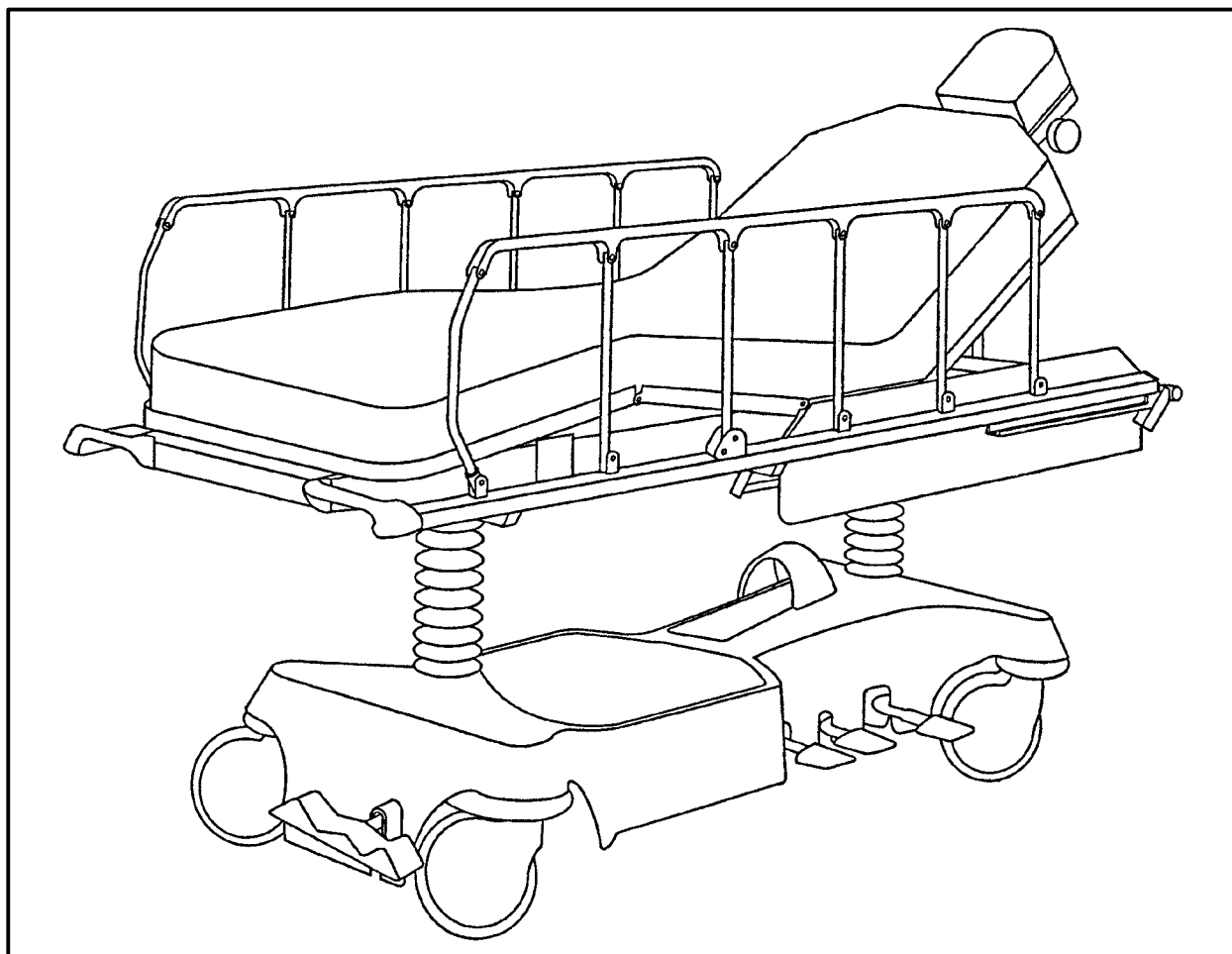

IMPORTANT
File in your
maintenance
records

stryker[®]
Medical



Renaissance Series

1066 Head/Neck Surgery Bed

MAINTENANCE MANUAL

For Parts or Technical Assistance
1-800-327-0770

Table of Contents

INTRODUCTION	3
SPECIFICATIONS	3
WARNING / CAUTION / NOTE DEFINITION	3
PREVENTATIVE MAINTENANCE	4
SIDERAIL LATCH ADJUSTMENT	5
TRANSFER BOARD COUNTERBALANCE ADJUSTMENT	5
PEDAL LINKAGE ADJUSTMENT – DUAL SIDE CONTROL BASE	6
PEDAL LINKAGE ADJUSTMENT – DUAL END CONTROL BASE	7
CASTER ASSEMBLY REPLACEMENT	8
HYDRAULIC SYSTEM TROUBLESHOOTING	9
CHECKING HYDRAULIC FLUID LEVEL	10
REMOVING EXCESS AIR FROM THE HYDRAULIC SYSTEM	10
JACK DESCENT RATE ADJUSTMENT	11
HYDRAULIC CHECK VALVE REPLACEMENT	
Replacement Of Valve #1	12
Replacement Of Valve #2	13
Replacement Of Valve #3	13
BRAKE ADJUSTMENT	14
BASE LUBRICATION POINTS	14
ASSEMBLY DRAWINGS AND PARTS LISTS	
Side Control Base Assembly (with Wheels)	16, 17
Brake Adjuster Assembly	18
Brake Cam Assembly	19
Brake Pedal Assembly, Side Control Base	20
Steering Caster Assembly	21
Caster and Cover Assembly	22
Fifth Wheel Assembly	23
End Control Base Assembly (with Wheels)	24, 25
End Control Brake Pedal Assembly, Foot	26
End Control Brake Pedal Assembly, Head	27
Side Control Base Assembly (with Jacks)	28, 29
Pedal Base Assembly, Pump	30
Pedal Base Assembly, Head End, Left	31
Pedal Base Assembly, Head End, Right	32
Side Control Hood Assembly	33
End Control Base Assembly (with Jacks)	34, 35
Pump Pedal Assembly, Head	36
Pump Pedal Assembly, Foot	36
End Control Base Hood Assembly	37
Jack Assembly	38
Jack Base Assembly	39
Base Labeling Assembly	40
Litter Assembly	41–43
Jack Support and Trend. Limiter Assembly	44
Trend. Limiter Assembly	45
Transfer System Assembly, Left	46
Transfer System Assembly, Right	47
Board Support Assembly	48
Crank Fowler Assembly	49
Crank Fowler Subassembly	50, 51
Fowler Crankscrew Assembly	52
Knee Gatch Assembly	53
Knee Gatch Preassemblies	54

Table of Contents

ASSEMBLY DRAWINGS AND PARTS LISTS (CONTINUED)

- Knee Gatch Crankscrew Assembly 55
- Footsection Assembly 56
- Handle Assembly 57
- Wrist Rest Assembly 58
- Upright Assembly 59
- Knob Assembly 60
- Poat–Op Head Addition Assembly 61
- Inflatable Air System Head Pad 62
- Sheet Support Assembly 63
- Siderail Assembly 64
- Drainage Pan Assembly 65
- Permanent I.V. Pole Assembly) 66
- Permanent I.V. to Frame Assembly 67
- Replacement I.V. Pole 68
- Foot Board/Chartholder Assembly 69
- Oxygen Bottle Holder Assembly 69
- Defibrillator Tray Assembly 70
- Foot Extension/Defibrillator Tray Assembly 71

Warranty

- Obtaining Parts and Service 72
- Supplemental Warranty Coverage 72
- Return Authorization 73
- Freight Damage Claims 73

Introduction

INTRODUCTION

This manual is designed to assist you with the operation and maintenance of the 1066 Head/Neck Surgery Bed. Read it thoroughly before using the equipment or beginning any maintenance on it.

SPECIFICATIONS

Maximum Weight Capacity	500 pounds
Overall Bed Length/Width	88", 31.5"
Minimum/Maximum Bed Height	22.5"/36"
Fowler Angle	0 to 90 degrees
Knee Gatch Angle	0 to 35 degrees
Trendelenburg/Reverse Trendelenburg	-15 degrees t +17 degrees

WARNING / CAUTION / NOTE DEFINITION

The words WARNING, CAUTION and NOTE carry special meanings and should be carefully reviewed.

WARNING

The personal safety of the patient or user may be involved. Disregarding this information could result in injury to the patient or user.

CAUTION

These instructions point out special procedures or precautions that must be followed to avoid damaging the equipment.

NOTE

This provides special information to make maintenance easier or important instructions clearer.

Preventative Maintenance

CLEANING

1. Hand wash all surfaces of the bed with warm water and mild detergent. Dry thoroughly.
2. Clean Velcro **AFTER EACH USE**. Saturate Velcro with disinfectant and allow disinfectant to evaporate. (Appropriate disinfectant for nylon Velcro should be determined by the hospital.)

BIANNUAL CHECKLIST

- _____ All fasteners and knobs secure (reference all assembly prints)
- _____ Siderails move and latch properly (page 5)
- _____ All casters lock with brake pedal engaged (page 14)
- _____ Steer function working properly
- _____ All casters secure and swivel properly
- _____ Body restraints working properly
- _____ I.V. pole intact and operating properly (page 66–68)
- _____ Oxygen bottle holder intact and operating properly (page 33, 37 or 69)
- _____ Fowler operates and latches properly
- _____ Knee Gatch operates properly (page 53)
- _____ Trendelenberg/Reverse Trendelenberg operating properly
- _____ No rips or cracks in mattress cover
- _____ Transfer boards intact and operating properly (page 5)
- _____ Arm board support levers intact and operating properly (page 48)
- _____ Ground chain intact
- _____ No leaks at hydraulic connections
- _____ Hydraulic jacks holding properly (page 9)
- _____ Hydraulic drop rate set properly (page 11)
- _____ Hydraulic oil level sufficient (page 10)
- _____ Lubricate where required, including the brake adjuster assembly and brake cam (page 14)

Serial No. _____

Completed By: _____

Date: _____

Service Information

SIDERAIL LATCH ADJUSTMENT

Required Tools:

1/8 Hex Allen Wrench

WARNING

The siderail latch adjustment is pre-set at the factory, and there should not normally be a need for readjustment. If adjustment must be done it is important to follow the procedure below. If it is not done properly, injury to the patient or user could occur.

Adjustment Procedure:

1. Using a 1/8 hex Allen wrench, adjust the hex Allen screw located on the latch assembly opposite the latch. Turning the Allen screw clockwise will **DECREASE** the amount of "play" in the latching mechanism. Turning counterclockwise will **INCREASE** the amount.

NOTE

The amount of "play" in the siderail, when in full up engaged position, should be approximately 1/8 to 3/16 inches.

CAUTION

Too much "play" when the siderail is in the full up engaged position will give the siderail the appearance of being unstable and could also cause premature wearing of the latch system.

Too little "play" will obstruct the latch and keep it from engaging completely in the full up position, which may cause damage to the latch and/or injury to the patient or user.

TRANSFER BOARD COUNTERBALANCE ADJUSTMENT

Required Tools:

7/16 Open End Wrench

Adjustment Procedure:

1. Raise the transfer board to the full up position.
2. Unhook the extension spring at the eye bolt.
3. Using a 7/16 open end wrench, loosen the jam nut at the eye bolt.
4. Adjust the eye bolt to the desired position.
5. Tighten the jam nut.
6. Hook the extension spring to the eye bolt.
7. Allow the transfer board to lower on its own.
8. Repeat steps 1–7 until the desired counterbalance is achieved.

Service Information

PEDAL LINKAGE ADJUSTMENT – DUAL SIDE CONTROL BASE

Required Tools:

3/32 Hex Allen Wrench

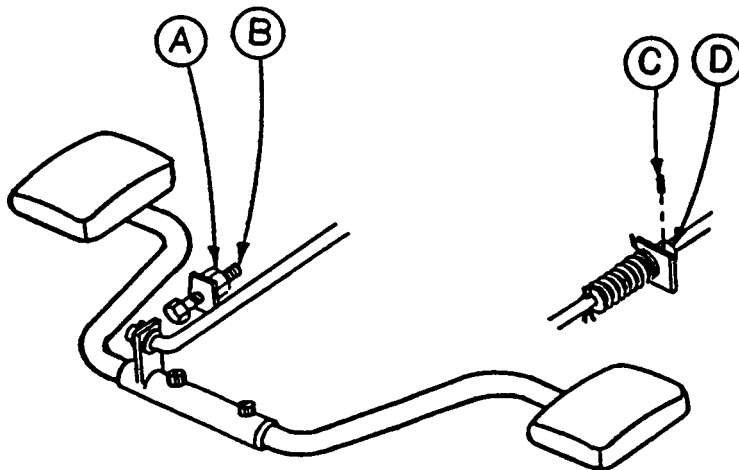
7/16 Open End Wrench

1/2 Open End Wrench

(2) Wooden blocks (10 – 12 inches in length)

Adjustment Procedure:

1. Pump the litter up to full height.
2. Lift the base hood, separating the hood from the base frame. Using the wooden blocks, support the base hood.
3. To adjust the foot end descent pedal, use a 5/32 hex Allen wrench to loosen the set screw (C) in the stop collar (D) on the release rod. Hold the pedal parallel to the floor and slide the collar up to the bracket on the release rod. Tighten the set screw on the stop collar. Be sure the head end and foot end descent pedals are level with each other. Repeat for the head end pedal, if necessary.
4. Once the pedals are level, be sure the paddle on the end of the release rod for the foot end jack is slightly touching the actuating stem on the jack base. If it is not, use a 3/32 hex Allen wrench to loosen the set screw on the paddle hub. Adjust the paddle to **JUST** touch the stem of the jack. Tighten the set screw in the paddle hub. Repeat for the head end jack, if necessary.
5. Depress the pedal for the foot end jack. The jack should start to descend about the same time the paddle on the end of the rod contacts the sleeve on the jack actuating stem. The bracket on the foot pedal body should hit the stop screw (B). Any further movement could cause damage to the stem components inside the jack housing. To adjust the stop screw, use a 1/2 open end wrench to loosen the hex jam nut (A). Turn the screw and re-tighten the hex jam nut. Repeat for the head end jack.
6. Pump the litter up to full height.
7. Step on both descent pedals at the same time. Both ends of the litter should lower with the foot end lowering slightly faster than the head end. If it does not, refer to the procedure for adjusting the jack descent rate.
8. Remove the wooden blocks supporting the base hood. Use the pedal cut-outs on the side of the hood as a guide for proper re-positioning.



Service Information

PEDAL LINKAGE ADJUSTMENT – DUAL END CONTROL BASE

Required Tools:

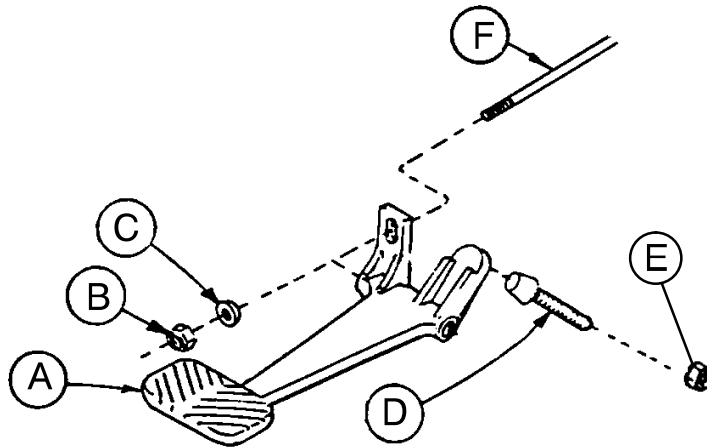
7/16 Open End Wrench

1/2 Open End Wrench

(2) Wooden Blocks (10 – 12 inches in length)

Adjustment Procedure:

1. Pump the litter up to full height.
2. Lift the base hood, separating the hood from the base frame. Using the wooden blocks, support the base hood.
3. The descent pedals should be level with each other and there should be approximately 4 inches between the floor and the bottom of the pedal. To raise the pedal height, use a 1/2 open end wrench to loosen the hex jam nut (E). Using your hand, turn the screw (D) into the bracket. To lower the pedal height, loosen the screw. Tighten the hex jam nut (E) after the correct height is achieved.
4. Once the pedals are level, the release rod can be adjusted. Using a 7/16 wrench, turn nut (B) clockwise to shorten the release length and counterclockwise to increase the length.
5. Depress the pedal and be sure the jack descent is triggered when the pedal is approximately one inch from the floor. The descent should stop when the pedal is released and the jack height should hold. Repeat the above procedures for the descent pedal at the other end of the bed.
6. After adjusting each descent pedal individually, depress both pedals at the same time. Both jacks should start descending when the pedals are approximately one inch from the floor. The foot end should lower slightly faster than the head end. If it does not, see procedure for adjusting the jack descent rate.
7. Remove the wooden blocks supporting the base hood and secure the hood to the base frame.



Service Information

CASTER ASSEMBLY REPLACEMENT*

Required Tools:

1/8 Roll Pin Punch

Flat Punch (any size larger than 1/8)

Needle Nose Pliers

3/4 Inch Wrench

1 Inch Wrench

Drill with 1/8 inch Drill Bit

Hammer

Floor Jack

(2) Wooden Blocks (10 – 12 inches in length)

Torque Wrench (w/ Ft. Lbs. Adjust.)

Replacement Procedure:

1. Pump the litter up to full height.
2. Lift the base hood, separating the hood from the base frame. Using the wooden blocks, support the base hood.
3. Using a 1/8 roll pin punch and hammer, remove roll pin located in center of lug nut holding wheel assembly to base frame.
4. Carefully remove plastic wheel covers.
5. Using a floor jack, lift base frame approximately 4 inches off the ground.
6. While holding cap screw with a 3/4 inch wrench, turn lug nut with a 1 inch wrench to loosen wheel assembly from base frame. Remove wheel.
7. Install the new wheel assembly with new lug nut and tighten down to 60 – 65 foot-pounds torque.

WARNING

Never reuse the old lug nut, cap screw or roll pin once removed from base frame.

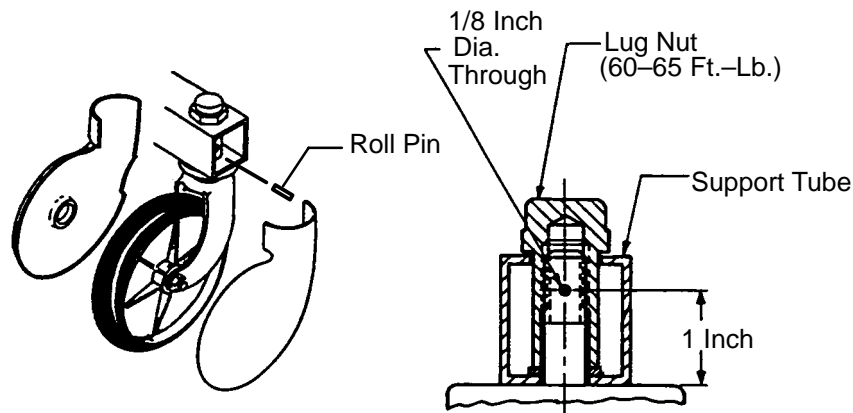
8. Lower the floor jack and set aside to be used, if needed, with another wheel.
9. Drill a 1/8 hole in center of lug nut, going completely through the lug nut.

CAUTION

Be careful not to "oblong" the hole in the lug nut when drilling.

10. Using needle nose pliers, hold on to roll pin and tap into place. Finish driving roll pin with a flat head punch and a hammer until flush with the lug nut.
11. Install plastic wheel covers onto wheel.
12. Remove the wooden blocks supporting the base hood and secure the hood to the base frame.

*Replacement Part Number 715-100-127 (Caster and Cover Assembly)



Service Information

HYDRAULIC SYSTEM TROUBLESHOOTING

NOTE

Be sure the pedal linkage has been adjusted properly before beginning service on the jacks (see page 6 or page 7).

PROBLEM/SYMPTOM	SOLUTION
Jack will not raise to full height.	Add hydraulic fluid (see p.10). Check for leaks.
Jack will not hold in raised position.	Close the needle valve completely. If the jack holds, replace valve #1 (see p. 14). If the jack does not hold, replace valve #2 (see p. 15).
Jack will not pump up and the jack actuator rod does not move.	Close the needle valve. If the jack will now pump up, replace valve #1. If the jack still will not pump up after closing the needle valve, replace valve #3 (see p. 15).
Jack will not pump up but the jack actuator rod does move when the pump pedal is activated.	Replace valve #2 (see p. 15).
Jack will not pump up and the jack actuator rod may or may not move.	Remove excess air (vacuum) in system (see p. 10).

Contact Stryker technical service at 1-800-327-0770 for further assistance.

Service Information

CHECKING HYDRAULIC FLUID LEVEL

Required Tools:

3/8 Open End Wrench

3/4 Open End Wrench

Procedure:

WARNING

To avoid personal injury or damage to the stretcher, remove the litter and the base hood before beginning service on the jacks.

1. Using a 3/8 open end wrench, remove square head set screws from both head and foot end jack support tubes. Remove litter top and set aside.
 2. Lift base hood off base frame and set aside.
 3. Be sure there are no hydraulic leaks. If there are, jack replacement will be necessary.
 4. Lower the jack to the full down position.
 5. Using a 3/4 open end wrench, slowly turn the fill plug located on the side of the reservoir counterclockwise to allow excess system pressure to vent. Remove the fill plug.
 6. The hydraulic fluid should be visible at the bottom of the fill hole. If it is not, add Mobil Aero HFA hydraulic fluid (Stryker part number 2020-70-475) until the fluid is visible at the bottom of the fill hole. Replace the fill plug.
-

CAUTION

Use of other types of oil may damage hydraulic units.

7. Replace the hood and the litter.

REMOVAL OF EXCESS AIR (VACUUM) FROM THE HYDRAULIC SYSTEM

Procedure:

1. Verify all hydraulic linkages are secure and operating properly (see pedal linkage adjustment procedure page 6 or 7).
2. Using pump pedal, actuate system several times. This will force the air through the system and the jack should now pump up.

Service Information

JACK DESCENT RATE ADJUSTMENT

Required Tools:

Screwdriver

(2) Wooden Blocks (10 – 12 inches in length)

Adjustment Procedure:

1. Pump the litter up to full height.
2. Lift the base hood, separating the hood from the base frame. Using the wooden blocks, support the base hood.
3. The descent rate needle valve is located on the base of the jack. Turning the needle valve clockwise, with a screwdriver, will decrease the rate of descent. Turning it counterclockwise will increase the rate of descent.
4. Adjust the needle valve so that the foot end of the stretcher descends slightly faster than the head end.

NOTE

The larger percentage of a patient's weight is located in the torso area. Adjust descent rate accordingly.

5. Remove the wooden blocks supporting the base hood and secure the hood to the base frame.

NOTE

The jack descent rate was preset at the factory to drop the foot end faster than the head. It is recommended that the foot drop faster to avoid patient disorientation.

Service Information

HYDRAULIC CHECK VALVE REPLACEMENT

Required Tools:

3/8 Open End Wrench
3/4 Open End Wrench
7/32 Hex Allen Wrench

Stiff Wire (with bent, pointed end)
Torque Wrench (with Ft. Lbs. adjust.)
1/2 Inch Diameter Rod

Small Needle Nose Pliers

Replacement of Valve #1

WARNING

To avoid personal injury or damage to the stretcher, remove the litter and the base hood before beginning service on the stretcher.

1. Using a 3/8 open end wrench, remove square head set screws from both head and foot end jack support tubes. Remove litter top and set aside.
2. Lift base hood off base frame and set aside.
3. Lower the jack to full down position. The actuator must be manually lowered while depressing the appropriate release pedal.
4. Remove the pin body assembly (4) with a 3/4 open end wrench and discard the housing gasket (5).

NOTE

Although the hydraulic fluid is not under pressure, some fluid loss will occur. The fluid loss should be minimal but covering the floor is advisable.

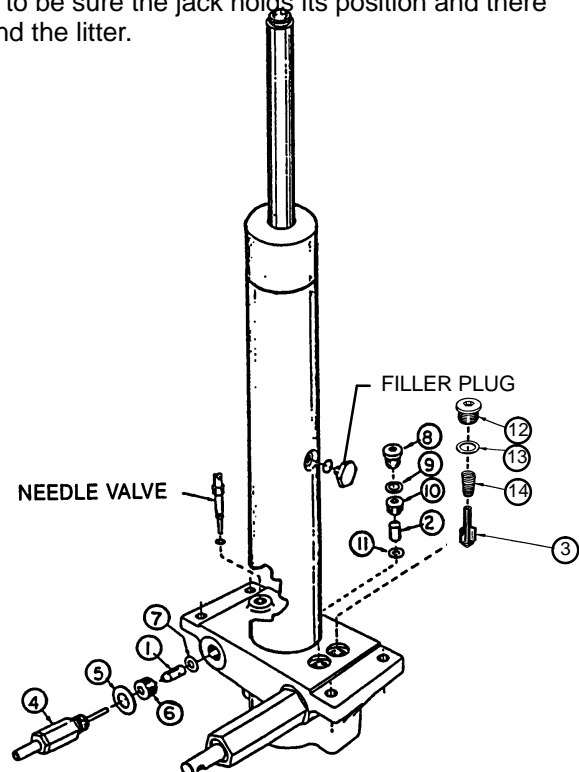
5. Using a 7/32 hex Allen wrench, remove the valve plug (6).
6. Using a stiff wire with a bent, pointed end, remove and discard the valve (1) and the seal (7).
7. Install the new seal (7) flat to the bottom of its hole with a 1/2 inch diameter rod and install the new valve (1) with the beveled end out (as shown in the illustration).
8. Install the valve plug (6) with the countersunk end first and the beveled end out. Tighten to 10 foot pounds torque.
9. Install the pin body assembly (4) with the new housing gasket (5) and tighten to 10 foot pounds torque.
10. Pump up the jack to the maximum height. Apply weight to be sure the jack holds its position and there are no hydraulic leaks before replacing the base hood and the litter.

ITEM	PART NO.	PART NAME
1	926-20-153	Check Valve
2	926-20-153	Check Valve
3	715-1-341	Poppet
4	715-100-312	Pin Housing Assembly*
	715-270-100	Valve Assembly**
5	715-1-330	Housing Gasket
6	715-1-309	Valve Plug
7	926-20-154	Seal
8	715-1-101	Base Plug
9	926-20-156	Seal
10	715-1-309	Valve Plug
11	926-20-154	Seal
12	715-1-301	Base Plug
13	926-20-156	Seal
14	390-2-134	Conical Comp. Spring

* Used on jack part number 715-100-310.

** Used on jack part number 715-270-10.

(see label on side of jack reservoir for jack part number)



Service Information

HYDRAULIC CHECK VALVE REPLACEMENT (CONT'D)

Replacement of Valve #2

WARNING

To avoid personal injury or damage to the stretcher, remove the litter and the base hood before beginning service on the jacks. Lower the jack rod completely to relieve the pressure on the pump piston side of the jack. This will prevent large hydraulic fluid loss and possible damage when the base plugs are removed.

1. Remove the base plug (8) and discard the seal (9).
2. Remove the valve plug (10).
3. Using a stiff wire with a bent, pointed end, remove the valve (2) and the seal (11) and discard the seal.
4. Install the new seal (11) flat to the bottom of its hole with a 1/2" diameter rod.
5. Install the new valve (2) with the beveled end out (as shown in the illustration).
6. Install the valve plug (10) and tighten to 10 foot-pounds torque.
7. Install the new seal (9) with the base plug (8) and tighten to 10 foot-pounds torque.
8. Pump up the jack to the maximum height.
9. Be sure there are no hydraulic leaks before replacing the base hood and the litter.

Replacement of Valve (Poppet) #3

WARNING

To avoid personal injury or damage to the stretcher, remove the litter and the base hood before beginning service on the jacks. Lower the jack rod completely to relieve the pressure on the pump piston side of the jack. This will prevent large hydraulic fluid loss and possible damage when the base plugs are removed.

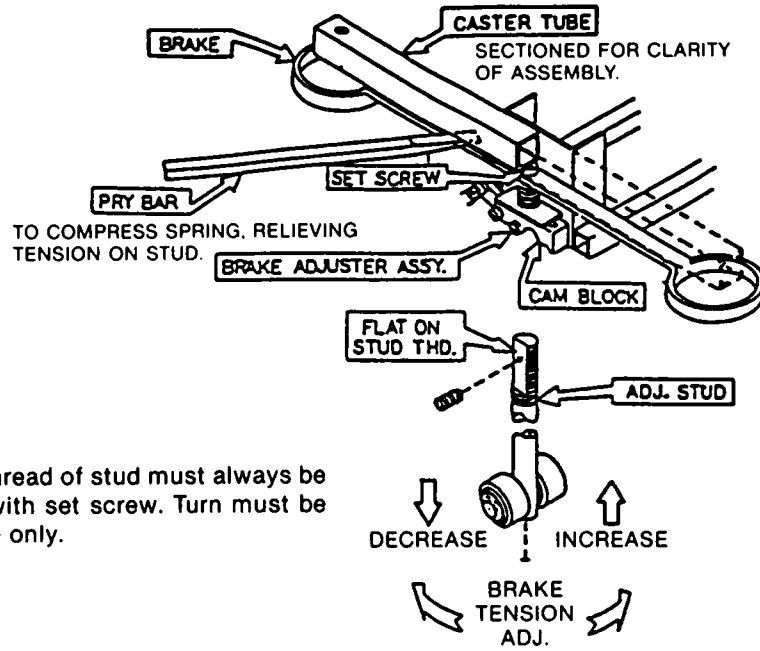
1. Remove the base plug (12) and discard the seal (13).
2. Remove the compression spring (14).
3. Using a small needle nose pliers, remove the poppet (3).
4. Install the new poppet (3).
5. Install the compression spring (14).
6. Install the new seal (13) and the base plug (12) and tighten to 10 foot-pounds torque.
7. Pump up the jack to the maximum height to check its operation.
8. Check for hydraulic leaks before replacing the base hood and the litter.

Service Information

BRAKE ADJUSTMENT

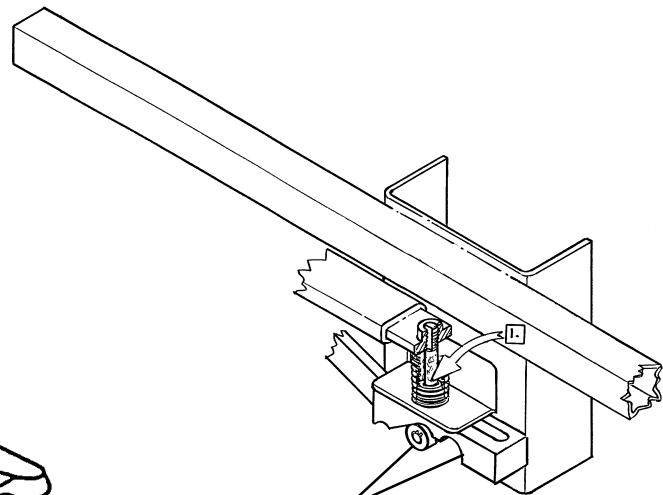
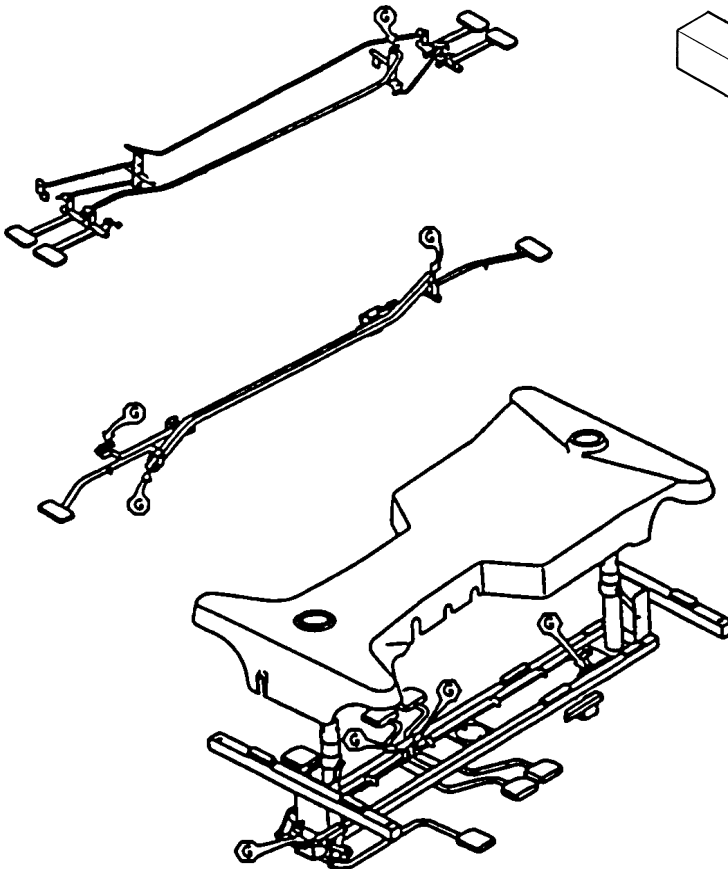
Required Tools:

- 3/32" Hex Allen Wrench
- Pry Bar
- Thread "Locktite"



Flat on thread of stud must always be aligned with set screw. Turn must be full circle only.

BASE LUBRICATION

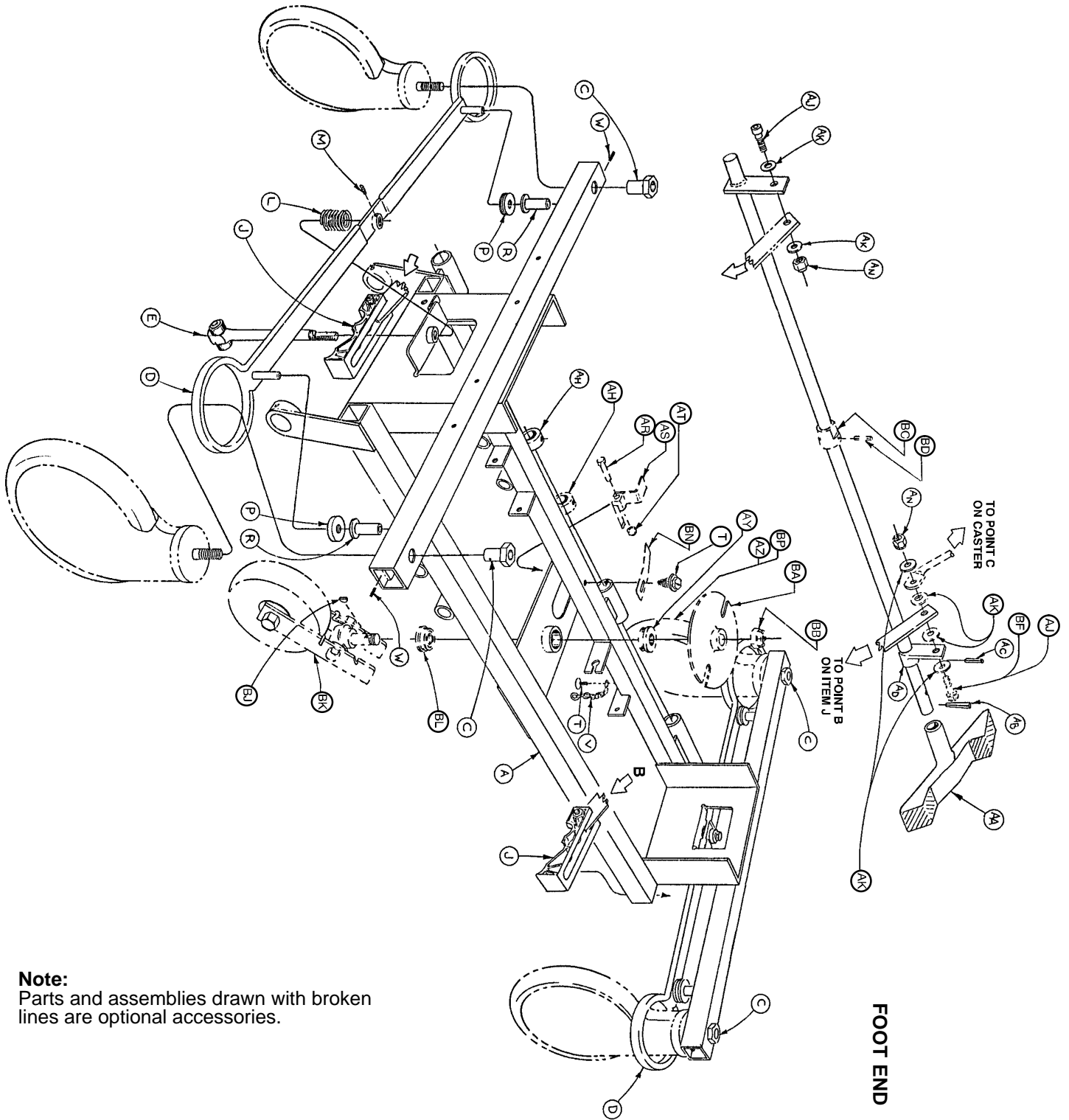


Do not grease area shown.

1. Lubricate brake adjuster rod around area shown with MPG-2 grease or equivalent.

Notes

1066-45-19 Side Control Base Assembly (with Wheels)



Note:
Parts and assemblies drawn with broken lines are optional accessories.

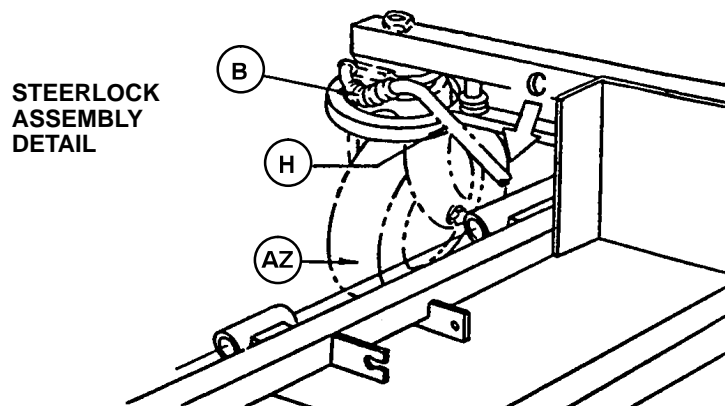
1066-45-19 Side Control Base Assembly (with Wheels)

Item	Part No.	Part Name	Qty.
A	715-1-245	Base Weldment Assembly	1
B	38-211	Spring	1
C	715-1-158	Caster Nut	4
D	715-1-61	Caster Brake Assembly	2
E	(Page 18)	Brake Adjuster Assembly	2
F	1066-1-34	Brake Rod Assembly	1
H	1000-10-62	Steering Lock Linkage Bar	1
J	(Page 19)	Brake Cam Assembly	2
L	715-1-94	Compression Spring	2
M	21-50	Set Screw	2
P	715-1-11	Brake Cushion	4
R	946-1-116	Brake Bar Bushing	4
T	23-25	Self-Tapping Screw	2
V	715-1-156	Grounding Chain	1
W	26-5	Roll Pin	4
AA	(Page 20)	Pedal Ass'y, Brake and Steer, Ft.	2
AB	26-261	Groove Pin	2
AC	26-13	Roll Pin	1
AD	715-1-165	Actuator Plate Assembly	1
AH	42-20	Collar w/ Set Screw	2
AJ	8-17	Soc. Hd. Cap Screw	2*
AK	14-2	Nylon Washer	4
AN	16-2	Fiberlock Nut	2
AR	3-20	Hex Hd. Cap Screw	1
AS	715-1-217	Fifth Wheel Latch	1
AT	16-16	Nylock Nut	1
AY	715-1-157	Fifth Wheel Bearing	1
AZ	(Page 21)	Steering Caster Assembly	1**
BA	715-1-337	Fifth Wheel Plate Assembly	1
BB	16-49	Flexlock Nut	1
BC	715-1-161	Fifth Wheel Cam	1
BD	26-8	Roll Pin	1
BF	8-21	Soc. Hd. Cap Screw	1**
BJ	715-1-149	Woodruff Key	1
BK	(Page 23)	Fifth Wheel Assembly	1
BL	81-219	Bearing	1
BN	715-1-136	Fifth Wheel Spring	1
BP	(Page 22)	Caster Wheel Assembly	3***

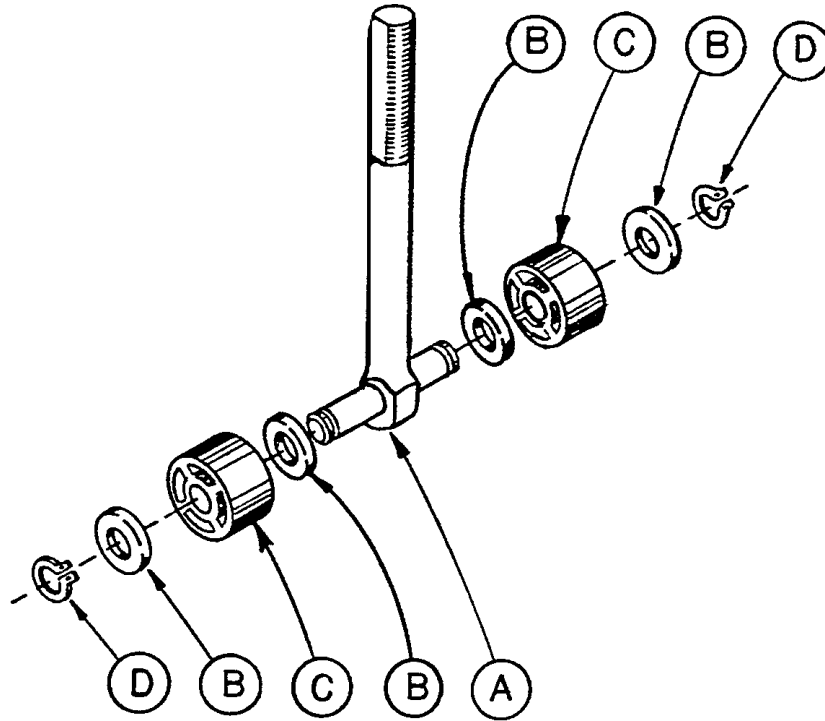
* Item AJ to be used only when fifth wheel is ordered.

**Items AZ and BF to be used only when steerlock caster is ordered.

*** Item BP quantity of four when fifth wheel is ordered.

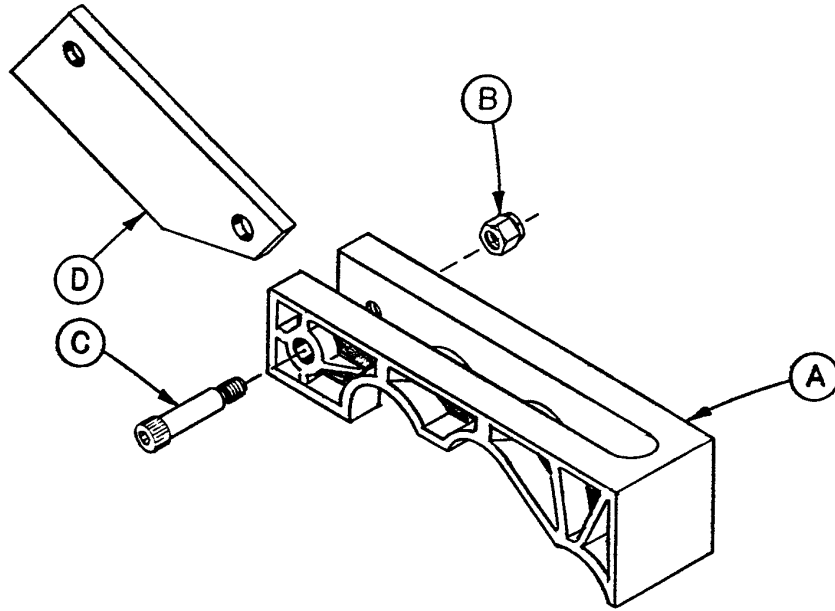


715-1-150 Brake Adjuster Assembly



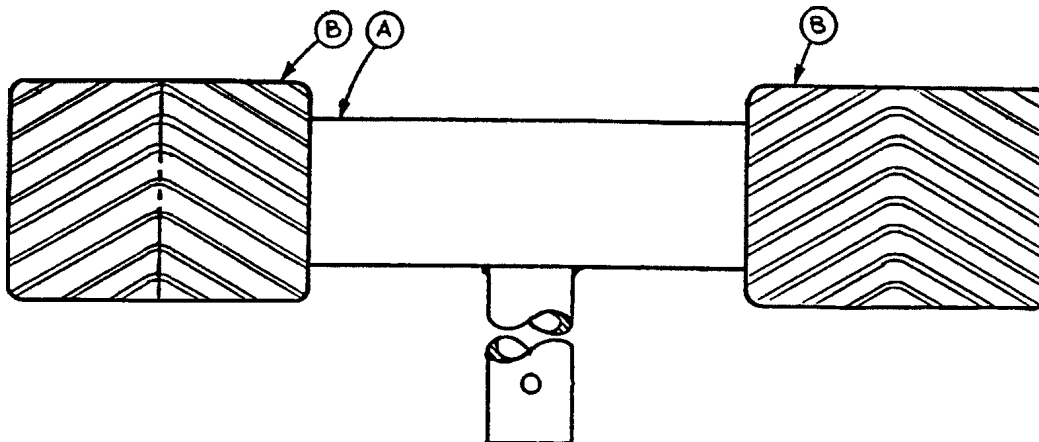
Item	Part No.	Part Name	Qty.
A	715-1-62	Threaded Stud Assembly	1
B	14-4	Nylon Washer	4
C	715-1-180	Bearing	2
D	28-8	Retaining Ring	2

715-1-213 Brake Cam Assembly



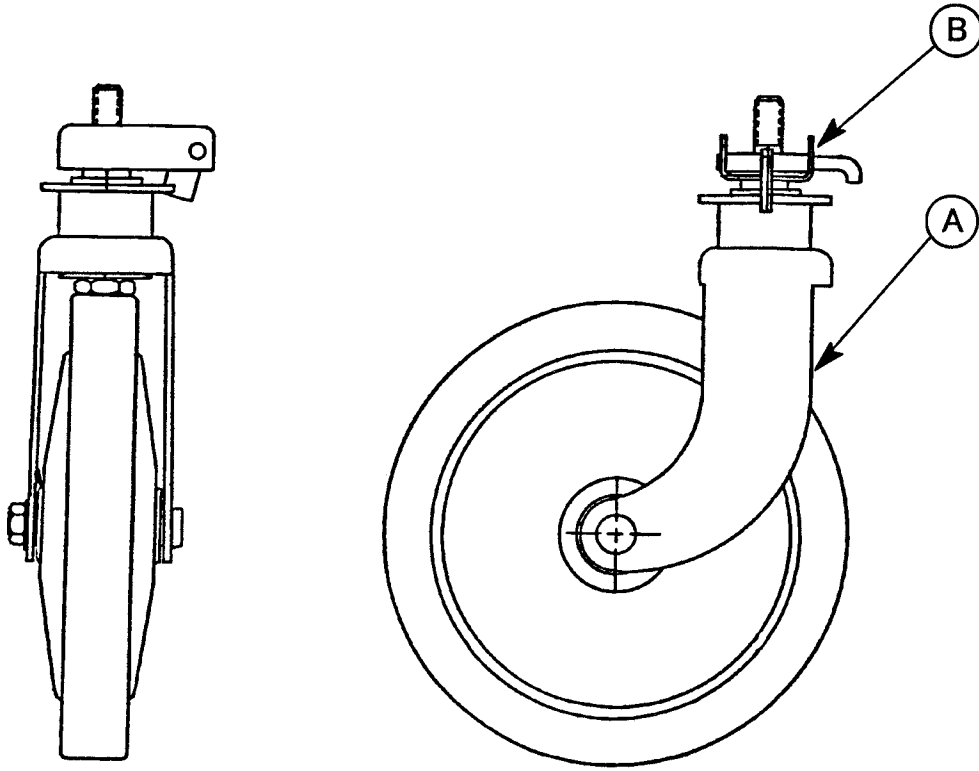
Item	Part No.	Part Name	Qty.
A	715-1-221	Brake Cam	1
B	16-59	Fiberlock Nut	1
C	8-21	Soc. Hd. Cap Screw	1
D	715-1-173	Brake Connecting Link	1

Brake Pedal Assembly, Side Control Base



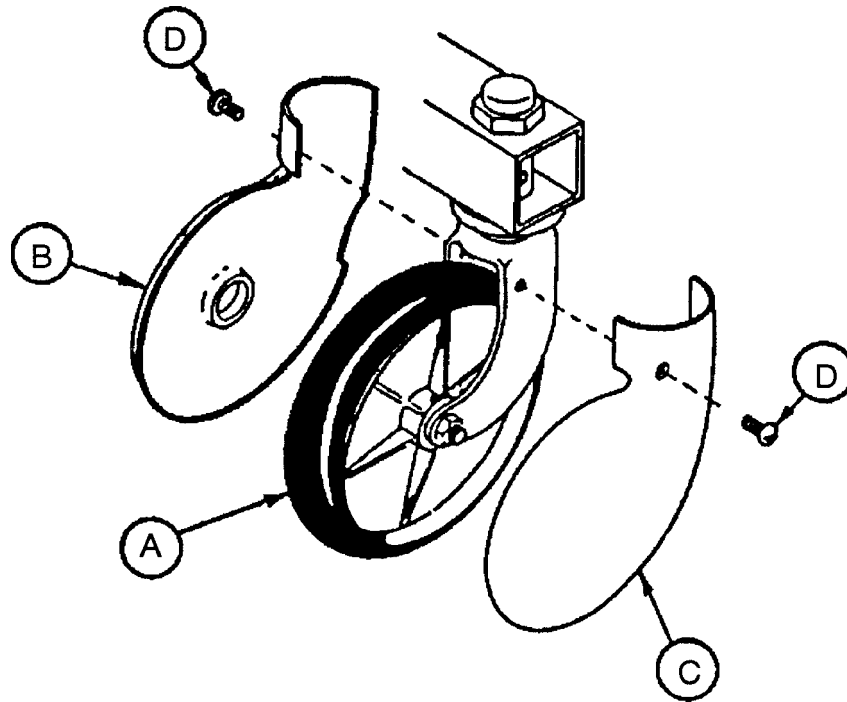
Item	Part No.	Part Name	Qty.
A	715-1-170	Brake Pedal Ass'y, Welded	1
B	715-1-145	Brake Pedal	2

2020-46-220 Steering Caster Assembly



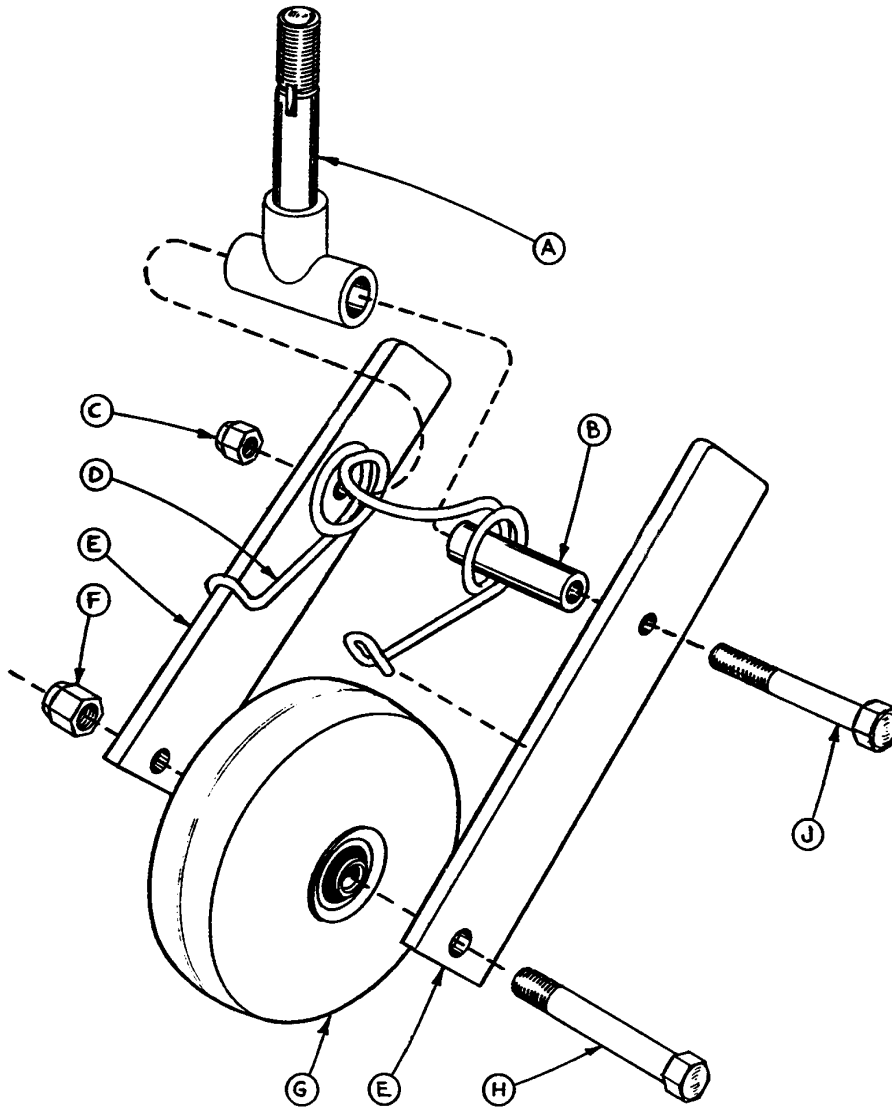
Item	Part No.	Part Name	Qty.
A	946-1-279	Caster Assembly	1
B	1000-59-10	Latch Ass'y, Steer Caster	1

Caster and Caster Cover Assembly



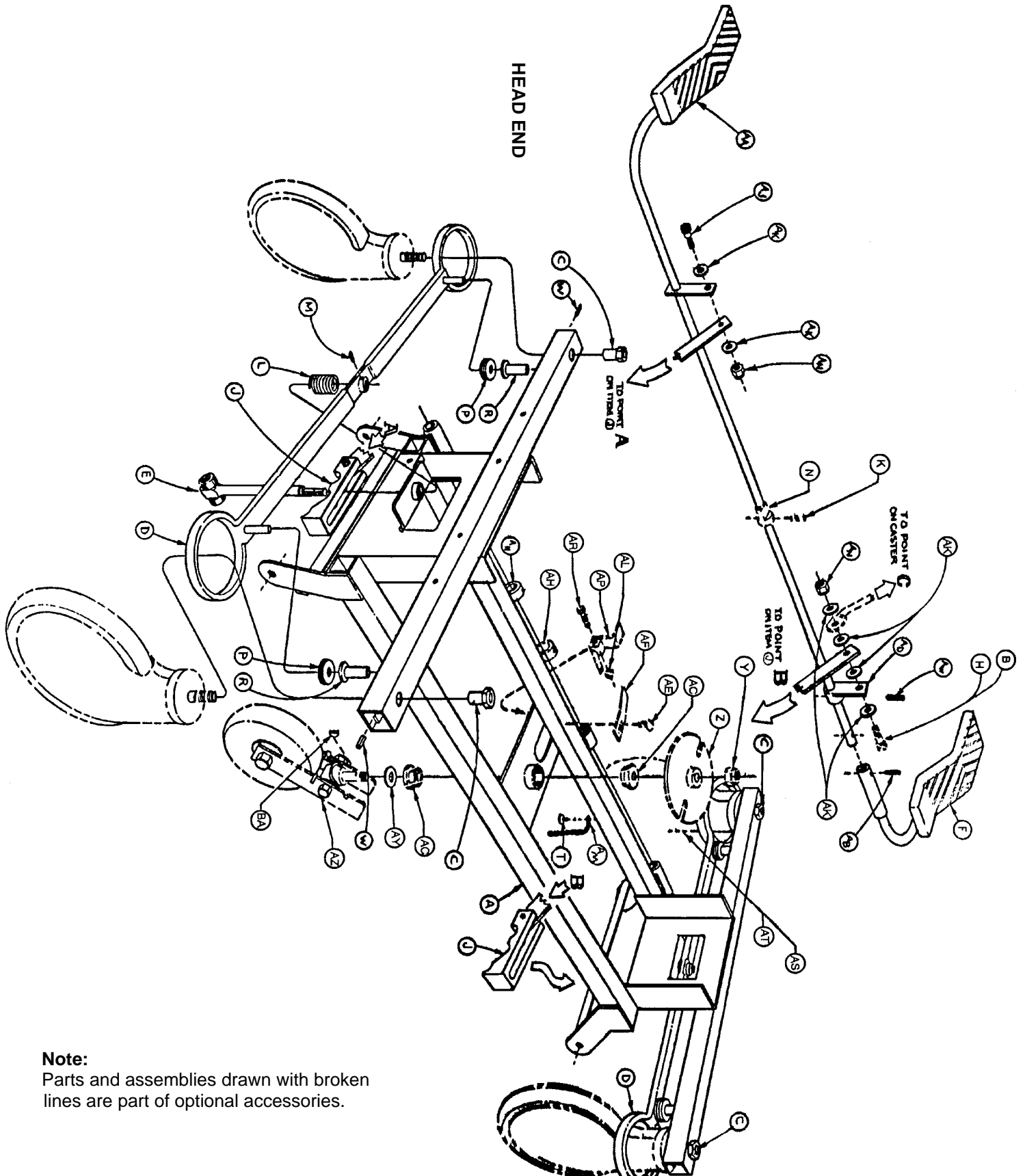
Item	Part No.	Part Name	Qty.
A	946-1-276	Caster Assembly	1
B	715-1-139	Caster Cover, Left	1
C	715-1-138	Caster Cover, Right	1
D	23-59	Pan Hd. Self-Tapping Screw	2

715-1-25 Fifth Wheel Assembly



Item	Part No.	Part Name	Qty.
A	715-1-339	Fifth Wheel Pivot Assembly	1
B	715-1-17	Fifth Wheel Bushing	1
C	16-11	Flexlock Nut	1
D	715-1-15	Spring	1
E	715-1-13	Fifth Wheel Bracket	2
F	16-12	Flexlock Nut	1
G	390-1-54	Wheel	1
H	3-31	Hex Head Cap Screw	1
J	3-82	Hex Head Cap Screw	1

716-1-251 End Control Base Assembly (with Wheels)



Note:
Parts and assemblies drawn with broken lines are part of optional accessories.

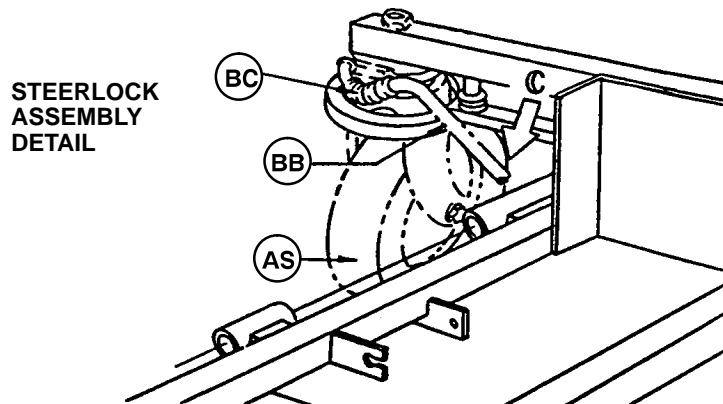
716-1-251 End Control Base Assembly (with Wheels)

Item	Part No.	Part Name	Qty.
A	716-1-246	Base Weldment Ass'y	1
B	8-17	Soc. Hd. Shoulder Bolt	1*
C	715-1-158	Caster Nut	4
D	715-1-61	Caster Brake Assembly	2
E	(Page 18)	Brake Adjuster Assembly	2
F	(Page 26)	Brake Pedal Ass'y, Ft. End	1
H	8-21	Soc. Hd. Shoulder Bolt	1**
J	(Page 19)	Brake Cam Assembly	2
K	26-8	Roll Pin	1
L	715-1-94	Compression Spring	2
M	21-50	Set Screw	2
N	715-1-161	Fifth Wheel Cam	1
P	715-1-11	Brake Cushion	4
R	946-1-116	Brake Bar Bushing	4
T	23-25	Self-Tapping Screw	1
W	26-5	Roll Pin	4
Y	16-49	Flexlock Nut	1
Z	715-1-337	Fifth Wheel Plate Ass'y	1
AA	(Page 27)	Brake Pedal Ass'y, Hd. End	1
AB	26-35	Roll Pin	1
AC	715-1-157	Fifth Wheel Bearing	2
AD	715-1-165	Actuator Plate Assembly	1
AE	7-4	Truss Hd. Mach. Screw	1
AF	715-1-136	Fifth Wheel Spring	1
AH	42-20	Collar w/ Set Screw	2
AJ	8-17	Soc. Hd. Shoulder Bolt	1
AK	14-2	Nylon Washer	6
AL	16-16	Nylock Nut	1
AM	715-1-156	Grounding Chain	1
AN	16-2	Fiberlock Nut	2
AP	715-1-217	Fifth Wheel Latch	1
AR	3-20	Hex Hd. Cap Screw	1
AS	(Page 21)	Steering Caster Ass'y	1**
AT	(Page 22)	Caster Wheel Ass'y	3***
AY	11-176	Washer	1
AW	26-13	Roll Pin	1
AZ	(Page 23)	Fifth Wheel Ass'y	1
BA	715-1-149	Woodruff Key	1
BB	1000-10-62	Steering Lock Linkage Bar	1
BC	38-211	Spring	1

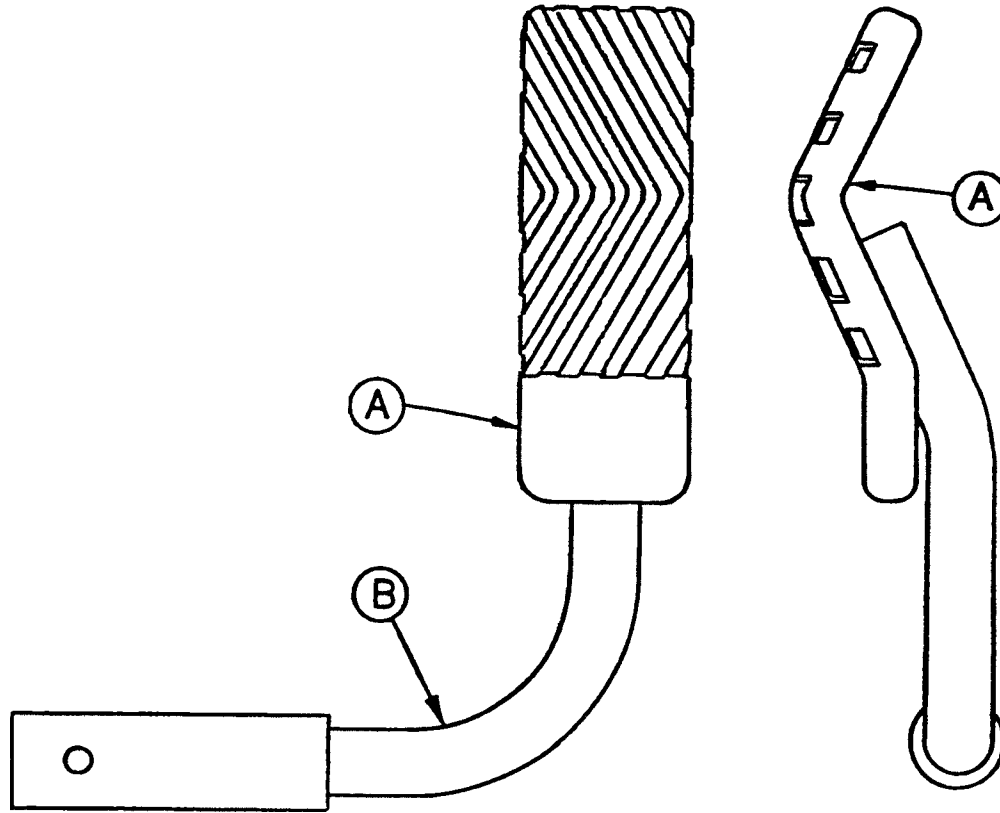
* Item B to be used only when fifth wheel is ordered.

** Items H and AS to be used only when steerlock caster is ordered.

*** Item AT quantity of four when fifth wheel is ordered.

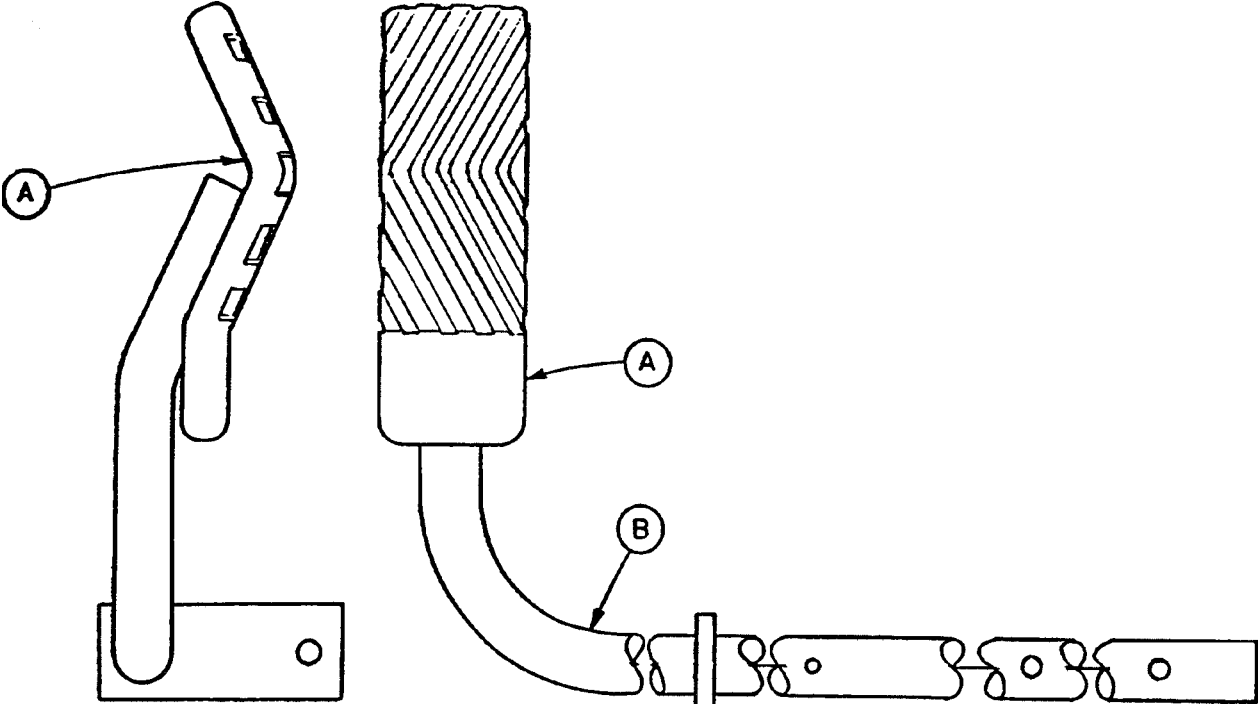


716-1-263 Brake Pedal Ass'y, Foot, End Control Base



Item	Part No.	Part Name	Qty.
A	716-1-275	Brake Pedal	1
B	716-1-262	Brake Rod Ass'y, Ft. End	1

716-1-269 Brake Pedal Ass'y, Head, End Control Base

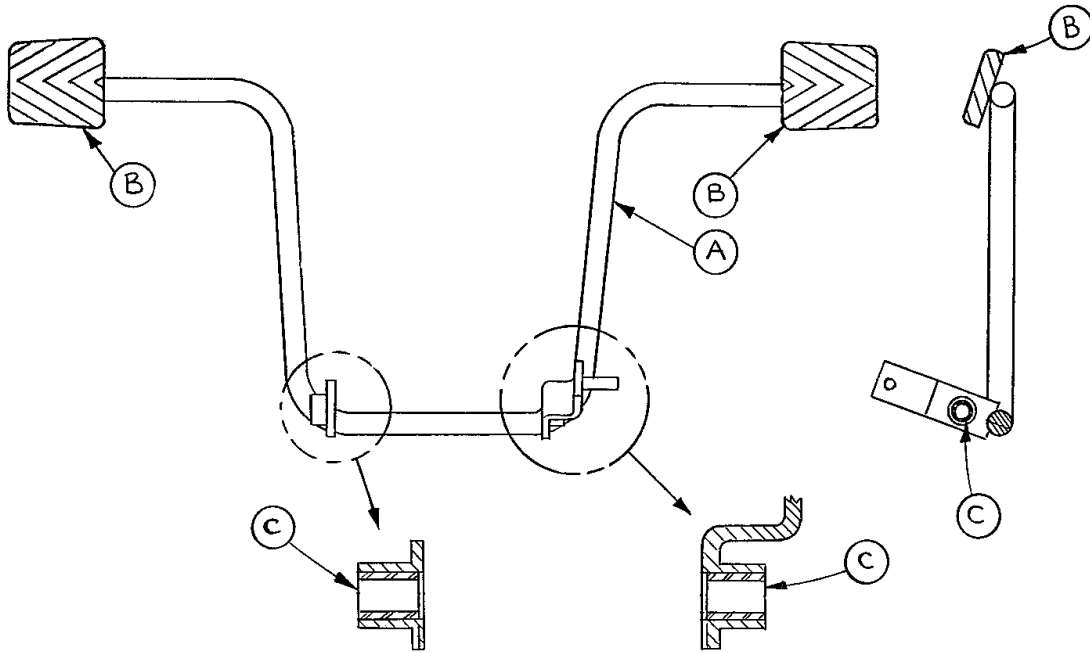


Item	Part No.	Part Name	Qty.
A	716-1-275	Brake Pedal	1
B	716-1-267	Brake Rod Ass'y, Welded	1

715-1-260 Side Control Base Assembly (with Jacks)

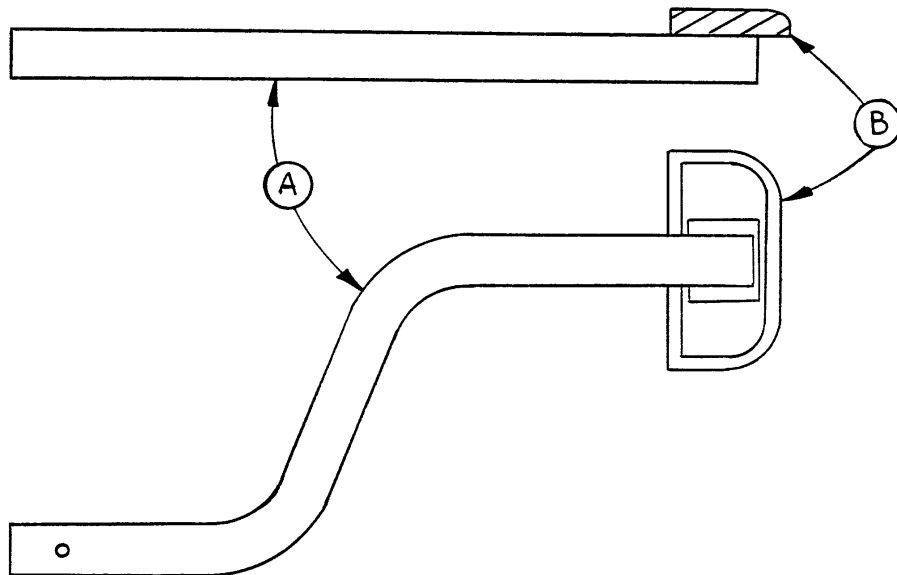
Item	Part No.	Part Name	Qty.
A	29-7	Dual Lock	2
B	(Page 38)	Jack Assembly	2
C	715-1-55	Jack Base Mounting Plate	4
D	3-62	Hex Hd. Cap Screw	8
E	11-3	Flat Washer	20
F	16-36	Nylock Hex Nut	16
H	715-1-192	Jack Support	2
J	3-85	Hex Hd. Cap Screw	4
K	3-86	Hex Hd. Cap Screw	4
L	715-1-193	Jack Support Clamp	2
M	13-38	Ext. Tooth Lock Washer	8
P	29-9	Dual Lock	2
R	763-1-16	Spring Holder	1
S	38-246	Jack Spring	1
T	715-1-133	Collar	1
W	715-1-27	Pump Connect. Rod Ass'y	1
Y	4-146	Hex Socket Hd. Cap Screw	2
Z	16-48	Nylock Hex Nut	2
AA	715-1-333	Release Rod Stop Sleeve	2
AB	715-1-37	Release Paddle Assembly	1
AC	21-50	Hex Socket Set Screw	2
AD	715-1-40	Release Rod Ass'y, Ft. End	1
AE	42-13	Shaft Collar w/ Set Screw	2
AF	52-245	Nyliner	4
AH	14-4	Nylon Washer	4
AJ	38-234	Compression Spring	2
AK	(Page 33)	Hood	1
AL	27-4	Cotter Pin	4
AM	715-1-187	Rel. Pedal Sleeve Ass'y	2
AR	4-85	Soc. Hd. Cap Screw	4
AS	16-3	Fiberlock Nut	4
AT	715-1-214	Connector Link, Mach'd	1
AW	(Page 30)	Pedal Base Assembly	1
AY	715-1-92	Pump Pedal Shaft	1
AZ	715-1-95	Bellows, Head End	1
BA	715-1-46	Rel. Rod Ass'y, Hd. End	1
BB	715-1-43	Rel. Pedal Ass'y, Hd. End	1
BC	14-9	Nylon Washer	8
BD	715-1-140	Raufilam Braid Tubing	1
BE	715-1-134	Bellows, Foot End	1
BF	(Page 31)	Pedal Base Ass'y, Hd. Left	2
BH	(Page 32)	Pedal Base Ass'y, Hd. Right	2
BJ	3-3	Hex Hd. Cap Screw	2
BK	16-16	Fiberlock Nut	2
BL	11-53	Washer	6
BM	21-22	Set Screw	2
BN	27-15	Cotter Pin	2

715-1-108 Pedal Base Assembly, Pump



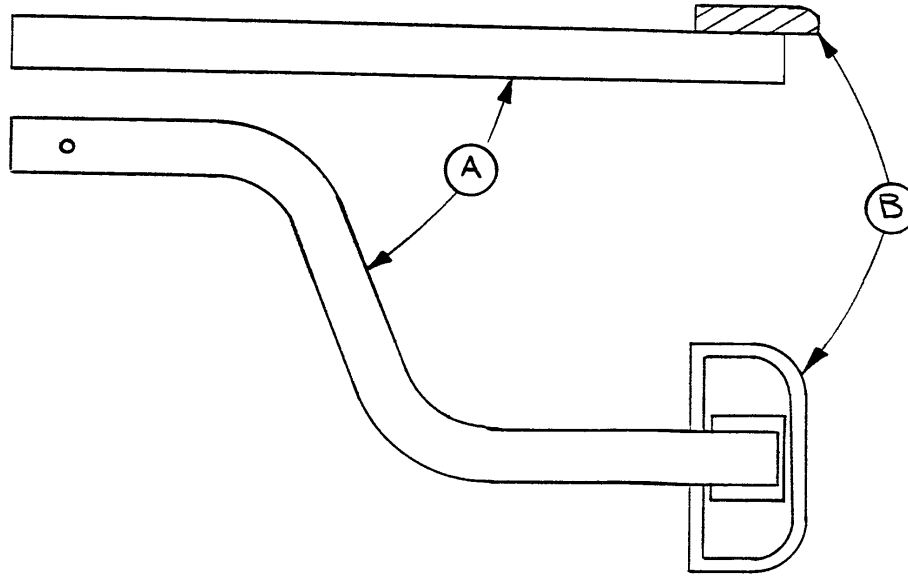
Item	Part No.	Part Name	Qty.
A	715-1-83	Pedal Ass'y Weldm't, Pump	1
B	715-1-126	Side Control Pedal Pad	2
C	81-44	Bearing, Bronze	2

715-1-109 Pedal Base Assembly, Head End, Left



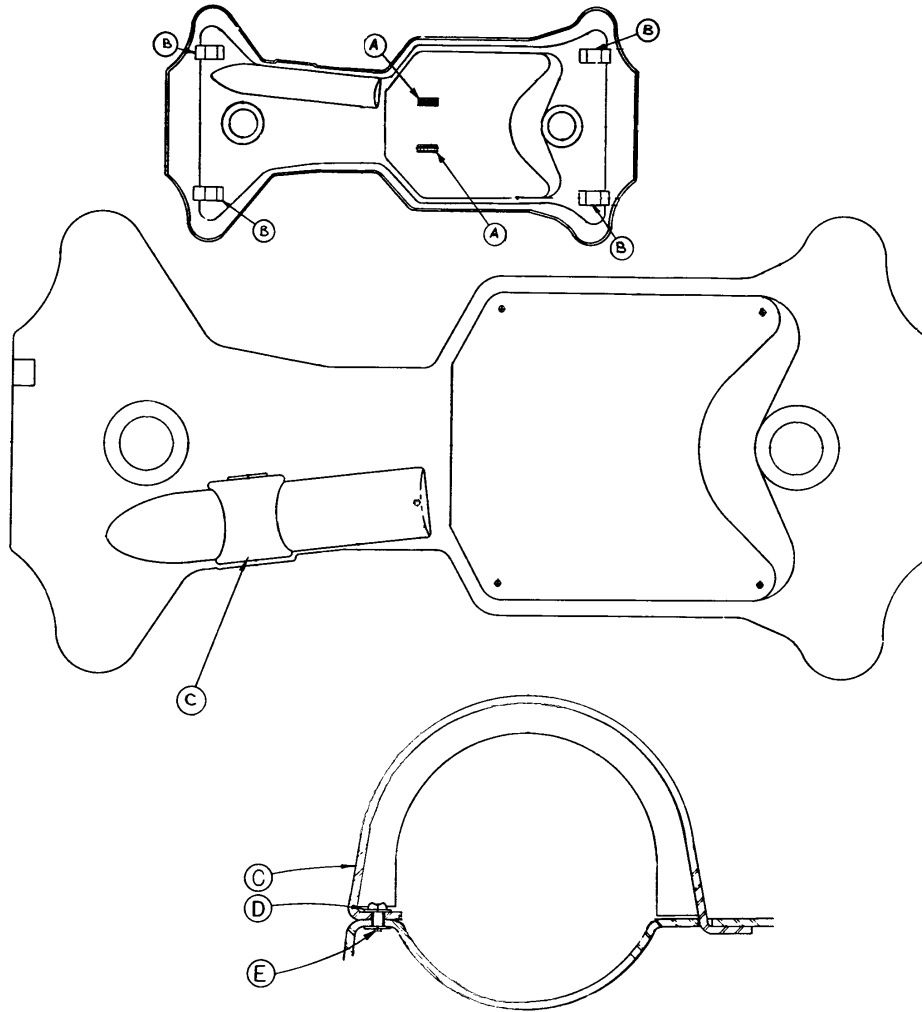
Item	Part No.	Part Name	Qty.
A	715-1-98	Release Ped. Wldmt., Hd. Lt.	1
B	721-40-25	Pedal	1

715-1-110 Pedal Base Assembly, Head End, Right



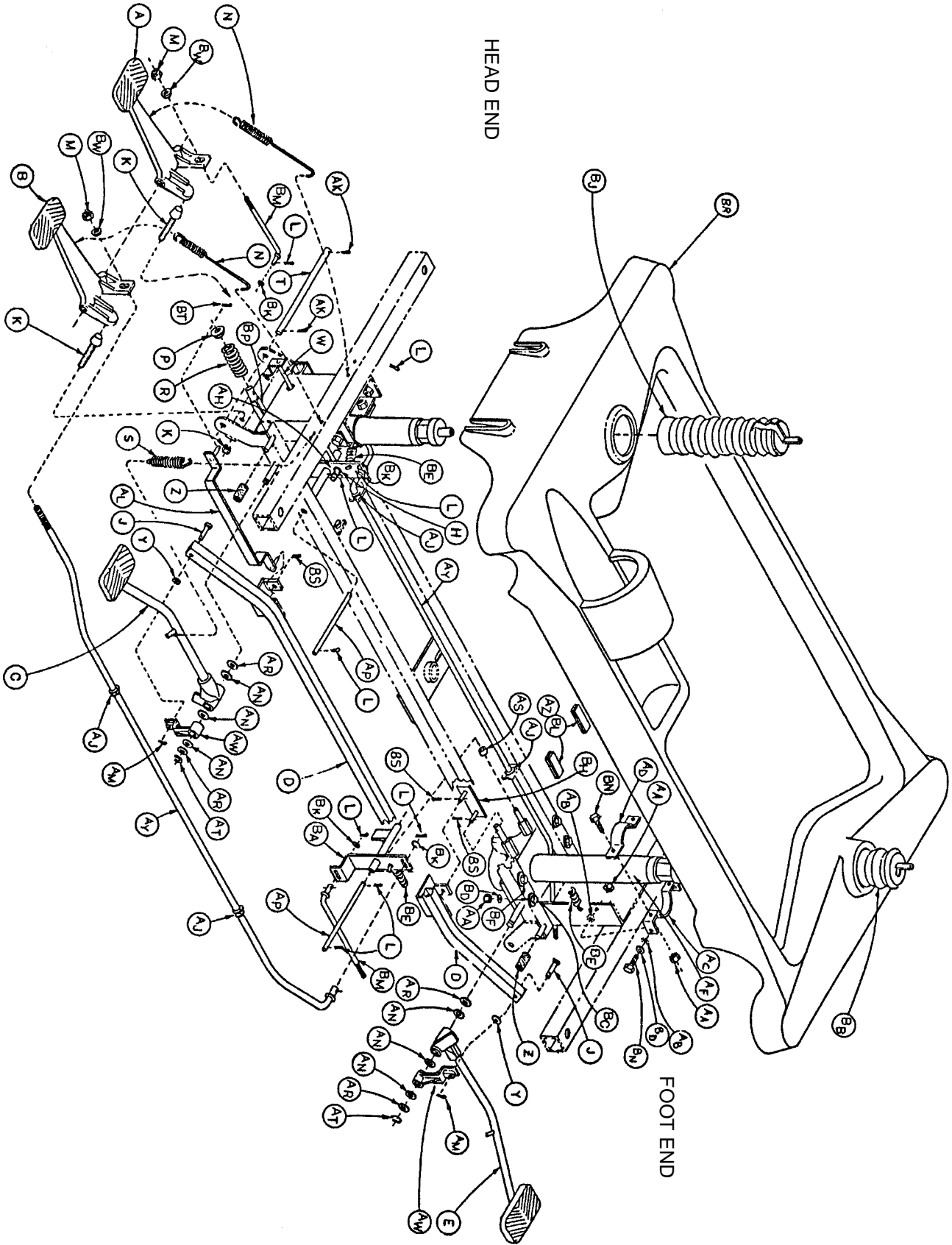
Item	Part No.	Part Name	Qty.
A	715-1-97	Release Pedal Weldment	1
B	721-40-25	Pedal	1

715-1-135 Side Control Base Hood Assembly



Item	Part No.	Part Name	Qty.
A	715-1-153	Hood Spacer	2
B	715-1-151	Foam Hood Mount	4
C	715-1-176	Oxygen Bottle Retainer	1
D	11-16	Washer	2
E	25-88	Pop Rivet	2

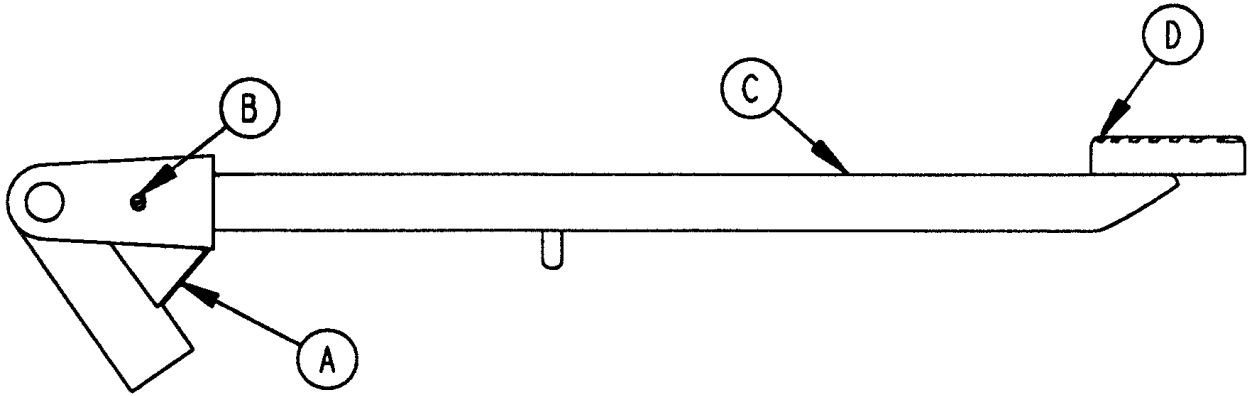
716-1-270 End Control Base Assembly (with Jacks)



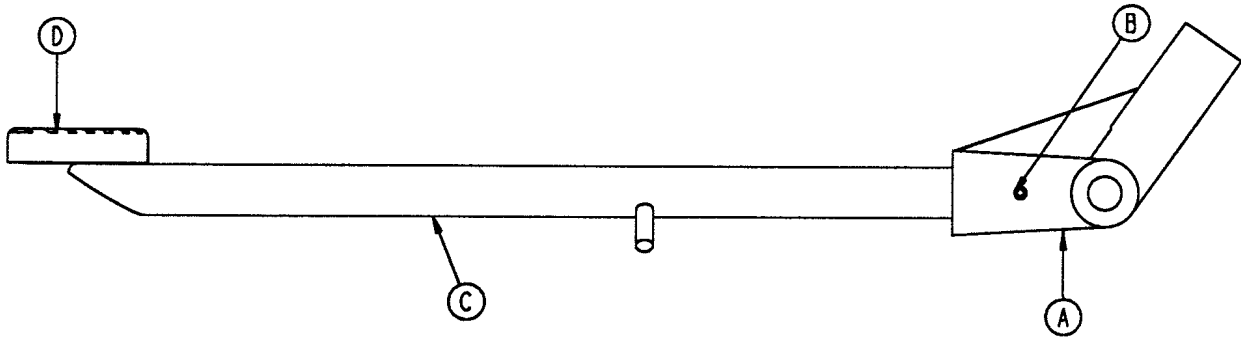
716-1-270 End Control Base Assembly (with Jacks)

Item	Part No.	Part Name	Qty.
A	716-1-293	Rel Pedal, Hd. Lt. & Ft. Rt.	2
B	716-1-294	Rel. Pedal, Hd. Rt. & Ft. Lt.	2
C	(Page 36)	Pump Pedal Ass'y, Foot	1
D	715-1-115	Pump Conn. Rod Ass'y	1
E	(Page 36)	Pump Pedal Ass'y, Head	1
H	14-3	Washer	2
J	26-195	Clevis Pin	2
K	37-68	Flat Cushion Spindle Ass'y	4
L	27-4	Cotter Pin	10
M	16-16	Nylock Nut	4
N	38-235	Spring	4
P	715-1-133	Spring Collar	1
R	763-1-15	Spring	1
S	38-251	Spring	2
T	716-1-61	Pedal Shaft	2
W	716-1-112	Rel. Rod Wldmt., Hd., Lt.	1
Y	14-9	Washer	2
Z	715-1-140	PVC Tubing	2
AA	16-36	Nylock Hex Nut	16
AB	13-38	Ext. Tooth Lock Washer	4
AC	715-1-192	Jack Support	2
AD	715-1-193	Jack Clamp	2
AF	(Page 38)	Jack Assembly	2
AH	716-1-119	Pivot Assembly, Head End	1
AJ	52-245	Nyliner	3
AK	27-7	Cotter Pin	4
AL	716-1-109	Pump Link Bar Wldmt., Hd.	1
AM	27-16	Cotter Pin	2
AN	14-7	Nylon Flat Washer	6
AP	716-1-15	Release Pivot Bar	2
AR	11-13	Flat Washer	4
AS	715-1-333	Release Rod Stop Sleeve	2
AT	28-97	Snap Ring	2
AW	716-1-281	Pump Idler Link	2
AY	716-1-71	Release Rod Ass'y	2
AZ	29-7	Dual Lock	2
BA	716-1-52	Pivot Assembly, Foot	1
BB	716-1-134	Bellows, Ft. End	1
BC	3-62	Hex Hd. Cap Screw	8
BD	11-3	Washer	12
BE	38-259	Extension Spring	2
BF	11-262	Flat Washer	8
BH	716-1-102	Pump Link Wldmt. Ass'y, Ft.	1
BJ	715-1-95	Bellows, Head End	1
BK	14-2	Washer	4
BL	29-9	Dual Lock	2
BM	716-1-75	Release Rod	2
BN	3-85	Hex Hd. Cap Screw	8
BP	763-1-16	Spring Guide	1
BR	(Page 37)	Hood	1
BS	27-13	Cotter Pin	3
BT	27-3	Cotter Pin	1
BW	716-1-286	Cam, Release Pedal	4

716-1-292 & 288 Pump Pedal Assembly, Head & Foot

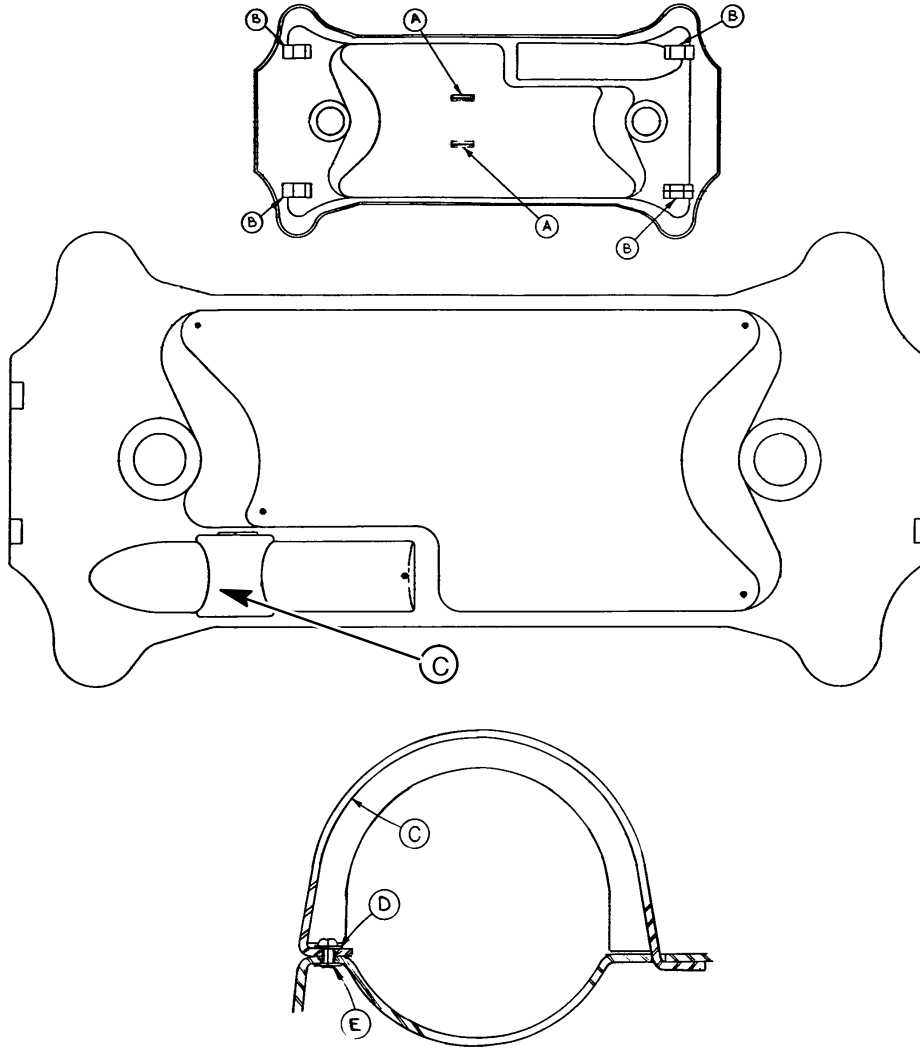


Item	Part No.	Part Name	Qty.
A	716-1-285	Pump Pivot, Head End	1
B	26-12	Roll Pin	1
C	716-1-290	Pump Ped. Wldmt., Head	1
D	721-40-25	Pedal	1



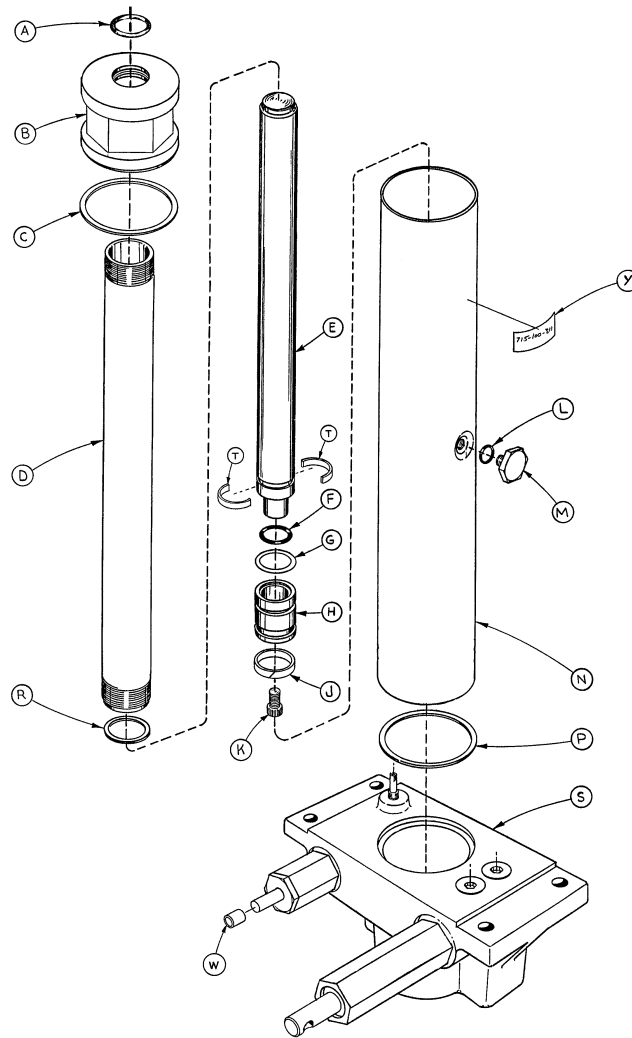
Item	Part No.	Part Name	Qty.
A	716-1-283	Pump Pivot, Foot End	1
B	26-12	Roll Pin	1
C	716-1-289	Pump Ped. Wldmt., Foot	1
D	721-40-25	Pedal	1

716-1-99 End Control Base Hood Assembly



Item	Part No.	Part Name	Qty.
A	716-1-153	Hood Spacer	2
B	715-1-151	Foam Hood Mount	4
C	715-1-176	Oxygen Bottle Retainer	1
D	11-16	Washer	2
E	25-77	Pop Rivet	2

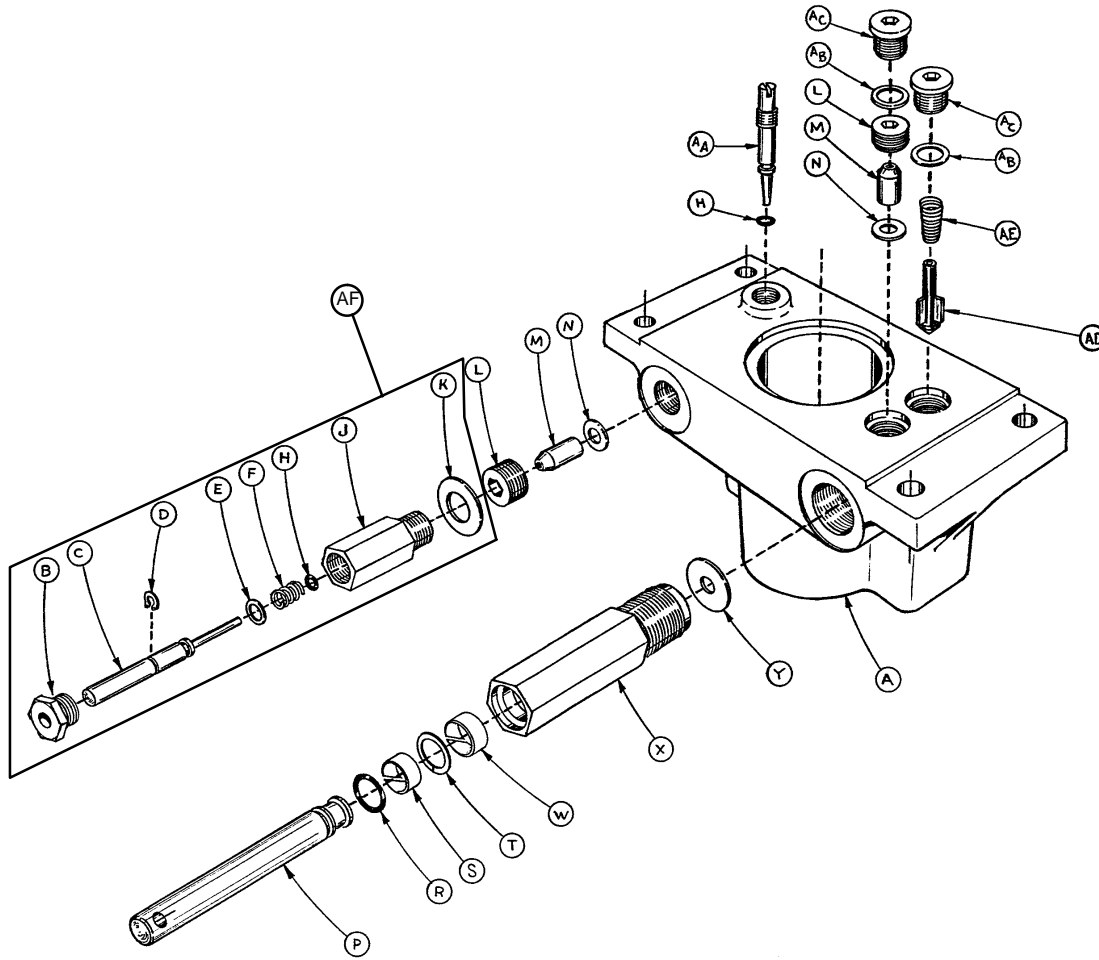
715-1-310* Jack Assembly



Item	Part No.	Part Name	Qty.	Item	Part No.	Part Name	Qty.
A	45-904	O-Ring	1	L	45-110	O-Ring	1
B	715-1-340	Cap Assembly	1	M	388-1-38	Plug	1
C	390-1-243	Gasket	1	N	715-1-322	Reservoir	1
D	715-1-323	Actuator Cylinder	1	P	390-1-244	Gasket	1
E	715-1-325	Actuator	1	R	390-1-238	Gasket, Actuator	1
F	45-14	O-Ring	1	S	(Page 39)	Jack Base Assembly	1
G	926-20-161	Parker Packing	1	T	390-2-139	Retaining Collar	2
H	715-1-331	Piston End	1	W	715-1-333	Rel. Valve Stop Sleeve	1
J	926-20-162	Wear Ring	1	Y	715-100-311	Label	1
K	4-14	Soc. Hd. Cap Screw	1				

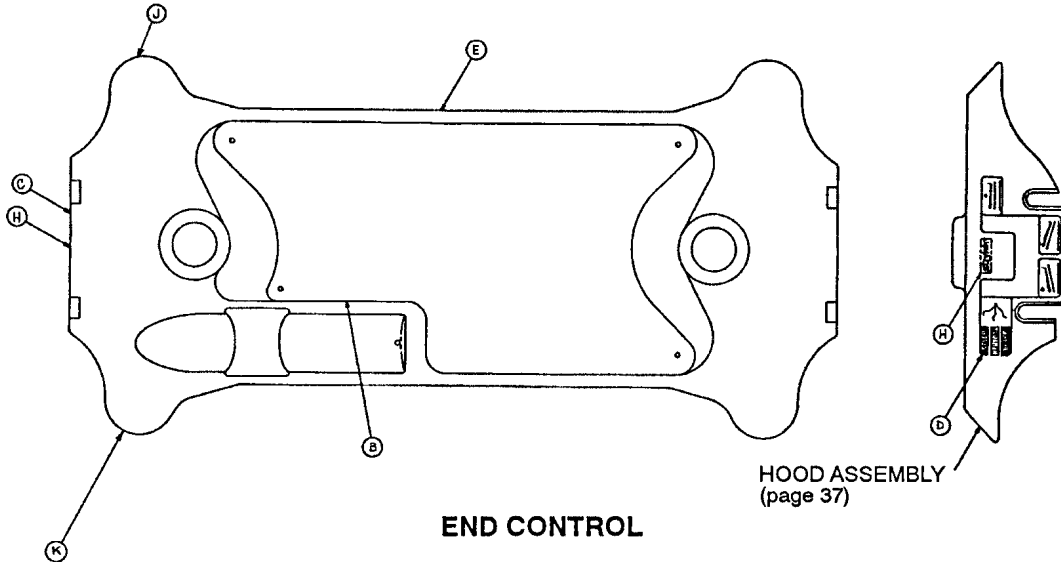
*Replacement Part Number 715-100-310.

715-1-300 Jack Base Assembly, Foot Control

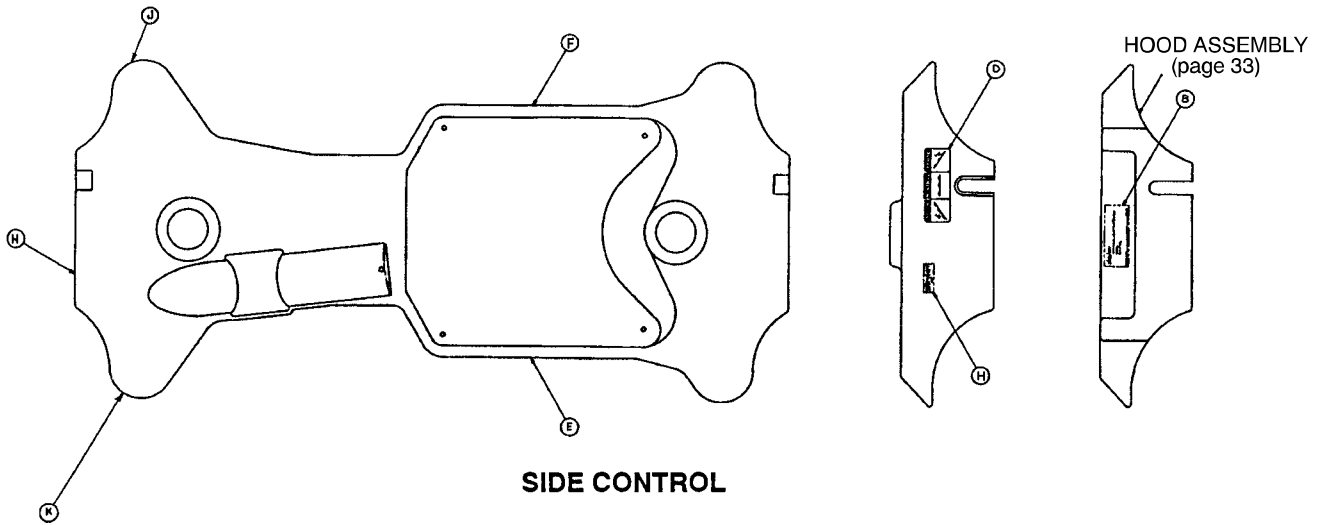


Item	Part No.	Part Name	Qty.	Item	Part No.	Part Name	Qty.
A	715-1-312	Base, Machined	1	R	45-110	O-Ring	1
B	715-1-308	Base Plug	1	S	715-1-328	Piston Wear Ring	1
C	715-1-306	Pin	1	T	14-50	Bearing Retainer	1
D	28-8	Snap Ring	1	W	715-1-327	Cylinder Wear Ring	1
E	390-2-176	Washer	1	X	715-1-316	Pump Cylinder	1
F	38-231	Compression Spring	1	Y	715-1-329	Pump Seal	1
H	45-6	O-Ring	2	AA	715-1-307	Needle Valve	1
J	715-1-305	Pin Housing	1	AB	926-20-156	Seal	2
K	715-1-330	Housing Gasket	1	AC	715-1-301	Base Plug	2
L	715-1-309	Valve Plug	2	AD	715-1-341	Poppet	1
M	926-20-153	Check Valve	2	AE	390-2-134	Conical Comp. Spring	1
N	926-20-154	Seal	2	AF	715-100-312	Pin Housing Assembly	1
P	715-1-318	Pump Piston	1				

Base Labeling Assembly

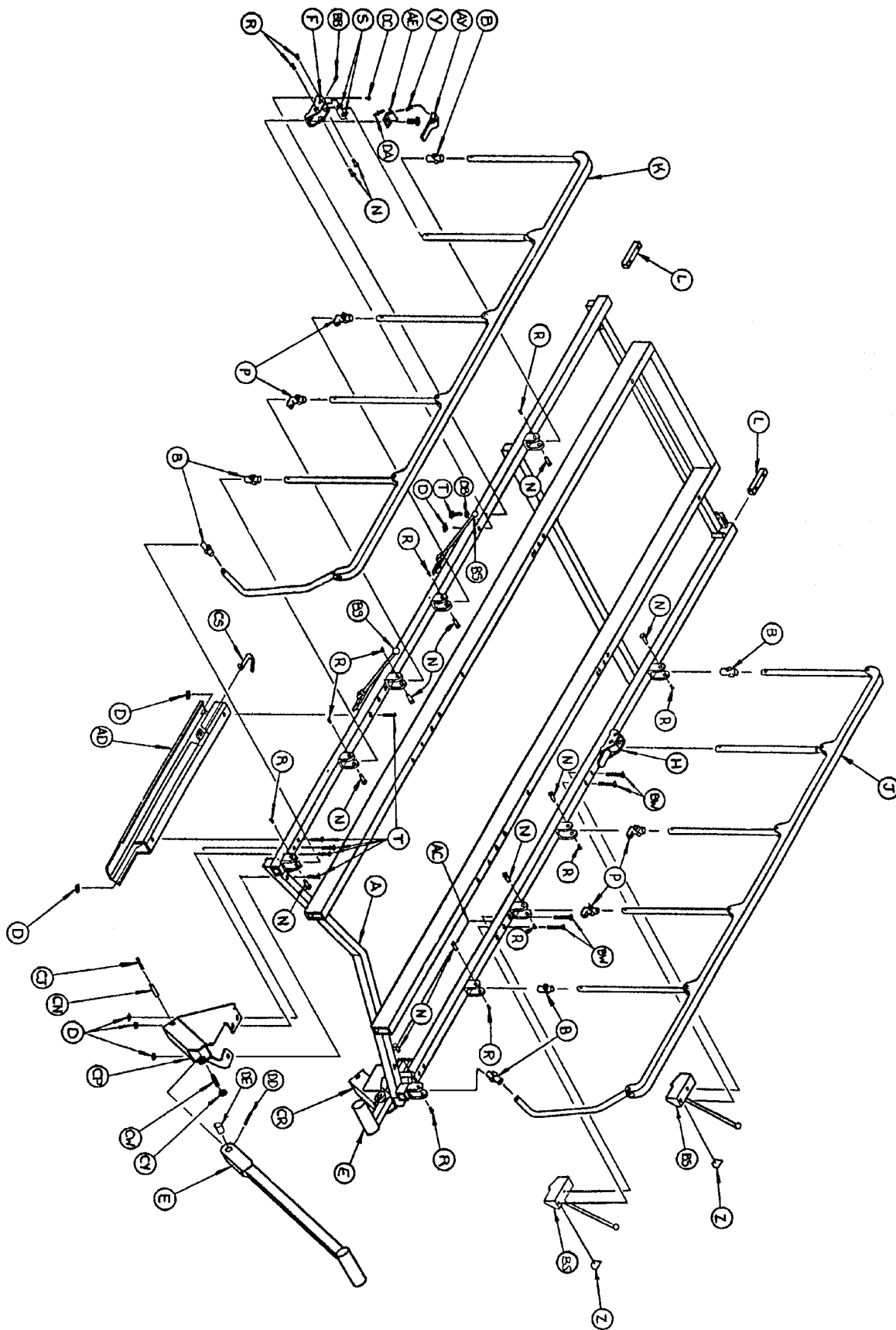


Item	Part No.	Part Name	Qty.
B	1066-1-17	Specification Label	1
C	1066-1-19	Brake/Steer Label, Head	1
D	1066-1-18	Brake/Steer Label, Foot	1
E	1066-1-23	Side Strip Label	2
F	1060-1-50	Renaissance Logo Label	2
H	946-1-60	Stryker Logo Label	2
J	741-34-18	"Head Point" Label, Left	1
K	741-34-19	"Head Point" Label, Right	1

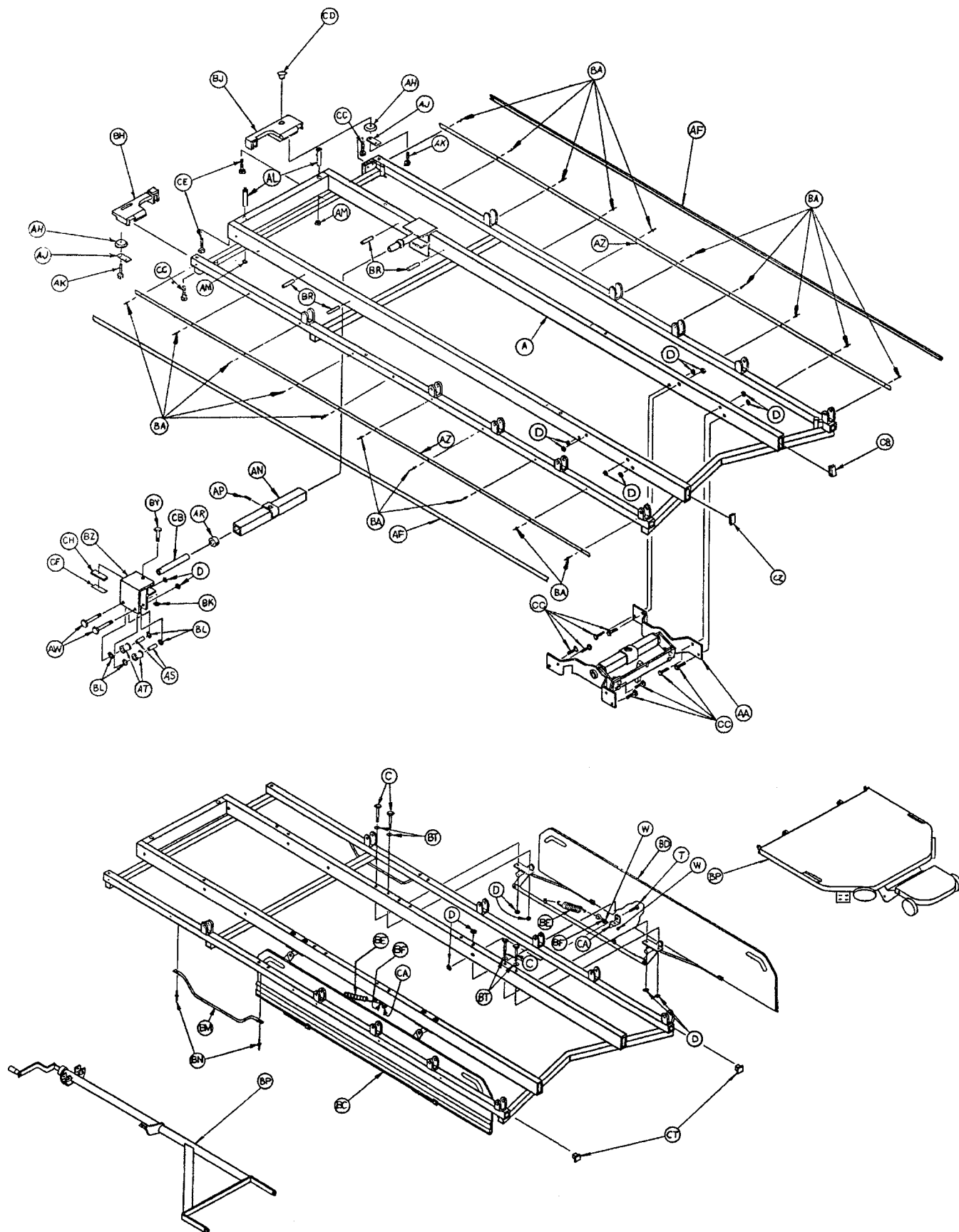


Item	Part No.	Part Name	Qty.
B	1066-1-17	Specification Label	1
C	1060-1-50	Renaissance Logo Label	2
D	741-1-146	Brake/Steer Label, Foot End	1
E	1066-1-21	Side Strip Label, Right	1
F	1066-1-20	Side Strip Label, Left	1
H	946-1-60	Stryker Logo Label	2
J	741-34-18	"Head Point" Label, Left	1
K	741-34-19	"Head Point" Label, Right	1

1066-1-10 Litter Assembly



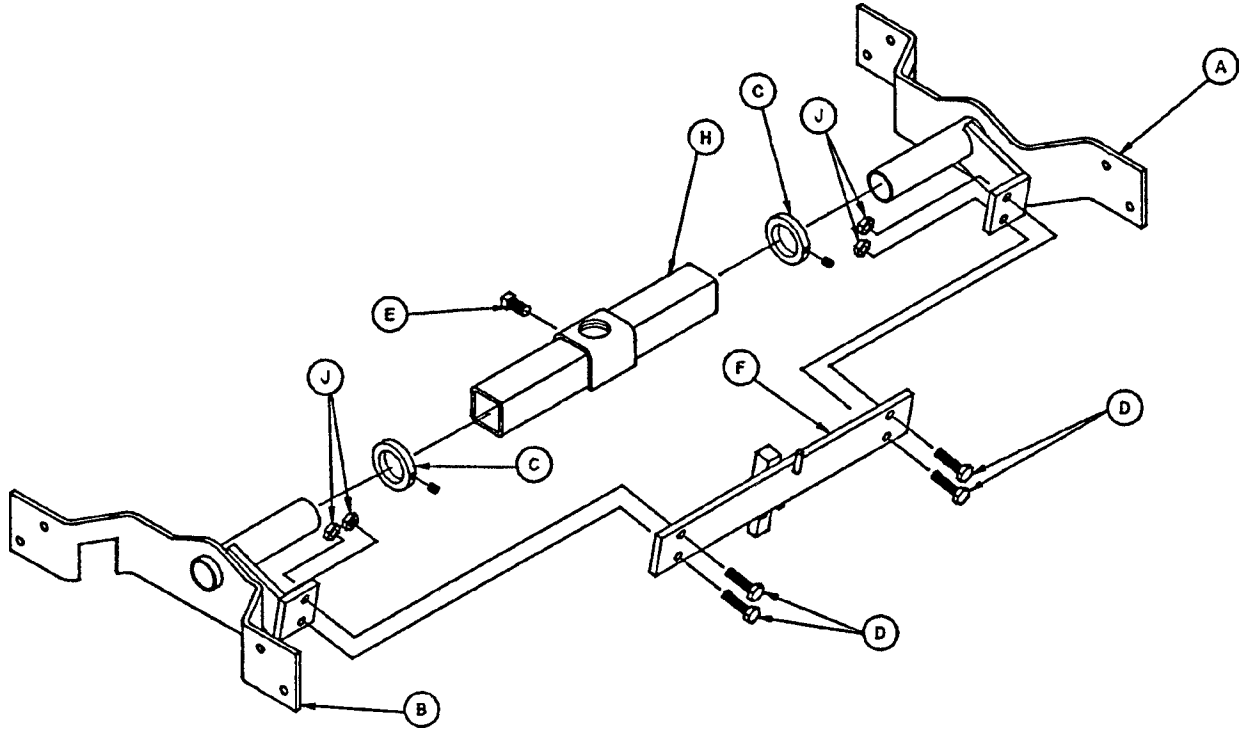
1066-1-10 Litter Assembly



1066-1-10 Litter Assembly

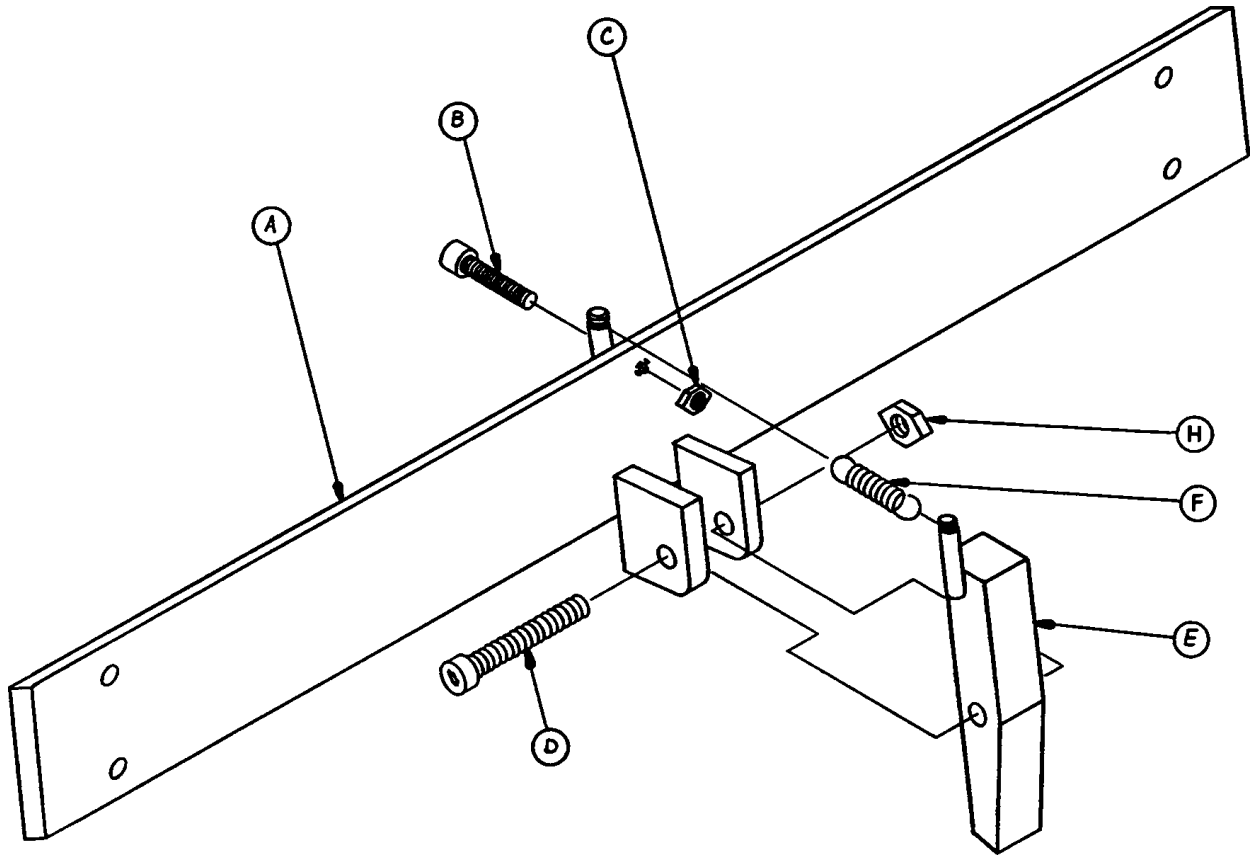
Item	Part No.	Part Name	Qty.	Item	Part No.	Part Name	Qty.
A	1066-1-50	Frame Assembly	1	BC	(page 46)	Trans. Sys. Ass'y, Lt.	1
B	721-26-69	Upright Sleeve	6	BD	(page 47)	Trans. Sys. Ass'y, Rt.	1
C	3-73	Hex Hd. Cap Screw	8	BE	38-218	Tension Spring	2
D	16-28	Nylock Hex Nut	32	BF	10-11	Eye Bolt	2
E	(page 57)	Handle Assembly	2	BH	1010-1-14	Cover, Foot, Left	1
F	1066-26-16	Lock Housing, Left	1	BJ	1010-1-13	Cover, Foot, Right	1
H	1066-26-18	Lock Housing, Right	1	BK	16-11	Flexlock Nut	2
J	(page)	Siderail Ass'y, Right	1	BL	11-14	Flat Washer	8
K	(page)	Siderail Ass'y, Left	1	BM	1010-32-92	Foley Bag Rack	2
L	1010-26-69	Lock Support	2	BN	25-79	Pop Rivet	4
N	721-26-66	Pivot Screw	14	BP	(page 49)	Crank Fowler Ass'y	1
P	721-26-68	Upright Cradle	4	BR	26-57	Roll Pin	4
R	4-136	But. Hd. Cap Screw	14	BS	(page 48)	Board Supt. Ass'y	2
S	11-179	Nylon Flat Washer	4	BT	11-180	Flat Washer	8
T	4-135	But. Hd. Cap Screw	16	BW	2-35	Straight Slot Screw	8
W	15-21	Jam Nut	4	BY	3-40	Hex Hd. Cap Screw	2
Y	38-220	Compression Spring	2	BZ	1010-32-108	Roller Assembly	2
Z	741-34-22	Warning Label	4	CA	1066-1-93	Spring Mount	2
AA	(page 44)	J. Supt./Trend. Limiter	1	CB	1010-32-64	Carrier Tube, Std.	2
AC	1066-1-85	Handle Rest Ass'y, Rt.	1	CC	3-47	Hex Hd. Cap Screw	10
AD	1066-1-87	Handle Rest Ass'y, Lt.	1	CD	37-59	Hole Plug	1
AE	1066-26-19	Spring Plate	2	CE	3-54	Hex Hd. Cap Screw	2
AF	1066-1-53	Siderail Bumper	2	CF	919-30-28	Rack Guide	2
AH	721-32-49	Bumper Roller	2	CH	44-29	Dbl.-Sided Foam Tape 6"	6"
AJ	1010-1-17	Roller Plate	2	CJ	26-12	Roll Pin	2
AK	8-24	Shoulder Bolt	2	CN	1066-1-80	Sound Bumper	2
AL	721-40-26	Foot Board Receptacle	2	CP	1066-1-70	Hand. Rec. Ass'y, Lt.	1
AM	28-23	Retaining Ring	2	CR	1066-1-62	Hand. Rec. Ass'y, Rt.	1
AN	1010-32-85	Support Tube Ass'y	1	CS	1066-1-94	Snap Button	2
AP	46-1	Sq. Hd. Set Screw	1	CT	1066-1-84	End Hole Plug	2
AR	938-1-401	Collar Assembly	2	CW	1066-1-69	Handle Stop	2
AS	721-32-107	Roller Sleeve	4	CY	16-57	Locking Hex Nut	2
AT	721-32-108	Support Roller	4	CZ	37-49	Hole Plug	2
AW	3-76	Hex Hd. Cap Screw	4	DA	25-65	Pop Rivet	2
AY	1066-26-22	Lock Handle	2	DB	11-2	Flat Washer	2
AZ	1066-1-83	Bumper Channel	2	DC	37-74	Hole Plug	2
BA	25-40	Pop Rivet	20	DD	26-6	Roll Pin	2
BB	21-104	Set Screw	2	DE	1066-1-45	Rubber Bumper	2

1066-1-90 Jack Support and Trend. Limiter Assembly



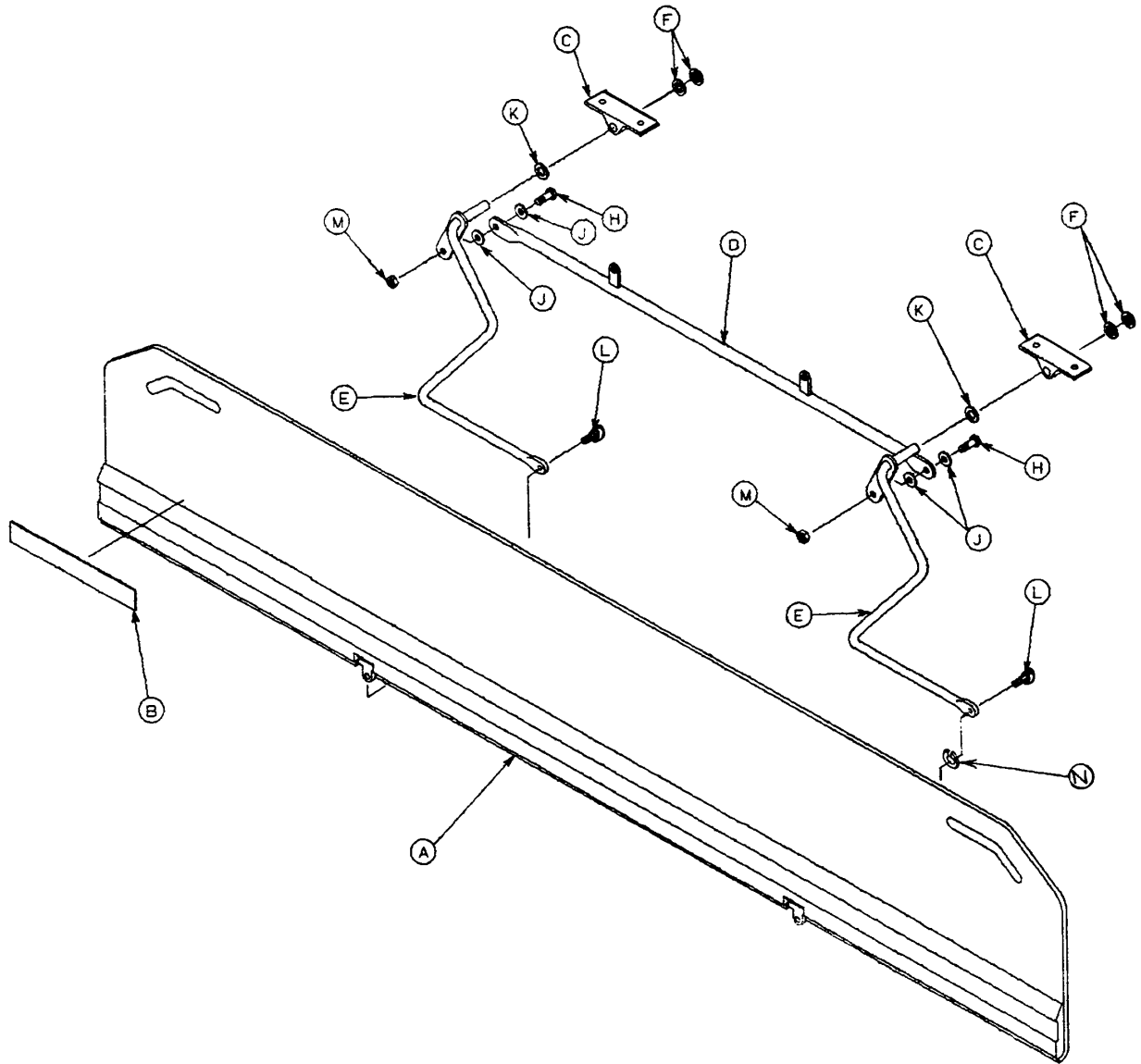
Item	Part No.	Part Name	Qty.
A	1066-1-13	Hd. Jack Mount Ass'y, Rt.	1
B	1066-1-91	Hd. Jack Mount Ass'y, Lt.	1
C	938-1-401	Collar	2
D	3-54	Hex Hd. Cap Screw	4
E	46-1	Set Screw	1
F	(page 45)	Trend Limiter Assembly	1
H	721-32-160	Support Tube Assembly	1
J	16-28	Nylock Nut	4

1010-23-34 Trend. Limiter Assembly



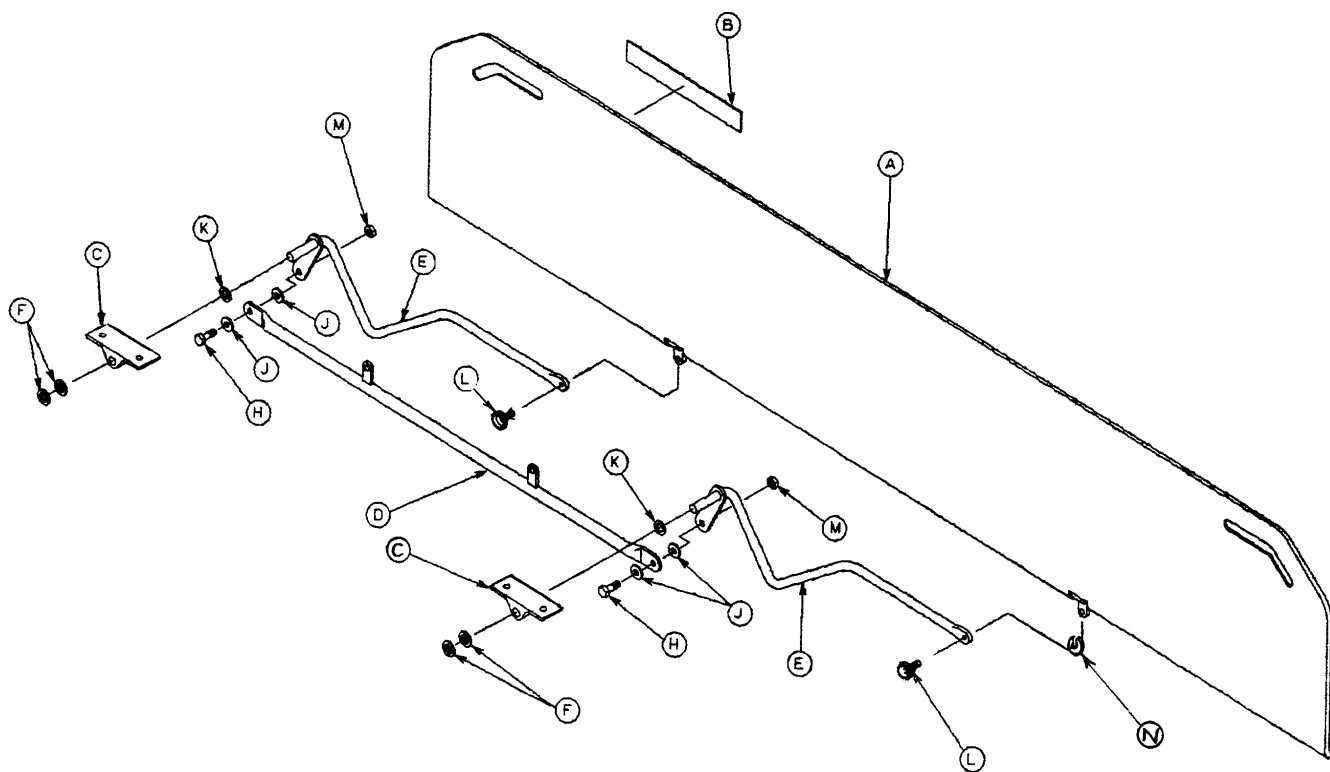
Item	Part No.	Part Name	Qty.
A	1010-23-35	Limiter Plate Ass'y	1
B	4-8	Hex Soc. Machine Screw	1
C	15-23	Hex Nut	1
D	4-142	Hex Soc. Machine Screw	1
E	715-1-114	Limiter Pin Assembly	1
F	38-233	Extension Spring	1
H	16-16	Fiberlock Nut	1

1010-32-103 Short Transfer System Assembly, Left



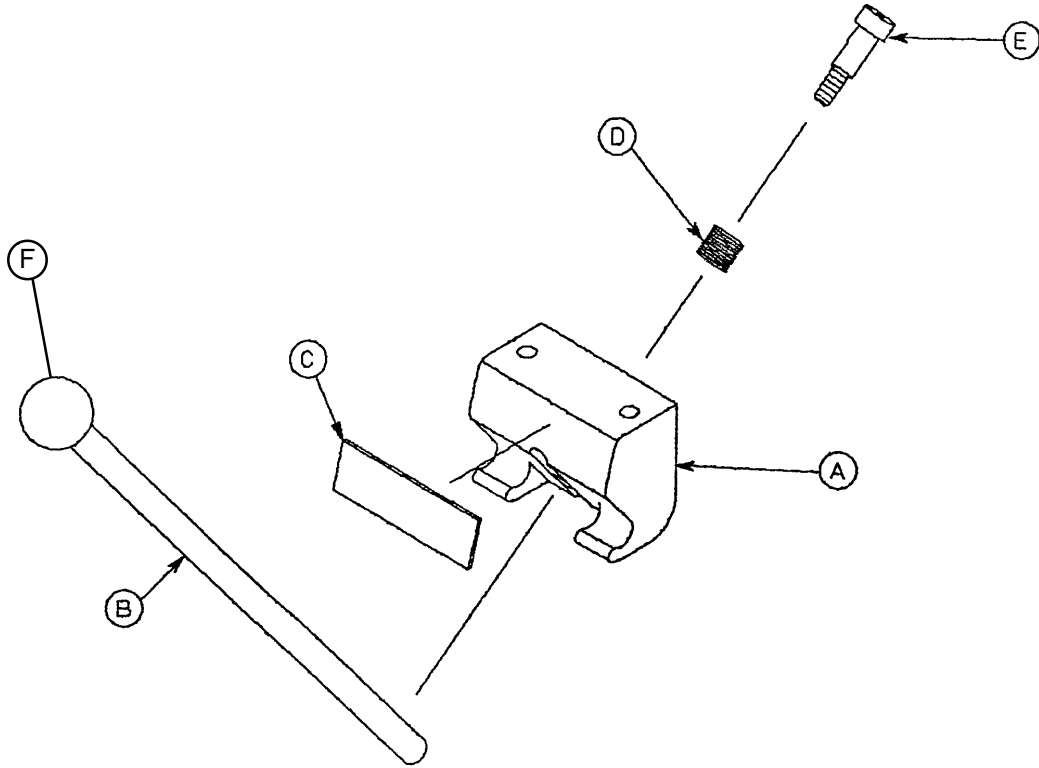
Item	Part No.	Part Name	Qty.
A	1010-32-100	Transfer Board Ass'y	1
B	721-24-46	Label	1
C	1010-32-98	Pivot	2
D	1010-24-22	Connecting Link Ass'y	1
E	1010-32-94	Pivot Arm Ass'y, Left	2
F	28-93	Retaining Ring	4
H	3-50	Hex Hd. Cap Screw	2
J	11-224	Nylon Flat Washer	4
K	14-21	Nylon Flat Washer	2
L	4-156	Soc. Hd. Cap Screw	2
M	16-28	Nylock Hex Nut	2
N	14-2	Washer	1

1010-32-104 Short Transfer System Assembly, Right



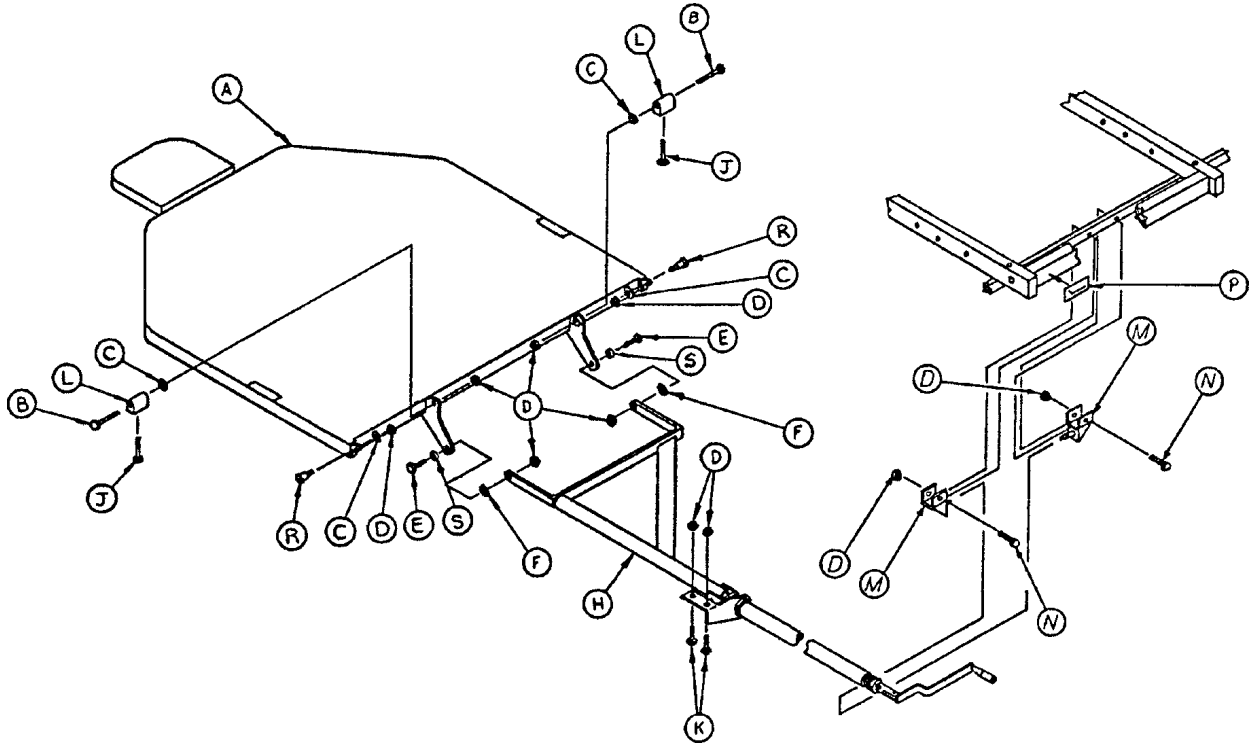
Item	Part No.	Part Name	Qty.
A	1010-32-100	Transfer Board Ass'y	1
B	721-24-46	Label	1
C	1010-32-98	Pivot	2
D	1010-24-22	Connecting Link Ass'y	1
E	1010-32-96	Pivot Arm Ass'y, Right	2
F	28-93	Retaining Ring	4
H	3-50	Hex Head Cap Screw	2
J	11-224	Nylon Flat Washer	4
K	14-21	Nylon Flat Washer	2
L	4-156	Soc. Hd. Cap Screw	2
M	16-28	Nylock Hex Nut	2
N	14-2	Washer	1

1010-24-30 Board Support Assembly



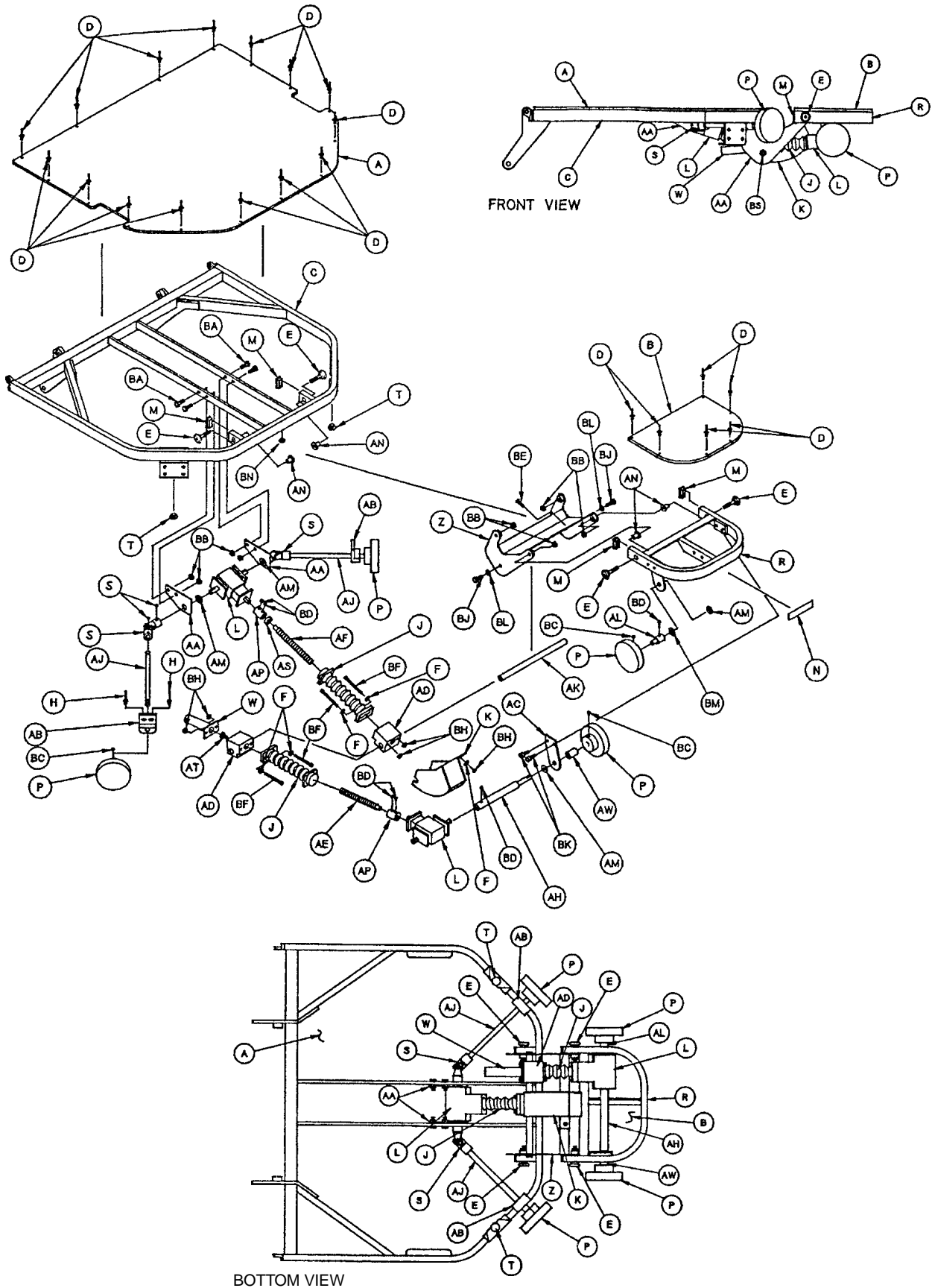
Item	Part No.	Part Name	Qty.
A	1010-24-15	Support Block	1
B	1010-24-16	Support Arm	1
C	1010-24-14	Warning Label	1
D	38-263	Spring	1
E	8-17	Shoulder Bolt	1
F	1010-26-46	Ball Knob	1

1066-33-17 Crank Fowler Assembly



Item	Part No.	Part Name	Qty.
A	(page 50)	Crank Fowler Subassembly	1
B	8-28	Shoulder Bolt	2
C	11-179	Washer	4
D	16-28	Lock Nut	10
E	8-15	Shoulder Bolt	2
F	14-3	Flat Washer	2
H	(page 52)	Crankscrew Assembly	1
J	3-79	Hex Hd. Cap Screw	2
K	3-73	Hex Hd. Cap Screw	2
L	1510-33-38	Crank Fowler Pivot	2
M	1010-34-15	Mounting Bracket Assembly	2
N	3-78	Hex Hd. Cap Screw	2
P	946-1-64	Fowler Symbol Label	1
R	1010-32-60	Pivot Bolt	2
S	1066-33-68	Sleeve	2

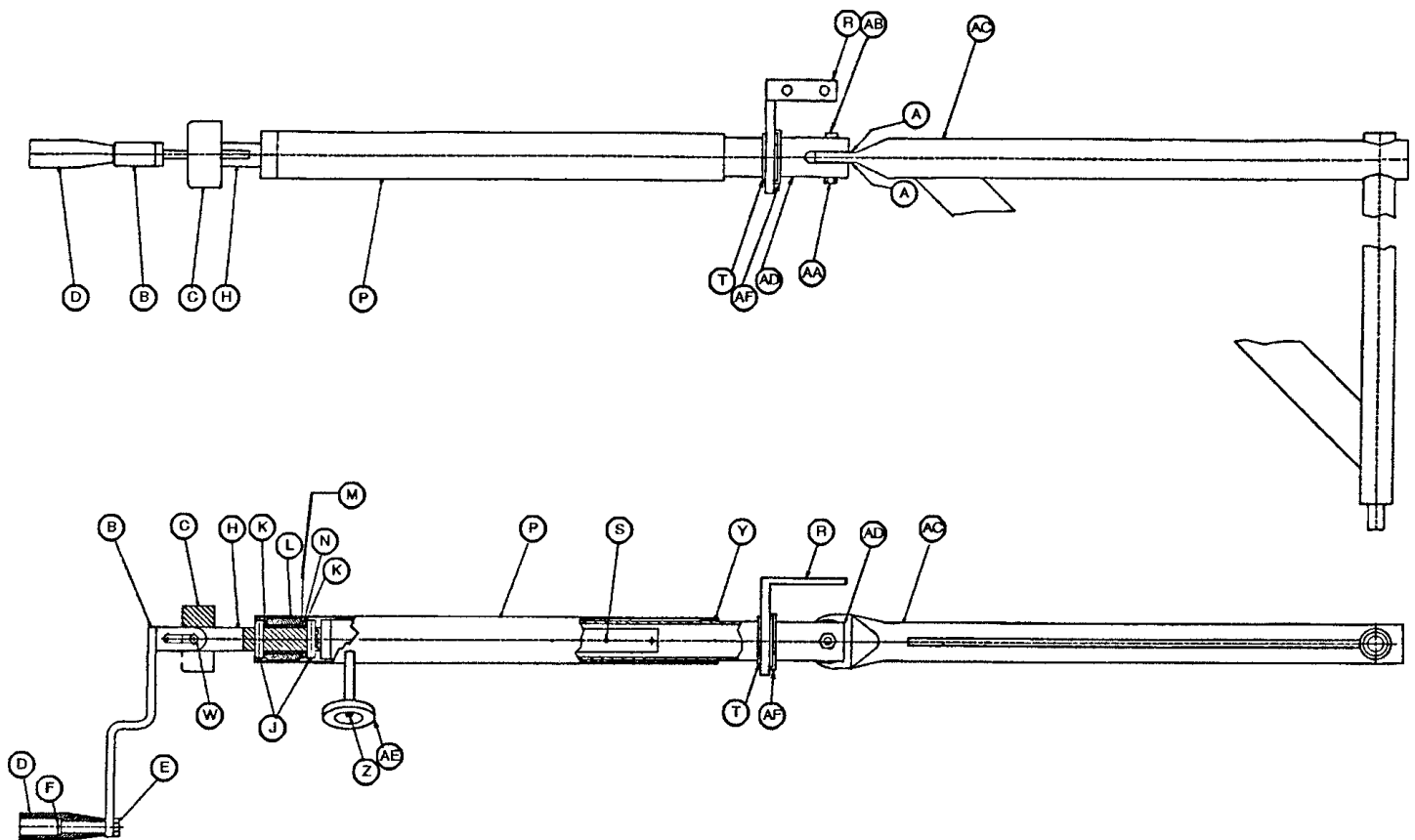
1066-33-7 Crank Fowler Subassembly



1066-33-7 Crank Fowler Subassembly

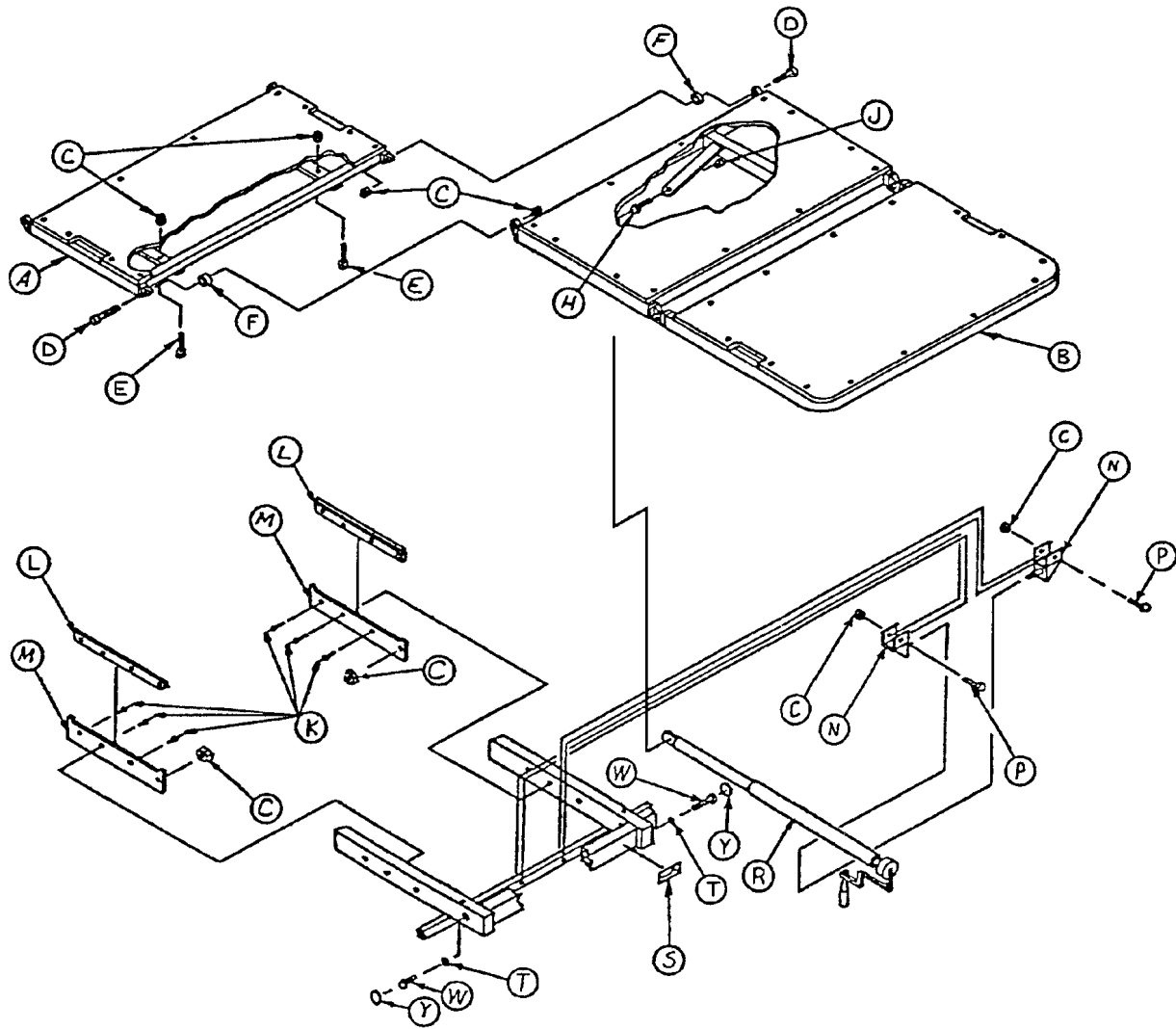
Item	Part No.	Part Name	Qty.
A	1066-33-4	Fowler Skin	1
B	1066-33-61	Head Piece Skin	1
C	1066-33-20	Crank Fowler Weldment	1
D	25-103	Pop Rivet	21
E	1066-33-69	Pivot	4
F	11-1	Washer	5
H	25-50	Pop Rivet	4
J	1066-33-63	Bellows	2
K	1066-33-50	Cover	1
L	1066-33-60	Right Angle Gear Drive	2
M	1010-32-66	End Plug	4
N	1066-75-21	Weight Label	1
P	24-41	Knob	4
R	1066-33-25	Head Piece Weldment	1
S	1066-33-58	"U" Joint	2
T	37-64	Bumper	2
W	1066-33-36	Screw Cover	1
Z	1066-33-40	Head Support Assembly	1
AA	1066-33-30	Mounting Bracket, Lift	2
AB	1066-33-48	Lift Handle Bushing	2
AC	1066-33-56	Mounting Bracket	1
AD	1066-33-45	Bearing Nut	2
AE	1066-33-47	Tilt Screw	1
AF	1066-33-46	Lift Screw	1
AH	1066-33-38	Control Rod, Tilt, Left	1
AJ	1066-33-34	Lift Control Rod	2
AK	1066-33-35	Cross Bar	1
AL	1066-33-37	Contro Rod, Tilt, Right	1
AM	1066-33-65	Flange Bearing, Short	4
AN	1066-33-64	Flange Bearing, Long	4
AP	1066-33-42	Screw Collar	2
AS	1066-33-66	Lift Screw Spacer	1
AT	1066-33-43	Screw Stop	1
AW	1066-33-57	Knob Spacer	1
BA	3-50	Hex Hd. Cap Screw	4
BB	16-28	Nylock Nut	8
BC	21-50	Set Screw	4
BD	21-20	Set Screw	6
BE	4-149	But. Hd. Cap Screw	1
BF	4-83	Hex Soc. Hd. Cap Screw	4
BH	16-3	Lock Nut	5
BJ	3-75	Hex Hd. Cap Screw	2
BK	4-29	Soc. Hd. Cap Screw	2
BL	11-64	Washer	2
BM	14-20	Plastic Washer	1
BN	37-52	Rubber Bumper	1

1066-33-19 Fowler Crankscrew Assembly



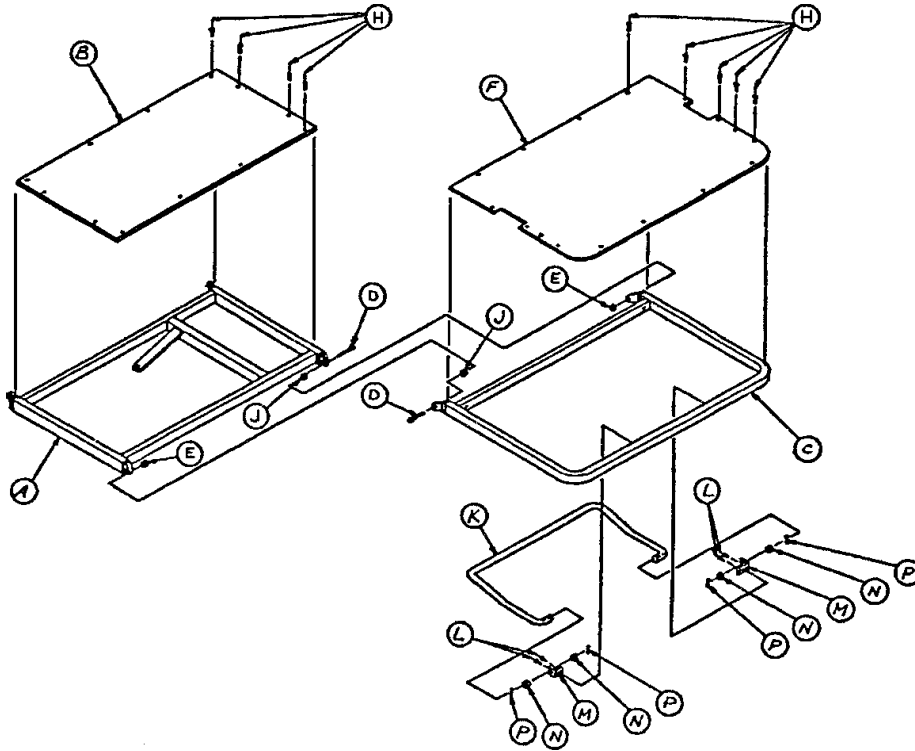
Item	Part No.	Part Name	Qty.
A	14-55	Nylon Washer	2
B	1510-34-85	Crank Assembly	1
C	946-23-18	Crank Disc	1
D	938-1-177	Knob	1
E	16-5	Conelock Nut	1
F	378-24-29	Shoulder Bolt	1
H	946-33-35	Fowler Screw	1
J	26-14	Roll Pin	2
K	81-174	Thrust Washer	2
L	938-1-175	Bearing Assembly	1
M	81-176	Thrust Washer	1
N	81-175	Thrust Bearing	1
P	1510-34-84	Screw Cover Assembly	1
R	1510-33-37	Brace	1
S	26-10	Roll Pin	1
T	1510-33-45	Slide Bearing	1
W	26-45	Roll Pin	1
Y	7900-1-102	Velcro Pile Tape	4"
Z	4-7	Soc. Hd. Cap Screw	1
AA	16-35	Nylock Hex Nut	1
AB	3-45	Hex Hd. Cap Screw	1
AC	1066-33-2	Pivot Tube Assembly	1
AD	1510-33-9	Drive Tube Assembly	1
AE	958-34-717	Magnet	1
AF	28-94	Retaining Ring	1

1066-34-70 Knee Gatch Assembly

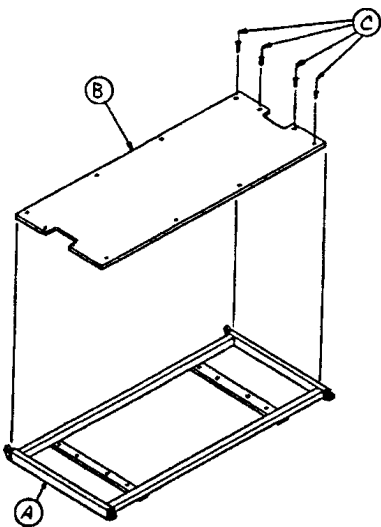


Item	Part No.	Part Name	Qty.
A	(page 54)	Midsection Preassembly	1
B	(page 54)	Foot & Thigh Preassembly	1
C	16-28	Nylock Hex Nut	12
D	1010-32-60	Pivot Bolt	4
E	3-73	Hex Hd. Cap Screw	4
F	11-179	Washer	4
H	4-105	Soc. Hd. Cap Screw	1
J	16-12	Flexlock Nut	1
K	25-79	Pop Rivet	6
L	1510-34-90	Slider Pad	2
M	1510-34-94	Calf Stand Rest	2
N	1010-34-15	Mounting Bracket Assembly	2
P	3-78	Hex. Hd. Cap Screw	2
R	(page 55)	Gatch Crankscrew Assembly	1
S	946-1-65	Knee Gatch Symbol Label	1
T	37-56	Retaining Washer	2
W	3-47	Hex Hd. Cap Screw	2
Y	37-55	Protective Cap	2
Z	721-31-65	Hole Plug (not shown)	16

1066-34-39 & 1066-34-57 Knee Gatch Preassemblies

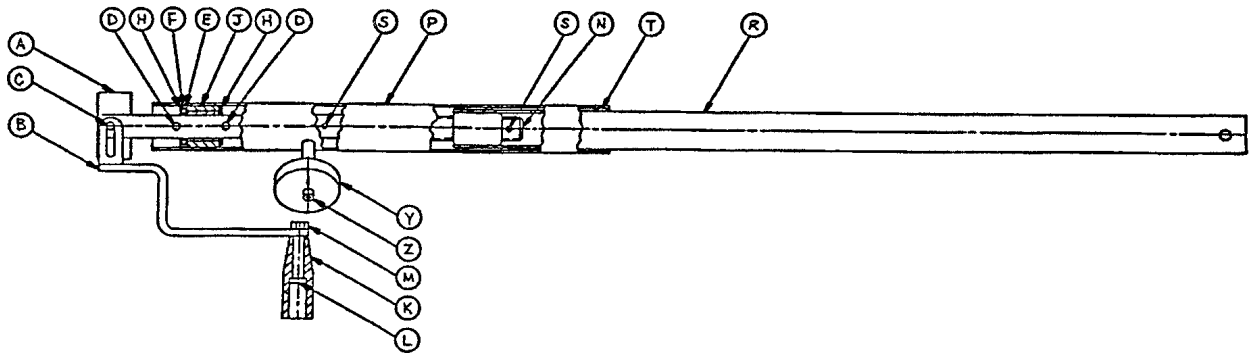
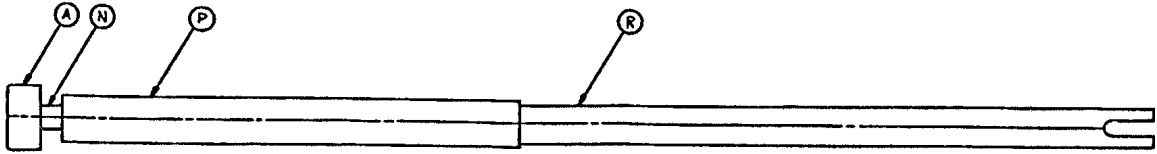


Item	Part No.	Part Name	Qty.
A	1010-34-25	Thigh Section Assembly	1
B	1066-34-59	Thigh Section Skin	1
C	1066-34-26	Foot Section Assembly	1
D	1010-32-60	Pivot Bolt	2
E	16-28	Nylock Hex Nut	2
F	1066-34-63	Calf Section Skin	1
H	25-103	Pop Rivet	28
J	11-179	Washer	2
K	1010-34-23	Calf Stand Bar	1
L	25-79	Pop Rivet	4
M	1510-34-88	Calf Stand Bracket	2
N	14-21	Nylon Washer	4
P	27-7	Cotter Pin	4



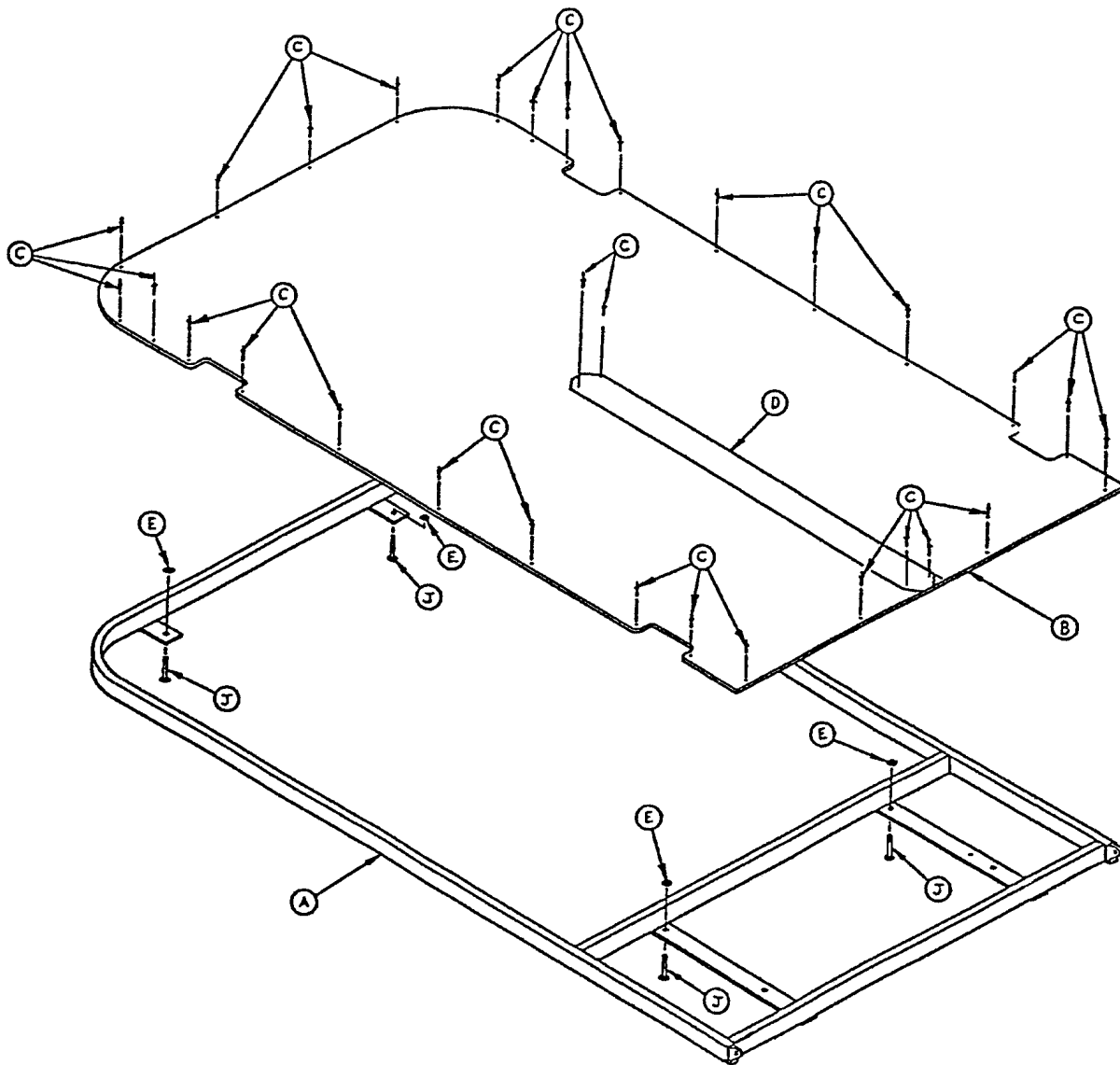
Item	Part No.	Part Name	Qty.
A	1010-34-24	Midsection Ass'y	1
B	1066-34-58	Midsection Skin	1
C	25-103	Pop Rivet	12

1066-34-13 Knee Gatch Crankscrew Assembly



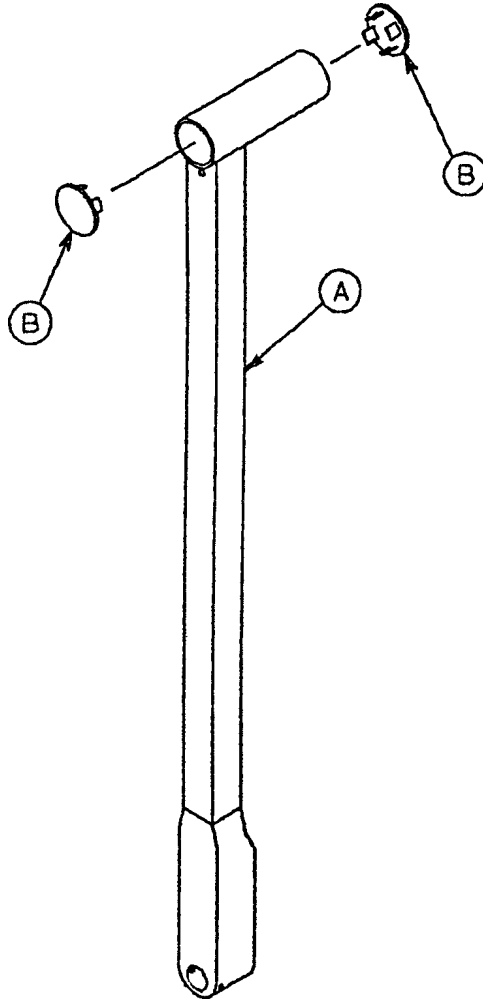
Item	Part No.	Part Name	Qty.
A	946-33-18	Crank Disc	1
B	1510-34-85	Crank Assembly	1
C	26-45	Roll Pin	1
D	26-14	Roll Pin	2
E	81-176	Thrust Washer	1
F	81-175	Thrust Bearing	1
H	81-174	Thrust Washer	2
J	938-1-175	Bearing Assembly	1
K	938-1-177	Knob	1
L	378-24-29	Shoulder Bolt	1
M	16-5	Conelock Nut	1
N	946-34-25	Gatch Screw	1
P	1510-34-84	Screw Cover Assembly	1
R	1066-34-55	Extension Tube Assembly	1
S	26-10	Roll Pin	2
T	7900-1-102	Velcro Pile Tape	1
Y	958-34-717	Magnet	1
Z	4-7	Soc. Hd. Cap Screw	1

1066-1-37 Foot Section Assembly



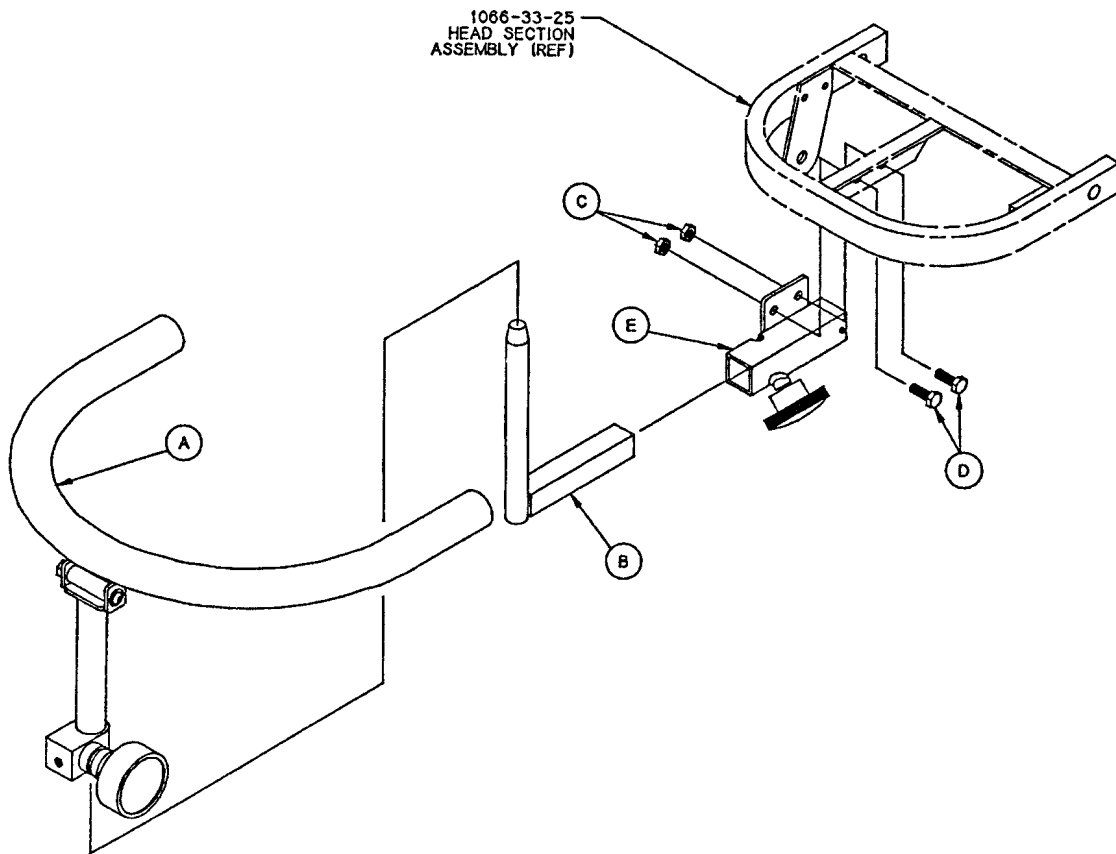
Item	Part No.	Part Name	Qty.
A	1066-1-39	Foot Section Weldment	1
B	1066-32-105	Foot Section Skin	1
C	25-103	Pop Rivet	30
D	7900-1-102	Velcro Pile Tape	24 1/2"
E	16-28	Nylock Nut	4
J	3-73	Hex Hd. Cap Screw	4
K	721-31-65	Hole Plug	2

1066-1-60 Handle Assembly



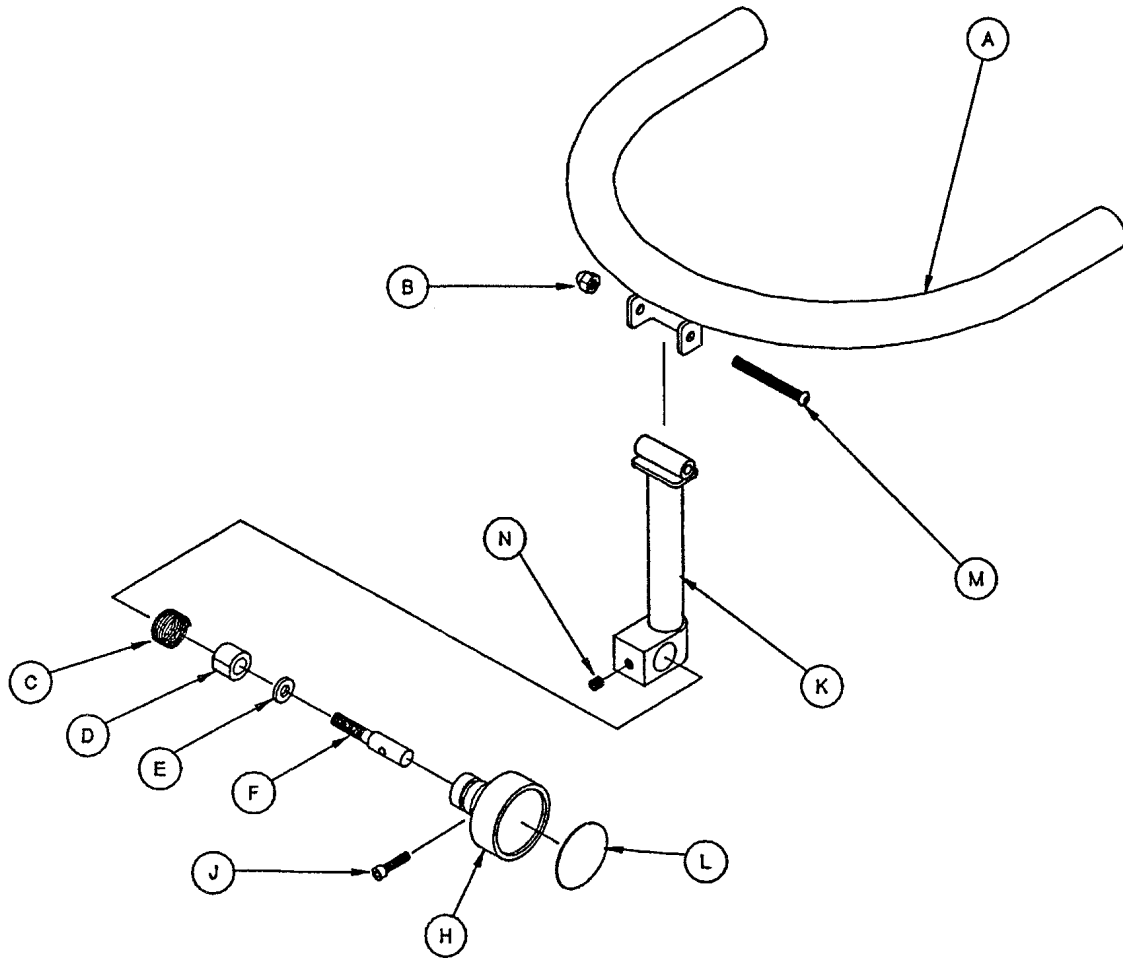
Item	Part No.	Part Name	Qty.
A	1066-1-61	Handle Weldment	1
B	37-2	Hole Plug	2

1066-70-25 Wrist Rest Assembly



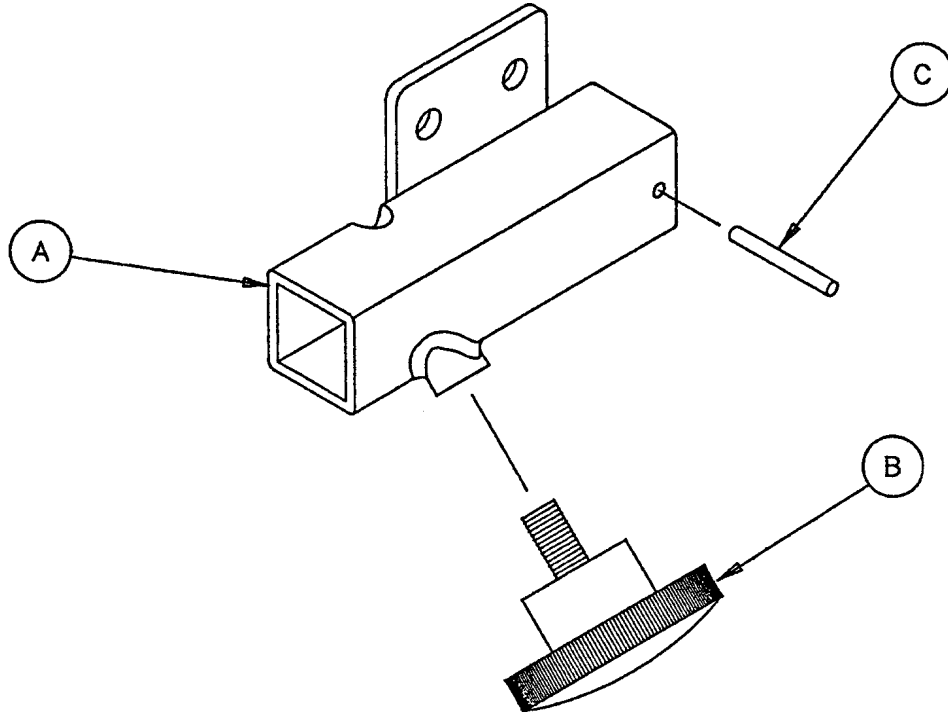
Item	Part No.	Part Name	Qty.
A	(page 59)	Upright Assembly	1
B	1066-70-33	Vertical Assembly	1
C	16-28	Lock Nut	2
D	3-50	Hex Hd. Cap Screw	2
E	(page 60)	Knob Assembly	1

1066-70-22 Upright Assembly



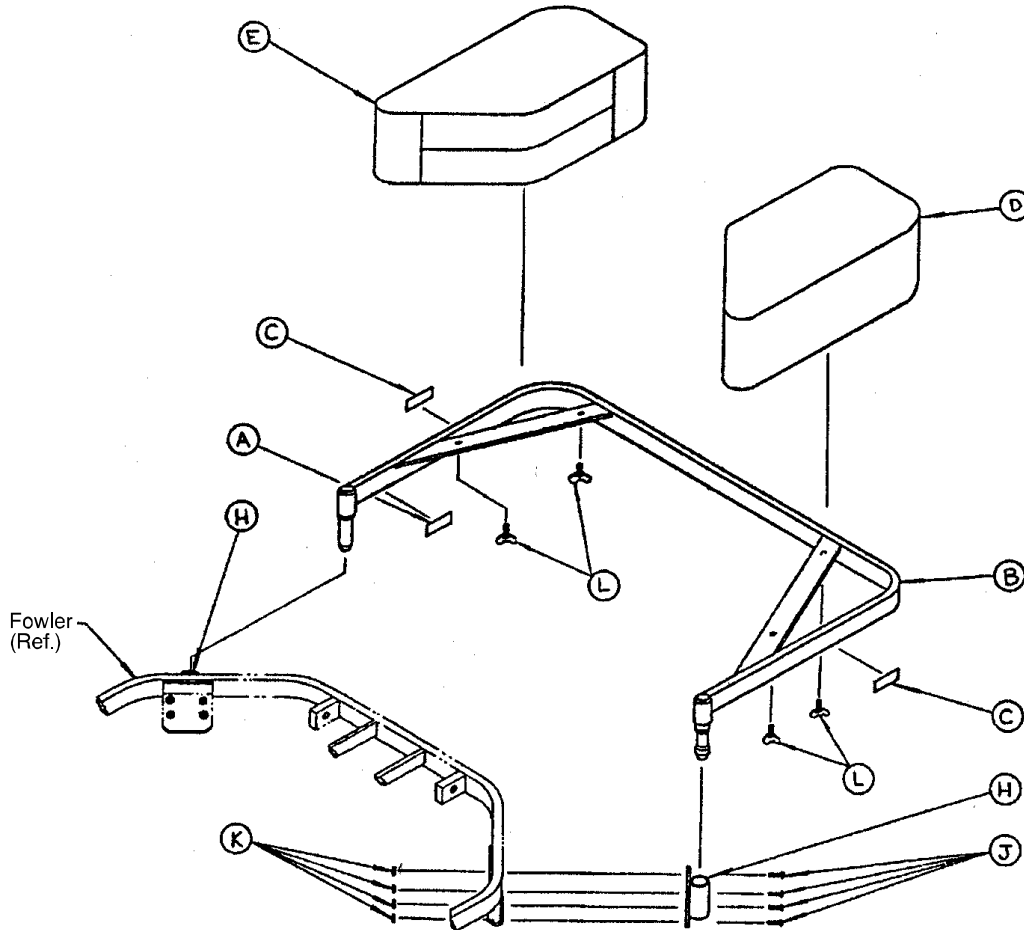
Item	Part No.	Part Name	Qty.
A	1066-70-13	Tube Assembly	1
B	17-4	Acorn Nut	1
C	38-171	Compression Spring	1
D	966-51-19	Wedge Lock, Modified	1
E	11-108	Washer	1
F	966-51-18	Shaft	1
H	966-51-24	Knob Assembly, Modified	1
J	4-66	Soc. Hd. Cap Screw	1
K	1066-70-17	Support Assembly	1
L	966-1-65	Label	1
M	4-97	But. Hd. Cap Screw	1
N	21-73	Set Screw	1
P	1066-70-20	Specification Label	1

1066-70-24 Knob Assembly



Item	Part No.	Part Name	Qty.
A	1066-70-34	Extension Tube Assembly	1
B	24-11	Knob	1
C	26-7	Roll Pin	1

Pre-Op/Post-Op Head Addition Assembly

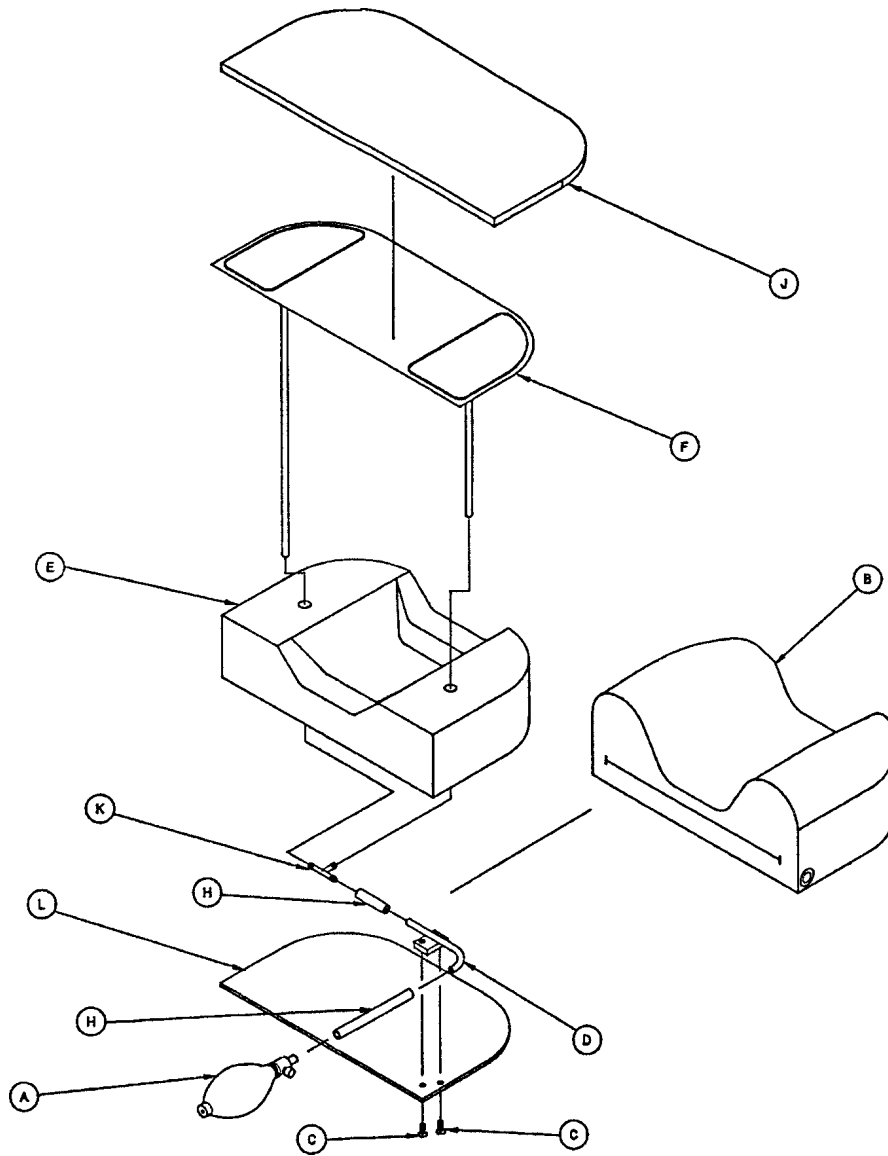


1066-75-11 (3")

1066-77-23 (4")

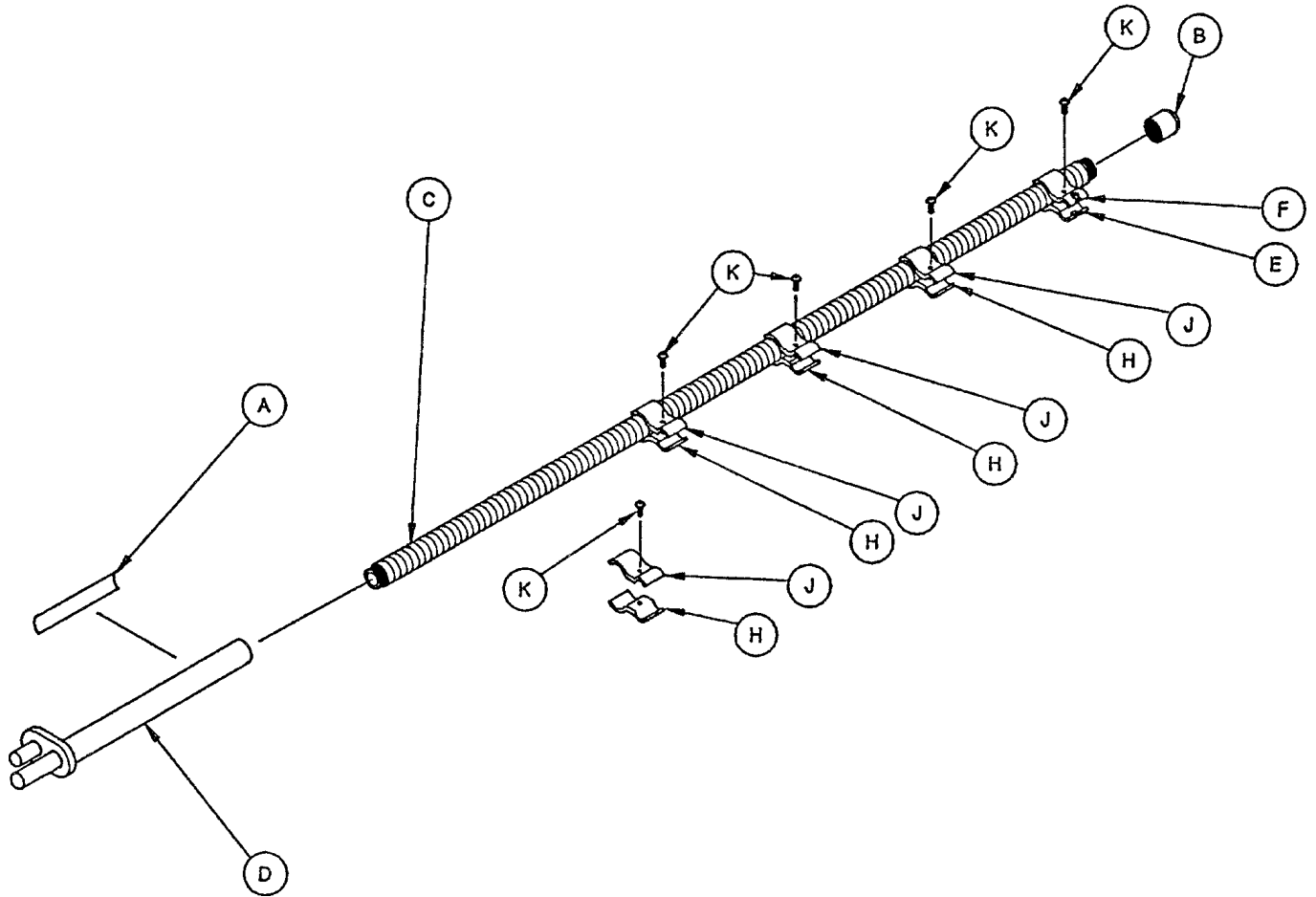
Item	Part No.	Part Name	Qty.	Item	Part No.	Part Name	Qty.
A	1066-75-20	Specification Label	1	A	1066-77-10	Specification Label	1
B	1066-75-19	Frame Weldment	1	B	1066-75-19	Frame Weldment	1
C	1066-75-21	Weight Label	2	C	1066-75-21	Weight Label	2
D	1066-75-12	Arm Pad Assembly, Lt.	1	D	1066-77-20	Arm Pad Assembly, Lt.	1
E	1066-75-13	Arm Pad Assembly, Rt.	1	E	1066-77-15	Arm Pad Assembly, Rt.	1
H	1066-75-38	Receptacle Assembl	2	H	1066-75-38	Receptacle Assembl	2
J	4-161	But. Hd. Cap Screw	8	J	4-161	But. Hd. Cap Screw	8
K	16-28	Nylock Nut	8	K	16-28	Nylock Nut	8
L	19-8	Wing Screw	4	L	19-8	Wing Screw	4

1066-82-19 Inflatable Air System Head Pad



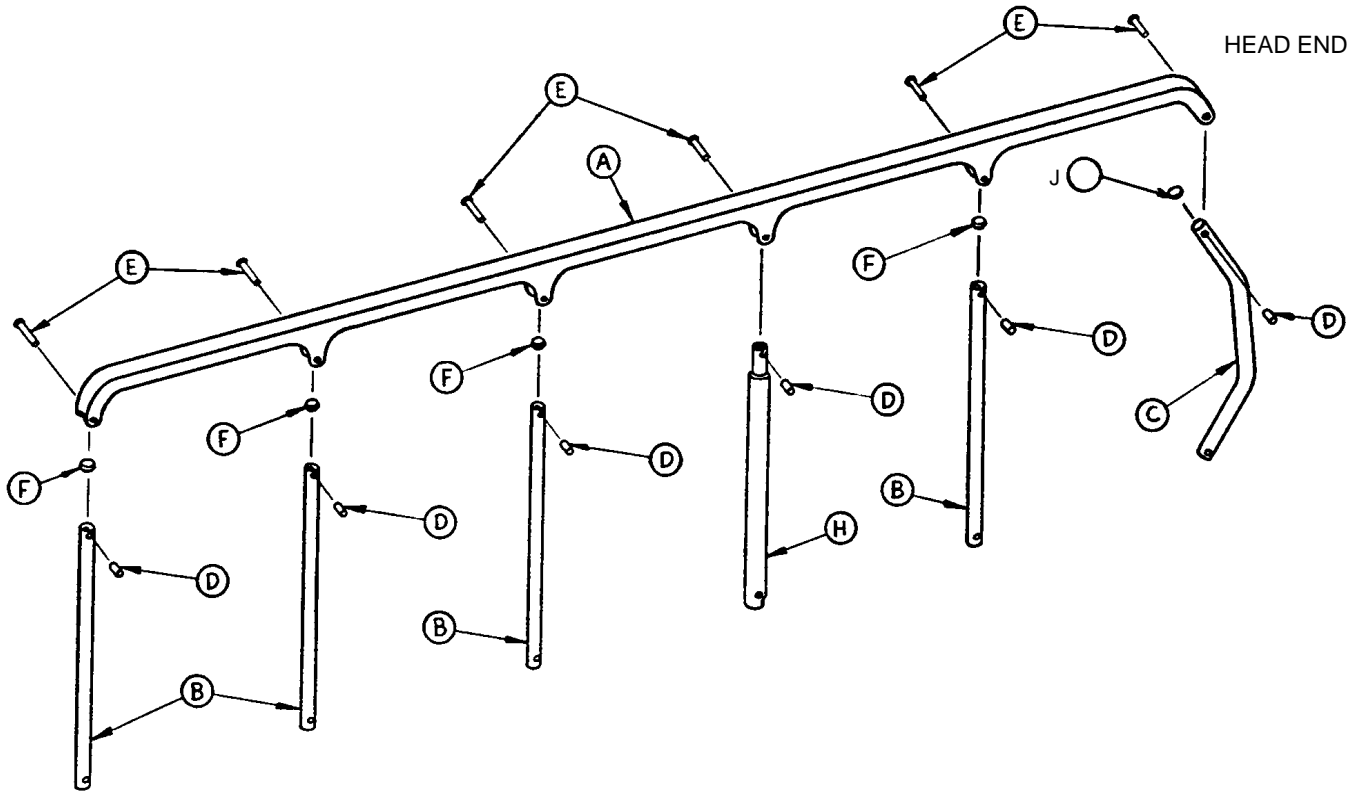
Item	Part No.	Part Name	Qty.
A	1066-82-20	Latex Bulb	1
B	1066-82-9	Cover Assembly	1
C	1-10	Flat Head Screw	2
D	1066-82-16	Air Conduit Assembly	1
E	1066-82-13	Bottom Foam	1
F	1066-82-14	Bladder	1
H	1066-82-21	Connector	2
J	1066-82-12	Top Foam	1
K	1066-82-22	"T" Connector	1
L	1066-82-15	Head Piece Base	1

1066-85-10 Sheet Support Assembly



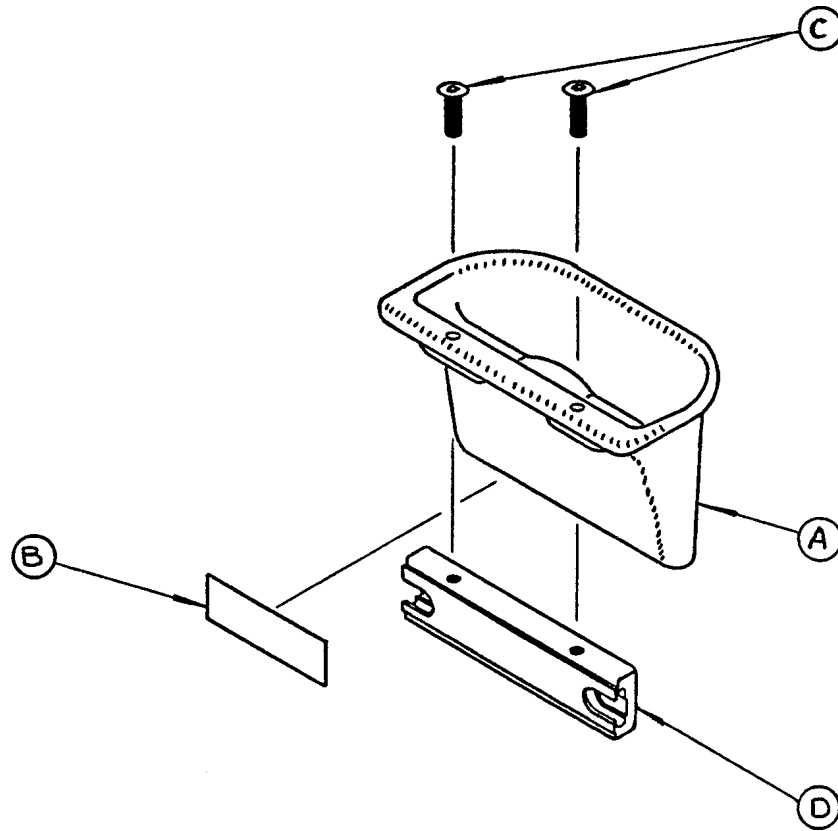
Item	Part No.	Part Name	Qty.
A	1066-85-20	Specification Label	1
B	1066-85-12	Cap	1
C	1066-85-13	Goose Neck	1
D	1066-85-15	Insert Assembly	1
E	1066-85-24	Directional Retainer, Bottom	1
F	1066-85-23	Directional Retainer, Top	1
H	1066-85-22	Linear Retainer, Bottom	4
J	1066-85-21	Linear Retainer, Top	4
K	4-167	Screw	5

1066-26-15 & 1066-26-17 Siderail Ass'y, Right & Left



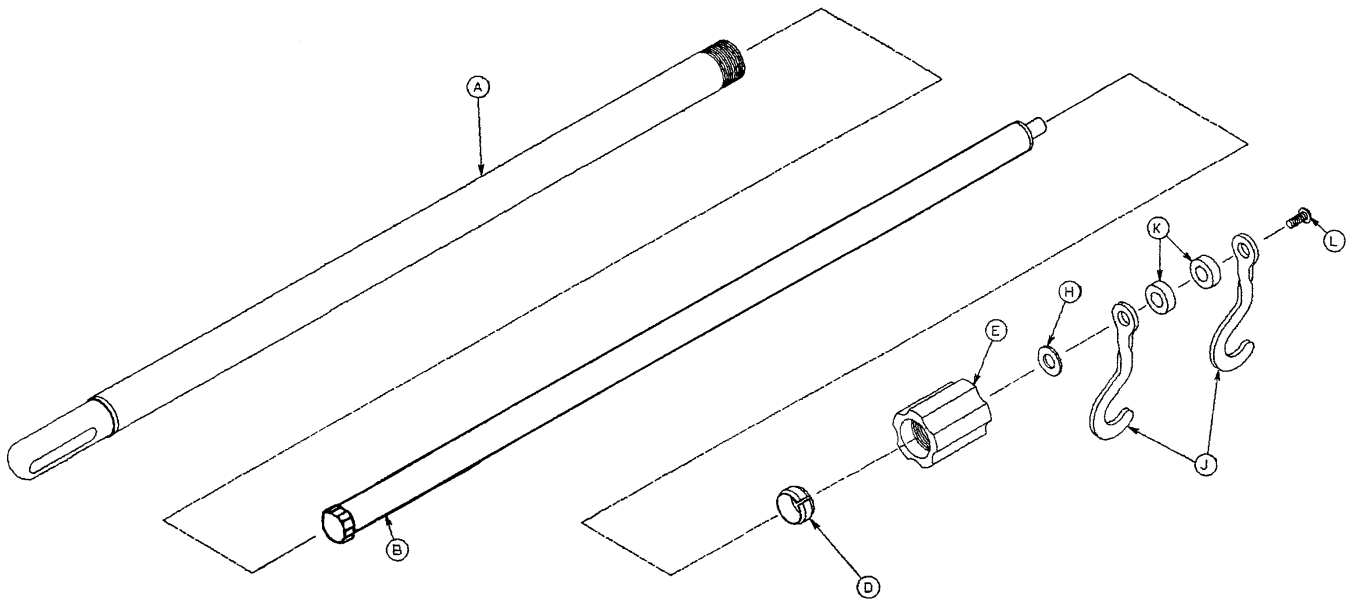
Item	Part No.	Part Name	Qty.
A	1010-26-15	Top Rail	1
B	1010-26-34	Upright	4
C	1010-26-36	Upright, Bent	1
D	1010-26-66	Sleeve Bearing	6
E	25-106	Semi-Tubular Rivet	6
F	721-26-84	Round Hole Plug	4
H	1066-26-25	Latch Upright	1
J	1010-26-12	Bent Spindle Rest	1

1066-87-16 Drainage Pan Assembly



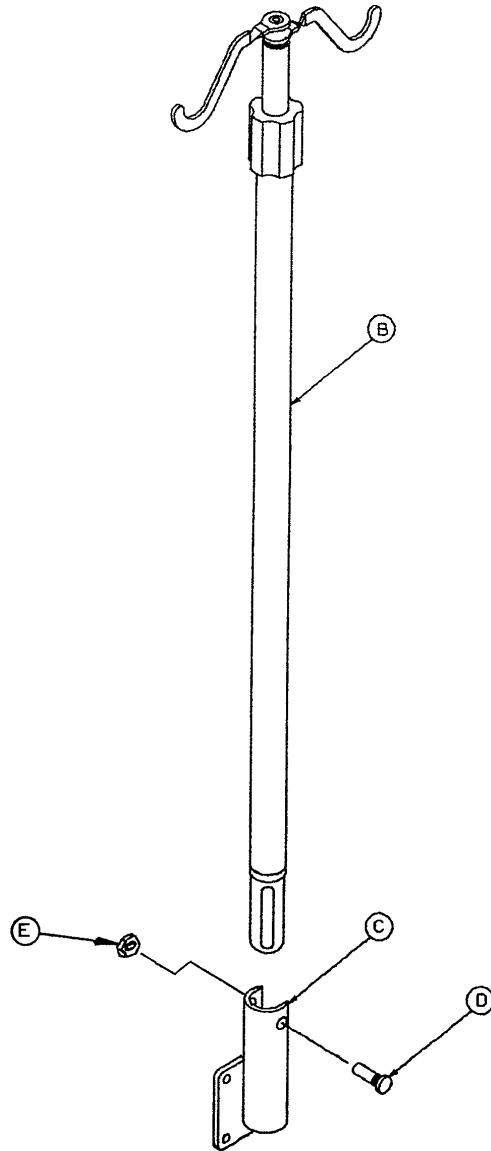
Item	Part No.	Part Name	Qty.
A	1066-87-15	Drainage Pan	1
B	1066-87-20	Specification Label	1
C	4-169	Button Hd. Cap Screw	2
D	1066-87-17	Drainage Support	1

1010-59-10 Permanent I.V. Pole Assembly



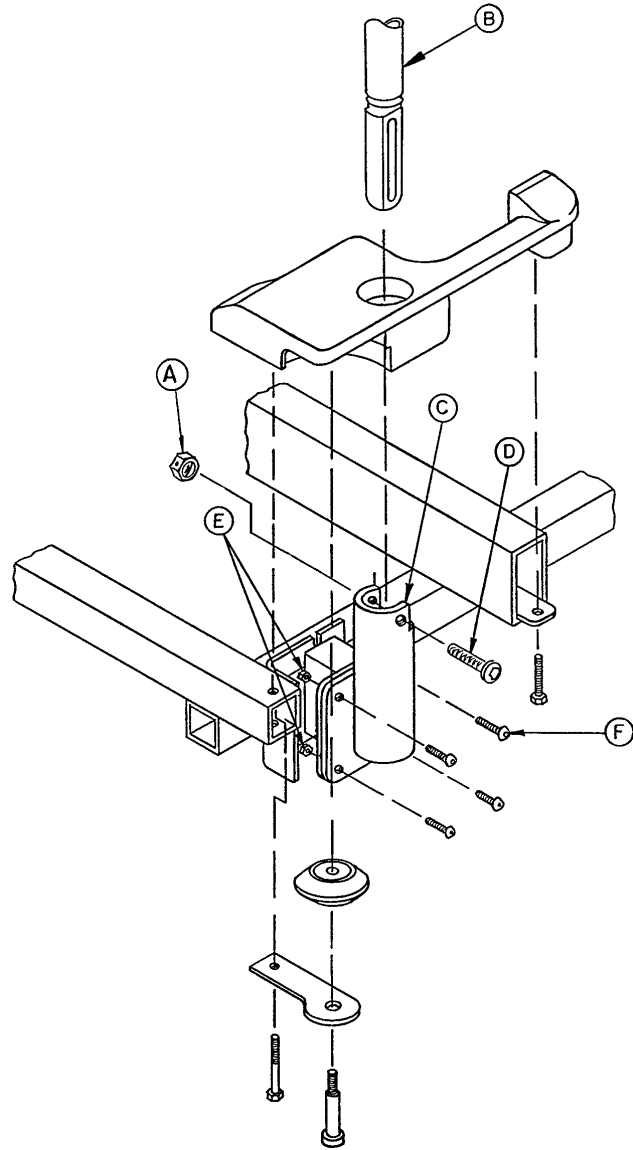
Item	Part No.	Part Name	Qty.
A	1010-59-24	Base Tube Ass'y	1
B	1010-59-30	Exten. Tube Ass'y	1
D	1001-59-47	Lock Ring	1
E	1001-59-46	Lock Actuator	1
H	14-20	Nylon Flat Washer	As Req'd
J	1010-59-16	I.V. Hook	2
K	52-17	Nylon Spacer	2
L	7-4	Truss Hd. Mach. Scr.	1

1010-80 Permanent I.V. Pole Mounting Assembly



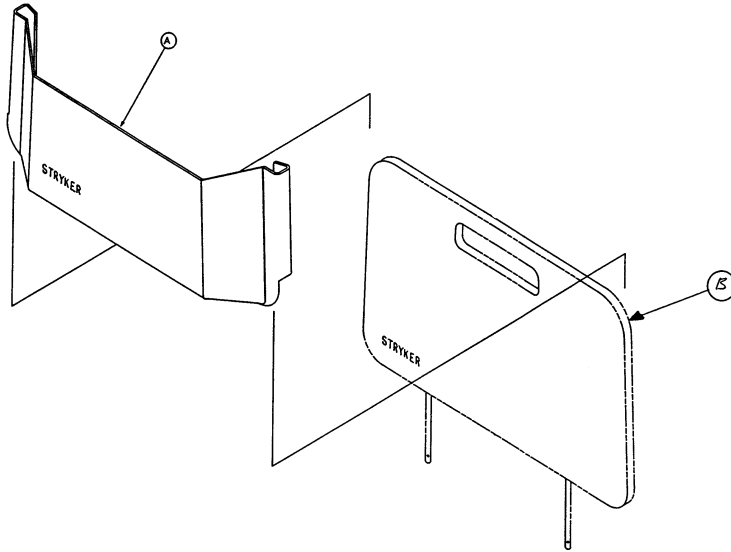
Item	Part No.	Part Name	Qty.
B	(Page 66)	I.V. Pole Ass'y	1
C	1001-259-11	I V. Socket Ass'y	1
D	4-91	But. Hd. Cap Screw	1
E	16-20	Self-Locking Nut	1
F	1001-59-42	I.V. Plug	1

1010-80-100 Replacement Permanent I.V. Pole Ass'y



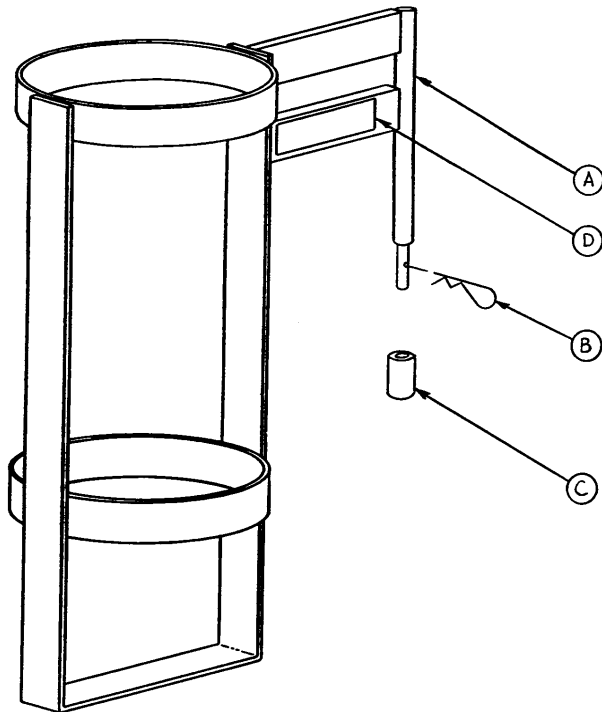
Item	Part No.	Part Name	Qty.
A	16-20	Self-Locking Nut	1
B	(Page 66)	I.V. Pole Ass'y	1
C	1001-259-11	Socket Ass'y	1
D	4-91	But. Hd. Cap Screw	1
E	16-28	Nylock Hex Nut	4
F	4-161	Button Hd. Cap Screw	4
J	1001-59-42	I.V. Plug	1

741-34* Footboard/Chartholder & 1010-30 Bottle Holder Ass'y



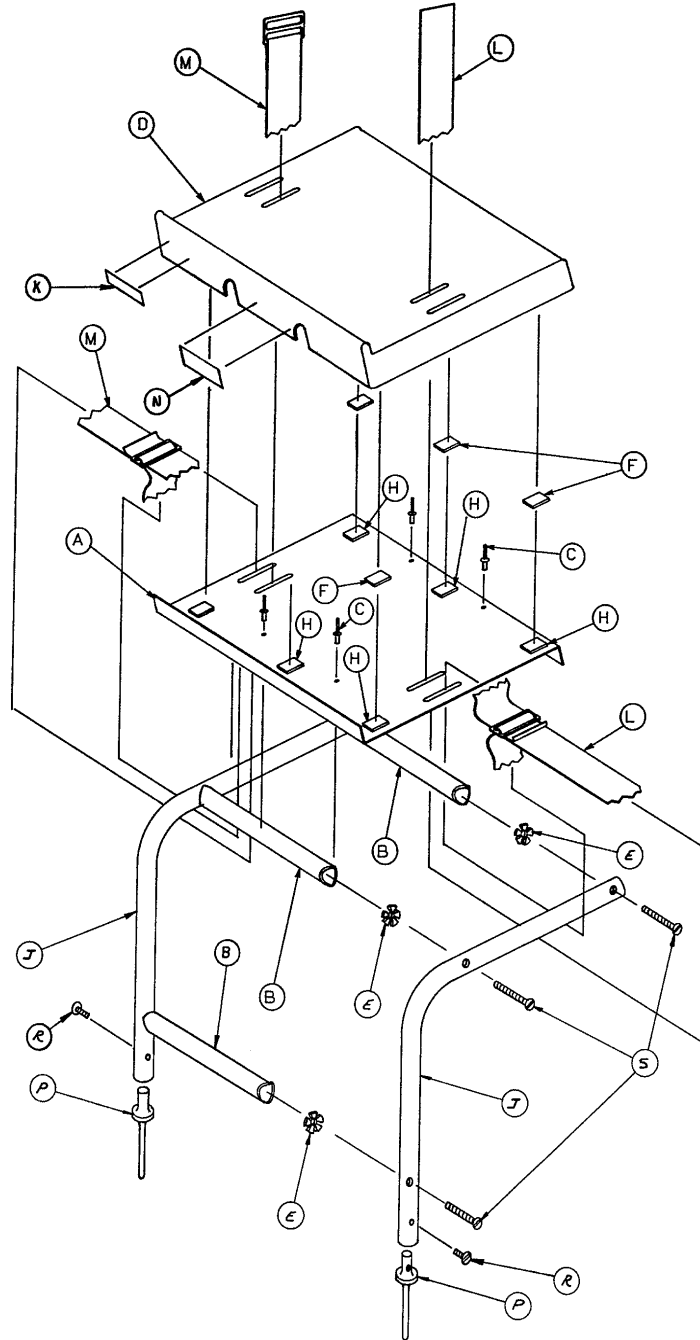
Item	Part No.	Part Name	Qty.
A	946-28-11	Chart Holder	1
B	741-29-18	Head/Foot Board	1

*Replacement Part Number 741-34-100



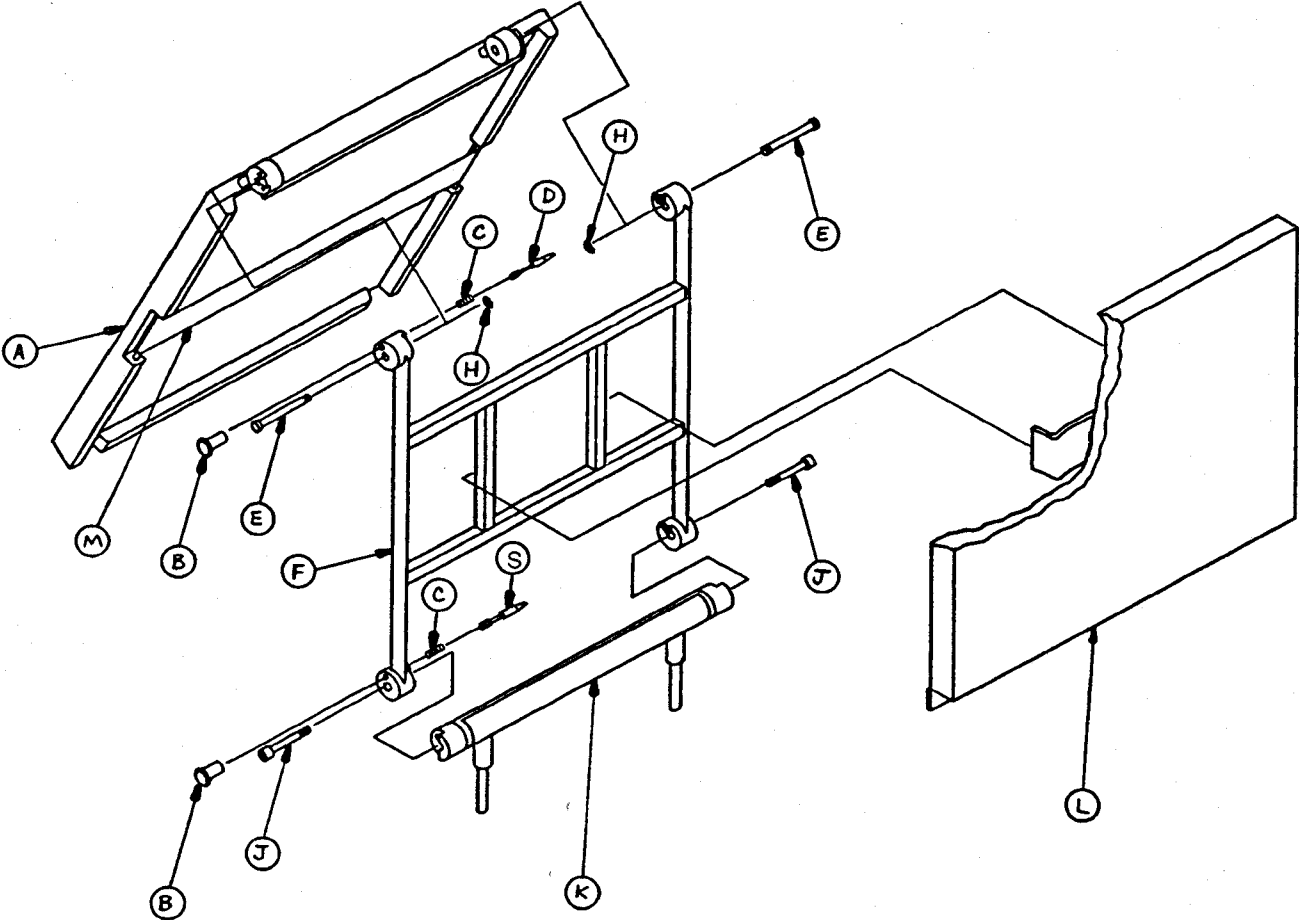
Item	Part No.	Part Name	Qty.
A	1010-30-11	Upright Bottle Holder	1
B	27-12	Cotter Pin	1
C	741-30-24	Nylon Stand-Off	1
D	1010-30-17	Spec. Label	1

741-48-14 Defibrillator Tray Assembly



Item	Part No.	Part Name	Qty.	Item	Part No.	Part Name	Qty.
A	946-39-4	Tray	1	K	741-48-12	Label	1
B	926-39-16	Crosstube	3	L	390-57-12	Long Strap	1
C	25-55	Rivet	4	M	390-57-13	Short Strap	1
D	926-39-9	Cover	1	N	946-1-283	Label	1
E	18-6	Umbrella Nut	6	P	741-48-20	Holder	2
F	29-8	Dual Lock	6	R	2-44	Screw	2
H	29-10	Dual Lock	6	S	2-25	Rd. Hd. Mach. Screw	6
J	946-39-3	Support Tube	2				

1010-50-10 Foot Extension/Defibrillator Tray Ass'y



Warranty

Limited Warranty:

Stryker Medical Division, a division of Stryker Corporation, warrants to the original purchaser that its products should be free from defects in material and workmanship for a period of one (1) year after date of delivery. Stryker's obligation under this warranty is expressly limited to supplying replacement parts and labor for, or replacing, at its option, any product which is, in the sole discretion of Stryker, found to be defective. Stryker warrants to the original purchaser that the frame and welds on its beds will be free from structural defects for as long as the original purchaser owns the bed. If requested by Stryker, products or parts for which a warranty claim is made shall be returned prepaid to Stryker's factory. Any improper use or any alteration or repair by others in such manner as in Stryker's judgement affects the product materially and adversely shall void this warranty. No employee or representative of Stryker is authorized to change this warranty in any way.

This statement constitutes Stryker's entire warranty with respect to the aforesaid equipment. STRYKER MAKES NO OTHER WARRANTY OR REPRESENTATION, EITHER EXPRESSED OR IMPLIED, EXCEPT AS SET FORTH HEREIN. THERE IS NO WARRANTY OF MERCHANTABILITY AND THERE ARE NO WARRANTIES OF FITNESS FOR ANY PARTICULAR PURPOSE. IN NO EVENT SHALL STRYKER BE LIABLE HEREUNDER FOR INCIDENTAL OR CONSEQUENTIAL DAMAGES ARISING FROM OR IN ANY MANNER RELATED TO SALES OR USE OF ANY SUCH EQUIPMENT.

To Obtain Parts and Service:

Stryker products are supported by a nationwide network of dedicated Stryker Field Service Representatives. These representatives are factory trained, available locally, and carry a substantial spare parts inventory to minimize repair time. Simply call your local representative, or call Stryker Customer Service at (800) 327-0770.

Supplemental Warranty Coverage:

Stryker has developed a comprehensive program of extended warranty options designed to keep your equipment operating at peak performance at the same time it eliminates unexpected costs. We recommend that these programs be activated *before* the expiration of the new product warranty to eliminate the potential of additional equipment upgrade charges. Stryker offers the following Supplemental Warranties:

Extended (Parts and Labor)

- All replacement parts (excluding mattresses and consumable items)
- Labor and travel for *all* scheduled and unscheduled calls
- Annual Preventive Maintenance Inspections and repairs
- JCAHO paperwork for preventive maintenance
- Priority Emergency Service

Standard (Labor Only):

- Labor and travel for *all* scheduled and unscheduled calls
- Biannual Preventive Maintenance Inspections and repairs
- JCAHO paperwork for preventive maintenance
- Priority Emergency Service

Basic (Parts Only):

- All replacement parts (excluding mattresses and consumable items)
- Priority Emergency Service

Please call your local representative, or call (800) 327-0770 for further information

Warranty

Return Authorization:

Merchandise cannot be returned without approval from the Stryker Customer Service Department. An authorization number will be provided which must be printed on the returned merchandise. Stryker reserves the right to charge shipping and restocking fees on returned items.

SPECIAL, MODIFIED, OR DISCONTINUED ITEMS NOT SUBJECT TO RETURN.

Damaged Merchandise:

ICC Regulations require that claims for damaged merchandise must be made with the carrier within fifteen (15) days of receipt of merchandise. **DO NOT ACCEPT DAMAGED SHIPMENTS UNLESS SUCH DAMAGE IS NOTED ON THE DELIVERY RECEIPT AT THE TIME OF RECEIPT.** Upon prompt notification, Stryker will file a freight claim with the appropriate carrier for damages incurred. Claim will be limited in amount to the actual replacement cost. In the event that this information is not received by Stryker within the fifteen (15) day period following the delivery of the merchandise, or the damage was not noted on the delivery receipt at the time of receipt, the customer will be responsible for payment of the original invoice in full.

Claims for any short shipment must be made within thirty (30) days of invoice.



6300 Sprinkle Road, Kalamazoo, MI 49001-9799

(800) 327-0770

DH 5/92 1066-32-34 REV A