

KAPADO and KAPADO-X Series Stretcher

Maintenance Manual

REF 6350



Table of Contents

Warning/Caution/Note Definition	3
Summary of safety precautions	4
Pinch points.....	4
Introduction for service	5
Expected service life	5
Contact information.....	5
Serial number location.....	6
Preventive maintenance	7
Retractable fifth wheel lubrication.....	9
Quick reference replacement parts	10
Service	20
Raising the hood.....	20
Replacing the hood	20
Caster assembly replacement.....	21
Brake rod replacement	22
Fifth wheel assembly replacement.....	23
Jack replacement.....	24
Remove excess air from the hydraulic system	26
Pump pedal replacement.....	26
Release pedal adjustment	27
Release pedal replacement	28
Litter top removal	29
Siderail latch replacement.....	30
X-ray cassette panel replacement - head end, KAPADO-X option.....	31
X-ray cassette panel replacement - foot end, KAPADO-X option.....	32
Fowler gas cylinder replacement, KAPADO-X option	33
Base assembly	35
Brake rod assembly - YM-660-320	41
Fifth wheel assembly - YM-660-123	42
Lowering pedal assembly - YM-660-315.....	44
Pump pedal assembly - YM-660-037	45
Litter frame assembly, ST1-X option	46
Litter mattress hook	47
Litter assembly, KAPADO-X option	48
Fowler assembly, KAPADO-X option	50
Profile cap and Fowler guide part assembly, ST1-X option	51
Left siderail assembly, ST1-X option - YM-500-002.....	52
Right siderail assembly, ST1-X option - YM-500-003	54
Left siderail latch assembly - YM-500-008	55
Right siderail latch assembly - YM-500-012.....	56
Left spindle assembly - YM-500-006	57
Right spindle assembly - YM-500-010.....	58
Left latch spindle assembly - YM-500-007	59
Right latch spindle assembly - YM-500-009.....	60
Corner cover assembly.....	61
Covers assembly, no options, head end	63
Covers assembly with IV pole and pop-up push handles, head end	64
Defibrillator tray assembly	65

Two-stage IV pole assembly66
Three-stage IV pole assembly.....67
Push handle assembly, head end68
ST1 basic mattress 8 cm - 6300-0-100.....69
ST1 basic mattress 10 cm - 6300-0-10270
ST1 mattress with flame barrier 8 cm - 6300-0-10371
ST1 mattress with flame barrier 10 cm - 6300-0-10472

Warning/Caution/Note Definition

The words **WARNING**, **CAUTION**, and **NOTE** carry special meanings and should be carefully reviewed.

WARNING

Alerts the reader about a situation which, if not avoided, could result in death or serious injury. It may also describe potential serious adverse reactions and safety hazards.

CAUTION

Alerts the reader of a potentially hazardous situation which, if not avoided, may result in minor or moderate injury to the user or patient or damage to the product or other property. This includes special care necessary for the safe and effective use of the device and the care necessary to avoid damage to a device that may occur as a result of use or misuse.

Note - Provides special information to make maintenance easier or important instructions clearer.

Summary of safety precautions

Always read and strictly follow the warnings and cautions listed on this page. Service only by qualified personnel.

CAUTION

- Improper usage of the product can cause injury to the patient or operator. Operate the product only as described in this manual.
- Do not modify the product or any components of the product. Modifying the product can cause unpredictable operation resulting in injury to patient or operator. Modifying the product also voids its warranty.

Pinch points

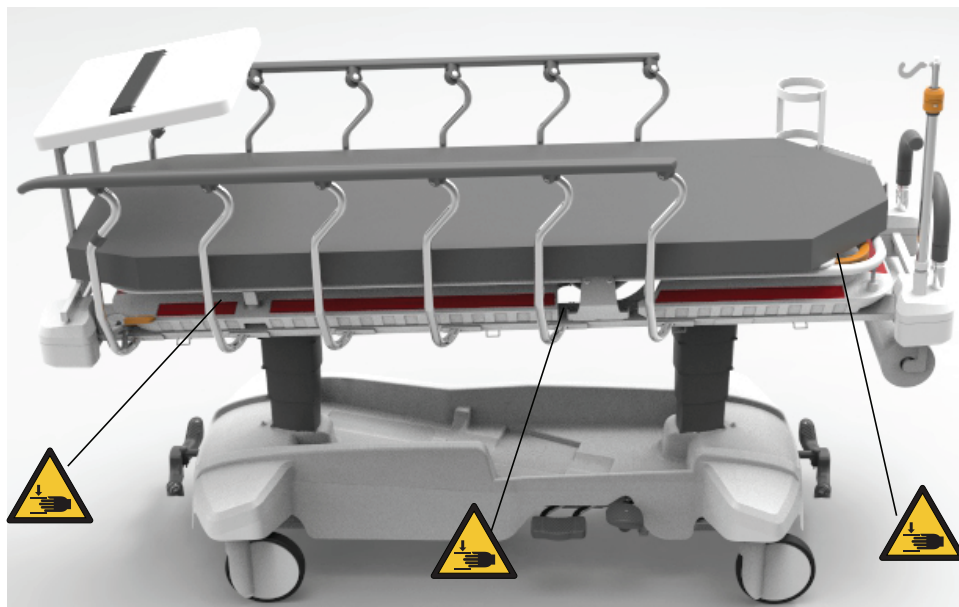


Figure 1 – Pinch points for X-ray option only

Introduction for service

This manual assists you with the service of your Stryker product. Read this manual to service this product. This manual does not address the operation of this product. See the Operations Manual for operating and use instructions. To view your Operations Manual online, see <https://techweb.stryker.com/>.

Expected service life

The **KAPADO** and **KAPADO-X** Series stretcher with X-ray deck option has a 10 year expected service life under normal use, conditions, and with appropriate periodic maintenance.

The casters have a minimum expected service life of 5 years dependent on normal use, conditions, and with appropriate periodic maintenance.

Contact information

Contact Stryker Customer Service or Technical Support at: +1 800-327-0770.

Stryker Medical International

Kayseri Serbest Bölge Şubesi

2. Cad. No:17 38070

Kayseri, Turkey

Email: infosmi@stryker.com

Phone: + 90 (352) 321 43 00 (pbx)

Fax: + 90 (352) 321 43 03

Web: www.stryker.com

To view your operations or maintenance manual online, see <https://techweb.stryker.com/>.

Have the serial number (A) of your Stryker product available when calling Stryker Customer Service or Technical Support. Include the serial number in all written communication.

Serial number location



Figure 2 – Serial number location

Preventive maintenance

WARNING - Always inspect the mattress each time you clean the mattress cover. Follow your hospital protocols and complete preventive maintenance each time you clean the mattress cover. If compromised, remove the mattress from use and replace the product to prevent cross-contamination.

Remove product from service before you perform the preventive maintenance inspection. Check all items listed during annual preventive maintenance for all Stryker Medical products. You may need to perform preventive maintenance checks more often based on your level of product usage. Service only by qualified personnel.

Note - Clean and disinfect the exterior of the mattress before inspection, if applicable.

Inspect the following items:

- _____ Zipper and cover (top and bottom) are free of tears, cuts, or holes
- _____ Unzip the cover to check internal components for signs of stains from fluid ingress or contamination
- _____ Foam and other components have not degraded or come apart
- _____ All welds
- _____ All fasteners are secure
- _____ All product labels are in place and legible
- _____ All weldments (base frame, brake, litter, jack, carriage, IV pole pivot weldment, and push handle weldments) are not damaged
- _____ Siderails move and latch
- _____ Siderail latches are secure
- _____ Siderail is not damaged
- _____ Siderail latch is not damaged, no burrs or debris in latch assembly
- _____ Antistatic caster is not worn or damaged
- _____ Casters lock with brake pedal applied
- _____ Casters are secure and swivel
- _____ Casters are free of wax and debris
- _____ Casters are not worn or damaged
- _____ Caster mounting joint is not damaged
- _____ Casters, brake mechanism, and brake rod are not damaged or cracked
- _____ Fowler raises, lowers, and latches in place
- _____ Fowler does not drift or drop unexpectedly
- _____ No leaks at the Fowler backrest cylinders
- _____ Fowler gas cylinder pin is not stuck
- _____ Brake/steer pedals are not bent or damaged
- _____ Brake mechanism works
- _____ Steer function works
- _____ Fifth wheel is not worn or damaged and works
- _____ Fifth wheel linkage is not bent or overtraveled
- _____ No debris or wax buildup in fifth wheel
- _____ Carriage bolt is secure
- _____ Base frame is not damaged
- _____ Pump pedal is not loose, worn, or damaged

- _____ Hydraulic release pedals are not loose or damaged
- _____ Jack release valve is free of dust, debris, does not stick
- _____ Jack linkages are not out of adjustment or damaged
- _____ Jack adjustment valves and spring work
- _____ Jacks are not damaged
- _____ Head end and foot end jacks raise and lower at the same time
- _____ Litter raises and lowers from all locations
- _____ Litter components are in place and not damaged (fastener, holding pin, pin, bushing not backing out, loose, worn out, or damaged)
- _____ Trendelenburg/Reverse Trendelenburg operates from all locations
- _____ Check skins for cracks
- _____ Hook and loop fastener is in place, intact, and secure
- _____ Fowler raises, lowers, and latches in place
- _____ Fowler subsystem (handle, wire, base weldment, cylinder, fasteners, etc.) are not damaged
- _____ Hydraulic jacks are holding
- _____ No interference between wire and mechanical components on the Fowler backrest
- _____ No leaks at hydraulic connections
- _____ Lubricate where required
- _____ Push handles are not loose or damaged
- _____ Body restraints latch and are secure (optional)
- _____ IV pole is intact, is not damaged, and adjusts and latches in all positions (optional)
- _____ Oxygen bottle holder is intact and opens and closes (optional)
- _____ No rips or cracks in the mattress cover
- _____ Accessories and mounting hardware are in good condition

Product serial number:
Completed by:
Date:

Retractable fifth wheel lubrication

Tools required:

- MPG-3 grease
- Bungee cords

Procedure:

1. Raise the product to the highest position.

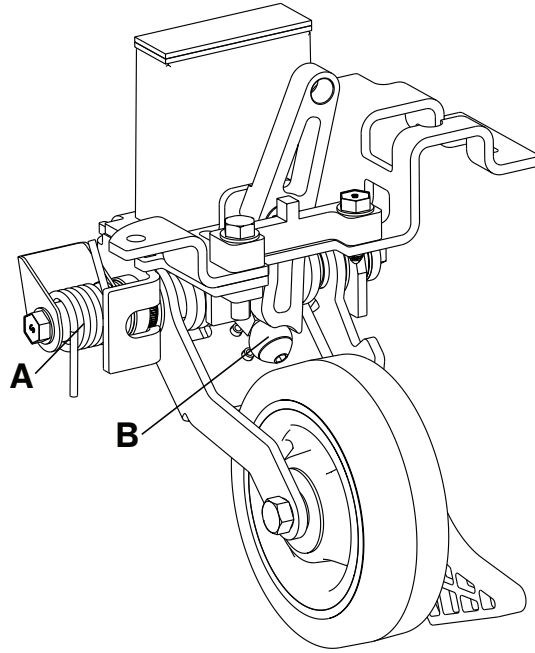


Figure 3 – Retractable fifth wheel lubrication

2. Raise the base hood and support the hood with bungee cords.
3. Apply MPG-3 grease to the spring (A) and roller (B) (Figure 3).
4. Remove the bungee cords and lower the hood.
5. Verify proper operation before you return the product to service.

Quick reference replacement parts

These parts are currently available for purchase. Call Stryker Customer Service: + 90 (352) 321 43 00 (pbx) for availability and pricing.

Kit name	Number	Kit contents		
		Number	Name	Quantity
Fifth wheel replacement kit	YM-KIT-100095	HM-05-057	M8 x 25 hexagon head flange adhesive applied bolt	3
		HM-07-06	M8 large washer - special	1
		YM-660-123	Fifth wheel assembly	1
Low mech, foot end replacement kit	YM-KIT-100096	YM-660-201	Low mech foot side wire assembly	1
		HM-16-122	Ø20 x 46 x 2 mm spring	2
		HM-11-33	Ø6 rue clip	2
Low mech, head end replacement kit	YM-KIT-100097	YM-660-203	Low mech backrest side wire assembly	1
		HM-16-122	Ø20 x 46 x 2 mm spring	2
		HM-11-33	Ø6 rue clip	2
Caster replacement kit	YM-KIT-100098	HM-01-68	2046 UAX 200 R36-32S35 D RAL9003 4 x M6 Grauweiss wheel	1
		HM-06-001	M6 x 25 mushroom head square neck bolt	1
		HM-07-06	M8 large washer-special	1
		HM-07-22	M6 steel washer (small)	1
		HM-08-05	M6 fibered nut	1
		HM-08-06	M8 fibered nut	1
		HM-12-095	Stepped flange bearing	2
		HM-12-905	Flanged bronze bushing	1
		YM-660-127	Castor fixing part	1
Lowering pedal replacement kit	YM-KIT-100099	HM-12-019	Ø5,15 x Ø10 x 3,5 washer	2
		HM-09-27	Ø5 x 18 dome head rivet	2
		HM-02-245	Short uni-pedal, cool grey	1

Kit name	Number	Kit contents		
		Number	Name	Quantity
Pump pedal replacement kit	YM-KIT-100100	HM-02-240	Pump pedal plastic, cool grey	1
		HM-12-009	Groove pin	1
Brake-steer pedal replacement kit	YM-KIT-100101	HM-12-097	Ø6 drilled pin flange head	1
		HM-11-33	Ø6 rue clip	1
		HM-02-246	Butterfly 'V' pedal	1
Brake-steer mech replacement kit	YM-KIT-100102	YM-660-320	Brake rod assembly	1
		HM-05-057	M8 x 25 hexagon head flange adhesive applied bolt	6
		YM-660-195	Brake rod crank cap	3
		HM-11-33	Ø6 rue clip	3
		HM-12-027	Ø6 x 26 clevis pin	3
Base hood replacement kit	YM-KIT-100103	HM-02-247	Base hood ST1-X	1
		YM-660-249	Base hood dual lock 25 mm	8
		YM-660-257	Base hood support single notched	2
		YM-660-248	Base hood support double notched	2
		YM-660-251	SGS branded dual sided EVA tape	4
		HM-02-138	Flush head plastic rivet	3
		HM-05-057	M8 x 25 hexagon head flange adhesive applied bolt	2
		HM-20-1009	Right trend pedal label	1
		HM-20-1010	Left trend pedal label	1
		HM-20-1011	Right-left logo label	2
		HM-20-1013	Front pedal hood label	1
HM-20-1014	Back pedal hood label	1		
Pump replacement kit	YM-KIT-100104	HM-18-06	Jack assembly	1
		HM-05-043	M5*20 imbus bolt	2
		YM-660-086	Release rod bearing	1
		HM-05-114	M6 x 30 hexagon socket head screw	4

Kit name	Number	Kit contents		
		Number	Name	Quantity
		HM-08-05	M6 fibered nut	4
		HM-07-22	M6 steel washer (small)	8
		HM-05-057	M8 x 25 hexagon head flange adhesive applied bolt	4
Anti-static caster replacement kit	YM-KIT-100105	HM-12-095	Stepped flange bearing	2
		HM-01-69	2046 XSX 200 R36-32S35 D RAL9003 4 x M6 Grauweiss antistatic wheel	1
		HM-08-06	M8 fibered nut	1
		HM-06-001	M6 x 25 mushroom head square neck bolt	1
		HM-08-05	M6 fibered nut	1
		HM-12-905	Flanged bronze bushing	1
		YM-660-127	Caster fixing part	1
		HM-07-06	M8 large washer - special	1
		HM-07-22	M6 steel washer (small)	1
Left siderail assembly replacement kit	YM-KIT-100106	YM-500-006	Left spindle assembly	5
		YM-500-007	Left latch spindle assembly	1
		HM-09-34	Ø6,6 x 32 tubular component	6
		HM-09-35	5 x 12 aluminum blind rivet	6
		HM-05-002	M8 x 30 torx head machine screw	6
		HM-12-033	Spindle bearing	6
		HM-02-257	Left top rail	1
		HM-02-253	Spindle plug	6
		HM-07-22	M6 steel washer (small)	4
		HM-08-05	M6 fibered nut	2
Right siderail assembly replacement kit	YM-KIT-100107	YM-500-010	Right spindle assembly	5

Kit name	Number	Kit contents		
		Number	Name	Quantity
		YM-500-009	Right latch spindle assembly	1
		HM-09-34	Ø6,6 x 32 tubular component	6
		HM-09-35	5 x 12 aluminum blind rivet	6
		HM-05-002	M8 x 30 torx head machine screw	6
		HM-12-033	Spindle bearing	6
		HM-02-258	Right toprail	1
		HM-02-253	Spindle plug	6
		HM-07-22	M6 steel washer (small)	4
		HM-08-05	M6 fibered nut	2
Fowler assembly replacement kit	YM-KIT-100108	YM-500-060-BY	Fowler weldment	1
		HM-02-255	Fowler release handle	2
		YM-500-041	Fowler laminated sheet	1
		HM-12-035	Handle pivot bushing	4
		HM-02-259	Inner cable roller	2
		HM-09-33	6 x 20 steel large flange open end pop rivet	4
		HM-09-35	5 x 12 aluminum blind rivet	6
		HM-02-260	Outer cable roller	2
		HM-02-263	Recessed bumper	2
		YM-HM-02-436	Laminated sheet spacer handle	2
		HM-09-34	Ø6,6 x 32 tubular component	4
		HM-16-125	Fowler cable assembly	1
		YM-HM-02-438	7 x 10 x 4 washer	4
		YM-HM-02-268	10,4 x 16 x 10,7 spacer	2
		HM-12-040	Ø6 x 52 clevis pin	1
		HM-11-33	Ø6 rue clip	1
HM-18-07	Cylinder - 420 N	1		

Kit name	Number	Kit contents		
		Number	Name	Quantity
		HM-19-106	Gas spring trip	1
		HM-05-002	M8 x 30 torx head machine screw	2
		HM-12-036	Pivot bushing	2
		HM-08-09	M8 hex nut	4
		HM-11-35	Ø8 rue clip	1
		HM-12-039	Ø8 x 70 clevis pin	1
		YM-500-214	225 x 5 mm mattress Velcro hook	1
		HM-12-041	6,6 x 10 x 33 sleeve	1
		HM-02-272	Fowler-foot pivot cover	2
Fowler cylinder replacement kit	YM-KIT-100109	YM-HM-02-268	10,4 x 16 x 10,7 spacer	2
		HM-12-040	Ø6 x 52 clevis pin	1
		HM-11-33	Ø6 rue clip	1
		HM-18-07	Cylinder - 420 N	1
		HM-19-106	Gas spring trip	1
		HM-12-041	6,6 x 10 x 33 sleeve	1
		HM-11-35	Ø8 rue clip	1
		HM-12-039	Ø8 x 70 clevis pin	1
Foot end assembly replacement kit	YM-KIT-100110	YM-500-062-BY	Foot end weldment assembly	1
		YM-500-056	Footrest laminated sheet	1
		HM-02-263	Recessed bumper	2
		HM-09-34	Ø6,6 x 32 tubular component	6
		HM-09-35	5 x 12 aluminum blind rivet	8
		YM-HM-02-438	7 x 10 x 4 washer	6
		HM-05-002	M8 x 30 torx head machine screw	2
		HM-08-09	M8 hex nut	4
		HM-12-036	Pivot bushing	2
		YM-500-214	225 x 5 mm mattress Velcro hook	2
		YM-500-215	610 x 5 mm mattress Velcro hook	1

Kit name	Number	Kit contents		
		Number	Name	Quantity
		HM-02-272	Fowler-foot pivot cover	2
Fowler tray replacement kit	YM-KIT-100111	YM-HM-02-434	Fowler tray	1
		HM-20-1026	Right Fowler tray label	1
		HM-20-1027	Left Fowler tray label	1
		HM-20-1028	Middle Fowler-foot end tray label	1
		HM-12-046	Hood latch	4
Foot end tray replacement kit	YM-KIT-100112	YM-HM-02-435	Foot end tray	1
		HM-20-1028	Middle Fowler-foot end tray label	1
		HM-20-1029	Right foot end tray label	1
		HM-20-1030	Right foot end tray short label	1
		HM-20-1031	Left foot end tray label	1
		HM-20-1032	Left foot end tray short label	1
		HM-12-046	Hood latch	4
Tray label replacement kit	YM-KIT-100113	HM-20-1026	Right Fowler tray label	1
		HM-20-1027	Left Fowler tray label	1
		HM-20-1028	Middle Fowler-foot end tray label	2
		HM-20-1029	Right foot end tray label	1
		HM-20-1030	Right foot end tray short label	1
		HM-20-1031	Left foot end tray label	1
		HM-20-1032	Left foot end tray short label	1
Bumper A cover kit	YM-KIT-100114	YM-501-039	Bumper A upper cover	1
		YM-501-025	Bumper A bottom cover	1
		HM-05-060	4,8*25 Torx pan head tapping screw ANSI B18.6.4	3
Bumper B cover kit	YM-KIT-100115	YM-501-024	Bumper B bottom cover	1

Kit name	Number	Kit contents		
		Number	Name	Quantity
		YM-501-040	Bumper B upper cover	1
		HM-05-060	4,8*25 Torx pan head tapping screw ANSI B18.6.4	3
Bumper A cover kit, push handle	YM-KIT-100116	YM-501-025	Bumper A bottom cover	1
		YM-501-043	Bumper A upper cover, push handle	1
		HM-05-060	4,8*25 Torx pan head tapping screw ANSI B18.6.4	3
		HM-05-002	M8 x 30 torx head machine screw	1
Bumper B cover kit, push handle	YM-KIT-100117	YM-501-024	Bumper B bottom cover	1
		YM-501-044	Bumper B upper cover, push handle	1
		HM-05-060	4,8*25 Torx pan head tapping screw ANSI B18.6.4	3
		HM-05-002	M8 x 30 torx head machine screw	1
Bumper A cover kit, IV pole	YM-KIT-100118	YM-501-025	Bumper A bottom cover	1
		YM-501-041	Bumper A upper cover, IV pole	1
		HM-05-060	4,8*25 Torx pan head tapping screw ANSI B18.6.4	3
		HM-05-002	M8 x 30 torx head machine screw	2
Bumper B cover kit, IV pole	YM-KIT-100119	YM-501-024	Bumper B bottom cover	1
		YM-501-042	Bumper B upper cover, IV pole	1
		HM-05-060	4,8*25 Torx pan head tapping screw ANSI B18.6.4	3
		HM-05-002	M8 x 30 torx head machine screw	2
Bumper A cover kit, IV pole/push handle	YM-KIT-100120	YM-501-025	Bumper A bottom cover	1
		YM-501-023	Bumper A upper cover, IV pole/push handle	1

Kit name	Number	Kit contents		
		Number	Name	Quantity
		HM-05-060	4,8*25 Torx pan head tapping screw ANSI B18.6.4	3
		HM-05-002	M8 x 30 torx head machine screw	3
Bumper B cover kit, IV pole/push handle	YM-KIT-100121	YM-501-024	Bumper B bottom cover	1
		YM-501-022	Bumper B upper cover, IV pole/push handle	1
		HM-05-060	4,8*25 Torx pan head tapping screw ANSI B18.6.4	3
		HM-05-002	M8 x 30 torx head machine screw	3
Base hood, non X-ray, replacement kit	YM-KIT-100124	HM-02-250	Base hood ST1	1
		YM-660-249	Base hood dual lock 25 mm	8
		YM-660-257	Base hood support single notched	2
		YM-660-248	Base hood support double notched	2
		YM-660-251	SGS branded dual sided EVA tape	4
		HM-02-138	Flush head plastic rivet	3
		HM-05-057	M8 x 25 hexagon head flange adhesive applied bolt	2
		HM-20-1009	Right trend pedal label	1
		HM-20-1010	Left trend pedal label	1
		HM-20-1011	Right-left logo label	2
		HM-20-1013	Front pedal hood label	1
HM-20-1014	Back pedal hood label	1		
Fowler assembly, non X-ray, replacement kit	YM-KIT-100125	YM-501-011-BY	Fowler, non X-ray, white	1
		HM-02-255	Fowler release handle	2
		YM-500-041	Fowler laminated sheet	1
		HM-12-035	Handle pivot bushing	4
		HM-02-259	Inner cable roller	2

Kit name	Number	Kit contents		
		Number	Name	Quantity
		HM-09-33	6 x 20 steel large flange open end pop rivet	4
		HM-09-35	5 x 12 aluminum blind rivet	6
		HM-02-260	Outer cable roller	2
		HM-02-271	Recessed bumper, non X-ray	2
		YM-HM-02-436	Laminated sheet spacer handle	2
		HM-09-34	Ø6,6 x 32 tubular component	4
		HM-16-125	Fowler cable assembly	1
		YM-HM-02-438	7 x 10 x 4 washer	4
		YM-HM-02-268	10,4 x 16 x 10,7 spacer	2
		HM-12-040	Ø6 x 52 clevis pin	1
		HM-11-33	Ø6 rue clip	1
		HM-18-07	Cylinder - 420 N	1
		HM-19-106	Gas spring trip	1
		HM-05-002	M8 x 30 torx head machine screw	2
		HM-12-036	Pivot bushing	2
		HM-08-09	M8 hex nut	4
		HM-11-35	Ø8 rue clip	1
		HM-12-039	Ø8 x 70 clevis pin	1
		YM-500-214	225 x 5 mm mattress Velcro hook	1
		HM-12-041	6,6 x 10 x 33 sleeve	1
HM-02-272	Fowler-foot pivot cover	2		
Foot end assembly, non X-ray, replacement kit	YM-KIT-100126	YM-501-033-BY	Footside rectangular tube, non X-ray, white	1
		YM-501-047-BY	Footside support weld assembly, white	1
		HM-08-03	M8 rivet nuts SS half-hex reduced head stainless steel	8
		HM-05-092	M8*20 round head imbus bolt	8

Kit name	Number	Kit contents		
		Number	Name	Quantity
		YM-501-035-BY	Footrest sheet metal, non X-ray, white	1
		HM-09-34	Ø6,6 x 32 tubular component	8
		HM-09-35	5 x 12 aluminum blind rivet	8
		YM-HM-02-438	7 x 10 x 4 washer	8
		HM-02-98	Plastic cable holder, non X-ray	2
		YM-500-214	225 x 5 mm mattress Velcro hook	2
		YM-500-215	610 x 5 mm mattress Velcro hook	1

Service

Raising the hood

Tools required:

- #2 Phillips screwdriver
- Bungee cords

Procedure:

1. Apply the brake. Push on the product to make sure that the brake is working.
2. Raise the product to the highest position.
3. Raise both siderails to the up and latched position.
4. Use a #2 Phillips screwdriver to remove the flush head plastic rivet (C) that secure the base hood (A) to the hood retainer (Figure 4).

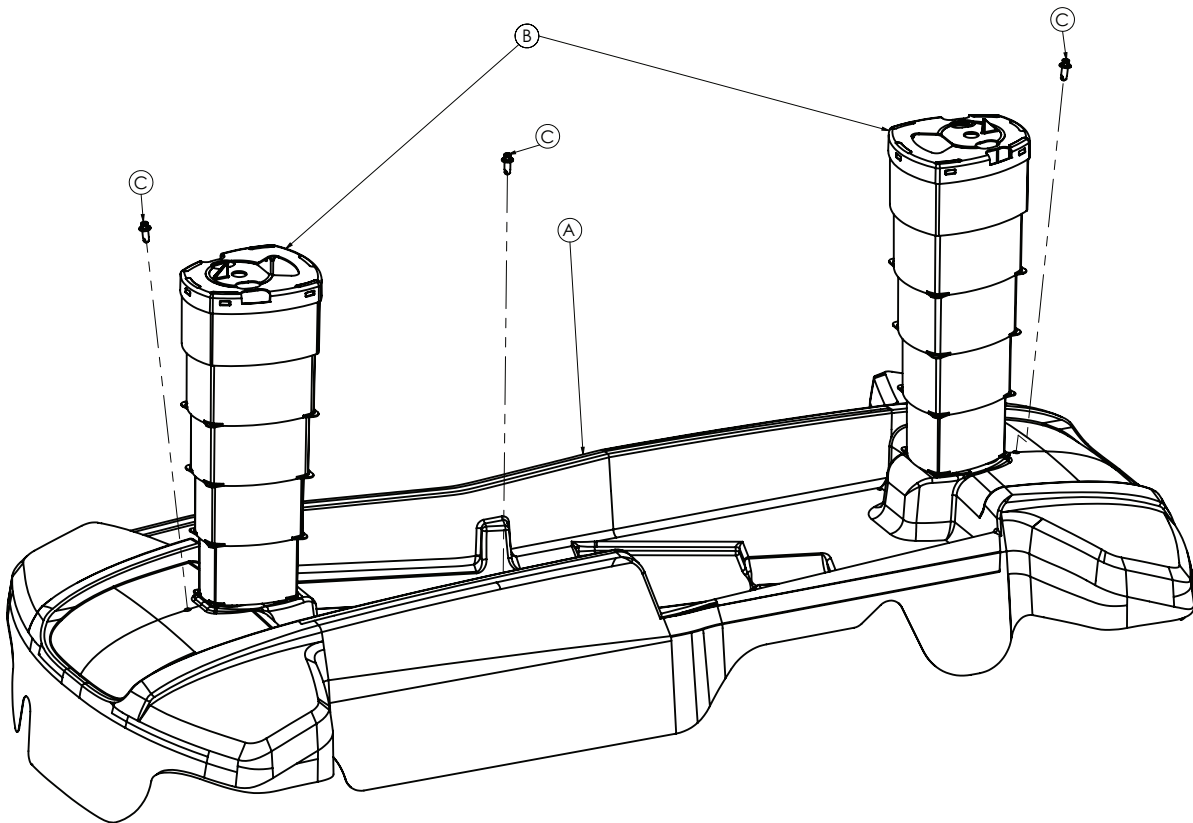


Figure 4 – Raising the hood

5. Use bungee cords to raise and secure the base hood to the litter frame.

Replacing the hood

Tools required:

- #2 Phillips screwdriver

Procedure:

1. Remove the litter, see *Litter top removal* (page 29).
2. Apply the brake. Push on the product to make sure that the brake is working.

3. Raise the product to the highest position.
4. Raise both siderails to the up and latched position.
5. Use a #2 Phillips screwdriver to remove the flush head plastic rivet (C) that secure the base hood (A) to the hood retainer (Figure 4).
6. Remove and save the bellows (B), and discard the base hood (A) (Figure 4).
7. Reverse steps to reinstall.
8. Verify proper operation before you return the product to service.

Caster assembly replacement

Tools required:

- 10 mm socket wrench
- 13 mm socket wrench
- 3/8" drive ratchet
- 3/8" drive extension
- 3/8" drive torque wrench (Nm)
- Small jack

Procedure:

1. Raise the base hood, see *Raising the hood* (page 20).
2. Put the brake/steer pedal in the neutral position.
3. Use a 13 mm socket wrench with a 3/8" drive ratchet to remove the M8 nut (L) (Figure 5).

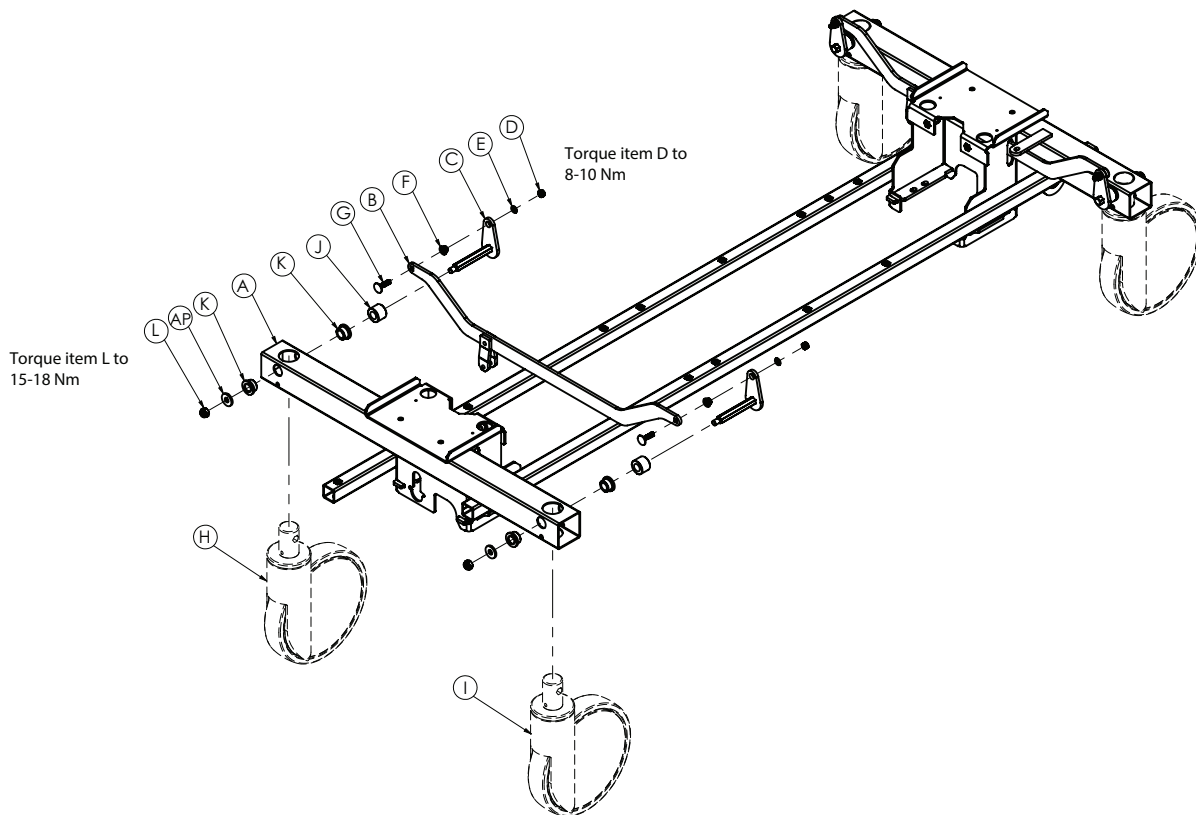


Figure 5 – Caster assembly replacement

4. Use a 10 mm socket wrench with a 3/8" drive ratchet to remove the M6 nut (D).

5. Remove and save the caster lock link part weldment (C), washers (E, AP), caster fixing part (J), bearing (K), and bushing (F).
6. Apply the brake. Push on the product to make sure that the brake is working.
7. Use a small jack to raise the product until the caster (H, I) falls out of the frame socket.
8. Position the supplied caster in the frame and lower the jack until the caster is in the base frame.

Note - Make sure that the read arrow on the top of the caster assembly points toward the foot end of the product.

9. Reverse steps to reinstall.

Note - Make sure to use a 3/8" drive torque wrench (Nm) to torque the M8 nut (L) to 15-18 Nm and the M6 nut (D) to 8-10 NM.

10. Verify proper operation before you return the product to service.

Brake rod replacement

Tools required:

- 13 mm socket wrench
- 13 mm wrench
- 3/8" drive ratchet
- 3/8" drive torque wrench (Nm)
- Needle nose pliers

Procedure:

1. Raise the base hood, see *Raising the hood* (page 20).
2. Use needle nose pliers to remove and save the rue ring cotter (M) and clevis pin (N) that secure the brake link assembly to the brake activation crank (Figure 6).

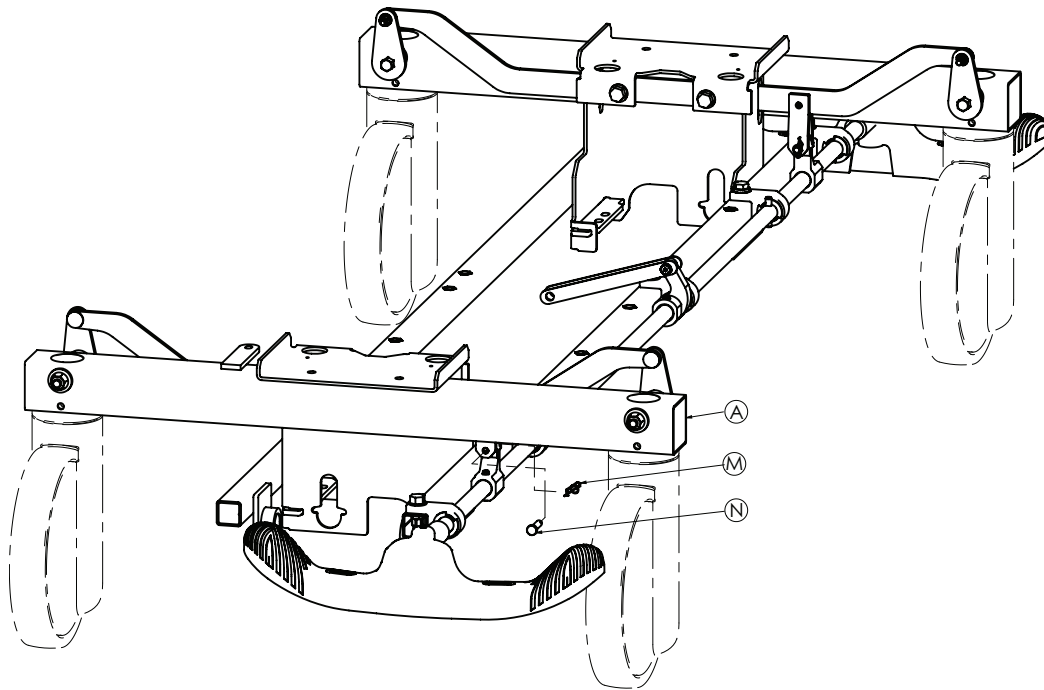


Figure 6 – Brake rod replacement

3. Remove and save the brake rod crank caps (R) (Figure 7).

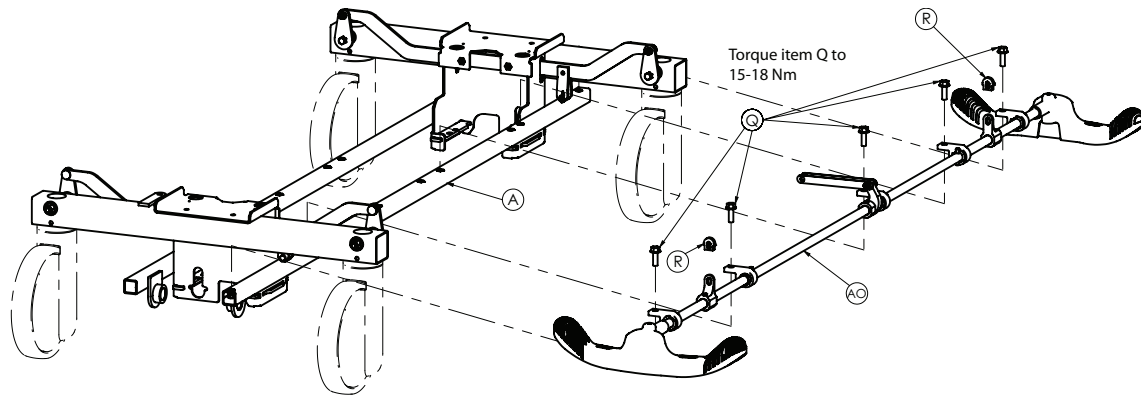


Figure 7 – Brake rod replacement

- Use a 13 mm wrench, 13 mm socket wrench, and a 3/8" drive ratchet to remove and save the hex head screw (P), hex nut, and cam bearing (O) that secure the fifth wheel drive link assembly to the brake rod assembly (Figure 8).

Note - When you reinstall the hex head screw (P) make sure that you use a 3/8" drive torque wrench (Nm) to torque the screw to 15-18 Nm.

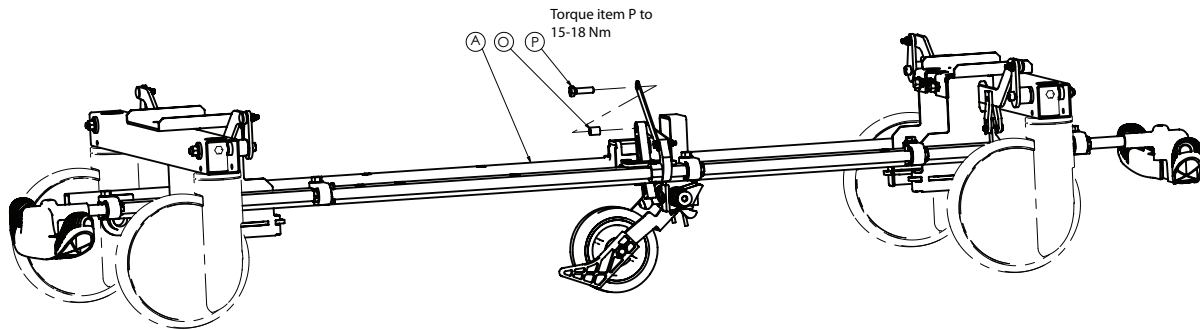


Figure 8 – Brake rod replacement

- Use a 13 mm socket wrench and a 3/8" drive ratchet to remove the five hex head bolts (Q) that secure the brake rod supports to the brake rod assembly (Figure 7).

Note - When you reinstall the hex head bolts (Q) make sure that you use a 3/8" drive torque wrench (Nm) to torque the bolts to 15–18 Nm.

- Reverse steps to reinstall.
- Verify proper operation before you return the product to service.

Fifth wheel assembly replacement

Tools required:

- 13 mm socket wrench
- 13 mm wrench
- 3/8" drive ratchet
- 3/8" drive torque wrench (Nm)
- Needle nose pliers

Procedure:

- Raise the base hood, see *Raising the hood* (page 20).
- Use a 13 mm wrench, 13 mm socket wrench, and 3/8" drive ratchet to remove and save the hex head screw (P), hex nut (T), and cam bearing (O) that secure the fifth wheel drive link assembly to the brake rod assembly (Figure 9).

Note - When you reinstall the hex head screw (P) make sure that you use a 3/8" drive torque wrench (Nm) to torque the screw to 15-18 Nm.

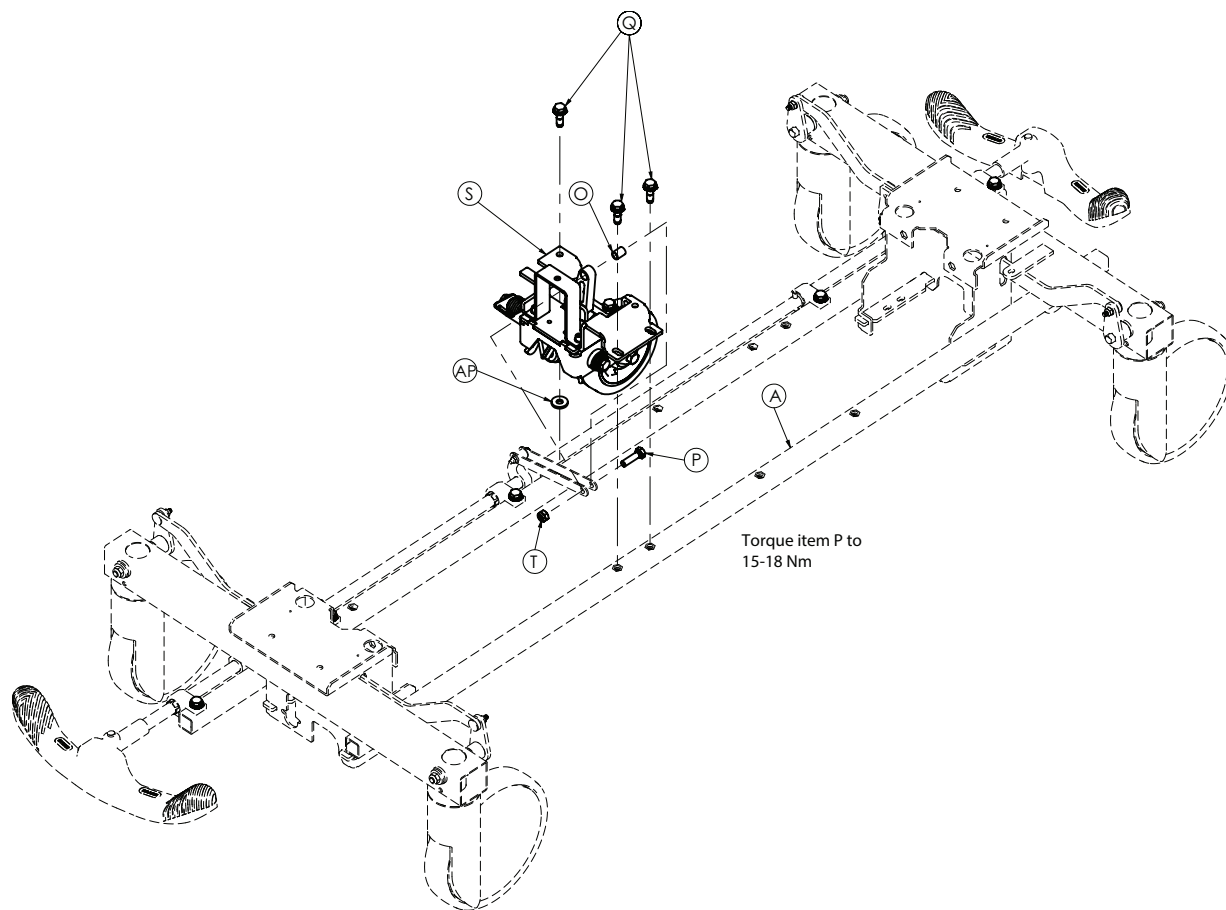


Figure 9 – Fifth wheel assembly replacement

3. Use a 13 mm socket wrench and 3/8" drive ratchet to remove and save the three hex head bolts (Q) and washer (AP) that secure the fifth wheel assembly (S) to the base frame Figure 9.
4. Use needle nose pliers to remove the pump pedal return spring from the fifth wheel bracket.
5. Use needle nose pliers to remove the rue ring cotter that secures the foot end jack release rod to the release pedal weldment.
6. Remove the foot end jack release rod.
7. Work from the patient left side to rotate the fifth wheel assembly counterclockwise. Lift the fifth wheel assembly up and out.
8. Reverse steps to reinstall.
9. Verify proper operation before you return the product to service.

Jack replacement

Tools required:

- 13 mm socket wrench
- 13 mm wrench
- 3/8" drive ratchet
- 3/8" drive extension
- 3/8" drive torque wrench (Nm)

- 5 mm hex key
- #2 Phillips screwdriver

Procedure:

1. Apply the brake. Push on the product to make sure that the brake is working.
2. Remove the litter from the product, see *Litter top removal* (page 29).
3. Remove the base hood, see *Replacing the hood* (page 20).
4. Use a 13 mm socket wrench with a 3/8" drive extension and a 3/8" drive ratchet to remove and save the two hex head bolts (Q) that hold the jack to the base frame and remove the reservoir clamp (AE) (Figure 10).

Note - When you reinstall the hex head bolts (Q) make sure that you use a 3/8" drive torque wrench (Nm) to torque the bolts to 15-18 Nm.

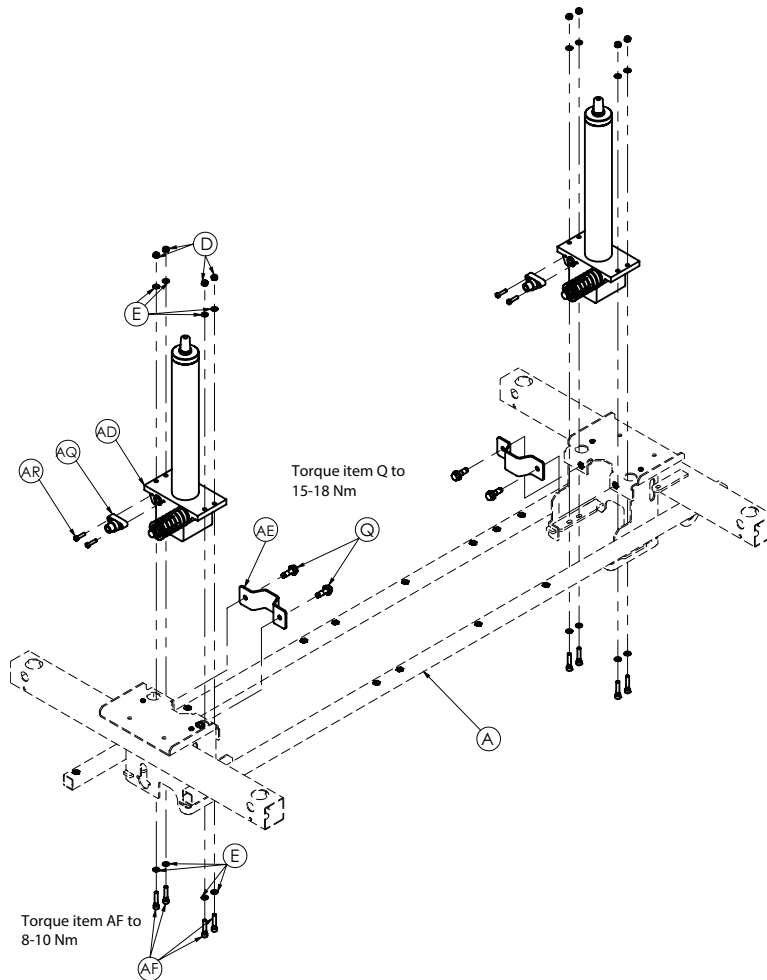


Figure 10 – Jack replacement

5. Lift up on the pump connecting rod and disconnect the pump piston from the connecting rod.
6. Disconnect the release pedal swivel from the pins on the release pedal weldment.
7. Remove the head end release rod from the release valve on the jack assembly.
8. Use a 10 mm socket wrench with a 3/8" drive extension and a 3/8" drive ratchet to remove and save the four M6 hex nuts (D) while you hold the socket head screws (AF) from below with a 5 mm hex key (Figure 10).
9. Remove the jack assembly (AD) (Figure 10).

Note - When you reinstall the jack assembly (AD), make sure that you install but do not tighten the hex head bolts (Q) and reservoir clamp (AE) removed in step 4.

10. Reinstall the pump connecting rod and release rod (removed in steps 5 and 7).

Note - The jack descent rate is set at the factory. Do not adjust the rate.

11. Press the pump pedal to the floor to position the jack on the base frame.

12. Use a 3/8" drive torque wrench to reinstall the hex head bolts (Q) to 15-18 Nm to secure the reservoir clamp (AE) to the jack assembly (AD) (Figure 10).

13. Use a 3/8" drive torque wrench to reinstall the M6 hex nuts (D) (removed in step 8) to 8-10 Nm to secure the jack assembly (AD) to the base frame (A) (Figure 10).

14. Reinstall the base hood, see *Replacing the hood* (page 20).

15. Reinstall the litter top, see *Litter top removal* (page 29).

16. Raise the litter to the highest position. Apply weight to the litter to make sure that the jacks hold and do not drift.

17. Verify proper operation before you return the product to service.

Remove excess air from the hydraulic system

Tools required:

- None

Procedure:

1. Raise the product to the highest position.
2. Push down on the pump pedal several times to force the air through the system.
3. Verify proper operation before you return the product to service.

Pump pedal replacement

Tools required:

- 13 mm socket wrench
- 3/8" drive ratchet
- 3/8" drive extension
- 3/8" drive torque wrench (Nm)
- Needle nose pliers

Procedure:

1. Raise the base hood, see *Raising the hood* (page 20).
2. Use a 13 mm socket wrench with a 3/8" drive extension and a 3/8" drive ratchet to remove the hex head bolts (Q) that secure the pump pedal link (AA) to the pump pedal (W) (Figure 11).

Note - When you reinstall the hex head bolts (Q) make sure that you use a 3/8" drive torque wrench (Nm) to torque the screw to 15-18 Nm.

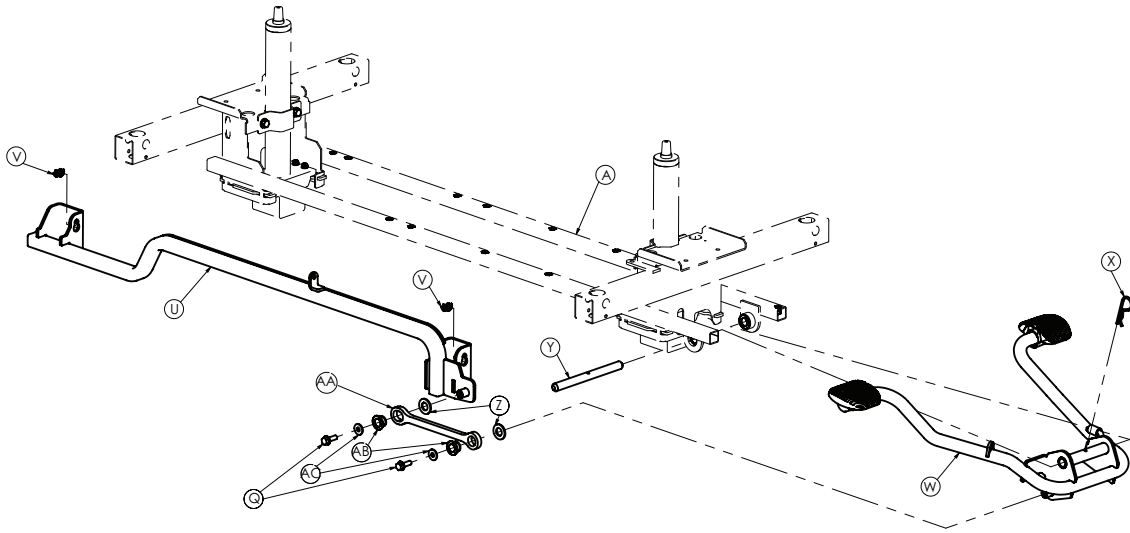


Figure 11 – Pump pedal replacement

3. Use needle nose pliers to remove the hair pin cotter (X) from the pivot pin (Y).
4. Use needle nose pliers to remove the pump pedal return spring.
5. Remove and save the pivot pin (Y) from the base frame (A).

Note - The pump pedal assembly (W) will be loose and may fall when you remove the pivot pin (Y).

6. Remove the pump pedal assembly (W).
7. Reverse steps to reinstall.
8. Verify proper operation before you return the product to service.

Release pedal adjustment

Tools required:

- Needle nose pliers

Procedure:

1. Raise the base hood, see *Raising the hood* (page 20).
2. Use needle nose pliers to remove the rue clips (M) from the release pedal assembly (AH) (Figure 12).

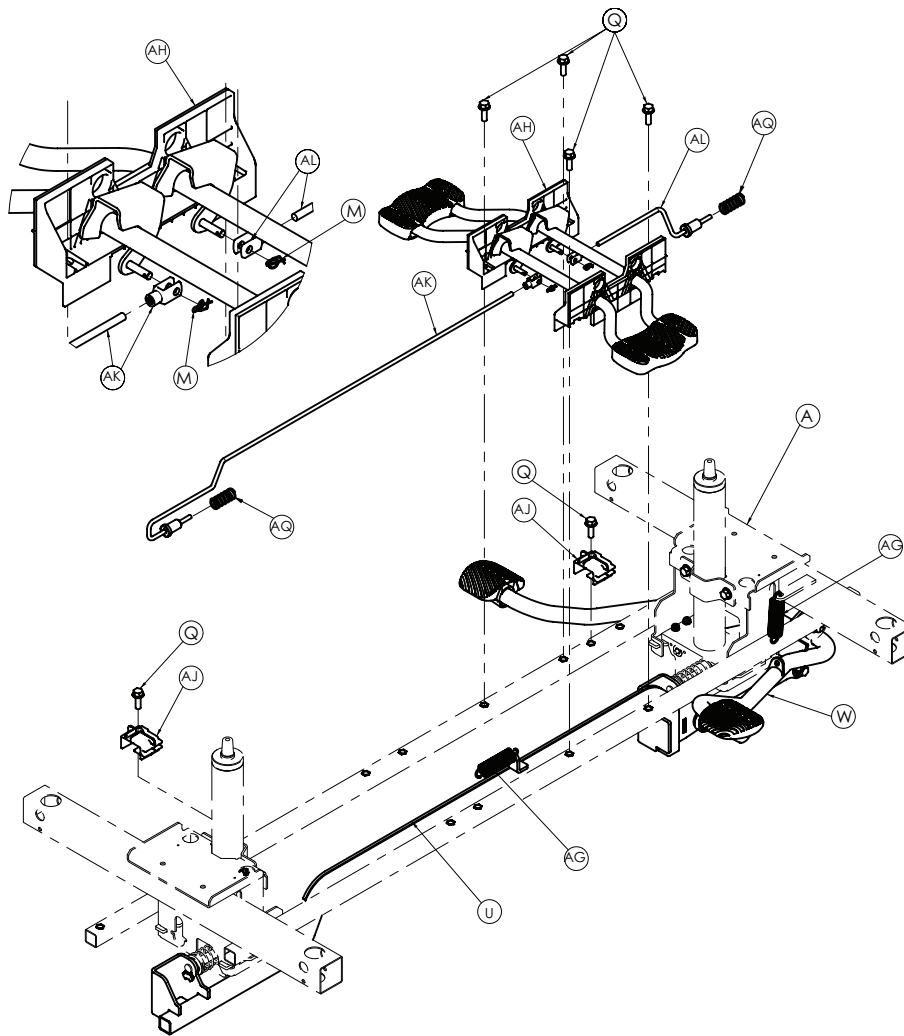


Figure 12 – Release pedal adjustment

3. Remove the clevis joint from the release pedal assembly (AH).
4. To increase the descent rate, increase the amount of the release rod (AK) thread in the clevis joint.
5. To decrease the descent rate, decrease the amount of the release rod (AK) thread in the clevis joint.
6. Reverse steps to reinstall.
7. Verify proper operation before you return the product to service.

Note - If you thread the clevis joint too far on the release rod (AK), it will trigger the release valve and the jack will drift.

Release pedal replacement

Tools required:

- 13 mm socket wrench
- 3/8" drive ratchet
- 3/8" drive extension
- Needle nose pliers

Procedure:

1. Raise the base hood, see *Raising the hood* (page 20).

2. Use needle nose pliers to remove the rue clips (M) and disconnect the release rods (AK, AL) from the release pedal assembly (AH) (Figure 12).
3. Use a 13 mm socket wrench with a 3/8" drive extension and a 3/8" drive ratchet to remove the hex head bolts (Q) that secure the release pedal assembly (AH).
4. Reverse steps to reinstall.
5. Verify proper operation before you return the product to service.

Litter top removal

Tools required:

- 13 mm socket wrench
- 3/8" drive ratchet
- 3/8" drive extension
- 3/8" drive torque wrench (Nm)
- M8 hex head bolt

Procedure:

1. Apply the brake. Push on the product to make sure that the brake is working.
2. Raise the product to the highest position.
3. Raise the Fowler backrest.
4. At the head end and foot end of the product use a 13 mm socket wrench with a 3/8" drive extension and a 3/8" drive ratchet to remove the two hex head bolts (A) that secure the jack support tubes to the jack shafts (Figure 14).

Note - When you reinstall the hex head bolts (A) make sure that you use a 3/8" drive torque wrench (Nm) to torque the bolts to 15-18 Nm.

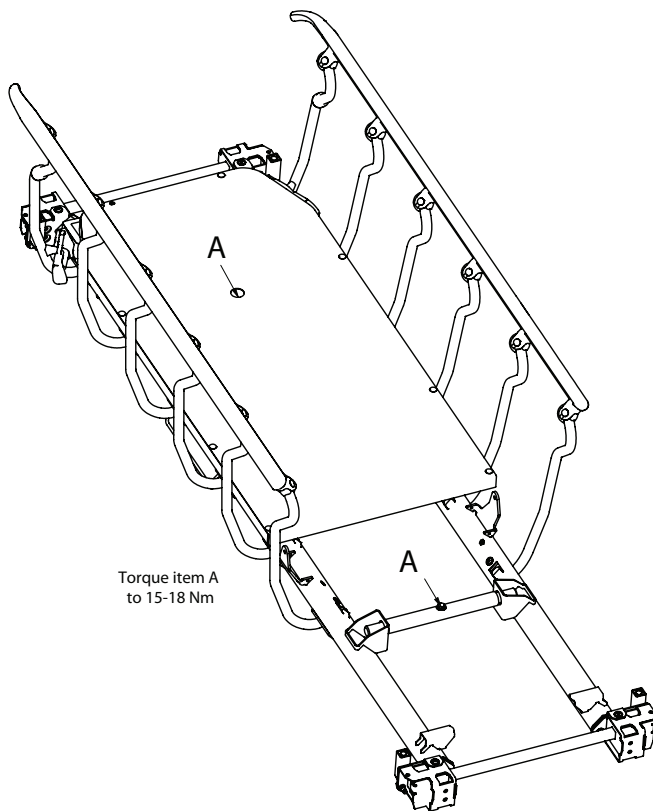


Figure 13 – Litter top removal, ST1

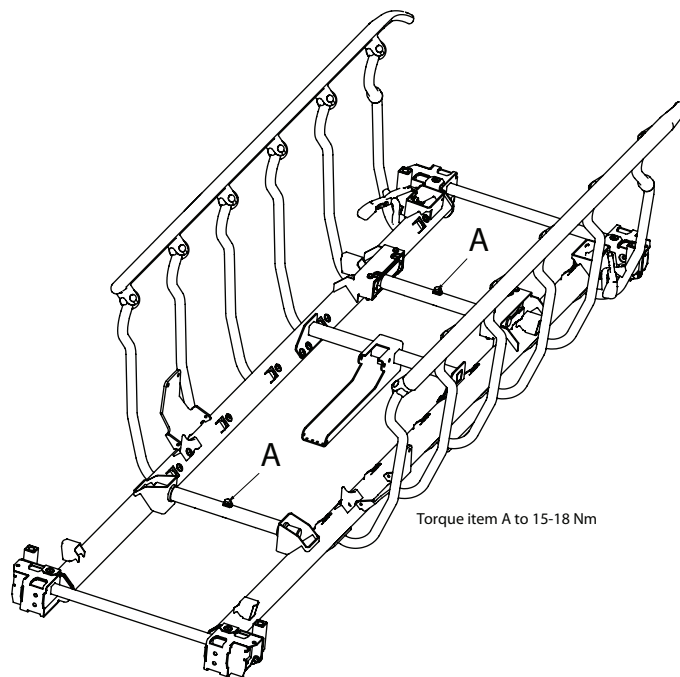


Figure 14 – Litter top removal, ST1-X

5. Insert an M8 hex head bolt into the top of the jack supports to separate the litter top from the jack shaft.
 6. Lift the litter off of the jack shafts and set the litter aside.
- Note** - Litter top removal requires two people.
7. Reverse steps to reinstall.
 8. Verify proper operation before you return the product to service.

Siderail latch replacement

Tools required:

- T40 Torx driver

Procedure:

1. Apply the brake. Push on the product to make sure that the brake is working.
2. Raise the product to the highest position.
3. Use a T40 Torx driver to remove and discard the two torx head machine screws (A) that hold the siderail latch (B) to the litter frame and remove the latch (Figure 15).

Note - When you install the torx head machine screws (A) make sure that you use a T40 Torx driver to torque the screws to 15-18 Nm.

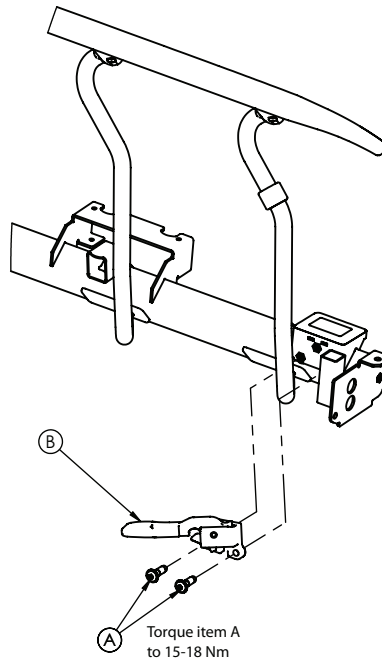


Figure 15 – Siderail latch replacement

4. Reverse steps to install.
5. Verify proper operation before you return the product to service.

X-ray cassette panel replacement - head end, KAPADO-X option

Tools required:

- None

Procedure:

1. Remove the mattress from the litter surface and set aside.
2. Raise the product to the highest position.
3. Raise the Fowler backrest to the highest position.
4. Raise both siderails to the up and latched position.
5. From below the litter frame, use your hand to unclip the four spring clips (A) that secure the head end X-ray cassette panel to the litter frame (Figure 16).

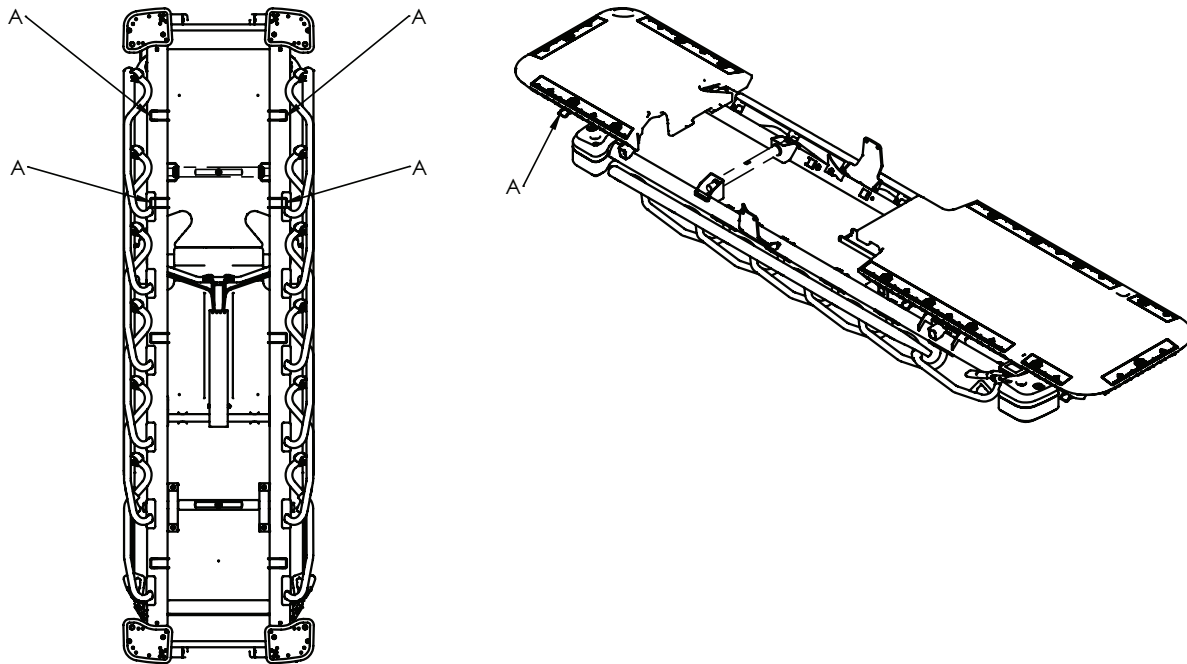


Figure 16 – X-ray cassette panel replacement - head end

6. Remove the head end X-ray cassette panel.
7. Reverse steps to reinstall.

Note - The head end panel and the foot end panel are interlocked.

8. Verify proper operation before you return the product to service.

X-ray cassette panel replacement - foot end, KAPADO-X option

Tools required:

- None

Procedure:

1. Remove the mattress from the litter surface and set aside.
2. Raise the product to the highest position.
3. Raise the Fowler backrest in the flat position (0 degrees).
4. Fold the foot section toward the Fowler backrest until the foot litter section rests on the Fowler backrest
5. Raise both siderails to the up and latched position.
6. From below the litter frame, use your hand to unclip the four spring clips (A) that secure the foot end X-ray cassette panel to the litter frame (Figure 17).

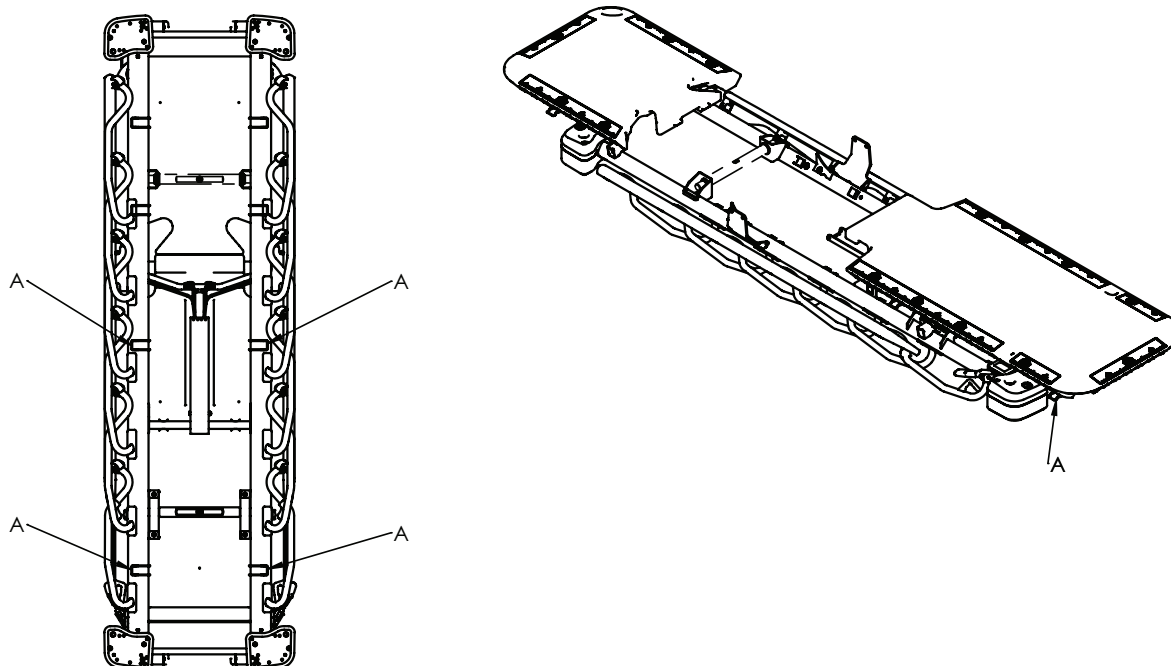


Figure 17 – X-ray cassette panel replacement - foot end

7. Remove the foot end X-ray cassette panel.
 8. Reverse steps to reinstall.
- Note** - The head end panel and the foot end panel are interlocked.
9. Verify proper operation before you return the product to service.

Fowler gas cylinder replacement, KAPADO-X option

Tools required:

- 17 mm combination wrench
- Needle nose pliers

Procedure:

1. Remove the mattress and set aside.
2. Raise the product to the highest position.
3. Raise the Fowler backrest to about 30 degrees.
4. Fold the foot section toward the Fowler backrest until the foot section rests on the Fowler backrest.
5. Raise both siderails to the up and latched position.
6. From below the litter frame, use your hand to unclip the four spring clips (A) that secure the foot skin to the foot frame.
7. Lower the siderails to the lowest position.
8. Use needle nose pliers to remove the rue ring cotter (B) and clevis pin (C) that secure the cylinder (D) to the Fowler backrest frame (Figure 18).

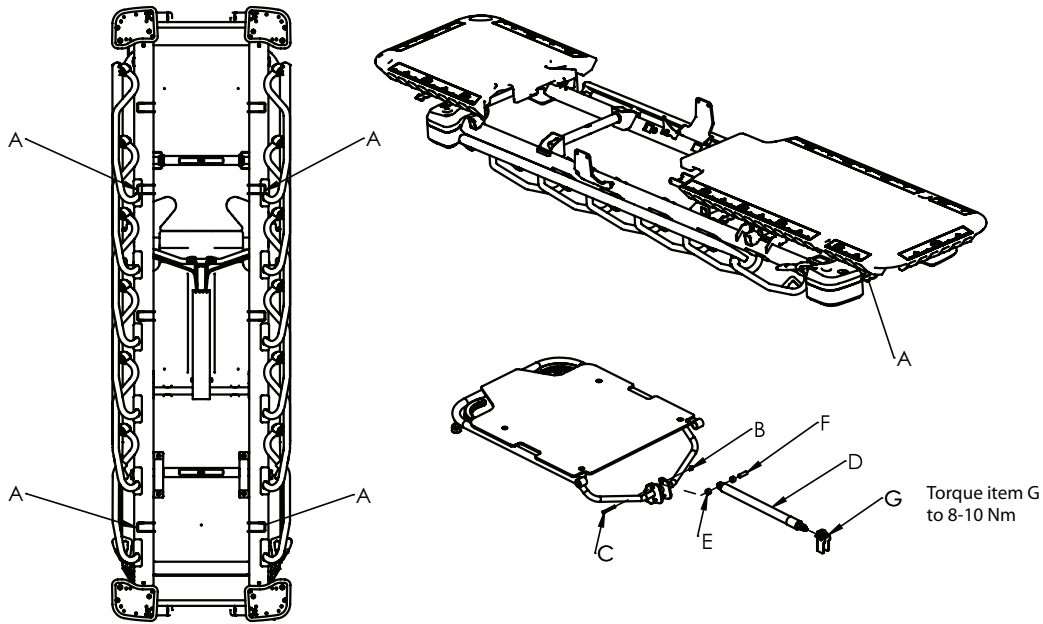
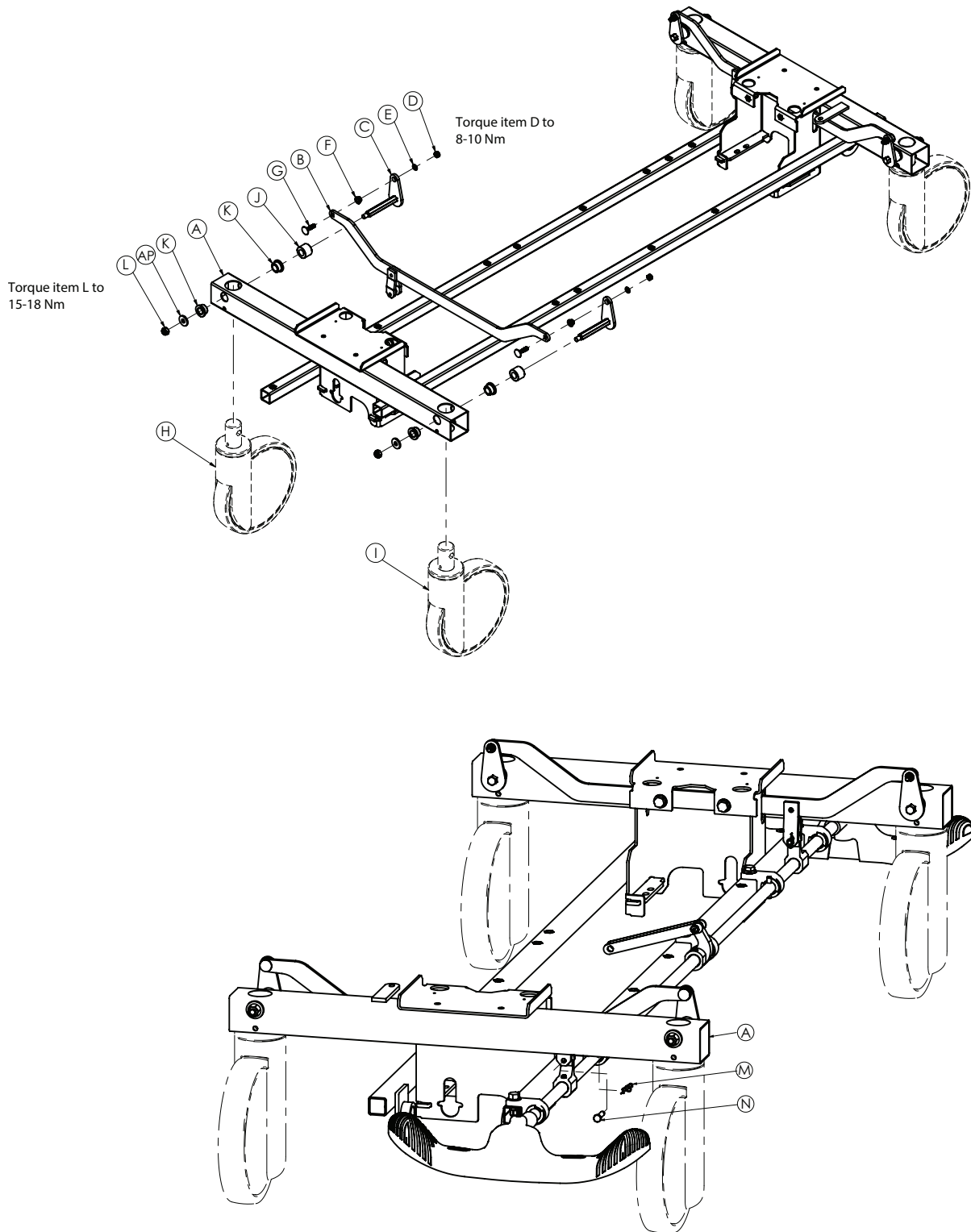


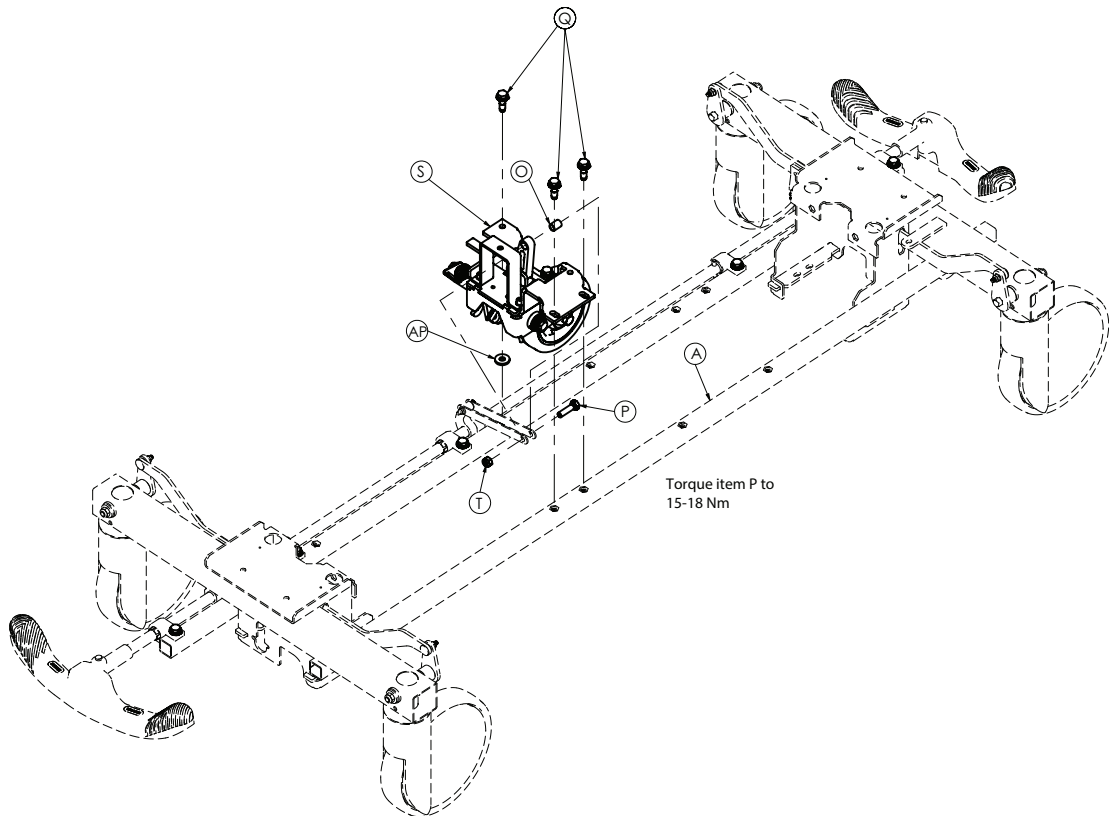
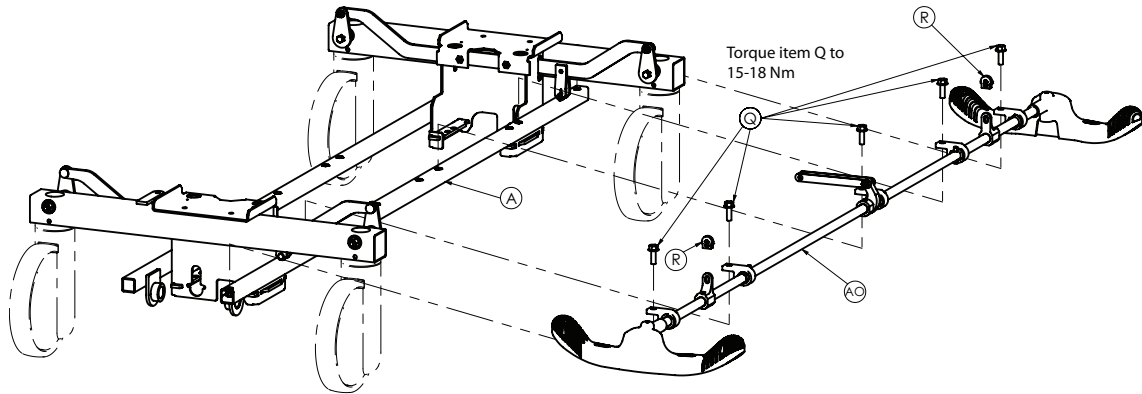
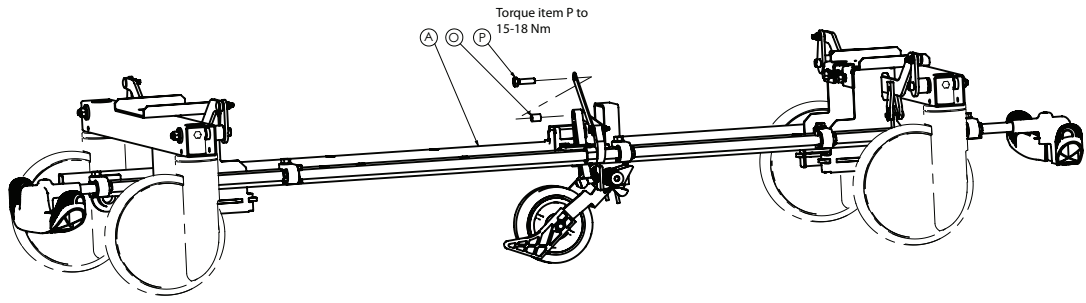
Figure 18 – Fowler gas cylinder replacement

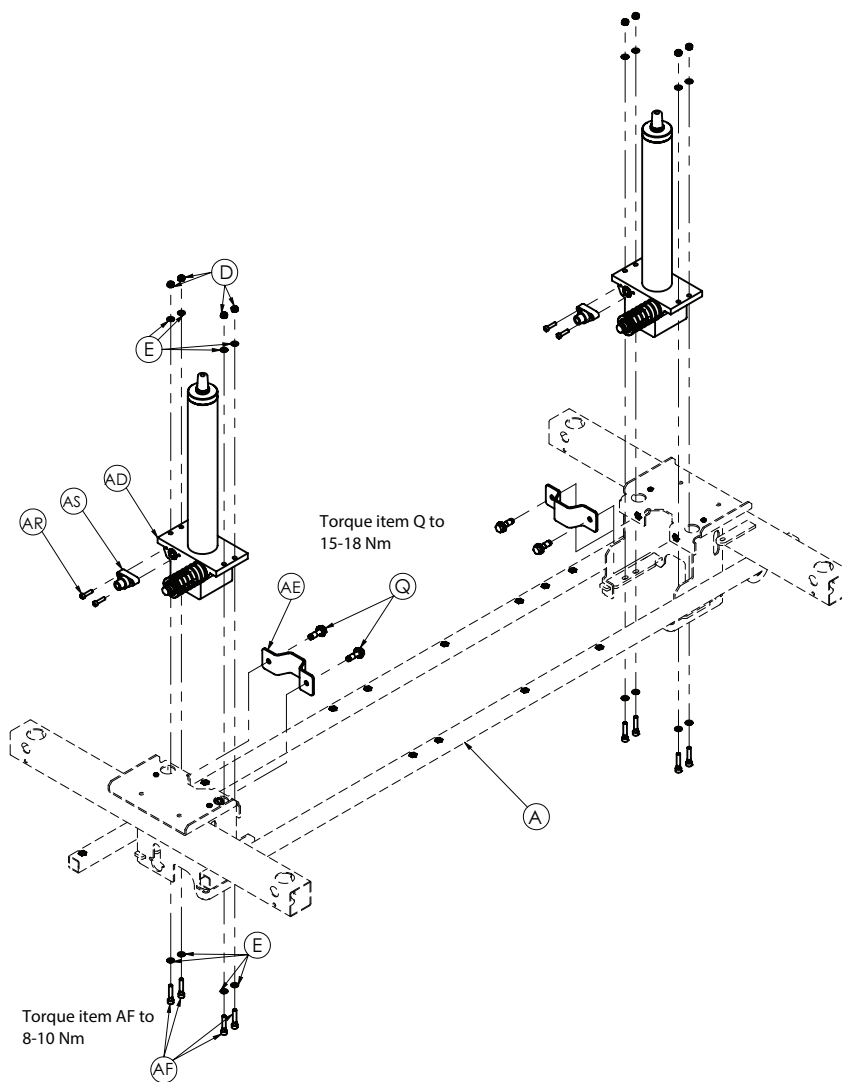
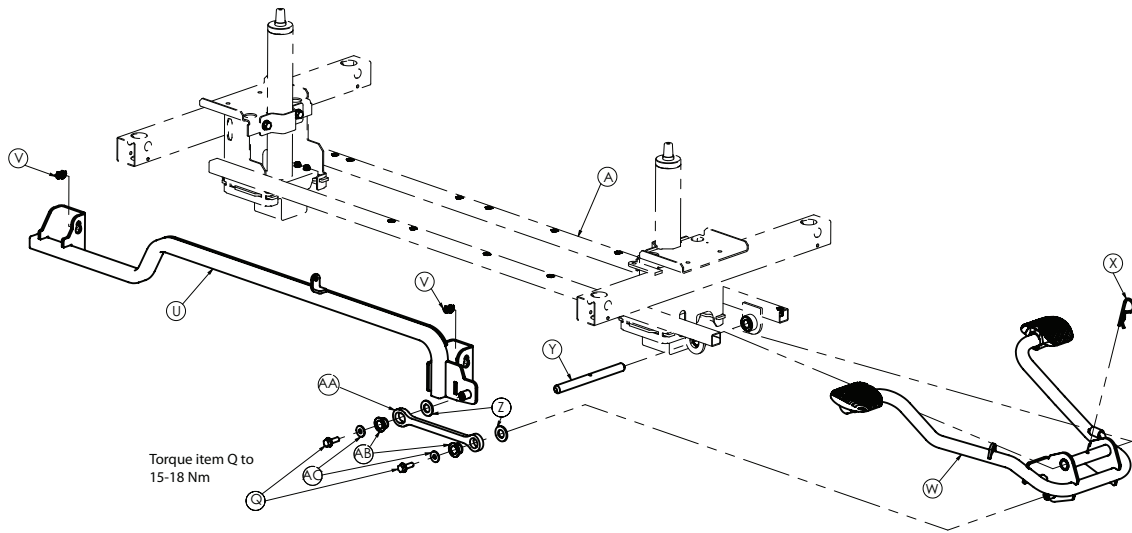
9. Raise the end of the cylinder (D) and remove the spacers (E) and the sleeve (F).
 10. Use a 17 mm combination wrench to loosen the jam nut from the gas spring trip (G) and unthread the cylinder (D) from the gas spring trip (G).
 11. Discard the Fowler backrest cylinder.
 12. Thread the supplied cylinder (D) into the gas spring trip (G) until the cylinder starts to release (extend). Turn the cylinder back one full turn (360 degrees).
- Note** - If the gas cylinder threads are not aligned with the gas spring trip threads, damage may occur to the gas cylinder or gas spring trip. Do not force threading together.
13. Use a 17 mm combination wrench to torque the jam nut to 8-10 Nm against the gas spring trip (G)
- Note** - Make sure that the gas cylinder shaft does not turn when you tighten the nut. If the cylinder turns, readjust the Fowler backrest gas cylinder as instructed in step 10.
14. Reverse steps 1-9 to reinstall.
 15. Verify proper operation before you return the product to service.

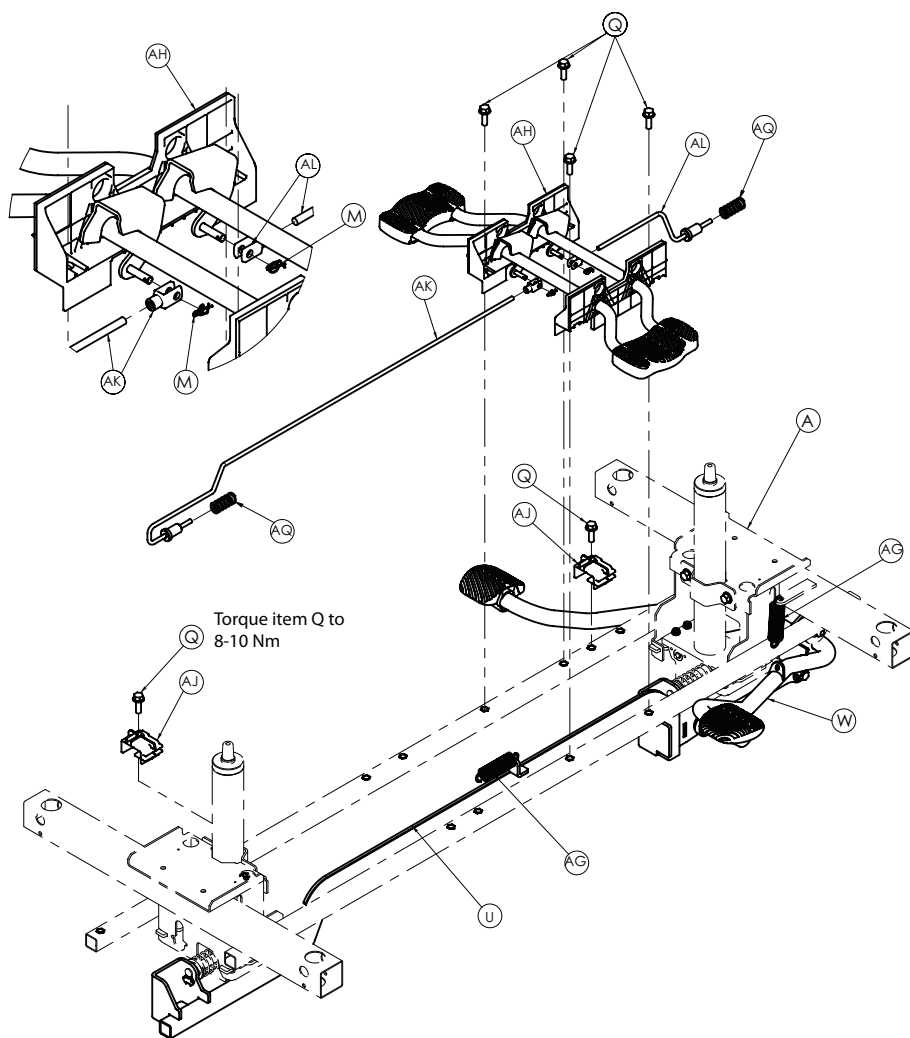
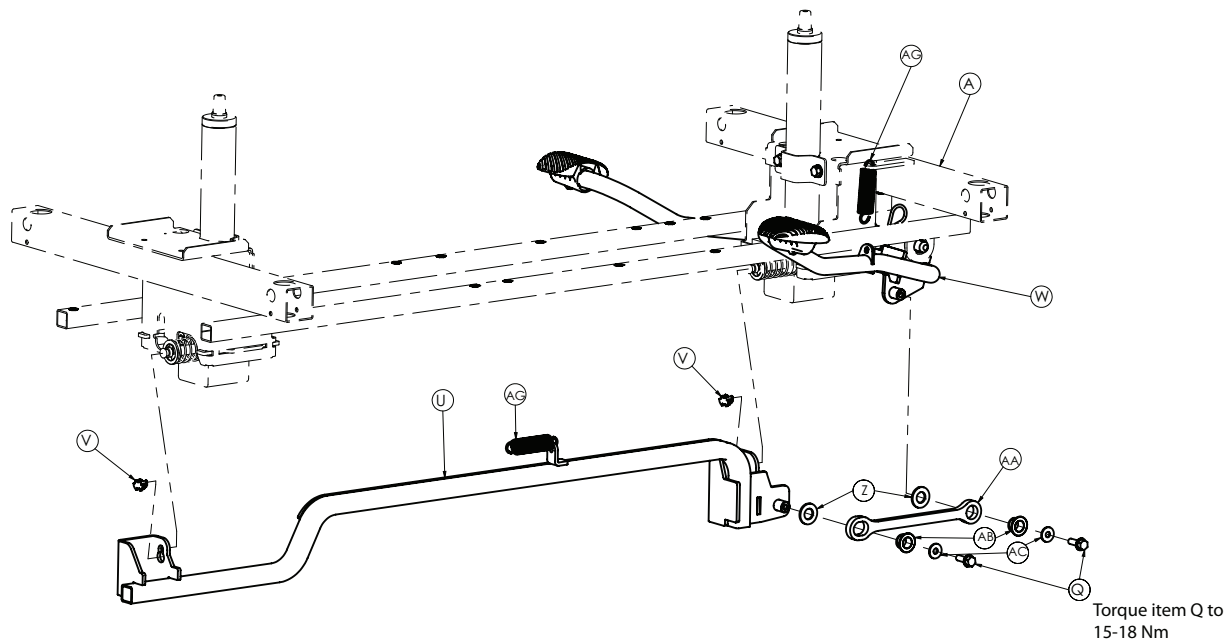
Base assembly

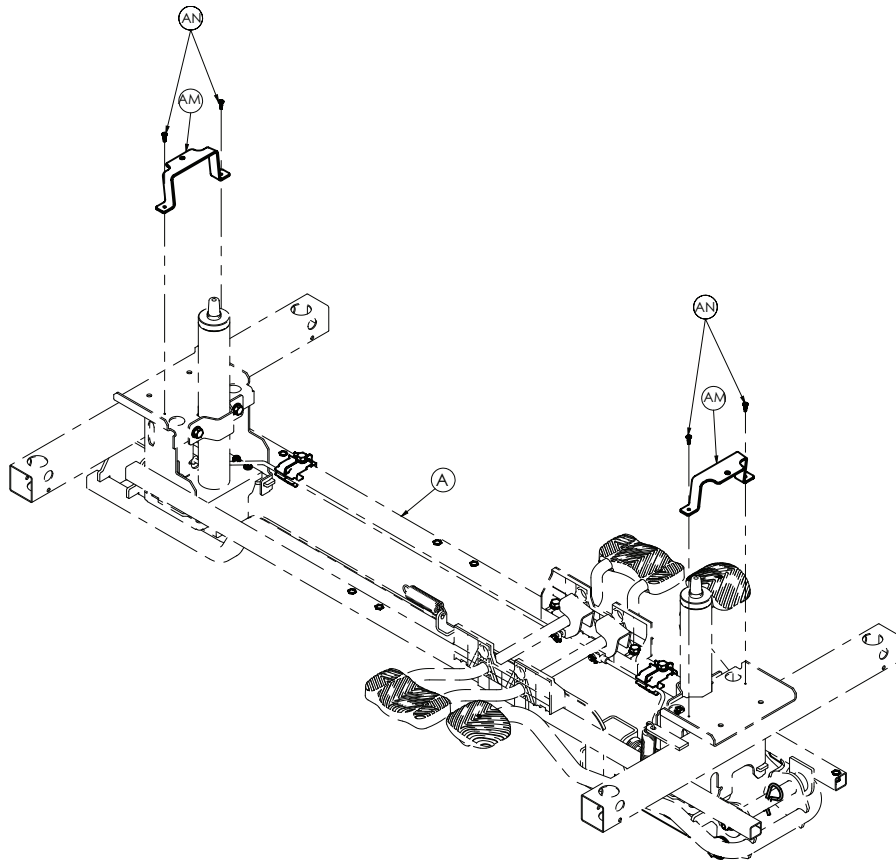
YM-600-000 (Reference only)







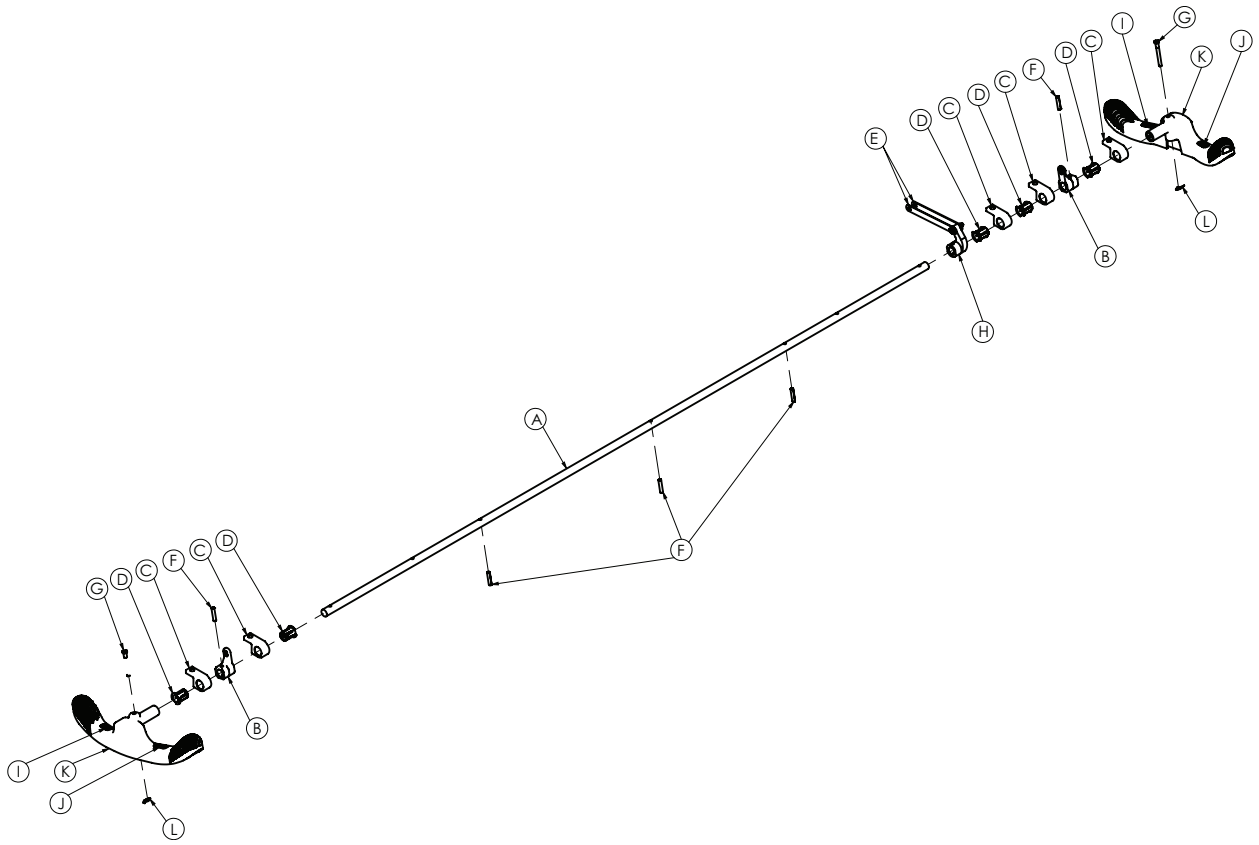




Item	Number	Name	Quantity
A	YM-660-047	Base weldment	1
B	YM-660-160	Caster link weldment	2
C	YM-660-116	Caster lock link part weldment	4
D	HM-08-05	M6 fibered nut	12
E	HM-07-22	M6 steel washer (small)	20
F	HM-12-905	Flanged bronze bushing	4
G	HM-06-001	M6 x 25 mushroom head square neck bolt	4
H	HM-01-69	2046XSXX200R36-32S35 D RAL9003 4XM6 signalwhite antistatic	1
I	HM-01-68	2046UAX200R36-32S35 D RAL9003 4XM6 signalwhite	3
J	YM-660-127	Caster fixing part	4
K	YM-660-046	Caster fixing part	8
L	HM-08-06	M8 fibered nut	4
M	HM-11-33	Ø6 rue clip	4
N	HM-12-027	Ø6 x 26 clevis pin	2
O	HM-12-023	Cam bearing	1
P	HM-05-015	M8 x 30 mm hexagonal head screw	1
Q	HM-05-057	M8 x 25 hexagon head flange adhesive applied bolt	12
R	YM-660-195	Brake rod crank cap	2
S	YM-660-123	Fifth wheel assembly (<i>Fifth wheel assembly - YM-660-123 (page 42)</i>)	1
T	HM-08-06	M8 self-lock hex nut	1

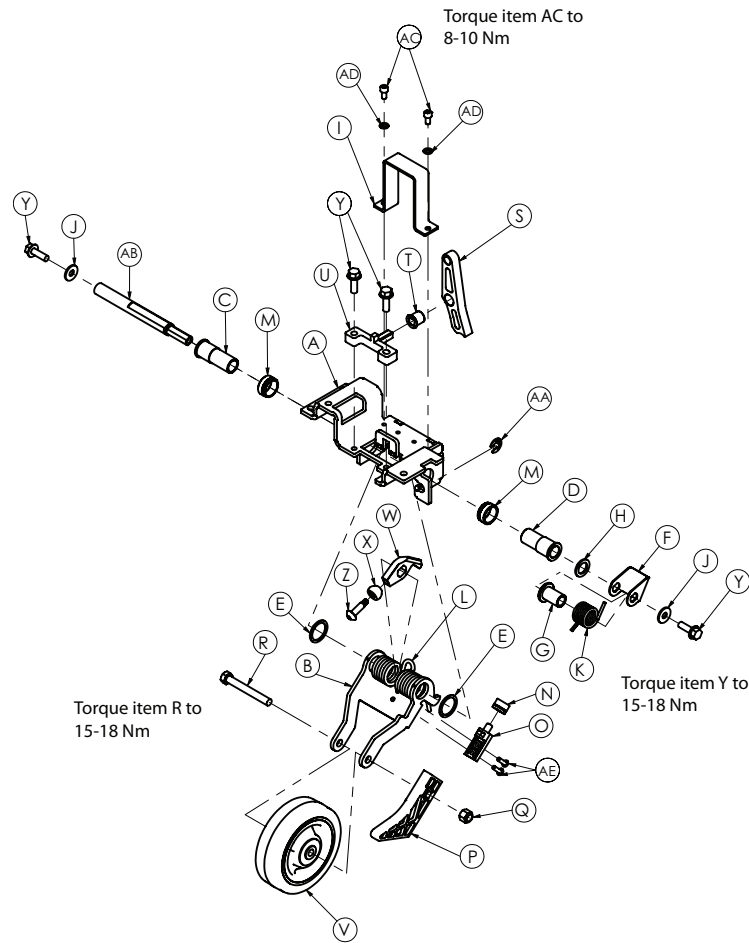
Item	Number	Name	Quantity
U	YM-660-094	Pump connecting tube weldment	1
V	YM-660-191	Pump ram plug	2
W	YM-660-037	Pump pedal assembly (<i>Pump pedal assembly - YM-660-037 (page 45)</i>)	1
X	HM-16-118	Cotter pin	1
Y	HM-12-025	Pivot pin	1
Z	YM-660-105	Ø16,3 x Ø31 x 2,5 mm washer	2
AA	YM-660-083	Lifting pedal link arm	1
AB	HM-12-026	Pump pedal bushing	4
AC	YM-660-082	Ø8 laser washer	2
AD	HM-18-06	Jack assembly	2
AE	YM-660-092	Reservoir clamp	2
AF	HM-05-114	M6 x 30 mm socket head cap bolt	8
AG	HM-16-121	Return spring	2
AH	YM-660-315	Lowering pedal assembly (<i>Lowering pedal assembly - YM-660-315 (page 44)</i>)	1
AJ	YM-660-040	Release rod bracket	2
AK	YM-660-201	Low mech. footside wire assembly (release rod)	1
AL	YM-660-203	Low mech. backrest side wire assembly (release rod)	1
AM	YM-660-204	Hood support	2
AN	HM-06-02	Bolt curved head screwdriver star channel (Ø3.9 x 12)	4
AO	YM-660-320	Brake rod assembly (<i>Brake rod assembly - YM-660-320 (page 41)</i>)	1
AP	HM-07-06	M8 large washer	5
AQ	HM-16-122	Ø20 x 46 x 2 mm spring	2
AR	HM-05-043	M5 x 20 mm hex socket cap screw	4
AS	YM-660-086	Release rod bearing	2

Brake rod assembly - YM-660-320



Item	Number	Name	Quantity
A	YM-660-322	Extension RH/rod brake tube	1
B	HM-12-031	Brake activation crank	2
C	HM-12-032	Brake rod support	5
D	YM-660-098	Brake rod nyliner	5
E	YM-660-064	Fifth wheel cam drive link	2
F	HM-10-17	6 x 30 slotted spring pin	5
G	HM-12-097	Ø6 drilled flange head pin	2
H	HM-12-017	Brake rod drive link	1
I	HM-20-425	Label, brake	2
J	HM-20-425	Label, steer	2
K	HM-02-246	Butterfly "V" pedal	2
L	HM-11-33	Ø6 rue clip	2

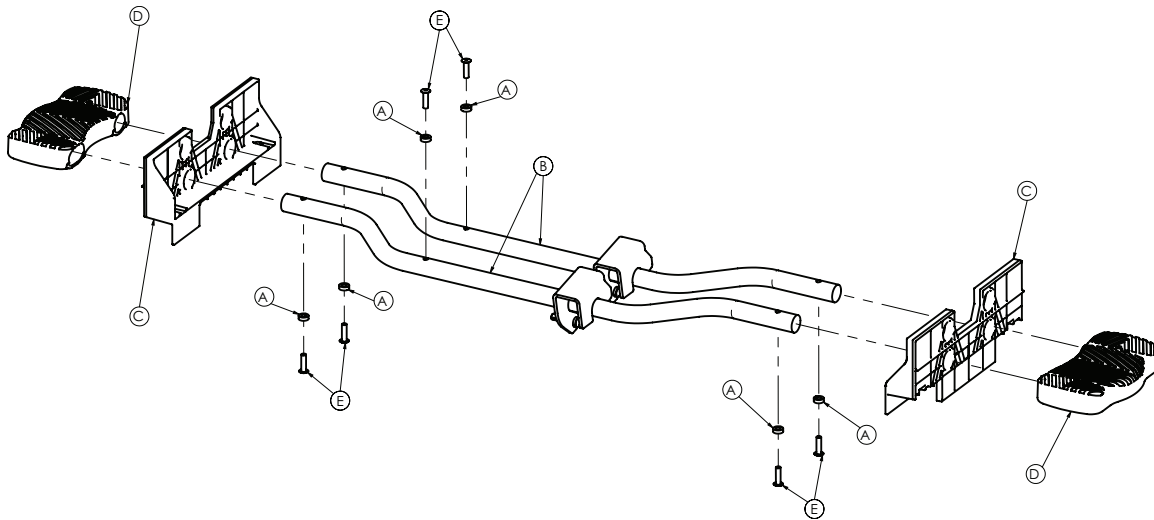
Fifth wheel assembly - YM-660-123



Item	Number	Name	Quantity
A	YM-660-325	Fifth wheel frame weldment	1
B	YM-660-342	Fifth wheel holder part bracket	1
C	YM-660-068	Drive shaft bearing (long)	1
D	YM-660-165	Drive shaft bearing (short)	1
E	YM-660-072	Ø25,4 x Ø31,75 x 1,5 mm	2
F	YM-660-343	Return spring hook	1
G	YM-660-074	Spring spacer	1
H	YM-660-176	Ø16,3 x Ø25 x 2 washer	1
I	YM-660-183	Fifth wheel support bracket	1
J	HM-07-06	M8 large washer	2
K	HM-16-119	Torsion spring	1
L	HM-16-120	Torsion spring	1
M	HM-12-014	Bearing race	2
N	HM-02-242	Dampener	1
O	HM-02-241	Bumper mounting pin	1
P	HM-02-243	Fifth wheel ramp	1
Q	HM-08-14	Nylon hex nut, 3/8" - 24	1
R	HM-05-056	3/8" - 24 x 3" hex head cap screw	1
S	HM-12-028	Fifth wheel cam	1

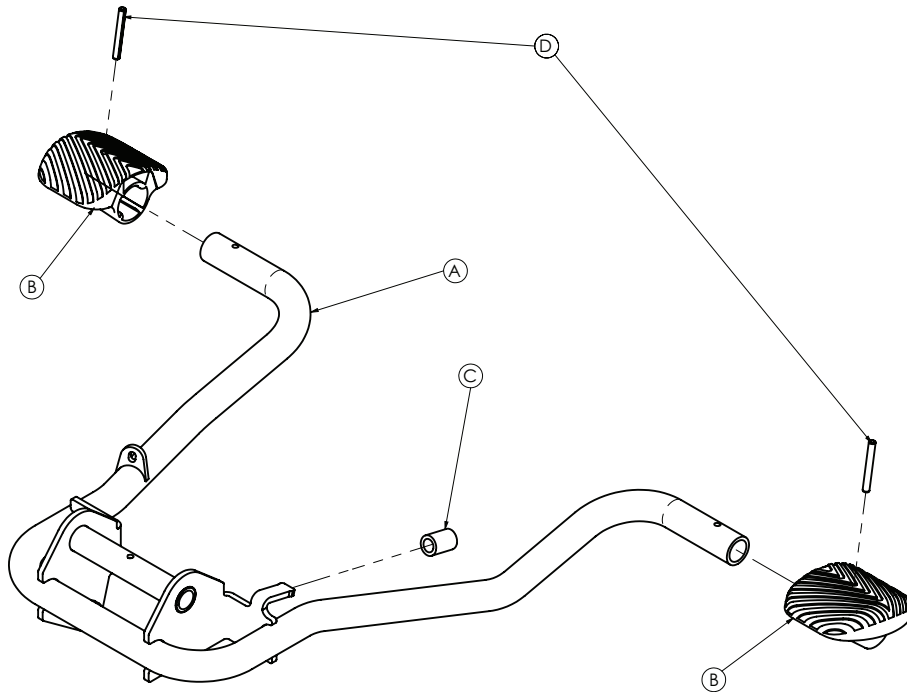
Item	Number	Name	Quantity
T	HM-12-013	Cam bearing	1
U	HM-12-030	Cam pivot block	1
V	HM-01-67	Wheel	1
W	HM-12-029	Drive pin	1
X	HM-12-016	Roller	1
Y	HM-05-057	M8 x 25 hexagon head flange adhesive applied bolt	4
Z	HM-05-055	Roller stem	1
AA	HM-11-16	10 mm E clip DIN 6799	1
AB	HM-12-015	Drive shaft	1
AC	HM-05-022	M6 x 12 mm socket head cap screw DIN 2912	2
AD	HM-07-22	M6 steel washer (small)	2
AE	HM-09-27	Ø5 x 18 dome head rivet	2

Lowering pedal assembly - YM-660-315



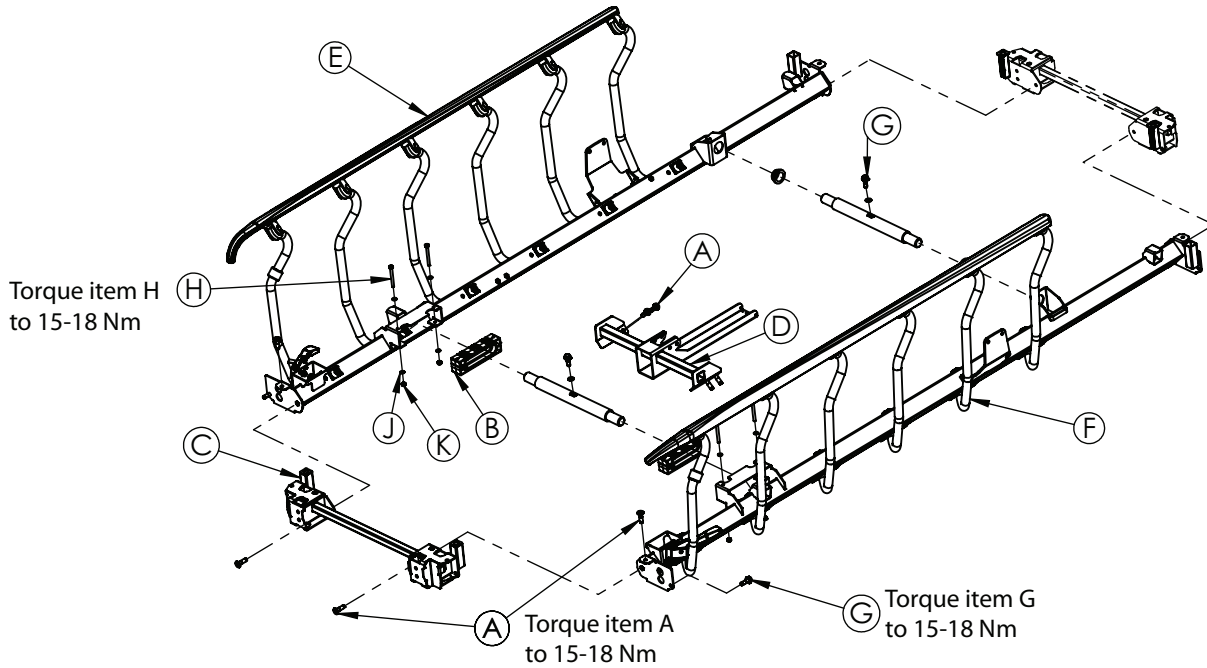
Item	Number	Name	Quantity
A	HM-12-019	Ø5,15 x Ø10 x 3,5 washer	6
B	YM-660-316	Release pedal weldment, black	2
C	HM-02-244	Release pedal support	2
D	HM-02-245	Short uni-pedal, cool grey	2
E	HM-09-27	Ø4,8 pop rivet	6

Pump pedal assembly - YM-660-037



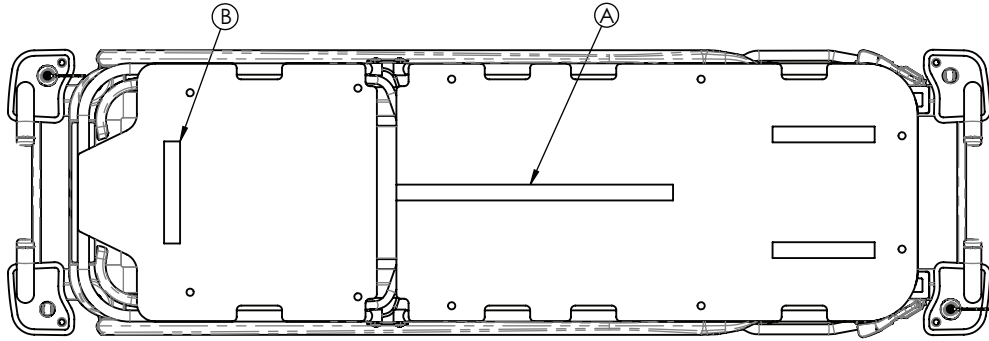
Item	Number	Name	Quantity
A	YM-660-130	Pump pedal weldment	1
B	HM-02-240	Plastic pump pedal, cool grey	2
C	YM-660-172	CLR vinyl tube	1
D	HM-12-009	Groove pin	2

Litter frame assembly, ST1-X option



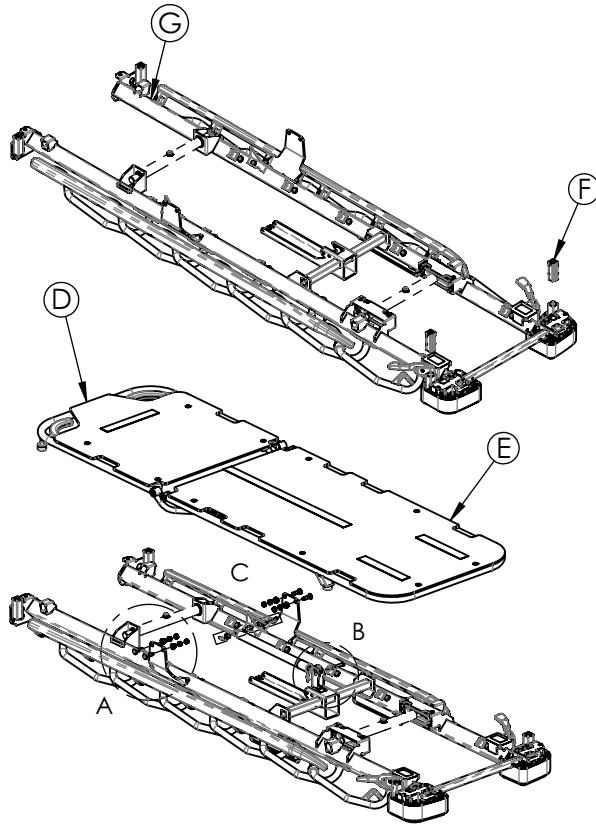
Item	Number	Name	Quantity
A	HM-05-002	M8 x 30 torx head machine screw	12
B	YM-500-087	Trend block - slide	2
C	YM-500-153-BY	Bumper weldment assembly	2
D	YM-500-127-BY	Frame tie weldment	1
E	YM-500-003	Right siderail assembly, ST1-X option - YM-500-003 (page 54)	1
F	YM-500-002	Left siderail assembly, ST1-X option - YM-500-002 (page 52)	1
G	HM-05-057	M8 x 25 hexagon head flange adhesive applied bolt	4
H	HM-05-011	M6 x 60 mm hex bolt	4
J	HM-07-22	M6 steel washer (small)	8
K	HM-08-05	M6 fibered nut	4

Litter mattress hook

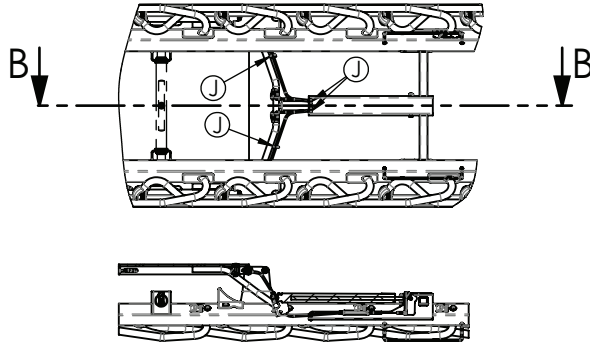
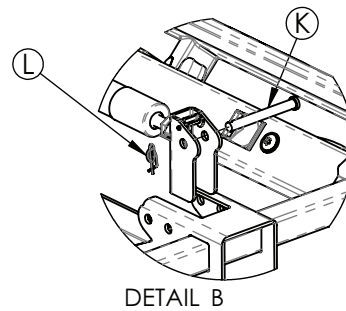
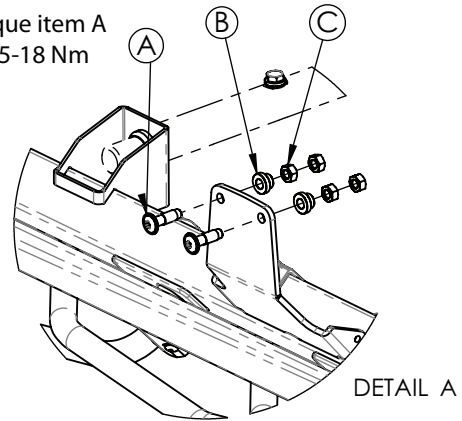


Item	Number	Name	Quantity
A	YM-500-215	Mattress Velcro ® hook, 610 x 5 mm	1
B	YM-500-214	Mattress Velcro ® hook, 225 x 5 mm	3

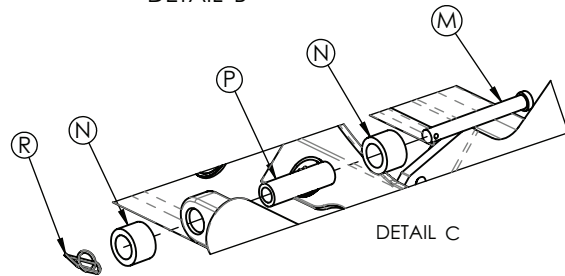
Litter assembly, KAPADO-X option



Torque item A
to 15-18 Nm



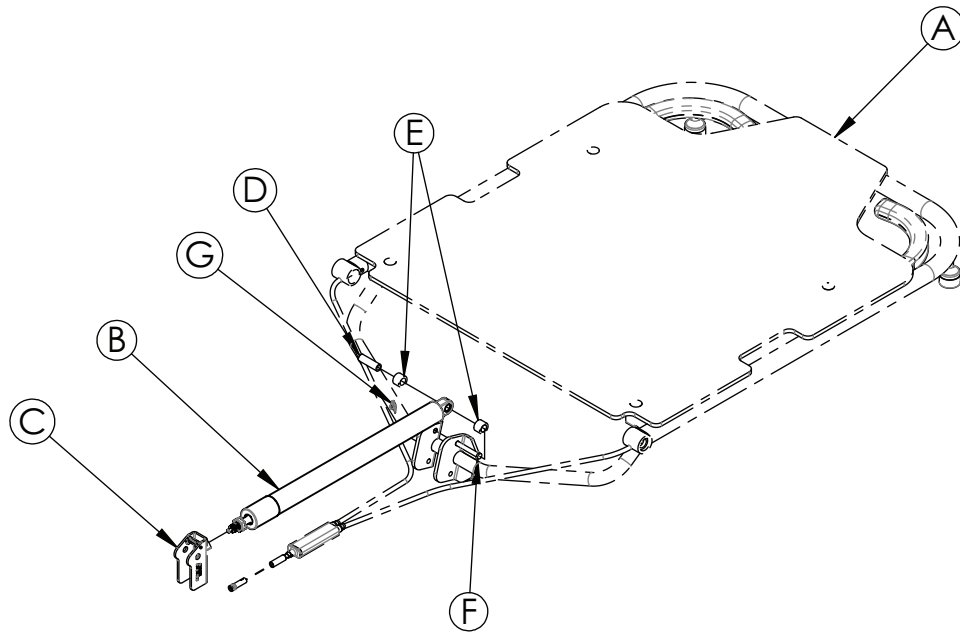
SECTION B-B



Item	Number	Name	Quantity
A	HM-05-002	M8 x 30 torx head machine screw	4
B	HM-12-036	Pivot bushing	4
C	HM-08-09	Hex nut	8
D	YM-500-004	Fowler assembly	1
E	YM-500-005	Foot end assembly	1
F	YM-500-143	Footboard receptacle	4
G	YM-500-002	Left siderail assembly	1
J	HM-20-557	Ø15 cable tie	4
K	HM-12-039	Ø8 x 70 clevis pin	1
L	HM-11-35	Ø8 rue clip	1
M	HM-12-040	Ø6 x 52 clevis pin	1

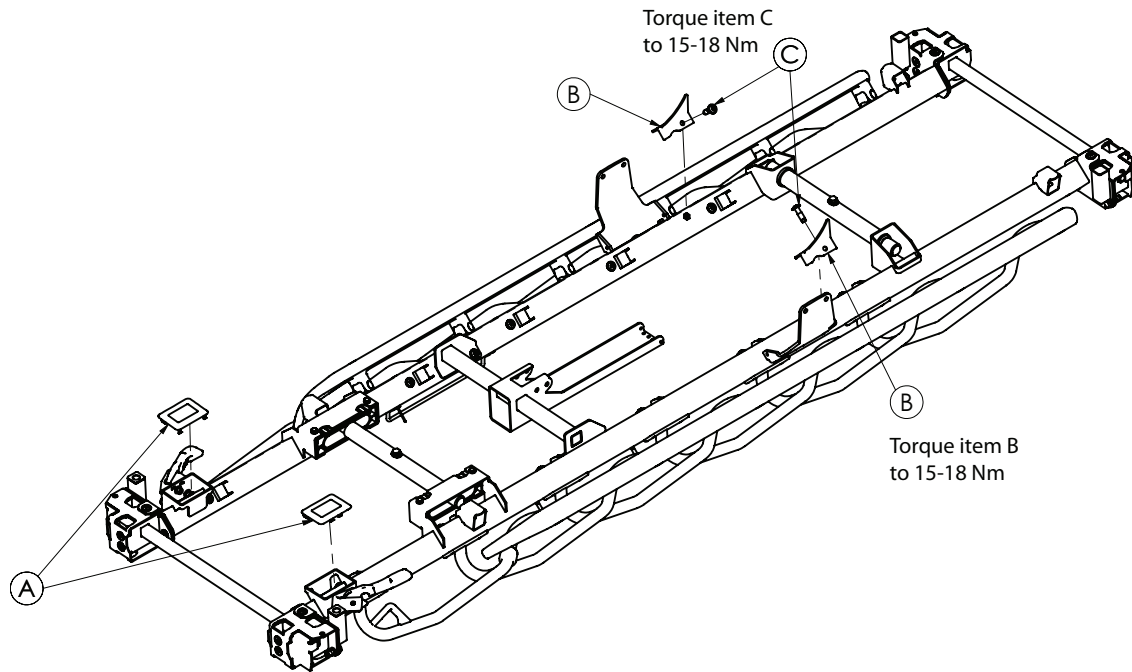
Item	Number	Name	Quantity
N	YM-HM-02-268	10,4 x 16 x 10,7 spacer	2
P	HM-12-041	Sleeve	1
R	HM-11-33	Ø6 rue clip	1
S	YM-500-003	Right siderail assembly	1

Fowler assembly, KAPADO-X option



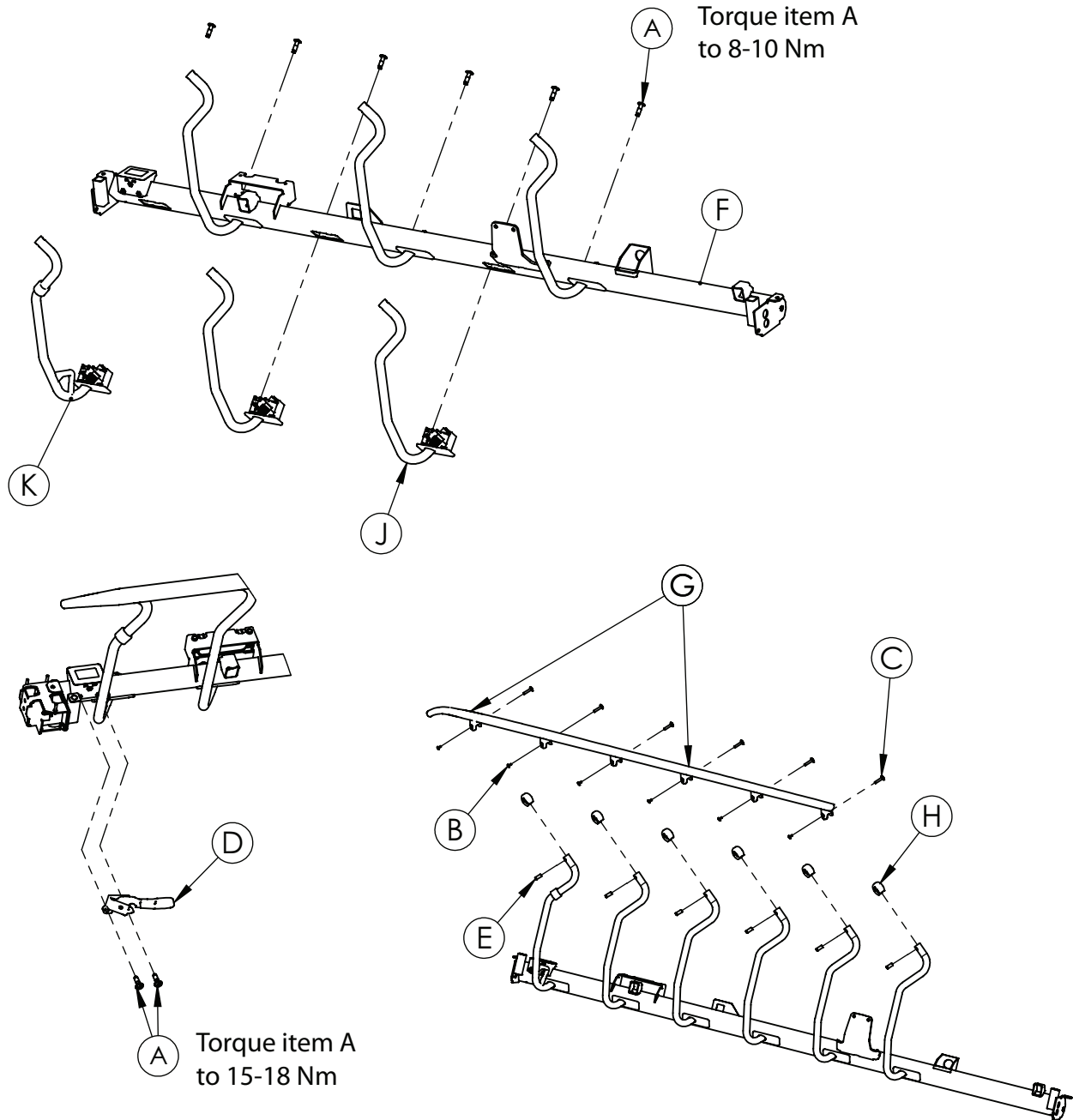
Item	Number	Name	Quantity
A	YM-500-004	Fowler assembly	1
B	HM-18-07	Cylinder - 420 N	1
C	HM-19-106	Gas spring trip	1
D	HM-12-041	Sleeve	1
E	YM-HM-02-268	10,4 x 16 x 10,7 spacer	2
F	HM-12-040	Ø6 x 52 clevis pin	1
G	HM-11-33	Ø6 rue clip	1
H	HM-16-125	Fowler cable assembly	1

Profile cap and Fowler guide part assembly, ST1-X option



Item	Number	Name	Quantity
A	YM-HM-02-033	Profile cap	2
B	YM-500-085	Fowler guide part	2
C	HM-05-002	M8 x 30 torx head machine screw	2

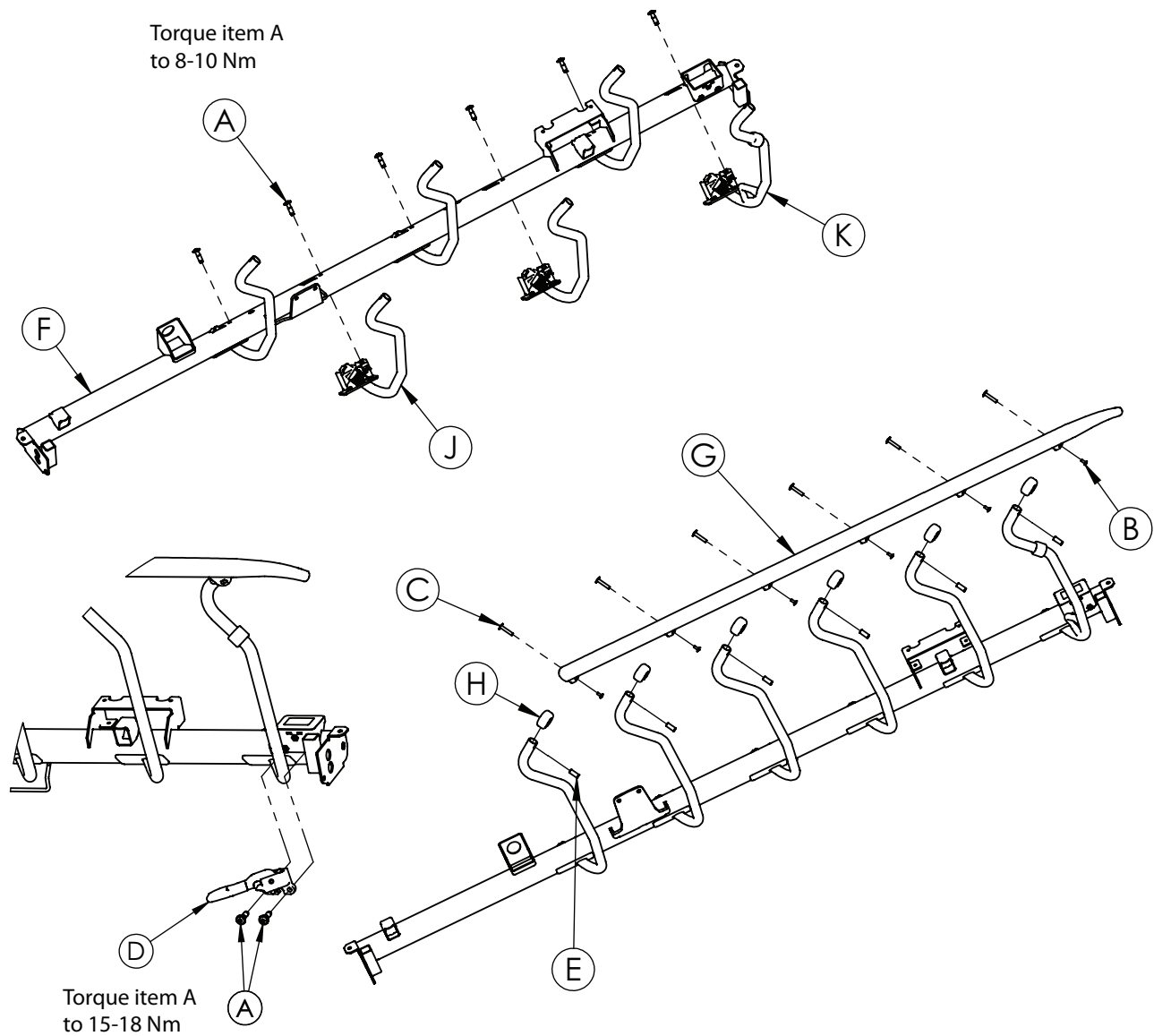
Left siderail assembly, ST1-X option - YM-500-002



Item	Number	Name	Quantity
A	HM-05-002	M8 x 30 torx head machine screw	8
B	HM-09-35	Blind rivet, 5 x 12 aluminum	6
C	HM-09-34	Tubular component	6
D	YM-500-008	Left siderail latch assembly - YM-500-008 (page 55)	1
E	HM-12-033	Spindle bearing	6
F	YM-500-155-BY	Left siderail extension tube	1
G	HM-02-257	Left toprail	1
H	HM-02-253	Spindle plug	6

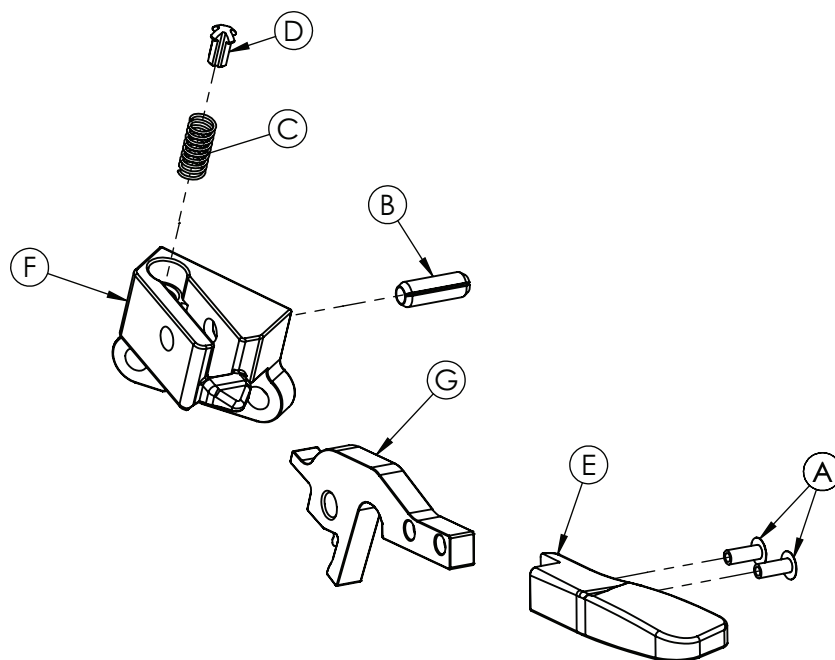
Item	Number	Name	Quantity
J	YM-500-006	<i>Left spindle assembly - YM-500-006 (page 57)</i>	5
K	YM-500-007	<i>Left latch spindle assembly - YM-500- 007 (page 59)</i>	1

Right siderail assembly, ST1-X option - YM-500-003



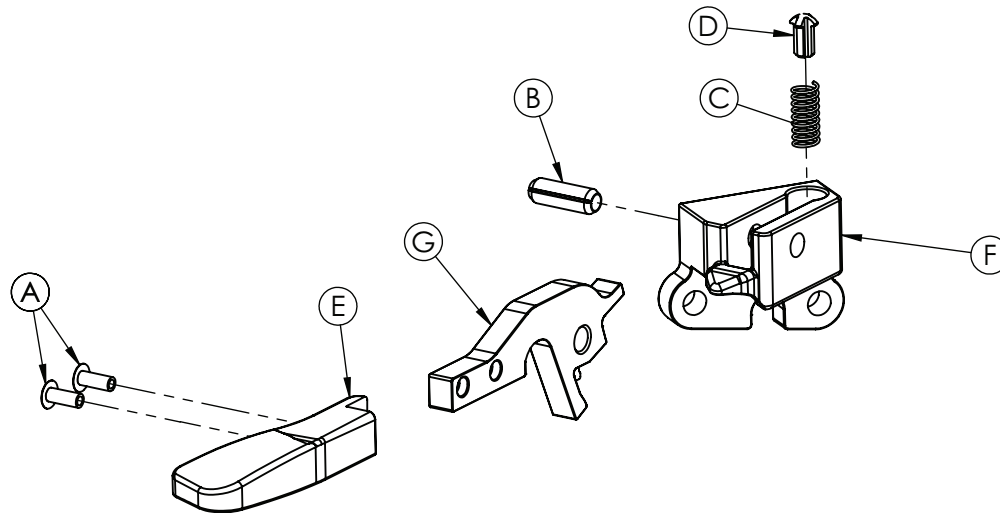
Item	Number	Name	Quantity
A	HM-05-002	M8 x 30 torx head machine screw	8
B	HM-09-35	Blind rivet, 5 x 12 aluminum	6
C	HM-09-34	Tubular component	6
D	YM-500-012	Right siderail latch assembly - YM-500-012 (page 56)	1
E	HM-12-033	Spindle bearing	6
F	YM-500-156-BY	Right siderail extension tube	1
G	HM-02-258	Right toprail	1
H	HM-02-253	Spindle plug	6
J	YM-500-010	Right spindle assembly - YM-500-010 (page 58)	5
K	YM-500-009	Right latch spindle assembly - YM-500-009 (page 60)	1

Left siderail latch assembly - YM-500-008



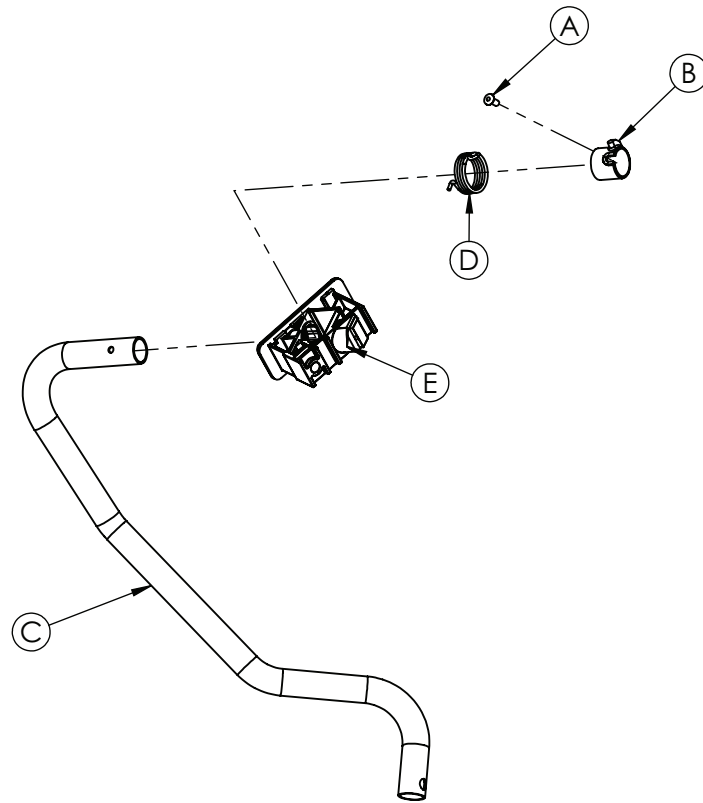
Item	Number	Name	Quantity
A	HM-09-36	Dome head pop rivet	2
B	HM-19-114	Ø8 x 25 mm slotted spring pin	1
C	HM-19-112	Ø9 x 22 x 0,9 compression wire	1
D	HM-19-113	Plunger	1
E	YM-HM-02-232	Left latch handle	1
F	HM-19-109	Left latch mounting block	1
G	HM-19-111	Latch plate	1

Right siderail latch assembly - YM-500-012



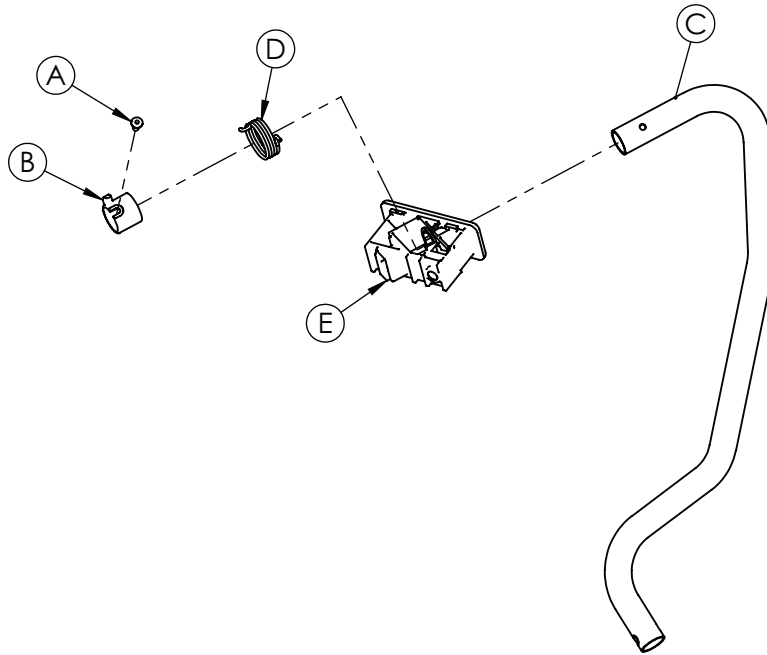
Item	Number	Name	Quantity
A	HM-09-36	Dome head pop rivet	2
B	HM-19-114	Ø8 x 25 mm slotted spring pin	1
C	HM-19-112	Ø9 x 22 x 0,9 compression wire	1
D	HM-19-113	Plunger	1
E	YM-HM-02-233	Right latch handle	1
F	HM-19-110	Right latch mounting block	1
G	HM-19-111	Latch plate	1

Left spindle assembly - YM-500-006



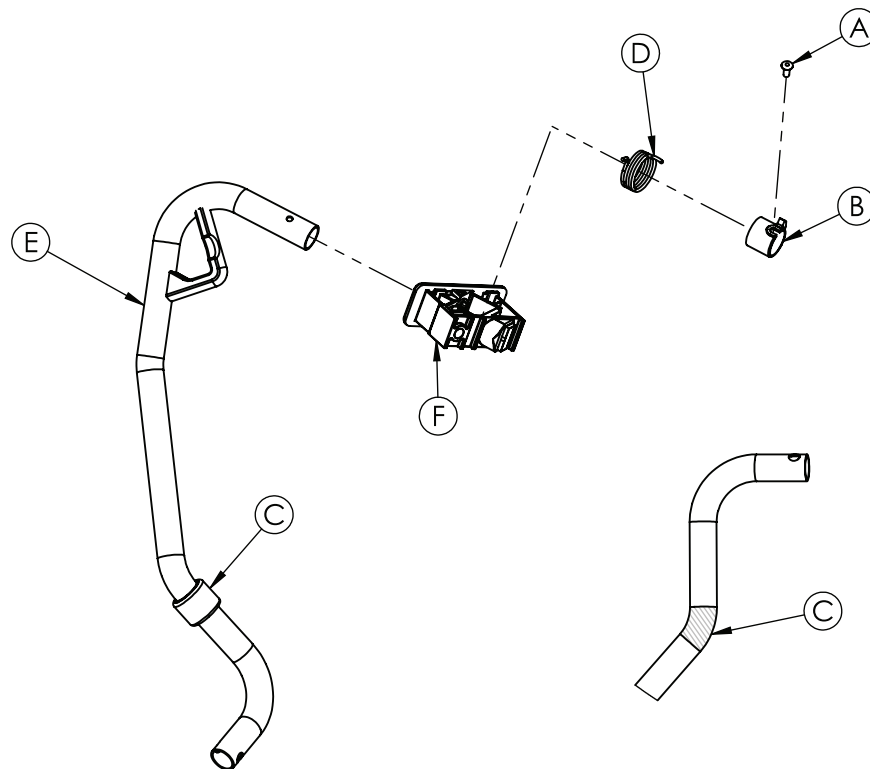
Item	Number	Name	Quantity
A	HM-09-36	Dome head pop rivet	1
B	YM-HM-02-432	Left spindle spacer	1
C	HM-19-102	Left spindle	1
D	HM-16-123	Left siderail spring	1
E	YM-HM-02-431	Spindle pivot block	1

Right spindle assembly - YM-500-010



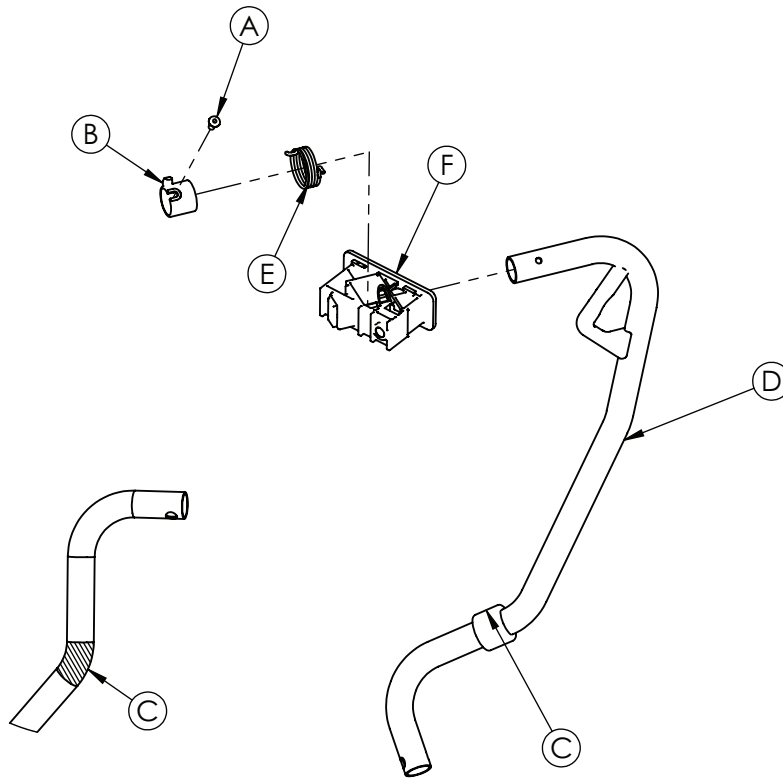
Item	Number	Name	Quantity
A	HM-09-36	Dome head pop rivet	1
B	YM-HM-02-437	Right spindle spacer	1
C	HM-19-103	Right spindle	1
D	HM-16-124	Right siderail spring	1
E	YM-HM-02-431	Spindle pivot block	1

Left latch spindle assembly - YM-500-007



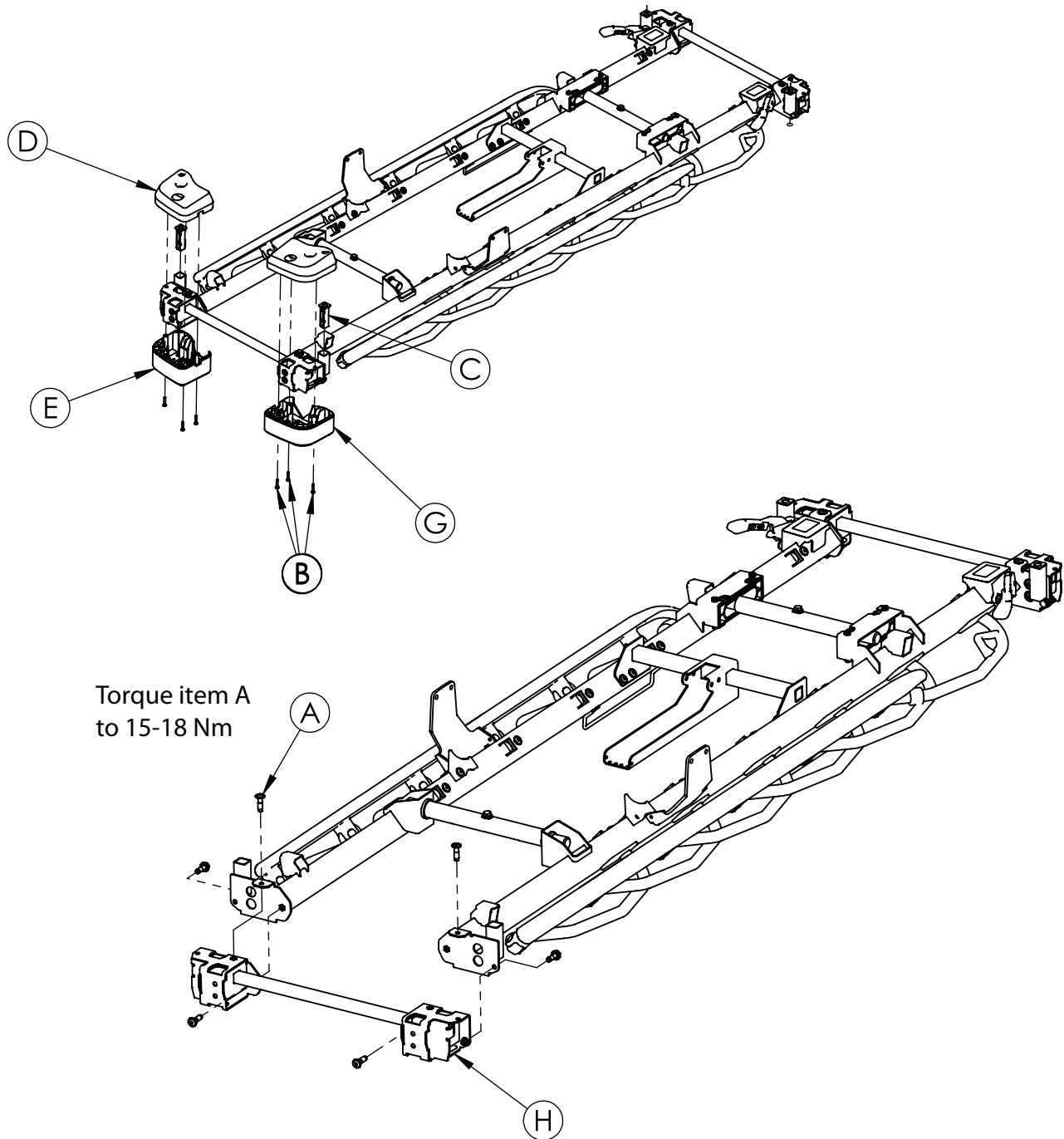
Item	Number	Name	Quantity
A	HM-09-36	Dome head pop rivet	1
B	YM-HM-02-432	Left spindle spacer	1
C	YM-HM-02-433	Rubber stop	1
D	HM-16-123	Left siderail spring	1
E	HM-19-105	Left latch spindle	1
F	YM-500-017	Pivot block/nut assembly	1

Right latch spindle assembly - YM-500-009



Item	Number	Name	Quantity
A	HM-09-36	Dome head pop rivet	1
B	YM-HM-02-437	Right spindle spacer	1
C	YM-HM-02-433	Rubber stop	1
D	HM-19-104	Right latch spindle	1
E	HM-16-124	Right siderail spring	1
F	YM-500-017	Pivot block/nut assembly	1

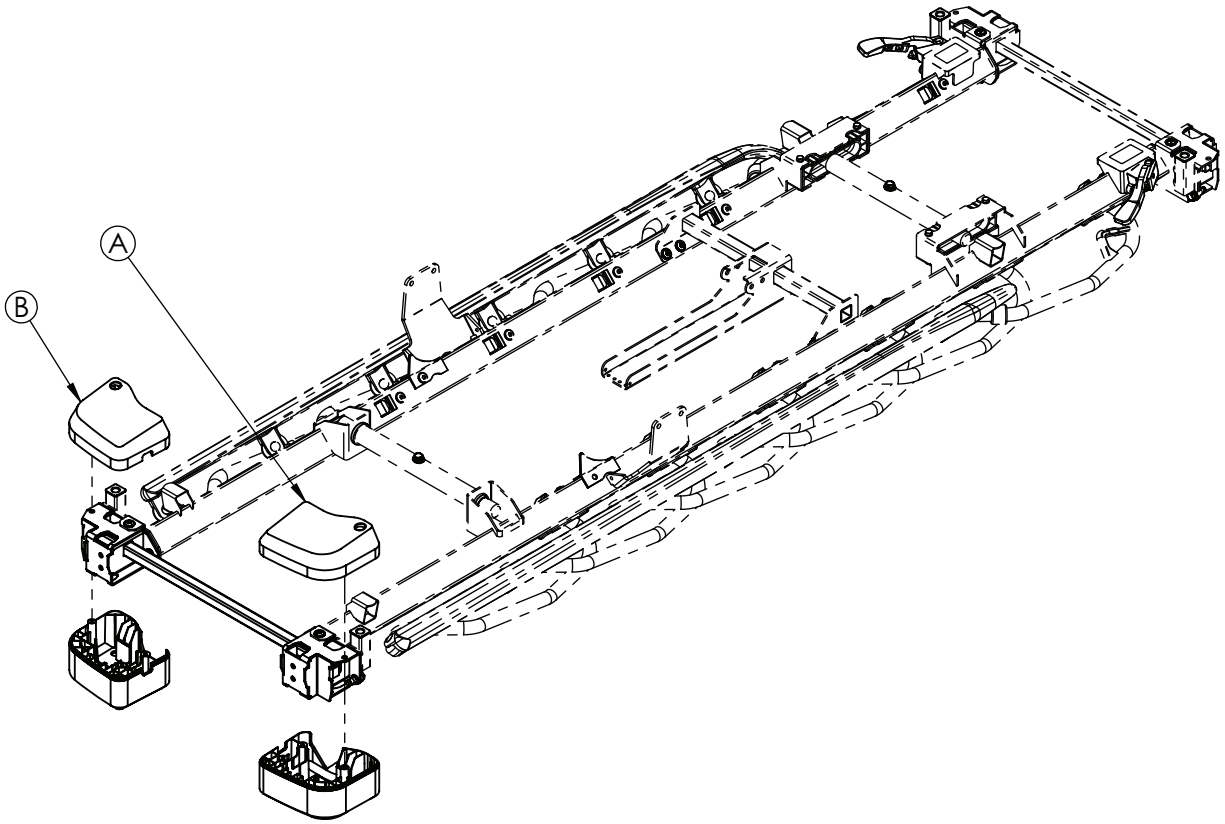
Corner cover assembly



Item	Number	Name	Quantity
A	HM-05-002	M8 x 30 torx head machine screw	4
B	HM-05-060	4.8*25 Torx pan head tapping screw ANSI B18.6.4	6
C	YM-500-143	Footboard receptacle	2
D	YM-501-023	Upper bumper cover A with IV pole, push handle	1
E	YM-501-025	Bottom bumper cover A	1
F	YM-501-022	Upper bumper cover B with IV pole, push handle	1
G	YM-501-024	Bottom bumper cover B	1

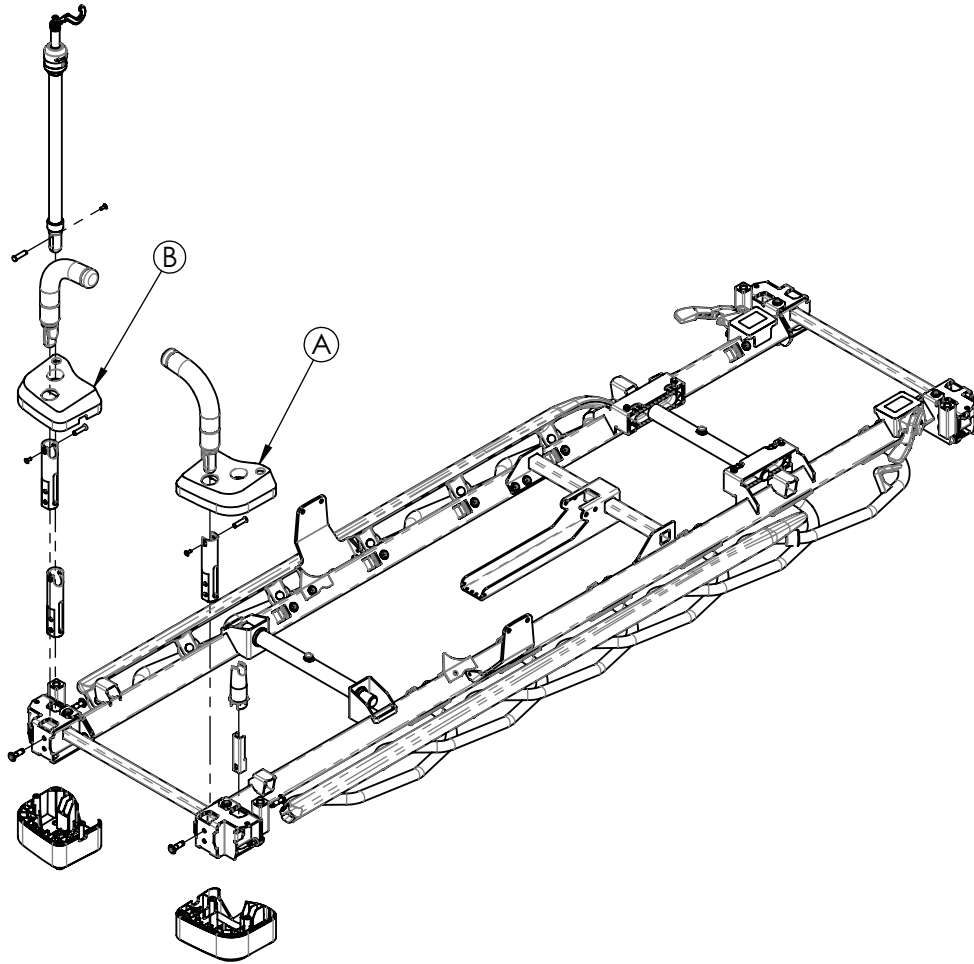
Item	Number	Name	Quantity
H	YM-500-153-BY	Bumper weldment assembly	1
J	HM-05-057	M8 x 25 hexagon head flange adhesive applied bolt	2

Covers assembly, no options, head end



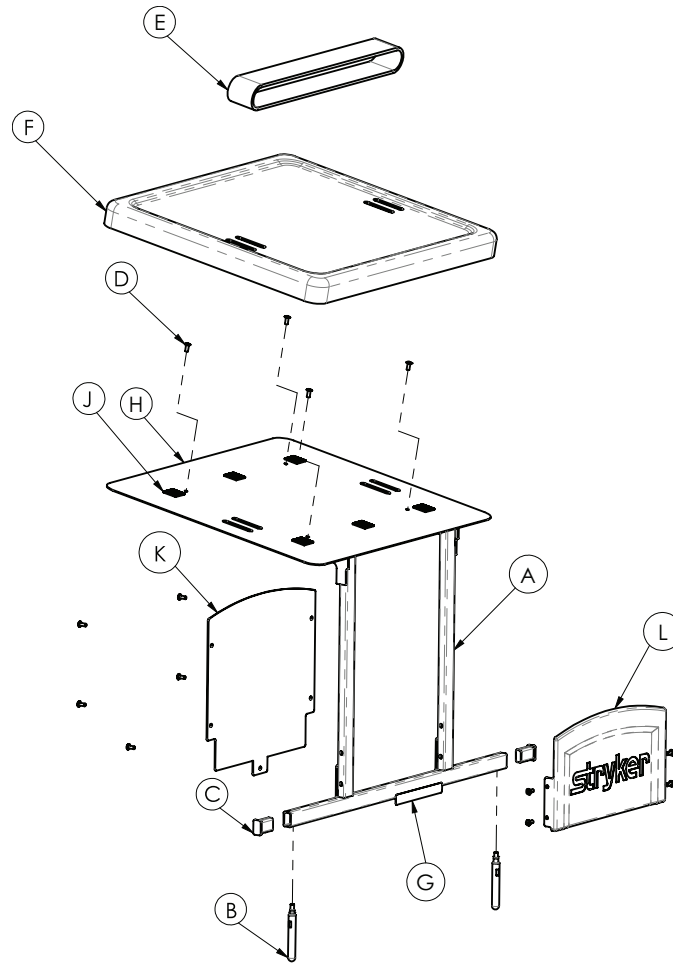
Item	Number	Name	Quantity
A	YM-501-039	Bumper A upper cover	1
B	YM-501-040	Bumper B upper cover	1

Covers assembly with IV pole and pop-up push handles, head end



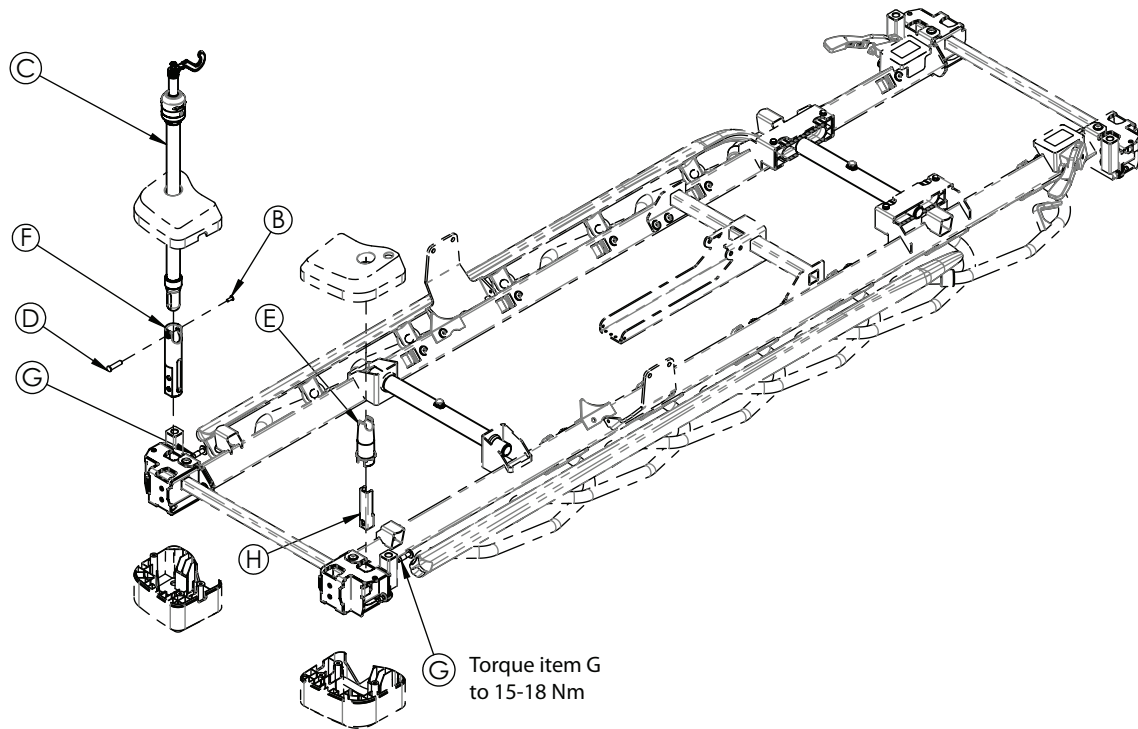
Item	Number	Name	Quantity
A	YM-501-023	Bumper A upper cover, IV pole, push handle	1
B	YM-501-022	Bumper B upper cover, IV pole, push handle	1

Defibrillator tray assembly



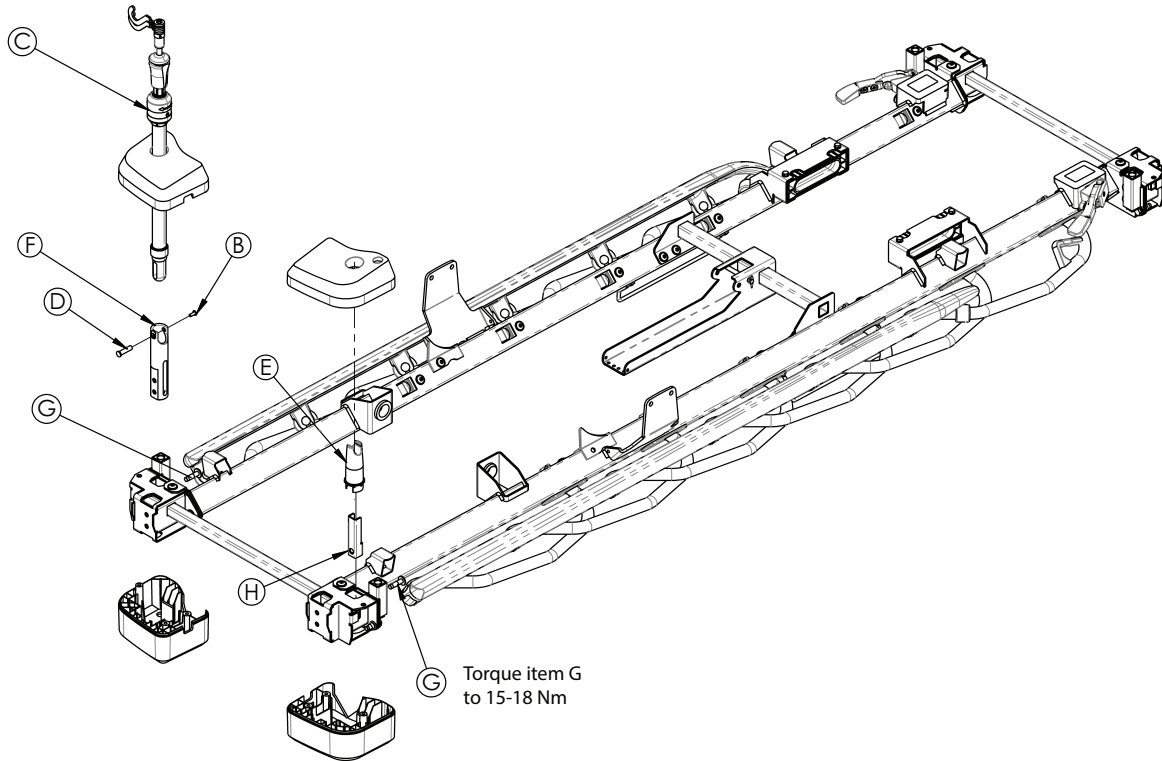
Item	Number	Name	Quantity
A	YM-500-182-BY	Weldment assembly	1
B	HM-12-044	Connection socket	2
C	HM-12-1066	15 x 25 x 1,5 mm inner support tube	2
D	HM-09-36	Dome head pop rivet	13
E	MM058	Strap	1
F	HM-02-270	Upper hood	1
G	HM-20-082	Label	1
H	YM-500-174-BY	Hood tray	1
J	YM-660-249	Base hood dual lock 25 mm	12
K	YM-DSPLK-0001	Chartholder sheet	1
L	HM-DOSYALIK-03-01	Chartholder hood	1

Two-stage IV pole assembly



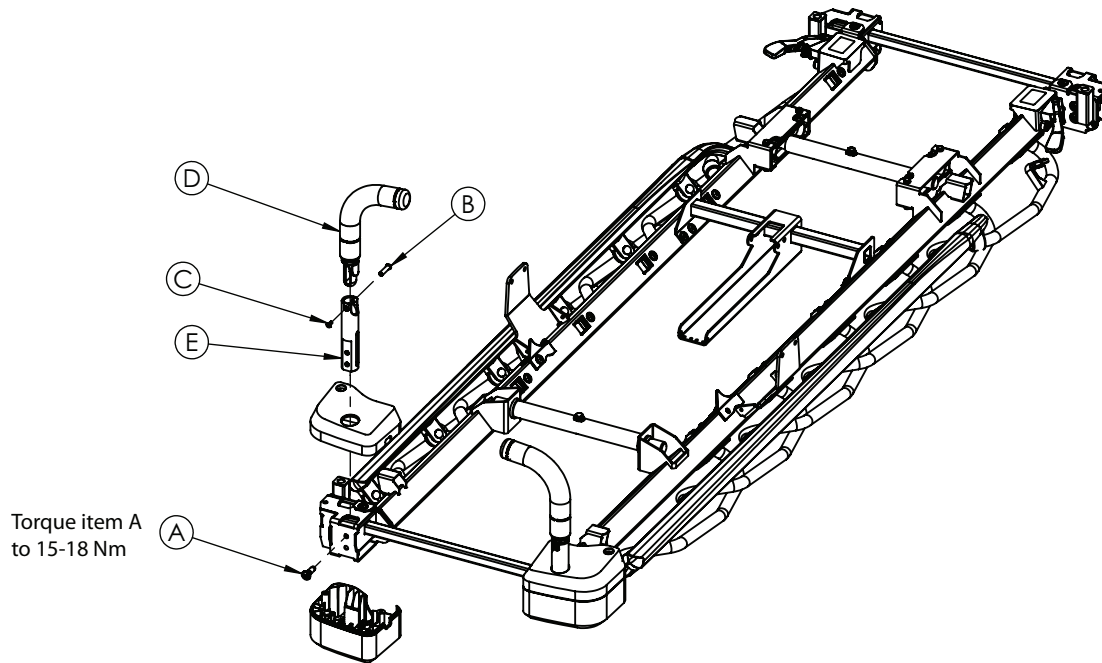
Item	Number	Name	Quantity
B	HM-09-36	Dome head pop rivet	1
C	HM-19-108	Two stage IV pole assembly	1
D	HM-12-043	Handle pivot pin	1
E	HM-02-267	Magnetic IV pole support assembly	1
F	HM-12-042	IV pole socket	1
G	HM-05-002	M8 x 30 torx head machine screw	2
H	YM-500-145-BY	IV pole lock profile	1

Three-stage IV pole assembly



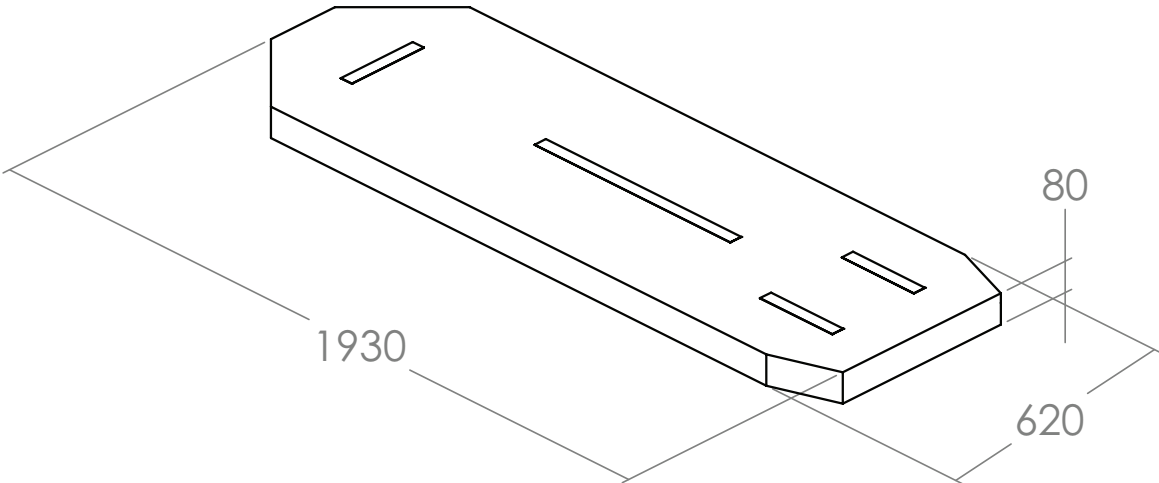
Item	Number	Name	Quantity
B	HM-09-36	Dome head pop rivet	1
C	HM-19-115	Three stage IV pole assembly	1
D	HM-12-043	Handle pivot pin	1
E	HM-02-267	Magnetic IV pole support assembly	1
F	HM-12-042	IV pole socket	1
G	HM-05-002	M8 x 30 torx head machine screw	2
H	YM-500-145-BY	IV pole lock profile	1

Push handle assembly, head end

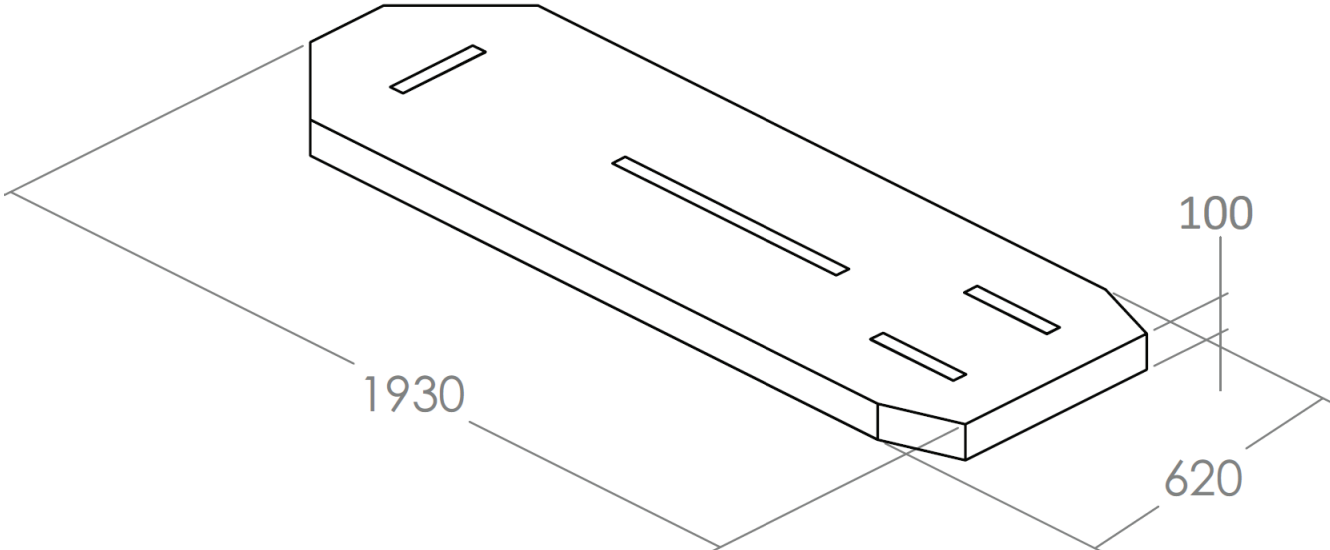


Item	Number	Name	Quantity
A	HM-05-002	M8 x 30 torx head machine screw	1
B	HM-12-043	Handle pivot pin	1
C	HM-09-36	Dome head pop rivet	1
D	HM-12-042	IV pole socket	1
E	HM-19-107	Push handle	1

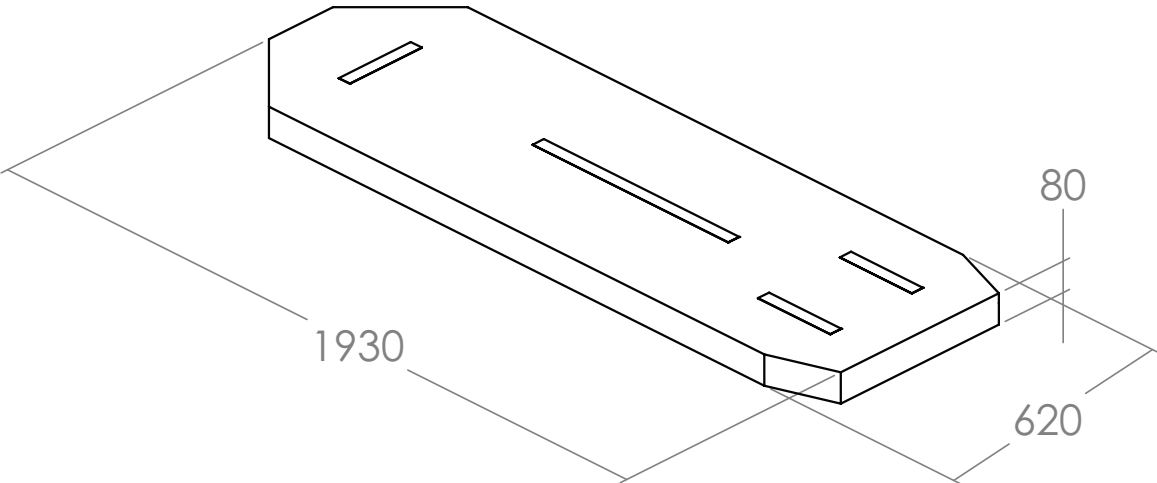
ST1 basic mattress 8 cm - 6300-0-100



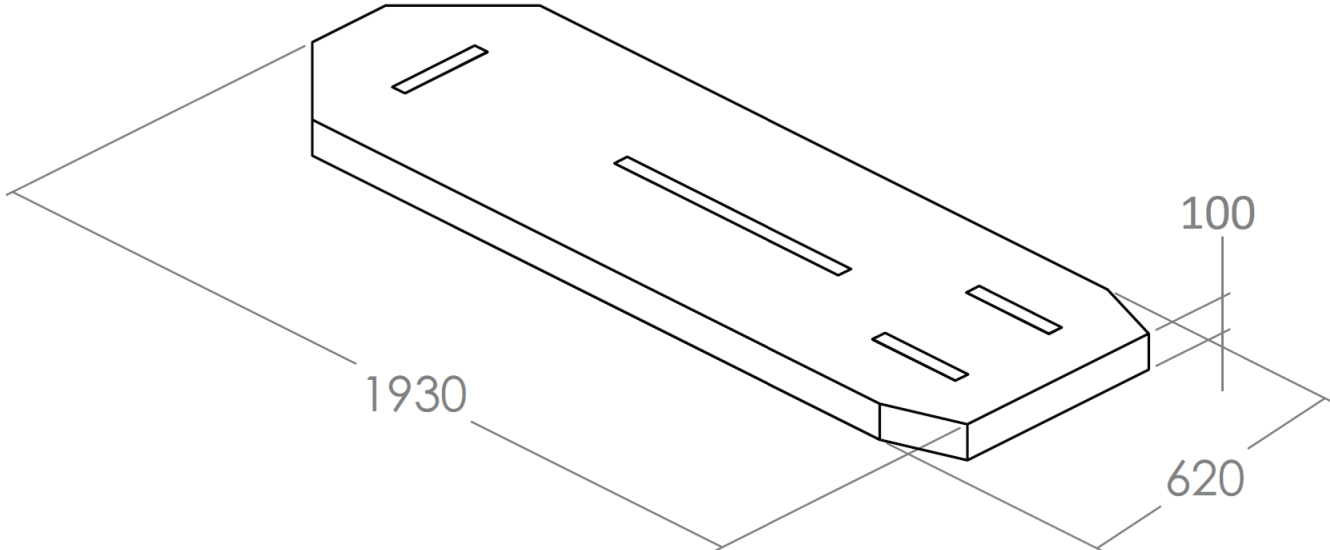
ST1 basic mattress 10 cm - 6300-0-102



ST1 mattress with flame barrier 8 cm - 6300-0-103



ST1 mattress with flame barrier 10 cm - 6300-0-104



stryker



Stryker Medical
3800 E. Centre Avenue
Portage, MI 49002
USA